

Project ID 1303 FM 1486 Project Year 2030

Straight Growth from 2022:

			Growth Rate	2.51%	1.0251
AADT	2022	4835	Known Count		
	2023	4956			
	2024	5081			
	2025	5208			
	2026	5339			
	2027	5473			
	2028	5610			
	2029	5751			
	2030	5896			
	2031	6044			

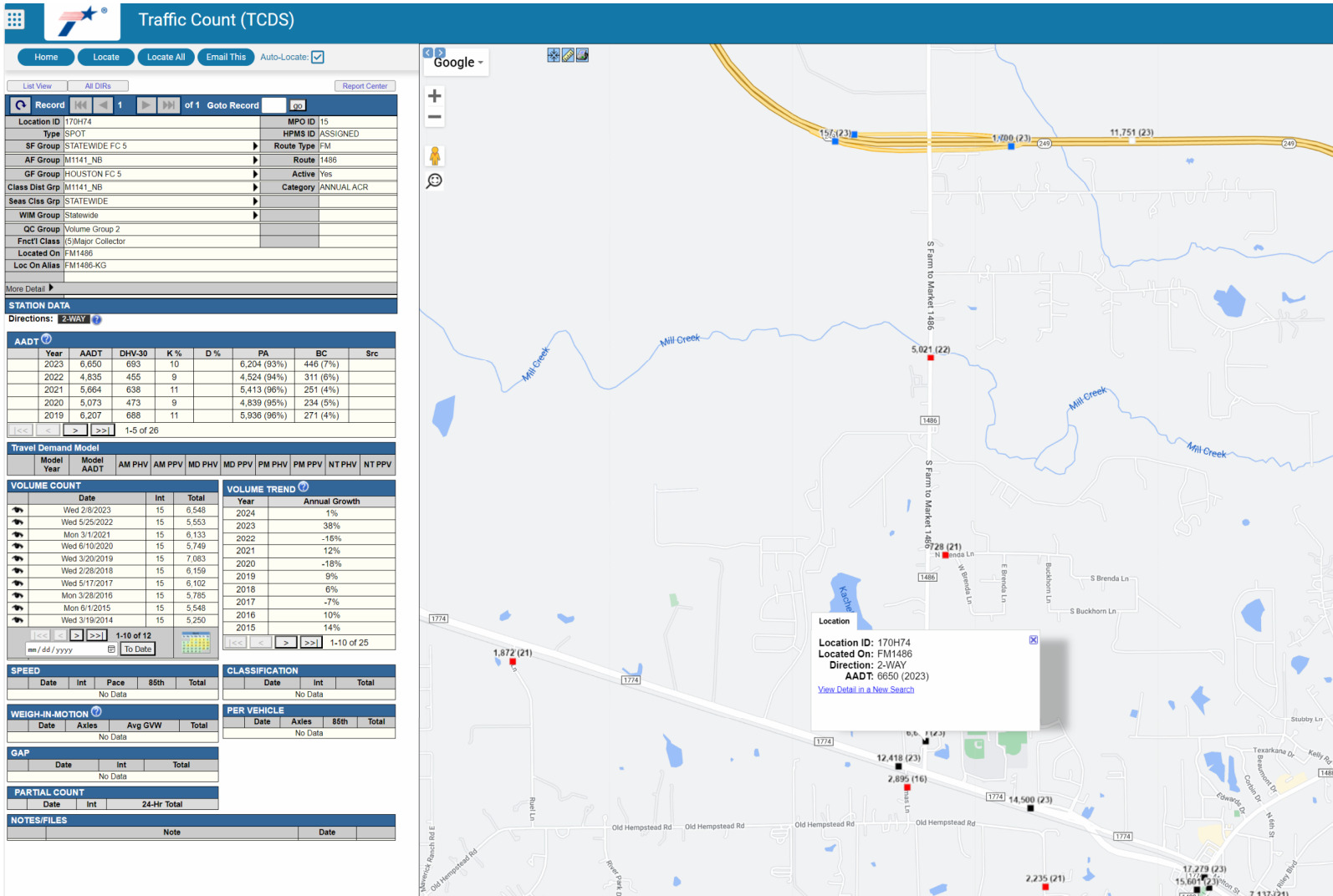
Modified Growth Table:

			Growth Rate	2.51%	1.0251
AADT	2022	4835	Known Count		
	2023	6650	Known Count		
	2024	6817			
	2025	6988			
	2026	7163			
	2027	7343			
	2028	7528			
	2029	7716			
	2030	7910			
	2031	8109			

Notes:

Based on AADT history, 2022 was a "dip" year. We decided to incorpoarte the known 2023 AADT counts into our growth table. We then projected out to Opening Year using the HGAC growth numbers.

Will use peak splits from 2023.



Posted Speed Limit

60

Estimated Free Flow Speed before Improvement

51

Average Peak Period Corridor Speed before Improvement

43.35

Average RDWY Speed after improvements

58.2

Single directional travel lane, lots of driveways (potential stops). Makes average travel speed just under speed limit for average corridor travel.

85%

Mix of school traffic and normal peak travel commutes

85% of free flow

97%

Volume Count Report

LOCATION INFO	
Location ID	170H74
Type	SPOT
Functl Class	5
Located On	FM1486
Loc On Alias	FM1486-KG
Direction	2-WAY
County	Montgomery
Community	-
MPO ID	15
HPMS ID	ASSIGNED
Agency	Texas DOT

COUNT DATA INFO	
Count Status	Accepted
Holiday	No
Start Date	Wed 2/8/2023
End Date	Thu 2/9/2023
Start Time	10:45:00 AM
End Time	10:45:00 AM
Direction	
Notes	
Station	
Study	
Speed Limit	
Description	
Sensor Type	Axle/Tube
Source	
Latitude,Longitude	30.218673, -95.770798

INTERVAL:15-MIN		15-min Interval				Hourly Count
		1st	2nd	3rd	4th	
Time						
0:00-1:00		10	8	5	3	26
1:00-2:00		4	3	2	1	10
2:00-3:00		3	3	2	3	11
3:00-4:00		0	4	3	4	11
4:00-5:00		5	14	18	13	50
5:00-6:00		21	31	41	59	152
6:00-7:00		101	153	216	253	723
7:00-8:00		192	119	132	125	568
8:00-9:00		124	93	87	84	388
9:00-10:00		74	64	91	82	311
10:00-11:00		77	80	72	57	286
11:00-12:00		75	84	89	89	337
12:00-13:00		94	93	94	77	358
13:00-14:00		84	64	102	97	347
14:00-15:00		104	107	153	138	502
15:00-16:00		103	105	128	115	451
16:00-17:00		144	139	121	119	523
17:00-18:00		141	131	137	115	524
18:00-19:00		107	114	92	73	386
19:00-20:00		71	58	53	40	222
20:00-21:00		47	44	36	37	164
21:00-22:00		26	15	23	19	83
22:00-23:00		29	17	24	15	85
23:00-24:00		10	10	4	6	30
Total						6,548
AADT						6,650
AM Peak						06:15-07:15 814
PM Peak						16:45-17:45 528

Peak Volume

Peak Vol @ Year Open to Traffic

			Growth Rate	5.91%	1.0591
723		2022	-		
568	Peak	2023	3563		
388		2024	3774		
1679		2025	3997		
		2026	4233		
		2027	4483		
		2028	4748		
		2029	5028		
451		2030	5326		
523		2031	5640		
524					
386					
1884					

3563 Total Peak Vol (2023)

Volume Count Report

LOCATION INFO	
Location ID	170H74
Type	SPOT
Functl Class	5
Located On	FM1486
Loc On Alias	FM1486-KG
Direction	2-WAY
County	Montgomery
Community	-
MPO ID	15
HPMS ID	ASSIGNED
Agency	Texas DOT

COUNT DATA INFO	
Count Status	Accepted
Holiday	No
Start Date	Wed 5/25/2022
End Date	Thu 5/26/2022
Start Time	10:00:00 AM
End Time	10:00:00 AM
Direction	
Notes	
Station	
Study	
Speed Limit	
Description	
Sensor Type	Axle/Tube
Source	
Latitude,Longitude	30.217779, -95.770901

INTERVAL:15-MIN		15-min Interval				Hourly Count
		1st	2nd	3rd	4th	
Time						
0:00-1:00		8	4	3	2	17
1:00-2:00		4	2	4	1	11
2:00-3:00		2	2	3	4	11
3:00-4:00		3	4	4	4	15
4:00-5:00		7	8	14	18	47
5:00-6:00		25	25	31	36	117
6:00-7:00		57	56	77	70	260
7:00-8:00		90	103	114	95	402
8:00-9:00		87	94	89	100	370
9:00-10:00		75	65	59	90	289
10:00-11:00		62	70	66	73	271
11:00-12:00		63	59	77	85	284
12:00-13:00		91	90	83	85	349
13:00-14:00		85	84	74	75	318
14:00-15:00		80	76	74	88	318
15:00-16:00		83	94	83	91	351
16:00-17:00		99	118	98	119	434
17:00-18:00		118	112	128	112	470
18:00-19:00		148	103	97	71	419
19:00-20:00		78	81	56	61	276
20:00-21:00		52	67	43	54	216
21:00-22:00		47	38	43	40	168
22:00-23:00		20	23	26	16	85
23:00-24:00		18	10	15	12	55
Total						5,553
AADT						4,835
AM Peak						07:00-08:00 402
PM Peak						17:15-18:15 500