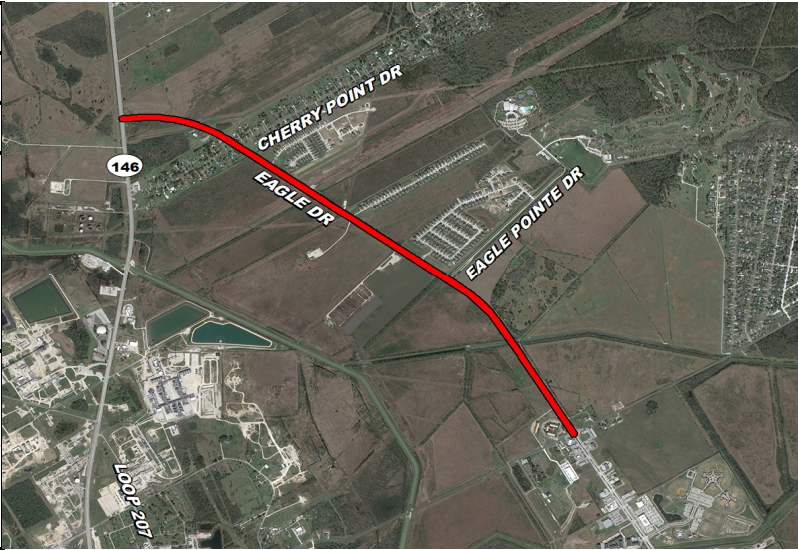


**CITY OF MONT BELVIEU, TEXAS
2018–2028 CAPITAL IMPROVEMENTS PLAN**

Project Name	Eagle Dr. from FM 565 to SH 146
Project Category	Transportation
Project Number	TBD
Project Description	Reconstruction of Eagle Dr. from FM 565 to SH 146 from undivided 2-lane roadway to divided 4-lane boulevard.
Project Justification	New development north of FM 565 necessitates increased roadway capacity to better serve community members.



Notes:
(1) Construction unit costs adapted from reconstruction costs for Eagle Drive between Interstate 10 and FM 565 (2011).
(2) Project in 5 to 10 year range.
(3) Contingent upon grant funding (80% grant, 20% local).
(4) Inflation calculated from 2011 base year.

Project Costs	Prior Budget	Projected Allocations by Fiscal Year										TOTAL
		18/19	19/20	20/21	21/22	22/23	23/24	24/25	25/26	26/27	27/28	
Land Acquisition												-
Design and Surveying									2,710,000			2,710,000
Construction									18,031,000			18,031,000
Contingency and Inflation									6,627,000			6,627,000
TOTAL	-	-	-	-	-	-	-	-	27,368,000	-	-	27,368,000

Funding Sources	Prior Funding	Projected Allocations by Fiscal Year										TOTAL
		18/19	19/20	20/21	21/22	22/23	23/24	24/25	25/26	26/27	27/28	
Bond - Series 2014												-
Bond - Series 2015												-
Bond - Series 2016												-
Bond - Series 2017A												-
Bond - Series 2019												-
Bond - Series 2020												-
Bond - Series 2021												-
Bond - Series 2022												-
Bond - Series 2024												-
Bond - Series 2025												-
Bond - Series 2026												-
Bond - Series 2027												-
Bond - Series 2028												-
Grant									21,894,400			21,894,400
Impact fees												-
Unallocated funds									5,473,600			5,473,600
TOTAL	-	-	-	-	-	-	-	-	27,368,000	-	-	27,368,000