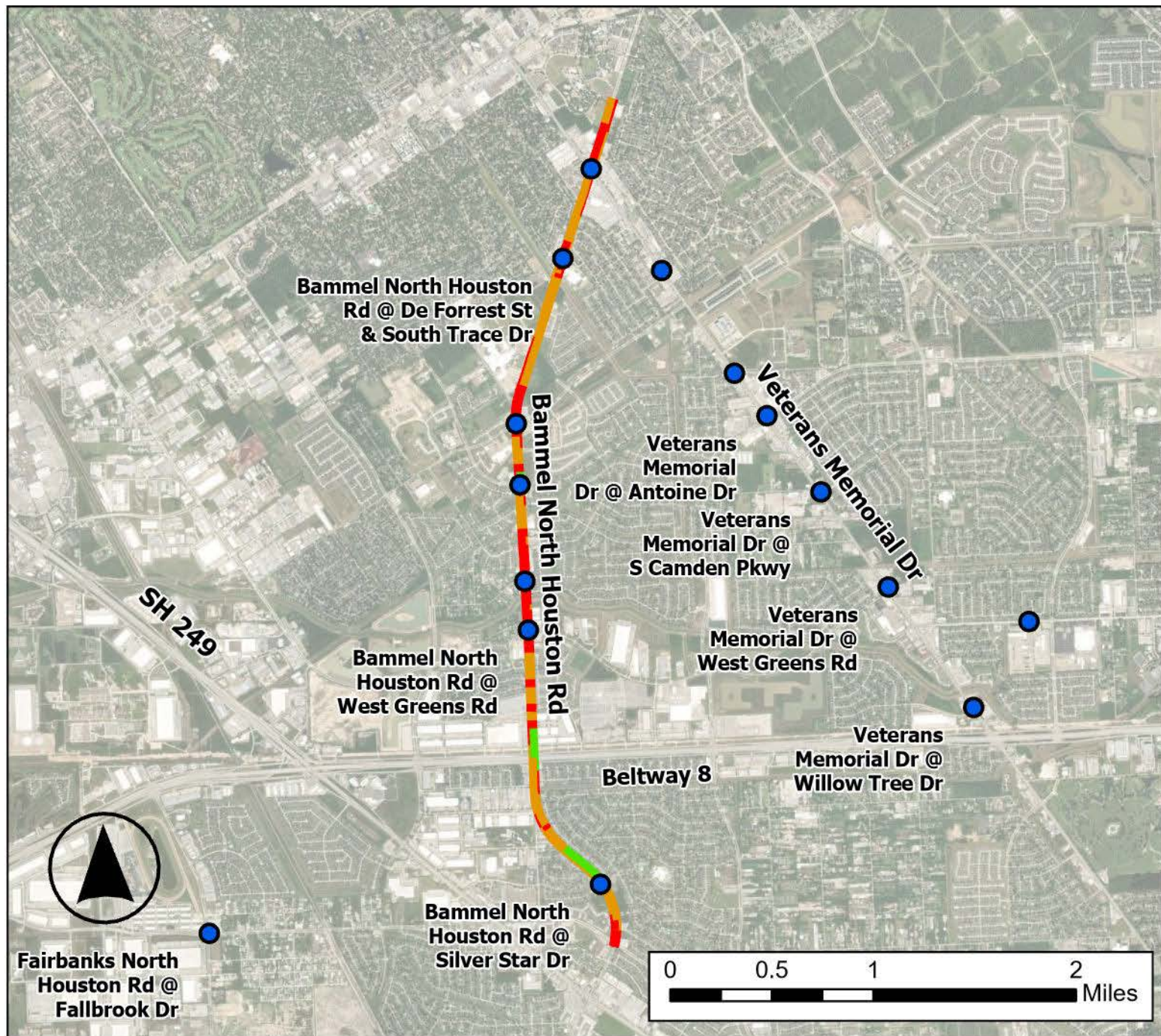


Bammel Corridor Congestion



Source of Data: StreetLight Data

Methodology: Congestion Percentage for each segment was calculated using the Network Performance Analysis tool in the StreetLight Data Insight platform by finding the ratio between free flow speed and average speed during peak PM hours (3pm-7pm), Monday - Thursday. Source data year: 2023.

Legend

● Proposed Intersection Improvement

Congestion

Under 10%

10%-20%

Over 20%

Fairbanks Corridor Congestion



Source of Data: StreetLight Data

Methodology: Congestion Percentage for each segment was calculated using the Network Performance Analysis tool in the StreetLight Data Insight platform by finding the ratio between free flow speed and average speed during peak PM hours (3pm-7pm), Monday - Thursday. Source data year: 2023.

Legend

- Proposed Intersection Improvement
- Congestion
 - Under 10%
 - 10%-20%
 - Over 20%

Gears Rd. Corridor Congestion



Source of Data: StreetLight Data

Methodology: Congestion Percentage for each segment was calculated using the Network Performance Analysis tool in the StreetLight Data Insight platform by finding the ratio between free flow speed and average speed during peak PM hours (3pm-7pm), Monday - Thursday. Source data year: 2023.

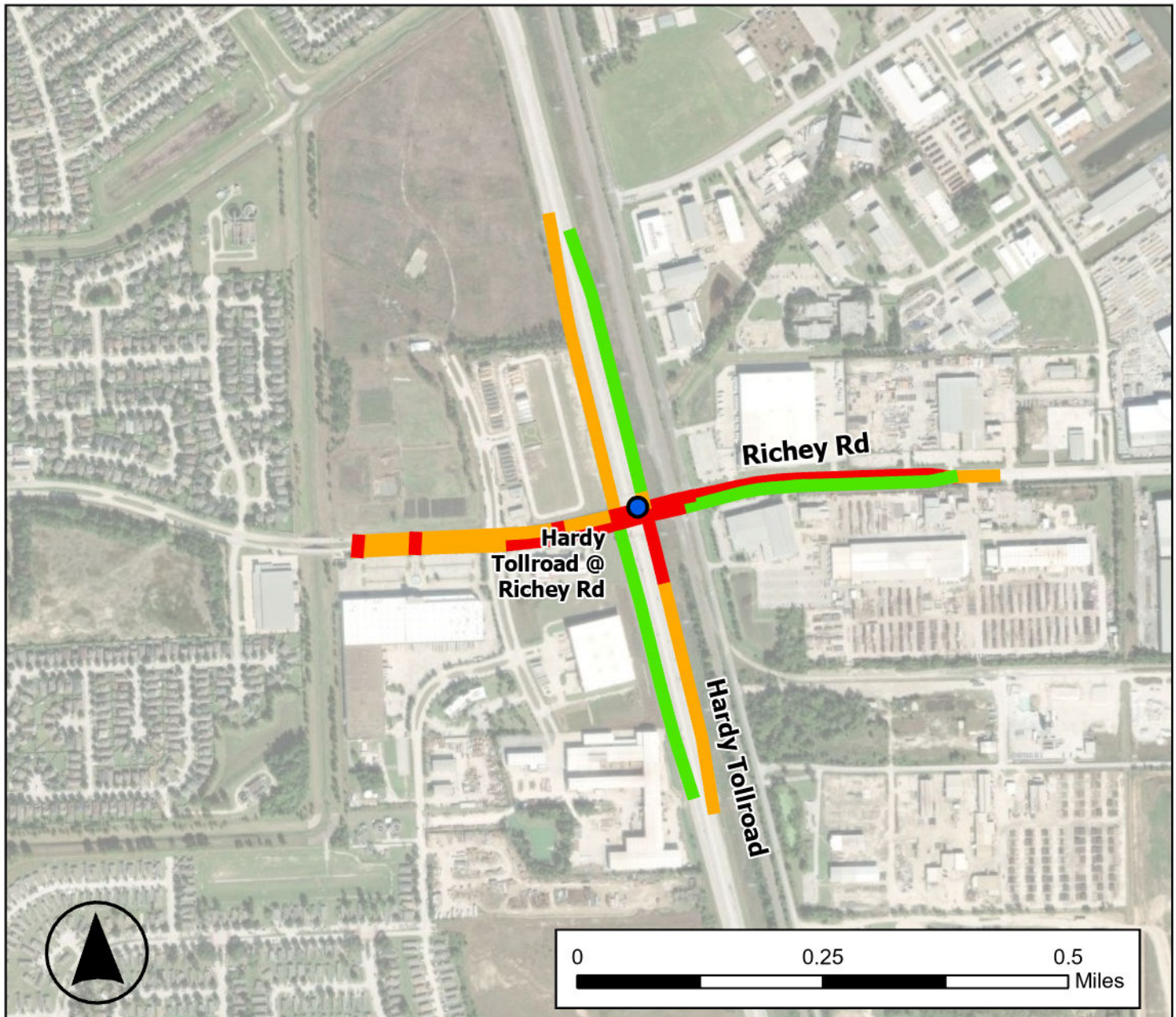
Legend

- Proposed Intersection Improvement

Congestion

- Under 10%
- 10%-20%
- Over 20%

Hardy Tollroad Corridor Congestion



Source of Data: StreetLight Data

Methodology: Congestion Percentage for each segment was calculated using the Network Performance Analysis tool in the StreetLight Data Insight platform by finding the ratio between free flow speed and average speed during peak PM hours (3pm-7pm), Monday - Thursday. Source data year: 2023.

Legend

● Proposed Intersection Improvement

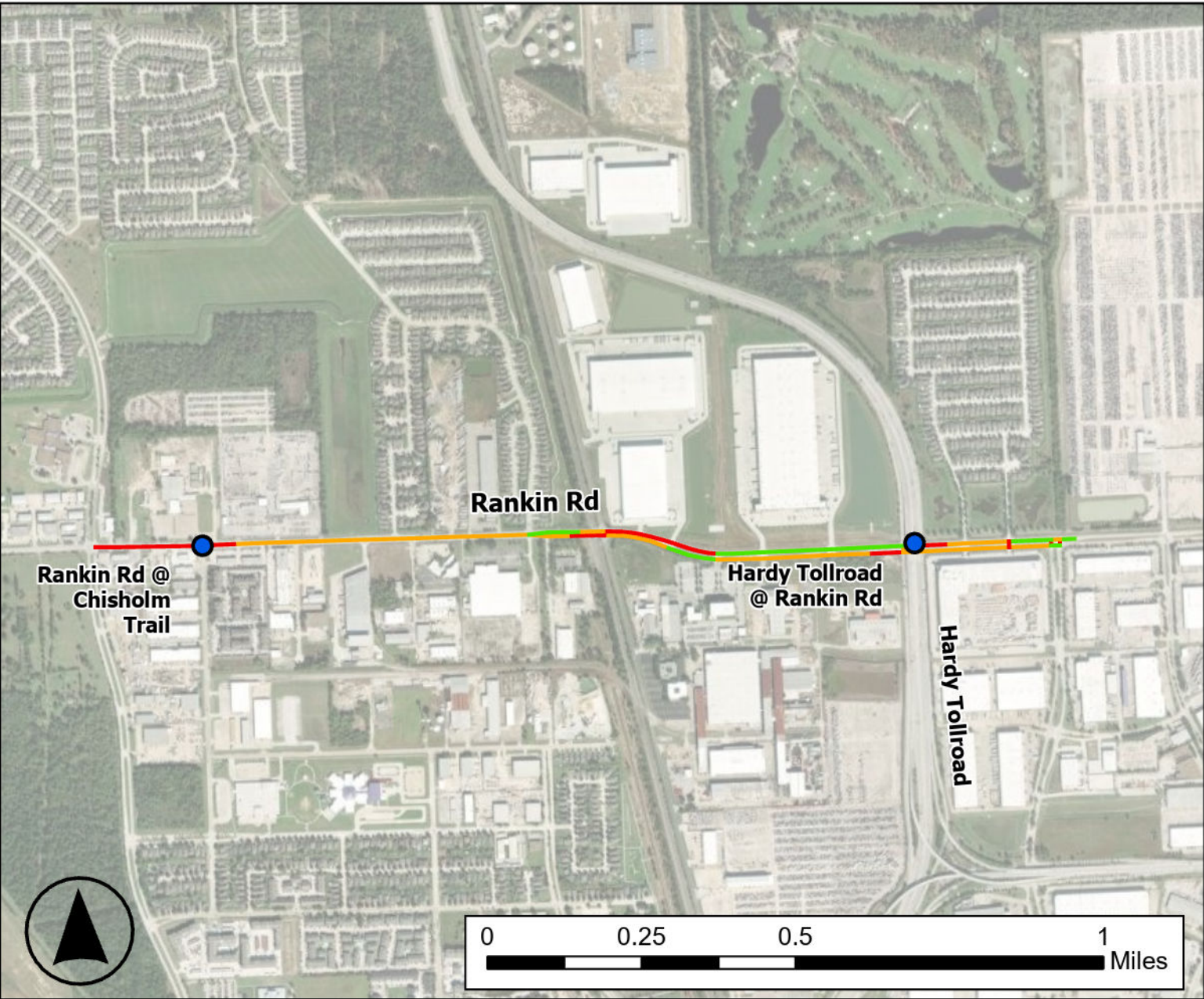
Congestion

■ Under 10%

■ 10%-20%

■ Over 20%

Rankin Corridor Congestion



Source of Data: StreetLight Data

Methodology: Congestion Percentage for each segment was calculated using the Network Performance Analysis tool in the StreetLight Data Insight platform by finding the ratio between free flow speed and average speed during peak PM hours (3pm-7pm), Monday - Thursday. Source data year: 2023.

Legend

Proposed Intersection Improvement

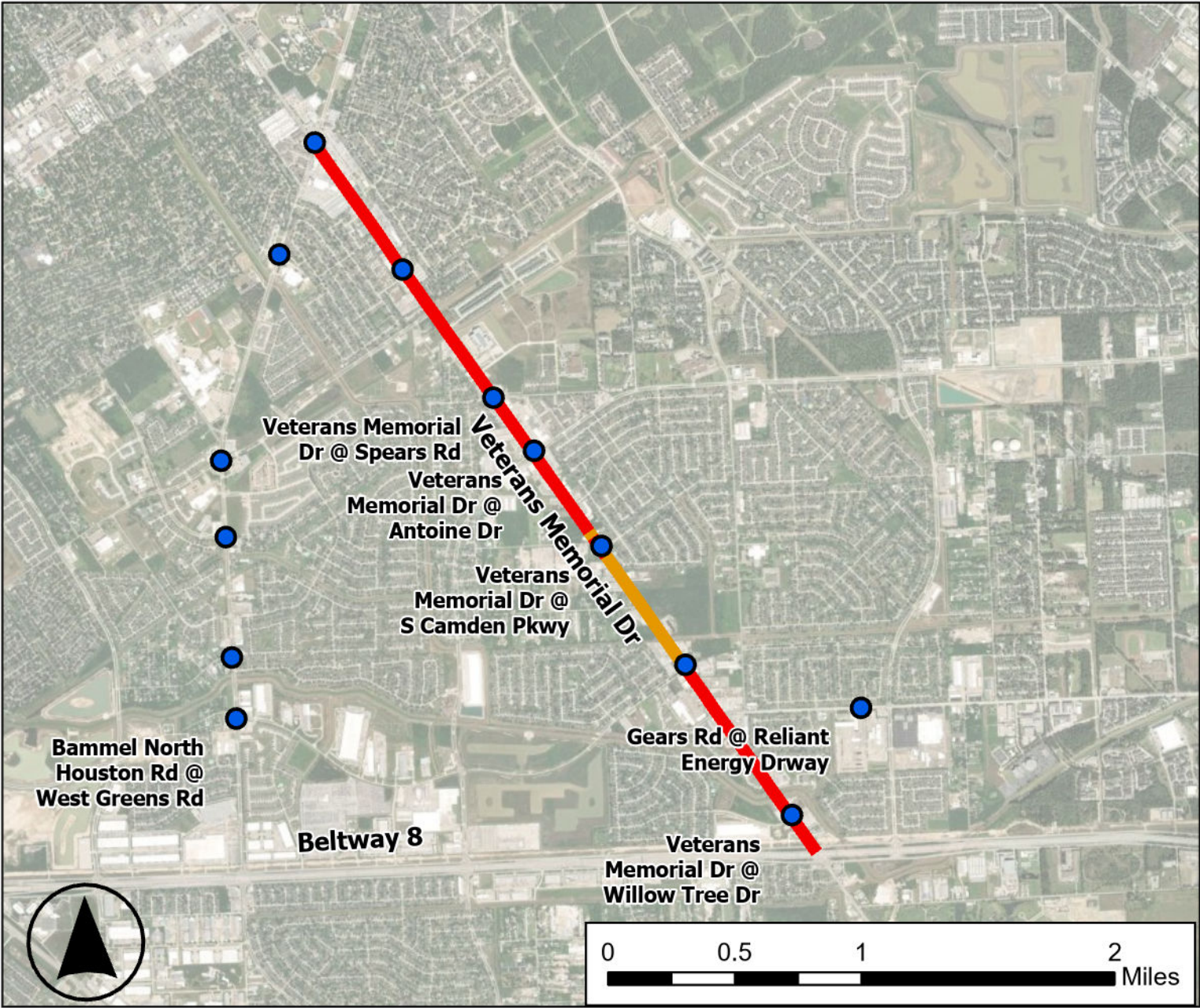
Congestion

Under 10%

10%-20%

Over 20%

Veterans Memorial Corridor Congestion



Source of Data: StreetLight Data

Methodology: Congestion Percentage for each segment was calculated using the Network Performance Analysis tool in the StreetLight Data Insight platform by finding the ratio between free flow speed and average speed during peak PM hours (3pm-7pm), Monday - Thursday. Source data year: 2023.

Legend

Proposed Intersection Improvement

Congestion

10%-20%

Over 20%