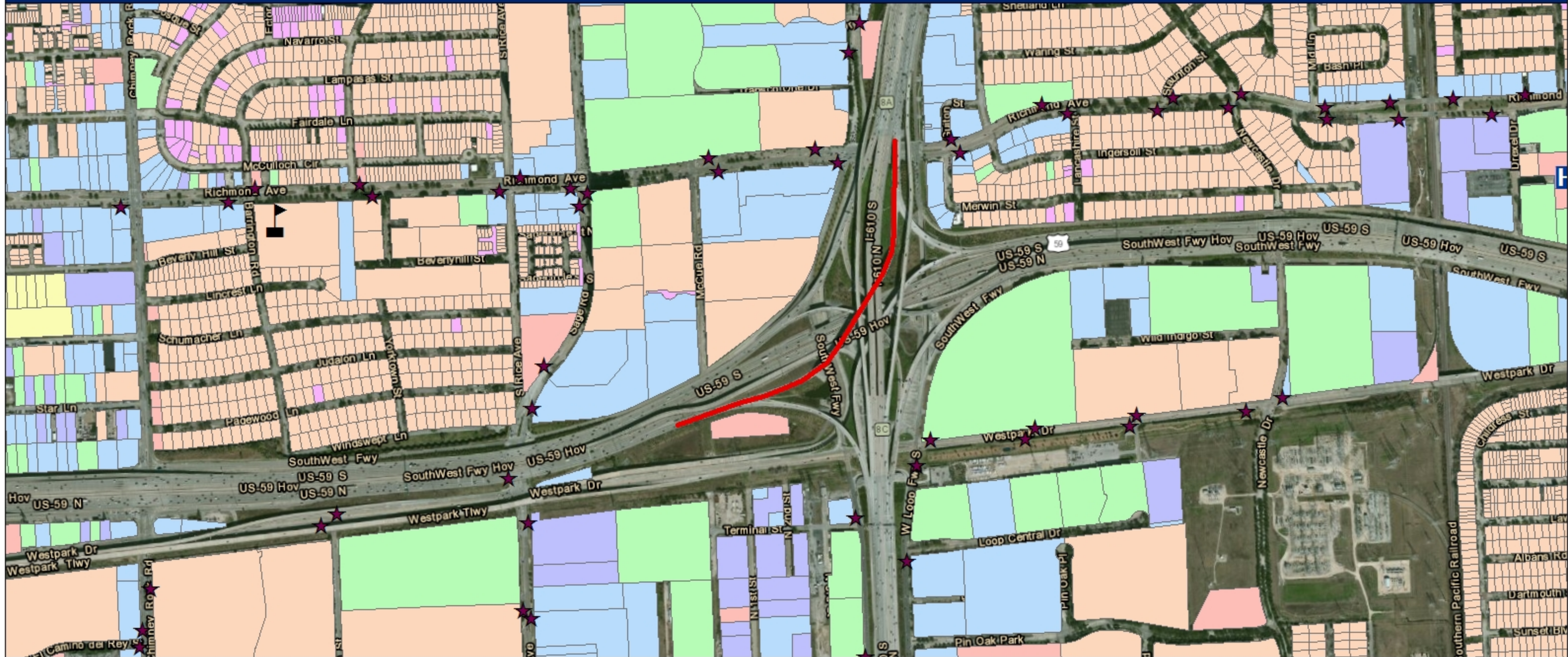


US 59 Direct Connector at IH 610



Description: Reconstruction of Direct Connector (Phase 2)

Legend : (Source: H-GAC)

- | | |
|---------------------------------------|-----------------------------|
| Commercial | Proposed TxDOT TIP Projects |
| Gov/Med/Edu | Hospital |
| Government/Medical/Education | Library |
| Industrial | Metro Bus Stops |
| Multiple | Metro Park and Rides |
| Parks/Open Spaces | Schools |
| Residential | |
| Vacant Developable (includes Farming) | |

US 59 Direct Connector at IH 610



Description: Reconstruction of Direct Connector (Phase 2)

Legend : (Source: H-GAC)

- Proposed TxDOT TIP Projects
- Existing Bike Lane
- Existing Shared Use Path/Trail
- - - Existing Signed Shared Roadway
- Existing Signed Shoulder Bike Route
- - - Proposed Bike Lane
- - - Proposed Shared Use Path/Trail
- - - Proposed Signed Shared Roadway
- - - Proposed Signed Shoulder Bike Route