

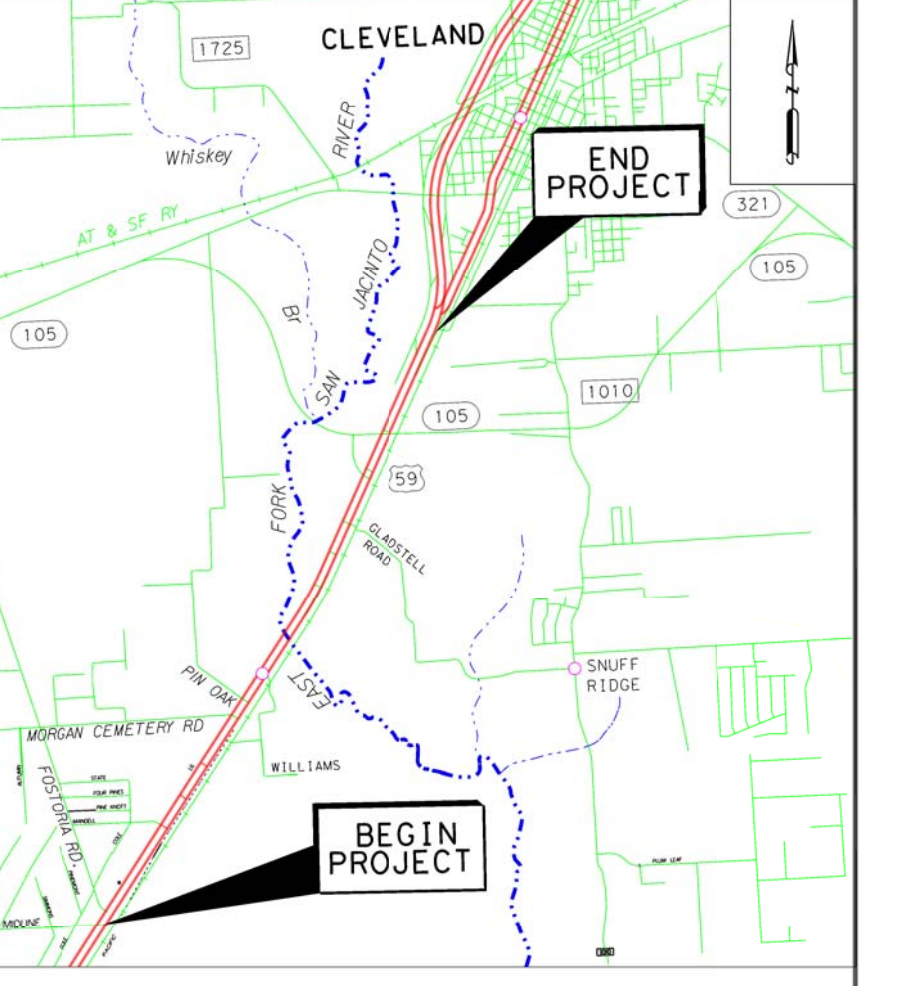
RAMP 9	
PI STATION	+ 100-74.62
DELTA	+ 2° 54' 03.56"
DEGREE OF CURVE	+ 1° 54' 03.56"
TANGENT	+ 153.21
LENGTH	+ 153.21
RADIUS	+ 14014.00
PC STATION	+ 101-53.21
PT STATION	+ 102-81.80

RAMP 10	
PI STATION	+ 106-08.27
DELTA	+ 2° 54' 03.56"
DEGREE OF CURVE	+ 1° 54' 03.56"
TANGENT	+ 153.21
LENGTH	+ 153.21
RADIUS	+ 14014.00
PC STATION	+ 107-39.09
PT STATION	+ 108-67.68

RAMP 11	
PI STATION	+ 101-30.88
DELTA	+ 2° 54' 03.56"
DEGREE OF CURVE	+ 1° 54' 03.56"
TANGENT	+ 153.21
LENGTH	+ 153.21
RADIUS	+ 14014.00
PC STATION	+ 102-61.80
PT STATION	+ 103-89.39

FRONTAGE 2	
PI STATION	+ 296-65.15
DELTA	+ 0° 43' 14.36"
DEGREE OF CURVE	+ 0° 43' 14.36"
TANGENT	+ 46.41
LENGTH	+ 46.41
RADIUS	+ 480.00
PC STATION	+ 296-18.74
PT STATION	+ 297-11.56

FRONTAGE 3	
PI STATION	+ 309-77.40
DELTA	+ 24° 00' 14.53"
DEGREE OF CURVE	+ 4° 00' 33.00"
TANGENT	+ 190.69
LENGTH	+ 281.39
RADIUS	+ 400.00
PC STATION	+ 309-77.40
PT STATION	+ 312-58.30



FUNCTIONAL CLASSIFICATION

LIBERTY COUNTY
AT
US 59

SCHEMATIC LAYOUT

BEAUMONT DISTRICT

SYMBOLS

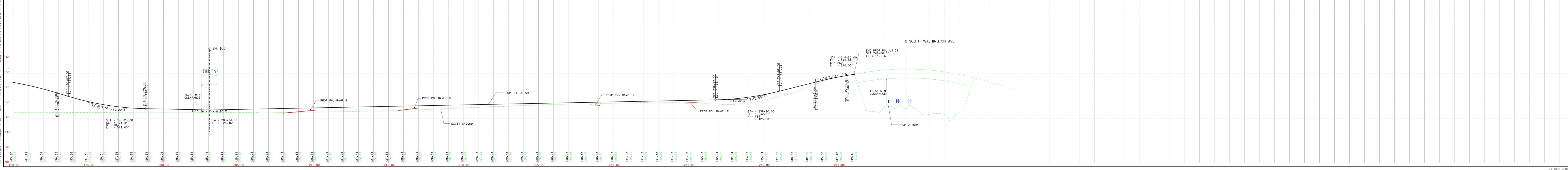
US 59 CENTERLINE
MAIN LANES
FRONTAGE ROADS/TURNAROUNDS
RAMP

PLAN LEGEND

US 59 CENTERLINE
MAIN LANES
FRONTAGE ROADS/TURNAROUNDS
RAMP

PROF (V) LEGEND

PROP. FRONTAGE PCL
PROP. RAMP PCL
EXISTING GROUND # PCL
100 HR. W.S.E.
50 HR. W.S.E.



PRELIMINARY

NOT A BIDDING DOCUMENT

WASHINGTON, TEXAS, P.C.
2444 WESTLAND, SUITE 200
WWW.AECOM.COM
TYPE: REG. NO. F-3380

AECOM

US 59 SCHEMATIC
ULTIMATE

STA. 190+00.00 TO END PROJECT
SHEET 5 OF 4