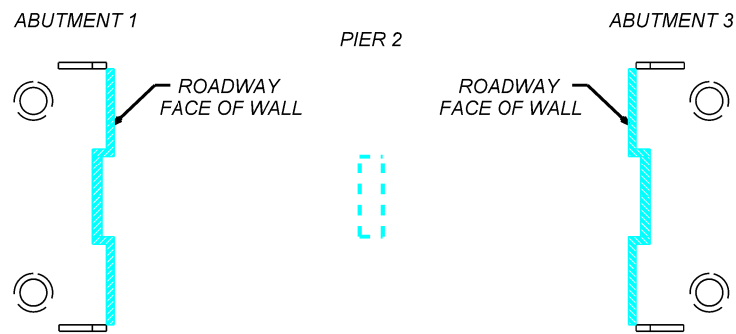
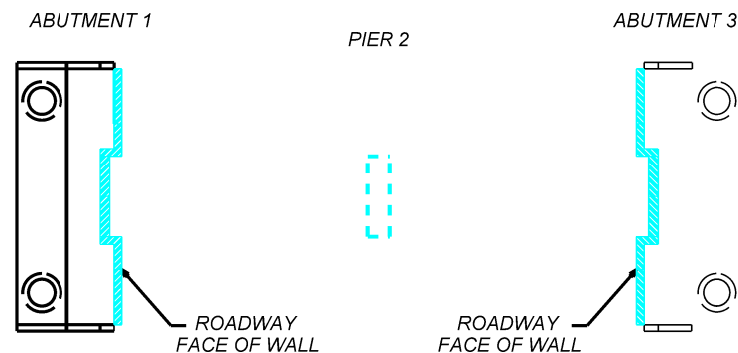


### STAGE 1



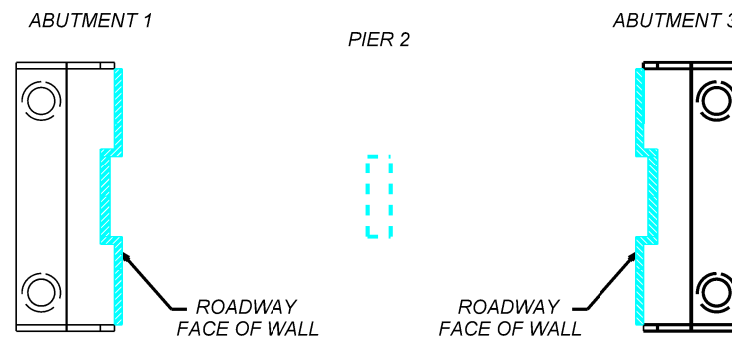
- Stage 1:
1. Drill shafts for Abutments 1 and 3. Casing shall extend to ground surface. Place concrete in shafts up to construction joint elevation.

### STAGE 2



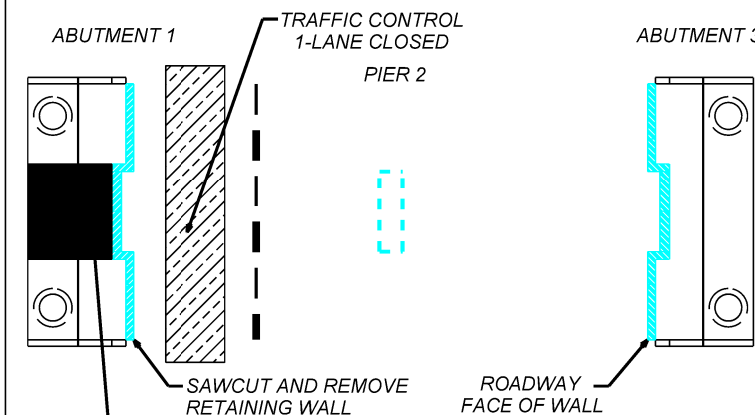
- Stage 2:  
During a window in rail traffic:
1. Remove track at Abutment 1 and excavate for setting precast cap.
  2. Cut drilled shaft casings to bottom of cap elevation.
  3. Set precast cap on shafts.
  4. Set reinforcing cages for drilled shaft to precast cap connections.
  5. Place concrete for drilled shaft to precast cap connections.
  6. After concrete has achieved its initial set, backfill around cap.
  7. Replace track.
  8. Resume rail traffic.

### STAGE 3



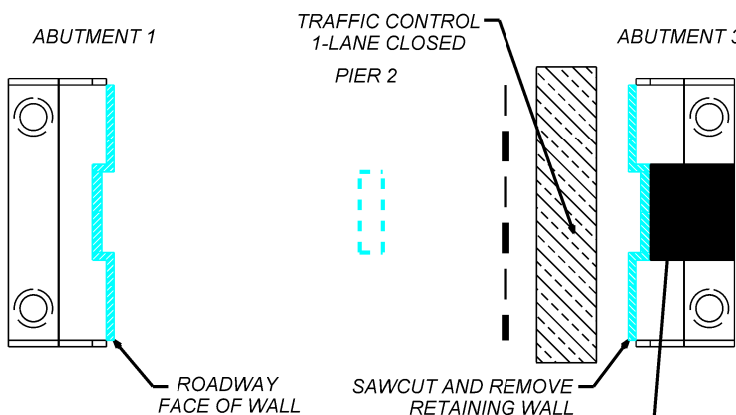
- Stage 3:  
During a window in rail traffic:
1. Remove track at Abutment 3 and excavate for setting precast cap.
  2. Cut drilled shaft casings to bottom of cap elevation.
  3. Set precast cap on shafts.
  4. Set reinforcing cages for drilled shaft to precast cap connections.
  5. Place concrete for drilled shaft to precast cap connections.
  6. After concrete has achieved its initial set, backfill around cap.
  7. Replace track.
  8. Resume rail traffic.

### STAGE 4



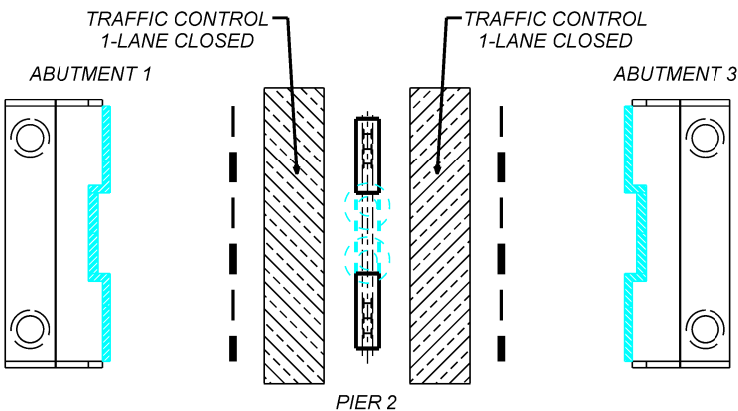
- Stage 4:
1. Close lane next to Abutment 1 for 8 hours to remove retaining wall.
  2. Remove retaining wall to bottom of existing girder level.

### STAGE 5



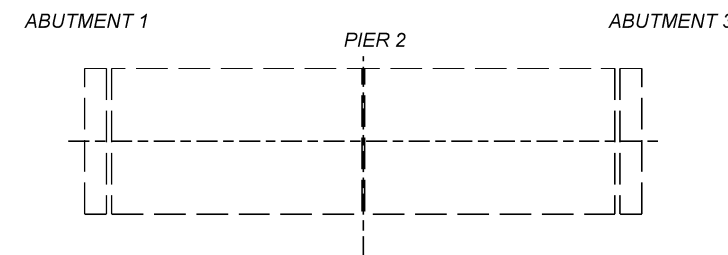
- Stage 4:
1. Close lane next to Abutment 3 for 8 hours to remove retaining wall.
  2. Remove retaining wall to bottom of existing girder level.

### STAGE 6



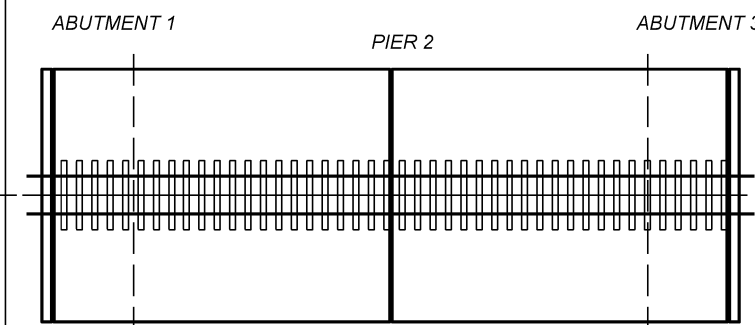
- Stage 6:
1. Close both inside lanes adjacent to Pier 2 for 2 weeks.
  2. Drive H-Pile foundations for Pier 2.
  3. Form and pour cast-in-place footing, wall support and cap.
  4. Remove forms and clean-up.

### STAGE 7A



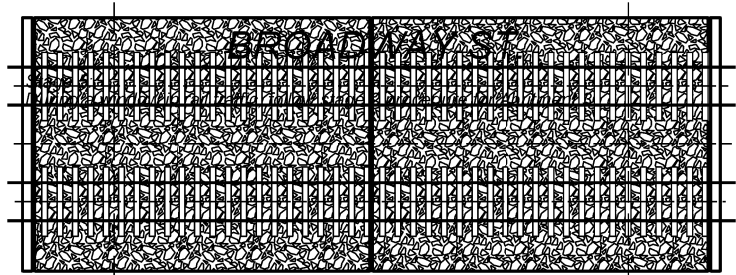
- Stage 7:
1. Suspend railroad traffic for 36 hours. (Saturday thru Monday AM).
  2. Remove existing railroad bridge.
  3. Remove Trench Boxes Abut. 1 & Abut. 3.
  3. Require detour of vehicular traffic for 24 hours.

### STAGE 7B



- Stage 7:
1. Install new bridge.
  2. Replace 1 track on new bridge.

### STAGE 8



- Stage 8:
- Complete remaining work (handrails, site cleanup, etc.)

- NOTES:
1. FOR GENERAL NOTES, SEE SHEET B002.

- CONCEPTUAL -  
FOR REVIEW/DISCUSSION

<b>LJA Engineering, Inc.</b> 2929 Briarpark Drive Suite 600 Houston, Texas 77042 Phone 713.953.5200 Fax 713.953.5026 FRN - F-1386		DRAWN BY: BR	<b>PORT TERMINAL RAILROAD</b> 8934 Manchester Street Houston, Texas 77012 Phone 713.393.6500 Fax 713.393.6673
		CHECKED BY: MB	
		DATE: 05/30/14	PROJECT DESCRIPTION: BROADWAY SECOND MAIN TRACK IMPROVEMENTS
		SHEET NUMBER of 001	SHEET DESCRIPTION: SUGGESTED CONSTRUCTION SEQUENCE SHEET NAME: B003