

INPUTS

Project Identification	
Name:	FM 1960
Application ID Number:	300792
Sponsor ID Number (CSJ, etc.):	

Improvement Information	
Year Open to Traffic? (Must be >=2018)	2018
Appropriate Crash Reduction Factor (%):	46%
Service Life (years):	20

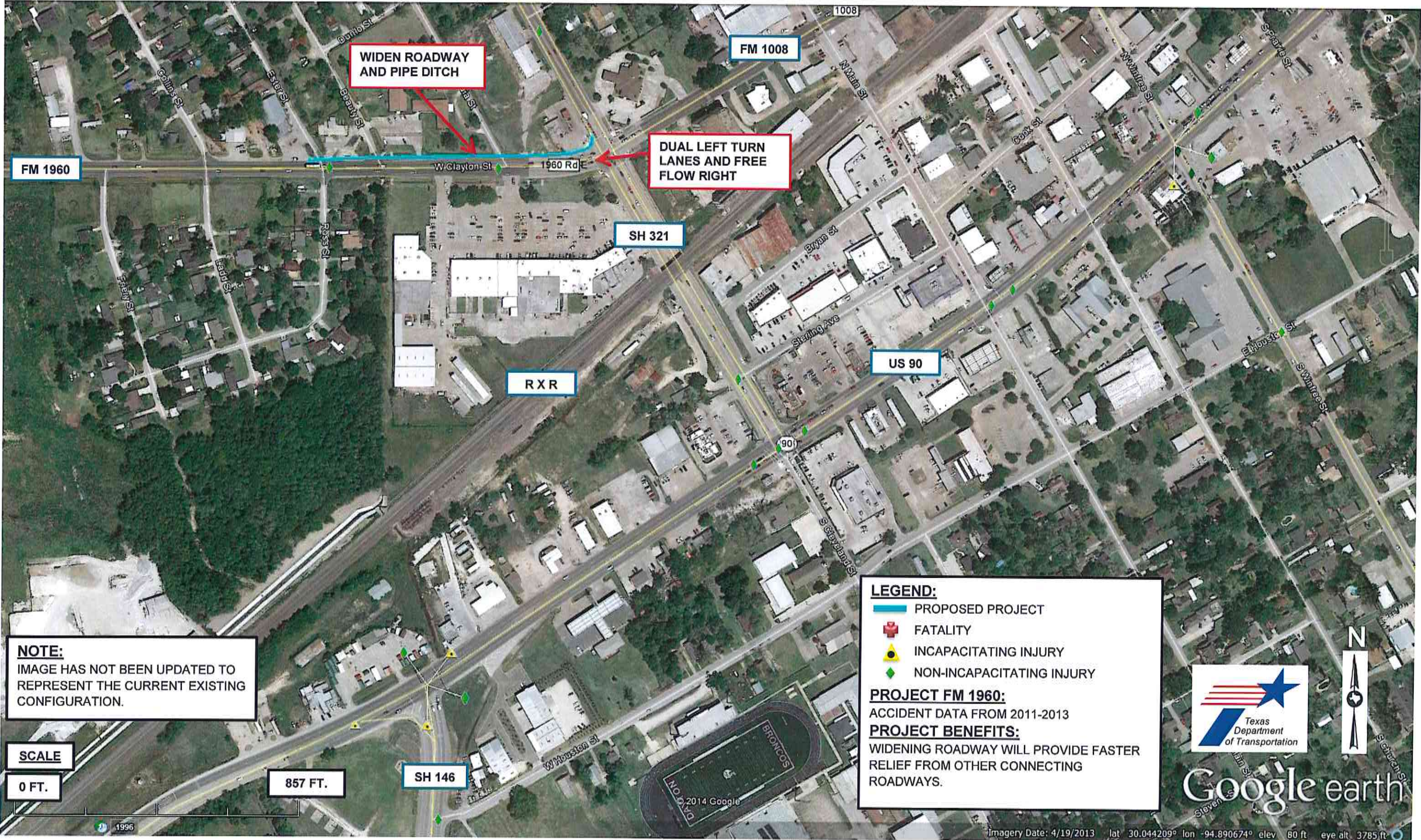
Daily Travel Demand	With Project
2018 Volume	12,700
2018 Capacity	27,600
2025 Volume	13,200
2025 Capacity	27,600
2040 Volume	13,900
2040 Capacity	27,600

Import from Crash History Data Tab?

Preventable Crash History	Year 1	Year 2	Year 3	Average
Death_Cnt	0	0	0	0.00
Incap_Injry_Cnt	0	0	0	0.00
Nonincap_Injry_Cnt	0	1	0	0.33
Poss_Injry_Cnt	0	1	0	0.33
Non_Injry_Cnt	2	1	1	1.33
Unkn_Injry_Cnt	0	0	0	0.00

OUTPUTS

Benefit Results	
Discounted Safety Benefits @ 7% (2015 \$, '000s)	\$296
Discounted Safety Benefits @ 3% (2015 \$, '000s)	\$451



NOTE:
 IMAGE HAS NOT BEEN UPDATED TO REPRESENT THE CURRENT EXISTING CONFIGURATION.

SCALE
 0 FT. 857 FT.

LEGEND:

- PROPOSED PROJECT
- + FATALITY
- ▲ INCAPACITATING INJURY
- ◆ NON-INCAPACITATING INJURY

PROJECT FM 1960:
 ACCIDENT DATA FROM 2011-2013

PROJECT BENEFITS:
 WIDENING ROADWAY WILL PROVIDE FASTER RELIEF FROM OTHER CONNECTING ROADWAYS.



Google earth