



# ENVIRONMENTAL DESIGN MASTER PLAN

*INTERNATIONAL MANAGEMENT DISTRICT*

*November 11, 2009*

**M2L Associates, Inc.**  
Planners & Landscape Architects

*Minor Design, AECOM*

INTERNATIONAL MANAGEMENT DISTRICT



## **MASTER PLAN GOAL**

- 1. Enhance the Visual Appeal**
- 2. Attract and Retain Investors / Residents**
- 3. Increase Property Values**
- 4. Promote a safe community**
- 5. Facilitate Business Development**
- 6. Leverage the District Resources**



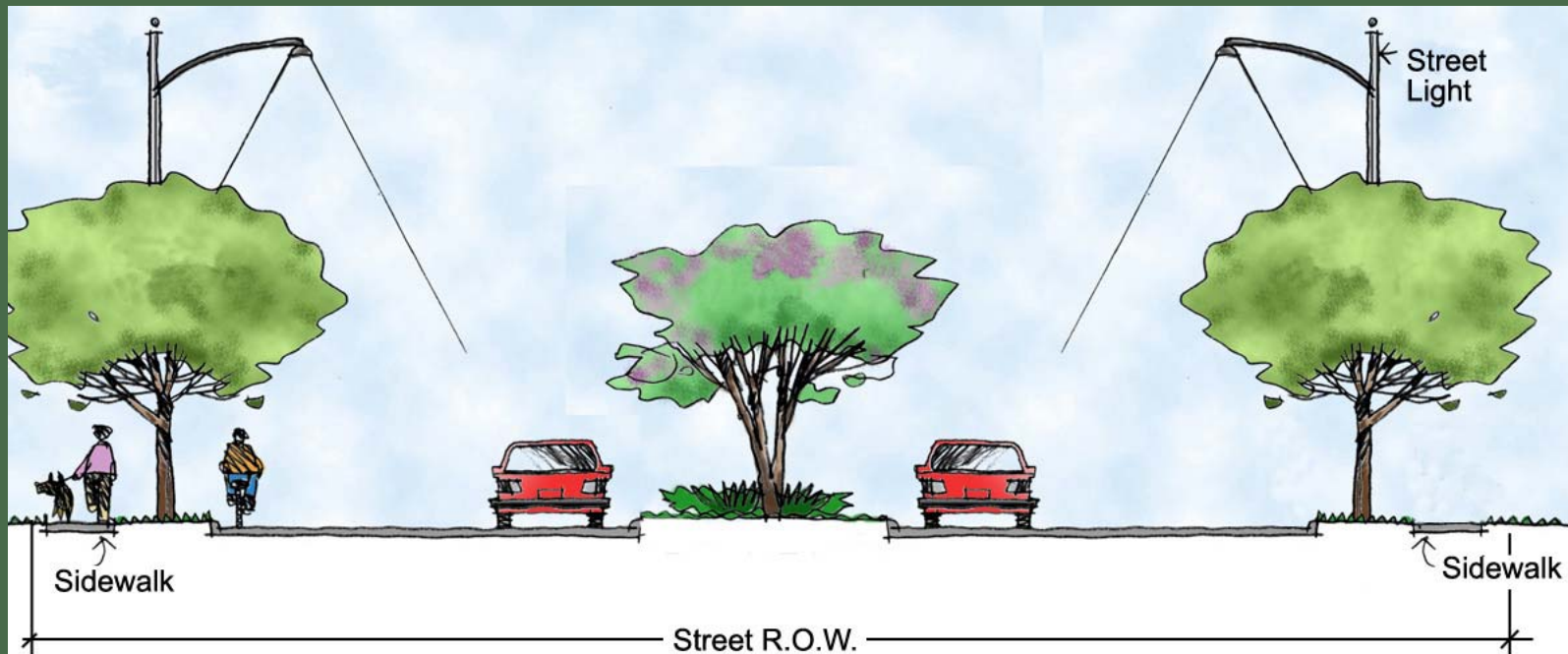
## **MASTER PLAN OBJECTIVES**

- 1. Systems Inventory**
- 2. Identify Strengths and Weaknesses**
- 3. Develop Wayfinding Signage**
- 4. Mass Transit Interface**
- 5. Parks and Open Space Coordination**
- 6. Develop District Design Vision**
- 7. Create District Branding and Logo**



## *The proposed design elements under consideration:*

- *Street Lights*
- *Landscaping*
- *Signage/Monuments*
- *Special Paving*
- *Sidewalks/Ramps*
- *Parks and Open Spaces*
- *Mid Block Seating Areas*
- *Parking/Service Screening*
- *Bus Shelters*
- *Street Furniture*
- *Public Art*
- *Seating Areas*
- *Bicycle Facilities*
- *Freeway Enhancements*

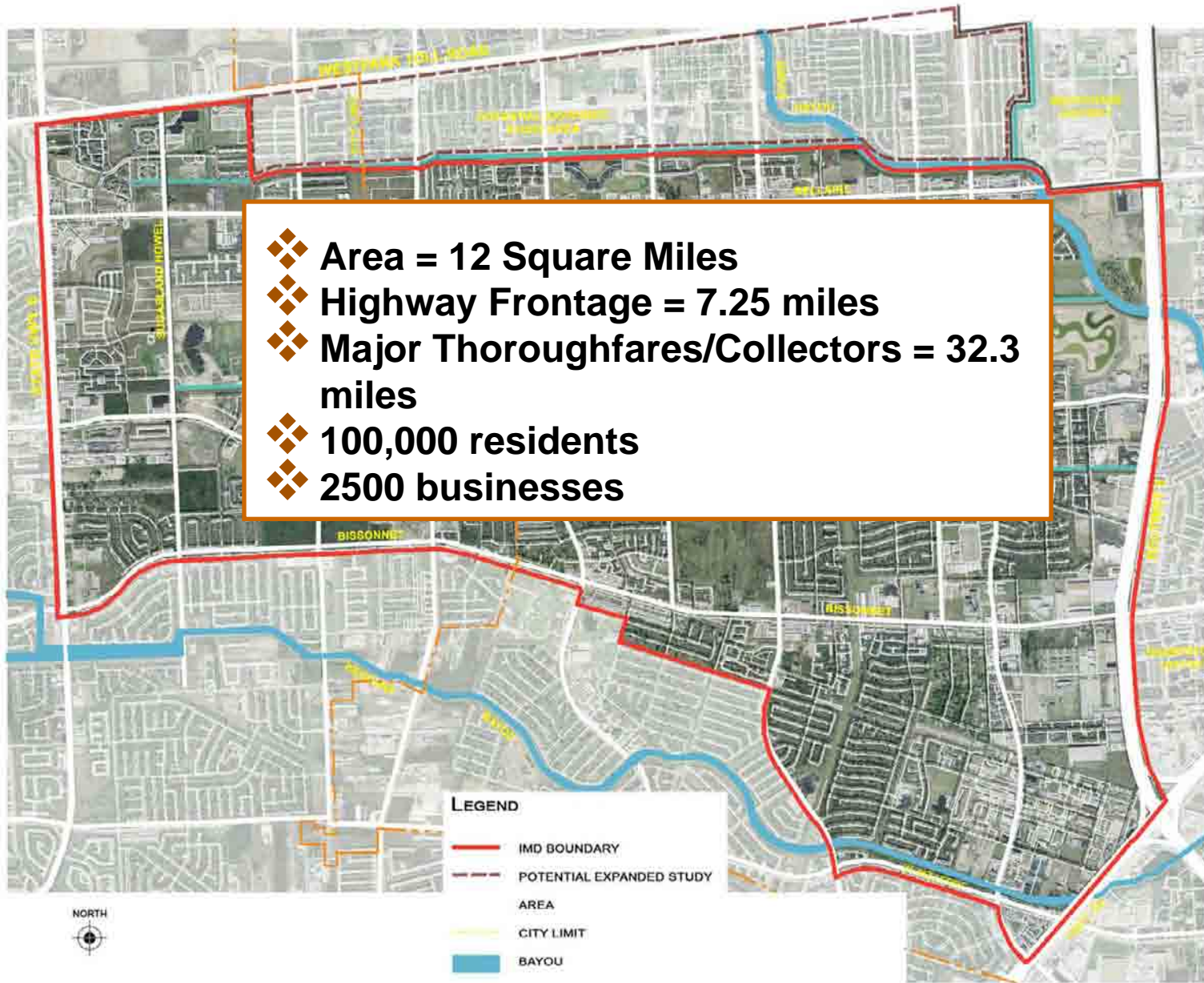


**SCOPE OF WORK LIMITS**



## **SITE INVENTORY**

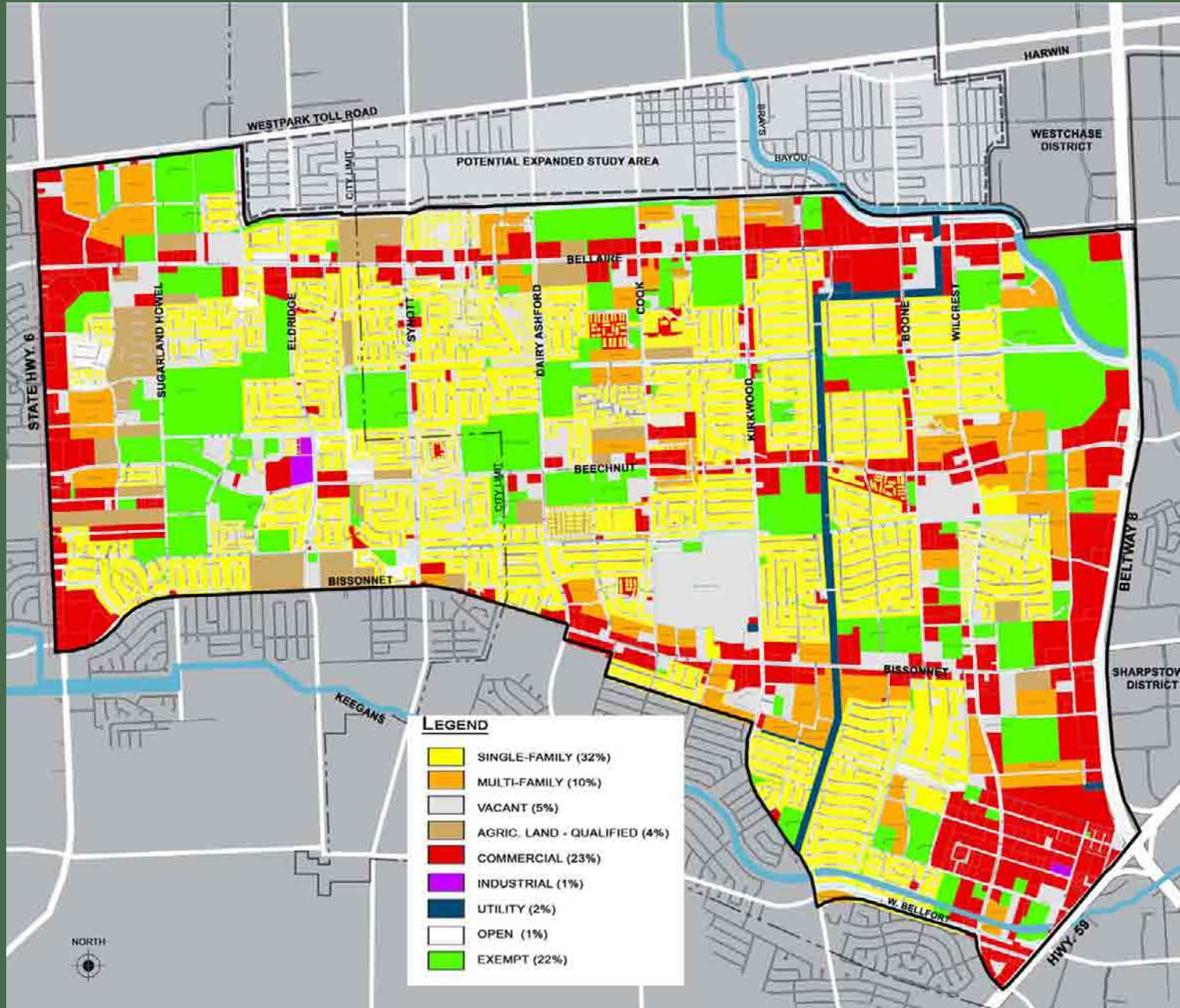
- 1. Land Use**
- 2. Areas of Interest**
- 3. Major Thoroughfare Plan**
- 4. Traffic Volumes**
- 5. Mass Transit**
- 6. Parks and Open Spaces**
- 7. Infrastructure**







INTERNATIONAL MANAGEMENT DISTRICT

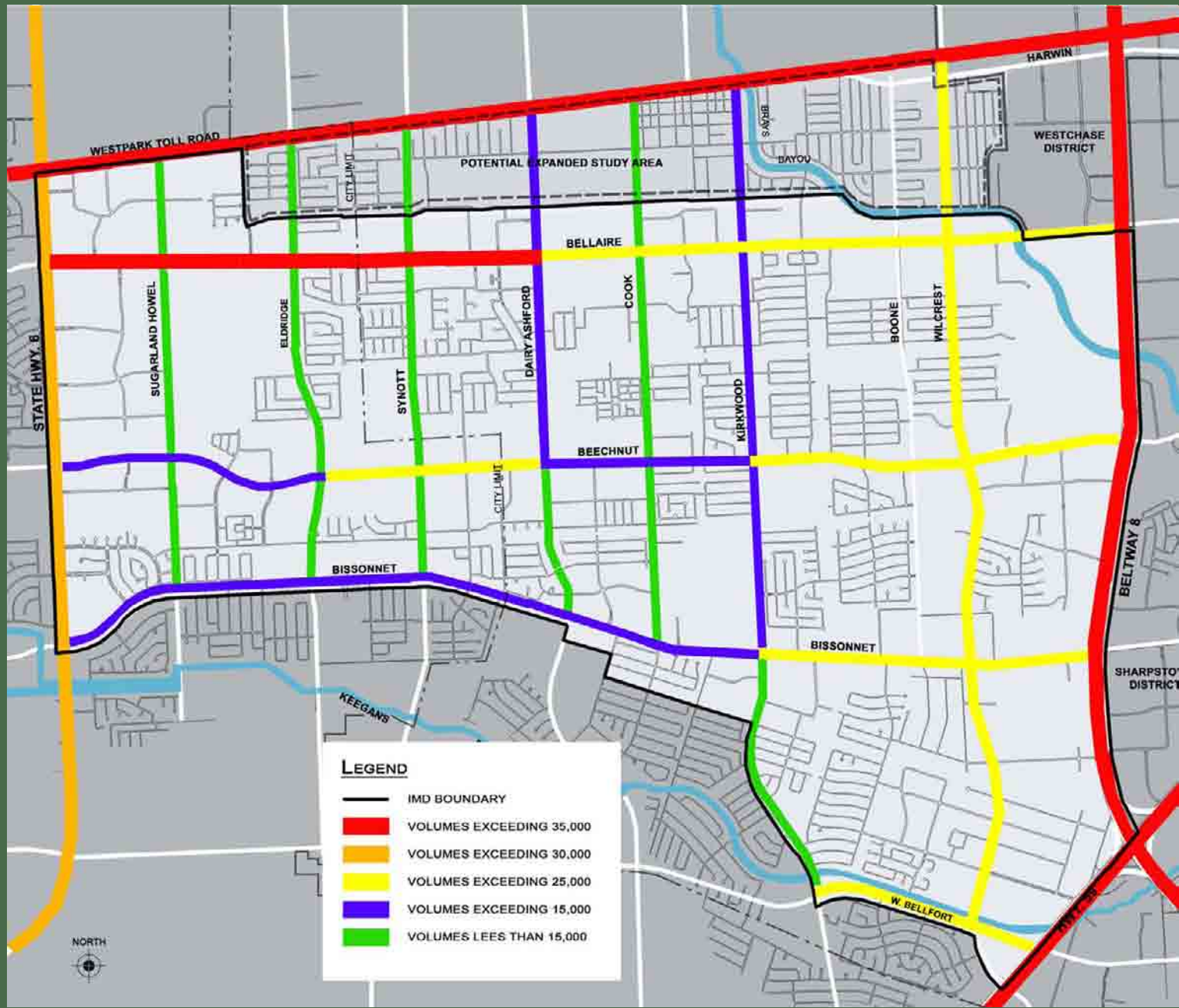


INVENTORY

LAND USE



INTERNATIONAL MANAGEMENT DISTRICT



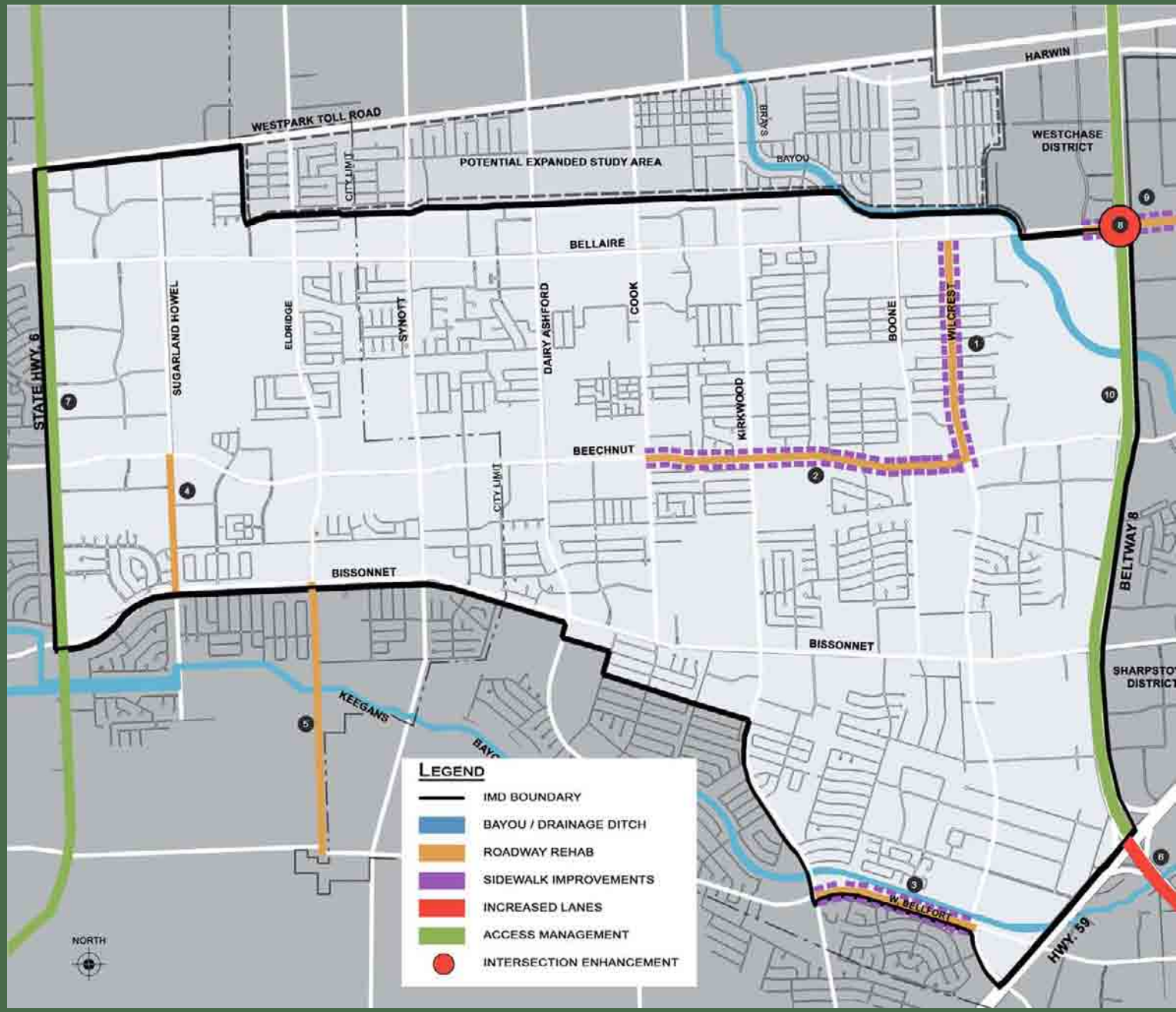
INVENTORY

TRANSPORTATION





# INTERNATIONAL MANAGEMENT DISTRICT



INVENTORY

INFRASTRUCTURE



INTERNATIONAL MANAGEMENT DISTRICT



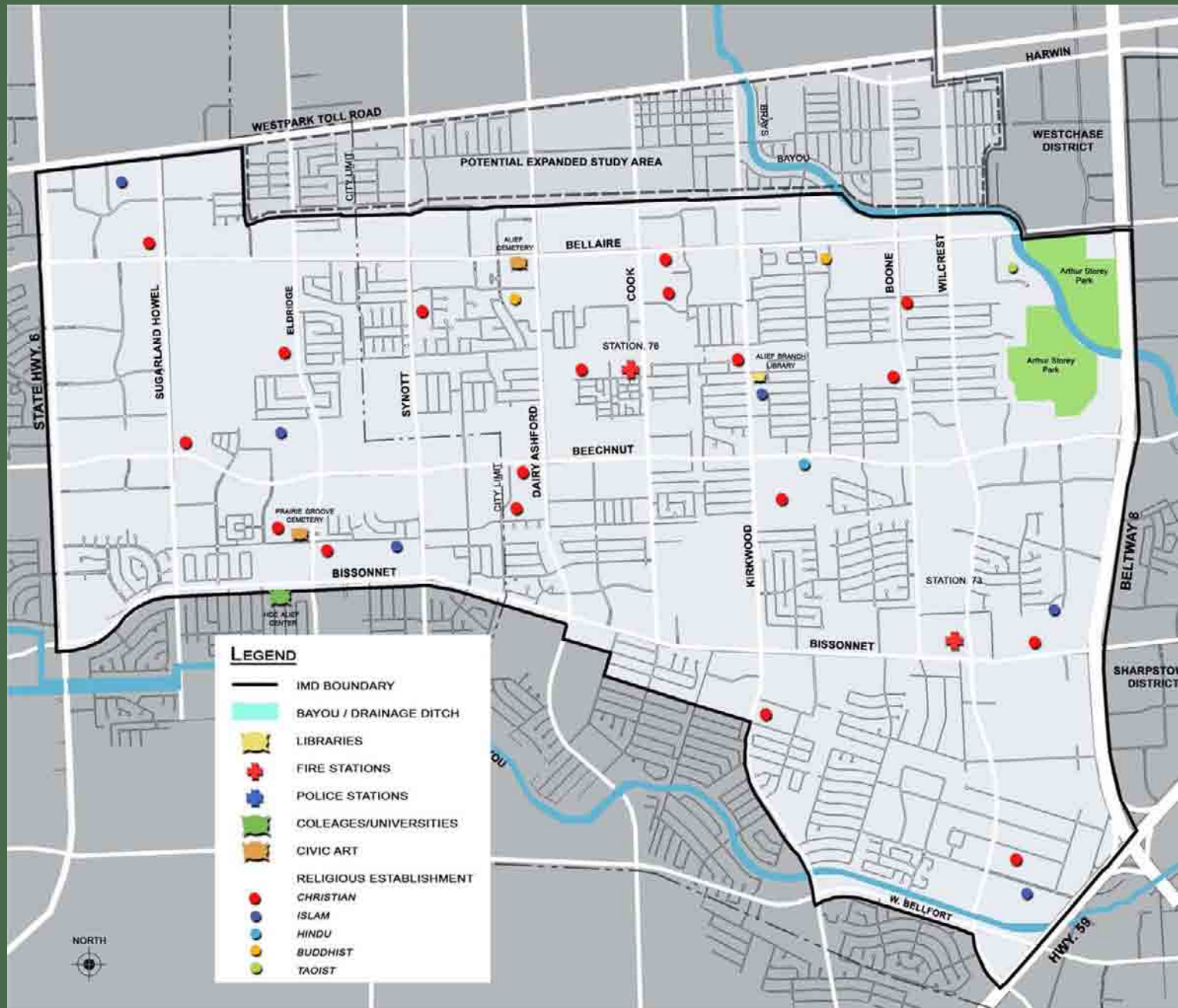
INVENTORY

MASS TRANSIT





INTERNATIONAL MANAGEMENT DISTRICT

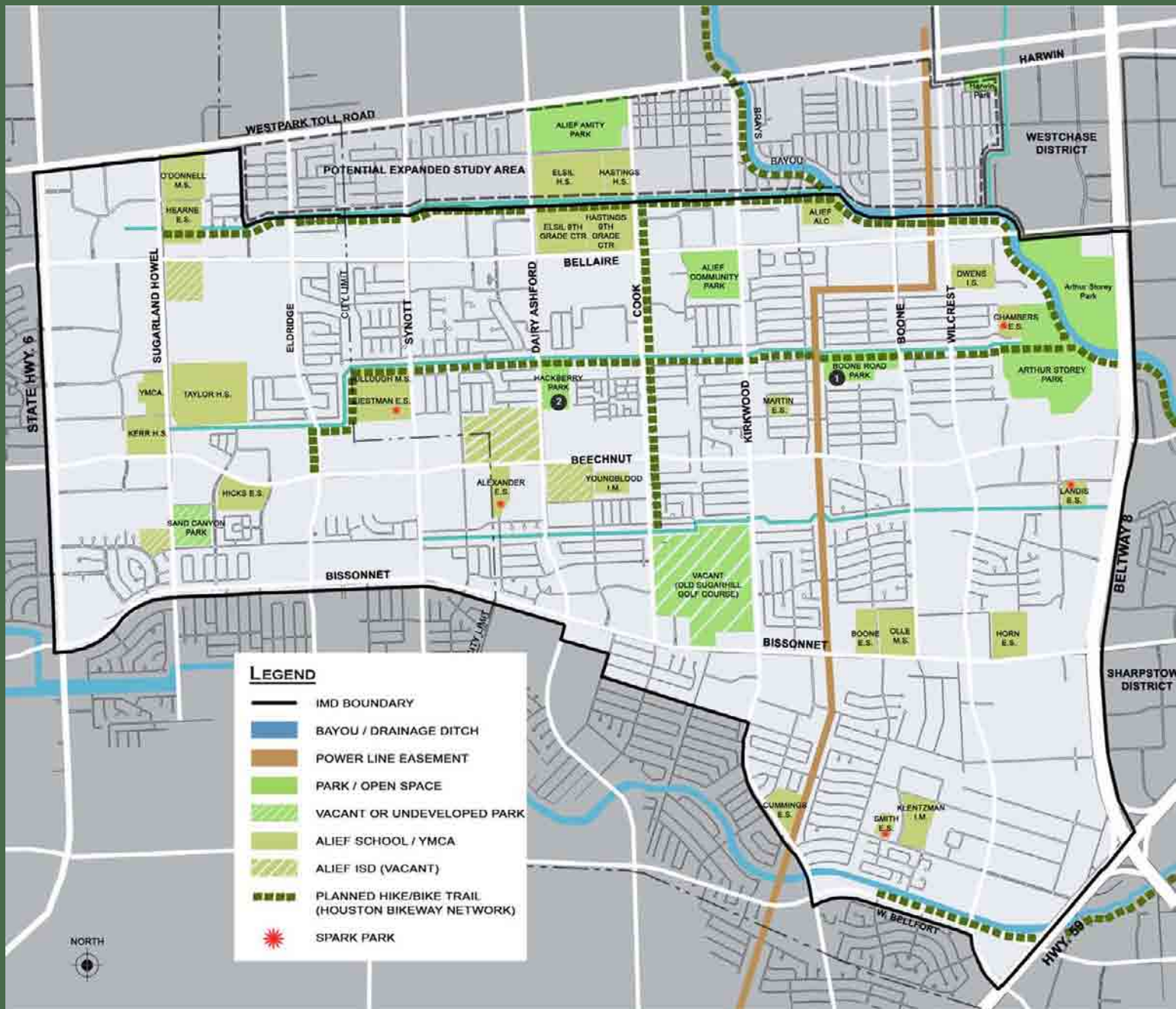


INVENTORY

AREAS OF INTEREST



INTERNATIONAL MANAGEMENT DISTRICT



INVENTORY

PARKS AND OPEN SPACE





## CORRIDORS

1. Bellaire Blvd.
2. Beechnut
3. Bissonnet
4. Wilcrest
5. Kirkwood
6. Dairy Ashford
7. Eldridge
8. Howell Sugarland
9. Synott
10. West Belfort



## ANALYSIS CRITERIA

### 1. Roadway Infrastructure:

- ❖ *Roadway Curbs and Surfaces*
- ❖ *Accessibility*
- ❖ *Utility Clutter*
- ❖ *Street Lights*

### 2. Pedestrian Amenities:

- ❖ *Sidewalks and Access Ramps*
- ❖ *Street Trees*
- ❖ *Street Furniture*
- ❖ *Transit Amenities*

### 3. Intersections:

- ❖ *Sidewalks and Access Ramps*
- ❖ *Traffic Signalization*
- ❖ *Roadway Curbs and Surfaces*

### 4. Analysis Rating System:

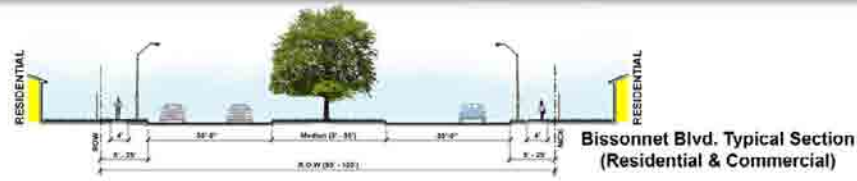
- ❖ *Little or No Improvements Needed*
- ❖ *Moderate Improvements Needed*
- ❖ *Maximum Improvements Needed*



### EXISTING CONDITIONS

- Moderate traffic, major thoroughfare
- Predominantly commercial, dense concentration near Beltway 8
- Large areas of inadequate pedestrians systems
- Intermittent or non-existent street trees and landscaping
- Parking areas are not screened from street
- Streetscape amenities are inadequate
- Significant utility clutter, lights on wood poles
- Partially served by METRO along corridor
- Corridor lacks consistent image or theme

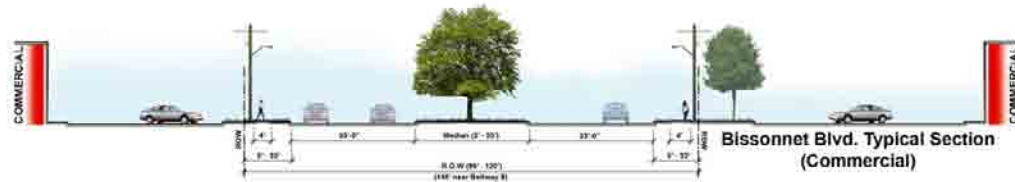
Land Class	
Single Family	Commercial
Multi-Family	Industrial
Vacant	Utility
Agric. Land (Qualified)	Open
	Exempt



**Bissonnet Blvd. Typical Section (Residential & Commercial)**

### OPPORTUNITIES

- Medians offer width for landscaping opportunity
- Landscape infill possible in back of curb conditions
- Themed wayfinding signage will improve Continuity
- Explore themed graphics on Center Point Poles
- Bus stop improvements to enhance pedestrian experience



**Bissonnet Blvd. Typical Section (Commercial)**

### CONSTRAINTS

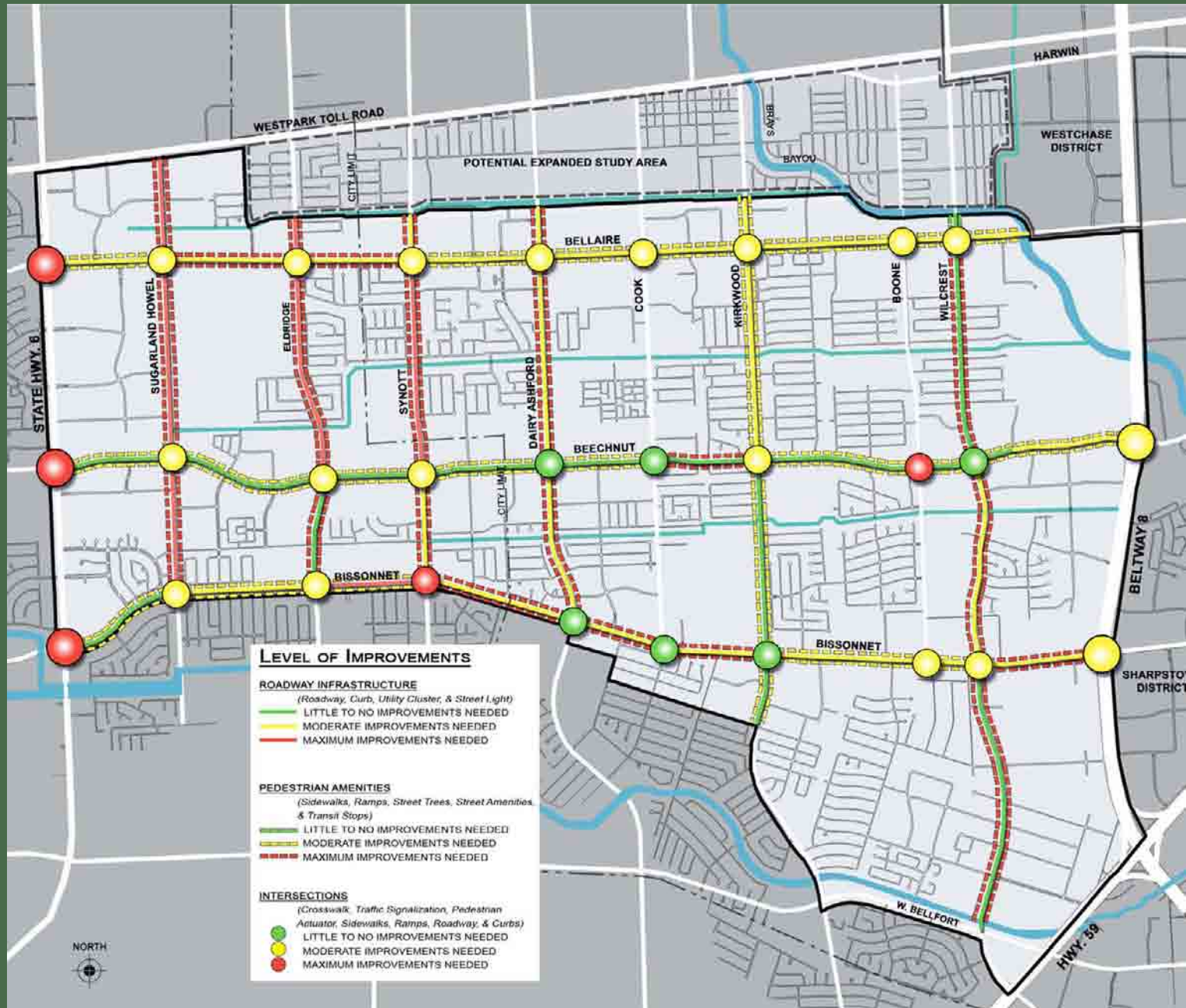
- Back of Curb ROW limited in some areas
- Utility Clutter, lights on wood poles
- Lack of pedestrian mobility in large areas of corridor
- Landscape improvements will require maintenance





BISSONNET			BISSONNET		
	RANKING	COMMENTS		RANKING	COMMENTS
<b>Beltway 8 to Wilcrest</b>			<b>Kirkwood to Cook</b>		
Predominate Land Use		Commercial	Predominate Land Use		Commercial
Available Right-of-way		From 5' wide to 32' wide	Available Right-of-way		From 5' - 25' Wide
Median and Width		Widest point - 30'	Median and Width		Widest point - 30'
<b>Infrastructure</b>			<b>Infrastructure</b>		
1 Roadway / Curb	0		1 Roadway / Curb	1	
2 Overhead Utility Clutter	2	Wood poles at south side of Wilcrest	2 Overhead Utility Clutter	2	Wood poles
3 Street Lighting	1	Wood poles	3 Street Lighting	1	Wood poles
<b>Total</b>	<b>3</b>		<b>Total</b>	<b>4</b>	
<b>Pedestrian Amenities</b>			<b>Pedestrian Amenities</b>		
4 Sidewalks / Ramps	1		4 Sidewalks / Ramps	1	
5 Street Trees	2		5 Street Trees	2	
6 Street Amenities			6 Street Amenities		
a) Seating	2		a) Seating	2	
b) Trash Receptacle	2		b) Trash Receptacle	2	
7 Transit Stops	2	Two bus stops w/ no shelter / seating	7 Transit Stops	2	Bus stop @ corner of Cook - no shelter / seating
<b>Total</b>	<b>3</b>		<b>Total</b>	<b>3</b>	
<b>Wilcrest to Boone</b>			<b>Cook to Dairy Ashford</b>		
Predominate Land Use		Commercial	Predominate Land Use		Commercial
Available Right-of-way		From 5' - 15' wide	Available Right-of-way		
Median and Width		Widest point - 32'	Median and Width		
<b>Infrastructure</b>			<b>Infrastructure</b>		
1 Roadway / Curb	1		1 Roadway / Curb	1	
2 Overhead Utility Clutter	2	Wood poles	2 Overhead Utility Clutter	2	Wood poles
3 Street Lighting	1	Wood poles	3 Street Lighting	0	Wood poles
<b>Total</b>	<b>4</b>		<b>Total</b>	<b>3</b>	
<b>Pedestrian Amenities</b>			<b>Pedestrian Amenities</b>		
4 Sidewalks / Ramps	1		4 Sidewalks / Ramps	1	
5 Street Trees	2		5 Street Trees	1	
6 Street Amenities			6 Street Amenities		
a) Seating	2		a) Seating	2	
b) Trash Receptacle	2		b) Trash Receptacle	2	
7 Transit Stops	0		7 Transit Stops	2	Two bus stops (one shelter / seating)
<b>Total</b>	<b>7</b>		<b>Total</b>	<b>4</b>	
<b>Boone to Kirkwood</b>			<b>Dairy Ashford to Synott</b>		
Predominate Land Use		Commercial	Predominate Land Use		Commercial / Residential
Available Right-of-way		From 10' - 25' wide	Available Right-of-way		From 5' - 20' wide
Median and Width		Widest point - 30'	Median and Width		Widest point - 30'
<b>Infrastructure</b>			<b>Infrastructure</b>		
1 Roadway / Curb	1		1 Roadway / Curb	1	
2 Overhead Utility Clutter	2	Wood poles	2 Overhead Utility Clutter	2	Wood poles
3 Street Lighting	1	Wood poles	3 Street Lighting	2	Wood light poles stop at Backford
<b>Total</b>	<b>4</b>		<b>Total</b>	<b>5</b>	
<b>Pedestrian Amenities</b>			<b>Pedestrian Amenities</b>		
4 Sidewalks / Ramps	1		4 Sidewalks / Ramps	2	No sidewalk from Old Richmond to HWY 6
5 Street Trees	2		5 Street Trees	2	
6 Street Amenities			6 Street Amenities		
a) Seating	1		a) Seating	2	
b) Trash Receptacle	1		b) Trash Receptacle	2	
7 Transit Stops	1		7 Transit Stops	2	Bus stop (no shelter / seating)
<b>Total</b>	<b>6</b>		<b>Total</b>	<b>10</b>	







The process of getting from place to place  
is called **Wayfinding**





Facility/Place Signage



Street Signage



Landscape



Street Furniture



Special paving



Transportation



Lighting



Special landmarks



Architecture



Activity/Spaces



INTERNATIONAL MANAGEMENT DISTRICT



The way in which a place evokes  
a special or unique emotional attachment,  
or sense of belonging,

## **Sense of Place**



## One Important Wayfinding Element: **SIGNAGE**



**TASK:** Develop An Environmental Graphic Identity Program

- THAT:
- *Celebrates the unique character of the District*
  - *Reinforces it's boundaries*
  - *Improve awareness of important destinations*
  - *Improve the Streetscape Character*
  - *Perception of a clean, safe, welcoming environment*
  - *Is cost effective and easily implementable*
  - *Reinforces a 'Sense of Place'*



Light Pole Cladding

Interior Marker

District Edge ID

Interior Monument

Street Sign

Facility and Directional

Proposed Improvements

WAYFINDING SIGNAGE





# Logo Competition Winner



INTERNATIONAL MANAGEMENT DISTRICT

LOGO AND BRANDING



Next :  
Applying The Design Vision  
For  
The District and it's Corridors



## ADDITIONAL PROPOSED CONCEPTS

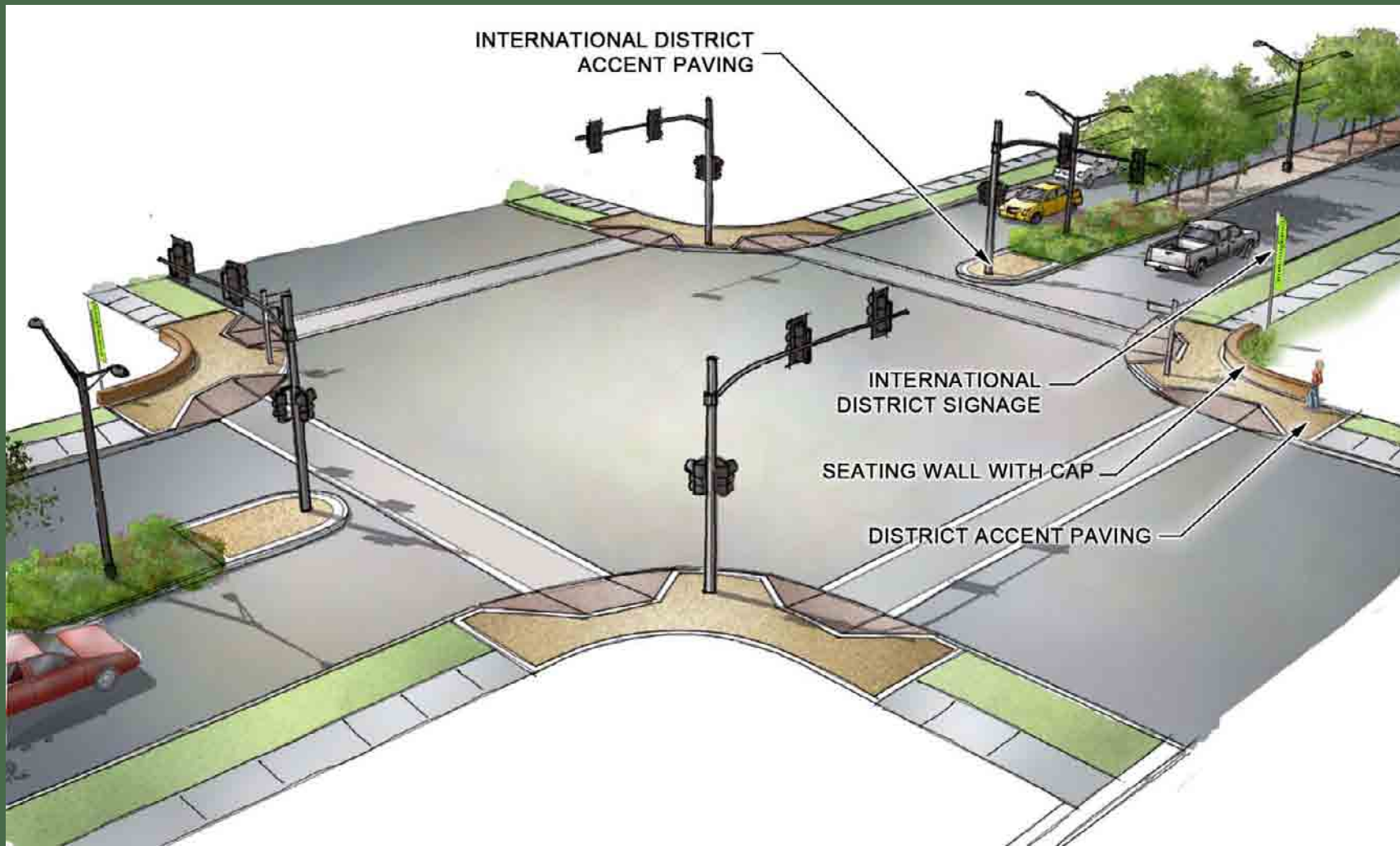
1. Wayfinding Signage
2. Intersection Enhancements
3. Pedestrian Mobility
4. Hike and Bike Trail
5. Street Landscaping
6. Bridge Enhancements
7. Freeway Enhancements
8. Parks and Open Space
9. Transit Stop Improvements





Proposed Improvements

INTERSECTIONS



Proposed Improvements

INTERSECTIONS





INTERNATIONAL MANAGEMENT DISTRICT



Proposed Improvements

PEDESTRIAN MOBILITY





INTERNATIONAL MANAGEMENT DISTRICT

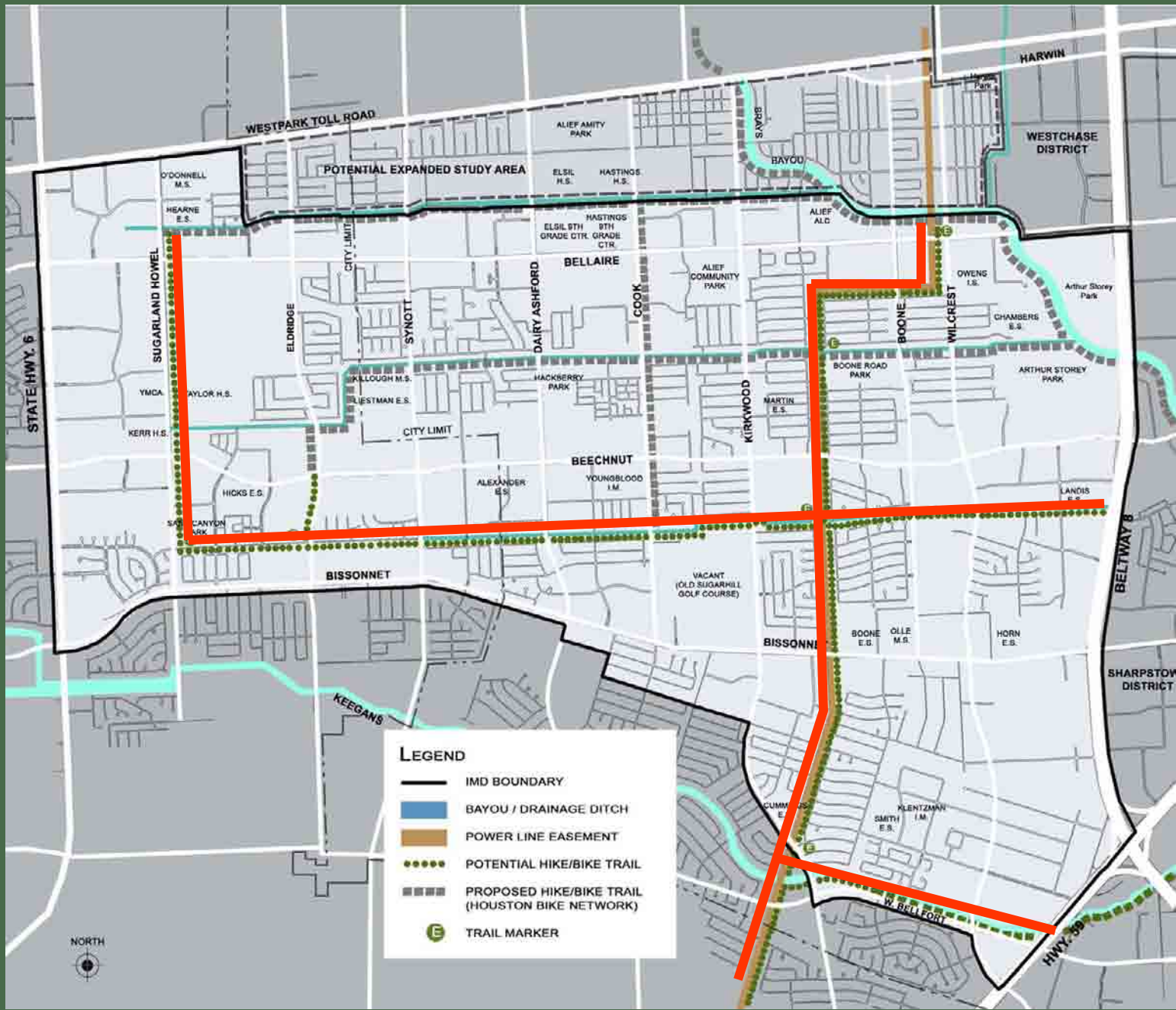


Proposed Improvements

PEDESTRIAN MOBILITY



INTERNATIONAL MANAGEMENT DISTRICT



Proposed Improvements

HIKE AND BIKE





INTERNATIONAL MANAGEMENT DISTRICT

**Proposed Improvements**

**HIKE AND BIKE**





Proposed Improvements

HIKE AND BIKE



INTERNATIONAL MANAGEMENT DISTRICT

Proposed Improvements

LANDSCAPING





Proposed Improvements

LANDSCAPING



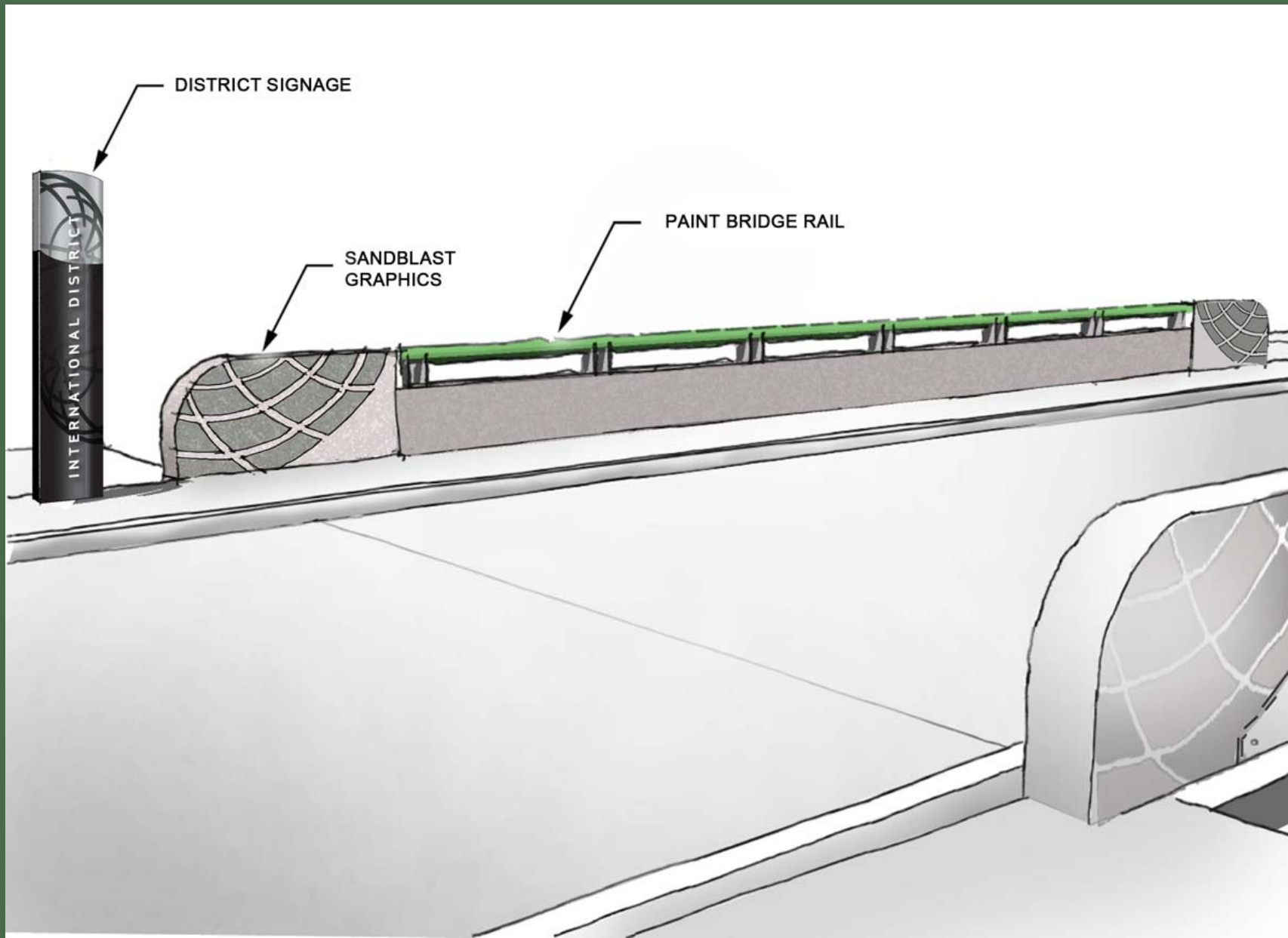
INTERNATIONAL MANAGEMENT DISTRICT



Proposed Improvements

BRIDGE TREATMENT





INTERNATIONAL MANAGEMENT DISTRICT

Proposed Improvements

BRIDGE TREATMENT



INTERNATIONAL MANAGEMENT DISTRICT



Proposed Improvements

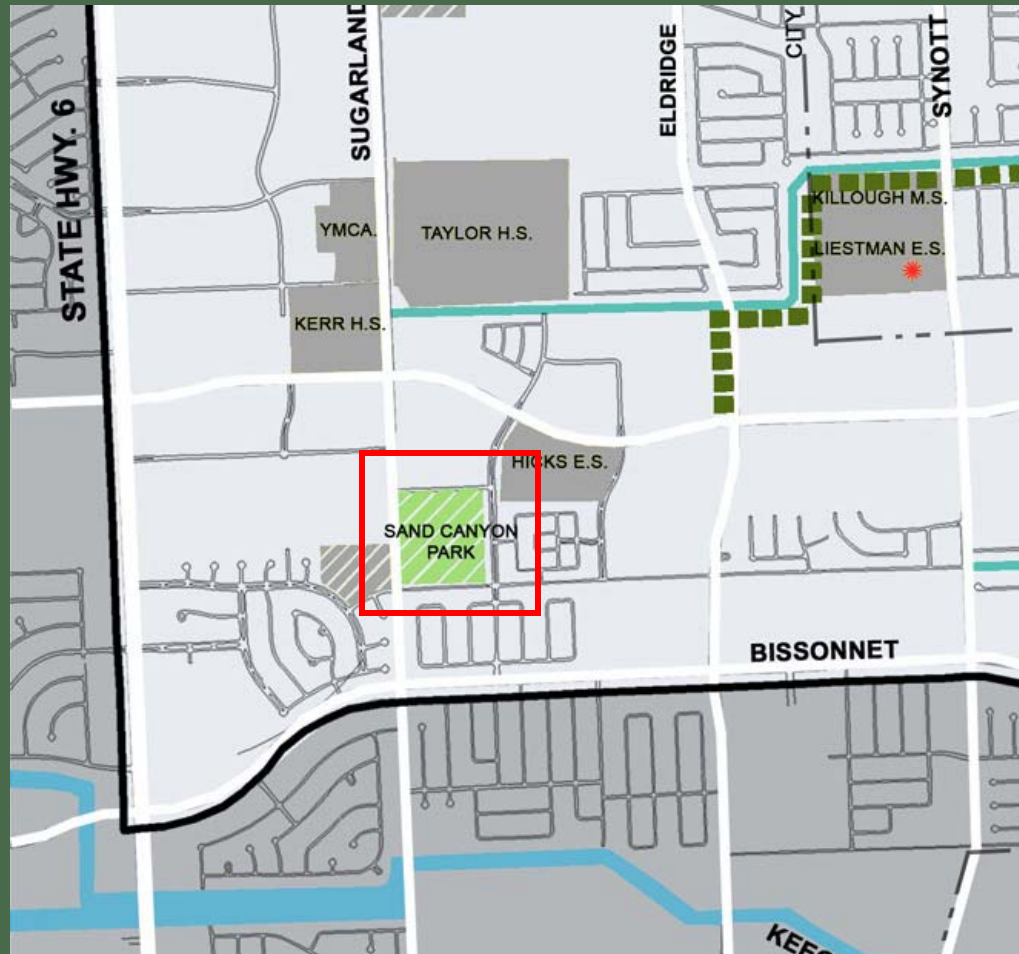
**FREEWAY ENHANCEMENTS**





Proposed Improvements

**FREEWAY ENHANCEMENTS**



INTERNATIONAL MANAGEMENT DISTRICT

Proposed Improvements

PARKS AND OPEN SPACE





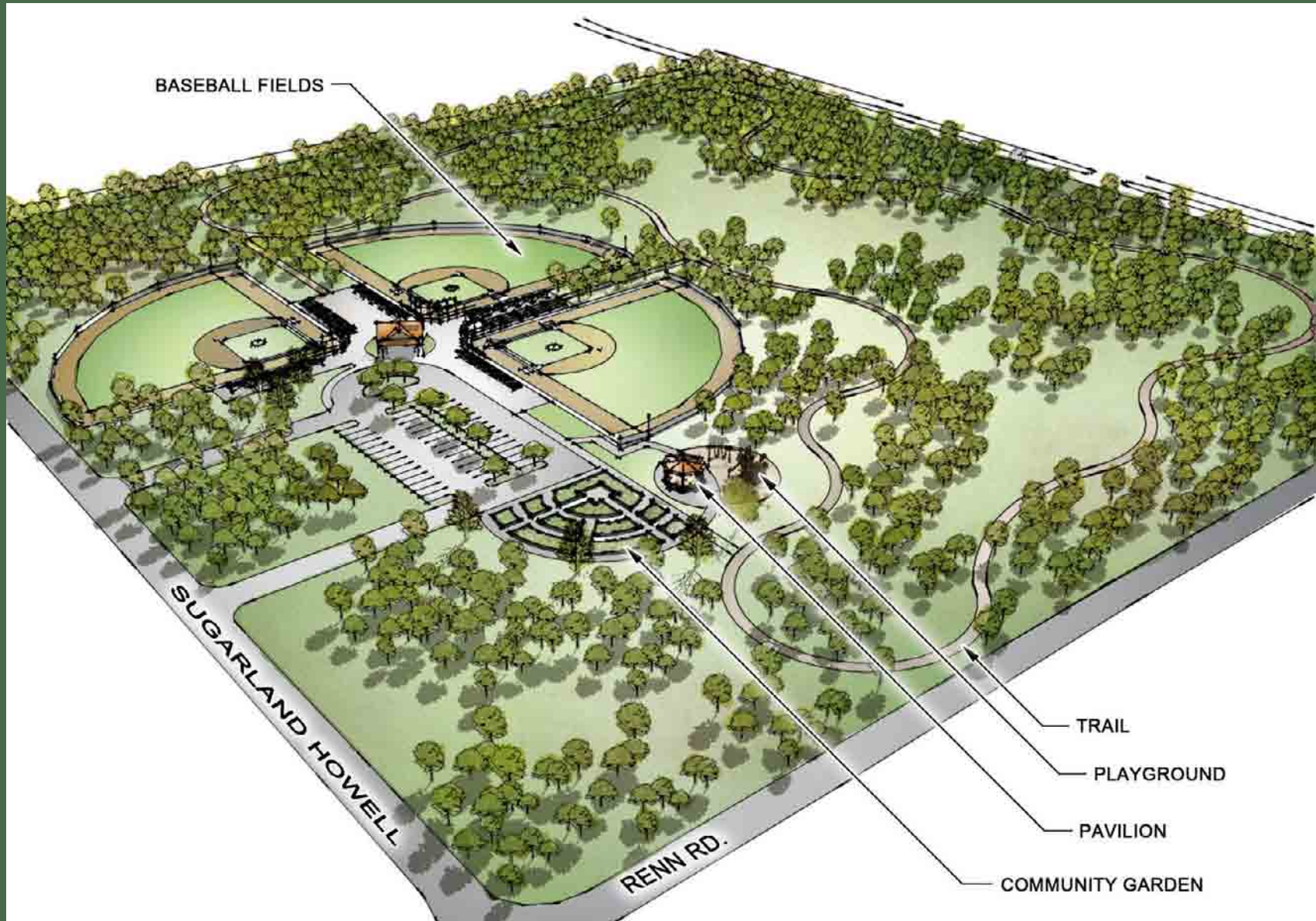
INTERNATIONAL MANAGEMENT DISTRICT



**Proposed Improvements**

**PARKS AND OPEN SPACE**





BASEBALL FIELDS

SUGARLAND HOWELL

RENN RD.

TRAIL

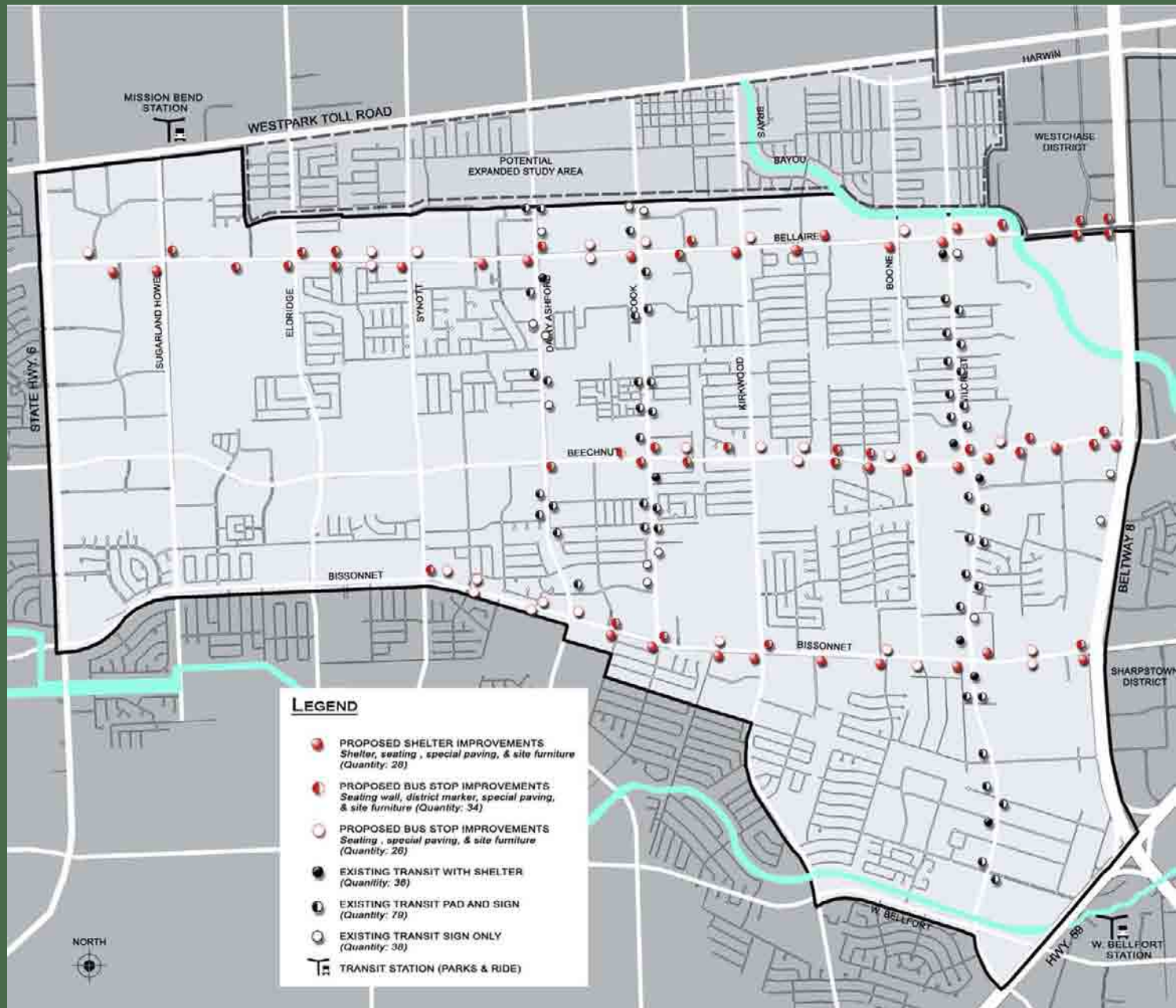
PLAYGROUND

PAVILION

COMMUNITY GARDEN

Proposed Improvements

PARKS AND OPEN SPACE







INTERNATIONAL MANAGEMENT DISTRICT



Proposed Improvements



# Proposed Improvements



**TRANSIT WITH PAD AND S**



**TRANSIT WITH SIGN ONLY**

## Proposed Improvements





INTERNATIONAL MANAGEMENT DISTRICT



Proposed Improvements



INTERNATIONAL MANAGEMENT DISTRICT



Proposed Improvements

City of Houston, Texas Resolution No. 2015-1

**A RESOLUTION APPROVING AND AUTHORIZING THE NOMINATION AND SUBMISSION OF THE INTERNATIONAL MANAGEMENT DISTRICT BIKEWAYS PROJECT FOR FUNDING CONSIDERATION IN THE 2015 TRANSPORTATION IMPROVEMENT PROGRAM CALL FOR PROJECTS ADMINISTERED BY THE HOUSTON-GALVESTON AREA COUNCIL; AND MAKING VARIOUS FINDINGS AND PROVISIONS RELATING TO THE SUBJECT.**

\* \* \* \*

**WHEREAS**, the City Council of the City of Houston (the “City Council”) approved Ordinance 2011-944 authorizing an interlocal agreement between the City of Houston (“City”) and the International Management District (“IMD”) where IMD agreed to provide the 20% local match required under an advanced funding agreement for the International Management District Bikeways Project (“Project”) under the 2009 Transportation Enhancement Program administered by the Texas Department of Transportation (“TxDOT”);

**WHEREAS**, the City Council approved Ordinance 2011-1005 authorizing the aforementioned advanced funding agreement between the City and TxDOT for the Project; and

**WHEREAS**, the City Council approved Ordinance 2014-87 authorizing a first amendment to the interlocal agreement between the City and IMD where the City agreed to share the cost of the local match required under the advanced funding agreement by providing \$200,000.00; and

**WHEREAS**, on June 9, 2014, TxDOT notified the City that the federal funding for the Project will be withdrawn due to delays in project implementation; and

**WHEREAS**, the Transportation Improvement Program Call for Projects is a regional competitive process administered by the Houston-Galveston Area Council (“H-GAC”), through which the City of Houston may receive federal and state funding for certain bicycle/pedestrian transportation improvements; and

**WHEREAS**, the City Council recommends the Project listed in this Resolution as worthy of federal and state investment because the Project will: (1) create an alternate mode of transportation; (2) improve mobility and access for existing and future transit riders, local residents, and commuters; and (3) demonstrates a relationship to the surface transportation system and qualifies under the category for provision of facilities for pedestrians and bicycles of the Transportation Improvement Program; and

**WHEREAS**, funding of this Project will: (1) replace the lost funding awarded under the 2009 Transportation Enhancement Program; (2) maximize existing localized efforts; and (3) provide benefits for the City of Houston and surrounding region; and



**WHEREAS**, to the extent allowed by law, the City and IMD commits to providing or facilitating the provision of the 20% required local match for the Project if selected for funding by the H-GAC Transportation Policy Council and to be responsible for 100% of all cost overruns above the authorized federal and state funds on the Project; and

**WHEREAS**, the Houston Parks and Recreation Department is sponsoring the nomination of the International Management District Bikeways Project which will be subject to City Council approval in subsequent actions; and

**WHEREAS**, appropriation of funds for the City-nominated project is subject to City Council approval in subsequent ordinances;

**NOW THEREFORE,**

\* \* \* \*

**BE IT RESOLVED BY THE CITY COUNCIL OF THE CITY OF HOUSTON, TEXAS:**

Section 1. The findings contained in the preamble of this Resolution are determined to be true and correct and are adopted as a part of this Resolution.

Section 2. The City Council hereby nominates the International Management District Bikeways Project for funding consideration in the 2015 Transportation Improvement Program call for projects administered by the Houston-Galveston Area Council.


Section 3. That this Resolution shall take effect immediately upon its passage and approval by the Mayor; however, in the event that the Mayor fails to sign this Resolution within five days after its passage and adoption, it shall take effect in accordance with Article VI, Section 6, Houston City Charter.


PASSED AND ADOPTED this 7<sup>th</sup> day of January, 2015.

APPROVED this \_\_\_\_\_ day of \_\_\_\_\_, 20\_\_\_\_.

\_\_\_\_\_  
Mayor of the City of Houston, Texas

Pursuant to Article VI, Section 6, Houston City Charter, the effective date of the foregoing Resolution is JAN 13 2014.

  
 \_\_\_\_\_  
 City Secretary

(Prepared by Legal Dept.   
 (LAC 1/5/2015) Assistant City Attorney  
 (Requested by Joe Turner, Director, Houston Parks and Recreation Department)  
 (L.D. File No. 049-1400110-001)

AYE	NO	
✓		<b>MAYOR PARKER</b>
••••	••••	<b>COUNCIL MEMBERS</b>
✓		STARDIG
✓		DAVIS
✓		COHEN
✓		BOYKINS
✓		MARTIN
✓		NGUYEN
✓		PENNINGTON
	ABSENT-OUT OF CITY CITY BUSINESS	GONZALEZ
✓		GALLEGOS
✓		LASTER
✓		GREEN
✓		COSTELLO
✓		ROBINSON
✓		KUBOSH
✓		BRADFORD
✓		CHRISTIE
CAPTION	ADOPTED	