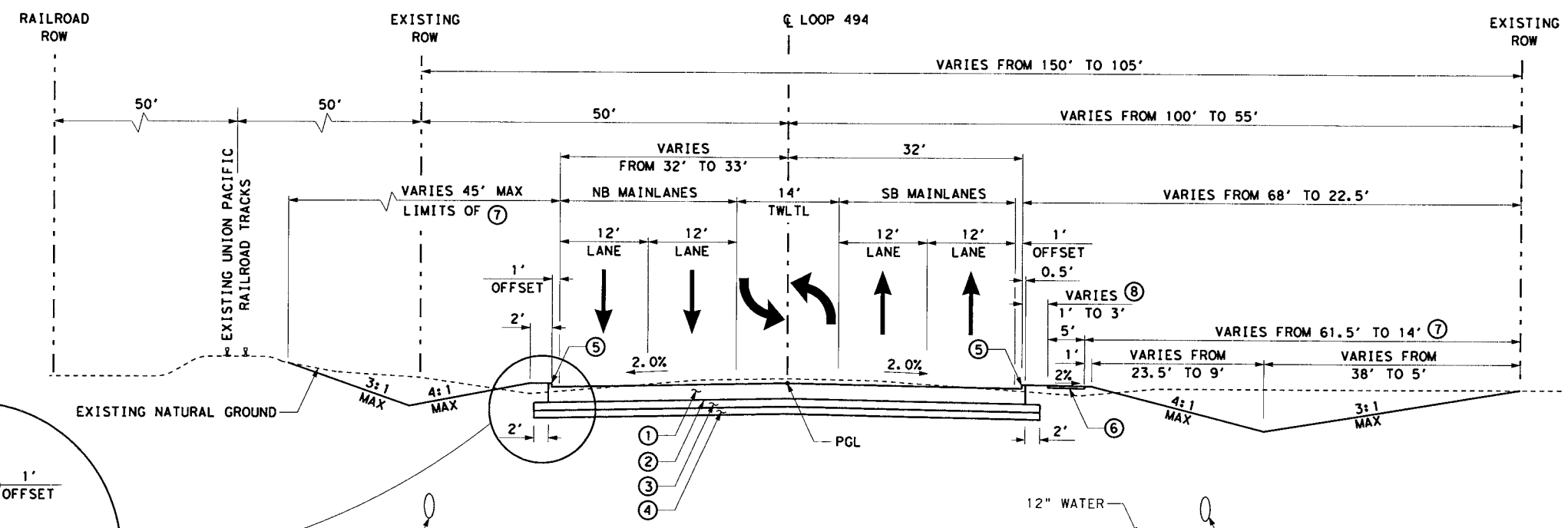
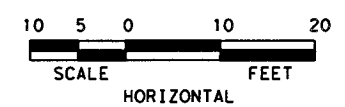
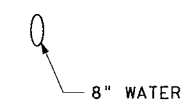


- LEGEND**
- ① CONCRETE PVMT (CONT-REINF-CRCP) (12")
  - ② 1" ASPHALT STAB BASE (GR 4) (PG5B)
  - ③ 6" CEMENT TREATED BASE
  - ④ 6" CEMENT TREATED SUBGRADE
  - ⑤ 6" CURB (TY 1)
  - ⑥ 4" CONC SIDEWALK
  - ⑦ BLOCK SODDING
  - ⑧ LANDSCAPE PAVER
  - ⑨ CURB RAMP (TY 7)
  - ⑩ 15" CONC FAST TRACK
  - ⊗ TYPICAL SECTION NUMBER
  - ◇ DRIVEWAY SUMMARY
  - Ⓒ CURVE HORIZONTAL CURVE NUMBER
  - ← DIRECTION OF TRAFFIC

- NOTES:**
- FOR THIS SECTION, PAY ADJUSTMENT SCHEDULE FOR RIDE QUALITY IS BASED ON SCHEDULE 2 AND SURFACE TEST TYPE B.
  - ALL STATIONS ARE TO LOOP 494  $\bar{C}$  UNLESS OTHERWISE NOTED.

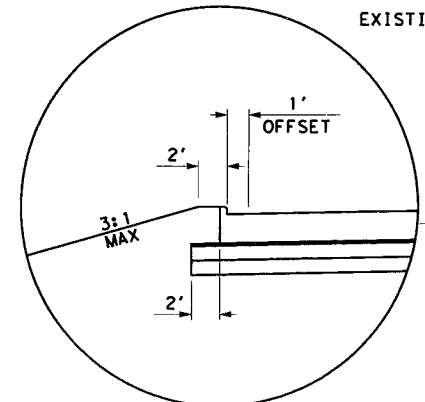
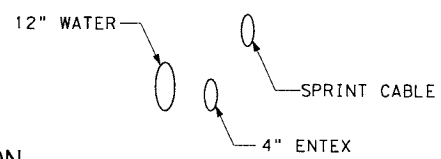
PROPOSED LOOP 494 TYPICAL SECTION  
STA 888+45.57 TO STA 891+60.51

②



PROPOSED LOOP 494 TYPICAL SECTION  
STA 853+25.79 TO STA 888+45.57

①



DETAIL  
N. T. S.

90% SUBMITTAL

DOCUMENT INCOMPLETE: Not intended for permit, bidding, or construction.

Engineer: RICARDO J. VILLAGRAND

P.E. Serial No: 90339

Date: DECEMBER 11, 2006

DATE	BY	REV	REVISION

©2006 Texas Department of Transportation

**f.g.miller engineers** since 1966

12121 wickchester suite 200 houston, texas 77079 (713) 461-9600

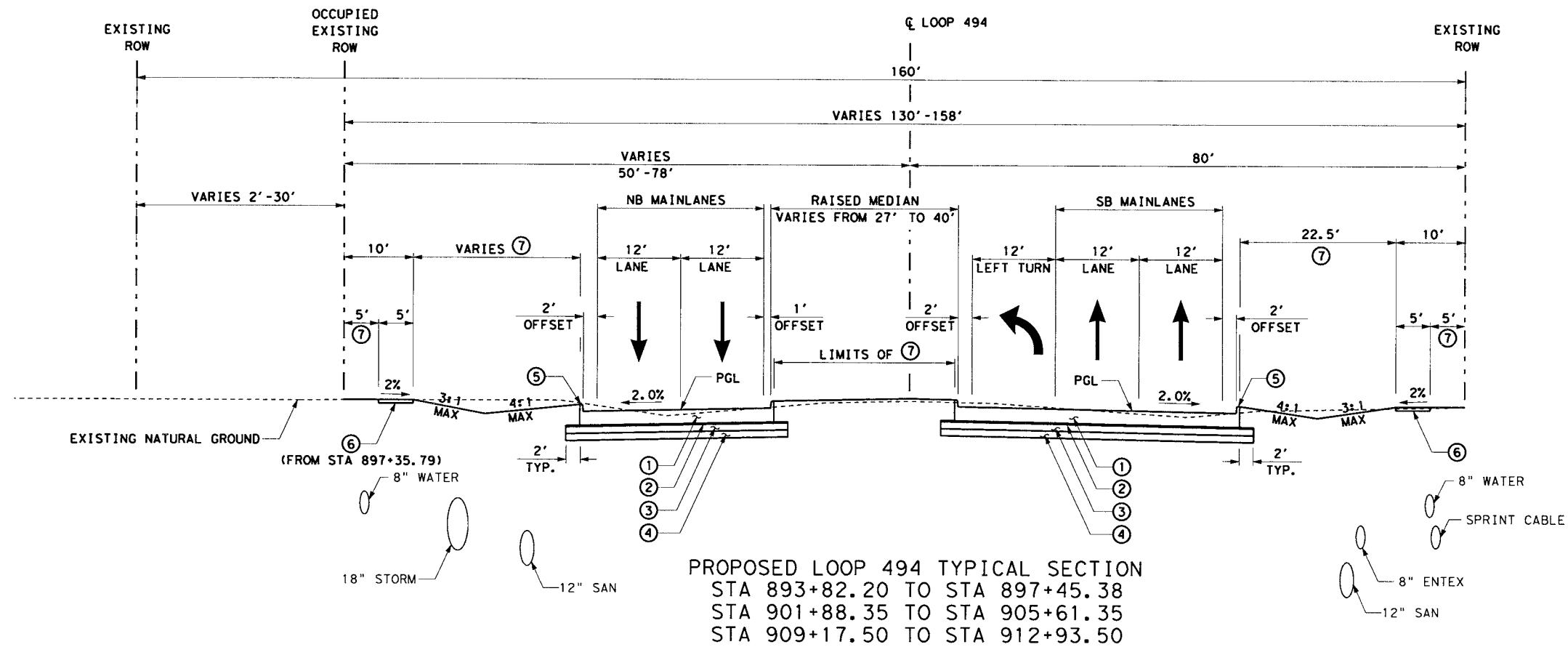
LOOP 494  
Exhibit 4  
PROPOSED  
TYPICAL SECTIONS

SHEET 1 OF 5

FED. RD. DIV. NO.	PROJECT NO.	SHEET NO.
6		9
DES.: RJV	STATE	DIST. COUNTY
CHK.: RJV	TEXAS	HOU MONTGOMERY, ETC.
DWN.: TP	CONT.	SECT. JOB HIGHWAY NO.
CHK.: JRG	0177-14-010, ETC.	LOOP 494

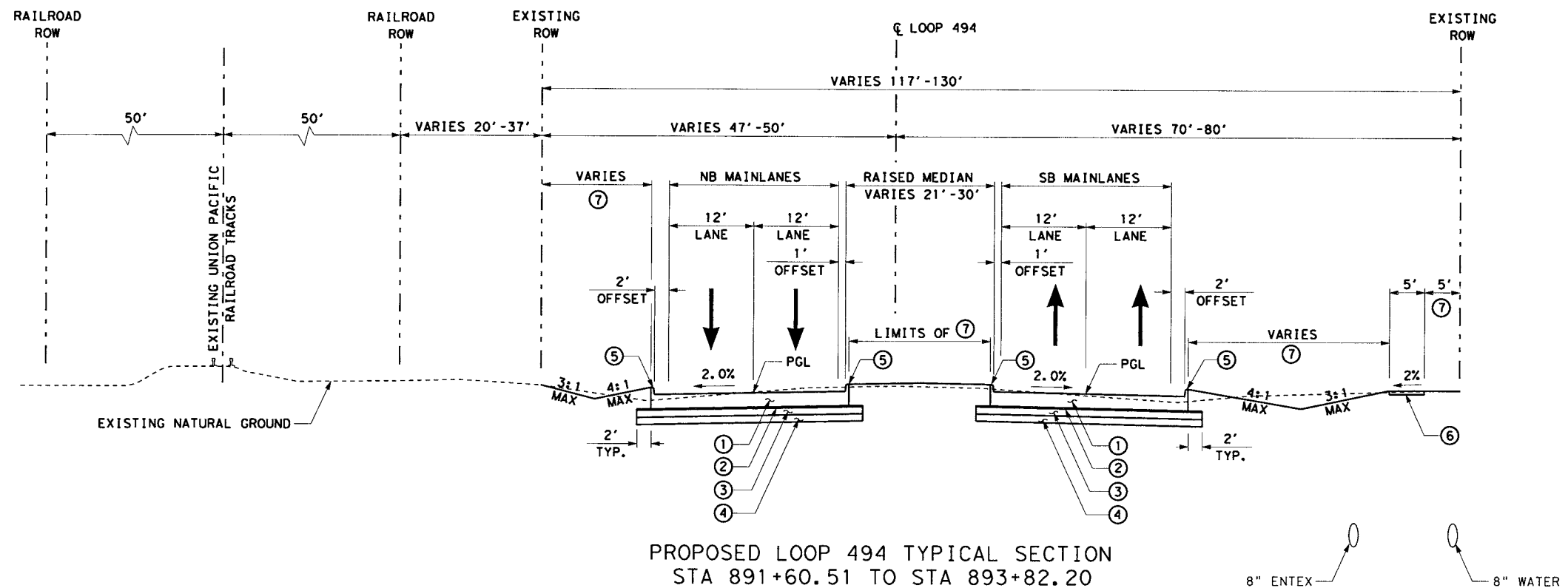
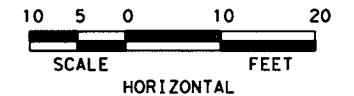
2:39:38 PM 11/16/2006 p:\transportat\ion\txdot\houston\evergreen\loop494\2910\dgn\rgme\494typ05.dgn

p:\transportat\ion\txdot\houston\evergreen\loop494\2910\dgn\rgme\494typ05.dgn



- LEGEND**
- ① CONCRETE PVMT (CONT-REINF-CRCP) (12")
  - ② 1" ASPHALT STAB BASE (GR 4) (PG58)
  - ③ 6" CEMENT TREATED BASE
  - ④ 6" CEMENT TREATED SUBGRADE
  - ⑤ 6" CURB (TY 1)
  - ⑥ 4" CONC SIDEWALK
  - ⑦ BLOCK SODDING
  - ⑧ LANDSCAPE PAVER
  - ⑨ CURB RAMP (TY 7)
  - ⑩ 15" CONC FAST TRACK
  - (X) TYPICAL SECTION NUMBER
  - ◇ DRIVEWAY SUMMARY
  - (C) CURVE HORIZONTAL CURVE NUMBER
  - ← DIRECTION OF TRAFFIC

- NOTES:**
- FOR THIS SECTION, PAY ADJUSTMENT SCHEDULE FOR RIDE QUALITY IS BASED ON SCHEDULE 2 AND SURFACE TEST TYPE B.
  - ALL STATIONS ARE TO LOOP 494 C UNLESS OTHERWISE NOTED.



90% SUBMITTAL

DOCUMENT INCOMPLETE: Not intended for permit, bidding, or construction.  
 Engineer: RICARDO J. VILLAGRAND  
 P.E. Serial No: 90339  
 Date: DECEMBER 11, 2006

DATE	BY	REV	REVISION

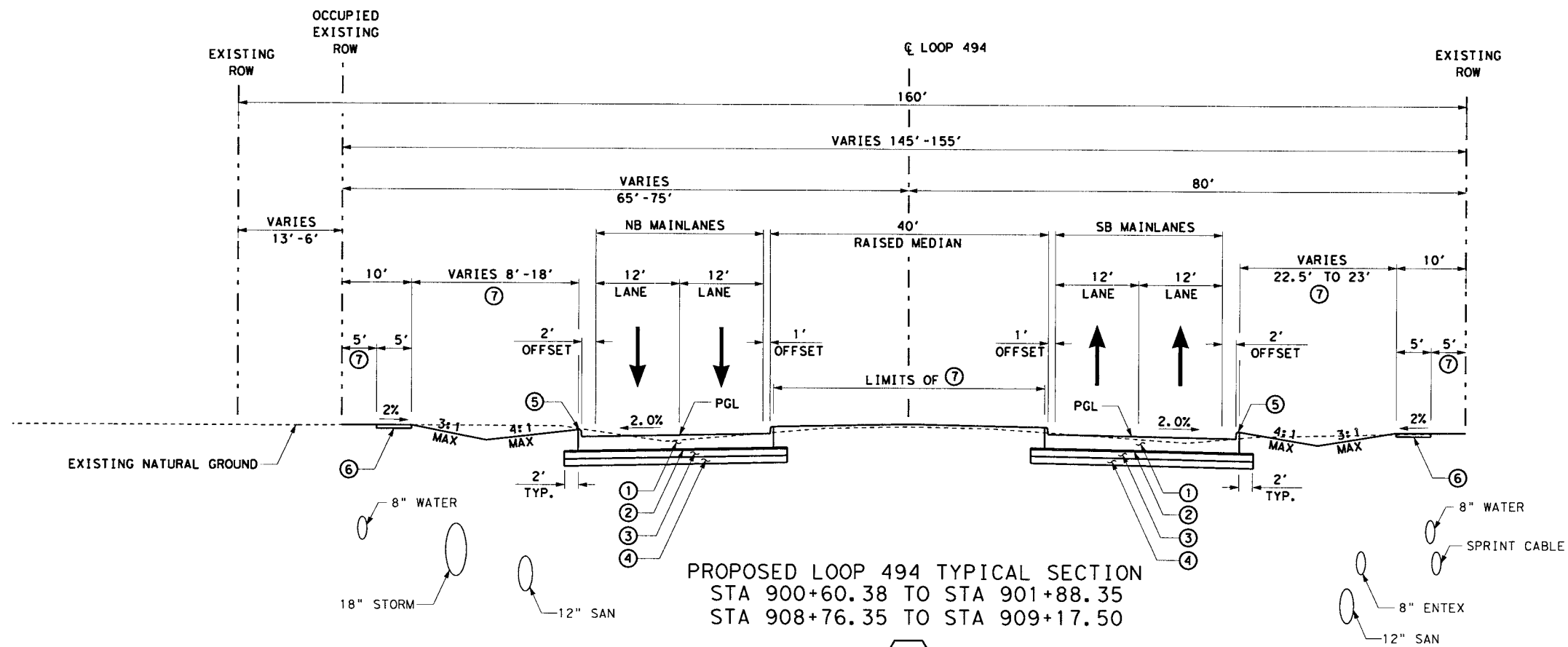
©2006 Texas Department of Transportation

**LOOP 494**  
**Exhibit 4**  
**PROPOSED**  
**TYPICAL SECTIONS**

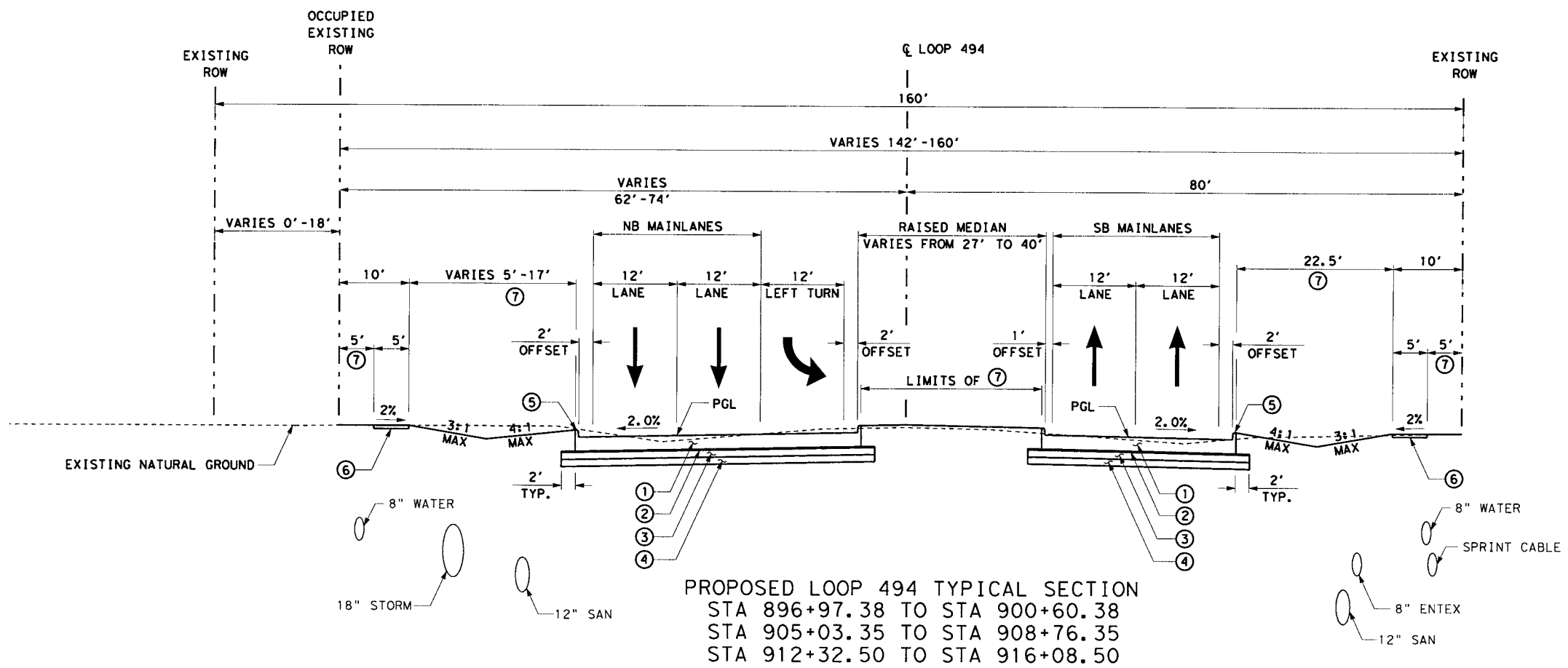
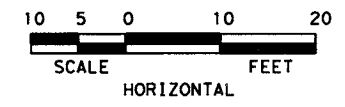
SHEET 2 OF 5

FED. RD. DIV. NO. 6	PROJECT NO.	SHEET NO. 10
DES.: RJV	STATE	DIST. COUNTY
CHK.: RJV	TEXAS	HOU MONTGOMERY, ETC.
DWN.: TP	CONT. SECT.	JOB HIGHWAY NO.
CHK.: JRG	0177-14-010, ETC.	LOOP 494

- LEGEND**
- ① CONCRETE PVMT (CONT-REINF-CRCP) (12")
  - ② 1" ASPHALT STAB BASE (GR 4) (PG58)
  - ③ 6" CEMENT TREATED BASE
  - ④ 6" CEMENT TREATED SUBGRADE
  - ⑤ 6" CURB (TY 1)
  - ⑥ 4" CONC SIDEWALK
  - ⑦ BLOCK SODDING
  - ⑧ LANDSCAPE PAVER
  - ⑨ CURB RAMP (TY 7)
  - ⑩ 15" CONC FAST TRACK
  - ⊗ TYPICAL SECTION NUMBER
  - ◇ DRIVEWAY SUMMARY
  - (CURVE) HORIZONTAL CURVE NUMBER
  - ← DIRECTION OF TRAFFIC
- NOTES:**
- FOR THIS SECTION, PAY ADJUSTMENT SCHEDULE FOR RIDE QUALITY IS BASED ON SCHEDULE 2 AND SURFACE TEST TYPE B.
  - ALL STATIONS ARE TO LOOP 494 & UNLESS OTHERWISE NOTED.



⑥



⑤

90% SUBMITTAL

DOCUMENT INCOMPLETE: Not intended for permit, bidding, or construction.  
 Engineer: RICARDO J. VILLAGRAND  
 P.E. Serial No: 90339  
 Date: DECEMBER 11, 2006

DATE	BY	REV	REVISION

Texas Department of Transportation

**r.g.miller** engineers  
 since 1966

12121 wickchester  
 suite 200  
 houston, texas 77079  
 (713) 461-9600

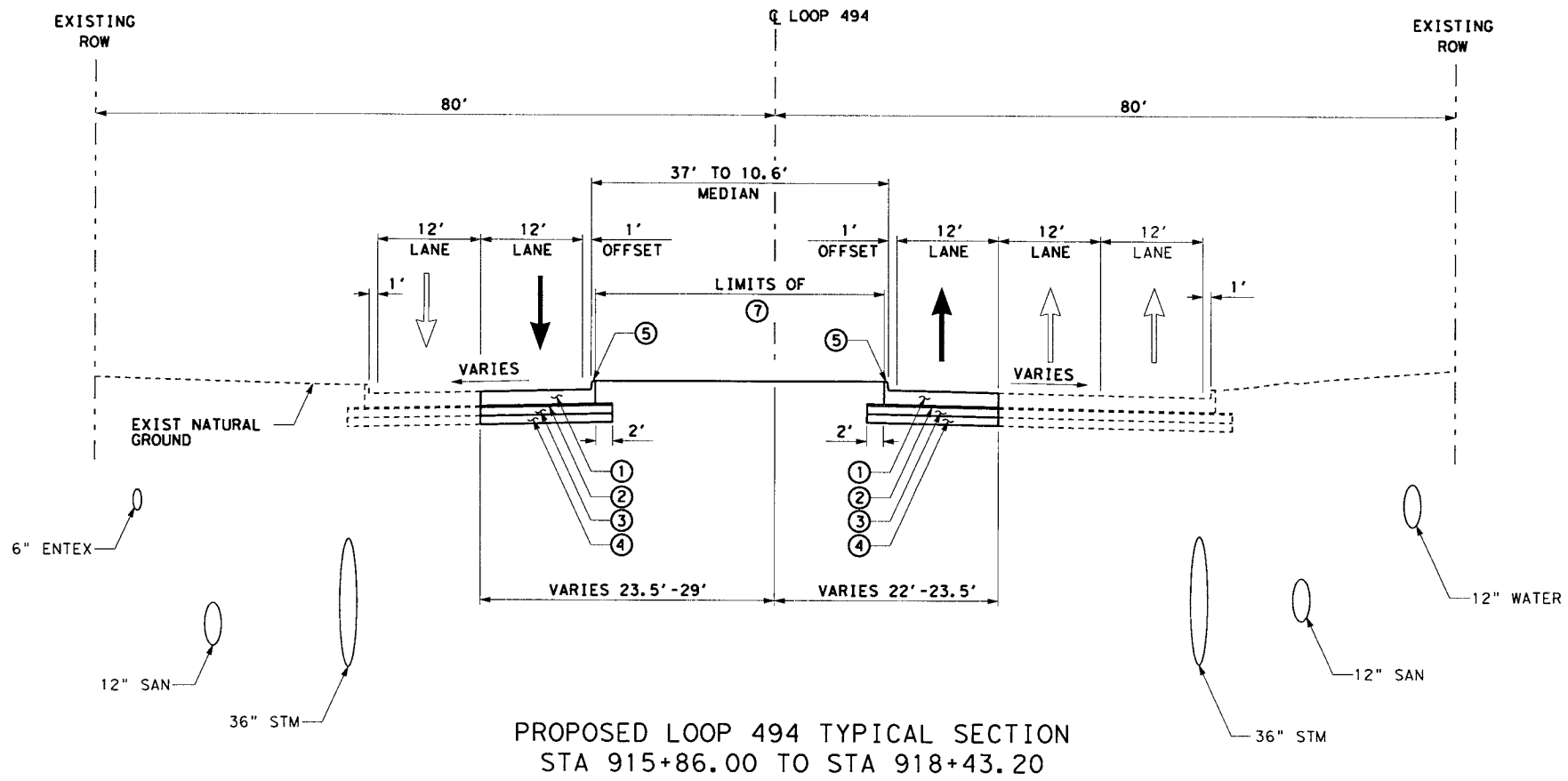
**LOOP 494**  
**Exhibit 4**  
**PROPOSED**  
**TYPICAL SECTIONS**

SHEET 3 OF 5

FED. RD. DIV. NO.	PROJECT NO.	SHEET NO.
6		11
DES.: RJV	STATE	DIST. COUNTY
CHK.: RJV	TEXAS	HOU MONTGOMERY, ETC.
OWN.: TP	CONT. SECT. JOB	HIGHWAY NO.
CHK.: JRG	0177-14-010, ETC.	LOOP 494

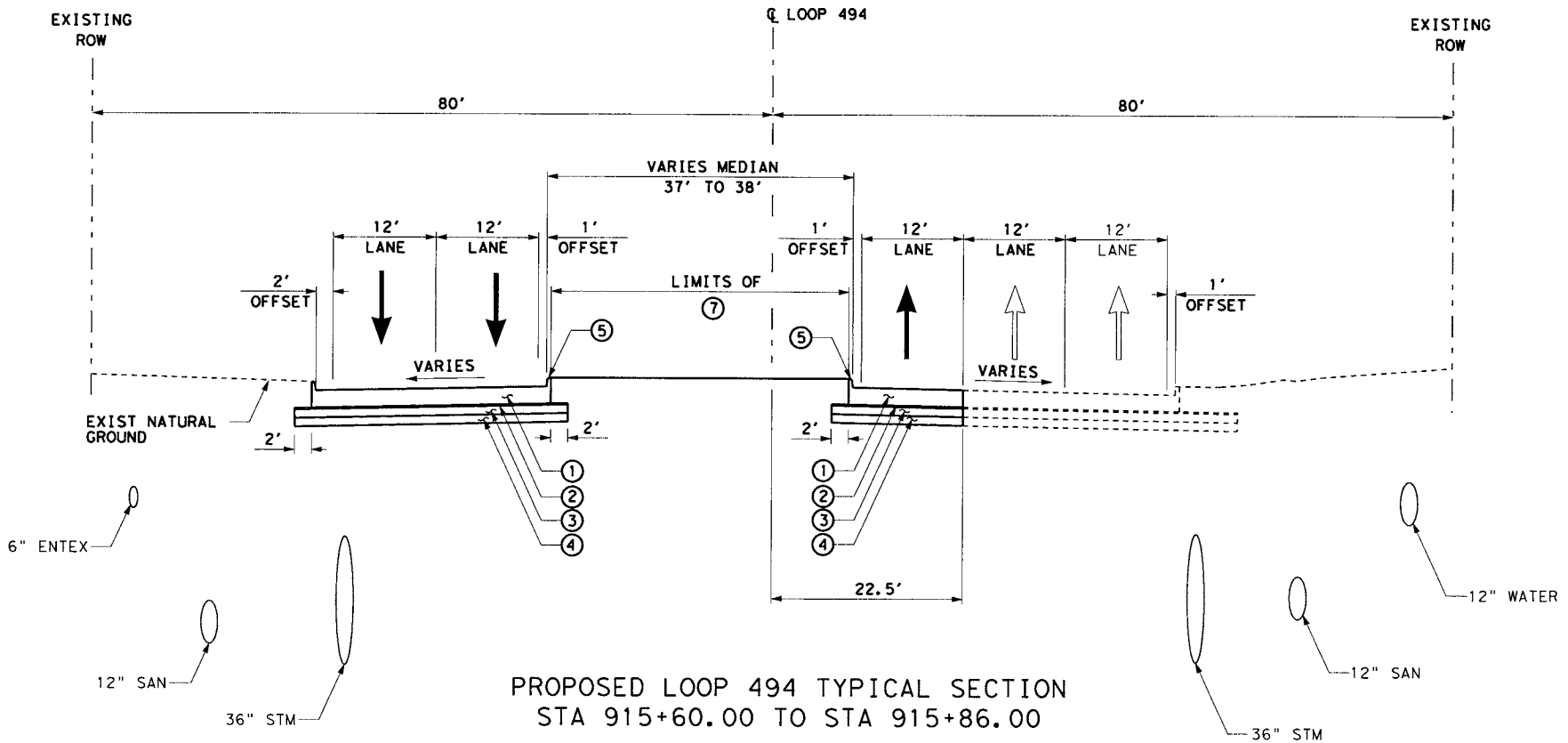
2:39:41 PM  
 11/16/2006  
 p:\transportation\houston\evergreen\loop494\2910\dgn\rgme\494typ07.dgn

p:\transportation\houston\evergreen\loop494\2910\dgn\rgme\494typ07.dgn



PROPOSED LOOP 494 TYPICAL SECTION  
STA 915+86.00 TO STA 918+43.20

8

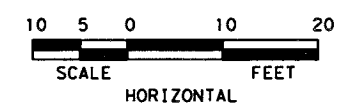


PROPOSED LOOP 494 TYPICAL SECTION  
STA 915+60.00 TO STA 915+86.00

7

- LEGEND**
- ① CONCRETE PVMT (CONT-REINF-CRCP) (12")
  - ② 1" ASPHALT STAB BASE (GR 4) (PG58)
  - ③ 6" CEMENT TREATED BASE
  - ④ 6" CEMENT TREATED SUBGRADE
  - ⑤ 6" CURB (TY 1)
  - ⑥ 4" CONC SIDEWALK
  - ⑦ BLOCK SODDING
  - ⑧ LANDSCAPE PAVER
  - ⑨ CURB RAMP (TY 7)
  - ⑩ 15" CONC FAST TRACK
  - ⊗ TYPICAL SECTION NUMBER
  - ◇ DRIVEWAY SUMMARY
  - ⤵ CURVE HORIZONTAL CURVE NUMBER
  - ← DIRECTION OF TRAFFIC

- NOTES:**
1. FOR THIS SECTION, PAY ADJUSTMENT SCHEDULE FOR RIDE QUALITY IS BASED ON SCHEDULE 2 AND SURFACE TEST TYPE B.
  2. ALL STATIONS ARE TO LOOP 494 & UNLESS OTHERWISE NOTED.



90% SUBMITTAL

DOCUMENT INCOMPLETE: Not intended for permit, bidding, or construction.  
 Engineer: RICARDO J. VILLAGRAND  
 P.E. Serial No: 90339  
 Date: DECEMBER 11, 2006

DATE	BY	REV	REVISION

Texas Department of Transportation

**f.g.miller** engineers  
 since 1966

12121 wickchester  
 suite 200  
 houston, texas 77079  
 (713) 461-9600

LOOP 494  
 Exhibit 4  
 PROPOSED  
 TYPICAL SECTIONS

SHEET 4 OF 5

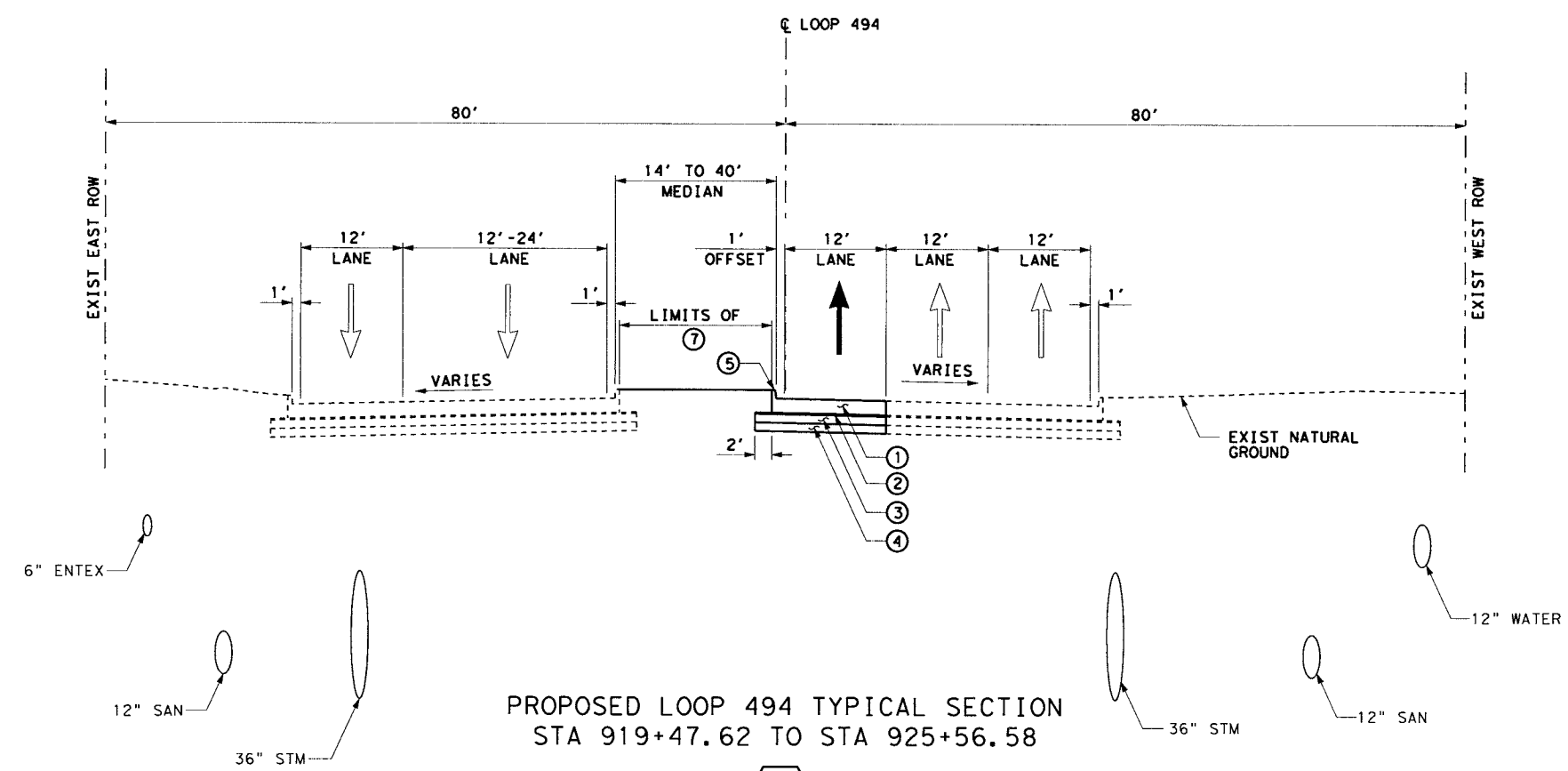
FED. RD. DIV. NO. 6	PROJECT NO.	SHEET NO. 13
DES.: RJV	STATE TEXAS	DIST. HOU
CHK.: RJV	CONTR. TP	COUNTY MONTGOMERY, ETC.
CHK.: JRG	0177-14-010, ETC.	HIQHWAY NO. LOOP 494

2:39:42 PM  
 11/16/2006  
 p:\transportation\houston\evergreen\loop494\2910\dgn\rgme\494typ08.dgn

p:\transportation\houston\evergreen\loop494\2910\dgn\rgme\494typ08.dgn

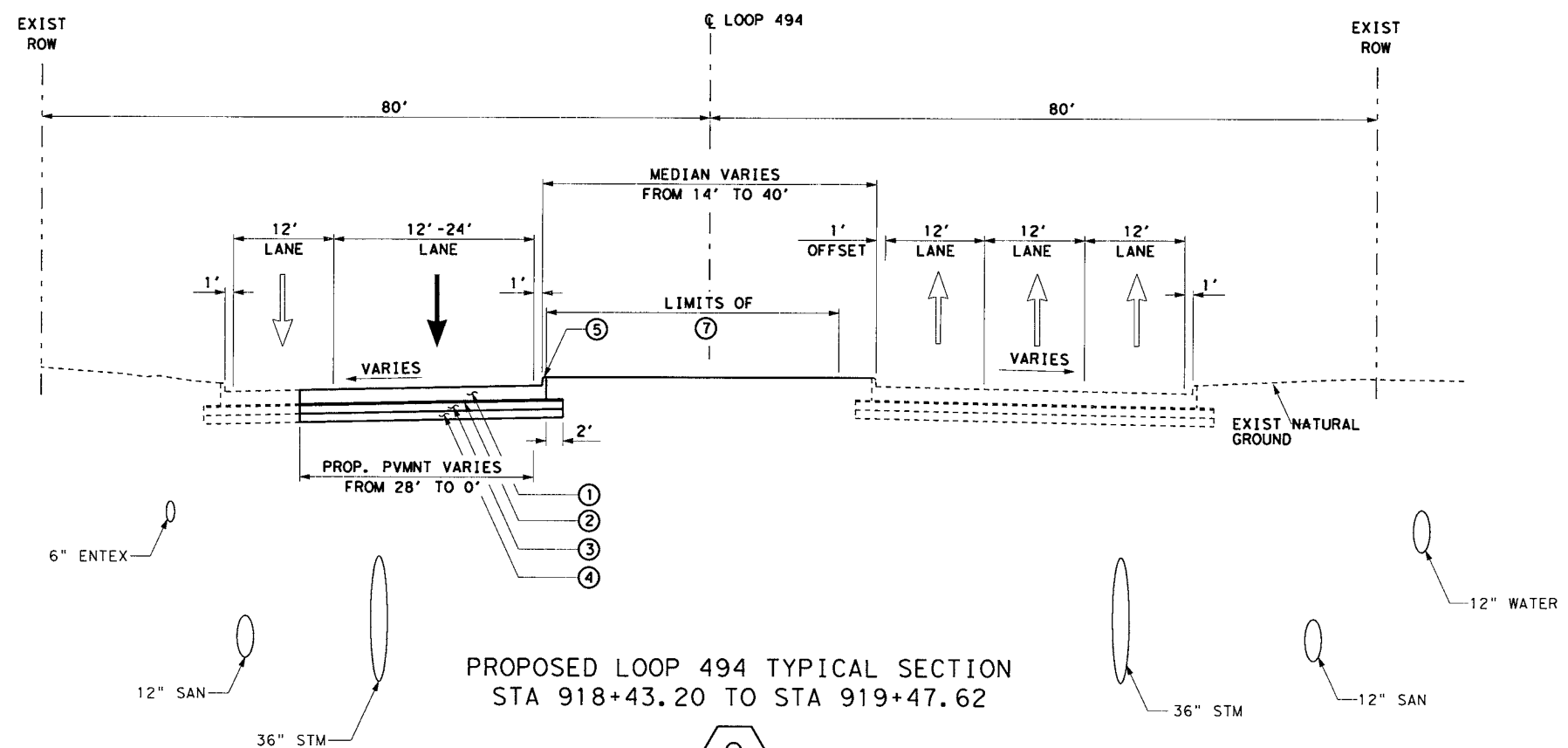
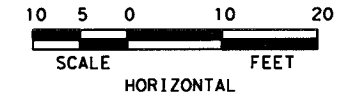
- LEGEND**
- ① CONCRETE PVMT (CONT-REINF-CRCP) (12")
  - ② 1" ASPHALT STAB BASE (GR 4) (PG58)
  - ③ 6" CEMENT TREATED BASE
  - ④ 6" CEMENT TREATED SUBGRADE
  - ⑤ 6" CURB (TY 1)
  - ⑥ 4" CONC SIDEWALK
  - ⑦ BLOCK SODDING
  - ⑧ LANDSCAPE PAVER
  - ⑨ CURB RAMP (TY 7)
  - ⑩ 15" CONC FAST TRACK
  - ⊗ TYPICAL SECTION NUMBER
  - ◇ DRIVEWAY SUMMARY
  - (CURVE) HORIZONTAL CURVE NUMBER
  - ← DIRECTION OF TRAFFIC

- NOTES:**
- FOR THIS SECTION, PAY ADJUSTMENT SCHEDULE FOR RIDE QUALITY IS BASED ON SCHEDULE 2 AND SURFACE TEST TYPE B.
  - ALL STATIONS ARE TO LOOP 494 & UNLESS OTHERWISE NOTED.



PROPOSED LOOP 494 TYPICAL SECTION  
STA 919+47.62 TO STA 925+56.58

⑩



PROPOSED LOOP 494 TYPICAL SECTION  
STA 918+43.20 TO STA 919+47.62

⑨

90% SUBMITTAL

DOCUMENT INCOMPLETE: Not intended for permit, bidding, or construction.  
Engineer: RICARDO J. VILLAGRAND  
P.E. Serial No: 90339  
Date: DECEMBER 11, 2006

DATE	BY	REV	REVISION

Texas Department of Transportation

r.g.miller  
engineers  
since 1966  
12121 wickchester  
suite 200  
houston, texas 77079  
(713) 461-9600

LOOP 494  
Exhibit 4  
PROPOSED  
TYPICAL SECTIONS

SHEET 5 OF 5

FED. RD. DIV. NO. 6	PROJECT NO.	SHEET NO. 14
DES.: RJV	STATE	DIST. COUNTY
CHK.: RJV	TEXAS	HOU MONTGOMERY, ETC.
DWN.: TP	CONT.	SECT. JOB HIGHWAY NO.
CHK.: JRG	0177-14-010, ETC.	LOOP 494

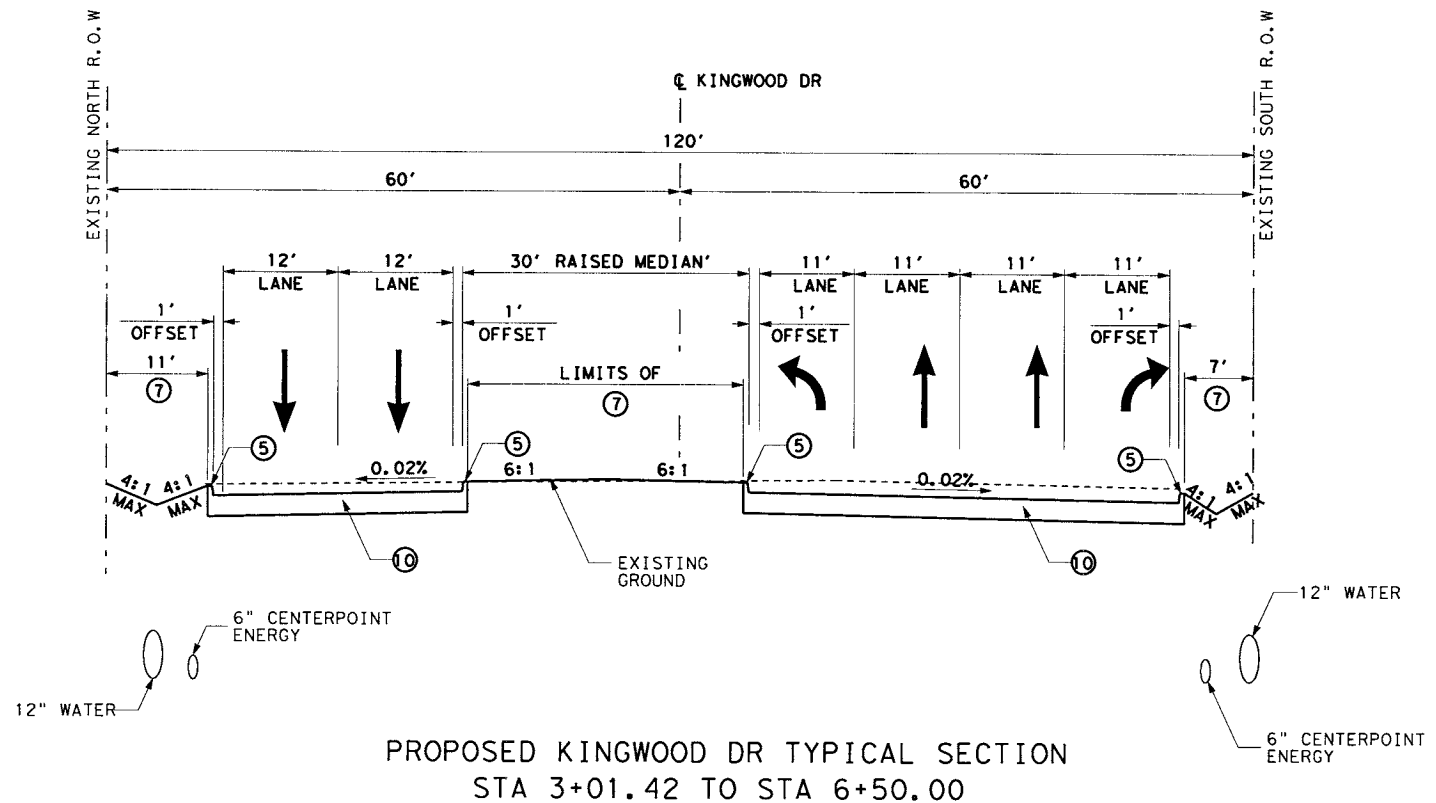
2:39:42 PM  
 11/16/2006  
 p:\transport\at\on\tdot\houston\evergreen\loop494\2910\dgn\rgme\494typ09.dgn

p:\transport\at\on\tdot\houston\evergreen\loop494\2910\dgn\rgme\494typ09.dgn

- LEGEND**
- ① CONCRETE PVMT (CONT-REINF-CRCP) (12")
  - ② 1" ASPHALT STAB BASE (GR 4) (PG58)
  - ③ 6" CEMENT TREATED BASE
  - ④ 6" CEMENT TREATED SUBGRADE
  - ⑤ 6" CURB (TY I)
  - ⑥ 4" CONC SIDEWALK
  - ⑦ BLOCK SODDING
  - ⑧ LANDSCAPE PAVER
  - ⑨ CURB RAMP (TY 7)
  - ⑩ 15" CONC FAST TRACK
  - ⊗ TYPICAL SECTION NUMBER
  - ◇ DRIVEWAY SUMMARY
  - (CURVE) HORIZONTAL CURVE NUMBER
  - ← DIRECTION OF TRAFFIC

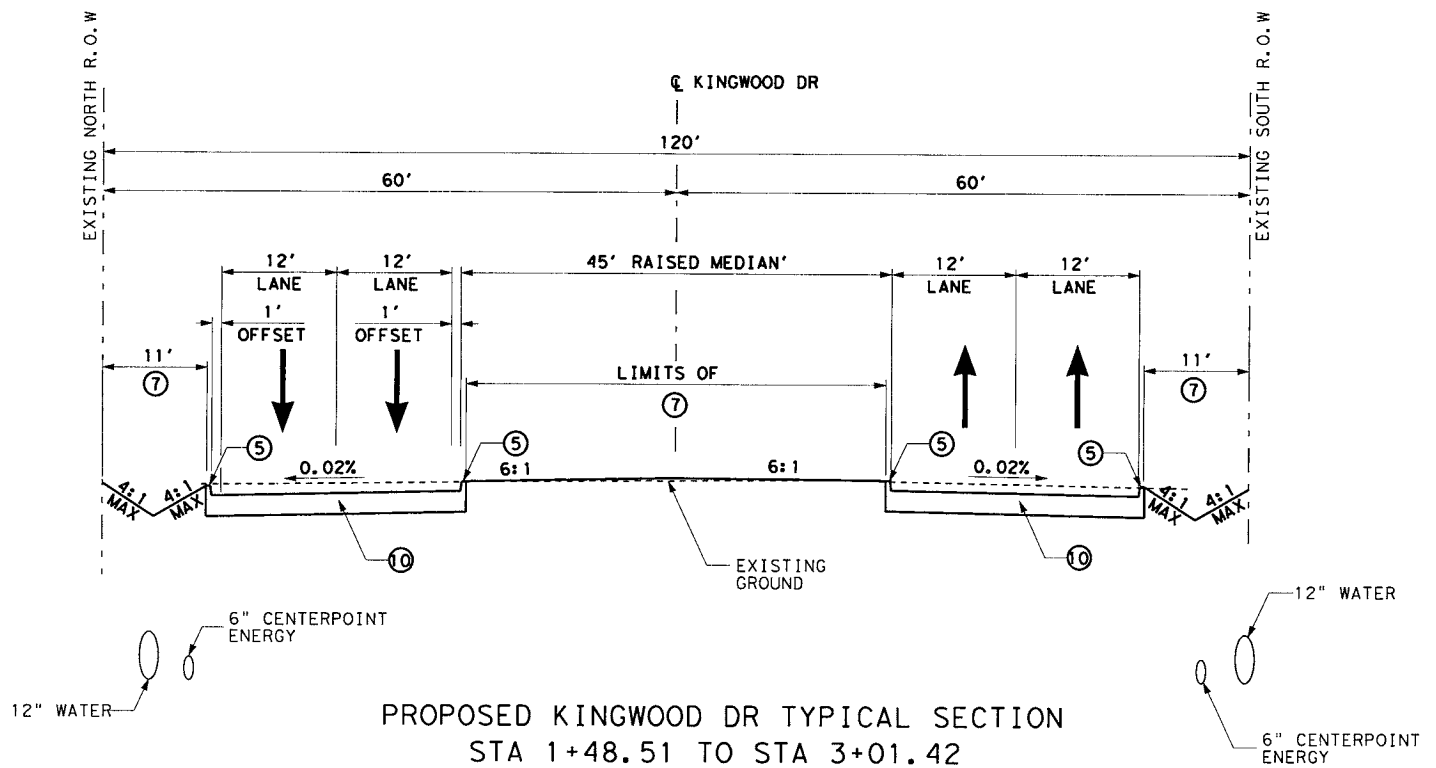
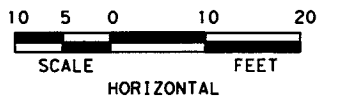
**NOTES:**

1. FOR THIS SECTION, PAY ADJUSTMENT SCHEDULE FOR RIDE QUALITY IS BASED ON SCHEDULE 2 AND SURFACE TEST TYPE B.
2. ALL STATIONS ARE TO LOOP 494 & UNLESS OTHERWISE NOTED.



PROPOSED KINGWOOD DR TYPICAL SECTION  
STA 3+01.42 TO STA 6+50.00

12



PROPOSED KINGWOOD DR TYPICAL SECTION  
STA 1+48.51 TO STA 3+01.42

11

90% SUBMITTAL

DOCUMENT INCOMPLETE: Not intended for permit, bidding, or construction.  
Engineer: RICARDO J. VILLAGRAND  
P.E. Serial No: 90339  
Date: DECEMBER 11, 2006

DATE	BY	REV	REVISION

Texas Department of Transportation

r.g.miller engineers  
12121 wickhamer suite 200  
HOUSTON, TEXAS 77079  
(713) 461-9600

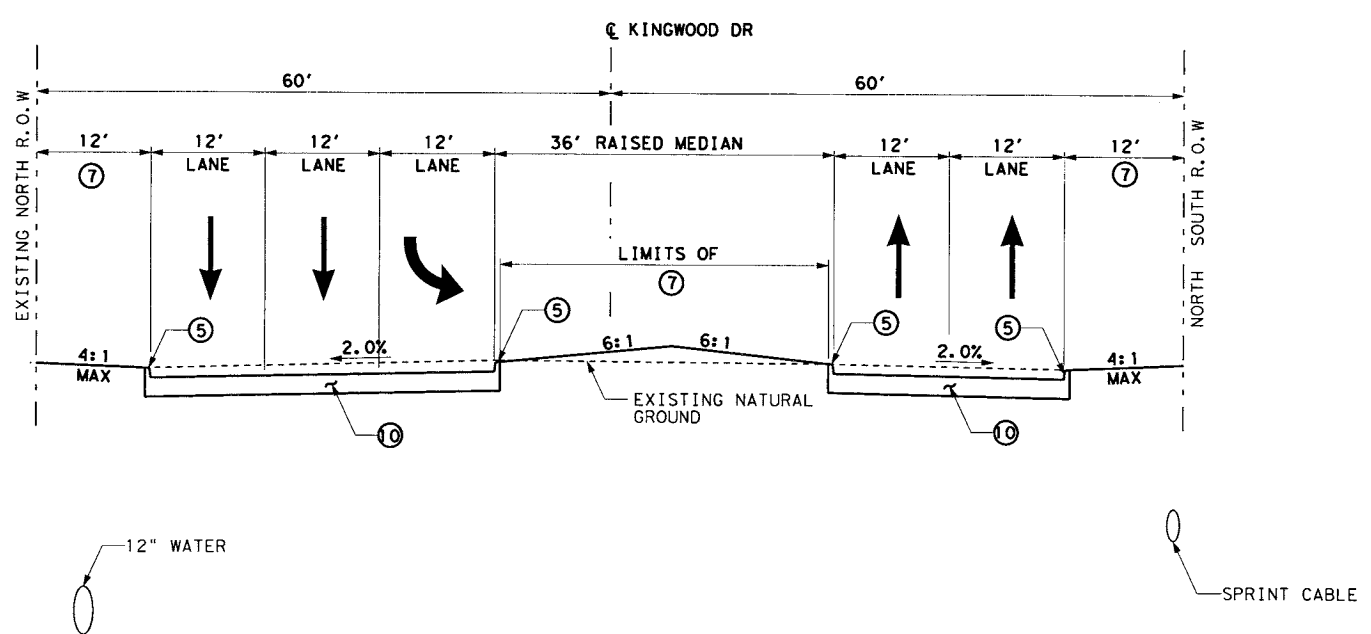
KINGWOOD DR  
Exhibit 4  
PROPOSED  
TYPICAL SECTIONS

SHEET 1 OF 2

FED. RD. DIV. NO. 6	PROJECT NO.	SHEET NO. 15
DES.: RJV	STATE	DIST. COUNTY
CHK.: RJV	TEXAS	HOU MONTGOMERY, ETC.
DWN.: TP	CONT.	SECT. JOB HIGHWAY NO.
CHK.: JRG	0177-14-010, ETC.	LOOP 494

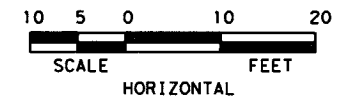
- LEGEND**
- ① CONCRETE PVMT (CONT-REINF-CRCP) (12")
  - ② 1" ASPHALT STAB BASE (GR 4) (PG58)
  - ③ 6" CEMENT TREATED BASE
  - ④ 6" CEMENT TREATED SUBGRADE
  - ⑤ 6" CURB (TY 1)
  - ⑥ 4" CONC SIDEWALK
  - ⑦ BLOCK SODDING
  - ⑧ LANDSCAPE PAVER
  - ⑨ CURB RAMP (TY 7)
  - ⑩ 15" CONC FAST TRACK
  - ⊗ TYPICAL SECTION NUMBER
  - ◇ DRIVEWAY SUMMARY
  - ⤴ CURVE HORIZONTAL CURVE NUMBER
  - ← DIRECTION OF TRAFFIC

- NOTES:**
1. FOR THIS SECTION, PAY ADJUSTMENT SCHEDULE FOR RIDE QUALITY IS BASED ON SCHEDULE 2 AND SURFACE TEST TYPE B.
  2. ALL STATIONS ARE TO LOOP 494 & UNLESS OTHERWISE NOTED.



PROPOSED KINGWOOD DR TYPICAL SECTION  
STA 7+00.00 TO STA 8+00.00

13



90% SUBMITTAL

DOCUMENT INCOMPLETE: Not intended for permit, bidding, or construction.  
 Engineer: RICARDO J. VILLAGRAND  
 P.E. Serial No: 90339  
 Date: DECEMBER 11, 2006

DATE	BY	REV	REVISION

©2006 Texas Department of Transportation

**r.g.miller**  
engineers  
since 1966

12121 wickchester  
suite 200  
houston, texas 77079  
(713) 461-9600

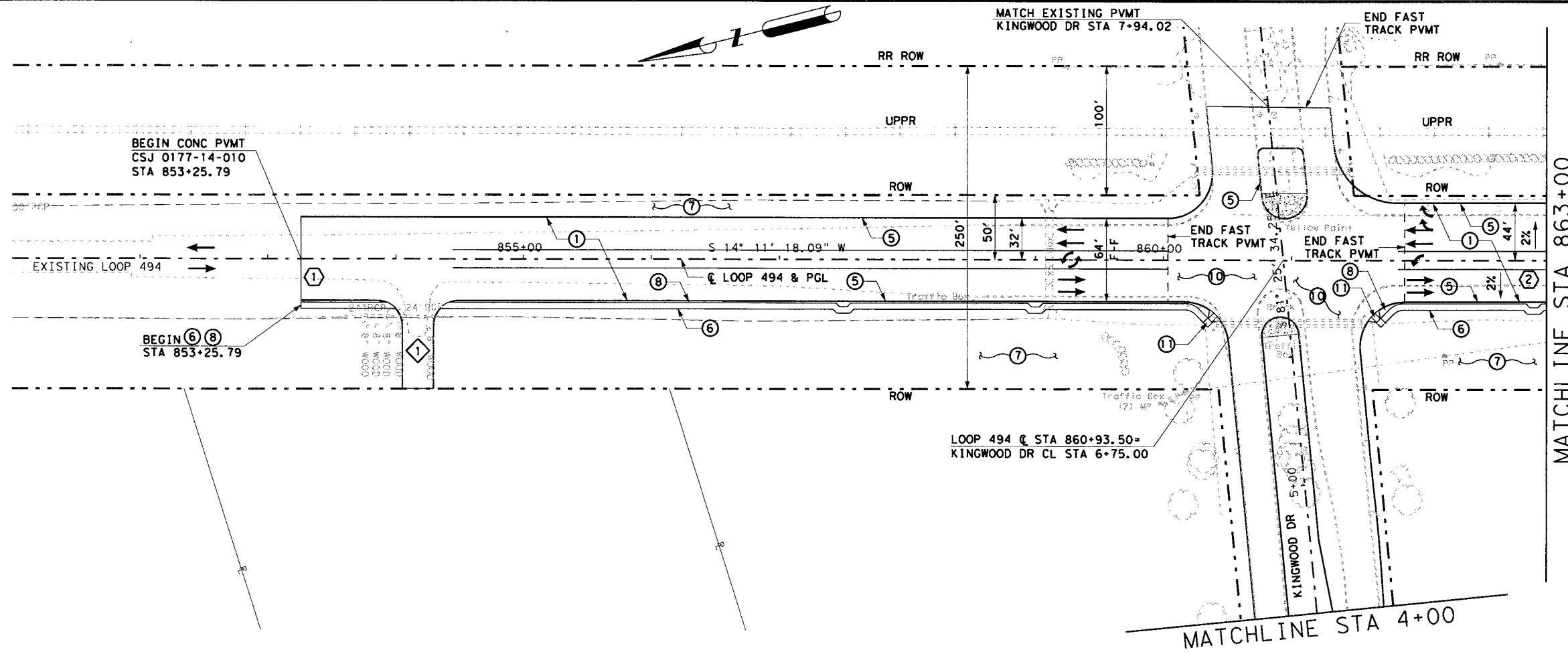
KINGWOOD DR  
Exhibit 4  
PROPOSED  
TYPICAL SECTIONS

SHEET 2 OF 2

FED. RD. DIV. NO.	PROJECT NO.			SHEET NO.
6				16
DES.: RJV	STATE	DIST.	COUNTY	
CHK.: RJV	TEXAS	HOU	MONTGOMERY, ETC.	
DWN.: TP	CONT.	SECT.	JOB	HIGHWAY NO.
CHK.: JRG	0177-14-010, ETC.			LOOP 494

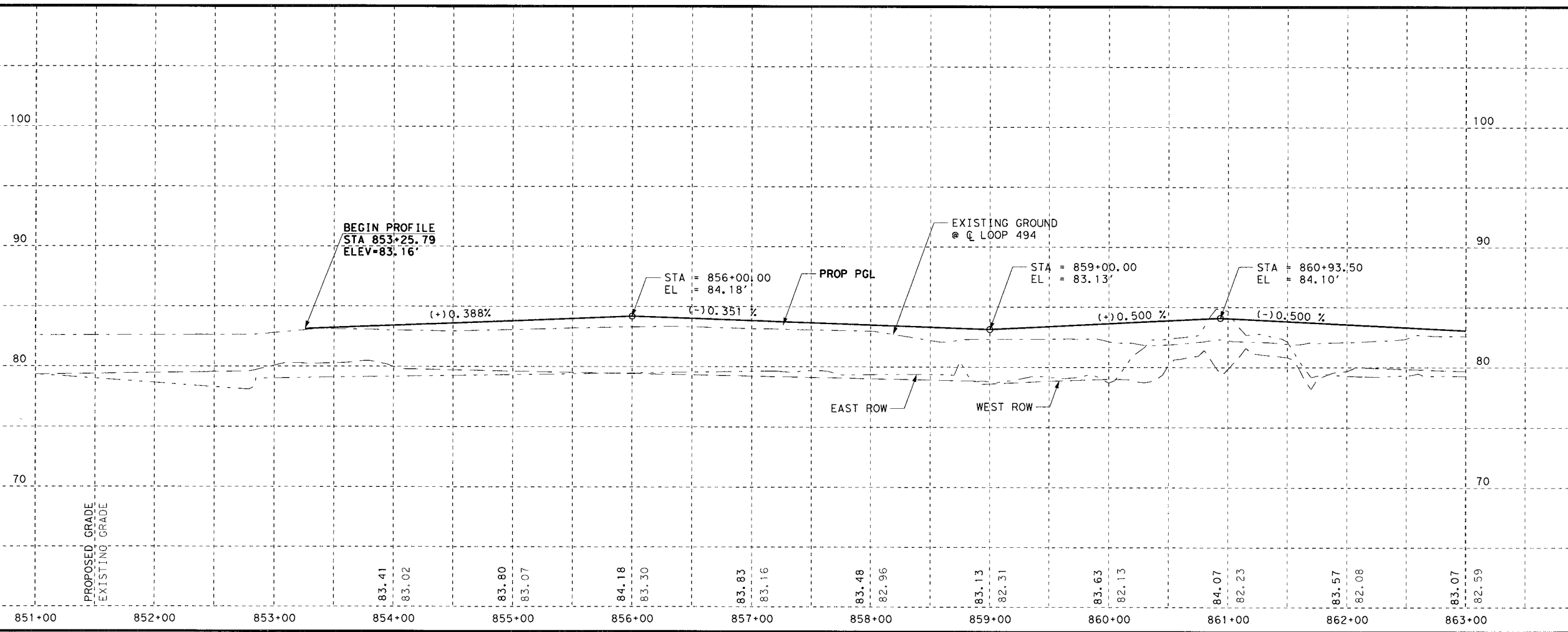
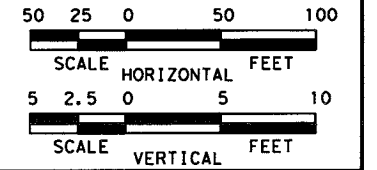
2:39:45 PM  
 11/16/2006  
 p:\transportation\houston\evergreen\loop494\2910\dgn\vr\gme\494typ11.dgn

p:\transportation\houston\evergreen\loop494\2910\dgn\vr\gme\494typ11.dgn



- LEGEND**
- ① CONC PVMT (CONT REINF-CRCP) (12")
  - ② 1" ASPHALT STAB BASE (GR 4) (PG 58)
  - ③ 6" CEMENT TREATED BASE
  - ④ 6" CEMENT TREATED SUBGRADE
  - ⑤ 6" CURB (TY 1)
  - ⑥ 4" CONC SIDEWALK
  - ⑦ BLOCK SODDING
  - ⑧ LANDSCAPE PAVER
  - ⑨ CURB RAMP (TY 7)
  - ⑩ 15" CONC FAST TRACK
  - ⑪ CURB RAMP (TY 1)
  - ⑫ RIPRAP (CONC) (CL B) (TINT)
  - ⓧ TYPICAL SECTION NUMBER
  - ◇ DRIVWAY SUMMARY
- (CURVE) HORIZONTAL CURVE NUMBER  
 ← DIRECTION OF TRAFFIC  
 --- LIMITS OF FAST TRACK PAVEMENT

- NOTES:**
1. SEE HORIZONTAL ALIGNMENT DATA SHEET FOR ALL BASELINE AND CURVE DATA.
  2. FOR SODDING LIMITS SEE TYPICAL SECTIONS.
  3. FOR KINGWOOD DR. SEE KINGWOOD DR. PLAN & PROFILE.
  4. ALL STATIONS ARE REFERENCE TO LOOP 494, UNLESS OTHERWISE NOTED.

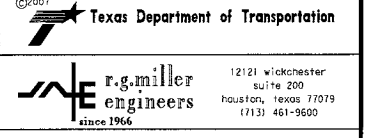


100% SUBMITTAL

DOCUMENT INCOMPLETE: Not intended for permit, bidding, or construction.

Engineer: RICARDO J. VILLAGRAND  
 P.E. Serial No: 90339  
 Date: MAY 28, 2007

DATE	BY	REV	REVISION



**LOOP 494**

**PLAN AND PROFILE**

STA 853+25.79 TO STA 863+00.00

SHEET 1 OF 7

FED. RD. DIV. NO.	PROJECT NO.	SHEET NO.
6		91
DES.: RJV	STATE	DIST. COUNTY
CHK.: RJV	TEXAS	HOU MONTGOMERY, ETC.
DWN.: TP	CONT.	SECT. JOB HIGHWAY NO.
CHK.: JRG	0177-14-010, ETC.	LOOP 494

11:06:29 PM 11/6/2007 p:\transportation\houston\evergreen\loop494\2910\dgn\rgme\494rpp01.dgn

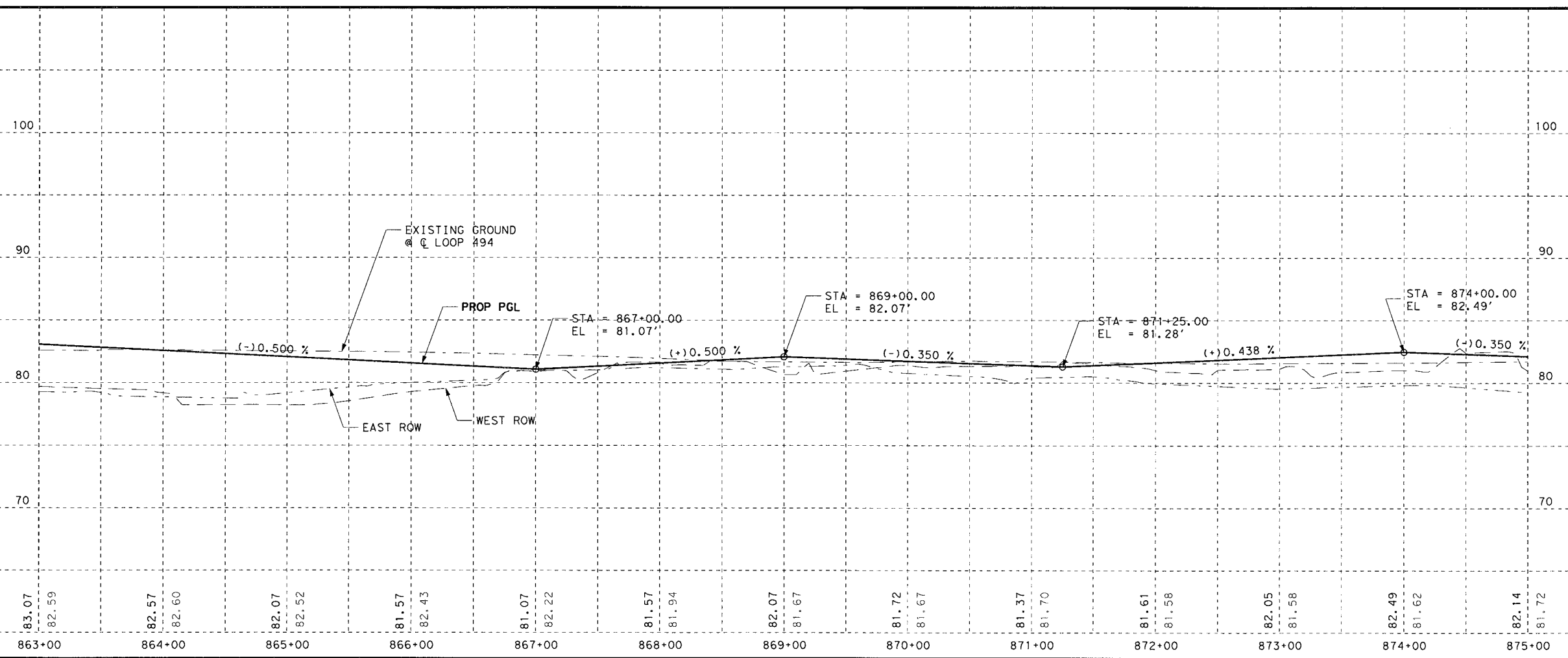
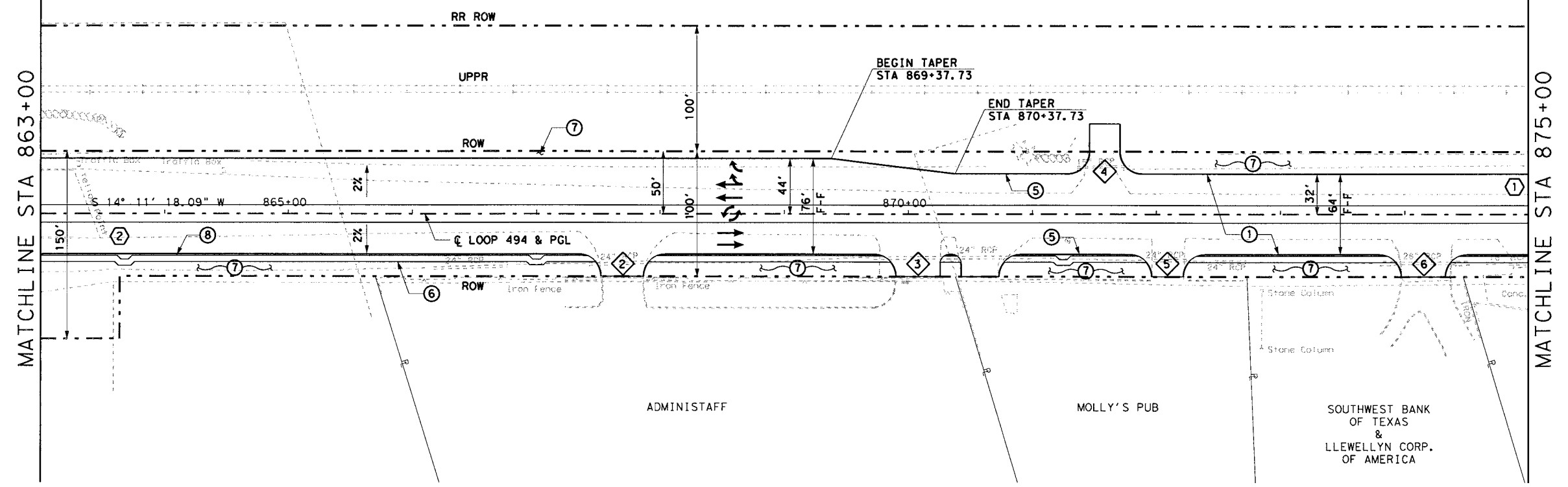
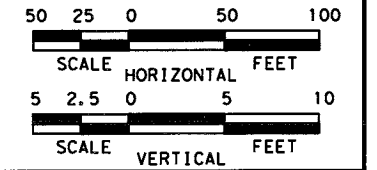
p:\transportation\houston\evergreen\loop494\2910\dgn\rgme\494rpp01.dgn





- LEGEND**
- ① CONC PVMT (CONT REINF-CRCP) (12")
  - ② 1" ASPHALT STAB BASE (GR 4) (PG 58)
  - ③ 6" CEMENT TREATED BASE
  - ④ 6" CEMENT TREATED SUBGRADE
  - ⑤ 6" CURB (TY 1)
  - ⑥ 4" CONC SIDEWALK
  - ⑦ BLOCK SODDING
  - ⑧ LANDSCAPE PAVER
  - ⑨ CURB RAMP (TY 7)
  - ⑩ 15" CONC FAST TRACK
  - ⑪ CURB RAMP (TY 1)
  - ⑫ RIPRAP (CONC) (CL B) (TINT)
  - ⓧ TYPICAL SECTION NUMBER
  - ◇ DRIVWAY SUMMARY
  - (CURVE) HORIZONTAL CURVE NUMBER
  - ← DIRECTION OF TRAFFIC
  - - - LIMITS OF FAST TRACK PAVEMENT

- NOTES:**
1. SEE HORIZONTAL ALIGNMENT DATA SHEET FOR ALL BASELINE AND CURVE DATA.
  2. FOR SODDING LIMITS SEE TYPICAL SECTIONS.
  3. FOR KINGWOOD DR. SEE KINGWOOD DR. PLAN & PROFILE.
  4. ALL STATIONS ARE REFERENCE TO LOOP 494, UNLESS OTHERWISE NOTED.



100% SUBMITTAL

DOCUMENT INCOMPLETE: Not intended for permit, bidding, or construction.

Engineer: RICARDO J. VILLAGRAND  
P.E. Serial No.: 90339  
Date: MAY 28, 2007

DATE	BY	REV	REVISION

Texas Department of Transportation

r.g.miller engineers  
12121 wickchester suite 200  
Houston, Texas 77079  
(713) 461-9600

LOOP 494

PLAN AND PROFILE  
STA 863+00 TO STA 875+00

SHEET 2 OF 7

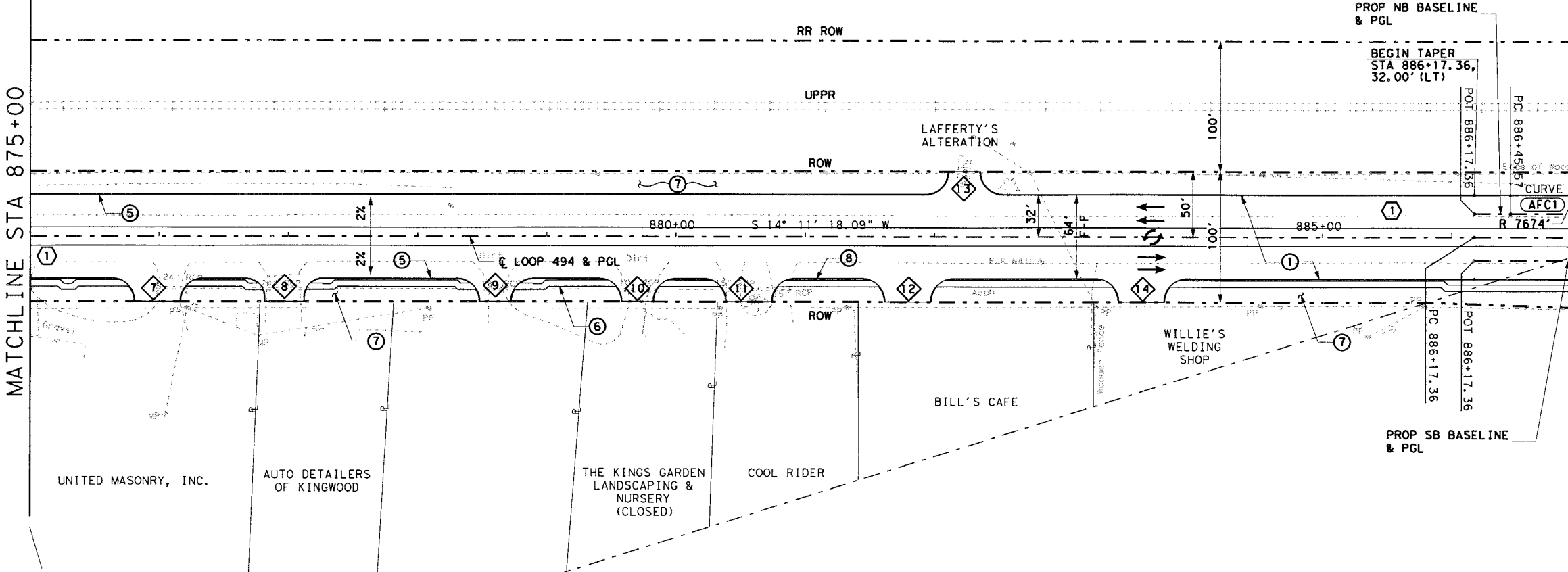
FED. RD. DIV. NO. 6	PROJECT NO.	SHEET NO. 92
DES.: RJV	STATE: TEXAS	DIST.: HOU
CHK.: RJV	COUNTY: MONTGOMERY, ETC.	
DOWN.: TP	CONTR. NO.	SECT. NO.
CHK.: JRG	0177-14-010, ETC.	JOB NO.
		LOOP 494

10:52:27 AM  
 11/6/2007  
 p:\transportat\on\tdot\houston\evergreen\loop494\2910\dgn\vrme\494rpp02.dgn

p:\transportat\on\tdot\houston\evergreen\loop494\2910\dgn\vrme\494rpp02.dgn

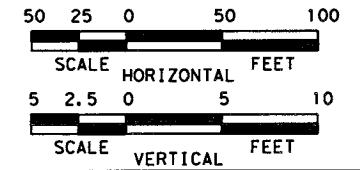
MATCHLINE STA 875+00

MATCHLINE STA 887+00

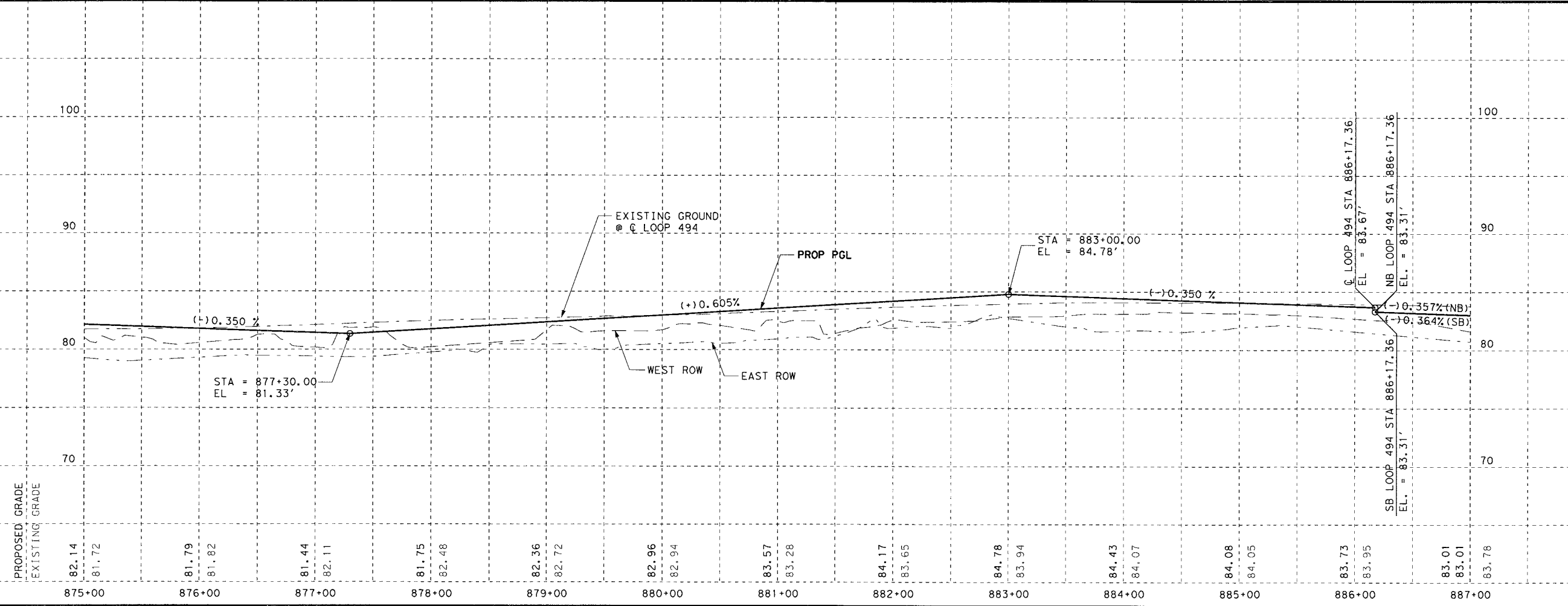


- LEGEND**
- ① CONC PVMT (CONT REINF-CRCP) (12")
  - ② 1" ASPHALT STAB BASE (GR 4) (PG 58)
  - ③ 6" CEMENT TREATED BASE
  - ④ 6" CEMENT TREATED SUBGRADE
  - ⑤ 6" CURB (TY 1)
  - ⑥ 4" CONC SIDEWALK
  - ⑦ BLOCK SODDING
  - ⑧ LANDSCAPE PAVER
  - ⑨ CURB RAMP (TY 7)
  - ⑩ 15" CONC FAST TRACK
  - ⑪ CURB RAMP (TY 1)
  - ⑫ RIPRAP (CONC) (CL B) (TINT)
  - ⓧ TYPICAL SECTION NUMBER
  - ◇ DRIVWAY SUMMARY
  - (CURVE) HORIZONTAL CURVE NUMBER
  - ← DIRECTION OF TRAFFIC
  - - - LIMITS OF FAST TRACK PAVEMENT

- NOTES:**
1. SEE HORIZONTAL ALIGNMENT DATA SHEET FOR ALL BASELINE AND CURVE DATA.
  2. FOR SODDING LIMITS SEE TYPICAL SECTIONS.
  3. FOR KINGWOOD DR. SEE KINGWOOD DR. PLAN & PROFILE.
  4. ALL STATIONS ARE REFERENCE TO LOOP 494, UNLESS OTHERWISE NOTED.



10:52:28 AM 11/6/2007 p:\transport\ton\tdot\houston\evergreen\loop494\2910\dgn\rgne\494r\pp03.dgn



100% SUBMITTAL

DOCUMENT INCOMPLETE: Not intended for permit, bidding, or construction.

Engineer: RICARDO J. VILLAGRAND  
 P.E. Serial No.: 90339  
 Date: MAY 28, 2007

DATE	BY	REV	REVISION

©2007 Texas Department of Transportation

**r.g.miller engineers** since 1966  
 12121 wickchester suite 200  
 Houston, Texas 77079  
 (713) 461-9600

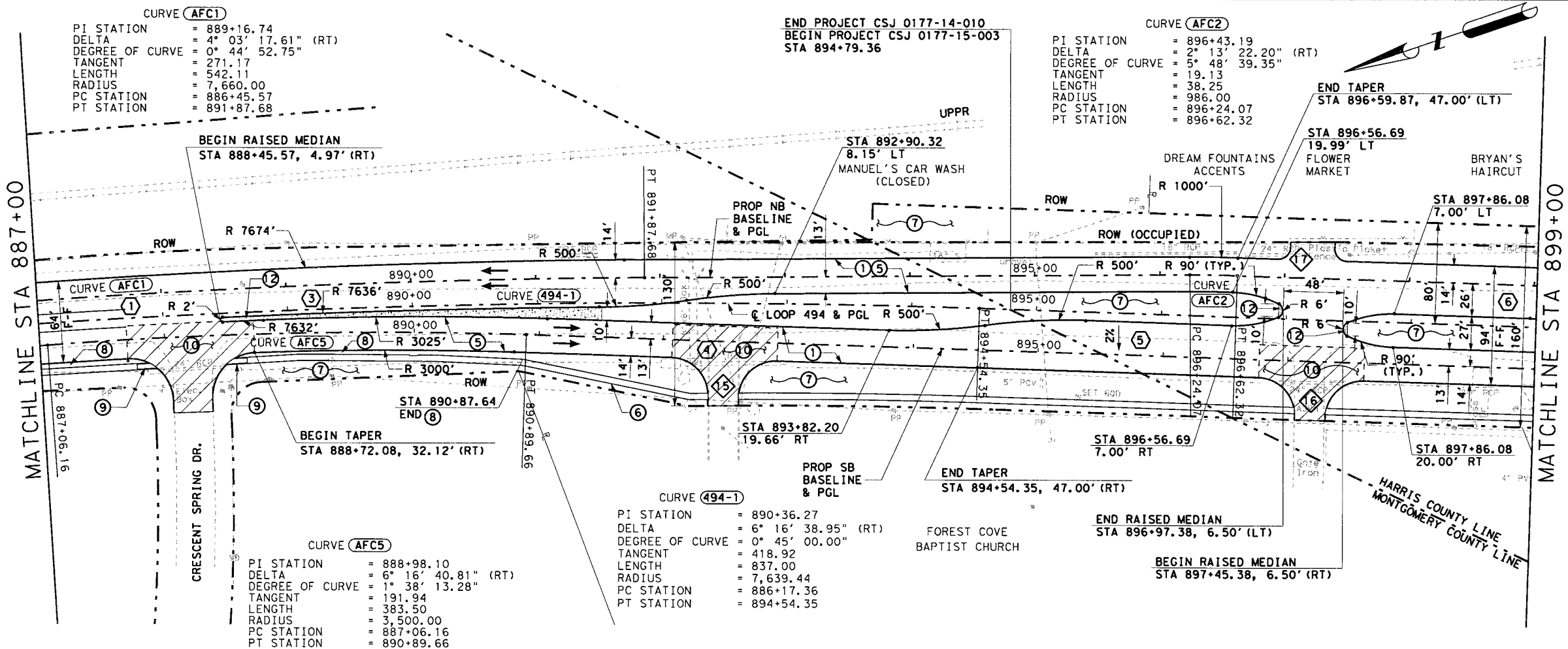
**LOOP 494**

**PLAN AND PROFILE**  
 STA 875+00 TO STA 887+00

SHEET 3 OF 7

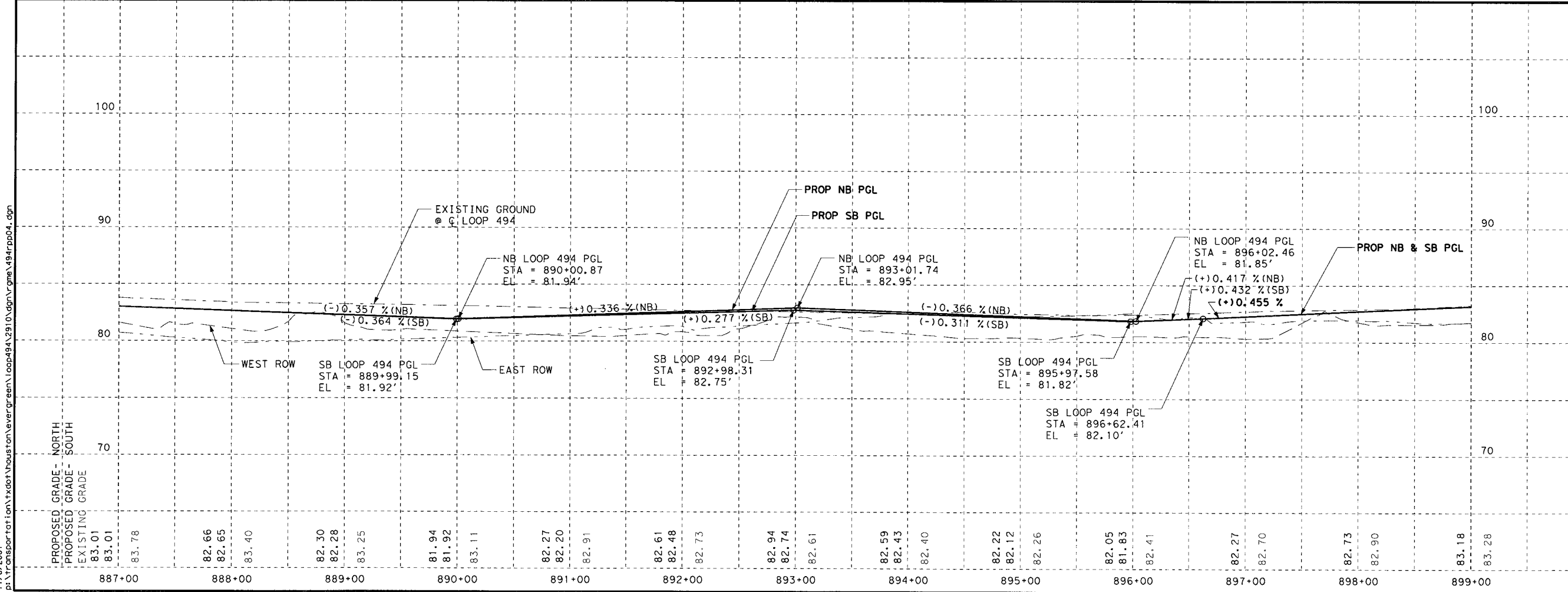
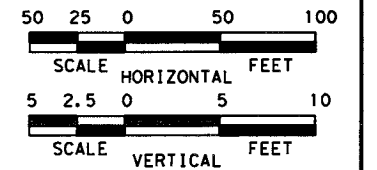
FED. RD. DIV. NO.	PROJECT NO.	SHEET NO.
6		93

DES.: RJV	STATE	DIST.	COUNTY
CHK.: RJV	TEXAS	HOU	MONTGOMERY, ETC.
DNW.: TP	CONTR.	SECT.	JOB
CHK.: JRG	0177-14-010, ETC.		LOOP 494



- LEGEND**
- ① CONC PVMT (CONT REINF-CRCP) (12")
  - ② 1" ASPHALT STAB BASE (GR 4) (PG 58)
  - ③ 6" CEMENT TREATED BASE
  - ④ 6" CEMENT TREATED SUBGRADE
  - ⑤ 6" CURB (TY 1)
  - ⑥ 4" CONC SIDEWALK
  - ⑦ BLOCK SODDING
  - ⑧ LANDSCAPE PAVER
  - ⑨ CURB RAMP (TY 7)
  - ⑩ 15" CONC FAST TRACK
  - ⑪ CURB RAMP (TY 1)
  - ⑫ RIPRAP (CONC) (CL B) (TINT)
  - ⓧ TYPICAL SECTION NUMBER
  - ◇ DRIVEWAY SUMMARY
  - (CURVE) HORIZONTAL CURVE NUMBER
  - ← DIRECTION OF TRAFFIC
  - - - LIMITS OF FAST TRACK PAVEMENT

- NOTES:**
- SEE HORIZONTAL ALIGNMENT DATA SHEET FOR ALL BASELINE AND CURVE DATA.
  - FOR SODDING LIMITS SEE TYPICAL SECTIONS.
  - FOR KINGWOOD DR. SEE KINGWOOD DR. PLAN & PROFILE.
  - ALL STATIONS ARE REFERENCE TO LOOP 494, UNLESS OTHERWISE NOTED.



**100% SUBMITTAL**

DOCUMENT INCOMPLETE: Not intended for permit, bidding, or construction.

Engineer: RICARDO J. VILLAGRAND  
 P.E. Serial No: 90339  
 Date: MAY 28, 2007

DATE	BY	REV	REVISION

**LOOP 494**

**PLAN AND PROFILE**  
STA 887+00 TO STA 899+00

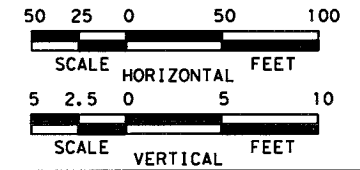
SHEET 4 OF 7

FED. RD. DIV. NO. 6	PROJECT NO. 0177-14-010, ETC.	SHEET NO. 94
DES.: RJV	STATE: TEXAS	DIST.: HOU
CHK.: RJV	COUNTY: MONTGOMERY, ETC.	JOB NO. 0177-14-010, ETC.
DWN.: TP	CONTRACT: 0177-14-010, ETC.	SECTION: LOOP 494
CHK.: JRG	DATE: 0177-14-010, ETC.	NO. 0177-14-010, ETC.

10:52:29 AM  
 11/6/2007  
 p:\transportation\houston\evergreen\loop494\2910\dgn\rgme\494r.ppt4.dgn

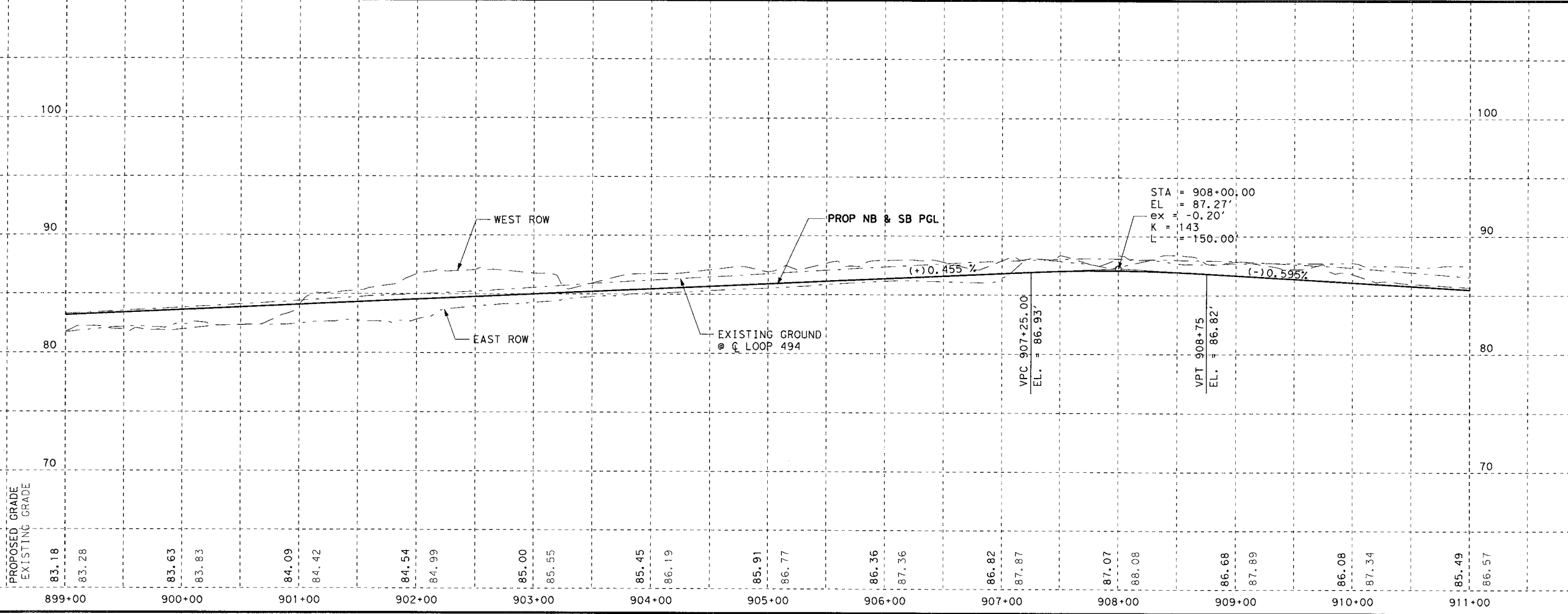
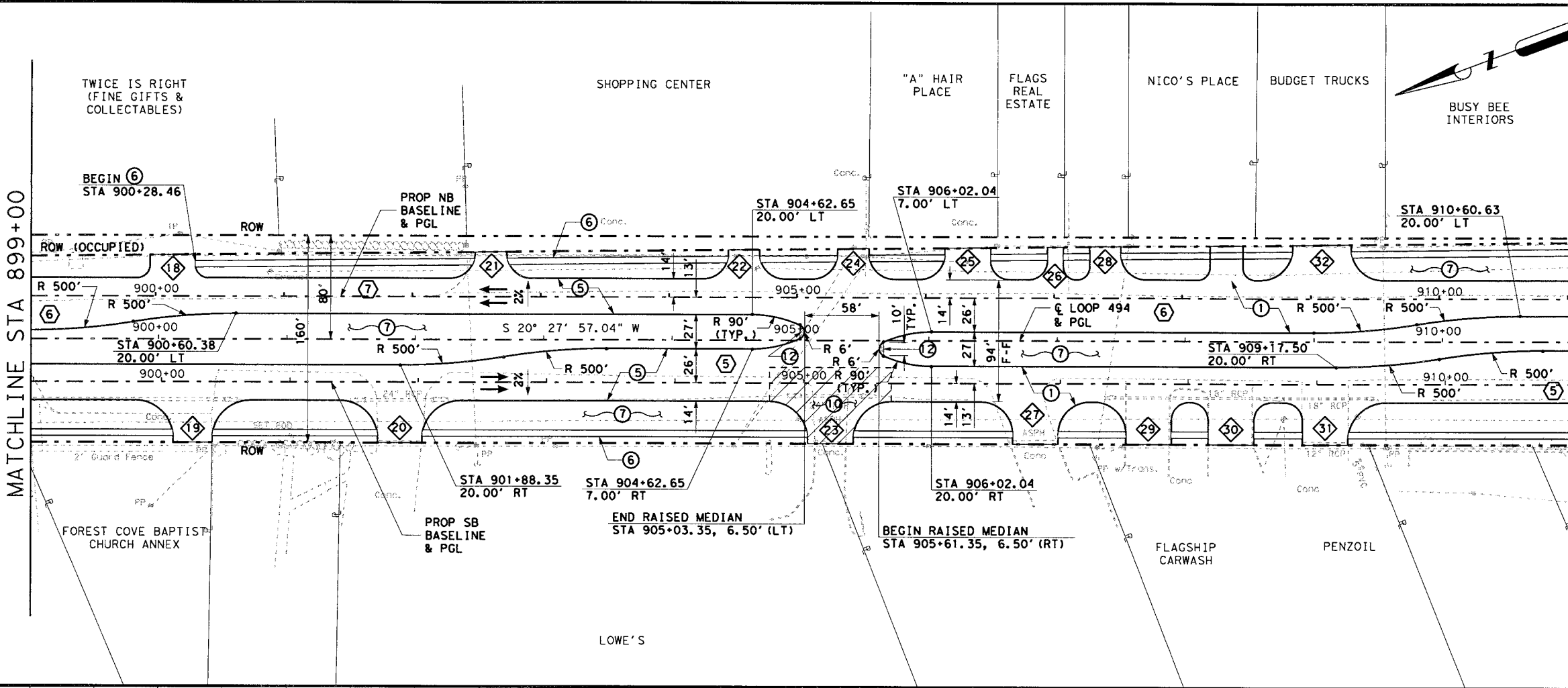
- LEGEND**
- ① CONC PVMT (CONT REINF-CRCP) (12")
  - ② 1" ASPHALT STAB BASE (GR 4) (PG 58)
  - ③ 6" CEMENT TREATED BASE
  - ④ 6" CEMENT TREATED SUBGRADE
  - ⑤ 6" CURB (TY 1)
  - ⑥ 4" CONC SIDEWALK
  - ⑦ BLOCK SODDING
  - ⑧ LANDSCAPE PAVER
  - ⑨ CURB RAMP (TY 7)
  - ⑩ 15" CONC FAST TRACK
  - ⑪ CURB RAMP (TY 1)
  - ⑫ RIPRAP (CONC) (CL B) (TINT)
  - X TYPICAL SECTION NUMBER
  - ◇ DRIVWAY SUMMARY
  - (CURVE) HORIZONTAL CURVE NUMBER
  - ← DIRECTION OF TRAFFIC
  - LIMITS OF FAST TRACK PAVEMENT

- NOTES:**
1. SEE HORIZONTAL ALIGNMENT DATA SHEET FOR ALL BASELINE AND CURVE DATA.
  2. FOR SODDING LIMITS SEE TYPICAL SECTIONS.
  3. FOR KINGWOOD DR. SEE KINGWOOD DR. PLAN & PROFILE.
  4. ALL STATIONS ARE REFERENCE TO LOOP 494, UNLESS OTHERWISE NOTED.



MATCHLINE STA 899+00

MATCHLINE STA 911+00



100% SUBMITTAL

DOCUMENT INCOMPLETE: Not intended for permit, bidding, or construction.

Engineer: RICARDO J. VILLAGRAND

P.E. Serial No: 90339

Date: MAY 28, 2007

DATE	BY	REV	REVISION

Texas Department of Transportation

**r.g. miller** engineers since 1966

12121 wickchester suite 200 houston, texas 77079 (713) 461-9600

**LOOP 494**

**PLAN AND PROFILE**

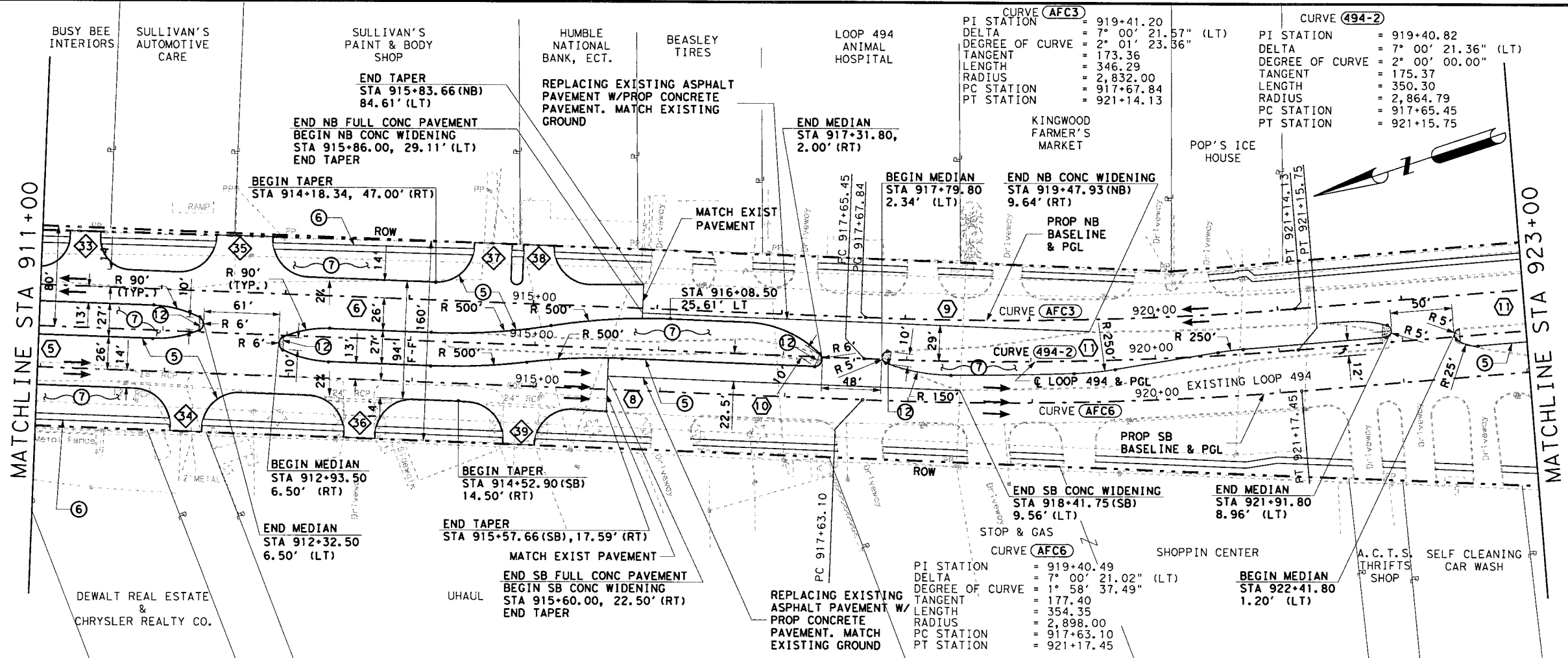
STA 899+00 TO STA 911+00

SHEET 5 OF 7

FED. RD. DIV. NO.	PROJECT NO.	SHEET NO.
6		95
DES.: RJV	STATE	DIST.
CHK.: RJV	TEXAS	HOU MONTGOMERY, ETC.
DNW.: TP	CONT.	SECT.
CHK.: JRG	0177-14-010, ETC.	LOOP 494

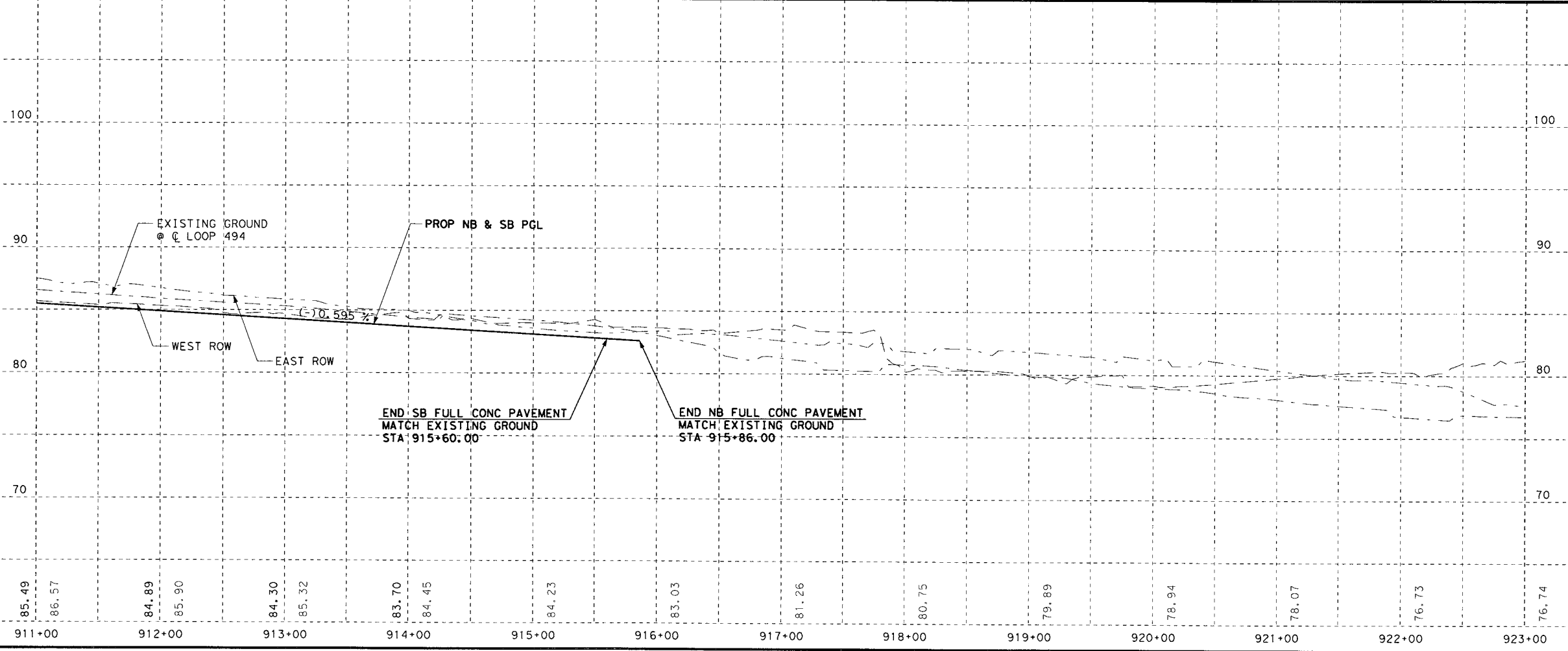
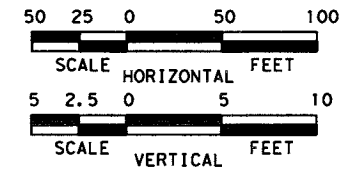
10:52:30 AM 11/6/2007 p:\transportation\houston\evergreen\loop494\2910\dgn\rjme\494rpp05.dgn

p:\transportation\houston\evergreen\loop494\2910\dgn\rjme\494rpp05.dgn



- LEGEND**
- ① CONC PVMT (CONT REINF-CRCP) (12")
  - ② 1" ASPHALT STAB BASE (GR 4) (PG 58)
  - ③ 6" CEMENT TREATED BASE
  - ④ 6" CEMENT TREATED SUBGRADE
  - ⑤ 6" CURB (TY 1)
  - ⑥ 4" CONC SIDEWALK
  - ⑦ BLOCK SODDING
  - ⑧ LANDSCAPE PAVER
  - ⑨ CURB RAMP (TY 7)
  - ⑩ 15" CONC FAST TRACK
  - ⑪ CURB RAMP (TY 1)
  - ⑫ RIPRAP (CONC) (CL B) (TINT)
  - ⓧ TYPICAL SECTION NUMBER
  - ◇ DRIVWAY SUMMARY
  - (CURVE) HORIZONTAL CURVE NUMBER
  - ← DIRECTION OF TRAFFIC
  - - - LIMITS OF FAST TRACK PAVEMENT

- NOTES:**
- SEE HORIZONTAL ALIGNMENT DATA SHEET FOR ALL BASELINE AND CURVE DATA.
  - FOR SODDING LIMITS SEE TYPICAL SECTIONS.
  - FOR KINGWOOD DR. SEE KINGWOOD DR. PLAN & PROFILE.
  - ALL STATIONS ARE REFERENCE TO LOOP 494, UNLESS OTHERWISE NOTED.



100% SUBMITTAL

DOCUMENT INCOMPLETE: Not intended for permit, bidding, or construction.

Engineer: RICARDO J. VILLAGRAND  
 P.E. Serial No: 90339  
 Date: MAY 28, 2007

DATE	BY	REV	REVISION

Texas Department of Transportation

**r.g.miller** engineers  
 since 1966

12121 wickchester suite 200  
 Houston, Texas 77079  
 (713) 461-9600

**LOOP 494**

**PLAN AND PROFILE**

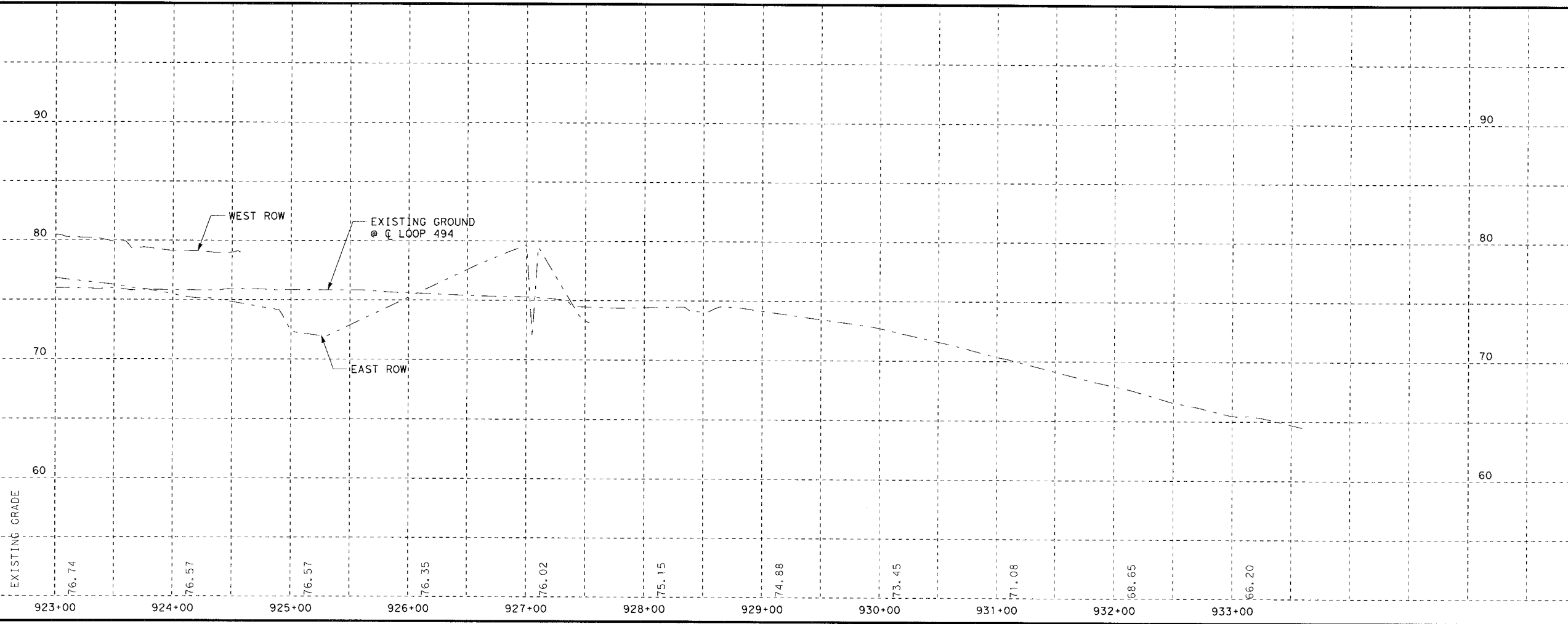
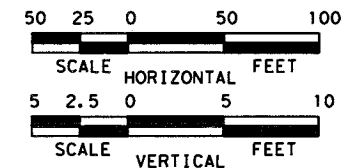
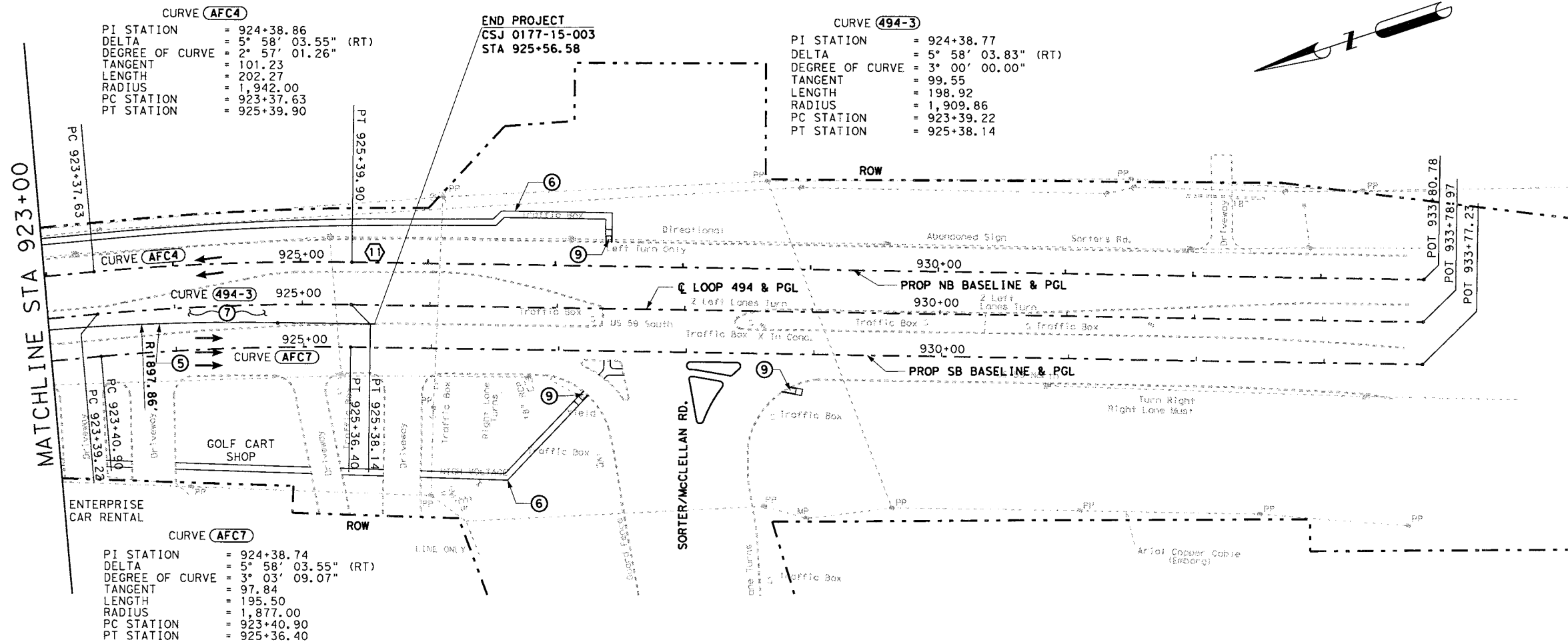
STA 911+00 TO STA 923+00

SHEET 6 OF 7

FED. RD. DIV. NO. 6	PROJECT NO. 0177-14-010, ETC.	SHEET NO. 96
DES.: RJV	STATE: TEXAS	DIST.: HOU. COUNTY: MONTGOMERY, ETC.
CHK.: RJV	CONTR. NO. 0177-14-010, ETC.	JOB NO. LOOP 494
DWN.: TP	SECT. NO.	HIGHWAY NO.
CHK.: JRG	0177-14-010, ETC.	LOOP 494

10:52:30 AM  
 11/6/2007  
 p:\transportation\houston\evergreen\loop494\2910\dgn\gme\494r\pp06.dgn

p:\transportation\houston\evergreen\loop494\2910\dgn\gme\494r\pp06.dgn



100% SUBMITTAL

DOCUMENT INCOMPLETE: Not intended for permit, bidding, or construction.

Engineer: RICARDO J. VILLAGRAND  
 P.E. Serial No.: 90339  
 Date: MAY 28, 2007

DATE	BY	REV	REVISION

©2007 Texas Department of Transportation

**r.g.miller engineers** since 1966  
 12121 wickchester suite 200  
 Houston, Texas 77079  
 (713) 461-9600

**LOOP 494**

**PLAN AND PROFILE**  
 STA 923+00.00 TO STA 925+56.58

SHEET 7 OF 7

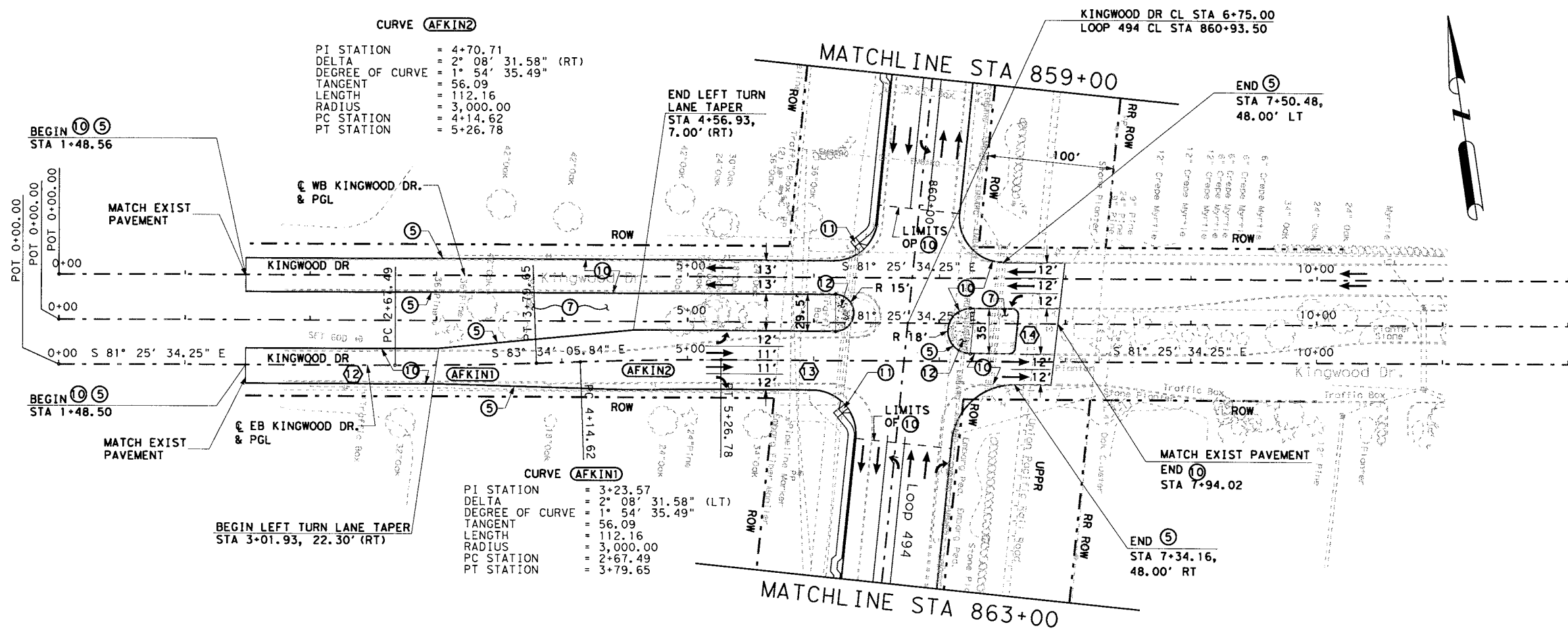
FED. RD. DIV. NO.	PROJECT NO.	SHEET NO.
6		97

DES.	STATE	DIST.	COUNTY
CHK.: RJV	TEXAS	HOU	MONTGOMERY, ETC.

DWN.	CONTR.	SECT.	JOB	HIGHWAY NO.
CHK.: JRG				

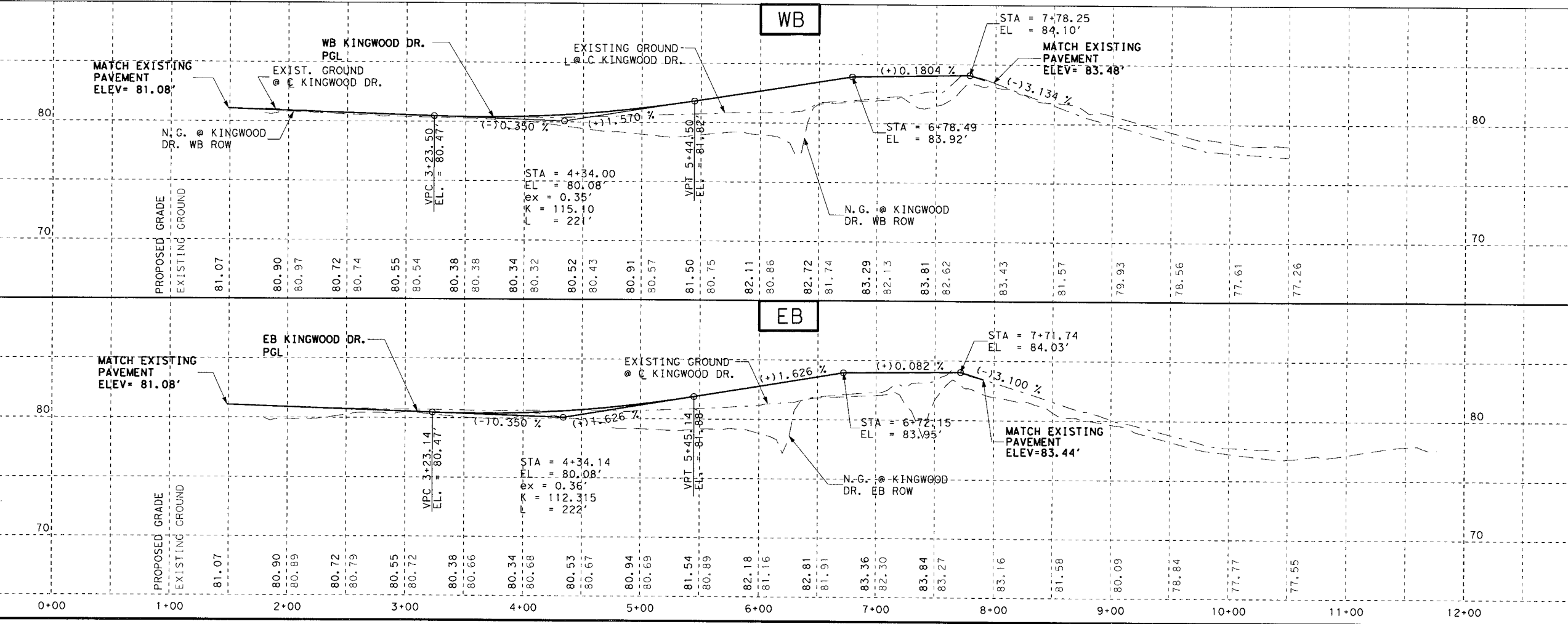
11:06:29 PM  
 11/6/2007  
 p:\transportation\houston\evergreen\loop494\2910\dgn\gme\494r\pp07.dgn

p:\transportation\houston\evergreen\loop494\2910\dgn\gme\494r\pp07.dgn



- LEGEND**
- ① CONC PVMT (CONT REINF-CRCP) (12")
  - ② 1" ASPHALT STAB BASE (GR 4) (PG 58)
  - ③ 6" CEMENT TREATED BASE
  - ④ 6" CEMENT TREATED SUBGRADE
  - ⑤ 6" CURB (TY 1)
  - ⑥ 4" CONC SIDEWALK
  - ⑦ BLOCK SODDING
  - ⑧ LANDSCAPE PAVER
  - ⑨ CURB RAMP (TY 7)
  - ⑩ 15" CONC FAST TRACK
  - ⑪ CURB RAMP (TY 1)
  - ⑫ RIPRAP (CONC) (CL B) (TINT)
  - (X) TYPICAL SECTION NUMBER
  - (X) DRIVEWAY SUMMARY
  - (CURVE) HORIZONTAL CURVE NUMBER
  - ← DIRECTION OF TRAFFIC
  - LIMITS OF FAST TRACK PAVEMENT

- NOTES:**
- SEE HORIZONTAL ALIGNMENT DATA SHEET FOR ALL BASELINE AND CURVE DATA
  - FOR SODDING LIMITS SEE TYPICAL SECTIONS
  - STATIONS & OFFSETS TO C OF KINGWOOD DRIVE UNLESS OTHERWISE NOTED.



100% SUBMITTAL

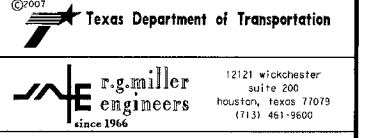
DOCUMENT INCOMPLETE: Not intended for permit, bidding, or construction.

Engineer: RICARDO J. VILLAGRAND

P.E. Serial No: 90339

Date: MAY 28, 2007

DATE	BY	REV	REVISION



LOOP 494  
KINGWOOD DRIVE  
PLAN AND PROFILE

SHEET 1 OF 1

PROJ. NO. 6	PROJECT NO.	SHEET NO. 98
DES.: RJV	STATE: TEXAS	DIST.: HOU
CHK.: RJV	COUNTY: MONTGOMERY, ETC.	
DWN.: TP	CONT. SECT. JOB NO.	
CHK.: JRG	0177-14-010, ETC.	LOOP 494

1:06:30 PM  
 11/6/2007  
 p:\transportation\houston\evergreen\loop494\2910\dgn\rgme\494r.p08.dgn

p:\transportation\houston\evergreen\loop494\2910\dgn\rgme\494r.p08.dgn