

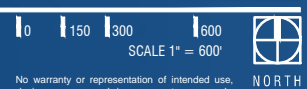
TOWNE LAKE

Greenhouse Rd.

Greenhouse and Mound Roads at US 290

EHRA JOB NO. 061-059-00-155

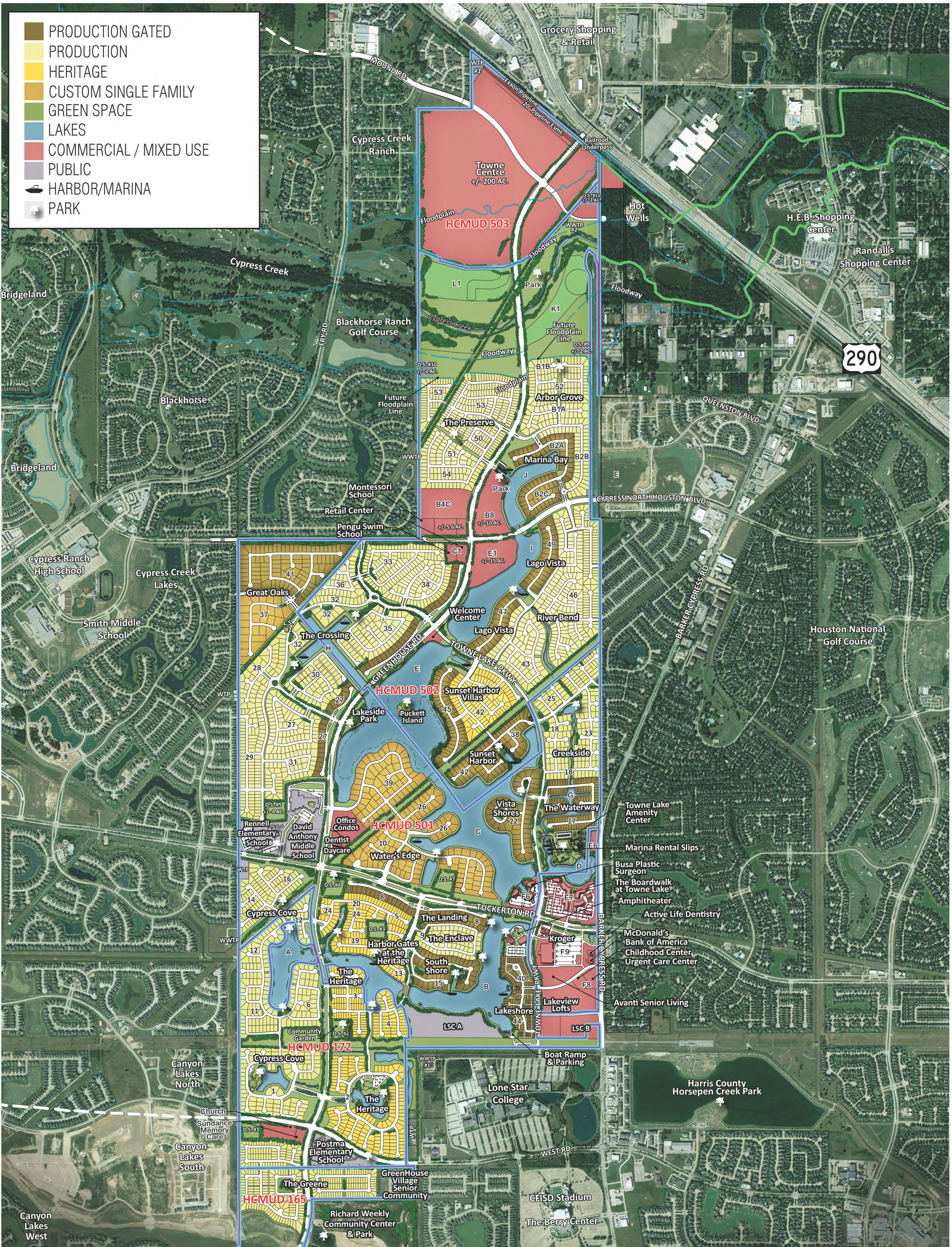
October 24, 2018



No warranty or representation of intended use, design or proposed improvements are made herein. All Plans for land or facilities are subject to change without notice.



10555 Westoffice Drive
Houston, Texas 77042
713.784.4500
EHRAinc.com
TYPE No. F726



Towne Lake



Development Master Plan /MUD Lake Map

A Master Planned Community located in Northwest Harris County, Texas

October 16, 2018

10 1200 1400 1600 1800

SCALE: 1"=300'



10555 Westoffice Drive
Houston, Texas 77042
713.784.4500
EHRAinc.com

NO WARRANTY OR REPRESENTATION OF INTENDED USE, DESIGN, OR PROPOSED IMPROVEMENTS ARE MADE HEREIN. ALL PLANS FOR LAND OR FACILITIES ARE SUBJECT TO CHANGE WITHOUT NOTICE.