

Houston-Galveston Area Council



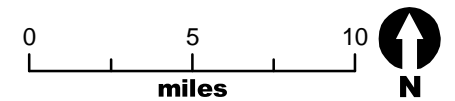
Pedestrian and Bicycle Special Districts Study

Brazoria County Districts By Score

- Highways
- Secondary Roads
- Water
- County Boundary

Score

- 3 - 16
- 6 - 2
- 16 - -7
- 27 - -17
- 48 - -28



WALTER MOORE

ENGINEERS + CONSULTANTS

in association with

Gulf Coast Institute

Euclid Studio

Lorin Gaertner

Transight, LLC

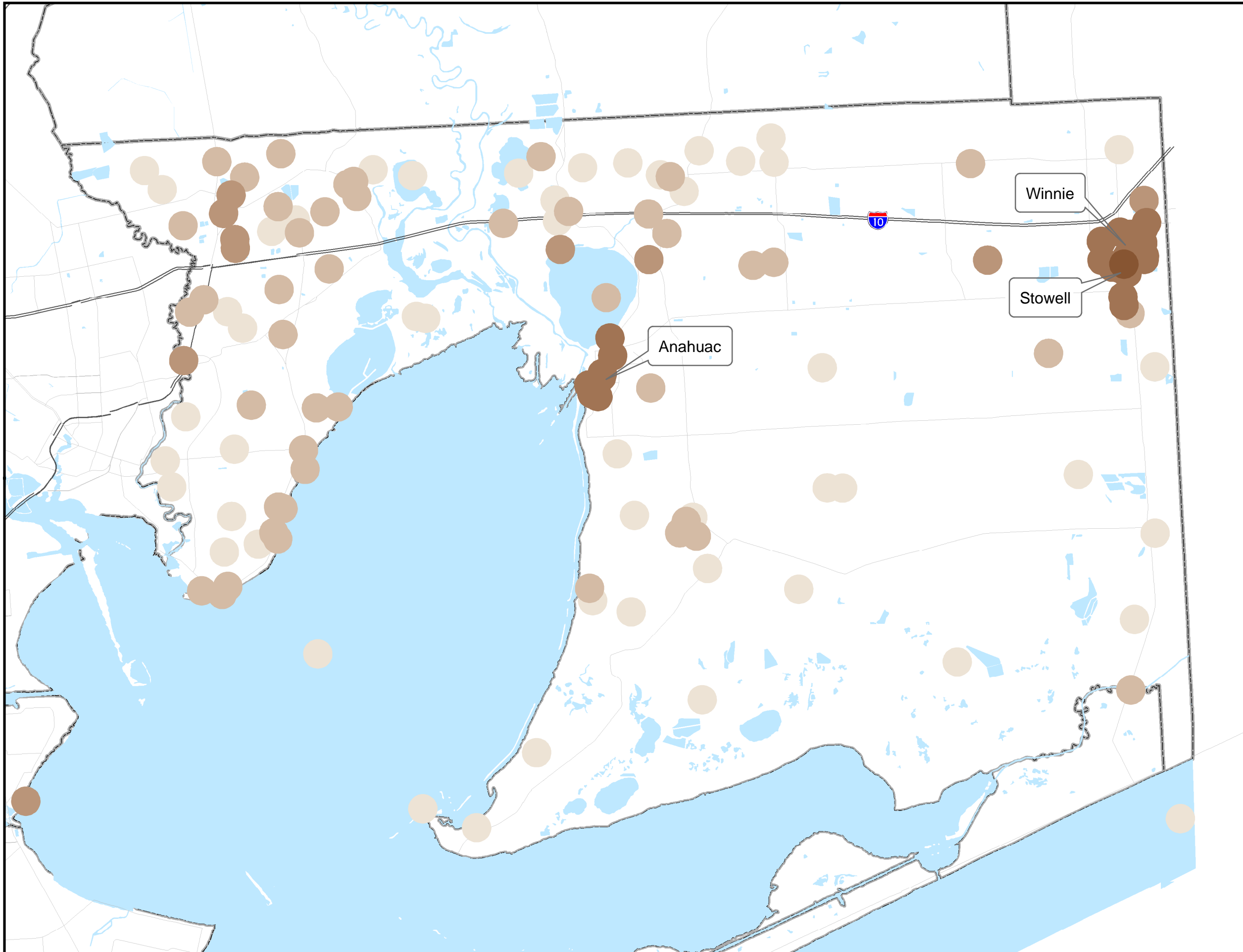
Walkable Communities, Inc.

Houston-Galveston Area Council



Pedestrian and Bicycle Special Districts Study

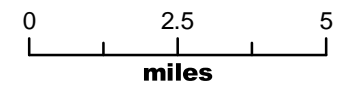
Chambers County Districts By Score



- Highways
- Secondary Roads
- Water
- County Boundary

Score

- 1 - 6
- 6 - 0
- 15 - -7
- 25 - -16
- 51 - -26



WALTER MOORE

ENGINEERS + CONSULTANTS

in association with

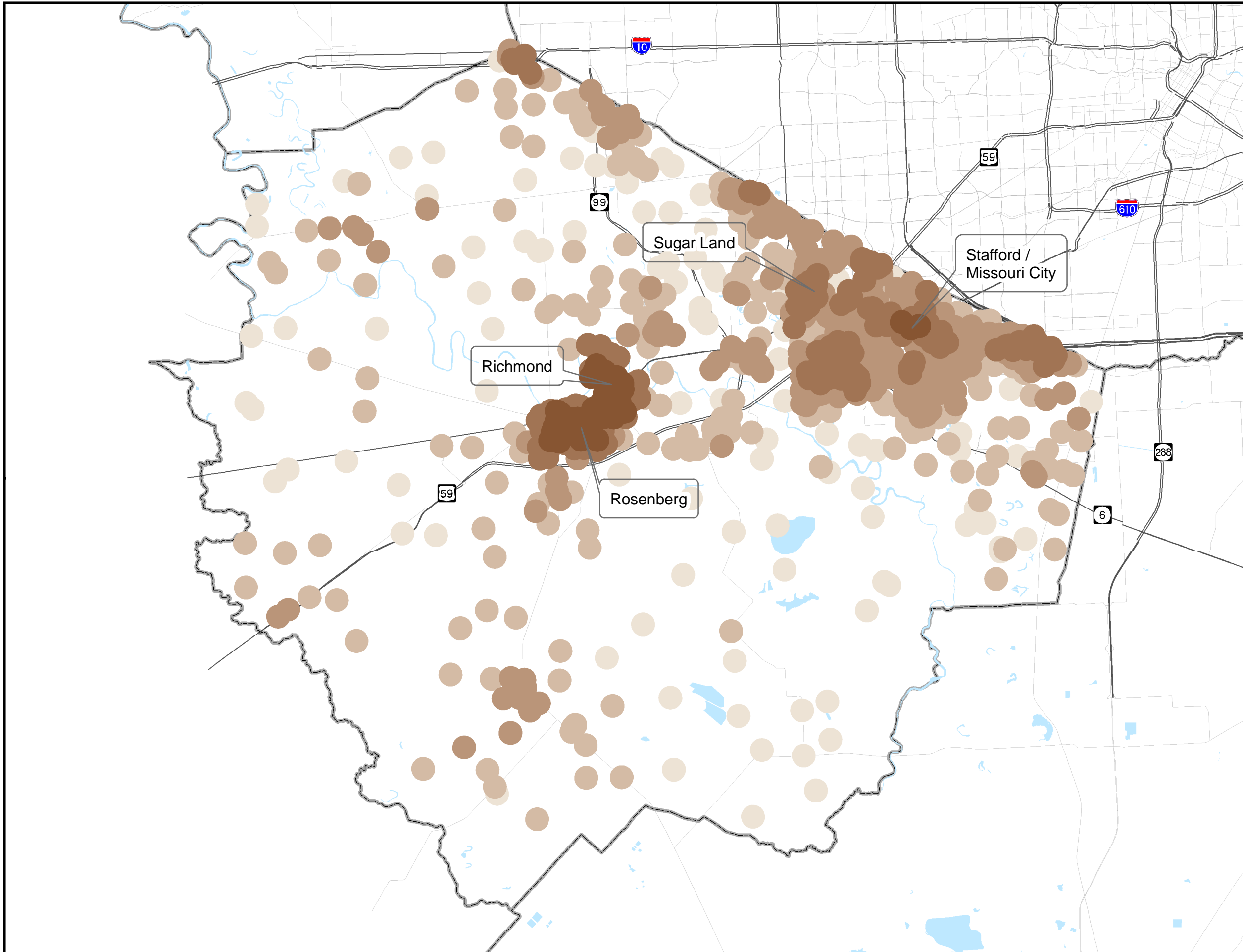
- Gulf Coast Institute
- Euclid Studio
- Lorin Gaertner
- Transight, LLC
- Walkable Communities, Inc.

Houston-Galveston Area Council



Pedestrian and Bicycle Special Districts Study

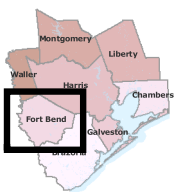
Fort Bend County Districts By Score



- Highways
- Secondary Roads
- Water
- County Boundary

Score

- 8 - 20
- 2 - 7
- 10 - -3
- 18 - -11
- 38 - -19



WALTER MOORE

ENGINEERS + CONSULTANTS

in association with

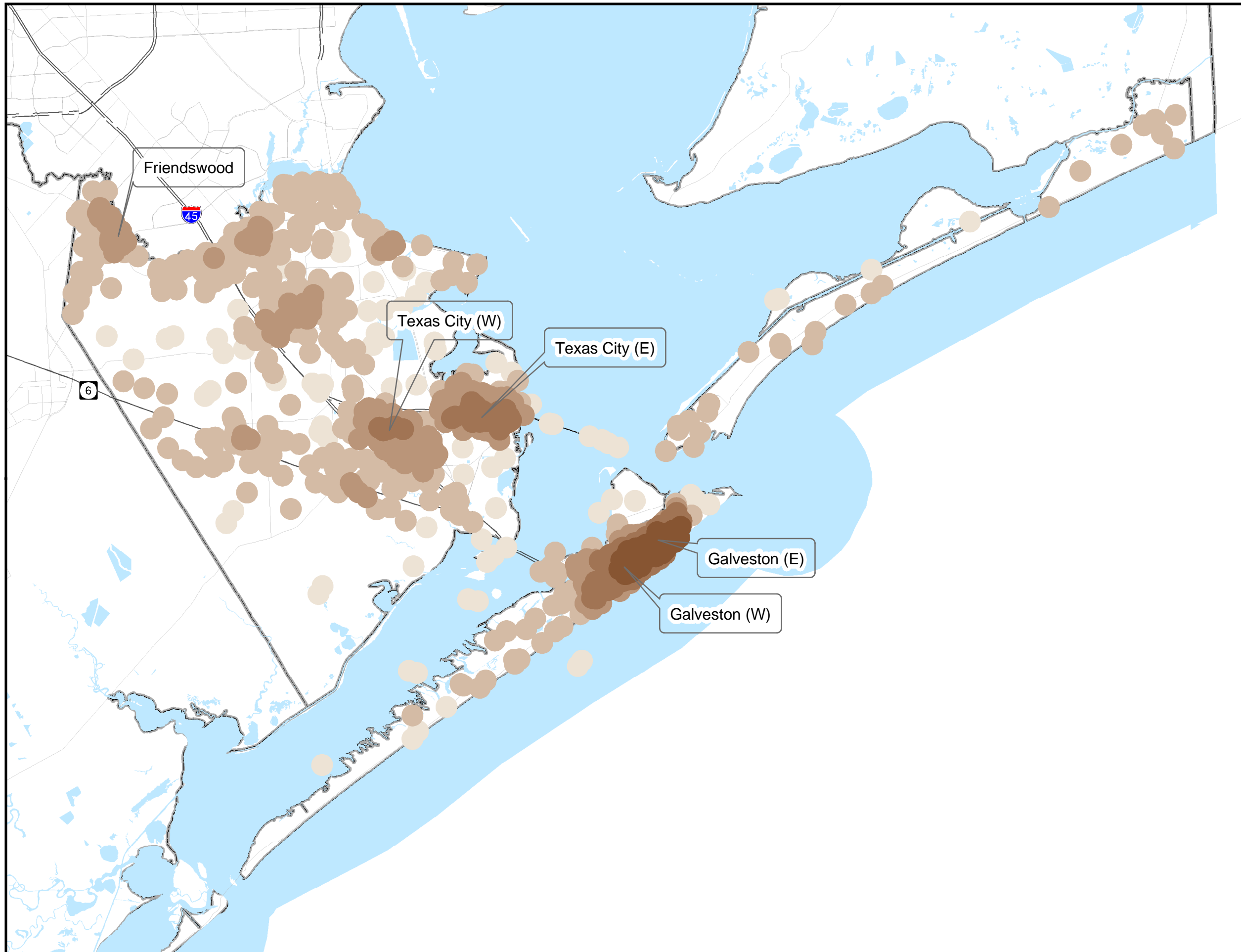
Gulf Coast Institute

Euclid Studio

Lorin Gaertner

Transight, LLC

Walkable Communities, Inc.



Houston-Galveston Area Council



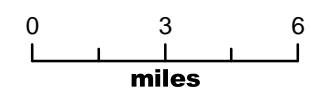
Pedestrian and Bicycle Special Districts Study

Galveston County Districts By Score

- Highways
- Secondary Roads
- Water
- County Boundary

Score

- 28 - 49
- 10 - 27
- 0 - 9
- 17 - -1
- 50 - -18



WALTER MOORE

ENGINEERS + CONSULTANTS

in association with

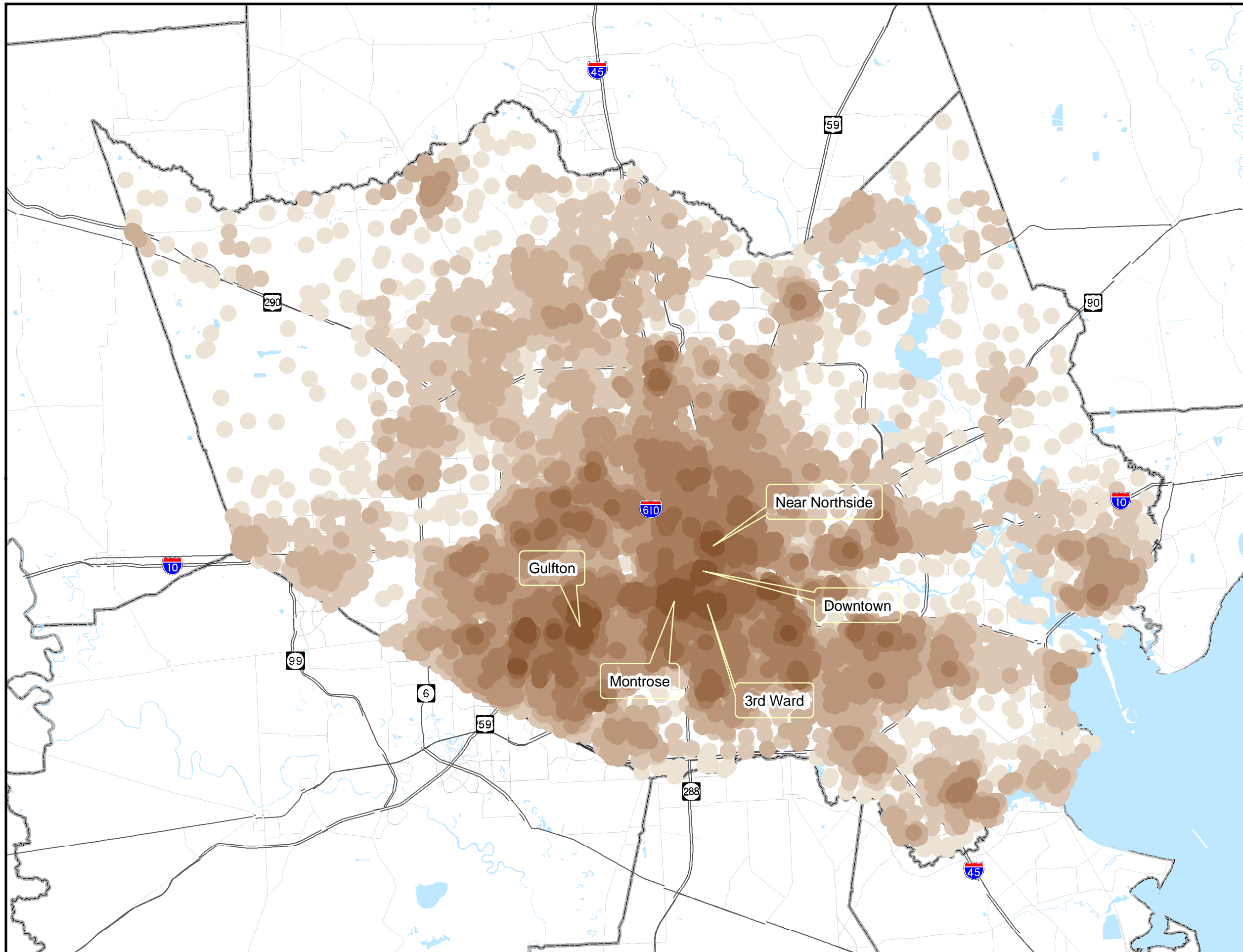
- Gulf Coast Institute
- Euclid Studio
- Lorin Gaertner
- Transight, LLC
- Walkable Communities, Inc.

Houston-Galveston Area Council



Pedestrian and Bicycle Special Districts Study

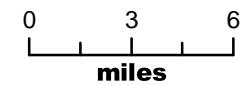
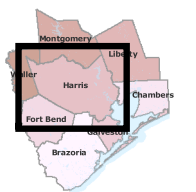
Harris County Districts By Score



- Highways
- Secondary Roads
- Water
- County Boundary

Score

- 41 - 80
- 26 - 40
- 15 - 25
- 6 - 14
- 3 - 5
- 14 - -4
- 51 - -15



WALTER MOORE

ENGINEERS + CONSULTANTS

in association with

Gulf Coast Institute

Euclid Studio

Lorin Gaertner

Transight, LLC

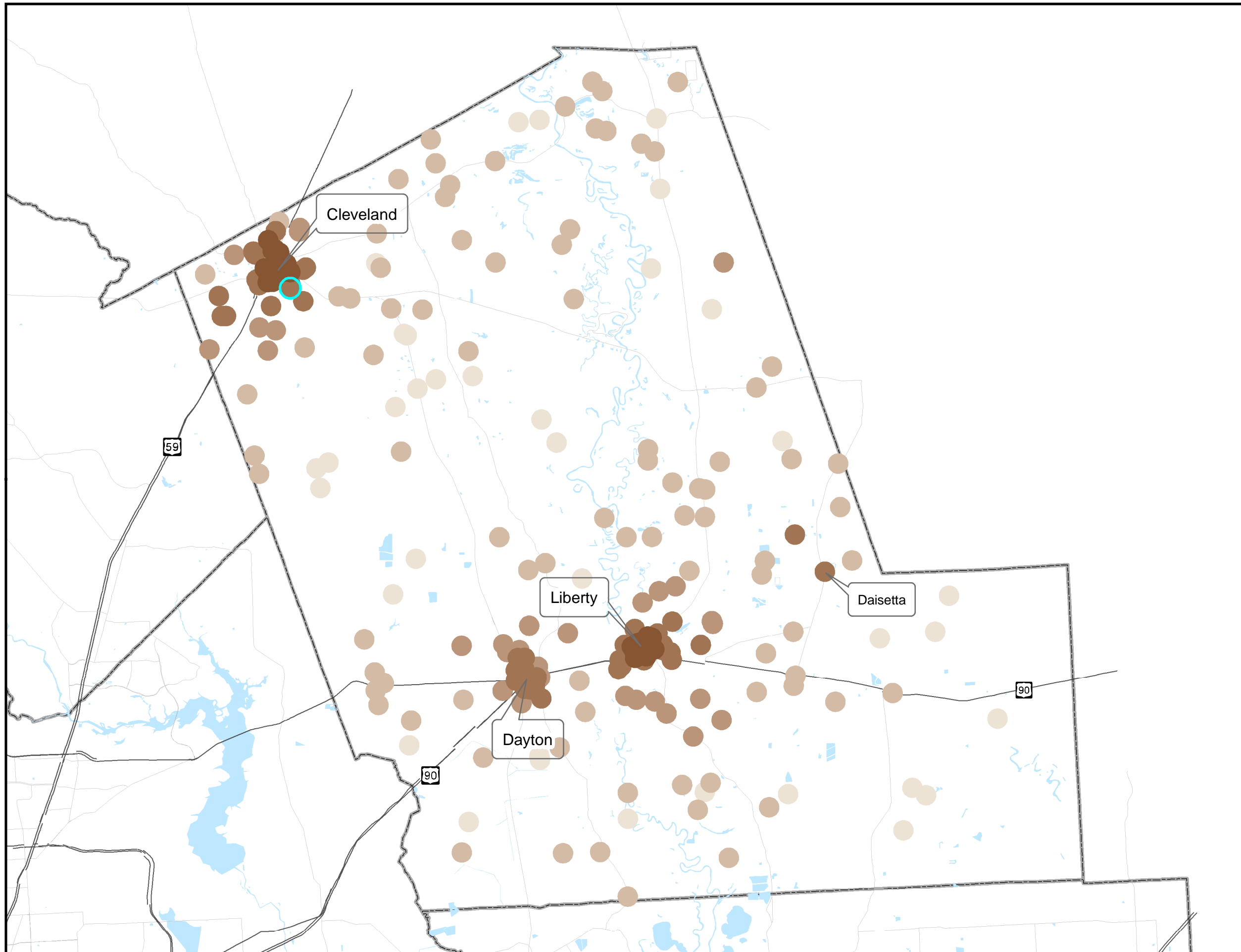
Walkable Communities, Inc.

Houston-Galveston Area Council



Pedestrian and Bicycle Special Districts Study

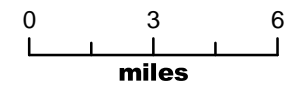
Liberty County Districts By Score



- Highways
- Secondary Roads
- Water
- County Boundary

Score

- 1 - 10
- 7 - 0
- 16 - -8
- 28 - -17
- 42 - -29



WALTER MOORE

ENGINEERS + CONSULTANTS

in association with

Gulf Coast Institute

Euclid Studio

Lorin Gaertner

Transight, LLC

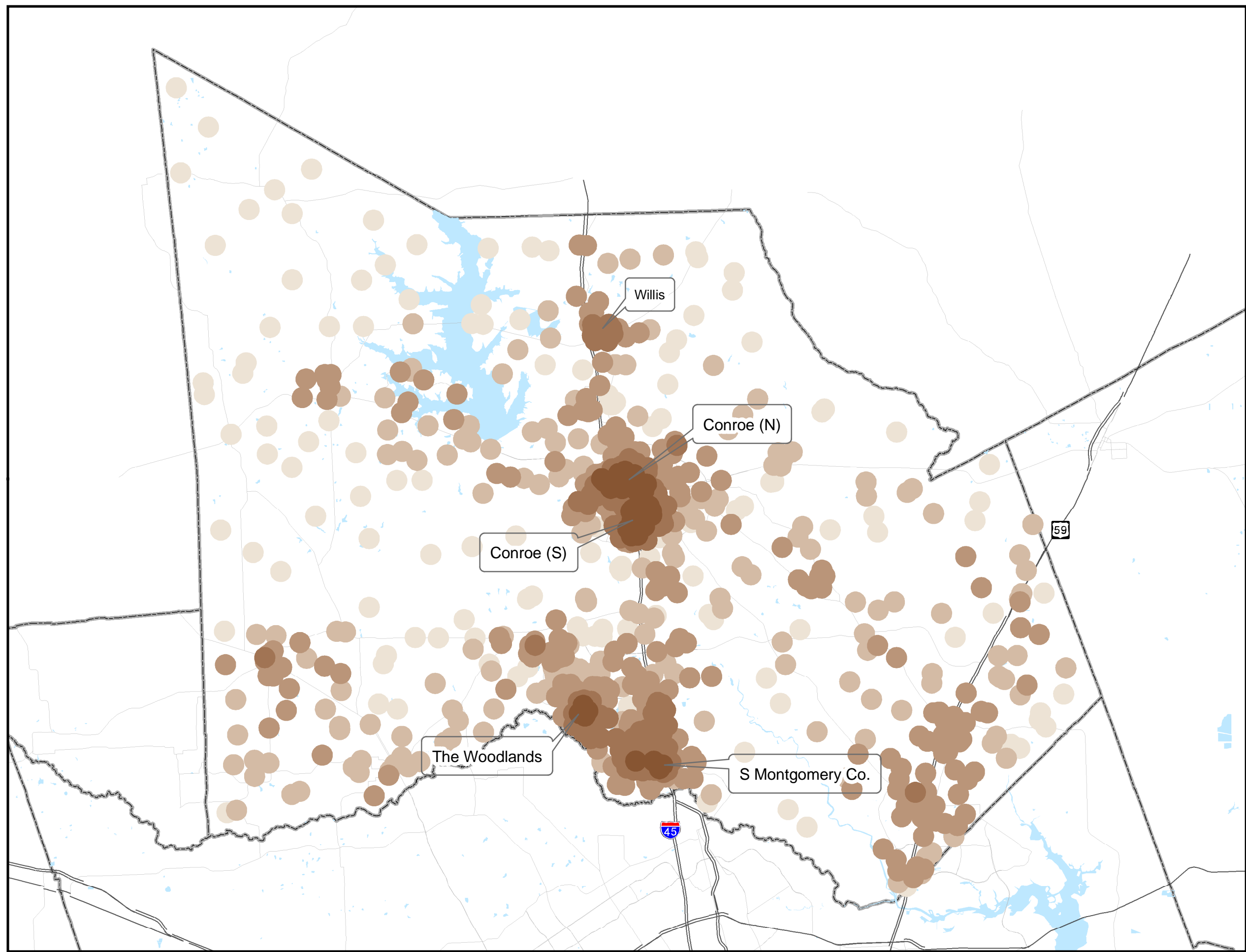
Walkable Communities, Inc.

Houston-Galveston Area Council



Pedestrian and Bicycle Special Districts Study

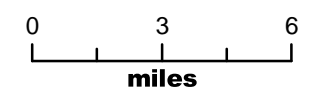
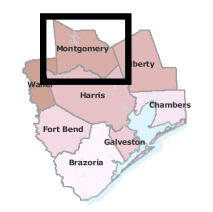
Montgomery County Districts By Score



— Highways
 — Secondary Roads
 Water
 County Boundary

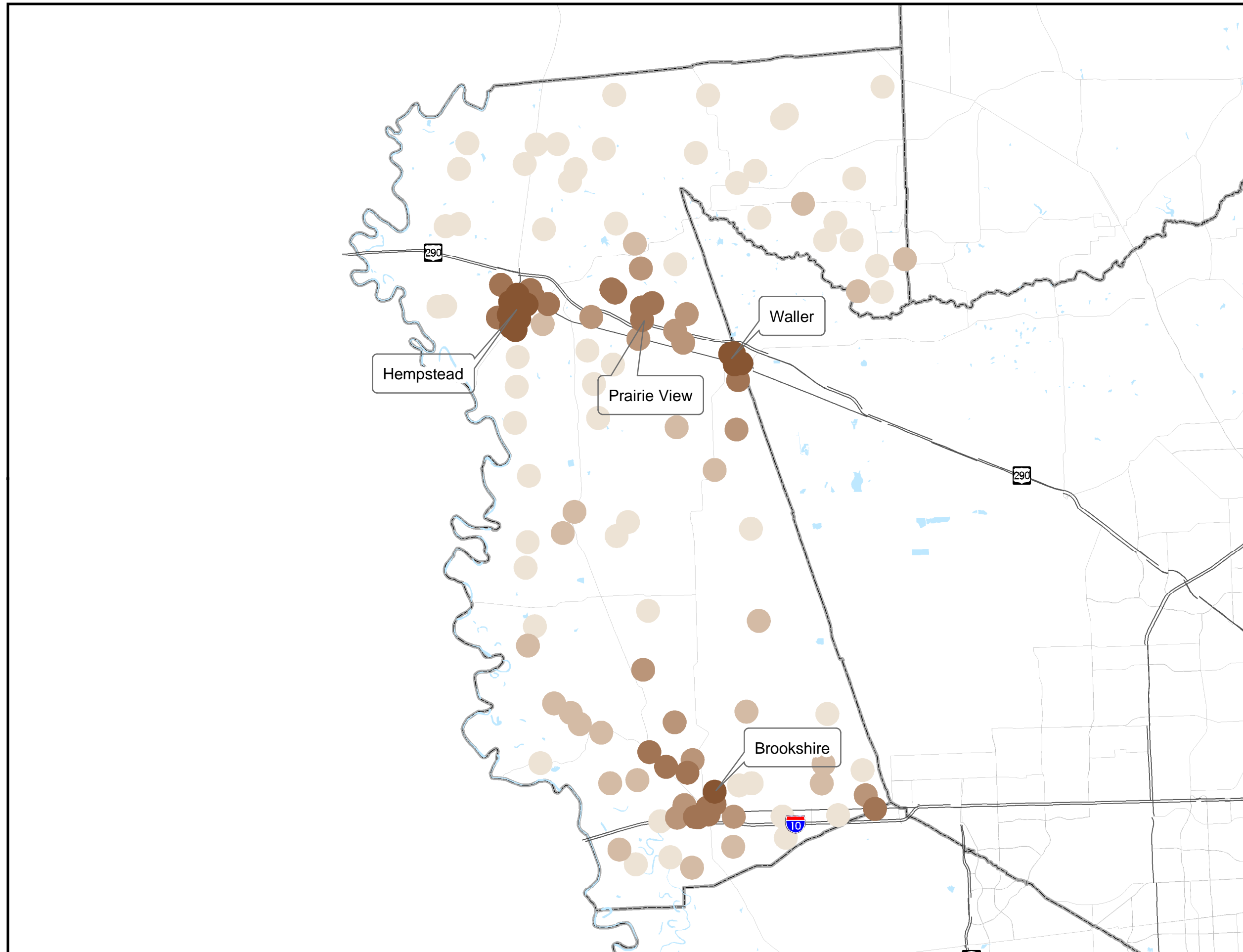
Score

- 6 - 15
- 2 - 5
- 9 - -3
- 16 - -10
- 43 - -17



WALTER MOORE
 ENGINEERS + CONSULTANTS
 in association with

Gulf Coast Institute
Euclid Studio
Lorin Gaertner
Transight, LLC
Walkable Communities, Inc.



Houston-Galveston Area Council



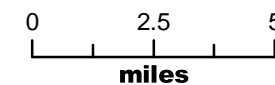
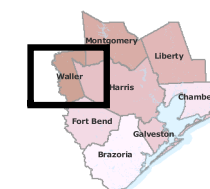
Pedestrian and Bicycle Special Districts Study

Waller County Districts By Score

- Highways
- Secondary Roads
- Water
- County Boundary

Score

- 1 - 6
- 9 - 0
- 15 - -10
- 20 - -16
- 34 - -21



WALTER MOORE

ENGINEERS + CONSULTANTS

in association with

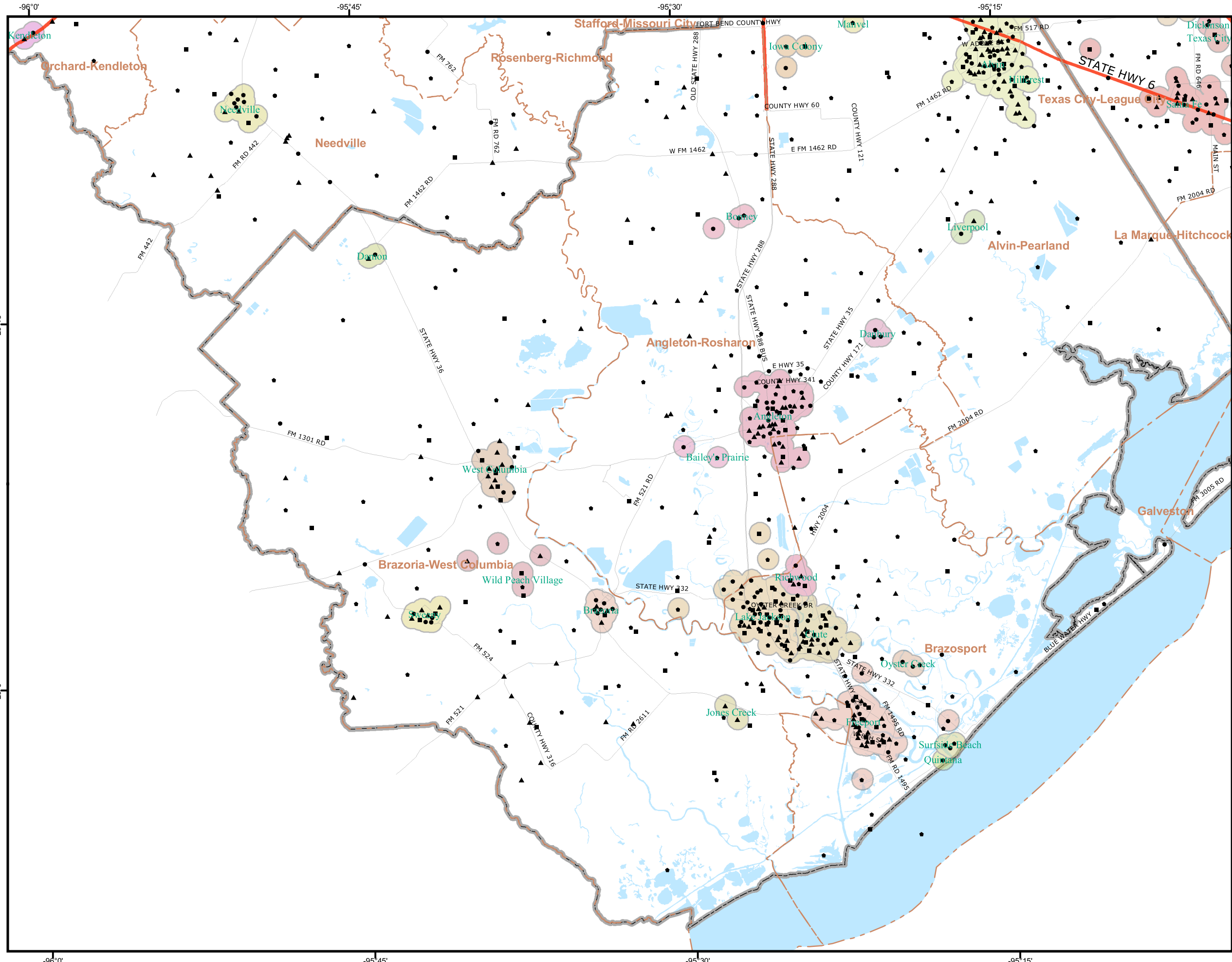
Gulf Coast Institute

Euclid Studio

Lorin Gaertner

Transight, LLC

Walkable Communities, Inc.



Houston-Galveston Area Council
Pedestrian and Bicycle Special Districts Study

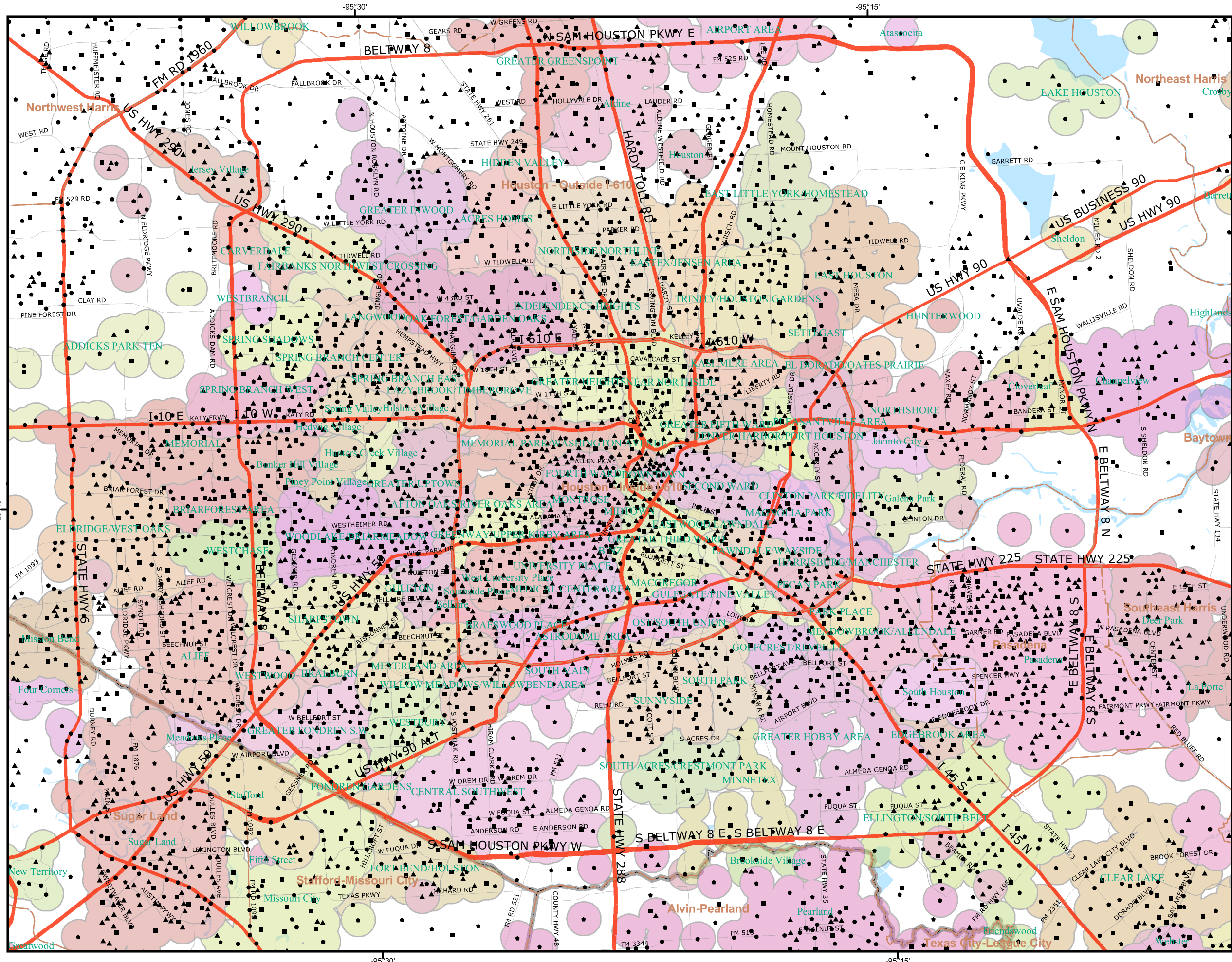
District Centers
 (Brazoria)

Centers assigned to non-rural neighborhoods are shown with a half-mile buffer, colored and labeled according to the neighborhood assigned.

- Highways
- Secondary Roads
- County Subdivisions
- County Boundary
- District Centers**
- Attractor
- Employer
- Block Grp Cent.
- TAZ Cent.
- Water



WALTER MOORE
 ENGINEERS + CONSULTANTS
 in association with
Gulf Coast Institute
Euclid Studio
Lorin Gaertner
Transight, LLC
Walkable Communities, Inc.



Houston-Galveston Area Council



Pedestrian and Bicycle Special Districts Study

District Centers
(Central)

Centers assigned to non-rural neighborhoods are shown with a half-mile buffer, colored and labeled according to the neighborhood assigned.

- Highways
- Secondary Roads
- County Subdivisions
- County Boundary

District Centers

- Attractor
- Employer
- Block Grp Cent.
- TAZ Cent.
- Water



WALTER MOORE

ENGINEERS + CONSULTANTS
in association with

- Gulf Coast Institute**
- Euclid Studio**
- Lorin Gaertner**
- Transight, LLC**
- Walkable Communities, Inc.**

Houston-Galveston Area Council

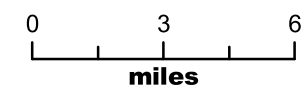
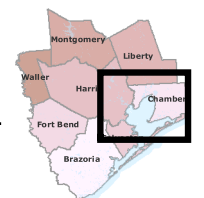


Pedestrian and Bicycle Special Districts Study

District Centers
(Chambers)

Centers assigned to non-rural neighborhoods are shown with a half-mile buffer, colored and labeled according to the neighborhood assigned.

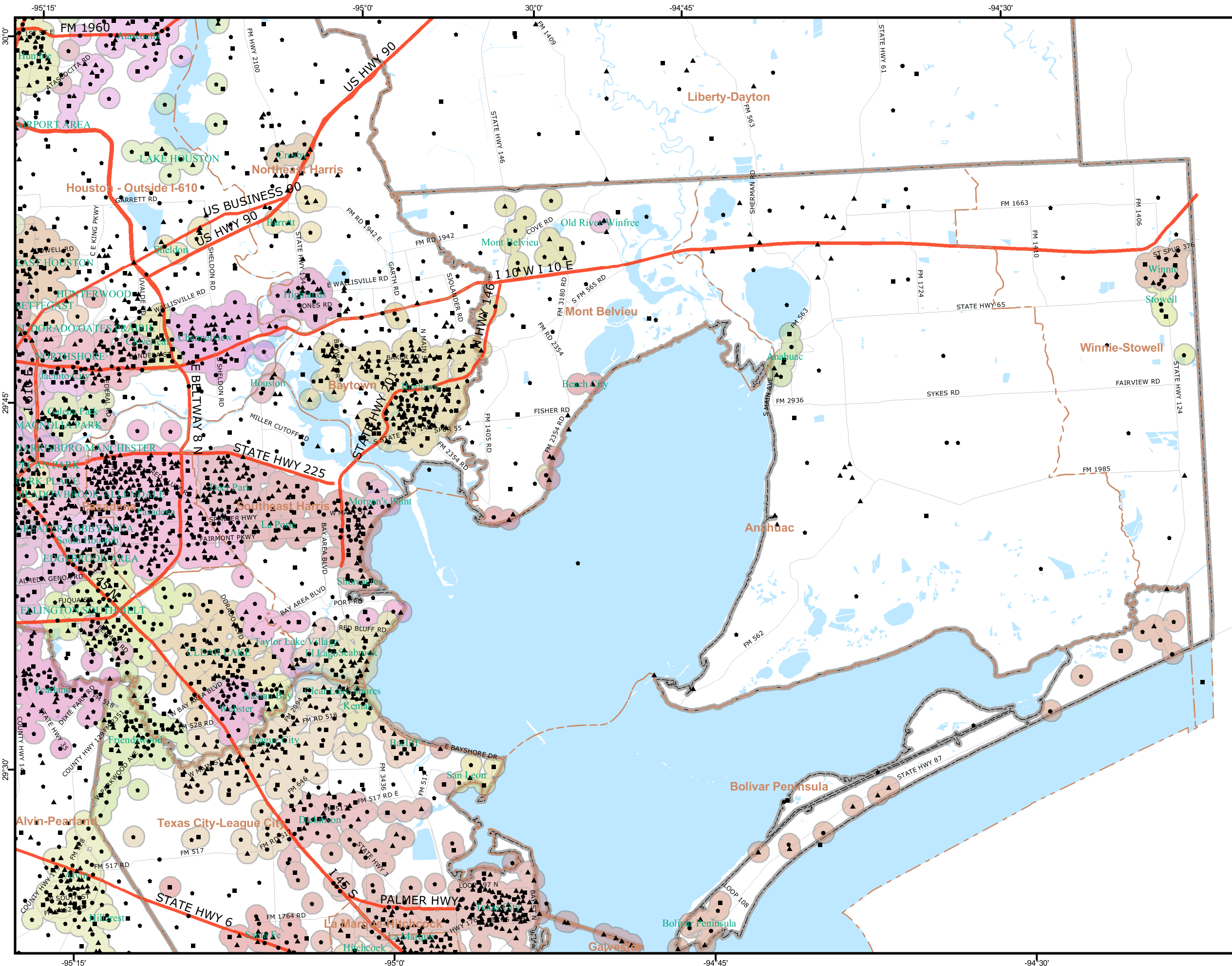
- Highways
- Secondary Roads
- County Subdivisions
- County Boundary
- District Centers**
- Attractor
- Employer
- Block Grp Cent.
- TAZ Cent.
- Water



WALTER MOORE

ENGINEERS + CONSULTANTS
in association with

- Gulf Coast Institute
- Euclid Studio
- Lorin Gaertner
- Transight, LLC
- Walkable Communities, Inc.



Houston-Galveston Area Council



Pedestrian and Bicycle Special Districts Study

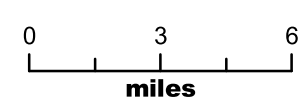
District Centers
(Fort Bend & West Harris)

Centers assigned to non-rural neighborhoods are shown with a half-mile buffer, colored and labeled according to the neighborhood assigned.

- Highways
- Secondary Roads
- County Subdivisions
- County Boundary

District Centers

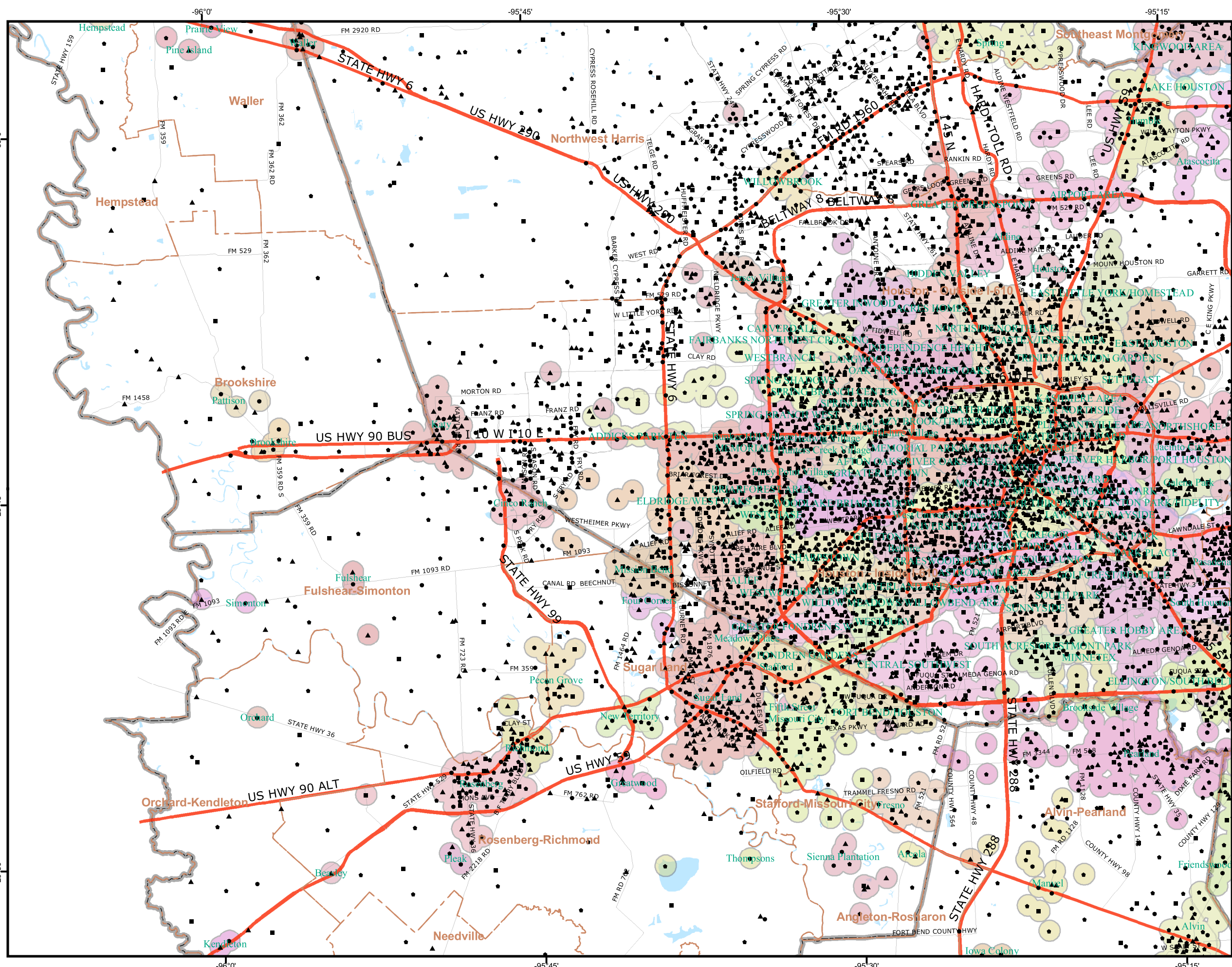
- Attractor
- Employer
- Block Grp Cent.
- TAZ Cent.
- Water

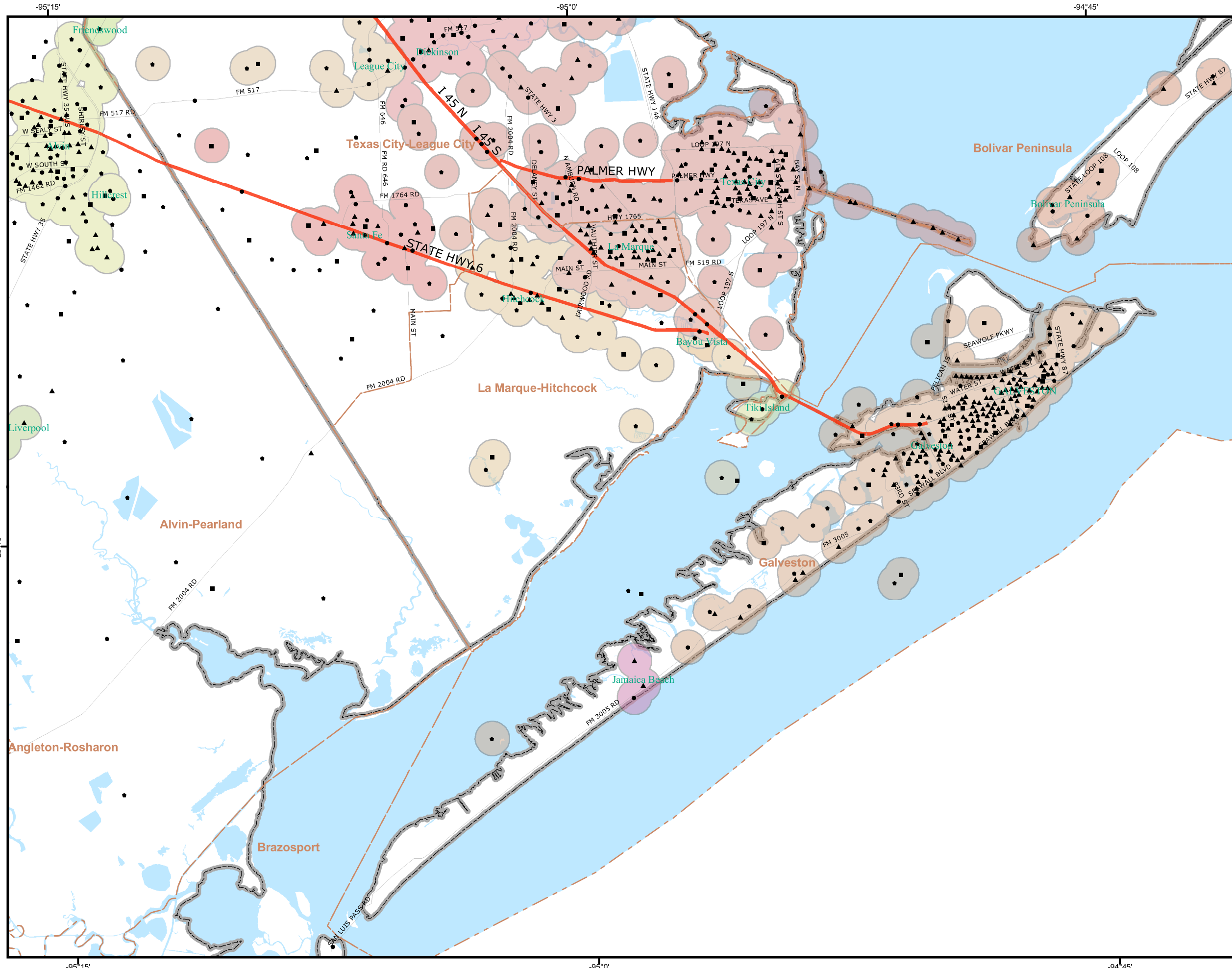


WALTER MOORE

ENGINEERS + CONSULTANTS
in association with

- Gulf Coast Institute
- Euclid Studio
- Lorin Gaertner
- Transight, LLC
- Walkable Communities, Inc.





Houston-Galveston Area Council

Pedestrian and Bicycle Special Districts Study

District Centers
(Galveston)

Centers assigned to non-rural neighborhoods are shown with a half-mile buffer, colored and labeled according to the neighborhood assigned.

- Highways
- Secondary Roads
- County Subdivisions
- County Boundary
- District Centers**
 - Attractor
 - Employer
 - Block Grp Cent.
 - TAZ Cent.
- Water



WALTER MOORE
ENGINEERS + CONSULTANTS
in association with
Gulf Coast Institute
Euclid Studio
Lorin Gaertner
Transight, LLC
Walkable Communities, Inc.

Houston-Galveston Area Council

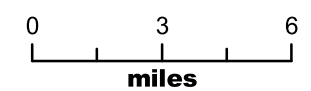


Pedestrian and Bicycle Special Districts Study

District Centers (Liberty)

Centers assigned to non-rural neighborhoods are shown with a half-mile buffer, colored and labeled according to the neighborhood assigned.

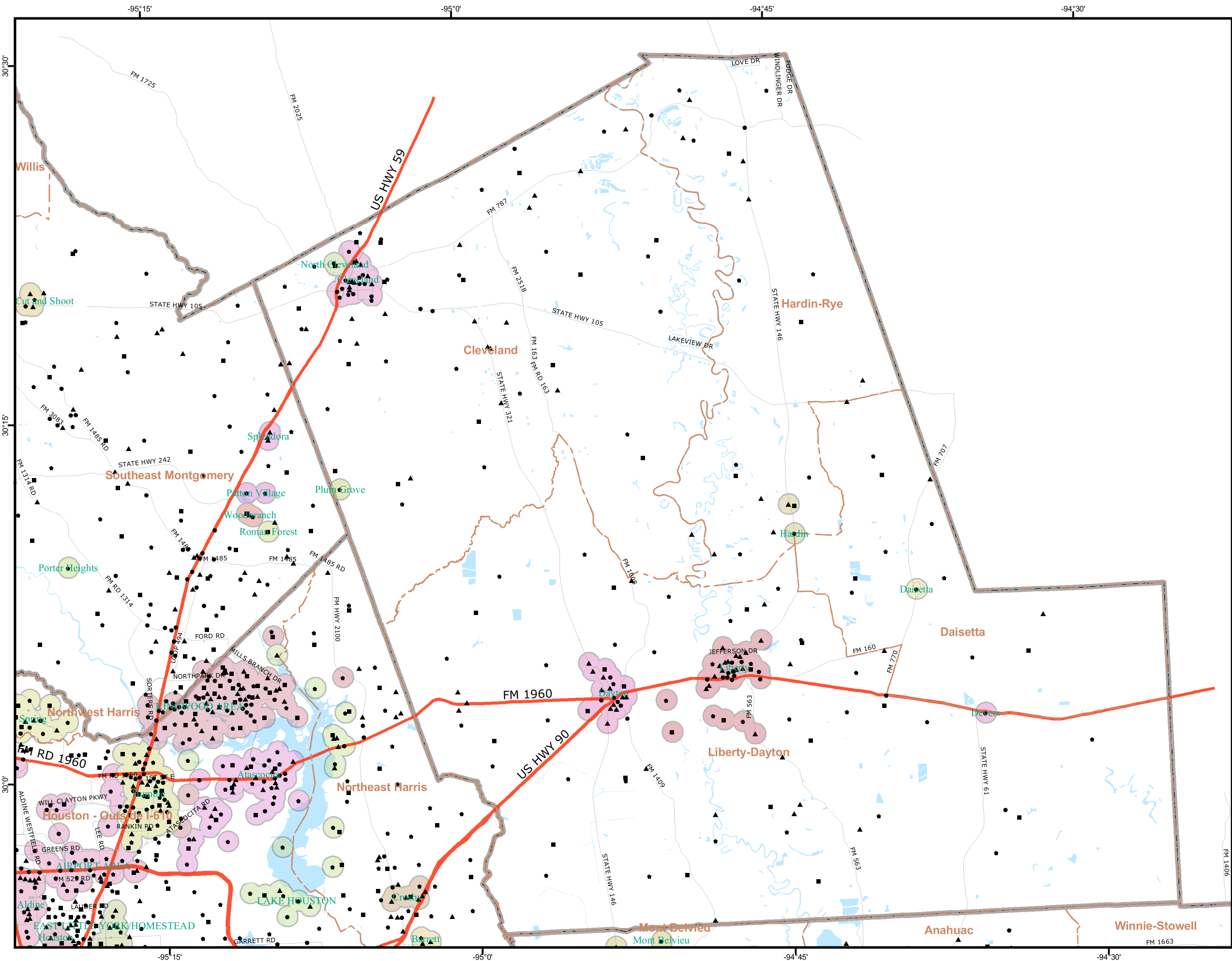
- Highways
- Secondary Roads
- County Subdivisions
- County Boundary
- District Centers**
 - Attractor
 - Employer
 - Block Grp Cent.
 - TAZ Cent.
 - Water



WALTER MOORE

ENGINEERS + CONSULTANTS
in association with

- Gulf Coast Institute
- Euclid Studio
- Lorin Gaertner
- Transight, LLC
- Walkable Communities, Inc.



Houston-Galveston Area Council



Pedestrian and Bicycle Special Districts Study

District Centers
(Montgomery)

Centers assigned to non-rural neighborhoods are shown with a half-mile buffer, colored and labeled according to the neighborhood assigned.

- Highways
 - Secondary Roads
 - County Subdivisions
 - County Boundary
- District Centers**
- Attractor
 - Employer
 - Block Grp Cent.
 - TAZ Cent.
 - Water



WALTER MOORE

ENGINEERS + CONSULTANTS

in association with

- Gulf Coast Institute**
- Euclid Studio**
- Lorin Gaertner**
- Transight, LLC**
- Walkable Communities, Inc.**

