

H-GAC Regional Growth Forecast

2017 Release

- Data for years 2015 to 2045 at various geographic levels
- User-friendly mapping and query tools
- GIS data, maps, tables, charts, and documentation
- Updated annually each Spring

Population

Land Use

Employment

2015

6.5 Million Household Population

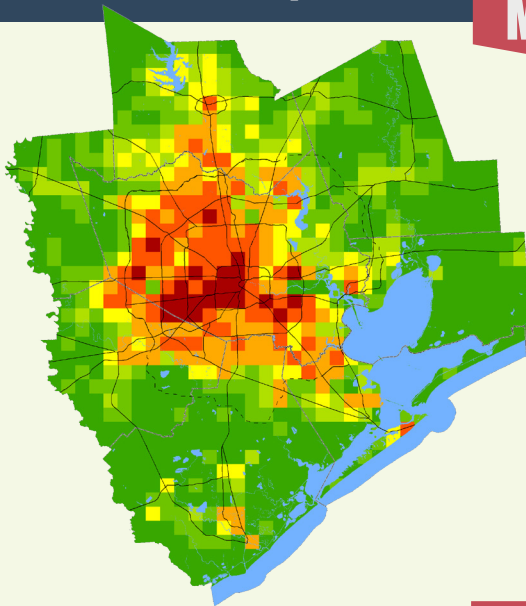
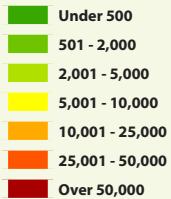
+

4.2 Million

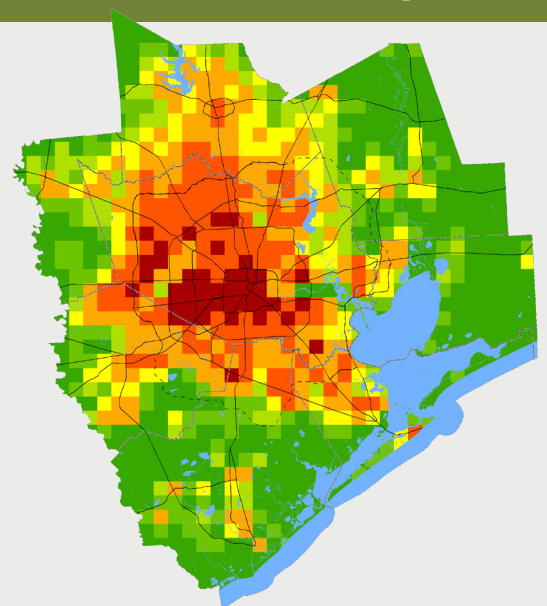
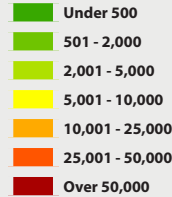
2045

10.8 Million Household Population

2015 Population



2045 Population



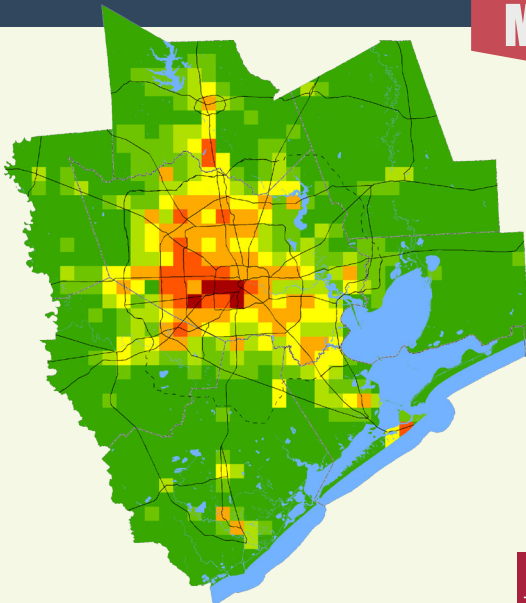
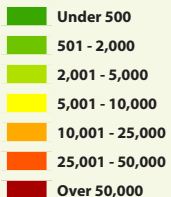
3.2 Million Jobs

+

1.6 Million

4.8 Million Jobs

2015 Jobs



2045 Jobs

