



Engagement should be a core value of all public universities.

Institute for Sustainable Communities



Discovery

Coordinate existing research strengths and make strategic investments



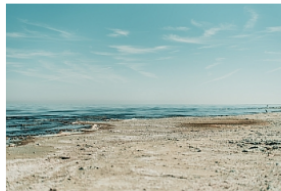
Engagement

Engage with communities to translate research to action



Education

Enhance and expand experiential education opportunities



Coastal Risk Reduction and Resilience

Seeks to provide solutions to today's most pressing coastal issues through holistic research that explores the interconnections of the natural, built, and socio-political environments.



Community Infrastructure

Focuses on creating innovative ways for addressing infrastructure problems and seeking novel solutions in local communities.



Health and Environment

Concentrates on improving environmental variables and understanding the interactions between individual level health outcomes and the built environment, health systems, and community level factors.



Water Security

This project targets key threats to water security, including poverty, climate change, governance and social marginalization, to better address the water security challenges in the coming years.



Community Resilience

The CoRe Program integrates community engagement and research on developing strategies to mitigate natural hazards within flood vulnerable neighborhoods to develop strategies to mitigate disasters.



TEXAS A&M UNIVERSITY
**Texas Target
Communities**

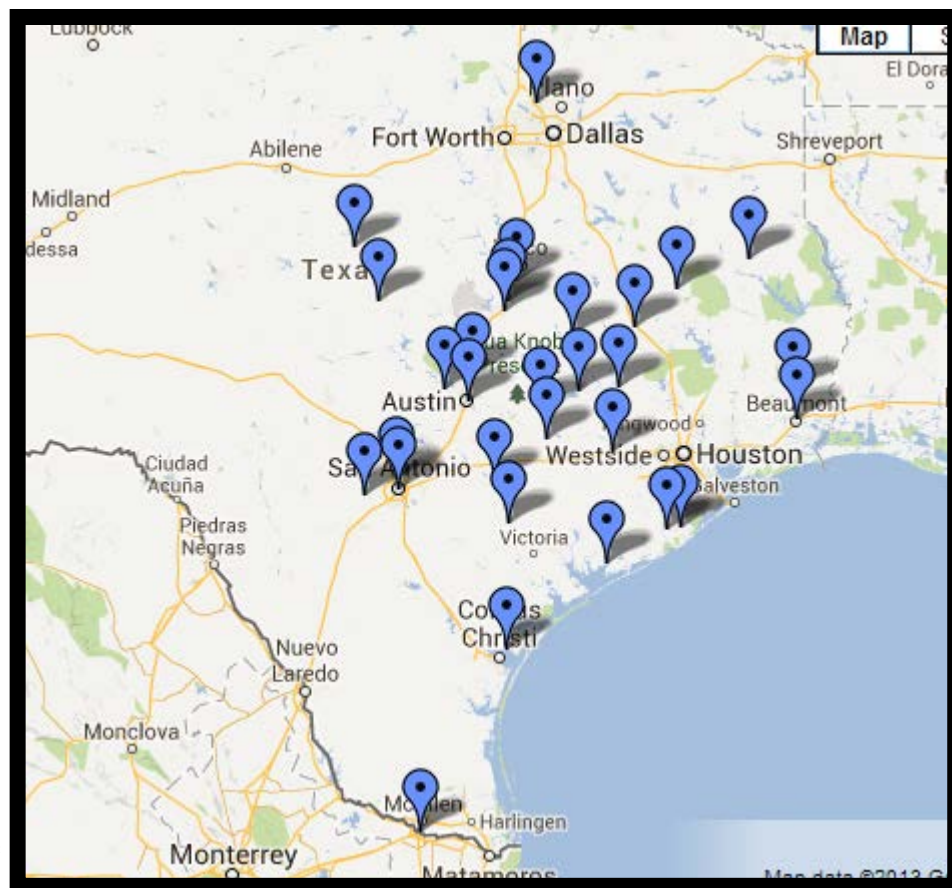
Texas Target Communities Program

- Since 1980
- Historically worked with:
 - Small Texas cities that could not afford consultants
 - For one year
- Typical projects:
 - planning students to develop comprehensive plans
 - studio classes to develop site plans



Texas Target Communities Program

- Over 50 communities
- Students awards under the supervision of faculty
 - Temple, 1988
 - Madisonville, 1989
 - Palacios, 2003
 - Navasota, 2004
 - Hearne, 2005
 - Texas Urban Triangle, 2008
 - Beaumont, 2009
 - Cuero, 2009
 - Sealy, 2010
 - Gonzales, 2013
 - La Grange, 2015
 - Sunnyside Neighborhood, 2017
 - Grimes County, 2017
 - Liberty County, 2017 *professional award*



OUR MISSION

A Holistic Approach

To facilitate the transformation of communities from high-risk/low-opportunity to equitable, resilient, and adaptive by mitigating the threats to the economy, environment, and culture



Increasing Community Capacity



SOCIAL
Strengthening the
community fabric



ECONOMIC
Fostering strategic
& equitable
growth



NATURAL
Preserving and
restoring the integrity
of our environmental
systems



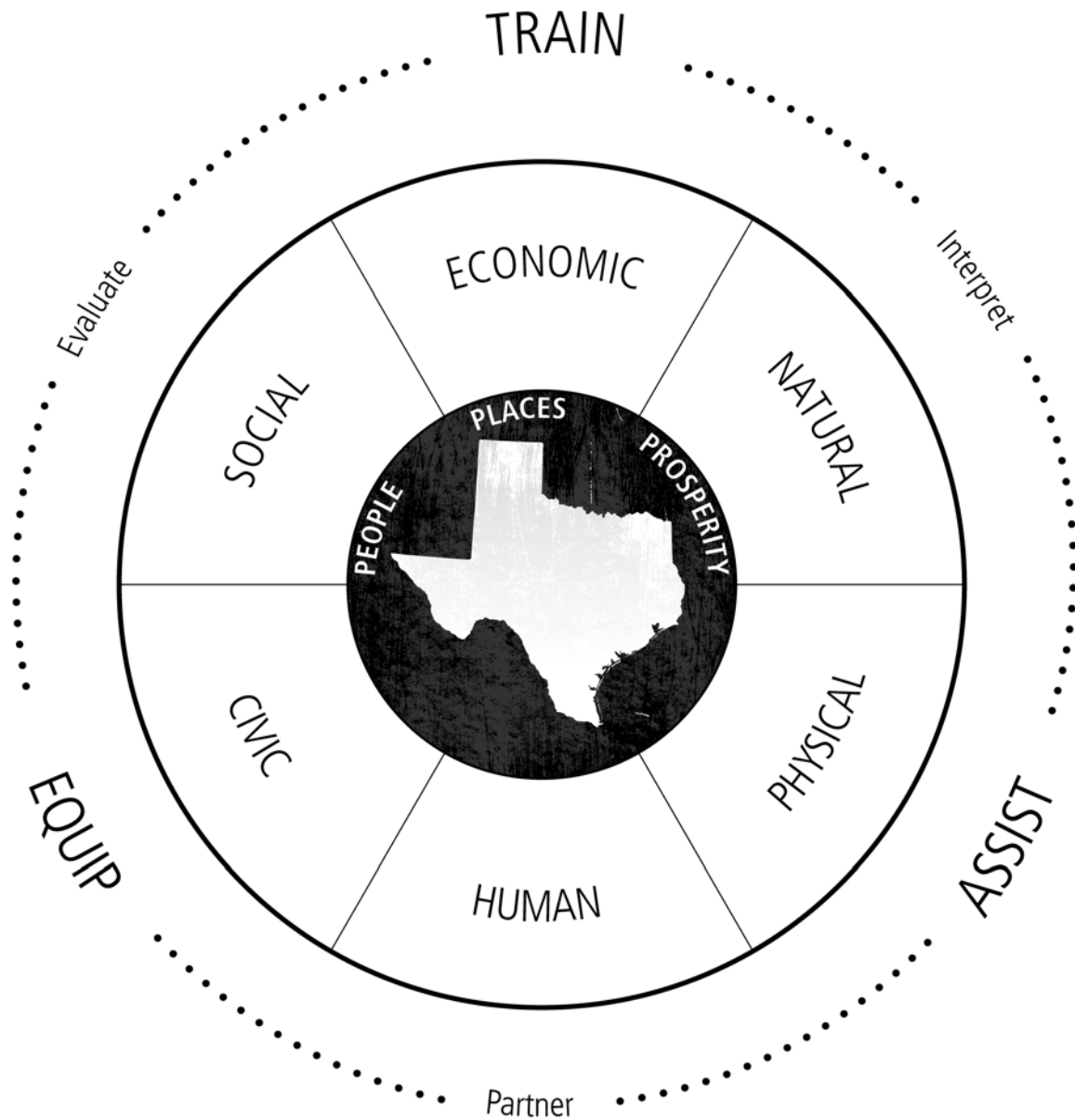
CIVIC
Encouraging
participatory and
collaborative
governance



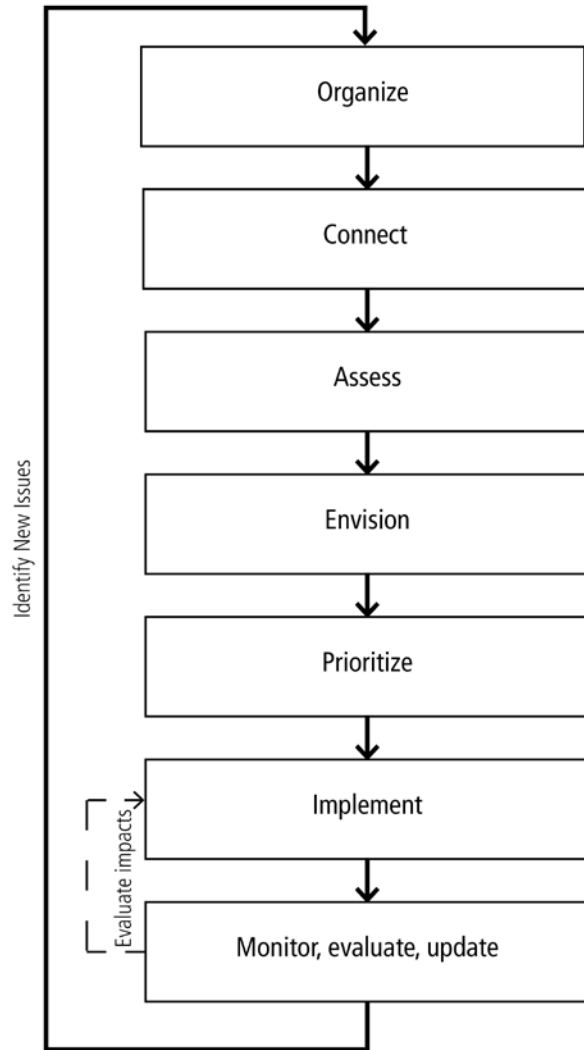
HUMAN
Nurturing the
capacity and
health of people



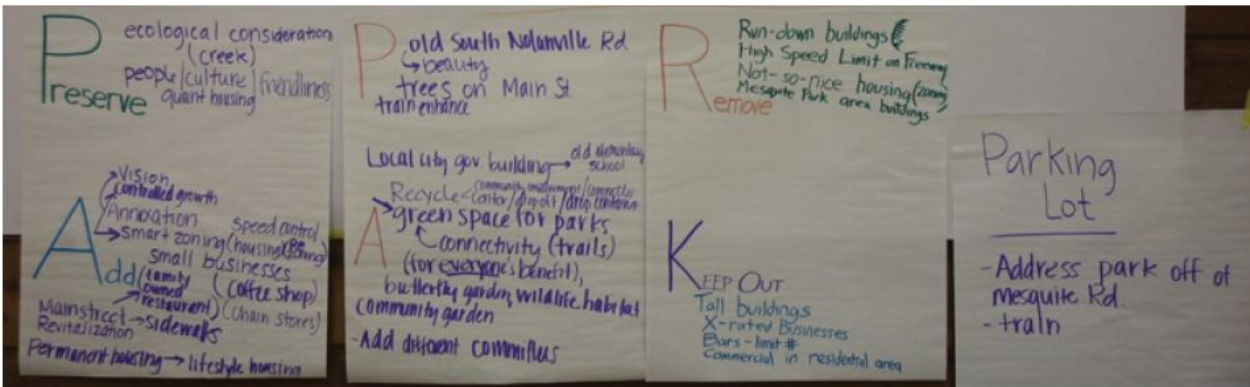
PHYSICAL
Promoting informed
development
decisions



Inclusive Plan Making Process



Community Engagement



What did community members want to preserve, add, remove, or keep out?



We strive to preserve our small town atmosphere while preparing for growth and future generations, to enhance the beautification of the city, embrace the diversity of its people, and improve the quality of life for our citizens. We aspire to be "A Great Place to Live."

Liberty County

Planning for Growth, Planning for Resilience



LIBERTY COUNTY

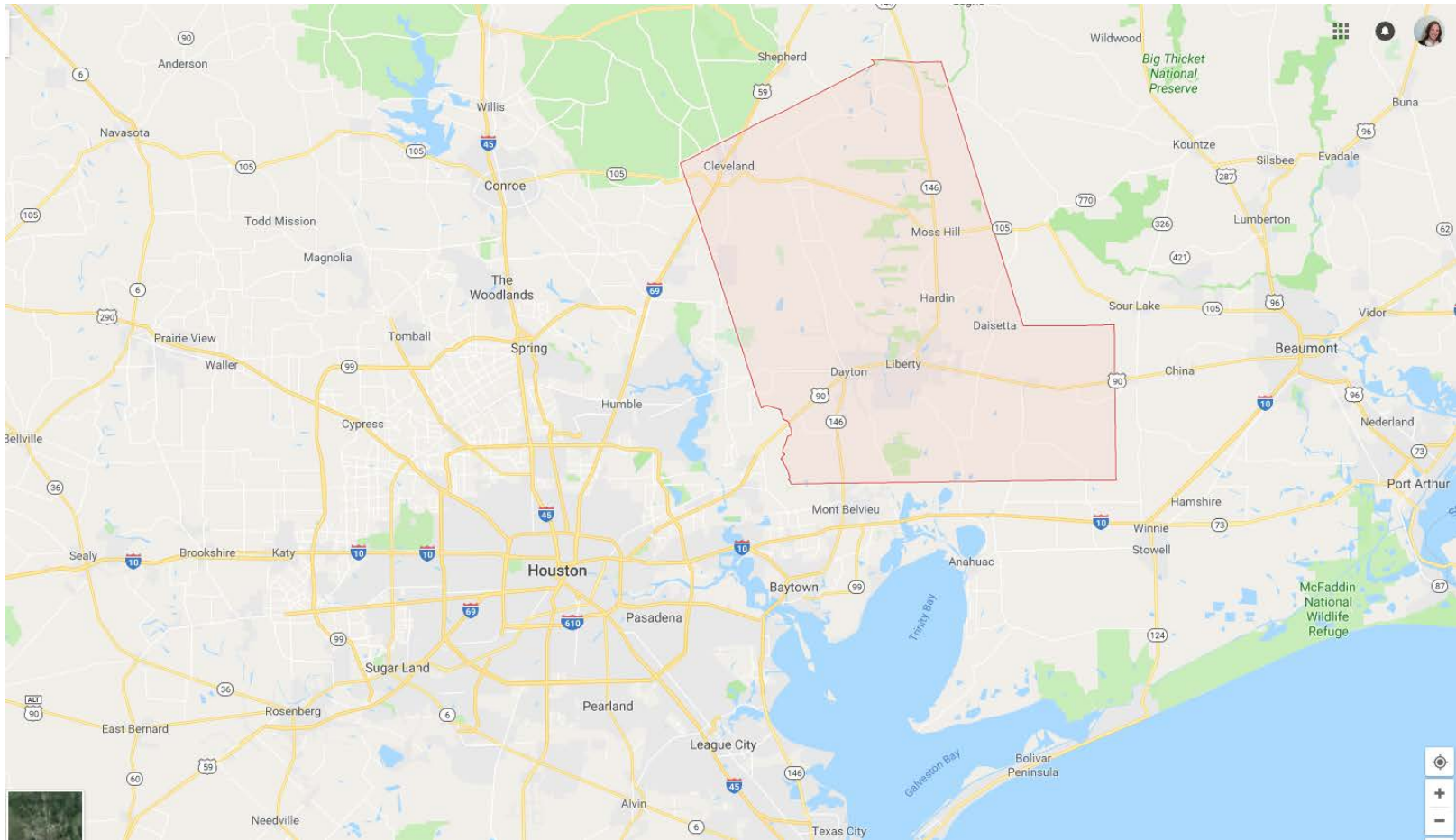
Strategic Plan 2016 - 2036

- 8 courses
- Urban planning, engineering, marketing/visualization
- TX APA professional award in 2017

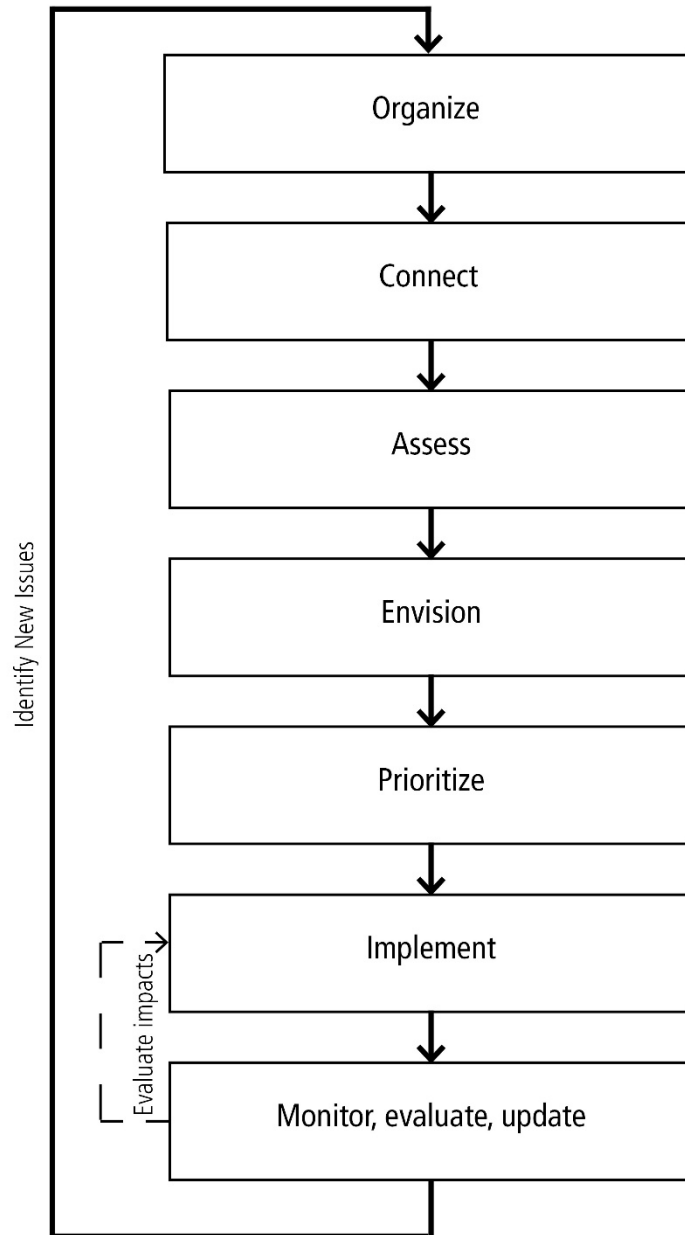
“We are stronger as a county when we all work together.”

Catalysts

1. Uncontrolled growth
2. Highway 99 planned
3. 2015-2016 received 5 disaster declarations



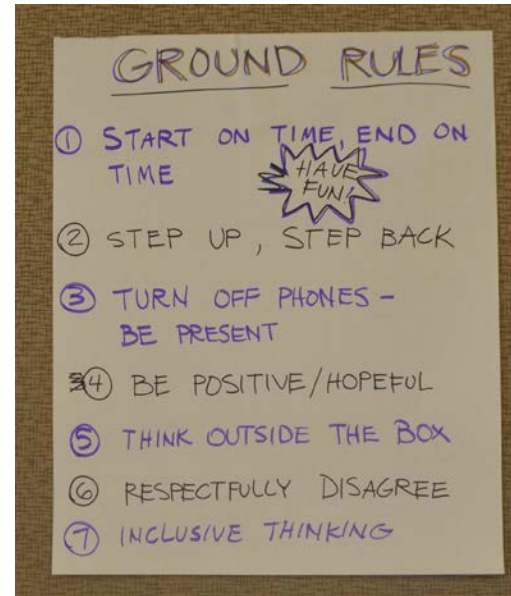
Inclusive Plan Making Process



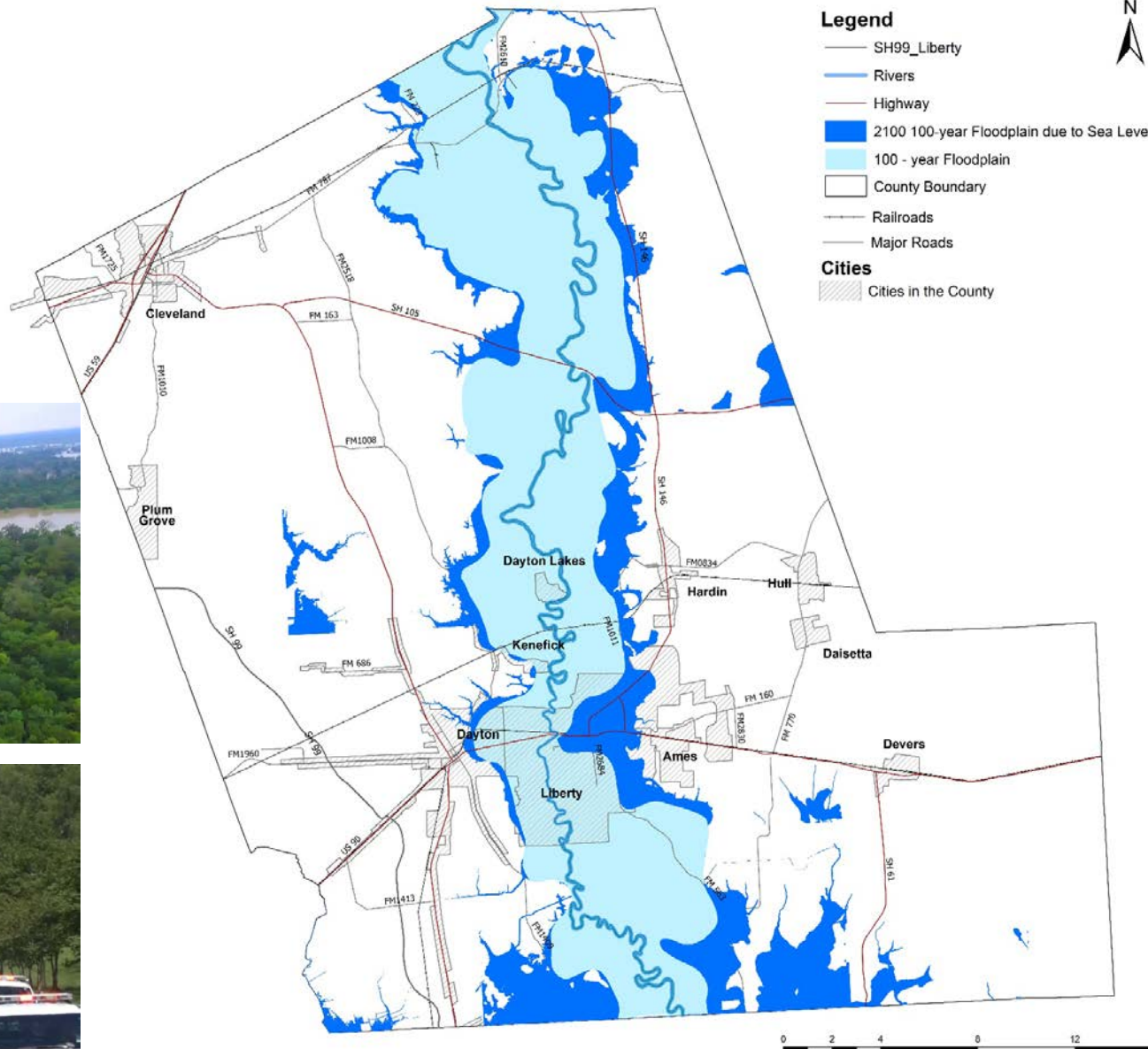
**What do we
want our
community to
be like?**

Organize & Connect

- Leadership of County Judge and Extension Agent
- Held 17 public forums and community meetings
- Cities, once with fierce rivalries determined that “we are stronger as a county when we all work together”

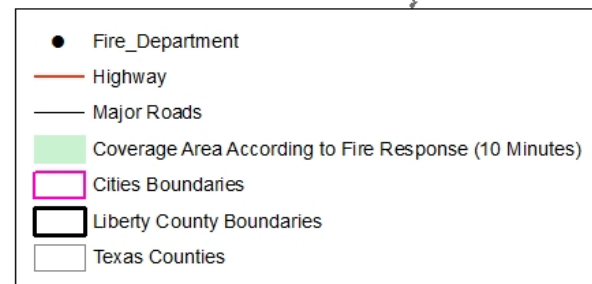


Assess



TEXAS A&M UNIVERSITY
Texas Target
Communities

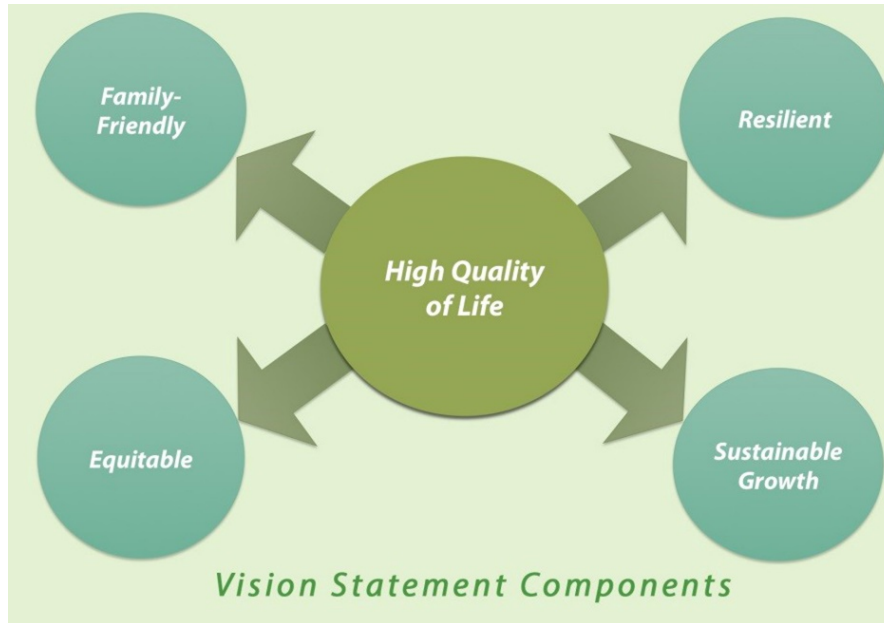
Assess



0 3.5 7 14 21 28 Miles

Coordinate System: NAD 1983 StatePlane
 Texas South Central FIPS 4204 Feet
 Projection: Lambert Conformal Conic
 Datum: North American 1983
 Units: Foot US

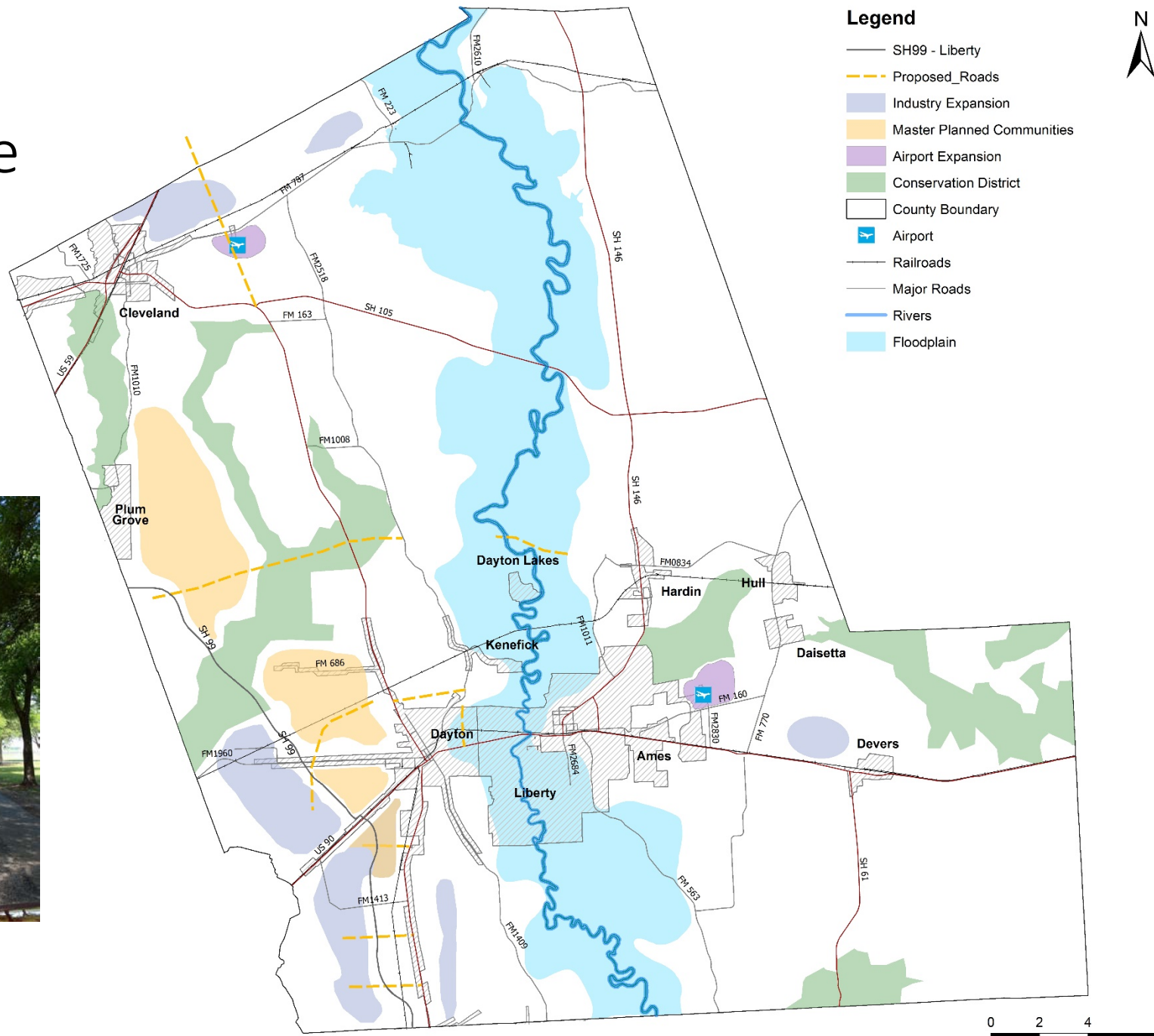
Envision



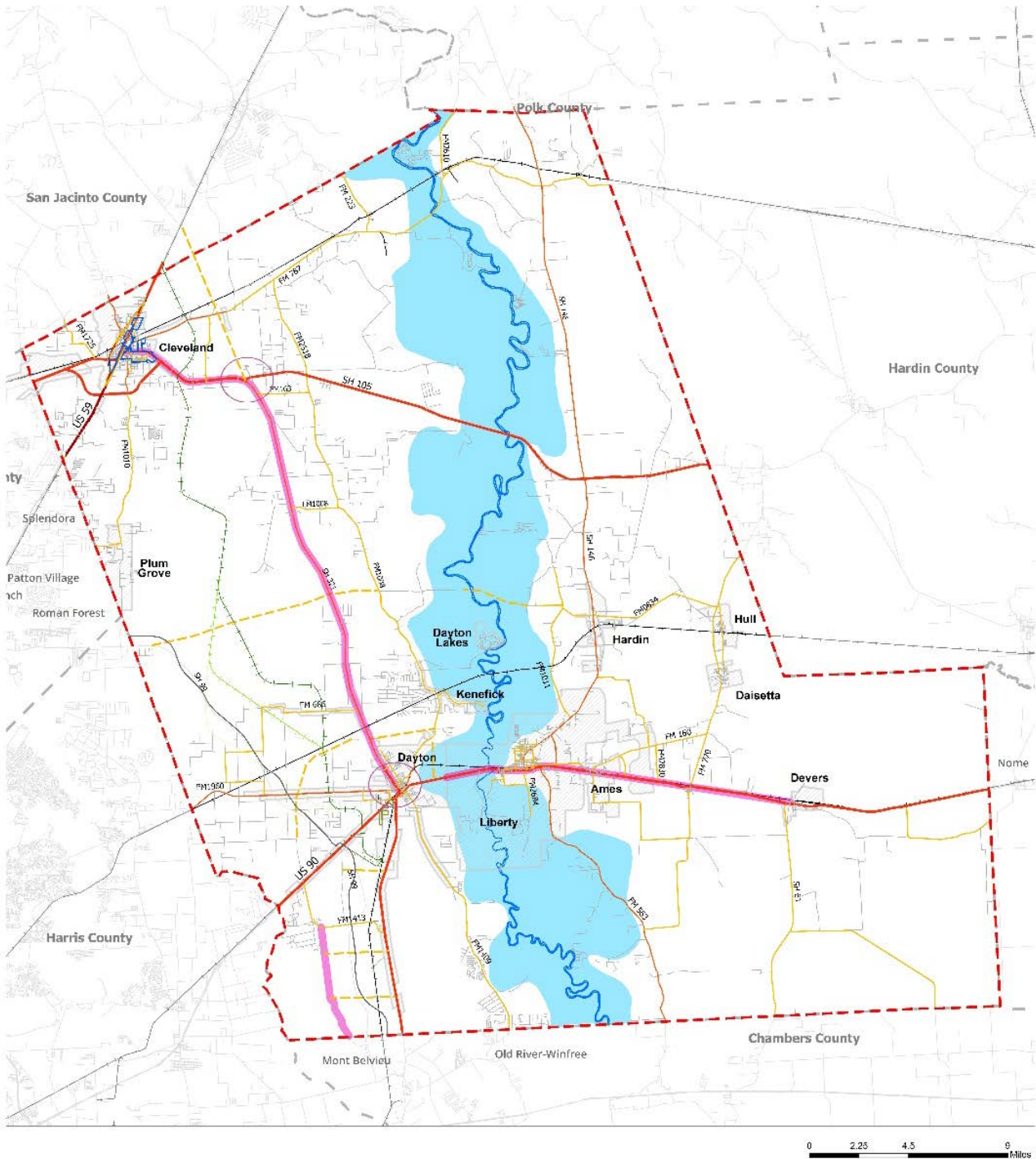
How will our vision influence:

- Development considerations
- Transportation
- Community facilities
- Economic development
- Environment & open space
- Housing

A perspective view of a paved path lined with mature trees, leading towards a body of water. The path is wide and paved with light-colored gravel or asphalt, showing dappled sunlight from the overhanging branches. The trees are lush green and form a dense canopy on both sides. In the distance, a body of water is visible under a clear blue sky. The bottom of the image shows the top of a car's dashboard, indicating it was taken from inside a vehicle.



Prioritize





Land Development

Land Development

Primary Action Type


Secondary Action Type


A Plan is your “Cook Book”

- The cities within the county are developing their own plans in line with the region.
- The cities within the county and stakeholders continue to meet regularly
- The county has reason to *work together with a shared vision for resilient development*






 ABOUTEXPLOREEVENTSECONOMIC DEVELOPMENT



LIBERTY COUNTY

Feels like home.

About

Liberty County is home to some of the kindest, friendliest, hardest working folk anywhere. Something is always happening here in Liberty County. Our proximity to Houston, lower cost of living, great schools, strong economy, and the world-class hospitality of communities like Cleveland, Liberty, and Dayton make Liberty County a wonderful place to raise a family or locate a business.


Cities

Cleveland
Liberty
Dayton


Explore

The Trinity River National Wildlife Refuge, locally owned restaurants, and historical destinations just scratch the surface of treasures Liberty County holds. Take a visit and explore the offerings of Liberty County.


OUTDOORS



DINING



HISTORY



Events

APR 2

Dairy Day Parade Cleveland, TX

>

APR 2

Dairy Day Parade Cleveland, TX

>

APR 2

Dairy Day Parade Cleveland, TX

>

Economic Development

Liberty County desires to facilitate the expansion and retention of businesses in our county by providing quality development opportunities, supporting infrastructure improvements and fostering a positive business climate in our county through cooperation with the business, labor, communities and underserved areas within Liberty County.

CONTACT INFORMATION


Jay Knight, County Judge
 phone: 936-336-4445
 fax: 936-336-4518
 email: cjudge@co.liberty.tx.us

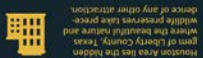
CITY ECONOMIC DEVELOPMENT

Liberty
 Dayton
 Cleveland

LIBERTY TAX ABATEMENT

Policy
 Application


 LIBERTY COUNTY



Just outside of the greater Houston Area lies the hidden gem of Liberty County, Texas. Home to the beautiful Trinity River, the county is a treasure trove of natural beauty and historic significance. The county is a treasure trove of natural beauty and historic significance. The county is a treasure trove of natural beauty and historic significance.

Liberty County is a treasure trove of natural beauty and historic significance. The county is a treasure trove of natural beauty and historic significance. The county is a treasure trove of natural beauty and historic significance.

Liberty County is a treasure trove of natural beauty and historic significance. The county is a treasure trove of natural beauty and historic significance. The county is a treasure trove of natural beauty and historic significance.

Liberty County is a treasure trove of natural beauty and historic significance. The county is a treasure trove of natural beauty and historic significance. The county is a treasure trove of natural beauty and historic significance.

Liberty County is a treasure trove of natural beauty and historic significance. The county is a treasure trove of natural beauty and historic significance. The county is a treasure trove of natural beauty and historic significance.

Liberty County is a treasure trove of natural beauty and historic significance. The county is a treasure trove of natural beauty and historic significance. The county is a treasure trove of natural beauty and historic significance.

Liberty County is a treasure trove of natural beauty and historic significance. The county is a treasure trove of natural beauty and historic significance. The county is a treasure trove of natural beauty and historic significance.

Liberty County is a treasure trove of natural beauty and historic significance. The county is a treasure trove of natural beauty and historic significance. The county is a treasure trove of natural beauty and historic significance.

Liberty County is a treasure trove of natural beauty and historic significance. The county is a treasure trove of natural beauty and historic significance. The county is a treasure trove of natural beauty and historic significance.

Liberty County is a treasure trove of natural beauty and historic significance. The county is a treasure trove of natural beauty and historic significance. The county is a treasure trove of natural beauty and historic significance.

Liberty County is a treasure trove of natural beauty and historic significance. The county is a treasure trove of natural beauty and historic significance. The county is a treasure trove of natural beauty and historic significance.

Liberty County is a treasure trove of natural beauty and historic significance. The county is a treasure trove of natural beauty and historic significance. The county is a treasure trove of natural beauty and historic significance.

the Alacost District. The distinguished public service of former governors, organizations, and citizens of educational exhibits and initiatives, honors through its collections, historic buildings, and historic landmarks.

Sam Houston Library in Liberty, TX serves the community. The library is a treasure trove of natural beauty and historic significance. The library is a treasure trove of natural beauty and historic significance.

Liberty County is a treasure trove of natural beauty and historic significance. The county is a treasure trove of natural beauty and historic significance. The county is a treasure trove of natural beauty and historic significance.

Liberty County is a treasure trove of natural beauty and historic significance. The county is a treasure trove of natural beauty and historic significance. The county is a treasure trove of natural beauty and historic significance.

Liberty County is a treasure trove of natural beauty and historic significance. The county is a treasure trove of natural beauty and historic significance. The county is a treasure trove of natural beauty and historic significance.

Liberty County is a treasure trove of natural beauty and historic significance. The county is a treasure trove of natural beauty and historic significance. The county is a treasure trove of natural beauty and historic significance.

Liberty County is a treasure trove of natural beauty and historic significance. The county is a treasure trove of natural beauty and historic significance. The county is a treasure trove of natural beauty and historic significance.

Liberty County is a treasure trove of natural beauty and historic significance. The county is a treasure trove of natural beauty and historic significance. The county is a treasure trove of natural beauty and historic significance.

Liberty County is a treasure trove of natural beauty and historic significance. The county is a treasure trove of natural beauty and historic significance. The county is a treasure trove of natural beauty and historic significance.

Liberty County is a treasure trove of natural beauty and historic significance. The county is a treasure trove of natural beauty and historic significance. The county is a treasure trove of natural beauty and historic significance.

Liberty County is a treasure trove of natural beauty and historic significance. The county is a treasure trove of natural beauty and historic significance. The county is a treasure trove of natural beauty and historic significance.

Liberty County is a treasure trove of natural beauty and historic significance. The county is a treasure trove of natural beauty and historic significance. The county is a treasure trove of natural beauty and historic significance.

Liberty County is a treasure trove of natural beauty and historic significance. The county is a treasure trove of natural beauty and historic significance. The county is a treasure trove of natural beauty and historic significance.

117 Bryan Street Dayton, Texas, 77521
business@libertycountytexas.org
936.253.2777

106 E. Crockett St. Cleveland, Texas, 77327
business@libertycountytexas.org
936.253.2777

Liberty County is a treasure trove of natural beauty and historic significance. The county is a treasure trove of natural beauty and historic significance. The county is a treasure trove of natural beauty and historic significance.

Liberty County is a treasure trove of natural beauty and historic significance. The county is a treasure trove of natural beauty and historic significance. The county is a treasure trove of natural beauty and historic significance.

Liberty County is a treasure trove of natural beauty and historic significance. The county is a treasure trove of natural beauty and historic significance. The county is a treasure trove of natural beauty and historic significance.

Liberty County is a treasure trove of natural beauty and historic significance. The county is a treasure trove of natural beauty and historic significance. The county is a treasure trove of natural beauty and historic significance.

Liberty County is a treasure trove of natural beauty and historic significance. The county is a treasure trove of natural beauty and historic significance. The county is a treasure trove of natural beauty and historic significance.

Liberty County is a treasure trove of natural beauty and historic significance. The county is a treasure trove of natural beauty and historic significance. The county is a treasure trove of natural beauty and historic significance.

Liberty County is a treasure trove of natural beauty and historic significance. The county is a treasure trove of natural beauty and historic significance. The county is a treasure trove of natural beauty and historic significance.

Liberty County is a treasure trove of natural beauty and historic significance. The county is a treasure trove of natural beauty and historic significance. The county is a treasure trove of natural beauty and historic significance.

Liberty County is a treasure trove of natural beauty and historic significance. The county is a treasure trove of natural beauty and historic significance. The county is a treasure trove of natural beauty and historic significance.

Liberty County is a treasure trove of natural beauty and historic significance. The county is a treasure trove of natural beauty and historic significance. The county is a treasure trove of natural beauty and historic significance.

Liberty County is a treasure trove of natural beauty and historic significance. The county is a treasure trove of natural beauty and historic significance. The county is a treasure trove of natural beauty and historic significance.

106 E. Crockett St. Cleveland, Texas, 77327
business@libertycountytexas.org
936.253.2777

Liberty County is a treasure trove of natural beauty and historic significance. The county is a treasure trove of natural beauty and historic significance. The county is a treasure trove of natural beauty and historic significance.

Liberty County is a treasure trove of natural beauty and historic significance. The county is a treasure trove of natural beauty and historic significance. The county is a treasure trove of natural beauty and historic significance.

Liberty County is a treasure trove of natural beauty and historic significance. The county is a treasure trove of natural beauty and historic significance. The county is a treasure trove of natural beauty and historic significance.

Liberty County is a treasure trove of natural beauty and historic significance. The county is a treasure trove of natural beauty and historic significance. The county is a treasure trove of natural beauty and historic significance.

Liberty County is a treasure trove of natural beauty and historic significance. The county is a treasure trove of natural beauty and historic significance. The county is a treasure trove of natural beauty and historic significance.

Liberty County is a treasure trove of natural beauty and historic significance. The county is a treasure trove of natural beauty and historic significance. The county is a treasure trove of natural beauty and historic significance.

Liberty County is a treasure trove of natural beauty and historic significance. The county is a treasure trove of natural beauty and historic significance. The county is a treasure trove of natural beauty and historic significance.

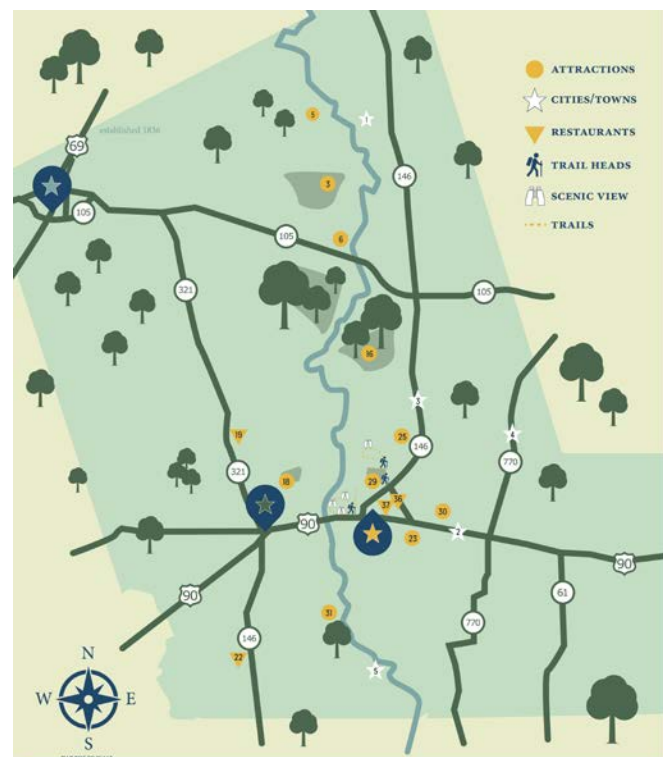
Liberty County is a treasure trove of natural beauty and historic significance. The county is a treasure trove of natural beauty and historic significance. The county is a treasure trove of natural beauty and historic significance.

Liberty County is a treasure trove of natural beauty and historic significance. The county is a treasure trove of natural beauty and historic significance. The county is a treasure trove of natural beauty and historic significance.

Liberty County is a treasure trove of natural beauty and historic significance. The county is a treasure trove of natural beauty and historic significance. The county is a treasure trove of natural beauty and historic significance.

Liberty County is a treasure trove of natural beauty and historic significance. The county is a treasure trove of natural beauty and historic significance. The county is a treasure trove of natural beauty and historic significance.

Liberty County is a treasure trove of natural beauty and historic significance. The county is a treasure trove of natural beauty and historic significance. The county is a treasure trove of natural beauty and historic significance.



ATTRACTIONS

- 1 CLEVELAND CIVIC CENTER & STANLEY EXPO CENTER Community center, for open, public, covered arena and arena hall.
- 2 CLEVELAND HISTORICAL MUSEUM Collection of relics and artifacts of the historical city of Cleveland.
- 3 DAVIS HILL STATE PARK One of the largest state parks in the state, located on the highest hill in the state, offering scenic views and recreational activities.
- 4 CLEVELAND CITY PARK One of the largest city parks in the heart of the city.
- 5 THE RETREAT AT ARTHUR LAKES A scenic retreat, offering scenic views and recreational activities.
- 6 THE PRESERVE OF TEXAS A scenic preserve, offering scenic views and recreational activities.
- 7 OLD SCHOOL MUSEUM One of the largest museums in the state, offering scenic views and recreational activities.
- 8 JONES PUBLIC LIBRARY A public library, offering scenic views and recreational activities.
- 9 BROWNWOOD SCHOOL MUSEUM One of the largest museums in the state, offering scenic views and recreational activities.
- 10 TRINITY RIVER NATIONAL WILDLIFE REFUGE A scenic refuge, offering scenic views and recreational activities.
- 11 HENDERSON DAY PARK One of the largest parks in the state, offering scenic views and recreational activities.
- 12 DANIELS PARK One of the largest parks in the state, offering scenic views and recreational activities.
- 13 TRINITY VALLEY EXPOSITION One of the largest expositions in the state, offering scenic views and recreational activities.
- 14 LIBERTY OPEX One of the largest opexs in the state, offering scenic views and recreational activities.
- 15 SAM HOUSTON REGIONAL LIBRARY A regional library, offering scenic views and recreational activities.
- 16 GERALDINE D. JENSEN'S CULTURAL CENTER One of the largest cultural centers in the state, offering scenic views and recreational activities.
- 17 THE HISTORIC OTT HOTEL One of the largest hotels in the state, offering scenic views and recreational activities.
- 18 LIBERTY COUNTY CO-OP HOUSE One of the largest co-op houses in the state, offering scenic views and recreational activities.
- 19 LIBERTY MUNICIPAL PARK One of the largest municipal parks in the state, offering scenic views and recreational activities.
- 20 MAGNOLIA RIDGE COUNTRY CLUB One of the largest country clubs in the state, offering scenic views and recreational activities.
- 21 CLAY MOUND SPORTING CENTER One of the largest sporting centers in the state, offering scenic views and recreational activities.

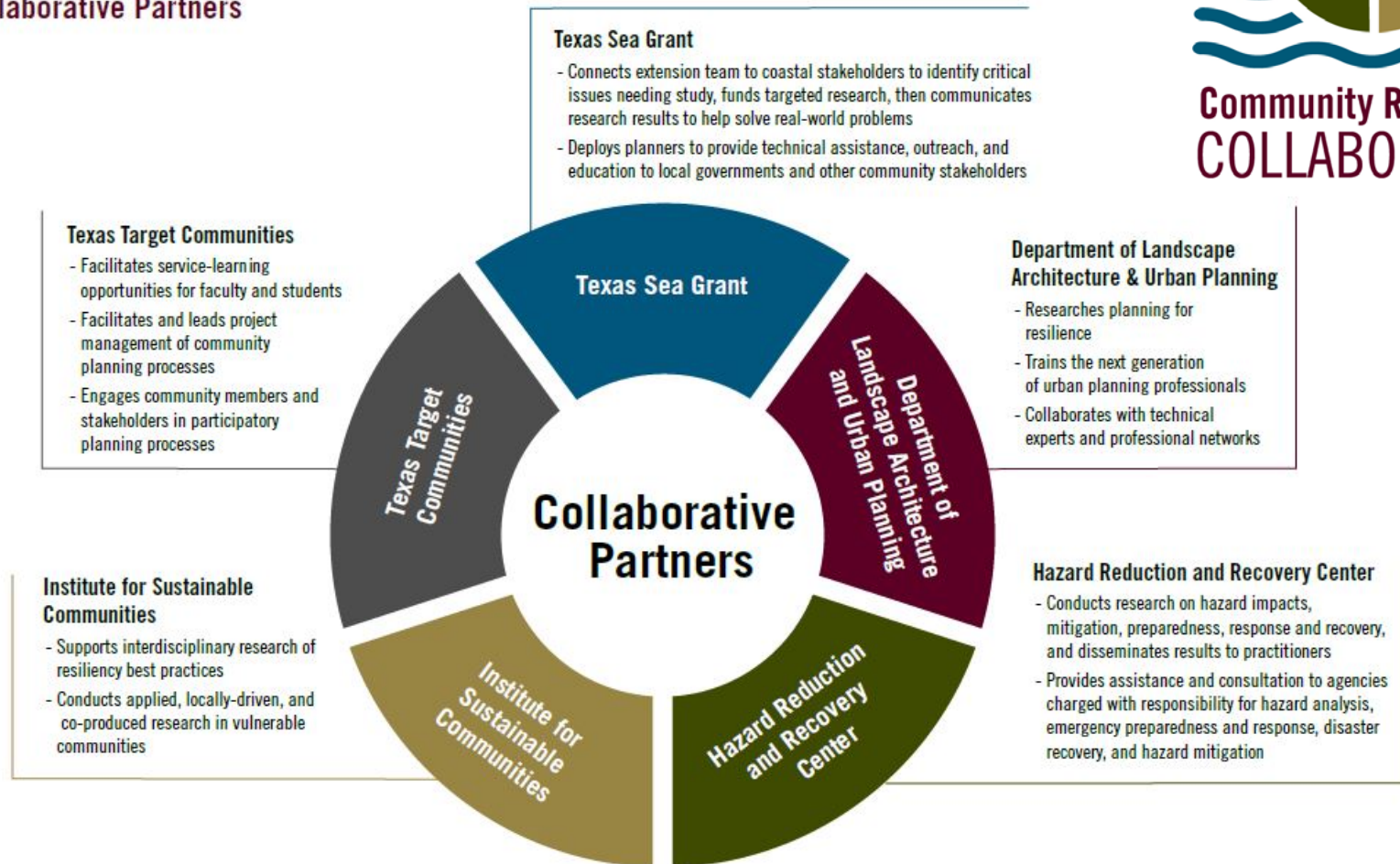
MAJOR CITIES

- 1 LIBERTY, TEXAS
- 2 DAYTON, TEXAS
- 3 CLEVELAND, TEXAS
- 4 RYE, TEXAS
- 5 ANGE, TEXAS
- 6 HARDEN, TEXAS
- 7 HILL-DANIELS, TEXAS
- 8 MOSS BLVD, TEXAS

RESTAURANTS

- 1 BIG KAHUNA 106 E. Crockett St., Cleveland, Texas 77327
- 2 CAPTAIN R SEAFOOD 1145 Washington Ave., Cleveland, TX 77327
- 3 CASA DEL PUEBLO 708 N. Washington Ave., Cleveland, TX 77327
- 4 PUEBLO VIEJO MEXICAN RESTAURANT 509 S. Washington Ave., Cleveland, TX 77327
- 5 AGAVE MEXICAN RESTAURANTE 509 S. Washington Ave., Cleveland, TX 77327
- 6 THE SHACK BBQ 1323 N. San Jacinto Ave., Cleveland, TX 77327
- 7 ALONDRAS MEXICAN RESTAURANT 801 County Rd. 87A, Dayton, TX 77535
- 8 TEXAS KOUNTRY KITCHEN 13 N. Main St., Dayton, TX 77535
- 9 THE BEST LITTLE BAKERY 804 Calumet St., Dayton, TX 77535
- 10 AJA 9517 TX-146, Dayton, TX 77535
- 11 ANN'S SEAFOOD 720 Main St., Dayton, TX 77535
- 12 LAS DOS HACIENDAS 1717 US-90, Liberty, TX 77555
- 13 CASA DEL PUEBLO 1210 US-90, Liberty, TX 77555
- 14 CASA DON BONI 909 Main St., Dayton, TX 77535
- 15 LAS DOS HACIENDAS 1717 US-90, Liberty, TX 77555
- 16 MY LITTLE KITCHEN RESTAURANT 2527 US-90, Liberty, TX 77555
- 17 LAURA'S SANDWICH SHOP 3218 Beaman Ave., Liberty, TX 77555
- 18 MIKE'S BBQ 117 Bryan St., Dayton, TX 77535

Collaborative Partners



Combining Resources And Strengths For Communities

Goals of the program:



1. Communities adopt high-quality plans to achieve locally defined visions of sustainable development.



2. Communities increase resilience to natural and technological hazards.



3. Habitat, ecosystems and the services they provide are monitored, enhanced and/or restored.



4. Local and scientific knowledge is leveraged in planning and other decision-making processes.

Figure 1: The CRC coordinates efforts from Texas A&M University in College Station with a team of planners in three regions: the Upper Coast, Coastal Bend and Rio Grande Valley.

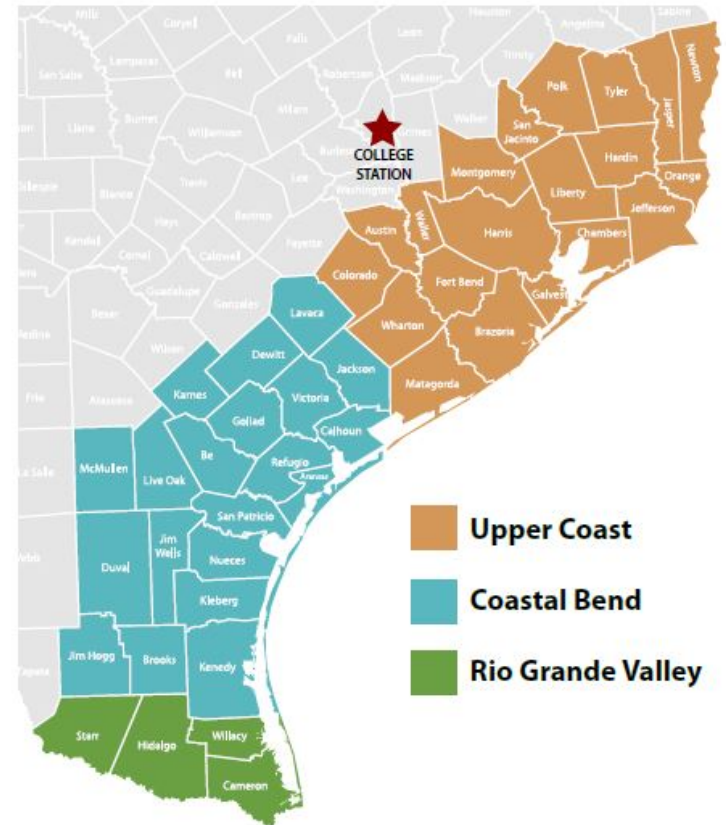
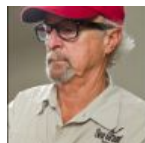
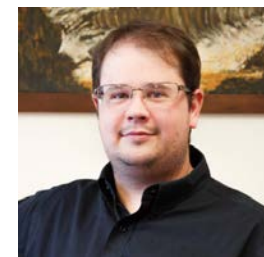
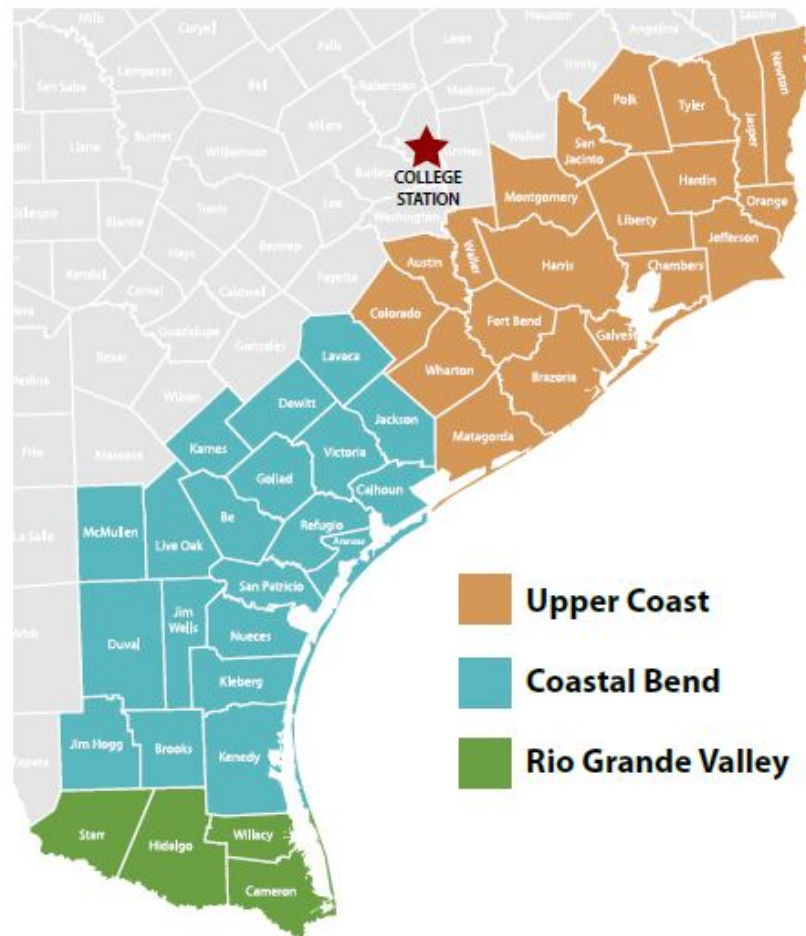
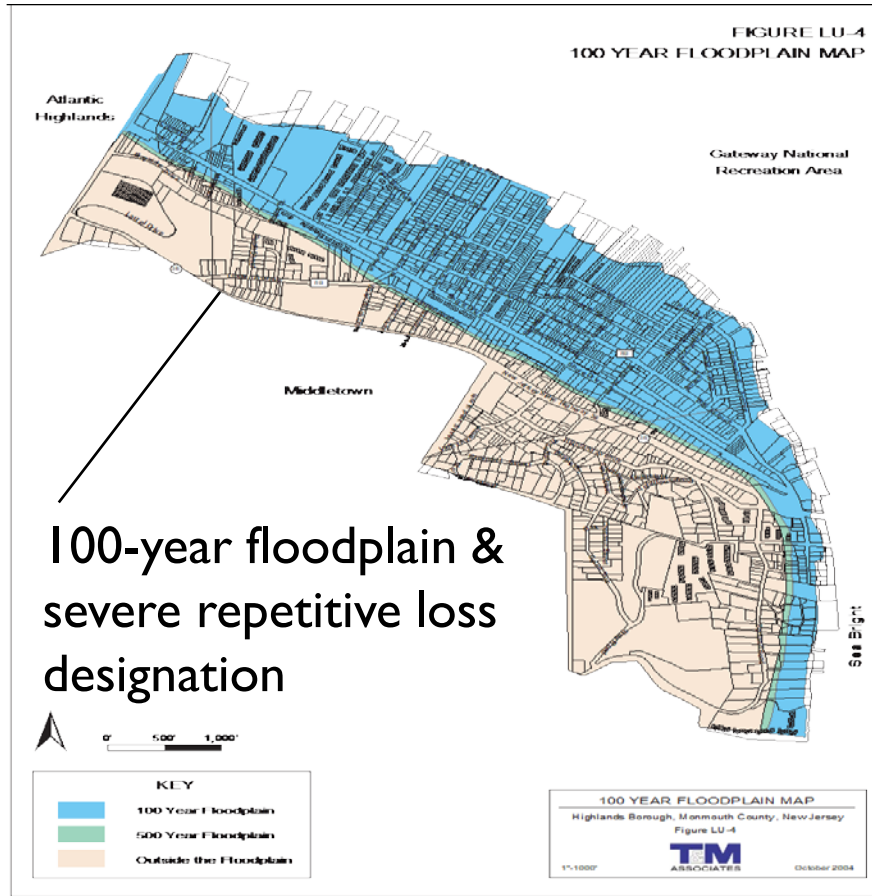


Figure 1: The CRC coordinates efforts from Texas A&M University in College Station with a team of planners in three regions: the Upper Coast, Coastal Bend and Rio Grande Valley.

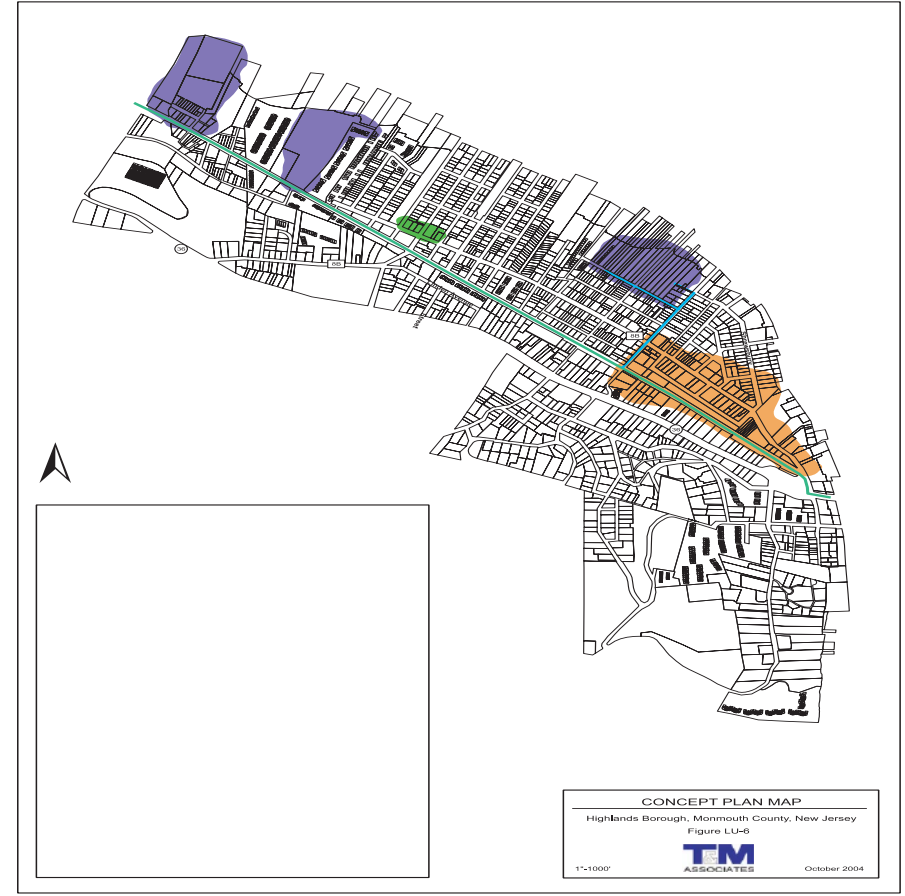


Plan Integration for Resilience Scorecard

Highlands, NJ Before Hurricane Sandy: Opposing Intentions?



Hazard Mitigation Plan



Comprehensive Plan

Plan Integration for Resilience Scorecard

- **Project Overview**

- Land use planning is key to resilience.
- Cities adopt networks of plans.
- Integration of hazards/climate change in local plans affects future resilience.

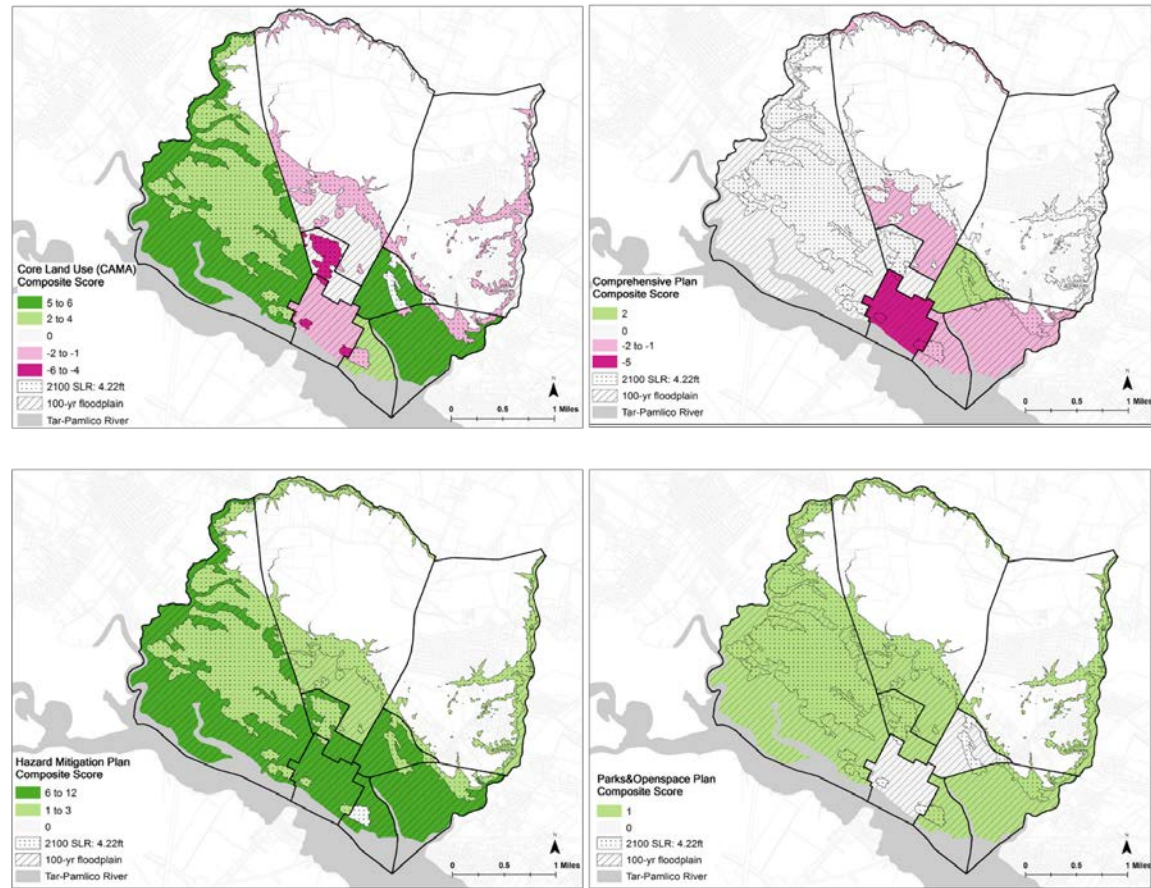
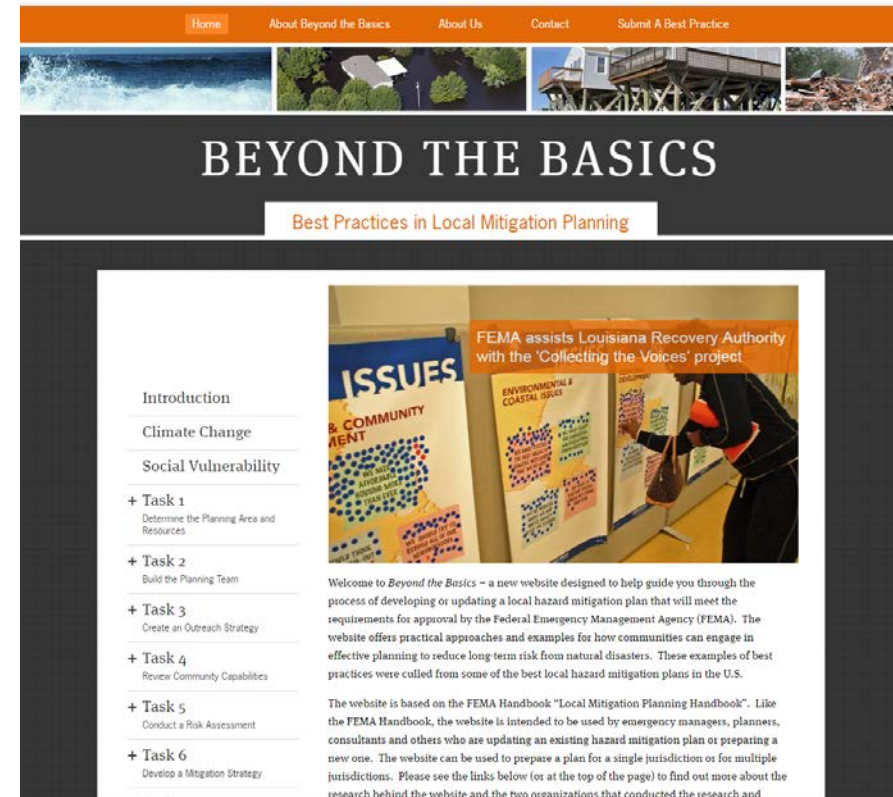


Figure 3.3 Comparing Scores of Different Planning Documents in Washington, NC.

Plan Integration for Resilience Scorecard

- How to develop how quality plans
 - Local mitigation plans
- Mitigationguide.org



Contact information

Jaimie Hicks Masterson, AICP
Associate Director
jmasterson@arch.tamu.edu
979.458.1295

John T. Cooper, Jr., Ph.D.
Director

Jeewasmi Thapa, AICP
Program Coordinator

www.ttc.arch.tamu.edu

