

2 CINCO RANCH

3 SPRING

4 BAYTOWN

5 LA PORTE

# LEGEND

- Bike Lanes (on-street)**  
Dedicated lane marked off with painted lines for use by cyclists
- Shared Use Path/Trail**  
Dedicated trail completely separated from auto traffic used by pedestrians and cyclists
- Signed Shared Roadway**  
Route with signs indicating cars and cyclists need to share the travel lanes
- Signed Shoulder Route**  
Route with signs indicating that cyclists are permitted to use the shoulder as a travel lane
- Proposed (Future) Routes**
- METRO Rail**
- Major Highways**
- Houston B-cycle Stations**
- Bike Shops**
- Hospitals**
- Points of Interest**
- Light Rail and Stations**
- Transit Centers/ Park and Rides**
- Universities**
- Parks**

1 HOUSTON

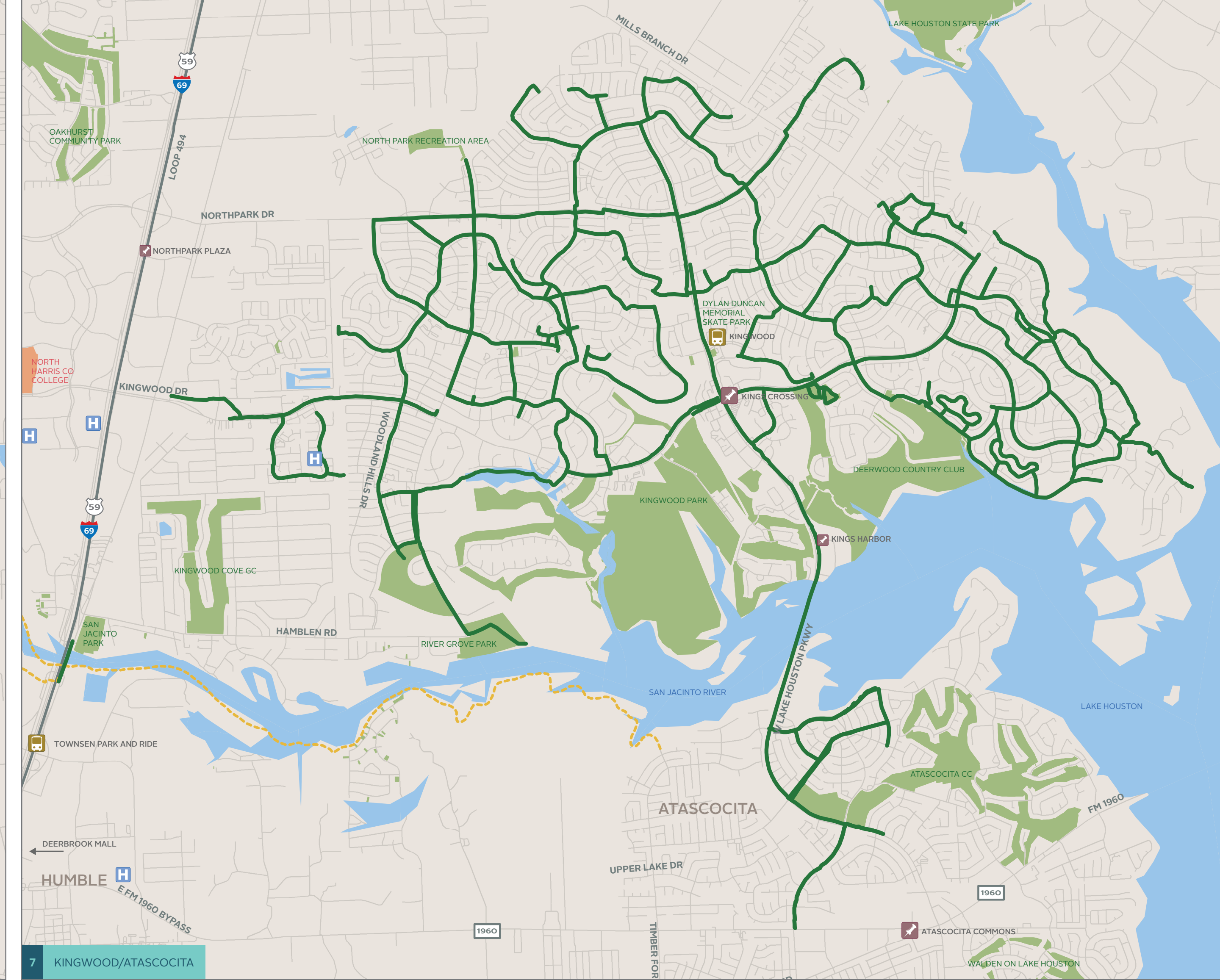
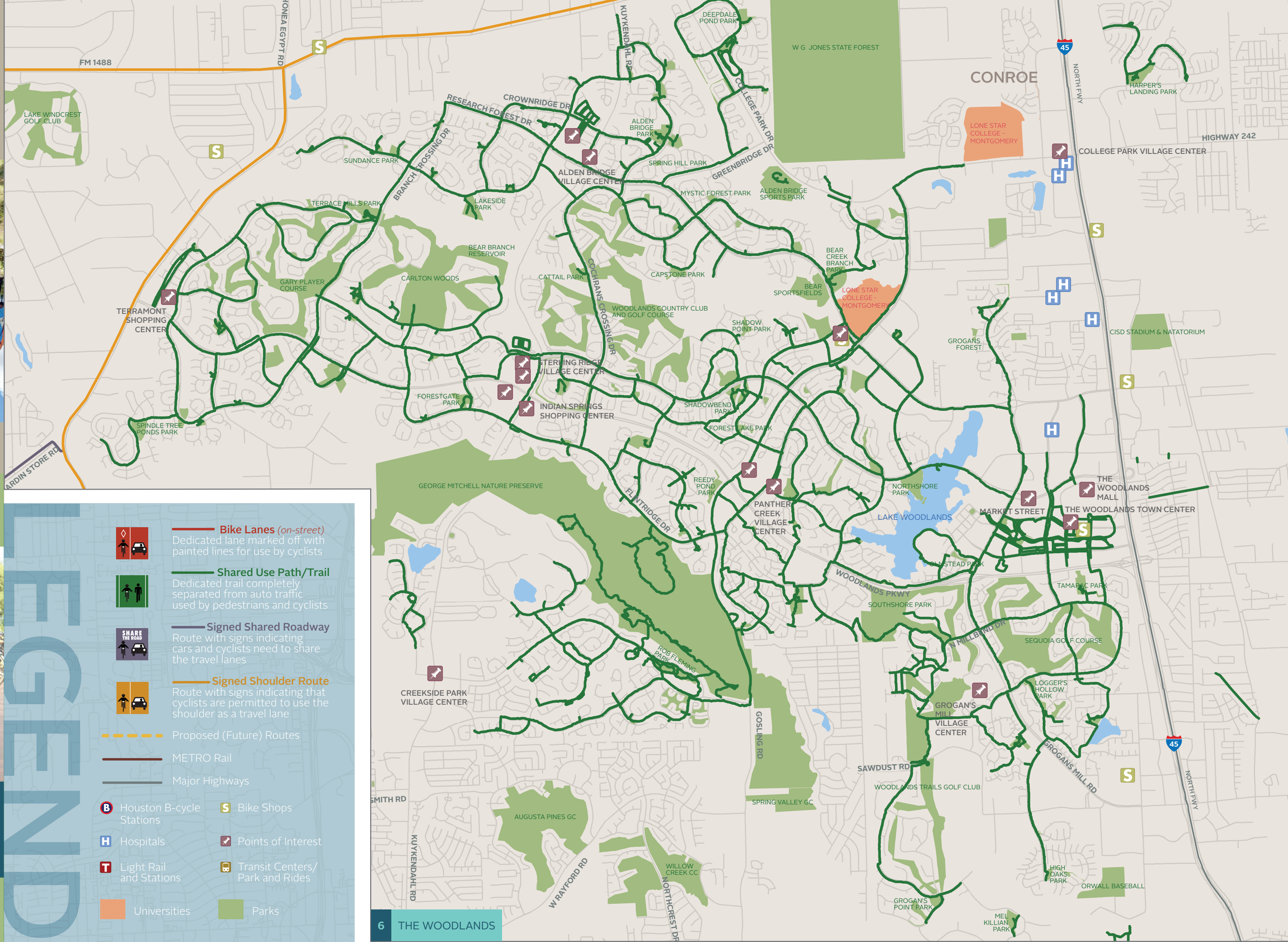
**SAFETY TIPS**

- Always wear a helmet
- Ride in the same direction as traffic, with against traffic
- Use headlights, brake lights and reflectors
- Obey vehicular traffic laws
- Be visible, be predictable and communicate

**IMPORTANT LINKS**

- League of American Bicyclists - Ride Smart <https://www.bicycling.com/ride-smart>
- GoC Bicycling View [http://go.cycling.com/BikeWay\\_Maps/](http://go.cycling.com/BikeWay_Maps/)

Houston-Galveston Area Council  
www.hgac.com  
713-865-3000  
10000 Katy Road, Suite 1000  
Houston, TX 77054-2777



**LEGEND**

- Bike Lanes (on-street)**  
Dedicated lane marked off with painted lines for use by cyclists
- Shared Use Path/Trail**  
Dedicated trail completely separated from auto traffic, used by pedestrians and cyclists
- Signed Shared Roadway**  
Route with signs indicating cars and cyclists need to share the travel lanes
- Signed Shoulder Route**  
Route with signs indicating that cyclists are permitted to use the shoulder as a travel lane
- Proposed (Future) Routes
- Major Highways
- Houston B-cycle Stations
- Bike Shops
- Hospitals
- Points of Interest
- Light Rail and Stations
- Transit Centers/ Park and Rides
- Universities
- Parks

**BIKE WAY MAP**  
HOUSTON-GALVESTON AREA

