

Bringing Back Main Street

The Eagle Lake Chamber of Commerce

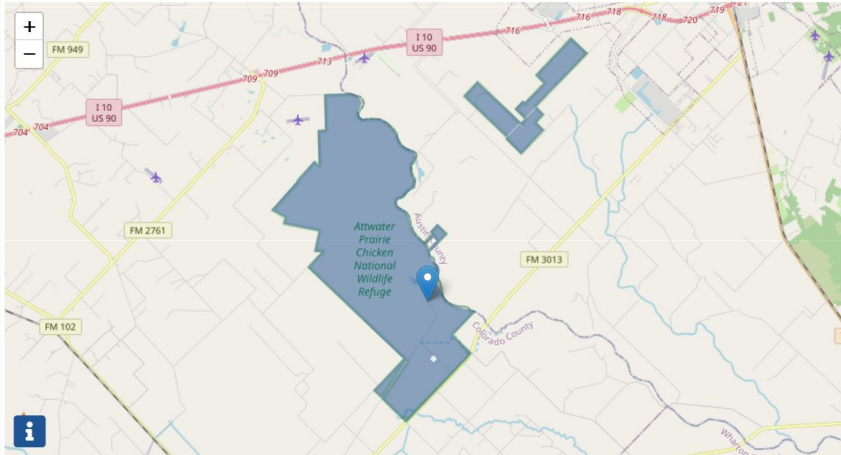
Presented by: Paige Pavlu, President

Introduction

- Tourism / Economic Connections
 - Attwater Prairie Chicken National Refuge
 - Hunting
 - Rice Farming
 - Shopping
- History
- Partnership with the City

Tourism & Economic Connections (Wildlife)

- Attwater Prairie Chicken National Refuge
 - Just celebrated the grand opening of new facilities.
 - Booming and Blooming Festival





Images: Attwater Prairie Chicken National Wildlife Refuge Facebook Page



Attwater Prairie Chicken Booming Video

Tourism & Economic Connections cont.

- Economic Connections
 - Interaction between people of different socioeconomic statuses - all coming together for one main cause.
- Example: Attwater Prairie Chicken Refuge Booming & Blooming Festival
 - Houston Zoo
 - Texas Parks & Wildlife
 - Friends of the Attwater Prairie Chicken Refuge
 - Public



Tourism & Economic Connections cont.

- Veterans Memorial Park
 - David Winterman Wildlife Area
 - Eagle Lake Boardwalk & Nature Trail
- Birding
 - Over 400 species have been spotted in these areas



Tourism & Economic Connections (In Town)

- Shopping
- Museum
- Restaurants
- Travel Stop

Discover Eagle Lake Texas presents:

MINI MIC SERIES

We will be interviewing members
of the Eagle Lake Chamber of
Commerce, local businesses, and
local clubs. We want to highlight
what you have to offer!

#shoplocaleaglelake

Discover Eagle Lake Texas is brought to you
by the Eagle Lake Chamber of Commerce

Hunting

- Primarily duck, goose, and dove hunting
- 10 - 15 hunting clubs in the area
- Known as the “Goose Hunting Capital of the World”



Hunting cont.

- Before the civil war train passengers crossing the Eagle Lake prairie described seeing Sandhill Cranes, ducks, Canada geese and swans.
- In the 1950s hunters started using decoys to bring in geese.
 - White rag spread
 - Newspaper
 - White windsock



Hunters in downtown Eagle Lake, 1920s, with greater and lesser Canada geese. Courtesy Nesbitt Memorial Library.



Rag spread, 1961

Rice Farming

- First planted in 1896 by William Dunovant on his plantation in Eagle Lake (lower lake area).
- First pumping station in 1899 - and by 1900 rice on the Hall Ranch was being watered.
- Captain Dunovant was also responsible for the first rice mill built in 1901 at Lakeside.
- Drought
 - Brownwood Dam, 1934 - accidental draining of lake
 - LCRA - credited with saving the rice industry from 1951-1957 (dams)
- Problems faced - Water
 - "Rice requires over a million gallons per acre annually" - David R Winterman, A History of Eagle Lake Texas

Rice Farming cont.

- Rice quickly replaced cotton and sugar cane as the primary cash crop in Colorado County. That the crop had a widespread economic impact.
 - Increase in property values
 - Influx of new families
 - Reclamation of abandoned cropland
 - Rise in new railroad construction
 - Rice mills
 - Irrigation companies
- Rice farming today-
 - There are approximately 80 rice farmers in the Eagle Lake area today





History of Eagle Lake - The People

- “Laguna del Aquilla”
- Colonization from 1827 - 1836 by pioneers from Virginia and Tennessee
- 1897: Cotton town along the Southern Pacific and Aransas pass roads.
- Cane Belt railroad
- William Dunovant - rice
- Lakeside Sugar Refining Co. (G.W. Deaton Company) 1902

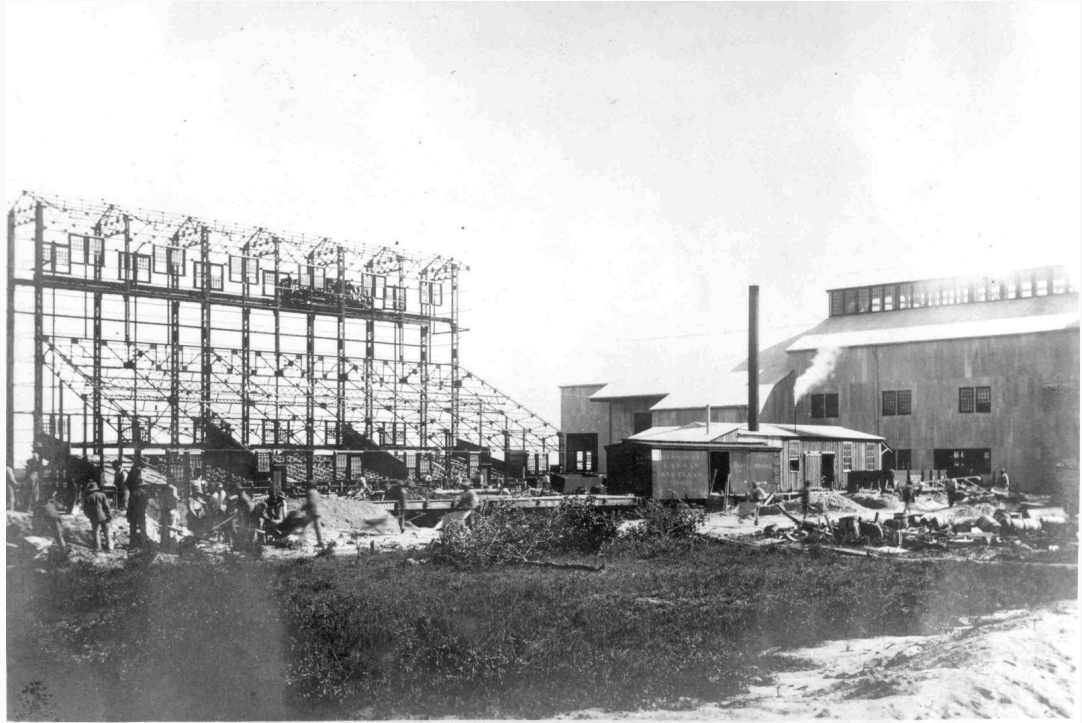


Image: Nesbit Memorial Library



D 3357. City Park, Eagle Lake, Texas.

History - The Lake

- Camping grounds for the Karankawa Indians
- The Lake Pavilion
- 1902: water rights from the lake were sold to the mill for industrial purposes.
- During the summers irrigation of rice caused the lake to be pumped extremely low.
- Leased to the Eagle Lake Rod and Gun club for hunting and fishing in 1920.

Partnership with The City

- In my eyes the main goal is to improve Eagle Lake, and provide outreach/support for local businesses, along with promoting what we have to offer as a town.
- I'd love to find ways to get our community more involved in functions around town, as well as supporting local businesses.
- Continue to network with surrounding areas. We want people to come to our town and say WOW look at all they have to offer here, and of course come back again!

Thank You!

Questions?

