



# LIVABLE CENTERS

LIVE, WORK, PLAY

Facilitating Housing in Livable Centers Workshop

# Rural and Small Town Downtown Revitalization Summit

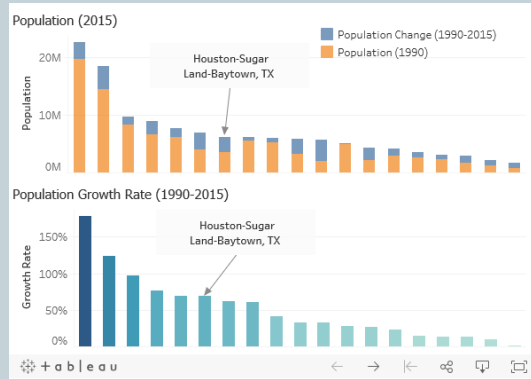
Tuesday, October 22

8:30 a.m. to noon

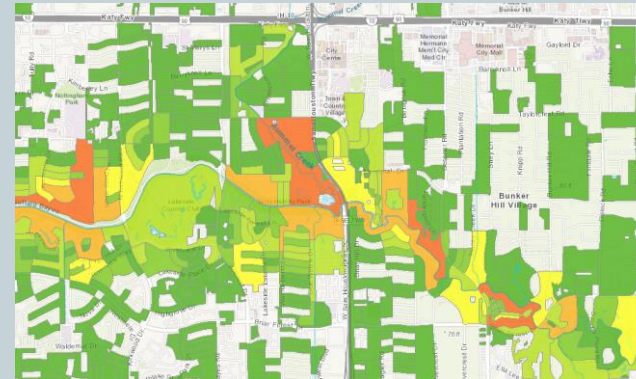
at H-GAC

Register at [www.h-gac.com/go/bbms](http://www.h-gac.com/go/bbms)

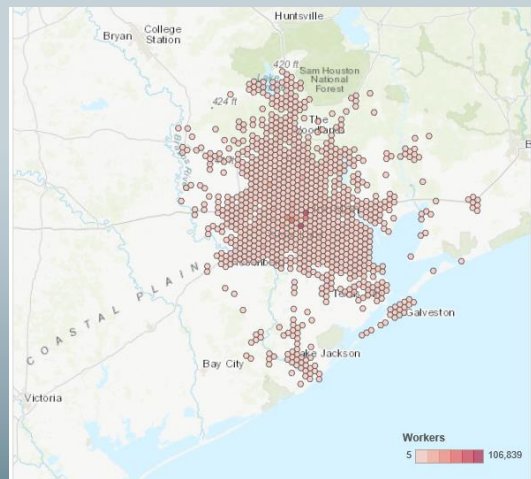
# For Interactive maps and data, visit [H-gac.com/go/apps](http://H-gac.com/go/apps)



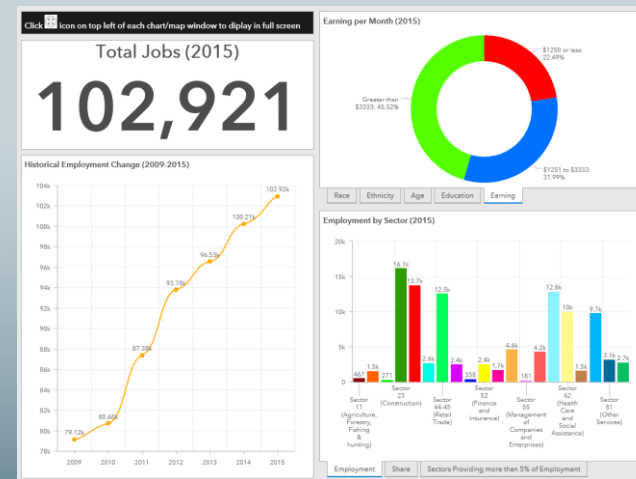
## Regional Growth report



## Regional flood information



## Historic commuting patterns



## Regional Employment snapshot

# Fall Planning Workshop for Local Governments: Building Equity Into Planning

Friday, November 1  
8:30 a.m. to 12:30 p.m.  
at H-GAC

Register at [www.h-gac.com/go/fall-planning](http://www.h-gac.com/go/fall-planning)

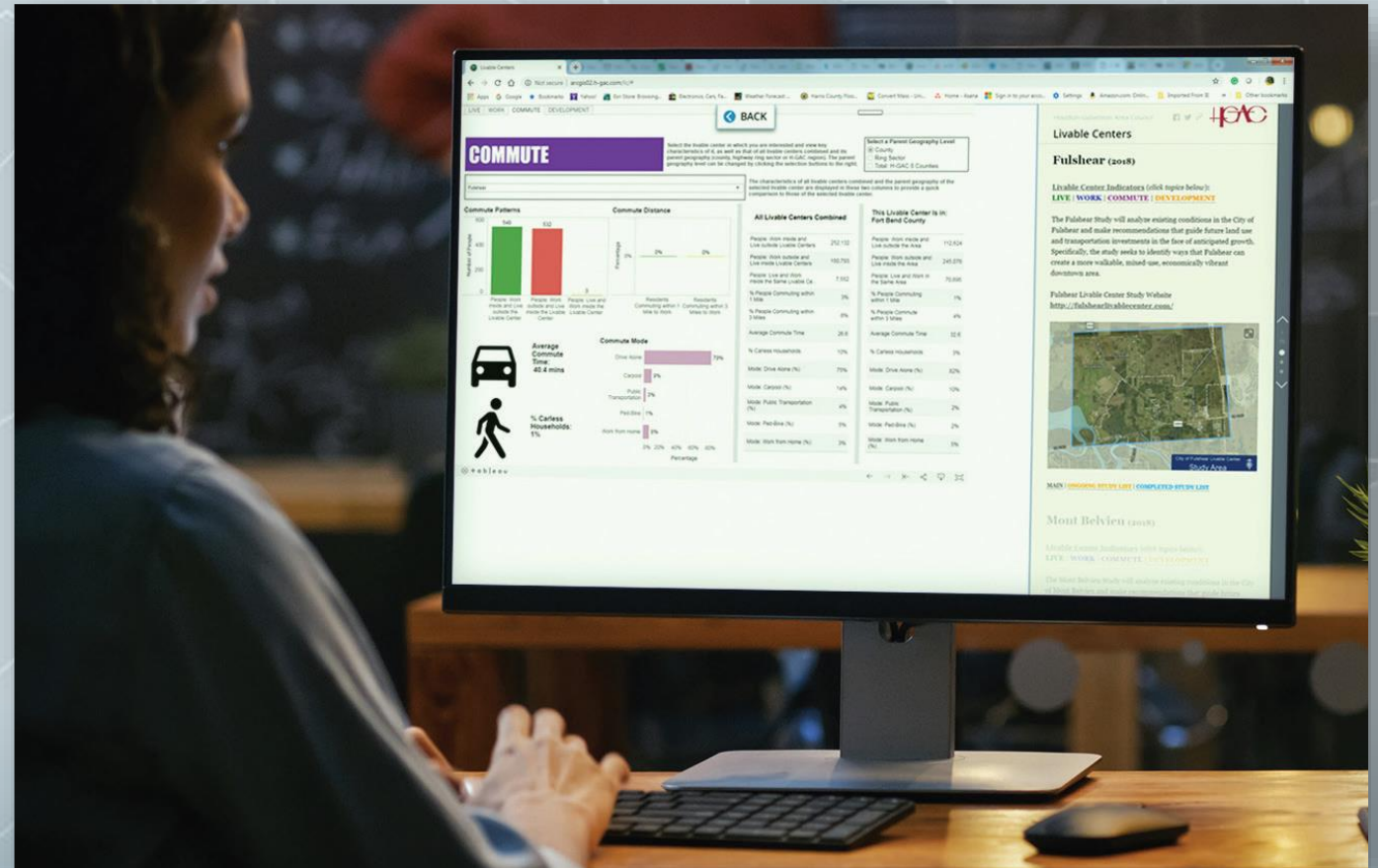


# Livable Centers Demographic Profiles

## ■ Interactive Planning Tool

- Live
- Work
- Commute
- Develop

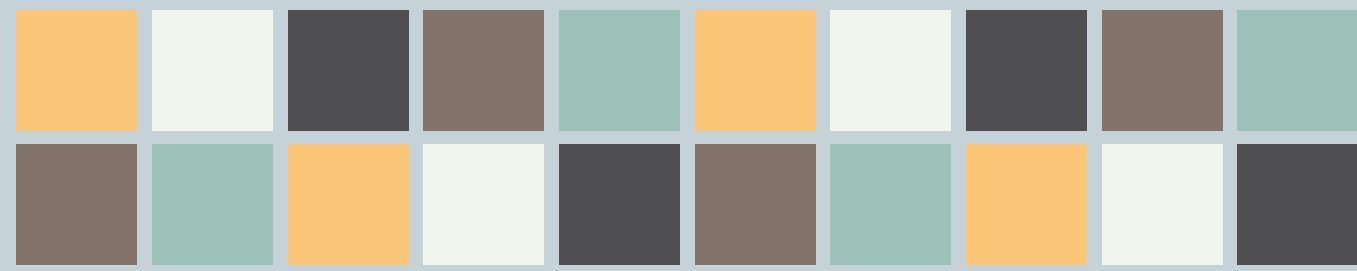
## ■ Program Tracker



<https://datalab.h-gac.com/lc>



# BRINGING BACK MAIN STREET



## Next Topic: Revitalization Roundtable

**Tuesday, October 22**

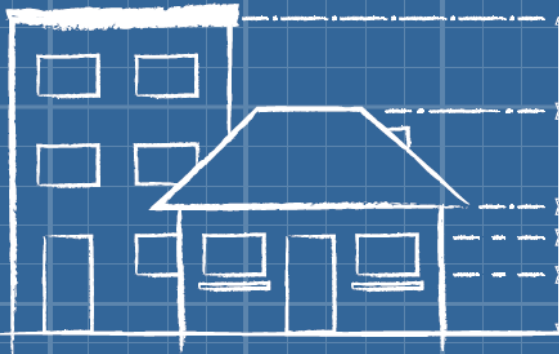
**8:30 a.m. to 12:20 P.M.**

**at H-GAC**

Register at [www.h-gac.com/go/bbms](http://www.h-gac.com/go/bbms)

Quarterly Meetings – 13 County Region

[h-gac.com/go/bbms](http://h-gac.com/go/bbms)



# Toolbox

## Facilitating Housing, Livable Centers

### Facilitating Housing Toolbox for Livable Centers

#### Facilitating Housing Toolbox

Housing recommendations from past Livable Centers studies were evaluated and summarized into a single toolbox for ease of review and cross collaboration between past study partners and the region. Provided tools are being deployed daily, and this toolbox serves as a template to be matured as additional scenarios are identified through the Livable Centers Program. For more information on how to become a Livable Centers partners and gain access to tool development for your community, please contact [LivableCenters@h-gac.com](mailto:LivableCenters@h-gac.com).

Livable Center empower local partners to better plan, promote and attract positive investment within their communities. Associated housing tools identified through associated studies include: Enhance Local Policies, Increased Capacity, and Incentivize Housing Investment.

Policy Tools

Incentives Tools

Capacity Increase Tools