

# CITY OF FRIENDSWOOD

---

## ADA Compliant Sidewalks and Curb Ramps in Downtown Friendswood



# Friendswood Facts

- Population Approx. 42,051
- 15,178 Households
- Land Size 21.2 Square Miles
- Downtown 1.4 Miles in Length



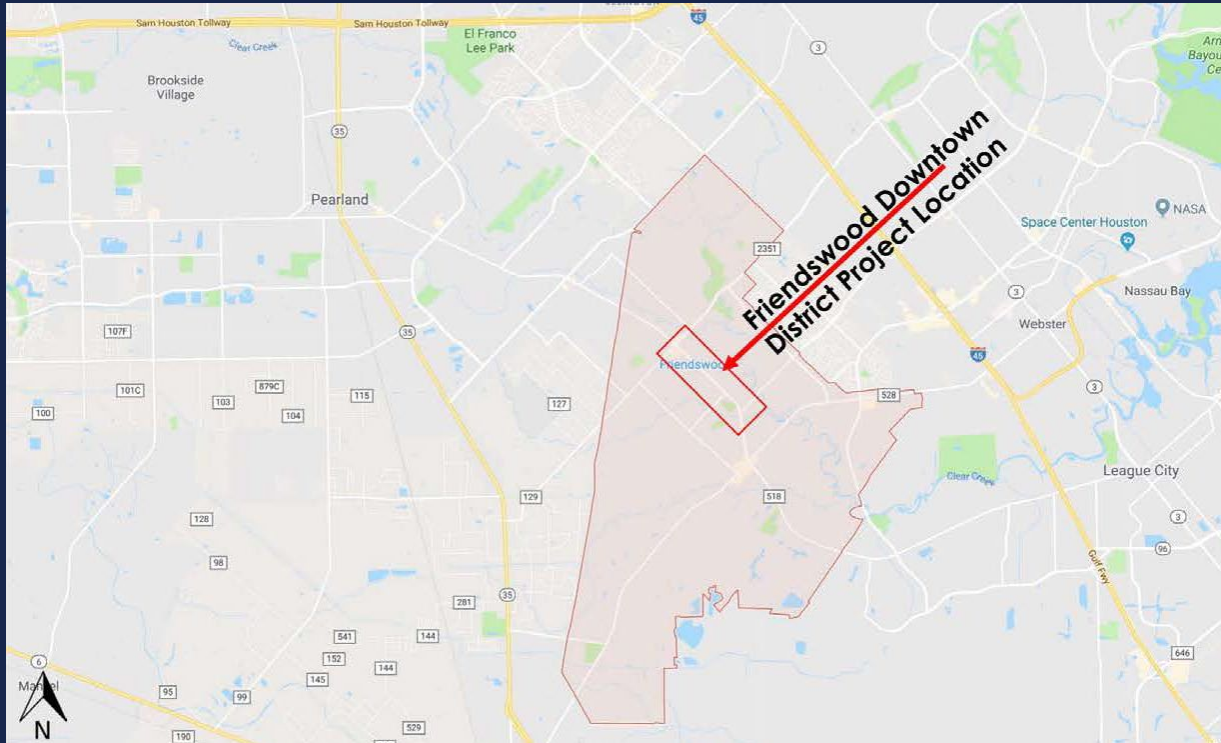
# Mayor and City Council

- |                     |            |
|---------------------|------------|
| • Mike Forman       | Mayor      |
| • John Ellisor      | Position 1 |
| • Sally Branson     | Position 2 |
| • Trish Hanks       | Position 3 |
| • Robert J. Griffon | Position 4 |
| • Joe Matranga      | Position 5 |
| • Michael P. Ross   | Position 6 |



TM

# Downtown Focus – Mayor & Council



- June 2008 Council designates the Downtown District's Neighborhood Empowerment Zone (NEZ Number 1) waiving construction and impact fees.
- May 2016 Friendswood Downtown Economic Development Corporation created as result of voter approval.
- October 2018 City Council adopts the Friendswood Downtown District Improvement Plan. Implementing a guide for the FDEDC identifying future projects for Downtown.

# Friendswood Downtown Economic Development Corporation (FDEDC)

Dr. Rebecca Hillenburg  
Elmer “Bubba” Johnson, Jr.  
Paul Marx  
Ron Cox  
Arden “Trey” Hill  
Chris Richardson  
Scott MacKenzie

President  
Vice President  
Sec./Treasurer  
Board Member  
Board Member  
Board Member  
Board Member





# Downtown Focus – The FDEDC

*Lauren Griffith Associates*  
*Landscape Architecture and Planning*



Friendswood Downtown District  
Improvement Plan



- May 2016 Creation of Type B Economic Development Program
- Utilizes 1/8 cent sales and use tax to promote new or expanded business enterprises in downtown area.
- Includes streets, infrastructure, sidewalks, pedestrian amenities and other related public improvements along with maintenance and operations expenses.
- Established improvement plan overview and schedule while expanding public involvement.

# Previous Sidewalk Conditions

Non-existent – Disrepair – Non-compliant













# Searching For Solutions



# Funding – Transportation Improvement Projects

- October 31, 2018 applied unsuccessfully for H-GAC TIP Call for Projects.

## MEETING OUTLINE August 21, 2018

1. Introductions
2. Downtown Friendswood Project Background
3. Potential TIP Project and Draft Cost Estimate
4. Discussion



City of Friendswood – Potential TIP Application Discussion

Lauren Griffith Associates



CORE DESIGN STUDIO



G2LD gandy lighting design



Existing Conditions - Sidewalks



Lauren Griffith Associates



CORE DESIGN STUDIO



G2LD gandy lighting design

## DocuSign Envelope ID: 6E7D3206-8CCA-455B-B7EF-BEE680D59627

REGISTERED ACCESSIBILITY SPECIALIST (RAS)  
INSPECTION REQUIRED NO. TABS2021002333

PROJECT NO. STP 2021 (344)  
CSJ: 0976-03-111

NET LENGTH OF ROADWAY=	7,500.00 FT. =	1.420 MI.
NET LENGTH OF BRIDGE =	0.00 FT. =	0.000 MI.
NET LENGTH OF PROJECT=	7,500.00 FT. =	1.420 MI.

LIMITS: FM 2351 TO WHISPERING PINES AVENUE

FOR THE CONSTRUCTION OF MISCELLANEOUS WORK

BEGIN PROJECT  
 CSJ: 0978-03-111  
 STA: 49+00  
 REF MK: 0692+0.938  
 MP = 11.688  
 X = 3175021.3636  
 Y = 13762999.6302

```
END PROJECT
CSJ# 0976-03-111
STA# 124+00
REF MK# 0694+0.342
MP = 13.022
X = 3180213.9909
Y = 13767761.2768
```

DATE: 11/4/2020 9:18:22 AM  
FILE: OFLEO

COUNTY SALVATION PROJ. NO. 0976-03-111  
HWY. NO. FM 510 LETTING DATE FEB. 2021  
DATE ACCEPTED \_\_\_\_\_

ALL BEARING AND COORDINATES SHOWN ARE BASED ON THE TEXAS COORDINATE SYSTEM, SOUTH CENTRAL ZONE (4204). NORTH AMERICAN DATUM OF 1983 (2011 ADJ.) (EPOCH 2010.00). ELEVATIONS ARE BASED ON THE SURFACE OF MEAN SEAS AND MAY BE CONVERTED TO GRID BY DIVIDING BY A COMBINED ADJUSTED FACTOR OF 1.00013.

ALL ELEVATIONS ARE REFERENCED TO THE NORTH AMERICAN DATUM (1983) (2011 ADJ.) (EPOCH 2010.00).

SPECIFICATIONS ADOPTED BY THE TEXAS DEPARTMENT OF TRANSPORTATION, NOVEMBER 2014, AND SPECIFICATION ITEMS LISTED AND DATED AS FOLLOWS: STATE GOVERNOR OF THE PROJECT: RICHARD ROBERTS (2011); FEDERAL AID CONSTRUCTION CONTRACTS (FORM FHWA 1273, MAY 2012).

EXCEPTIONS: NONE  
EQUATIONS: NONE  
RAILROAD CROSSINGS: NONE



11/4/2020

**HDR**

HOR  
Firm Registration No. F-754  
4828 Loop Central Drive, Suite 800  
Houston, Texas 77081-2220  
713.622.9294



RECOMMENDED FOR LETTING: 12/02/2020

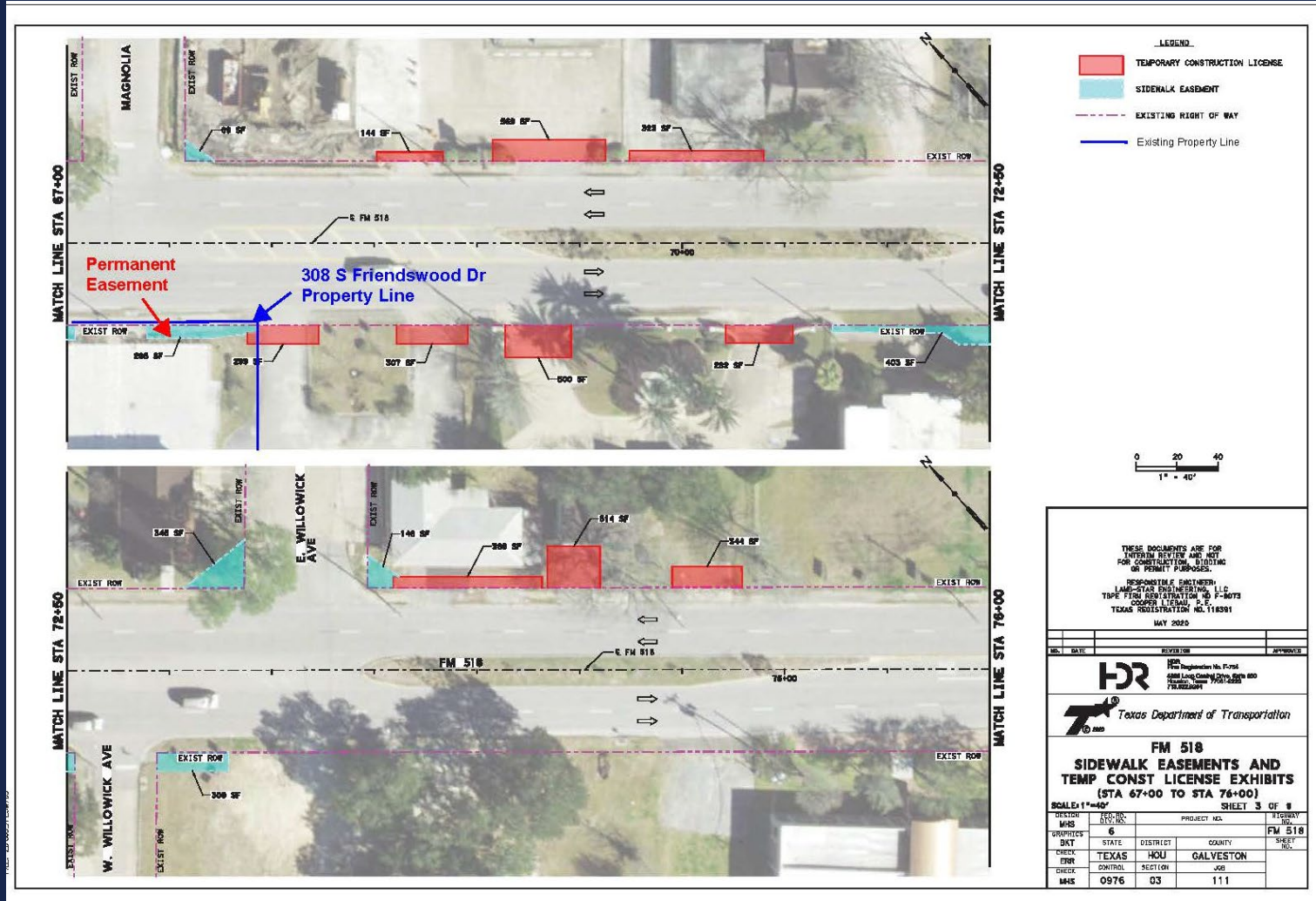
*Sagnik Raha, P.E.*  
PROJECT MANAGER

APPROVED FOR LETTING 1/11/2020

Larry W. Blackburn, P.  
EOD-DISTRICT ENGINEER



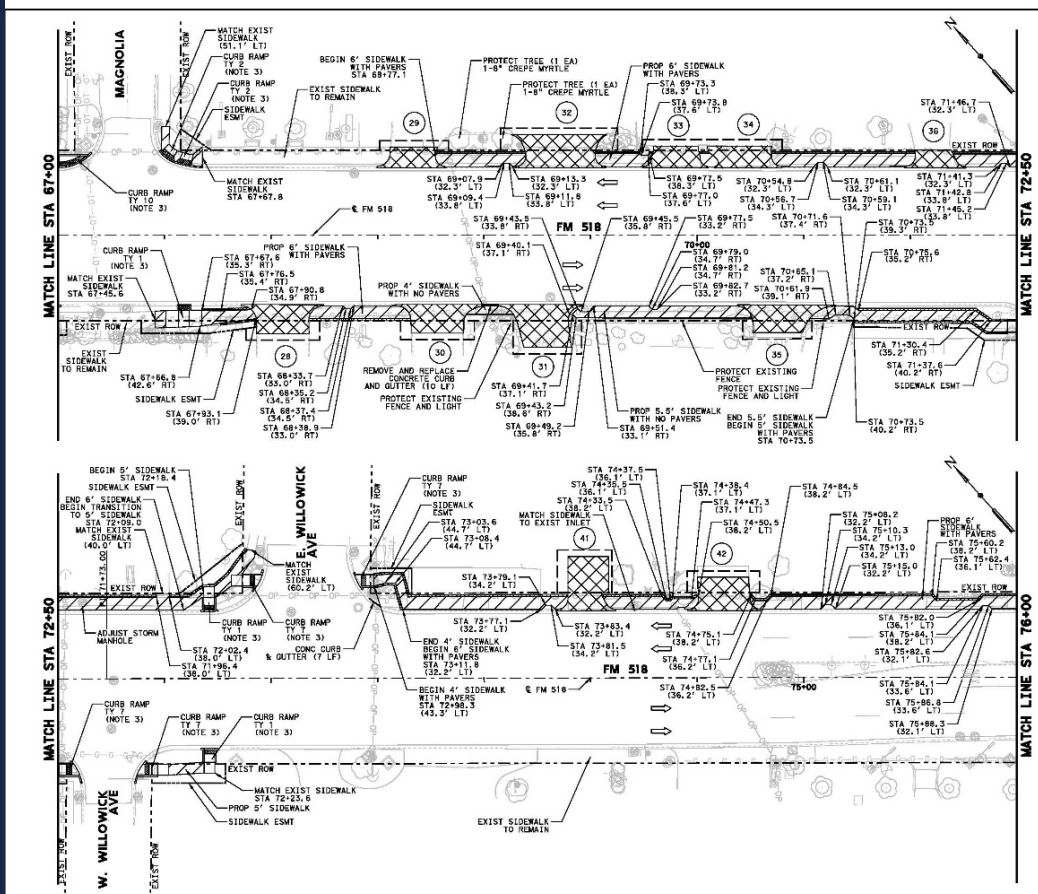
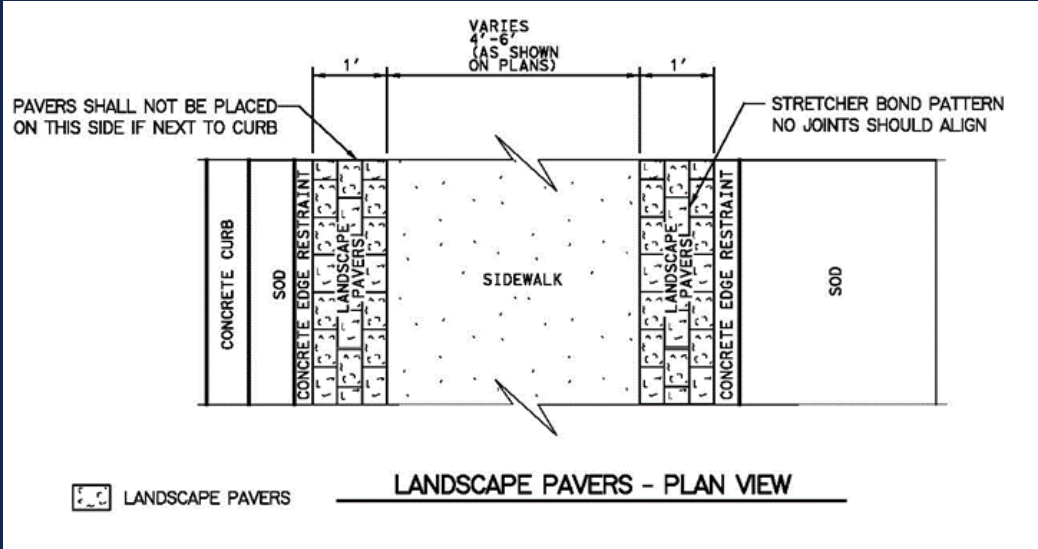
- Construction of pedestrian infrastructure over 2.8 miles.
- Includes Curb Ramps, Sidewalks, Signals & Pedestrian Signals.
- City of Friendswood responsible for obtaining easements and future maintenance.





- August 21, 2019 – TXDOT gauges interest.
- September 16, 2019 Kick-off meeting
- October 24, 2019 Scoping Meeting
- 2020 Completion of Environmental, Surveying & Engineering.
- February 2021 Project Let to Contract.
- May 2021 Project Start
- December 2021 Estimated Project Completion

TXDOT Funding Provided – \$2.8M



**LEGEND**

- TRAFFIC FLOW DIRECTION
- DRIVEWAY NUMBER
- SIDEWALK CONSTRUCTION
- DRIVEWAY CONSTRUCTION
- DETECTABLE WARNING SURFACE
- CHECKERBOARD PLATE
- EXISTING RIGHT OF WAY
- DRIVEWAY EASEMENT
- SIDEWALK EASEMENT

**NOTES**

- SEE "DRIVEWAY LOCATION TABLE" FOR ADDITIONAL INFORMATION.
- MEMOR ADJUSTMENTS TO HORIZONTAL LOCATION OF SIDEWALK MAY BE MADE TO AVOID CONFLICTS WITH UTILITIES, POWER POLES, WATER METERS, LANDSCAPING, TREES, ETC.) AS APPROVED BY THE ENGINEER.
- SEE RAMP LAYOUT SHEETS FOR MORE DETAILS.
- PROPOSED SIDEWALK SHOULD BE 6'-0" WIDE WHEN CONSTRUCTING AGAINST CURB. PROPOSED SIDEWALK SHOULD BE 5'-0" WIDE WHEN CONSTRUCTING 2 FEET OR MORE FROM FACE OF CURB.
- PROTECT TREE ACCORDING TO HOUSTON DISTRICT TREE PROTECTION STANDARD. PROPOSED SIDEWALK TO AVOID OR SIDEWALK CHECKER BOARD DETAIL AS REQUIRED.
- IN AREAS WHERE SIDEWALKS ARE TO REMAIN, REMOVE EXISTING DETECTABLE WARNING PAVES AT ALL INTERSECTIONS AND REPLACE PORTION OF SIDEWALK AS REQUIRED.
- IN AREAS WHERE SIDEWALKS ARE TO REMAIN AND DRIVEWAYS ARE RELOCATED, SIDEWALKS SHALL BE REPLACED ON EACH SIDE OF DRIVEWAY AND THE EXISTING SIDEWALK AS CLOSELY AS POSSIBLE.
- SEE LIGHTING PLANS FOR PLACEMENT OF CONDUIT FOR ILLUMINATION.
- ALL OFFSETS ARE TO EDGE OF CONCRETE SIDEWALK.
- SEE UTILITY LAYOUTS FOR APPROXIMATE LOCATIONS OF UTILITIES AND REQUIRED ADJUSTMENTS.

1" = 40'

**STATE OF TEXAS**  
8/31/2020

NO.	DATE	REVISION	APPROVED
1			

**HR**  
Texas Department of Transportation

**FM 518  
SIDEWALK  
PLAN  
(STA 67+00 TO STA 78+00)**

SCALE 1"=40' SHEET 3 OF 8

SYSTEM	NO.	PROJECT NO.	SECTION
GRAPHICS	6	FM 518	
CHK	DATE	COUNTY	
ERR	TEXAS	GALVESTON	
FILE	CONTROL	SECTION	
NO.	0976	111	51

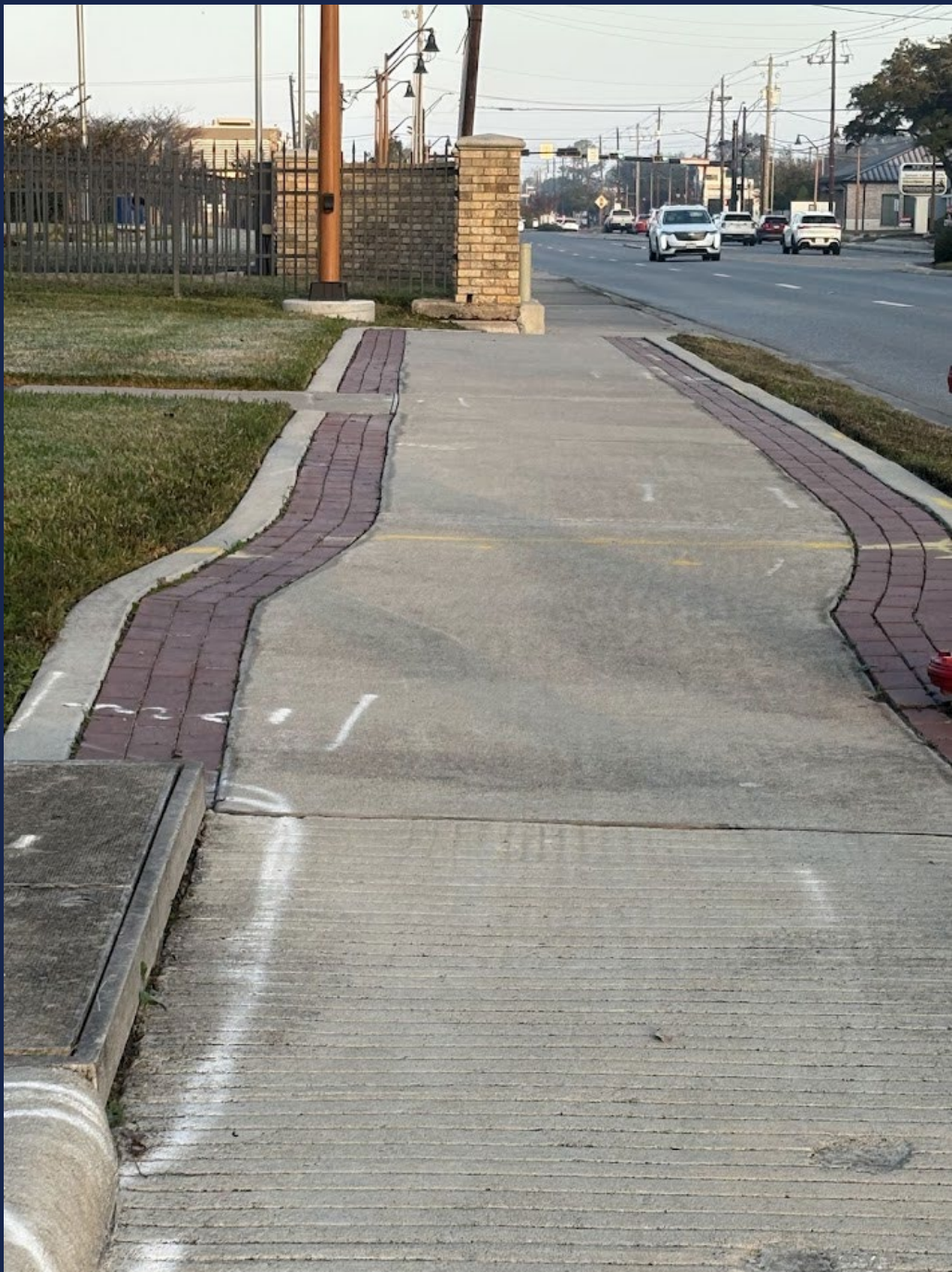
Present Conditions

ADA Compliance +  
Increased Connectivity & Walkability









# Current Challenges







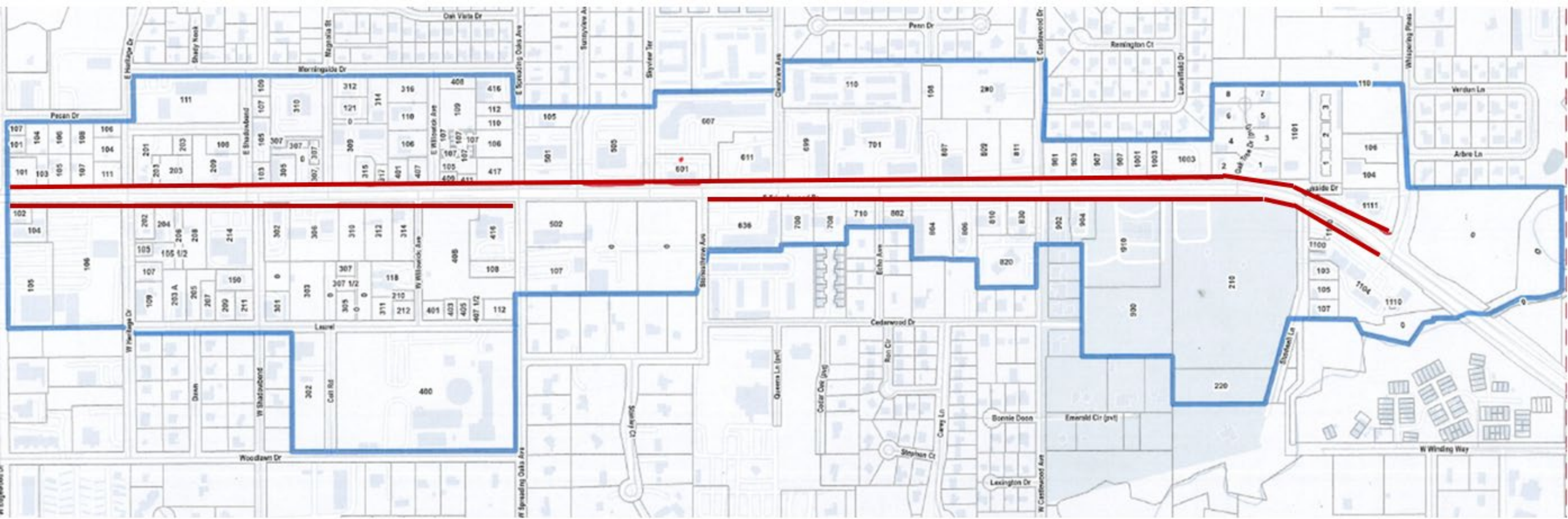








# Project Completion



# Thank You!

[srhea@friendswood.com](mailto:srhea@friendswood.com)

