



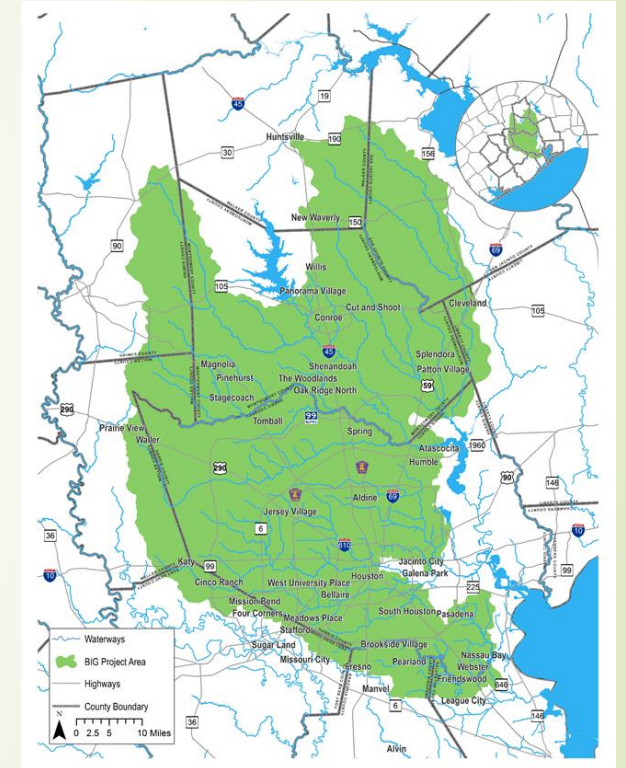
EAST AND WEST FORK OF THE SAN JACINTO RIVER

COORDINATION COMMITTEE MEETING

06/06/2018

AGENDA

- **Call to Order/Introductions**
- **Item One:** **BIG Actions and Activities**
- **Item Two:** TMDL Program Updates
- **Item Three:** East and West Fork Actions and Activities
- **Item Four:** Coordinating Future Implementation
- **Item Five:** Other Business and Next Steps
- **Adjourn**

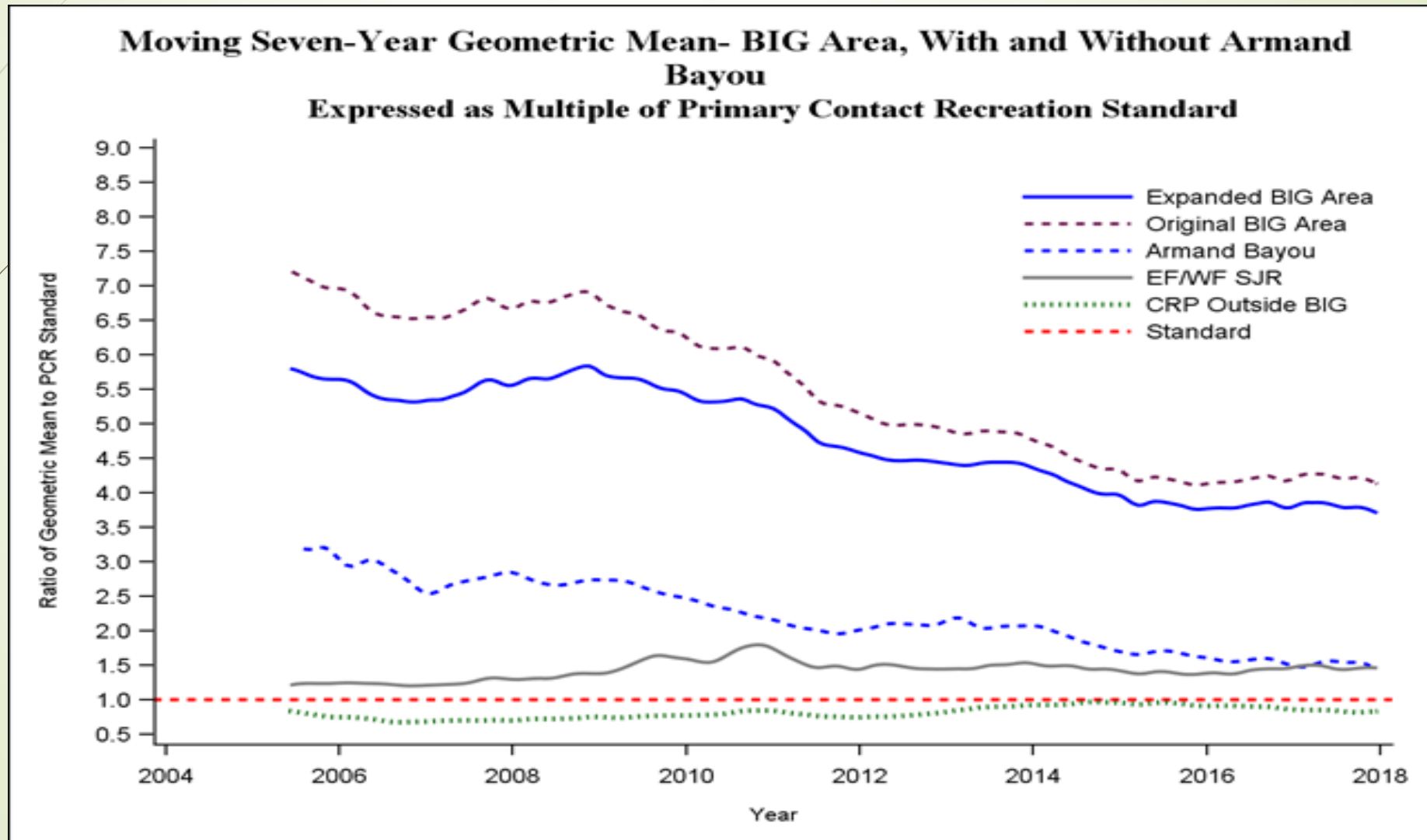


2018 Annual Report Process

- Met with Workgroups
 - Coordination and Policy (2/28 and 5/30)
 - WWTF and SSS (3/20)
 - Stormwater (3/26)
 - Animals and Agriculture (4/26)
 - OSSF and Illicit Discharge (5/2)
 - Research and Monitoring (5/7)

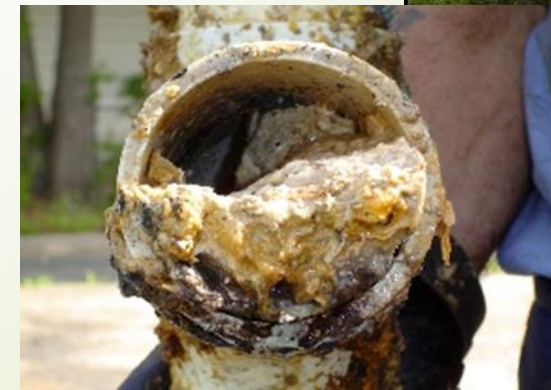


DATA HIGHLIGHTS



Report DATA

- ▶ Data Reporting and Observations
 - ▶ TCEQ and EPA
 - ▶ WWTF Numbers
- ▶ Training and Outreach
 - ▶ Professional Training
 - ▶ Residential Training
 - ▶ General Outreach
- ▶ Other Plan Implementation
 - ▶ IDDE
 - ▶ LID
 - ▶ OSSF Repair/Replace



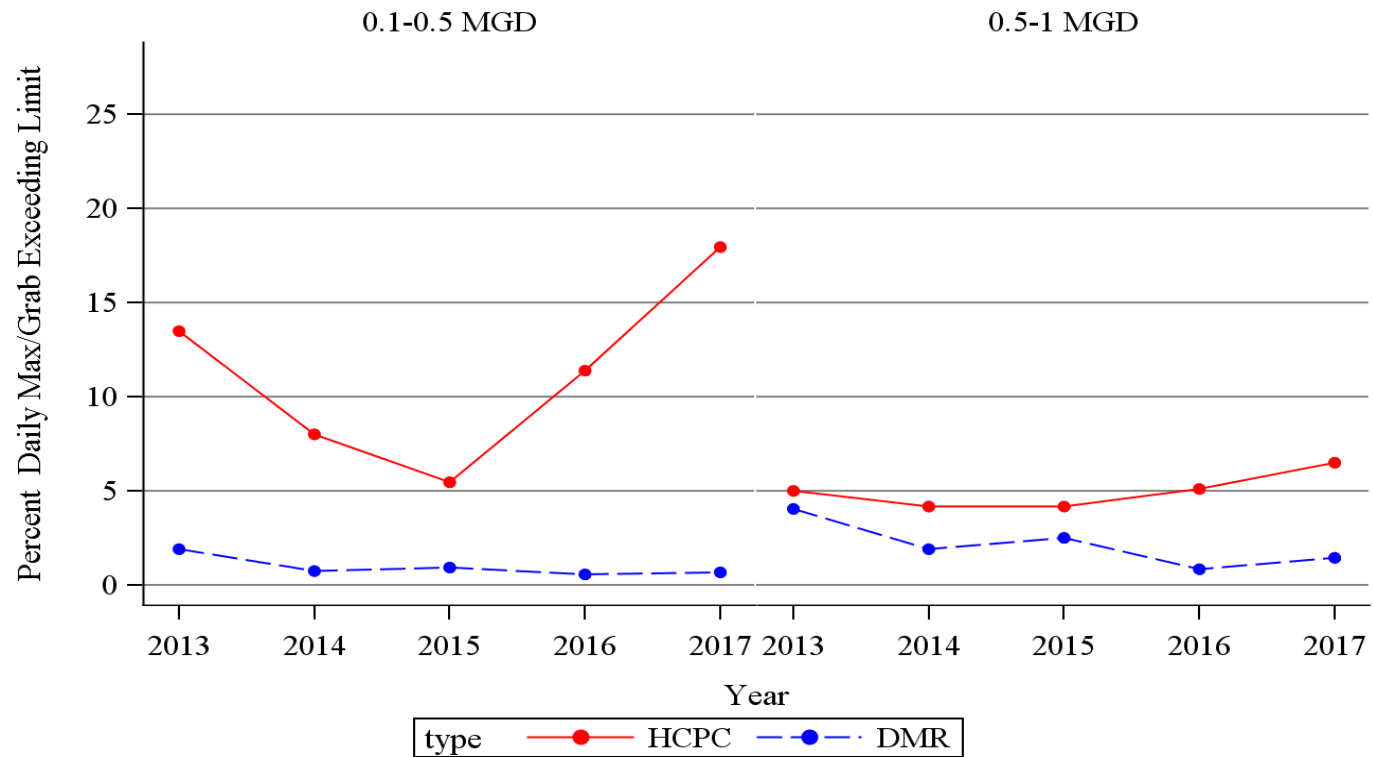
DATA REPORTING AND OBSERVATIONS

Table 1: 2017 Backlog
(Data Source: DMR)

Variable
Total Results Reported
Total Exceeding Limit
Percent Exceedance

Analysis of Discharge Monitoring Report Data Obtained March 2018
Analysis of Harris County PCS Domestic WWTF Inspection Data- BIG Area of Harris County

Percent Daily Max/Grab Exceedance, DMR and HCPC Data Comparison



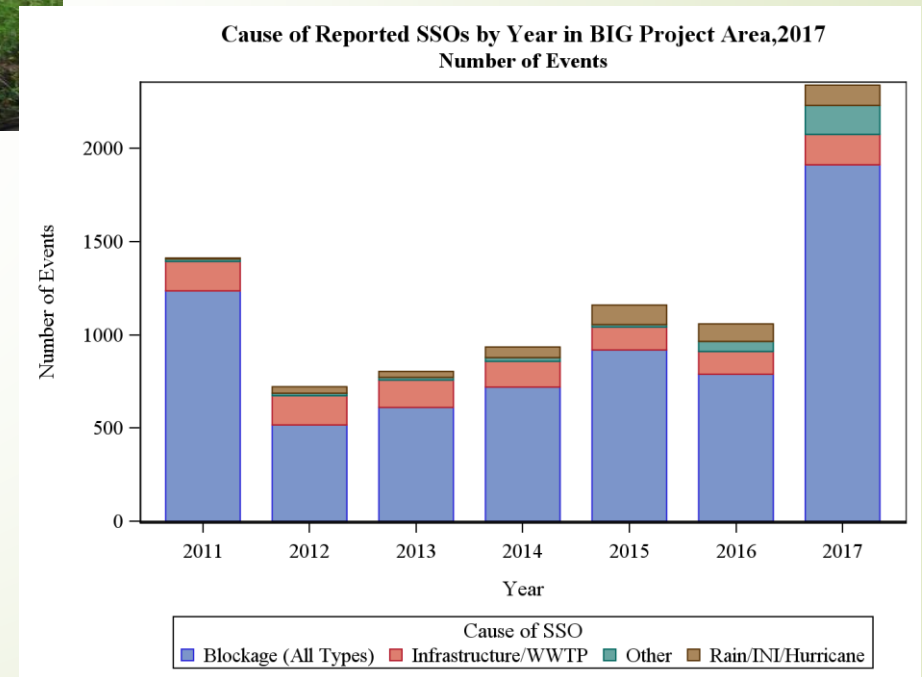
Control Services	
HCPC Inspection Daily Max PCT Exceedance	Percent Compliance, HCPC Samples
0.0	100
15.1	84.9
17.9	82.1
6.5	93.5
6.0	94.0
0.0	100
0.0	100

0.1-0.5 MGD	116	5.7	78.1	85
5-10 MGD	149	6.0	94.0	4
> 10 MGD	96	17.7	82.3	5

DATA REPORTING AND OBSERVATIONS

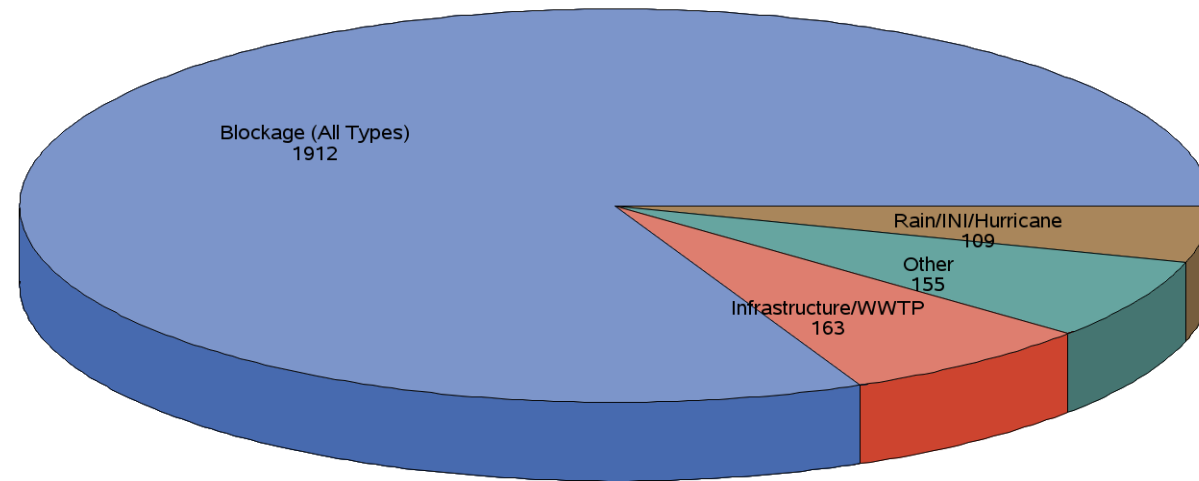


Year	Number of SSOs Reported	Estimated Volume (Thousand Gallons)
2011	1412	823
2012	722	1186
2013	806	1694
2014	937	2276
2015	1161	4296
2016	1060	2616
2017	2339	13719



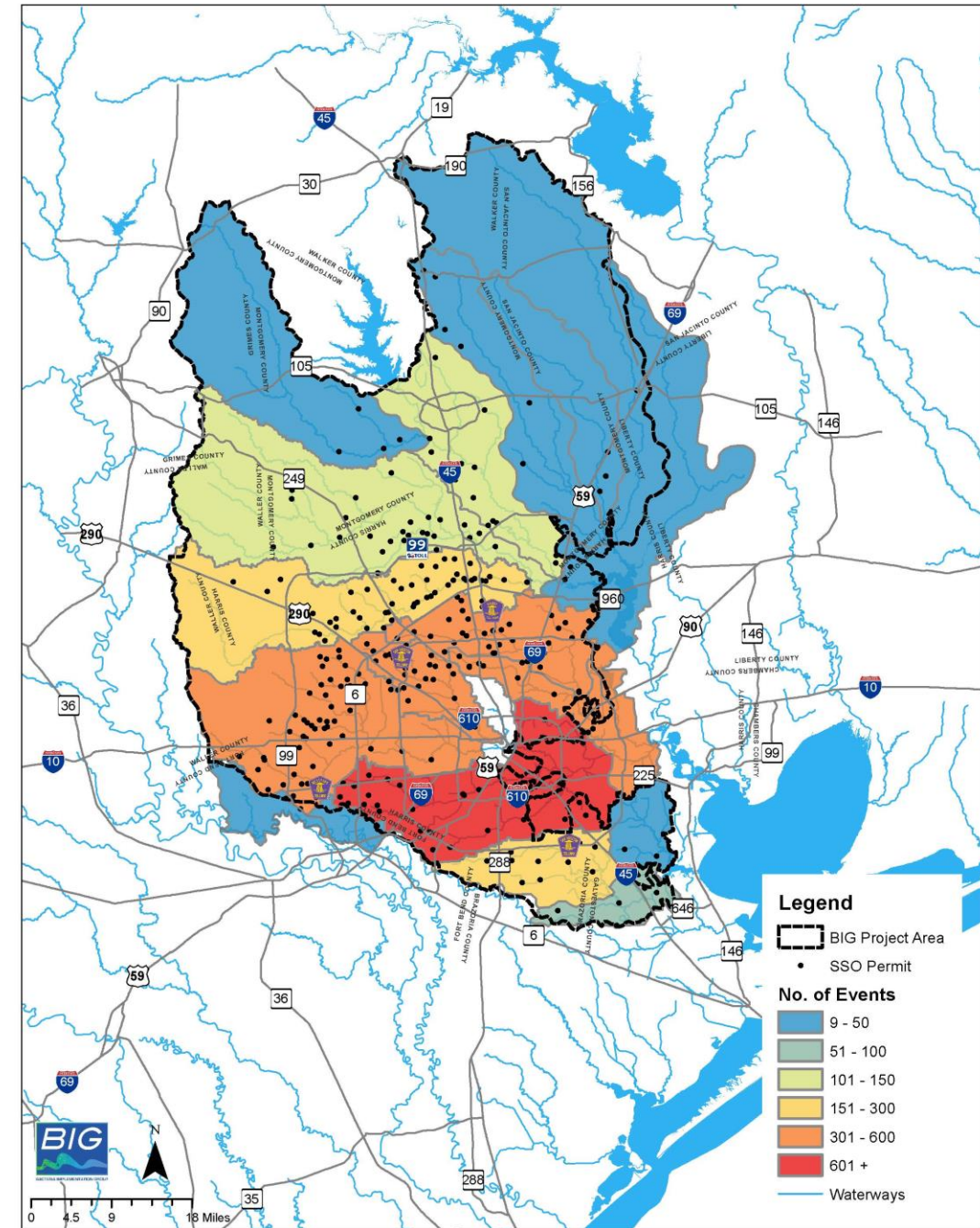
DATA REPORTING AND OBSERVATIONS

Cause of Reported SSOs by Year in BIG Project Area, 2017
Number of Events

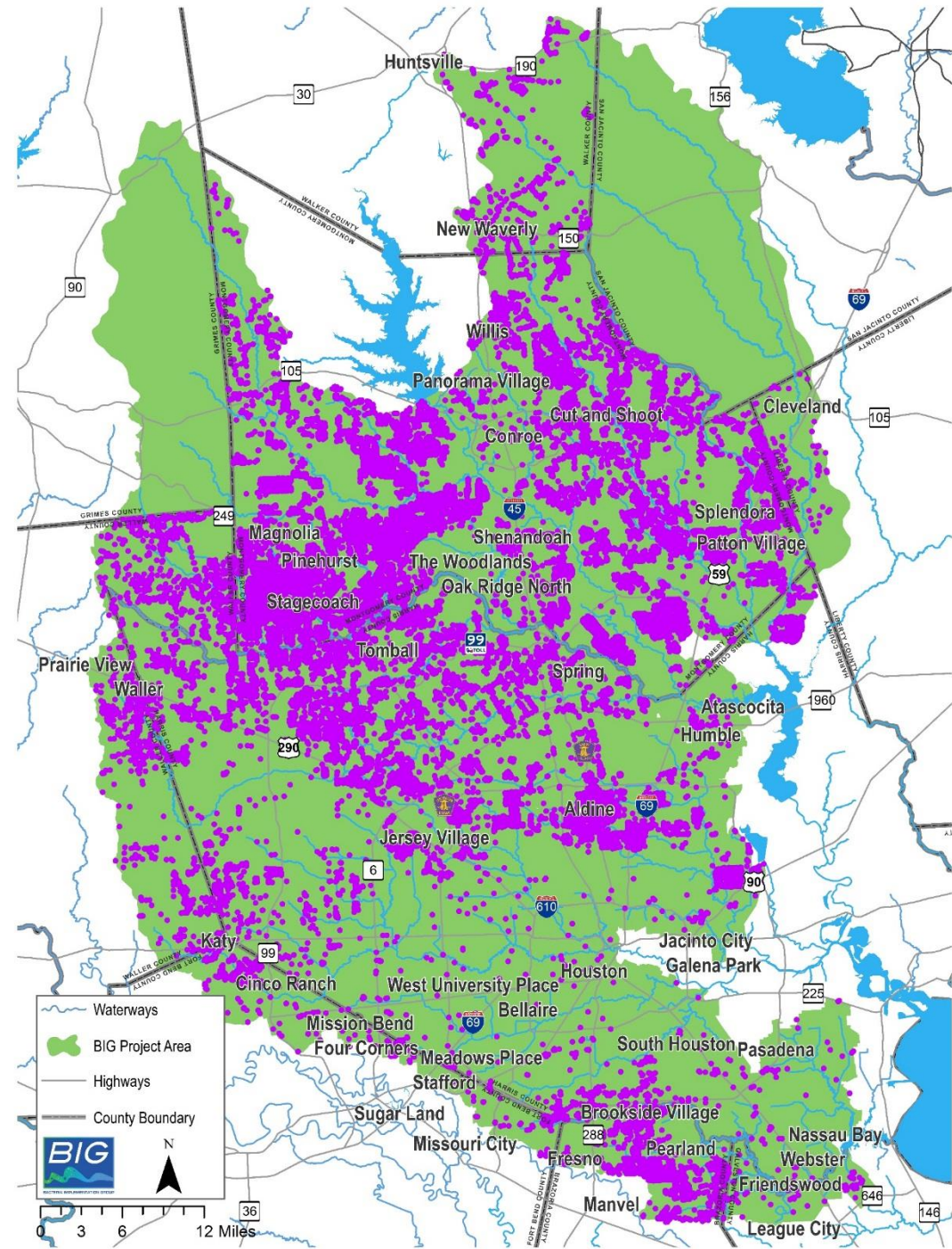


DATA REPORTING AND OBSERVATIONS

Sanitary Sewer Overflow (SSO) Density Map (2012-2016)



DATA REPORTING AND OBSERVATIONS



TRAINING OUTREACH

▶ Training/Education

▶ Professional

- ▶ CWI Workshops
- ▶ OSSF Training
- ▶ LID

▶ Residential/Ag.

- ▶ OSSF Training
- ▶ Rain Barrels
- ▶ Feral Hog
- ▶ BMP
- ▶ TST



OTHER PLAN IMPLEMENTATION

- Illicit Discharge Detection and Elimination
 - H-GAC/City of Houston/SJRA
- Low Impact Development Outreach
 - H-GAC LID Pearland
- OSSF Repair/Replace
 - Harris County/East Aldine Management District
 - H-GAC SEP



SPOTLIGHT ON SUCCESS

- BIG Expansion
- Top 5/Least 5
- MS4 ?
- City Infrastructure ?
- Boater Waste ?



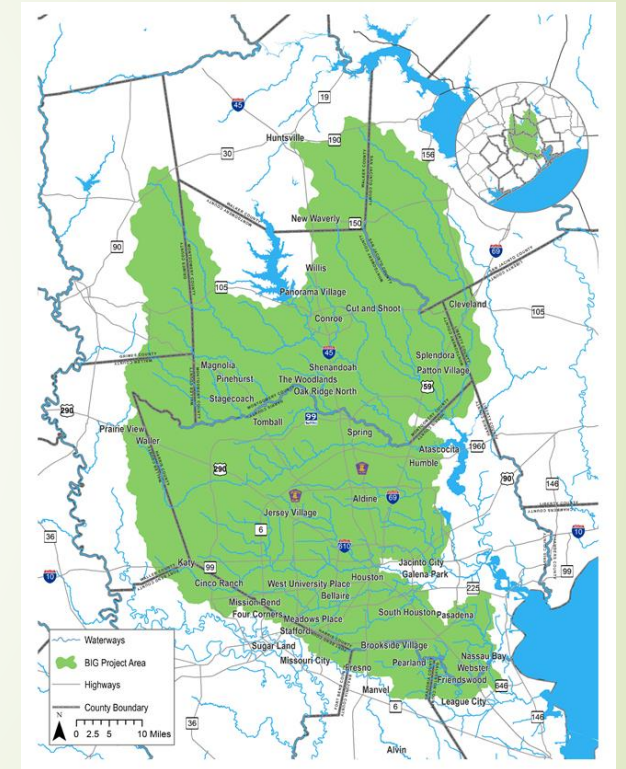
NEXT STEPS

- Coordination and Policy (July)
- WWTF/SSS, OSSF/Illicit, Animals/Agriculture (August)
- Coordination and Policy (Sept.)
- BIG (Oct.)



AGENDA

- **Call to Order/Introductions**
- **Item One:** BIG Actions and Activities
- **Item Two:** **TMDL Program Update**
- **Item Three:** East and West Fork Actions and Activities
- **Item Four:** Coordinating Future Implementation
- **Item Five:** Other Business and Next Steps
- **Adjourn**



Mound Creek: Additional Indicator Bacteria TMDL in the Lake Houston Watershed

TCEQ TMDL Project Manager

Jason Leifester

Project Staff:

Jimmy Millican

Stephanie Brady

16

Texas Institute for Applied Environmental Research (TIAER)
Tarleton State University
Stephenville, Texas

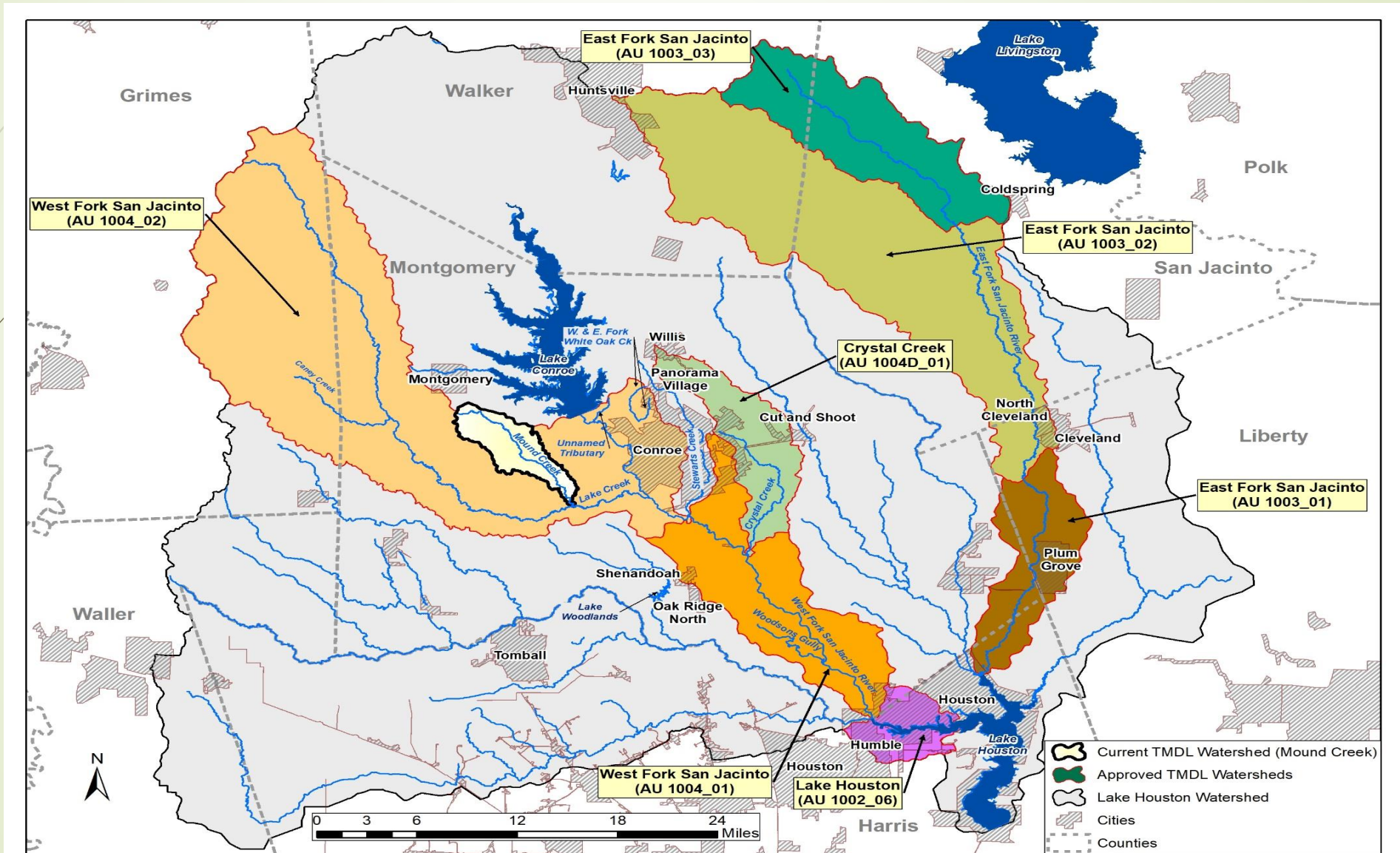
June 5, 2018

Previously Completed Indicator Bacteria TMDLs for Watersheds in the East and West Fork San Jacinto River and Tributaries

Adopted by TCEQ: Aug. 24, 2016; Approved by EPA: Oct. 7, 2016

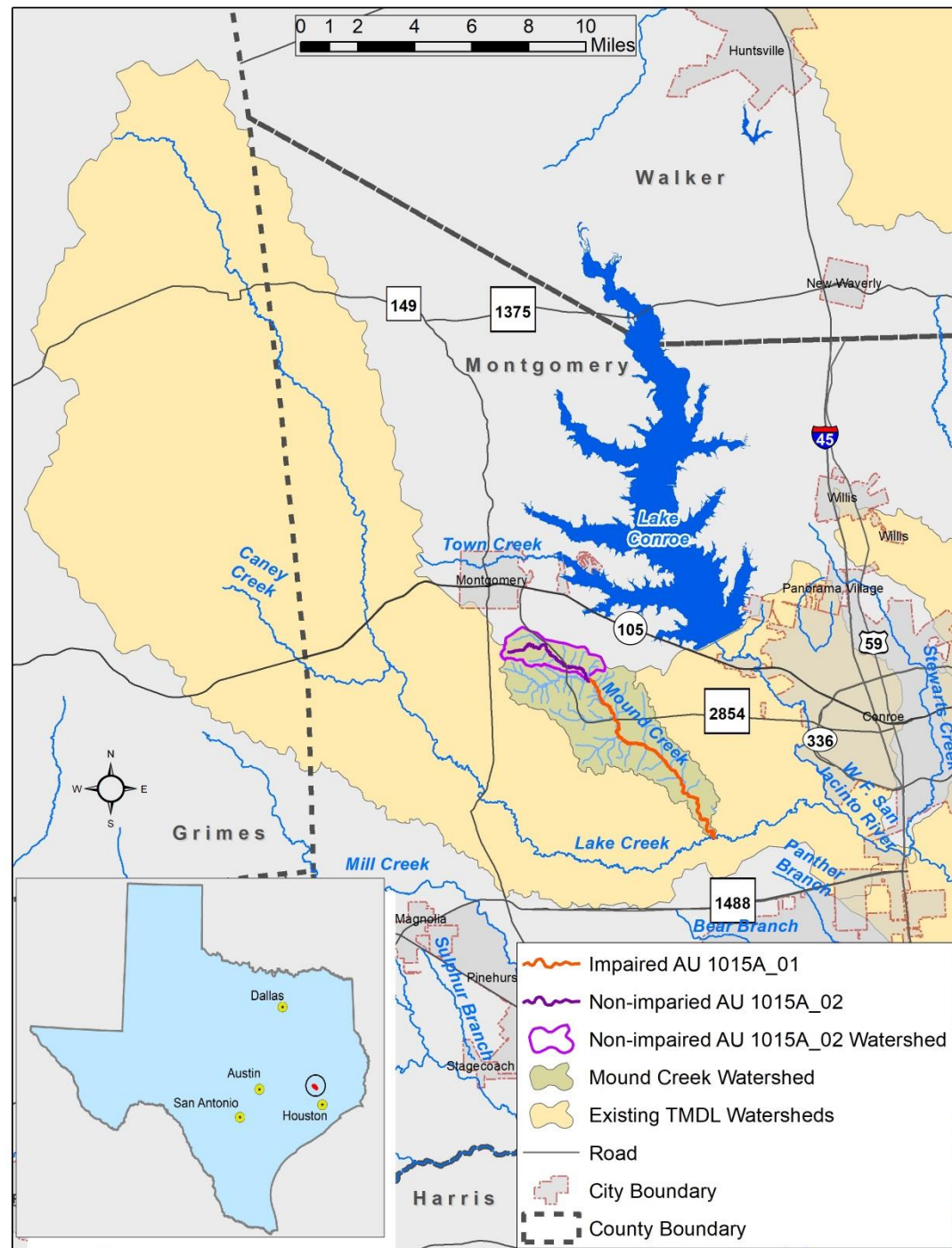
Segment Name	Segment Number	Assessment Unit (AU)
Lake Houston	1002	1002_06
East Fork San Jacinto	1003	1003_01, 02 & 03
West Fork San Jacinto	1004	1004_01 & 02
Crystal Creek	1004D	1004D_01

Lake Houston Watershed showing areas of seven completed TMDLs



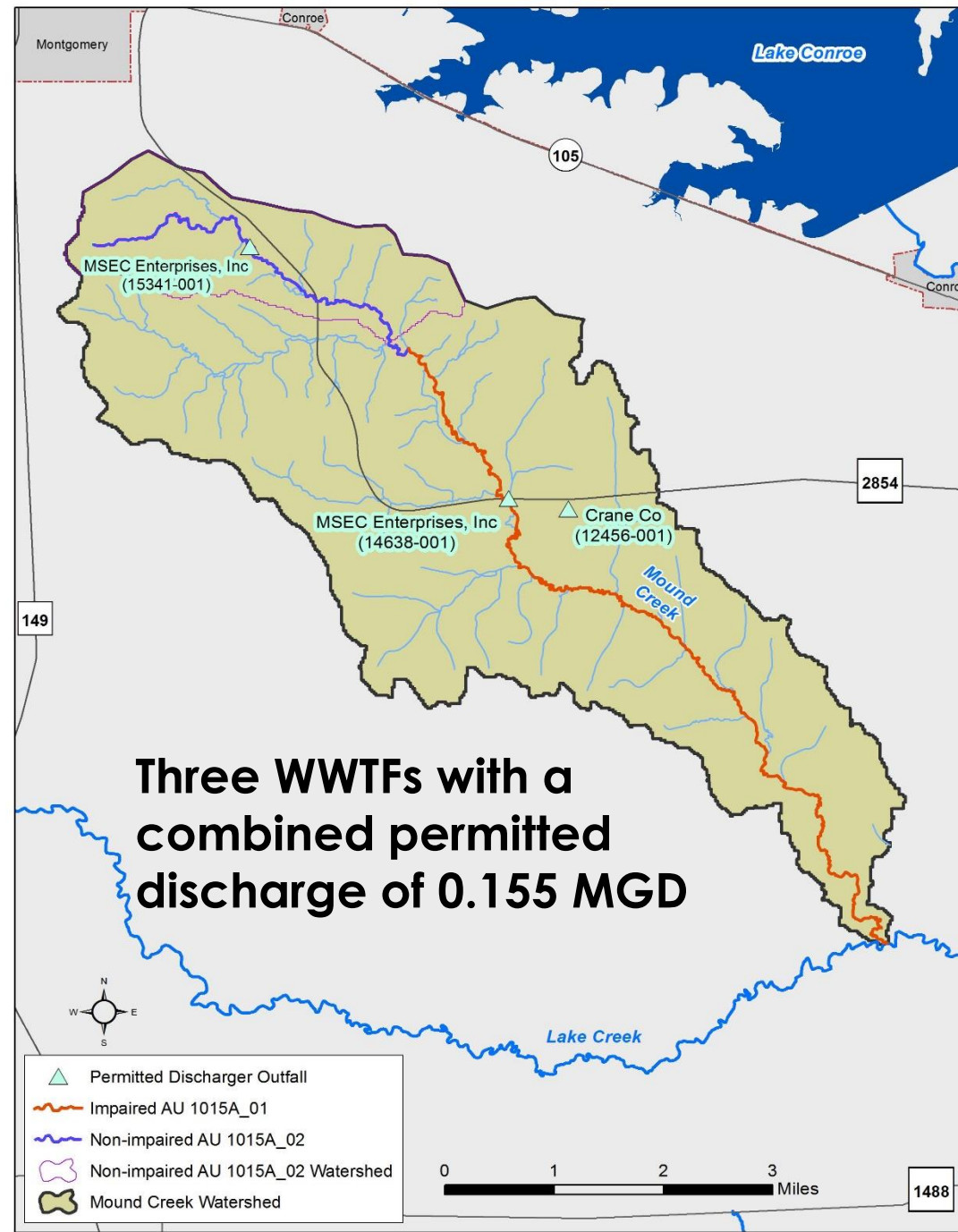
*Addendum to Seven TMDLs for
Indicator Bacteria in Lake Houston,
East & West Fork San Jacinto River,
and Crystal Creek Watersheds*

- Project water body
 - Mound Creek (1015A_01)
- Approach for TMDL – FDCs/LDCs



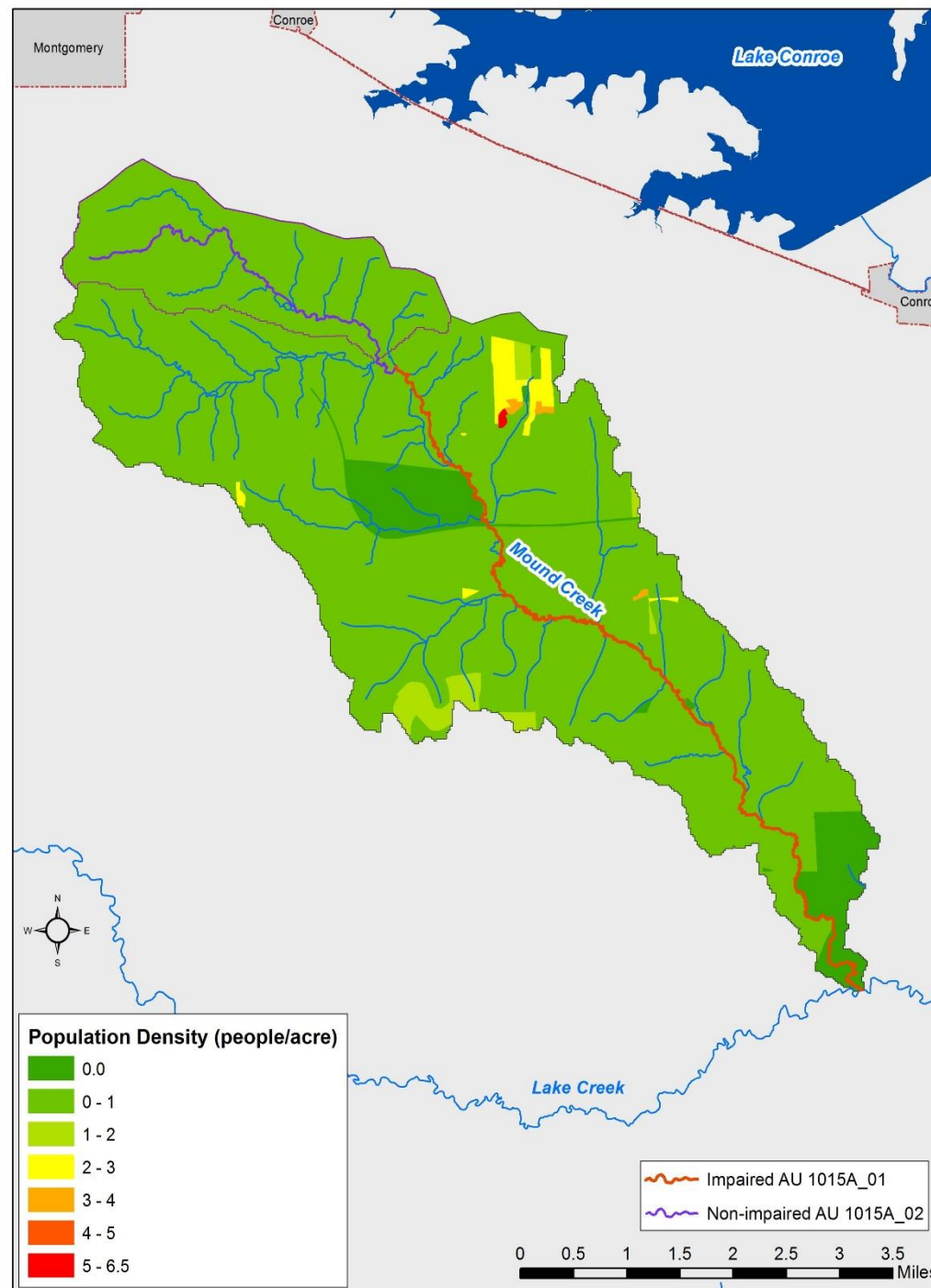
Summary Integrated Report Findings for *E. coli* Assessment (criterion = 126 MPN/100 mL)

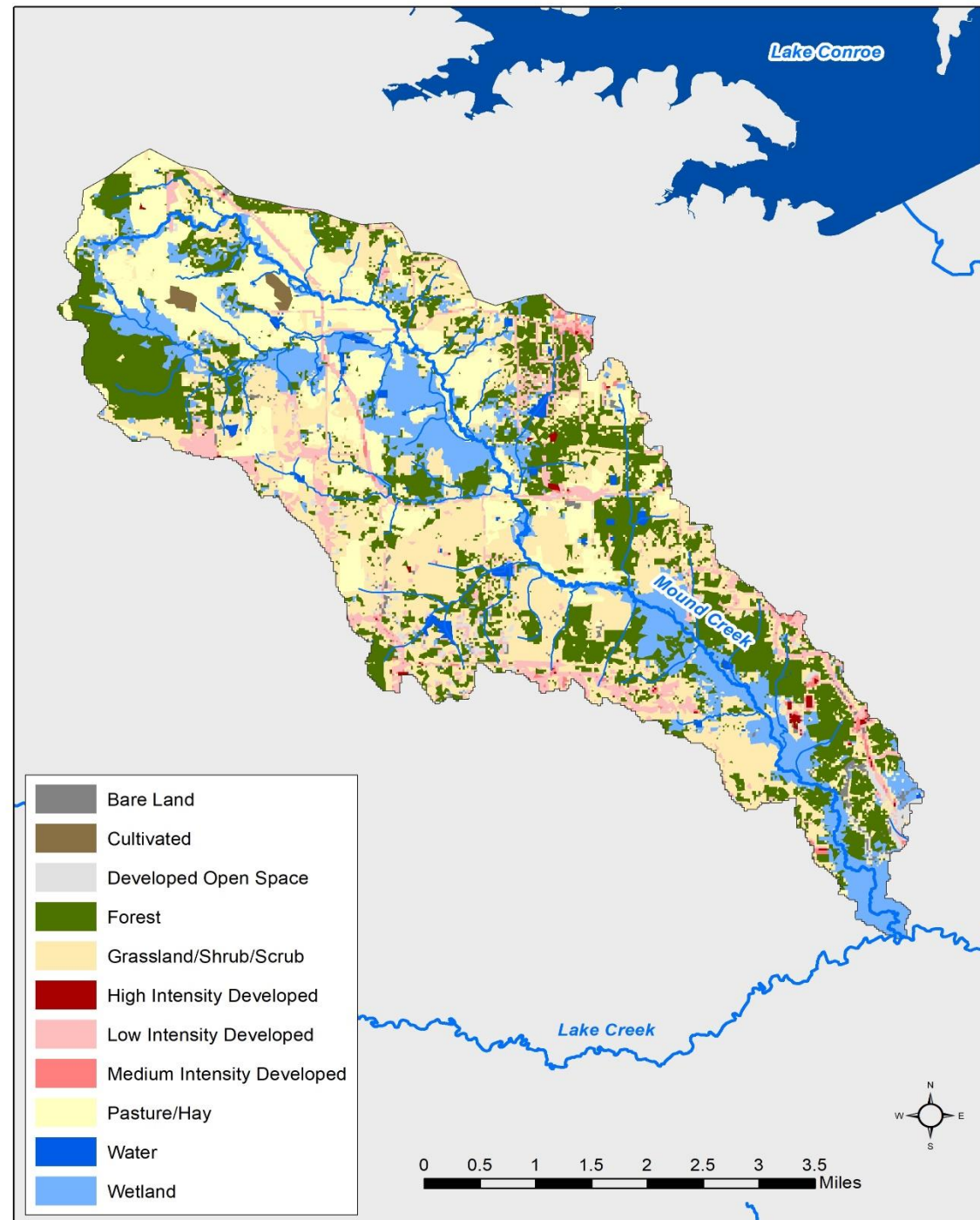
Integrated Report Year	AU	Station	No. of Samples	Data Date Range	Geometric Mean (MPN/100 mL)
2014	1015A_01	17937	21	2005-2012	387
2016 (draft)	1015A_01	17937	27	2007-2014	334

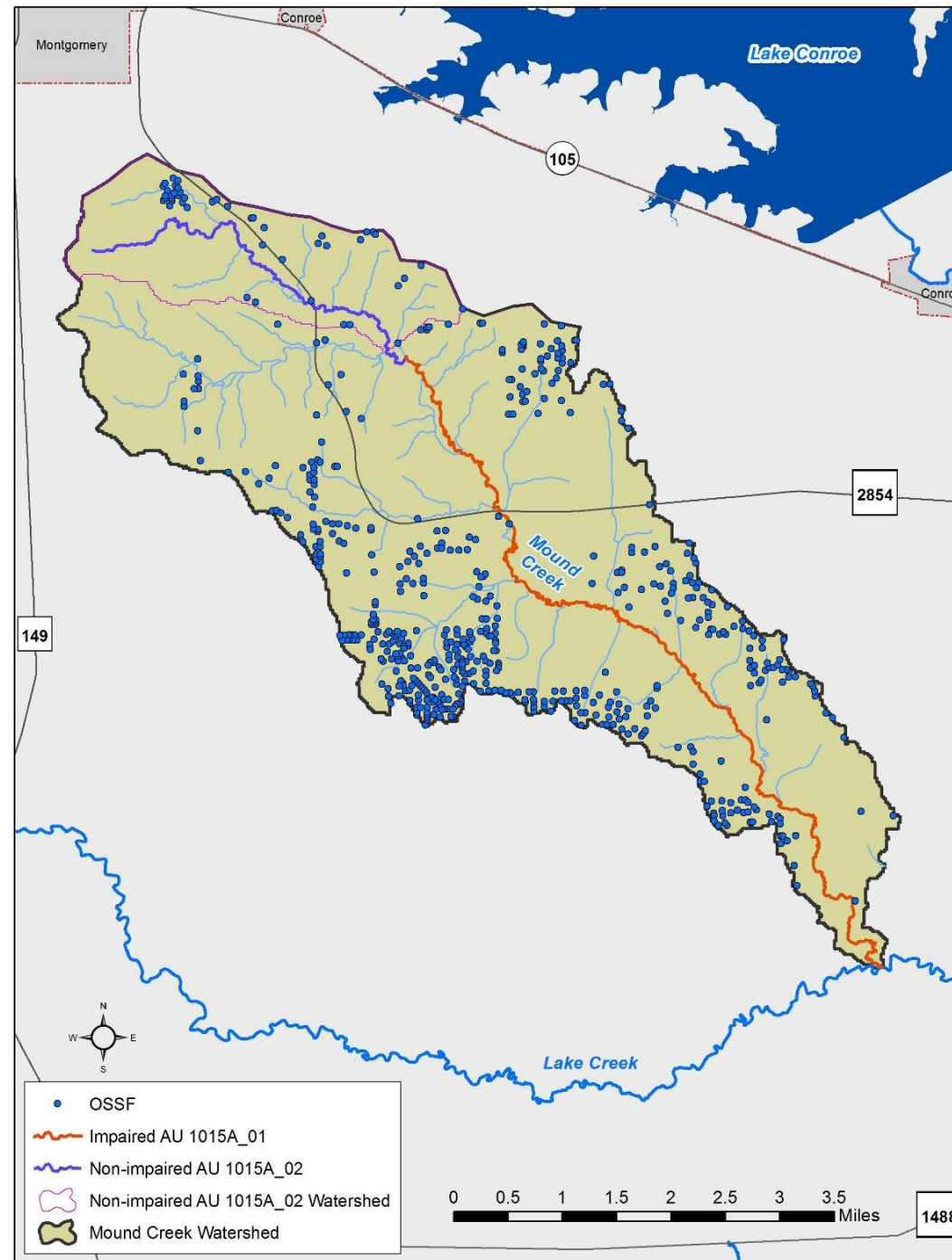


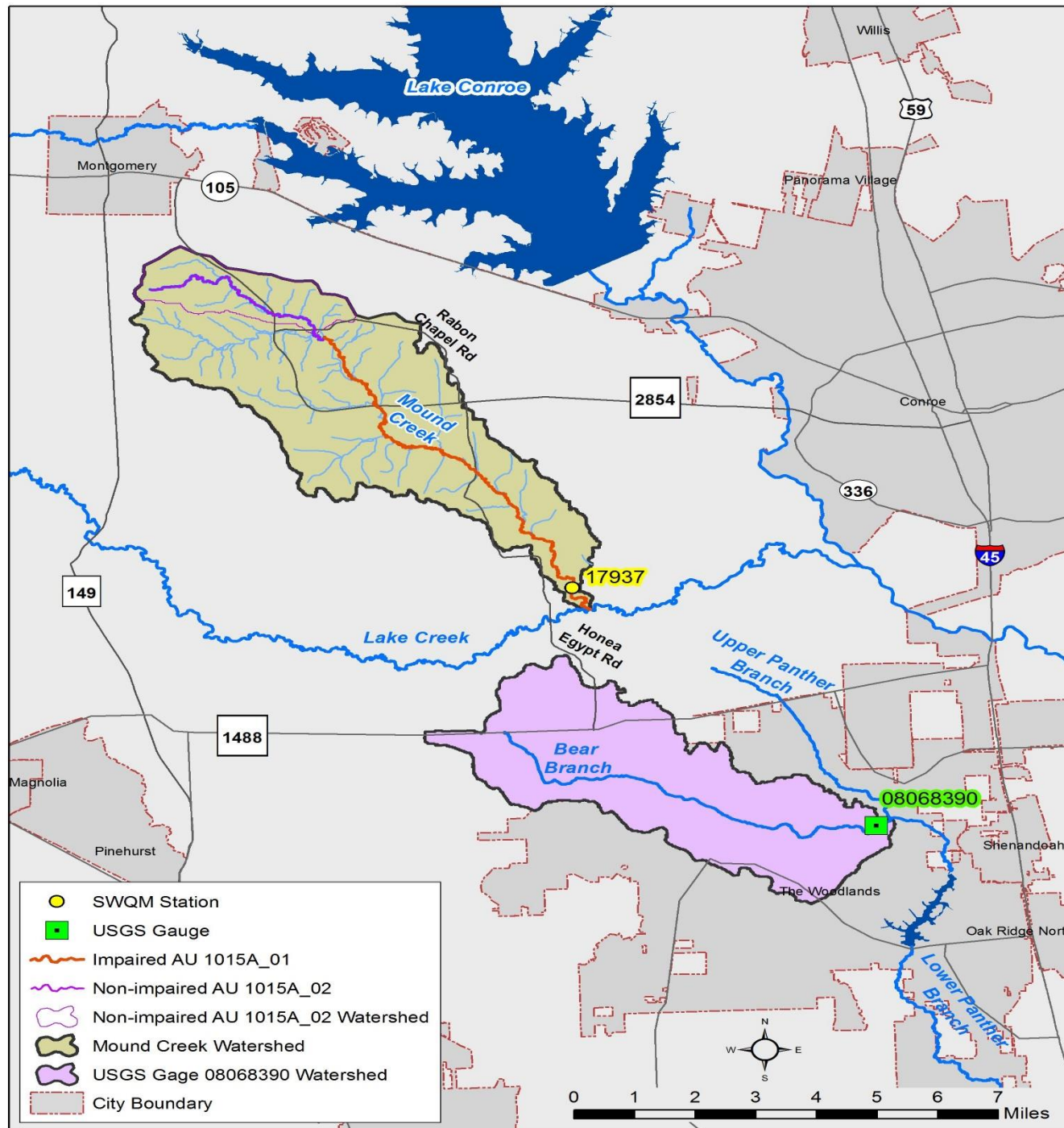
Estimated Area under Stormwater Permit Regulations

AU Area within 2010 Urbanized Areas (acres)	AU Area under construction and Industrial stormwater permits (acres)	AU watershed area (acres)	Percentage of drainage area under stormwater regulation (%)
0	108	13,421	0.80









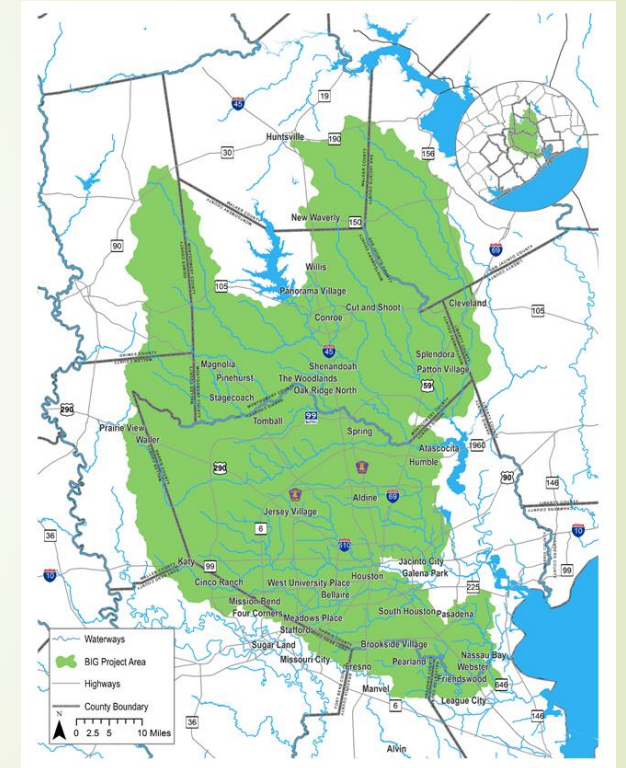
Status of TMDL Development

28

- Technical Support Document (TSD) will be completed by the end of Aug. 2018
- TSD will be posted on TCEQ website (TCEQ will notify BIG when they are available for public review and comment)
- TCEQ will use TSD to develop addenda to be included in Water Quality Management Plan updates

AGENDA

- **Call to Order/Introductions**
- **Item One:** BIG Actions and Activities
- **Item Two:** TMDL Program Updates
- **Item Three:** **East and West Fork Actions and Activities**
- **Item Four:** **Coordinating Future Implementation**
- **Item Five:** Other Business and Next Steps
- **Adjourn**



ADJOURN

- Next Meeting
 - October 23, 2018

Steven Johnston
Steven.johnston@h-gac.com
281-681-2579

