

Internet Service with
Speeds of at Least
10 Mbps Download/
1 Mbps Upload

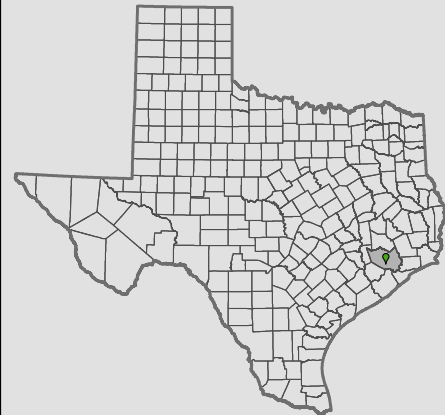
HARRIS
COUNTY
TEXAS

Household
Availability

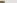
Unserved Households

97.87%

30,595



 County Boundary

 Municipal Boundary Federal Land

—— Local Road

 Water

*Fixed, Terrestrial Non-Mobile
Internet Service*

Detailed Service Areas

 FCC Service Availability

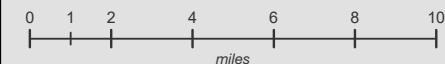
**CONNECTED
NATION[®]**
Texas

Published December 18, 2020

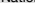
Broadband data displayed on this map are developed from a combination of direct provider outreach and data collection, FCC Form 477 broadband deployment filings, and independent research conducted by Connected Nation Texas. If a broadband provider was unwilling or unable to supply granular data and a detailed service area could not be developed, the provider's service availability is represented by FCC Form 477 data, a format which tends to be overstated. This map is not a guarantee of internet service availability. Mobile and satellite services may also be available.

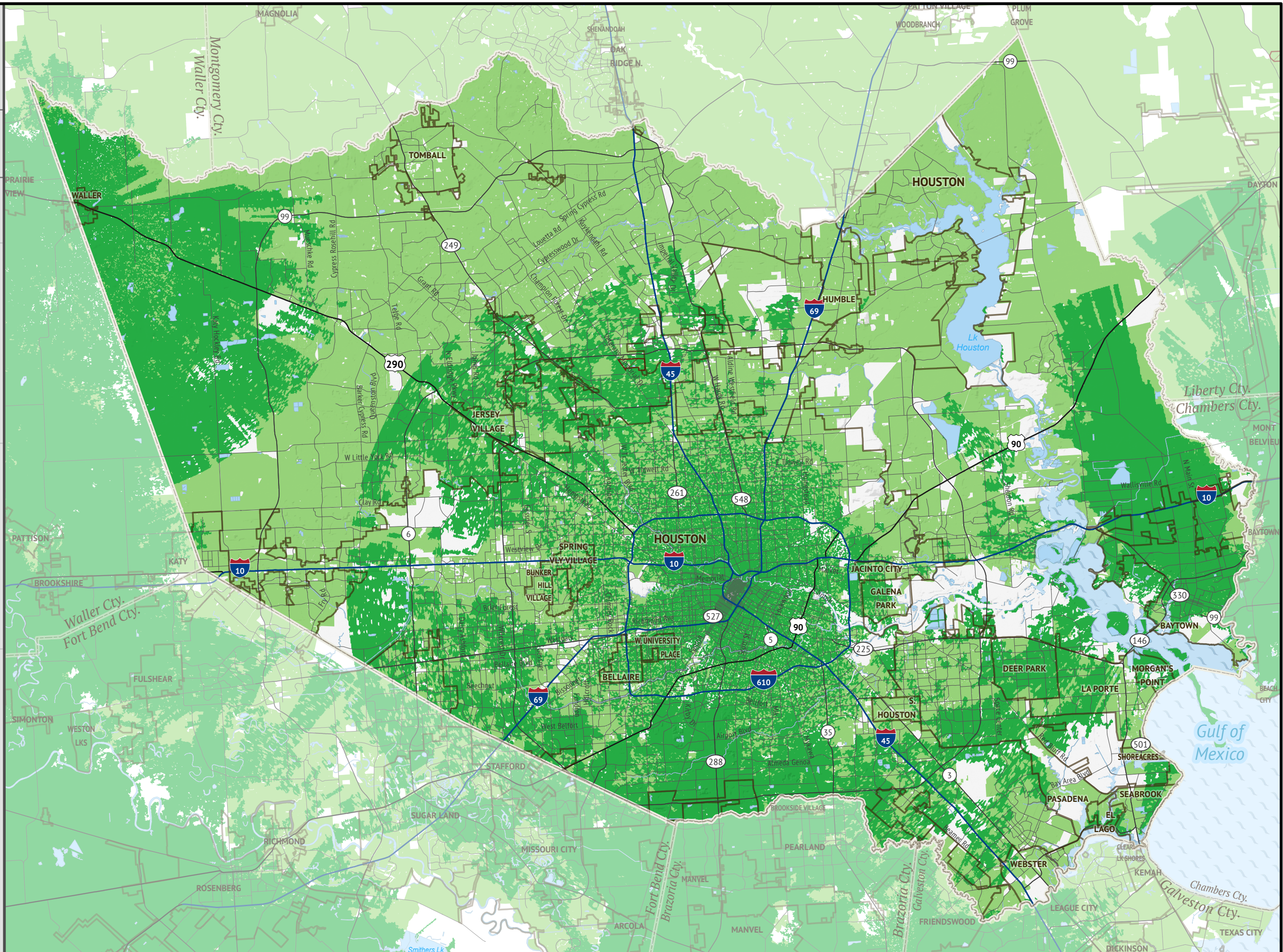
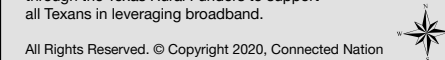
The current FCC definition of broadband is a minimum speed of 25 Mbps (Megabits per second) download and 3 Mbps upload.

Please submit feedback regarding any possible mapping inaccuracies at <https://connectednation.org/texas/feedback>. Updates to this map will occur in July 2021.



Connected Nation Texas is a statewide initiative funded through the Texas Rural Funders to support all Texans in leveraging broadband.

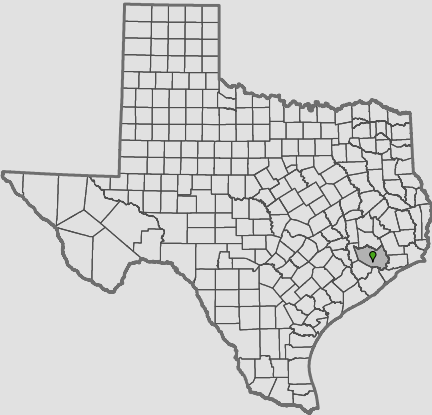
All Rights Reserved. © Copyright 2020, Connected Nation 



Broadband Service with
Speeds of at Least
25 Mbps Download/
3 Mbps Upload

**HARRIS
COUNTY
TEXAS**

Household Availability	Unserved Households
97.59%	34,625



- County Boundary
- Municipal Boundary
- Federal Land
- Local Road
- Water

*Fixed, Terrestrial Non-Mobile
Broadband Service*

- Detailed Service Areas
- FCC Service Availability

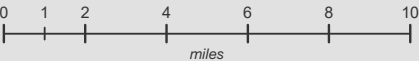


Published December 18, 2020

Broadband data displayed on this map are developed from a combination of direct provider outreach and data collection, FCC Form 477 broadband deployment filings, and independent research conducted by Connected Nation Texas. If a broadband provider was unwilling or unable to supply granular data and a detailed service area could not be developed, the provider's service availability is represented by FCC Form 477 data, a format which tends to be overstated. This map is not a guarantee of internet service availability. Mobile and satellite services may also be available.

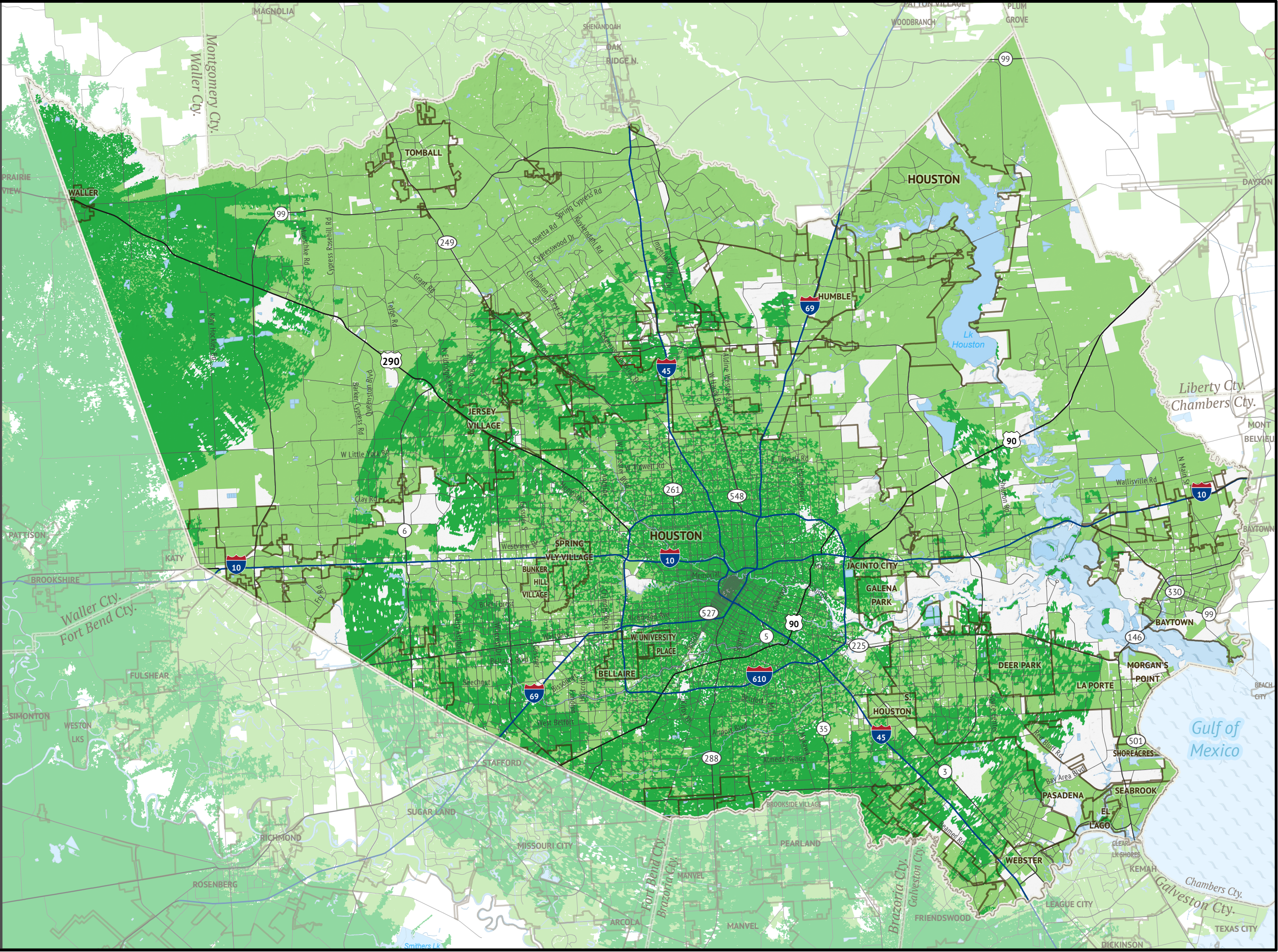
The current FCC definition of broadband is a minimum speed of 25 Mbps (Megabits per second) download and 3 Mbps upload.

Please submit feedback regarding any possible mapping inaccuracies at <https://connectednation.org/texas/feedback>. Updates to this map will occur in July 2021.



Connected Nation Texas is a statewide initiative funded through the Texas Rural Funders to support all Texans in leveraging broadband.

All Rights Reserved. © Copyright 2020, Connected Nation



Broadband Service with
Speeds of at Least
50 Mbps Download/
5 Mbps Upload

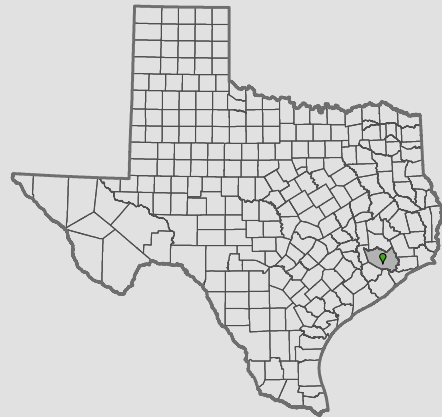
HARRIS
COUNTY
TEXAS

Household Availability


97.47%

Unserved Households

36,235



 County Boundary

 Municipal Boundary Federal Land

—— Local Road

 Water

*Fixed, Terrestrial Non-Mobile
Broadband Service*

Detailed Service Areas

FCC Service Availability

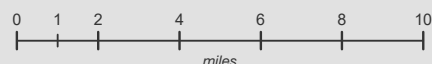
**CONNECTED
NATION[®]**
Texas

Published December 18, 2020

Broadband data displayed on this map are developed from a combination of direct provider outreach and data collection, FCC Form 477 broadband deployment filings, and independent research conducted by Connected Nation Texas. If a broadband provider was unwilling or unable to supply granular data and a detailed service area could not be developed, the provider's service availability is represented by FCC Form 477 data, a format which tends to be overstated. This map is not a guarantee of internet service availability. Mobile and satellite services may also be available.

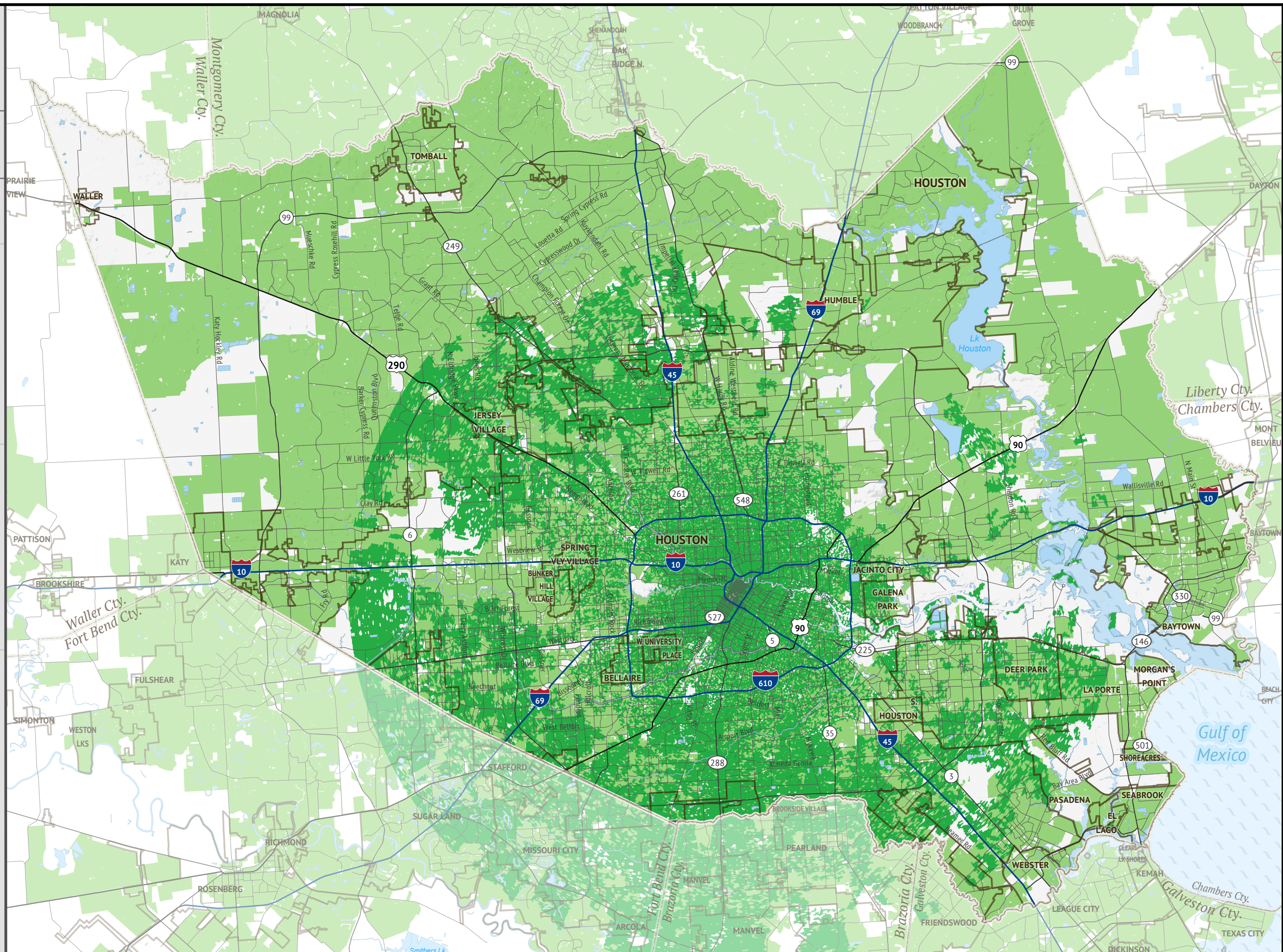
The current FCC definition of broadband is a minimum speed of 25 Mbps (Megabits per second) download and 3 Mbps upload.

Please submit feedback regarding any possible mapping inaccuracies at <https://connectednation.org/texas/feedback>. Updates to this map will occur in July 2021.



Connected Nation Texas is a statewide initiative funded through the Texas Rural Funders to support all Texans in leveraging broadband.

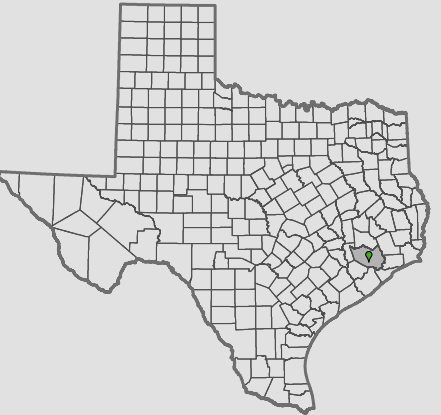
All Rights Reserved. © Copyright 2020, Connected Nation



Broadband Service with
Speeds of at Least
100 Mbps Download/
10 Mbps Upload

**HARRIS
COUNTY
TEXAS**

Household Availability	Unserved Households
94.98%	71,995



- County Boundary
- Municipal Boundary
- Federal Land
- Local Road
- Water

*Fixed, Terrestrial Non-Mobile
Broadband Service*

- Detailed Service Areas
- FCC Service Availability



Published December 18, 2020

Broadband data displayed on this map are developed from a combination of direct provider outreach and data collection, FCC Form 477 broadband deployment filings, and independent research conducted by Connected Nation Texas. If a broadband provider was unwilling or unable to supply granular data and a detailed service area could not be developed, the provider's service availability is represented by FCC Form 477 data, a format which tends to be overstated. This map is not a guarantee of internet service availability. Mobile and satellite services may also be available.

The current FCC definition of broadband is a minimum speed of 25 Mbps (Megabits per second) download and 3 Mbps upload.

Please submit feedback regarding any possible mapping inaccuracies at <https://connectednation.org/texas/feedback>. Updates to this map will occur in July 2021.

0 1 2 4 6 8 10
miles

Connected Nation Texas is a statewide initiative funded through the Texas Rural Funders to support all Texans in leveraging broadband.

All Rights Reserved. © Copyright 2020, Connected Nation

