

Status of Additions to Indicator Bacteria TMDLs in the Lake Houston Watershed

TCEQ TMDL Project Manager

Jason Leifester

Project Staff:

Jimmy Millican

Todd Adams

Texas Institute for Applied Environmental Research (TIAER)
Tarleton State University
Stephenville, Texas

June 4, 2019

Acknowledgements

- Agency Lead:
Texas Commission on Environmental Quality (TCEQ)
- Support Funding:
U.S. Environmental Protection Agency (EPA)

Major Presentation Topics

- Previously completed TMDLs
- Overview & status of two present TMDL projects

Previously Completed Indicator Bacteria TMDLs for Watersheds Upstream of Lake Houston

Adopted by TCEQ: Apr. 6, 2011; Approved by EPA: Jun. 29, 2011

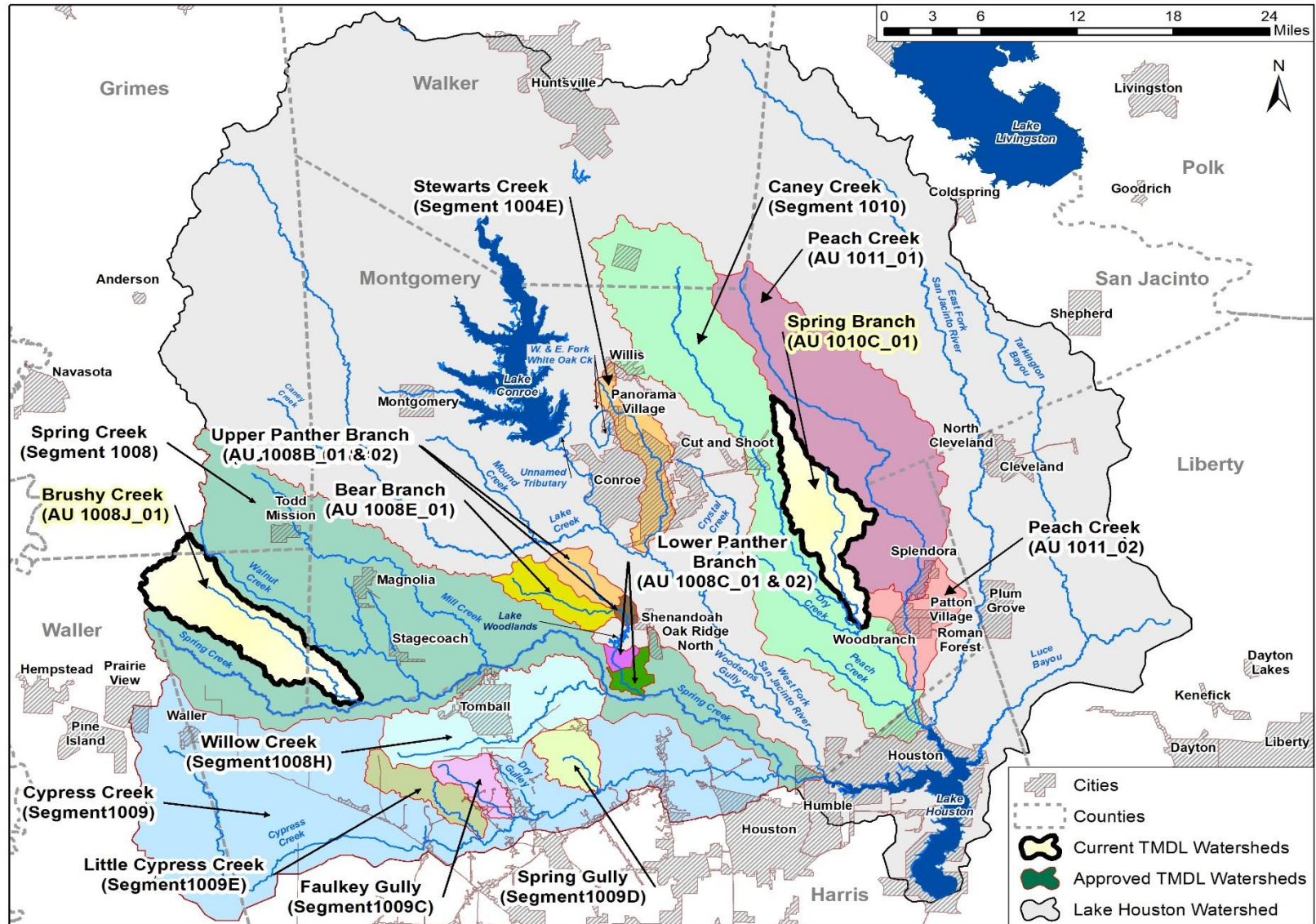
Segment Name	Segment Number	Assessment Unit (AU)
Stewarts Creek	1004E	1004E_02
Spring Creek	1008	1008_02, 1008_03, 1008_04
Willow Creek	1008H	1008H_01
Cypress Creek	1009	1009_01, 1009_02, 1009_03, 1009_04
Faulkey gully	1009C	1009C_01
Spring Gully	1009D	1009D_01
Little Cypress Creek	1009E	1009E_01
Caney Creek	1010	1010_02, 1010_04
Peach Creek	1011	1011_02

Previously Completed Addendum to Fifteen TMDLs Upstream of Lake Houston

Added by Addendum October 2013 by TCEQ; Approved by EPA:
Feb. 14, 2014

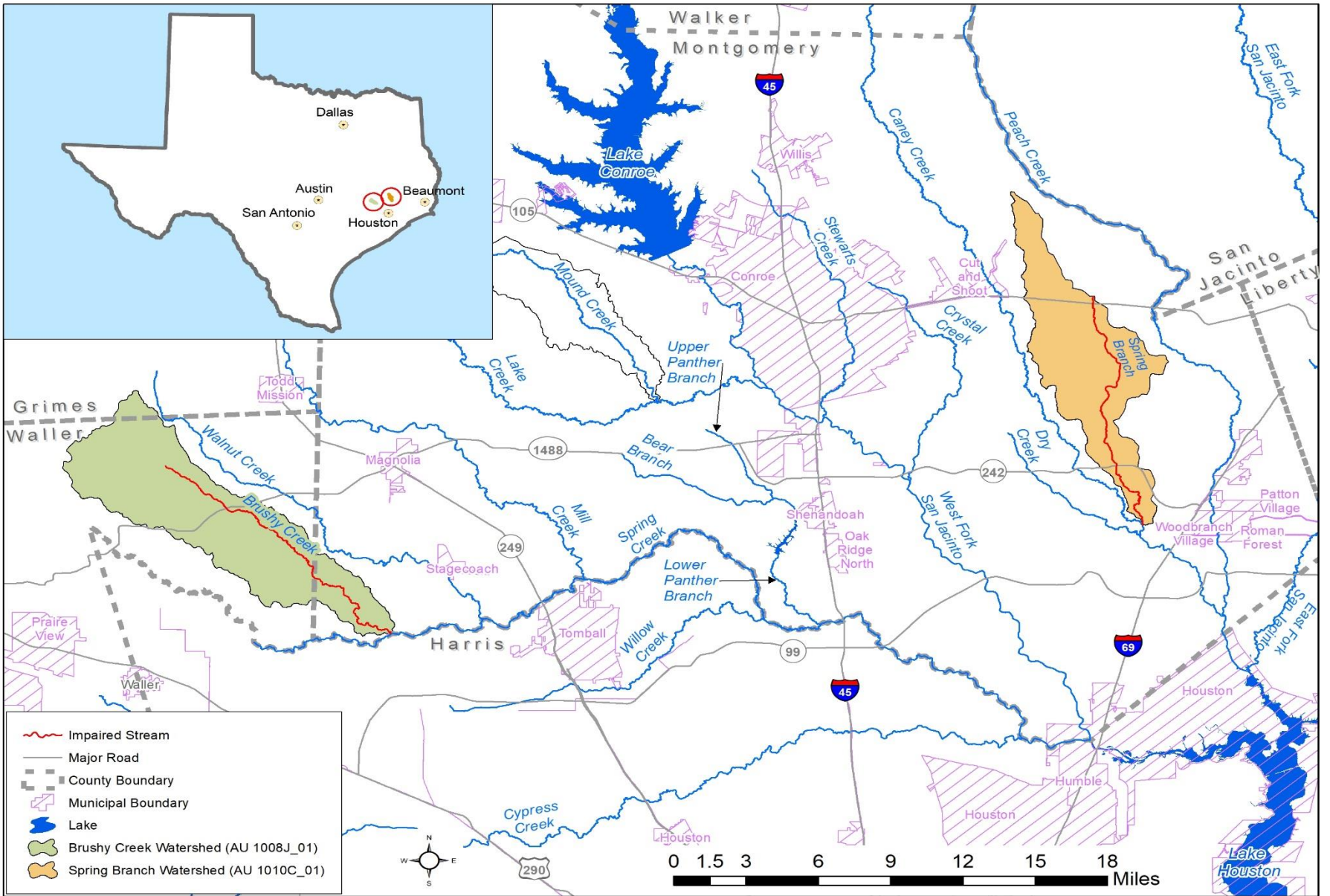
Segment Name	Segment Number	Assessment Unit (AU)
Upper Panther Branch	1008B	1008B_01, 1008B_02
Lower Panther Branch	1008C	1008C_01, 1008C_02
Bear Branch	1008E	1008E_01
Peach Creek	1011	1011_01

Lake Houston Upstream Watersheds showing areas of fifteen completed TMDLs



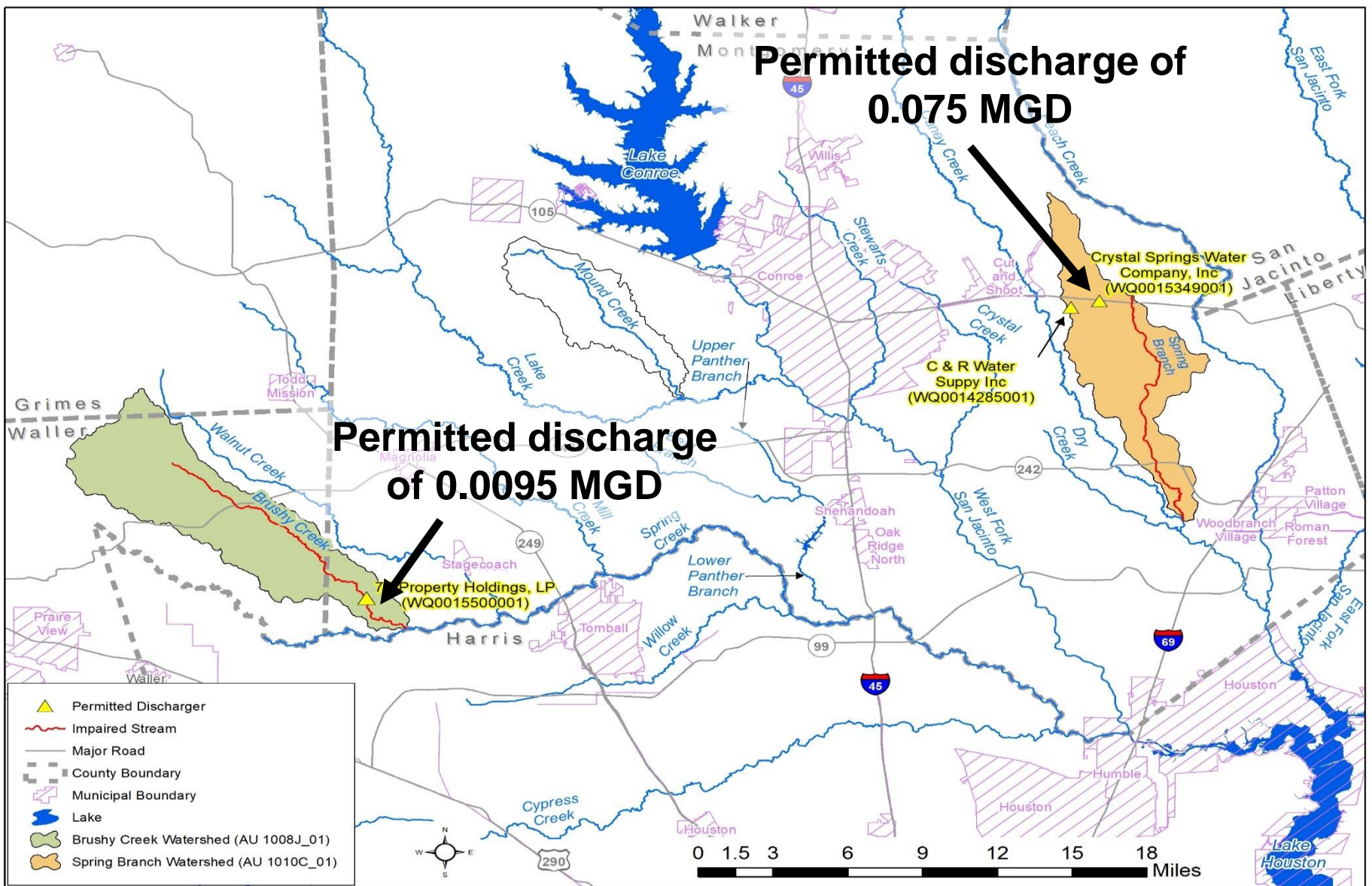
Addendum to *Fifteen TMDLs for Indicator Bacteria in Watersheds Upstream of Lake Houston*

- Project water bodies
 - Brushy Creek (1008J_01)
 - Spring Branch (1010C_01)
- Approach for TMDL – FDCs/LDCs



Summary Integrated Report Findings for *E. coli* Assessment (criterion = 126 MPN/100 mL)

Integrated Report Year	Waterbody	AU	No. of Samples	Data Date Range	Geometric Mean (MPN/100 mL)
2016 (draft)	Brushy Creek	1008J_01	22	2007-2014	221
2016 (draft)	Spring Branch	1010C_01	20	2007-2014	384

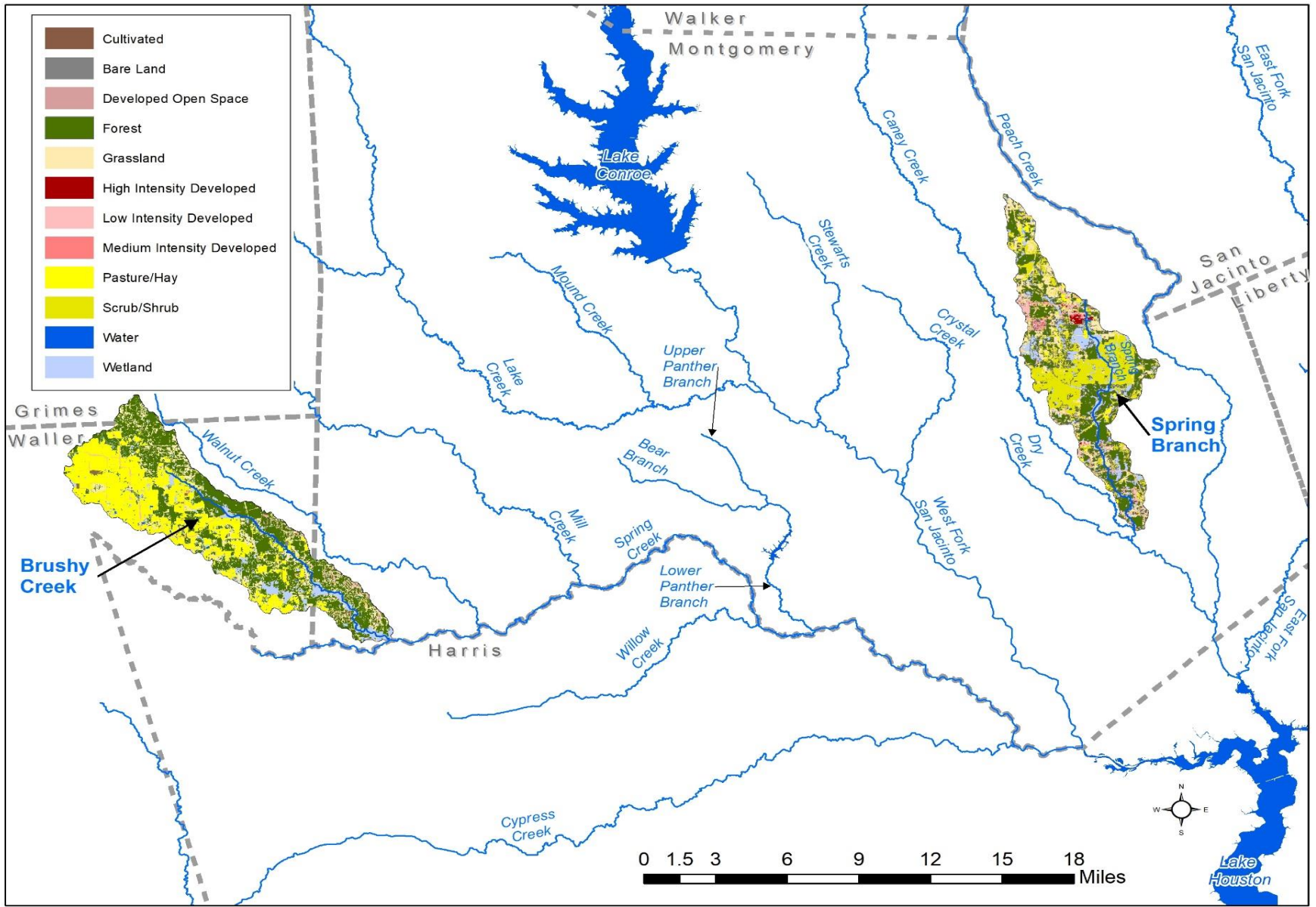


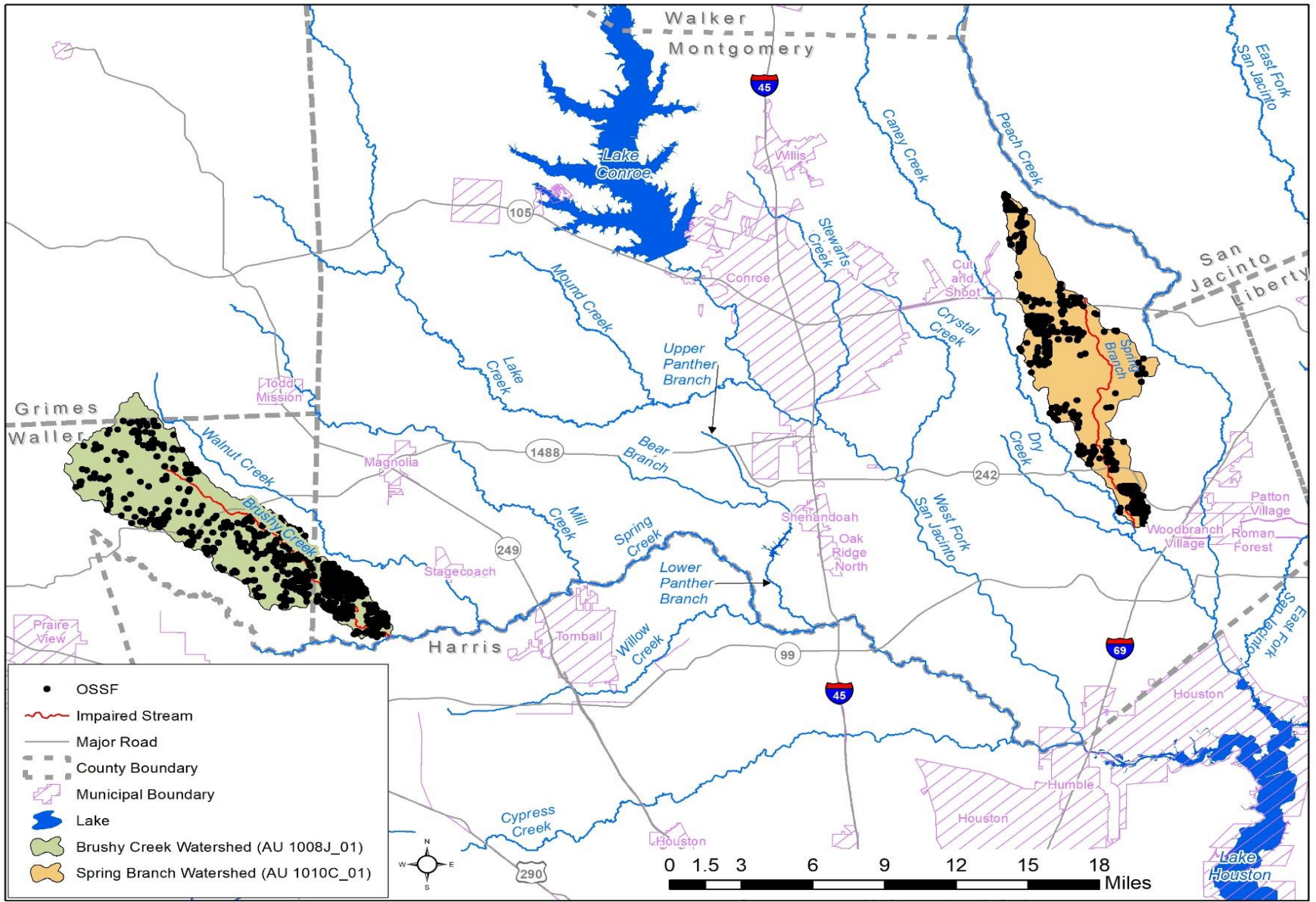
Estimated Area under Stormwater Permit Regulations within the Brushy Creek Watershed

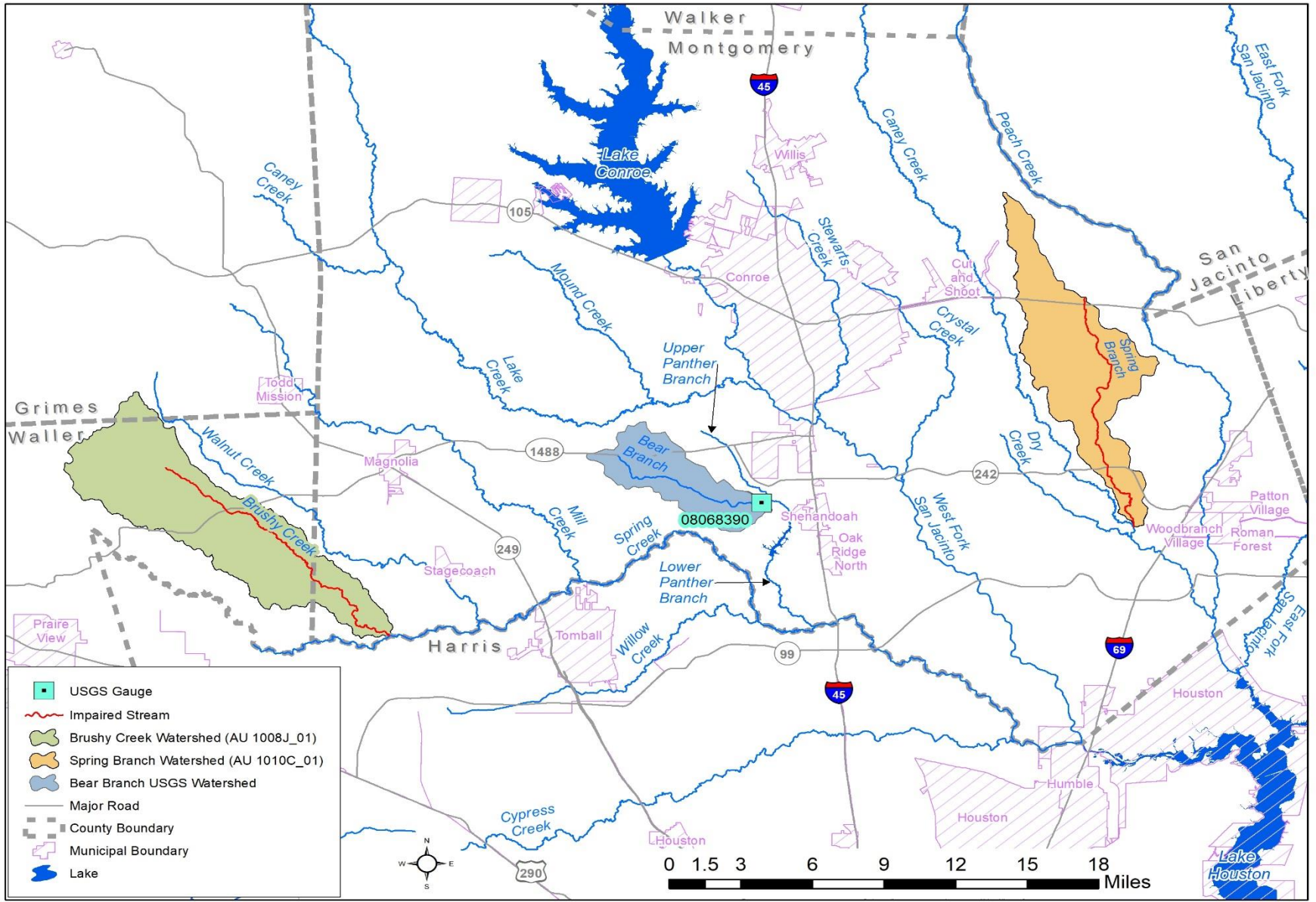
AU Area within 2010 Urbanized Areas (acres)	AU watershed area (acres)	Percentage of drainage area under stormwater regulation (%)
1,332	31,508	4.23

Estimated Area under Stormwater Permit Regulations within the Spring Branch Watershed

AU Area within 2010 Urbanized Areas (acres)	AU Area under construction and industrial stormwater permits (acres)	AU watershed area (acres)	Percentage of drainage area under stormwater regulation (%)
0	411	22,969	1.79







Status of TMDL Development

- Technical Support Document (TSD) to be completed by the end of Aug. 2019
- TSD will be posted on TCEQ website (TCEQ will notify BIG when it is available for public review and comment)
- TCEQ will use TSD to develop an addendum to be included in Water Quality Management Plan update

Thank You

Any Questions?

Jimmy Millican
email: jmillican@tarleton.edu