



# Texas Target Communities Program

Jeewasmi Thapa, AICP  
Program Coordinator  
[jthapa@arch.tamu.edu](mailto:jthapa@arch.tamu.edu)  
979.458.3121

[www.ttc.arch.tamu.edu](http://www.ttc.arch.tamu.edu)



## Texas Target Communities

- High-impact service learning and community outreach program at TAMU
- Partners with small communities to assist with needs that would otherwise go unmet



# Texas Target Communities Program

- Since 1980
- Historically worked with:
  - Small Texas cities that could not afford consultants
  - For one year to fifteen months
- Typical projects:
  - planning students to develop comprehensive plans
  - studio classes to develop site plans

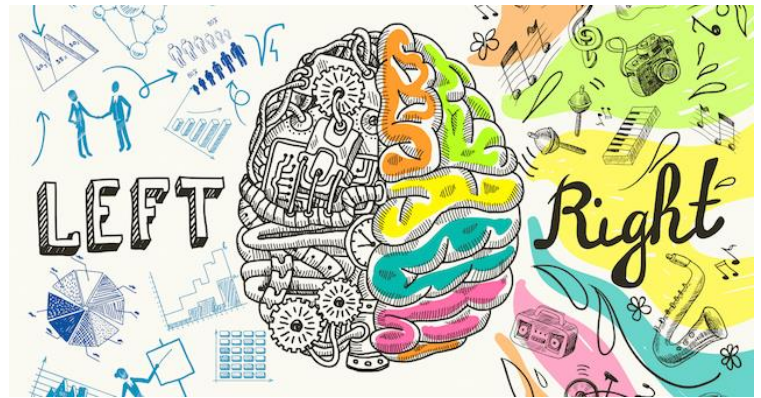


- Over 50 communities
- Students awards under the supervision of faculty
  - Temple, 1988
  - Madisonville, 1989
  - Palacios, 2003
  - Navasota, 2004
  - Hearne, 2005
  - Texas Urban Triangle, 2008
  - Beaumont, 2009
  - Cuero, 2009
  - Sealy, 2010
  - Gonzales, 2013
  - La Grange, 2015
  - Sunnyside Neighborhood, 2017
  - Grimes County, 2017
  - Liberty County, 2017 \*professional award\*
  - SETPRC, 2018



# Inclusive Plan Making Process

- Balancing *left* brain and *right* brain
- Solid factual understanding of the forces and trends shaping the community
- Visioning with local wisdom, judgment, inspiration, and imagining the future



What do community members want to preserve, add, remove, or keep out?



# El Campo Downtown Revitalization Plan



Enhance Streetscape



Promote  
Infill

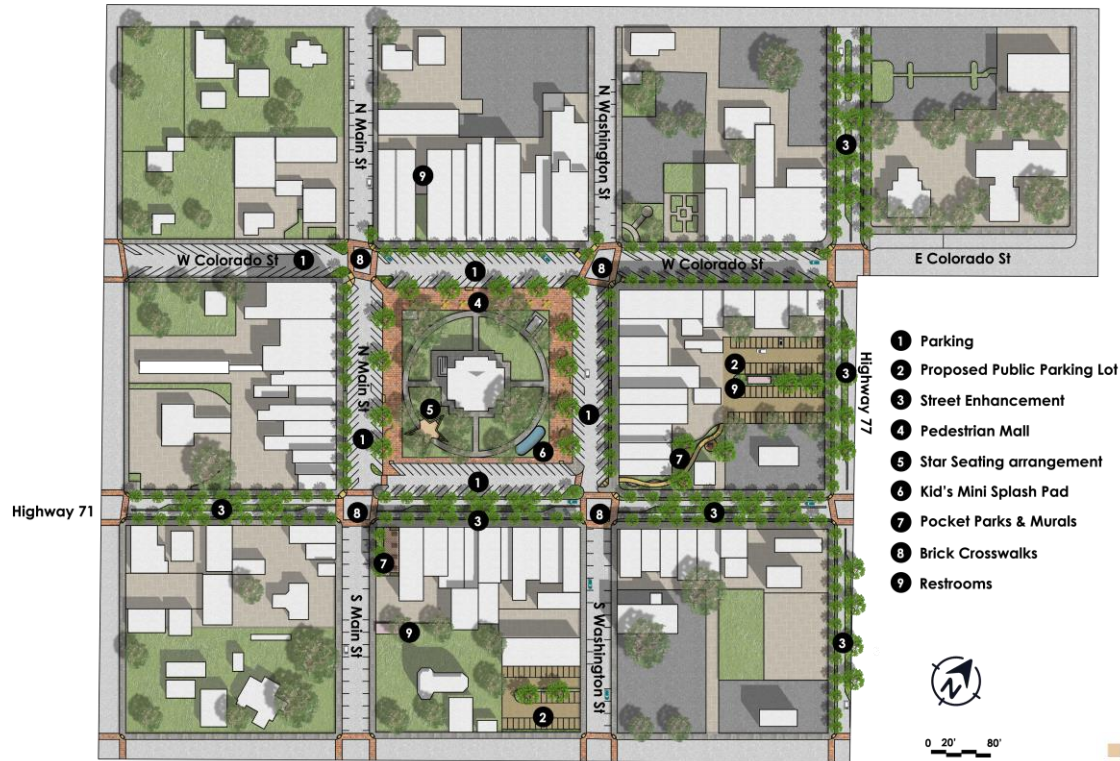


Increase  
Housing

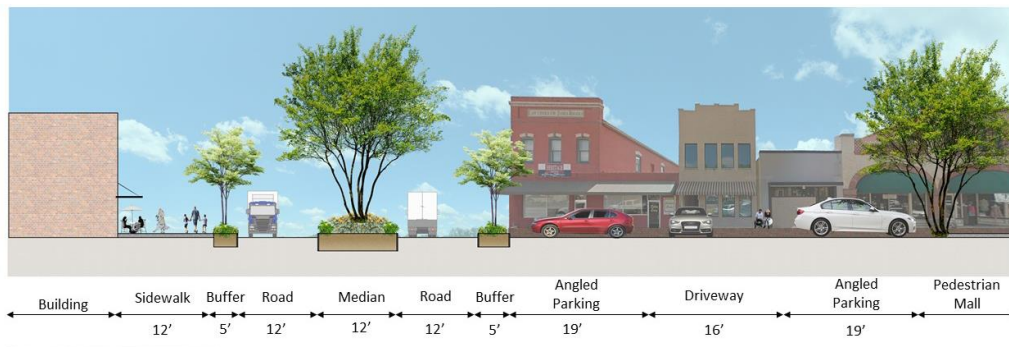


Activate  
Alleys

# La Grange Comprehensive Plan



- Capitalizing on assets
- Promote an active and lively downtown for residents
- Beautify the downtown
- Economic Development
- Create programs to develop and support a skilled and competitive workforce





# Rockport Plan

Students explored  
Downtown Revitalization,  
Green Infrastructure and  
Low Impact Development  
strategies





# Impacts: Nolanville Comprehensive Plan

- A community member on the task force, so impassioned by the effort, applied for and is currently Nolanville's city manager
- Secured **close to \$2 million in grants** to implement the students' recommendations (prior to this the city hadn't applied for any grants)
- Broke ground on **the redesign of the park and new community center**
- Implemented a recycling program through the **Keep Nolanville Beautiful** program
- Hosts regular **annual events**, including the 5k Fox Trot, the Train hop Jamboree, Keep Nolanville Beautiful Clean Up days, and more.
- Just about everybody in town has **updated buildings on Main Street** with new businesses
- Residents are taking **pride** in their neighborhood
- The train that blocks the community is being elevated to the state agencies

# Contact information

Jeewasmi Thapa, AICP

Program Coordinator

[jthapa@arch.tamu.edu](mailto:jthapa@arch.tamu.edu)

979.458.3121

[www.ttc.arch.tamu.edu](http://www.ttc.arch.tamu.edu)

