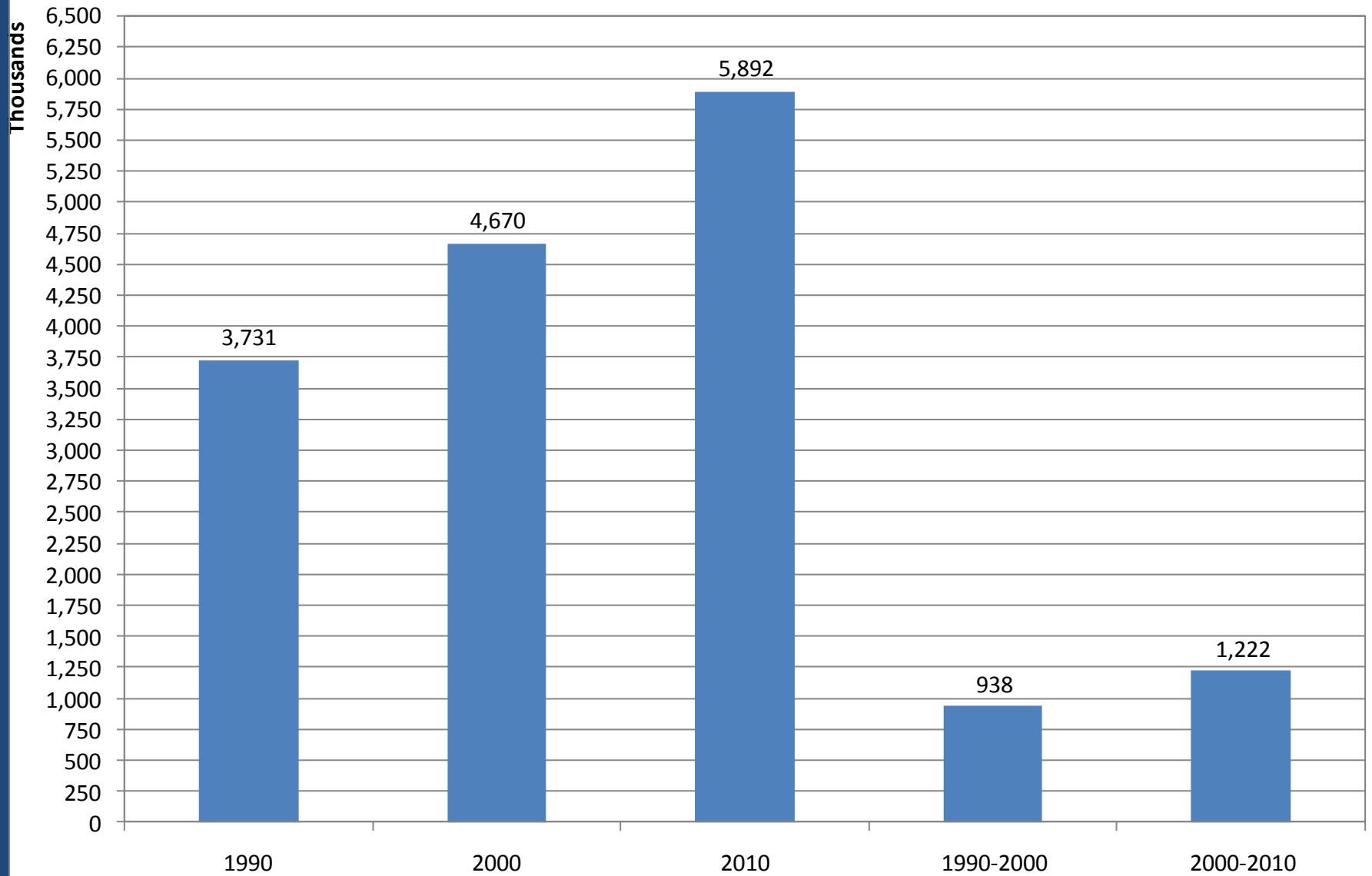
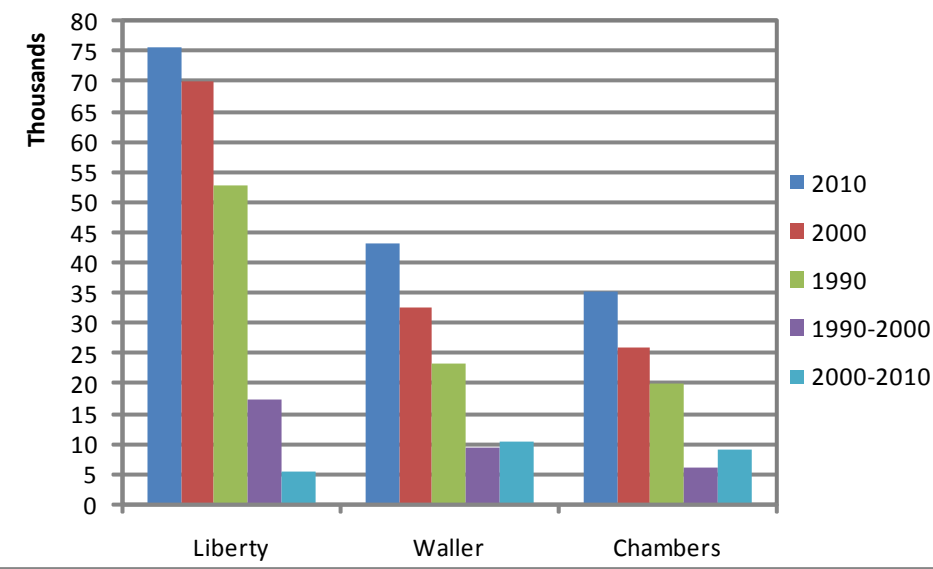
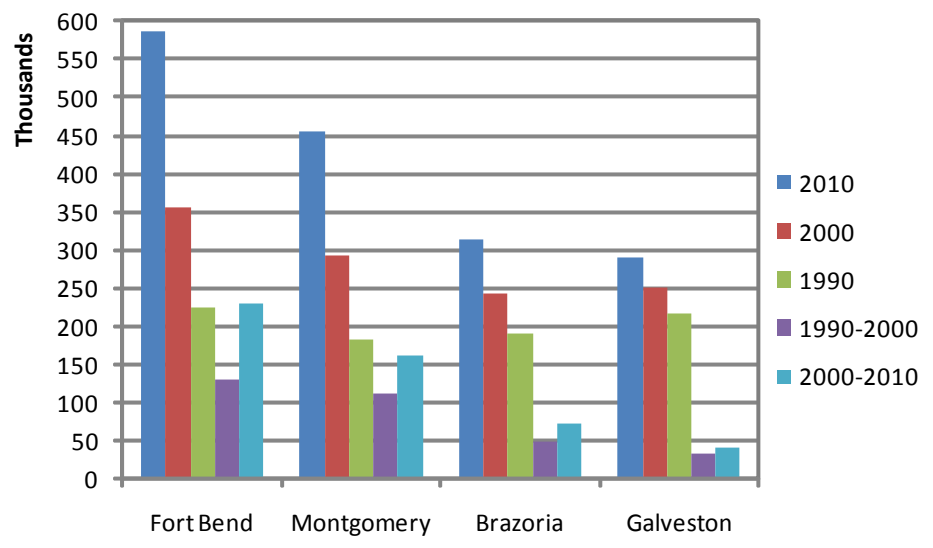
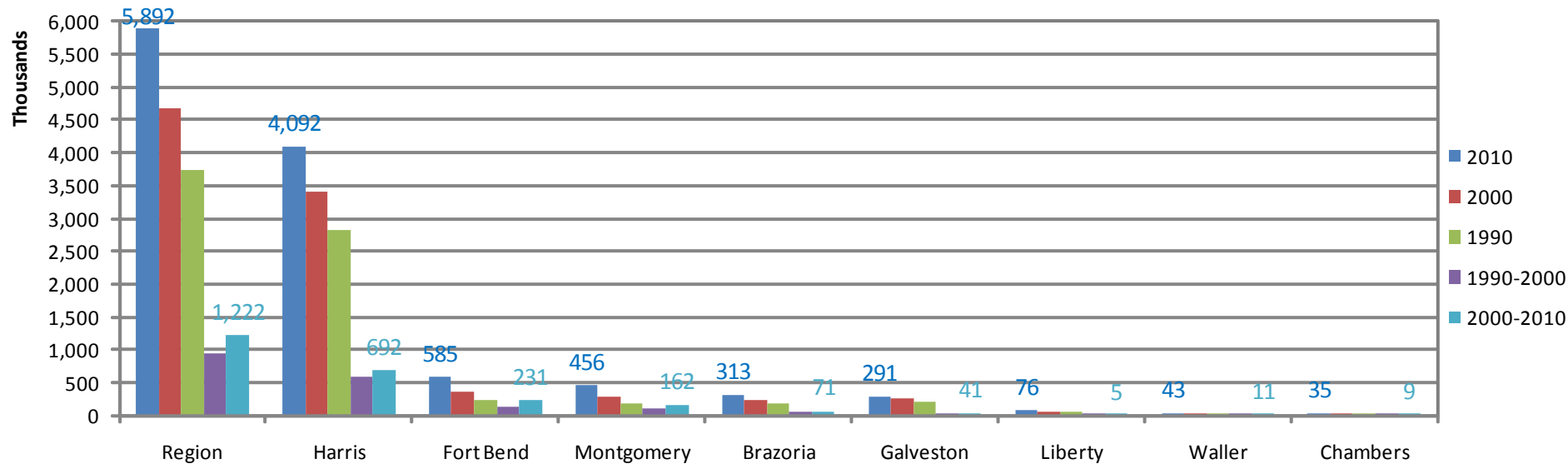


2010 Census

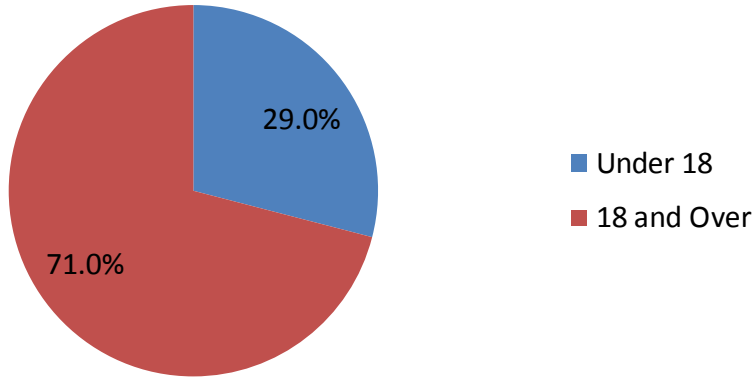
- 2010 Census Data Release Schedule
 - February 2011: Redistricting Data
 - Summer 2011: Detailed Demographic Data
 - October 2012: Urbanized Area Boundaries
- American Community Survey (ACS) replaced the “Long Form” (information on income, education, disability, etc.) – continuous data collection
- 2010 Census Redistricting Data Tables and GIS Files Available on the H-GAC website
- H-GAC staff ready to help with 2010 Census and ACS data

H-GAC 8-County Region: Total Population and Population Change

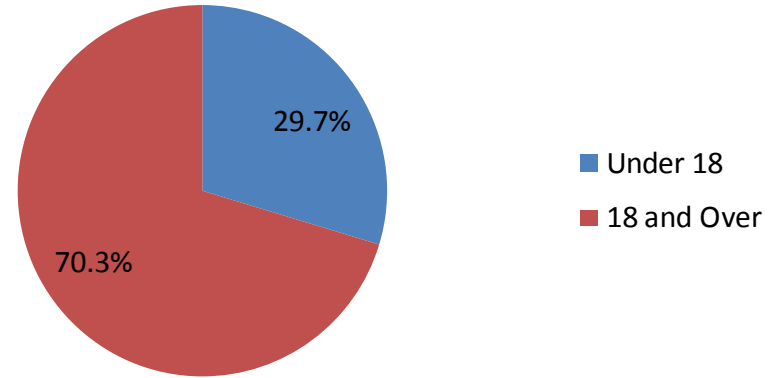




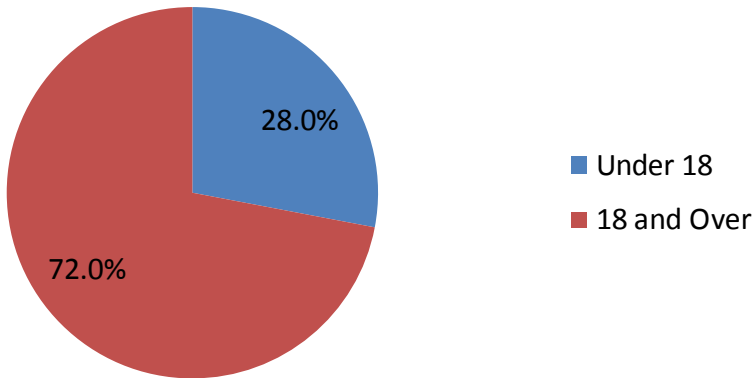
Population in 2000



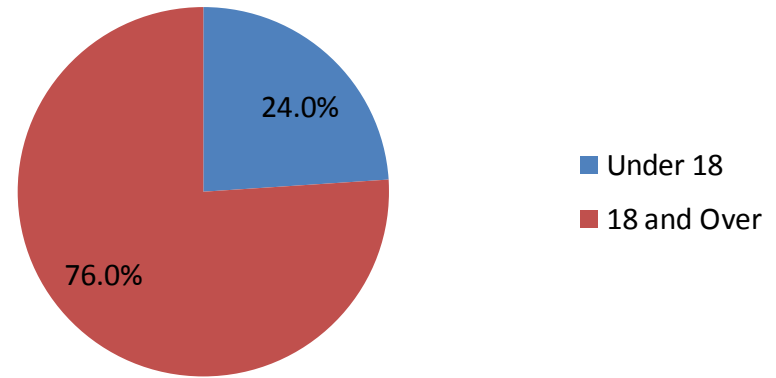
Population Growth, 1990-2000



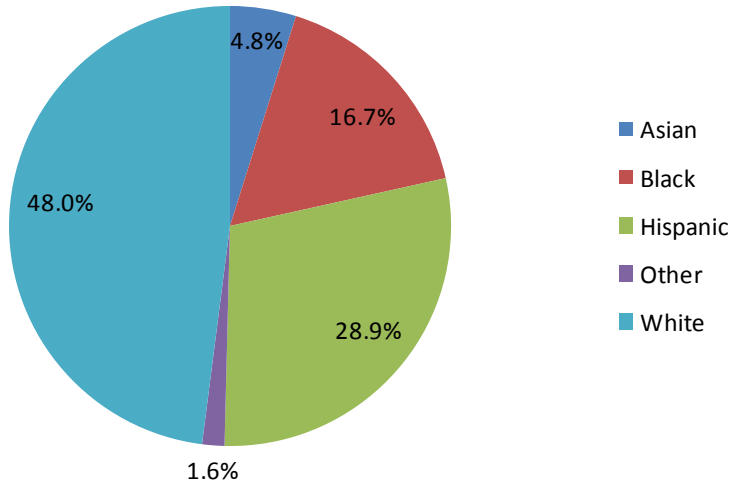
Population in 2010



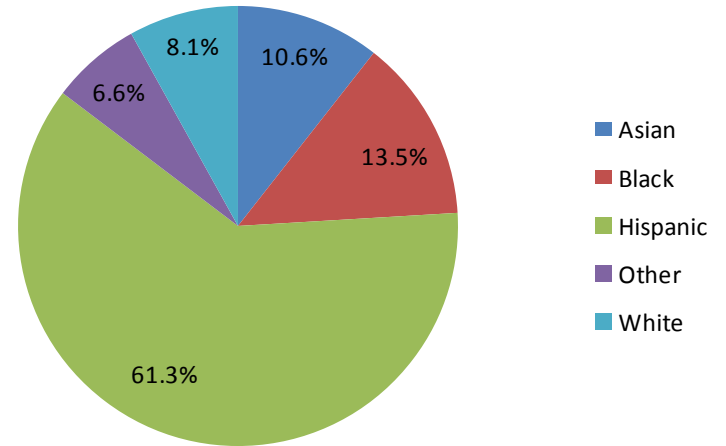
Population Growth, 2000-2010



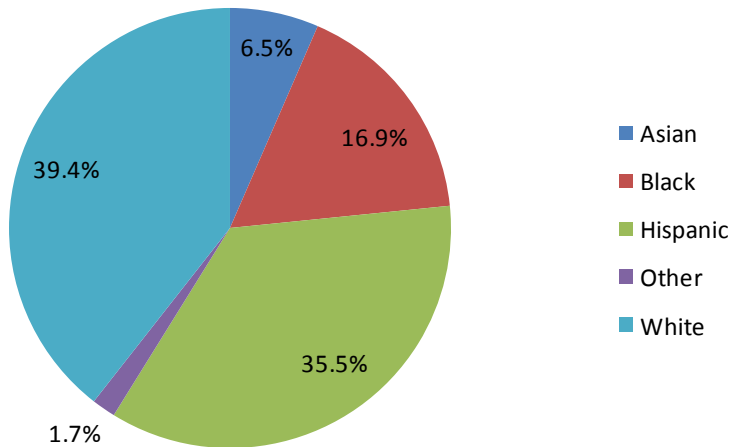
Population in 2000



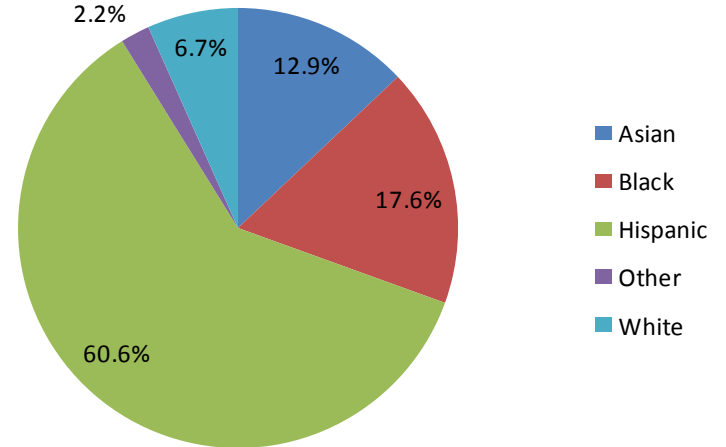
Population Growth, 1990-2000



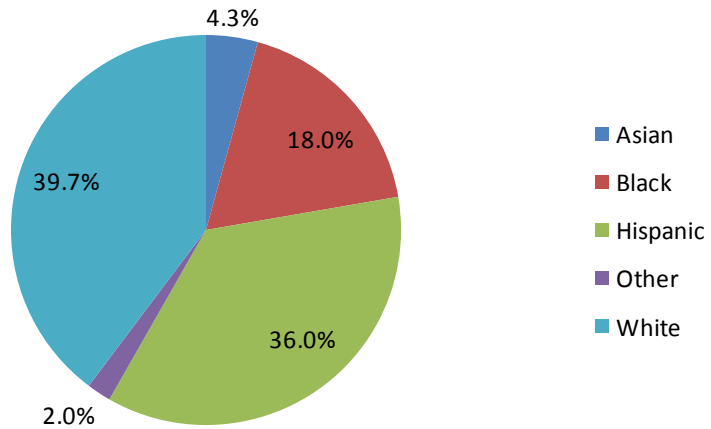
Population in 2010



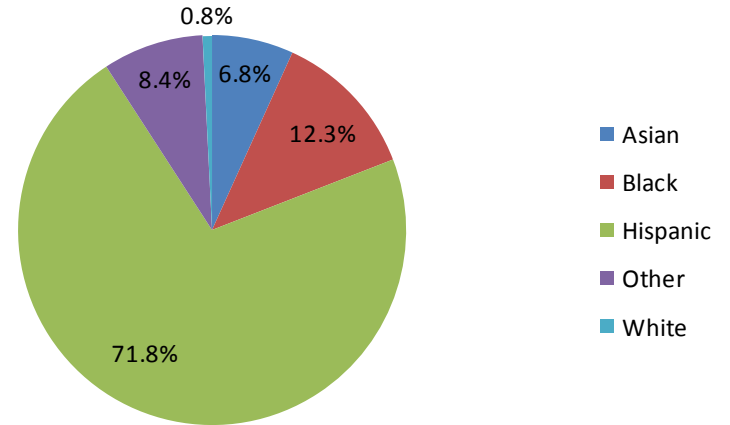
Population Growth, 2000-2010



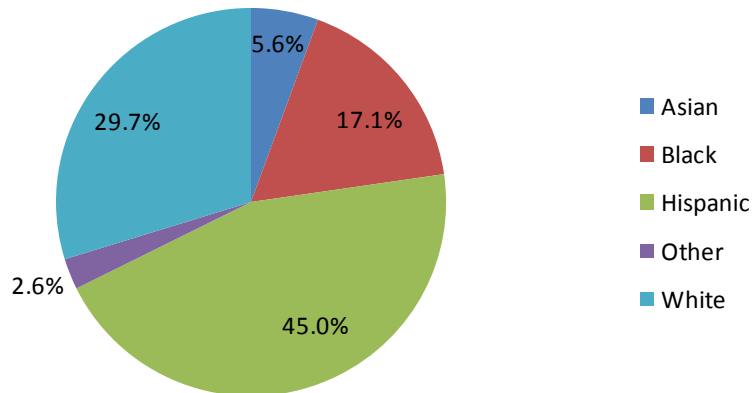
Population Under 18 in 2000



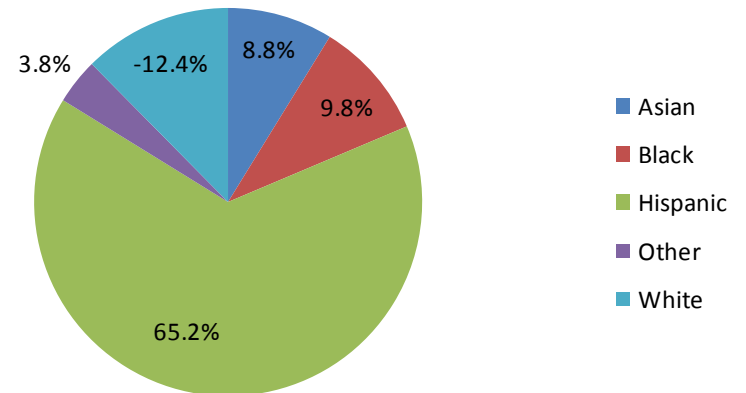
Change in Population Under 18, 1990-2000



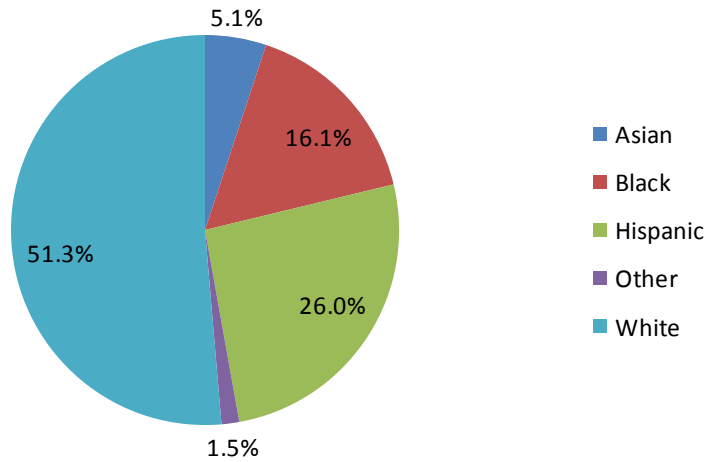
Population Under 18 in 2010



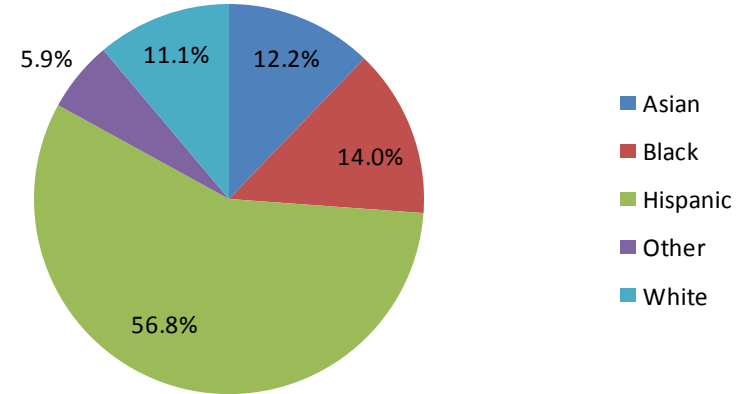
Change in Population Under 18, 2000-2010



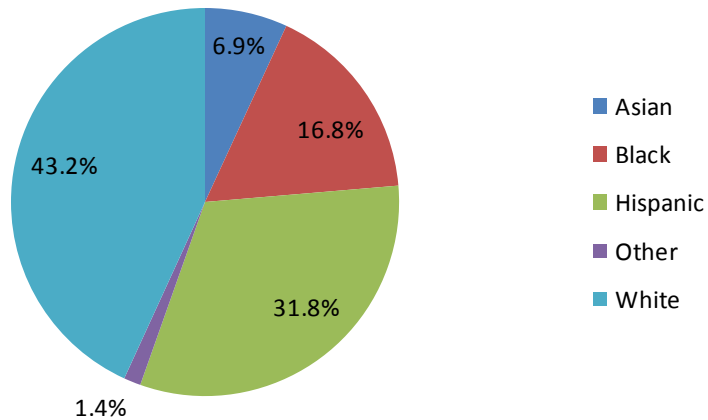
Population 18 and Over in 2000



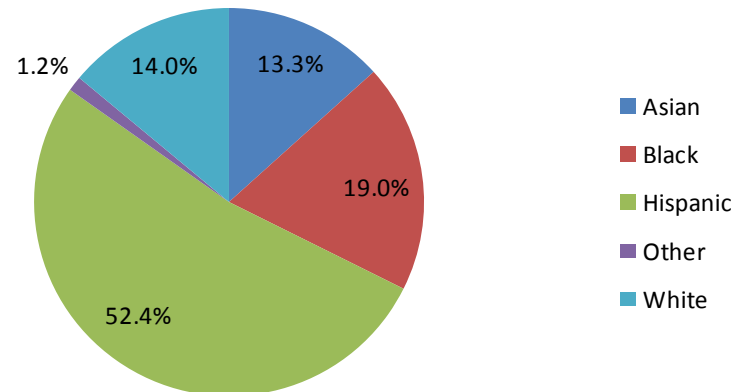
Change in Population 18 and Over, 1990-2000

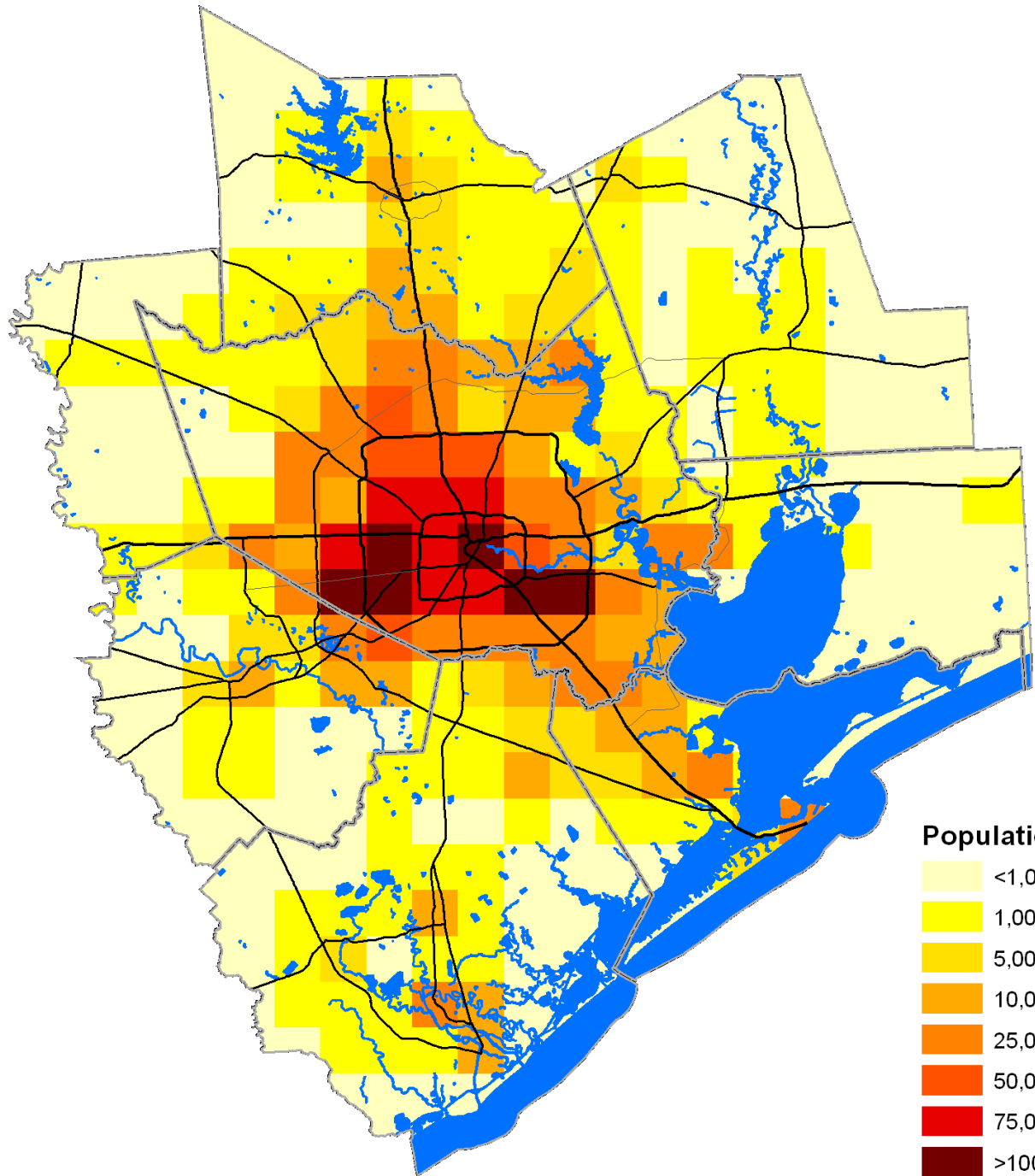


Population 18 and Over in 2010

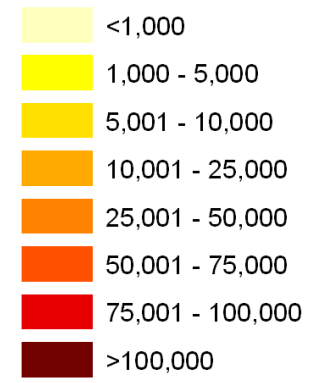


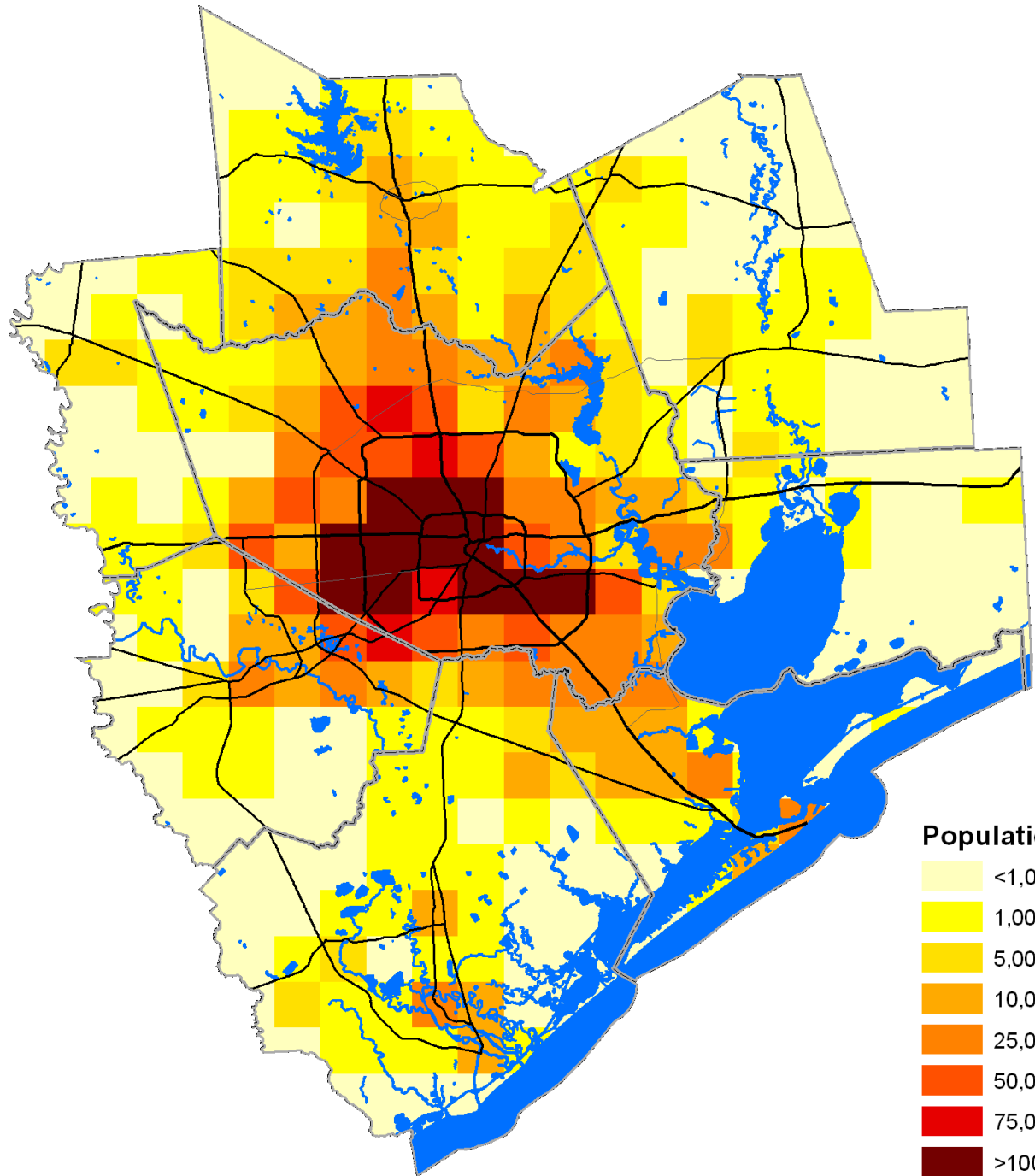
Change in Population 18 and Over, 2000-2010



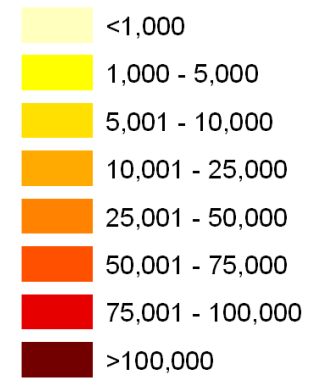


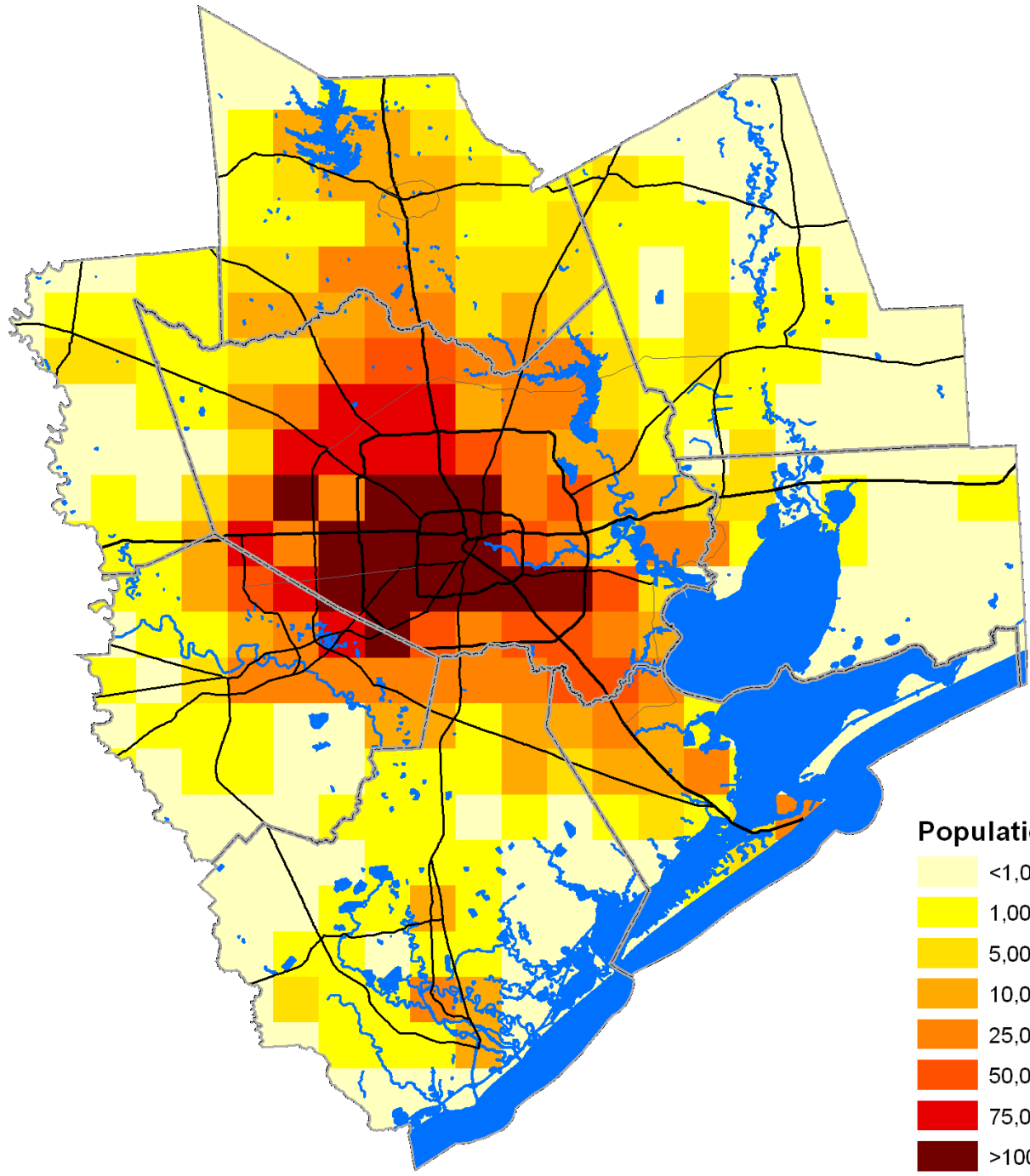
Population, 1990



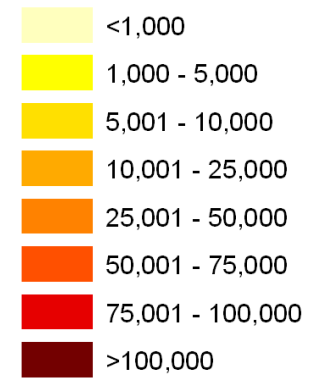


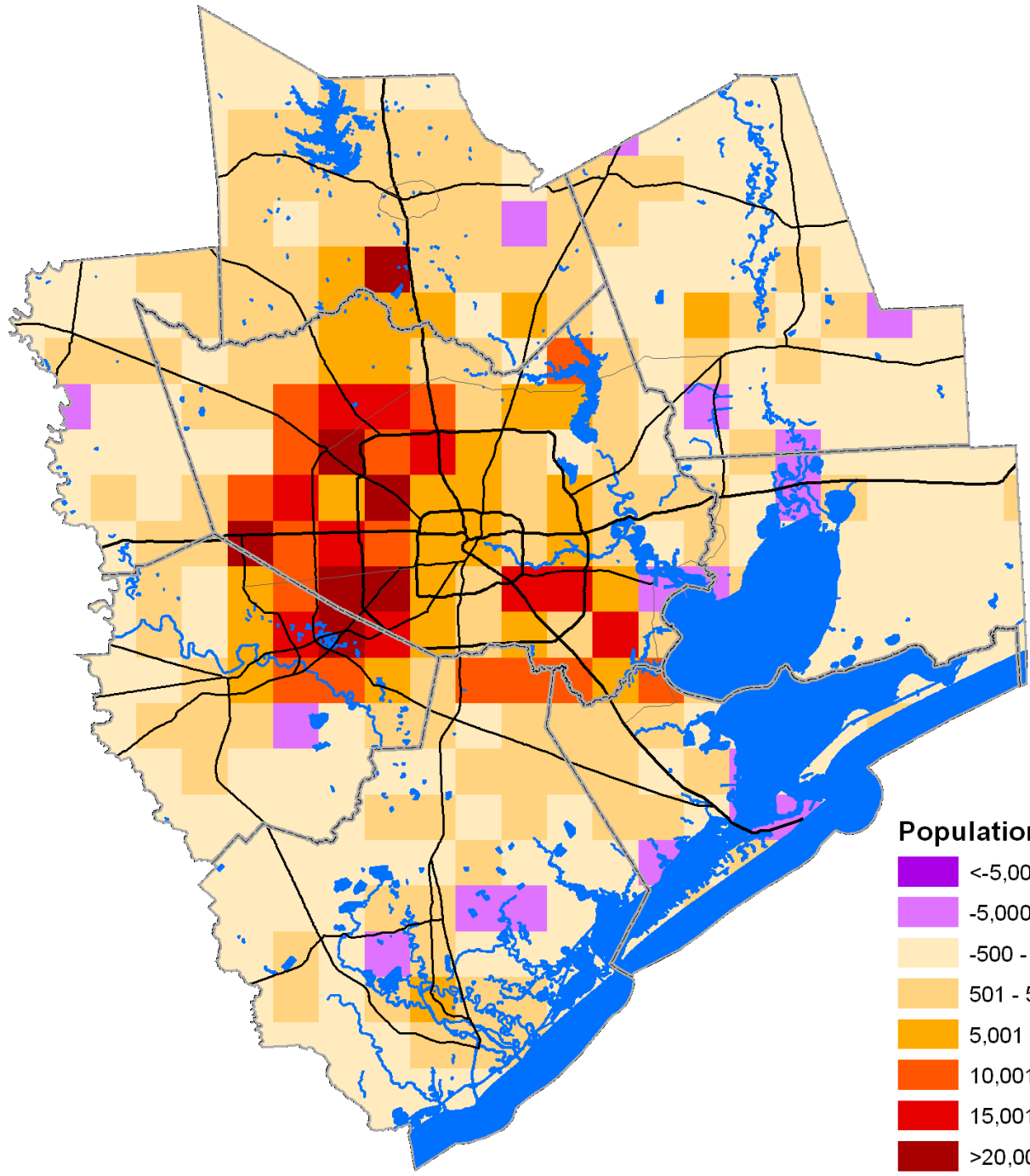
Population, 2000



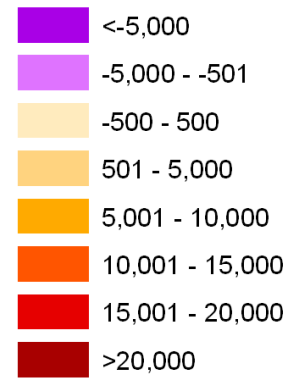


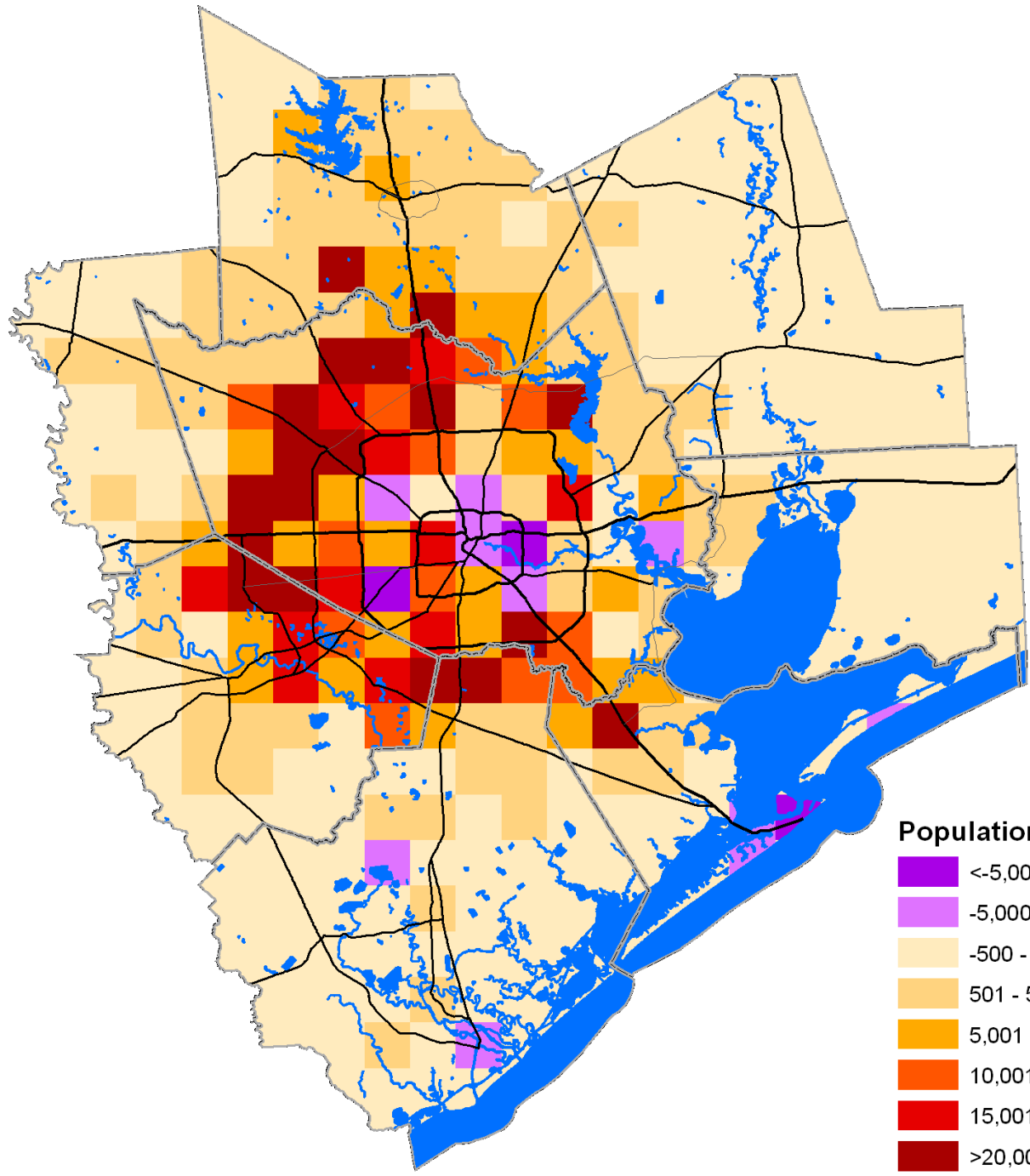
Population, 2010



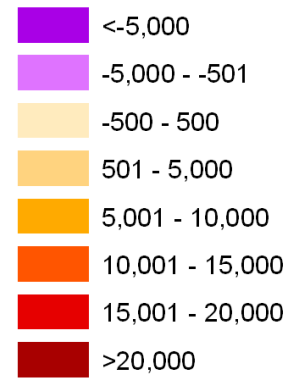


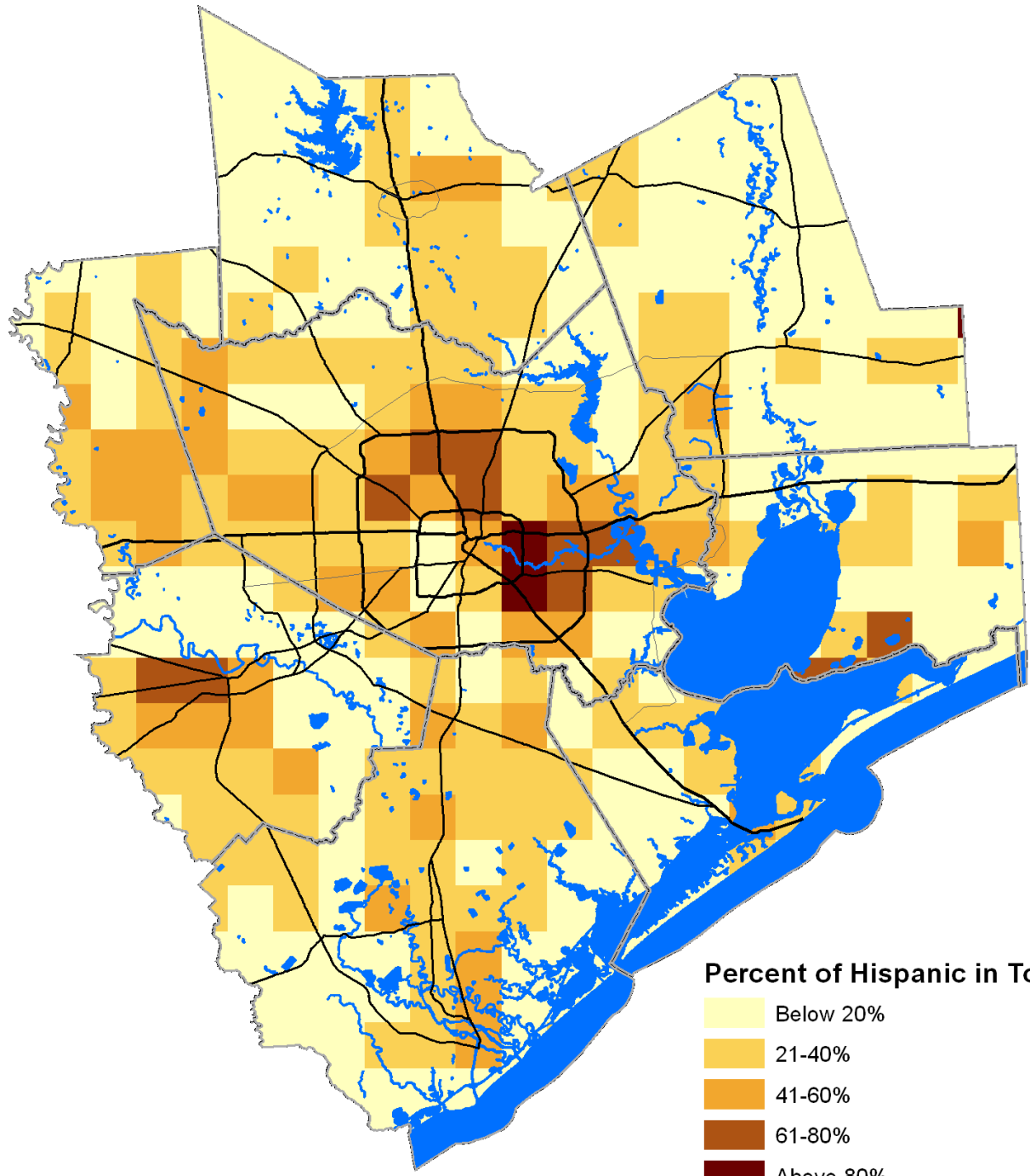
Population Growth, 1990-2000





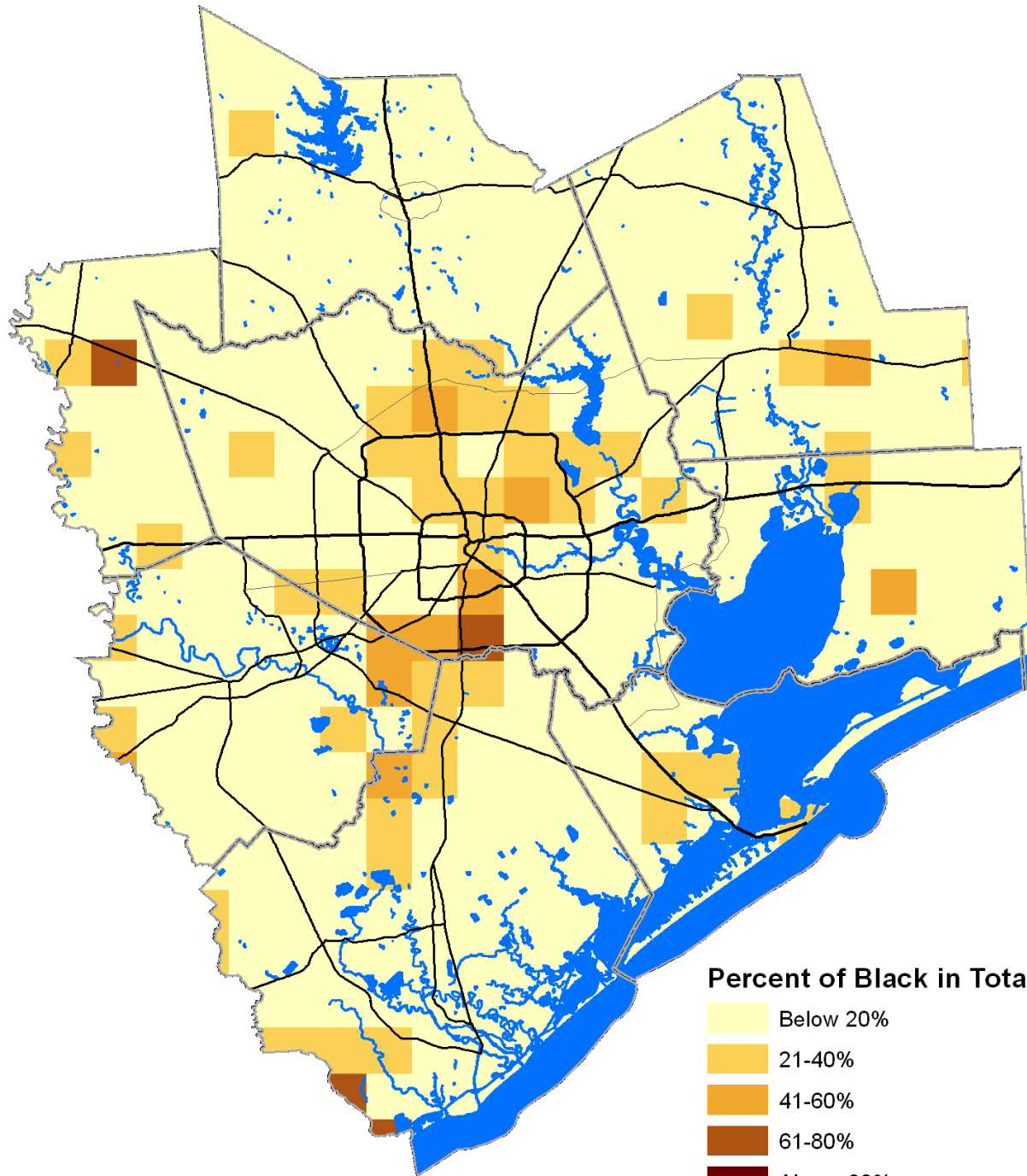
Population Growth, 2000-2010



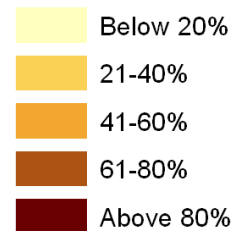


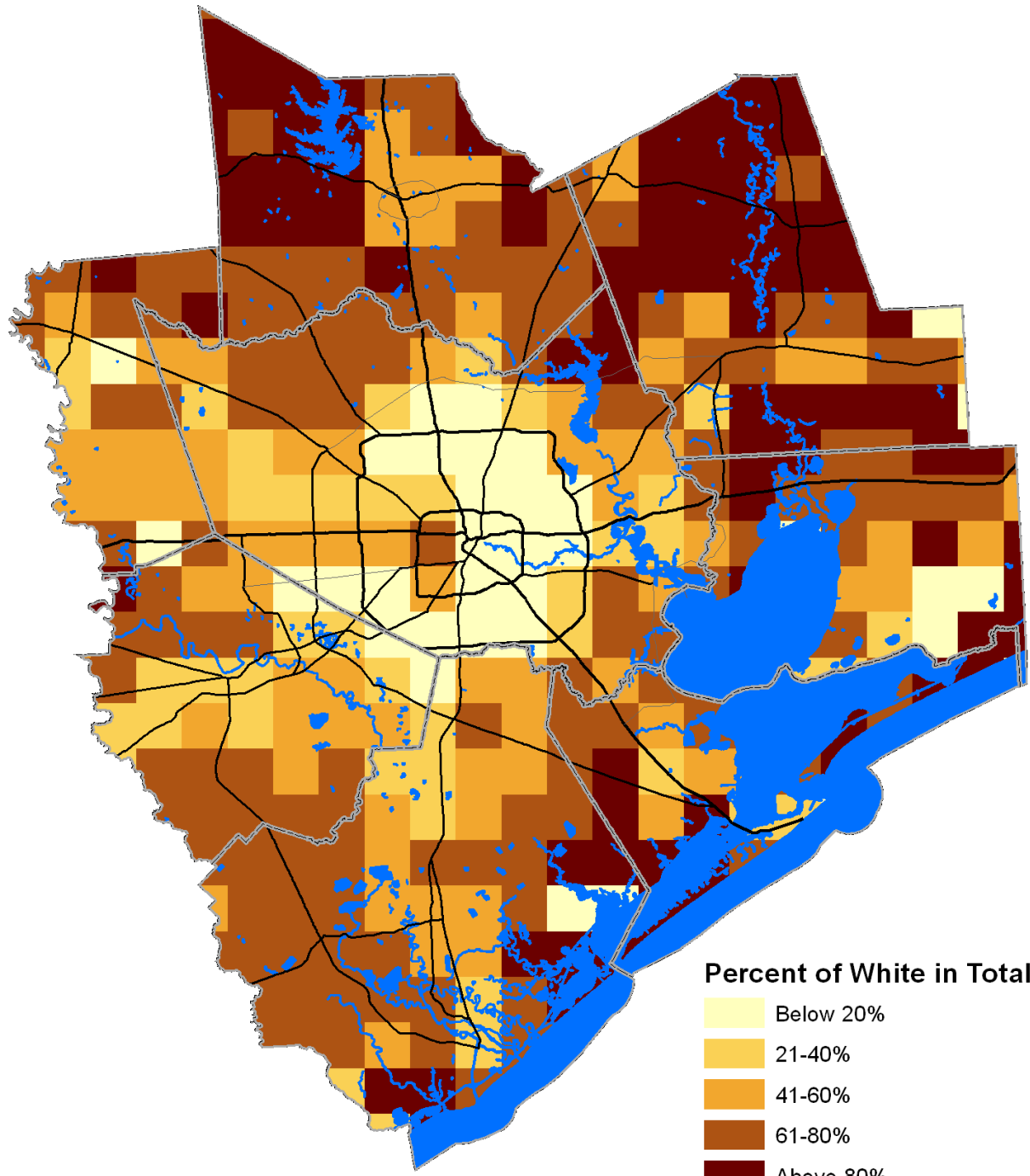
Percent of Hispanic in Total Population, 2010

- Below 20%
- 21-40%
- 41-60%
- 61-80%
- Above 80%



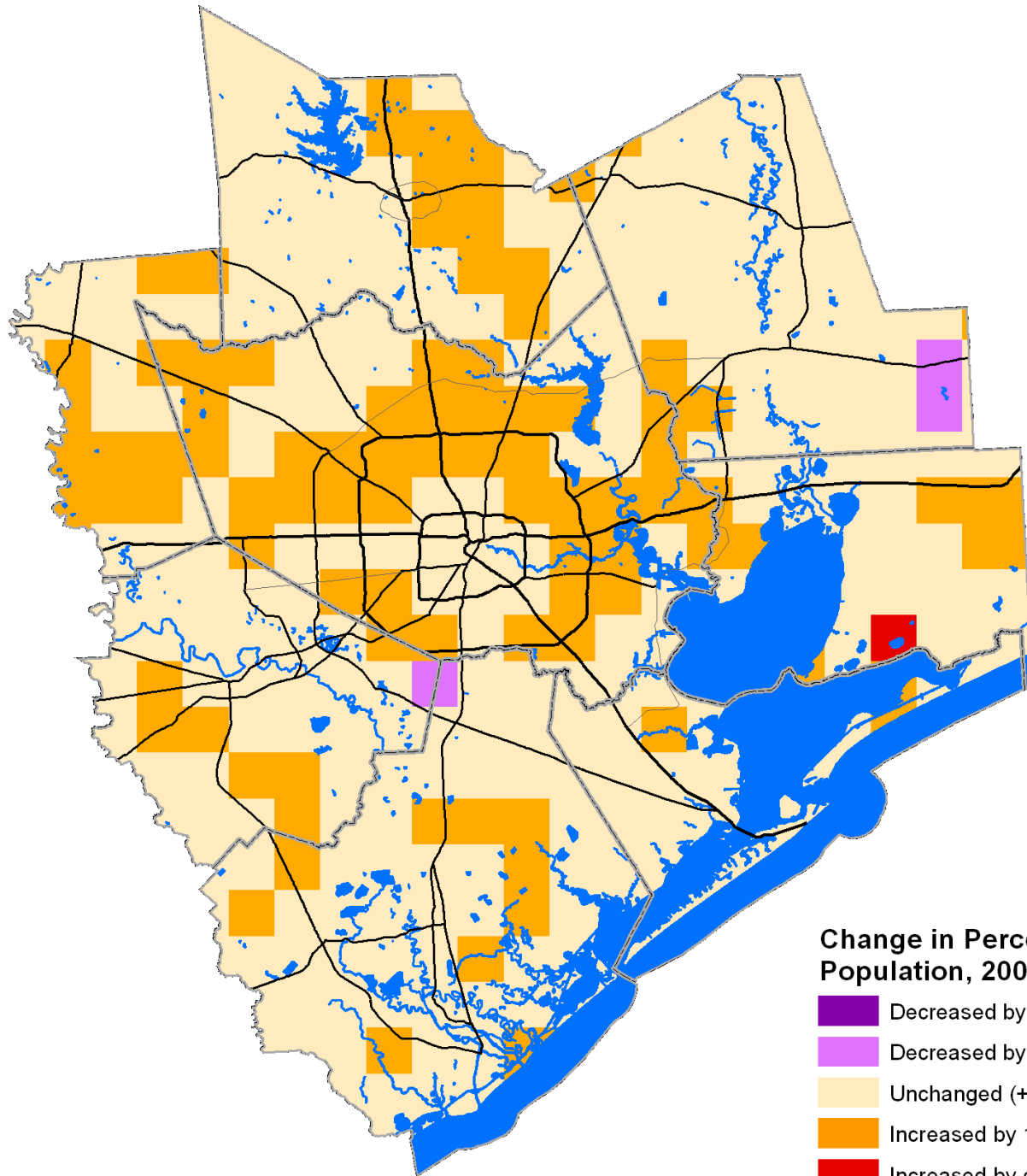
Percent of Black in Total Population, 2010





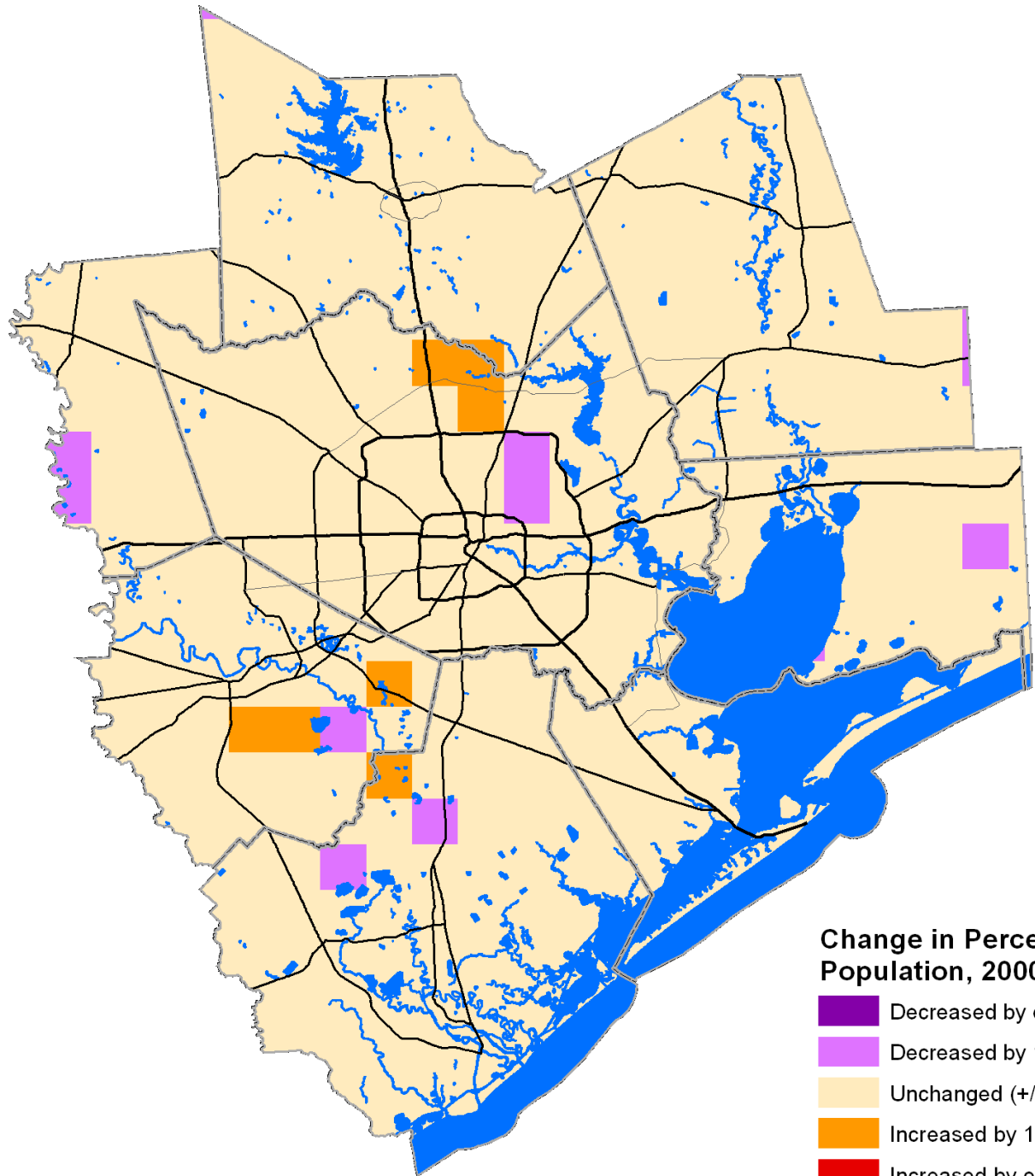
Percent of White in Total Population, 2010

- Below 20%
- 21-40%
- 41-60%
- 61-80%
- Above 80%



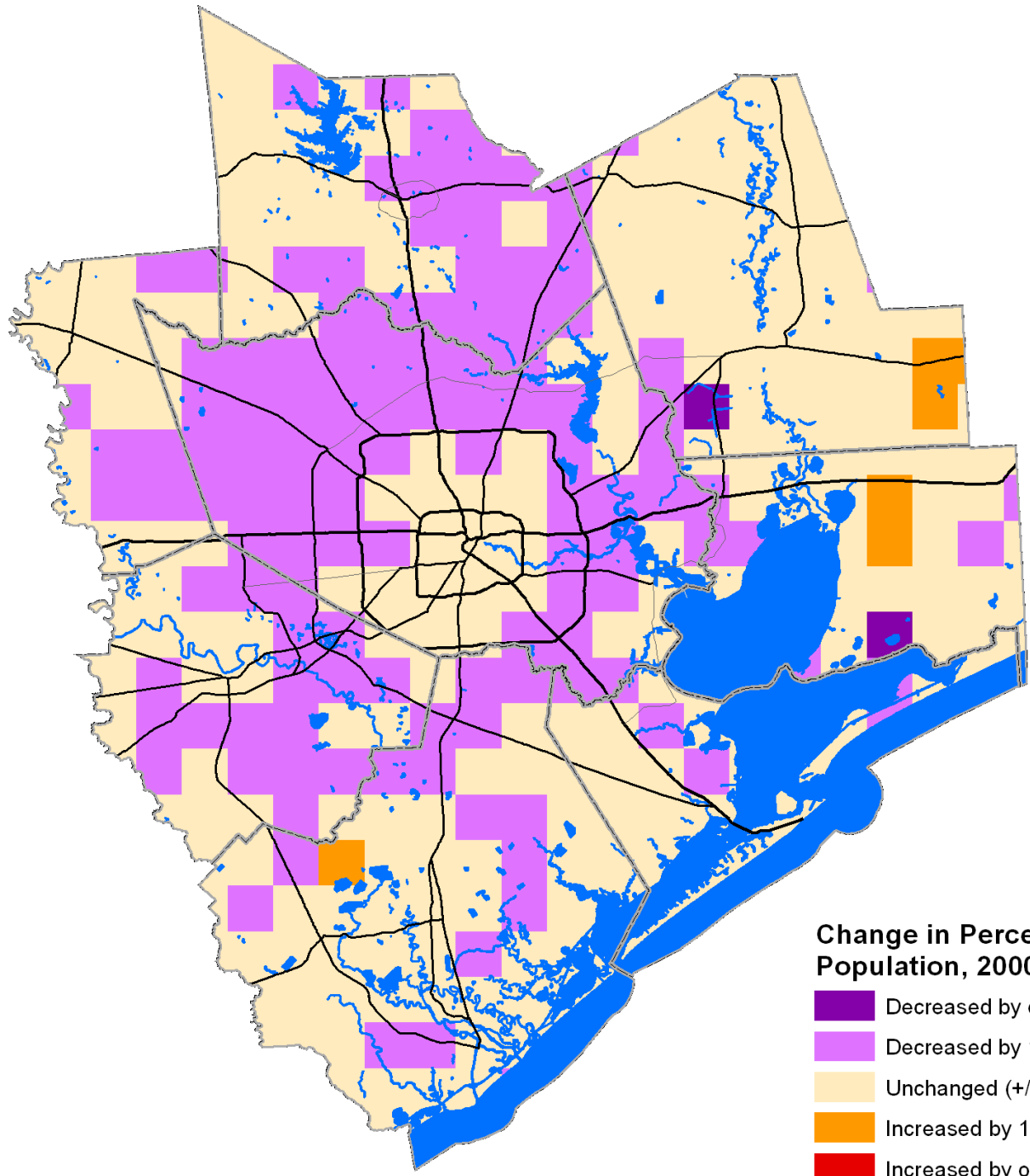
Change in Percent of Hispanic Population, 2000-2010

- Decreased by over 50 percentage points
- Decreased by 11 to 50 percentage points
- Unchanged (+/- 10 percentage points)
- Increased by 11 to 50 percentage points
- Increased by over 50 percentage points



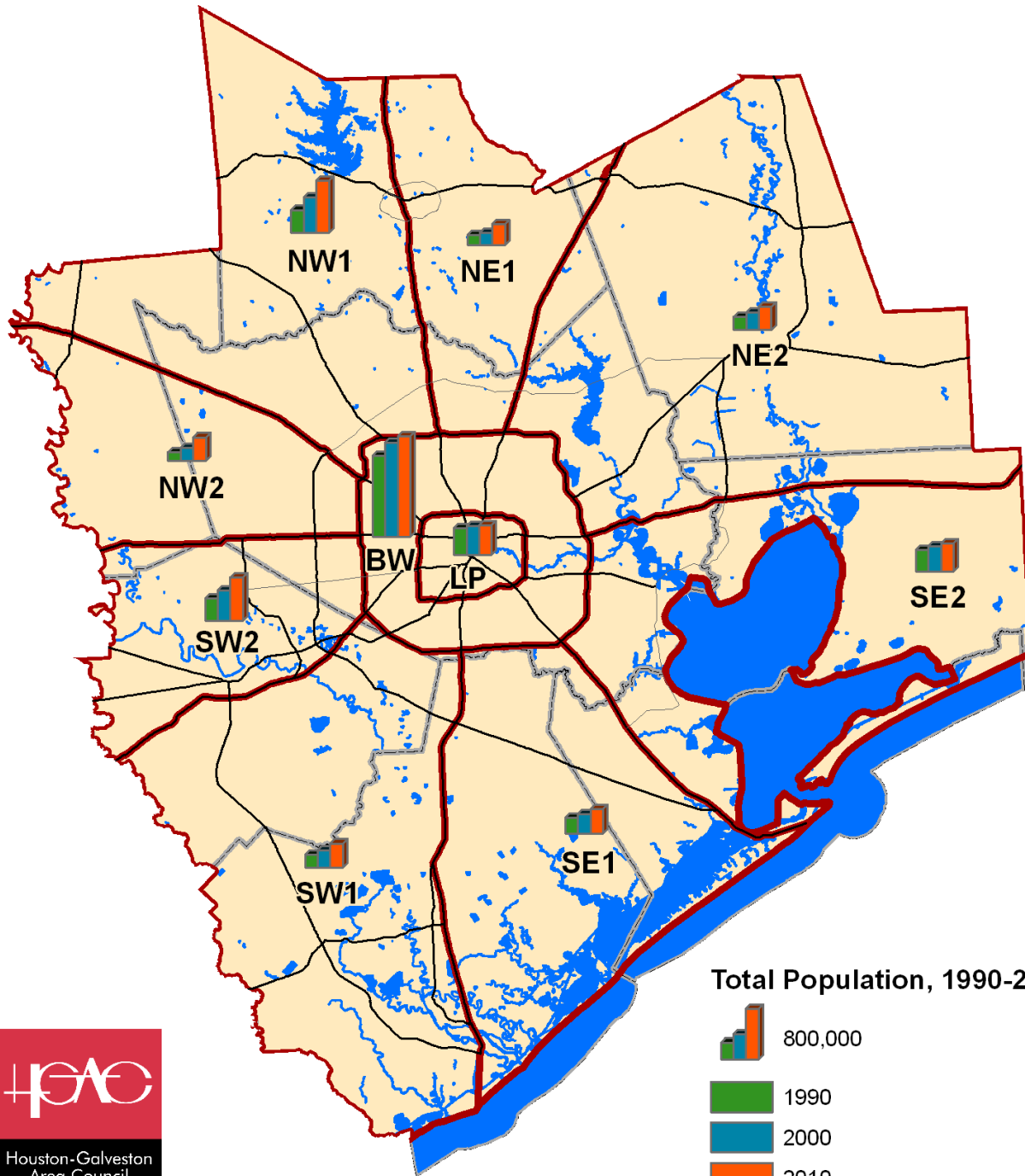
Change in Percent of Black Population, 2000-2010

- Decreased by over 50 percentage points
- Decreased by 11 to 50 percentage points
- Unchanged (+/- 10 percentage points)
- Increased by 11 to 50 percentage points
- Increased by over 50 percentage points



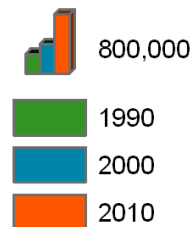
Change in Percent of White Population, 2000-2010

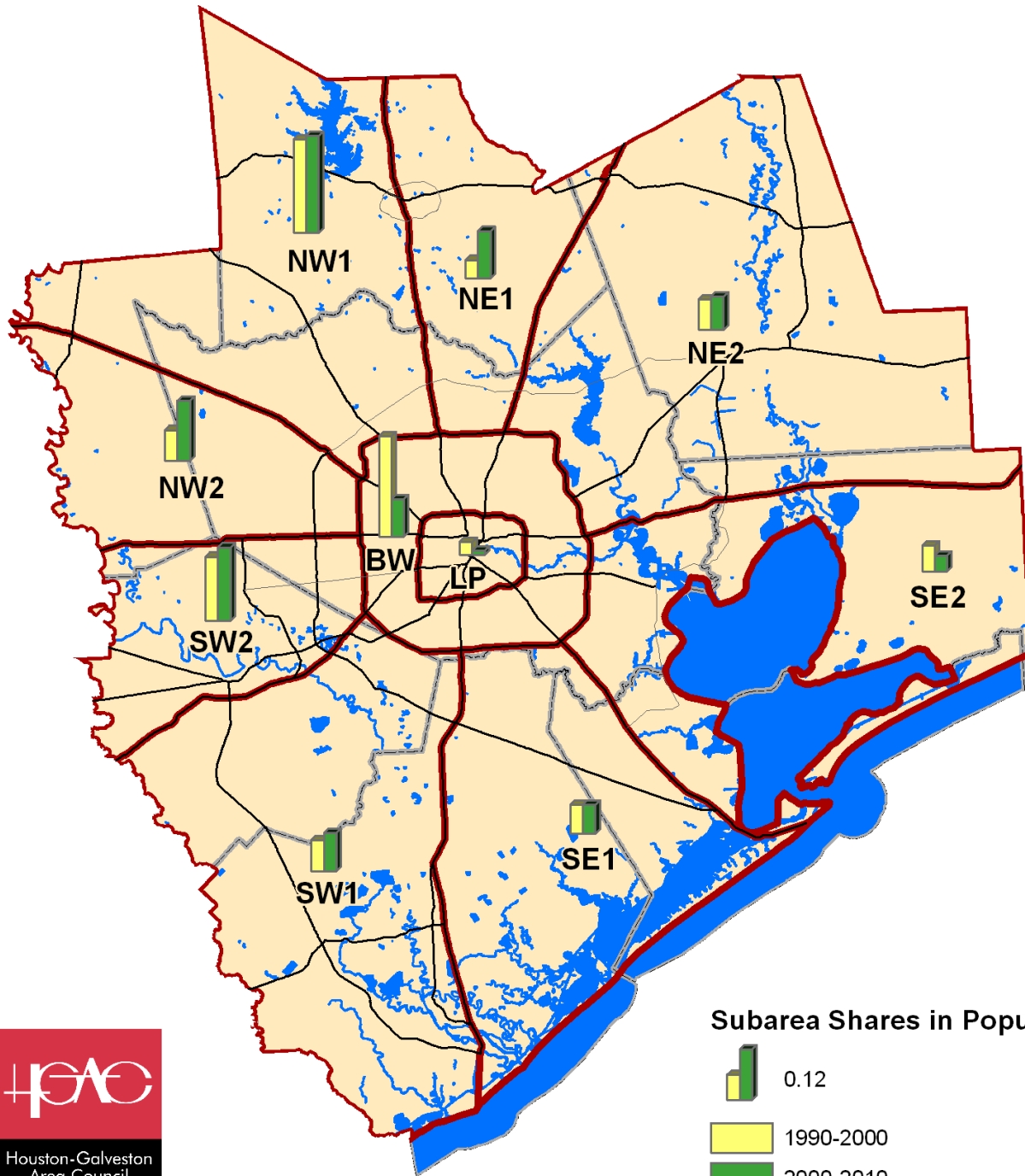
- Decreased by over 50 percentage points
- Decreased by 11 to 50 percentage points
- Unchanged (+/- 10 percentage points)
- Increased by 11 to 50 percentage points
- Increased by over 50 percentage points



Section	Population (000)		
	1990	2000	2010
L610	429	457	469
L610-B8	1,279	1,491	1,596
NE1	160	198	331
NE2	215	279	374
NW1	358	555	826
NW2	141	206	374
SE1	253	314	396
SE2	349	405	449
SW1	215	282	389
SW2	350	486	691
Inside B8	1,708	1,948	2,065
NE	374	478	705
NW	499	760	1,200
SE	602	719	845
SW	566	767	1,080
Region	3,749	4,673	5,895

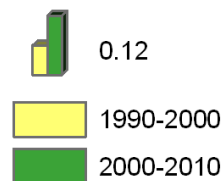
Total Population, 1990-2010

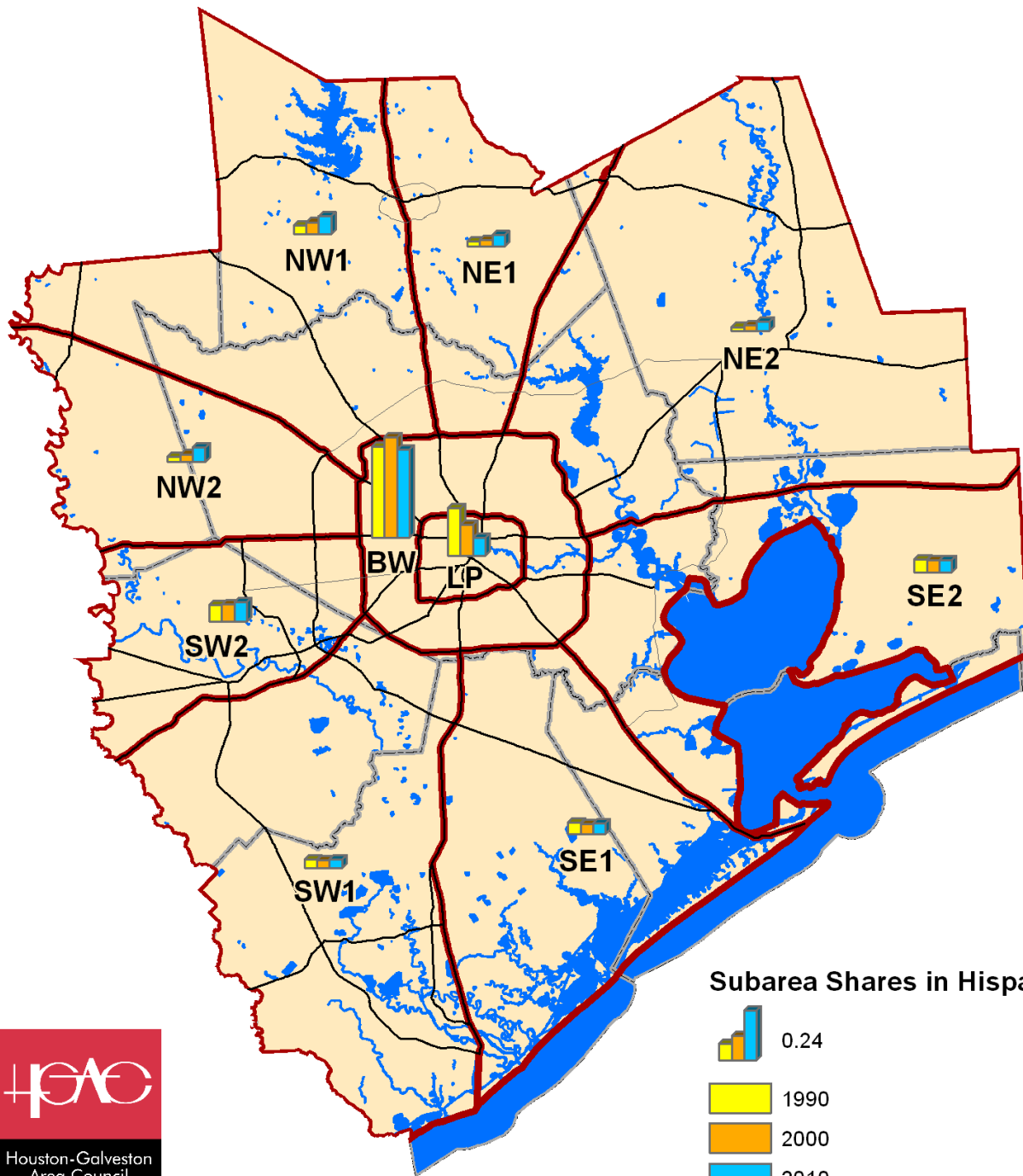




Section	Population Growth Shares	
	1990-2000	2000-2010
L610	3%	1%
L610-B8	23%	9%
NE1	4%	11%
NE2	7%	8%
NW1	21%	22%
NW2	7%	14%
SE1	7%	7%
SE2	6%	4%
SW1	7%	9%
SW2	15%	17%
Inside B8		
NE	26%	10%
NW	11%	19%
SE	28%	36%
SW	13%	10%
SW	22%	26%
Region		
	100%	100%

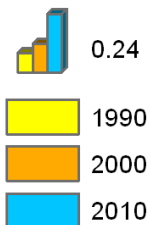
Subarea Shares in Population Growth, 1990-2000 and 2000-2010

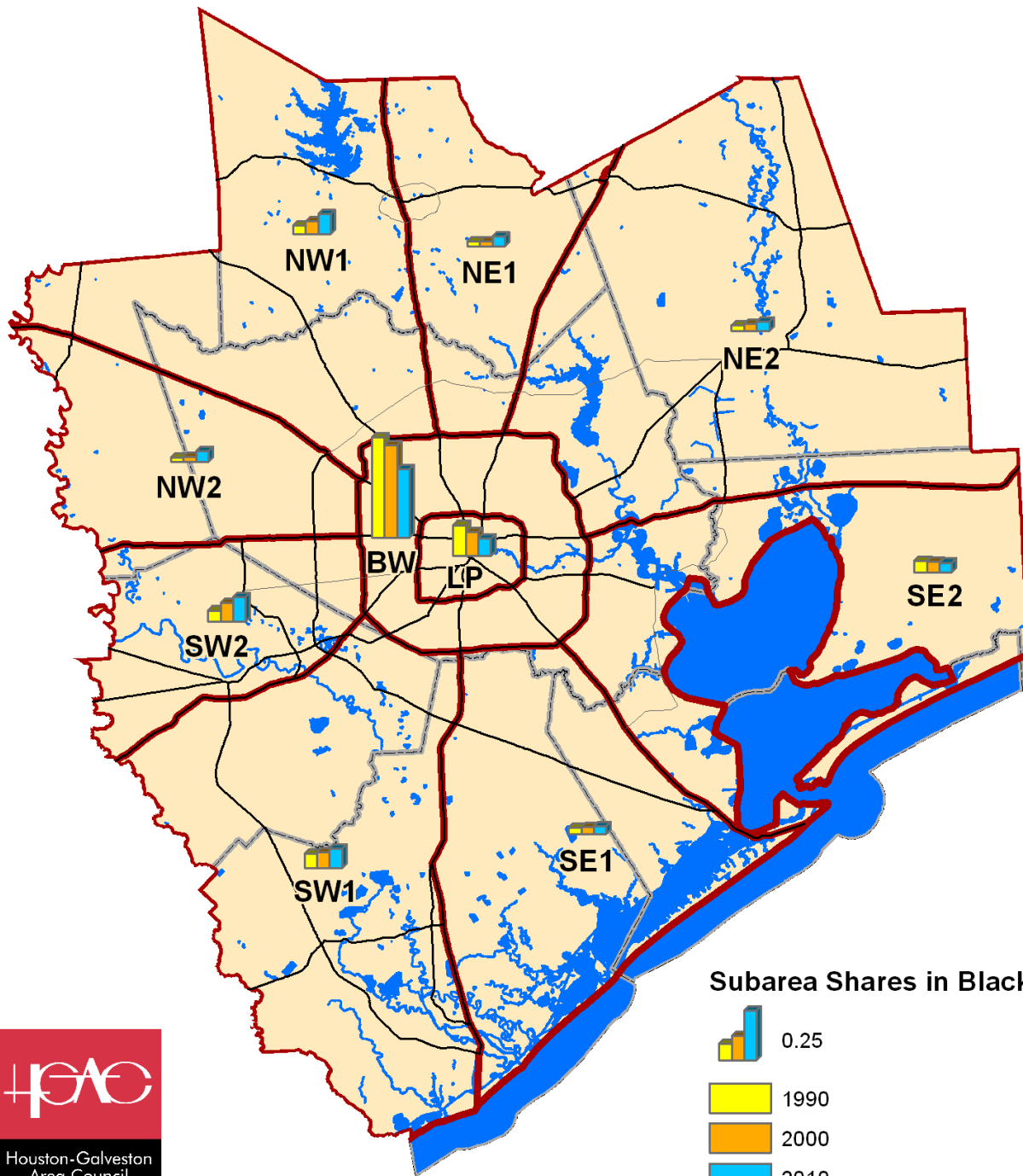




Section	Hispanic Population Shares		
	1990	2000	2010
L610	41%	43%	39%
L610-B8	26%	43%	55%
NE1	12%	21%	35%
NE2	7%	13%	25%
NW1	9%	13%	21%
NW2	13%	24%	38%
SE1	17%	21%	27%
SE2	14%	20%	28%
SW1	15%	19%	23%
SW2	17%	22%	28%
Inside B8	30%	43%	51%
NE	9%	17%	29%
NW	10%	16%	26%
SE	15%	20%	27%
SW	16%	21%	26%
Region	21%	29%	35%

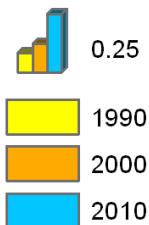
Subarea Shares in Hispanic Population, 1990-2010

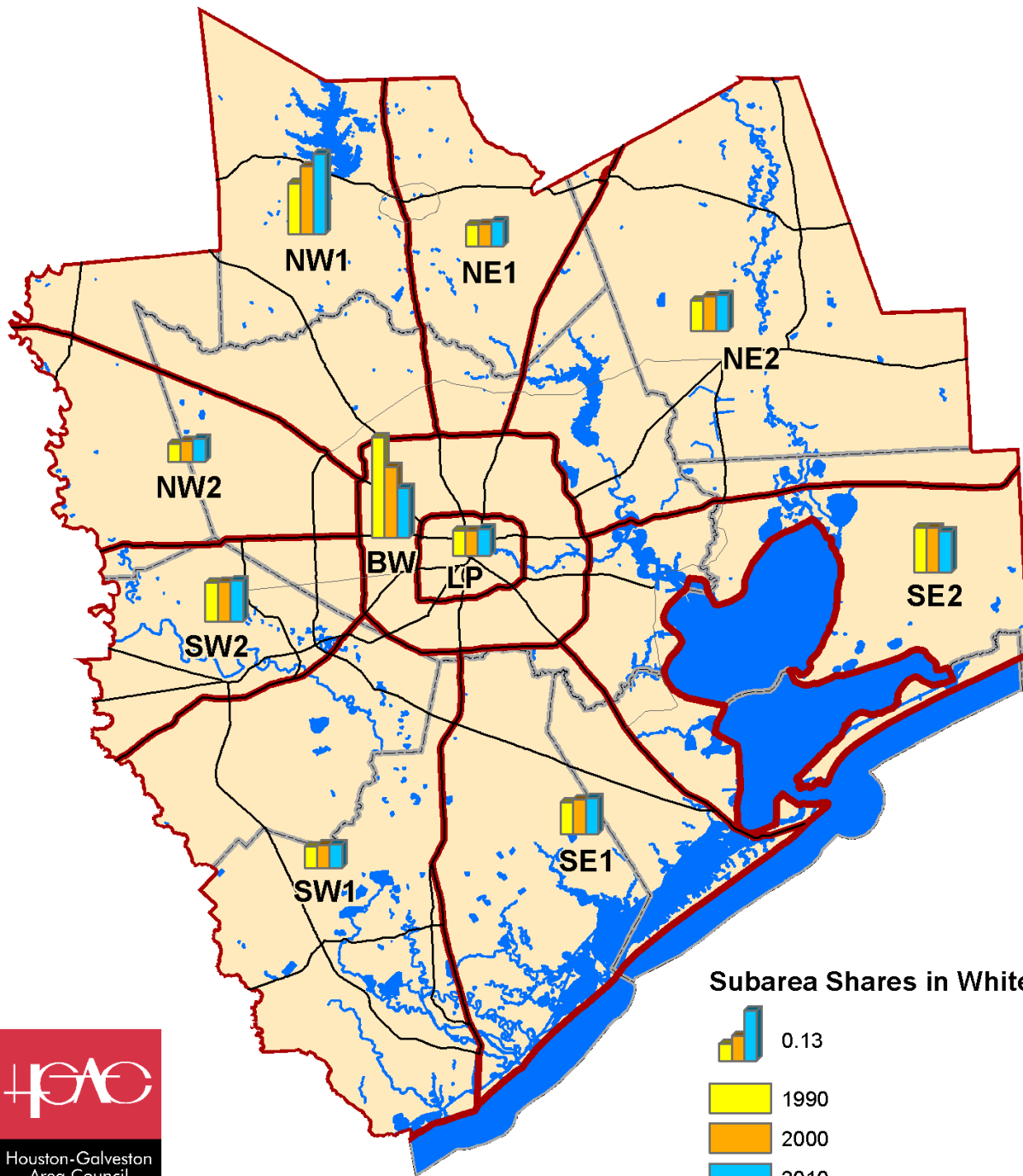




Black Population Shares			
Section	1990	2000	2010
L610	24%	20%	19%
L610-B8	26%	24%	21%
NE1	11%	10%	16%
NE2	10%	10%	13%
NW1	8%	9%	12%
NW2	10%	10%	15%
SE1	9%	9%	10%
SE2	11%	10%	11%
SW1	22%	23%	25%
SW2	10%	15%	18%
Inside B8	25%	23%	21%
NE	10%	10%	14%
NW	8%	9%	13%
SE	10%	10%	11%
SW	15%	18%	20%
Region	17%	17%	17%

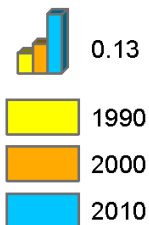
Subarea Shares in Black Population, 1990-2010

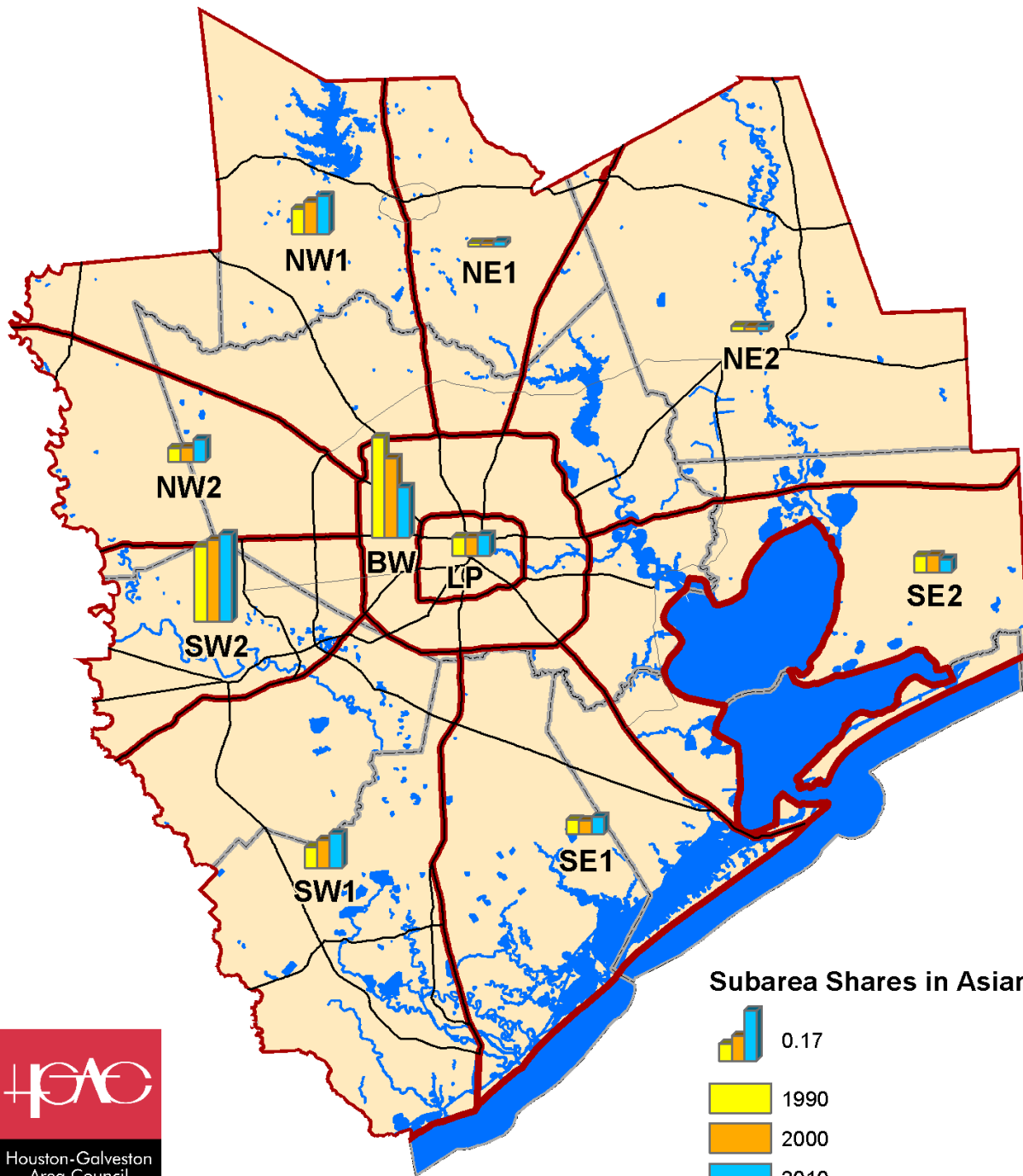




	White Population Shares		
Section	1990	2000	2010
L610	33%	32%	35%
L610-B8	44%	28%	19%
NE1	76%	65%	46%
NE2	81%	73%	59%
NW1	80%	71%	59%
NW2	72%	59%	37%
SE1	72%	65%	56%
SE2	73%	65%	56%
SW1	58%	49%	38%
SW2	63%	47%	36%
Inside B8	42%	29%	22%
NE	79%	70%	53%
NW	78%	68%	52%
SE	72%	65%	56%
SW	61%	48%	36%
Region	58%	48%	39%

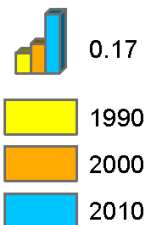
Subarea Shares in White Population, 1990-2010





Asian Population Shares			
Section	1990	2000	2010
L610	2%	3%	6%
L610-B8	3%	4%	4%
NE1	1%	1%	2%
NE2	1%	1%	2%
NW1	3%	4%	6%
NW2	4%	5%	8%
SE1	2%	3%	6%
SE2	2%	3%	4%
SW1	4%	8%	12%
SW2	9%	13%	16%
Inside B8	3%	4%	4%
NE	1%	1%	2%
NW	3%	5%	7%
SE	2%	3%	5%
SW	7%	11%	15%
Region	3%	5%	7%

Subarea Shares in Asian Population, 1990-2010



Thank you

Questions?