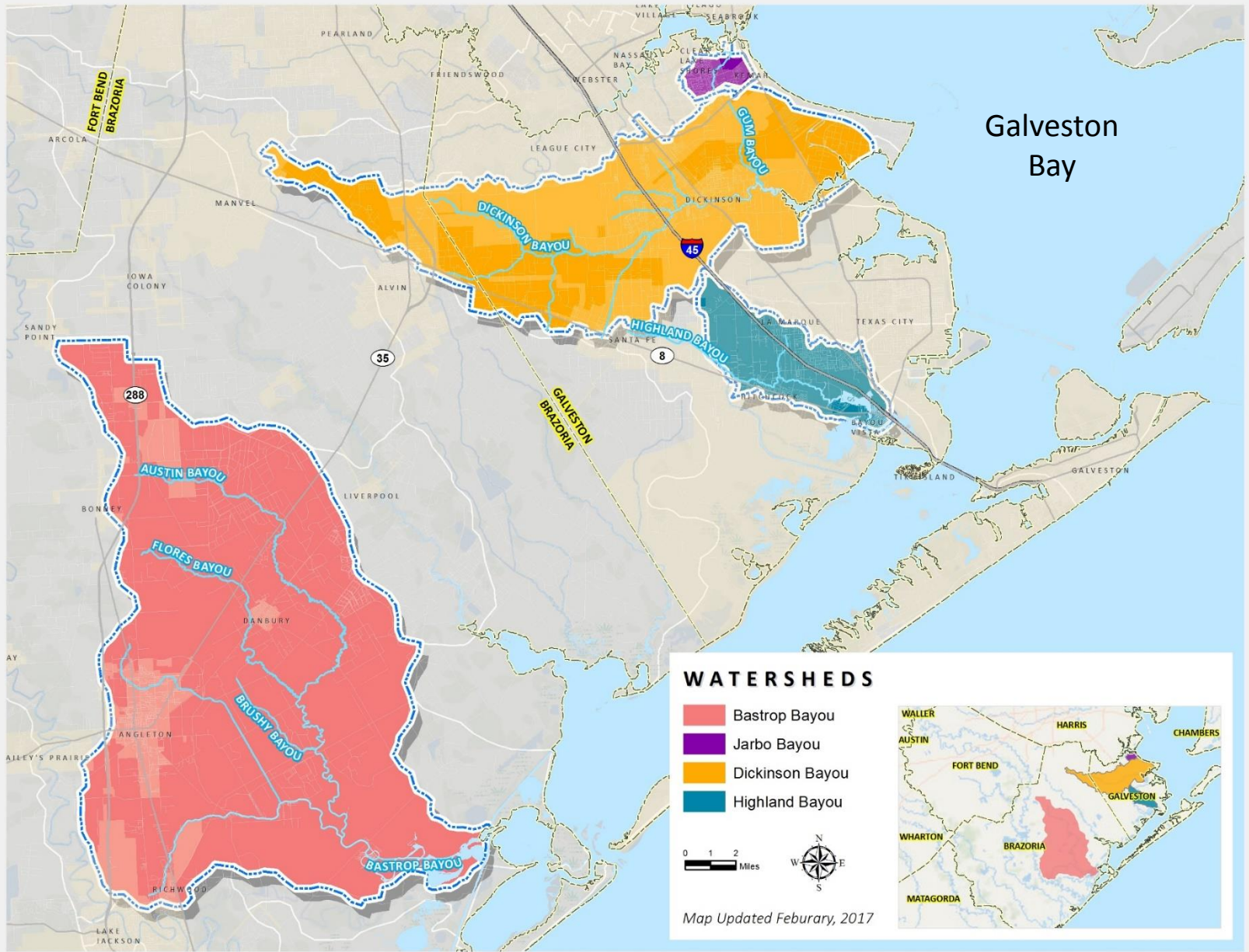


# Galveston Bay Coalition of Watersheds



Charriss York  
cyork@tamu.edu  
281-694-5508

# Galveston Bay



## WATERSHEDS

-  Bastrop Bayou
-  Jarbo Bayou
-  Dickinson Bayou
-  Highland Bayou



Map Updated February, 2017





# Bastrop Bayou

- **Size:** 139,166 acres (217 square miles)
- **Stream length:** 35 miles (tidal and non-tidal portions)
- **Population:** 10,534 households
- **County:** Brazoria
- **Cities:** Angleton, Lake Jackson, Danbury, Richwood, Demi-John
- **Land use:** This watershed is primarily rural and agricultural in character, with a few urban centers.
- **Type of Plan:** *Watershed Protection Plan (Approved by EPA 2016)*
- **Project website:** [bastropbayou.org](http://bastropbayou.org)
- **Key bacteria related water quality issues:** Septic systems (OSSFs), wildlife and feral hogs, urban runoff, pet waste, livestock, illegal dumping

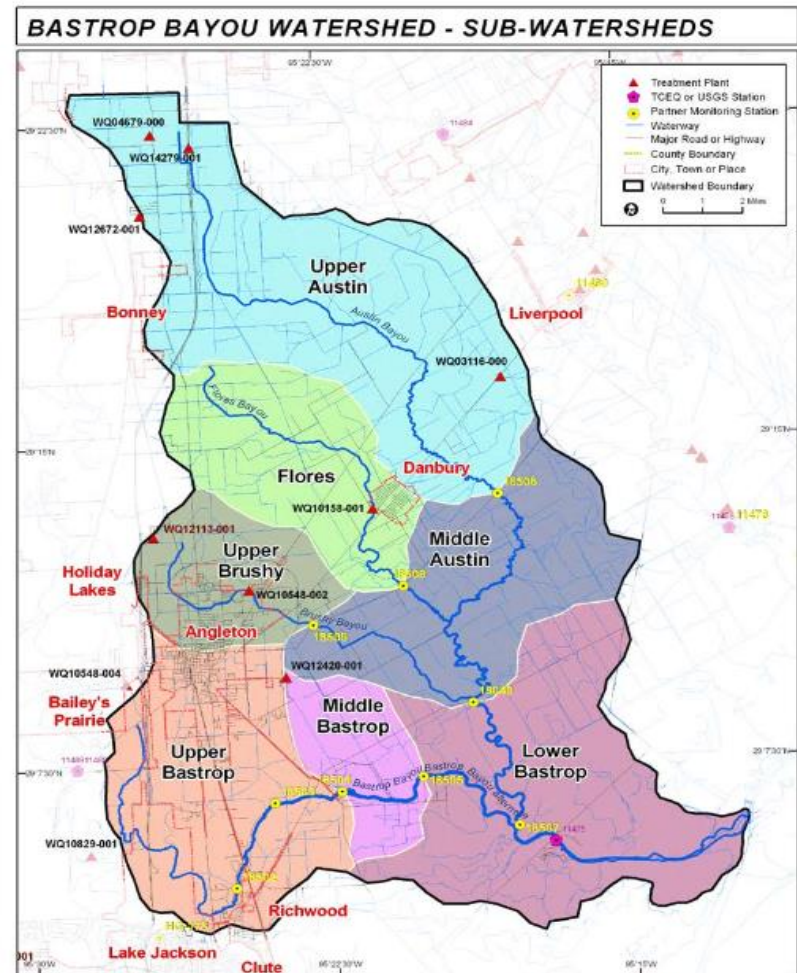


Figure 3 - Bastrop Bayou, its Subwatersheds, and Monitoring Locations

# Dickinson Bayou

**Size:** 67,840 acres (106 square miles)

**Stream length:** 23 miles (tidal and non-tidal portions)

**Population:** 75,000+

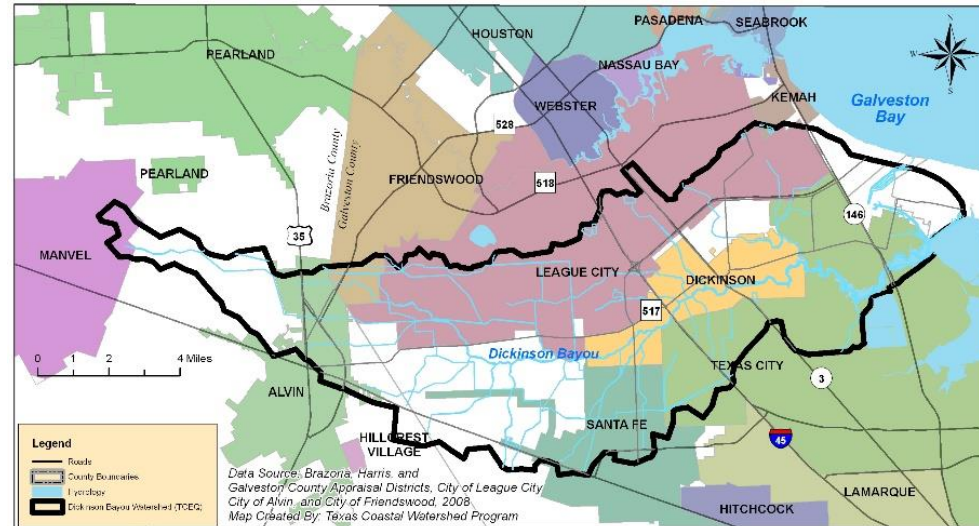
**Counties:** Galveston and Brazoria

**Cities:** Alvin, Dickinson, Manvel, League City, Friendswood, Texas City, Kemah, and Santa Fe

**Land use:** 40% developed land

**Type of Plan:** *Bacteria Implementation Plan (Approved by TCEQ 2014)*

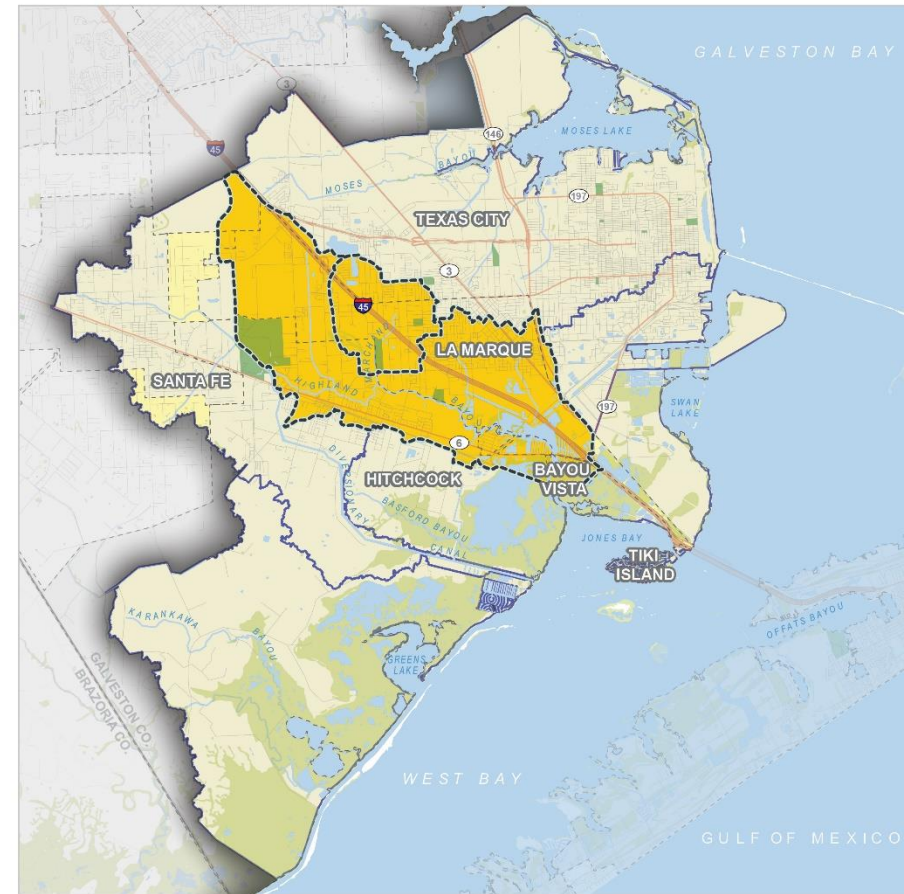
**Project website:** [dickinsonbayou.net](http://dickinsonbayou.net)



**Key bacteria related water quality issues:** Septic systems (OSSFs), Wastewater treatment facilities, sanitary sewer systems, feral hogs, pet waste, deteriorating riparian zones, urban runoff

# Highland Bayou

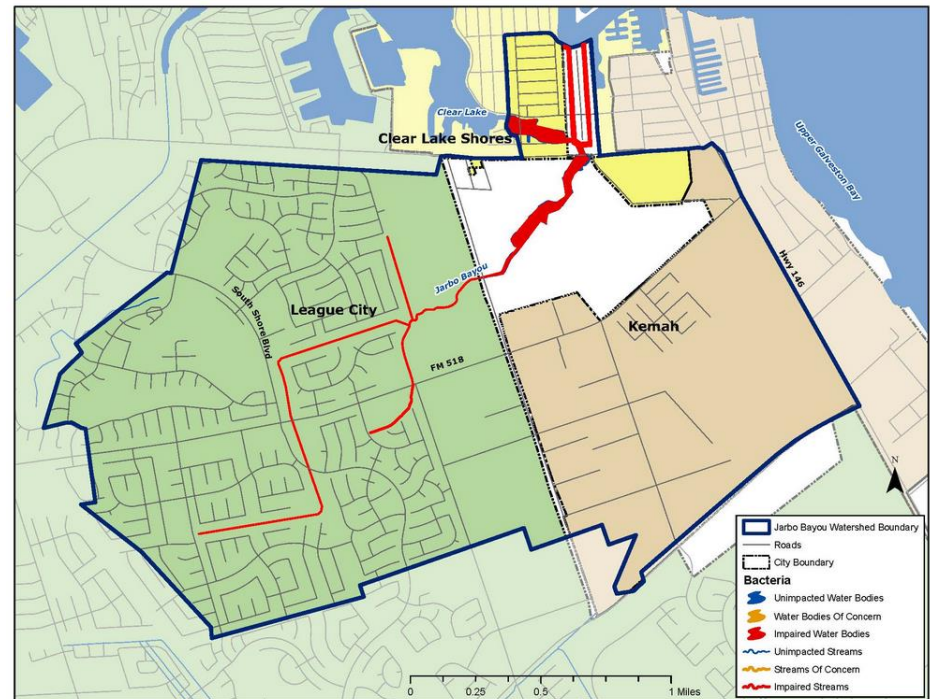
- **Size:** 14,720 acres (23 square miles)
- **Stream length:** 7.5 miles
- **Population:** 22,000
- **County:** Galveston
- **Cities:** Hitchcock, La Marque, Texas City, Bayou Vista, Santa Fe
- **Land use:** low and medium intensity development, open space
- **Type of Plan:** *Watershed Protection Plan (not approved)*
- **Project website:** [agrilife.org/highlandbayou](http://agrilife.org/highlandbayou)
- **Key bacteria related water quality issues:** wastewater, flow & dredging, urbanization & development, agriculture/wildlife/natural areas



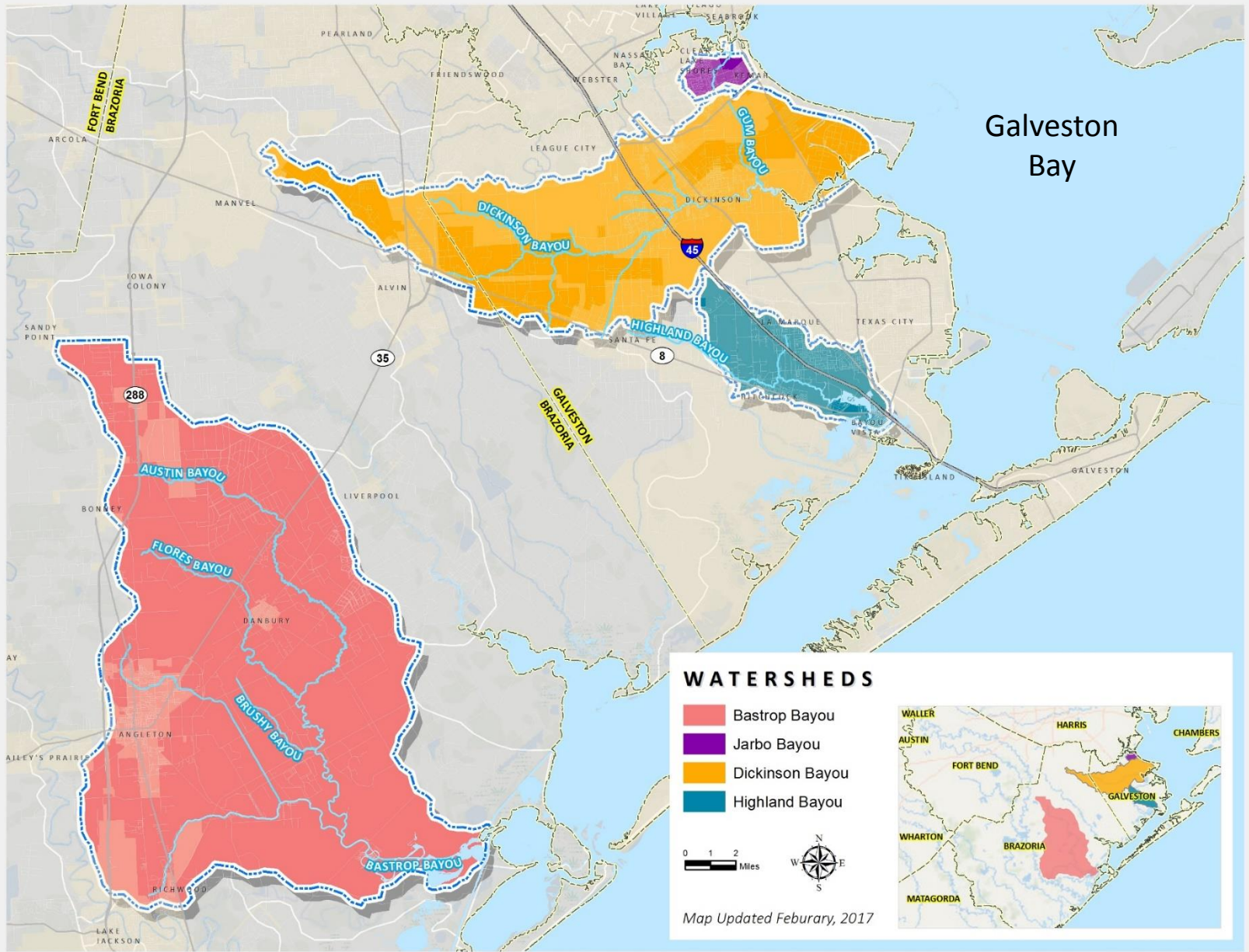


# Jarbo Bayou

- **Size:**
- **Stream length:** 2.7 miles
- **Population:** 11,000
- **County:** Galveston
- **Cities:** League City, Kemah, Clear Lake Shores
- **Land use:** primarily urban
- **Type of Plan:** *Accepted as part of the Bacteria Implementation Group in 2015 (BIG approved by TCEQ 2013)*
- **Project website:** <http://www.h-gac.com/community/water/tmdl/big/studies/jarbo-bayou.aspx>
- **Key bacteria related water quality issues:** sanitary sewer overflows, urban runoff, boater waste (not currently in I-Plan)

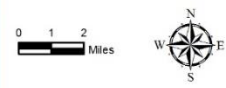


# Galveston Bay



## WATERSHEDS

-  Bastrop Bayou
-  Jarbo Bayou
-  Dickinson Bayou
-  Highland Bayou



Map Updated February, 2017



# Why a Coalition?

- Work across watersheds to:
  - Implement existing watershed based plans
  - Reduce the overall number of meetings that stakeholders and technical advisors are asked to attend





# Why a Coalition?

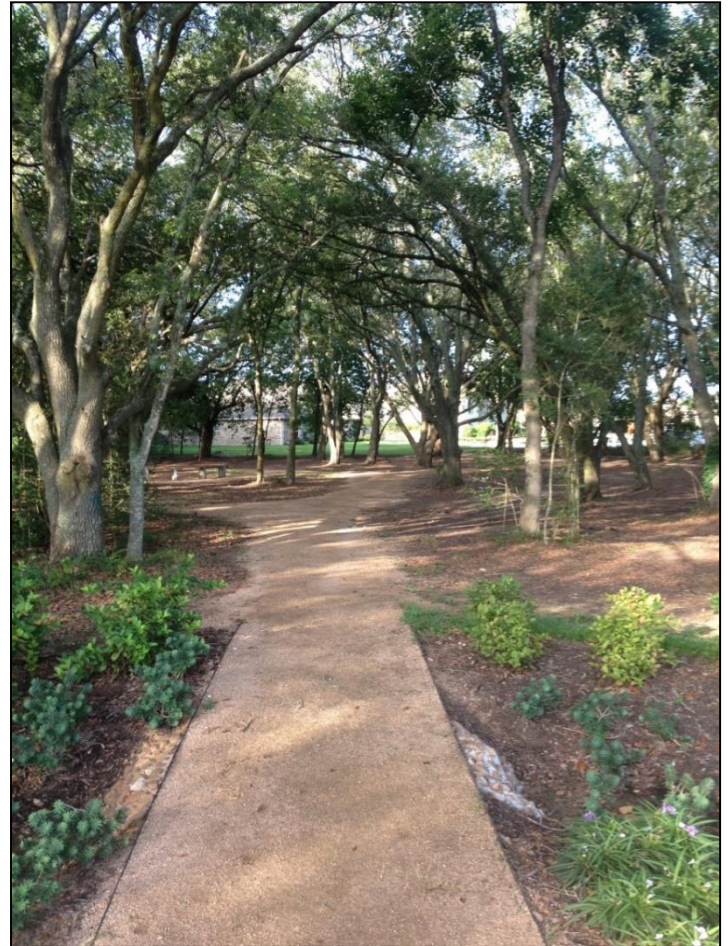
- Provide opportunities to increase partnership
  - There is power in numbers
- Same or similar implementation activities
- Efficient use of resources

Stormwater/Urban Runoff		
21	Continue existing and encourage expansion of stormwater management programs	•••••
22	Retain and treat stormwater on-site or in regional detention features using green infrastructure (rain gardens, bio-swales, rain water harvesting) and stormwater wetlands. (pilot projects, demonstrations, education, etc.)	•••••
23	Revise ordinances and codes to allow for green infrastructure practices, especially in new development	•••••
24	Increase compliance with and enforcement of stormwater management permits	•••••
25	Decrease and minimize the introduction of lawn debris and nutrients into stormwater through ordinances, education and enforcement	••
26	Publicize contact information for reporting violations and poor disposal practices	



# Path Forward

- Form Coalition and begin meeting on a monthly basis
- Identify top areas of concern
  - Determine goals
  - Determine projects
  - Acquire project funding
  - Formulate long term funding plan







**BACK THE BAY.  
BACK THE BAYOUS.**

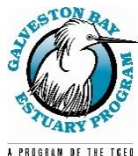


**YOU'RE MORE CONNECTED THAN YOU THINK.**

The Galveston Bay watershed covers approximately 75,000 square miles and extends north of Dallas and West. In most cases of the Texas, Texas, water, and energy that we rely on, the water flows are connected to the Galveston Bay watershed of water, we provide the link. Visit [backthebay.org](http://backthebay.org)



# Galveston Bay Coalition of Watersheds



Charriss York  
cyork@tamu.edu  
281-694-5508