

# New and Ongoing TMDL Projects in the BIG Area

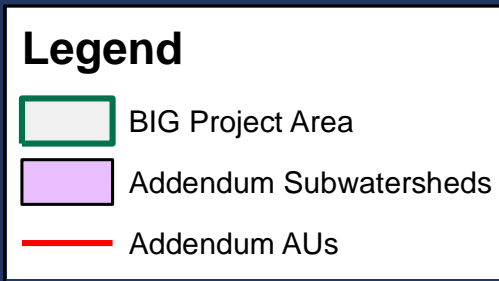
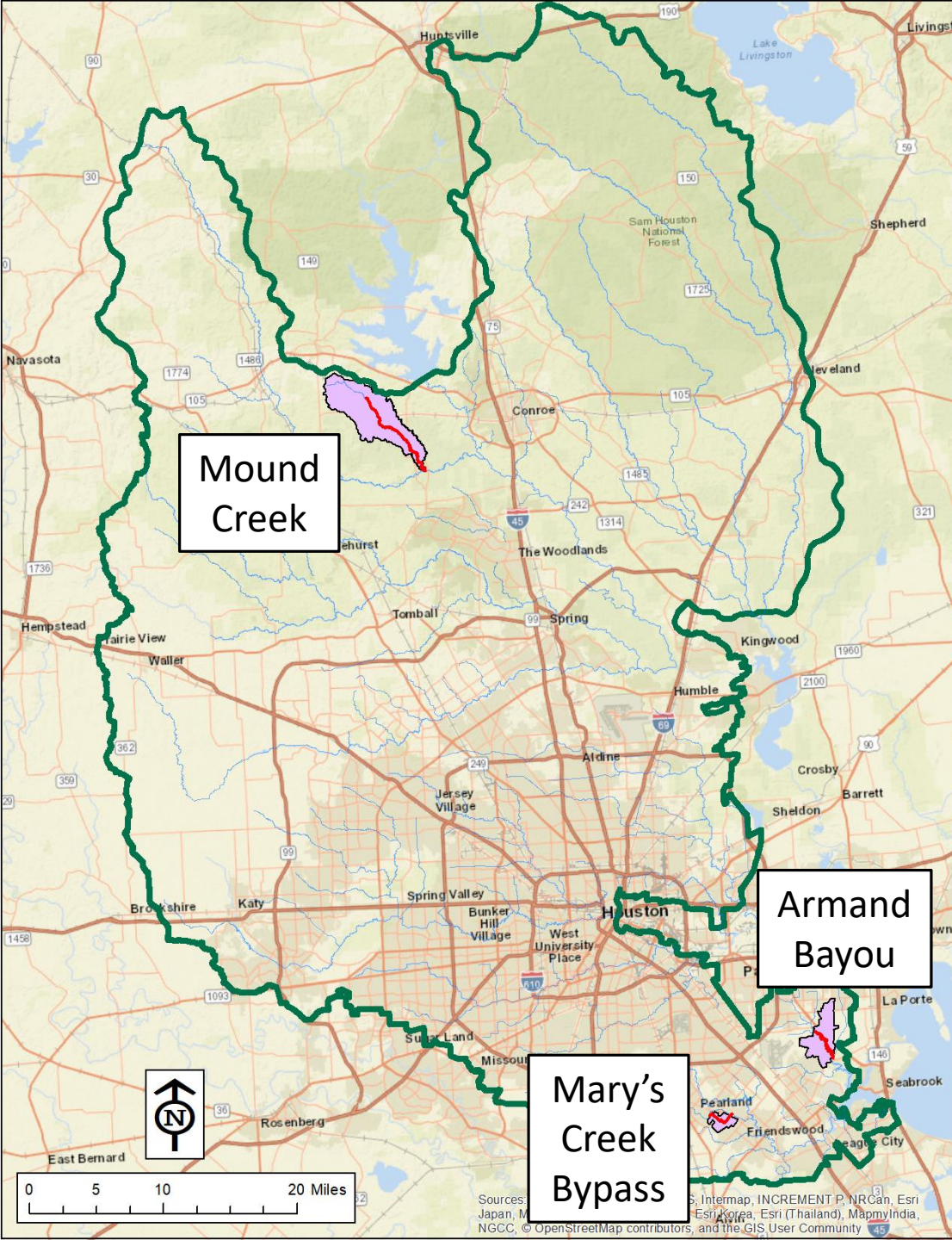
Jason Leifester  
TCEQ  
TMDL Program

October 23, 2018



# Three Addenda – October WQMP Update

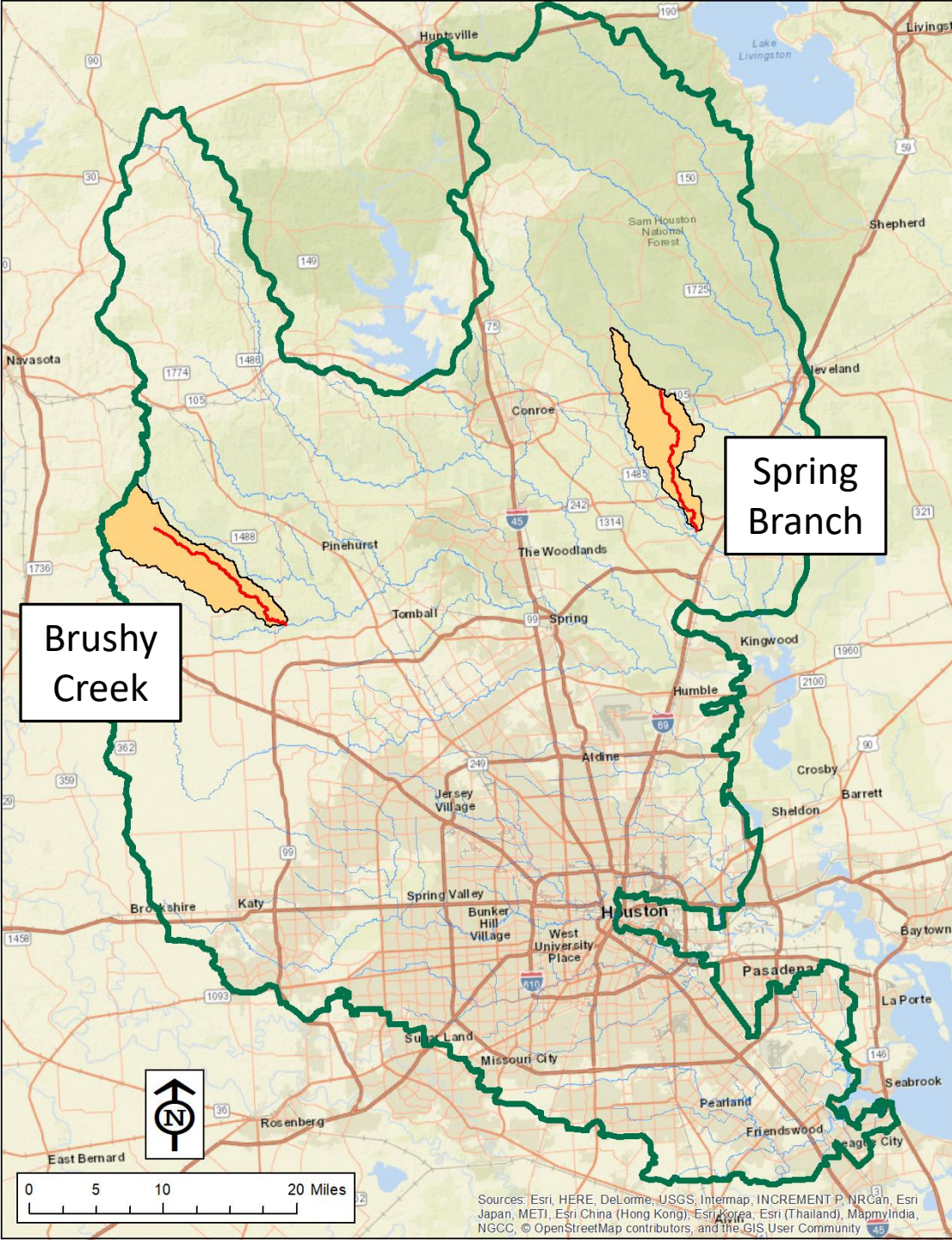
- Mound Creek – 1015A\_01
- Mary's Creek Bypass – 1102F\_01
- Armand Bayou Tidal – 1113\_03
- Technical support documents are on the TCEQ web page now (links can be provided upon request).
- WQMP update with all three addenda will be posted:
  - [https://www.tceq.texas.gov/permitting/wqmp/WQmanagement\\_comment.html](https://www.tceq.texas.gov/permitting/wqmp/WQmanagement_comment.html)
  - Comment period: November 9 – December 11



# New Addendum Project

- Brushy Creek – 1008J\_01
- Spring Branch – 1010C\_01

Technical work just getting underway by TIAER.



# Potential TMDL Update

- Stewarts Creek – 1004E\_02
- Large (12.0 MGD) facility proposed within the subwatershed.
- Original TMDL had no future growth component.
- Working with EPA to determine best course of action.





# Questions?

[Jason.Leifester@tceq.texas.gov](mailto:Jason.Leifester@tceq.texas.gov)

(512) 239-6457