



FY25 Targeted Monitoring Project-1006D_02 (Halls Bayou)

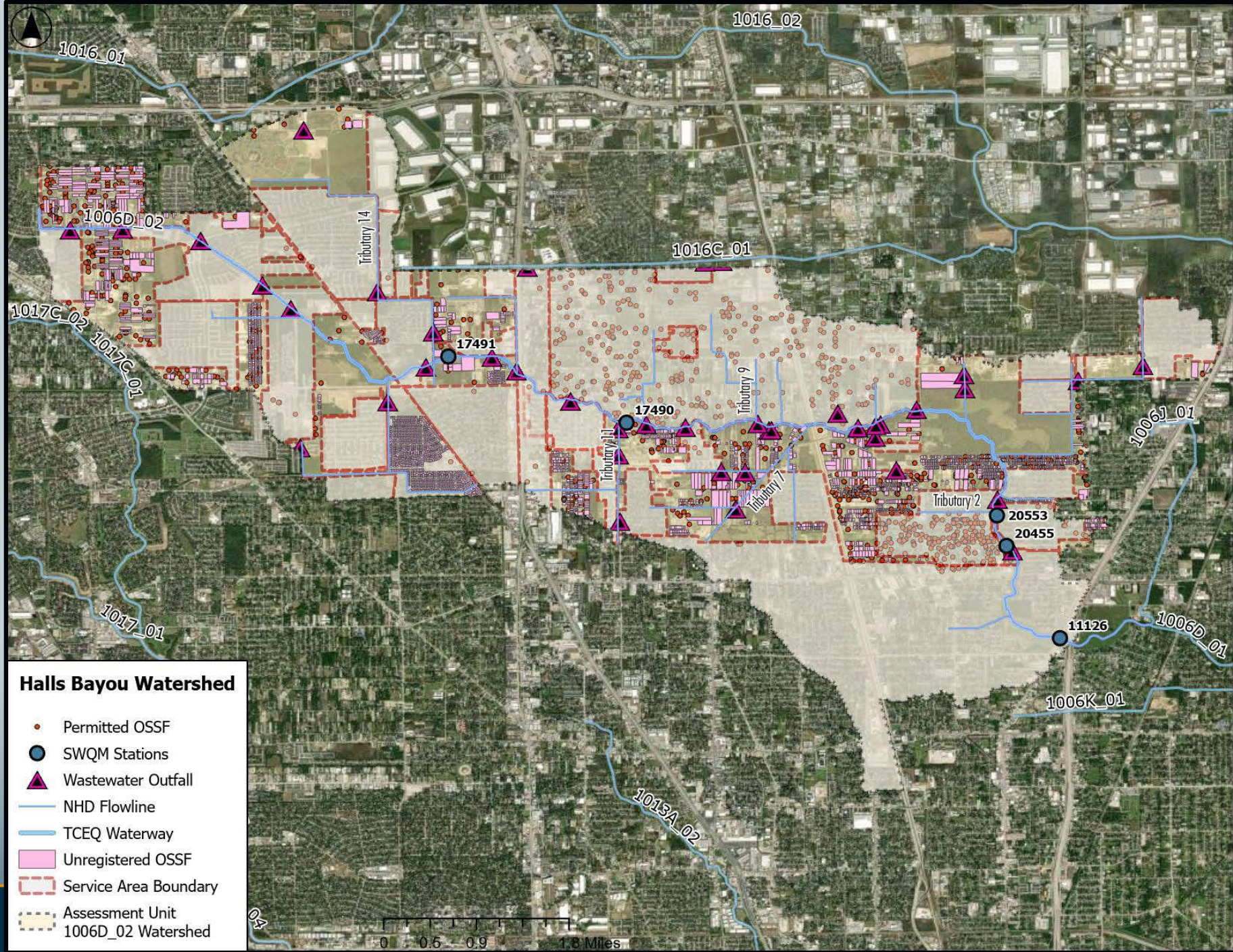
Background

- Bacteria (*E. coli*) continues to be the Houston-Galveston areas most prevalent pollutant
 - 144 impaired assessment units (AUs) in the BIG project area
- H-GAC ranked AUs based on the 7 year geomean
 - standard for bacteria concentrations is 126 MPN
- Thank you to all previous monitoring efforts
 - Bayou Preservation Association, Environmental Institute of Houston, Texas Research Institute for Environmental Studies

Study Design & Location

- **Purpose:** identify illicit discharges and other potential sources of bacteria in a watershed and refer exceedances to proper jurisdictions for remediation
 - ≥ 72 hours with no significant rainfall
- **3 Phases**
 - Desktop Review, Windshield Survey, Field Investigation & Referral
- **Halls Bayou**
 - 20.6 miles
 - 1,062.24 MPN





Windshield Survey



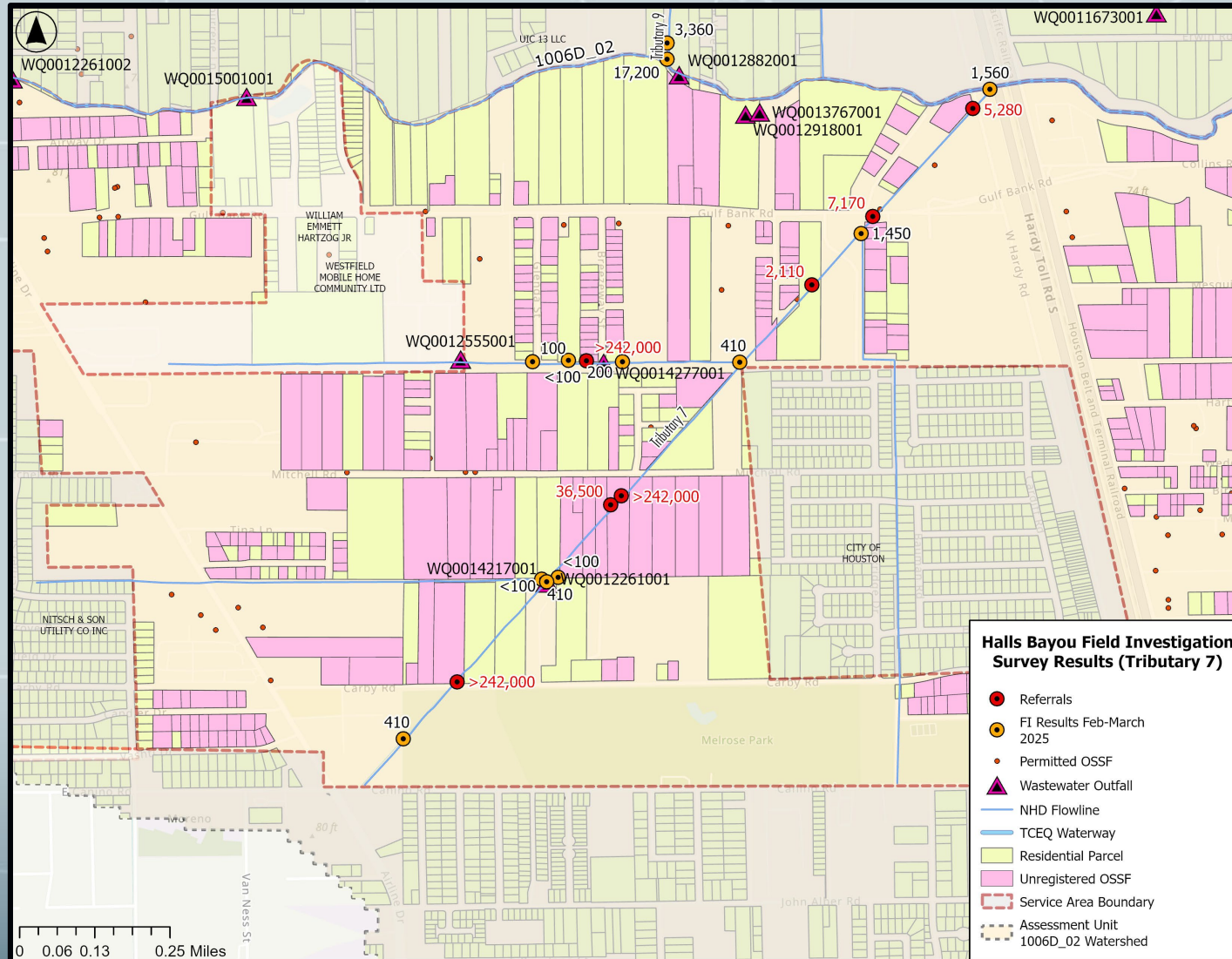
- 28 samples collected
- Highest values were samples collected at 5 tributaries
 - Tributary 7 – 3,150
 - Tributary 14 – 5,120
 - Tributary 2 – 5,730
 - Tributary 9 – 8,300
 - Tributary 11 – >242,000

Field Investigation

- 122 total samples collected
- 6 miles traversed
- 19 referrals across 4 tributaries

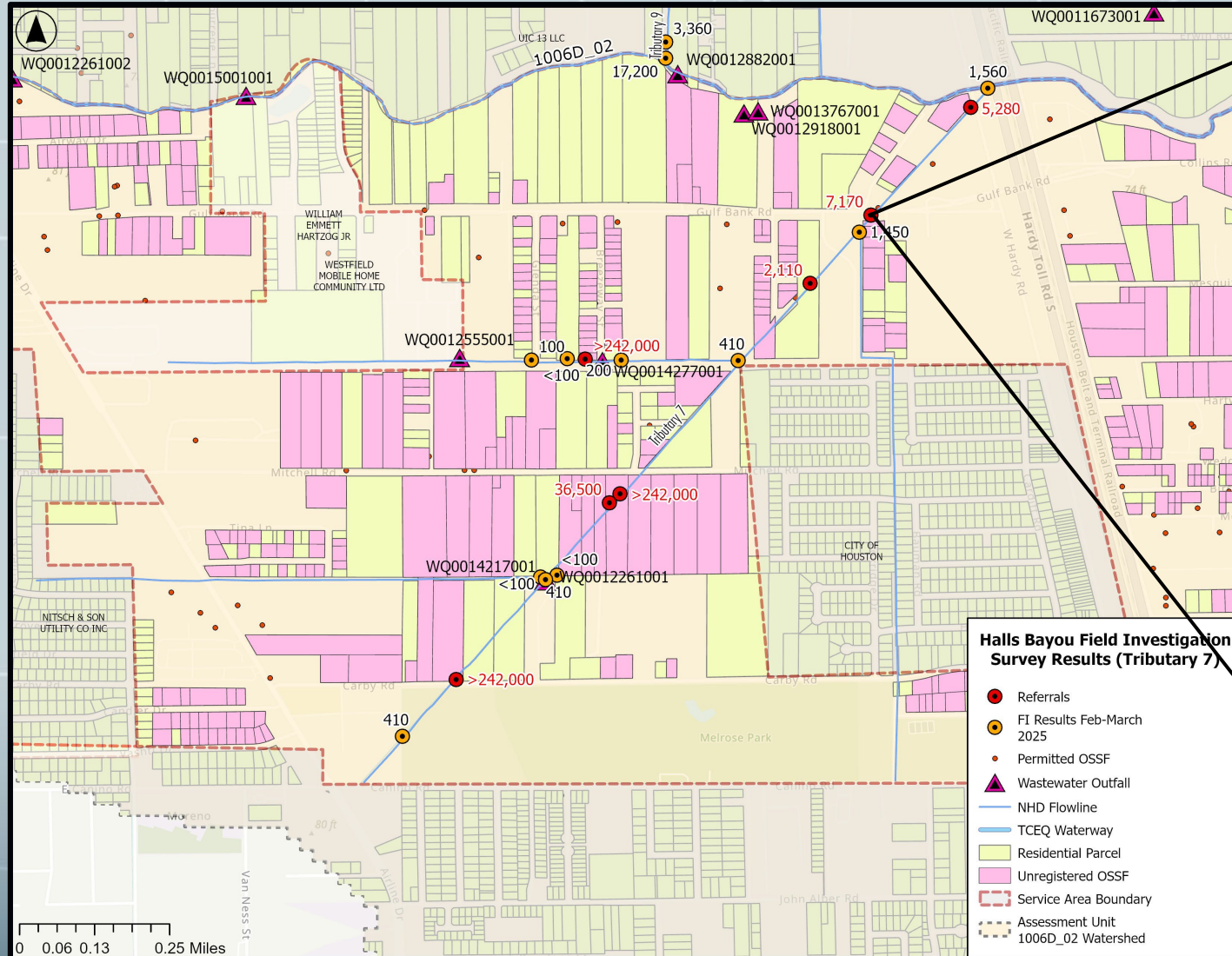


Tributary 7



- 7 referrals
- 3 samples >242,000

Tributary 7



Referral Site: FI-T7-03P (7,170 cfu/100 mL)

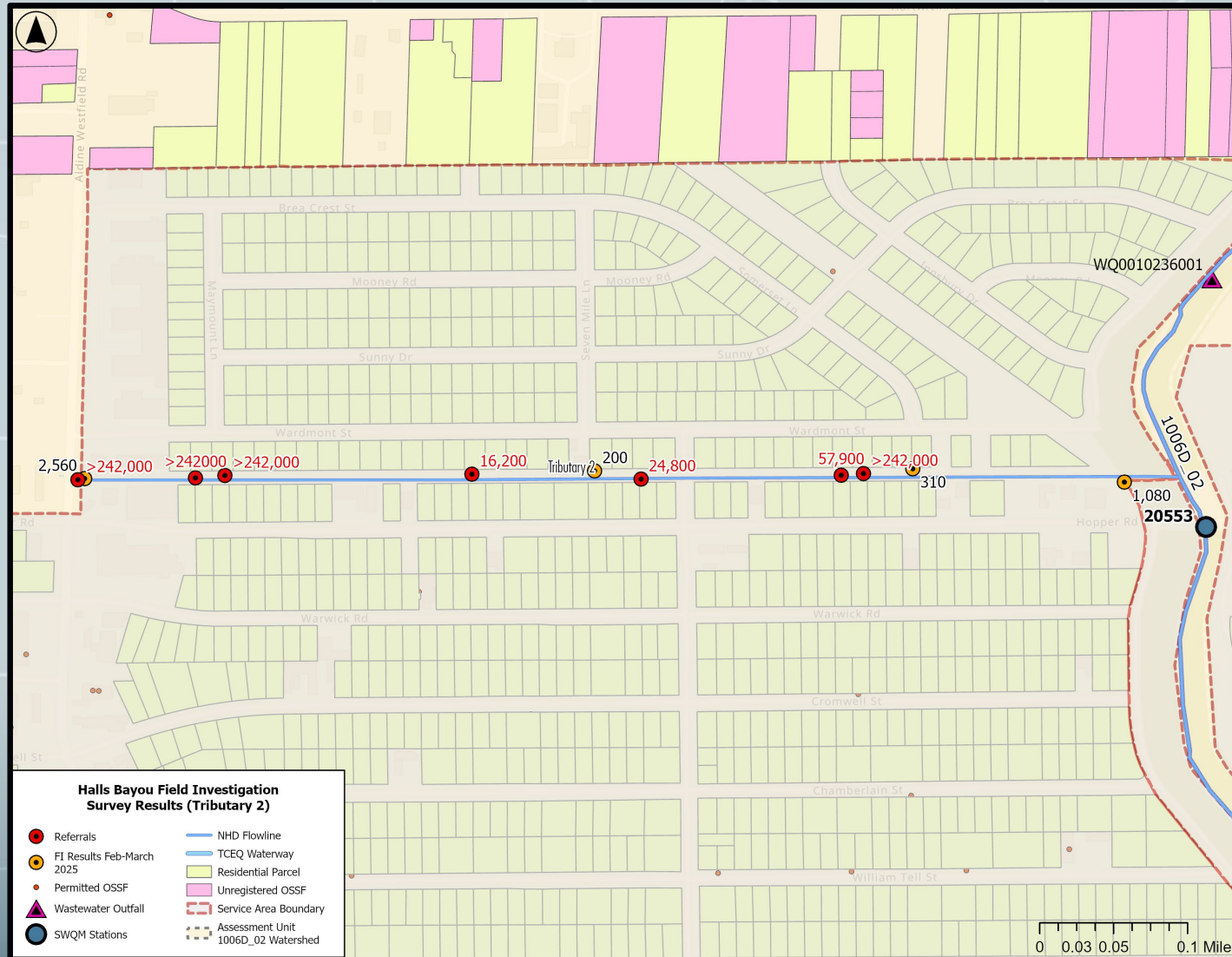
Latitude: 29.8894

Longitude: -95.3735

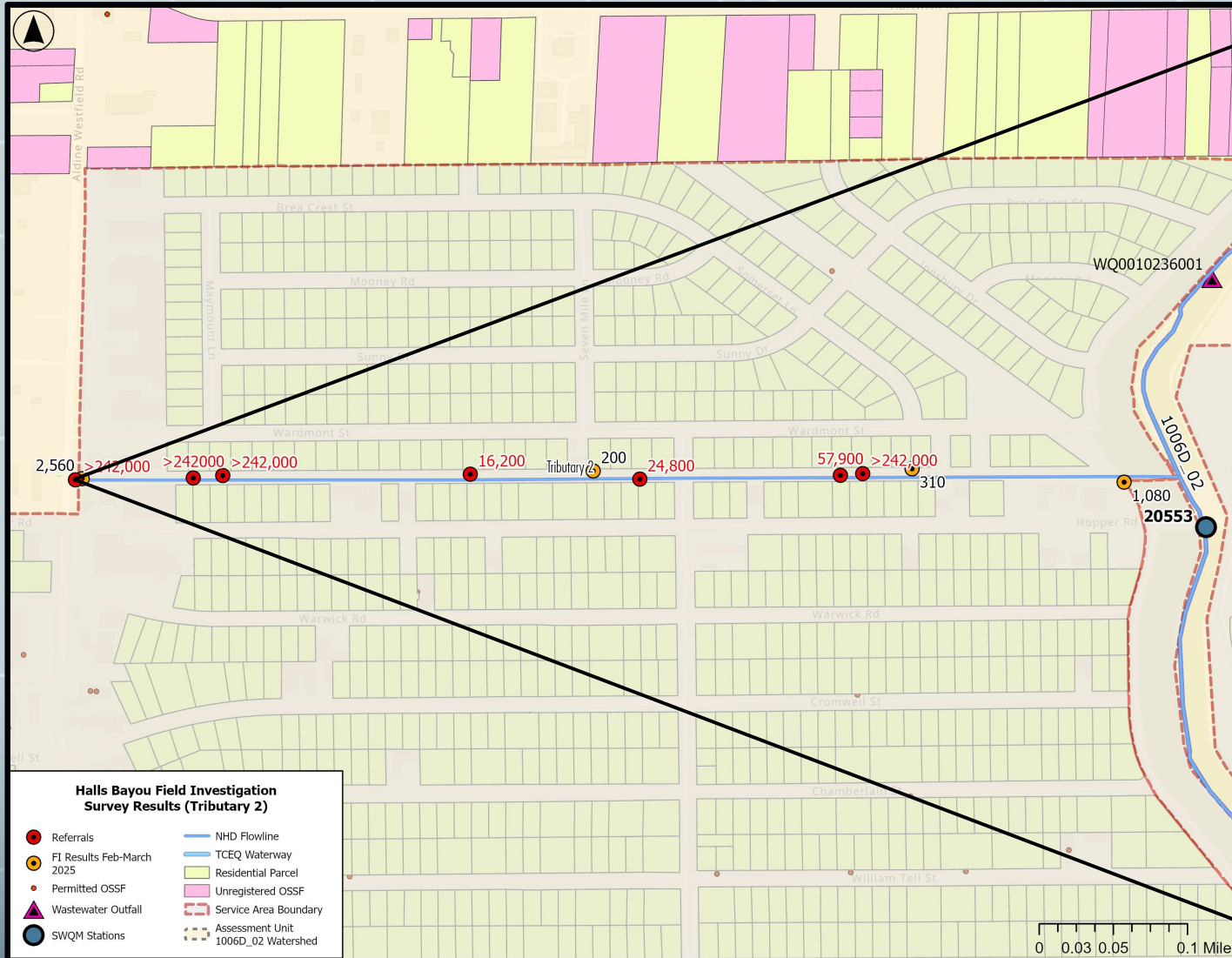


Tributary 2

- 7 referrals
- 4 samples >242,000



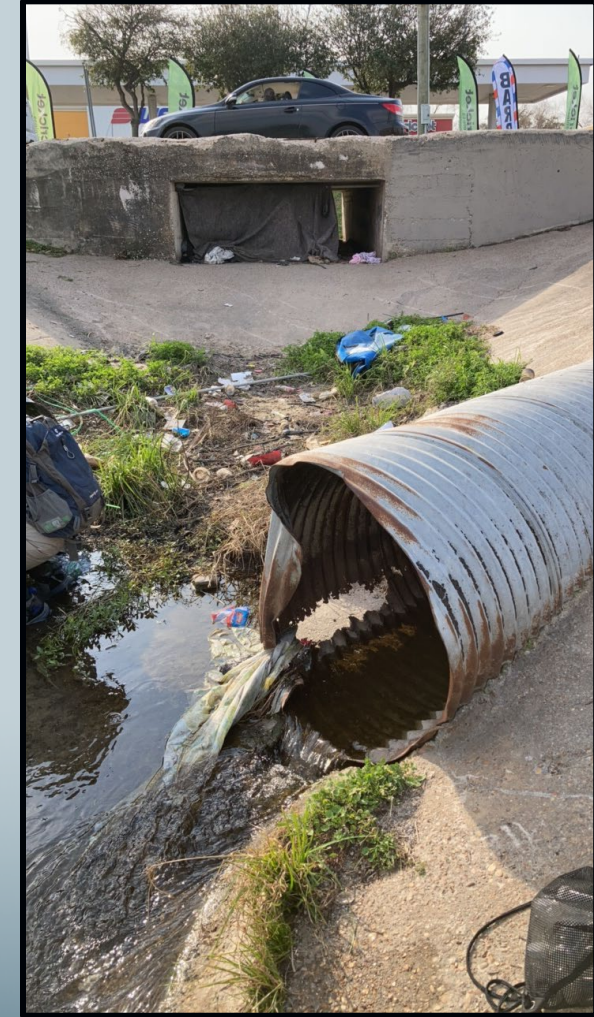
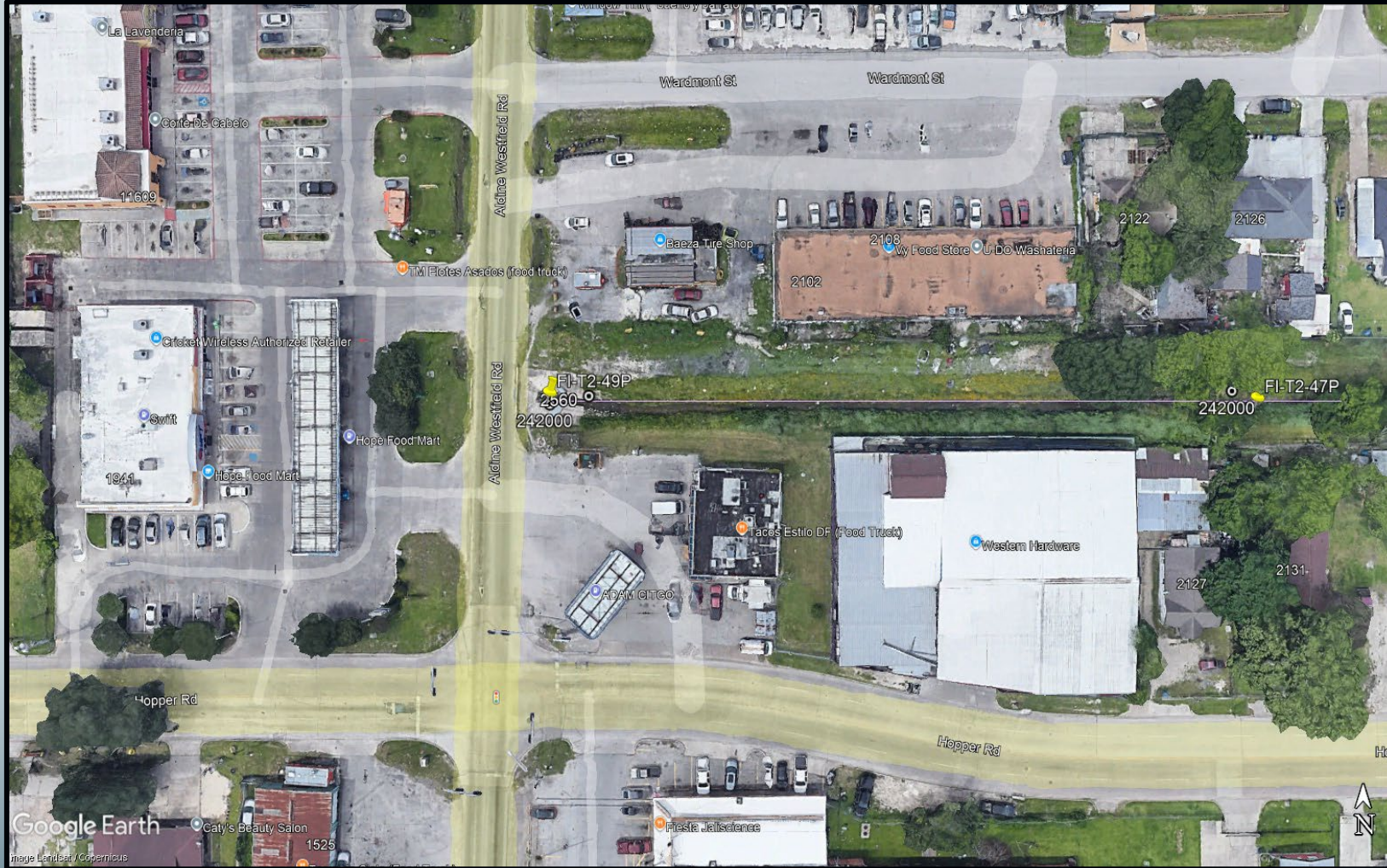
Tributary 2



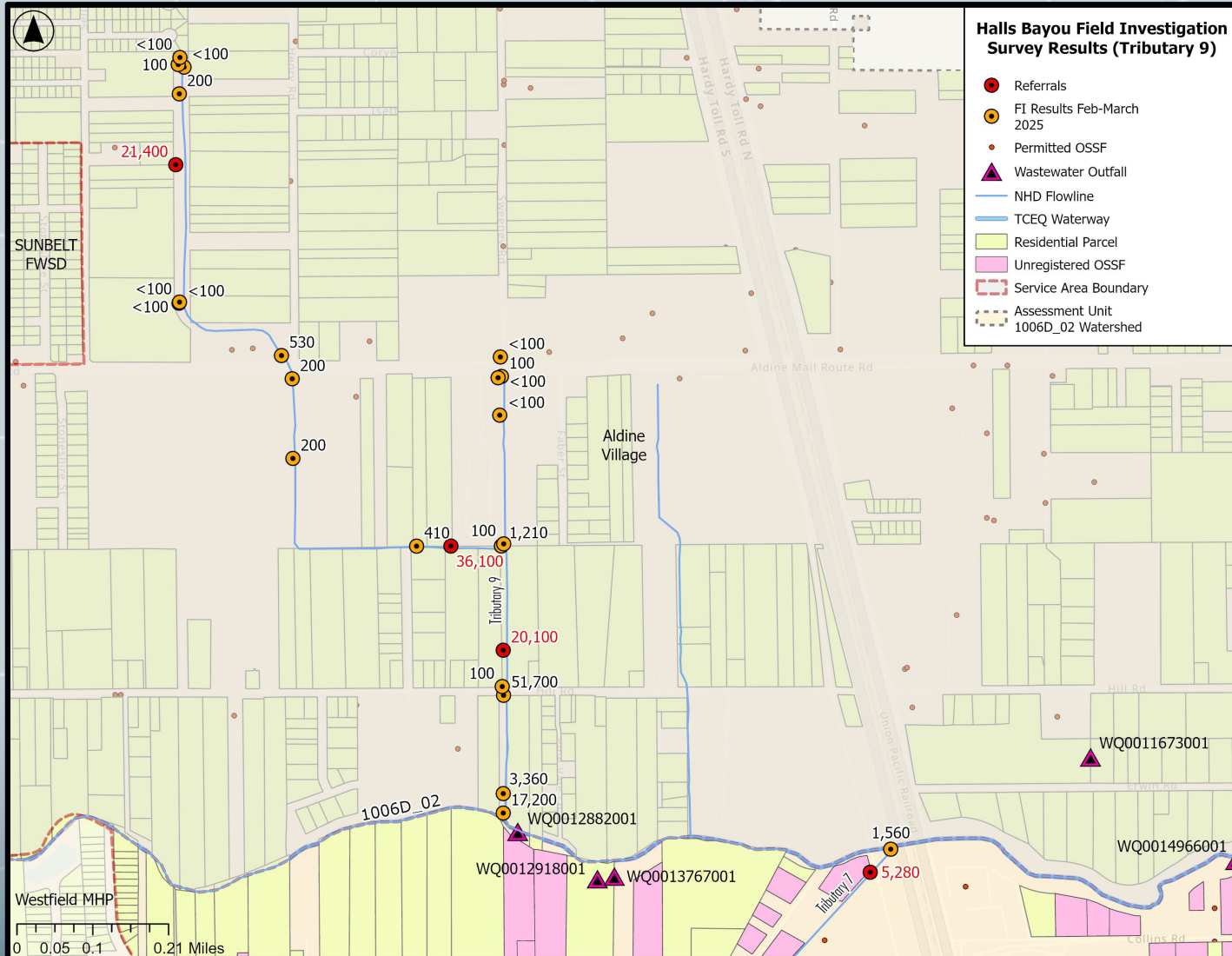
Referral Site: FI-T2-49P (>242,000 cfu/100 mL)

Latitude: 29.8800

Longitude: -95.3551

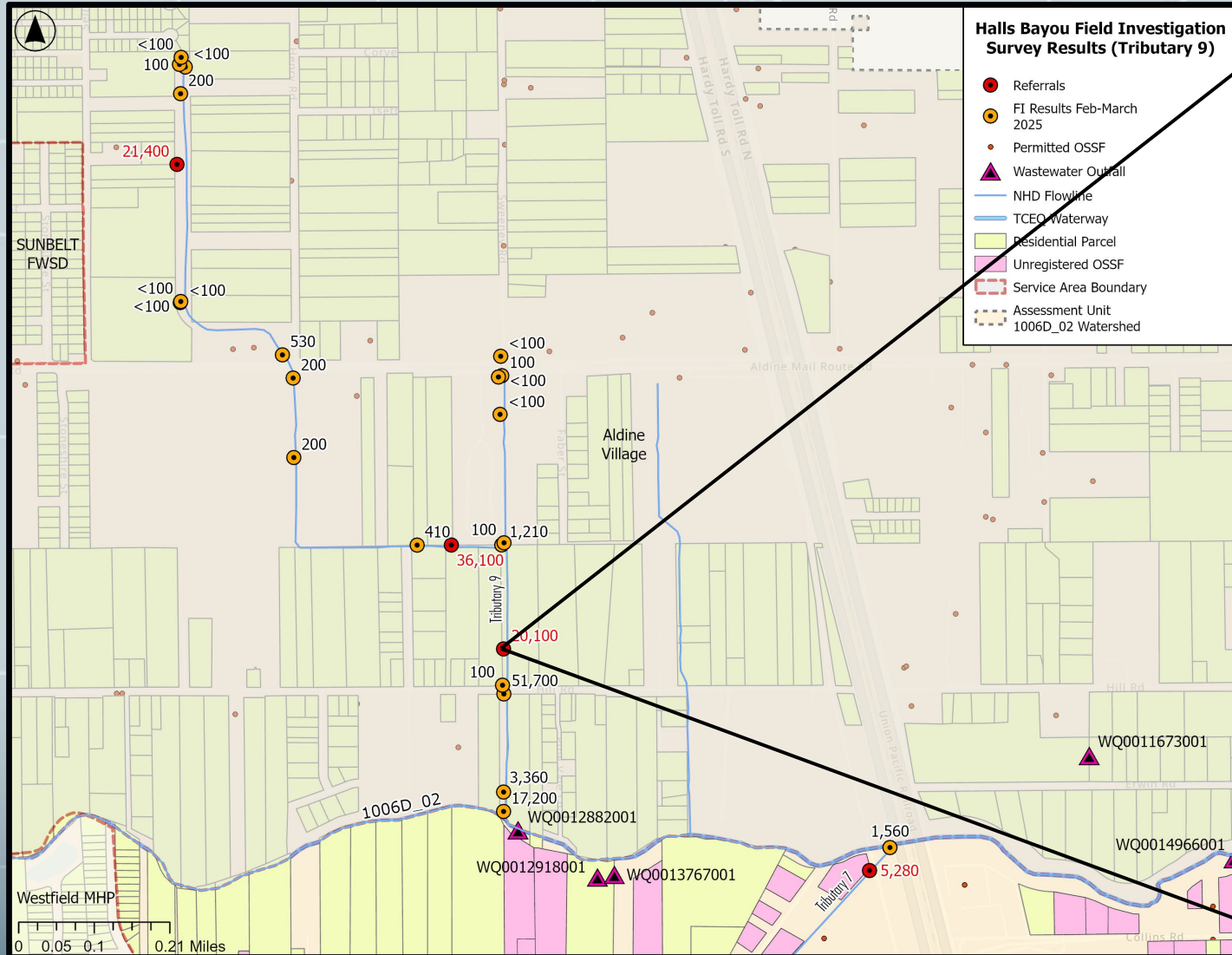


Tributary 9



- 3 referrals
- Highest result- 36,100

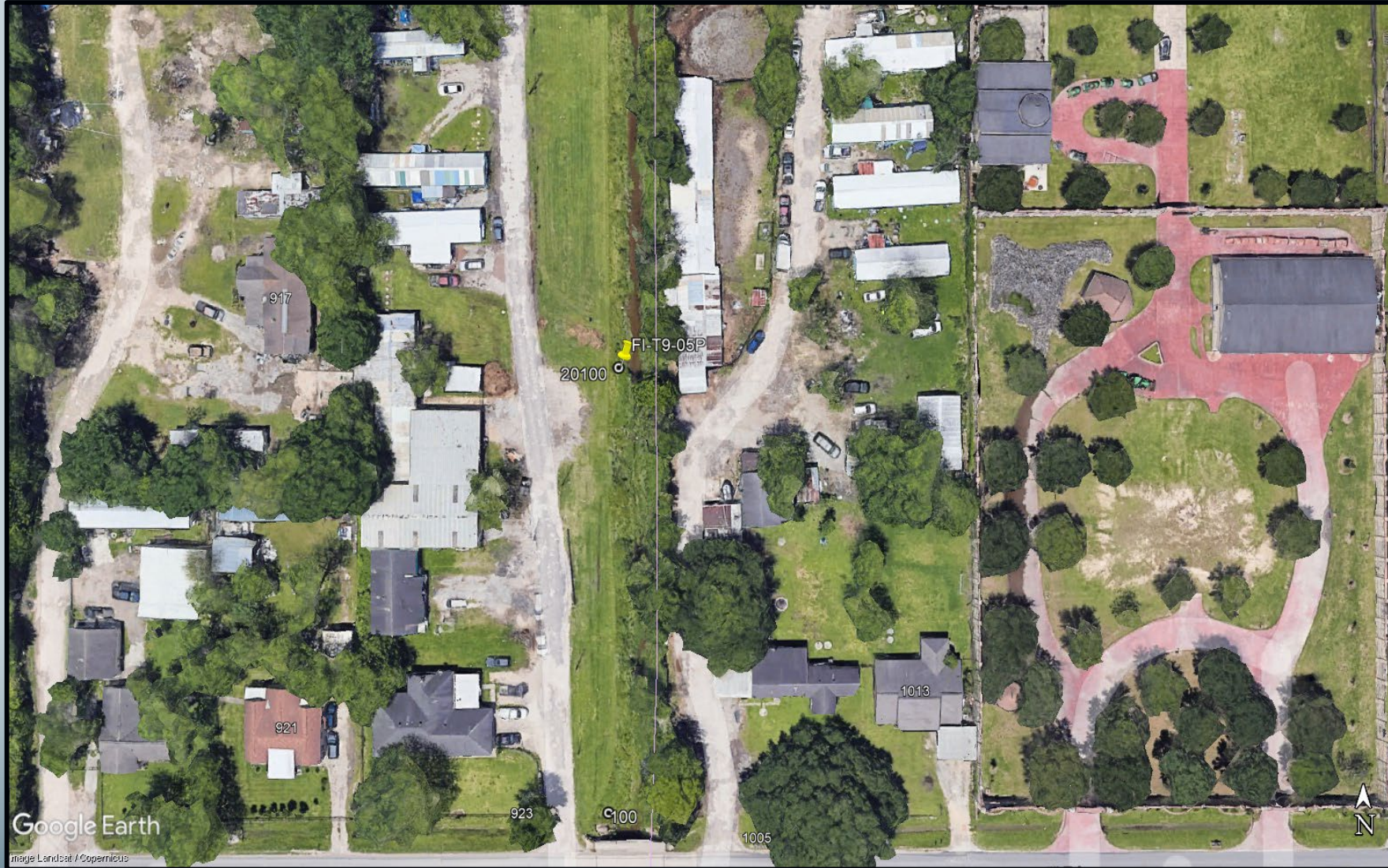
Tributary 9



Referral Site: FI-T9-05P (20,100 cfu/100 mL)

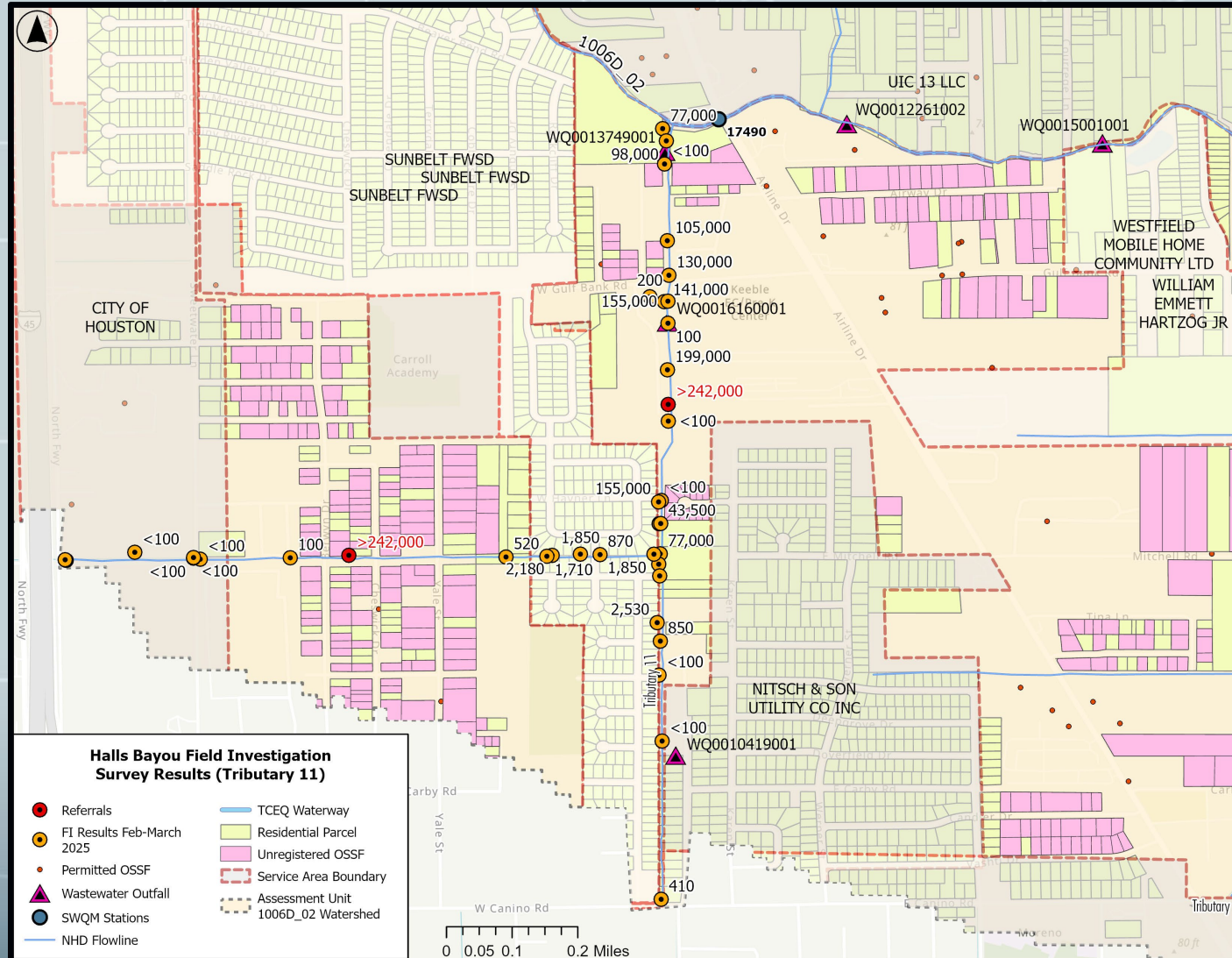
Latitude: 29.8964

Longitude: -95.3785

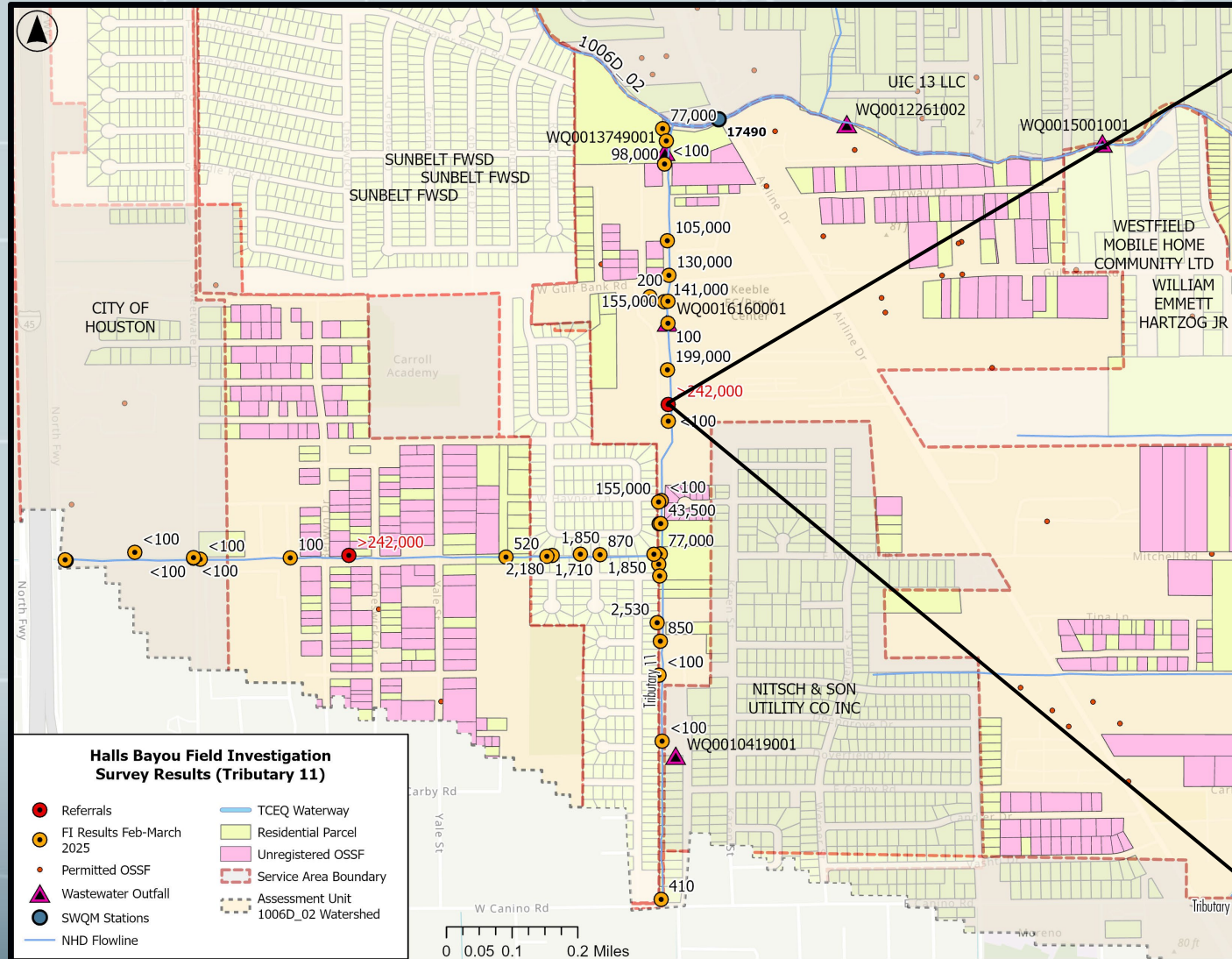


Tributary 11

- 2 referrals
- >242,000



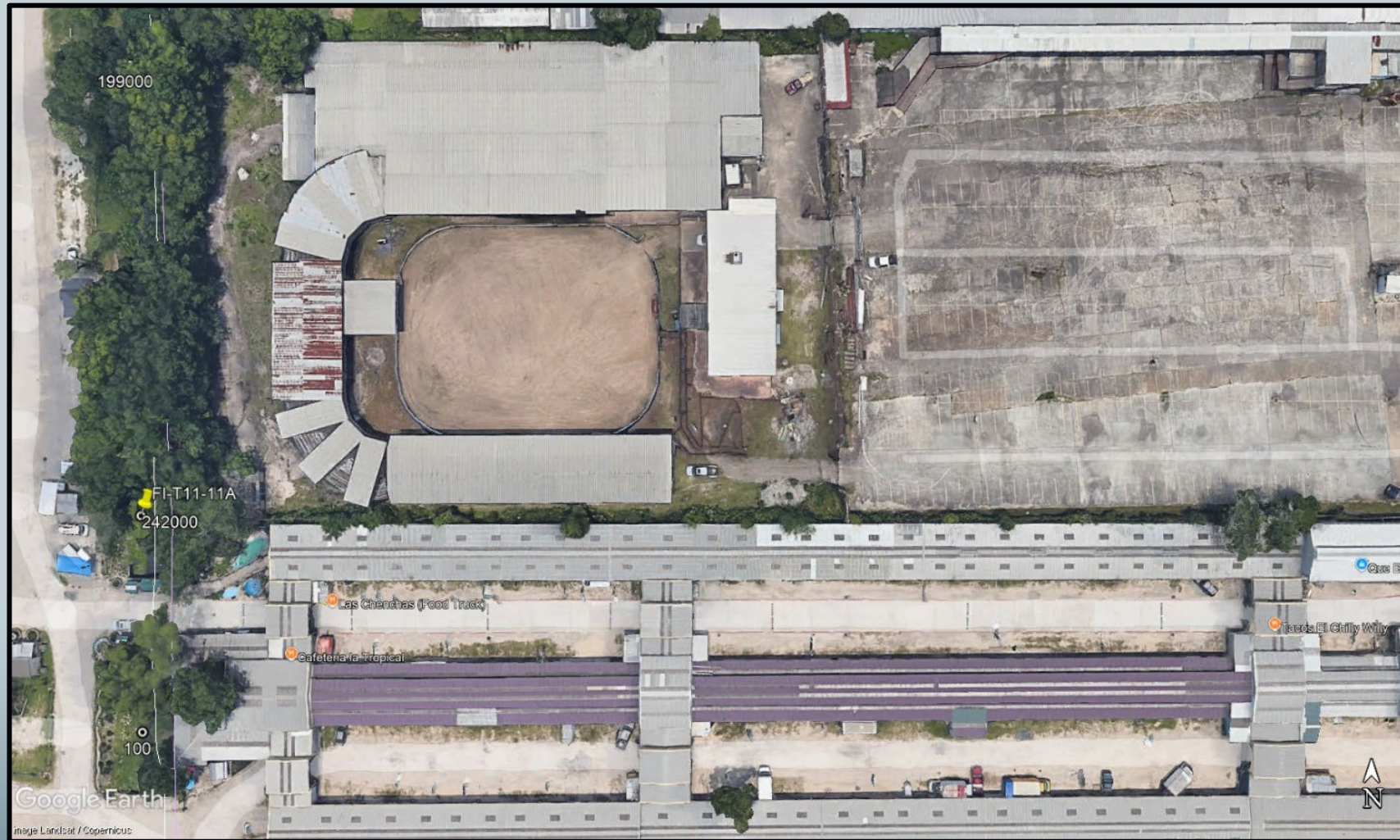
Tributary 11



Referral Site: FI-T11-11A (>242,000 cfu/100 mL)

Latitude: 29.8865

Longitude: -95.3982



Referral #	Tributary #	E. coli sample result
1	11	>242,000
2	11	>242,000
3	2	>242,000
4	2	57,900
5	2	24,800
6	2	16,200
7	2	>242,000
8	2	>242,000
9	2	>242,000
10	7	5,280
11	7	7,170
12	7	2,110
13	7	>242,000
14	7	36,500
15	7	>242,000
16	7	>242,000
17	9	20,100
18	9	36,100
19	9	21,400



Questions