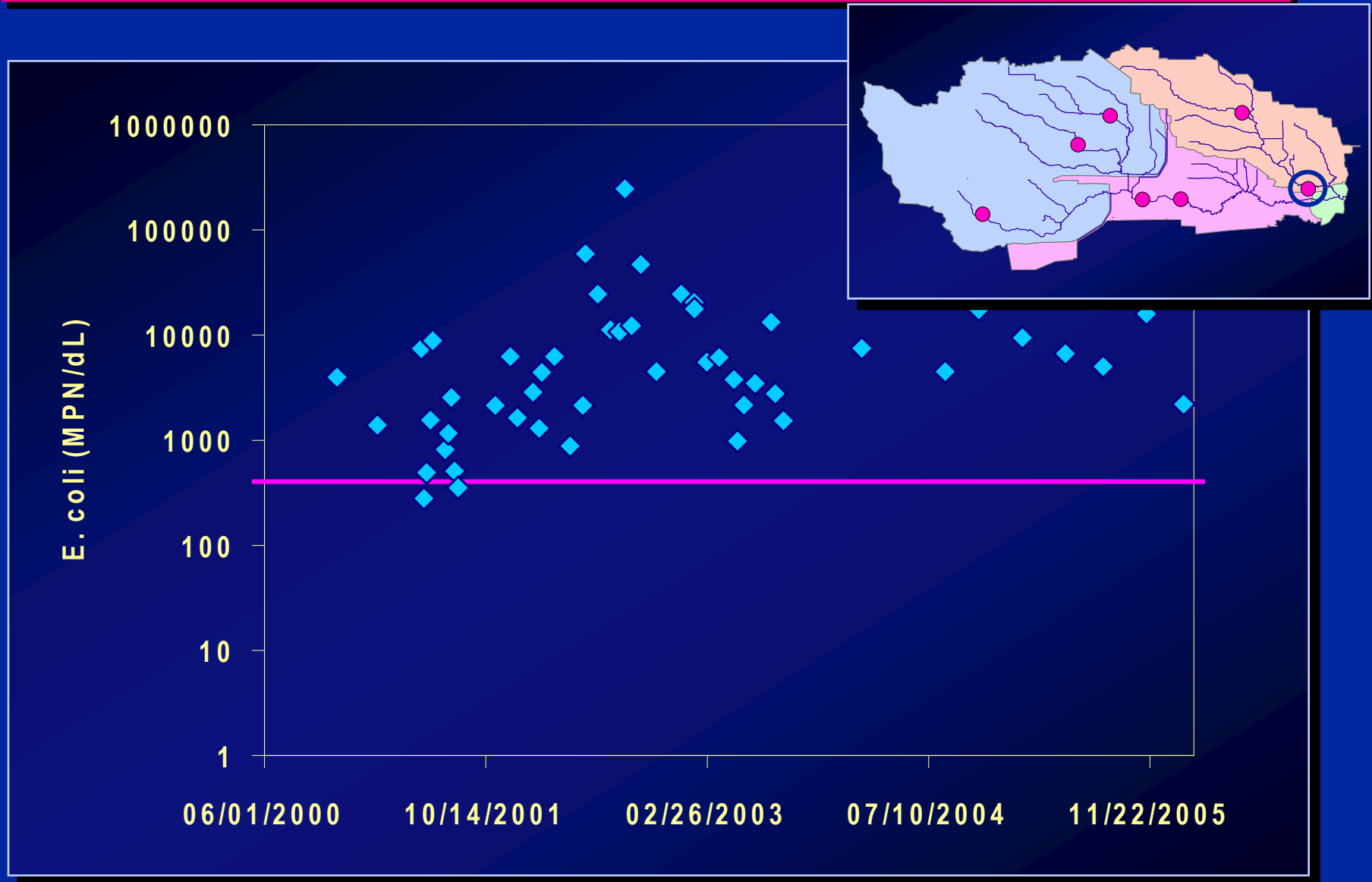


**Total Maximum Daily Load for
Fecal Pathogens in Buffalo and
Whiteoak Bayous**

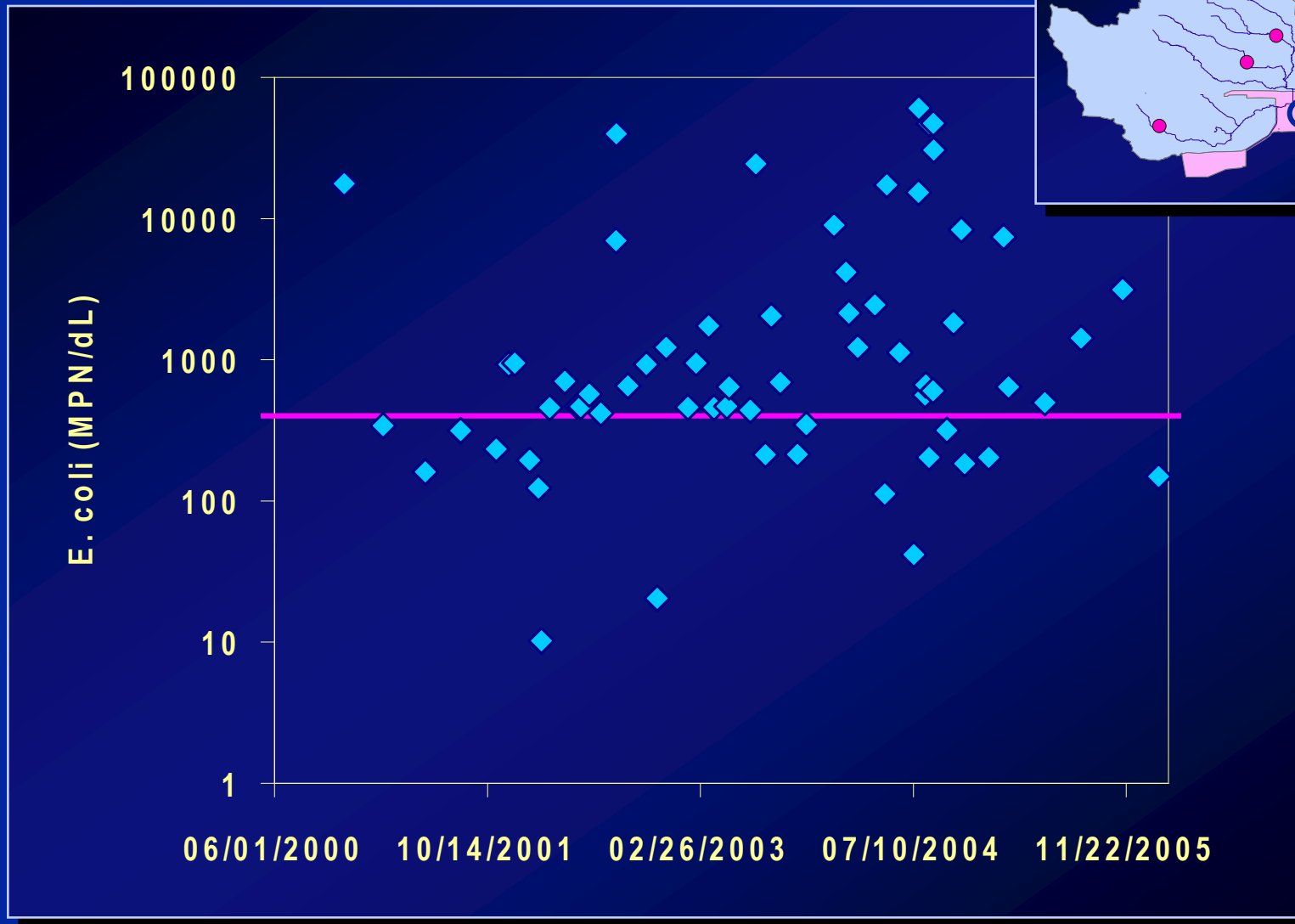
Stakeholder Meeting

February 8, 2007

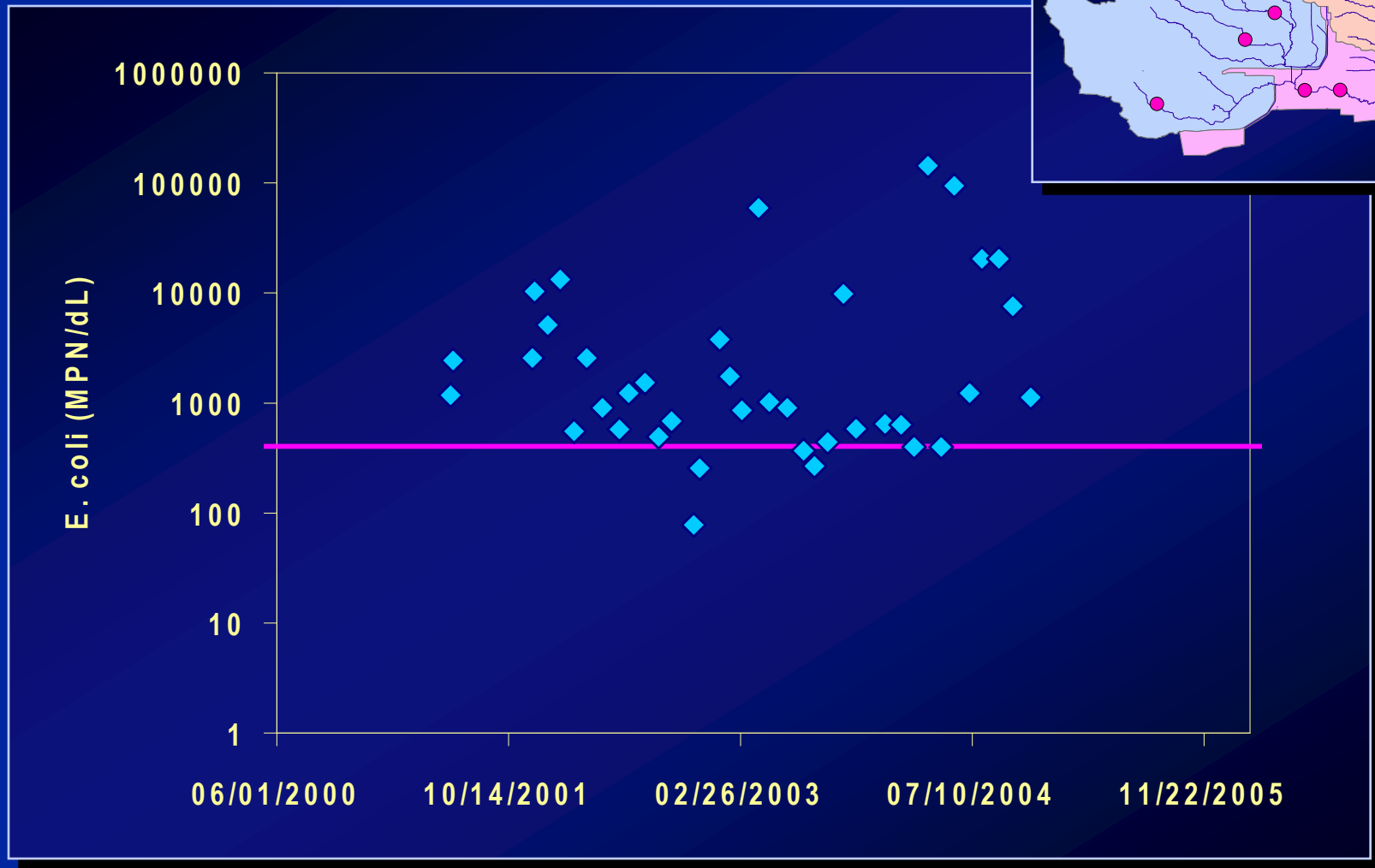
E. coli Concentrations - 11387



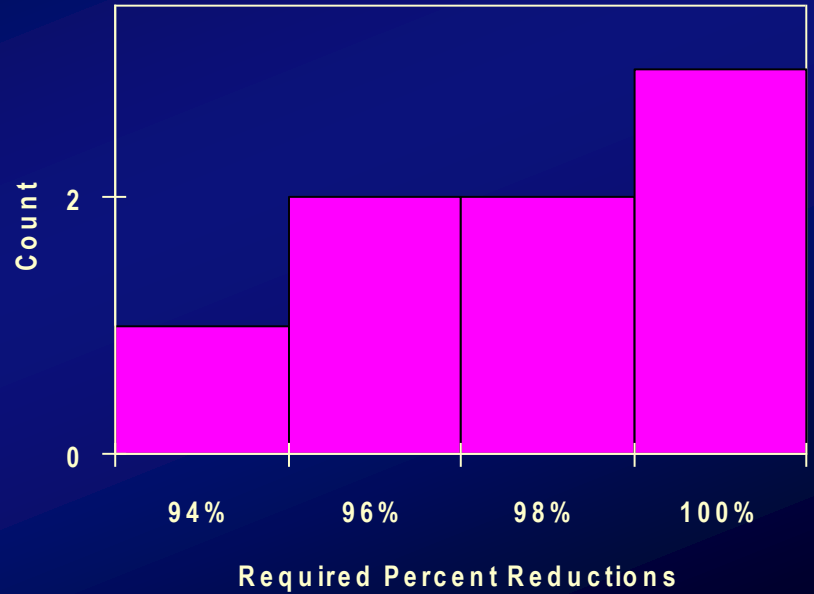
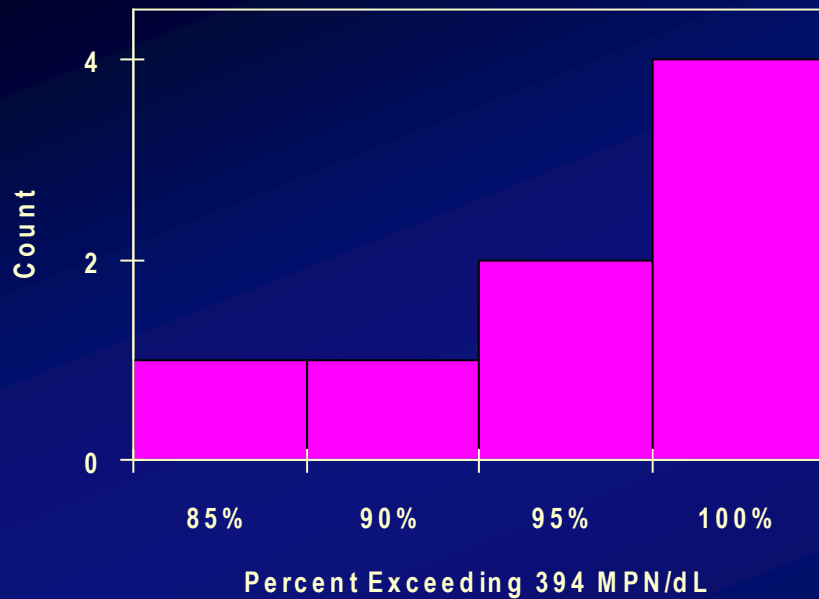
E. coli Concentrations - 11362



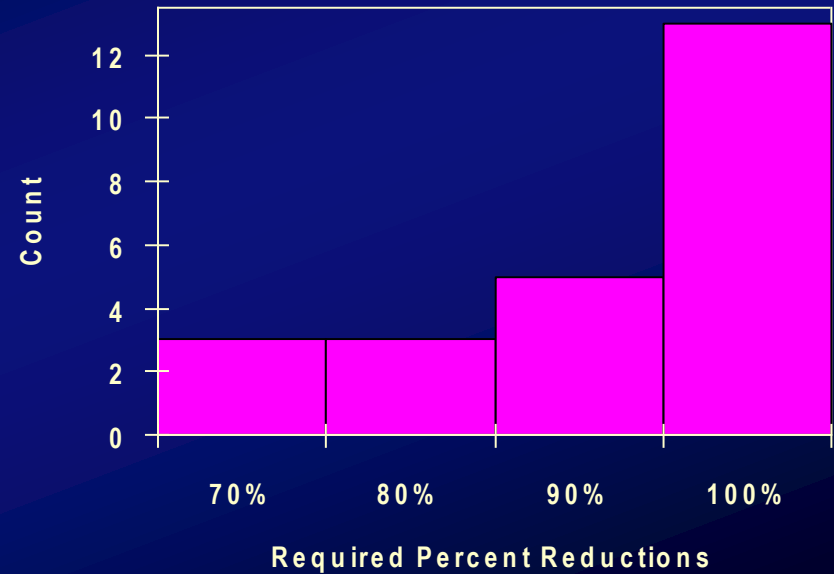
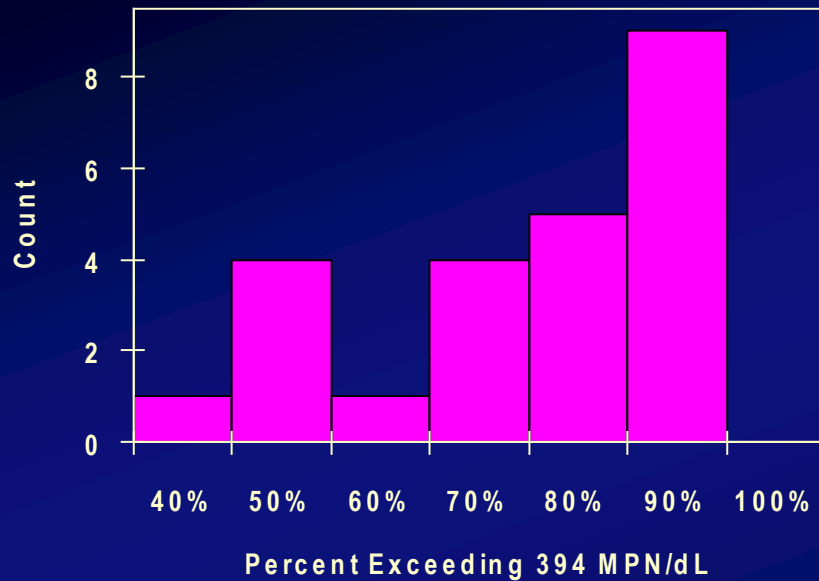
E. coli Concentrations - 11351



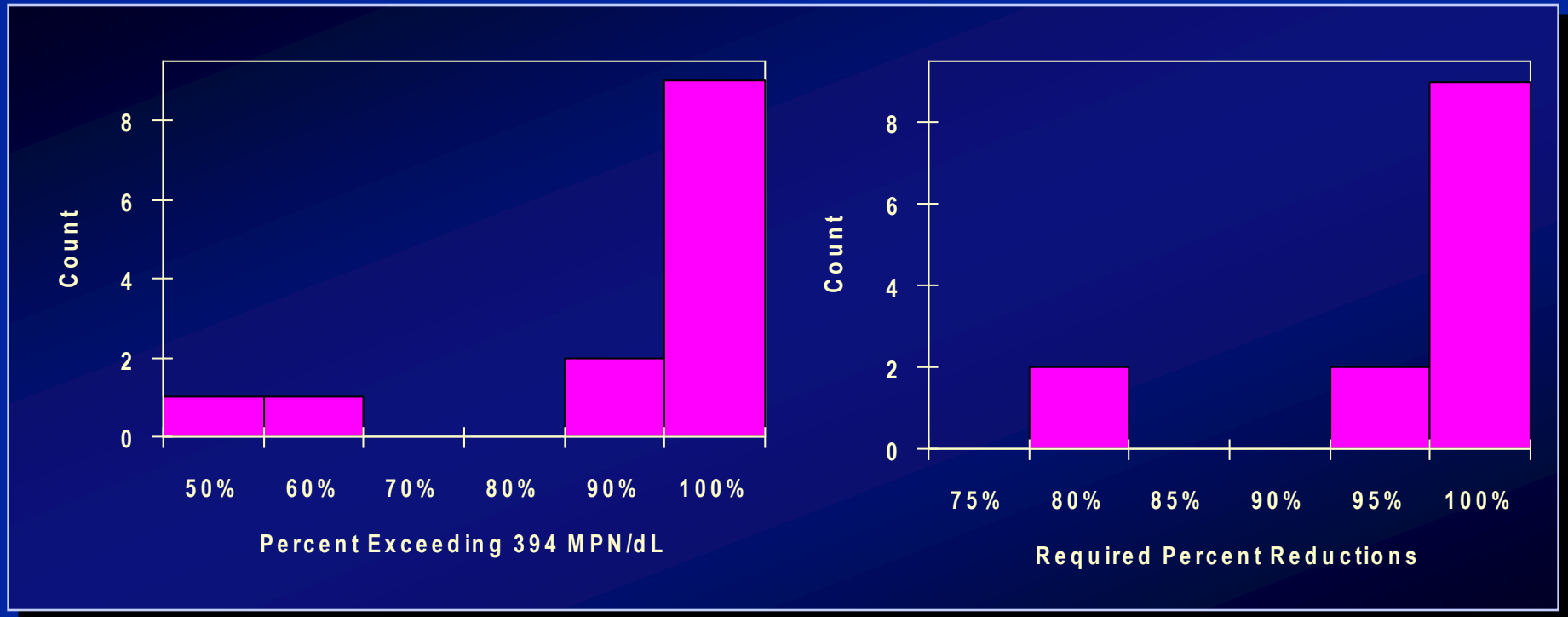
Segment 1013- Exceedances and Percent Reductions



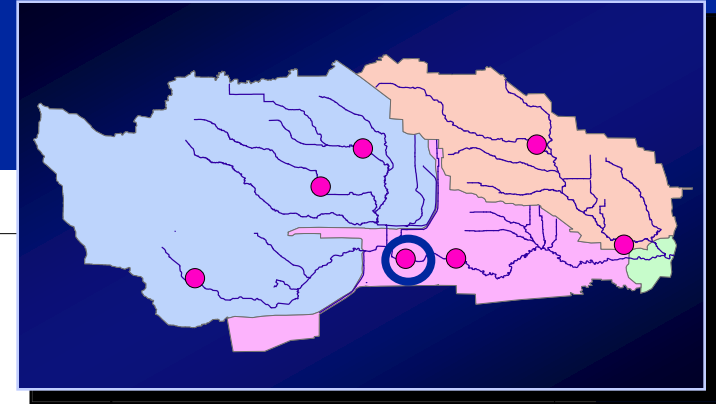
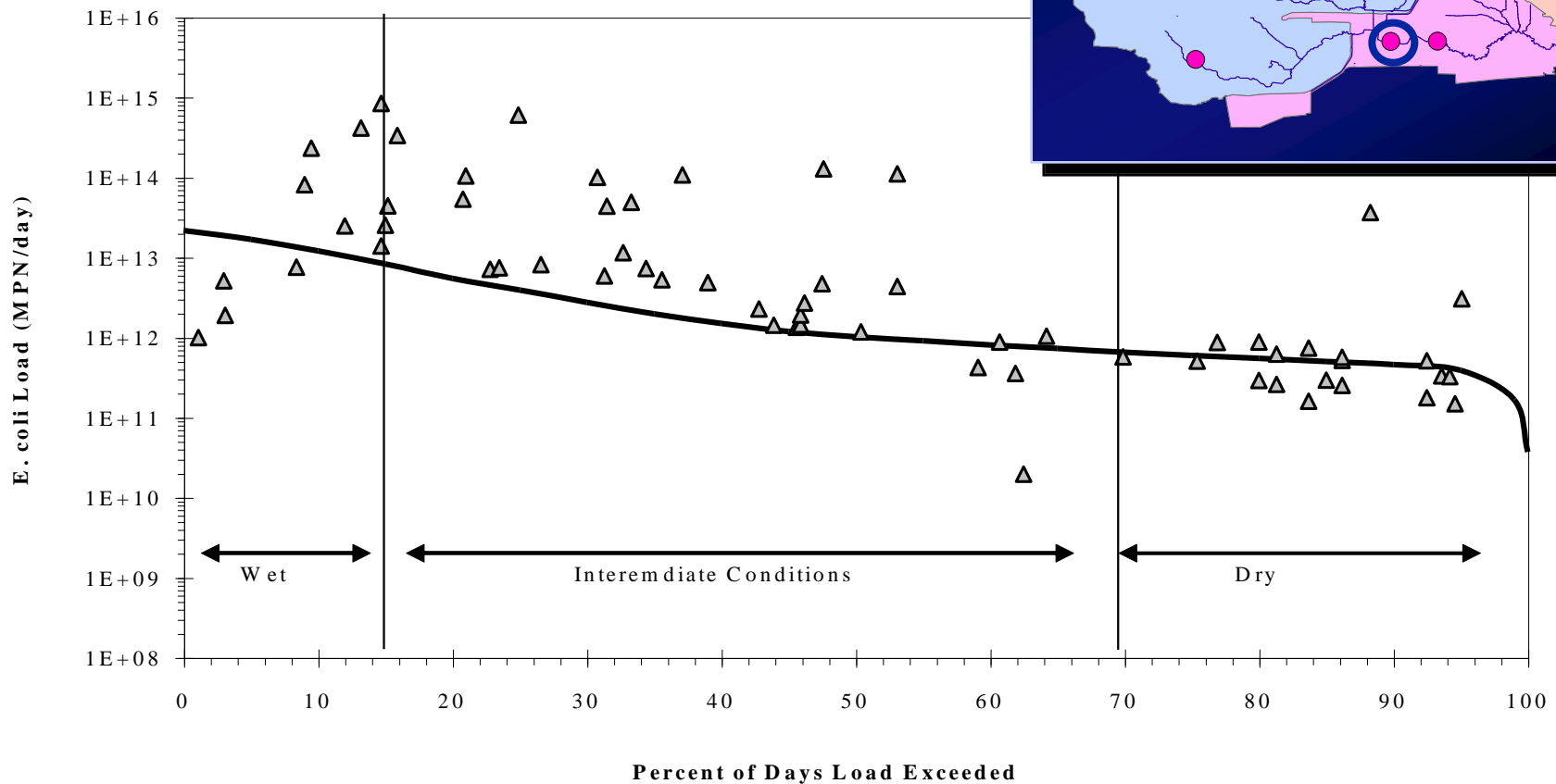
Segment 1014- Exceedances and Percent Reductions



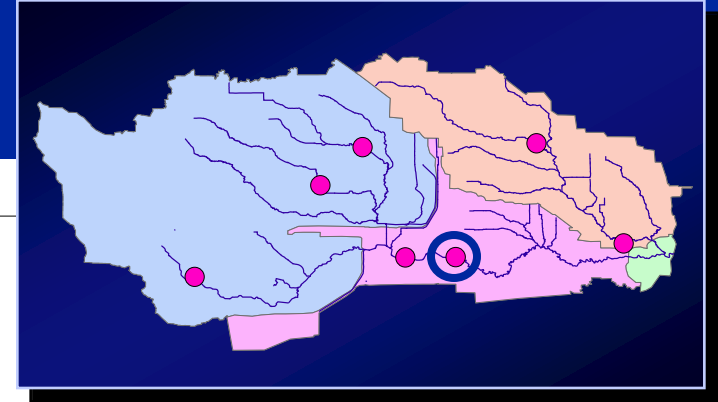
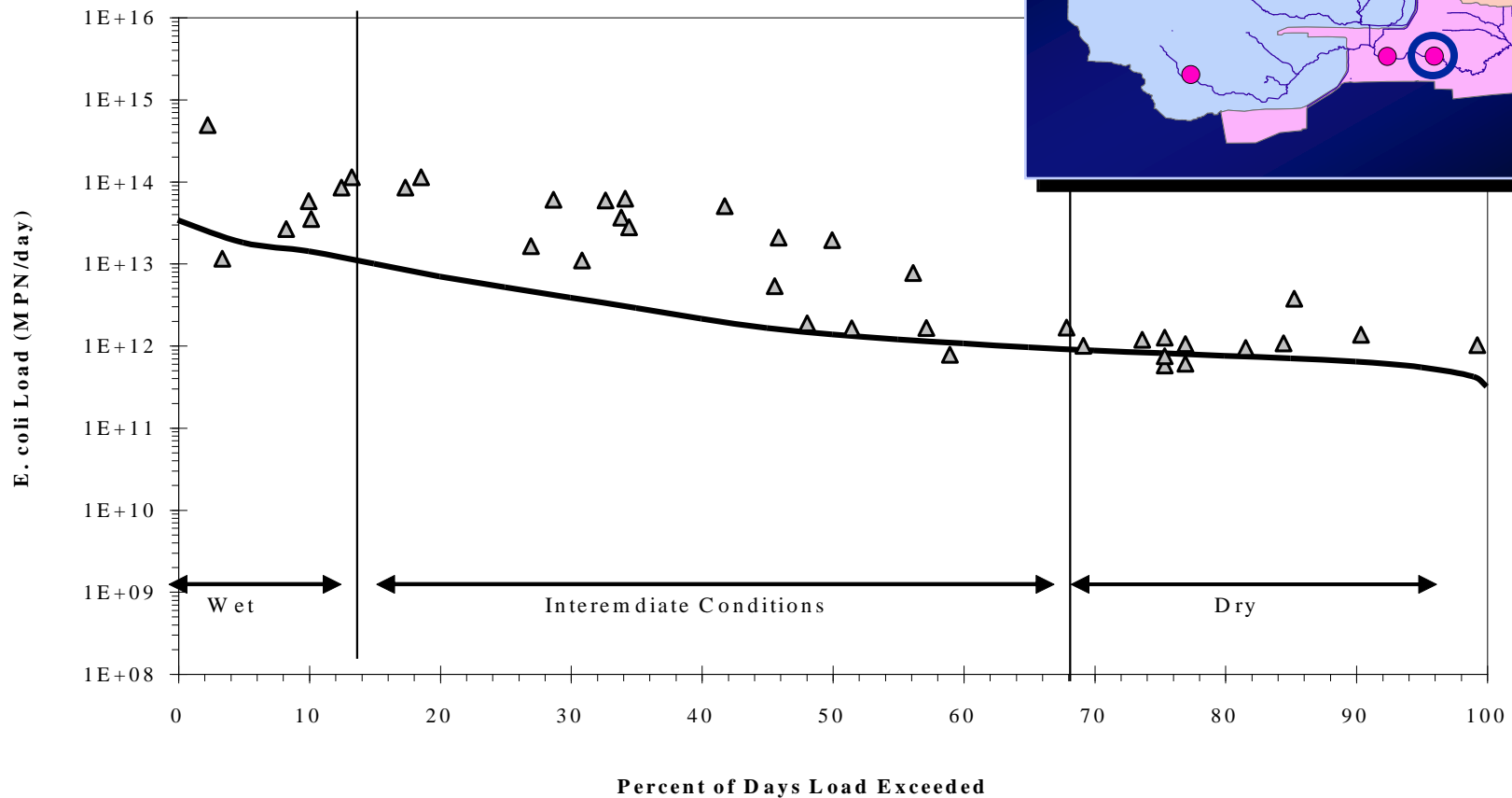
Segment 1017- Exceedances and Percent Reductions



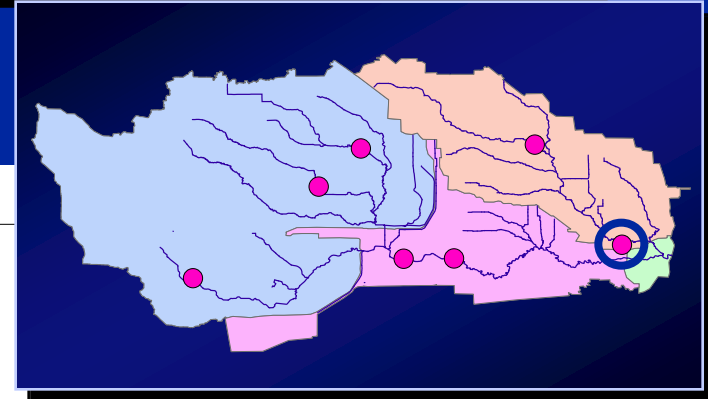
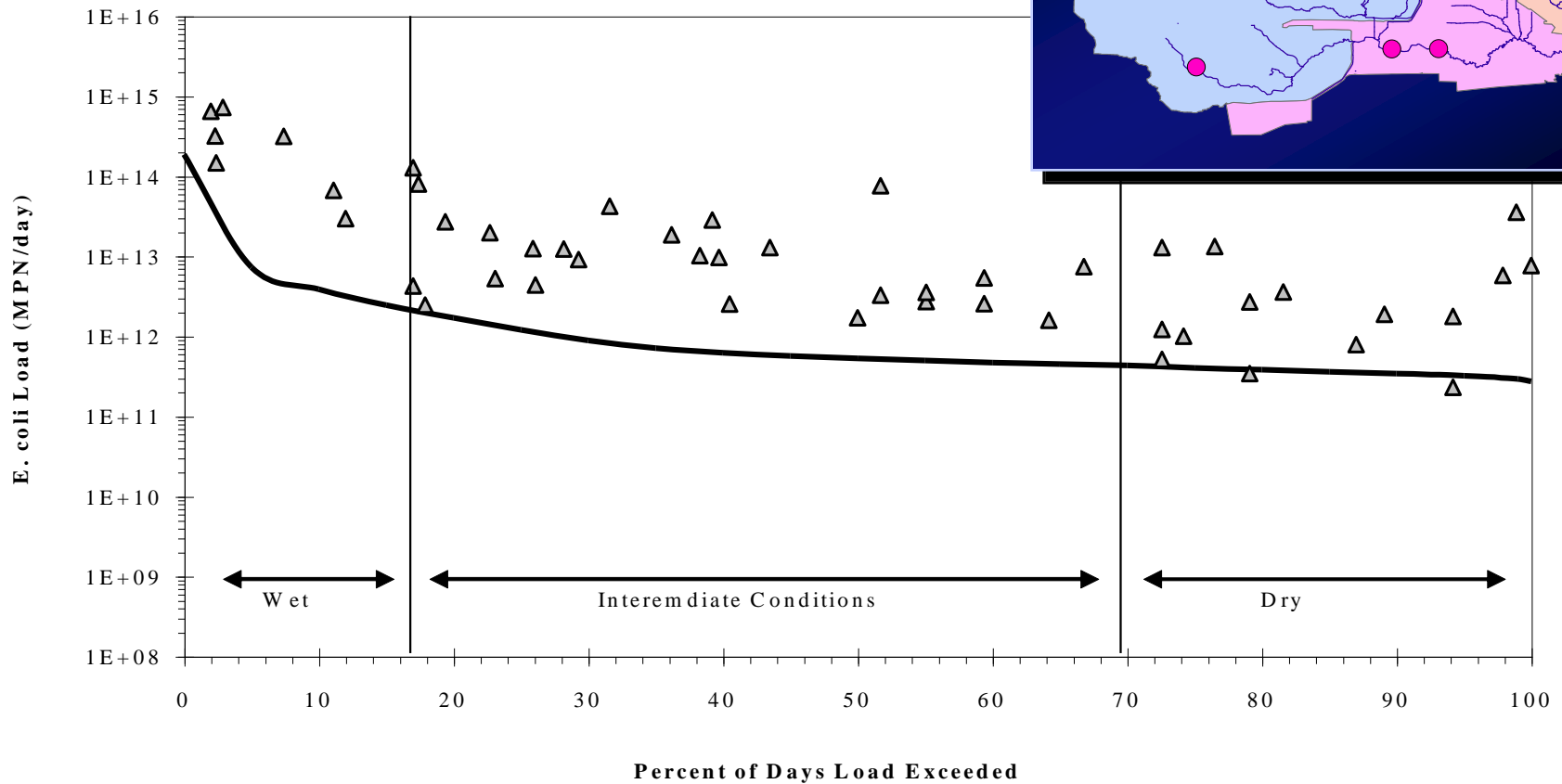
Load Duration Curves - 11362



Load Duration Curves - 11360

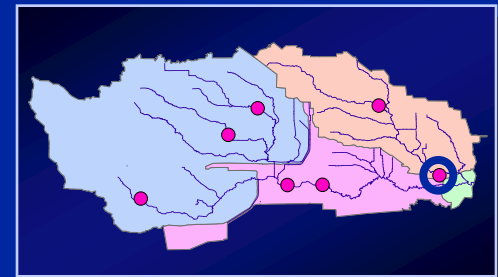


Load Duration Curves - 11387



Comparison of LDC and BLEST at 11387

Percentile Range	Load Duration Curve			BLEST		
	Low	Interm.	High	Low	Interm.	High
Observed	2.2E+12	9.0E+12	1.4E+14	3.5E+12	2.3E+13	5.8E+14
TMDL	8.6E+10	8.6E+10	8.6E+10	9.8E+10	1.6E+11	1.8E+12
Overall % Reduction	88%	98%	100%	97%	99%	100%



Overall Percent Reductions

Segment End	Load Duration Curve			BLEST		
	Low	Interm.	High	Low	Interm.	High
1013	nc	nc	nc	29%	96%	98%
1014	nc	nc	nc	79%	79%	99%
1017	88%	98%	100%	97%	99%	100%

nc – could not calculate because of lack of data and upstream control from reservoirs

Comparison of WO5 HSPF Wet Weather Reductions to BLEST

Model	End of Segment		
	1014	1013	1017
BLEST	99%	98%	100%
Median HSPF Reductions	95%		99%