

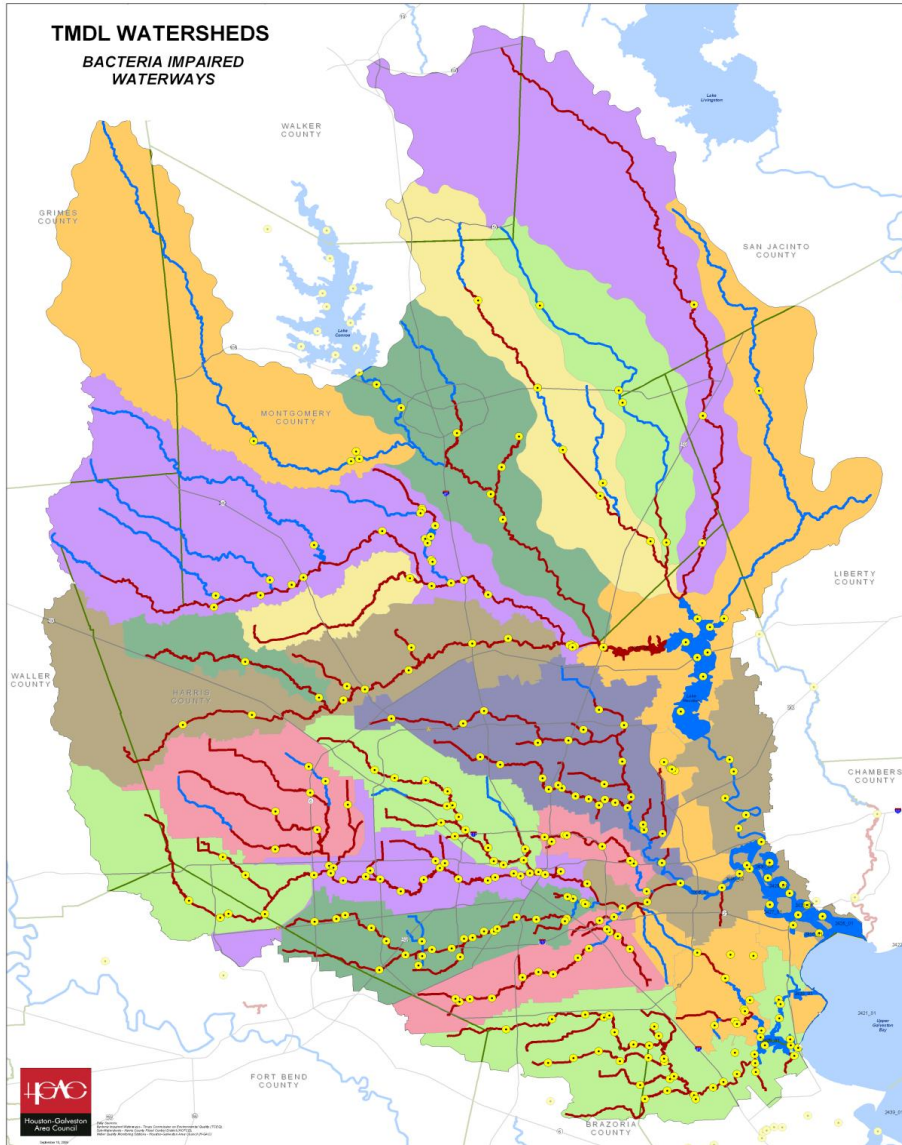


BIG ANNUAL MEETING



Steven Johnston, Houston-Galveston Area Council
5/27/14





Agenda

1. Call to Order/Introductions
2. Review 10/15/13 Meeting
3. Public Comment
4. Review Annual Report
5. TCEQ TMDL Update
6. Morning Presentations
7. Lunch and Posters
8. Afternoon Presentations
9. BIG Routine Business
10. Next Meeting – October 21, 2014
11. Adjourn

2014 ANNUAL REPORT



- What is Inside –
 - ❖ Executive Summary
 - ❖ Spotlight on Success
 - ❖ Progress Report
 - ❖ Appendices
- What is New –
 - ❖ Report Period – January 2013 – December 2013
 - ❖ Overall Document Format was revised
 - ❖ Indicator of Progress revised
 - ❖ Strategy sections streamlined
- What You will Find –
 - ❖ Accomplishments
 - ❖ Simplified Qualitative Scorecard
 - ❖ Strategy and Activity Score
 - ❖ Focus 2014
 - ❖ Individual Activity Accomplishments and Interim Milestone Assessment

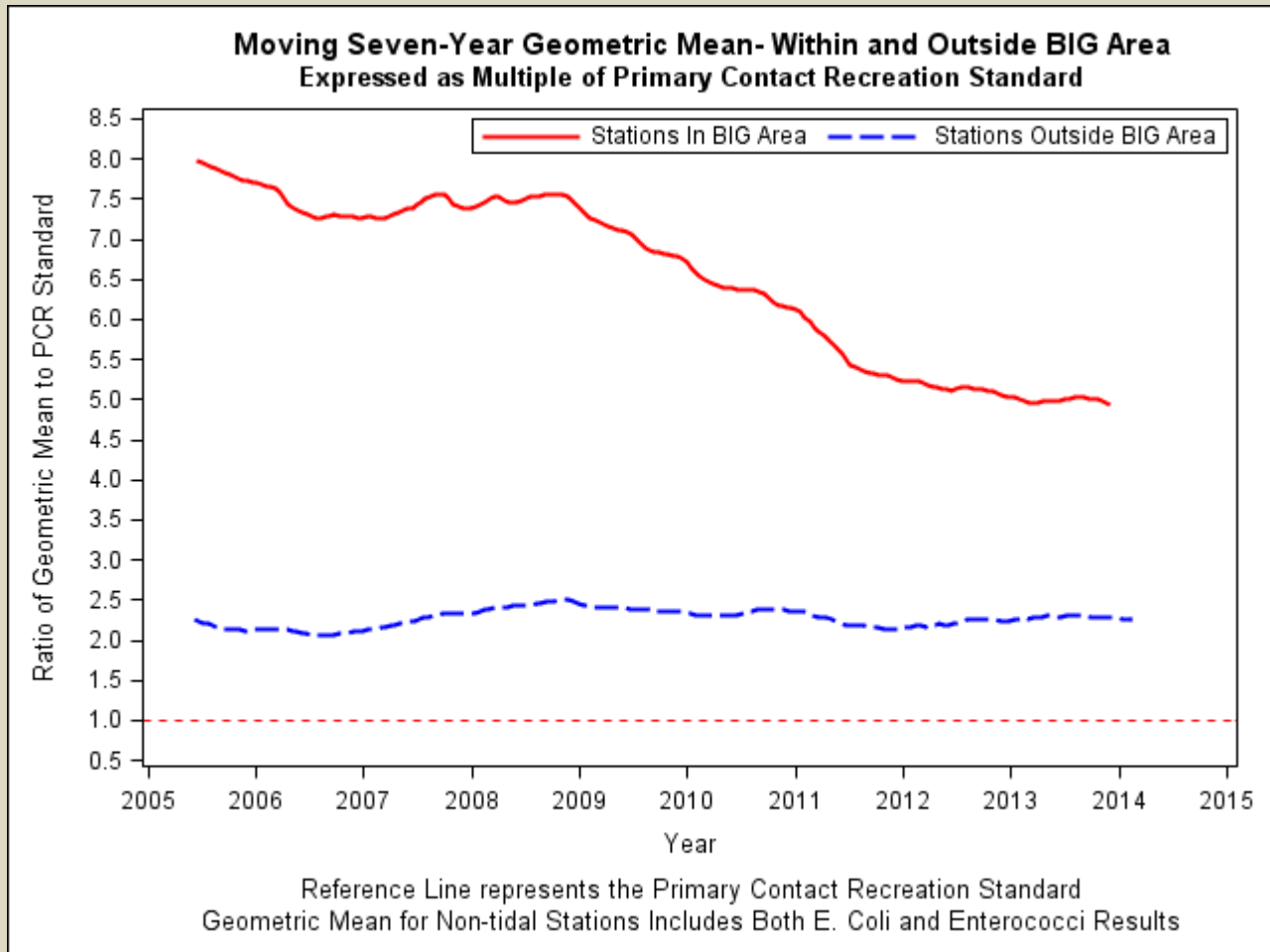
ACKNOWLEDGEMENTS

- BIG Partners in Attendance
- BIG Partner Organizations at Workgroup Meetings.
- H-GAC Staff



ANNUAL REPORT HIGHLIGHTS


- Continued Improvement -



- Progress Indicators:
 - ❖ Not Started (0)
 - ❖ Some Progress (1)
 - ❖ Moderate Progress (2)
 - ❖ Significant Progress (3)
 - ❖ Complete (4)

DRAFT

Overview of Progress

 After totaling the scores for each implementation strategy and sub-strategy, the BIG project collectively earned the status of "Moderate Progress." Most activities are underway and progress has been made toward meeting most milestones.

Progress

Progress of the 11 Implementation Strategies

- | | |
|--|---|
| 
<i>Some Progress</i> | – 1. Wastewater Treatment Facilities. Increase monitoring requirements, impose stricter bacteria limits, increase enforcement, and require updates to facilities not able to comply with limits. |
| 
<i>Moderate Progress</i> | – 2. Sanitary Sewer Systems. Require all systems to develop and implement utility asset management programs and to protect against power outages at lift stations. |
| 
<i>Progress</i> | – 3. On-Site Sewage Facilities. Identify failing systems and address inadequate maintenance through owner education and enforcement of regulations. |
| 
<i>Progress</i> | – 4. Stormwater and Land Development. Expand stormwater management programs, develop a recognition program, and petition the TCEQ to facilitate reimbursement of bacteria reduction measures. |
| 
<i>Some Progress</i> | – 5. Construction. Improve compliance and enforcement of existing stormwater management permits. |
| 
<i>Moderate Progress</i> | – 6. Illicit Discharges and Dumping. Increase efforts to address direct and dry-weather discharges, and better control waste hauler activities. |
| 
<i>Moderate Progress</i> | – 7. Agriculture and Animals. Expand existing cost-share programs and the management of feral hog populations. |
| 
<i>Moderate Progress</i> | – 8. Residential. Expand public education efforts. |
| 
<i>Significant Progress</i> | – 9. Monitoring and I-Plan Revision. Maintain databases of ambient and non-ambient water quality monitoring data and implementation activities, review I-Plan progress, and update the I-Plan. |
| 
<i>Moderate Progress</i> | – 10. Research. Examine effectiveness of stormwater activities, bacteria persistence and regrowth, and appropriate indicators for use in water quality monitoring. |
| 
<i>Significant Progress</i> | – 11. Geographic Priority Framework. Consider recommended criteria when selecting geographic locations for projects. |

- Addressing “Top Ten List”
- Securing SEP Approval
 - OSSF
- Structural BMPs
 - League City
 - UHCL
 - Harris County and Harris County Flood Control District
- Outreach and Education - Pet Waste



ANNUAL REPORT HIGHLIGHTS



1.0 Waste Water Treatment Facilities:

1. Permits – Addressing Monitoring and Limits
2. Harris County provided compliance data
3. Bacteria Education provided to operators
4. Harris County implemented Plant design set review

2.0 Sanitary Sewer Systems:

1. Stakeholder Participated in TCEQ 217 Permit/Design Processes and Comment Periods
2. Education – Asset management, FOG



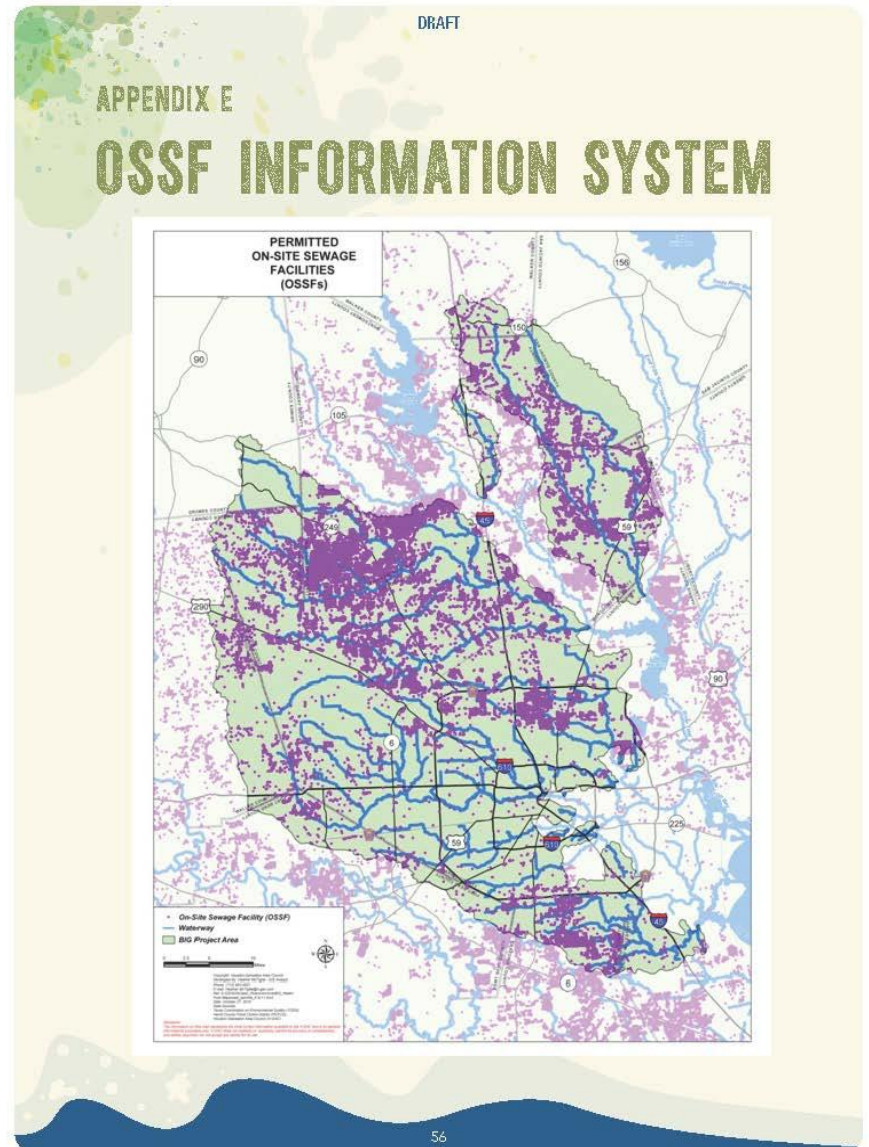
ANNUAL REPORT HIGHLIGHTS

3.0 OSSF:

1. Updated OSSF Locations
2. Establishing Target Areas
3. Education and Training – Homeowners, Real Estate Agents, Waste Professionals

4.0 Stormwater Systems:

1. MS4 Operator Survey – 107 Operators
2. Structural BMP Installation and Monitoring
3. HCFCD BMP Database Launch
4. Education and Training
5. Draft Recognition Program
6. Initial Limited Reimbursement for BMPs



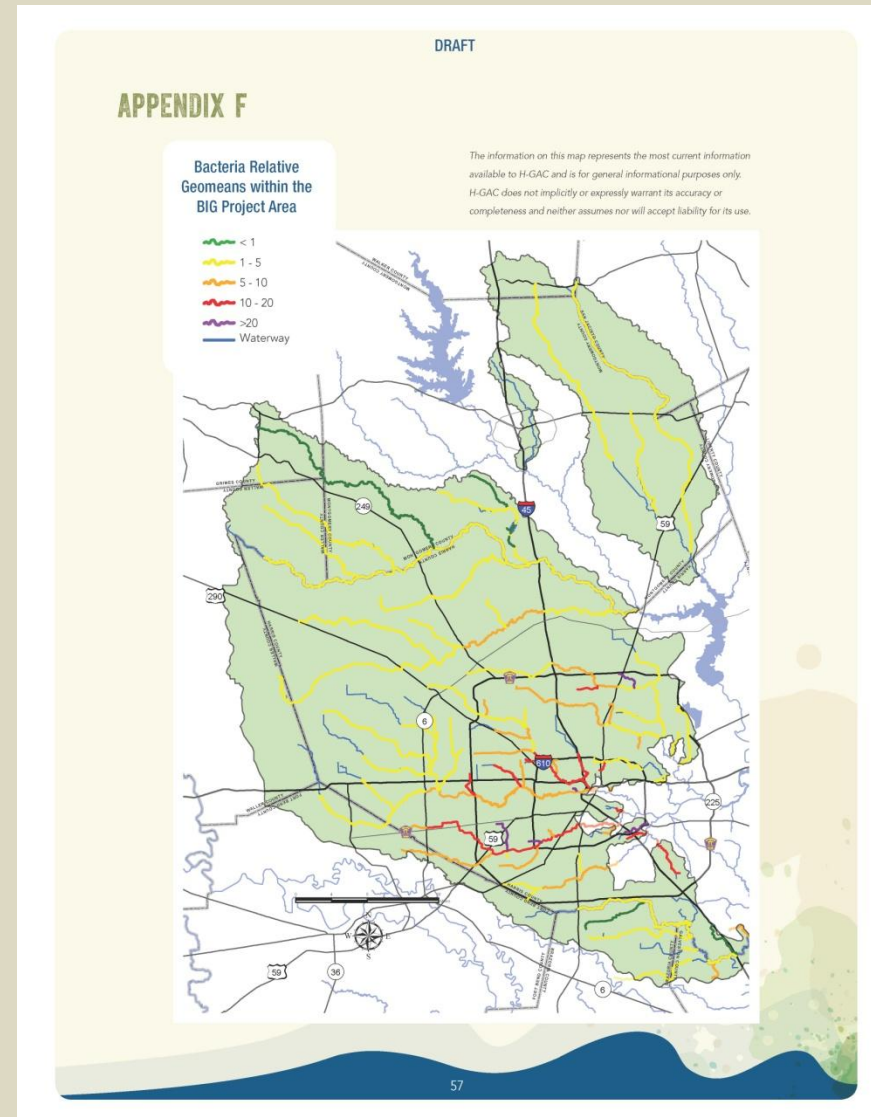
ANNUAL REPORT HIGHLIGHTS

5.0 Construction:

1. Harris County and City of Houston Compliance Reporting
2. Improved Compliance through Training during Inspections
3. Education

6.0 Illicit Discharges and Dumping:

1. Illicit Discharge Implementation – BPA, City of Houston
2. Regulation



ANNUAL REPORT HIGHLIGHTS

7.0 Animals and Agriculture:

1. Outreach and Education
2. Feral Hog Removal – Harris County



8.0 Residential:

1. Pet Waste and FOG Education
2. Training – CWI workshop encourages MS4 Focus on Bacteria Reduction Efforts



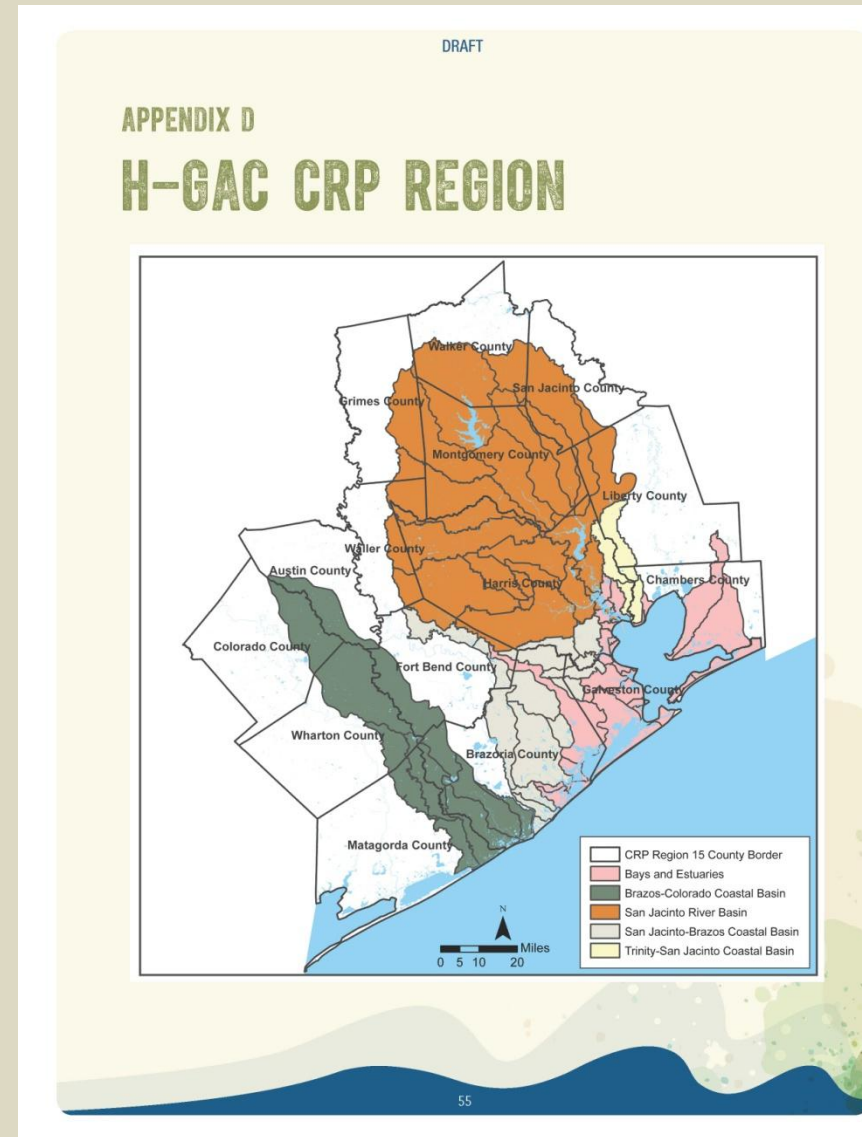
ANNUAL REPORT HIGHLIGHTS

9.0 Monitoring:

1. CRP Continues – Basin Highlights Report
2. Draft QAPP
3. Regional BMP Database
4. BMP Effectiveness Monitoring
5. Annual Report and Assessment

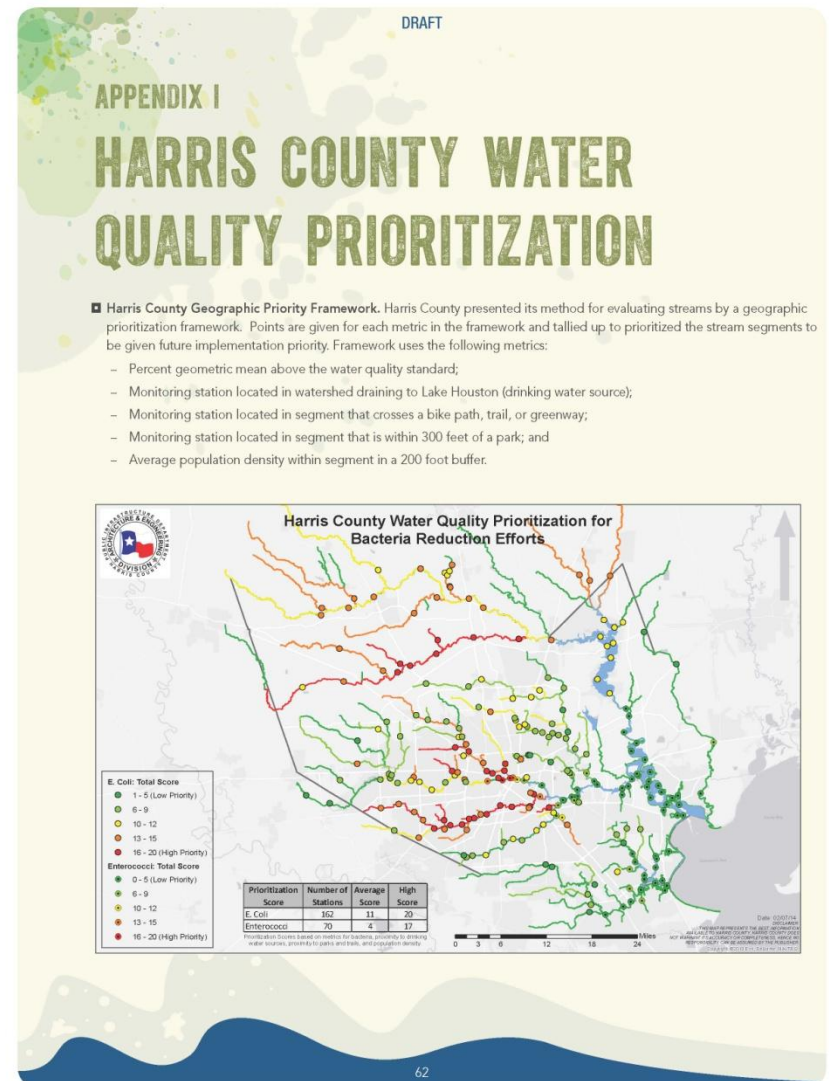
10.0 Research:

1. BMP Effectiveness Monitoring
2. City of Houston Special Studies



11.0 Geographic Focus:

1. Support Geographic Implementation Focus – BPA and City of Houston
2. Updated “Most Wanted” and “Most Likely to Succeed
3. Harris County’s Draft Water Quality Prioritization

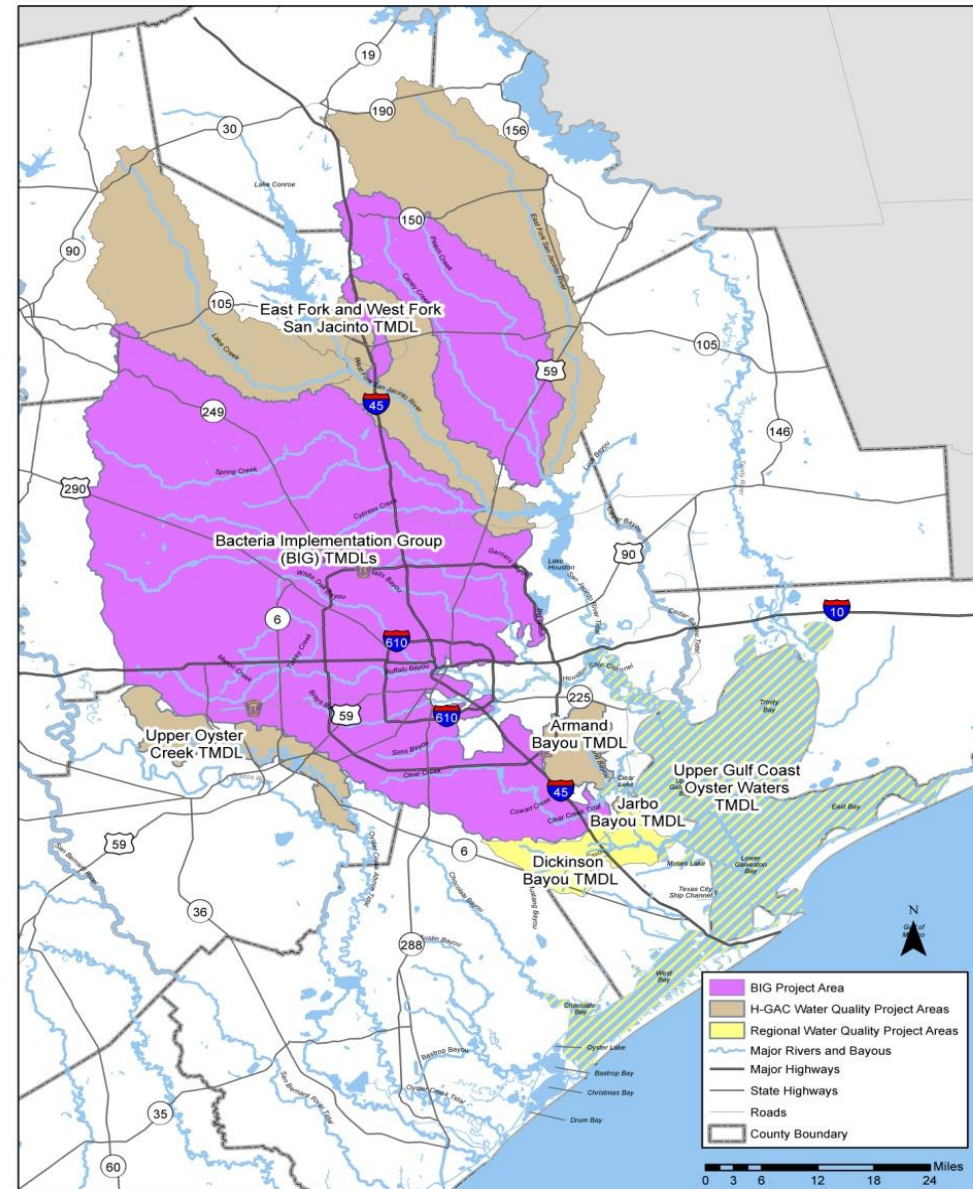


2014 FOCUS

- Collect MS4 Permits – Due June 2014
- Survey WWTF Operators
- Survey MS4 Operators
- On-line Implementation Database
- TCEQ Compliance Database – WWTF, SSS
- Bring additional partners to the table
- Finalize Non Ambient Monitoring QAPP
- Develop Report on BMP Effectiveness Monitoring
- Track Results - City of Houston Bacteria Research
- Continue Geographic Implementation

Observations and Opportunities

- Regional Basin Focus – Upper, Middle, Lower
- Move BIG Fall meeting to tie in with Regional Basin approach
- Workgroups meet in Fall; Watershed Workgroup to rotate.
- Prioritize Implementation
- Project Funding List





TCEQ TMDL Update



“Putting Wetlands to Work in the
Lower Galveston Bay Watershed”
Mary C. Edwards, TCWP



Water Quality Issues in Walker County

Andrew Isbell, Walker County



Lunch and Poster Sessions

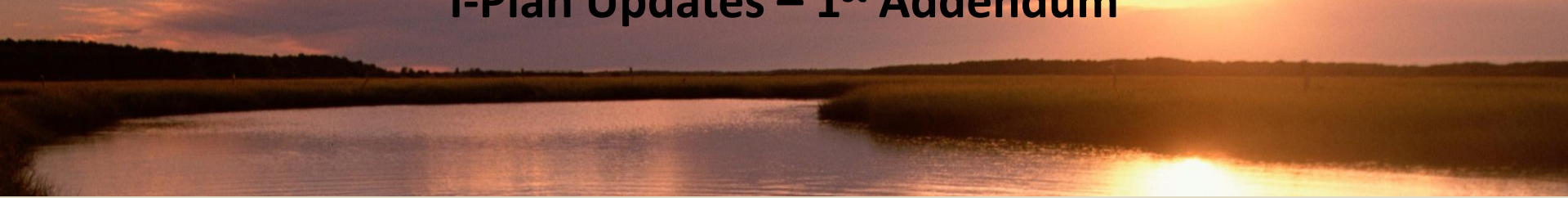


“Harris County LID Projects” Nick Russo, Harris County



“Bacteria Sampling Project”

Kim Laird, TCEQ Region 12



Item 1: Addition of Watershed within BIG Project Area and outside BIG Project Area
I-Pan: 9.4.5, pg. 98

“As other watersheds in the vicinity of the BIG project area have TMDLs adopted by the TCEQ, stakeholders from those watersheds may petition the BIG to consider incorporating those watersheds into the I-Plan. These requests shall be considered by the BIG as part of its annual review of the I-Plan. Communities and stakeholders within the region are encouraged to participate in the I-Plan activities, either informally and voluntarily, or formally upon incorporation by the BIG into the I-Plan. Voluntary action is particularly encouraged in those watersheds with streams that are impaired for bacteria but which do not yet have adopted TMDLs.”

Interest by other watersheds to Join the BIG:

- Armand Bayou – Petition for inclusion
- Potential for East and West Fork San Jacinto and Jarbo Bayou
- Other future

Addendum 1 - Continued

Item 2: 16 TMDLs completed on assessment units within the BIG Project Area

- Brays Bayou (Three TMDLs) - For Segments 1007S, 1007T, and 1007U

Assessment Units 1007S_01, 1007T_01, and 1007U_01

- Buffalo Bayou (One TMDL) - For Segment 1017C

Assessment Unit 1017C_01

- Clear Creek (Four TMDLs) - For Segments 1101A, 1101C, 1101E, and 1102G

Assessment Units 1101A_01, 1101C_01, 1101E_01, and 1102G_01

- Eastern Houston (One TMDL) - For Segment 1007V

Assessment Unit 1007V_01

- Lake Houston (Six TMDLs) - For Segments 1008B, 1008C, 1008E, and 1011

Assessment Units 1008B_01, 1008B_02, 1008C_01, 1008C_02, 1008E_01, and 1011_01

- Sims Bayou (One TMDL) - For Segment 1007A

Assessment Unit 1007A_01



Item 3: Revision to 1A 1.7: “Use of Treated Effluent for Facility Irrigation”

- Type I reclaimed water use--Use of reclaimed water where contact between humans and the reclaimed water is likely.
- Type II reclaimed water use--Use of reclaimed water where contact between humans and the reclaimed water is unlikely.

ARMAND BAYOU WATERSHED



- Armand Bayou TMDL completed
- Armand Bayou stakeholders recommend the watershed join the BIG

BIG GROUND RULES



- Coordination and Policy Met and discussed updating the ground rules.

Other Business/Roundtable

- Opportunity for discussion on other items related to the BIG, BIG implementation and announcements.



ADJOURN!



Steven Johnston

Steven.johnston@h-gac.com

281-681-2579

