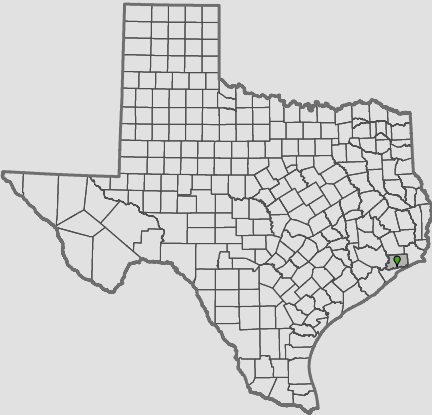


Internet Service with
Speeds of at Least
10 Mbps Download/
1 Mbps Upload

**CHAMBERS
COUNTY
TEXAS**

Household Availability	Unserved Households
99.14%	103



- County Boundary
- Municipal Boundary
- Federal Land
- Local Road
- Water

*Fixed, Terrestrial Non-Mobile
Internet Service*

- Detailed Service Areas
- FCC Service Availability

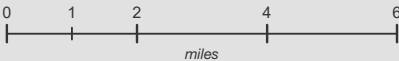


Published December 18, 2020

Broadband data displayed on this map are developed from a combination of direct provider outreach and data collection, FCC Form 477 broadband deployment filings, and independent research conducted by Connected Nation Texas. If a broadband provider was unwilling or unable to supply granular data and a detailed service area could not be developed, the provider's service availability is represented by FCC Form 477 data, a format which tends to be overstated. This map is not a guarantee of internet service availability. Mobile and satellite services may also be available.

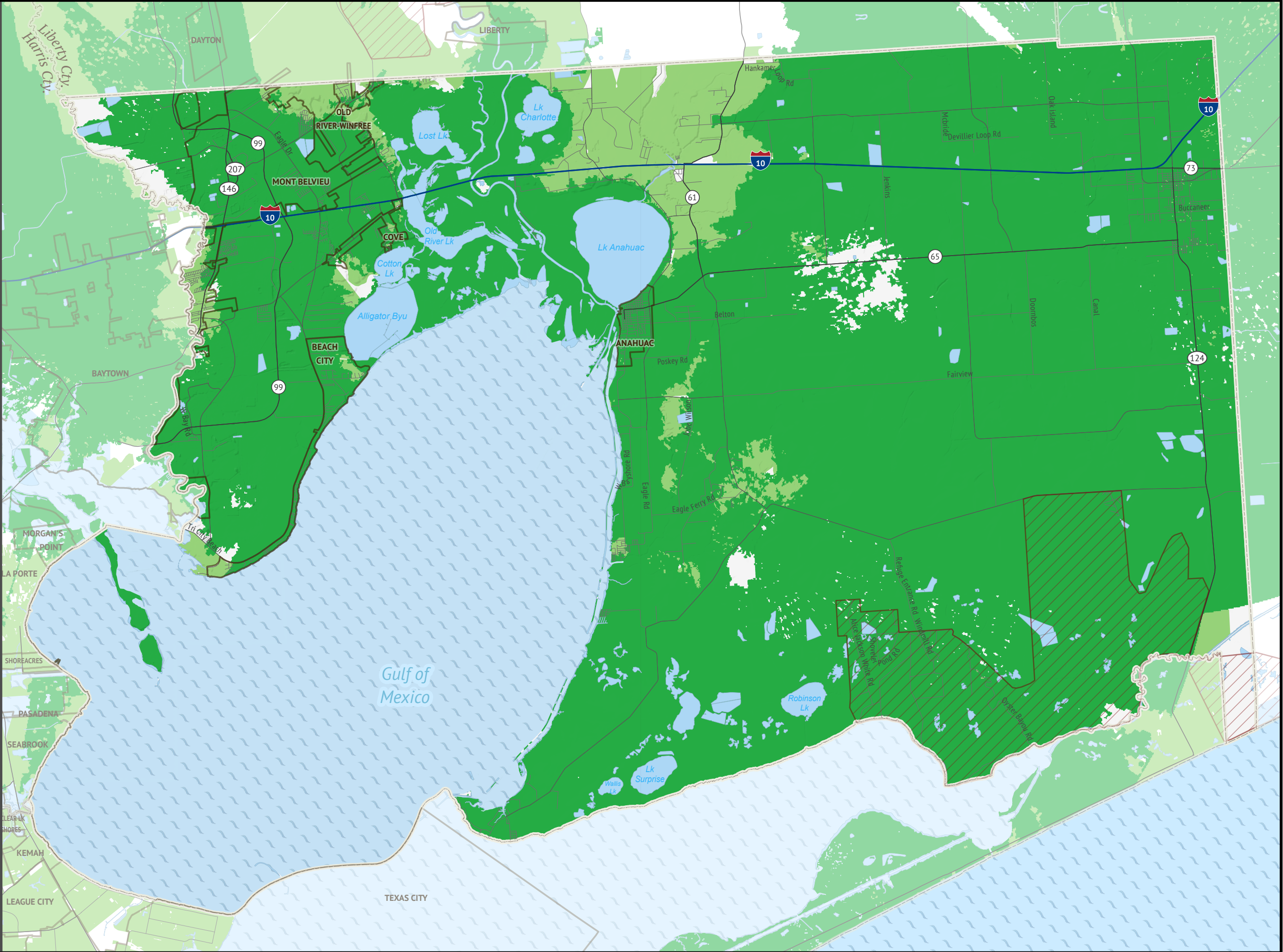
The current FCC definition of broadband is a minimum speed of 25 Mbps (Megabits per second) download and 3 Mbps upload.

Please submit feedback regarding any possible mapping inaccuracies at <https://connectednation.org/texas/feedback>. Updates to this map will occur in July 2021.



Connected Nation Texas is a statewide initiative funded through the Texas Rural Funders to support all Texans in leveraging broadband.

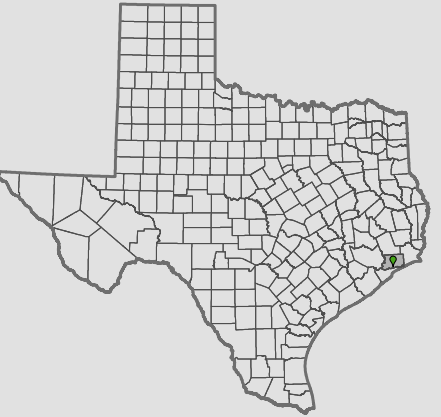
All Rights Reserved. © Copyright 2020, Connected Nation



Broadband Service with
Speeds of at Least
25 Mbps Download/
3 Mbps Upload

**CHAMBERS
COUNTY
TEXAS**

Household Availability	Unserved Households
76.23%	2,841



- County Boundary
- Municipal Boundary
- Federal Land
- Local Road
- Water

*Fixed, Terrestrial Non-Mobile
Broadband Service*

- Detailed Service Areas
- FCC Service Availability



Published December 18, 2020

Broadband data displayed on this map are developed from a combination of direct provider outreach and data collection, FCC Form 477 broadband deployment filings, and independent research conducted by Connected Nation Texas. If a broadband provider was unwilling or unable to supply granular data and a detailed service area could not be developed, the provider's service availability is represented by FCC Form 477 data, a format which tends to be overstated. This map is not a guarantee of internet service availability. Mobile and satellite services may also be available.

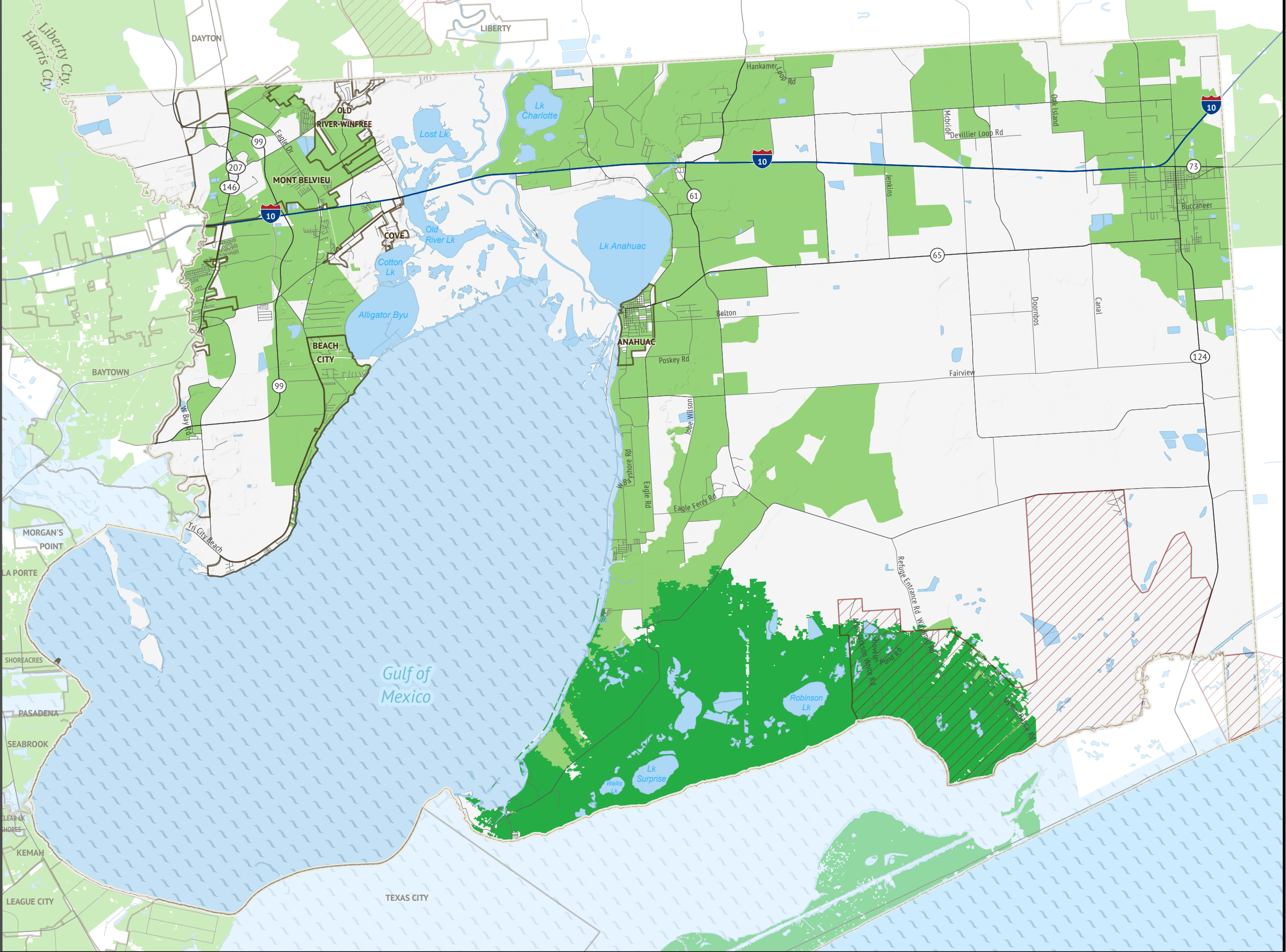
The current FCC definition of broadband is a minimum speed of 25 Mbps (Megabits per second) download and 3 Mbps upload.

Please submit feedback regarding any possible mapping inaccuracies at <https://connectednation.org/texas/feedback>. Updates to this map will occur in July 2021.

0 1 2 4 6
miles

Connected Nation Texas is a statewide initiative funded through the Texas Rural Funders to support all Texans in leveraging broadband.

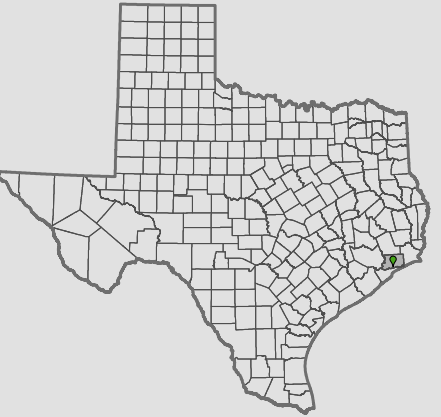
All Rights Reserved. © Copyright 2020, Connected Nation



Broadband Service with
Speeds of at Least
50 Mbps Download/
5 Mbps Upload

**CHAMBERS
COUNTY
TEXAS**

Household Availability	Unserved Households
73.97%	3,111



- County Boundary
- Municipal Boundary
- Federal Land
- Local Road
- Water

*Fixed, Terrestrial Non-Mobile
Broadband Service*

- Detailed Service Areas
- FCC Service Availability



Published December 18, 2020

Broadband data displayed on this map are developed from a combination of direct provider outreach and data collection, FCC Form 477 broadband deployment filings, and independent research conducted by Connected Nation Texas. If a broadband provider was unwilling or unable to supply granular data and a detailed service area could not be developed, the provider's service availability is represented by FCC Form 477 data, a format which tends to be overstated. This map is not a guarantee of internet service availability. Mobile and satellite services may also be available.

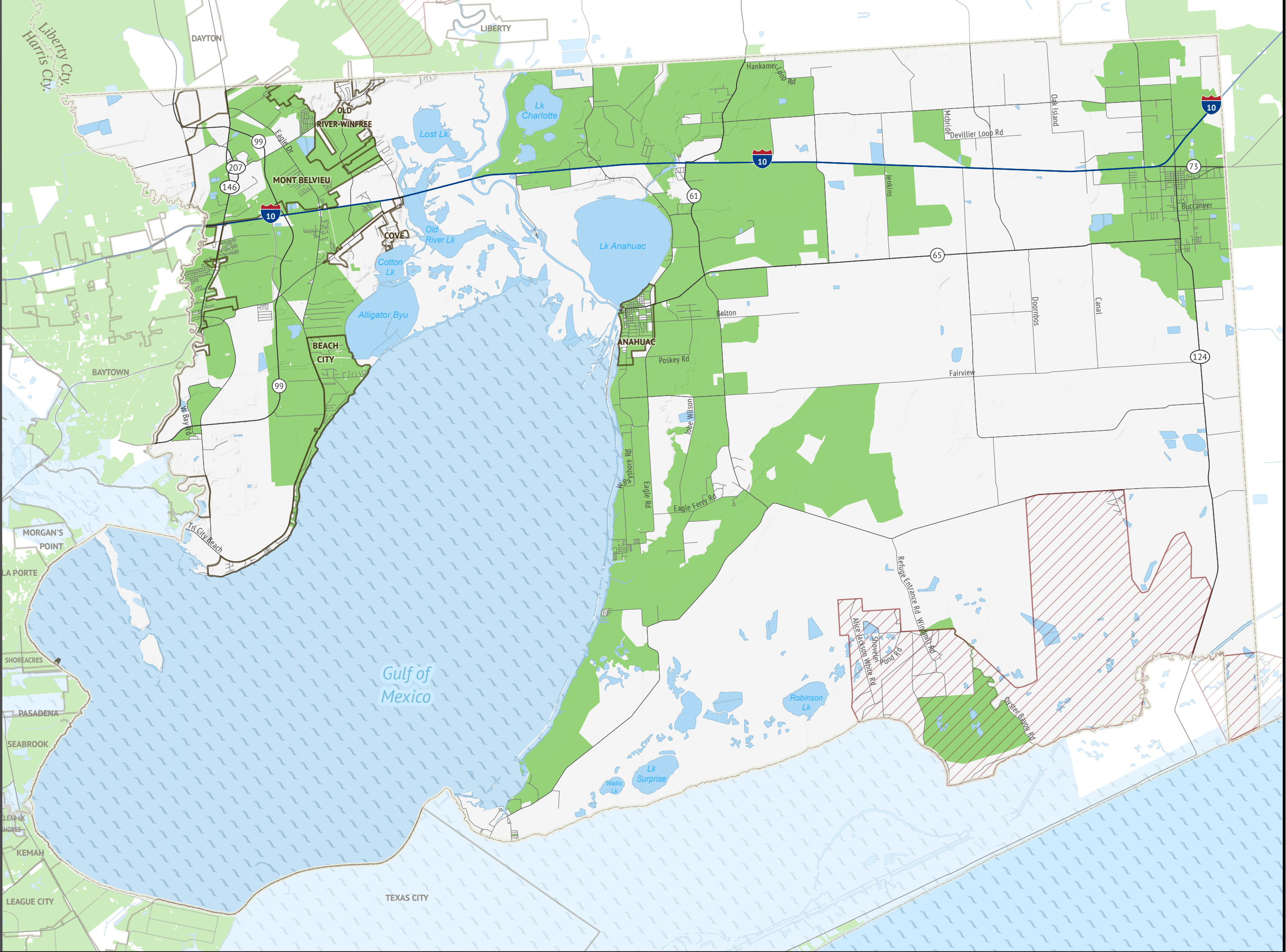
The current FCC definition of broadband is a minimum speed of 25 Mbps (Megabits per second) download and 3 Mbps upload.

Please submit feedback regarding any possible mapping inaccuracies at <https://connectednation.org/texas/feedback>. Updates to this map will occur in July 2021.

0 1 2 4 6
miles

Connected Nation Texas is a statewide initiative funded through the Texas Rural Funders to support all Texans in leveraging broadband.

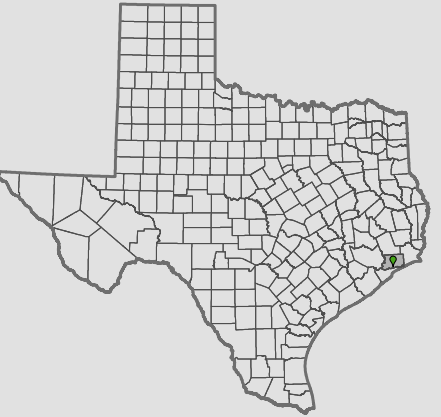
All Rights Reserved. © Copyright 2020, Connected Nation



Broadband Service with
Speeds of at Least
100 Mbps Download/
10 Mbps Upload

**CHAMBERS
COUNTY
TEXAS**

Household Availability	Unserved Households
66.63%	3,989



- County Boundary
- Municipal Boundary
- Federal Land
- Local Road
- Water

*Fixed, Terrestrial Non-Mobile
Broadband Service*

- Detailed Service Areas
- FCC Service Availability

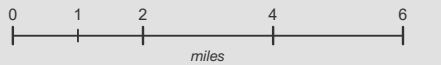


Published December 18, 2020

Broadband data displayed on this map are developed from a combination of direct provider outreach and data collection, FCC Form 477 broadband deployment filings, and independent research conducted by Connected Nation Texas. If a broadband provider was unwilling or unable to supply granular data and a detailed service area could not be developed, the provider's service availability is represented by FCC Form 477 data, a format which tends to be overstated. This map is not a guarantee of internet service availability. Mobile and satellite services may also be available.

The current FCC definition of broadband is a minimum speed of 25 Mbps (Megabits per second) download and 3 Mbps upload.

Please submit feedback regarding any possible mapping inaccuracies at <https://connectednation.org/texas/feedback>. Updates to this map will occur in July 2021.



Connected Nation Texas is a statewide initiative funded through the Texas Rural Funders to support all Texans in leveraging broadband.

All Rights Reserved. © Copyright 2020, Connected Nation

