



Southeast Harris County Subregional Study



Mike Burns, AICP
Mike Feeney, PE
Steering Committee Meeting 1 – 11/04/2020

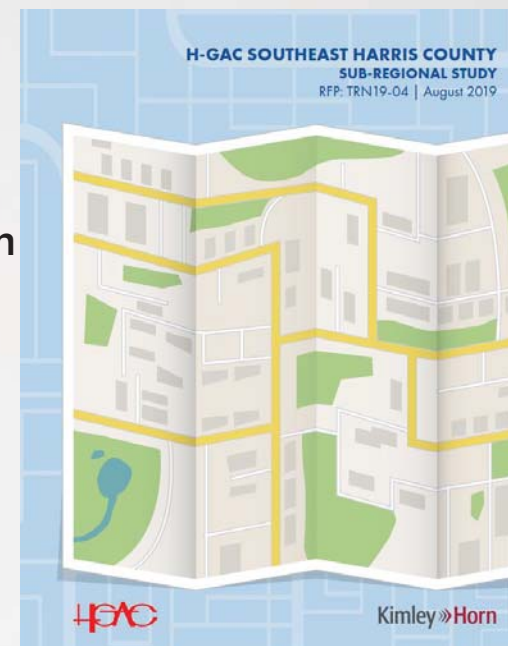
Regional Collaboration • Transportation Planning • Multimodal Mobility



Steering Committee - Meeting 1 Agenda

■ Agenda:

1. Introductions – 15 minutes
 - Project History
 - Steering Committee
 - Project Team – HGAC Staff and Consultant Team
2. Project Overview – 5 minutes
 - Study Area
 - Schedule
3. Vision and Goals – DRAFT – 20 minutes
4. Public Involvement Plan – 10 minutes
5. Existing Conditions – 15 minutes
6. Network Screening – 15 minutes
7. Steering Committee Comments – 35 minutes
8. Next Steps – 5 minutes



Introductions – Steering Committee



SE Harris Subregional Study - Steering Committee

Representing	Name	Title
Port Houston	Bruce Mann	Director, Freight Mobility
Harris County	Bryan Brown	Senior Planner - Engineering Dept
Economic Alliance Houston Port Region	Chad Burke	President and CEO
City of Houston Public Works	Donald Buaku	Principal Planner
TXDOT	Jeffrey English	TxDOT
Gulf Coast Rail District	Katherine Parker	Executive Director
Harris County Transit	Ken Fickes	Director - Transit Services
Harris County Precinct 2	Milton Rahman	Director of Engineering
La Porte Police Dept	Sgt Bennie Boles	Police Sergeant
La Porte	Teresa Vazquez-Evans	Planning & Development Director
City of South Houston	Arthur Olivera	Street and Bridge
Deer Park	Adam Ballesteros	City Engineer
Pasadena	Sarah Benavides	Senior Assistant Director, Public Works
Harris County	Loyd Smith	ALTERNATE - Harris County
City of Houston Planning	Melissa Beeler	ALTERNATE - City of Houston

Introductions – HGAC Staff



■ Regional Planning

- Mike Burns, AICP – Project Manager
- Allie Isbell, AICP – Regional Planning Manager
- Justin Kuzila – Project Planner

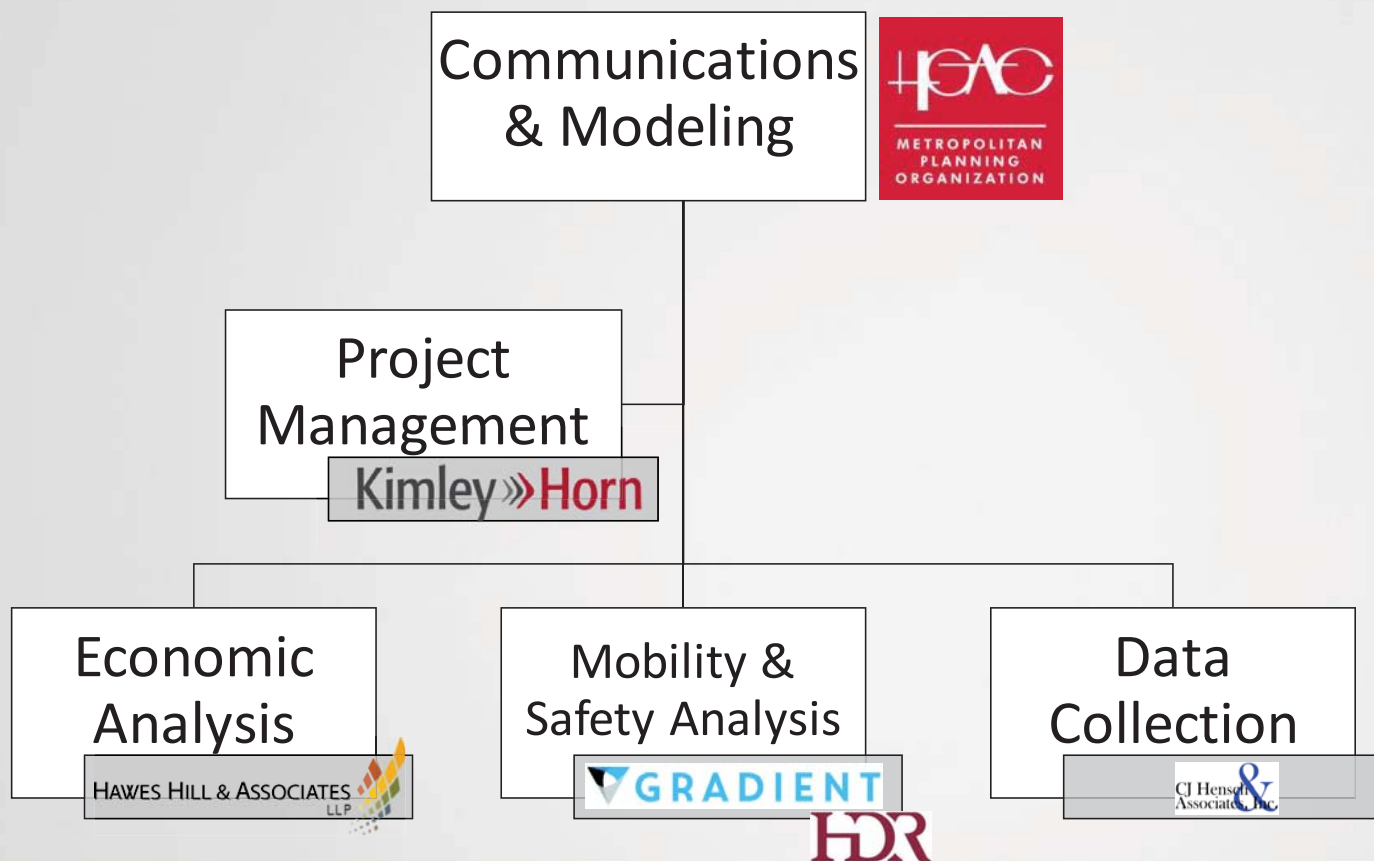
■ Communications

- Francis Rodriguez, Outreach Coordinator
- Megan Coughlin, Keith Garber, Kristina Michel, Lauren Preston, Ashley Seals, Crystal Thomas

■ Modeling / GIS

- Eric Boulet
- Chris van Slyke , Megan Kennison, Houg Cao, David Gao

Introductions – Consultant Team



Introductions – Consultant Team



Kimley»Horn

GRADIENT

HDR

HAWES HILL & ASSOCIATES
LLP

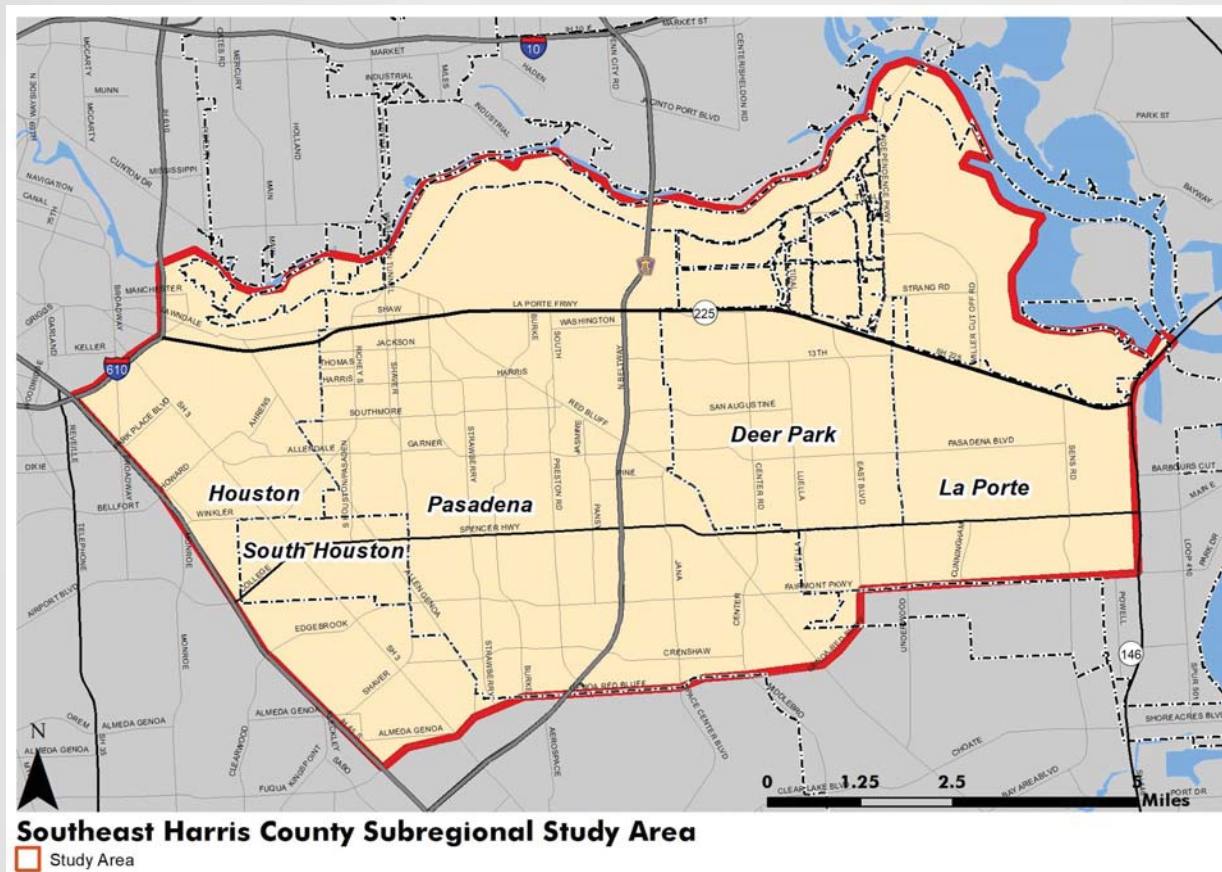
CJ Hensch
Associates, Inc.

Name	Role	Email
Kimley-Horn		
Michael Feeney, P.E., FITE	Project Manager	Michael.Feeney@kimley-horn.com
Kevin Hoppers, P.E., PTOE	QA/QC	Kevin.Hoppers@kimley-horn.com
Payton Arens, P.E.	Deputy Project Manager	Payton.Arens@kimley-horn.com
Josie Ortiz, AICP	Planner	Josie.Ortiz@kimley-horn.com
Andi Vickers	Analyst	Andi.Vickers@kimley-horn.com
Gradient Group, LLC		
Linc Wright, P.E.	Engineer	LWright@gradient-group.com
Cristin Emshoff, ENV SP	Planner	cemshoff@gradient-group.com
Dena Snyder, P.E., PTOE	Planner	dsnyder@gradient-group.com
HDR Engineering Group, Inc.		
Reddy Edulakanti, P.E.	Engineer	Reddy.Edulakanti@hdrinc.com
Angela Martinez	Planner	Angela.Martinez@hdrinc.com
Hawes Hill & Associates		
Anthony Allender, AICP	Economic Planner	tallender@haweshill.com
Naina Magon, AICP	Land Use Planner	nmagon@haweshill.com
CJ Hensch		
Roger Allen	Data Collection	RogerAllen@cjhensch.com

Regional Collaboration • Transportation Planning • Multimodal Mobility

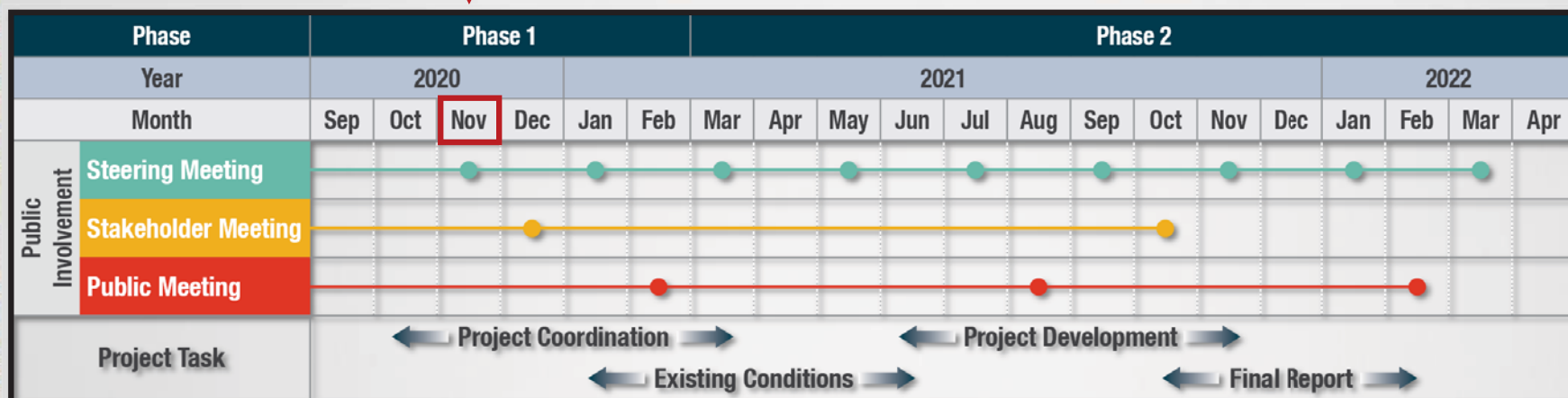


Project Overview - Study Area



Regional Collaboration • Transportation Planning • Multimodal Mobility

Project Overview – Schedule



Task #	Task Name
1	Project Management and Coordination
2	Public / Agency Involvement
3	Existing Conditions
4	Project Development
5	Final Report

Southeast Harris County Subregional Study – Phase 1

- Vision, Goals, Objectives set by Steering Committee
- Public Input on Needs and Deficiencies
- Finalize before Phase 2 – Improvement Alternatives



GOAL	STRATEGIES			PERFORMANCE MEASURE
	MANAGE [Improve System Management & Operations]	MAINTAIN [Asset Management]	EXPAND [Transportation Network Capacity]	
Improve Safety	●	●	⦿	Reduce Crash Rates of Fatalities and Serious Injuries
Achieve/Maintain State of Good Repair	●	●	●	Pavement & Bridge Conditions and Transit Asset Management
Move People and Goods Efficiently	●	●	⦿	Increase Reliability, Expand Multimodal Network and Improve Incident Response
Strengthen Regional Economic Competitiveness	●	●	●	Increase Truck Travel Time Reliability and Increase Multi-Occupant Vehicle Use
Conserve and Protect Natural and Cultural Resources	●	●	⦿	Emission Reductions and Reduce Impacts Requiring Mitigation

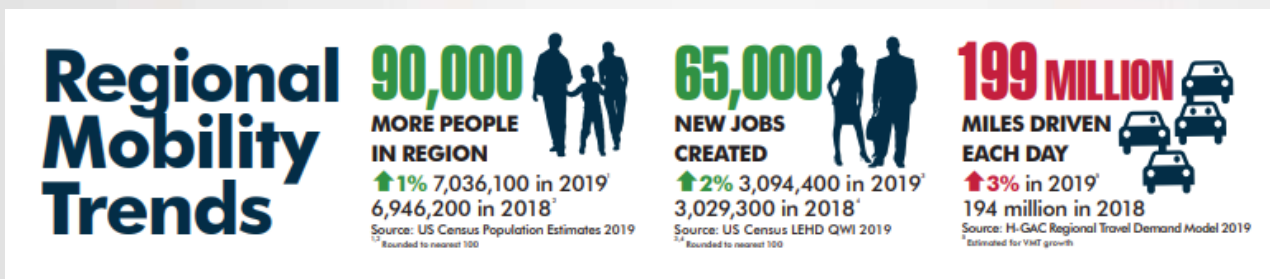
● Direct Impact ⦿ Related Impact

Vision - Draft



■ Vision:

- Recommend improvements to address multimodal transportation, development, and economic policy needs in the subregion that align with H-GAC's goals of mobility, safety, and economic competitiveness.



Goals - Draft



Goals:

1. Mobility – Expand Multimodal Travel Options
2. Mobility – Increase Operational Efficiency and Reliability
3. Safety – Improve Safety at High-Crash Locations
4. Safety – Reduce Conflict Points for All Modes

What performance measures should indicate progress toward these goals?



Figure 2-1: 2045 RTP Vision, Goals, and Performance Measures

Goals - Draft



Goals:

5. Economic – Facilitate Flow of Truck Traffic While Providing Mobility Solutions for Residents
6. Economic – Increase Truck Travel Time Reliability
7. Maintenance – State of Good Repair for Assets
8. Natural/Cultural Resources – Conserve and Protect

Goals - Draft

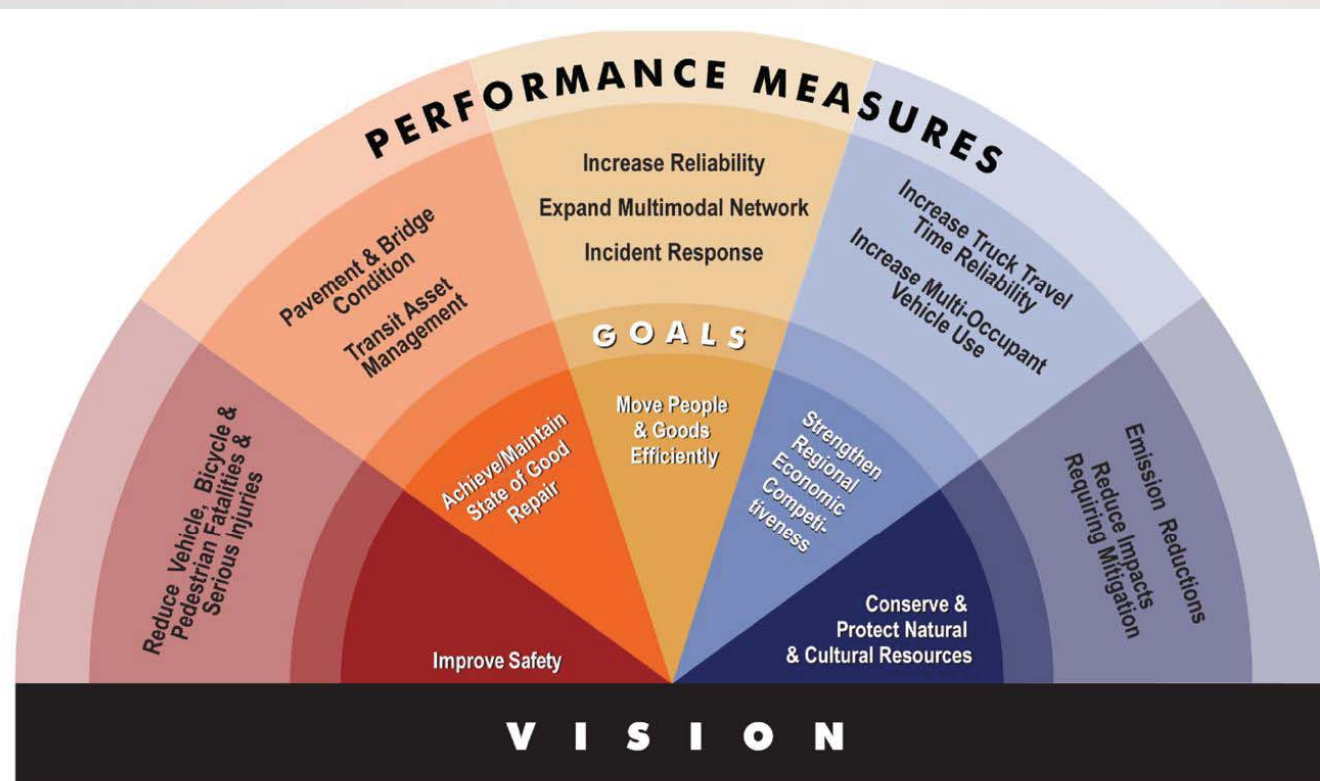


Figure 2-1: 2045 RTP Vision, Goals, and Performance Measures

Public Involvement Plan



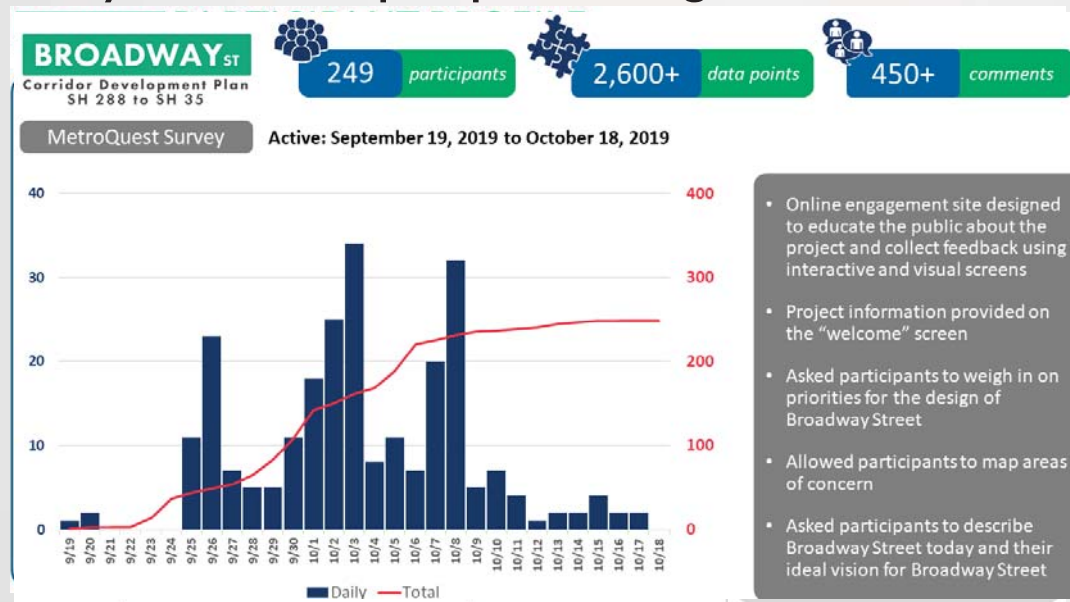
- Steering Committee meetings (10)
 - Develop Vision and Goals
 - Identify Stakeholders – Civic, Industry, Schools, and Public Safety
 - Identify Needs – Mobility, Safety, and Economic Opportunity
 - Identify Evaluation Criteria
 - Develop Improvement Options - Align With Vision and Goals.
 - Develop Prioritized Preferred Recommendations

- Stakeholder meetings (2) – **Suggested Contacts**

Public Involvement Plan

■ Outreach opportunities

- Project Website – Public Survey and Mapping Tools
- Public Meetings (3) – Translation Services Provided
- Community Events/Pop-Up Meetings

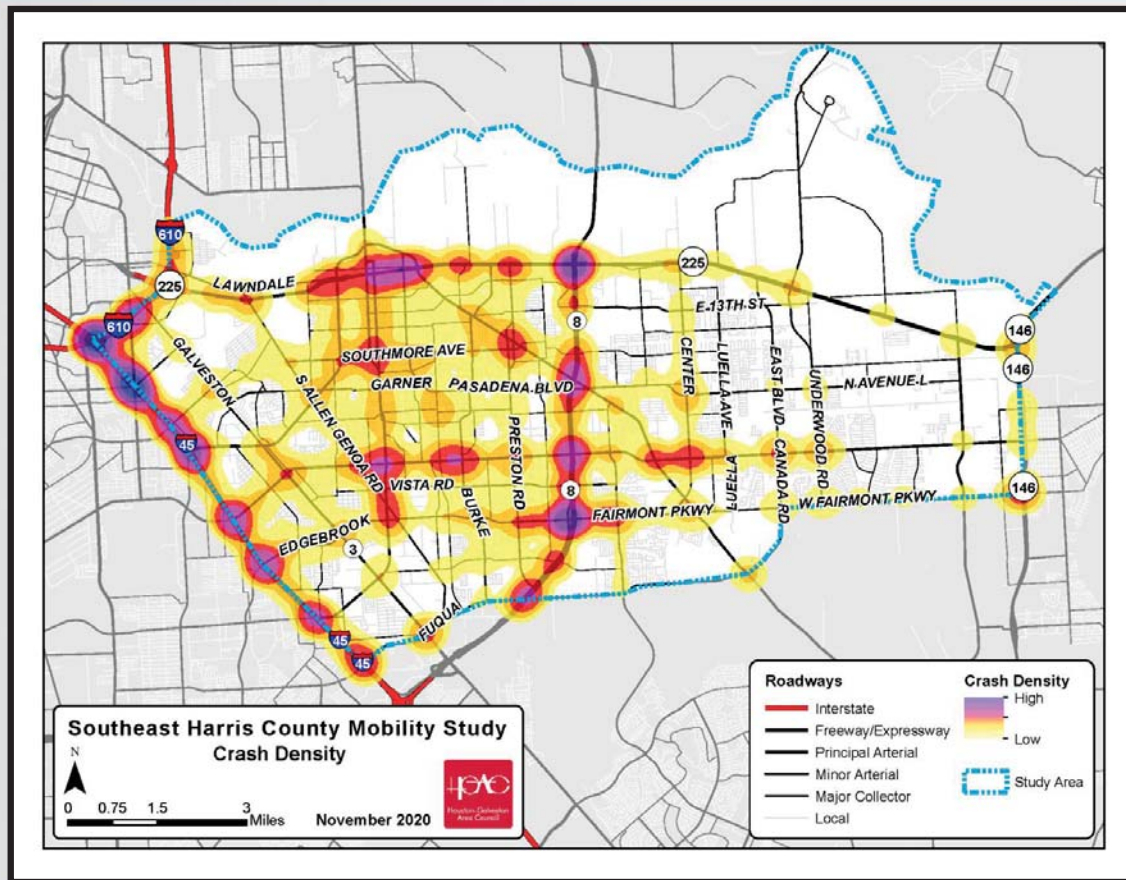


Existing Conditions – Identify Areas of Need

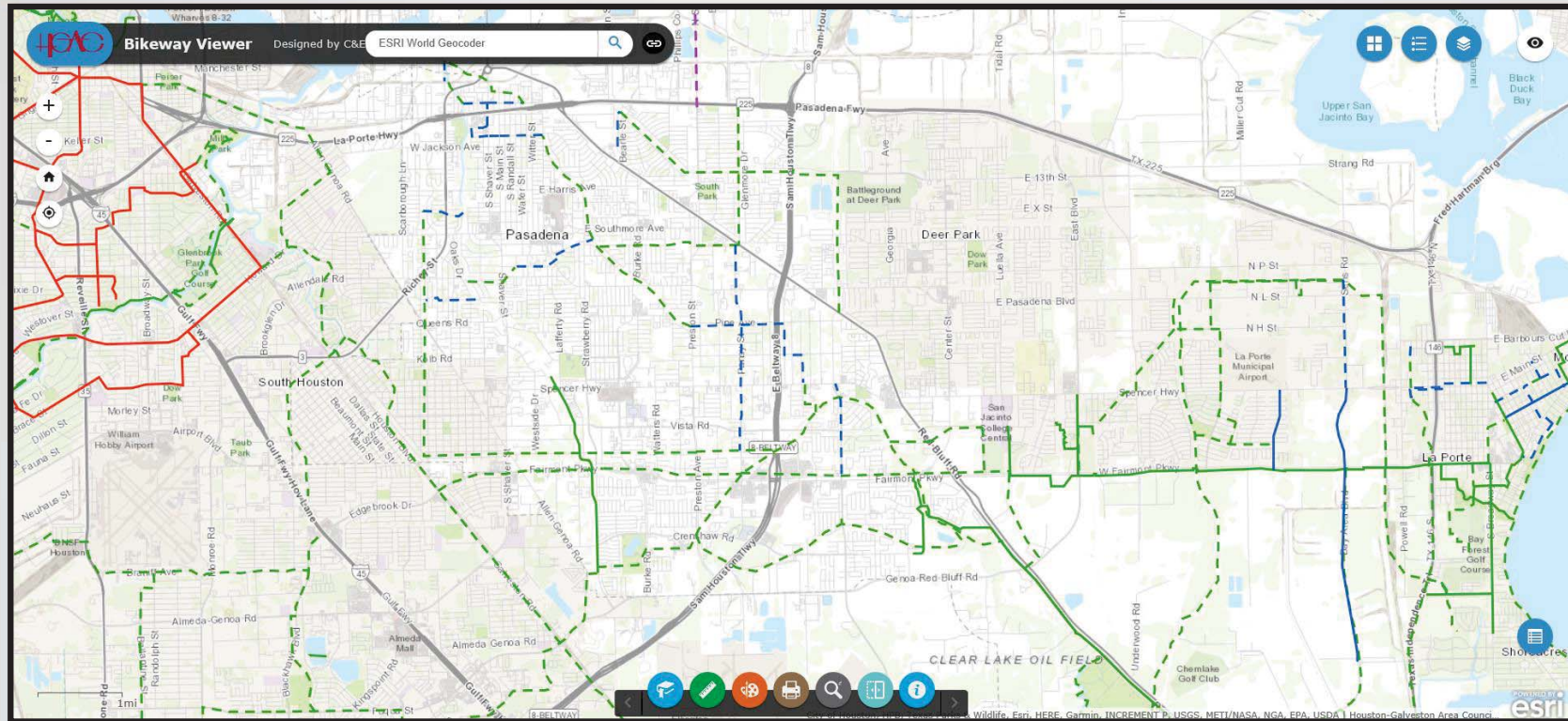
Short-, Medium-, Long-Term Needs

- 
- Active Transportation
 - Bicycle and Pedestrian Focus Areas
 - Transit
 - METRONext – Park Place – Routes 5 and 76
 - Harris County Transit – Routes 5 and 7
 - Parking
 - Freight / Truck
 - Short- and Long-Term Public Lots
 - Land use
 - Pasadena Livable Center
 - Freight Distribution Centers
 - Urban Form / Development Patterns
 - Density, Districts, Neighborhoods
 - Linkages
 - Initial Network Screening
 - Corridors (25)
 - Intersections (50/100)
 - Safety and Congestion Conditions
 - Mobility and Complete Streets

Existing Conditions – Crash Data



Existing Conditions – Bike/Ped Facilities



Regional Collaboration • Transportation Planning • Multimodal Mobility



Existing Conditions – Transit Services

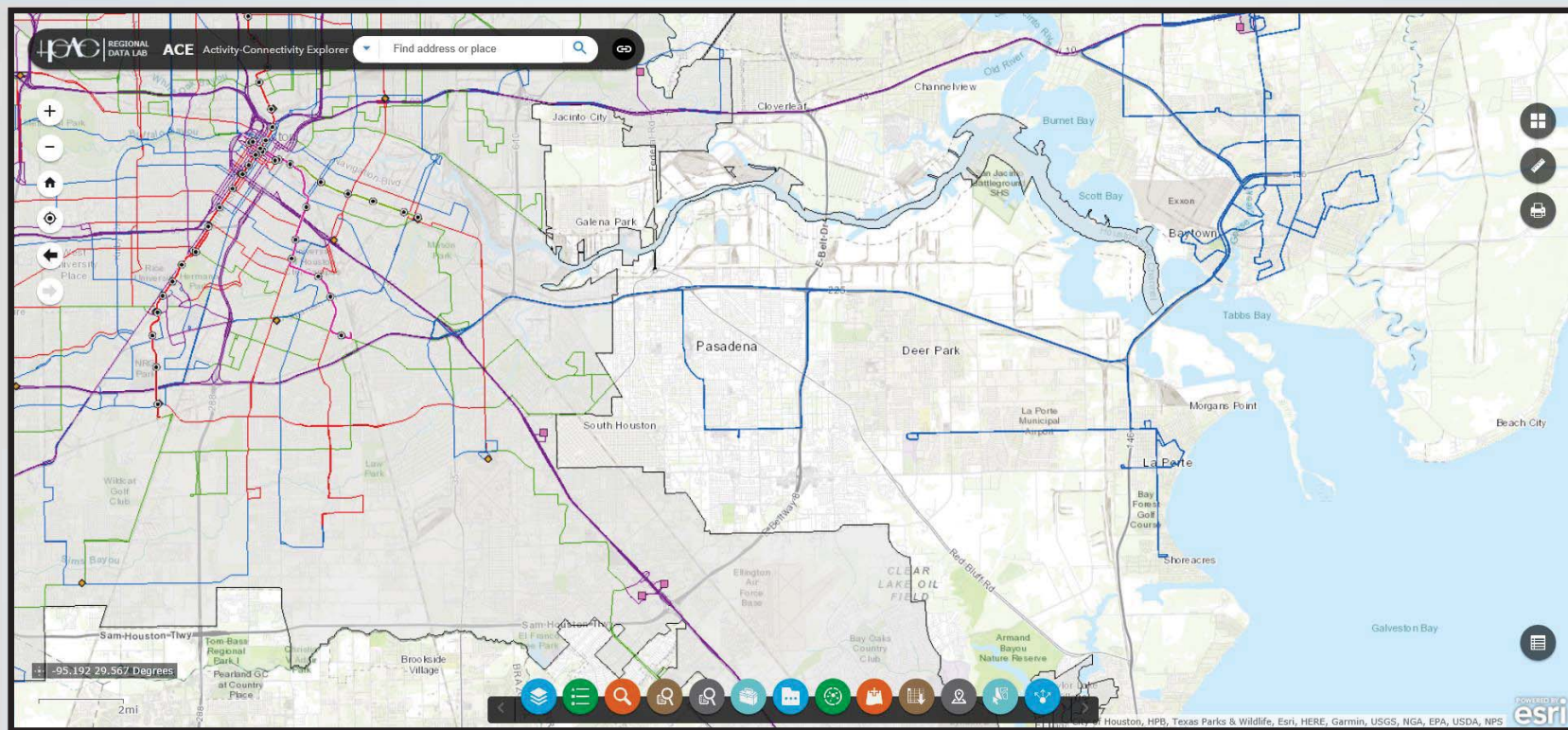


Regional Public Transit

Harris County Transit (Eastern Harris County)

METRO Transit Facilities (Detail)

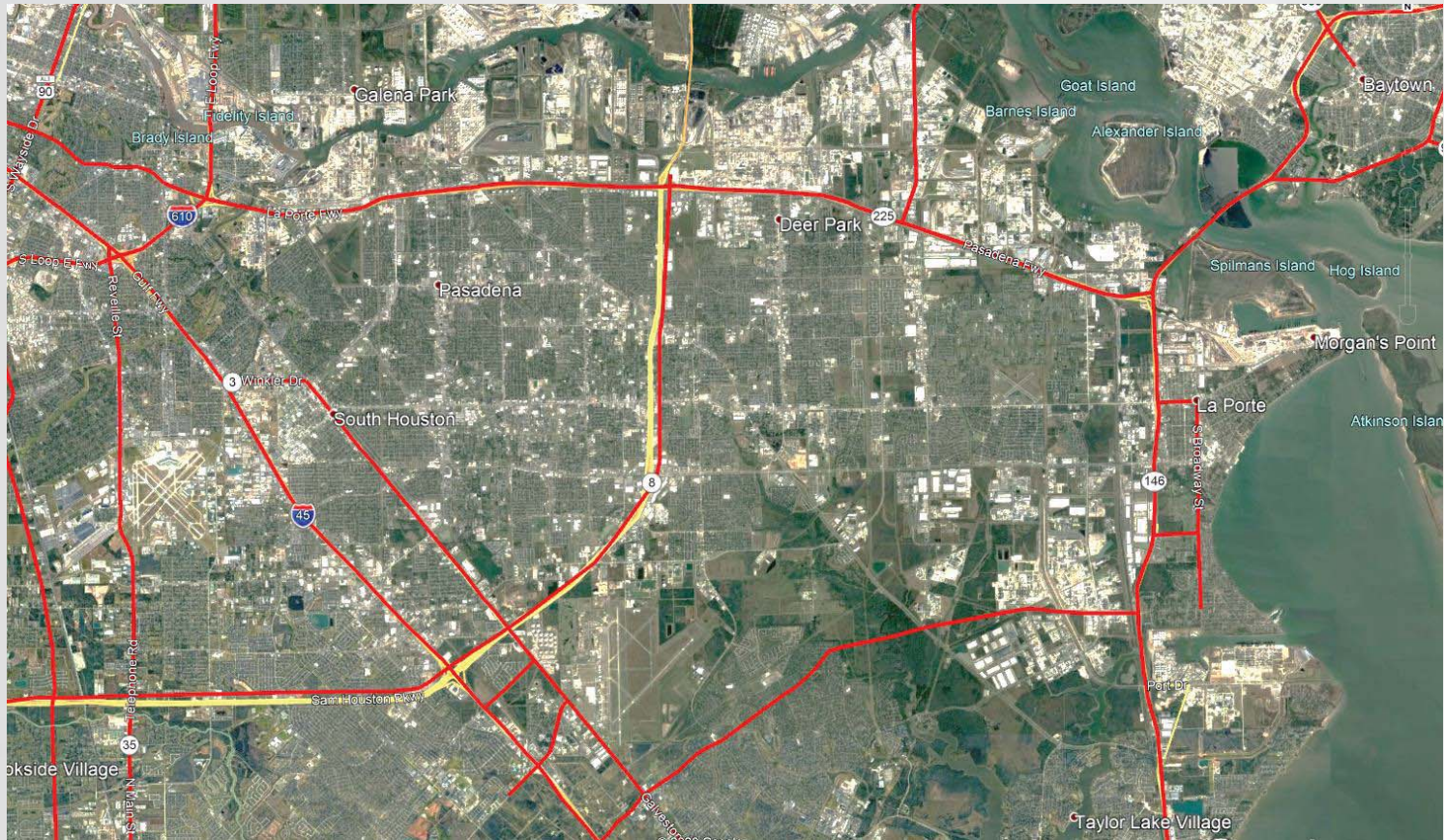
- LRT Rail Stations
- Transit Centers
- Park & Ride
- LRT Rail Lines
 - GREEN LINE
 - PURPLE LINE
 - RED LINE
- Bus Routes
 - Blue
 - Green
 - Orange
 - ParkAndRide
 - Red
- METRO Service Area



Regional Collaboration • Transportation Planning • Multimodal Mobility



Existing Conditions – Freight Network

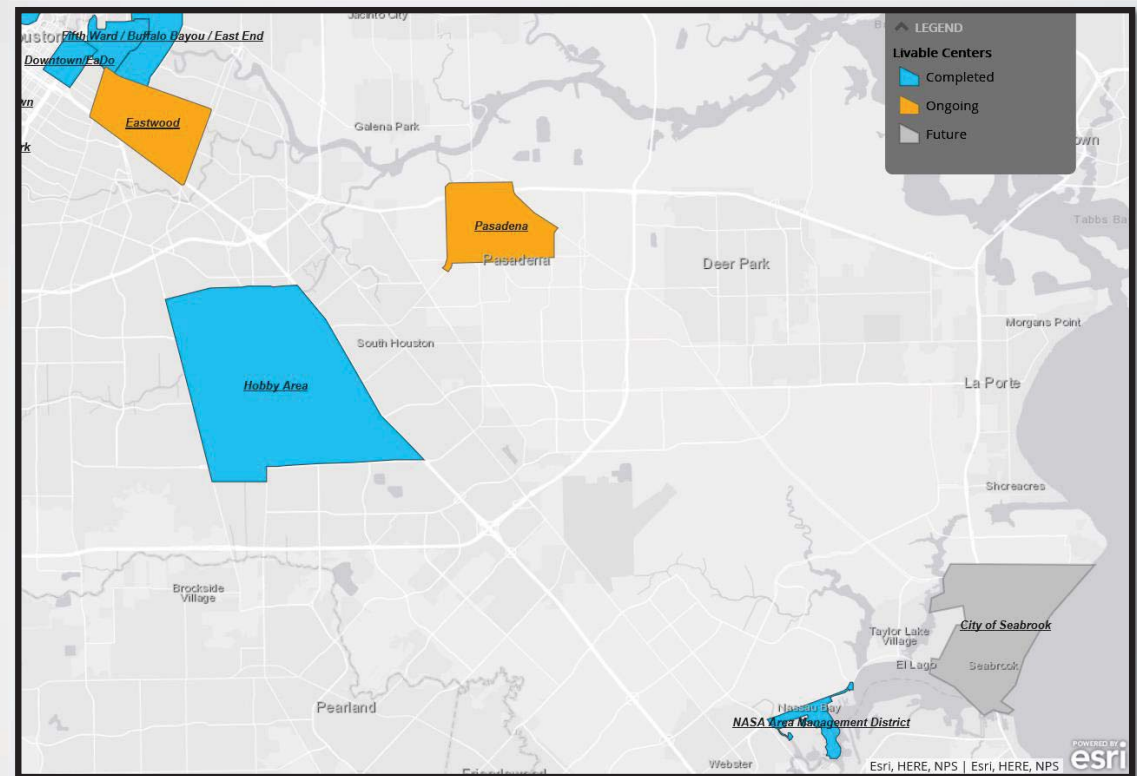


Regional Collaboration • Transportation Planning • Multimodal Mobility

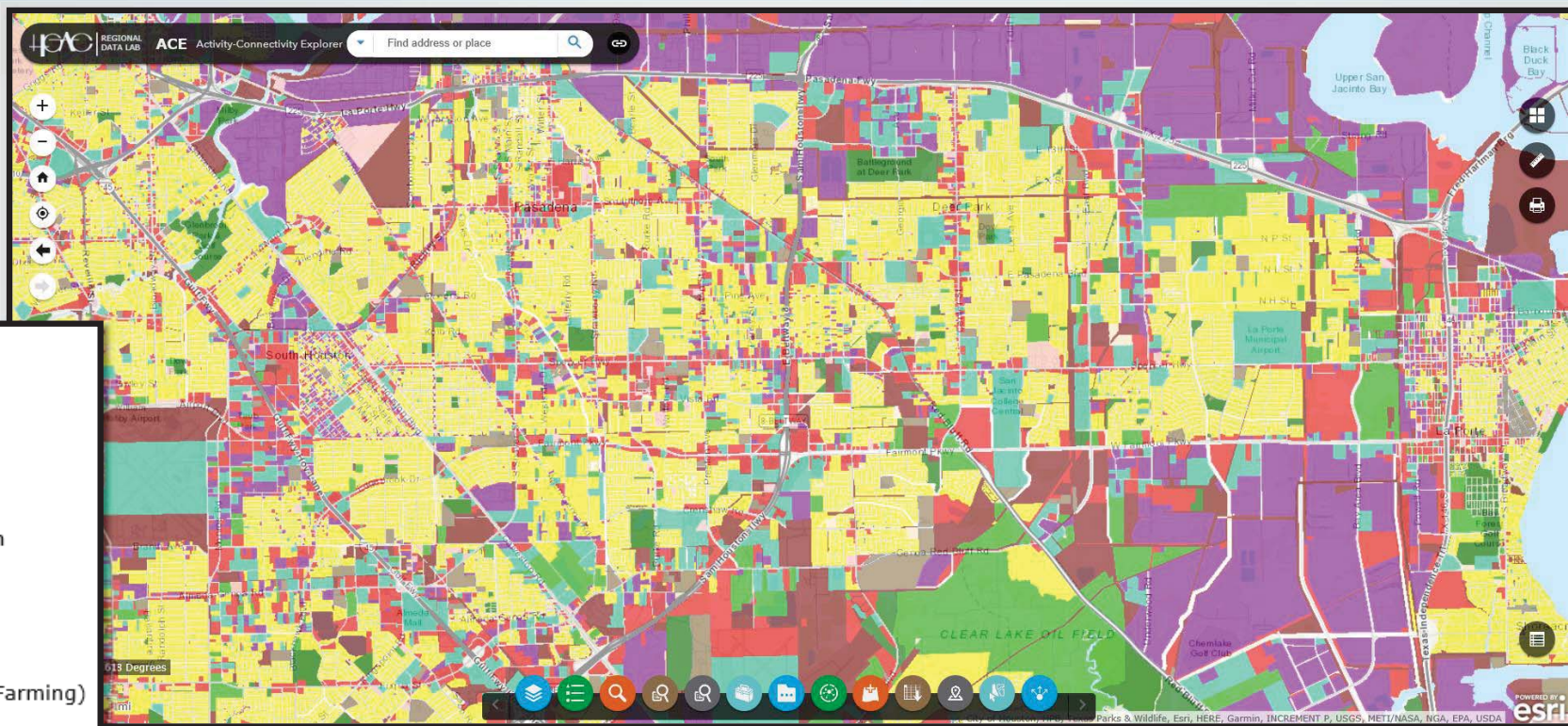
Existing Conditions – Livable Centers



- Pasadena (Ongoing)
- Hobby Area (Complete)
- NASA Area (Complete)
- Seabrook (Future)



Existing Conditions – Land Use

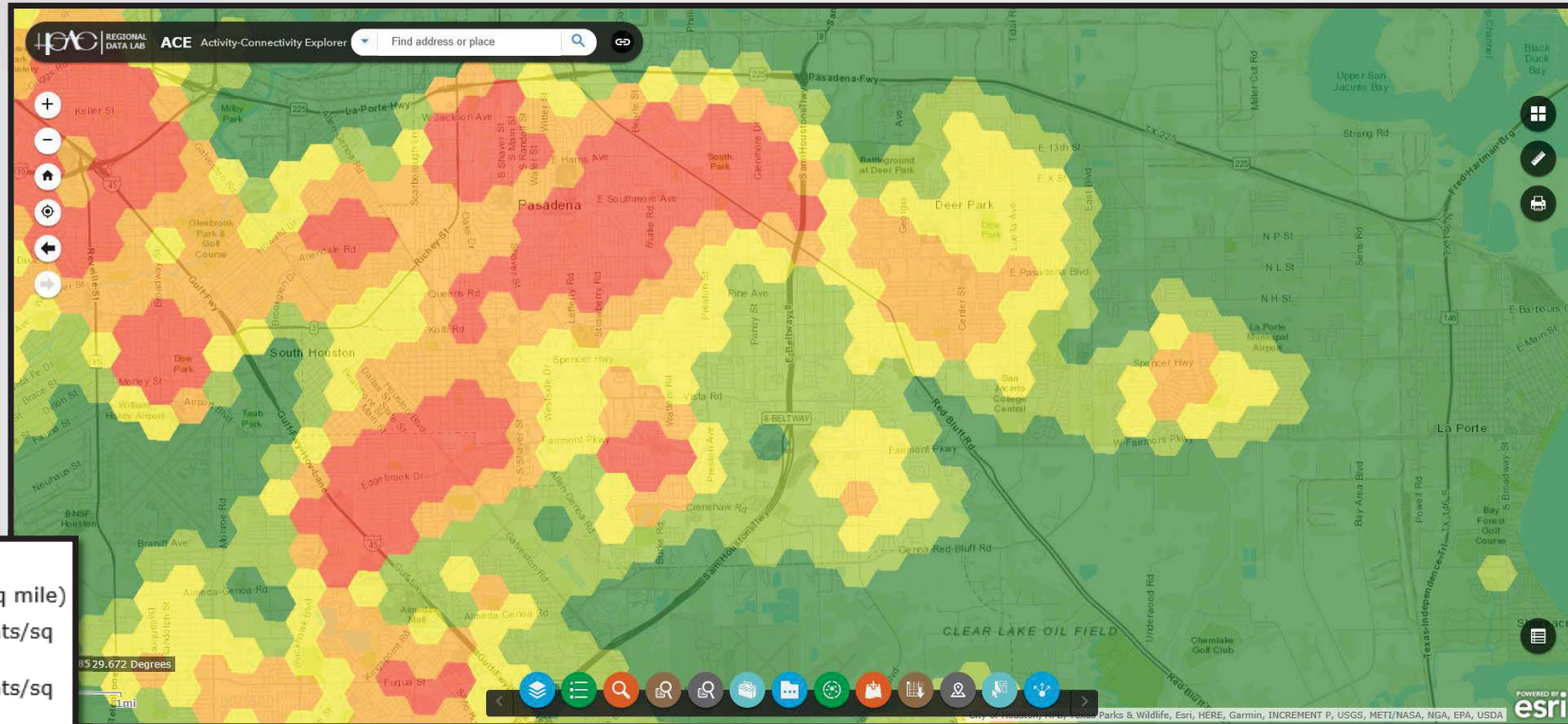


Land Use (Current)

Current Land Use

- Commercial
- Industrial
- Residential
- Government/Medical/Education
- Multiple
- Other
- Parks/Open Spaces
- Vacant Developable (includes Farming)
- Undevelopable
- Unknown
- Undetermined

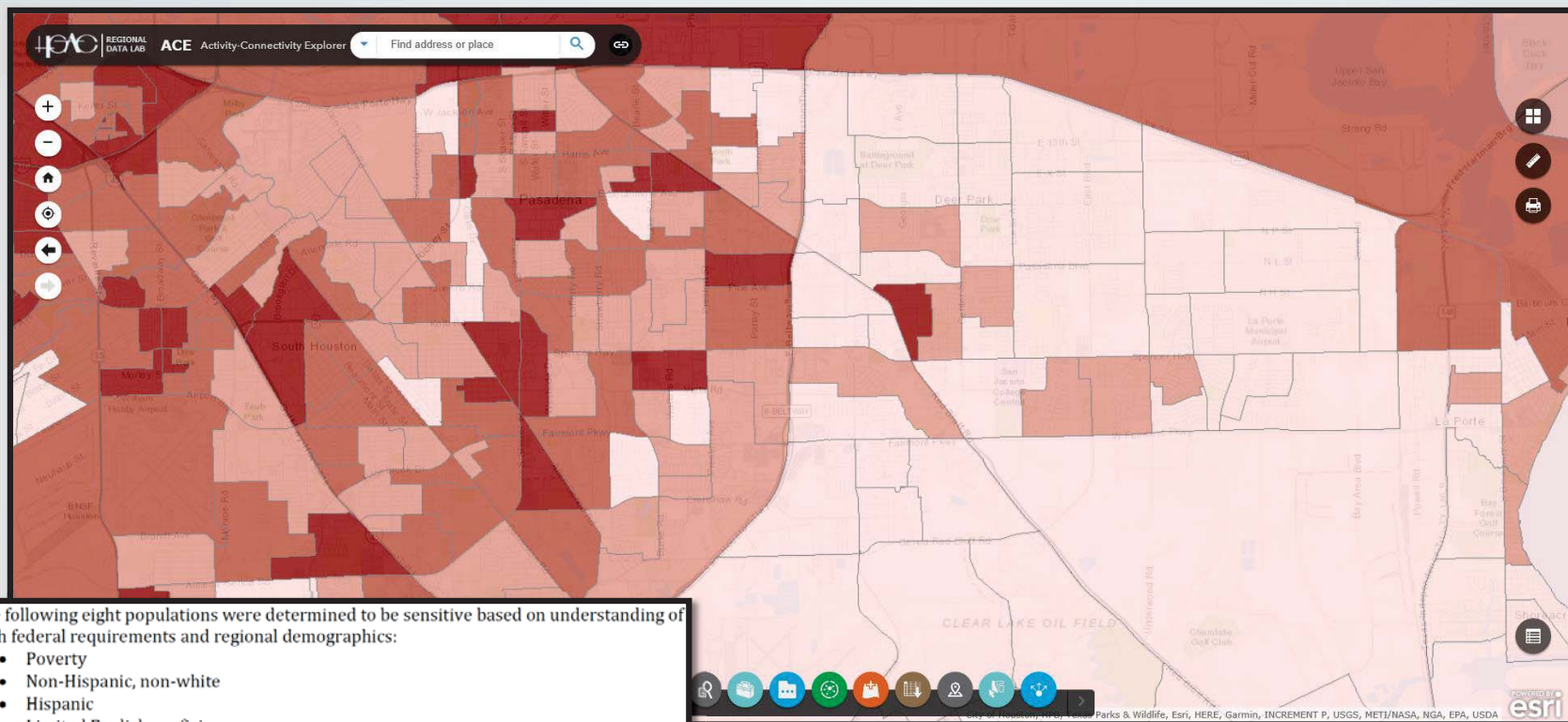
Existing Conditions – Urban Form



Population Density

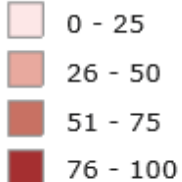
Green	0.0 - 0.2 (1 - 1,800 residents/sq mile)
Light Green	0.2 - 0.4 (1,801 - 3,500 residents/sq mile)
Yellow	0.5 - 0.6 (3,501 - 5,000 residents/sq mile)
Orange	0.6 - 0.8 (5,001 - 7,000 residents/sq mile)
Red	0.8 - 1.0 (7,001 + residents/sq mile)

Existing Conditions – Urban Form



Vulnerable Population

Vulnerable Population



The following eight populations were determined to be sensitive based on understanding of both federal requirements and regional demographics:

- Poverty
- Non-Hispanic, non-white
- Hispanic
- Limited English proficiency
- Disabled family
- Elderly
- Car-less
- Single female householder with child/children in the household.

Network Screening - Overview



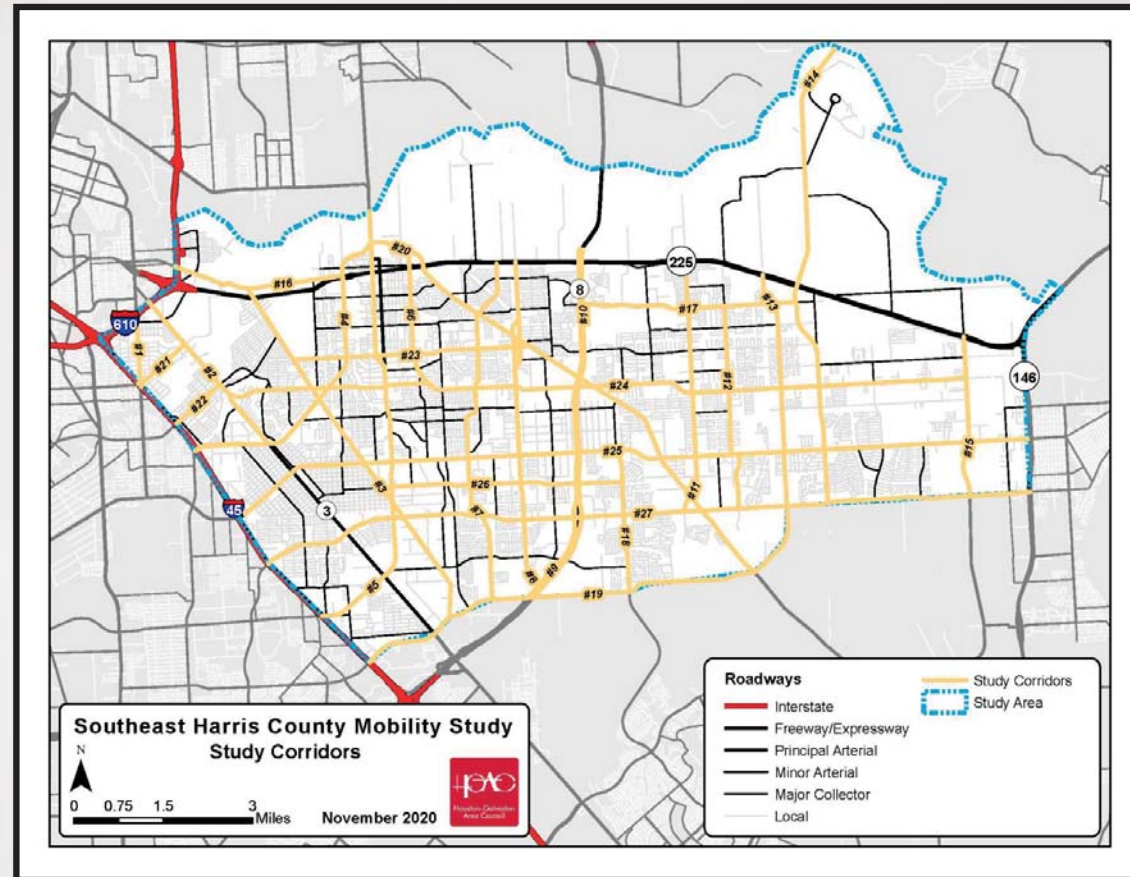
- **Mobility:**
 - Corridors (25)
 - Intersections (100)
- **Safety:**
 - Segments (25)
 - Intersections (50)
- **Community Interest:**
 - H-GAC Staff
 - Steering Committee
 - Public

Network Screening – Corridor Mobility



ID STREET (LENGTH)

1. BROADWAY (1.3 mi)
2. GALVESTON (3.1 mi)
3. ALLEN GENOA (6.6 mi)
4. RICHEY (7.2 mi)
5. S SHAVER ST (7.5 mi)
6. N PASADENA BLVD (2.1 mi)
7. BURKE (6 mi)
8. PRESTON RD (6.5 mi)
9. BELTWAY 8 NBFR (6.2 mi)
10. BELTWAY 8 SBFR (6.1 mi)
11. CENTER (4.3 mi)
12. LUELLA AVE (3.4 mi)
13. CANADA RD ~ EAST BLVD (4 mi)
14. INDEPENDENCE PKWY ~ UNDERWOOD RD ~ BATTLEGROUND (8 mi)
15. BAY AREA ~ 26TH ST (2.7 mi)
16. LAWNSDALE (2.9 mi)
17. E 13TH ST (3.6 mi)
18. SPACE CENTER (2.4 mi)
19. FUQUA ~ GENOA RED BLUFF RD (8.2 mi)
20. RED BLUFF RD (8.8 mi)
21. PARK PLACE BLVD (1 mi)
22. HOWARD (1 mi)
23. SOUTHMORE AVE (4 mi)
24. ALLENDALE RD (12.7 mi)
25. (W) PASADENA BLVD ~ N AVENUE L (13.5 mi)
26. VISTA RD (4 mi)
27. (W) FAIRMONT PKWY ~ EDGEBROOK (13 mi)

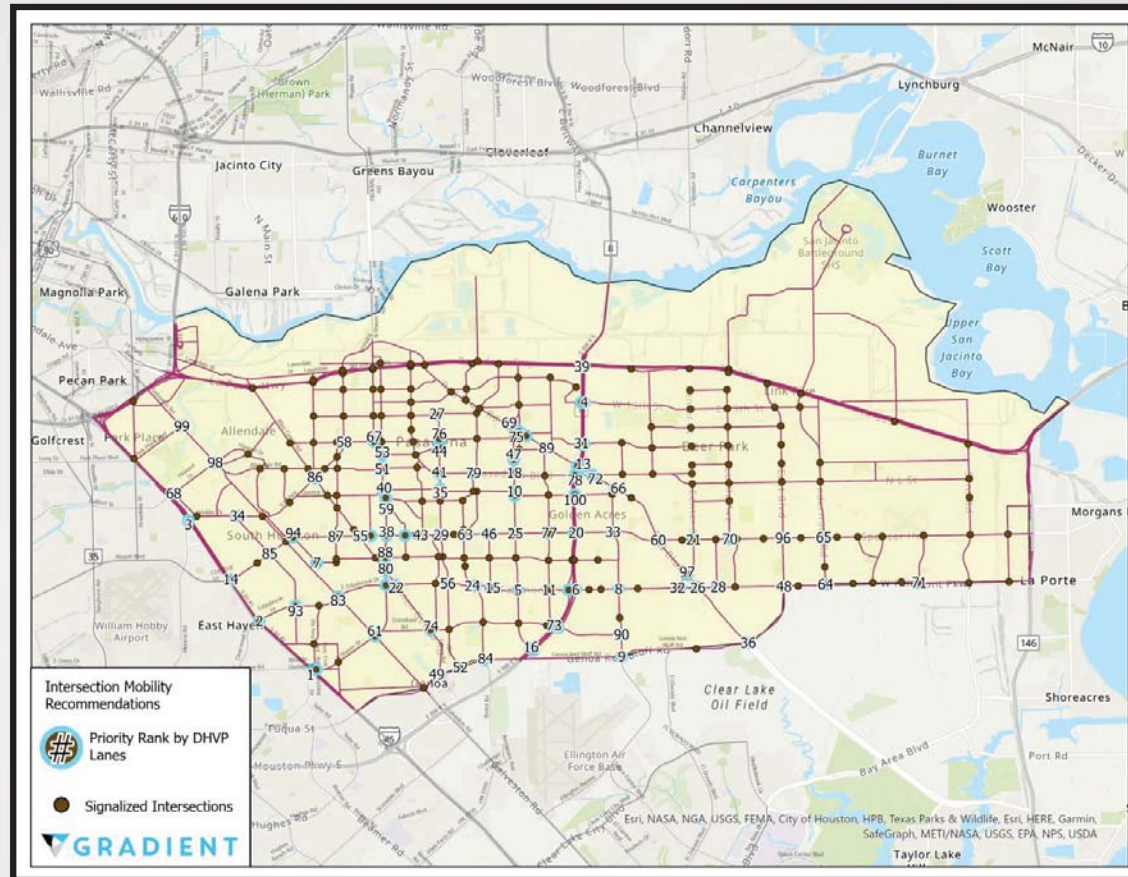


Network Screening – Intersection Mobility



ID STREET 1 at STREET 2

1. IH45 NB Frontage Rd at ALMEDA GENOA
2. IH45 NB Frontage Rd at EDGEBROOK
3. IH45 Frontage Rd at GALVESTON
4. Bltwy 8 Frontage Rd at GREENSHADOWS DR
5. FAIRMONT PKWY at PRESTON RD
6. Bltwy 8 NB Frontage Rd at FAIRMONT PKWY
7. TEXAS at AVE J
8. SPACE CENTER at FAIRMONT PKWY
9. SPACE CENTER at GENOA RED BLUFF RD
10. CHERRY BROOK at PRESTON RD
11. PANSY ST at FAIRMONT PKWY
12. Bltwy 8 SB Frontage Rd at FAIRMONT PKWY
13. Bltwy 8 Frontage Rd at RED BLUFF RD
14. IH45 NB Frontage Rd at AIRPORT BLVD
15. FAIRMONT PKWY at WATTERS
16. Bltwy 8 SB Frontage Rd at PRESTON RD
17. PINE AVE at PRESTON RD
18. PRESTON RD at PASADENA BLVD
19. ALMEDA GENOA at FREY
20. Bltwy 8 Frontage Rd at SPENCER HWY
21. CENTER ST at SPENCER HWY
22. S ALLEN GENOA RD at FAIRMONT PKWY
23. Bltwy 8 Frontage Rd at SPENCER HWY
24. FAIRMONT PKWY at BURKE
25. PRESTON RD at SPENCER HWY



Network Screening – Intersection Mobility



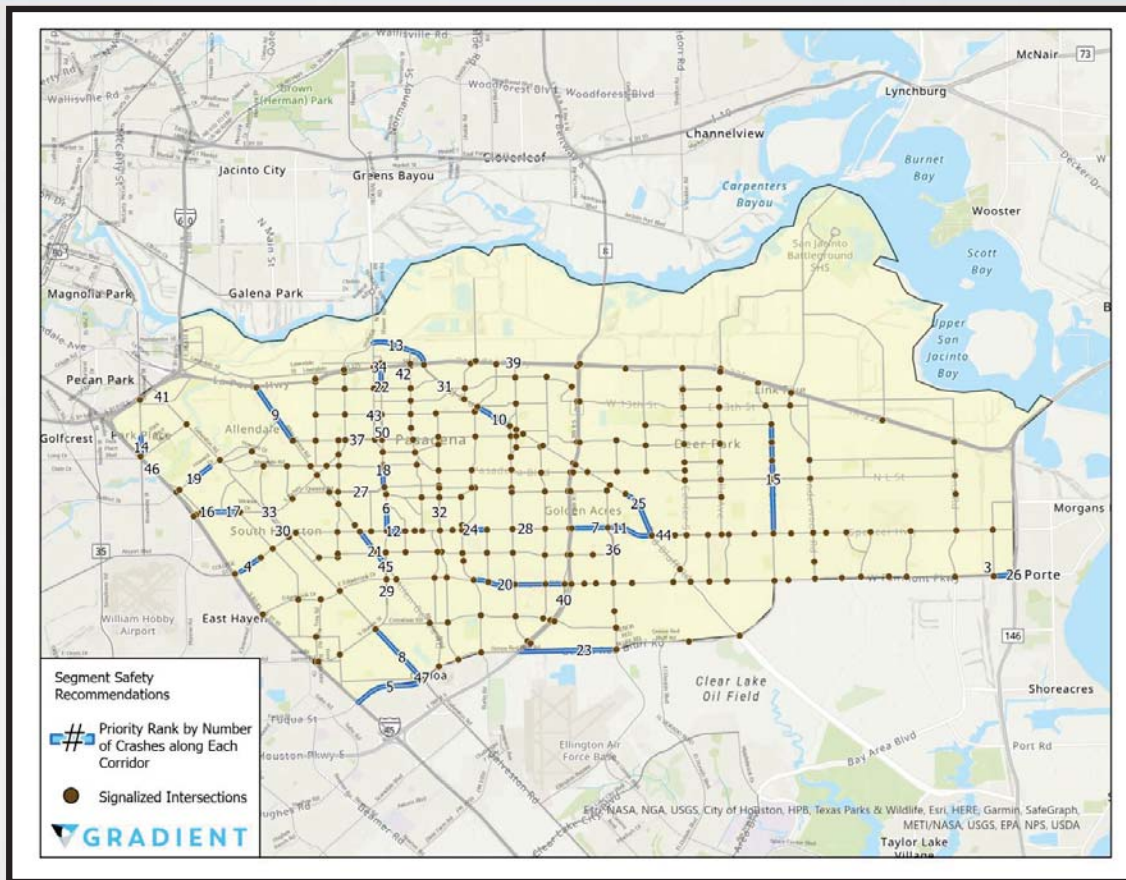
ID STREET 1 at STREET 2

26. FAIRMONT PKWY at RED BLUFF RD
27. HARRIS AVE at STRAWBERRY RD
28. FAIRMONT PKWY at CUNNINGHAM
29. STRAWBERRY RD at SPENCER HWY
30. Bltwy 8 Frontage Rd at GREENSHADOWS DR
31. Bltwy 8 Frontage Rr at RAMSEY
32. CENTER ST at FAIRMONT PKWY
33. SPACE CENTER at SPENCER HWY
34. Winkler Dr at MAIN ST
35. STRAWBERRY RD at PAULINE
36. GENOA RED BLUF at RED BLUFF RD
37. Bltwy 8 Frontage Ra at SAN AUGUSTINE AVE
38. S SHAVER ST at SPENCER HWY
39. SH 225 EB Frontage Rd at SB Frontage Rd
40. S SHAVER ST at PAULINE
41. STRAWBERRY RD at PASADENA BLVD
42. S SHAVER ST at EDGEBROOK
43. LAFFERTY at SPENCER HWY
44. STRAWBERRY RD at E HOUSTON AVE
45. WESTSIDE DR at SPENCER HWY
46. WATTERS at SPENCER HWY
47. AUSTIN AVE at PRESTON RD
48. GENOA RED BLUFF RD at W FAIRMONT PKWY
49. ALLEN GENOA at FUQUA
50. Bltwy 8 Frontage Rr at RED BLUFF RD
51. S SHAVER ST at GARNER
52. GENOA RED BLUFF RD at STRAWBERRY
53. S SHAVER ST at E HOUSTON AVE
54. S SHAVER ST at ALLENDALE RD
55. SPENCER at S ALLEN GENOA RD
56. FAIRMONT PKWY at STRAWBERRY RD
57. SPENCER at PEREZ
58. SOUTHMORE AVE at RICHEY ST
59. S SHAVER ST at WESTSIDE DR
60. RED BLUFF RD at SPENCER HWY
61. S SHAVER ST at SH 3
62. S SHAVER ST at FRESA RD
63. SPENCER HWY at BURKE
64. UNDERWOOD RD at W FAIRMONT PKWY
65. UNDERWOOD RD at SPENCER HWY
66. RANDOLPH at RED BLUFF RD
67. S SHAVER ST at SOUTHMORE AVE
68. HOWARD at WINKLER DR
69. RED BLUFF RD at PRESTON RD
70. LUELLA AVE at SPENCER
71. W FAIRMONT PKWY at DRIFTWOOD
72. PASADENA BLVD at RED BLUFF RD
73. Bltwy 8 Frontage Rr at CRENSHAW RD
74. CRENSHAW RD at S ALLEN GENOA RD
75. RED BLUFF RD at PRESTON RD
76. STRAWBERRY RD at SOUTHMORE AVE
77. SPENCER HWY at PANSY ST
78. Bltwy 8 Frontage Rb at PASADENA BLVD
79. BURKE at PASADENA BLVD
80. S SHAVER ST at S ALLEN GENOA RD
81. STRAWBERRY RD at CHERRY BROOK
82. Bltwy 8 Frontage Rb at PASADENA BLVD
83. GALVESTON at EDGEBROOK
84. GENOA RED BLUFF RD at BURKE
85. COLLEGE ST at MAIN ST
86. RICHEY ST at S ALLEN GENOA RD
87. SPENCER at N 8TH ST
88. S SHAVER ST at AVE I
89. RED BLUFF RD at TRUXTON
90. SPACE CENTER at CRENSHAW RD
91. RED BLUFF RD at DEEPWATER AVE
92. Bltwy 8 Frontage Rr at CRENSHAW RD
93. THETA at EDGEBROOK
94. TEXAS at SPENCER
95. Bltwy 8 NB Frontage Rd at PRESTON RD
96. SPENCER HWY at EAST BLVD
97. RED BLUFF RD at CENTER ST
98. HOWARD at GALVESTON
99. GALVESTON at PARK PLACE BLVD
100. Bltwy 8 Frontage Ra at PINE AVE

Network Screening – Segment Safety



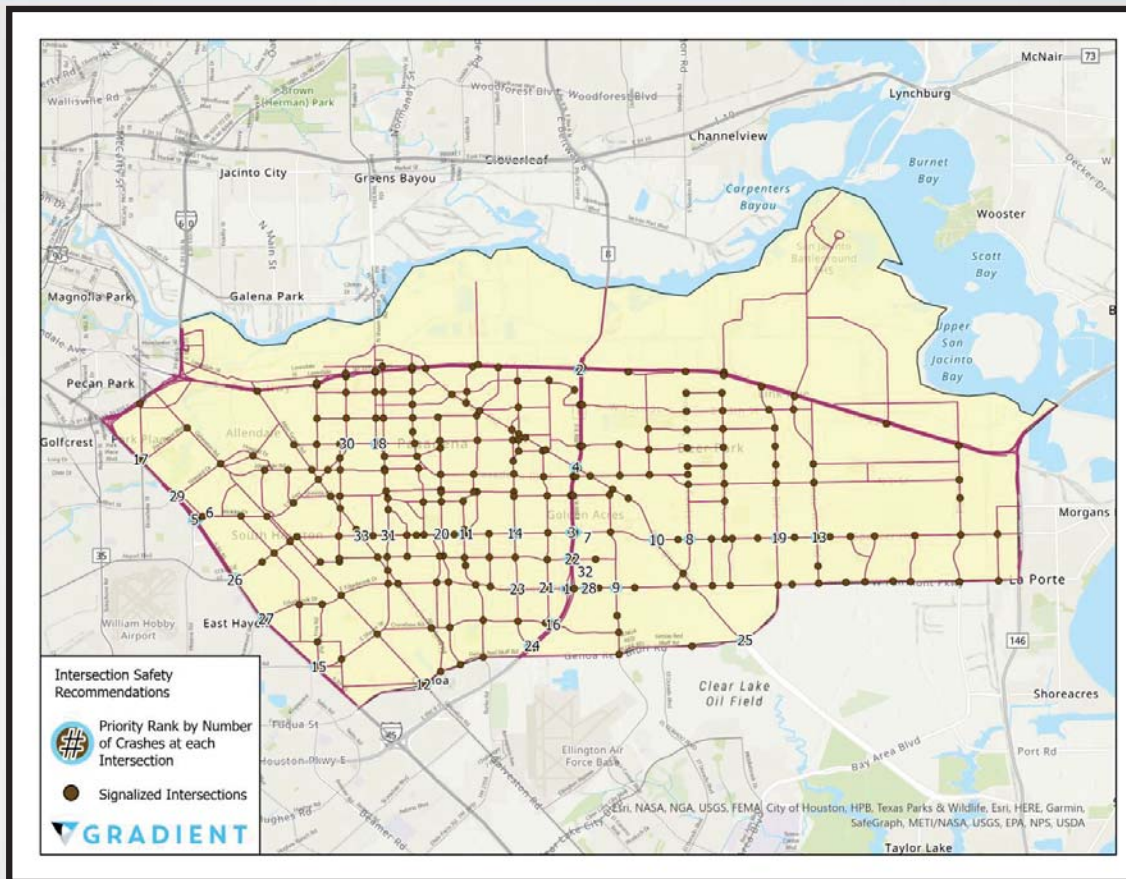
ID	NAME	# OF CRASH
1.	BROADWAY ST	(248)
2.	EDGEBROOK DR	(196)
3.	W FAIRMONT PKWY	(177)
4.	COLLEGE AVE	(148)
5.	IH0045	(137)
6.	SHAVEN ST	(124)
7.	SPENCER HWY	(106)
8.	SH0003	(101)
9.	ALLEN GENOA RD	(101)
10.	RED BLUFF RD	(101)
11.	SPENCER HWY	(100)
12.	SPENCER HWY	(100)
13.	RED BLUFF RD	(98)
14.	BROADWAY ST	(95)
15.	EAST BLVD	(94)
16.	SH0003	(90)
17.	SH0003	(84)
18.	SHAVEN ST	(84)
19.	HOWARD DR	(83)
20.	FAIRMONT PKWY	(83)
21.	S ALLEN GENOA RD	(83)
22.	SH0225	(83)
23.	GENOA RED BLUFF	(81)
24.	SPENCER HWY	(81)
25.	RED BLUFF RD	(76)
26.	SH0146	(73)
27.	PEREZ RD	(72)
28.	SPENCER HWY	(71)
29.	S SHAVEN ST	(70)
30.	SH0003	(69)
31.	RED BLUFF RD	(69)
32.	STRAWBERRY RD	(69)
33.	S RICHEY ST	(69)
34.	SH0225	(67)
35.	SPACE CENTER BLVD	(67)
36.	W SOUTHMORE AVE	(67)
37.	SH0225	(66)
38.	SH0225	(65)
39.	E BELTWAY 8	(65)
40.	IH0610	(65)
41.	SH0225	(64)
42.	SHAVEN ST	(64)
43.	SPENCER HWY	(63)
44.	S SHAVEN ST	(63)
45.	IH0045	(61)
46.	PALMSPRINGS DR	(61)
47.	PALMSPRINGS DR	(61)
48.	PALMSPRINGS DR	(61)
49.	MAIN ST	(61)
50.	LAFFERTY RD	(60)



Network Screening – Intersection Safety



ID	NAME	# OF CRASH
1.	FAIRMONT PKWY (360)	26. IH0045 (125)
2.	SH0225 (317)	27. IH0045 (123)
3.	SPENCER HWY (286)	28. FAIRMONT PKWY (121)
4.	RED BLUFF RD (249)	29. IH0045 (121)
5.	IH0045 (229)	30. RICHEY ST (115)
6.	IH0045 (225)	31. S SHAVER ST (113)
7.	SPENCER HWY (211)	32. VISTA RD (108)
8.	CENTER ST (197)	33. SPENCER HWY (108)
9.	SPACE CENTER BLVD (192)	
10.	SPENCER HWY (190)	
11.	SPENCER HWY (173)	
12.	SH0003 (172)	
13.	SPENCER HWY (158)	
14.	SPENCER HWY (157)	
15.	IH0045 (150)	
16.	E BELTWAY 8 (149)	
17.	IH0045 (148)	
18.	W SOUTHMORE AVE (144)	
19.	SPENCER HWY (142)	
20.	SPENCER HWY (140)	
21.	PANSY ST (134)	
22.	VISTA RD (131)	
23.	FAIRMONT PKWY (131)	
24.	E BELTWAY 8 (127)	
25.	RED BLUFF RD (125)	



Next Steps



- Finalize Vision Statement and Goals
 - **By Next Meeting**
- Continue Network Screening
 - **Corridors and Intersections by Next Meeting**
- Schedule Stakeholder Meeting
 - **Provide Contact Information - Next Meeting**
- Existing Conditions Analysis
- Date of Next Steering Committee Meeting
- Schedule Initial Public Meeting

Thank You! Further Discussion



For More Information:

- Mike Burns, AICP
 - Mike.Burns@h-gac.com
- Allie Isbell, AICP
 - Allie.Isbell@h-gac.com