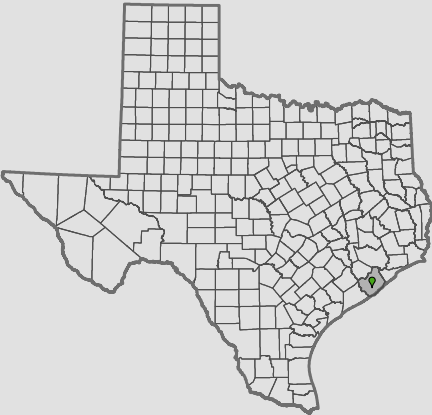


Internet Service with  
Speeds of at Least  
10 Mbps Download/  
1 Mbps Upload

**BRAZORIA  
COUNTY  
TEXAS**

Household Availability	Unserved Households
99.12%	940



- County Boundary
- Municipal Boundary
- Federal Land
- Local Road
- Water

*Fixed, Terrestrial Non-Mobile  
Internet Service*

- Detailed Service Areas
- FCC Service Availability

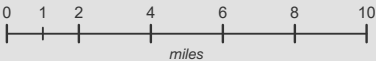


Published December 18, 2020

Broadband data displayed on this map are developed from a combination of direct provider outreach and data collection, FCC Form 477 broadband deployment filings, and independent research conducted by Connected Nation Texas. If a broadband provider was unwilling or unable to supply granular data and a detailed service area could not be developed, the provider's service availability is represented by FCC Form 477 data, a format which tends to be overstated. This map is not a guarantee of internet service availability. Mobile and satellite services may also be available.

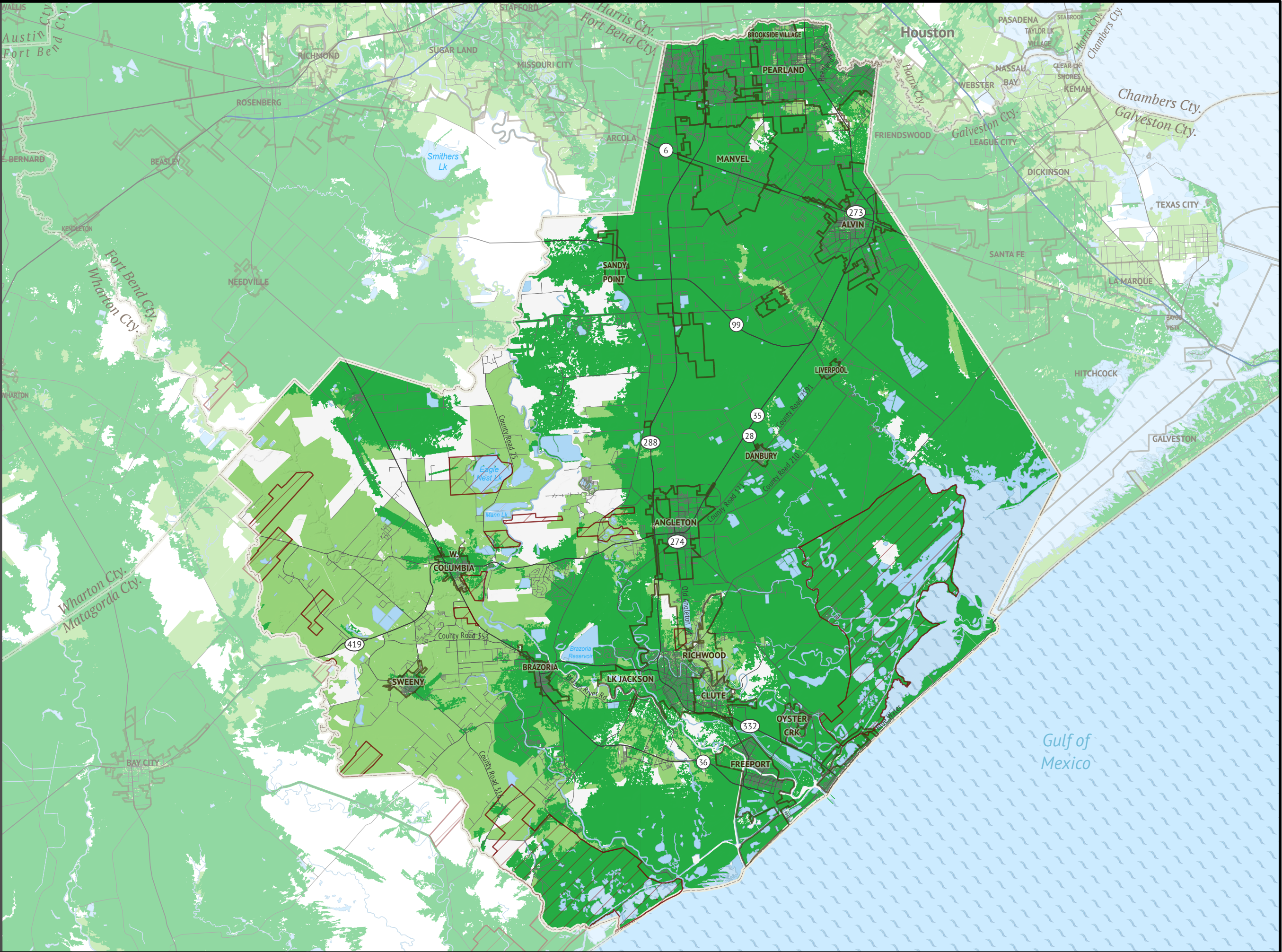
The current FCC definition of broadband is a minimum speed of 25 Mbps (Megabits per second) download and 3 Mbps upload.

Please submit feedback regarding any possible mapping inaccuracies at <https://connectednation.org/texas/feedback>. Updates to this map will occur in July 2021.



Connected Nation Texas is a statewide initiative funded through the Texas Rural Funders to support all Texans in leveraging broadband.

All Rights Reserved. © Copyright 2020, Connected Nation



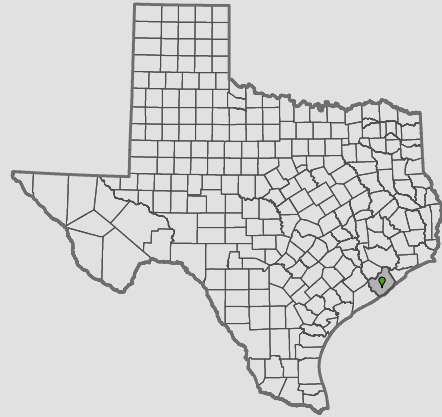




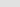


Broadband Service with  
Speeds of at Least  
25 Mbps Download/  
3 Mbps Upload

**BRAZORIA**  
**COUNTY**  
TEXAS

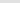
Household  
Availability  
**95.34%**

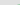
Unserved  
Households  
**4,964**



-  County Boundary
-  Municipal Boundary
-  Federal Land
-  Local Road
-  Water

*Fixed, Terrestrial Non-Mobile  
Broadband Service*

 Detailed Service Areas

 FCC Service Availability



Published December 18, 2020

Broadband data displayed on this map are developed from a combination of direct provider outreach and data collection, FCC Form 477 broadband deployment filings, and independent research conducted by Connected Nation Texas. If a broadband provider was unwilling or unable to supply granular data and a detailed service area could not be developed, the provider's service availability is represented by FCC Form 477 data, a format which tends to be overstated. This map is not a guarantee of internet service availability. Mobile and satellite services may also be available.

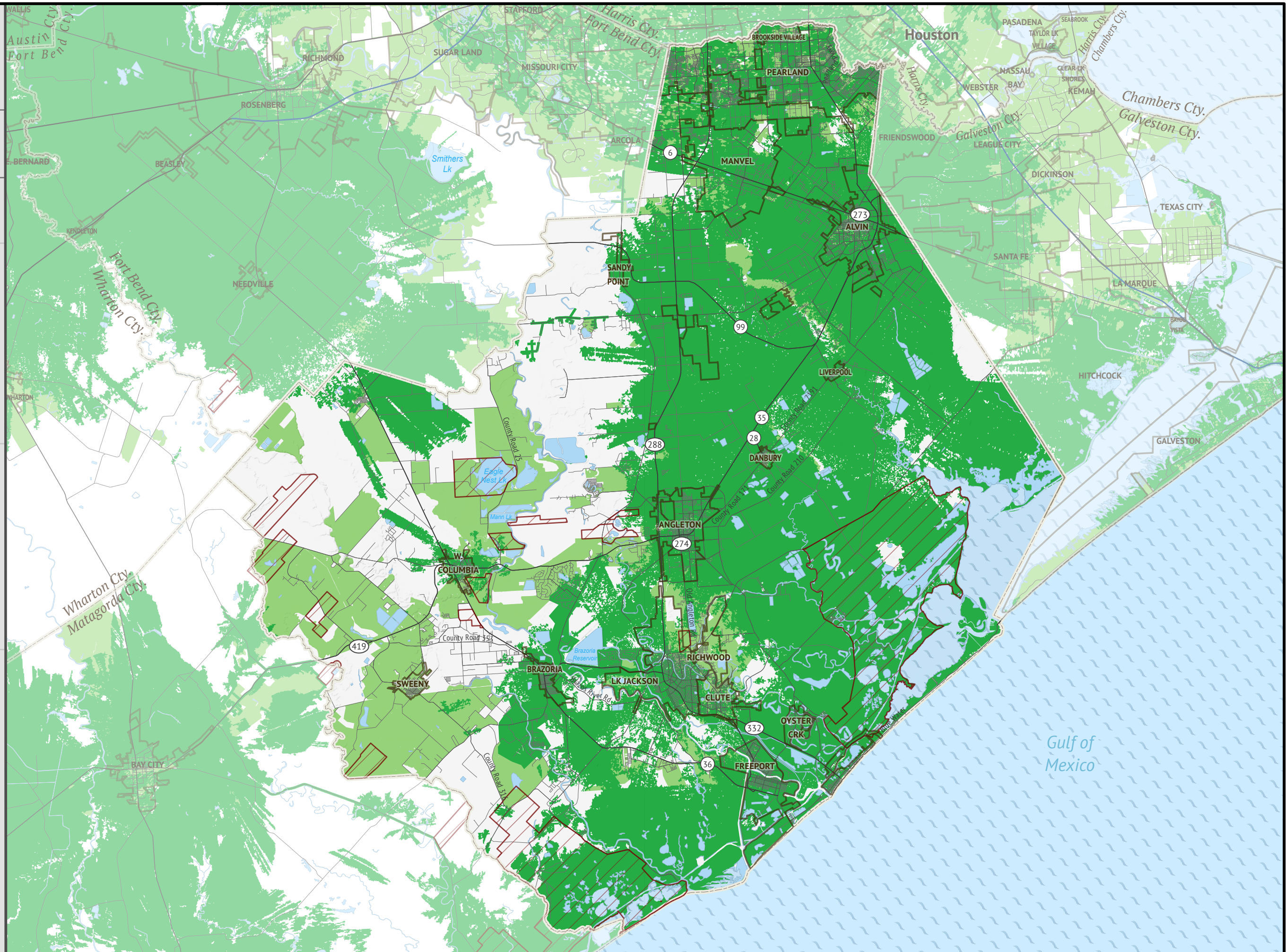
The current FCC definition of broadband is a minimum speed of 25 Mbps (Megabits per second) download and 3 Mbps upload.

Please submit feedback regarding any possible mapping inaccuracies at <https://connectednation.org/texas/feedback>. Updates to this map will occur in July 2021.



Connected Nation Texas is a statewide initiative funded through the Texas Rural Funders to support all Texans in leveraging broadband.

All Rights Reserved. © Copyright 2020, Connected Nation

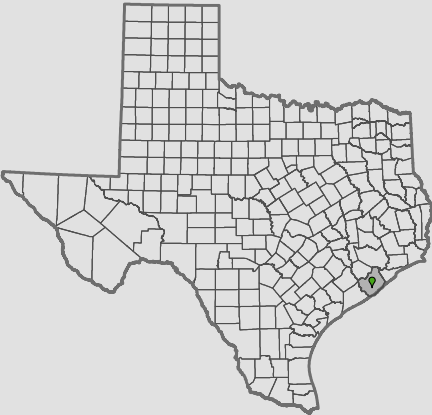




Broadband Service with  
Speeds of at Least  
50 Mbps Download/  
5 Mbps Upload

**BRAZORIA  
COUNTY  
TEXAS**

Household Availability	Unserved Households
90.53%	10,092



- County Boundary
- Municipal Boundary
- Federal Land
- Local Road
- Water

*Fixed, Terrestrial Non-Mobile  
Broadband Service*

- Detailed Service Areas
- FCC Service Availability

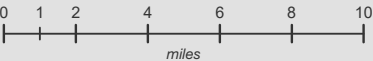


Published December 18, 2020

Broadband data displayed on this map are developed from a combination of direct provider outreach and data collection, FCC Form 477 broadband deployment filings, and independent research conducted by Connected Nation Texas. If a broadband provider was unwilling or unable to supply granular data and a detailed service area could not be developed, the provider's service availability is represented by FCC Form 477 data, a format which tends to be overstated. This map is not a guarantee of internet service availability. Mobile and satellite services may also be available.

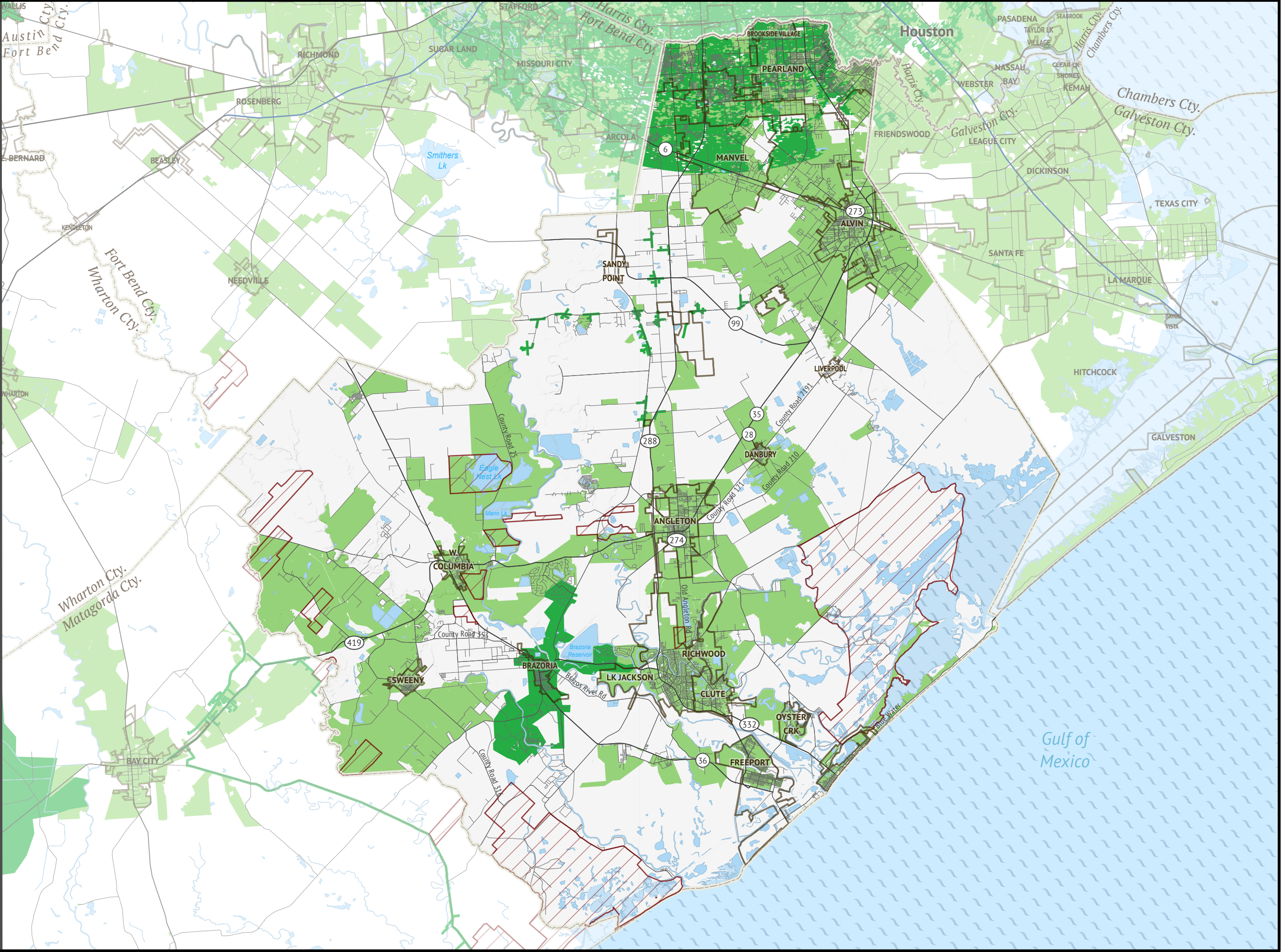
The current FCC definition of broadband is a minimum speed of 25 Mbps (Megabits per second) download and 3 Mbps upload.

Please submit feedback regarding any possible mapping inaccuracies at <https://connectednation.org/texas/feedback>. Updates to this map will occur in July 2021.



Connected Nation Texas is a statewide initiative funded through the Texas Rural Funders to support all Texans in leveraging broadband.

All Rights Reserved. © Copyright 2020, Connected Nation

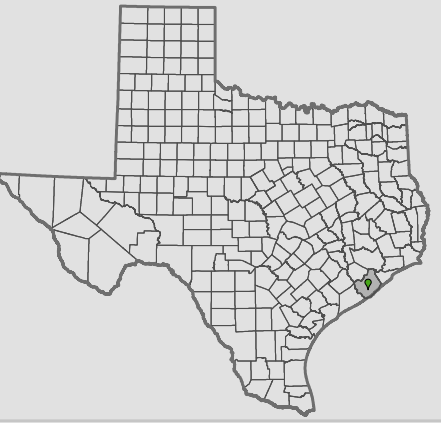




Broadband Service with  
Speeds of at Least  
100 Mbps Download/  
10 Mbps Upload

**BRAZORIA  
COUNTY  
TEXAS**

Household Availability	Unserved Households
88.22%	12,558



- County Boundary
- Municipal Boundary
- Federal Land
- Local Road
- Water

**Fixed, Terrestrial Non-Mobile  
Broadband Service**

- Detailed Service Areas
- FCC Service Availability



Published December 18, 2020

Broadband data displayed on this map are developed from a combination of direct provider outreach and data collection, FCC Form 477 broadband deployment filings, and independent research conducted by Connected Nation Texas. If a broadband provider was unwilling or unable to supply granular data and a detailed service area could not be developed, the provider's service availability is represented by FCC Form 477 data, a format which tends to be overstated. This map is not a guarantee of internet service availability. Mobile and satellite services may also be available.

The current FCC definition of broadband is a minimum speed of 25 Mbps (Megabits per second) download and 3 Mbps upload.

Please submit feedback regarding any possible mapping inaccuracies at <https://connectednation.org/texas/feedback>. Updates to this map will occur in July 2021.

0 1 2 4 6 8 10  
miles

Connected Nation Texas is a statewide initiative funded through the Texas Rural Funders to support all Texans in leveraging broadband.

All Rights Reserved. © Copyright 2020, Connected Nation

