

**EARLY WINS ...
GETTING THE BALL ROLLING!**











FORT WAYNE RIVERFRONT



CLINTON

ELIZABETH

TENNESSEE

HARRISON

4TH ST

WELLS

HIGH

SHERMAN

SUPERIOR

VAN BUREN

FAIRFIELD

HARRISON

CALHOUN

CLINTON

BARR

LAFAVETTE

CLAY

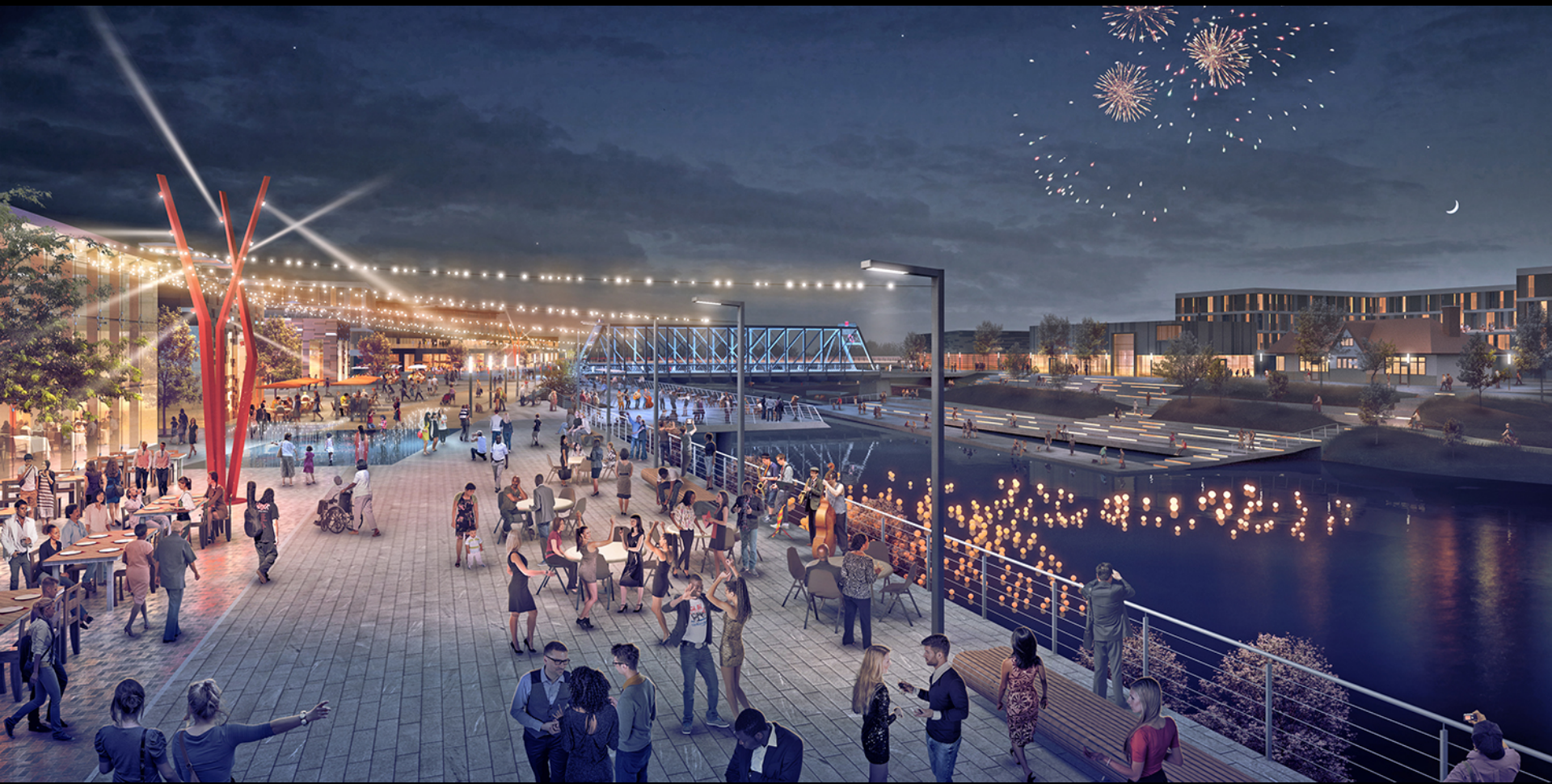
MAIN

ST. JOSEPH RIVER

ST. MARYS RIVER









COME FOR THE DASH STAY FOR THE COCOA



2015 FORT WAYNE
RED DRESS
DASH



FEBRUARY 7 @ 1:00
REGISTRATION @ 12:30
HEADWATERS PARK --> WELLS STREET BRIDGE



facebook.com/ahafortwayne



EVELYN'S PARK



AERIAL VIEW



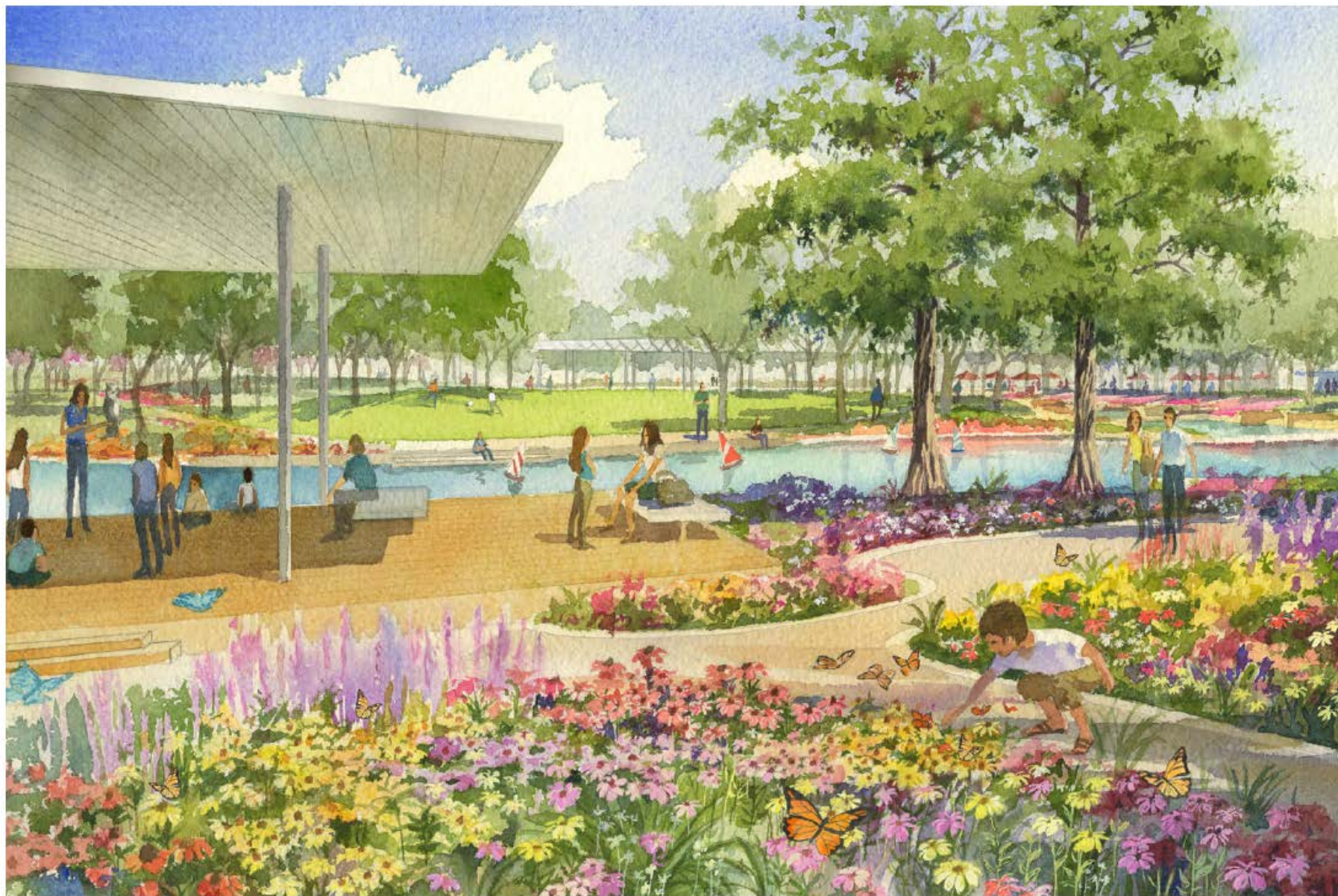
View North from Bellaire Boulevard

EVENT LAWN



View East to Cypress Lake and Community Lawn

BUTTERFLY GARDEN



View South to Community Lawn



For more information
visit
evelynspark.org



Dinner in the Park

Food Truck

EVELYN'S
PARK

WEDNESDAYS

STARTING
MARCH 18

evelynspark.org 4:30-7:30pm



BATON ROUGE LAKES



1929 View of City Park Lake
(Pre-University Lake)



WEEK 1 2 3 4 5 6 7 8 9 10 11 12 13 14 15 16 17 18 19 20 21 22 23 24 25 26 27 28 29 30 31 32 33 34 35 36 37 38 39 40

1. ANALYZE EXISTING CONDITIONS

2. PUBLIC ENGAGEMENT

3. CONDUCT NEEDS ASSESSMENT

4. MASTER PLANNING

5. IMPLEMENTATION STRATEGY

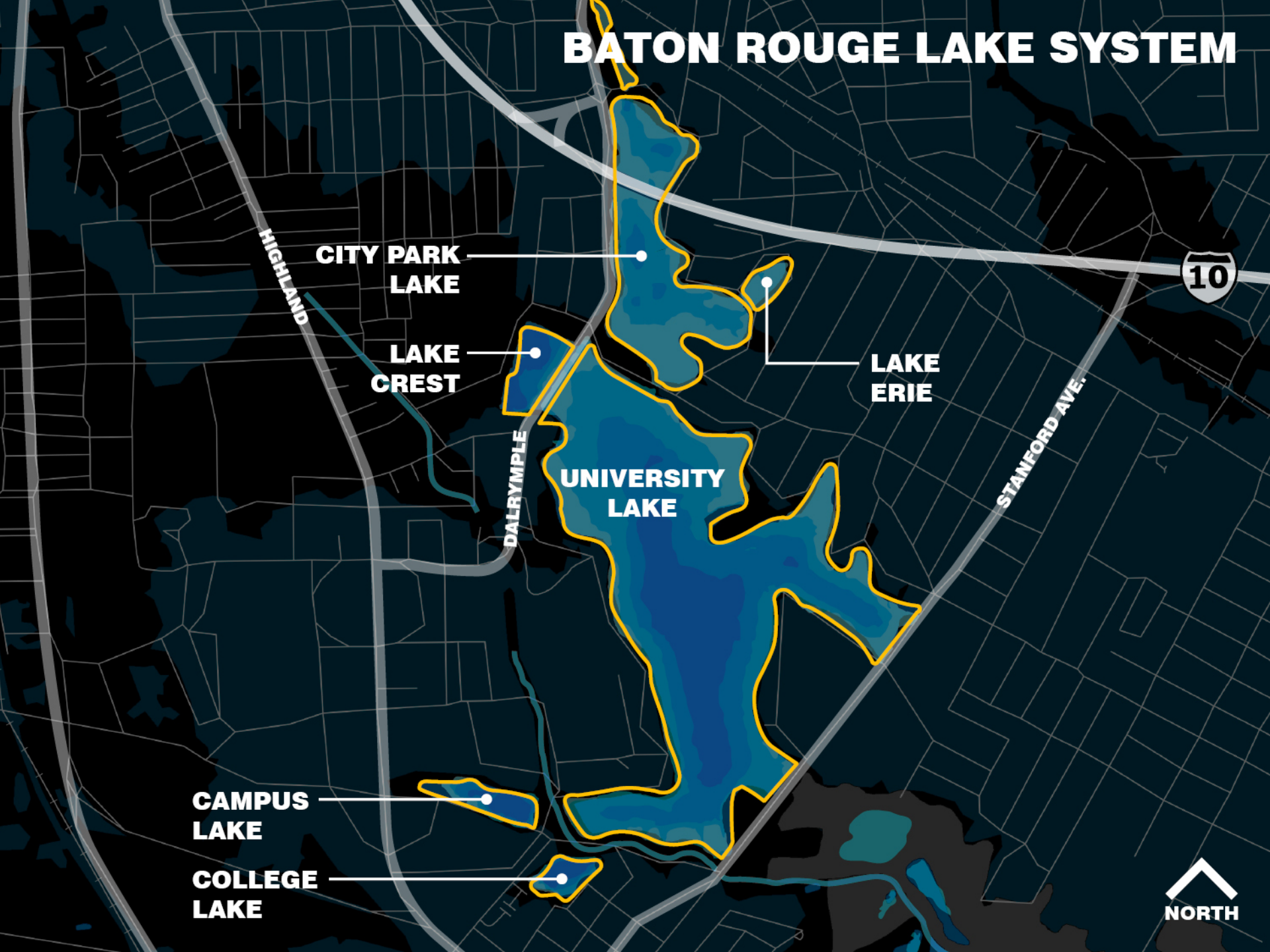
1 2 3 4 5



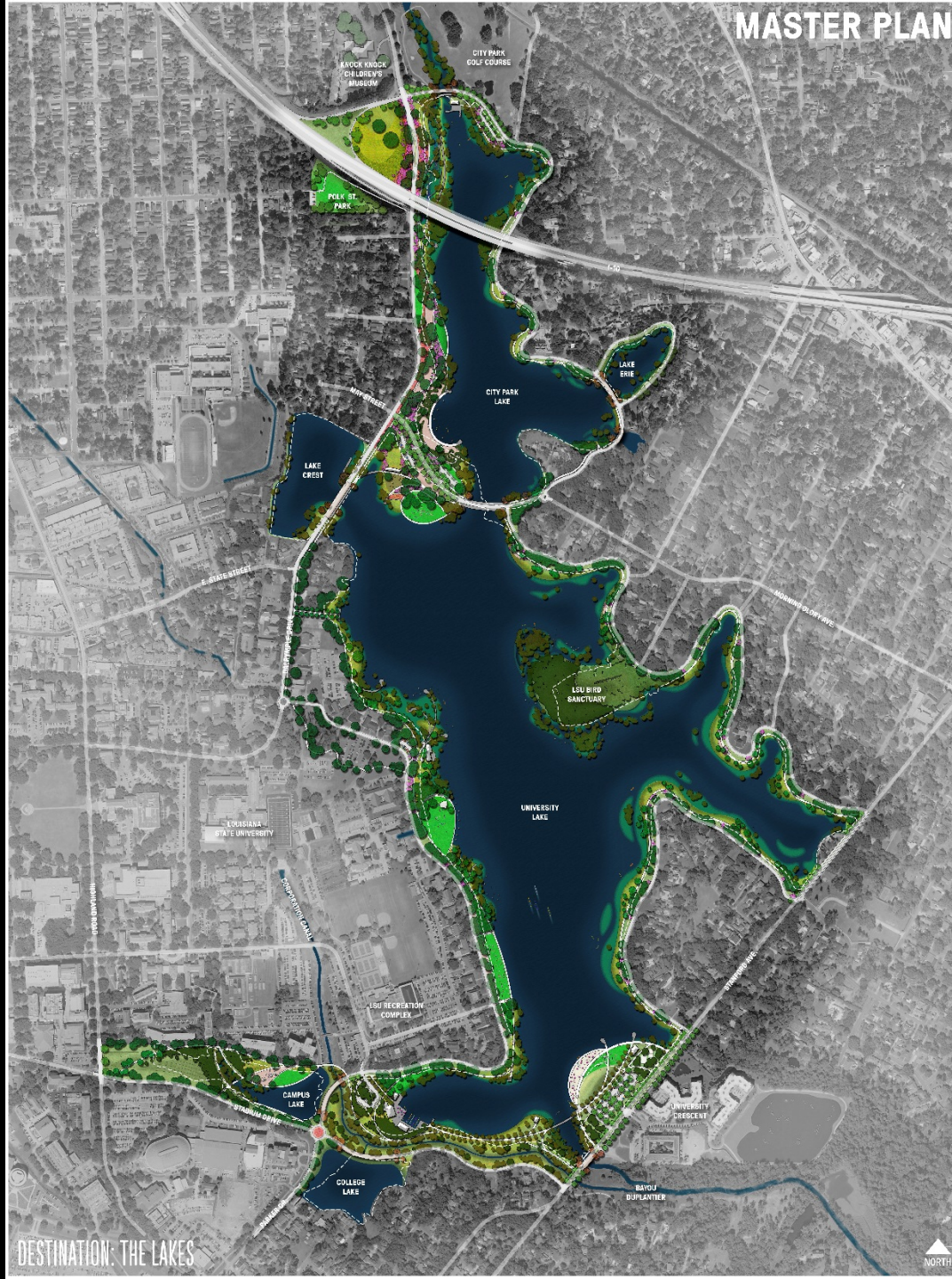
A woman in a white shirt and a man in a dark suit stand next to a presentation board titled "landscape design". The board displays a site plan with green spaces and various images of landscape architecture.



BATON ROUGE LAKE SYSTEM



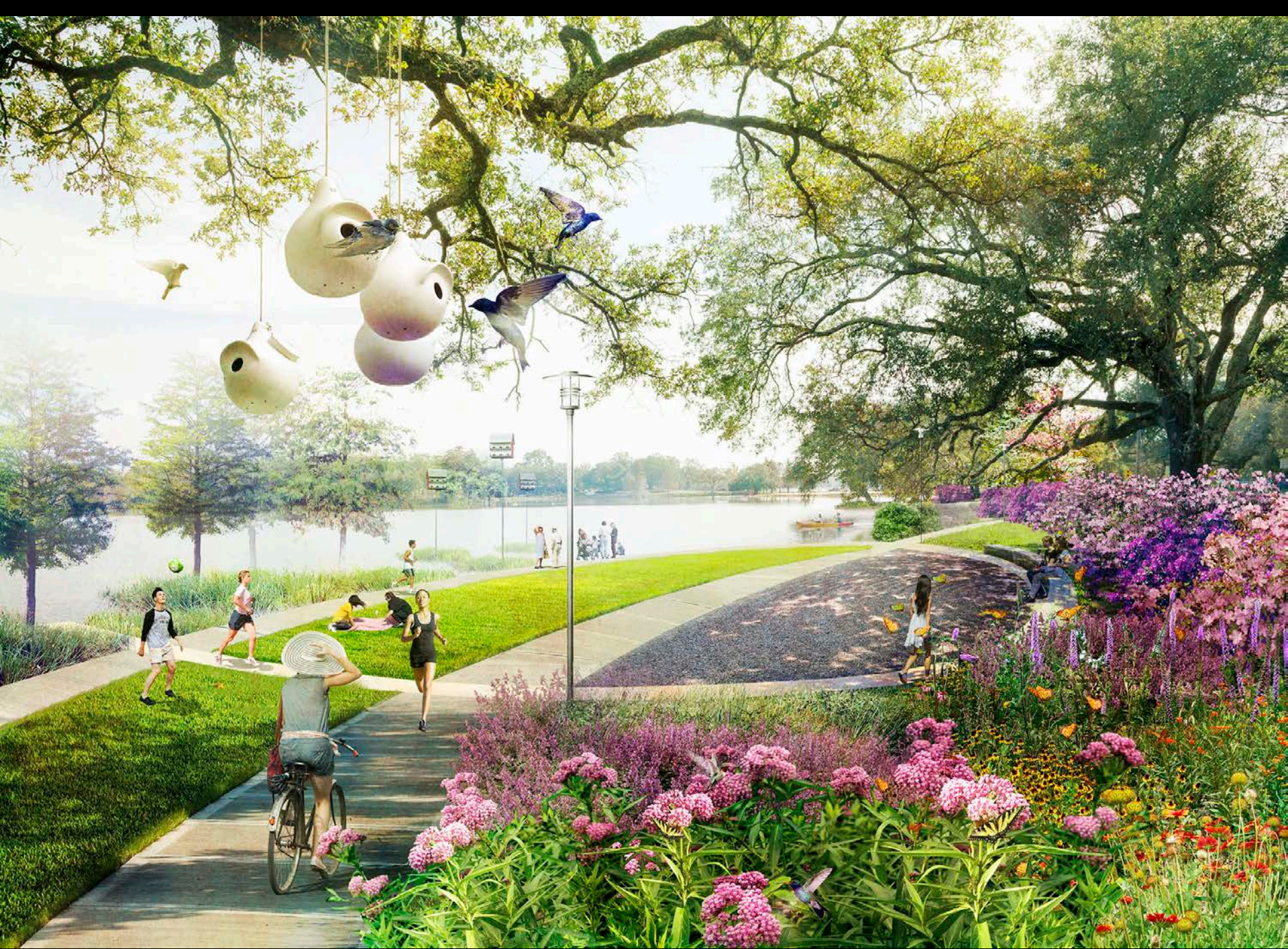
MASTER PLAN

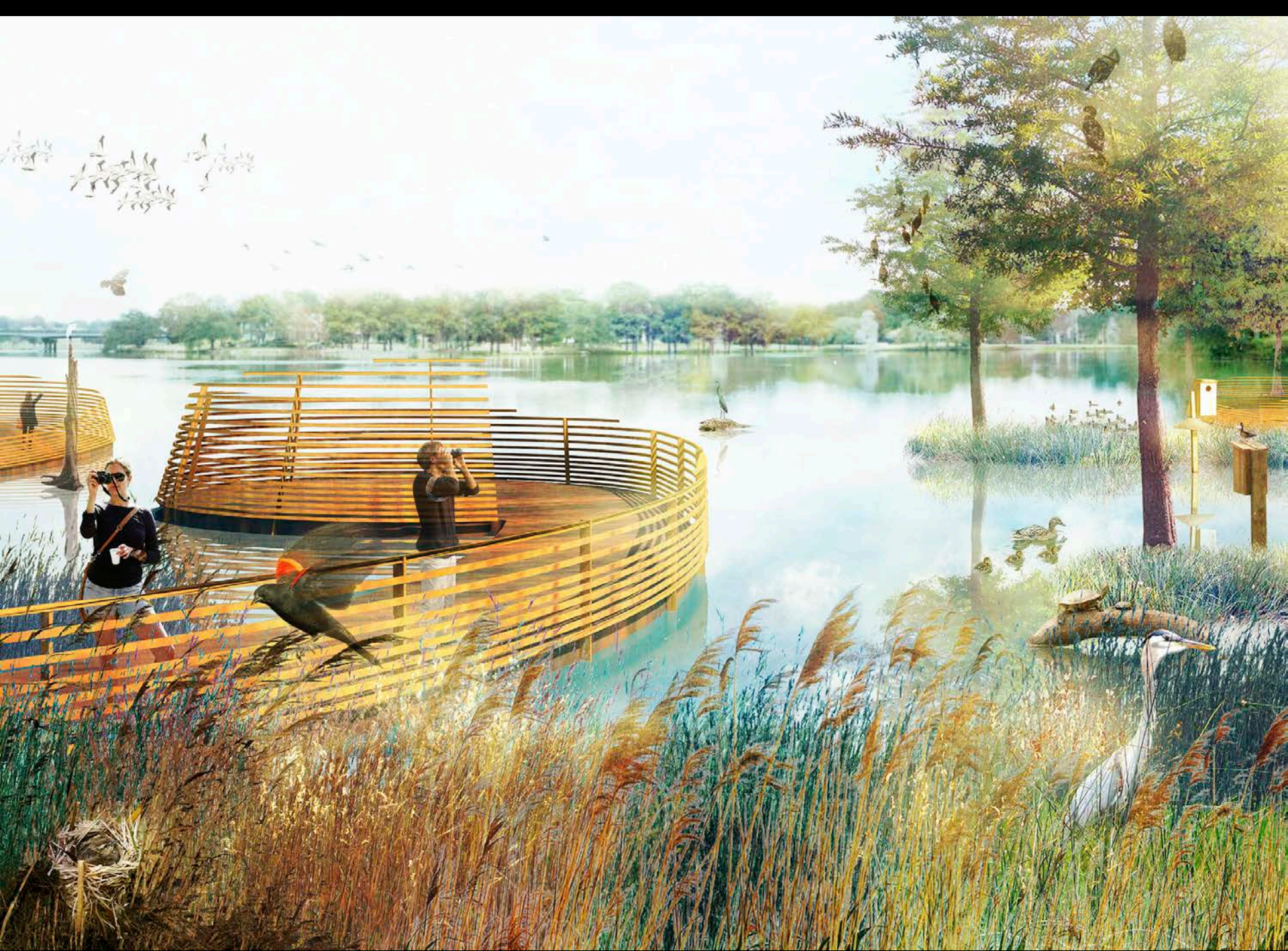


DESTINATION: THE LAKES



CITY PARK LAKE





BATON ROUGE LAKES

PADDLEBOARD ZEN



BATON ROUGE LAKES PROMENADE



BATON ROUGE LAKES

GATEWAY BRIDGE



BATON ROUGE LAKES SCIENCE ECO-TRAIL





BATON ROUGE LAKES
KAYAK ANGLING

BATON ROUGE LAKES
BOATHOUSE CAFE



BATON ROUGE LAKES TRAIL CIRCUIT







PADDLE BOARD POP-UP SHOPS





WOODEN BOAT SHOW





RED STICK BOOT CAMP



PORCH SWING GROVE





STUMP THING

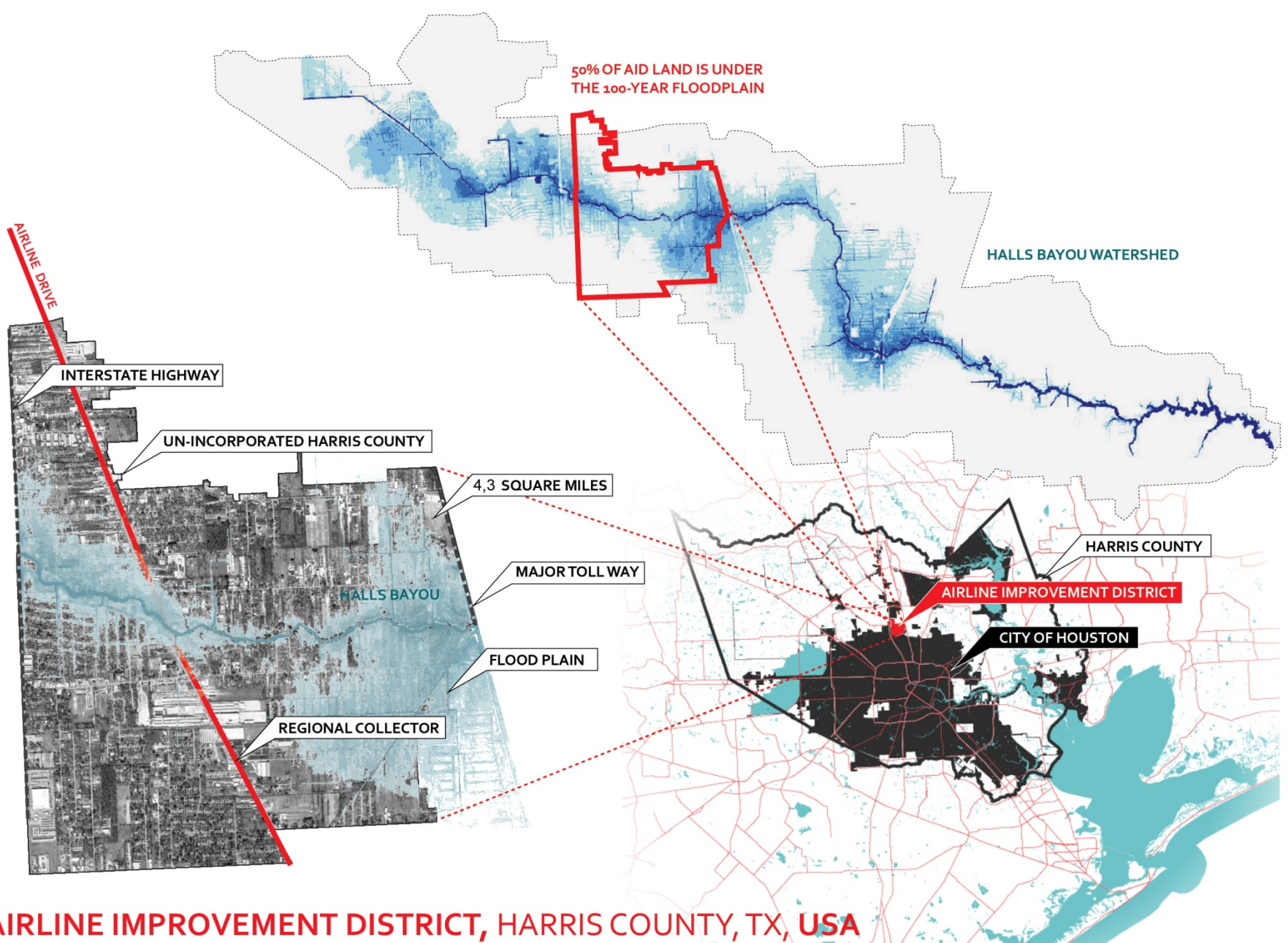




LAKE BOTTOM EVENTS



MOBILE INFRASTRUCTURE



AIRLINE IMPROVEMENT DISTRICT, HARRIS COUNTY, TX, USA

1

The Airline Improvement District is on the northern edge of the City of Houston. With infrastructure hurdles preventing market-rate development for the foreseeable future, the planning challenge is to leverage limited community resources towards the improvement of livability in the District.



- residential lots
- vacant lots
- 100-year flood plain
- 500-year flood plain
- on-site water system (well, septic)
- hazardous soil conditions
- J junk yard
- L land fill

INADEQUATE POLICE PROTECTION



UNDERUTILIZED VACANT LAND



LACK OF COMMUNITY RESOURCES



POOR STREET CONNECTIVITY



UNDERFUNDED STREETScape



LACK OF NEW DEVELOPMENT



ENVIRONMENTAL POLLUTION



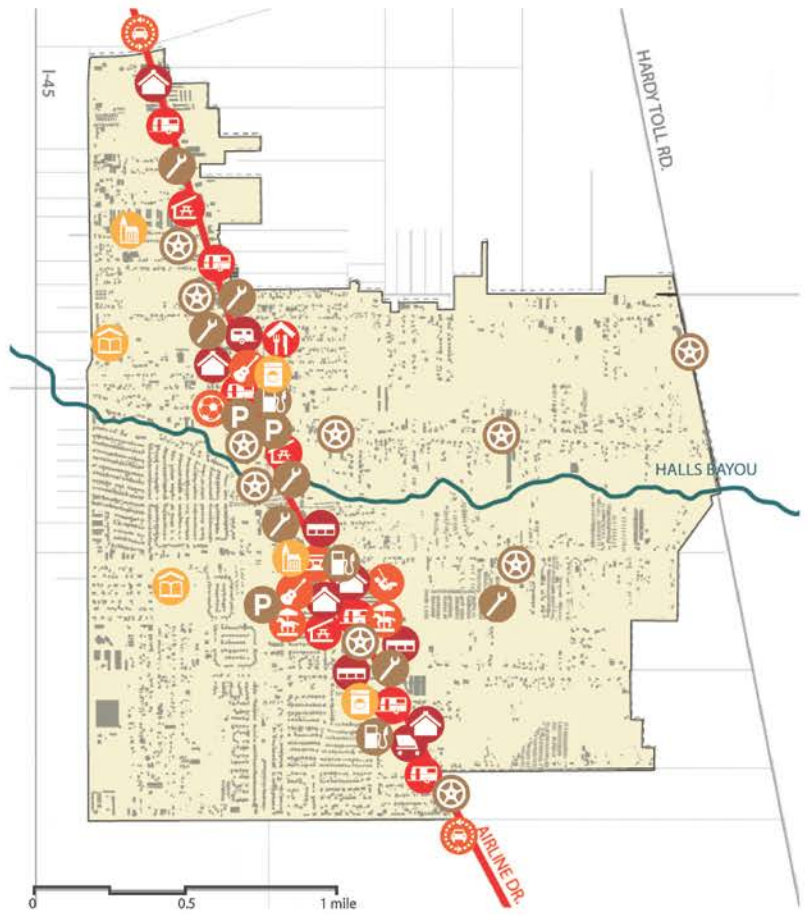
UNSAFE PEDESTRIAN REALM



3 Poor water and road infrastructure, as well as repeated flood events limit incentives to build homes or commercial centers in the District. Planning will build upon the positive community aspects to create a network that can lobby for change.

COMMUNITY ON THE MOVE

A FUNCTIONAL LIVABLE CENTER



- | | | | | | | | | | | | |
|------------|-------------|---------------|--------------|----------------|-------------|-------------|--------------|----------|------------------|---------------|----------|
| strip mall | flea market | mobile retail | restaurant | outdoor picnic | mobile food | play area | sports field | carousal | live music venue | playing music | the drag |
| school | church | laundymat | auto-service | auto retail | parking | gas station | | | | | |

DISTRICT-UNIFYING COMMERCIAL SPINE



SYMBIOTIC BUSINESS RELATIONSHIPS



SMALL ENTREPRENEURSHIP



MOBILE FOOD AND RETAIL



REGIONAL SHOPPING DESTINATION



VIBRANT FOOD CULTURE

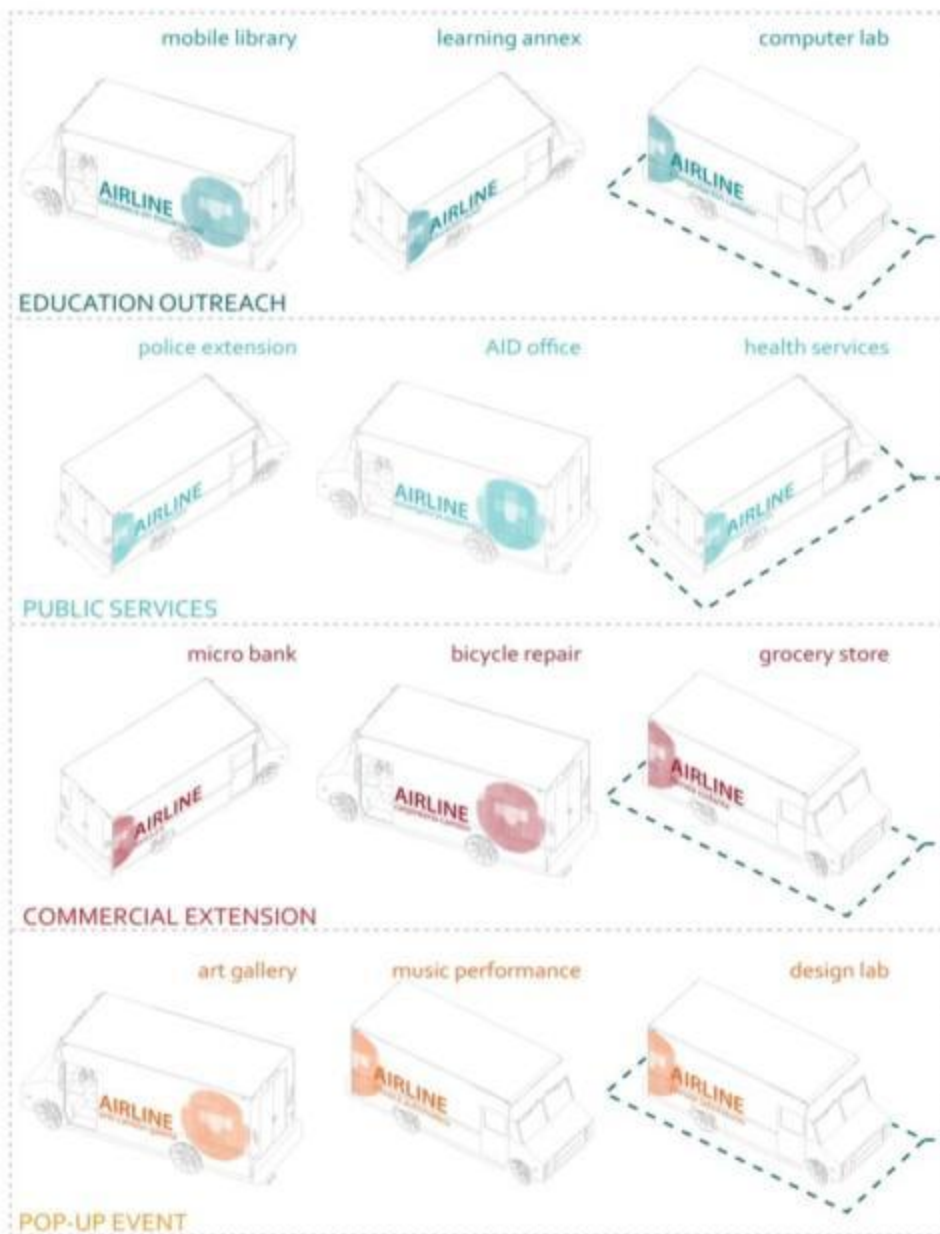


ARTFUL EXPRESSION IN LANDSCAPE

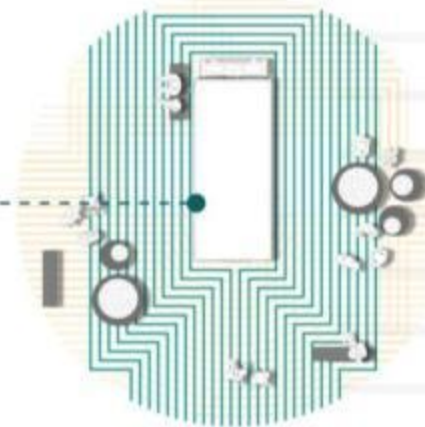


FAMILY-CENTRIC COMMUNITY

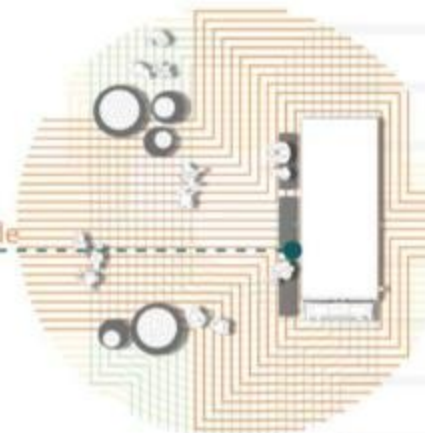




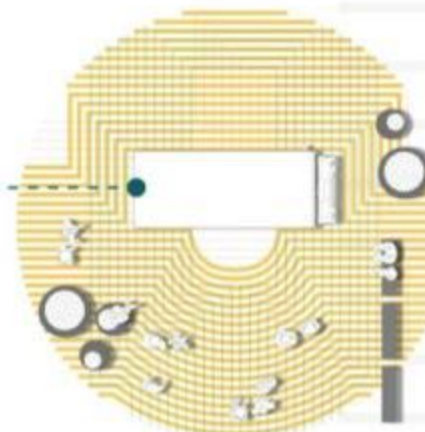
pockets



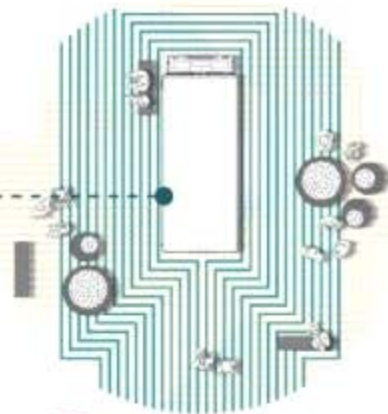
promenade



event

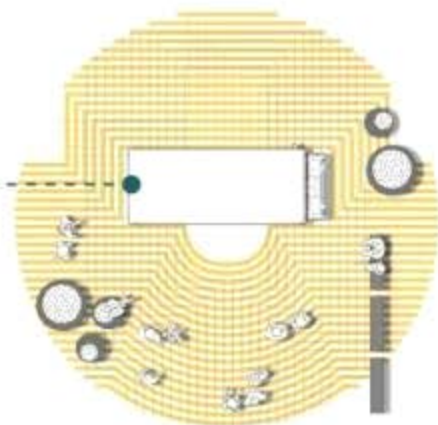


ALONG COMMERCIAL SPINE IN CLOSE PROXIMITY TO RESIDENTIAL AREAS

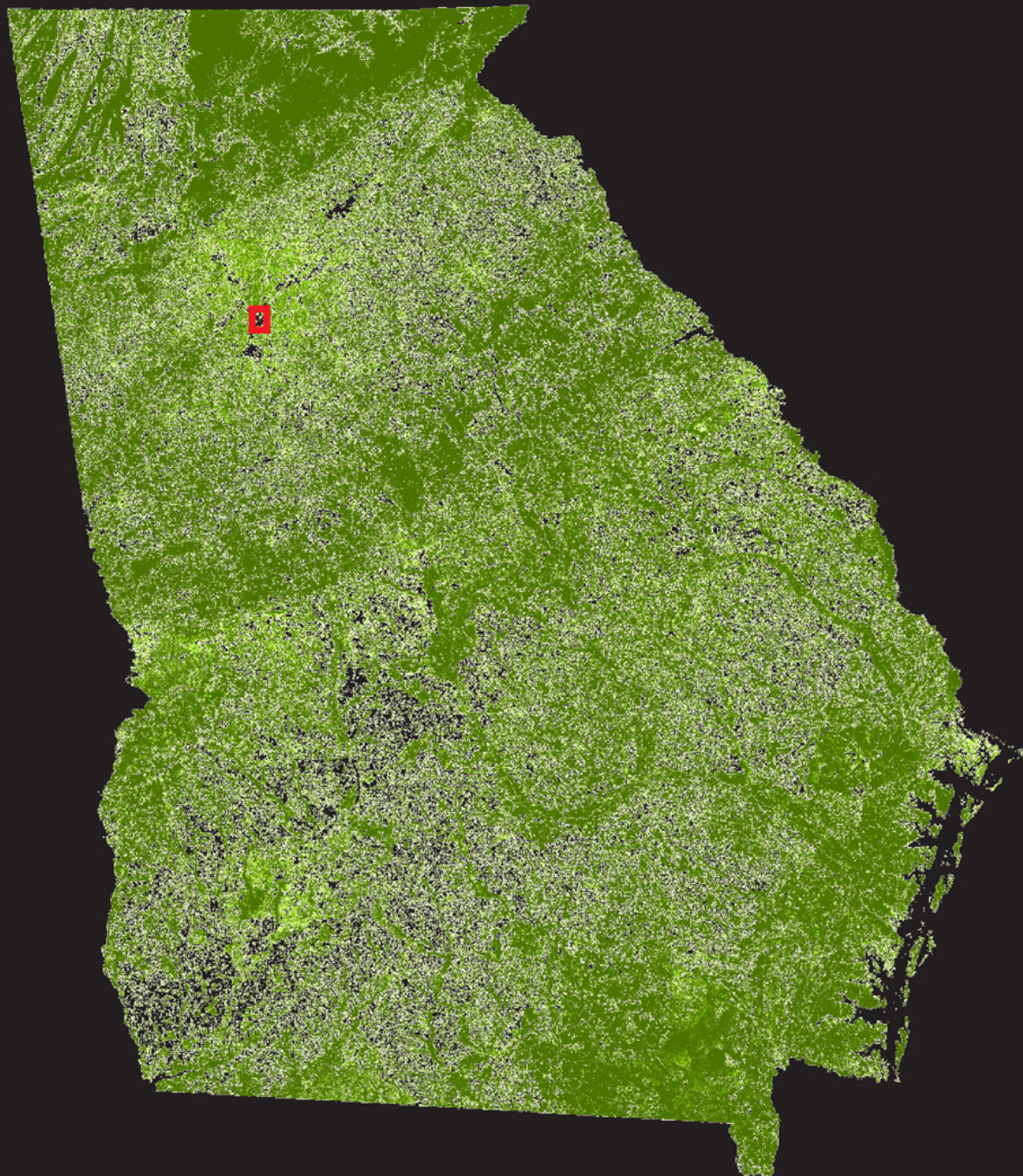


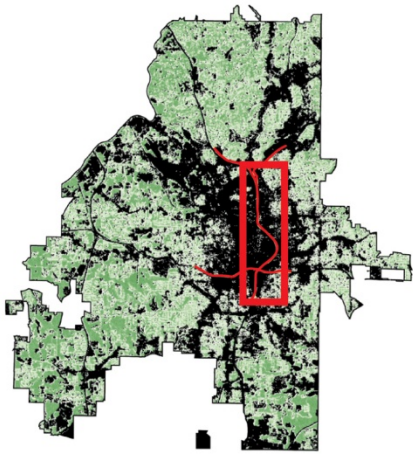
CULTURAL-COMMERCIAL EXTENSION

POTENTIAL SITES OF MCI DEPLOYMENT:
FLEA MARKETS AND CONGREGATION AREAS



MOFA

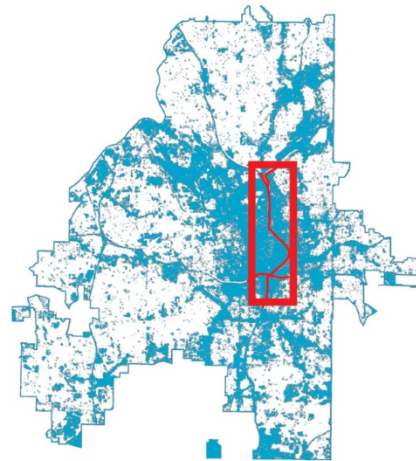




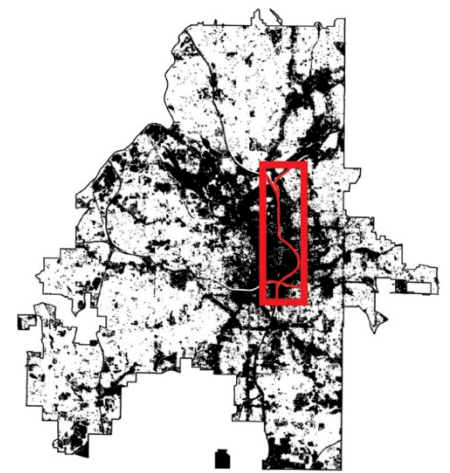
DECLINING TREE CANOPY



8 DEGREES HEAT ISLAND EFFECT



1,9 BILLION GALLONS OF STORM WATER



300,000 METRIC TONS OF CARBON EMISSIONS

340,000 CARS PER DAY

NEGATIVE IMPRESSION OF THE CITY

DETACHED NEIGHBORHOODS

SEVERED PEDESTRIAN CONNECTIONS

2

The Connector's heat island, storm water, particulate matter, and carbon emissions create serious environmental issues for Atlanta, while the declining tree canopy negatively affects the environment as well as Atlanta's identity of the "City in a Forest".

RE-GREEN

90,000 TREES

170 ACRES
OF URBAN FOREST

6 ACRES
OF PAVEMENT CONVERTED
TO URBAN FOREST

400,000 GALLONS
OF STORMWATER REDUCED

24,000 METRIC TONS
OF CARBON SEQUESTERED

4 DEGREES
REDUCTION OF LOCALIZED URBAN HEAT
ISLAND EFFECT

PSYCHOLOGICAL BENEFIT TO THE DRIVERS,
PEDESTRIANS

IMPROVED CITY IMAGE

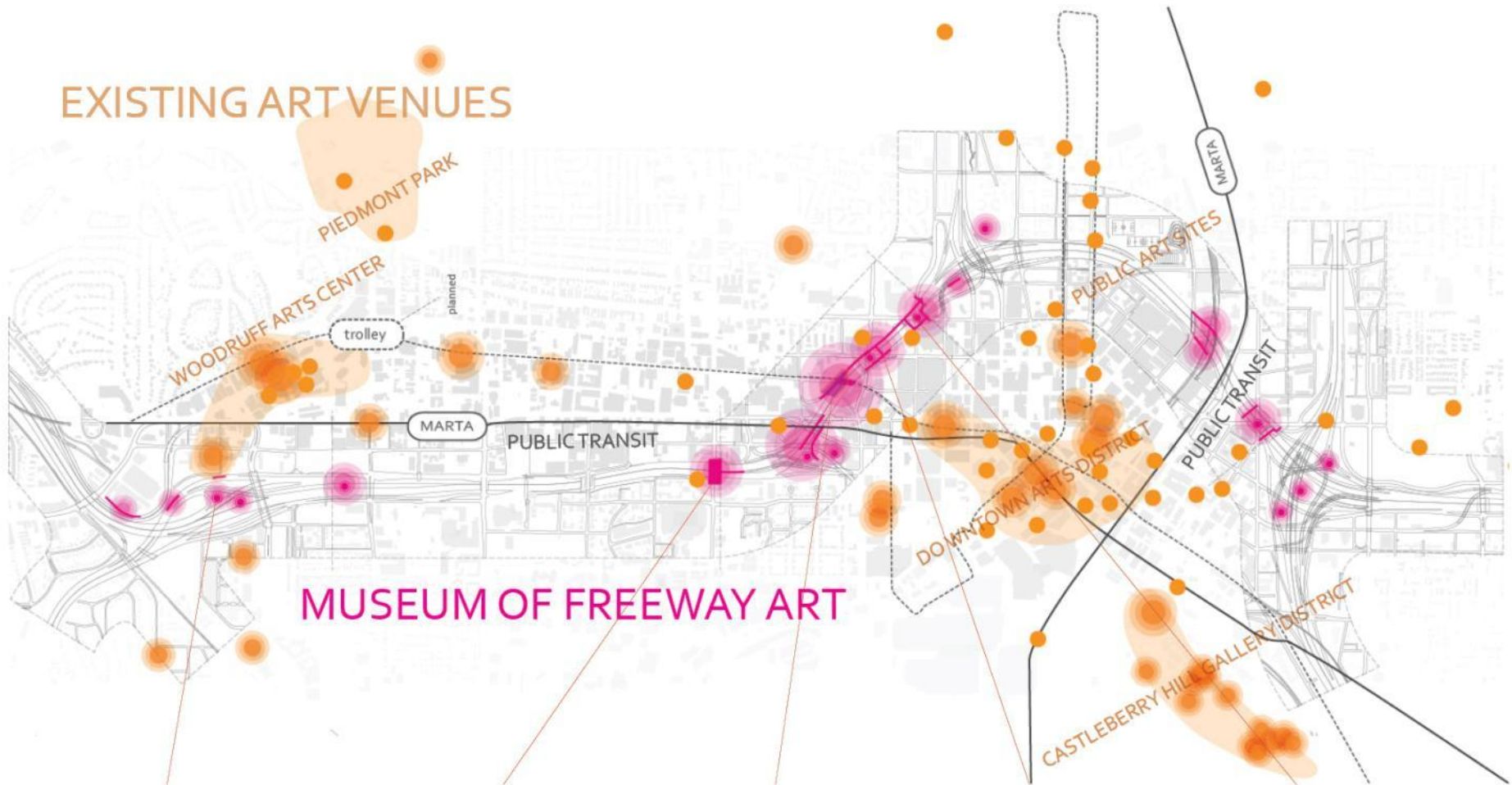
13,651,000

THE NUMBER OF TREES NEEDED TO CARBON-OFFSET THE 5-MILE
CONNECTOR, EQUIVALENT OF 1.65 ATLANTAS PLANTED WITH TREES



5 The Connector will remain Atlanta's most defining piece of infrastructure for the foreseeable future. Using environmental metrics as a point of departure, a transformation strategy is devised that looks at the Connector in context of the greater City of Atlanta.

EXISTING ART VENUES



MUSEUM OF FREEWAY ART

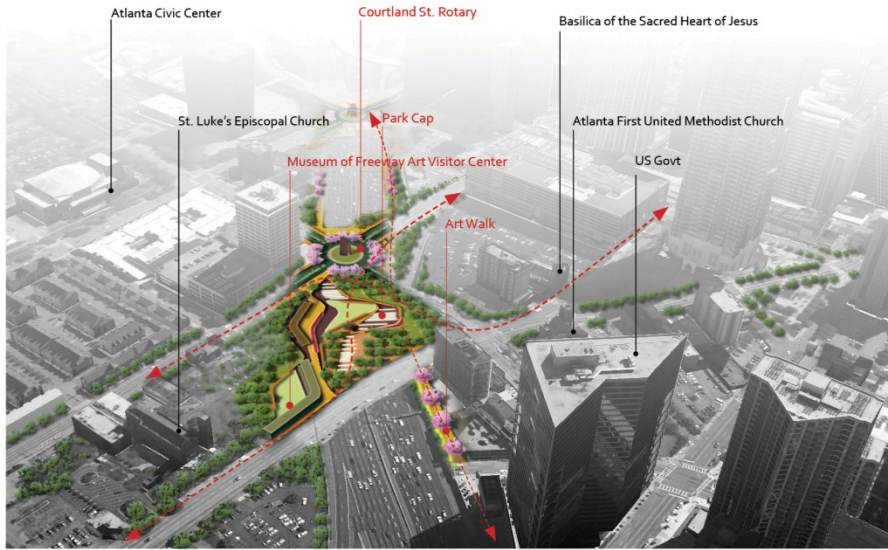




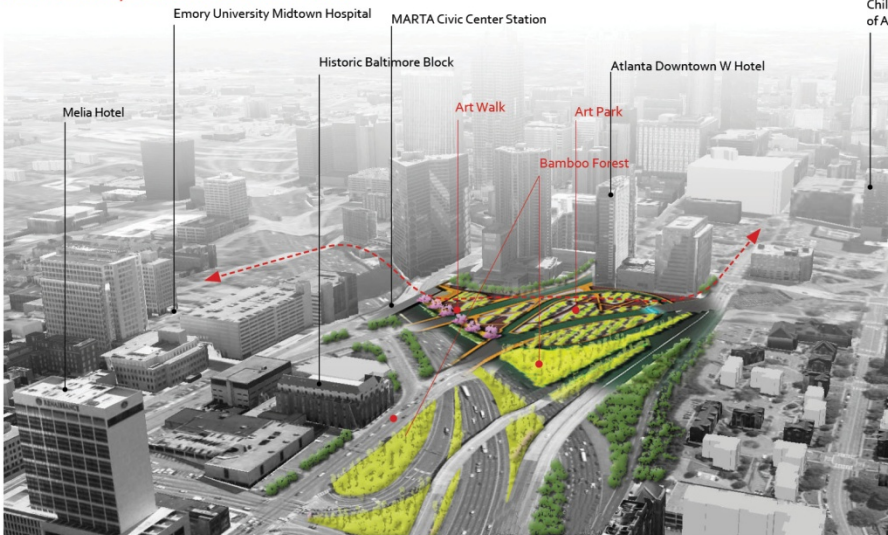
- 11** By combining the architecture of the Connector with super graphic art, the City and the Connector merge into a single composition. Travelers see the City in a new light while pedestrians socialize in outdoor galleries above the freeway.

RE-CONNECT

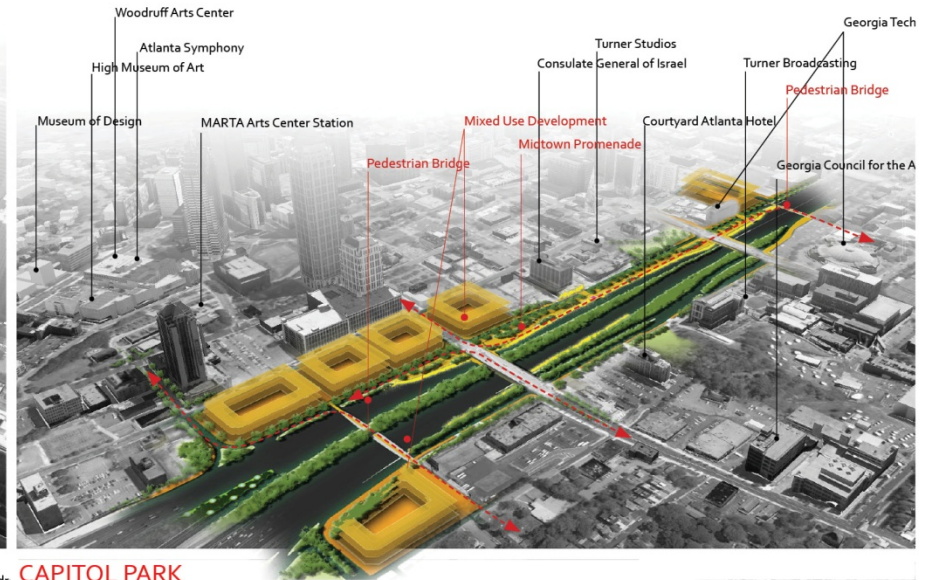
MAYOR'S PARK



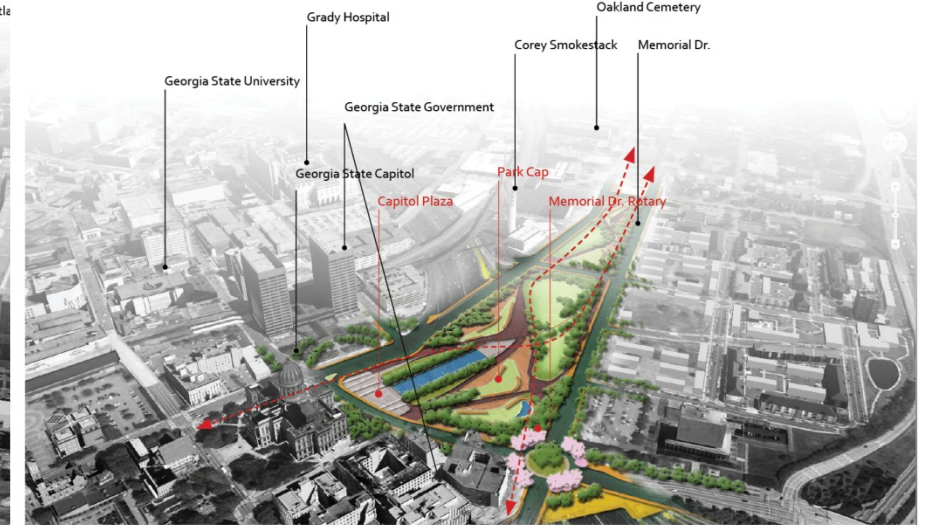
ART PARK / BAMBOO GATEWAY



MIDTOWN PROMENADE



CAPITOL PARK



15 Over time, new urban spaces will be created to take advantage of the Connector and the MoFA. Urban parks, promenades, trails, pedestrian bridges and development projects are the envisioned urban insertions that will make new connections and reinvigorating old ones.

MoFA: THE GREEN SPECTACLE



7

Interchange spaces are converted to forest gateways planted with native and exotic species in legible design forms. Porous spaces along the Connector's margins increase canopy, habitat, continuity, and identity. Vertical structures use vine walls to maximize greening.







RELIANT PARK

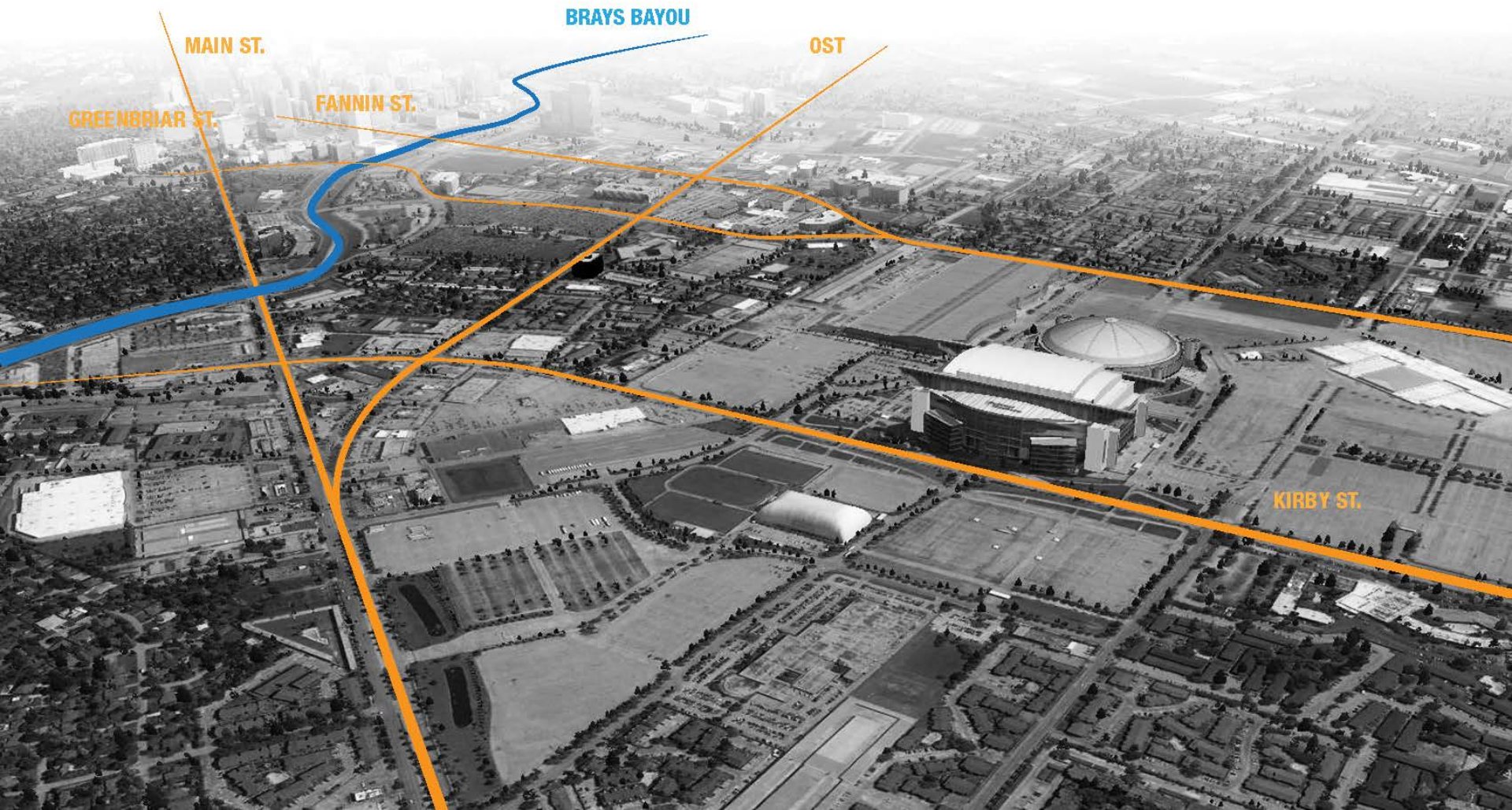
STADIUM PARK ENHANCEMENTS

DESIGN IDEAS 10.27.2014



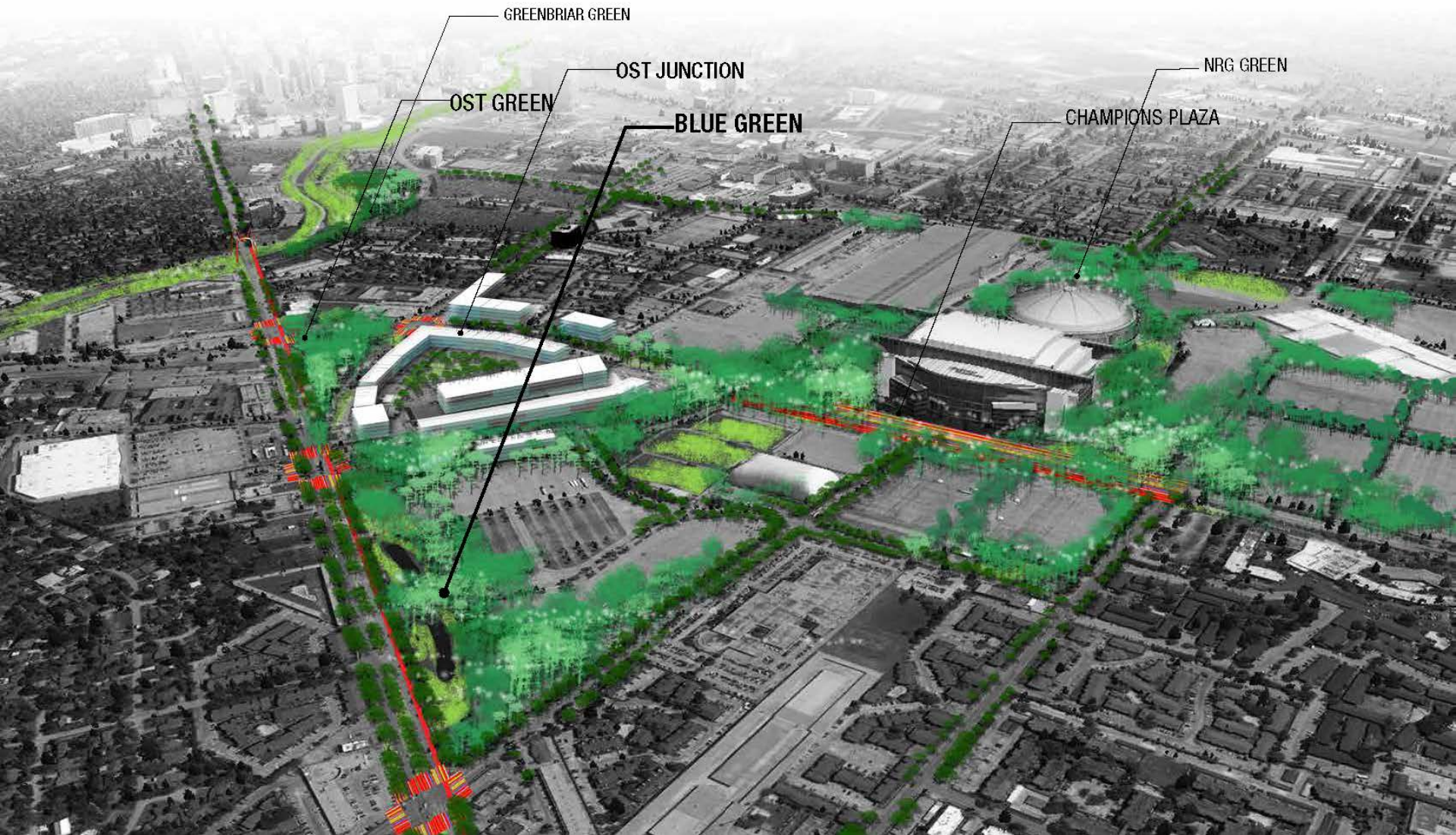
BIG PROBLEMS OF “PARKING URBANISM”

swa

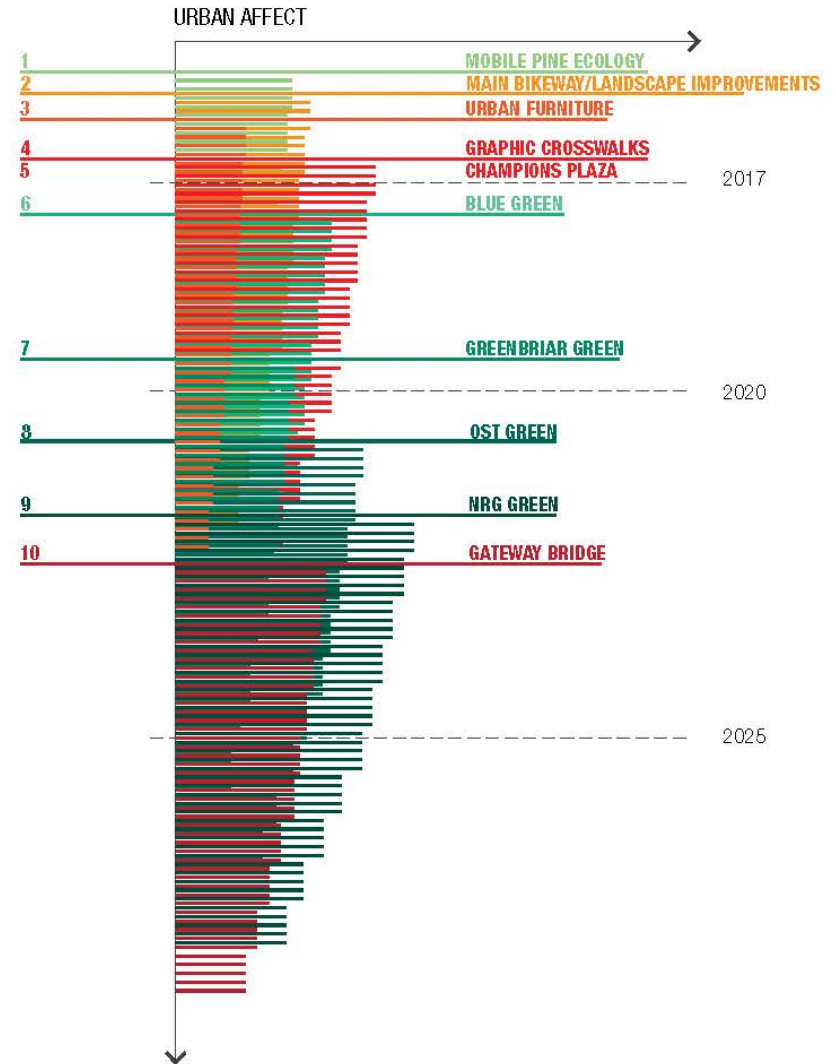
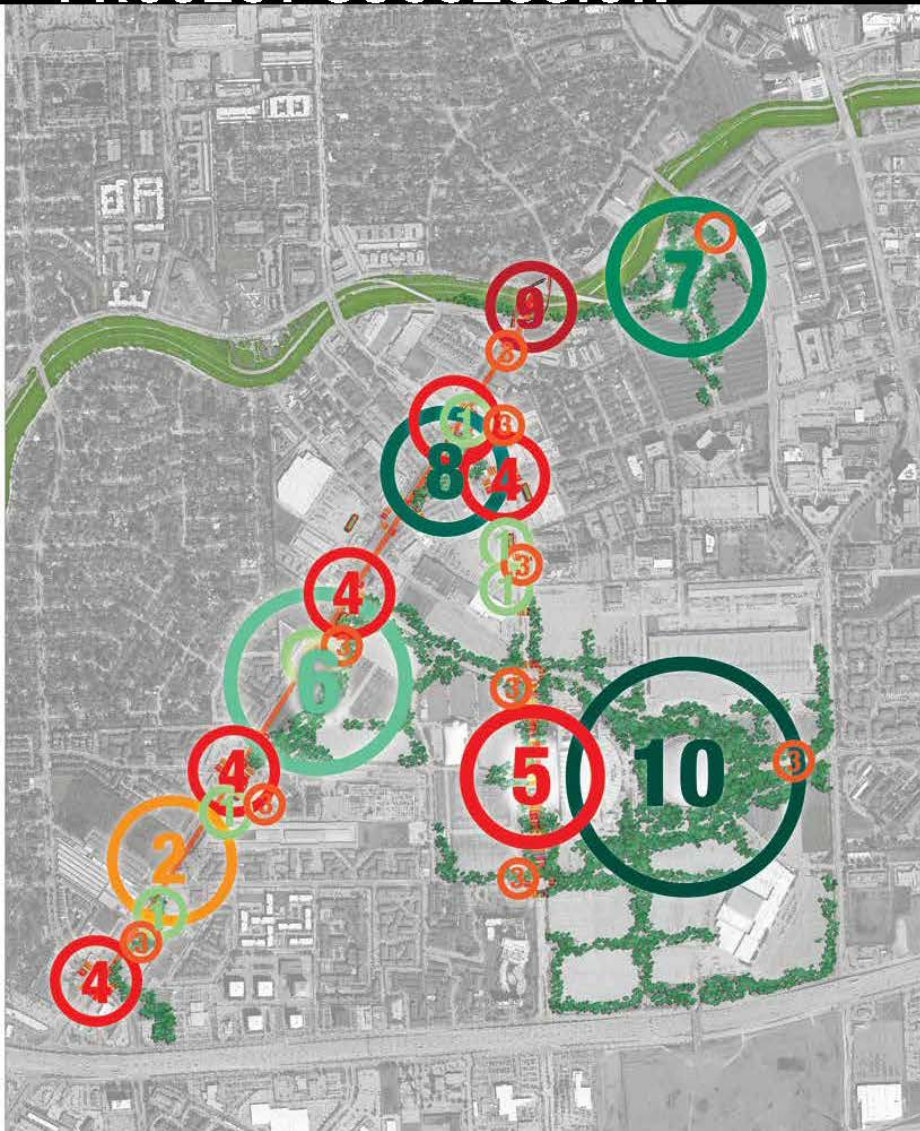


BIG VISION: THE PARK

swa



PROJECT SUCCESSION



MOBILE PINE ECOLOGY

swa



ICONIC DISTRICT GATEWAY

swa



BETTER BLOCKS





