

August 1, 2024

# H-GAC ITS Architecture and Website Update

## H-GAC TSMO Committee Briefing

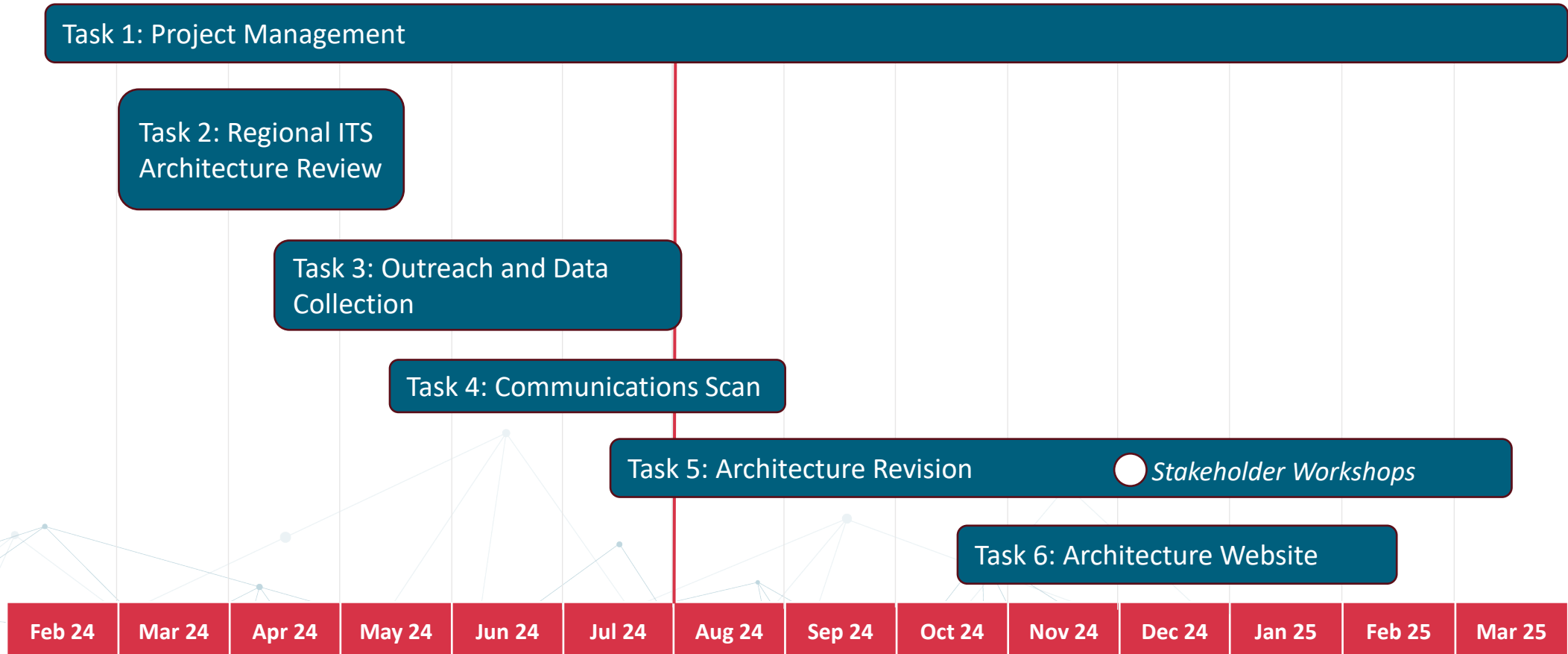


# Project Goals

## H-GAC ITS ARCHITECTURE AND WEBSITE UPDATE

1. Update the **existing H-GAC Regional ITS Architecture** to the current National ITS Architecture (Version 9.2)
2. Develop an ITS inventory software analysis tool that will **assist in transportation project prioritization**, benefit cost analysis, and economic impact analysis
3. Update and advance the existing Transportation Systems Management and Operations (TSMO) website
4. Create a **Geographic Information System (GIS) database of all ITS and signal fiber in the eight-county MPO**
5. Develop a standard method for collecting inventories and implementation plans from each stakeholder agency
6. Meet with all **eight counties and in the region (and cities)** to verify existing inventory and obtain plans for new ITS, signals, TMCs, and other deployments to be implemented over the next seven years
7. Meet with the **TxDOT Houston and Beaumont Districts** to inventory all existing ITS, signal, and tolling facilities and document their implementation plans for the next seven to 10 years
8. Determine which **cities will potentially surpass 50,000 residents** in the 2030 Census **and meet with them** to document their existing ITS and signal inventories and implementation plans leading up to 2030
9. Meet with all **Toll Authorities** in the MPO to inventory all existing ITS, signal, and tolling facilities and document the implementation plans for each for the next seven to 10 years

# Key Tasks and Timeline



# Stakeholder Agencies

H-GAC Counties	H-GAC Cities	Regional Agencies
Brazoria <i>(Includes Toll Road Authority)</i> Chambers Fort Bend <i>(Includes Toll Road Authority and Transit)</i> Galveston Harris <i>(Includes Toll Road Authority)</i> Liberty Montgomery <i>(Includes Toll Road Authority)</i> Waller	Baytown Conroe Galveston Houston League City Missouri City Pasadena Pearland Sugar Land Texas City	Brazos Transit District Harris County Regional Transit Authority Houston Metro Port of Freeport Port of Houston TxDOT Beaumont District TxDOT Houston District Uptown TIRZ The Woodlands Regional Transit Authority



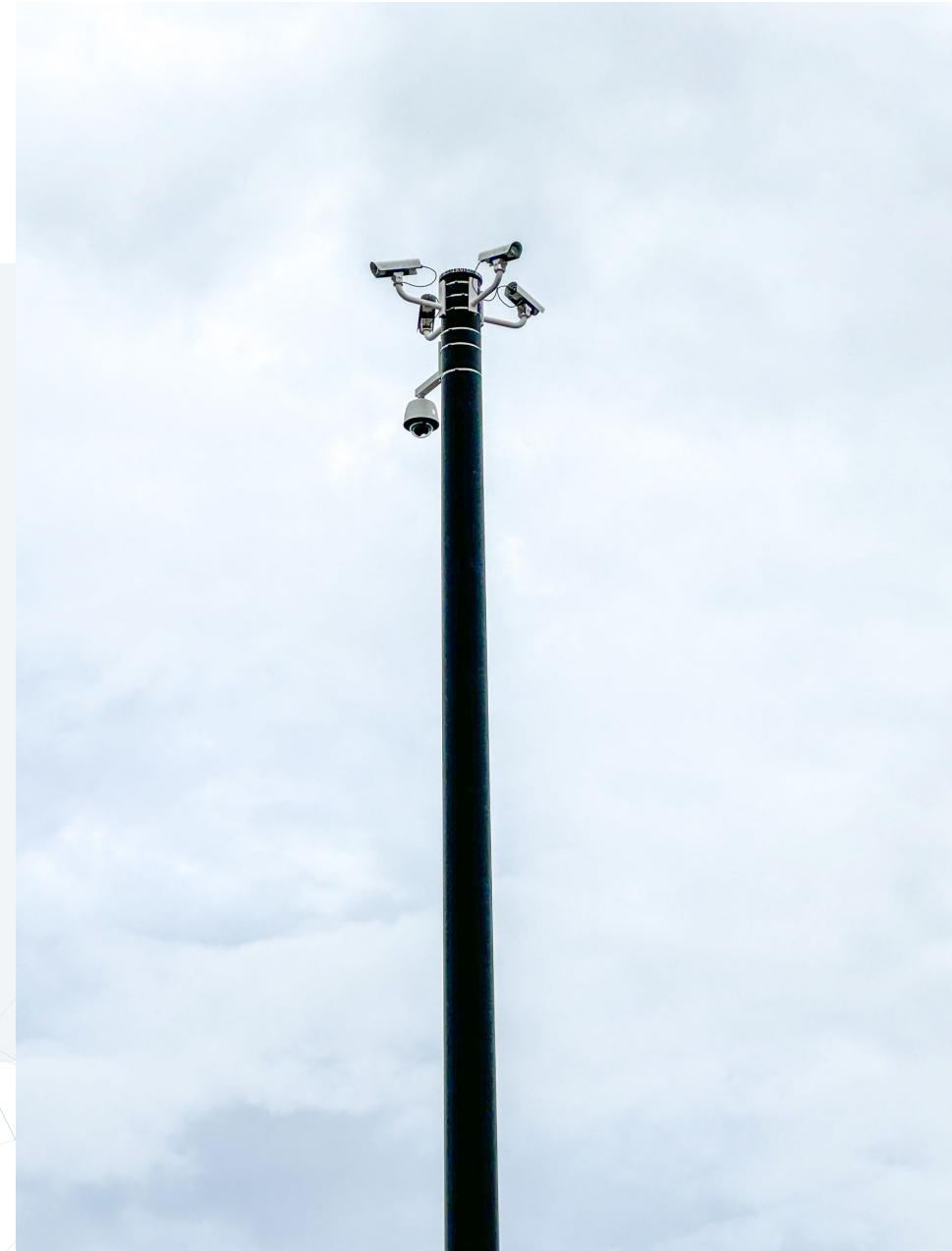
# Stakeholder Agencies Interviewed Thus Far

H-GAC Counties	H-GAC Cities	Regional Agencies
<b>Brazoria</b> <i>(Includes Toll Road Authority)</i> <b>Chambers</b> <b>Fort Bend</b> <i>(Includes Toll Road Authority and Transit)</i> <b>Galveston</b> <b>Harris</b> <i>(Includes Toll Road Authority)</i> Liberty <b>Montgomery</b> <i>(Includes Toll Road Authority)</i> <b>Waller</b>	Baytown Conroe Galveston <b>Houston</b> <b>League City</b> <b>Missouri City</b> Pasadena <b>Pearland</b> <b>Sugar Land</b> <b>Texas City</b>	Brazos Transit District Harris County Regional Transit Authority <b>Houston Metro</b> <b>Port of Freeport</b> <b>Port of Houston</b> <b>TxDOT Beaumont District</b> <b>TxDOT Houston District</b> Uptown TIRZ <b>The Woodlands Regional Transit Authority</b>

*Interview Complete*  
*Interview Being Scheduled*  
*Formal Interview Declined*

# Stakeholder Input

## Inventory Needs



# Inventory

## Traffic Management

---

Closed Circuit Television Cameras

---

Dynamic Message Signs (Standard and Color)

---

Emergency Vehicle Preemption (GPS Based)

---

Freeway Safety Service Patrol

---

Ramp Metering

---

Smart Work Zones

---

Toll Lanes

---

Traffic Management Centers

---

Traffic Signal Operations

---

Truck Parking Availability Systems

---

Wrong-Way Driving Detection and Warning

## Transit

---

AVL Systems

---

CCTV Security Cameras

---

Mobile Ticketing Application

---

Transit Signal Priority

## Data/Information Mgmt

---

ConnectSmart

---

WAZE Integration

---

Clarix Video Sharing

# Regional Needs

## COMMON REGIONAL NEEDS

### Data and Information Management

- Develop data sharing agreements and expand data sharing capabilities
- Improve utilization of data through dashboards, notification, and automation
- Develop CCTV camera sharing network to share live video feeds
- Expand fiber communications network
- Share fiber network where appropriate

### Traffic Management

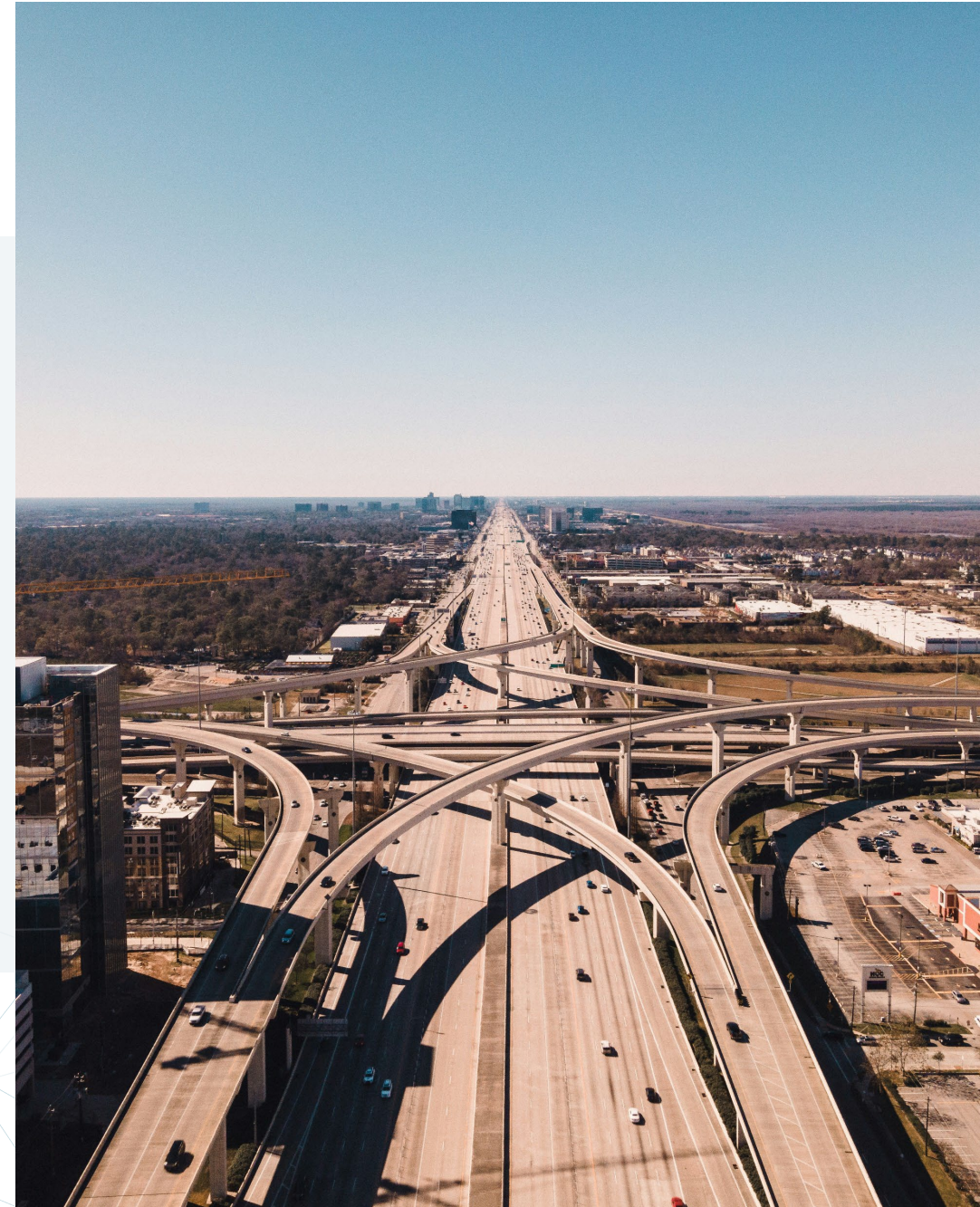
- Improve traffic signal timing and coordination between jurisdictions
- Expand the CCTV camera network
- Expand the DMS network (Including color and arterial DMS)
- Deploy railroad monitoring system that provides notification of blockages

### Weather

- Deploy road weather information systems (RWIS) for flood monitoring



# Potential ITS Focus Areas within the Region



# Potential ITS Focus Areas

## Project Deployments

Expand CCTV Camera and DMS Coverage on Freeways and Arterials

Develop Regional CCTV Camera Video Sharing System

Deploy Railroad Crossing Detection and Notification Systems

Develop Regional Transit Rider Application

Expand Fiber Optic Communication Network

## Operations and Staffing

Improve Signal Timing on Arterials and Across Jurisdictional Boundaries

Automate Operational Capabilities (Includes Data Sharing)

Increase Staffing for ITS



# CCTV Camera and DMS Coverage on Freeways and Arterials

Expand CCTV camera and DMS coverage on freeways and arterials. Provide advanced information on traffic conditions prior to freeways. Use full color DMS.

Chambers County  
TxDOT Beaumont

Project Deployment



# CCTV Camera Video Sharing System

Develop regional system to share full-motion high resolution video between all transportation agencies in the region.

League City  
Brazoria County | Chambers County  
TxDOT Beaumont | TxDOT Houston

Project Deployment





# Railroad Crossing Detection and Notification System

Improve rail detection systems and provide capability to notify drivers and emergency personnel of blockages cause by rail.

Missouri City | Pearland | Sugarland  
Fort Bend County

Project Deployment





# Regional Transit Rider Application

Regional transit application that hosts all transit information and fare payment within the H-GAC Region.

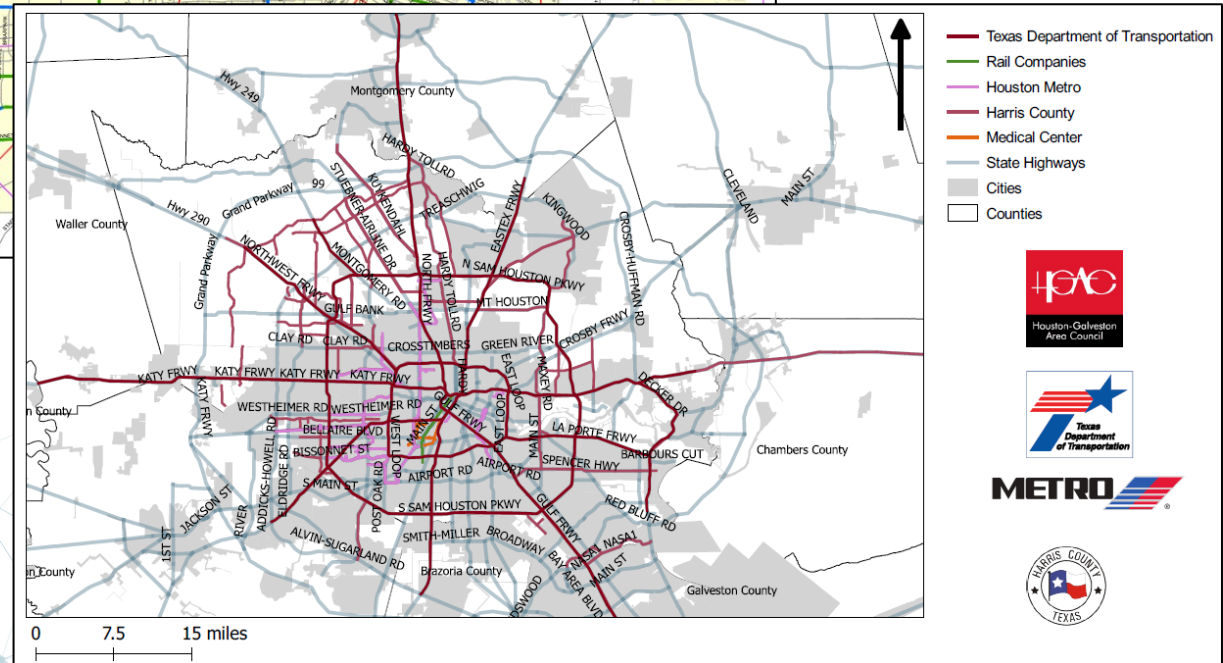
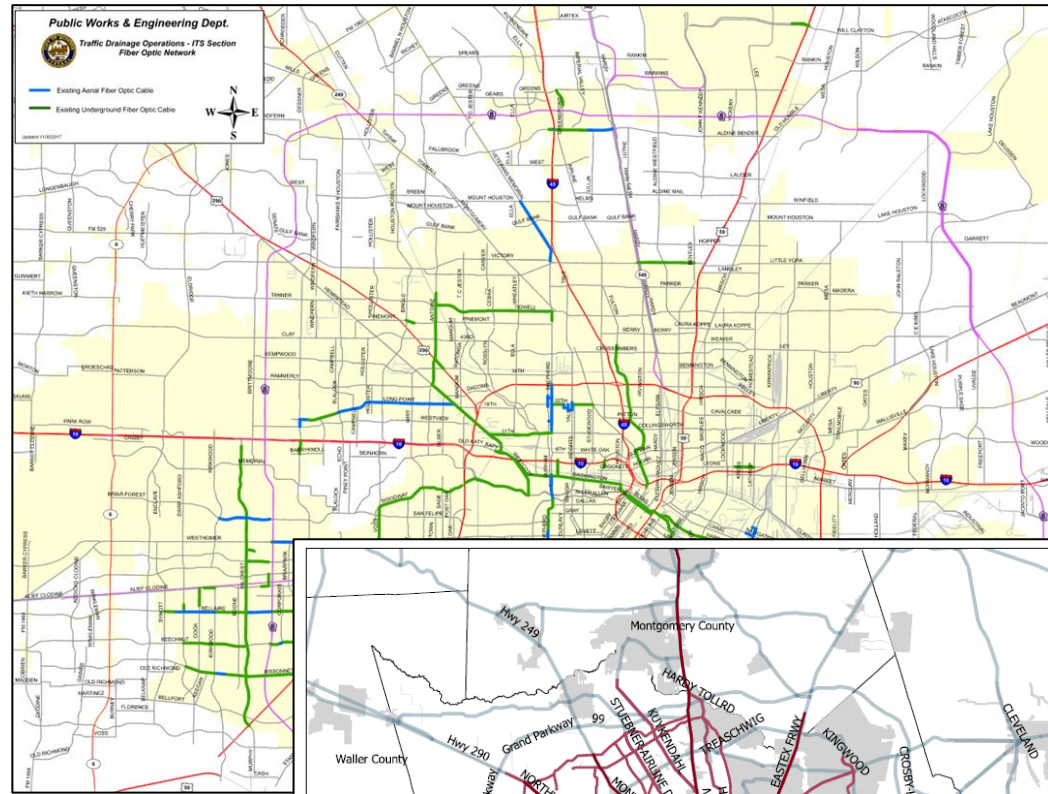
The Woodlands Regional Transit Authority

Project Deployment



# Fiber Optic Communications Network

Expand fiber optic network in the region to support high-bandwidth data needs of existing and future ITS deployments. Consider fiber sharing where feasible.



League City | Missouri City | Pearland | Sugarland  
 TxDOT Beaumont





# Signal Timing and Coordination

Improve signal timing on  
arterials and coordination  
across jurisdictional boundaries.

League City | Missouri City | Pearland  
Port of Freeport | Port of Houston

Operations and Staffing



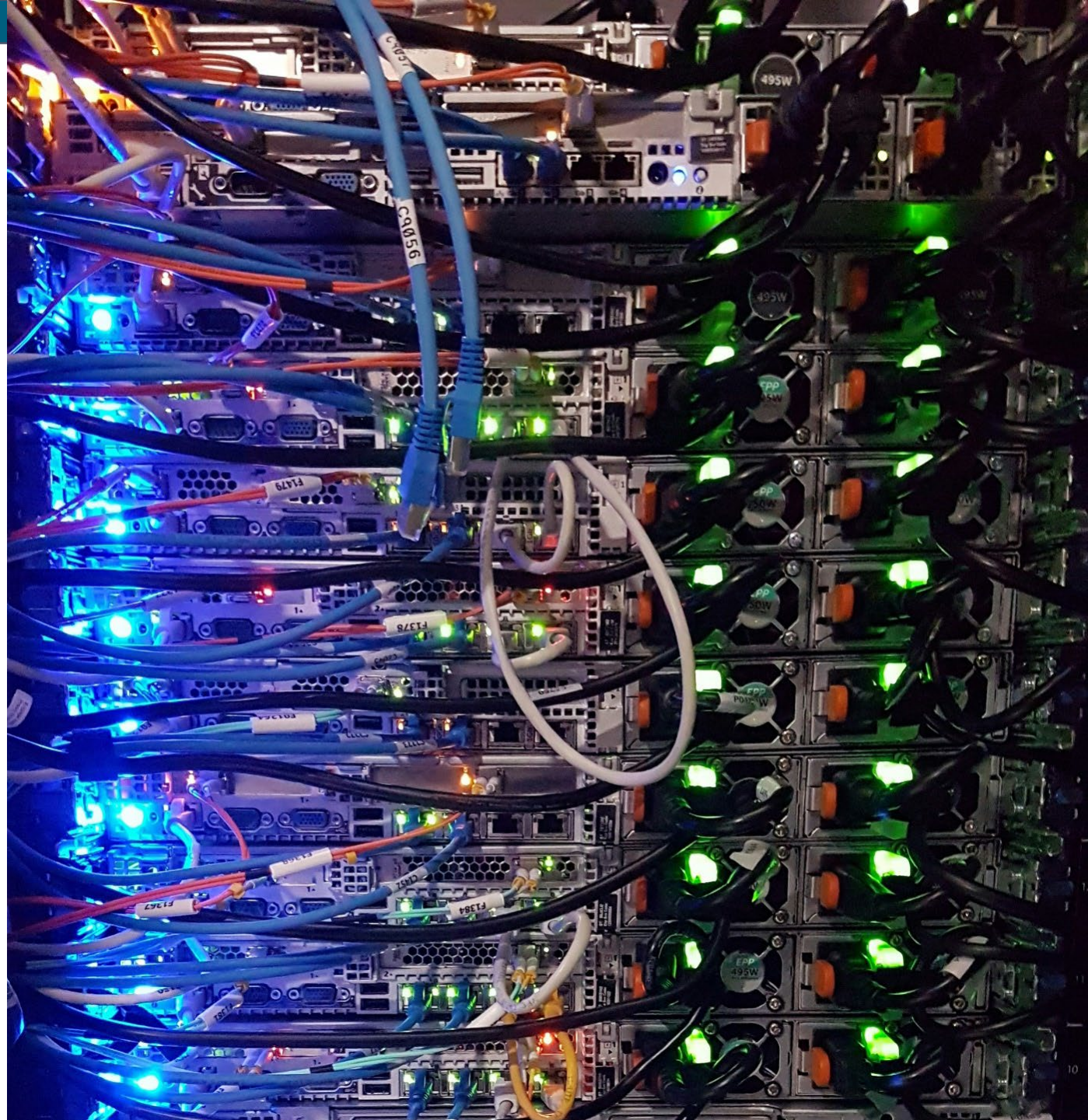


# Automate Operational Capabilities

Expand use of data dashboards, automation, data sharing, and AI to more actively manage transportation network.

Missouri City | Sugarland  
Chambers County  
Port of Freeport  
TxDOT Beaumont

Operations and Staffing





# Increase Staffing for ITS

Increase funding to add  
additional staffing for operations  
and maintenance of ITS.

Pearland | League City  
TxDOT Houston





# Next Steps

- Complete Stakeholder Interviews and Communications Scan
- Begin Update to the Regional ITS Architecture
- Conduct Stakeholder Workshop
- Develop Training Classes for the Regional ITS Architecture

## Contacts

### H-GAC

Stephen Keen  
stephen.keen@h-gac.com

### Kimley-Horn (Project Consultant)

Tom Fowler  
thomas.fowler@kimley-horn.com

Mark Conway  
Mark.Conway@kimley-horn.com

Emma Brockman  
Emma.Brockman@kimley-horn.com



**Thank  
You**