

Harris County Flood Control District Flood Warning System

The [Harris County Flood Control District](#)'s Flood Warning System measures rainfall amounts and monitors water levels in bayous and major streams on a real-time* basis to inform you of dangerous weather conditions. The system relies on 200 [gage stations](#) strategically placed throughout Harris County bayous and their [tributaries](#). The stations contain [sensors](#) that transmit valuable data during times of heavy rainfall and during tropical storms and hurricanes. Some gages also measure wind speed and direction, barometric pressure, air temperature, road temperature and humidity.

The purpose of the Flood Warning System website is to provide information collected by the gages in a user-friendly format directly to you. This information is used by the Flood Control District and by [Harris County's Office of Homeland Security and Emergency Management](#) to inform you of imminent and current flooding conditions along bayous. It also is used by the National Weather Service to assist in the issuing of flood watches and warnings. Accurate rainfall and bayou/stream level data help you and emergency management officials make critical decisions that ultimately can reduce the risk of property damage, injuries and loss of life. The Flood Control District urges you and your family to use this information and take the appropriate precautions during times of heavy rain and flooding. You are encouraged to monitor bayou/stream levels near your homes, places of work and areas along your daily commutes.

This website also provides information on historical rainfall and flooding events, Harris County watersheds and [frequently asked questions](#).

Accessing the Flood Warning System

- <http://www.hcfcd.org/>
- <https://www.harriscountyfws.org/>

FileEditViewHistoryBookmarksToolsHelp

Welcome to the Flood Control | X

www.hcfd.org

Getting StartedDistrict PortalOffice 365 HomeCitrix ReceiverKissflowArcGIS OnlineGetting StartedSurvey 123HCFCDMAAPNextTx GLOEsriOpen GovContentOpenGovOther Bookmarks

HARRIS COUNTY
FLOOD CONTROL
DISTRICT

projects in
your area.

ABOUTACTIVITYRESOURCESCOMMUNITYSelect Language

Don't know your watershed?
Enter your address, below, to find out.
e.g. 9900 Northwest Fwy, Houston, TX 77062

Channels and bayous that surround your home are part of your watershed. Select your watershed from the list below.

Multi-Watershed Projects
Addicks Reservoir
Armand Bayou
Barker Reservoir
Brays Bayou
Buffalo Bayou

Carpenters Bayou
Cedar Bayou
Clear Creek
Cypress Creek
Greens Bayou
Halls Bayou

Hunting Bayou
Jackson Bayou
Little Cypress Creek
Luce Bayou
San Jacinto & Galveston Bay
San Jacinto River

Sims Bayou
Spring Creek
Spring Gully & Goose Creek
Vince Bayou
White Oak Bayou
Willow Creek

Featured Resources

COMMUNITY DEVELOPMENT
BLOCK GRANT


HARRIS COUNTY
2018
BOND
PROGRAM
FLOOD CONTROL DISTRICT

Service
Request
Center

MAAPnext

HARRIS COUNTY
FWS
FLOOD WARNING SYSTEM

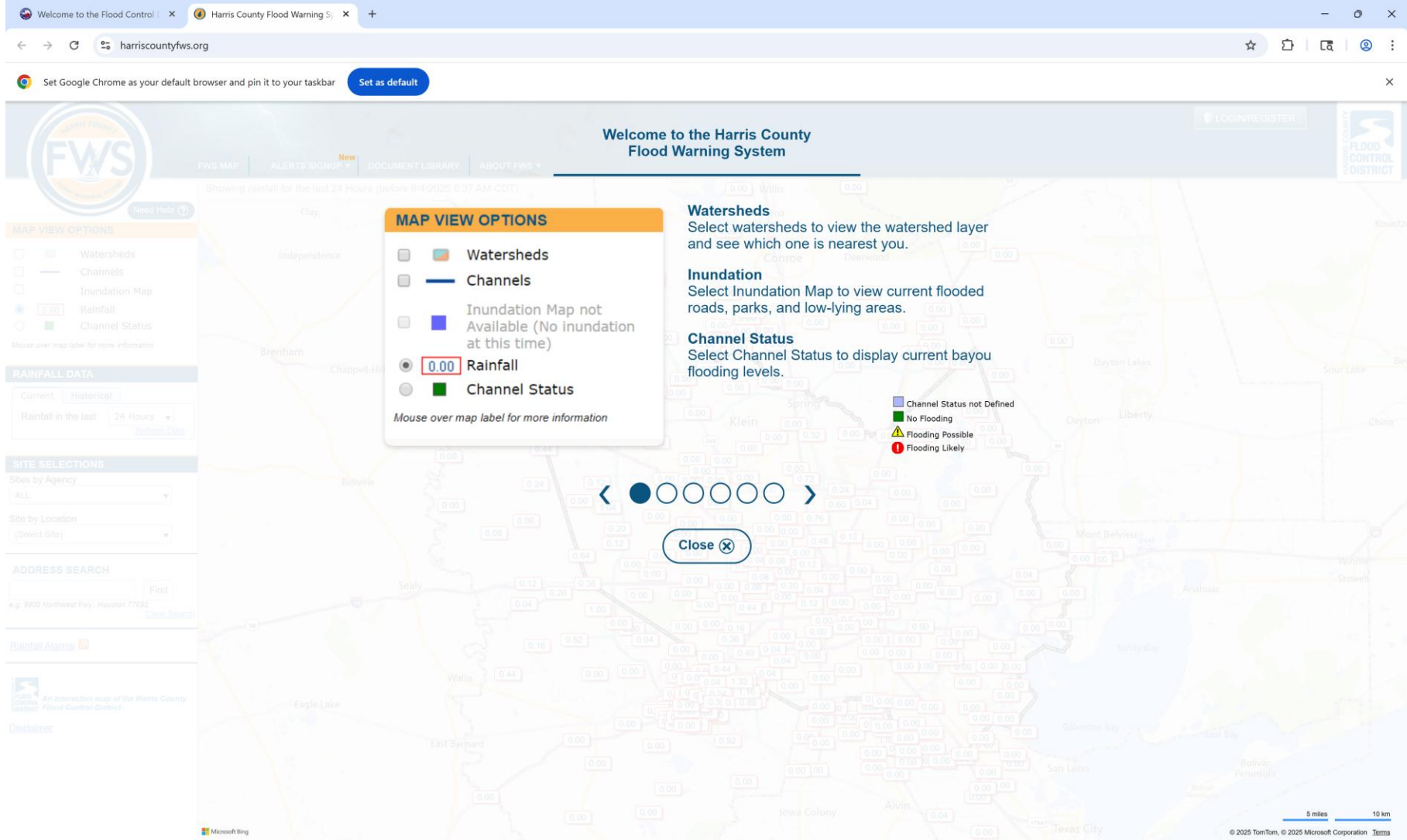
Flood Risk Reduction Projects in Harris County

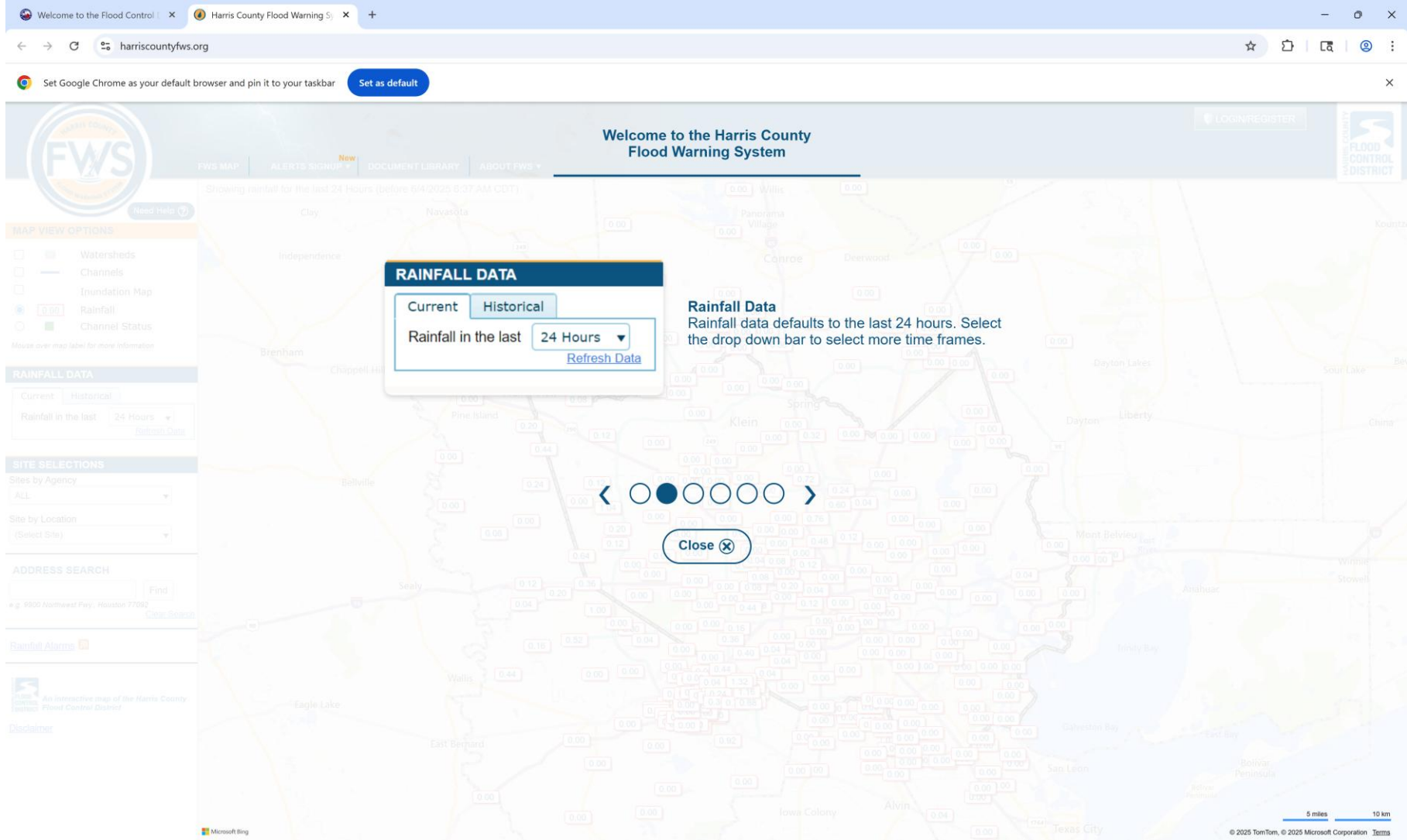


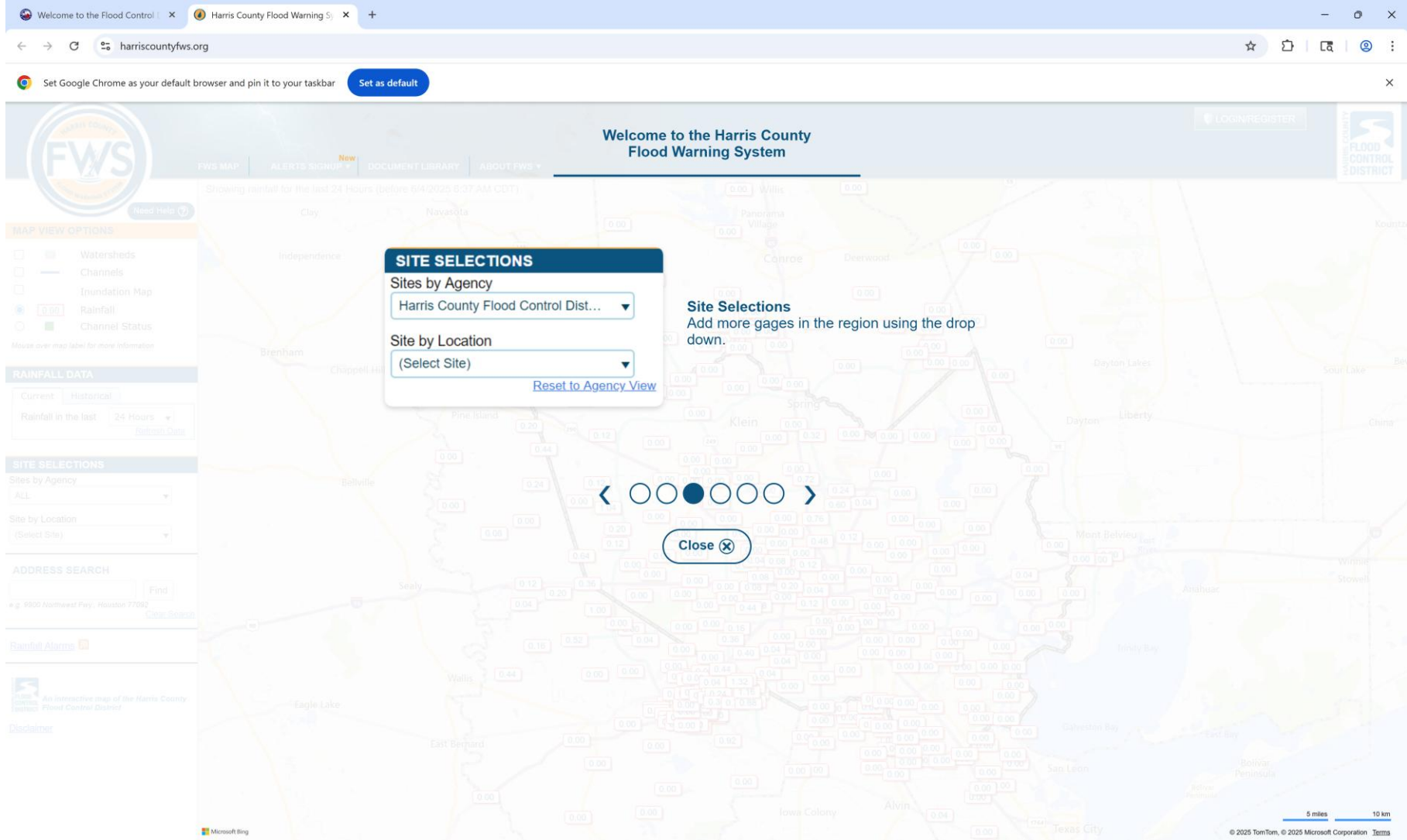
HCFCFWS

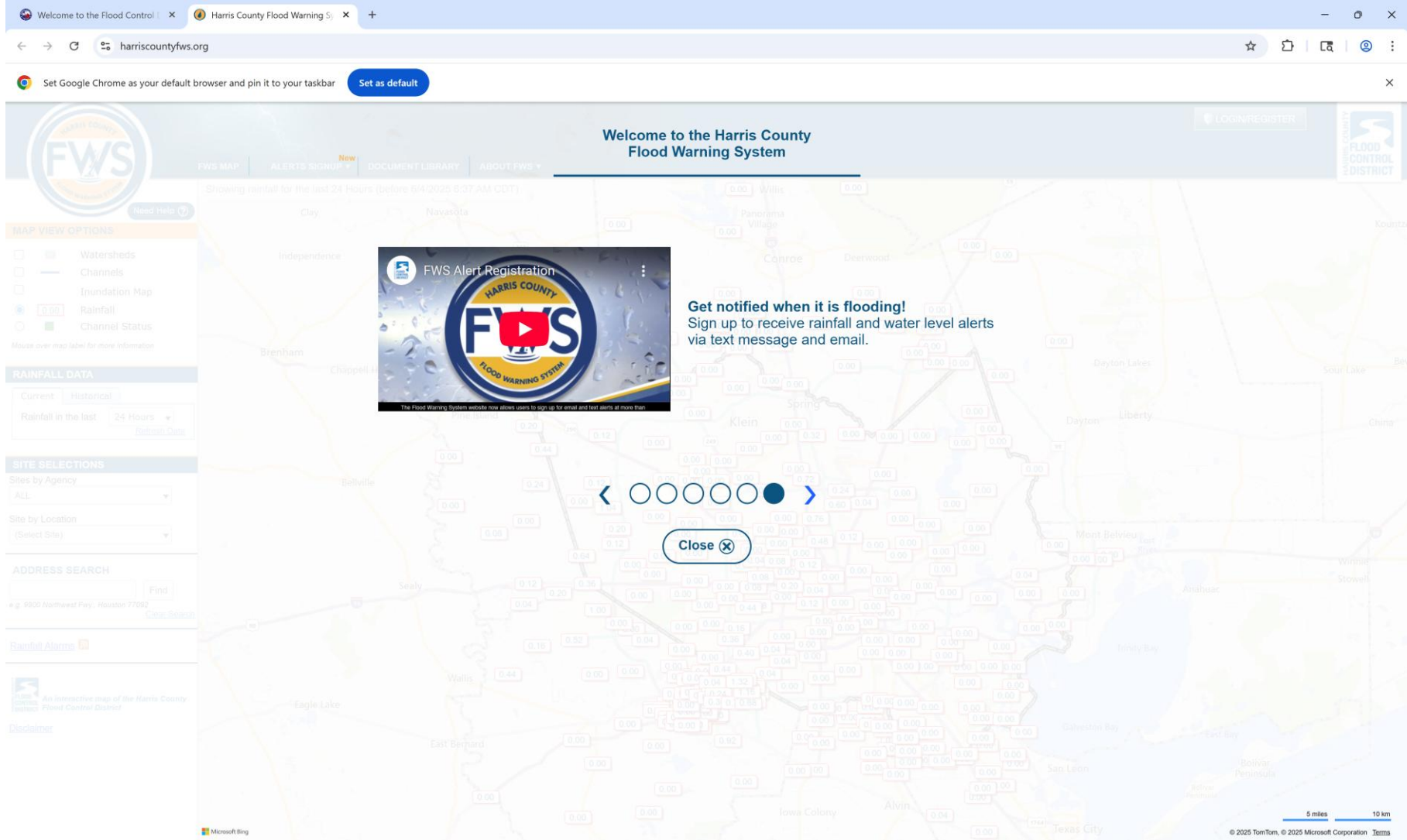
GDW 6/4/2025

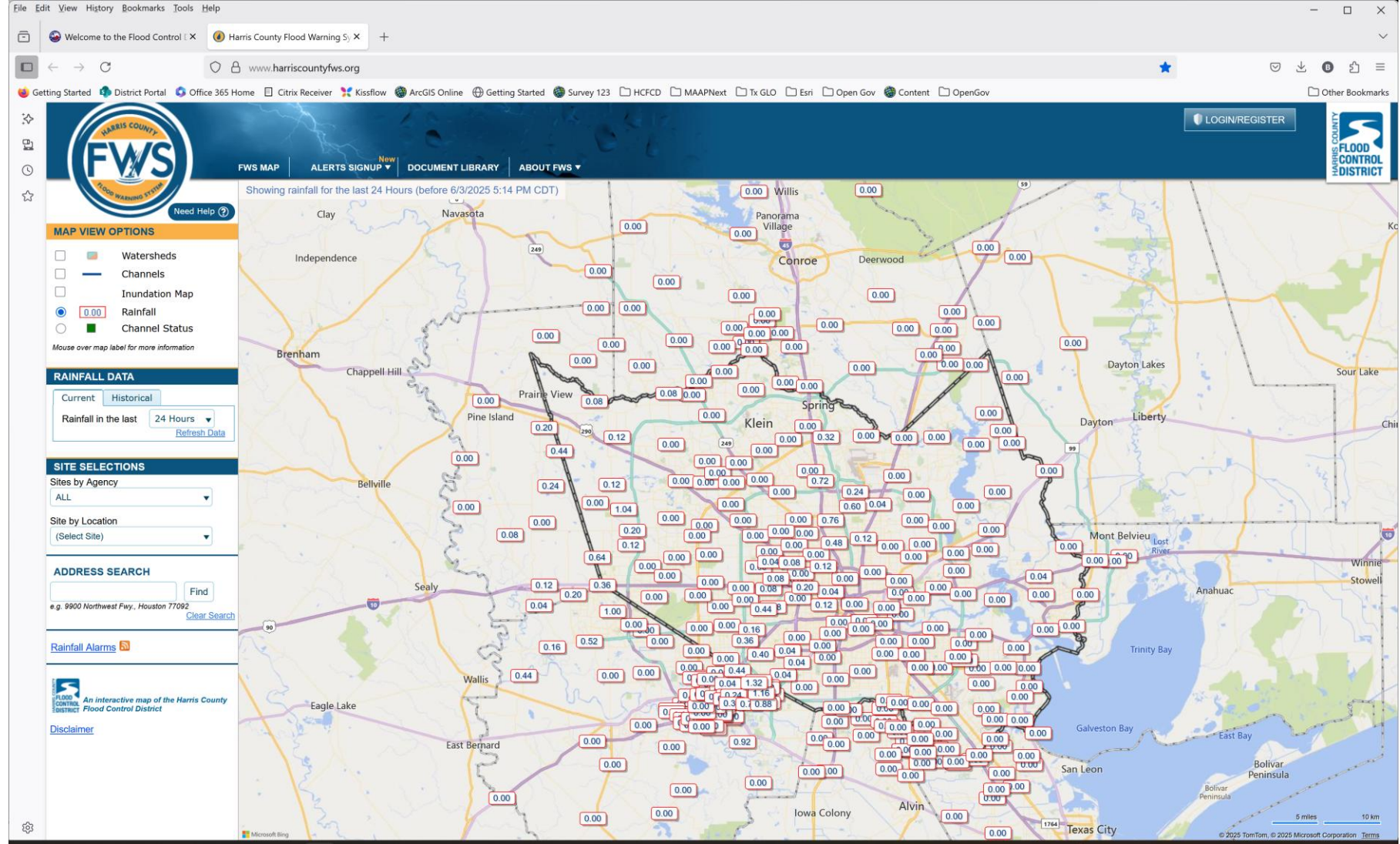
3















Need Help ?


MAP VIEW OPTIONS

☐



Watersheds

☐



Channels

☐


Inundation Map

☒

0.00

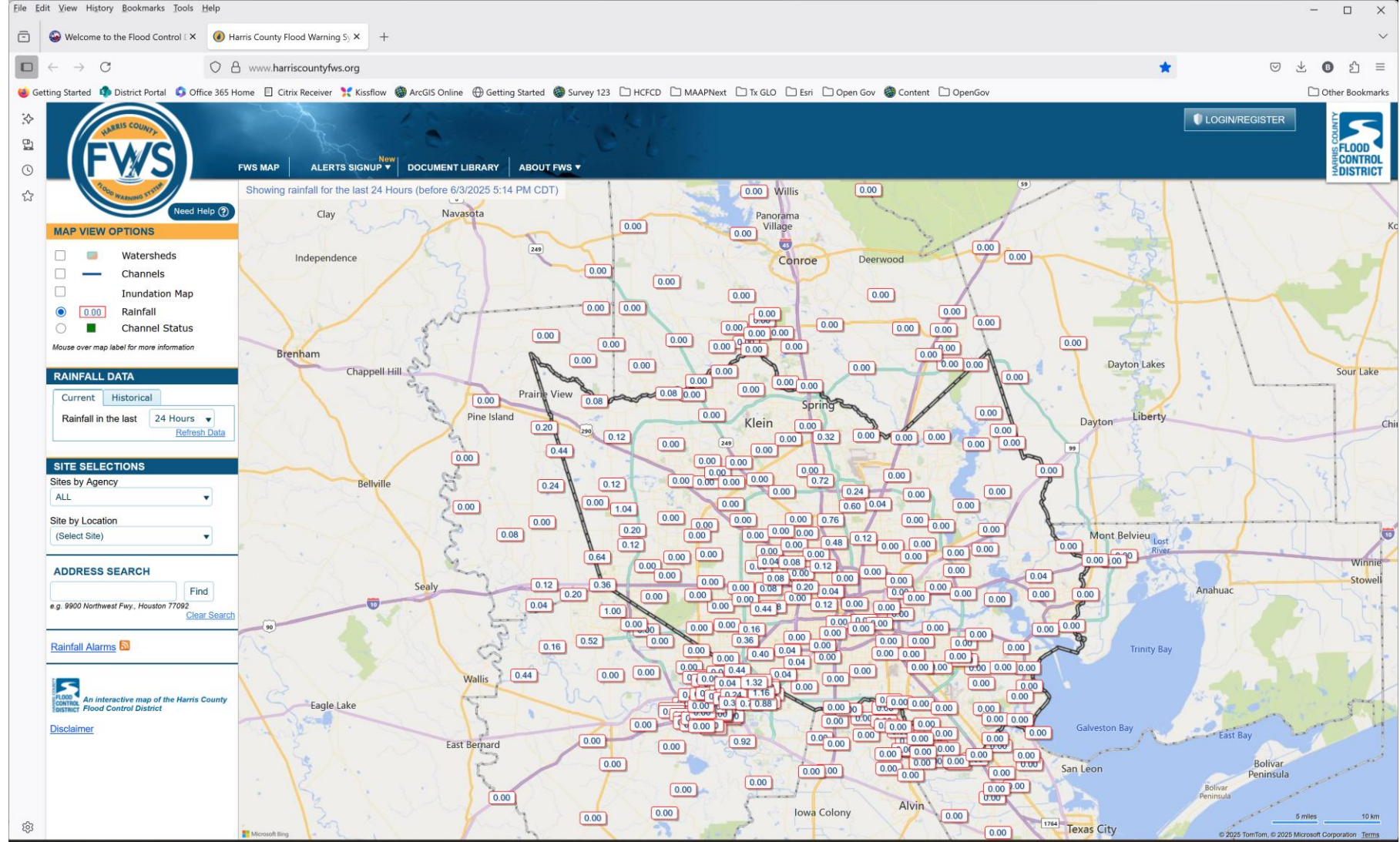
Rainfall

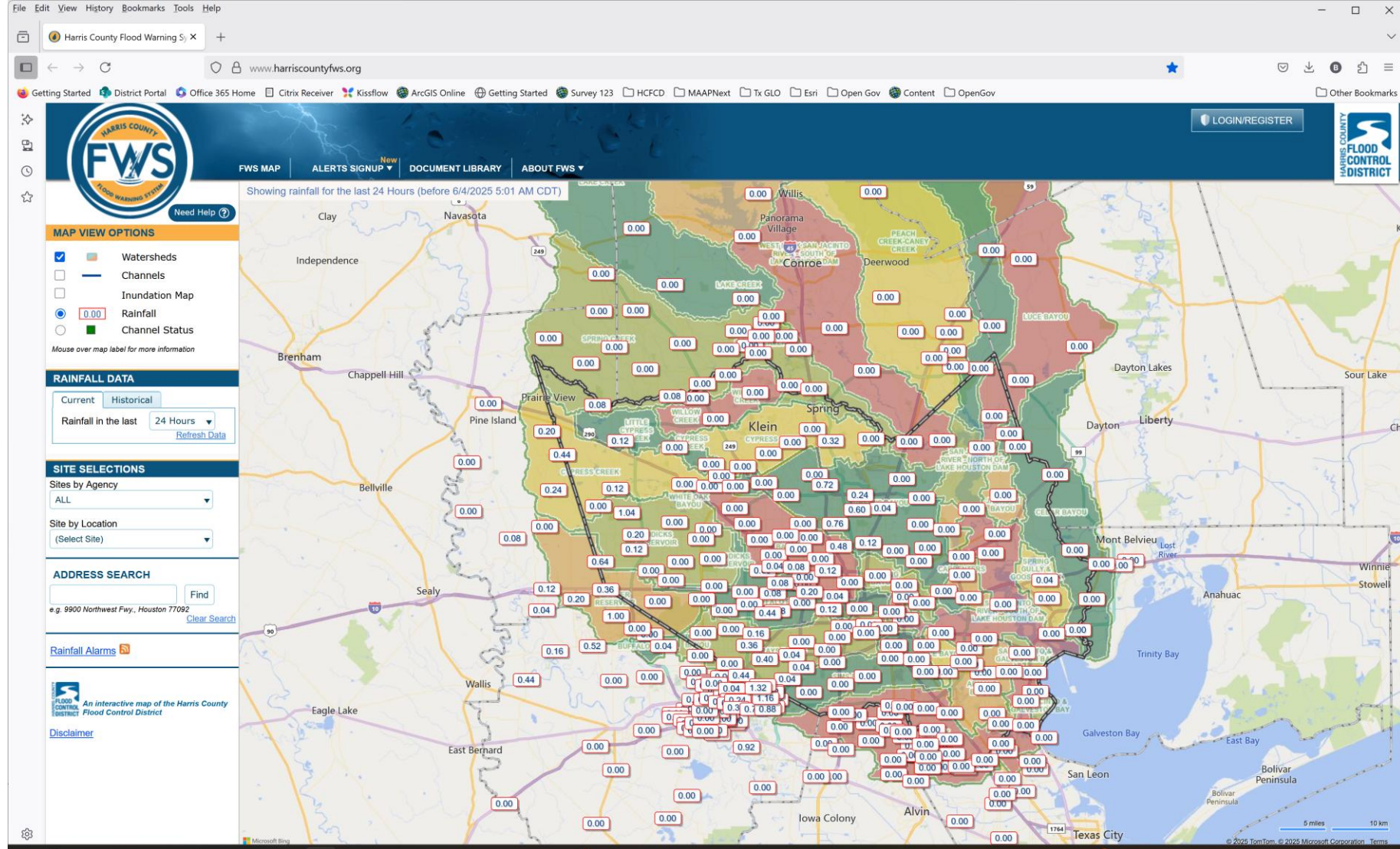
☐



Channel Status

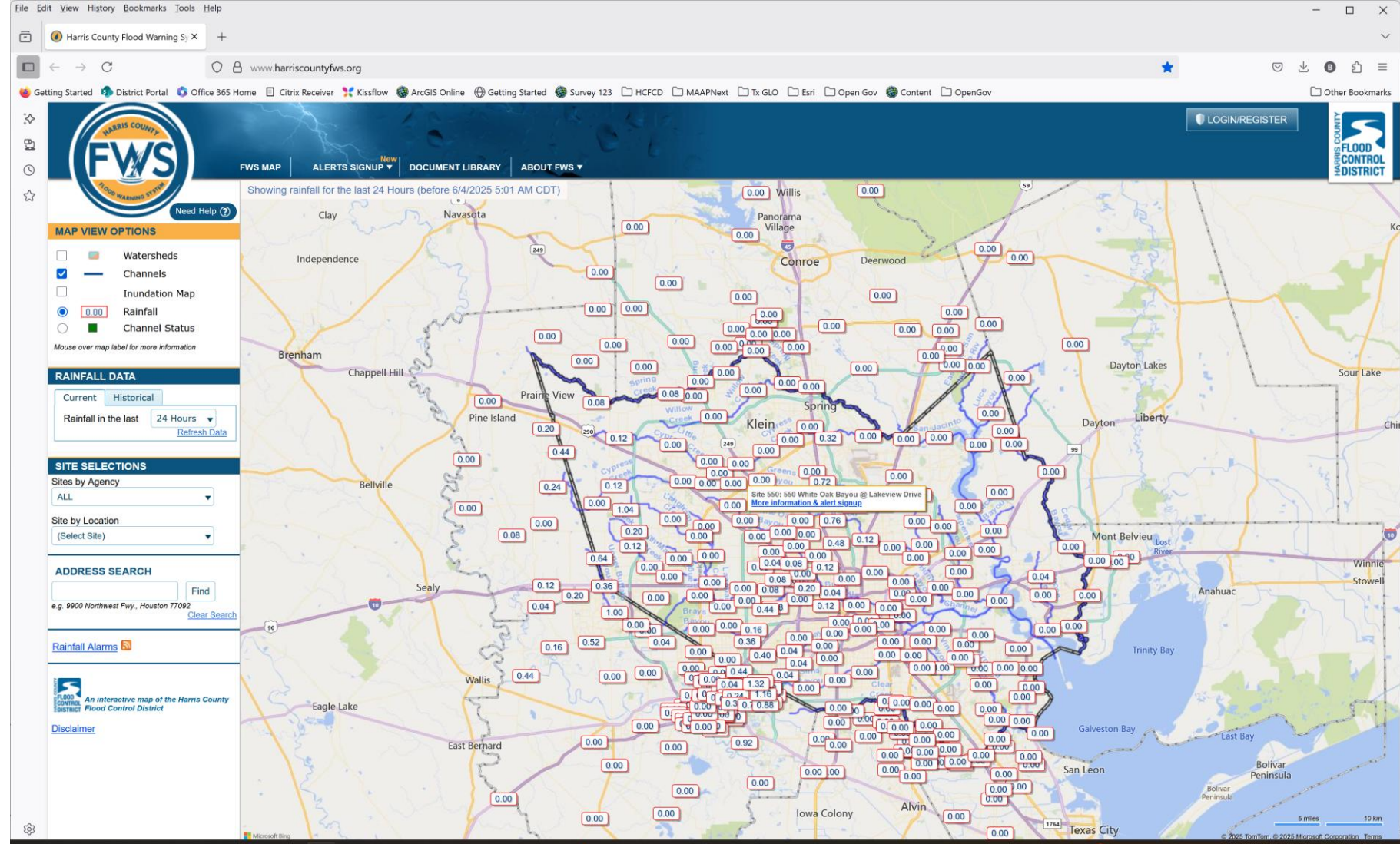
Mouse over map label for more information

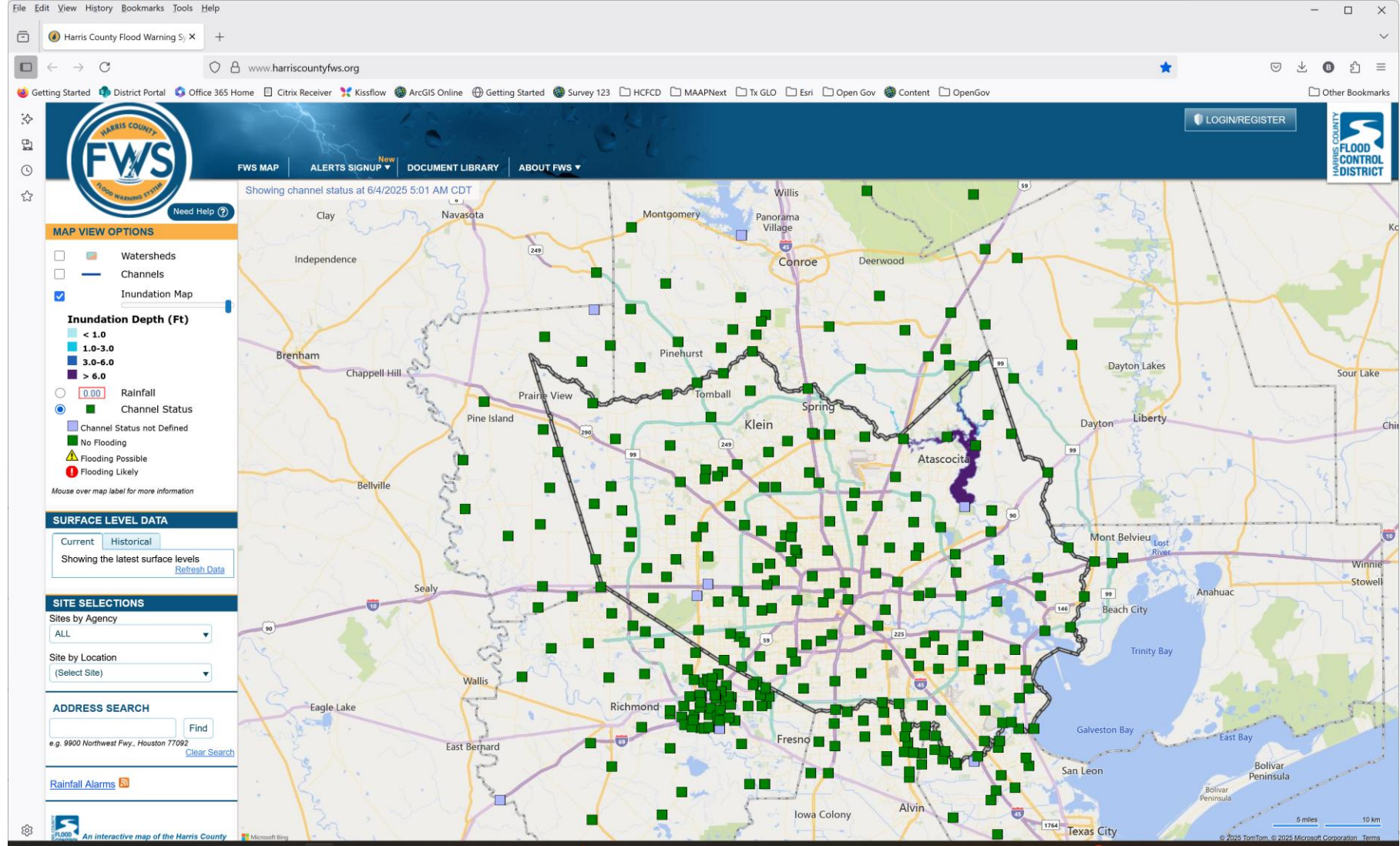


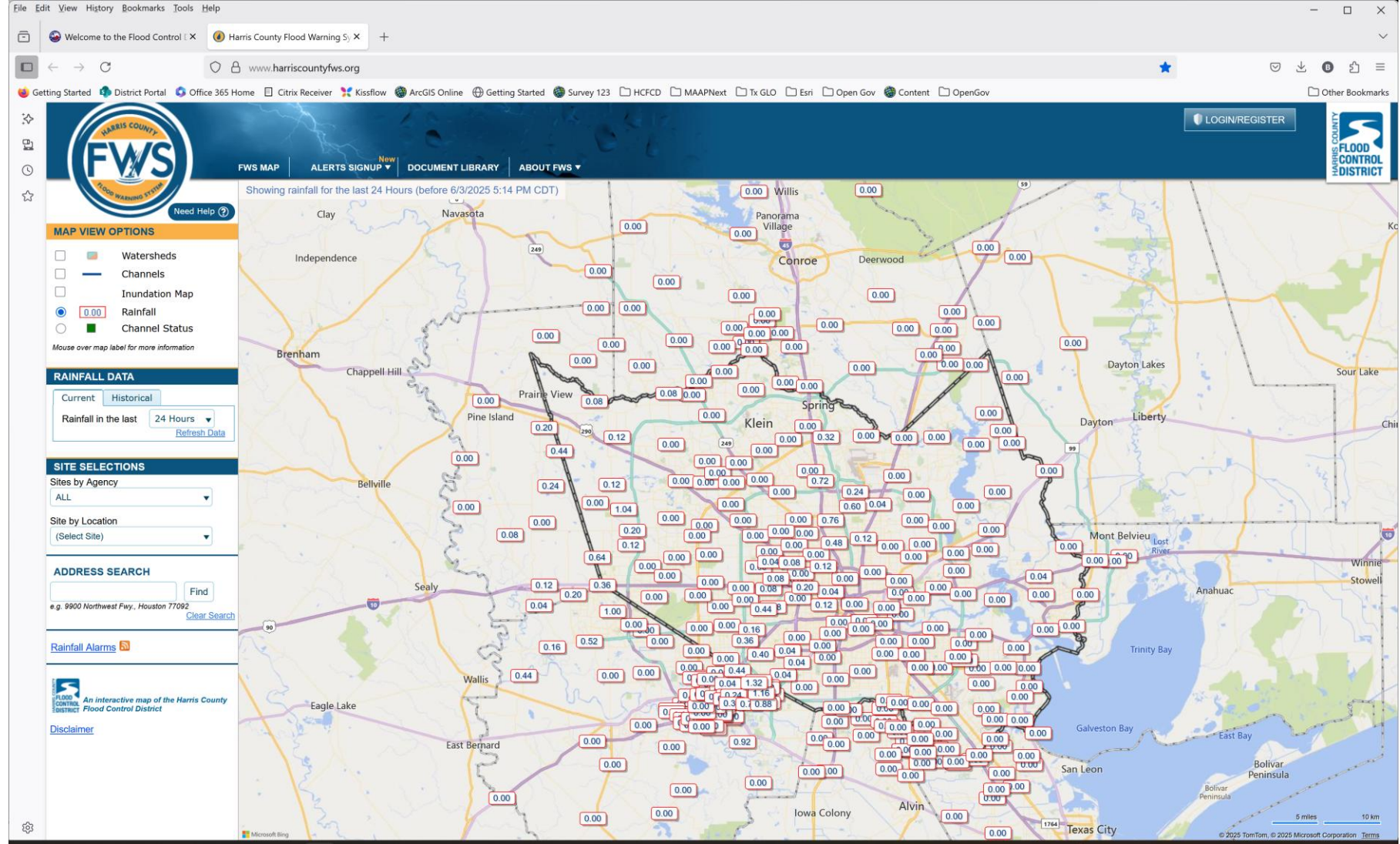


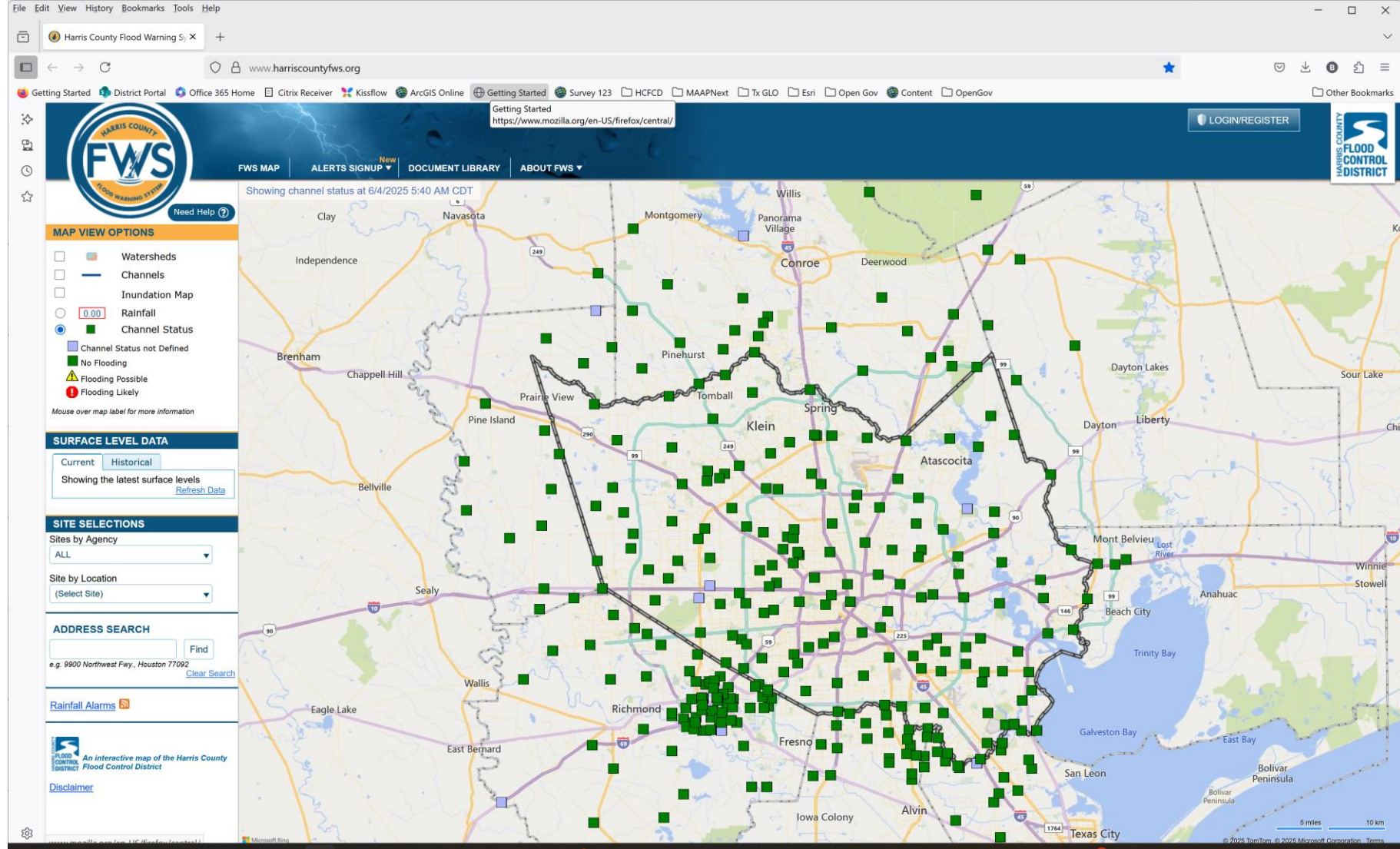
Anatomy or a Unit Number

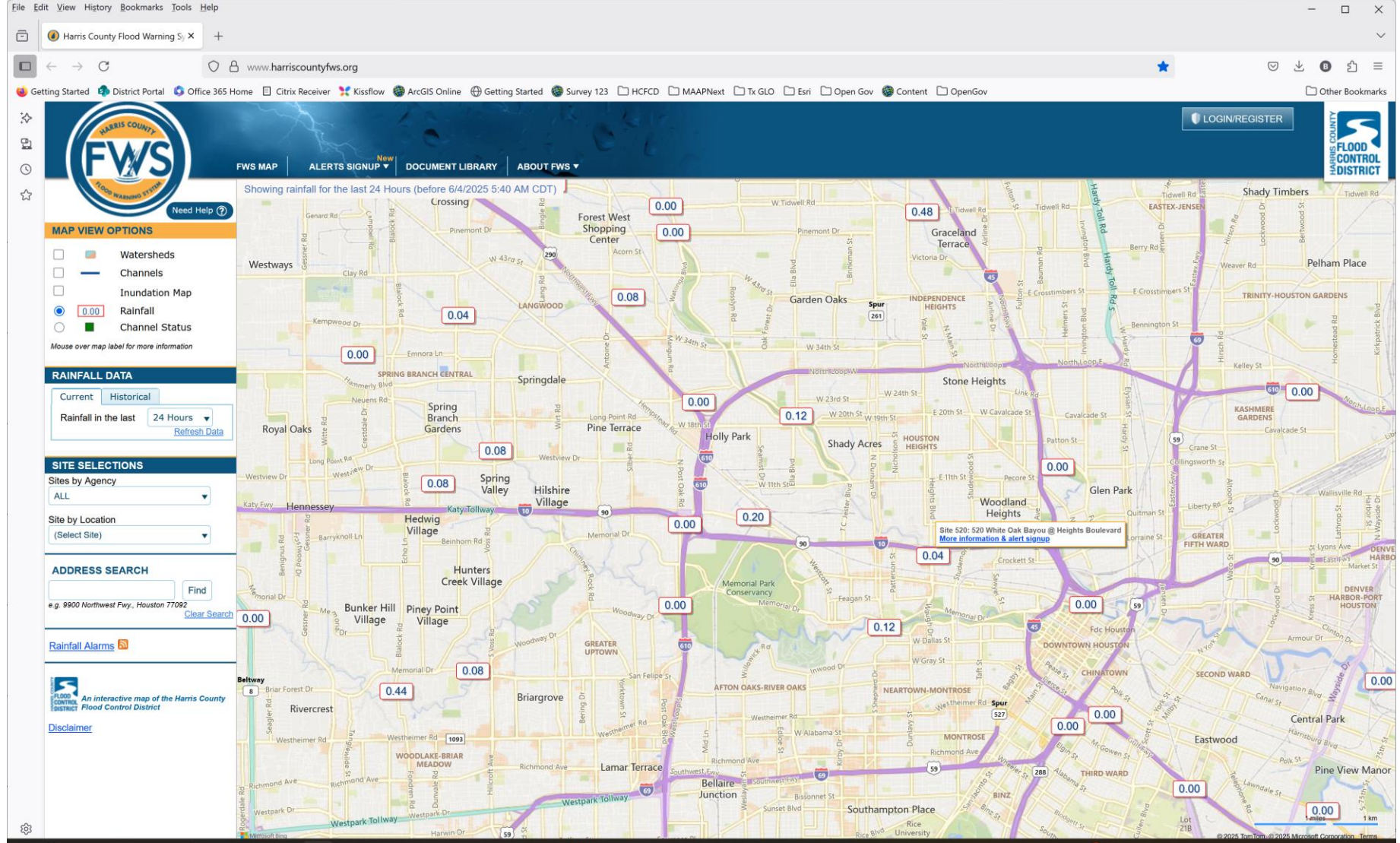
- <C:\Users\bruce.davidson\Desktop\Unit No. Anatomy 4-28-15.pdf>

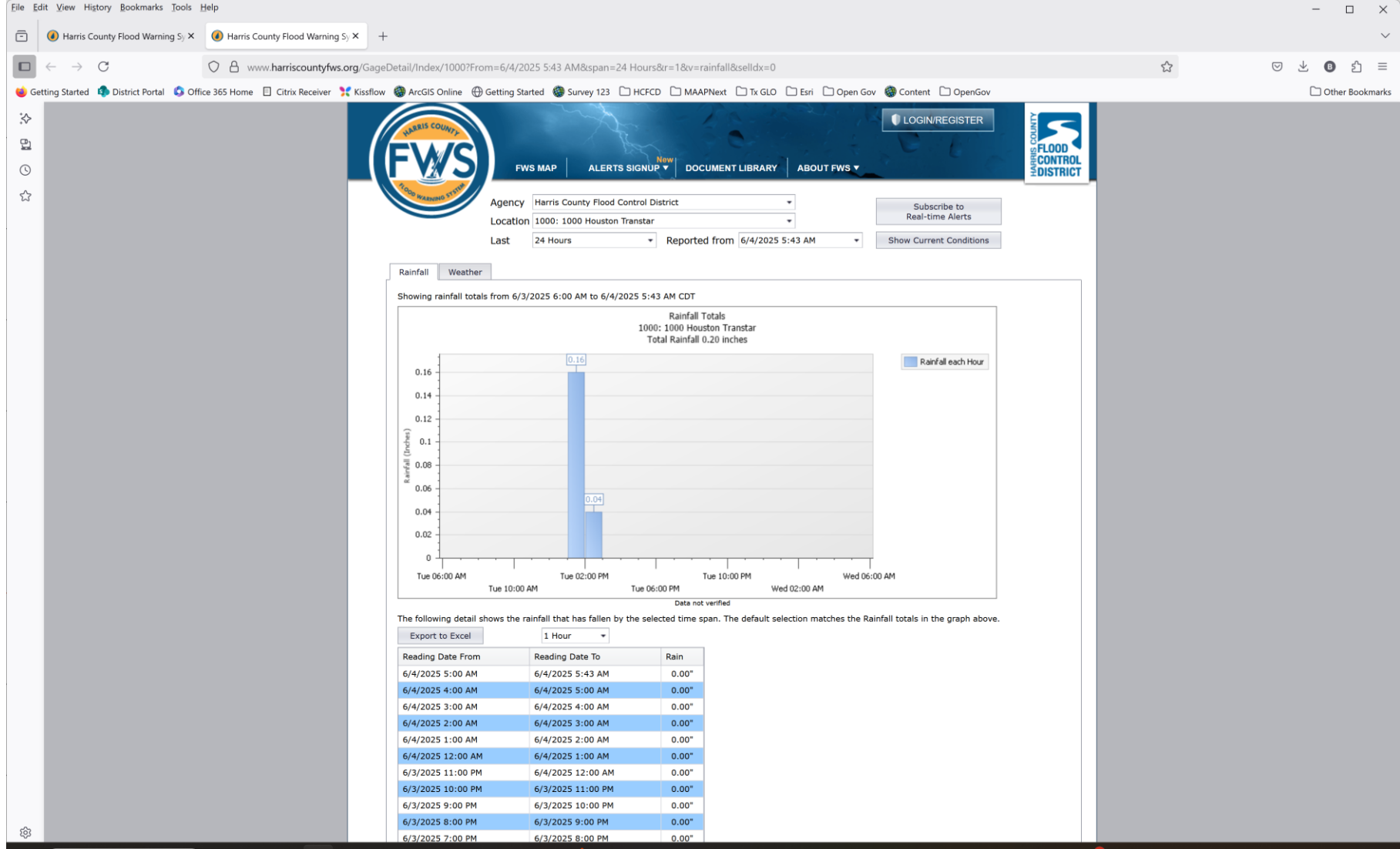














RAINFALL DATA

Current

Historical

Rainfall in the last

24 Hours ▼

15 Mins

30 Mins

1 Hour

3 Hours

6 Hours

12 Hours

24 Hours

2 Days

SITE SELECTIONS

Sites by Agency

ALL

Site by Location

(Select Site)

ADDRESS SEARCH

Rainfall Intevals

- 15 Mins
- 30 Mins
- 1 Hour
- 3 Hours
- 6 Hours
- 12 Hours
- 24 Hours
- 2 Days
- 7 Days
- 1 Month
- 1 Year

RAINFALL DATA

Current

Historical

Rainfall in the last

24 Hours

15 Mins

30 Mins

1 Hour

3 Hours

6 Hours

12 Hours

24 Hours

2 Days

SITE SELECTIONS

Sites by Agency

ALL

Site by Location

(Select Site)

ADDRESS SEARCH

RAINFALL DATA

Current

Historical

1



day(s)

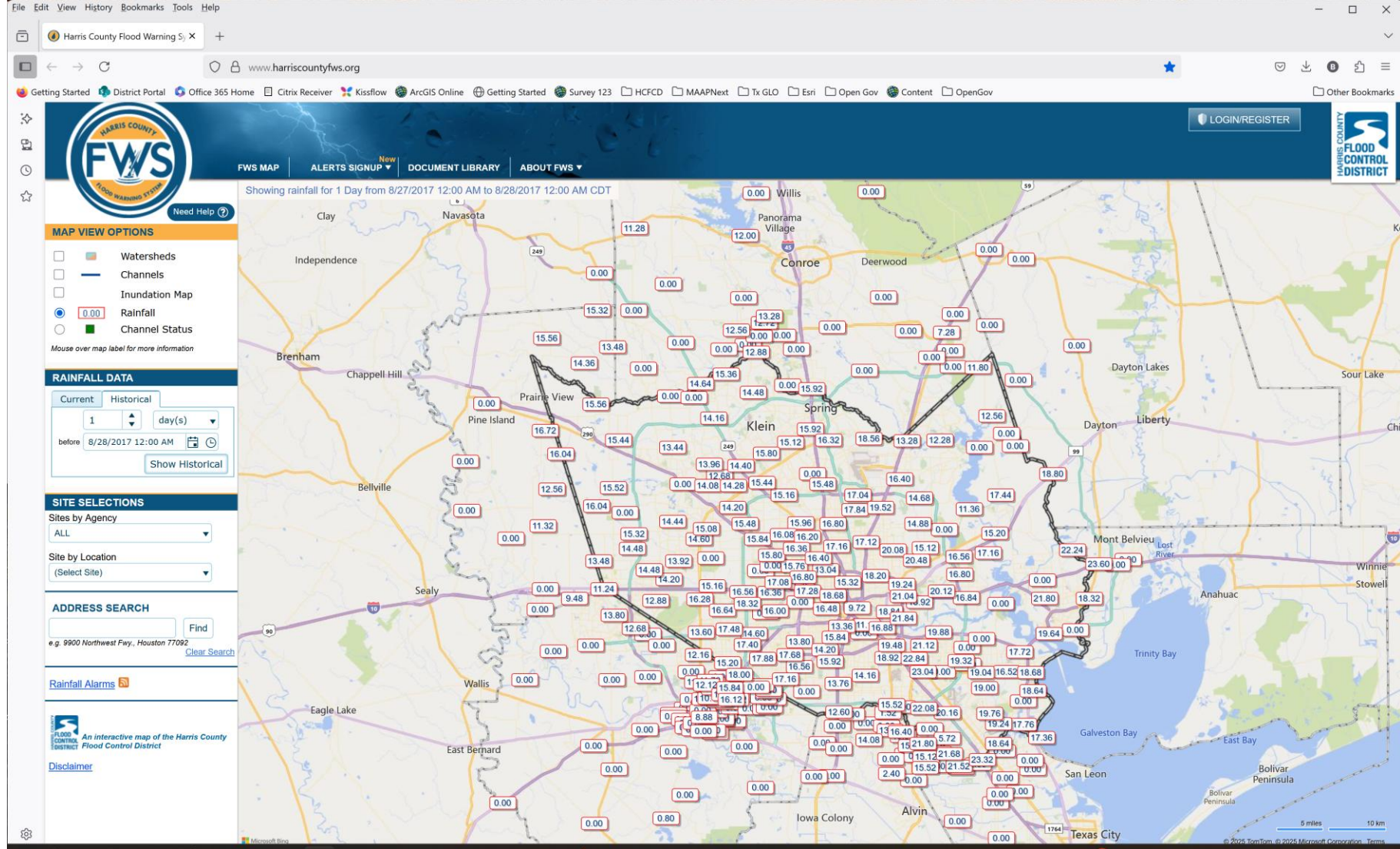


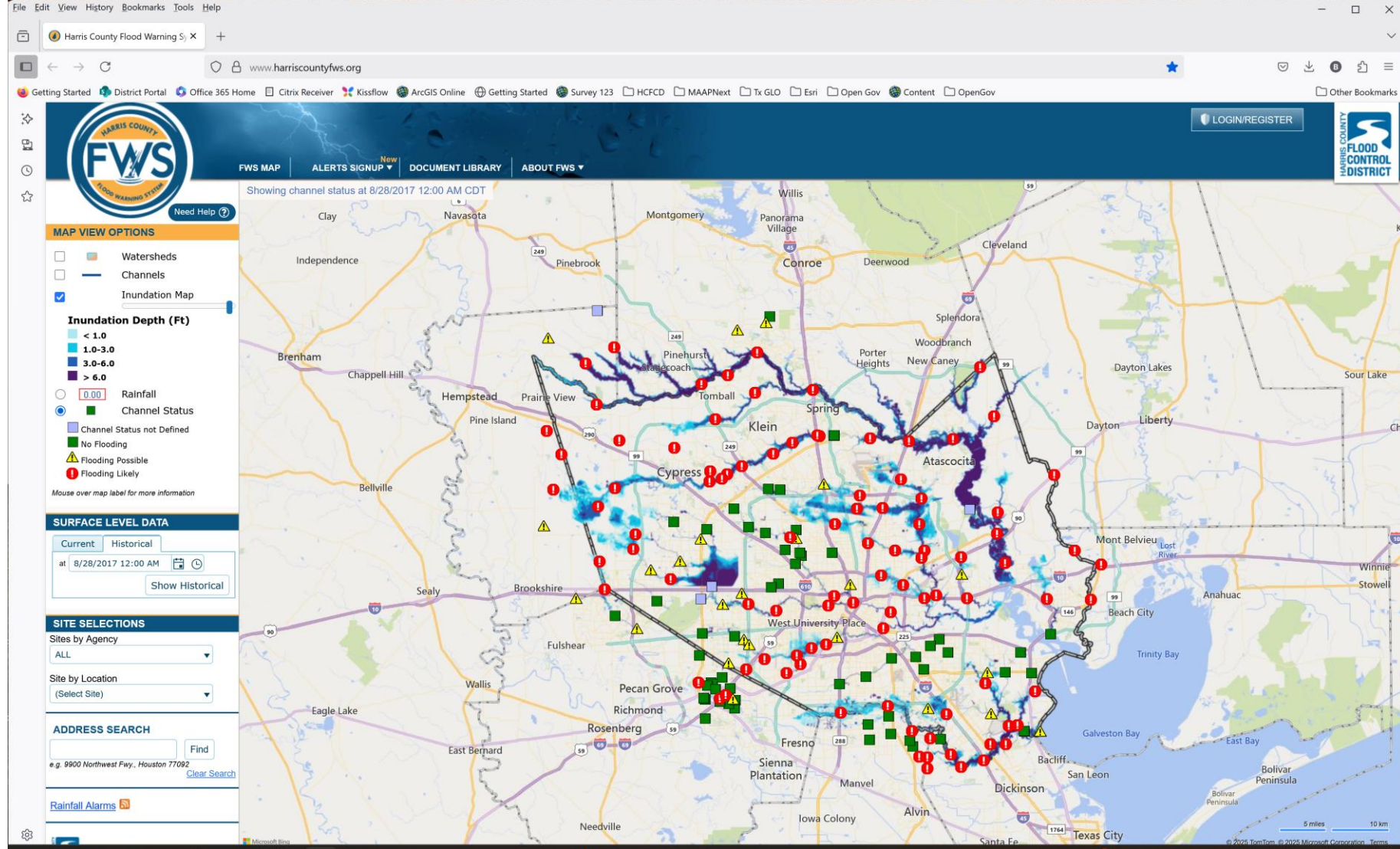
before

6/4/2025 5:40 AM



Show Historical





Agencies

Brazoria Drainage District No. 4
City of Friendswood
League City
Missouri City
Mount Belview
Sugar Land
Fort Bend County
Galveston County Drainage District 1
Harris County Flood Control District
San Jacinto River Authority
Trinity River Authority
TxDOT
Waller County
The Woodlands

SITE SELECTIONS

Sites by Agency

ALL

☒ ALL

☒ Brazoria Drainage District No. 4

☒ City of Friendswood

☒ City of League City

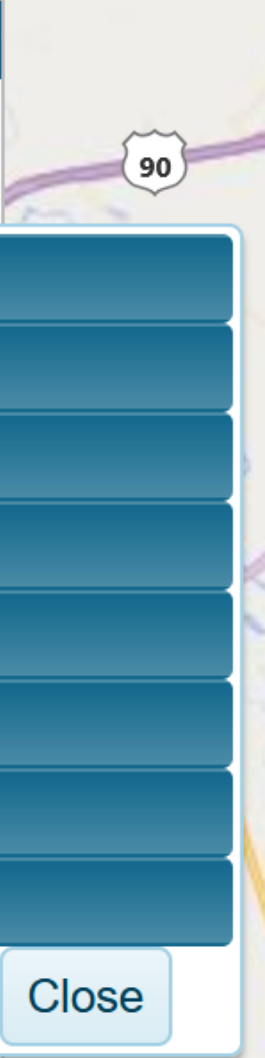
☒ City of Missouri City

☒ City of Mont Belvieu

☒ City of Sugar Land

☒ Fort Bend County

Close



SITE SELECTIONS

Sites by Agency

ALL ▼

Site by Location

(Select Site) ▼

(Select Site)

100:100 Clear Lake 2nd Outlet @ SH 146

105:105 Marys Creek @ Winding Road

110:110 Clear Creek @ I-45

115:115 Cowart Creek @ Baker Road

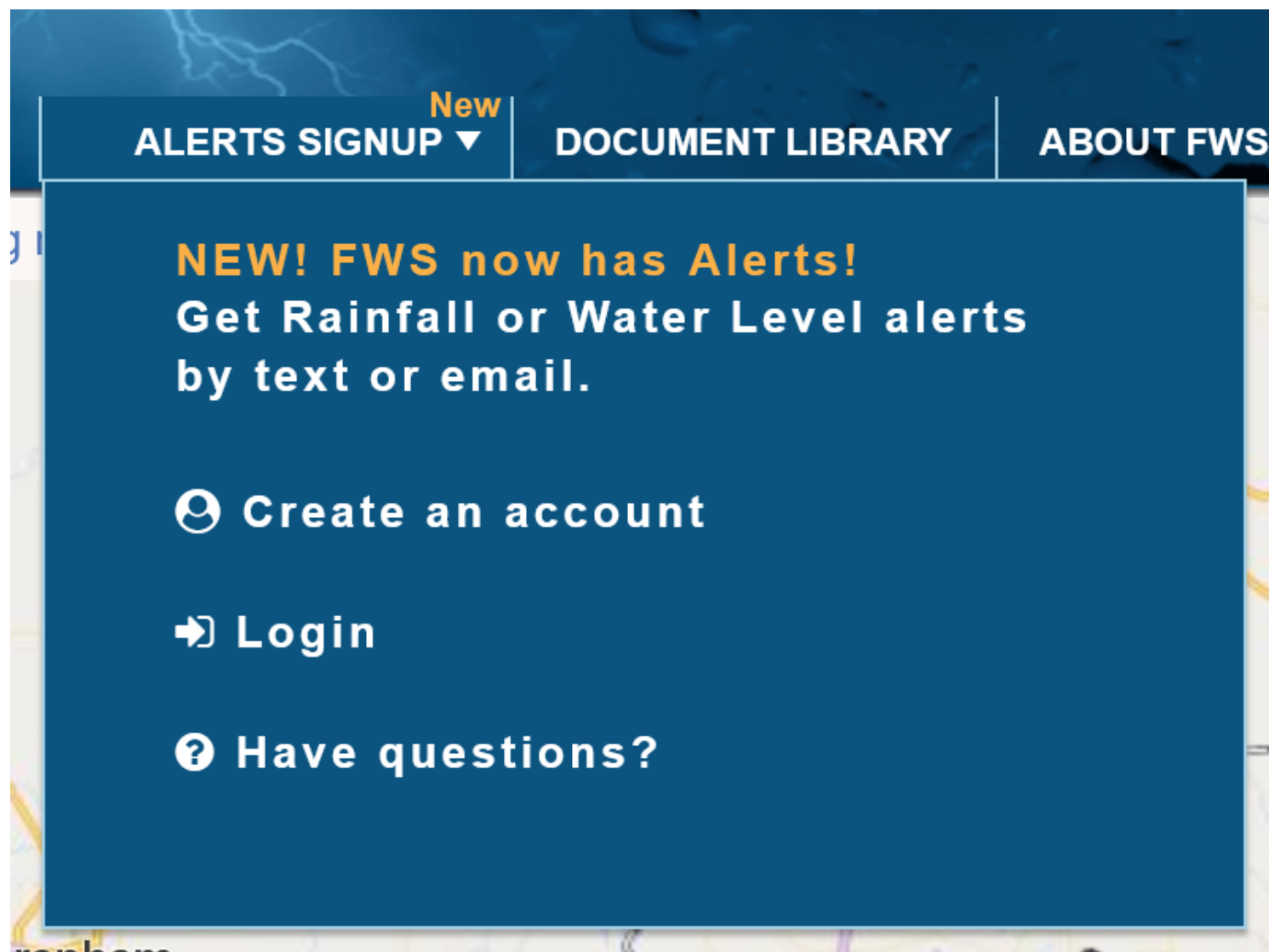
120:120 Clear Creek @ FM 528

125:125 Chigger Creek @ Windsong Lane

130:130 Clear Creek @ Bay Area Boulevard



Alerts





Public Services

- Watersheds
 - <https://services2.arcgis.com/nLI0k0Mja5hnSeSI/arcgis/rest/services/Watersheds/FeatureServer>
- Channels
 - https://services2.arcgis.com/nLI0k0Mja5hnSeSI/arcgis/rest/services/HCFCD_TSARP_CAP_Drainage/FeatureServer
 - https://services2.arcgis.com/nLI0k0Mja5hnSeSI/arcgis/rest/services/Drainage_Network/FeatureServer
- Inundation
 - https://tiles.arcgis.com/tiles/nLI0k0Mja5hnSeSI/arcgis/rest/services/FWS_Inundation/MapServer
- Rainfall
 - https://services2.arcgis.com/nLI0k0Mja5hnSeSI/arcgis/rest/services/HCFCD_Regional_Flood_Warning_System_Gages/FeatureServer