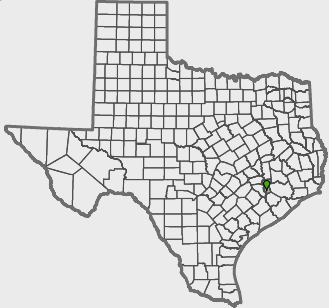


Published December 18, 2020
Connected Nation Texas is a statewide initiative funded through the Texas Rural Funders to support all Texans in leveraging broadband.

- County Boundary
- Municipal Boundary
- Federal Land
- Water
- Local Road

Fixed, Terrestrial Non-Mobile Internet Service

- Detailed Service Areas
- FCC Service Availability

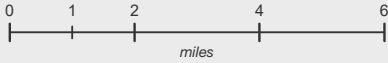


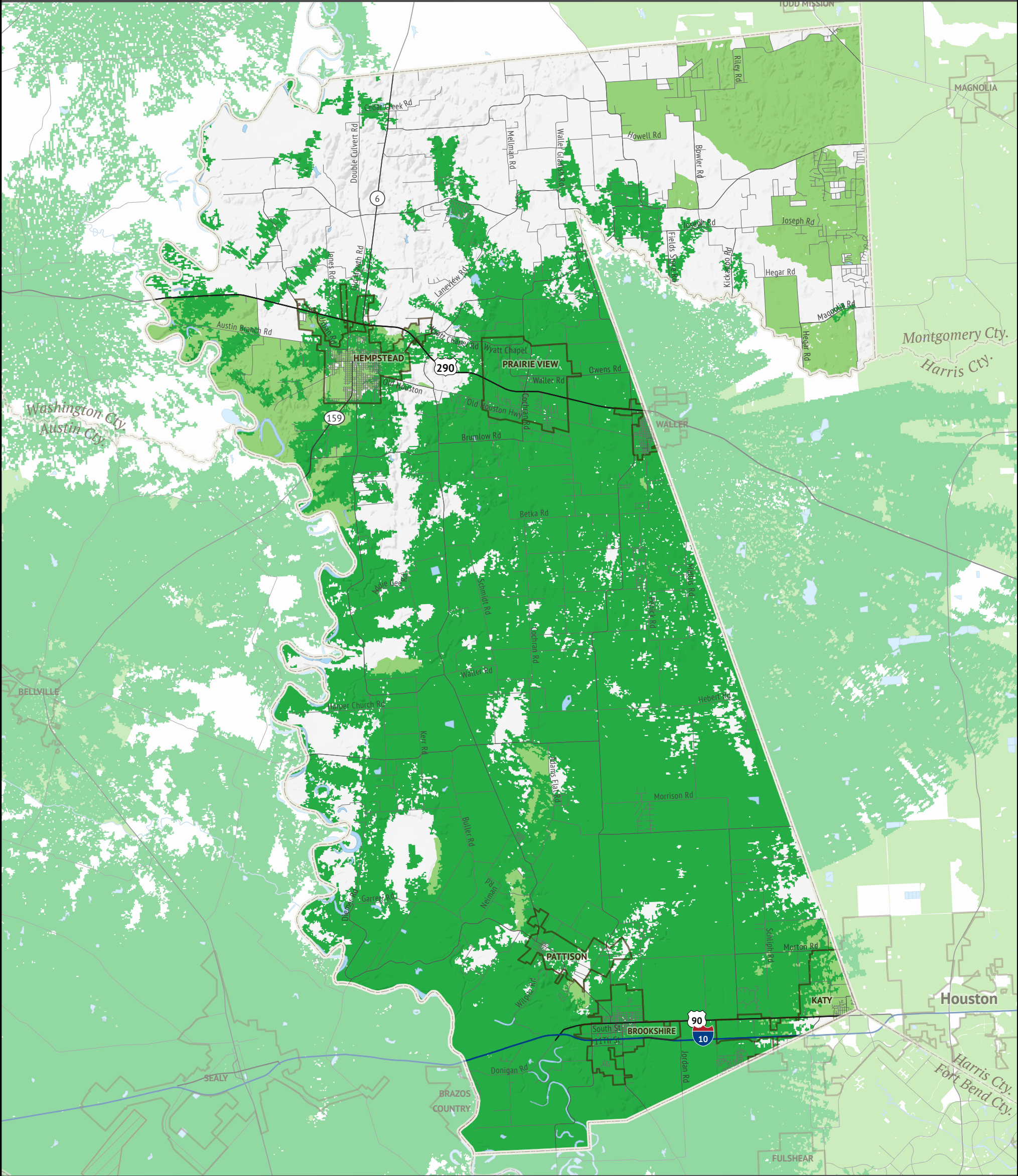
Broadband data displayed on this map are developed from a combination of direct provider outreach and data collection, FCC Form 477 broadband deployment filings, and independent research conducted by Connected Nation Texas. If a broadband provider was unwilling or unable to supply granular data and a detailed service area could not be developed, the provider's service availability is represented by FCC Form 477 data, a format which tends to be overstated.

This map is not a guarantee of internet service availability. Mobile and satellite services may also be available.






The current FCC definition of broadband is a minimum speed of 25 Mbps (Megabits per second) download and 3 Mbps upload.

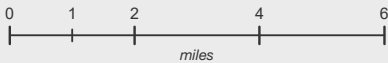
Please submit feedback regarding any possible mapping inaccuracies at <https://connectednation.org/texas/feedback>. Updates to this map will occur in July 2021.







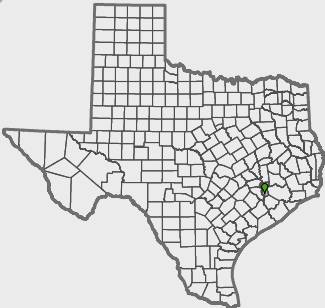
Published December 18, 2020
Connected Nation Texas is a statewide initiative funded through the Texas Rural Funders to support all Texans in leveraging broadband.

-  County Boundary
-  Municipal Boundary
-  Federal Land
-  Water
-  Local Road



Fixed, Terrestrial Non-Mobile Broadband Service

-  Detailed Service Areas
-  FCC Service Availability



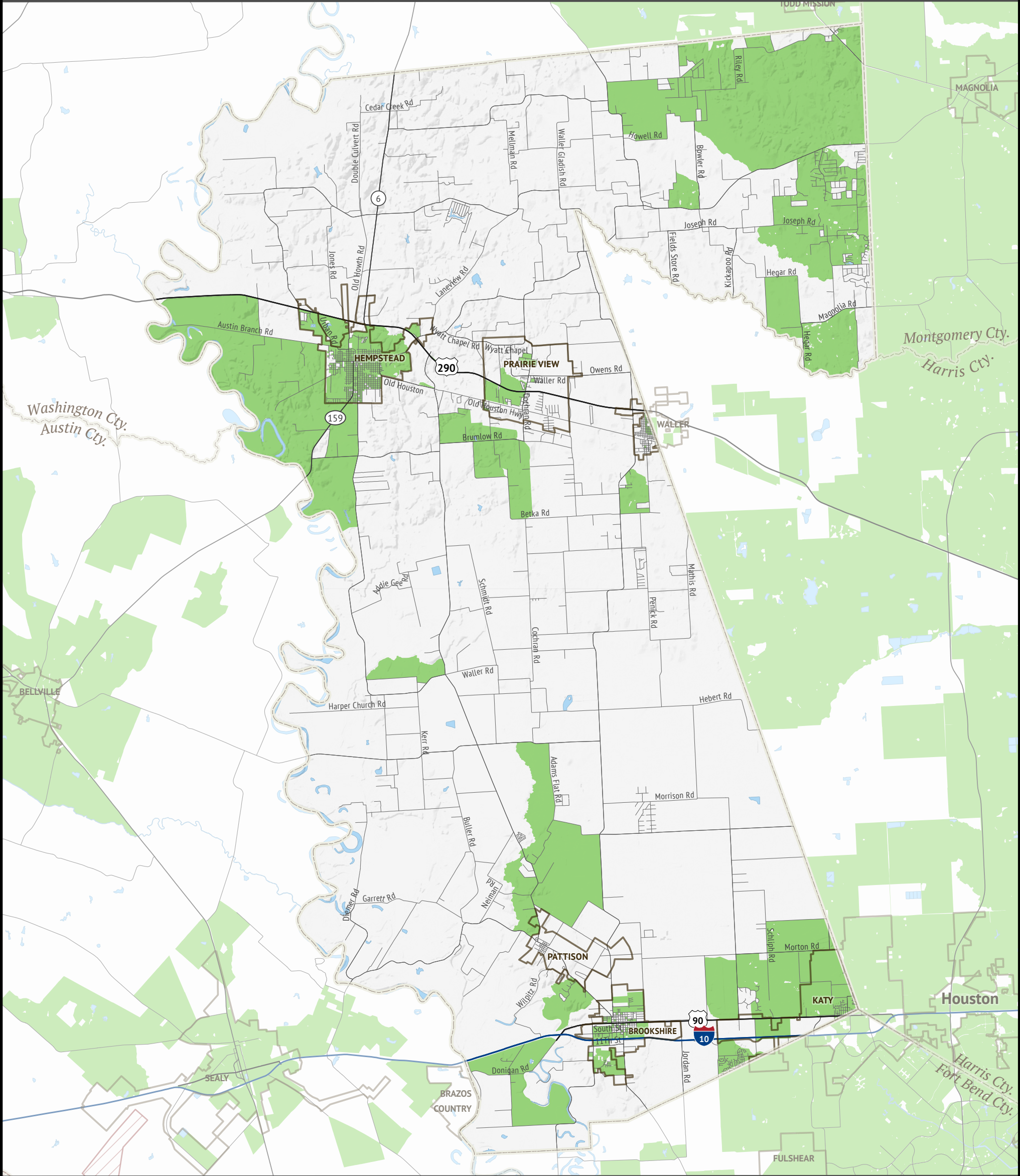
Broadband data displayed on this map are developed from a combination of direct provider outreach and data collection, FCC Form 477 broadband deployment filings, and independent research conducted by Connected Nation Texas. If a broadband provider was unwilling or unable to supply granular data and a detailed service area could not be developed, the provider's service availability is represented by FCC Form 477 data, a format which tends to be overstated.

This map is not a guarantee of internet service availability. Mobile and satellite services may also be available.

The current FCC definition of broadband is a minimum speed of 25 Mbps (Megabits per second) download and 3 Mbps upload.

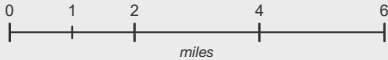
Please submit feedback regarding any possible mapping inaccuracies at <https://connectednation.org/texas/feedback>. Updates to this map will occur in July 2021.





Published December 18, 2020
Connected Nation Texas is a statewide initiative funded through the Texas Rural Funders to support all Texans in leveraging broadband.

- County Boundary
- Municipal Boundary
- Federal Land
- Water
- Local Road



Fixed, Terrestrial Non-Mobile Broadband Service

- Detailed Service Areas
- FCC Service Availability



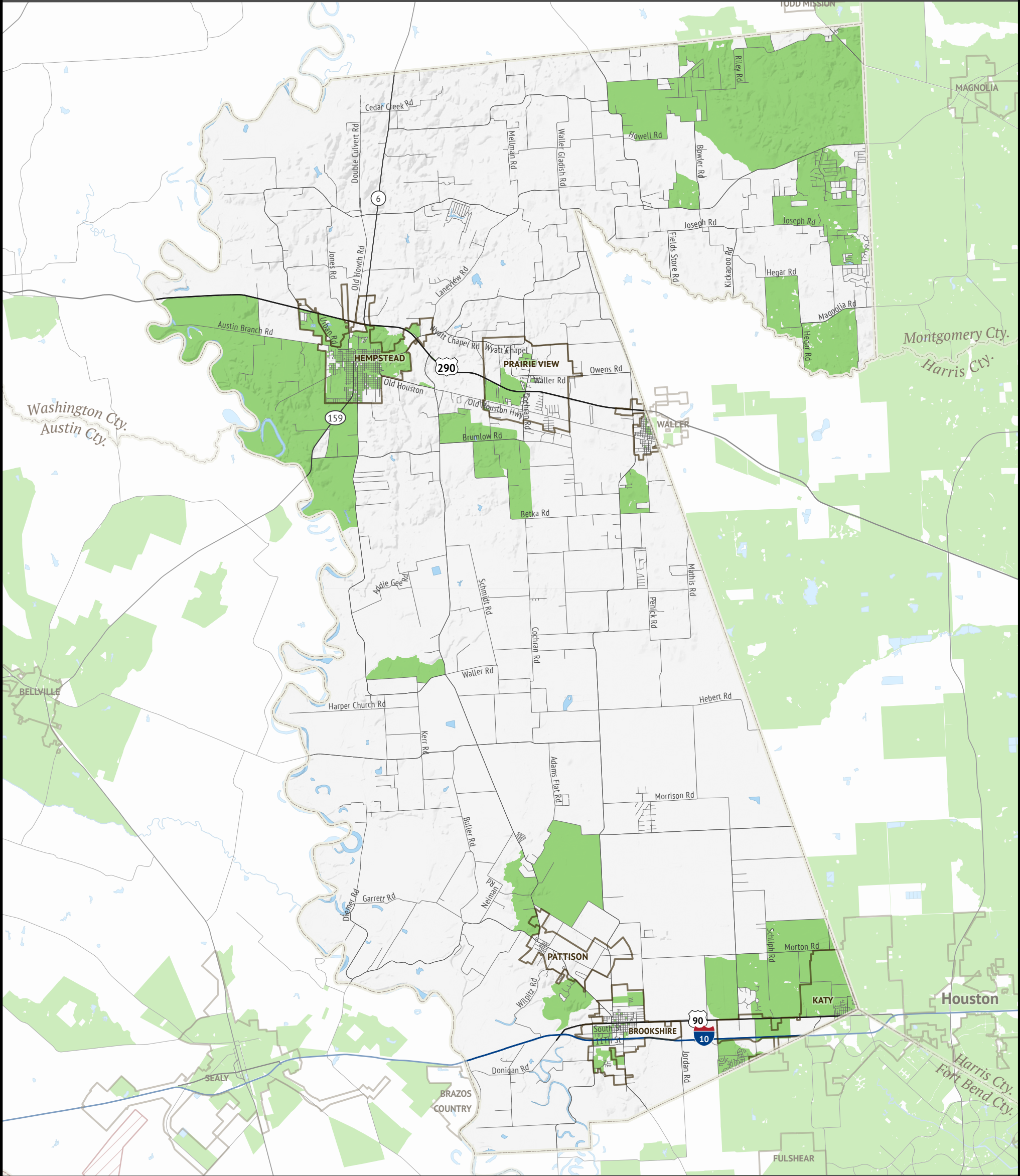
Broadband data displayed on this map are developed from a combination of direct provider outreach and data collection, FCC Form 477 broadband deployment filings, and independent research conducted by Connected Nation Texas. If a broadband provider was unwilling or unable to supply granular data and a detailed service area could not be developed, the provider's service availability is represented by FCC Form 477 data, a format which tends to be overstated.

This map is not a guarantee of internet service availability. Mobile and satellite services may also be available.






The current FCC definition of broadband is a minimum speed of 25 Mbps (Megabits per second) download and 3 Mbps upload.

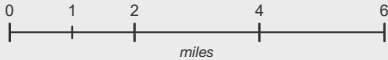
Please submit feedback regarding any possible mapping inaccuracies at <https://connectednation.org/texas/feedback>. Updates to this map will occur in July 2021.







Published December 18, 2020
Connected Nation Texas is a statewide initiative funded through the Texas Rural Funders to support all Texans in leveraging broadband.

-  County Boundary
-  Municipal Boundary
-  Federal Land
-  Water
-  Local Road



Fixed, Terrestrial Non-Mobile Broadband Service

-  Detailed Service Areas
-  FCC Service Availability



Broadband data displayed on this map are developed from a combination of direct provider outreach and data collection, FCC Form 477 broadband deployment filings, and independent research conducted by Connected Nation Texas. If a broadband provider was unwilling or unable to supply granular data and a detailed service area could not be developed, the provider's service availability is represented by FCC Form 477 data, a format which tends to be overstated.

This map is not a guarantee of internet service availability. Mobile and satellite services may also be available.

The current FCC definition of broadband is a minimum speed of 25 Mbps (Megabits per second) download and 3 Mbps upload.

Please submit feedback regarding any possible mapping inaccuracies at <https://connectednation.org/texas/feedback>. Updates to this map will occur in July 2021.

