

HOUSTON-GALVESTON AREA COUNCIL



Temporary Pedestrian/Bicycle Counters
Data Summary

Deployment Summary	
Sponsoring Agency	City of Seabrook
Deployment Period	Saturday, April 2, 2016 – Tuesday, April 19, 2016
Number of Counters Deployed	12
Facility Description	Shared-Use Paths and Sidewalks within the City of Seabrook
Locations Deployed (Houston-Galveston Area Council)	
Counter #1	Brummerhop Park Trail
Counter #2	James F. Bay Elementary School Sidewalk Connection
Counter #3	Trail at Mile Marker #2 (Seabrook Sports Complex)
Counter #4	Trail at Mile Marker #4 (Miramar Park)
Counter #5	Seabrook Ditch – North Trail
Counter #6	Seabrook Ditch – South Trail
Counter #7	Trail at Mile Marker #11 (Todville Road Trail at Water Crest)
Locations Deployed (Texas Transportation Institute)	
Counter A	Trail at Mile Marker #14 (Todville Road Trail at Red Bluff Road)
Counter B	Trail at Mile Marker #18 (Pine Gully Park)
Counter C	Trail at Mile Marker #21
Counter D	Trail at Mile Marker #24
Counter E	Trail at Mile Marker #25

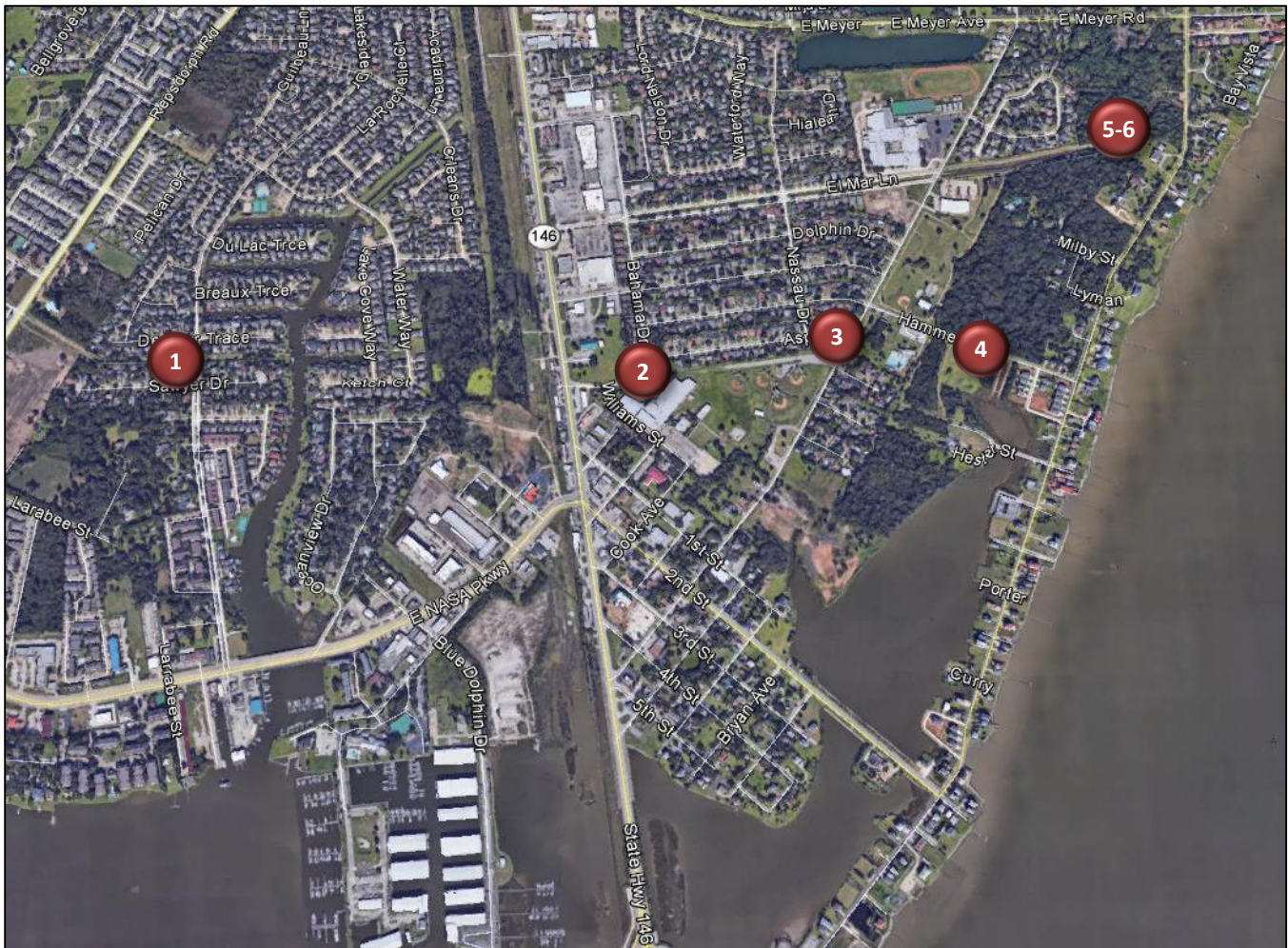
About the Temporary Pedestrian/Bicycle Counters

The Houston-Galveston Area Council (H-GAC) has temporary counters (TRAFx Infrared Trail Counters: Generation III) that can be borrowed by local governments and transportation agencies to count the number of people using off-street pedestrian and bicycle facilities. Infrared technology is used to count the number of people passing the counter. The counters do not differentiate between pedestrians and bicyclists, but count the total number of users.

The Texas Transportation Institute (TTI) owns additional temporary counters that it deploys along off-street pedestrian and bicycle facilities statewide.

Counter Locations

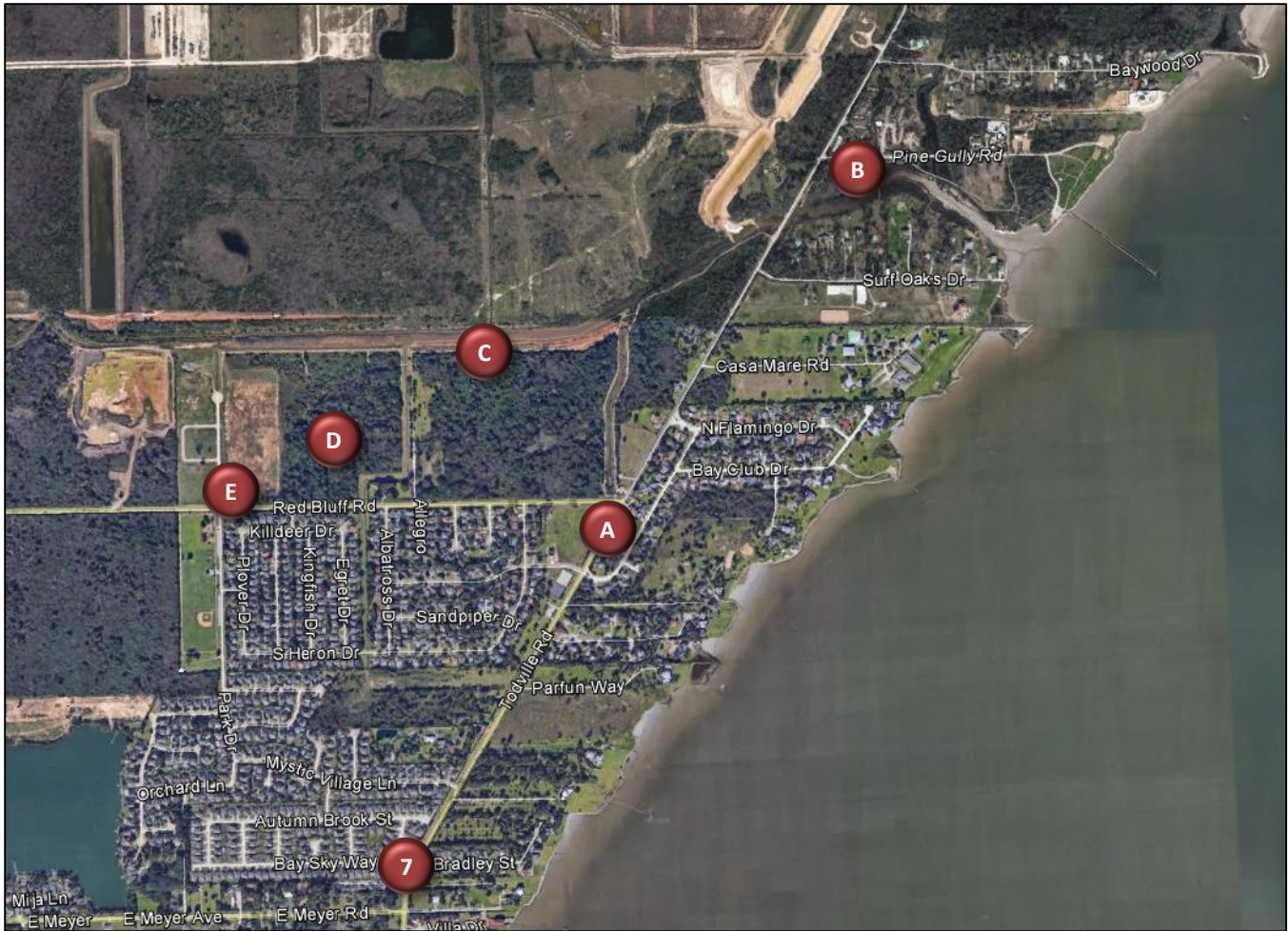
Shared-Use Paths/Trails in Central/Southern Seabrook
(Count Locations South of E. Meyer Road)



Counter	Location	Average Daily Usage	Total Users
1	Brummerhop Park Trail	50	894
2	James F. Bay Elementary School Sidewalk Connection	106	1,903
3	Trail at Mile Marker #2 (Seabrook Sports Complex)	89	1,598
4	Trail at Mile Marker #4 (Miramar Park)	42	747
5	Seabrook Ditch – North Trail	117	2,097
6	Seabrook Ditch – South Trail	159	2,860

Counter Locations

Shared-Use Paths/Trails in Northern Seabrook
(Count Locations North of E. Meyer Road)



Counter	Location	Average Daily Usage	Total Users
7	Trail at Mile Marker #11 (Todville Road Trail at Water Crest)	128	2,297
A	Trail at Mile Marker #14 (Todville Road Trail at Red Bluff Road)	117	2,113
B	Trail at Mile Marker #18 (Pine Gully Park)	213	3,835
C	Trail at Mile Marker #21	121	2,170
D	Trail at Mile Marker #24	65	1,169
E	Trail at Mile Marker #25	87	1,562

Overall Trends

- *Higher Weekend Usage*
Along all of the shared-use paths/trails, usage was higher during weekends than on weekdays. Only Counter #2 (adjacent to James F. Bay Elementary School) had higher weekday usage.
- *Evenings Busiest on Weekdays*
At most locations, usage on weekdays peaked in the late afternoon and evening. Peak usage during weekends was more variable.
- *Heavy Rains Impact Usage*
There was heavy rain on Monday, April 18 (9.92 inches of rain). That date was the least busy day at 11 of the 12 locations.
- *Students Walk to School*
Students seem to be walking to and from school. Counter #2 measured pedestrian/bicycle traffic along a sidewalk between the end of Bahama Drive and James F. Bay Elementary School. At that location, weekday usage was high in the morning and afternoon, corresponding with the arrival and departure of students. On average, 53 pedestrians/cyclists use that sidewalk connection between 7:00 a.m. and 9:00 a.m. on weekday mornings, while 27.6 pedestrians/cyclists use it between 3:00 p.m. and 4:00 p.m. (James F. Bay Elementary School opens at 7:30 a.m. and dismisses students at 3:15 p.m.).



The City of Seabrook has a well-developed network of shared-use paths/trails, which connects neighborhoods to parks, schools, and other destinations. Trailheads are located at several locations, including one along Todville Road at Pine Gully (pictured above).

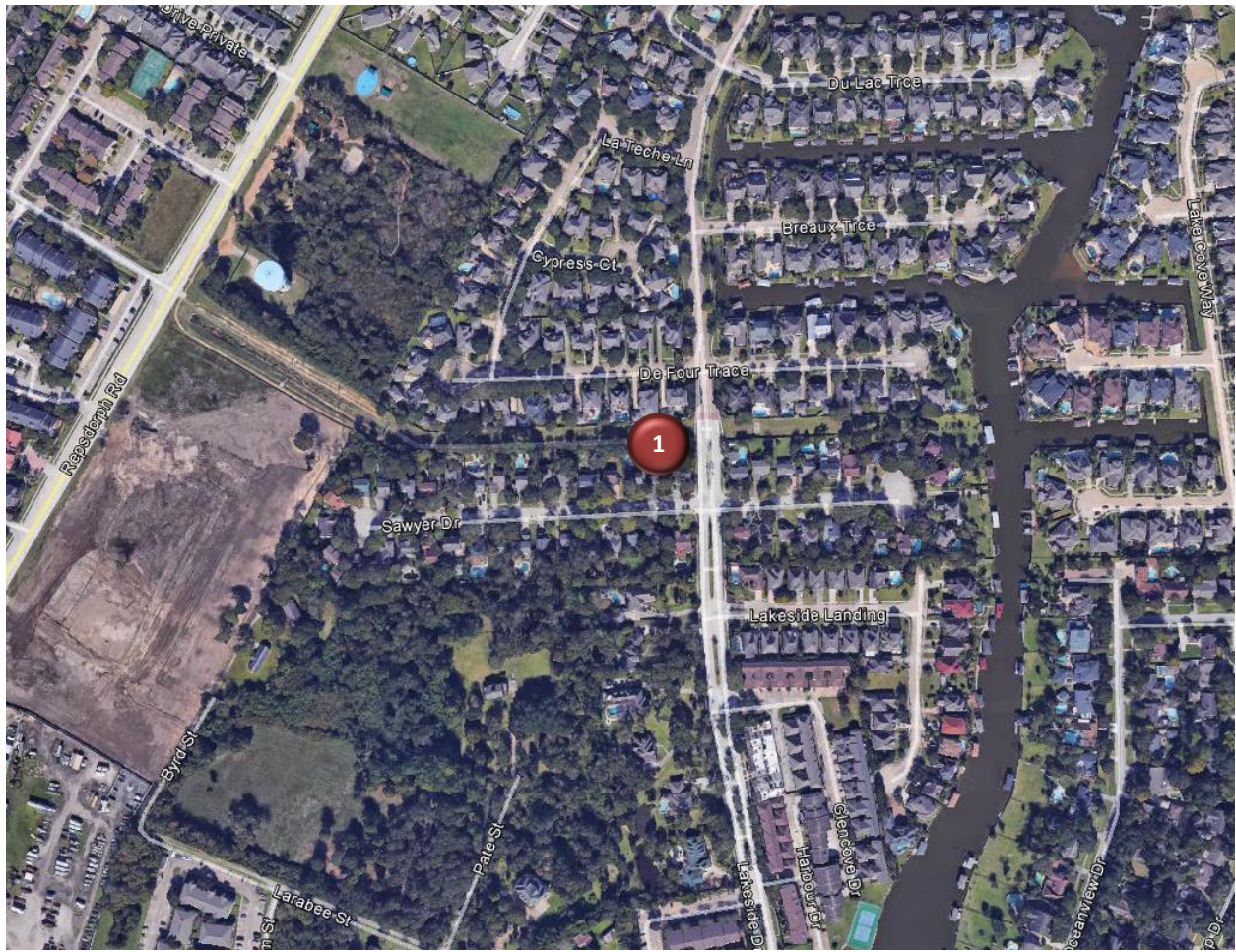
Counter #1

Brummerhop Park Trail

Location Information		
Location Name	Brummerhop Park Trail	
Location Description	Brummerhop Park Trail (shared-use path) west of Lakeside Drive	
Jurisdiction	City of Seabrook	
Agency Deployed	City of Seabrook	
GPS Coordinates	29°34'0.76"N, 95° 2'8.98"W	
Surrounding Land Uses	North	Single-Family Residential
	South	Single-Family Residential, Multi-Family Residential
	East	Single-Family Residential
	West	Single-Family Residential, Park (Brummerhop Park)
What object was device secured to?	Tree behind 2602 Sawyer Drive	
Sidewalk Width	5'	
Buffer Width	N/A (Off-Road Shared-Use Path)	
Street Width	N/A (Off-Road Shared-Use Path)	
Parallel Parking	N/A (Off-Road Shared-Use Path)	
Landscaping or Trees	Yes	
Sidewalk Pavement Type	Decomposed Granite/Gravel	
ADA Ramps	No	
Sidewalk Condition	Good (Some Unevenness/Puddling)	
Speed Limit	N/A (Off-Road Shared-Use Path)	
Street Lighting	No	
Street Traffic Volume	N/A (Off-Road Shared-Use Path)	
Transit	No	
Shade	Yes	
Have counts been collected by H-GAC at this location before?	No	

Trends
<ul style="list-style-type: none"> • Usage tends to be higher during weekends (60 users/day) than on weekdays (44 users/day). • On weekdays, usage is highest in the evening (7:00 p.m. – 8:00 p.m.). • During weekends, usage remains steady during the morning and early afternoon (8:00 a.m. – 1:00 p.m.). An increase in usage also occurs in the evening (7:00 p.m. – 8:00 p.m.).

Location Information: Map



Location Information: Photos



Image 1: Brummerhop Park Trail Facing East

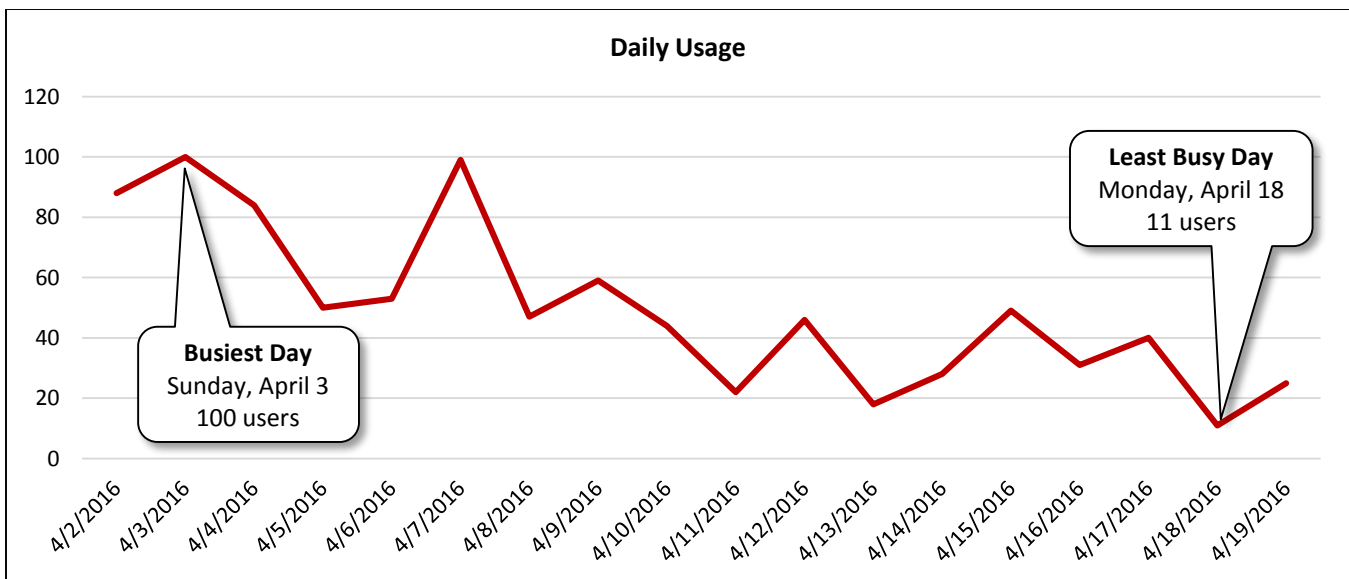


Image 2: Brummerhop Park Trail Facing West

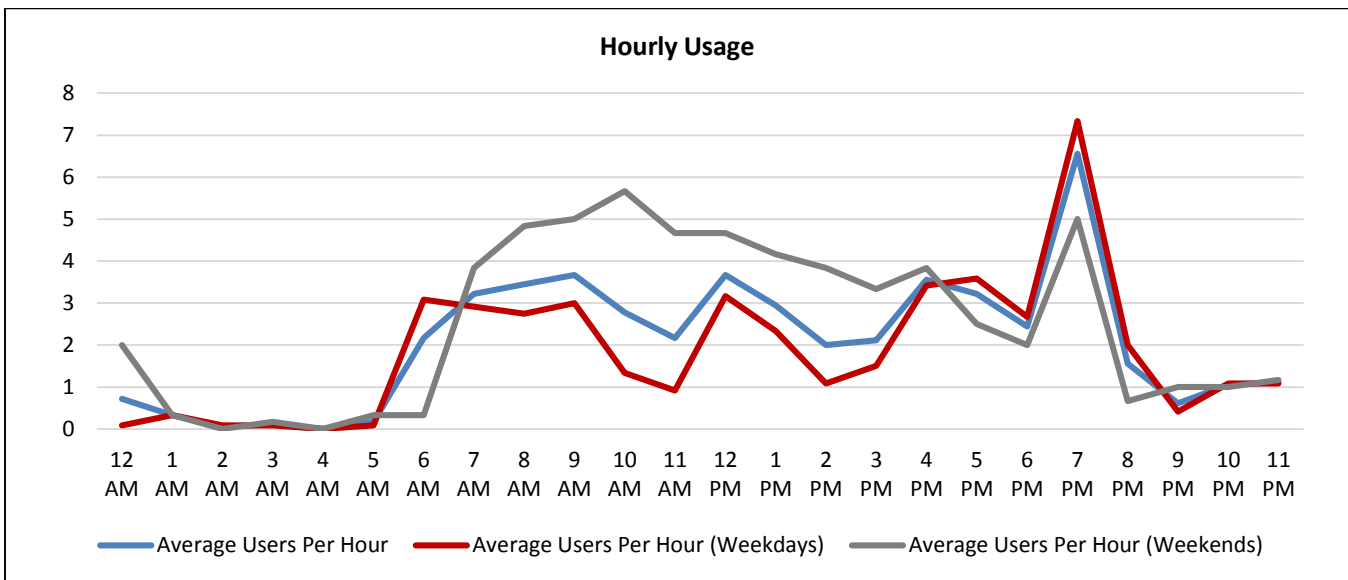
Daily Usage Brummerhop Park Trail				
Date	Users	Select Weather Data*		
		High Temperature (°F)	Low Temperature (°F)	Precipitation (inches)
Saturday, April 2, 2016	88	72	46	0
Sunday, April 3, 2016	100	74	42	0
Monday, April 4, 2016	84	80	48	0
Tuesday, April 5, 2016	50	81	50	0
Wednesday, April 6, 2016	53	79	55	T
Thursday, April 7, 2016	99	85	49	0
Friday, April 8, 2016	47	82	52	0
Saturday, April 9, 2016	59	78	54	T
Sunday, April 10, 2016	44	80	60	0.02
Monday, April 11, 2016	22	79	67	0.01
Tuesday, April 12, 2016	46	76	66	0.01
Wednesday, April 13, 2016	18	72	62	0.63
Thursday, April 14, 2016	28	76	60	0
Friday, April 15, 2016	49	79	58	0
Saturday, April 16, 2016	31	79	59	0.01
Sunday, April 17, 2016	40	76	65	0.71
Monday, April 18, 2016	11	70	64	9.92
Tuesday, April 19, 2016	25	79	65	0.02

Total	894
Average Daily Usage	50
Average Daily Usage (Weekday)	44
Average Daily Usage (Weekend)	60

*Weather conditions recorded at Hobby Airport.



Hourly Usage Brummerhop Park Trail			
Time of Day	Average Users Per Hour	Average Users Per Hour (Weekdays)	Average Users Per Hour (Weekends)
12:00 a.m.	0.7	0.1	2.0
1:00 a.m.	0.3	0.3	0.3
2:00 a.m.	0.1	0.1	0.0
3:00 a.m.	0.1	0.1	0.2
4:00 a.m.	0.0	0.0	0.0
5:00 a.m.	0.2	0.1	0.3
6:00 a.m.	2.2	3.1	0.3
7:00 a.m.	3.2	2.9	3.8
8:00 a.m.	3.4	2.8	4.8
9:00 a.m.	3.7	3.0	5.0
10:00 a.m.	2.8	1.3	5.7
11:00 a.m.	2.2	0.9	4.7
12:00 p.m.	3.7	3.2	4.7
1:00 p.m.	2.9	2.3	4.2
2:00 p.m.	2.0	1.1	3.8
3:00 p.m.	2.1	1.5	3.3
4:00 p.m.	3.6	3.4	3.8
5:00 p.m.	3.2	3.6	2.5
6:00 p.m.	2.4	2.7	2.0
7:00 p.m.	6.6	7.3	5.0
8:00 p.m.	1.6	2.0	0.7
9:00 p.m.	0.6	0.4	1.0
10:00 p.m.	1.1	1.1	1.0
11:00 p.m.	1.1	1.1	1.2



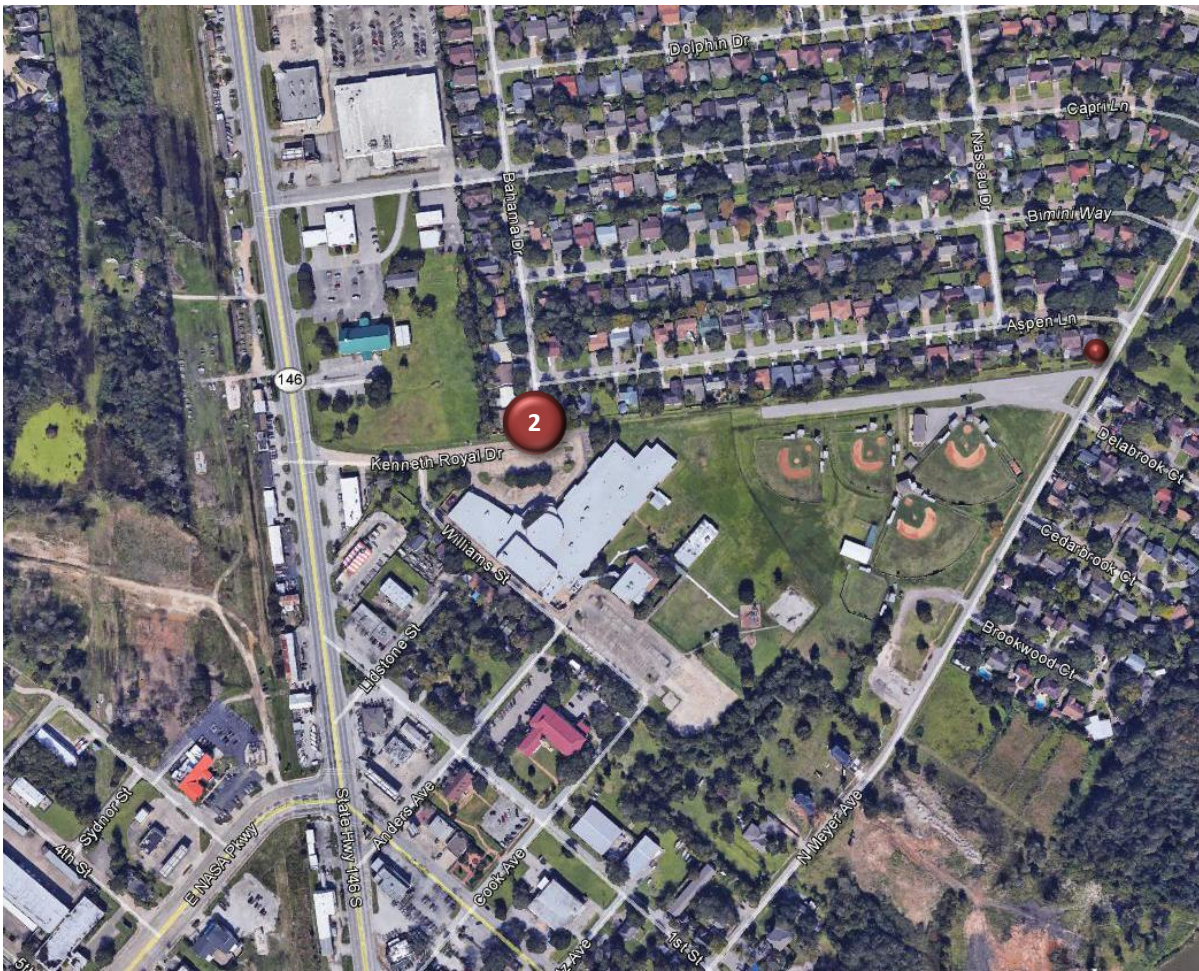
Counter #2

James F. Bay Elementary School Sidewalk Connection

Location Information		
Location Name	James F. Bay Elementary School Sidewalk Connection	
Location Description	Sidewalk between the end of Bahama Drive and James F. Bay Elementary School	
Jurisdiction	City of Seabrook	
Agency Deployed	City of Seabrook	
GPS Coordinates	29°34'0.11"N, 95° 1'27.25"W	
Surrounding Land Uses	North	Single-Family Residential, Commercial/Retail
	South	James F. Bay Elementary School, Single-Family Residential, Institutional (Seabrook City Hall)
	East	Single-Family Residential, Park (Seabrook Sports Complex)
	West	Single-Family Residential, Institutional (Church), Commercial/Retail
What object was device secured to?	Post of Barricade at End of Bahama Drive	
Sidewalk Width	4'	
Buffer Width	6'	
Street Width	Two-Lane Undivided Roadway	
Parallel Parking	Yes	
Landscaping or Trees	Yes	
Sidewalk Pavement Type	Concrete	
ADA Ramps	Yes	
Sidewalk Condition	Fair (Some Unevenness)	
Speed Limit	30 miles per hour	
Street Lighting	Yes	
Street Traffic Volume	N/A	
Transit	No	
Shade	Yes	
Have counts been collected by H-GAC at this location before?	No	

Trends
<ul style="list-style-type: none"> • Usage tends to be much higher on weekdays (129 users/day) than during weekends (69 users/day). • On weekdays, usage is highest in the morning (7:00 a.m. – 9:00 a.m.) and in the late afternoon (3:00 p.m. – 4:00 p.m.). Nearby James F. Bay Elementary School opens at 7:30 a.m. and dismisses students at 3:15 p.m. • During weekends, usage is highest in the evening (7:00 p.m. – 8:00 p.m.).

Location Information: Map



Location Information: Photos

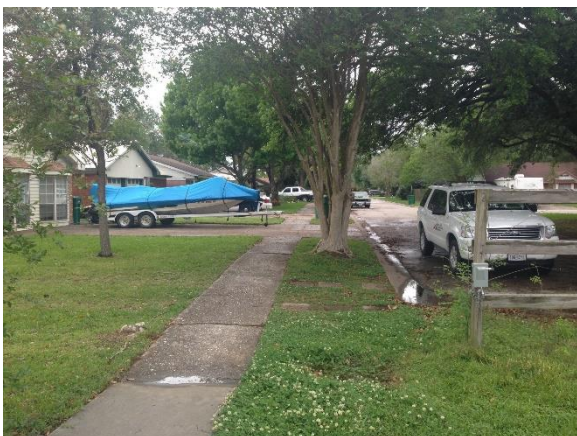


Image 3: School Sidewalk Connection Facing North

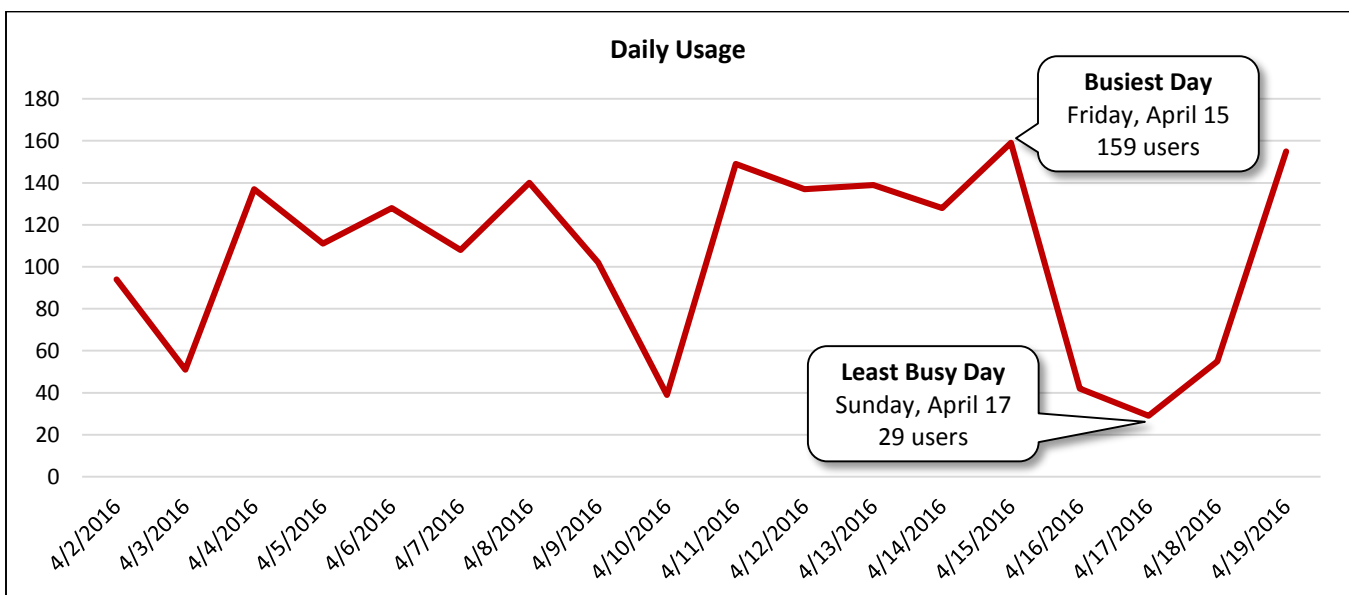


Image 4: School Sidewalk Connection Facing South

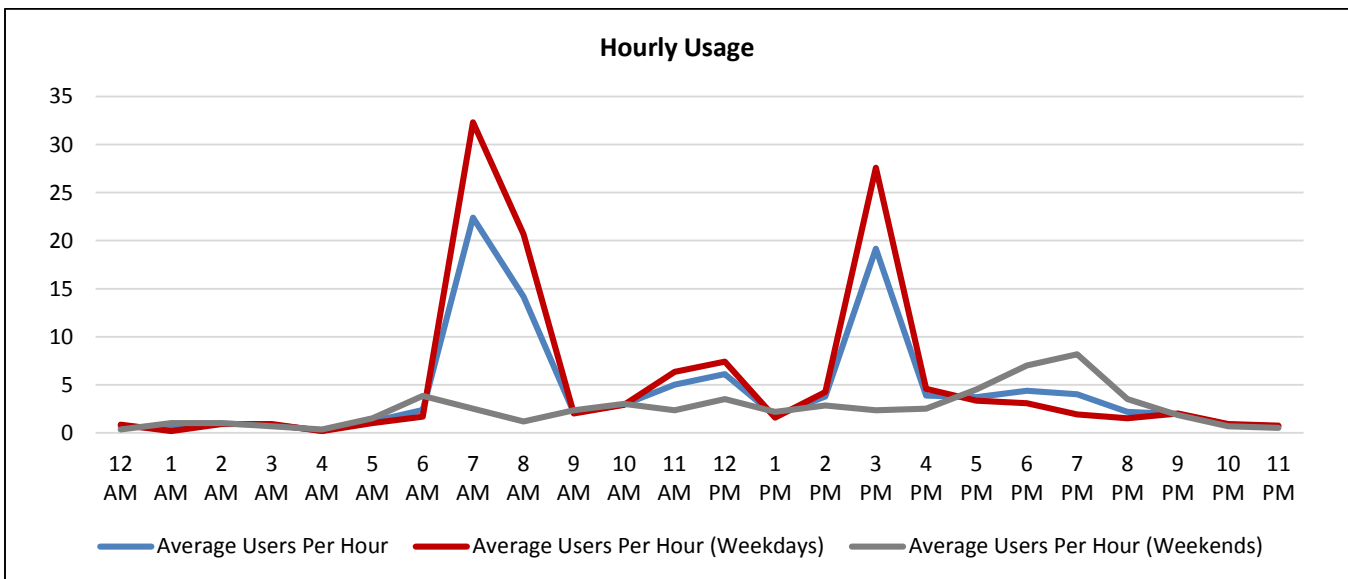
Daily Usage James F. Bay Elementary School Sidewalk Connection				
Date	Users	Select Weather Data*		
		High Temperature (°F)	Low Temperature (°F)	Precipitation (inches)
Saturday, April 2, 2016	94	72	46	0
Sunday, April 3, 2016	51	74	42	0
Monday, April 4, 2016	137	80	48	0
Tuesday, April 5, 2016	111	81	50	0
Wednesday, April 6, 2016	128	79	55	T
Thursday, April 7, 2016	108	85	49	0
Friday, April 8, 2016	140	82	52	0
Saturday, April 9, 2016	102	78	54	T
Sunday, April 10, 2016	39	80	60	0.02
Monday, April 11, 2016	149	79	67	0.01
Tuesday, April 12, 2016	137	76	66	0.01
Wednesday, April 13, 2016	139	72	62	0.63
Thursday, April 14, 2016	128	76	60	0
Friday, April 15, 2016	159	79	58	0
Saturday, April 16, 2016	42	79	59	0.01
Sunday, April 17, 2016	29	76	65	0.71
Monday, April 18, 2016	55	70	64	9.92
Tuesday, April 19, 2016	155	79	65	0.02

Total	1,903
Average Daily Usage	106
Average Daily Usage (Weekday)	129
Average Daily Usage (Weekend)	60

*Weather conditions recorded at Hobby Airport.



Hourly Usage James F. Bay Elementary School Sidewalk Connection			
Time of Day	Average Users Per Hour	Average Users Per Hour (Weekdays)	Average Users Per Hour (Weekends)
12:00 a.m.	0.7	0.8	0.3
1:00 a.m.	0.4	0.2	1.0
2:00 a.m.	0.9	0.9	1.0
3:00 a.m.	0.8	0.9	0.7
4:00 a.m.	0.2	0.2	0.3
5:00 a.m.	1.2	1.0	1.5
6:00 a.m.	2.4	1.7	3.8
7:00 a.m.	22.4	32.3	2.5
8:00 a.m.	14.2	20.7	1.2
9:00 a.m.	2.1	2.0	2.3
10:00 a.m.	2.9	2.9	3.0
11:00 a.m.	5.0	6.3	2.3
12:00 p.m.	6.1	7.4	3.5
1:00 p.m.	1.8	1.6	2.2
2:00 p.m.	3.8	4.3	2.8
3:00 p.m.	19.2	27.6	2.3
4:00 p.m.	3.9	4.6	2.5
5:00 p.m.	3.7	3.3	4.5
6:00 p.m.	4.4	3.1	7.0
7:00 p.m.	4.0	1.9	8.2
8:00 p.m.	2.2	1.5	3.5
9:00 p.m.	1.9	2.0	1.8
10:00 p.m.	0.8	0.9	0.7
11:00 p.m.	0.7	0.8	0.5



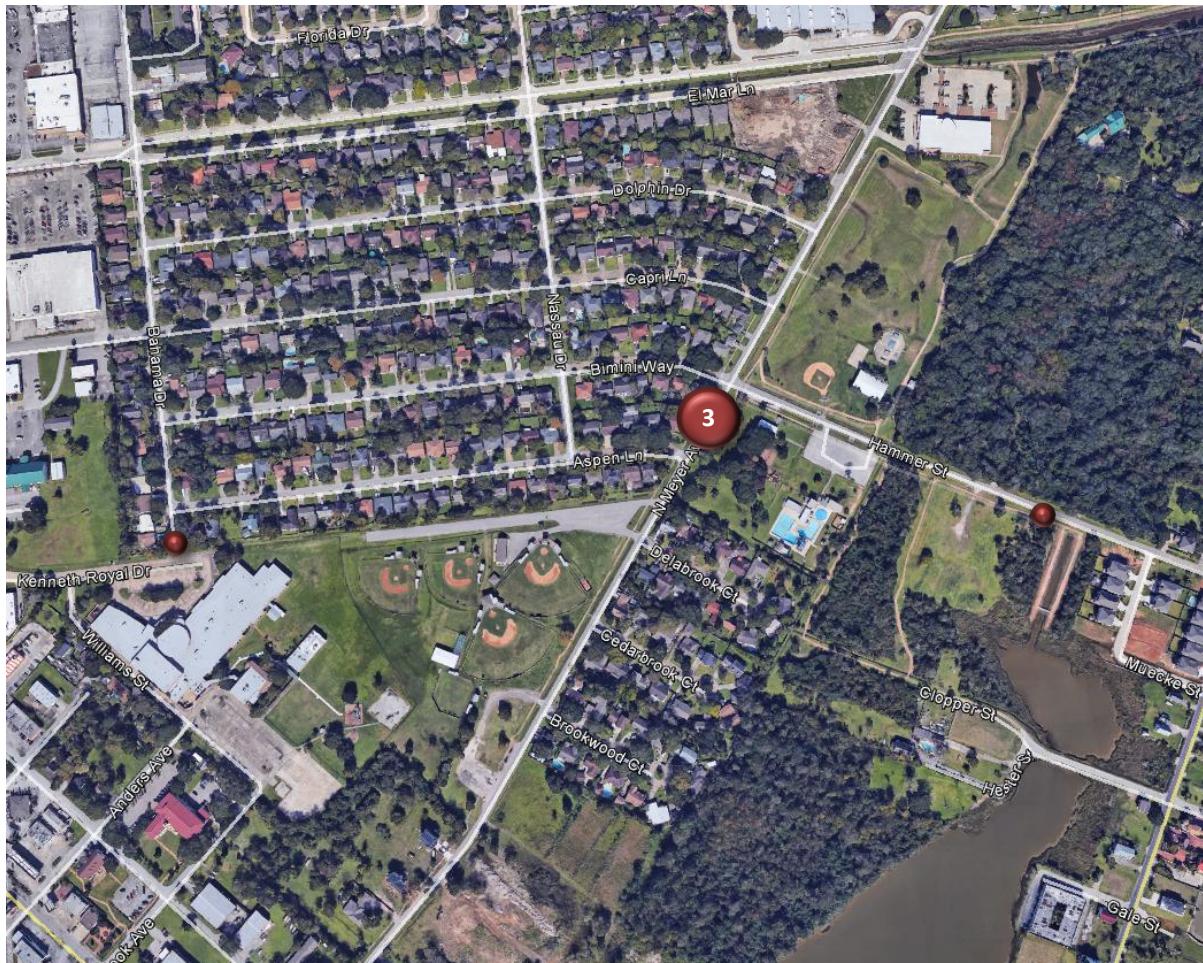
Counter #3

Trail at Mile Marker #2 (Seabrook Sports Complex)

Location Information		
Location Name	Trail at Mile Marker #2 (Seabrook Sports Complex)	
Location Description	Shared-use path along N. Meyer Avenue at the northeastern corner of the Seabrook Sports Complex near Mile Marker #2	
Jurisdiction	City of Seabrook	
Agency Deployed	City of Seabrook	
GPS Coordinates	29°34'2.01"N, 95° 1'10.10"W	
Surrounding Land Uses	North	Single-Family Residential, Parks (Miramar Park and Rex L. Meador Park)
	South	Park (Seabrook Sports Complex), Single-Family Residential
	East	Park (Miramar Park), Single-Family Residential
	West	Single-Family Residential, Park (Seabrook Sports Complex), James F. Bay Elementary School
What object was device secured to?	Utility Pole (First Pole South of Aspen Lane)	
Sidewalk Width	5'	
Buffer Width	16'	
Street Width	Two-Lane Undivided Roadway	
Parallel Parking	No	
Landscaping or Trees	No	
Sidewalk Pavement Type	Decomposed Granite/Gravel	
ADA Ramps	No	
Sidewalk Condition	Good	
Speed Limit	30 miles per hour	
Street Lighting	Yes	
Street Traffic Volume	N/A	
Transit	No	
Shade	No	
Have counts been collected by H-GAC at this location before?	No	
Note	Just north of Counter #3, the path becomes a concrete sidewalk. H-GAC's Trash Bash event was held April 2, 2016 (8:00 a.m. – 1:30 p.m.) at nearby James F. Bay Elementary School. Almost 300 participants met at that location and boarded buses to visit other sites. Bayside Area Little League's Opening Day 2016 was held the same day at Seabrook Sports Complex.	

Trends
<ul style="list-style-type: none"> Usage tends to be higher during weekends (150 users/day) than on weekdays (58 users/day). There was extremely high usage on Sunday, April 2, due to H-GAC's Trash Bash event nearby. If data collected on that date is disregarded, average daily usage is lower during weekends (52 users/day) than on weekdays (58 users/day). On weekdays, usage is highest in the late afternoon (3:00 p.m. – 4:00 p.m.). On weekends, usage is highest in the morning (8:00 a.m. – 10:00 a.m.). This may be influenced by H-GAC's Trash Bash event in the area, which began at 8:00 a.m.

Location Information: Map



Location Information: Photos



Image 5: Trail at Mile Marker #2 Facing North



Image 6: Trail at Mile Marker #2 Facing South

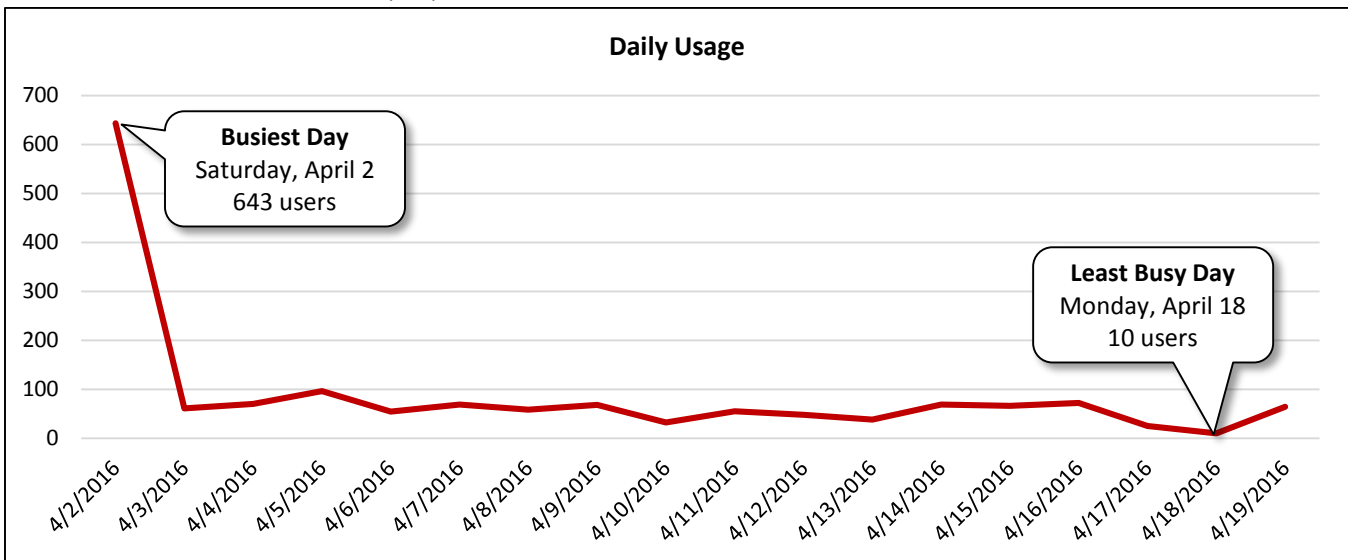
Daily Usage
Trail at Mile Marker #2 (Seabrook Sports Complex)

Date	Users	Select Weather Data*		
		High Temperature (°F)	Low Temperature (°F)	Precipitation (inches)
Saturday, April 2, 2016	643	72	46	0
Sunday, April 3, 2016	61	74	42	0
Monday, April 4, 2016	70	80	48	0
Tuesday, April 5, 2016	96	81	50	0
Wednesday, April 6, 2016	54	79	55	T
Thursday, April 7, 2016	69	85	49	0
Friday, April 8, 2016	58	82	52	0
Saturday, April 9, 2016	68	78	54	T
Sunday, April 10, 2016	32	80	60	0.02
Monday, April 11, 2016	55	79	67	0.01
Tuesday, April 12, 2016	48	76	66	0.01
Wednesday, April 13, 2016	38	72	62	0.63
Thursday, April 14, 2016	69	76	60	0
Friday, April 15, 2016	66	79	58	0
Saturday, April 16, 2016	72	79	59	0.01
Sunday, April 17, 2016	25	76	65	0.71
Monday, April 18, 2016	10	70	64	9.92
Tuesday, April 19, 2016	64	79	65	0.02

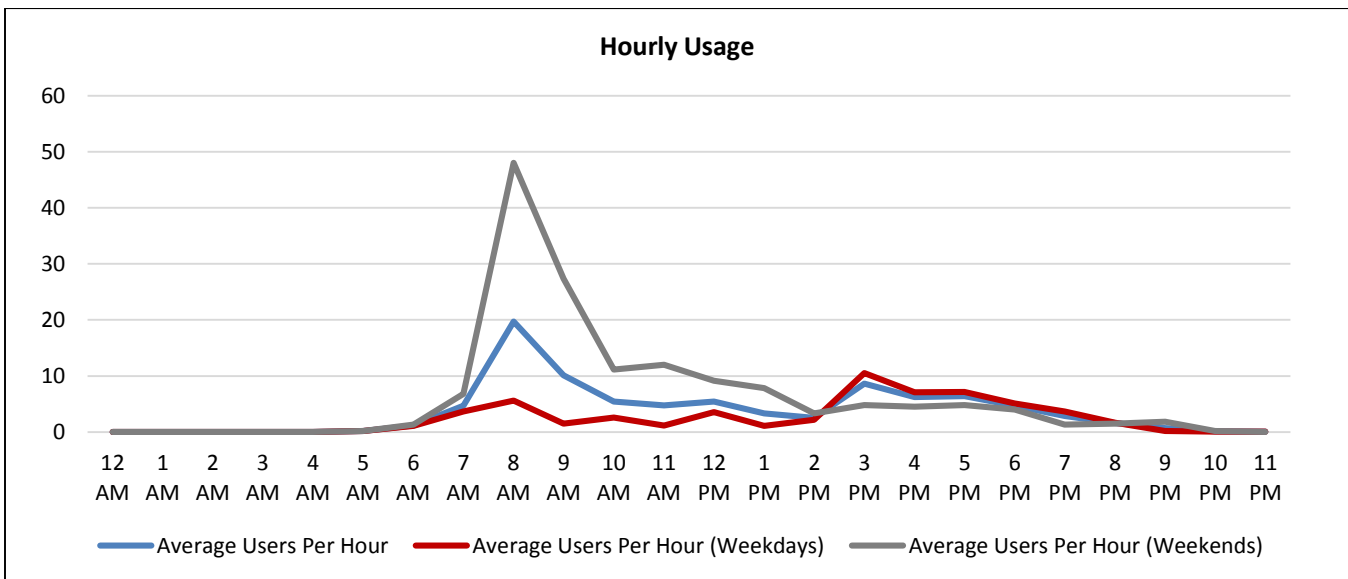
Total	1,598
Average Daily Usage	89
Average Daily Usage (Weekday)	58
Average Daily Usage (Weekend)	150

Notes
H-GAC's Trash Bash event was held April 2, 2016 at nearby James Bay Elementary School from 8:00 a.m. - 1:30 p.m. Participants met at that location and boarded buses to visit other sites. Bayside Area Little League's Opening Day 2016 was held the same day at nearby Seabrook Sports Complex.

*Weather conditions recorded at Hobby Airport.



Hourly Usage			
Trail at Mile Marker #2 (Seabrook Sports Complex)			
Time of Day	Average Users Per Hour	Average Users Per Hour (Weekdays)	Average Users Per Hour (Weekends)
12:00 a.m.	0.0	0.0	0.0
1:00 a.m.	0.0	0.0	0.0
2:00 a.m.	0.0	0.0	0.0
3:00 a.m.	0.0	0.0	0.0
4:00 a.m.	0.0	0.0	0.0
5:00 a.m.	0.2	0.2	0.2
6:00 a.m.	1.2	1.1	1.3
7:00 a.m.	4.7	3.7	6.8
8:00 a.m.	19.7	5.6	48.0
9:00 a.m.	10.1	1.5	27.3
10:00 a.m.	5.4	2.6	11.2
11:00 a.m.	4.8	1.2	12.0
12:00 p.m.	5.4	3.6	9.2
1:00 p.m.	3.3	1.1	7.8
2:00 p.m.	2.6	2.2	3.3
3:00 p.m.	8.6	10.5	4.8
4:00 p.m.	6.2	7.1	4.5
5:00 p.m.	6.4	7.2	4.8
6:00 p.m.	4.7	5.1	4.0
7:00 p.m.	2.9	3.7	1.3
8:00 p.m.	1.6	1.7	1.5
9:00 p.m.	0.7	0.2	1.8
10:00 p.m.	0.1	0.1	0.2
11:00 p.m.	0.1	0.1	0.0



Counter #4

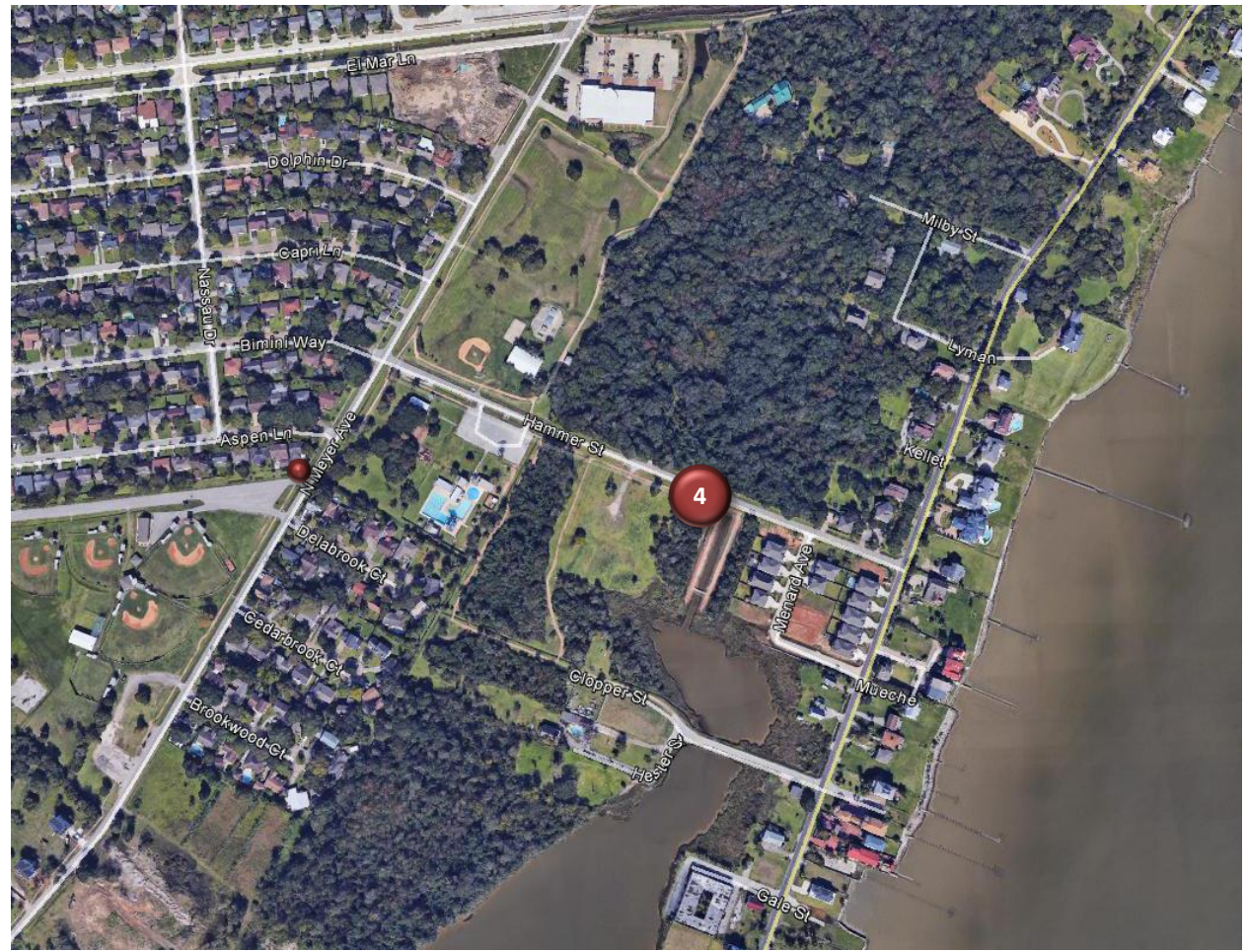
Trail at Mile Marker #4 (Miramar Park)

Location Information		
Location Name	Trail at Mile Marker #4 (Miramar Park)	
Location Description	Shared-use path along the south side of Hammer Street at Miramar Park near Mile Marker #4	
Jurisdiction	City of Seabrook	
Agency Deployed	City of Seabrook	
GPS Coordinates	29°34'1.36"N, 95° 0'56.23"W	
Surrounding Land Uses	North	Vacant Land
	South	Park (Miramar Park), Open Water/Wetlands
	East	Single-Family Residential
	West	Parks (Miramar Park and Rex L. Meador Park)
What object was device secured to?	Utility Pole	
Sidewalk Width	6'	
Buffer Width	15' (Varies)	
Street Width	Two-Lane Undivided Roadway	
Parallel Parking	No	
Landscaping or Trees	Yes	
Sidewalk Pavement Type	Decomposed Granite/Gravel	
ADA Ramps	No	
Sidewalk Condition	Good (Some Puddling)	
Speed Limit	30 miles per hour	
Street Lighting	No	
Street Traffic Volume	N/A	
Transit	No	
Shade	No	
Have counts been collected by H-GAC at this location before?	No	

Trends

- Usage tends to be higher during weekends (61 users/day) than on weekdays (32 users/day).
- On weekdays, usage is highest in the evening (7:00 p.m. – 8:00 p.m.).
- During weekends, usage is highest in the evening (6:00 p.m. – 7:00 p.m.).

Location Information: Map



Location Information: Photos



Image 7: Trail at Mile Marker #4 Facing East

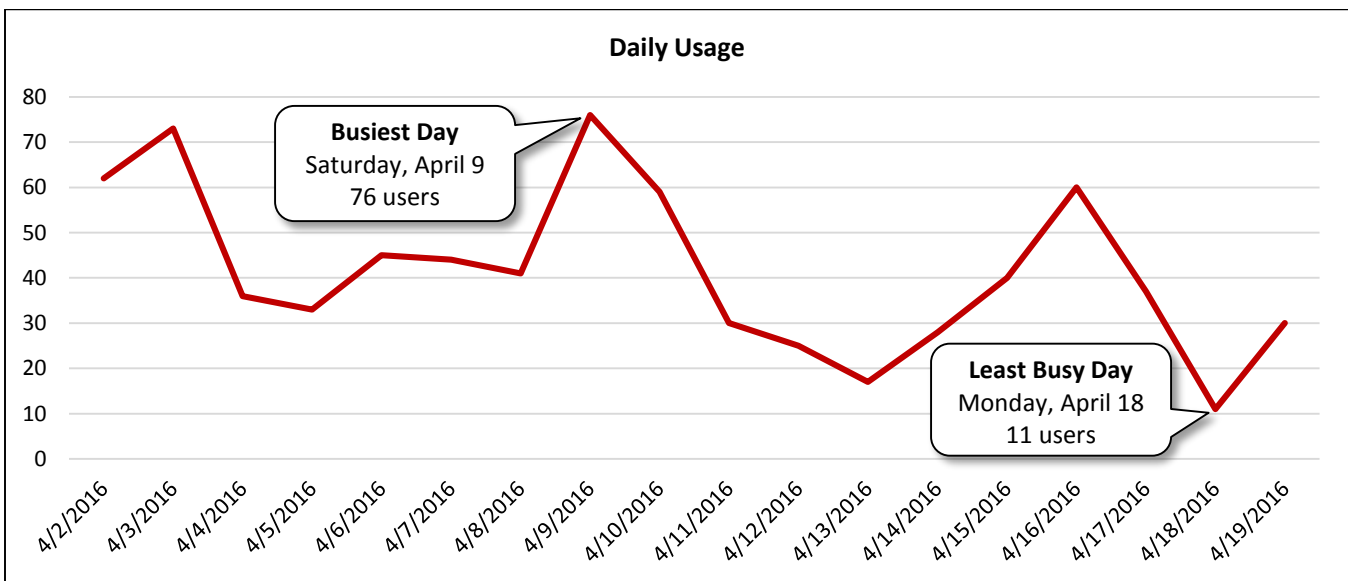


Image 8: Trail at Mile Marker #4 Facing West

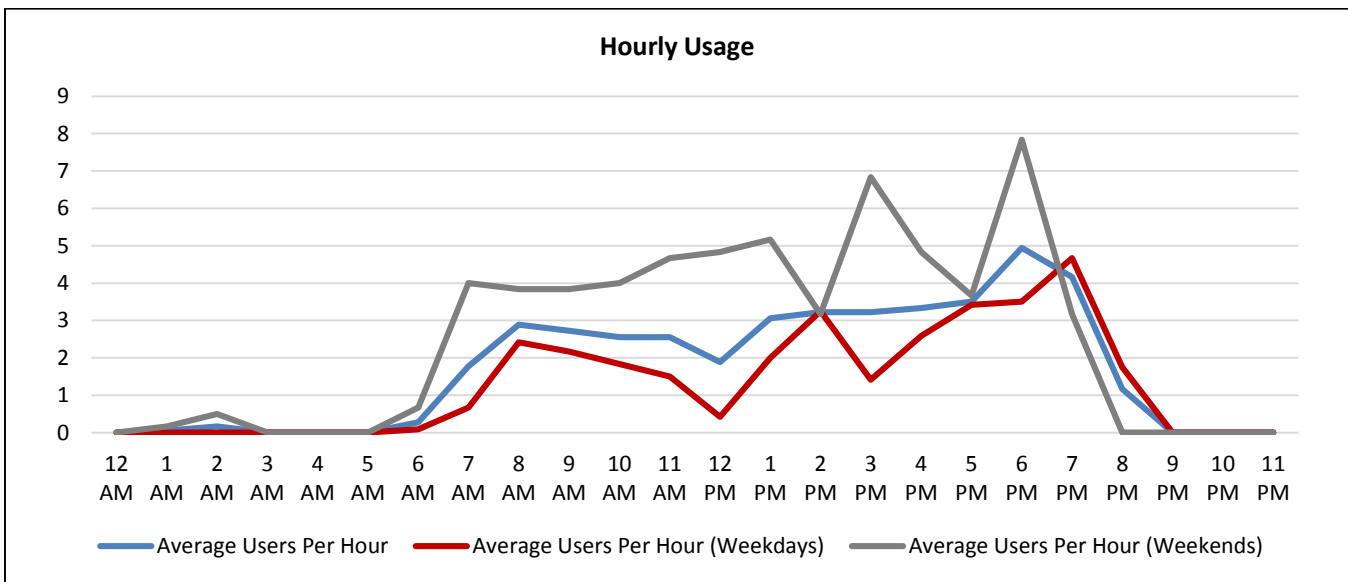
Daily Usage				
Trail at Mile Marker #4 (Miramar Park)				
Date	Users	Select Weather Data*		
		High Temperature (°F)	Low Temperature (°F)	Precipitation (inches)
Saturday, April 2, 2016	62	72	46	0
Sunday, April 3, 2016	73	74	42	0
Monday, April 4, 2016	36	80	48	0
Tuesday, April 5, 2016	33	81	50	0
Wednesday, April 6, 2016	45	79	55	T
Thursday, April 7, 2016	44	85	49	0
Friday, April 8, 2016	41	82	52	0
Saturday, April 9, 2016	76	78	54	T
Sunday, April 10, 2016	59	80	60	0.02
Monday, April 11, 2016	30	79	67	0.01
Tuesday, April 12, 2016	25	76	66	0.01
Wednesday, April 13, 2016	17	72	62	0.63
Thursday, April 14, 2016	28	76	60	0
Friday, April 15, 2016	40	79	58	0
Saturday, April 16, 2016	60	79	59	0.01
Sunday, April 17, 2016	37	76	65	0.71
Monday, April 18, 2016	11	70	64	9.92
Tuesday, April 19, 2016	30	79	65	0.02

Total	747
Average Daily Usage	42
Average Daily Usage (Weekday)	32
Average Daily Usage (Weekend)	61

*Weather conditions recorded at Hobby Airport.



Hourly Usage Trail at Mile Marker #4 (Miramar Park)			
Time of Day	Average Users Per Hour	Average Users Per Hour (Weekdays)	Average Users Per Hour (Weekends)
12:00 a.m.	0.0	0.0	0.0
1:00 a.m.	0.1	0.0	0.2
2:00 a.m.	0.2	0.0	0.5
3:00 a.m.	0.0	0.0	0.0
4:00 a.m.	0.0	0.0	0.0
5:00 a.m.	0.0	0.0	0.0
6:00 a.m.	0.3	0.1	0.7
7:00 a.m.	1.8	0.7	4.0
8:00 a.m.	2.9	2.4	3.8
9:00 a.m.	2.7	2.2	3.8
10:00 a.m.	2.6	1.8	4.0
11:00 a.m.	2.6	1.5	4.7
12:00 p.m.	1.9	0.4	4.8
1:00 p.m.	3.1	2.0	5.2
2:00 p.m.	3.2	3.3	3.2
3:00 p.m.	3.2	1.4	6.8
4:00 p.m.	3.3	2.6	4.8
5:00 p.m.	3.5	3.4	3.7
6:00 p.m.	4.9	3.5	7.8
7:00 p.m.	4.2	4.7	3.2
8:00 p.m.	1.2	1.8	0.0
9:00 p.m.	0.0	0.0	0.0
10:00 p.m.	0.0	0.0	0.0
11:00 p.m.	0.0	0.0	0.0



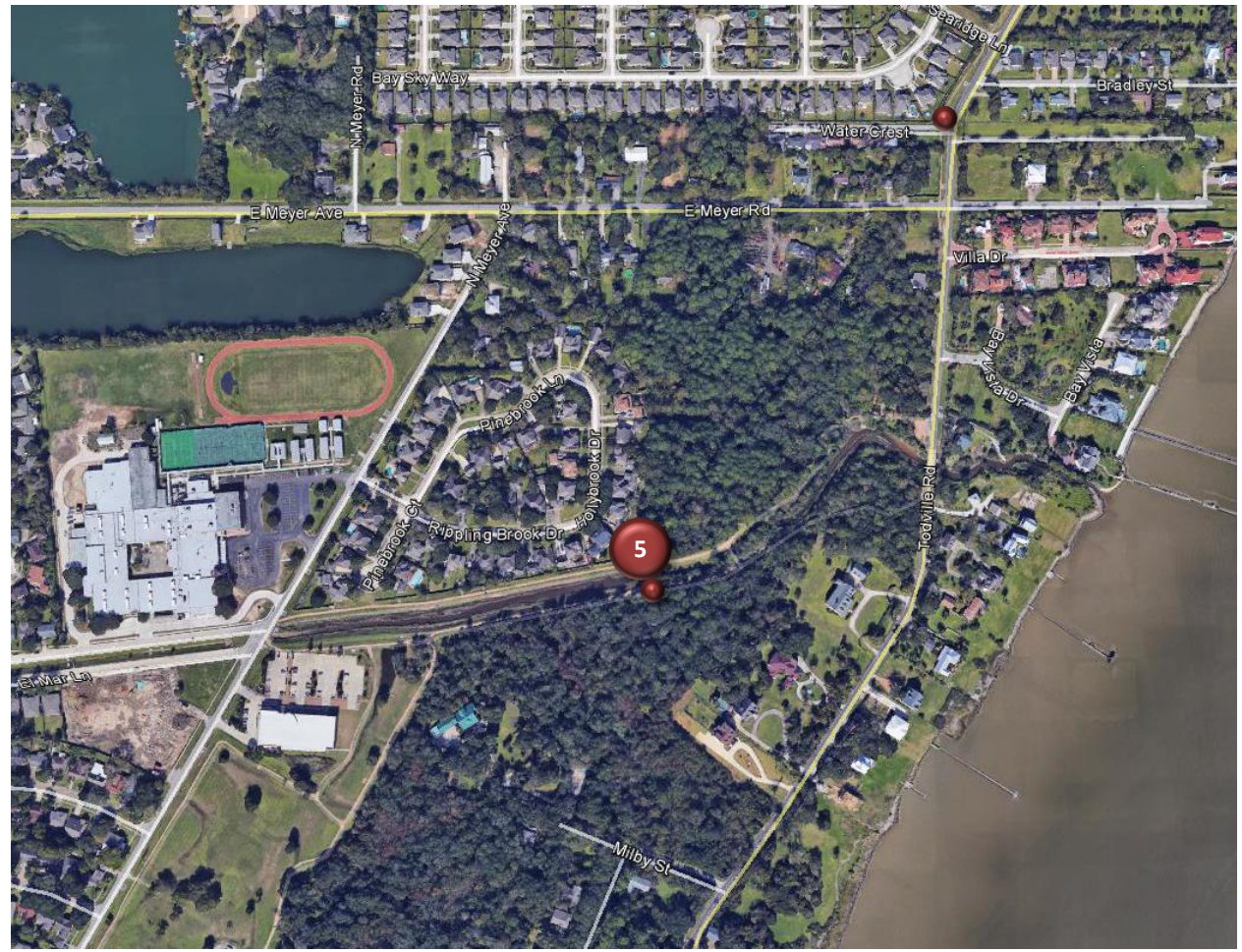
Counter #5

Seabrook Ditch – North Trail

Location Information		
Location Name	Seabrook Ditch – North Trail	
Location Description	Shared-use path connecting Hester Garden Park and Evelyn Meador Library that runs along the north side of the adjacent ditch/waterway	
Jurisdiction	City of Seabrook	
Agency Deployed	City of Seabrook	
GPS Coordinates	29°34'18.47"N, 95° 0'48.16"W	
Surrounding Land Uses	North	Vacant Land, Single-Family Residential
	South	Vacant Land, Single-Family Residential
	East	Vacant Land, Park (Hester Garden Park), Single-Family Residential
	West	Single-Family Residential, Evelyn Meador Library, Seabrook Intermediate School
What object was device secured to?	Pole along the north side of the shared-use path behind 2505 Hollybrook Drive	
Sidewalk Width	5'	
Buffer Width	N/A (Off-Road Shared-Use Path)	
Street Width	N/A (Off-Road Shared-Use Path)	
Parallel Parking	N/A (Off-Road Shared-Use Path)	
Landscaping or Trees	Yes	
Sidewalk Pavement Type	Decomposed Granite/Gravel	
ADA Ramps	No	
Sidewalk Condition	Good	
Speed Limit	N/A (Off-Road Shared-Use Path)	
Street Lighting	No	
Street Traffic Volume	N/A (Off-Road Shared-Use Path)	
Transit	No	
Shade	Intermittent	
Have counts been collected by H-GAC at this location before?	No	

Trends
<ul style="list-style-type: none"> • Usage tends to be higher during weekends (137 users/day) than on weekdays (106 users/day). • On weekdays, usage is highest in the evening (6:00 p.m. – 7:00 p.m.). • During weekends, usage is highest in the morning (8:00 a.m. – 11:00 a.m.).

Location Information: Map



Location Information: Photos



Image 9: Trail North of Seabrook Ditch Facing East

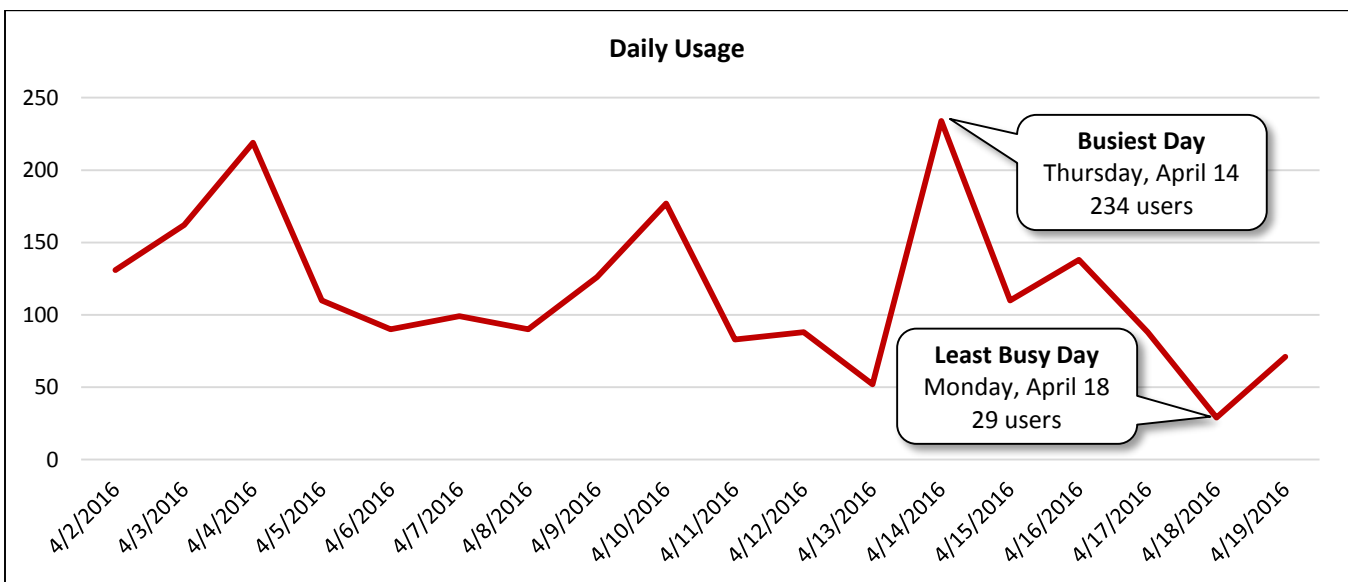


Image 10: Trail North of Seabrook Ditch Facing West

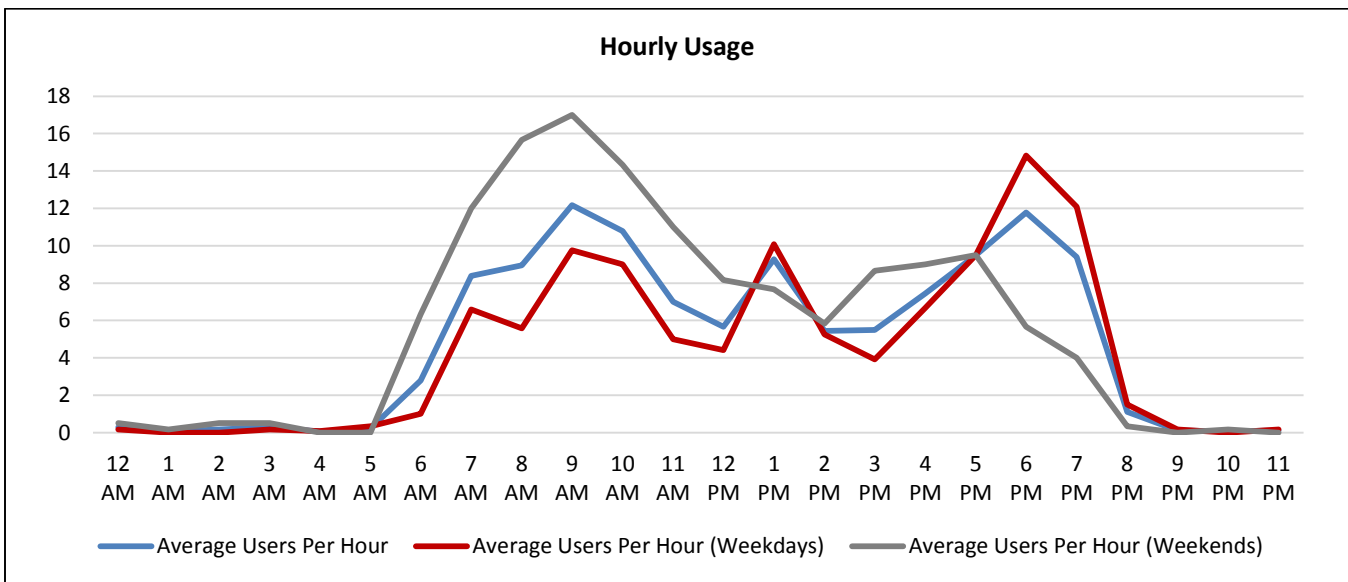
Daily Usage Seabrook Ditch – North Trail				
Date	Users	Select Weather Data*		
		High Temperature (°F)	Low Temperature (°F)	Precipitation (inches)
Saturday, April 2, 2016	131	72	46	0
Sunday, April 3, 2016	162	74	42	0
Monday, April 4, 2016	219	80	48	0
Tuesday, April 5, 2016	110	81	50	0
Wednesday, April 6, 2016	90	79	55	T
Thursday, April 7, 2016	99	85	49	0
Friday, April 8, 2016	90	82	52	0
Saturday, April 9, 2016	126	78	54	T
Sunday, April 10, 2016	177	80	60	0.02
Monday, April 11, 2016	83	79	67	0.01
Tuesday, April 12, 2016	88	76	66	0.01
Wednesday, April 13, 2016	52	72	62	0.63
Thursday, April 14, 2016	234	76	60	0
Friday, April 15, 2016	110	79	58	0
Saturday, April 16, 2016	138	79	59	0.01
Sunday, April 17, 2016	88	76	65	0.71
Monday, April 18, 2016	29	70	64	9.92
Tuesday, April 19, 2016	71	79	65	0.02

Total	2,097
Average Daily Usage	117
Average Daily Usage (Weekday)	106
Average Daily Usage (Weekend)	137

*Weather conditions recorded at Hobby Airport.



Hourly Usage Seabrook Ditch – North Trail			
Time of Day	Average Users Per Hour	Average Users Per Hour (Weekdays)	Average Users Per Hour (Weekends)
12:00 a.m.	0.3	0.2	0.5
1:00 a.m.	0.1	0.0	0.2
2:00 a.m.	0.2	0.0	0.5
3:00 a.m.	0.3	0.2	0.5
4:00 a.m.	0.1	0.1	0.0
5:00 a.m.	0.2	0.3	0.0
6:00 a.m.	2.8	1.0	6.3
7:00 a.m.	8.4	6.6	12.0
8:00 a.m.	8.9	5.6	15.7
9:00 a.m.	12.2	9.8	17.0
10:00 a.m.	10.8	9.0	14.3
11:00 a.m.	7.0	5.0	11.0
12:00 p.m.	5.7	4.4	8.2
1:00 p.m.	9.3	10.1	7.7
2:00 p.m.	5.4	5.3	5.8
3:00 p.m.	5.5	3.9	8.7
4:00 p.m.	7.4	6.7	9.0
5:00 p.m.	9.5	9.5	9.5
6:00 p.m.	11.8	14.8	5.7
7:00 p.m.	9.4	12.1	4.0
8:00 p.m.	1.1	1.5	0.3
9:00 p.m.	0.1	0.2	0.0
10:00 p.m.	0.1	0.0	0.2
11:00 p.m.	0.1	0.2	0.0



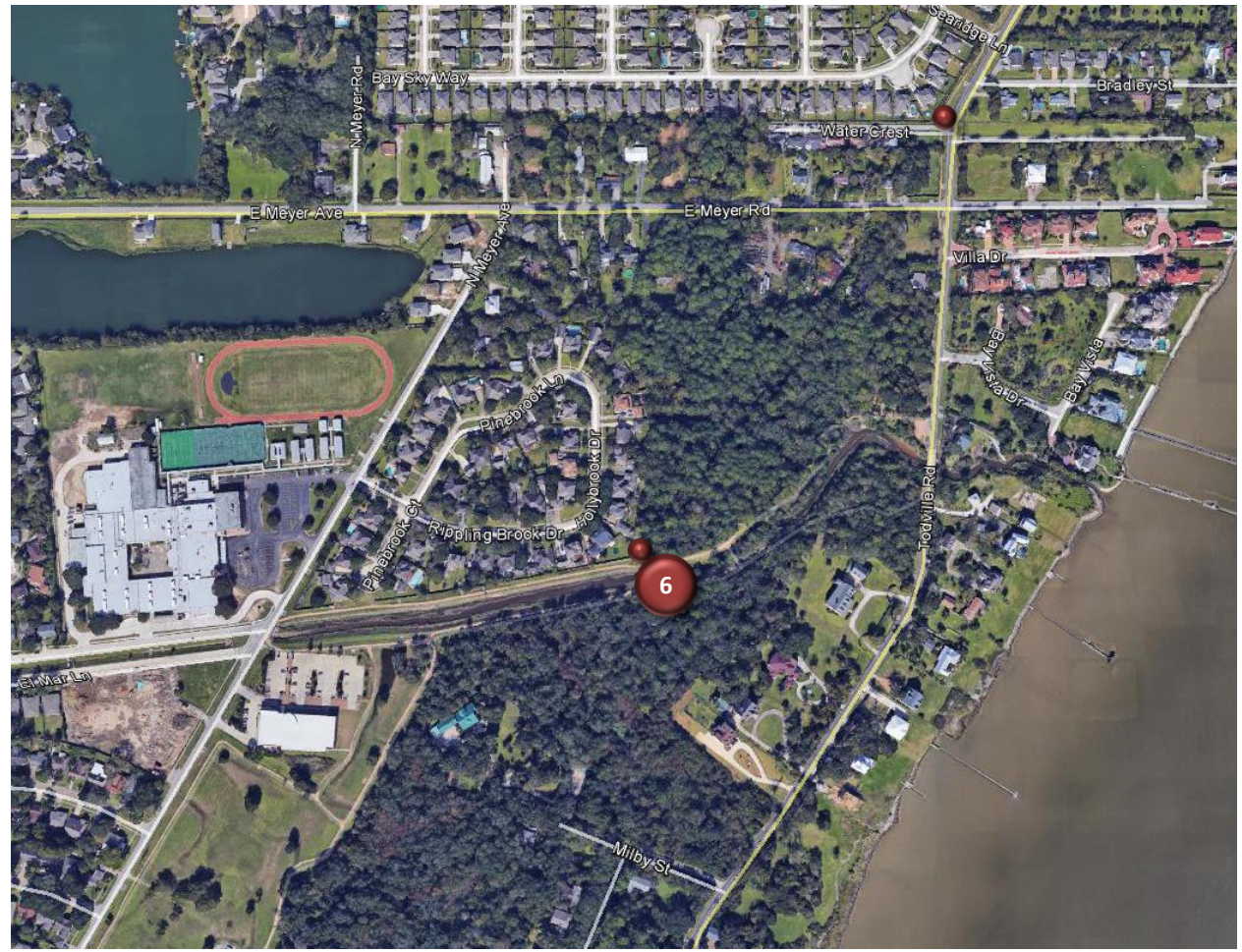
Counter #6

Seabrook Ditch – South Trail

Location Information		
Location Name	Seabrook Ditch – South Trail	
Location Description	Shared-use path connecting Hester Garden Park and Evelyn Meador Library that runs along the south side of the adjacent ditch/waterway	
Jurisdiction	City of Seabrook	
Agency Deployed	City of Seabrook	
GPS Coordinates	29°34'17.47"N, 95° 0'47.33"W	
Surrounding Land Uses	North	Vacant Land, Single-Family Residential
	South	Vacant Land, Single-Family Residential
	East	Vacant Land, Park (Hester Garden Park), Single-Family Residential
	West	Single-Family Residential, Evelyn Meador Library, Seabrook Intermediate School
What object was device secured to?	Pine tree along the south side of the shared-use path	
Sidewalk Width	6'	
Buffer Width	N/A (Off-Road Shared-Use Path)	
Street Width	N/A (Off-Road Shared-Use Path)	
Parallel Parking	N/A (Off-Road Shared-Use Path)	
Landscaping or Trees	Yes	
Sidewalk Pavement Type	Decomposed Granite/Gravel	
ADA Ramps	No	
Sidewalk Condition	Good (Some Puddling)	
Speed Limit	N/A (Off-Road Shared-Use Path)	
Street Lighting	N/A (Off-Road Shared-Use Path)	
Street Traffic Volume	N/A (Off-Road Shared-Use Path)	
Transit	No	
Shade	Yes	
Have counts been collected by H-GAC at this location before?	No	

Trends
<ul style="list-style-type: none"> • Usage tends to be higher during weekends (188 users/day) than on weekdays (144 users/day). • On weekdays, usage is highest in the evening (6:00 p.m. – 7:00 p.m.). There is also an increase in usage during the morning hours (9:00 a.m. – 10:00 a.m.). • During weekends, usage is highest in the morning (9:00 a.m. – 10:00 a.m.).

Location Information: Map



Location Information: Photos

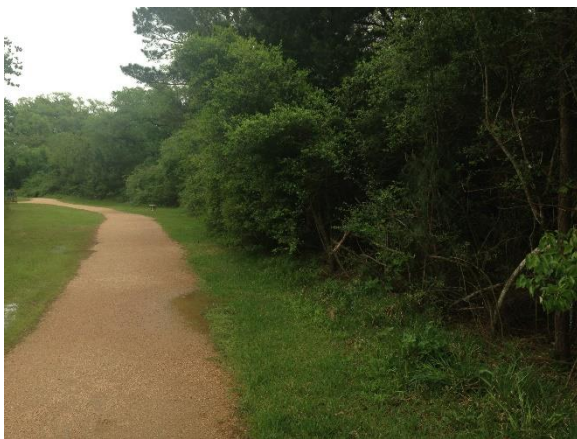


Image 11: Trail South of Seabrook Ditch Facing East

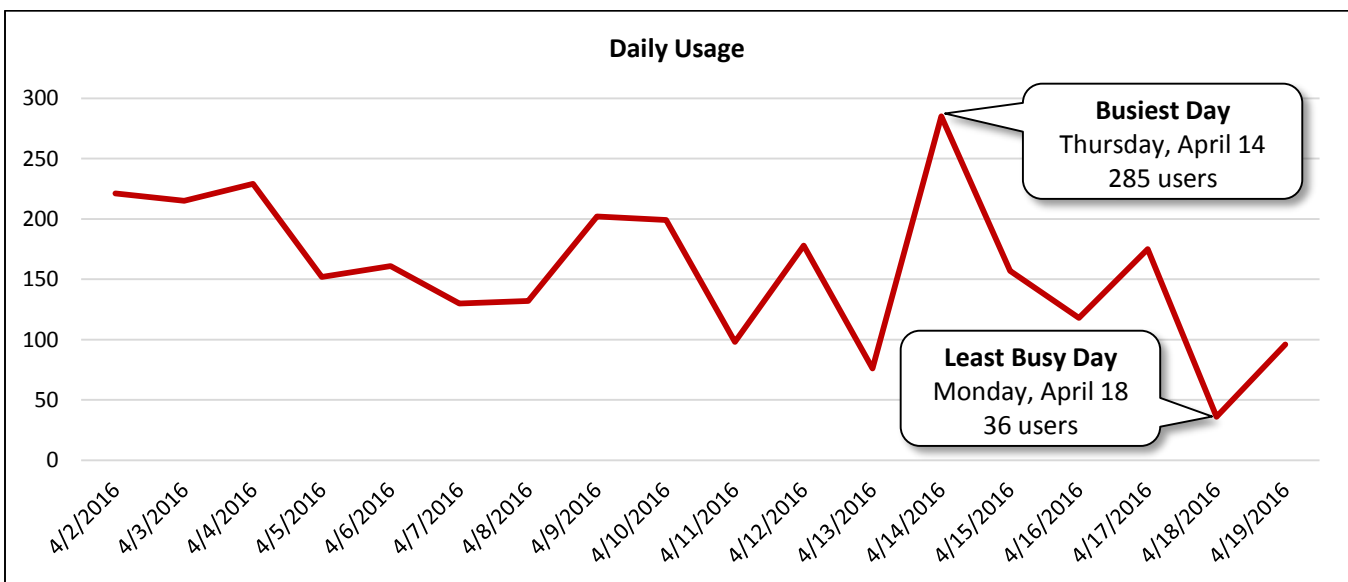


Image 12: Trail South of Seabrook Ditch Facing West

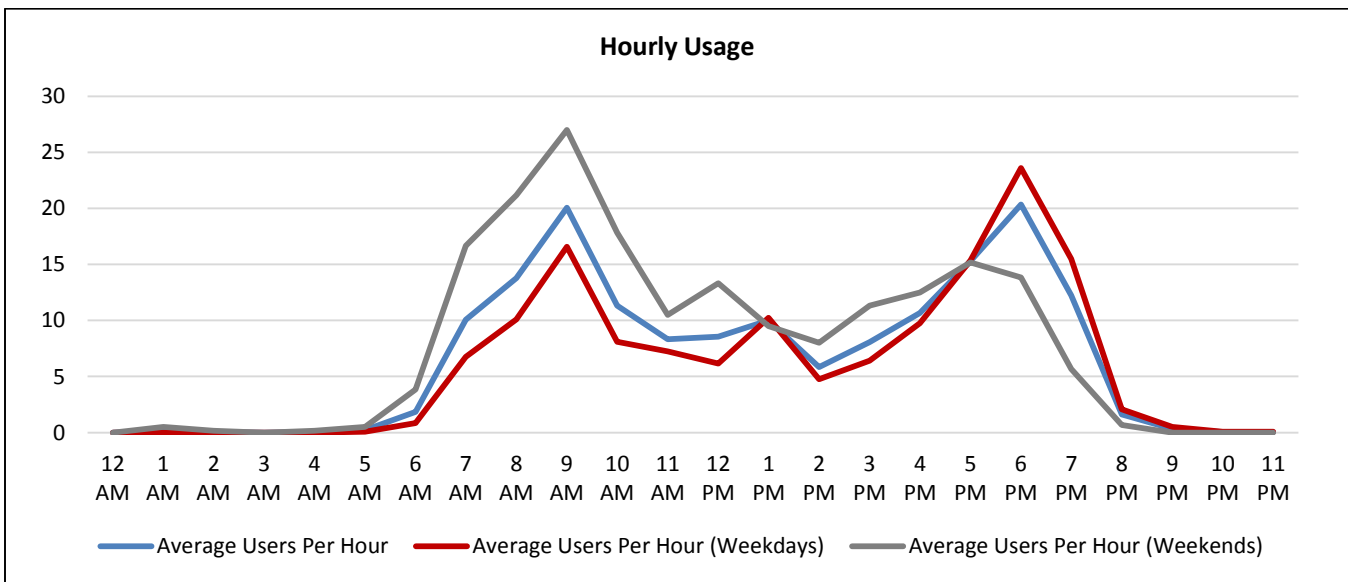
Daily Usage Seabrook Ditch – South Trail				
Date	Users	Select Weather Data*		
		High Temperature (°F)	Low Temperature (°F)	Precipitation (inches)
Saturday, April 2, 2016	221	72	46	0
Sunday, April 3, 2016	215	74	42	0
Monday, April 4, 2016	229	80	48	0
Tuesday, April 5, 2016	152	81	50	0
Wednesday, April 6, 2016	161	79	55	T
Thursday, April 7, 2016	130	85	49	0
Friday, April 8, 2016	132	82	52	0
Saturday, April 9, 2016	202	78	54	T
Sunday, April 10, 2016	199	80	60	0.02
Monday, April 11, 2016	98	79	67	0.01
Tuesday, April 12, 2016	178	76	66	0.01
Wednesday, April 13, 2016	76	72	62	0.63
Thursday, April 14, 2016	285	76	60	0
Friday, April 15, 2016	157	79	58	0
Saturday, April 16, 2016	118	79	59	0.01
Sunday, April 17, 2016	175	76	65	0.71
Monday, April 18, 2016	36	70	64	9.92
Tuesday, April 19, 2016	96	79	65	0.02

Total	2,860
Average Daily Usage	159
Average Daily Usage (Weekday)	144
Average Daily Usage (Weekend)	188

*Weather conditions recorded at Hobby Airport.



Hourly Usage Seabrook Ditch – South Trail			
Time of Day	Average Users Per Hour	Average Users Per Hour (Weekdays)	Average Users Per Hour (Weekends)
12:00 a.m.	0.0	0.0	0.0
1:00 a.m.	0.2	0.0	0.5
2:00 a.m.	0.1	0.0	0.2
3:00 a.m.	0.0	0.0	0.0
4:00 a.m.	0.1	0.0	0.2
5:00 a.m.	0.2	0.1	0.5
6:00 a.m.	1.8	0.8	3.8
7:00 a.m.	10.1	6.8	16.7
8:00 a.m.	13.8	10.1	21.2
9:00 a.m.	20.1	16.6	27.0
10:00 a.m.	11.3	8.1	17.8
11:00 a.m.	8.3	7.3	10.5
12:00 p.m.	8.6	6.2	13.3
1:00 p.m.	10.0	10.3	9.5
2:00 p.m.	5.8	4.8	8.0
3:00 p.m.	8.1	6.4	11.3
4:00 p.m.	10.7	9.8	12.5
5:00 p.m.	15.3	15.3	15.2
6:00 p.m.	20.3	23.6	13.8
7:00 p.m.	12.2	15.5	5.7
8:00 p.m.	1.6	2.1	0.7
9:00 p.m.	0.3	0.5	0.0
10:00 p.m.	0.1	0.1	0.0
11:00 p.m.	0.1	0.1	0.0



Counter #7

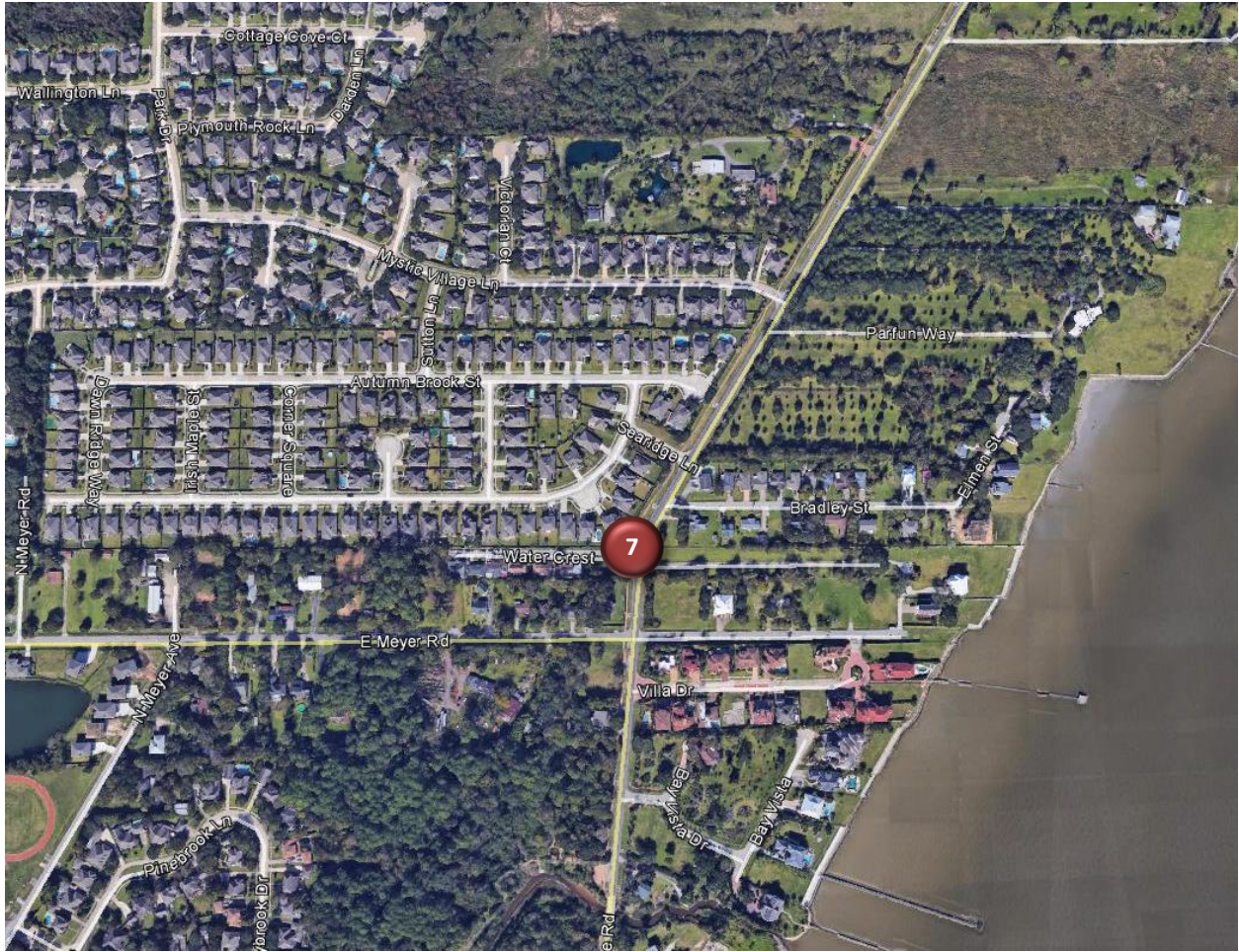
Trail at Mile Marker #11 (Todville Road Trail at Water Crest)

Location Information		
Location Name	Trail at Mile Marker #11 (Todville Road Trail at Water Crest)	
Location Description	Shared-use path along the west side of Todville Road north of Water Crest near Mile Marker #11	
Jurisdiction	City of Seabrook	
Agency Deployed	City of Seabrook	
GPS Coordinates	29°34'32.56"N, 95° 0'37.44"W	
Surrounding Land Uses	North	Single-Family Residential, Vacant Land
	South	Single-Family Residential, Park (Hester Garden Park)
	East	Single Family Residential, Vacant Land
	West	Single-Family Residential
What object was device secured to?	Utility Pole north of Water Crest	
Sidewalk Width	5'	
Buffer Width	25'	
Street Width	Two-Lane Undivided Roadway	
Parallel Parking	No	
Landscaping or Trees	Yes	
Sidewalk Pavement Type	Decomposed Granite/Gravel	
ADA Ramps	No	
Sidewalk Condition	Good	
Speed Limit	35 miles per hour	
Street Lighting	Yes	
Street Traffic Volume	N/A	
Transit	No	
Shade	No	
Have counts been collected by H-GAC at this location before?	No	

Trends

- Usage tends to be much higher during weekends (211 users/day) than on weekdays (86 users/day).
- On weekdays, usage is highest in the evening (4:00 p.m. – 7:00 p.m.).
- During weekends, usage is highest in the morning (7:00 a.m. – 10:00 a.m.).

Location Information: Map



Location Information: Photos



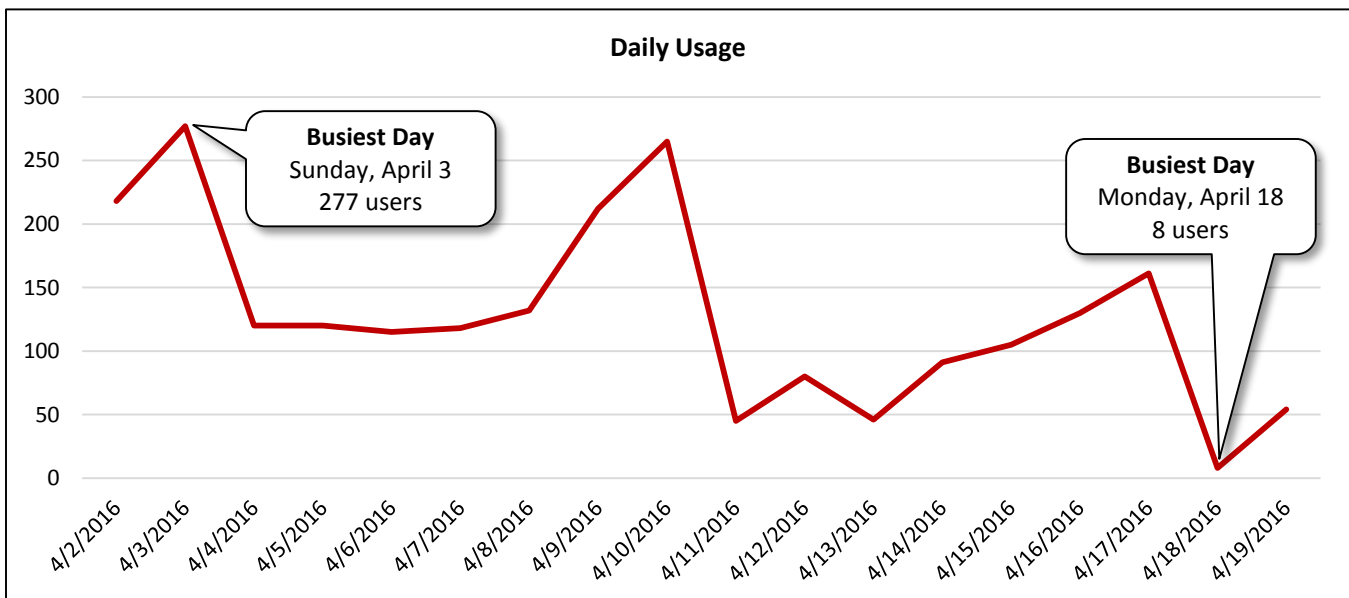
Image 23: Todville Road Trail at Water Crest Facing North



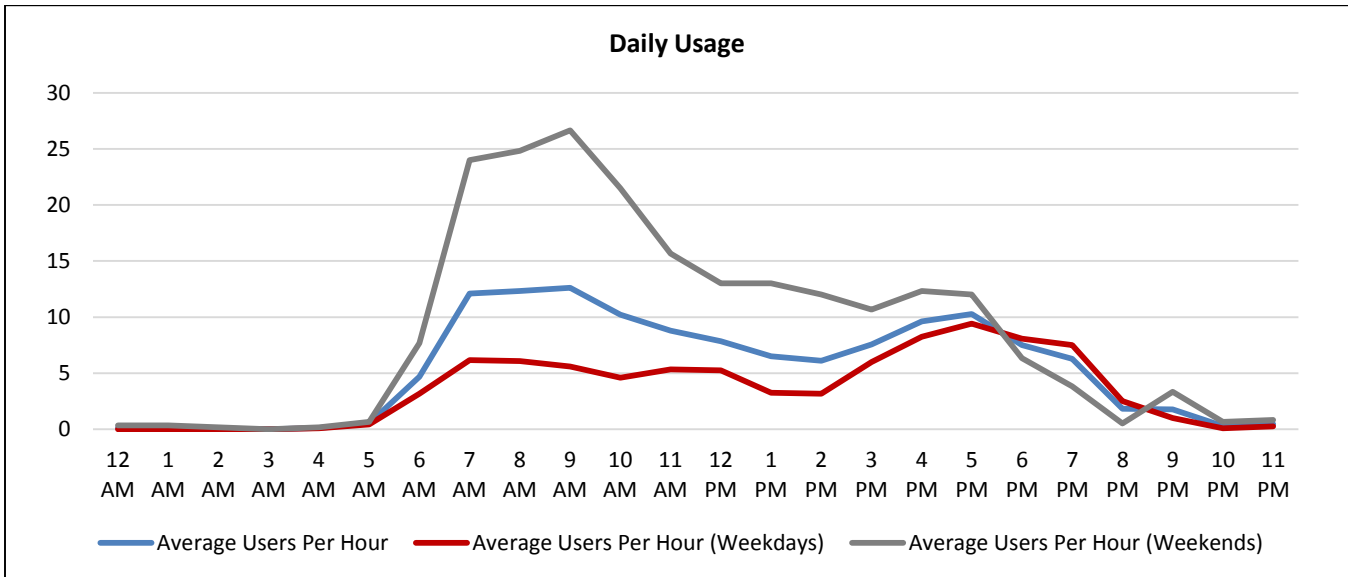
Image 24: Todville Road Trail at Water Crest Facing South

Daily Usage				
Trail at Mile Marker #11 (Todville Road Trail at Water Crest)				
Date	Users	Select Weather Data*		
		High Temperature (°F)	Low Temperature (°F)	Precipitation (inches)
Saturday, April 2, 2016	218	72	46	0
Sunday, April 3, 2016	277	74	42	0
Monday, April 4, 2016	120	80	48	0
Tuesday, April 5, 2016	120	81	50	0
Wednesday, April 6, 2016	115	79	55	T
Thursday, April 7, 2016	118	85	49	0
Friday, April 8, 2016	132	82	52	0
Saturday, April 9, 2016	212	78	54	T
Sunday, April 10, 2016	265	80	60	0.02
Monday, April 11, 2016	45	79	67	0.01
Tuesday, April 12, 2016	80	76	66	0.01
Wednesday, April 13, 2016	46	72	62	0.63
Thursday, April 14, 2016	91	76	60	0
Friday, April 15, 2016	105	79	58	0
Saturday, April 16, 2016	130	79	59	0.01
Sunday, April 17, 2016	161	76	65	0.71
Monday, April 18, 2016	8	70	64	9.92
Tuesday, April 19, 2016	54	79	65	0.02
Total	2,297			
Average Daily Usage	128			
Average Daily Usage (Weekday)	86			
Average Daily Usage (Weekend)	211			

*Weather conditions recorded at Hobby Airport.



Hourly Usage			
Trail at Mile Marker #11 (Todville Road Trail at Water Crest)			
Time of Day	Average Users Per Hour	Average Users Per Hour (Weekdays)	Average Users Per Hour (Weekends)
12:00 a.m.	0.1	0.0	0.3
1:00 a.m.	0.1	0.0	0.3
2:00 a.m.	0.1	0.0	0.2
3:00 a.m.	0.0	0.0	0.0
4:00 a.m.	0.1	0.1	0.2
5:00 a.m.	0.5	0.4	0.7
6:00 a.m.	4.7	3.2	7.7
7:00 a.m.	12.1	6.2	24.0
8:00 a.m.	12.3	6.1	24.8
9:00 a.m.	12.6	5.6	26.7
10:00 a.m.	10.2	4.6	21.5
11:00 a.m.	8.8	5.3	15.7
12:00 p.m.	7.8	5.3	13.0
1:00 p.m.	6.5	3.3	13.0
2:00 p.m.	6.1	3.2	12.0
3:00 p.m.	7.6	6.0	10.7
4:00 p.m.	9.6	8.3	12.3
5:00 p.m.	10.3	9.4	12.0
6:00 p.m.	7.5	8.1	6.3
7:00 p.m.	6.3	7.5	3.8
8:00 p.m.	1.8	2.5	0.5
9:00 p.m.	1.8	1.0	3.3
10:00 p.m.	0.3	0.1	0.7
11:00 p.m.	0.4	0.3	0.8



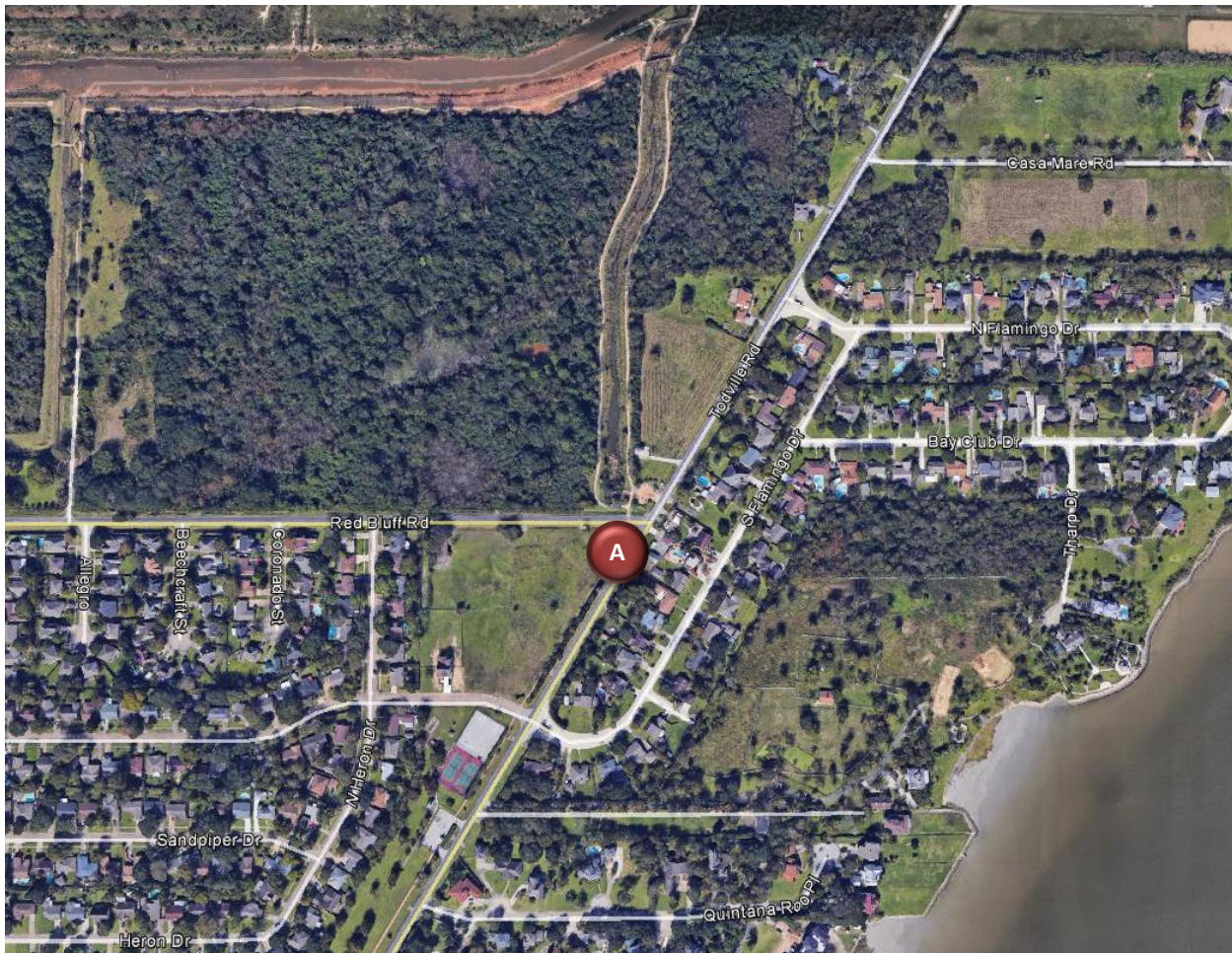
Counter A

Trail at Mile Marker #14 (Todville Road Trail at Red Bluff Road)

Location Information		
Location Name	Trail at Mile Marker #14 (Todville Road Trail at Red Bluff Road)	
Location Description	Shared-use path along the west side of Todville Road south of Red Bluff Road	
Jurisdiction	City of Seabrook	
Agency Deployed	City of Seabrook	
GPS Coordinates	29°35'1.85"N, 95° 0'18.22"W	
Surrounding Land Uses	North	Park (Seabrook Wildlife Refuge Park)
	South	Vacant Land, Park (Baybrook Park), Single-Family Residential
	East	Single-Family Residential
	West	Vacant Land, Single-Family Residential
What object was device secured to?	Tree south of Red Bluff Road	
Sidewalk Width	6'	
Buffer Width	25'	
Street Width	Two-Lane Undivided Roadway	
Parallel Parking	No	
Landscaping or Trees	Yes	
Sidewalk Pavement Type	Decomposed Granite/Gravel	
ADA Ramps	No	
Sidewalk Condition	Good (Some Puddling)	
Speed Limit	35 miles per hour	
Street Lighting	No	
Street Traffic Volume	N/A	
Transit	No	
Shade	No	
Have counts been collected by H-GAC at this location before?	No	

Trends
<ul style="list-style-type: none"> • Usage tends to be much higher during weekends (185 users/day) than on weekdays (84 users/day). • On weekdays, usage is highest in the morning (7:00 a.m. – 9:00 a.m.). • During weekends, usage is highest in the evening (6:00 p.m. – 7:00 p.m.).

Location Information: Map



Location Information: Photos



Image 13: Todville Road Trail at Red Bluff Road Facing North

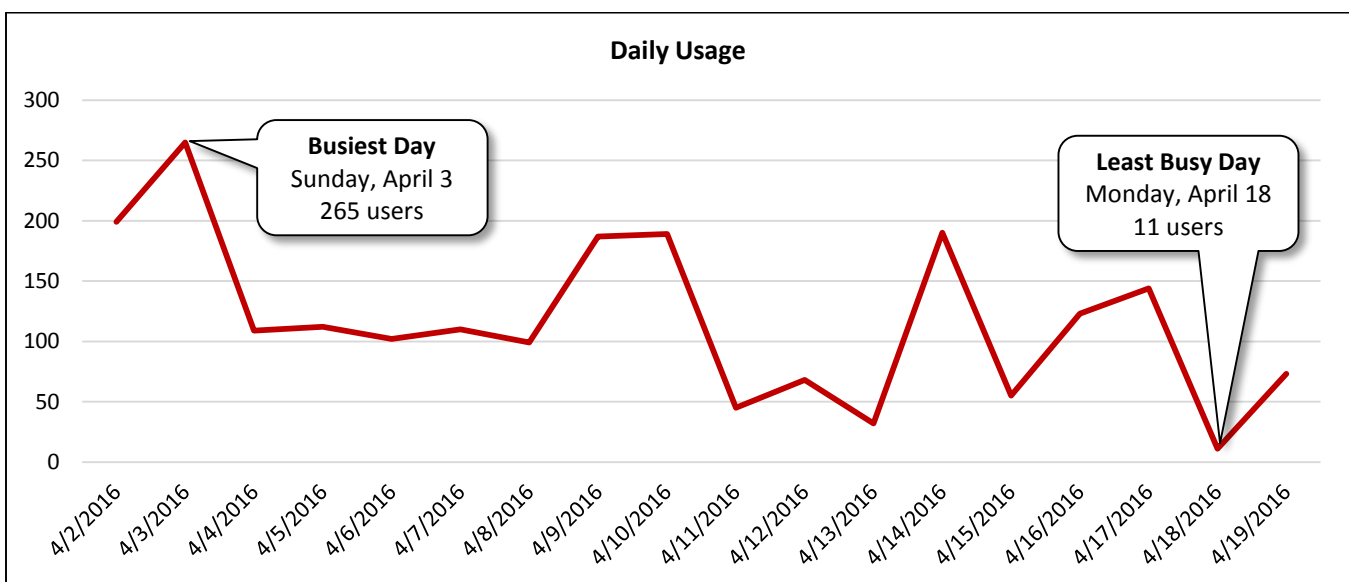


Image 14: Todville Road Trail at Red Bluff Road Facing South

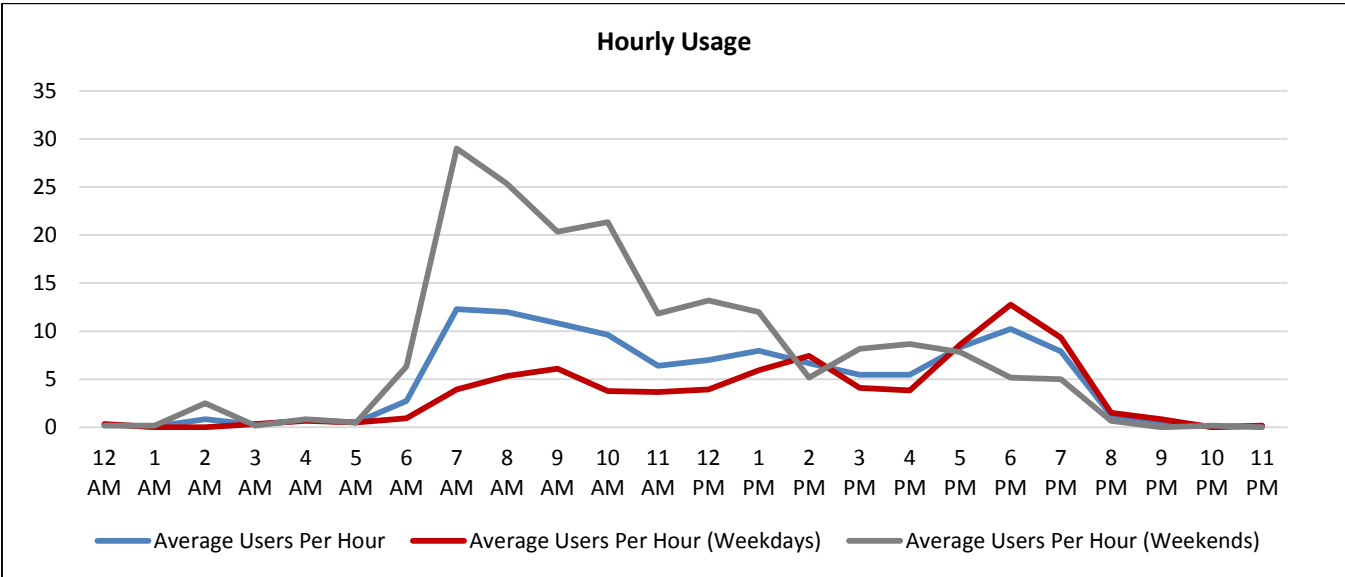
Daily Usage				
Trail at Mile Marker #14 (Todville Road Trail at Red Bluff Road)				
Date	Users	Select Weather Data*		
		High Temperature (°F)	Low Temperature (°F)	Precipitation (inches)
Saturday, April 2, 2016	199	72	46	0
Sunday, April 3, 2016	265	74	42	0
Monday, April 4, 2016	109	80	48	0
Tuesday, April 5, 2016	112	81	50	0
Wednesday, April 6, 2016	102	79	55	T
Thursday, April 7, 2016	110	85	49	0
Friday, April 8, 2016	99	82	52	0
Saturday, April 9, 2016	187	78	54	T
Sunday, April 10, 2016	189	80	60	0.02
Monday, April 11, 2016	45	79	67	0.01
Tuesday, April 12, 2016	68	76	66	0.01
Wednesday, April 13, 2016	32	72	62	0.63
Thursday, April 14, 2016	190	76	60	0
Friday, April 15, 2016	55	79	58	0
Saturday, April 16, 2016	123	79	59	0.01
Sunday, April 17, 2016	144	76	65	0.71
Monday, April 18, 2016	11	70	64	9.92
Tuesday, April 19, 2016	73	79	65	0.02

Total	2,113
Average Daily Usage	117
Average Daily Usage (Weekday)	84
Average Daily Usage (Weekend)	185

*Weather conditions recorded at Hobby Airport.



Hourly Usage			
Trail at Mile Marker #14 (Todville Road Trail at Red Bluff Road)			
Time of Day	Average Users Per Hour	Average Users Per Hour (Weekdays)	Average Users Per Hour (Weekends)
12:00 a.m.	0.3	0.3	0.2
1:00 a.m.	0.1	0.0	0.2
2:00 a.m.	0.8	0.0	2.5
3:00 a.m.	0.3	0.3	0.2
4:00 a.m.	0.7	0.7	0.8
5:00 a.m.	0.5	0.5	0.5
6:00 a.m.	2.7	0.9	6.3
7:00 a.m.	12.3	3.9	29.0
8:00 a.m.	12.0	5.3	25.3
9:00 a.m.	10.8	6.1	20.3
10:00 a.m.	9.6	3.8	21.3
11:00 a.m.	6.4	3.7	11.8
12:00 p.m.	7.0	3.9	13.2
1:00 p.m.	7.9	5.9	12.0
2:00 p.m.	6.7	7.4	5.2
3:00 p.m.	5.4	4.1	8.2
4:00 p.m.	5.4	3.8	8.7
5:00 p.m.	8.3	8.6	7.8
6:00 p.m.	10.2	12.8	5.2
7:00 p.m.	7.9	9.3	5.0
8:00 p.m.	1.2	1.5	0.7
9:00 p.m.	0.6	0.8	0.0
10:00 p.m.	0.1	0.0	0.2
11:00 p.m.	0.1	0.2	0.0



Counter B

Trail at Mile Marker #18 (Pine Gully Park)

Location Information		
Location Name	Trail at Mile Marker #18 (Pine Gully Park)	
Location Description	Shared-use path south of Pine Gully Road near Mile Marker #18	
Jurisdiction	City of Seabrook	
Agency Deployed	City of Seabrook	
GPS Coordinates	29°35'31.58"N, 94°59'52.21"W	
Surrounding Land Uses	North	Commercial/Retail (Nursery), Vacant Land
	South	Wetlands, Single-Family Residential
	East	Park (Pine Gully Park)
	West	Vacant Land
What object was device secured to?	Tree west of Mile Marker #18	
Sidewalk Width	7'	
Buffer Width	N/A (Off-Road Shared-Use Path)	
Street Width	N/A (Off-Road Shared-Use Path)	
Parallel Parking	N/A (Off-Road Shared-Use Path)	
Landscaping or Trees	Yes	
Sidewalk Pavement Type	Decomposed Granite/Gravel	
ADA Ramps	No	
Sidewalk Condition	Good (Some Puddling)	
Speed Limit	N/A (Off-Road Shared-Use Path)	
Street Lighting	No	
Street Traffic Volume	N/A (Off-Road Shared-Use Path)	
Transit	No	
Shade	Yes	
Have counts been collected by H-GAC at this location before?	No	

Trends
<ul style="list-style-type: none"> • Usage tends to be much higher during weekends (386 users/day) than on weekdays (127 users/day). • On weekdays, usage is highest in the evening (6:00 p.m. – 7:00 p.m.). • During weekends, usage remains relatively steady throughout the day (7:00 a.m. – 6:00 p.m.). It is highest in the late morning (10:00 a.m. – 11:00 a.m.).

Location Information: Map



Location Information: Photos



Image 15: Trail near Pine Gully Park Facing East

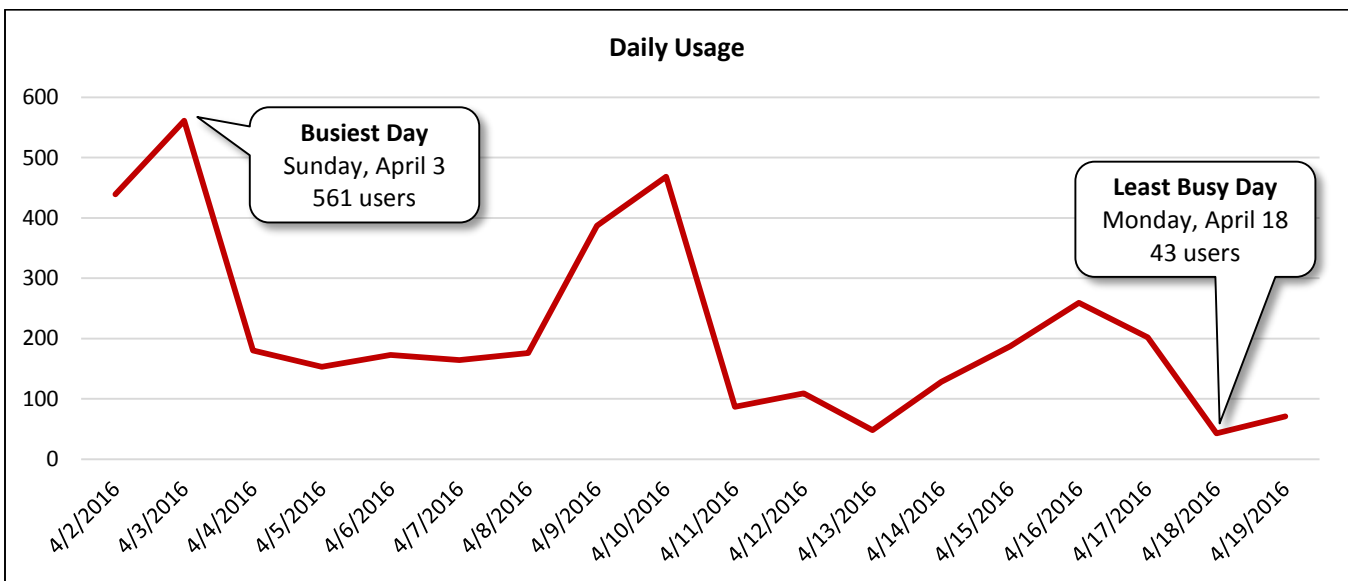


Image 16: Trail near Pine Gully Park Facing West

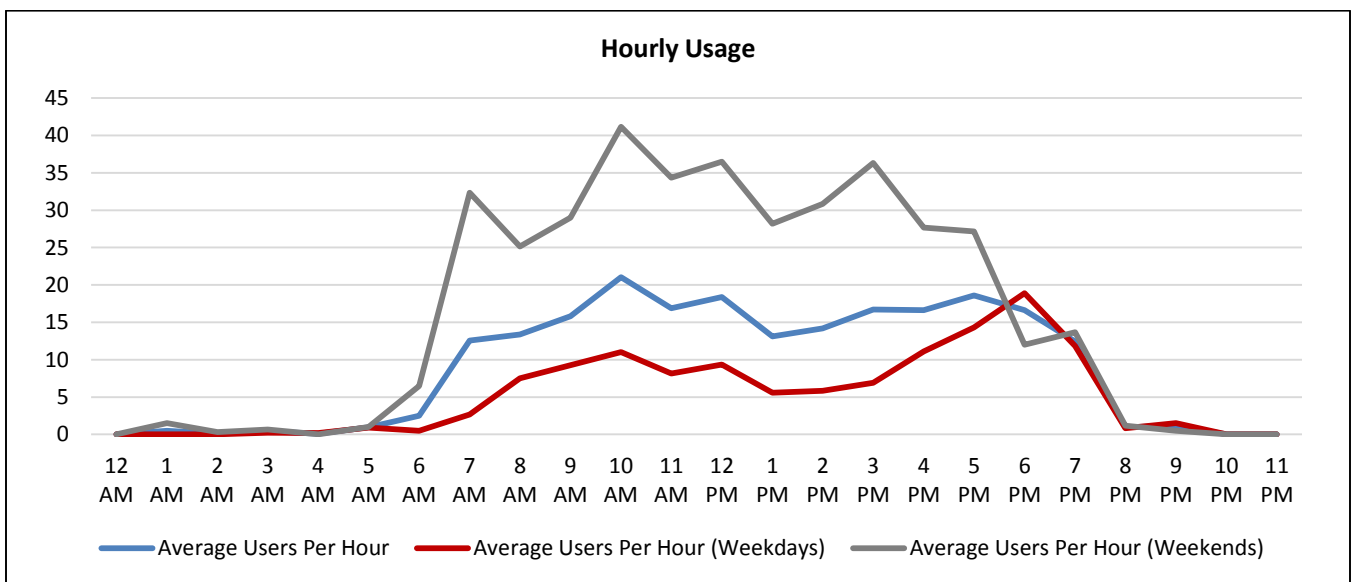
Daily Usage				
Trail at Mile Marker #18 (Pine Gully Park)				
Date	Users	Select Weather Data*		
		High Temperature (°F)	Low Temperature (°F)	Precipitation (inches)
Saturday, April 2, 2016	439	72	46	0
Sunday, April 3, 2016	561	74	42	0
Monday, April 4, 2016	180	80	48	0
Tuesday, April 5, 2016	153	81	50	0
Wednesday, April 6, 2016	173	79	55	T
Thursday, April 7, 2016	164	85	49	0
Friday, April 8, 2016	176	82	52	0
Saturday, April 9, 2016	387	78	54	T
Sunday, April 10, 2016	468	80	60	0.02
Monday, April 11, 2016	87	79	67	0.01
Tuesday, April 12, 2016	109	76	66	0.01
Wednesday, April 13, 2016	48	72	62	0.63
Thursday, April 14, 2016	128	76	60	0
Friday, April 15, 2016	187	79	58	0
Saturday, April 16, 2016	259	79	59	0.01
Sunday, April 17, 2016	202	76	65	0.71
Monday, April 18, 2016	43	70	64	9.92
Tuesday, April 19, 2016	71	79	65	0.02

Total	3,835
Average Daily Usage	213
Average Daily Usage (Weekday)	127
Average Daily Usage (Weekend)	386

*Weather conditions recorded at Hobby Airport.



Hourly Usage			
Trail at Mile Marker #18 (Pine Gully Park)			
Time of Day	Average Users Per Hour	Average Users Per Hour (Weekdays)	Average Users Per Hour (Weekends)
12:00 a.m.	0.0	0.0	0.0
1:00 a.m.	0.5	0.0	1.5
2:00 a.m.	0.1	0.0	0.3
3:00 a.m.	0.4	0.3	0.7
4:00 a.m.	0.1	0.2	0.0
5:00 a.m.	0.9	0.9	1.0
6:00 a.m.	2.5	0.5	6.5
7:00 a.m.	12.6	2.7	32.3
8:00 a.m.	13.4	7.5	25.2
9:00 a.m.	15.8	9.3	29.0
10:00 a.m.	21.1	11.0	41.2
11:00 a.m.	16.9	8.2	34.3
12:00 p.m.	18.4	9.3	36.5
1:00 p.m.	13.1	5.6	28.2
2:00 p.m.	14.2	5.8	30.8
3:00 p.m.	16.7	6.9	36.3
4:00 p.m.	16.6	11.1	27.7
5:00 p.m.	18.6	14.3	27.2
6:00 p.m.	16.6	18.9	12.0
7:00 p.m.	12.4	11.8	13.7
8:00 p.m.	0.9	0.8	1.2
9:00 p.m.	1.2	1.5	0.5
10:00 p.m.	0.0	0.0	0.0
11:00 p.m.	0.0	0.0	0.0



Counter C

Trail at Mile Marker #21

Location Information		
Location Name	Trail at Mile Marker #21	
Location Description	Shared-use path along the south bank of Pine Gully at Mile Marker #21	
Jurisdiction	City of Seabrook	
Agency Deployed	City of Seabrook	
GPS Coordinates	29°35'15.78"N, 95° 0'27.19"W	
Surrounding Land Uses	North	Vacant Land
	South	Park (Seabrook Wildlife Refuge Park)
	East	Park (Seabrook Wildlife Refuge Park)
	West	Park (Seabrook Wildlife Refuge Park)
What object was device secured to?	Mile Marker #21	
Sidewalk Width	7'	
Buffer Width	N/A (Off-Road Shared-Use Path)	
Street Width	N/A (Off-Road Shared-Use Path)	
Parallel Parking	N/A (Off-Road Shared-Use Path)	
Landscaping or Trees	Yes	
Sidewalk Pavement Type	Decomposed Granite/Gravel	
ADA Ramps	No	
Sidewalk Condition	Good	
Speed Limit	N/A (Off-Road Shared-Use Path)	
Street Lighting	N/A (Off-Road Shared-Use Path)	
Street Traffic Volume	N/A (Off-Road Shared-Use Path)	
Transit	No	
Shade	No	
Have counts been collected by H-GAC at this location before?	No	

Trends
<ul style="list-style-type: none"> • Usage tends to be much higher during weekends (192 users/day) than on weekdays (85 users/day). • On weekdays, usage is highest in the evening (5:00 p.m. – 7:00 p.m.). • During weekends, usage remains relatively steady throughout the day (7:00 a.m. – 6:00 p.m.). It is highest in the mid-afternoon (2:00 p.m. – 3:00 p.m.).

Location Information: Map



Location Information: Photos



Image 17: Trail at Mile Marker #21 Facing East

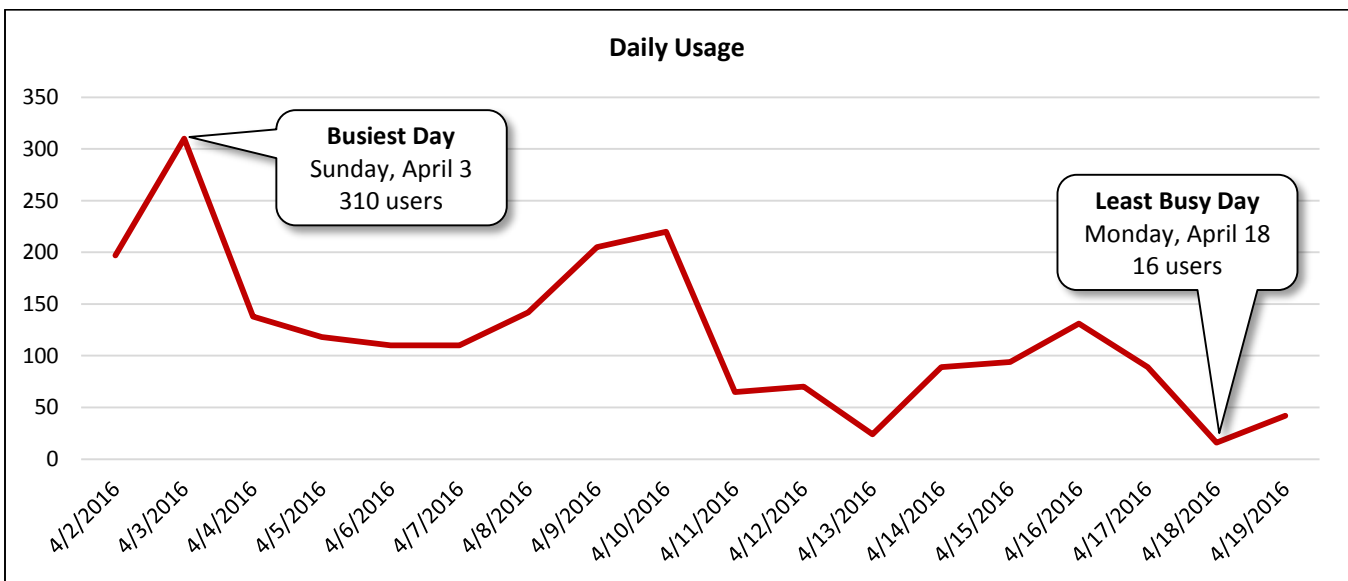


Image 18: Trail at Mile Marker #21 Facing West

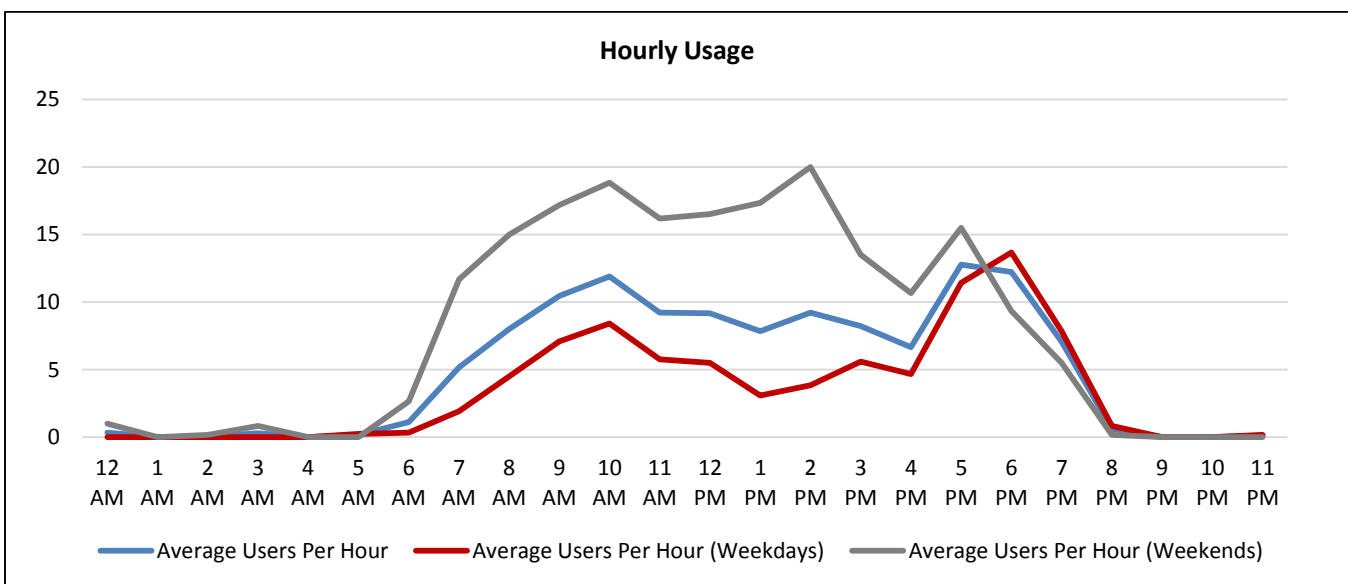
Daily Usage Trail at Mile Marker #21				
Date	Users	Select Weather Data*		
		High Temperature (°F)	Low Temperature (°F)	Precipitation (inches)
Saturday, April 2, 2016	197	72	46	0
Sunday, April 3, 2016	310	74	42	0
Monday, April 4, 2016	138	80	48	0
Tuesday, April 5, 2016	118	81	50	0
Wednesday, April 6, 2016	110	79	55	T
Thursday, April 7, 2016	110	85	49	0
Friday, April 8, 2016	142	82	52	0
Saturday, April 9, 2016	205	78	54	T
Sunday, April 10, 2016	220	80	60	0.02
Monday, April 11, 2016	65	79	67	0.01
Tuesday, April 12, 2016	70	76	66	0.01
Wednesday, April 13, 2016	24	72	62	0.63
Thursday, April 14, 2016	89	76	60	0
Friday, April 15, 2016	94	79	58	0
Saturday, April 16, 2016	131	79	59	0.01
Sunday, April 17, 2016	89	76	65	0.71
Monday, April 18, 2016	16	70	64	9.92
Tuesday, April 19, 2016	42	79	65	0.02

Total	2,170
Average Daily Usage	121
Average Daily Usage (Weekday)	85
Average Daily Usage (Weekend)	192

*Weather conditions recorded at Hobby Airport.



Hourly Usage Trail at Mile Marker #21			
Time of Day	Average Users Per Hour	Average Users Per Hour (Weekdays)	Average Users Per Hour (Weekends)
12:00 a.m.	0.3	0.0	1.0
1:00 a.m.	0.0	0.0	0.0
2:00 a.m.	0.1	0.0	0.2
3:00 a.m.	0.3	0.0	0.8
4:00 a.m.	0.0	0.0	0.0
5:00 a.m.	0.2	0.3	0.0
6:00 a.m.	1.1	0.3	2.7
7:00 a.m.	5.2	1.9	11.7
8:00 a.m.	8.0	4.5	15.0
9:00 a.m.	10.4	7.1	17.2
10:00 a.m.	11.9	8.4	18.8
11:00 a.m.	9.2	5.8	16.2
12:00 p.m.	9.2	5.5	16.5
1:00 p.m.	7.8	3.1	17.3
2:00 p.m.	9.2	3.8	20.0
3:00 p.m.	8.2	5.6	13.5
4:00 p.m.	6.7	4.7	10.7
5:00 p.m.	12.8	11.4	15.5
6:00 p.m.	12.2	13.7	9.3
7:00 p.m.	7.1	7.8	5.5
8:00 p.m.	0.6	0.8	0.2
9:00 p.m.	0.0	0.0	0.0
10:00 p.m.	0.0	0.0	0.0
11:00 p.m.	0.1	0.2	0.0



Counter D

Trail at Mile Marker #24

Location Information		
Location Name	Trail at Mile Marker #24	
Location Description	Shared-use path in Seabrook Wildlife Refuge Park at Mile Marker #24	
Jurisdiction	City of Seabrook	
Agency Deployed	City of Seabrook	
GPS Coordinates	29°35'7.45"N, 95° 0'45.18"W	
Surrounding Land Uses	North	Park (Seabrook Wildlife Refuge Park)
	South	Park (Seabrook Wildlife Refuge Park), Single-Family Residential
	East	Park (Seabrook Wildlife Refuge Park)
	West	Park (Seabrook Wildlife Refuge Park), Vacant Land
What object was device secured to?	Mile Marker #24	
Sidewalk Width	6'	
Buffer Width	N/A (Off-Road Shared-Use Path)	
Street Width	N/A (Off-Road Shared-Use Path)	
Parallel Parking	N/A (Off-Road Shared-Use Path)	
Landscaping or Trees	Yes	
Sidewalk Pavement Type	Decomposed Granite/Gravel	
ADA Ramps	No	
Sidewalk Condition	Good	
Speed Limit	N/A (Off-Road Shared-Use Path)	
Street Lighting	No	
Street Traffic Volume	N/A (Off-Road Shared-Use Path)	
Transit	No	
Shade	Yes	
Have counts been collected by H-GAC at this location before?	No	

Trends
<ul style="list-style-type: none"> • Usage tends to be much higher during weekends (106 users/day) than on weekdays (45 users/day). • On weekdays, usage is highest in the evening (6:00 p.m. – 7:00 p.m.). • During weekends, remains relatively steady throughout the day (8:00 a.m. – 7:00 p.m.). It is highest in the morning (9:00 a.m. – 10:00 a.m.).

Location Information: Map



Location Information: Photos



Image 19: Trail at Mile Marker #24 Facing North

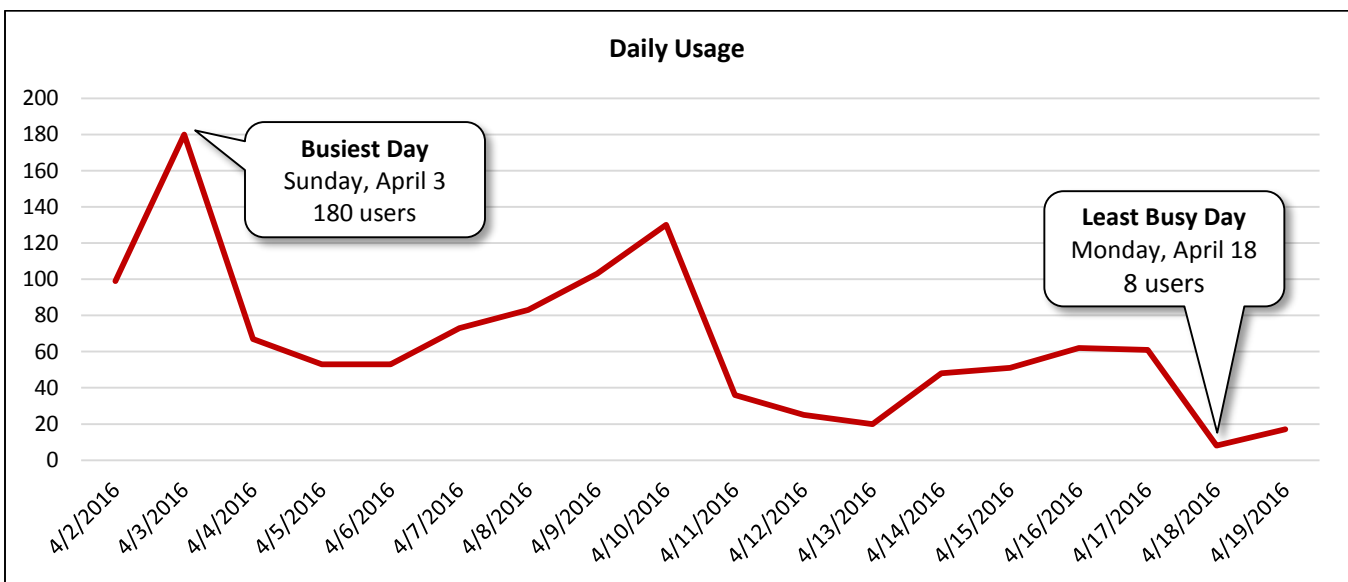


Image 20: Trail at Mile Marker #24 Facing South and West

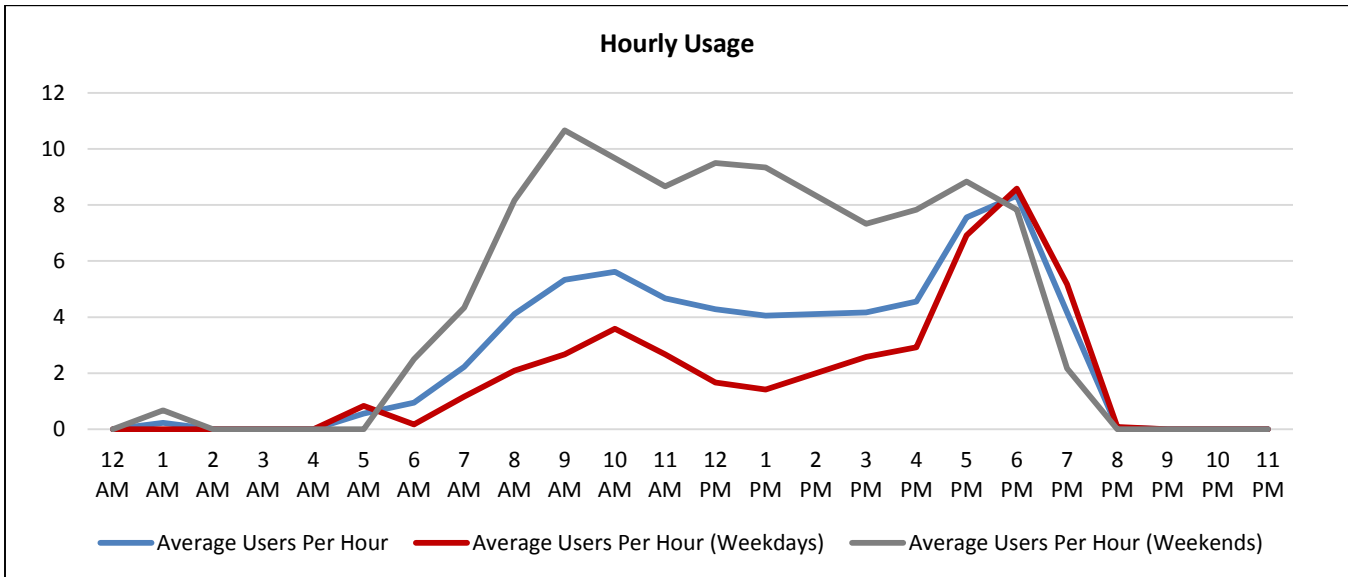
Daily Usage Trail at Mile Marker #24				
Date	Users	Select Weather Data*		
		High Temperature (°F)	Low Temperature (°F)	Precipitation (inches)
Saturday, April 2, 2016	99	72	46	0
Sunday, April 3, 2016	180	74	42	0
Monday, April 4, 2016	67	80	48	0
Tuesday, April 5, 2016	53	81	50	0
Wednesday, April 6, 2016	53	79	55	T
Thursday, April 7, 2016	73	85	49	0
Friday, April 8, 2016	83	82	52	0
Saturday, April 9, 2016	103	78	54	T
Sunday, April 10, 2016	130	80	60	0.02
Monday, April 11, 2016	36	79	67	0.01
Tuesday, April 12, 2016	25	76	66	0.01
Wednesday, April 13, 2016	20	72	62	0.63
Thursday, April 14, 2016	48	76	60	0
Friday, April 15, 2016	51	79	58	0
Saturday, April 16, 2016	62	79	59	0.01
Sunday, April 17, 2016	61	76	65	0.71
Monday, April 18, 2016	8	70	64	9.92
Tuesday, April 19, 2016	17	79	65	0.02

Total	1,169
Average Daily Usage	65
Average Daily Usage (Weekday)	45
Average Daily Usage (Weekend)	106

*Weather conditions recorded at Hobby Airport.



Hourly Usage Trail at Mile Marker #24			
Time of Day	Average Users Per Hour	Average Users Per Hour (Weekdays)	Average Users Per Hour (Weekends)
12:00 a.m.	0.0	0.0	0.0
1:00 a.m.	0.2	0.0	0.7
2:00 a.m.	0.0	0.0	0.0
3:00 a.m.	0.0	0.0	0.0
4:00 a.m.	0.0	0.0	0.0
5:00 a.m.	0.6	0.8	0.0
6:00 a.m.	0.9	0.2	2.5
7:00 a.m.	2.2	1.2	4.3
8:00 a.m.	4.1	2.1	8.2
9:00 a.m.	5.3	2.7	10.7
10:00 a.m.	5.6	3.6	9.7
11:00 a.m.	4.7	2.7	8.7
12:00 p.m.	4.3	1.7	9.5
1:00 p.m.	4.1	1.4	9.3
2:00 p.m.	4.1	2.0	8.3
3:00 p.m.	4.2	2.6	7.3
4:00 p.m.	4.6	2.9	7.8
5:00 p.m.	7.6	6.9	8.8
6:00 p.m.	8.3	8.6	7.8
7:00 p.m.	4.2	5.2	2.2
8:00 p.m.	0.1	0.1	0.0
9:00 p.m.	0.0	0.0	0.0
10:00 p.m.	0.0	0.0	0.0
11:00 p.m.	0.0	0.0	0.0



Counter E

Trail at Mile Marker #25

Location Information		
Location Name	Trail at Mile Marker #25	
Location Description	Shared-use path near Mile Marker #25 at the northeast corner of Red Bluff Road/Park Drive intersection	
Jurisdiction	City of Seabrook	
Agency Deployed	City of Seabrook	
GPS Coordinates	29°35'3.41"N, 95° 0'54.68"W	
Surrounding Land Uses	North	Vacant Land
	South	Park (Friendship Park), Single-Family Residential
	East	Park (Seabrook Wildlife Refuge Park), Single-Family Residential
	West	Vacant Land
What object was device secured to?	Sign Post (City of Seabrook: Park Rules)	
Sidewalk Width	6'	
Buffer Width	N/A (Off-Road Shared-Use Path)	
Street Width	N/A (Off-Road Shared-Use Path)	
Parallel Parking	N/A (Off-Road Shared-Use Path)	
Landscaping or Trees	Yes	
Sidewalk Pavement Type	Decomposed Granite/Gravel	
ADA Ramps	No	
Sidewalk Condition	Good	
Speed Limit	N/A (Off-Road Shared-Use Path)	
Street Lighting	No	
Street Traffic Volume	N/A (Off-Road Shared-Use Path)	
Transit	No	
Shade	Yes	
Have counts been collected by H-GAC at this location before?	No	

Trends
<ul style="list-style-type: none"> • Usage tends to be much higher during weekends (150 users/day) than on weekdays (55 users/day). • On weekdays, usage is highest in the evening (5:00 p.m. – 7:00 p.m.). • During weekends, usage remains relatively steady in the morning through the mid-afternoon (8:00 a.m. – 3:00 p.m.). It is highest in the late morning (11:00 a.m. – 12:00 p.m.).

Location Information: Map



Location Information: Photos



Image 21: Trail at Mile Marker #25 Facing East

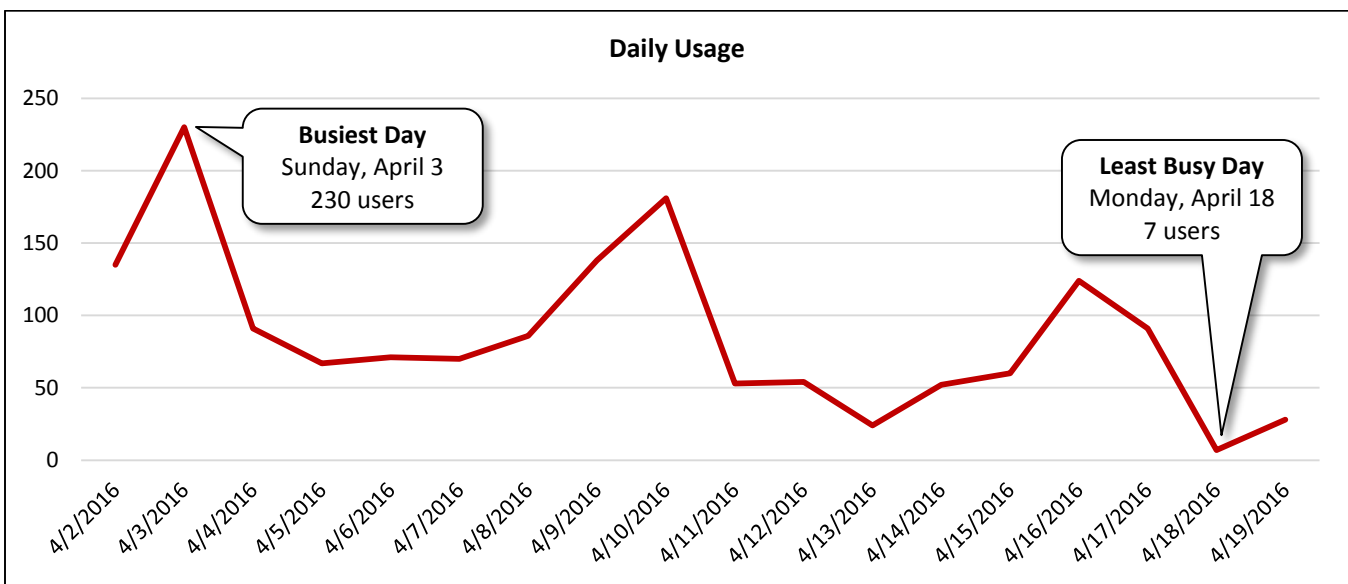


Image 22: Trail at Mile Marker #25 Facing West

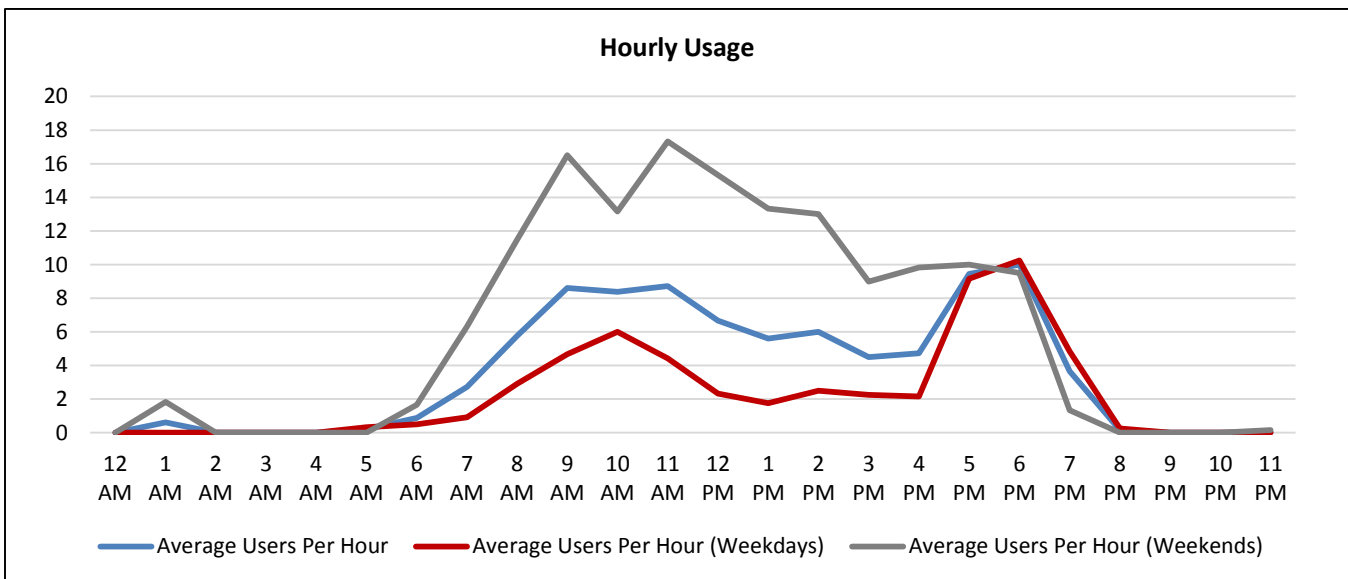
Daily Usage Trail at Mile Marker #25				
Date	Users	Select Weather Data*		
		High Temperature (°F)	Low Temperature (°F)	Precipitation (inches)
Saturday, April 2, 2016	135	72	46	0
Sunday, April 3, 2016	230	74	42	0
Monday, April 4, 2016	91	80	48	0
Tuesday, April 5, 2016	67	81	50	0
Wednesday, April 6, 2016	71	79	55	T
Thursday, April 7, 2016	70	85	49	0
Friday, April 8, 2016	86	82	52	0
Saturday, April 9, 2016	138	78	54	T
Sunday, April 10, 2016	181	80	60	0.02
Monday, April 11, 2016	53	79	67	0.01
Tuesday, April 12, 2016	54	76	66	0.01
Wednesday, April 13, 2016	24	72	62	0.63
Thursday, April 14, 2016	52	76	60	0
Friday, April 15, 2016	60	79	58	0
Saturday, April 16, 2016	124	79	59	0.01
Sunday, April 17, 2016	91	76	65	0.71
Monday, April 18, 2016	7	70	64	9.92
Tuesday, April 19, 2016	28	79	65	0.02

Total	1,562
Average Daily Usage	87
Average Daily Usage (Weekday)	55
Average Daily Usage (Weekend)	150

*Weather conditions recorded at Hobby Airport.



Hourly Usage Trail at Mile Marker #25			
Time of Day	Average Users Per Hour	Average Users Per Hour (Weekdays)	Average Users Per Hour (Weekends)
12:00 a.m.	0.0	0.0	0.0
1:00 a.m.	0.6	0.0	1.8
2:00 a.m.	0.0	0.0	0.0
3:00 a.m.	0.0	0.0	0.0
4:00 a.m.	0.0	0.0	0.0
5:00 a.m.	0.2	0.3	0.0
6:00 a.m.	0.9	0.5	1.7
7:00 a.m.	2.7	0.9	6.3
8:00 a.m.	5.8	2.9	11.5
9:00 a.m.	8.6	4.7	16.5
10:00 a.m.	8.4	6.0	13.2
11:00 a.m.	8.7	4.4	17.3
12:00 p.m.	6.7	2.3	15.3
1:00 p.m.	5.6	1.8	13.3
2:00 p.m.	6.0	2.5	13.0
3:00 p.m.	4.5	2.3	9.0
4:00 p.m.	4.7	2.2	9.8
5:00 p.m.	9.4	9.2	10.0
6:00 p.m.	10.0	10.3	9.5
7:00 p.m.	3.7	4.8	1.3
8:00 p.m.	0.2	0.3	0.0
9:00 p.m.	0.0	0.0	0.0
10:00 p.m.	0.0	0.0	0.0
11:00 p.m.	0.1	0.0	0.2



Participants

City of Seabrook

www.seabrooktx.gov

Houston-Galveston Area Council: Pedestrian-Bicyclist Planning

www.h-gac.com/go/pedbike

Texas Transportation Institute

<http://tti.tamu.edu/>