



Tom Douglas

Explore Nature on Houston Area Paddling Trails

Parks and Natural Areas Roundtable

July 11, 2022

20190401_171901



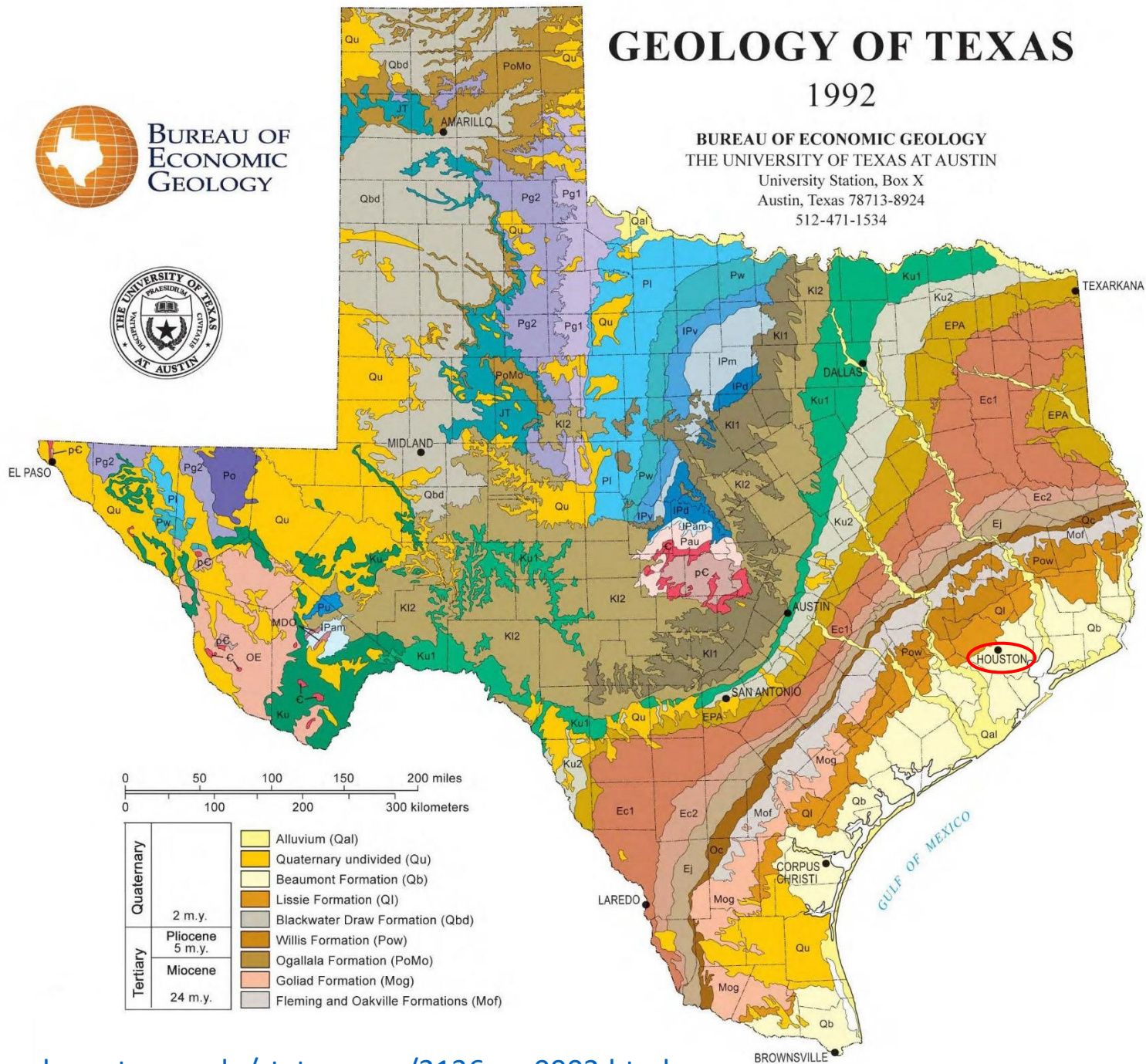
BUREAU OF
ECONOMIC
GEOLOGY



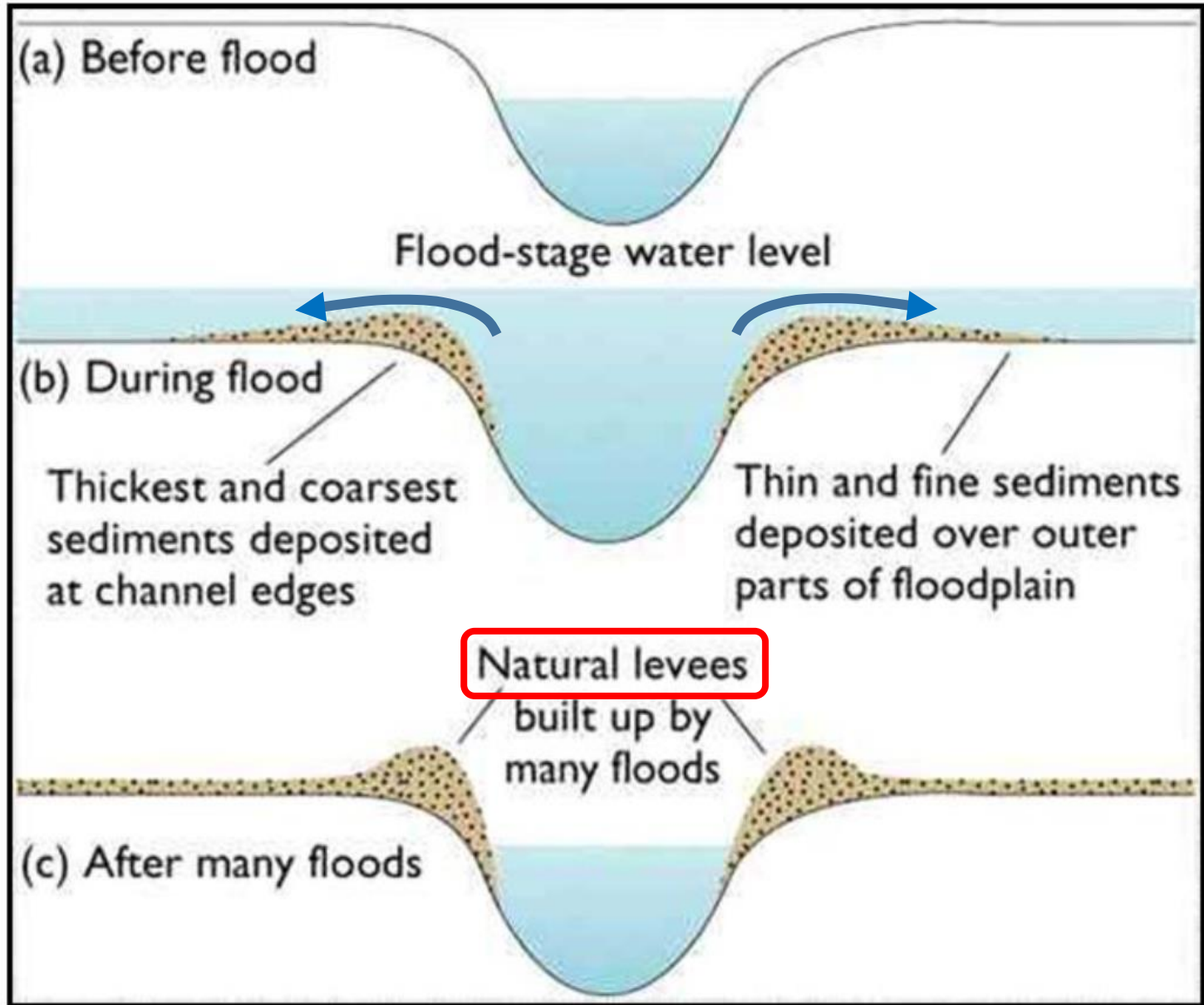
GEOLOGY OF TEXAS

1992

BUREAU OF ECONOMIC GEOLOGY
THE UNIVERSITY OF TEXAS AT AUSTIN
University Station, Box X
Austin, Texas 78713-8924
512-471-1534

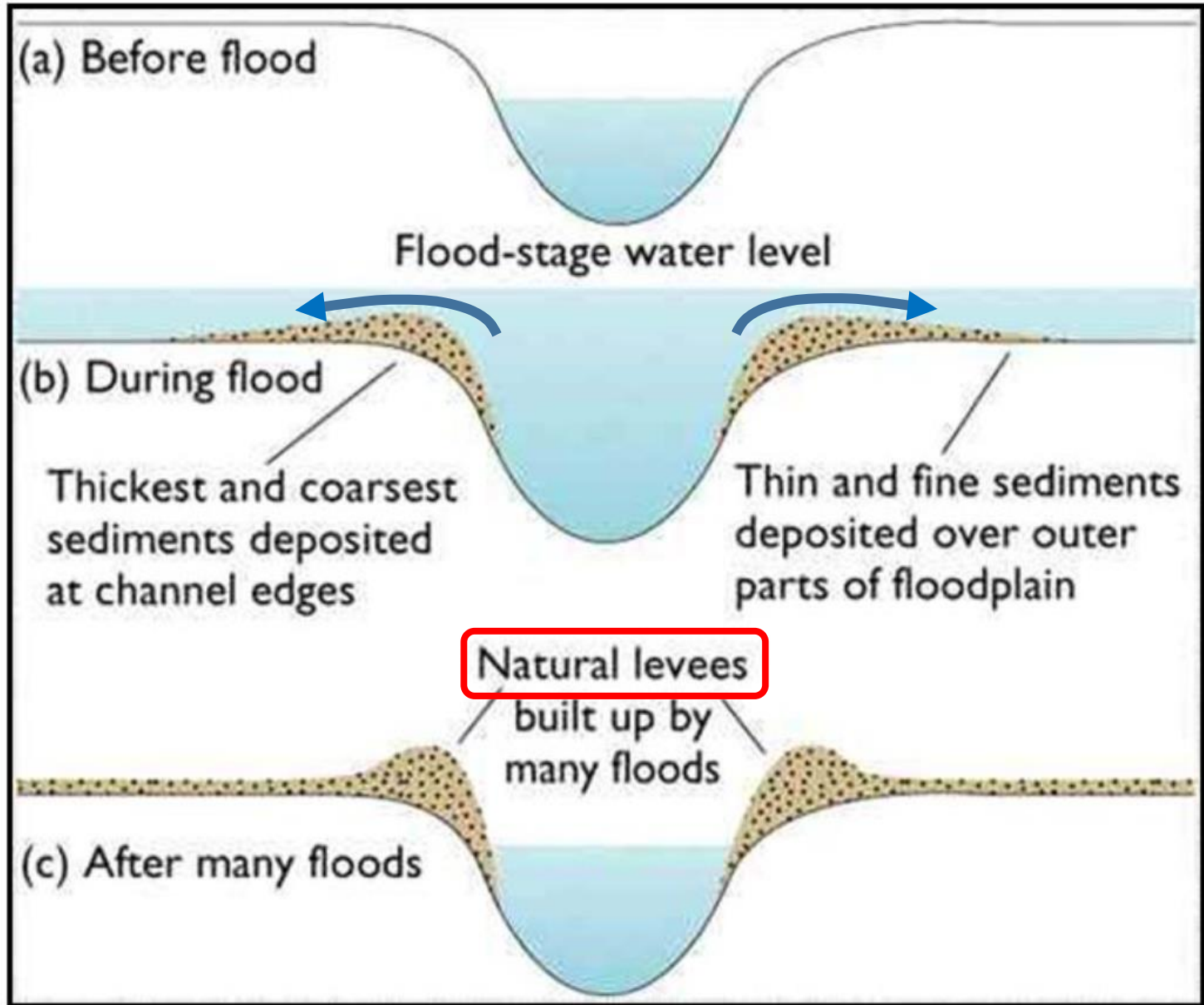


How a Natural River Levee is Formed





How a Natural River Levee is Formed



Brazos River

Cypress Creek

Meander Belt Ridge

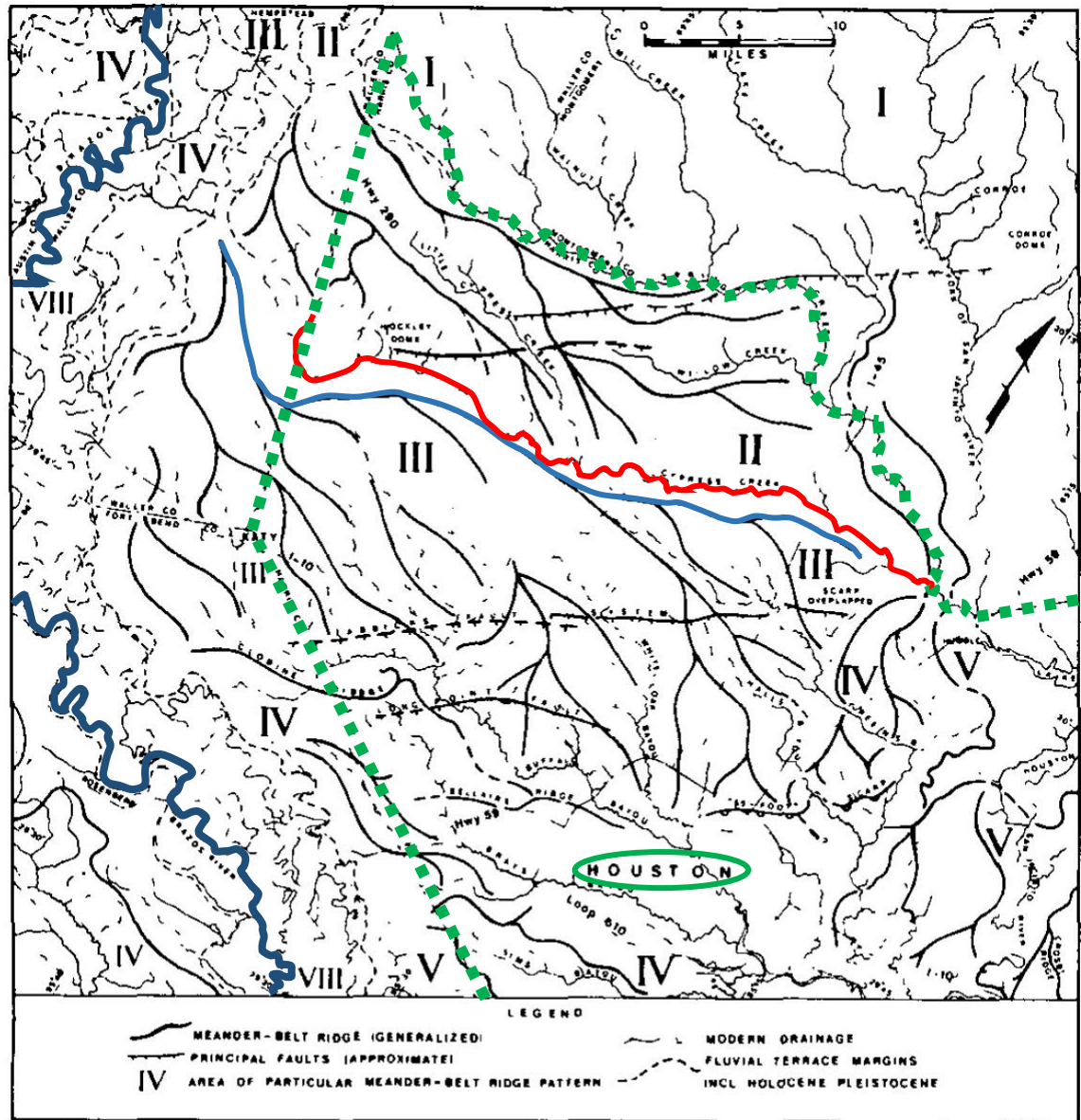
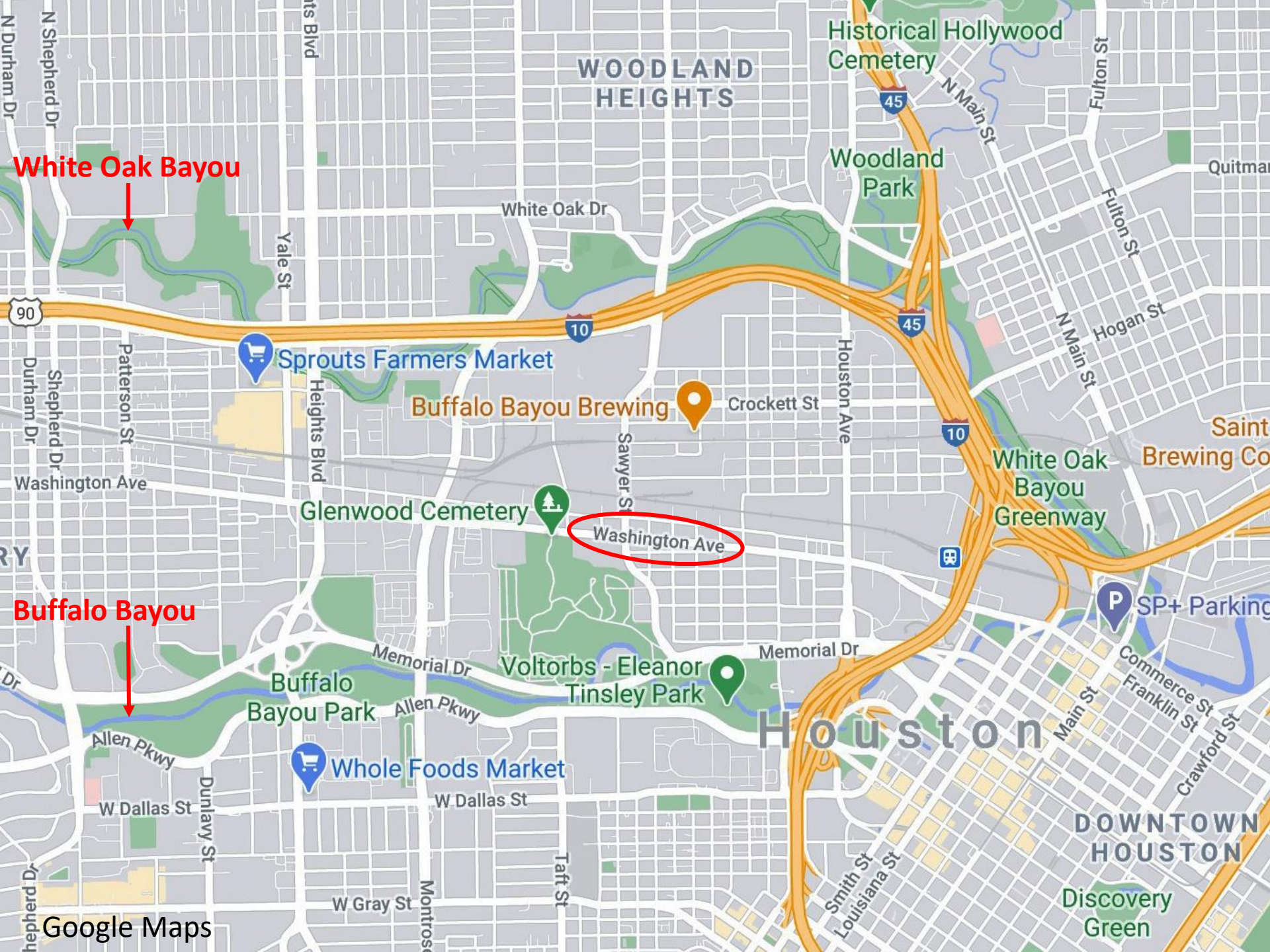


Figure 6. Reconstructed Middle and Early Pleistocene meander-belt ridge systems northwest of Houston. These pass into corresponding fluvial terraces along the Brazos River in the west corner of the figure.

W.R. Dupré, 2019

D.C. Van Siclen, 1985



White Oak Bayou

Buffalo Bayou

57 feet/mile



Ocoee River

Nantahala Outdoor Center

24 feet/mile



Nantahala Outdoor Center

French Broad River

Gradient: 307 feet over 65.4 miles = 4.7 feet/mile

311 feet

Each area outlined on this map consists of more than one kind of soil. The map is thus meant for general planning rather than a basis for decisions on the use of specific tracts.

U. S. DEPARTMENT OF AGRICULTURE
SOIL CONSERVATION SERVICE
TEXAS AGRICULTURAL EXPERIMENT STATION
AND
HARRIS COUNTY FLOOD CONTROL DISTRICT

4 feet

GENERAL SOIL MAP HARRIS COUNTY, TEXAS

Scale 1:316,800
1 0 1 2 3 4 5 Miles

SOIL ASSOCIATIONS

NEARLY LEVEL, CLAYEY AND LOAMY, PRAIRIE SOILS

- 1 Lake Charles-Bernard association: Somewhat poorly drained, very slowly permeable, clayey and loamy soils
- 2 Midland-Beaumont association: Poorly drained, very slowly permeable, loamy and clayey soils

NEARLY LEVEL, LOAMY, PRAIRIE SOILS

- 3 Clodine-Addicks-Gessner association: Poorly drained, moderately permeable soils
- 4 Wockley-Gessner association: Somewhat poorly drained and poorly drained, moderately slowly permeable and moderately permeable soils
- 5 Katy-Aris association: Somewhat poorly drained and poorly drained, very slowly permeable soils

NEARLY LEVEL TO GENTLY SLOPING, LOAMY, FORESTED SOILS

- 6 Aldine-Ozan association: Somewhat poorly drained and poorly drained, very slowly permeable and slowly permeable soils
- 7 Segno-Hockley association: Moderately well drained, moderately slowly permeable soils

NEARLY LEVEL, FORESTED, BOTTOM LAND SOILS

- 8 Nahatche-Voss-Kaman association: Moderately well drained to poorly drained, rapidly permeable to very slowly permeable, loamy, sandy, and clayey soils

Revised 1976

2 feet/mile

Gessner Road



Buffalo Bayou

Texas Paddling Trails

TEXAS
PADDLING TRAIL

TEXAS
PARKS &
WILDLIFE

Paddling Trails
Home

Inland Trails

Coastal Trails

Safety & Ethics

Invasive Species

Future Trails

Frequently Asked
Questions

Paddling Events

Texas River
Guide

River Flow
Gages

What Laws
Apply?

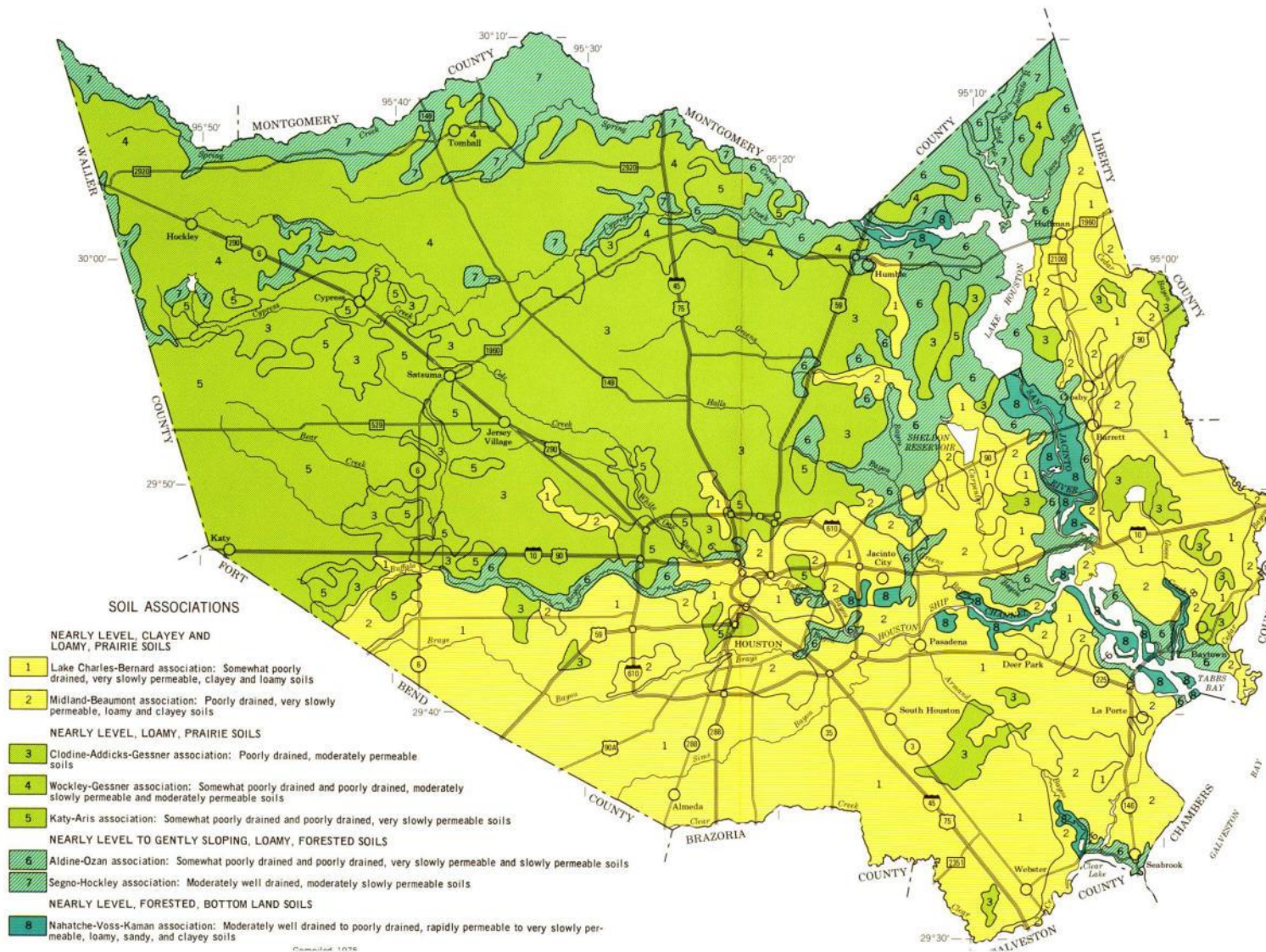
Welcome to Texas Paddling Trails!

Sabine Sandbar Paddling Trail Now Open

The newest Texas Paddling Trail, the [Sabine Sandbar Paddling Trail](#), offers quiet pools, small riffles, beautiful white bars, and great fishing for up to a full day's paddle on your choice of 4, 15, or 19 miles of trail.



Enjoy improved and maintained fishing and paddling access to rivers, creeks, lakes, ponds, bayous, and bays on any of the 78 official Texas Paddling Trails available throughout the state!!



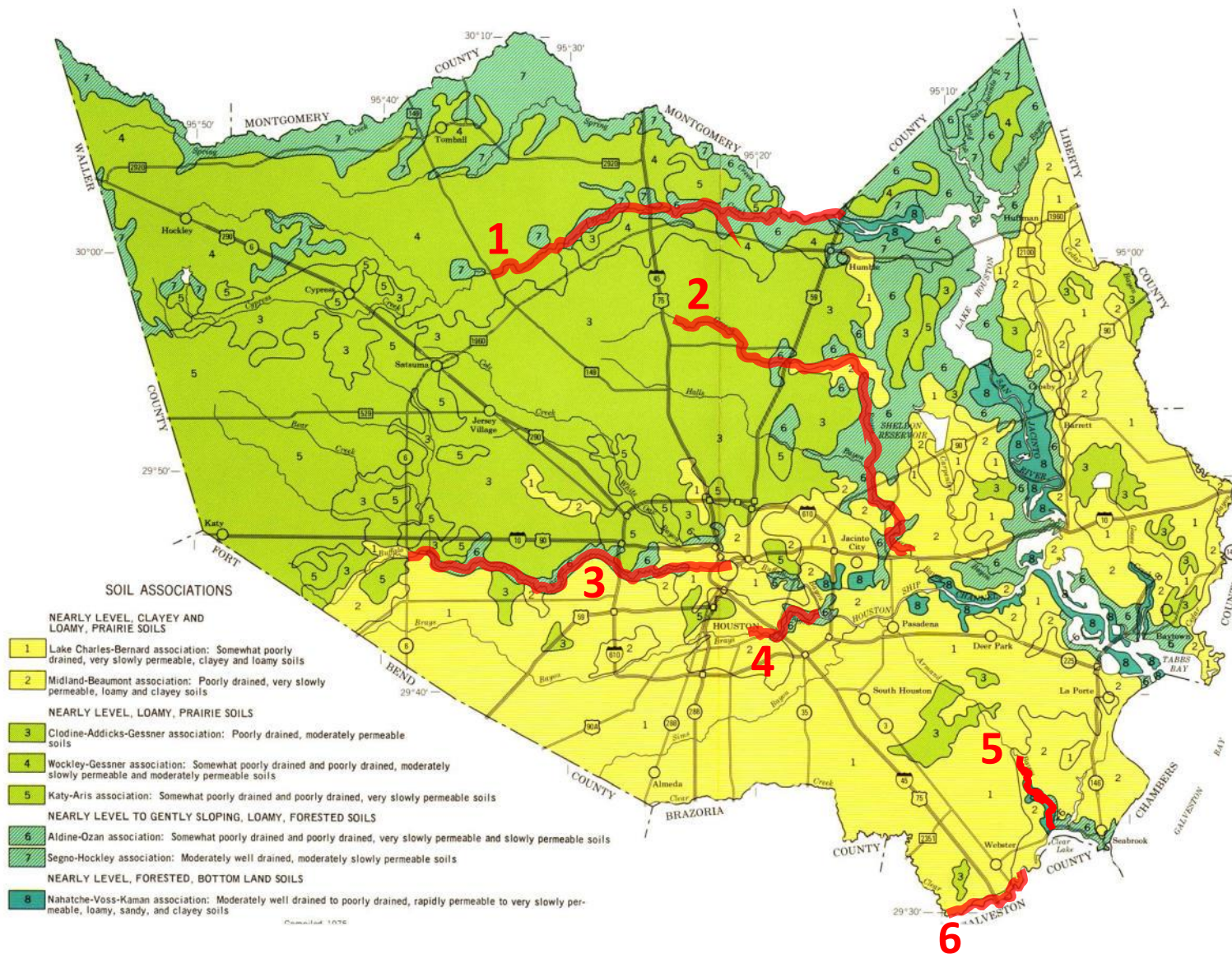
Each area outlined on this map consists of more than one kind of soil. The map is thus meant for general planning rather than a basis for decisions on the use of specific tracts.

U. S. DEPARTMENT OF AGRICULTURE
SOIL CONSERVATION SERVICE
TEXAS AGRICULTURAL EXPERIMENT STATION
AND
HARRIS COUNTY FLOOD CONTROL DISTRICT



GENERAL SOIL MAP HARRIS COUNTY, TEXAS

Scale 1:316,800
1 0 1 2 3 4 5 Miles

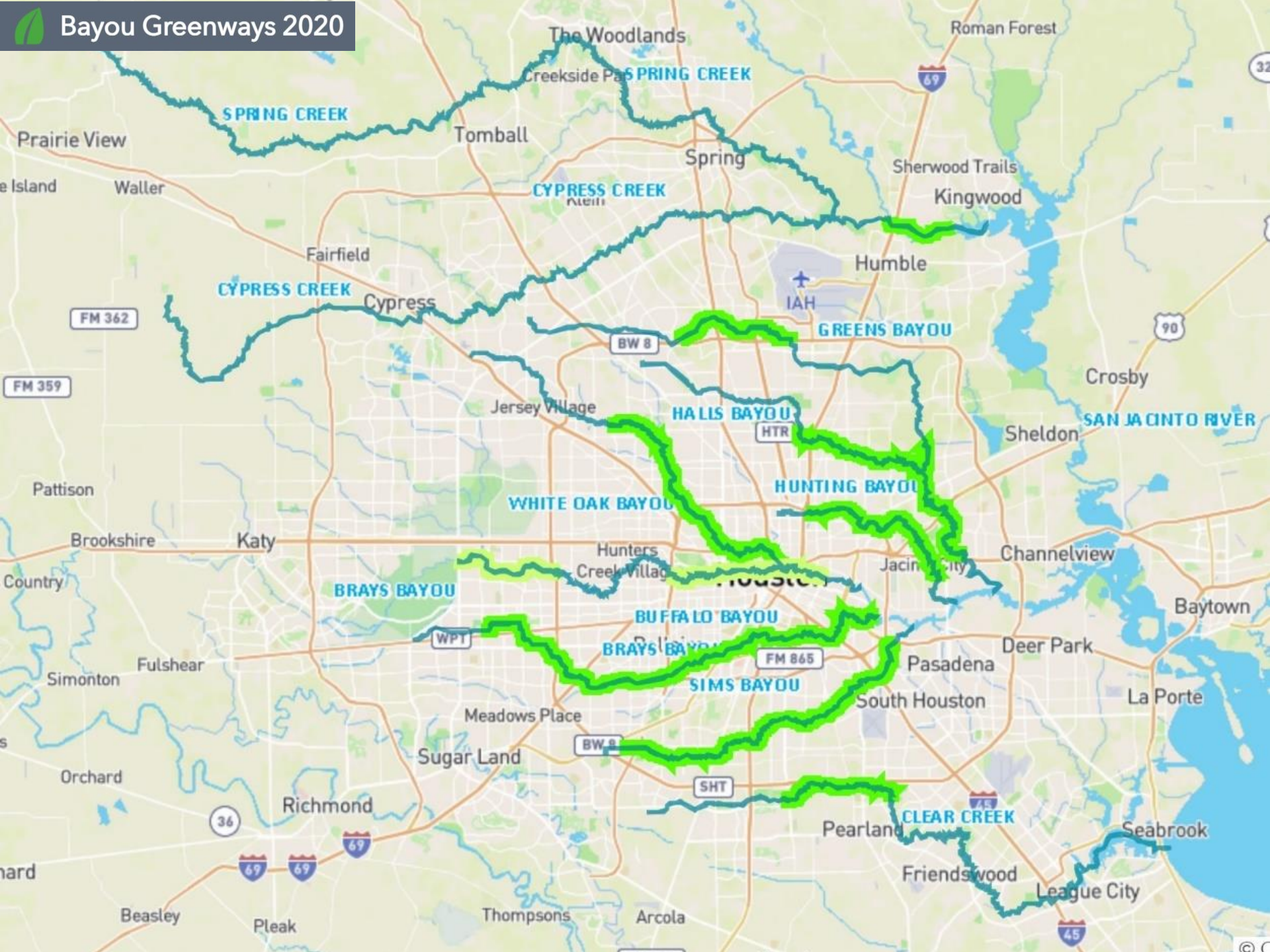


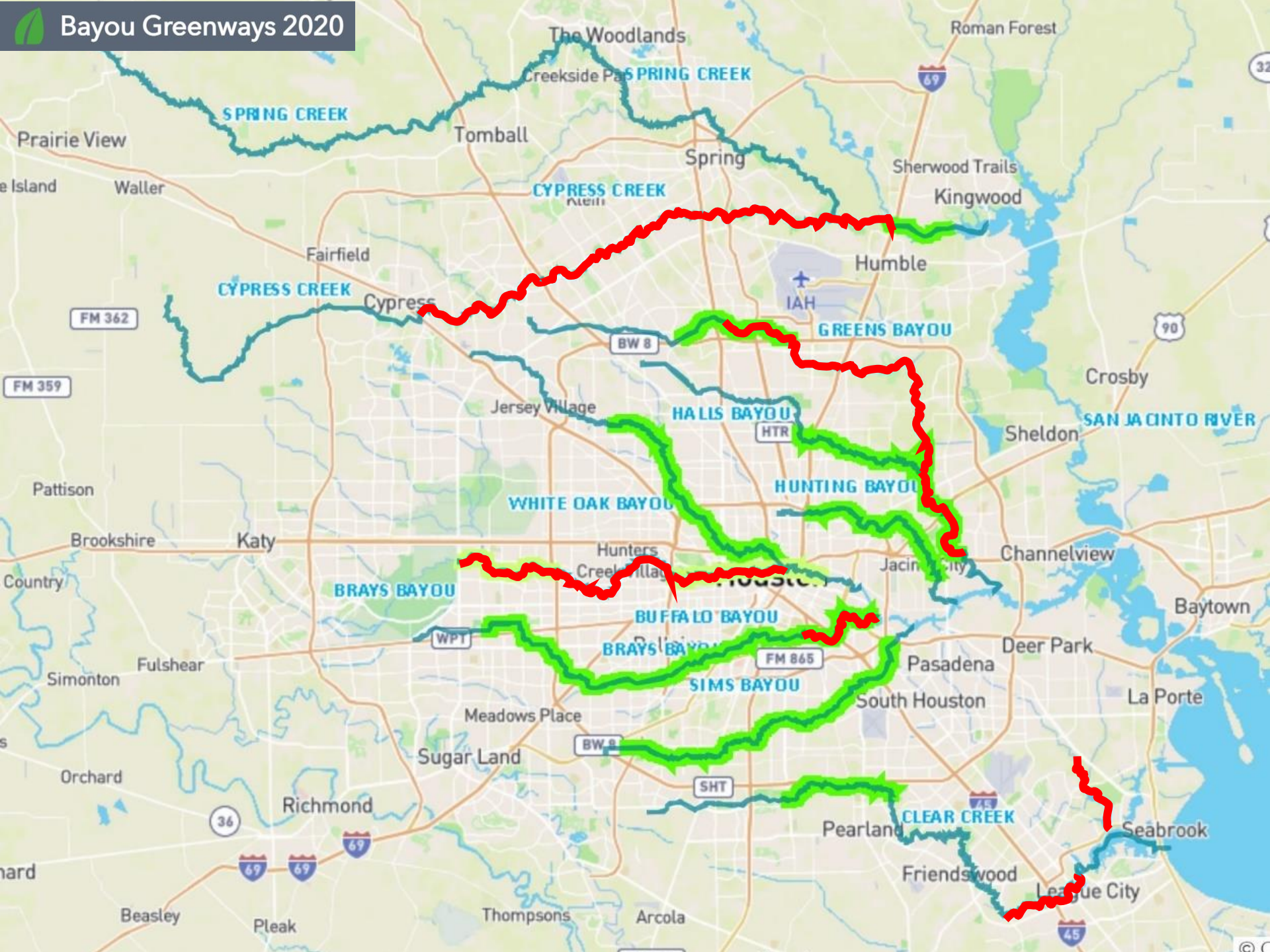
Each area outlined on this map consists of more than one kind of soil. The map is thus meant for general planning rather than a basis for decisions on the use of specific tracts.

U. S. DEPARTMENT OF AGRICULTURE
SOIL CONSERVATION SERVICE
TEXAS AGRICULTURAL EXPERIMENT STATION
AND
HARRIS COUNTY FLOOD CONTROL DISTRICT

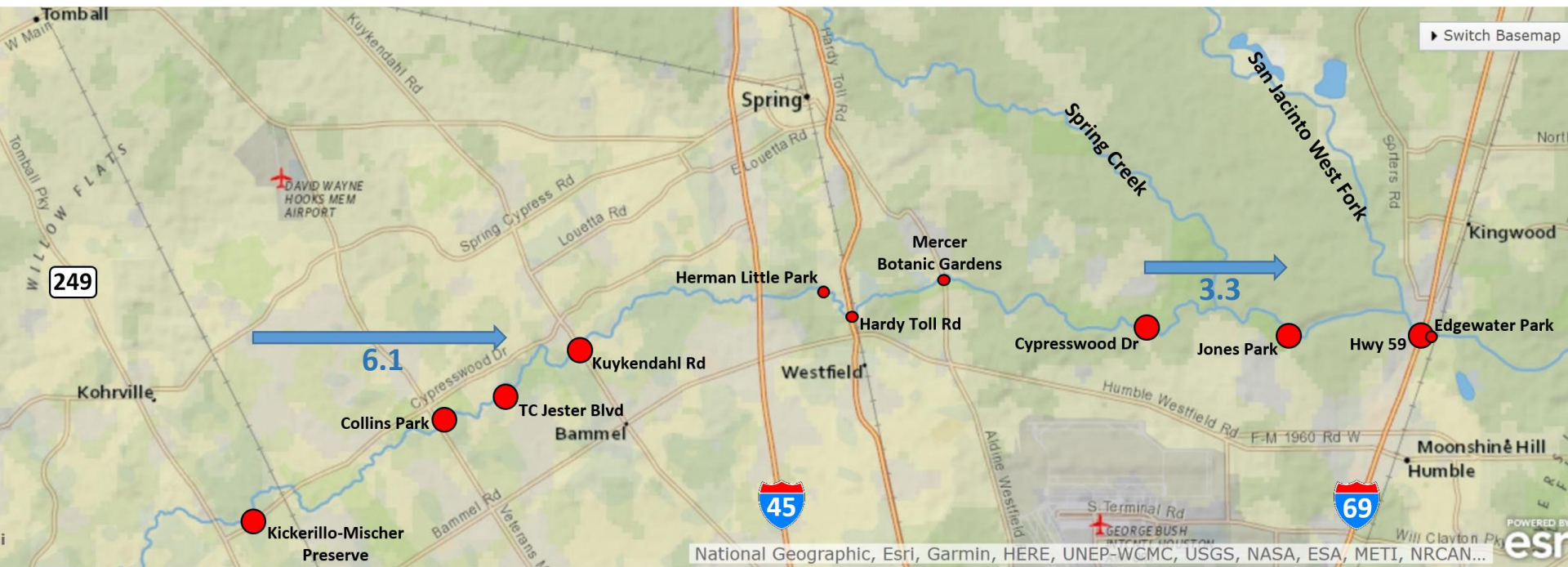
GENERAL SOIL MAP HARRIS COUNTY, TEXAS

Scale 1:316,800
1 0 1 2 3 4 5 Miles



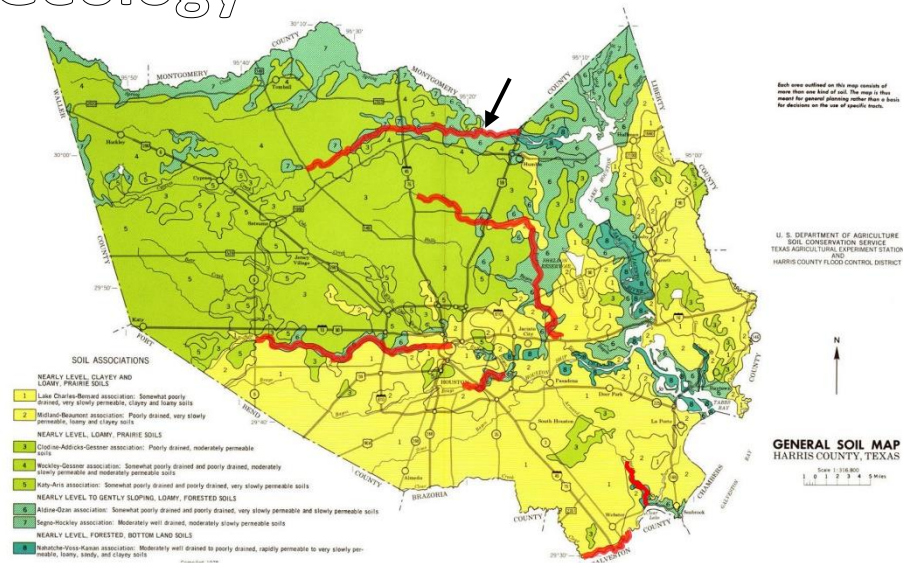


Cypress Creek Paddling Trail



Cypress Creek Paddling Trail	
Trail Length	25.8 miles
Sponsor	Bayou Preservation Association

Geology



<https://texashistory.unt.edu/ark:/67531/metaph130292/m1/1/>



Cypress Creek





Cypress Creek

River Management





TC Jester Blvd



Mercer Botanic Gardens

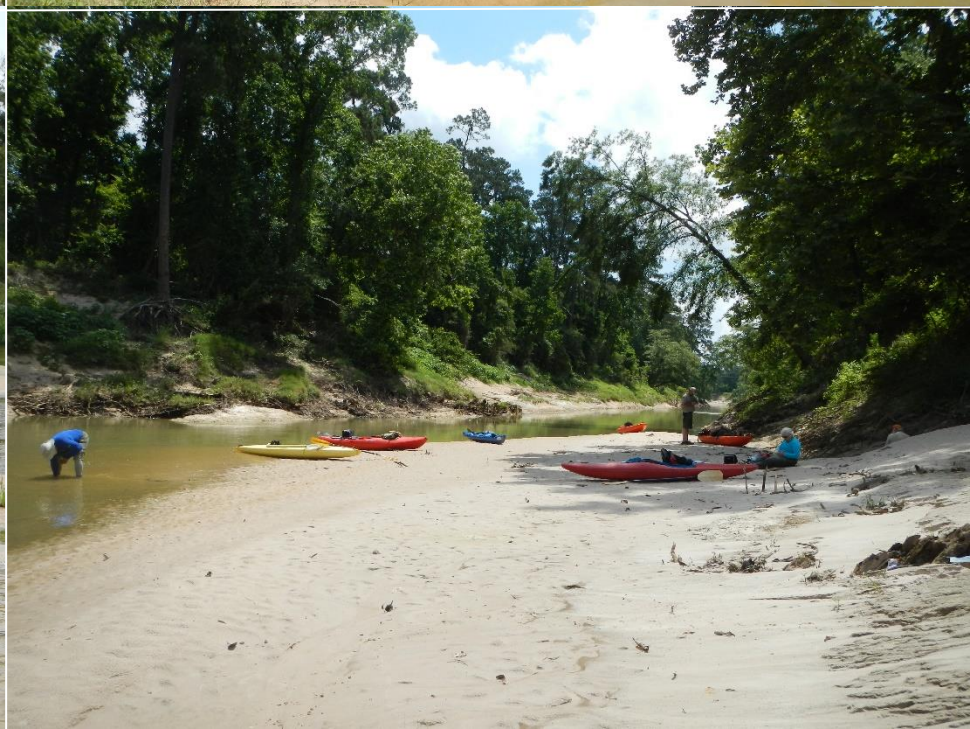


Mercer Botanic Gardens



Jesse H. Jones Park















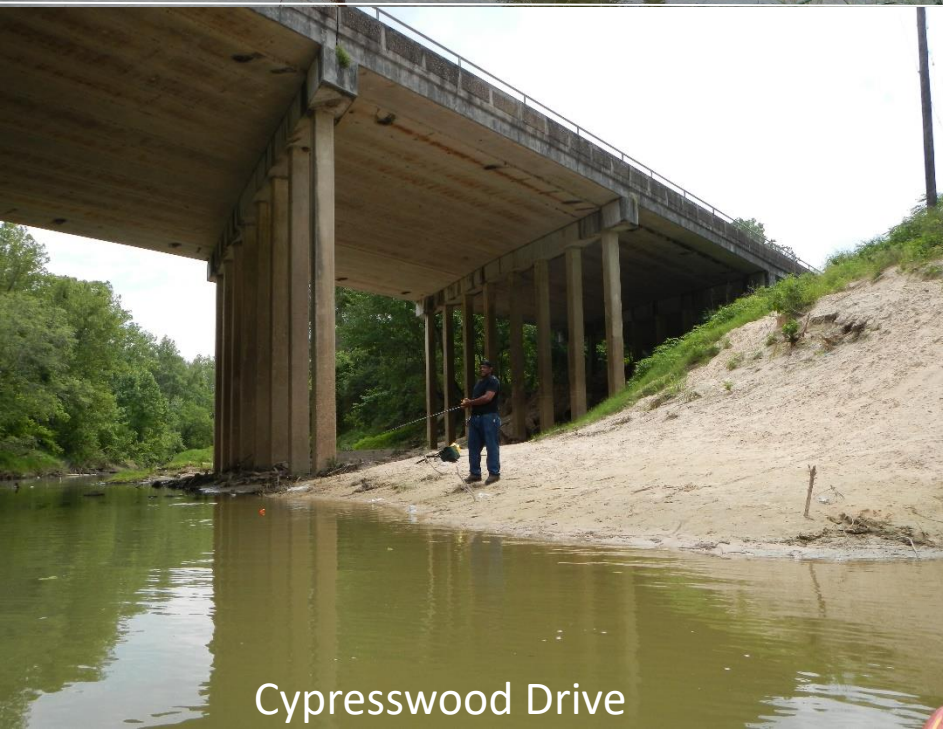
Portage!



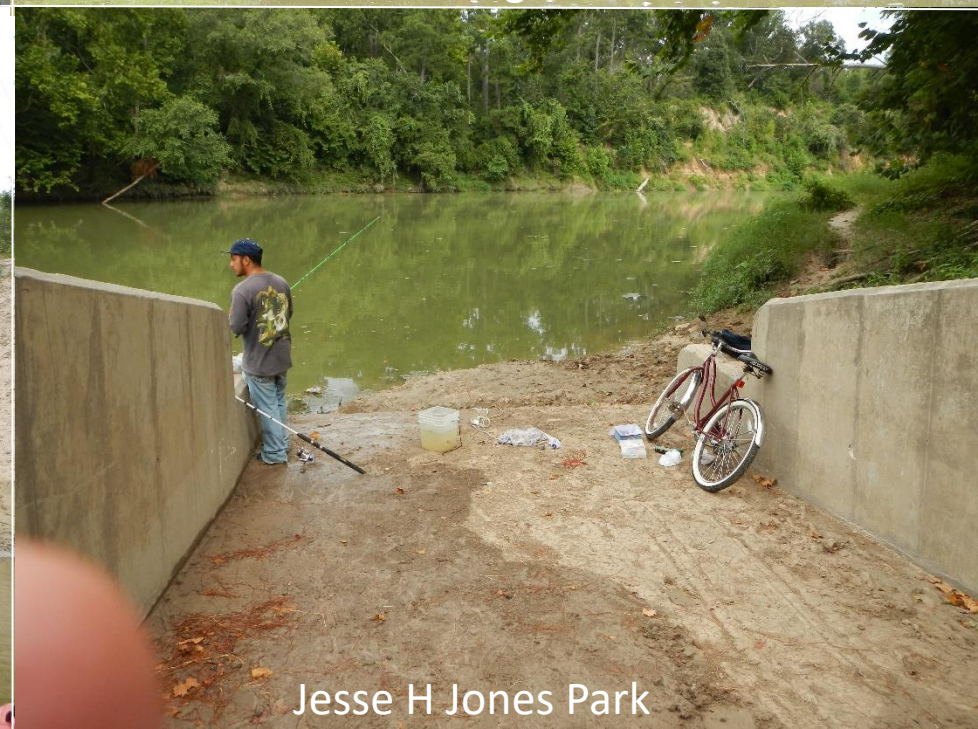
Kickerillo-Mischer Preserve



Treaschwig Road



Cypresswood Drive



Jesse H Jones Park





Rapids

Stuebner Airline Road



Strack Drive West

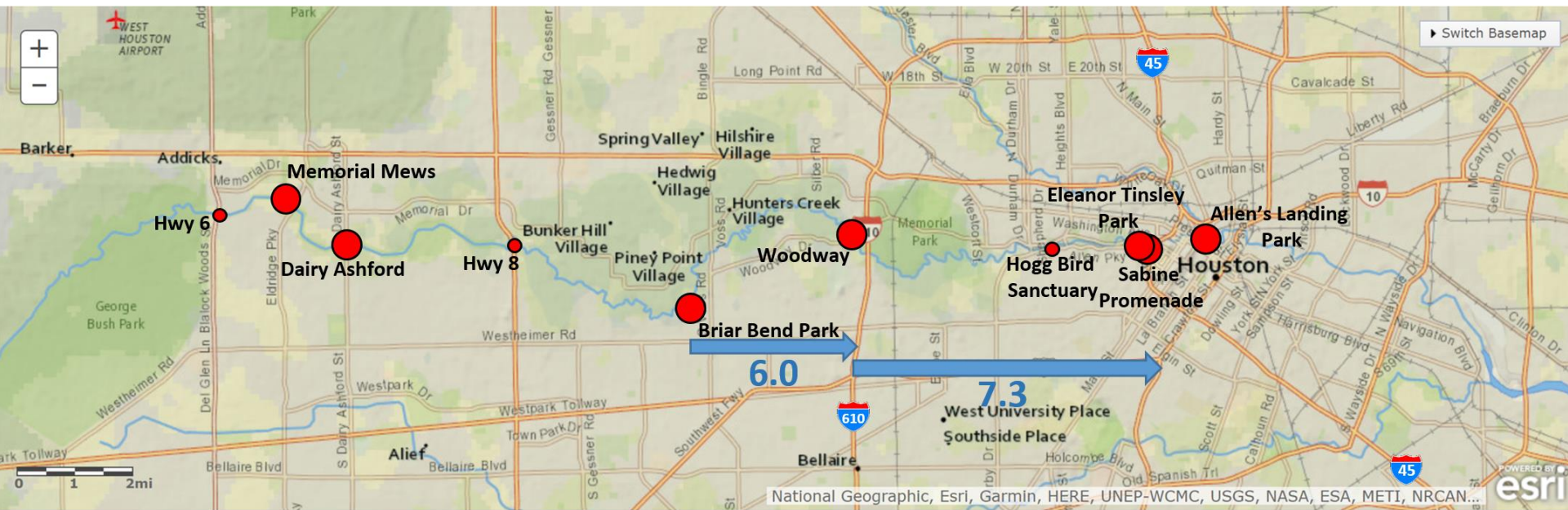


Between I-45 and Hardy Toll Road





Buffalo Bayou Paddling Trail



Buffalo Bayou Paddling Trail	
Trail Length	26.0 miles
Sponsor	Bayou Preservation Association



Launch Sites

Buffalo Bayou

Clodine Ditch

Hwy 6



Memorial Mews
Terry Hershey Park



Langham Creek
Terry Hershey Park



Woodway Drive



Upper Bayou



Lower Bayou



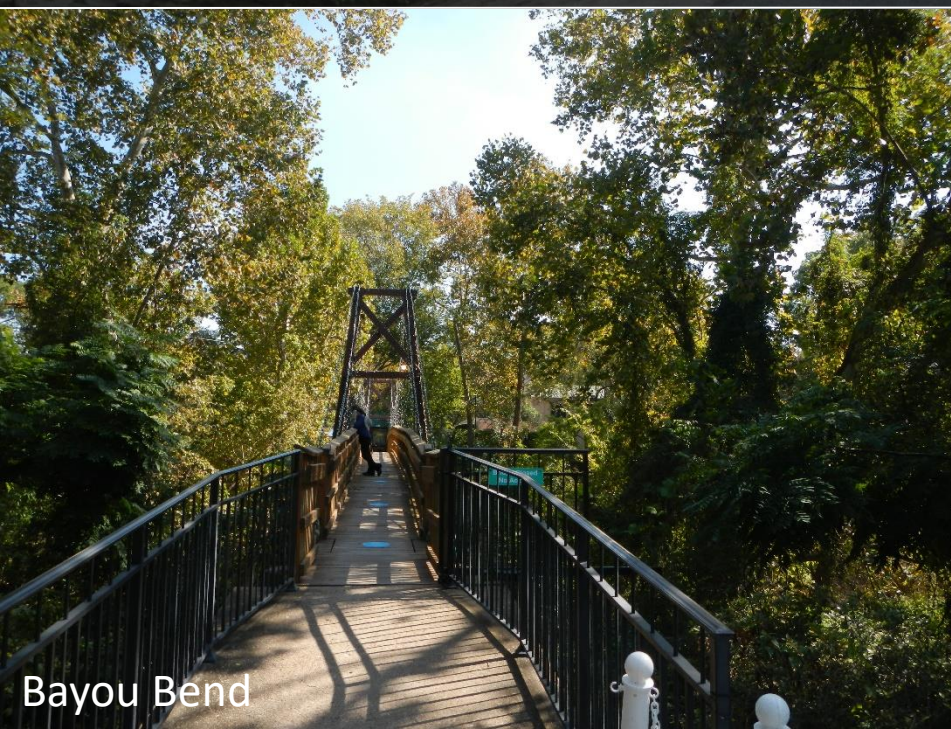


Other Recreation

Hwy 8



Briarbend Park

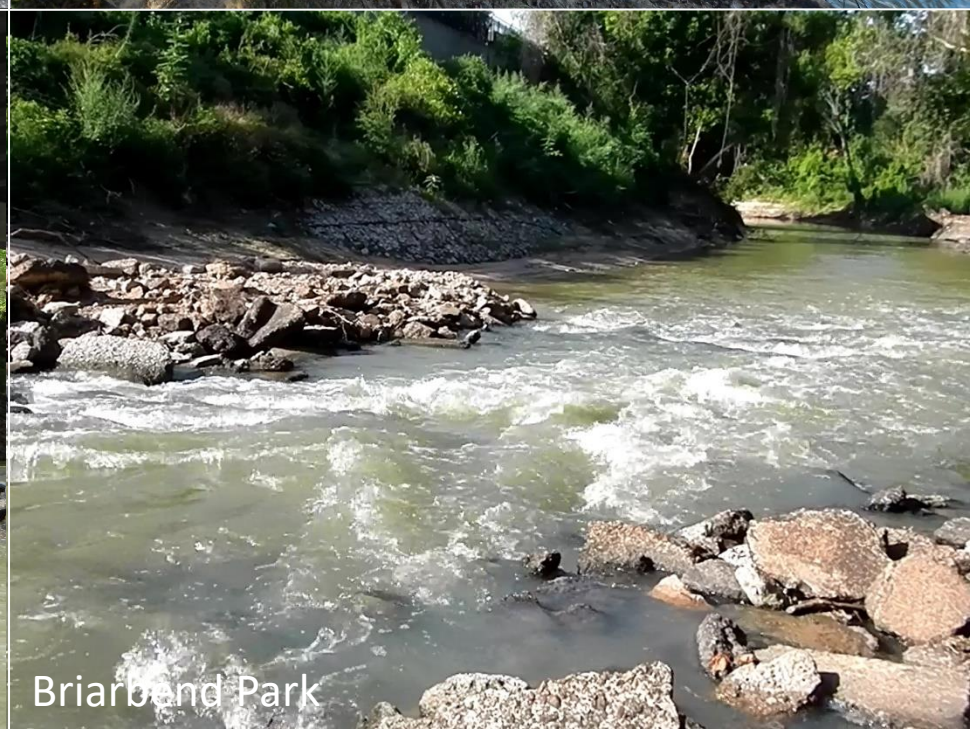


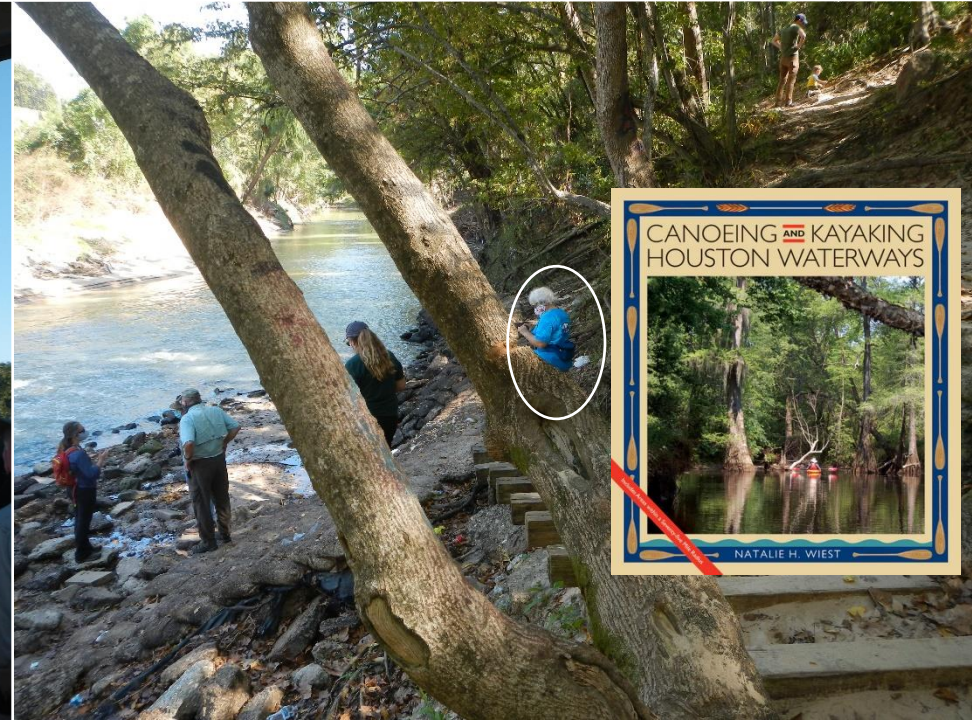
Bayou Bend



White Oak Confluence

Houston Parks Board





What to Take with You on a Guided Trip

- Plenty of Water
- Hat
- Sunscreen
- Insect repellent
- Clothes that can get wet
- Shoes that will not come off in mud



What Else to Take with You on a Self-Guided Trip

- Boat
- Paddle/Spare Paddle
- Life Jacket (PFD)
- Other Experienced Paddlers
- Map, Compass
- Snack/Lunch
- First Aid Kit
- Cell Phone
- Towel and Dry Clothes



What to Leave with Someone Else

A “Float Plan”

- Who is going
- Where You Plan to Go
- When You are Expected Back
- What to Do if You are Not

Happy (Paddling) Trails to You



