



HOUSTON-GALVESTON AREA COUNCIL



Revitalization Roundtable

Wednesday, July 20, 2016



Breakfast Sponsored by



KENDIG KEAST
COLLABORATIVE



HOUSTON-GALVESTON AREA COUNCIL



Revitalization Roundtable
Welcome to Downtown Alvin



HOUSTON-GALVESTON AREA COUNCIL



Revitalization Roundtable
H-GAC Online Parks Grants Resource

Parks Grants

These are annual grant programs. Some due dates have passed but can be anticipated around this time every year.

Federal Programs

Green Infrastructure in Underserved Communities

Demonstrate the effectiveness of green infrastructure to positively affect environmental change in underserved communities, and increase community engagement, connection to nature, and physical activity. The Project must be at a park site in a low-income underserved community.

Offered By	National Recreation and Park Association
Eligible Entities	Parks and Recreation Agencies, Affiliated nonprofits
Total Program Funding	\$1,750,000
Max-Min Award per Project	\$575,000 Max Award
Match	None
Application Due Date	April 29, 2016

[Application Link](#)

www.h-gac.com/community/qualityplaces/parks/grants.aspx



HOUSTON-GALVESTON AREA COUNCIL



Revitalization Roundtable Downtown Public Spaces in La Grange

Stacey Norris:
City of La Grange

REVITALIZATION ROUNDTABLE

Downtown Parks

La Grange, TX

Founders Park

▣ Features

- Electrical Outlets
- Picnic Tables & Chairs
- Gated
- Historical panels on the Founders of Fayette County
- Lighting

▣ Missing

- Restrooms
- Bright lighting
- Signage



History of the Space

- ▣ According to history records, the lot housed Homuth Bros. Butcher Shop from 1891 - 1903.
- ▣ From 1906-1916, the building was used as a barbershop. By 1921, the building was gone.
- ▣ Two buildings were erected in 1923, one of which was used as a confectionary until 1931. From 1947 - 1971, one of the buildings was used as the La Grange Recreation Club.
- ▣ In 1979, the building was torn down and the lot remained vacant until this renovation took place. Over the years, the lot had become overgrown, due to neglect. As part of this renovation, the lot was donated to the county from a private owner.



Location



The site is this long, narrow parcel across the street from the Courthouse.

The Beginning

- ▣ Efforts began in January, 2011
- ▣ Space had become an economic and aesthetic liability to the community.
- ▣ Located in a prominent area within the historic Fayette County Courthouse Square in La Grange, TX and is quite visible to the public.
- ▣ Headed by the Fayette County Judge
- ▣ Design assistance provided by Texas Historical Commission
- ▣ Grand opening – May, 2012



Unique Features

- ▣ Icons of Fayette County – two thick, round millstones the size of old-fashioned wagon wheels. Created in Scotland in the late-1820s to fill an order for Austin colonist William Rabb. He needed them to complete construction of a gristmill on his large land grant from Stephen F. Austin. Although Rabb had agreed to construct the mill in exchange for the land when he arrived in Austin's colony in the early 1820s, Indian trouble delayed its actual construction until almost 1830. That's when the authorities in San Felipe de Austin gave him another 18 months to comply.
- ▣ When the stones arrived from Scotland at the Port of Matagorda on the Texas Coast, the Colorado River was too shallow and obstructed to float them upriver to Rabb's property so Plan B was implemented. Rabb used a log for an axle and teams of oxen for power and rolled them back home through 13,000 acres of land. After a flood destroyed the mill, the stones were buried by silt and debris for many years, but eventually in the 1950s they were uncovered by another deluge. Once recovered, the stones were privately owned and continue to be as they are on loan to the park for public view.

Millstones



The park acts as an educational tool that preserves the heritage of Fayette County.

Interpretative panels telling the stories of the early families of Fayette County are emplaced around the perimeter of the Park and number 21.

Investment Costs

- ▣ Initial investment \$60,000
 - County funded
 - City provided chairs/ tables
 - ▣ City provides minor maintenance for outlets, equipment, etc.
 - ▣ City used Main Street resources to obtain the Texas Historical Commission's Design Center Report

Report Findings

The property in question is in a prominent location within the Historic Courthouse Square. The site is narrower in width than a typical lot in the downtown, but the depth (front to back) is typical. There are no structures on the site, but there are remnants of a drainage culvert and foundation remains from a previous structure.

3 Options Presented by THC

- ▣ County Administrative Offices located next door might expand into the property,
- ▣ Property might become an urban pocket park with benches and landscaping for use during lunch or social occasions,
- ▣ Property might be used as a location for restroom facilities.

Options

Pocket Pack

- ▣ The site can accommodate a functional pocket park, but a pocket park shouldn't run the whole depth of the property; it would be too long for its width.

Public Restrooms

- ▣ The property can accommodate public restrooms, but they would take up the full width of the property leaving no room for a pocket park.

It really is a matter of one or the other; public restrooms or a pocket park, but not both unless the restrooms are placed towards the rear of the property which is not recommended.

Public's Expectations

1. Shade when it is hot,
2. Sun when it is cool,
3. Covered areas when it is raining,
4. Water when they are thirsty,
5. Tidy trash receptacles,
6. Comfortable seating,
7. Attractive and durable landscaping,
8. And sometimes, a place for children to play.

When only a few of these things are considered, the pocket park is less likely to be used and it will, in turn, become an eyesore instead of an asset.

Pocket Park Design Phase

The first consideration in the design of this park was the transition from West Colorado to the garden.

The transition needs to be gradual; the visitor is going from a commercial sidewalk environment to a quiet sanctuary, of sorts, and just as a private home contains a vestibule to make the transition from public to private, so too should the pocket park.



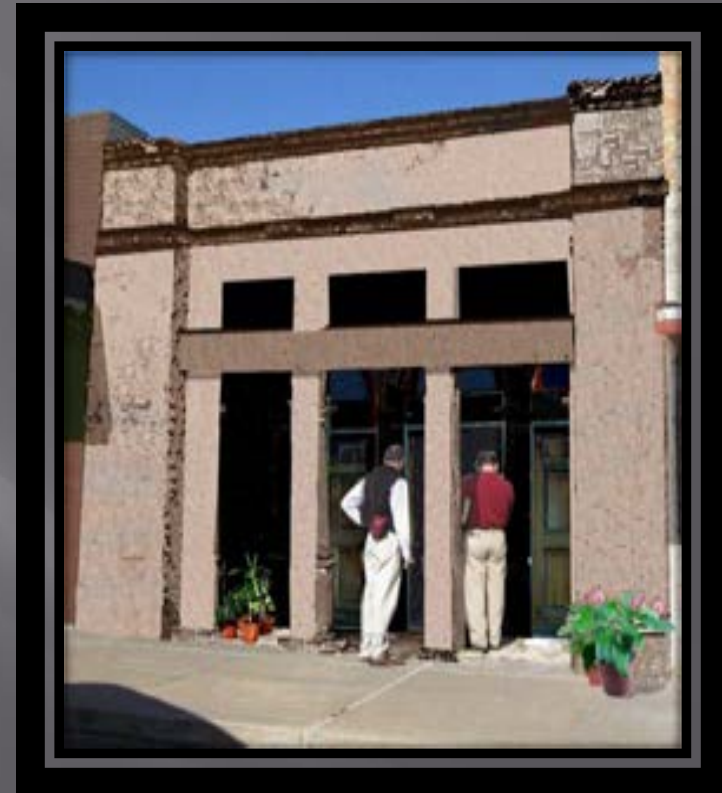
Park – Option #2

One final option would be to not have any type of structure built upon the site at all and just create a simple park with a gate at the front.



Restrooms Design Phase

- ▣ The site is so narrow that it can only accommodate the width of two accessible stalls placed back-to-back.
- ▣ The accessible drinking fountain is common to both restrooms and is located in the covered area.



Events - Schmeckenfest



Challenges

- ▣ Treated as a traditional park
 - Stationary furniture
 - User has to make the effort to engage
 - Not programmed
 - Locked gate (hours of operation)

Realistic Use of Space

- ▣ Fayette County Courthouse Lawn
 - Maintained by the county
 - Restrooms on-site at the Courthouse
 - Used for all downtown events – Movie Nights on the Square, La Grange Uncorked, Oktoberfest, Trick or Treat, Schmeckenfest

Movie Nights on the Square



Trick or Treat on the Square



Schmeckenfest



Contact Information

Stacey Norris, La Grange Main
Street & Tourism Manager

979-968-3017

Snorris@CityofLG.com



HOUSTON-GALVESTON AREA COUNCIL



Revitalization Roundtable Events in Parks and Public Spaces

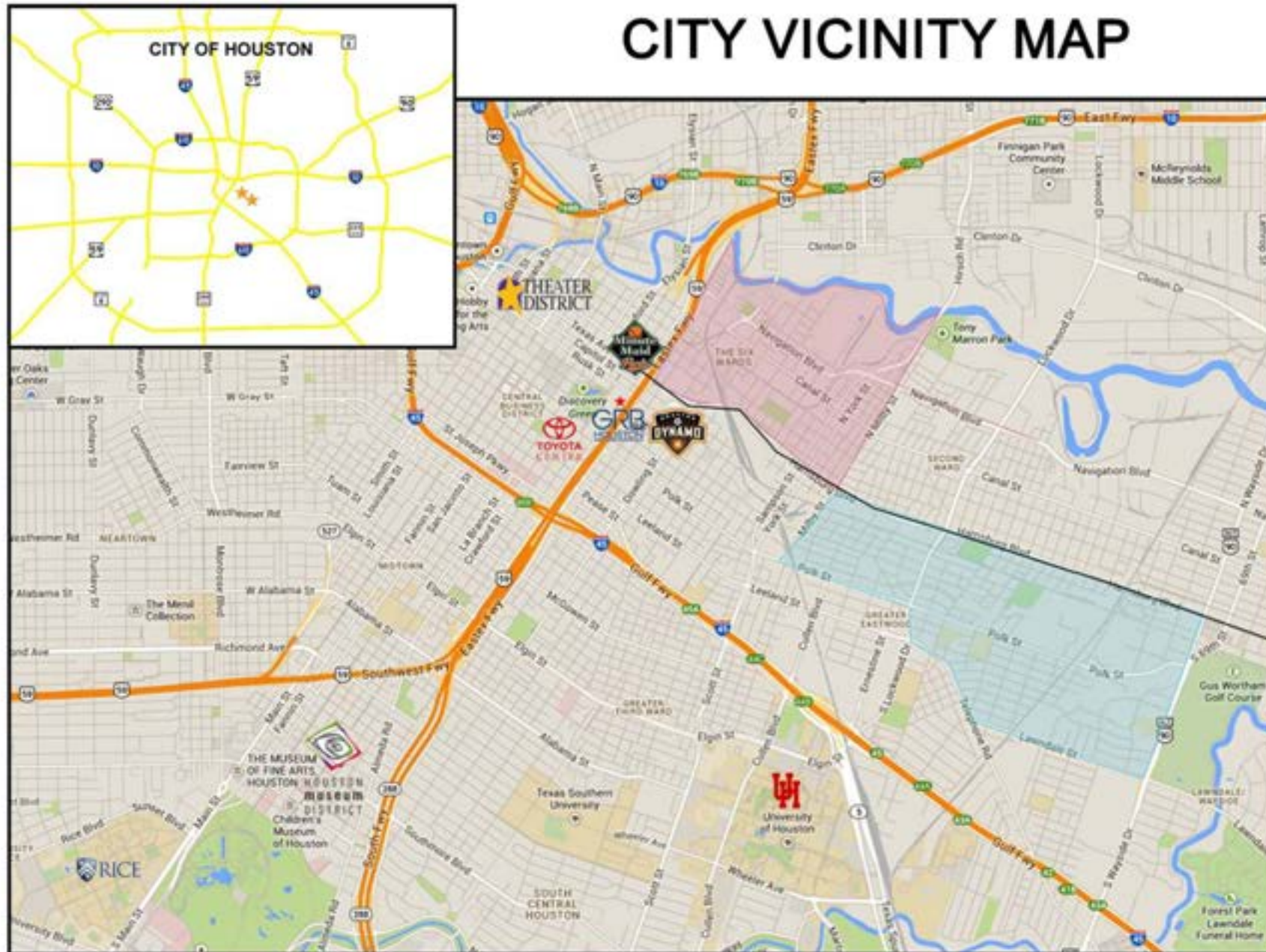
Diane Barber:
East End Foundation



East End Cultural District

- 1 of 28 Cultural Districts in Texas
- 1 of 5 Cultural Districts in Houston
 - Museum District
 - Theater District
 - Washington Corridor
 - Midtown

CITY VICINITY MAP



Mission

The mission of the East End Foundation is to celebrate the unique history, culture, and neighborhoods of Houston's East End by strengthening its cultural and educational organizations, and to develop opportunities for residents to participate in cultural and educational enrichment activities.

Our focus...

Celebrating the East End through its rich history, its incredible culinary offerings, and its dynamic cultural community.

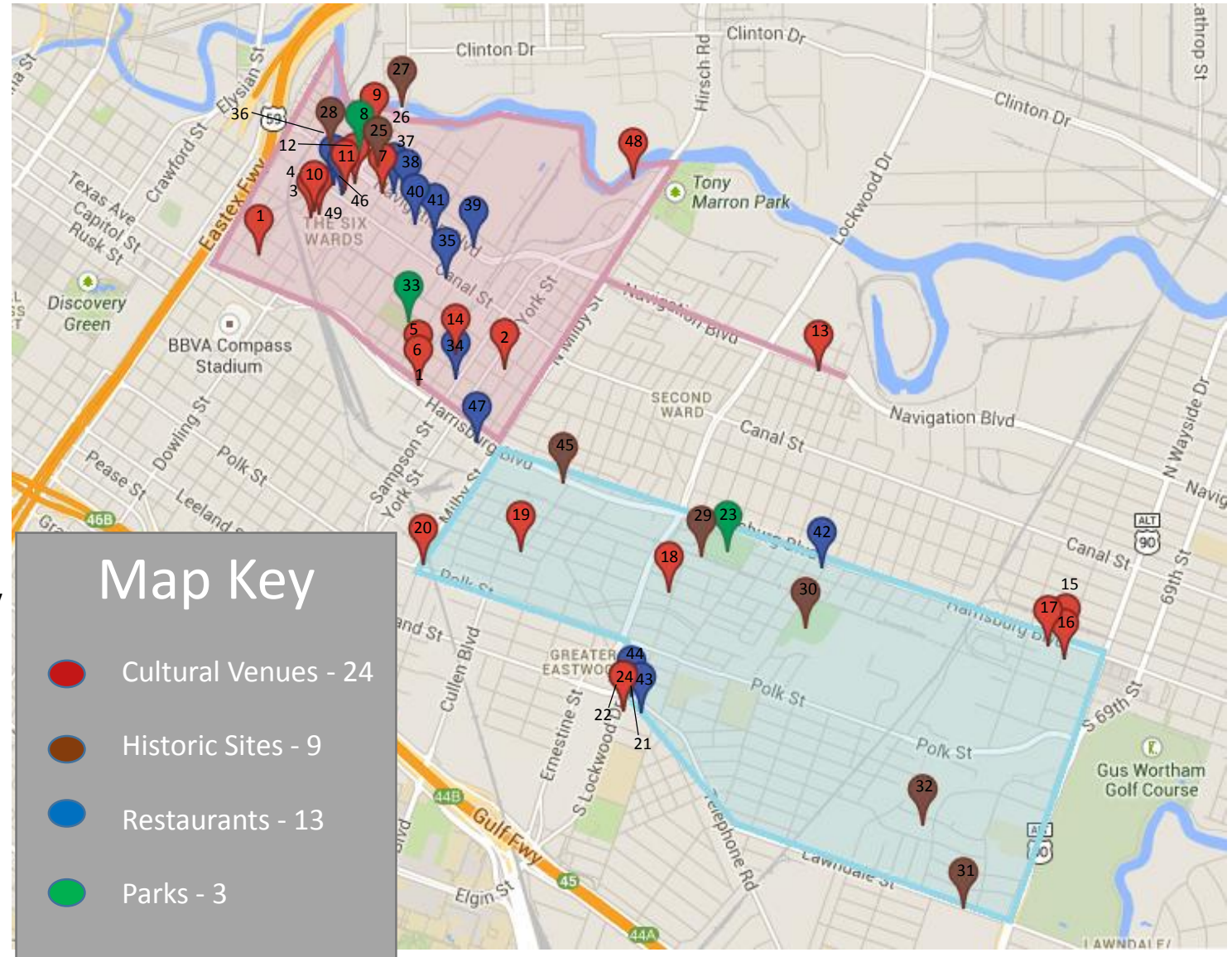


Cultural Programming



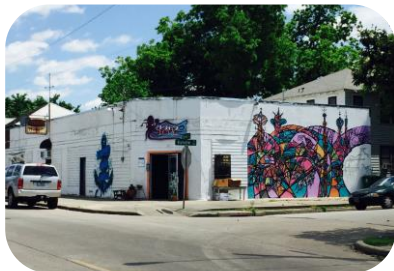
Houston East End Cultural District Assets

- | | |
|---|--|
| 1. The Barn | 28. Marquis Downtown |
| 2. Houston Makerspace | 29. Eastwood Planned Community |
| 3. Art Square Studios | 30. Evergreen Cemetery |
| 4. Post-Square Studios | 31. Villa de Matel |
| 5. El Rincon Social | 32. Angelo & Lillian Minella House |
| 6. Greater East End Management District | 33. Settegast Park |
| 7. East End Market | 34. Champ Burger |
| 8. Guadalupe Plaza Park | 35. Moon Tower Inn |
| 9. Talento Bilingue de Houston | 36. Alamo Tamales and Tacos |
| 10. Houston Red Door Productions | 37. Merida Restaurant |
| 11. Mercury Baroque | 38. Dona Maria |
| 12. Urban Harvest | 39. Villa Arcos |
| 13. Frenetic Theater | 40. The Original Ninfas |
| 14. TX/RX | 41. El Tiempo |
| 15. Box13 | 42. Lennox Barbeque |
| 16. Capitol Street Gallery and Studios | 43. Bohemeo's |
| 17. Marbella Banquet Hall | 44. Kanomwan Thai Restaurant |
| 18. Archi-Arts | 45. Maximus Coffee Group (Formerly Ford Model T factory) |
| 19. The Picasso Bus | 46. Andes Café |
| 20. Super Happy Funland | 47. Harrisburg Country Club |
| 21. Tlaquepaque Plaza | 48. Texas Dragon Boat Association |
| 22. Houston Institute for Culture | 49. FitMix Studios |
| 23. Eastwood Park | |
| 24. East End Studio Gallery | |
| 25. Our Lady Guadalupe Church | |
| 26. St. Vincent's Cemetery | |
| 27. Hill Street Bridge at Jensen and | |





713 Inc. Art & Apparel



4202 Screen Printing
Gallery



Artsquare Studios I



Artsquare Studios II



The Barn



Box 13 ArtSpace



Capital Street Gallery



El Rincon Social



Frenetic Theater



Houston Makerspace



Super Happy Fun Land



Talento Bilingue de
Houston



The Summit



East End Studio Gallery
+ Tres + Bohemeo's



White Swan



Sociedad Mutualista
Obrera Mexicana



The Shop



TX/RX Labs



Special Events

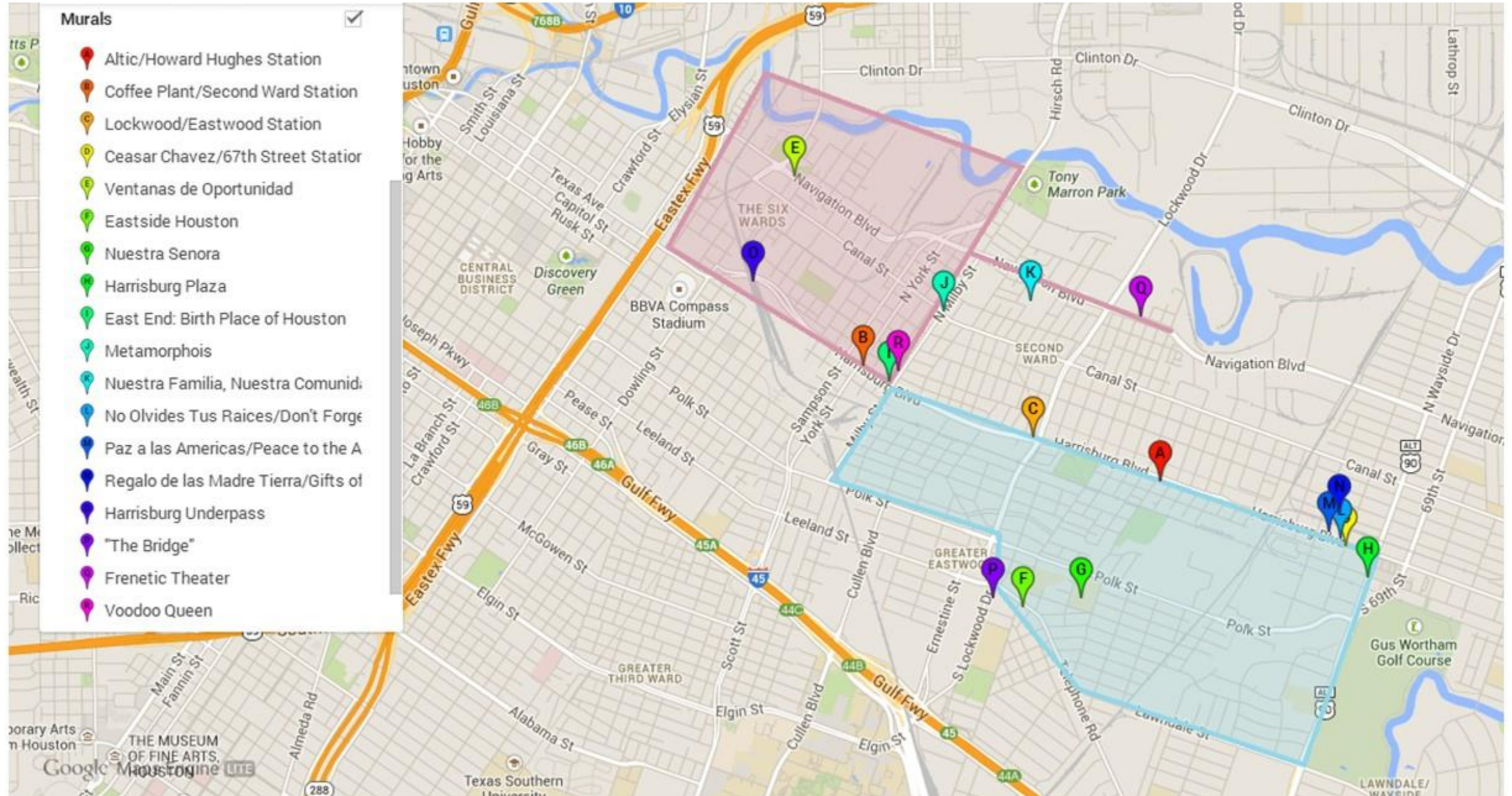


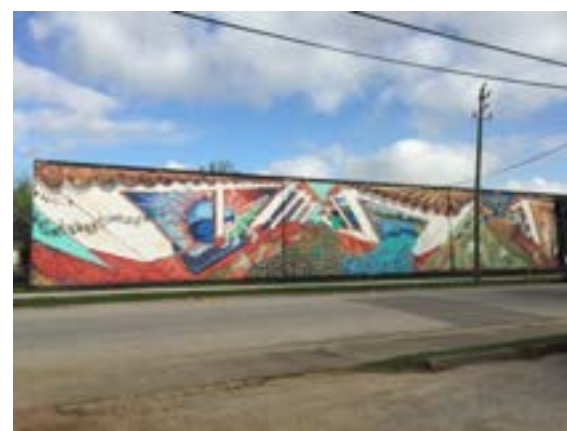


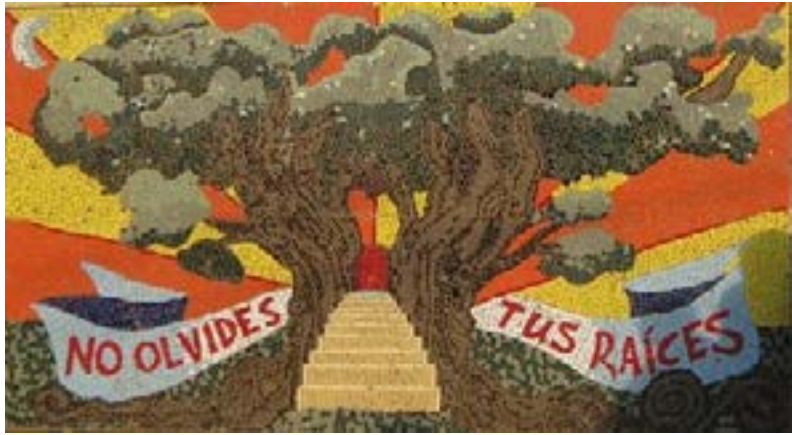


Public Art

Houston East End Cultural District's Mural Map







Functional Art



Bus Stop



Signage



Bike Rack



Lighting



Faux Bois Sculpture & Bench



Shade Structure



Trash Can



Bus Stop



Streetscape



Streetscape



Rail Stop



Wayfinding



Special Projects





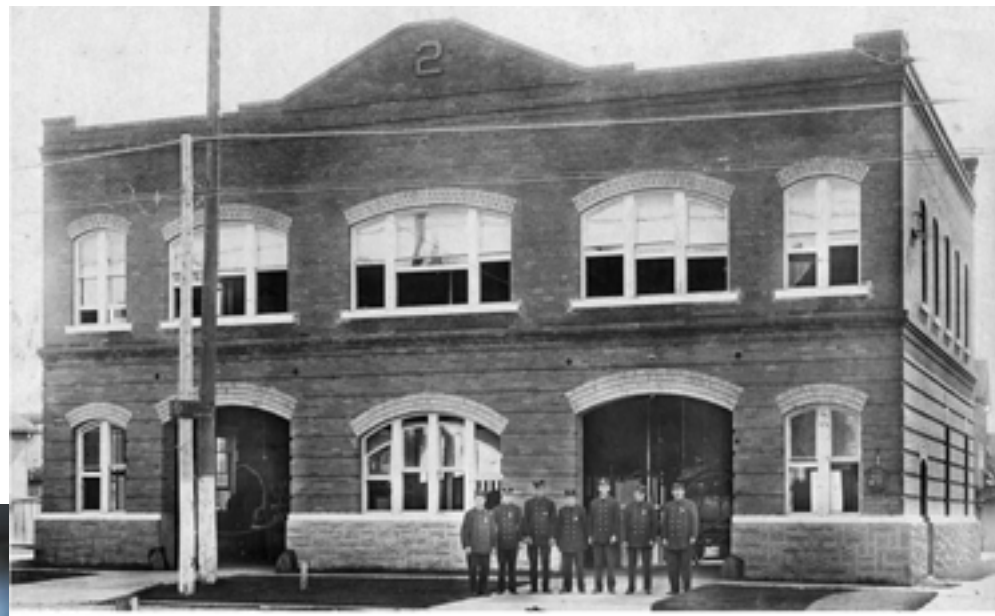
Uniquely East End Tours







Community



Zona Central





Weekly Farmers/Artists Market
Sundays, 10am-2pm
Navigation Esplanade



Evenings on the Esplanade







A person is holding a red brick in front of their face. The brick has the text "EAST END FOUNDATION BRICK CAMPAIGN" printed on it in black, bold, sans-serif capital letters. The person is wearing a dark-colored shirt and a watch on their left wrist. The background is a blurred outdoor setting with trees and a path.

**EAST END
FOUNDATION
BRICK CAMPAIGN**



EASTEND FOUNDATION

www.eastendfoundation.org

www.eastendhouston.com

Upcoming Events

Meetings

Next Revitalization Roundtable

October 2016

Date and Location TBD

For more information about Bringing Back Main Street, visit
www.h-gac.com/community/qualityplaces/workshops/bringing-back-main-street.aspx



Breakfast Sponsored by

