

Clean Waters Initiative: Stormwater Programs and Impaired Waters

**Collaboration Between Agencies that Assembled a Funding  
Method to Successfully Abandon Failing Septic Tanks in  
Underserved Communities**

Harris County Engineering Department

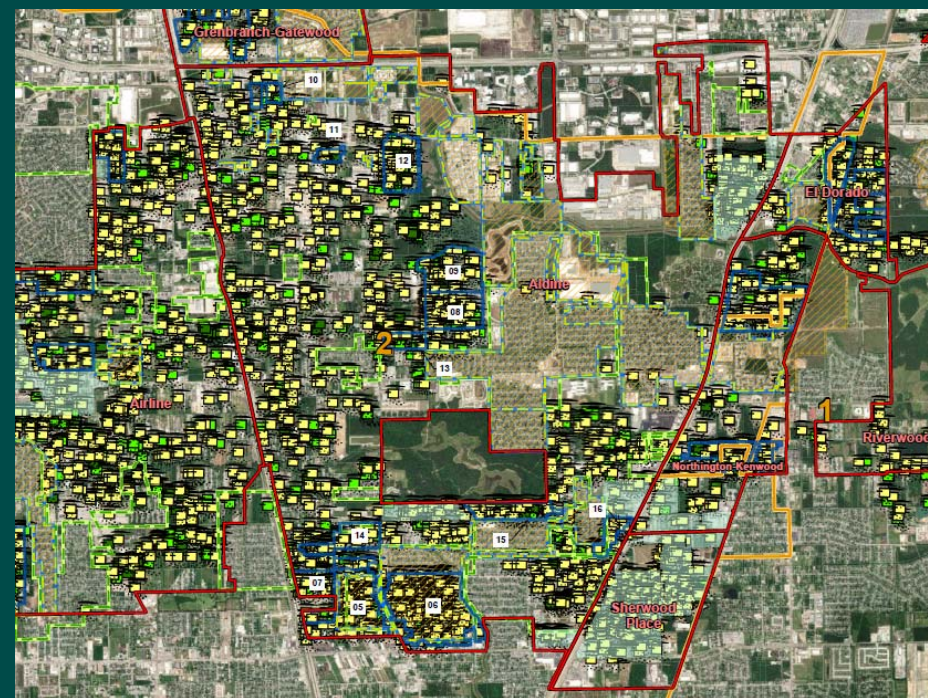
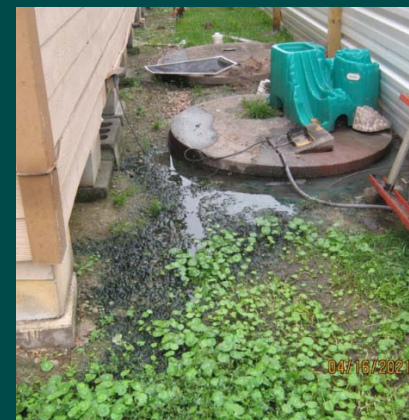
August 16, 2023

# AGENDA

- **Background** – What is the need?
- **Funding** – What are the funding options?
- **Partnerships** – What partnerships help facilitate projects?
- **Project Progress** – What constitutes Success?
- **Questions?**

## Background - What is the Need?

- Older, low-income neighborhoods on small lots with open channel drainage
- Residents are primarily served by shallow water wells and septic tanks
- Many septic tanks are failing and discharging raw sewage into the yards and the roadside ditches which flow into the bayous
- Shallow water wells become contaminated



# Funding – What are the funding options?



Bonds – East Aldine Management District (EAMD), Airline Improvement District (AID)

Texas Water Development Board's Economically Distressed Areas Program (TWDB EDAP)

Community Development Block Grants (CDBG) from the US Dept. of Housing and Urban Development (HUD)

American Rescue Plan Act (ARPA) Corona Virus Local Fiscal Recovery Funds (CLFRF)

# Partnerships – What partnerships help facilitate projects?

- **Bond-Funded Projects**

- EAMD/AID and a Utility Service Provider (COH, MUD)
- EAMD/AID and Harris County (for bidding and construction management)

- **TWDB EDAP-Funded Projects**

- EAMD/AID and TWDB
- EAMD/AID and a Utility Service Provider (COH, MUD)
- EAMD/AID and Harris County (for bidding and construction management)

## Partnerships – Continued

- **CDBG-Funded Projects**

- EAMD/AID/HC Pct and HC Community Services Department (or HUD directly)
- EAMD/AID and a Utility Service Provider (COH, MUD)
- EAMD/AID and Harris County (for leverage or bidding and construction management)
- EAMD/AID and COH (Inter-Agency agreement to expedite reviews)

- **ARPA-Funded Projects**

- Harris County and State of Texas
- Harris County and Utility Service Provider (COH, MUD)

# Partnership Between Harris County and EAMD/AID

The Harris County Technical Services Department assists EAMD and AID with the following:



Preparation and submission of funding applications



Acts as liaison between the Community Services Department and Districts



Works with consulting engineer during design and construction



Assists with Harris County project approvals and project bidding

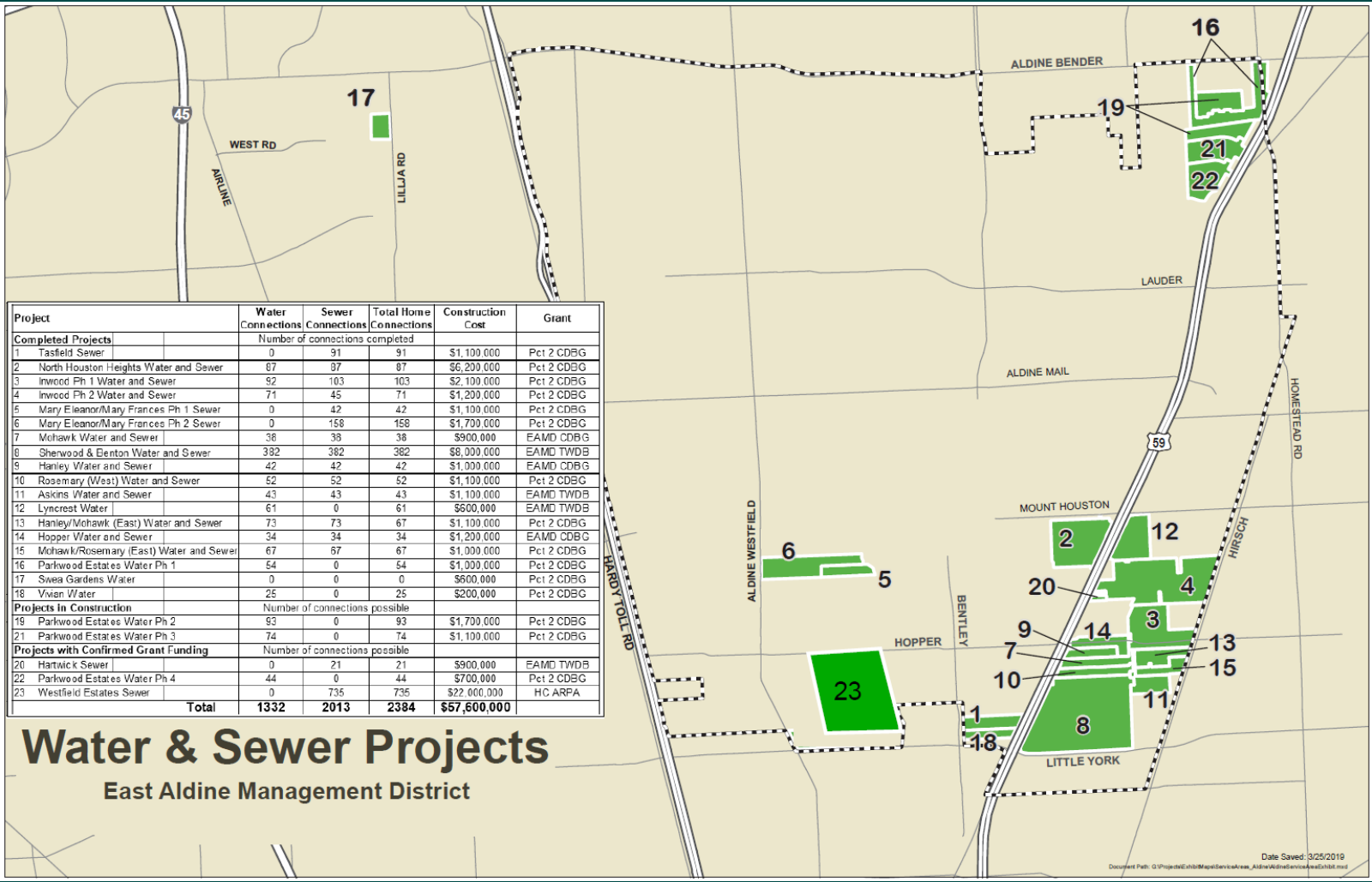


Provides construction management and inspection

# Project Progress – What constitutes Success?

- **East Aldine Management District**
  - **Water Connections to Date: 1,121**
  - **Sewer Connections to Date: 1,257**
- **Airline Improvement District**
  - **Water Connections to Date: 290**
  - **Sewer Connections to Date: 374**





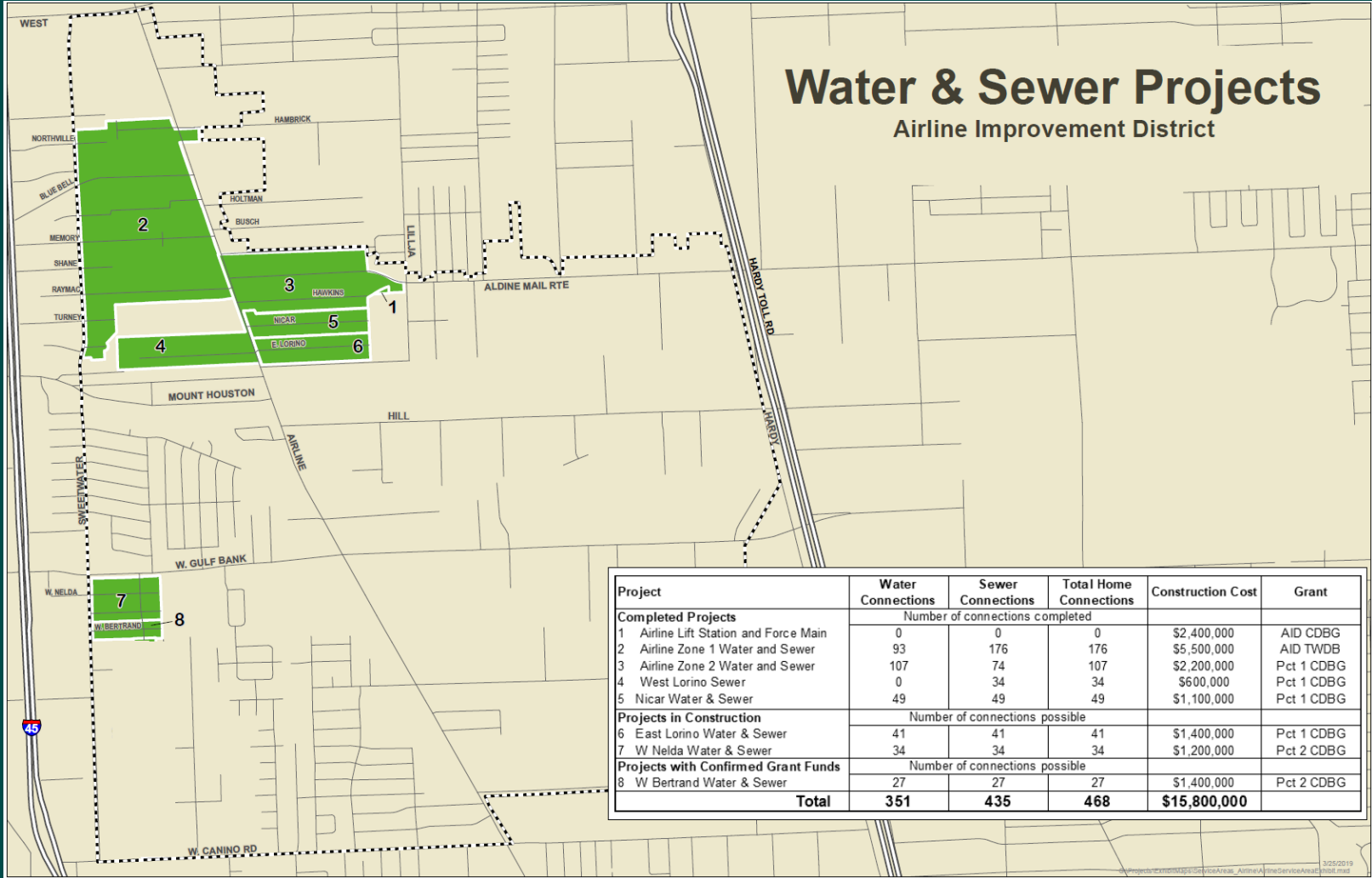
Project	Water Connections	Sewer Connections	Total Home Connections	Construction Cost	Grant
<b>Completed Projects</b>					
Number of connections completed					
1 Tasfield Sewer	0	91	91	\$1,100,000	Pct 2 CDBG
2 North Houston Heights Water and Sewer	87	97	87	\$6,200,000	Pct 2 CDBG
3 Inwood Ph 1 Water and Sewer	92	103	103	\$2,100,000	Pct 2 CDBG
4 Inwood Ph 2 Water and Sewer	71	45	71	\$1,200,000	Pct 2 CDBG
5 Mary Eleanor/Mary Frances Ph 1 Sewer	0	42	42	\$1,100,000	Pct 2 CDBG
6 Mary Eleanor/Mary Frances Ph 2 Sewer	0	158	158	\$1,700,000	Pct 2 CDBG
7 Mohawk Water and Sewer	38	38	38	\$900,000	EAMD CDBG
8 Sherwood & Denton Water and Sewer	382	382	382	\$8,000,000	EAMD TWDB
9 Hanley Water and Sewer	42	42	42	\$1,000,000	EAMD CDBG
10 Rosemary (West) Water and Sewer	52	52	52	\$1,100,000	Pct 2 CDBG
11 Askins Water and Sewer	43	43	43	\$1,100,000	EAMD TWDB
12 Lyncrest Water	61	0	61	\$600,000	EAMD TWDB
13 Hanley/Mohawk (East) Water and Sewer	73	73	67	\$1,100,000	Pct 2 CDBG
14 Hopper Water and Sewer	34	34	34	\$1,200,000	EAMD CDBG
15 Mohawk/Rosemary (East) Water and Sewer	67	67	67	\$1,000,000	Pct 2 CDBG
16 Parkwood Estates Water Ph 1	54	0	54	\$1,000,000	Pct 2 CDBG
17 Sween Gardens Water	0	0	0	\$600,000	Pct 2 CDBG
18 Vivian Water	25	0	25	\$200,000	Pct 2 CDBG
<b>Projects in Construction</b>					
Number of connections possible					
19 Parkwood Estates Water Ph 2	93	0	93	\$1,700,000	Pct 2 CDBG
21 Parkwood Estates Water Ph 3	74	0	74	\$1,100,000	Pct 2 CDBG
<b>Projects with Confirmed Grant Funding</b>					
Number of connections possible					
20 Hartwick Sewer	0	21	21	\$900,000	EAMD TWDB
22 Parkwood Estates Water Ph 4	44	0	44	\$700,000	Pct 2 CDBG
23 Westfield Estates Sewer	0	735	735	\$22,000,000	HC ARPA
<b>Total</b>	<b>1332</b>	<b>2013</b>	<b>2384</b>	<b>\$57,600,000</b>	

# Water & Sewer Projects

## East Aldine Management District

# Water & Sewer Projects

## Airline Improvement District



Project	Water Connections	Sewer Connections	Total Home Connections	Construction Cost	Grant
<b>Completed Projects</b>					
Number of connections completed					
1 Airline Lift Station and Force Main	0	0	0	\$2,400,000	AID CDBG
2 Airline Zone 1 Water and Sewer	93	176	176	\$5,500,000	AID TWDB
3 Airline Zone 2 Water and Sewer	107	74	107	\$2,200,000	Pct 1 CDBG
4 West Lorino Sewer	0	34	34	\$600,000	Pct 1 CDBG
5 Nicar Water & Sewer	49	49	49	\$1,100,000	Pct 1 CDBG
<b>Projects in Construction</b>					
Number of connections possible					
6 East Lorino Water & Sewer	41	41	41	\$1,400,000	Pct 1 CDBG
7 W Nelda Water & Sewer	34	34	34	\$1,200,000	Pct 2 CDBG
<b>Projects with Confirmed Grant Funds</b>					
Number of connections possible					
8 W Bertrand Water & Sewer	27	27	27	\$1,400,000	Pct 2 CDBG
<b>Total</b>	<b>351</b>	<b>435</b>	<b>468</b>	<b>\$15,800,000</b>	

**QUESTIONS?**