

Regional Transit Coordination Subcommittee Update April 14, 2011

Gulf Coast Region
Updated Regionally Coordinated
Transportation Plan



Presentation Overview

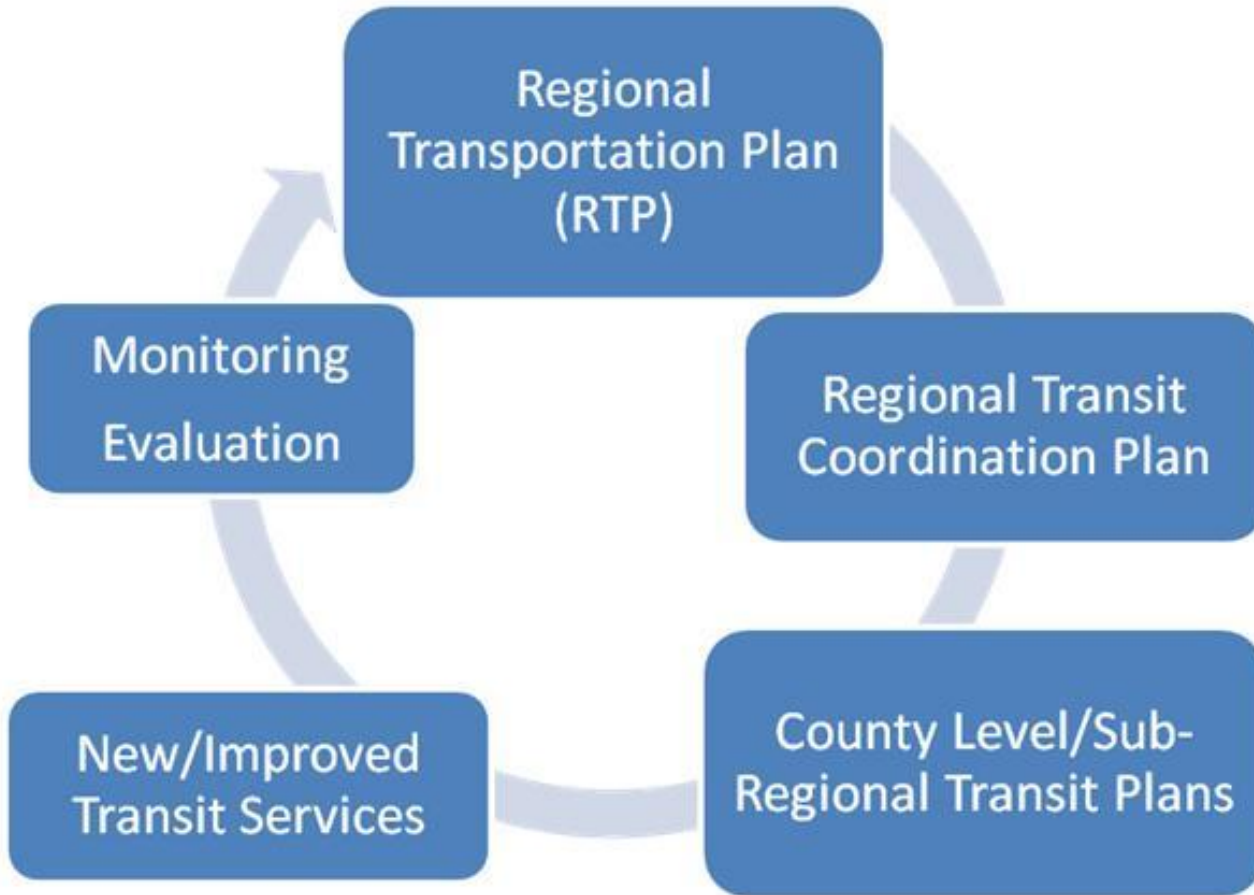
- **Major Components of the Update**
 - Progress 2006 Action Plan, Pilot Projects
 - Deficiencies, Needs, Gaps, Barriers
 - PT Vehicle Inventory Survey
- **Work in Progress**
 - AARA Summary
 - Regional Transit Travel Patterns
 - Non-Emergency Medical Trips
 - RTP 2040-Transit Element
- **Next Steps**
 - 2011 Action Plan (RTCS)
 - Public Involvement
 - Resource Sharing
 - Seamless Fare Policy

1. INTRODUCTION



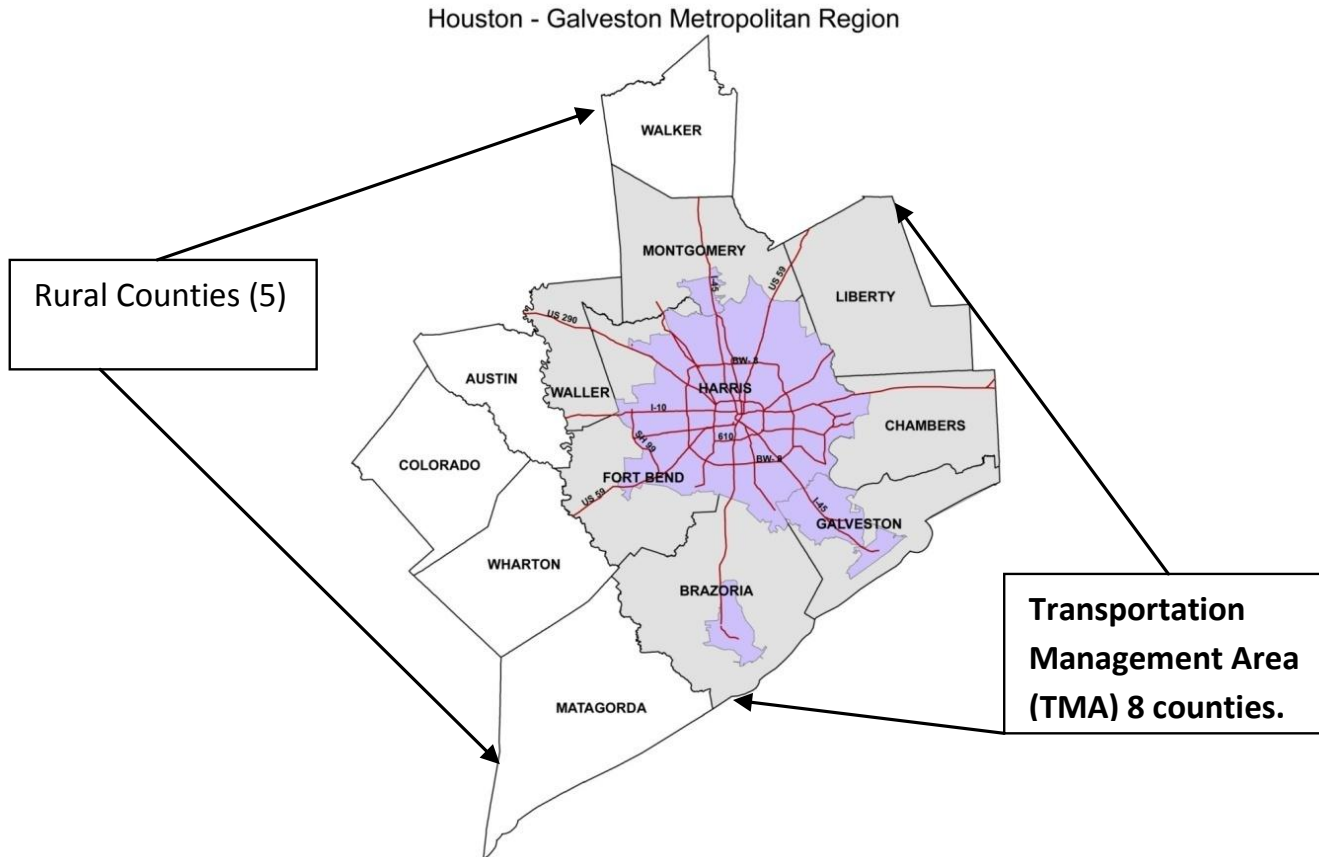
“I don’t get around. I can’t go anywhere. It’s stressful to be alone too much”--71 year old Montgomery County woman with multiple health challenges.

“It’s like living out in the wilderness. It’s in Houston but it’s in another world”--East Houston Woman over age 60. ¹



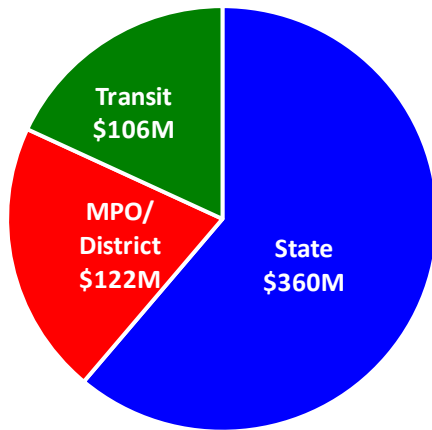
2. PLANNING FOR COMPREHENSIVE SERVICES

- a. Harris County, METRO Service Area+
- b. TMA (8 counties)
- c. HGB Region (13 counties)





Funded Projects
(Let/Awarded or Approved For Letting)



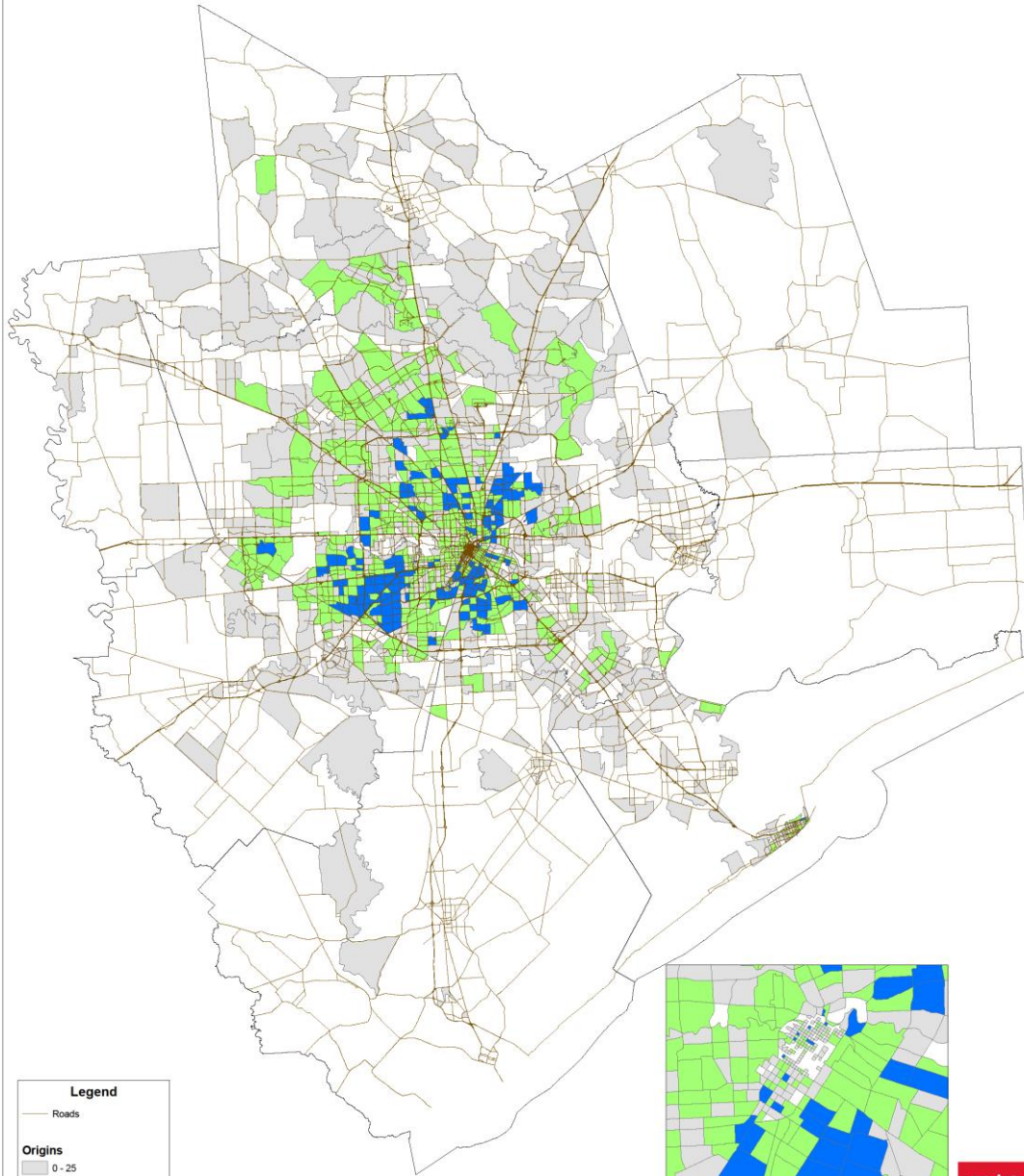
TRANSIT FUNDING (Millions of \$)	
	Grant Award
Transit Total	106.476
Houston Urbanized Area¹	93.210
Formula Funds	90.902
Fixed Guideway	2.309
Other Urbanized Areas	6.251
Galveston	1.575
Lake Jackson-Angleton	1.387
Texas City	1.609
The Woodlands	1.680
Nonurbanized (Rural)	7.015
The District (Brazos Transit District)	4.563
Fort Bend County	0.622
Gulf Coast Center	0.898
Colorado Valley Transit	0.932

1. Houston Urbanized Area Providers: METRO, Harris Co. Transit and Fort Bend Co. Transit

Regional Travel Patterns

- 2007 On Board Transit Survey
- Medical Transportation Program
- County to County Travel

Passenger Origins

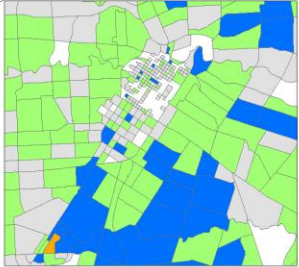


Legend

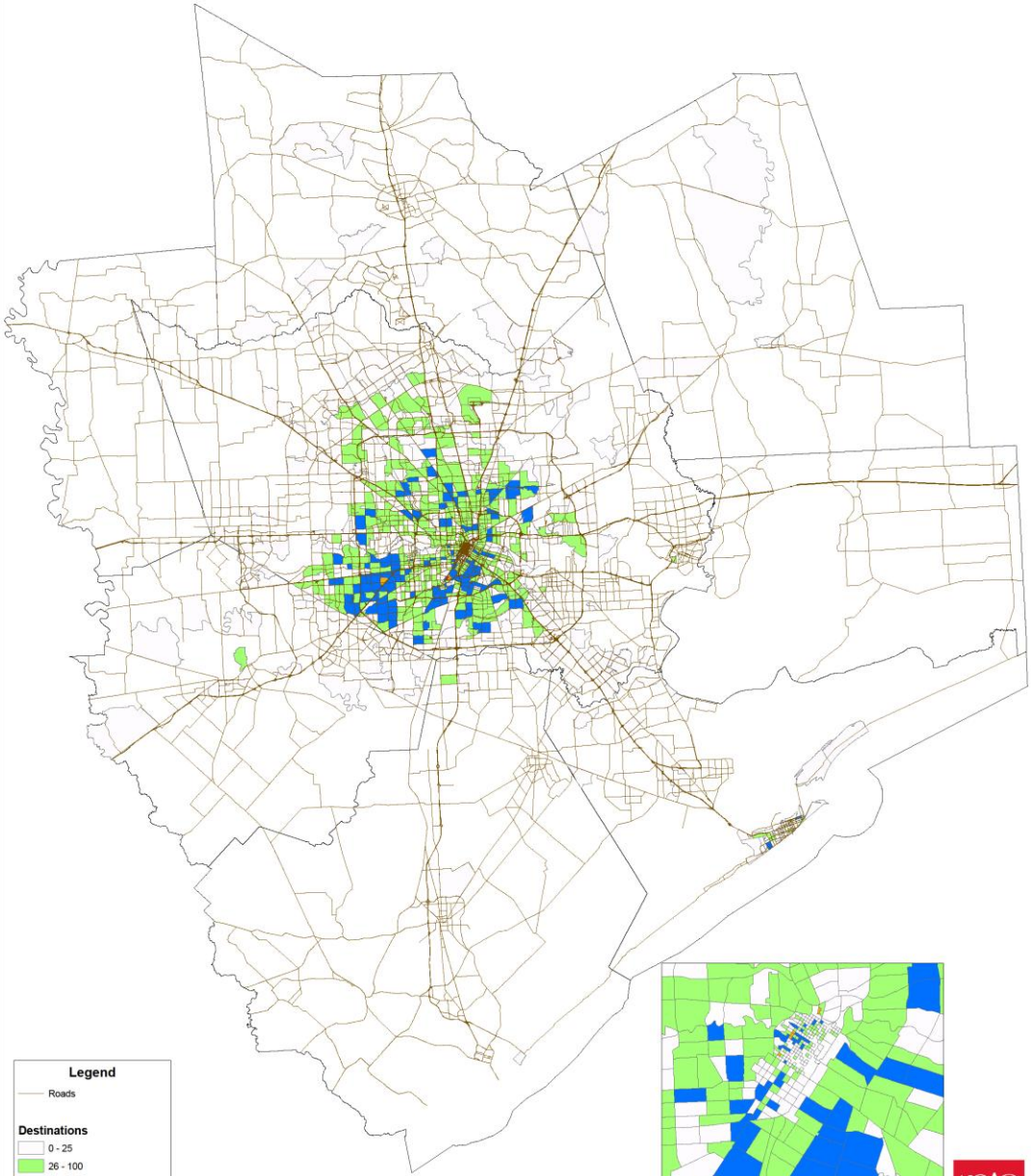
— Roads

Origins

- 0 - 25
- 26 - 100
- 101 - 500
- 501 - 1000



Passenger Destinations

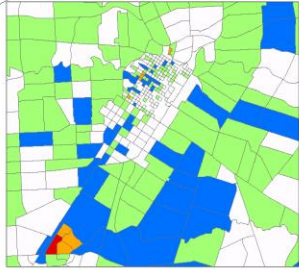


Legend

— Roads

Destinations

- 0 - 25
- 26 - 100
- 101 - 500
- 501 - 1000
- 1001 - 2500



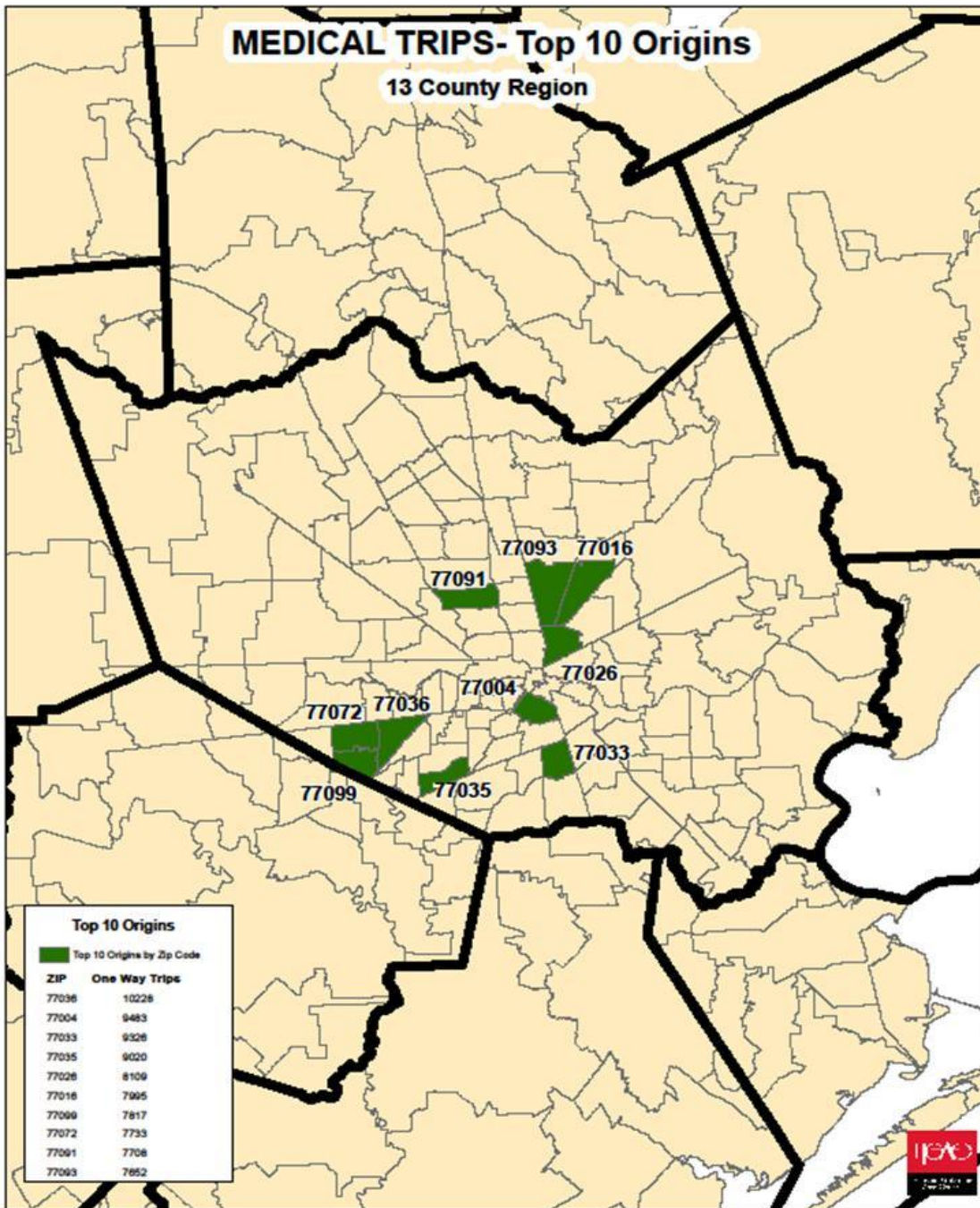
Medical Transportation Program

Fiscal Year	Trips	Costs	Cost/Trip
2007	490,492	\$ 18,507,973	\$ 37.73
2008	477,664	\$ 12,118,213	\$ 25.37

- Ridership 2000 daily trips, 13 county region,
- Medicaid (Non emergency Medical),
- Children with Special Health Care Needs (CSHCN),
- Transportation for Indigent Cancer Patients (TICP),
- Access to medical facilities coordinated with other providers.

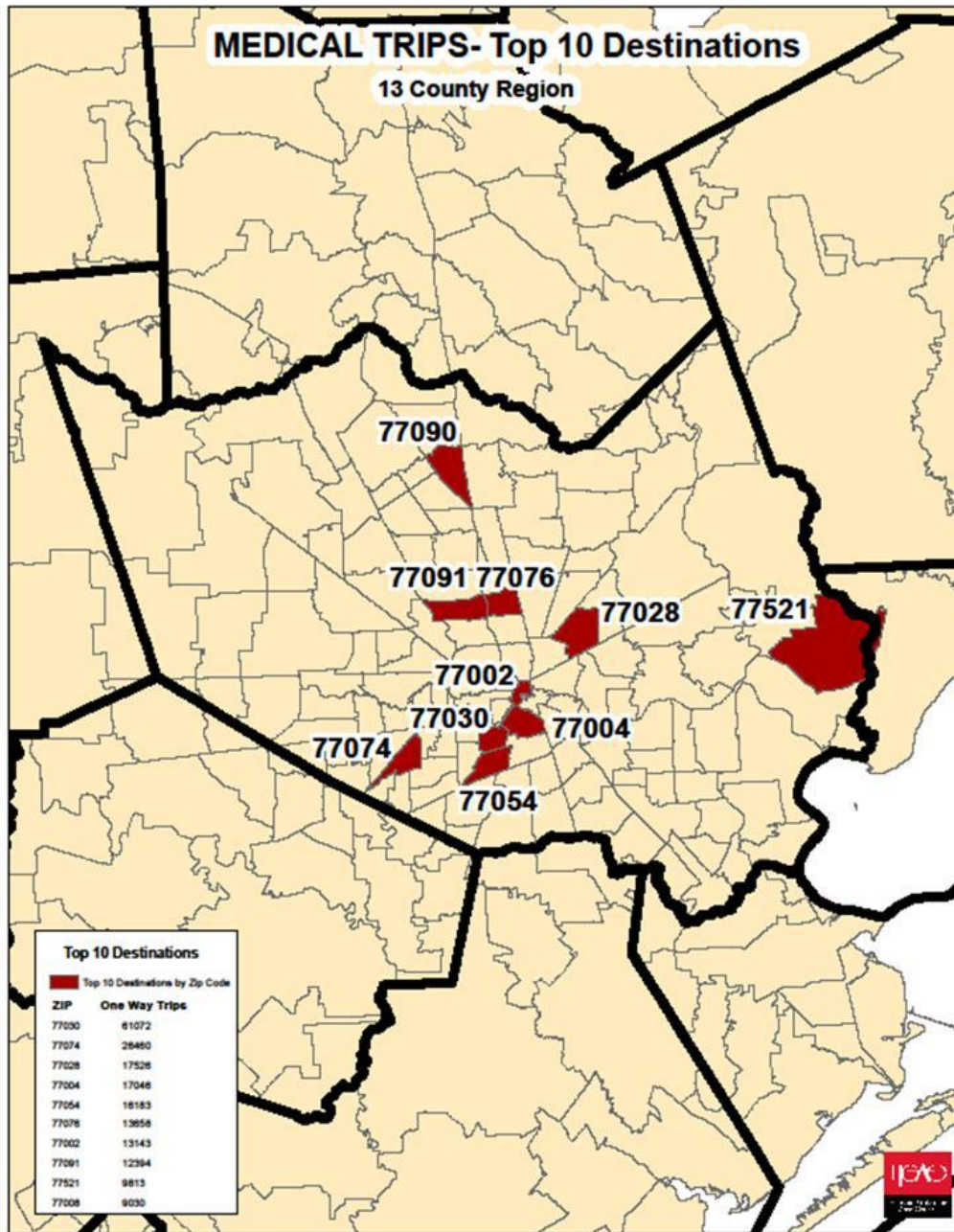
MEDICAL TRIPS- Top 10 Origins

13 County Region



MEDICAL TRIPS- Top 10 Destinations

13 County Region



Top 10 Destinations

Top 10 Destinations by Zip Code

ZIP	One Way Trips
77090	61072
77074	26460
77028	17526
77004	17046
77054	16183
77076	13658
77002	13143
77091	12394
77521	9813
77008	9030



Opportunities for Regional Transit Coordination?

- Medical Transportation Program
- Commuter Van Pools
- Access and Mobility
 - Outside METRO Service Area
 - Pockets inside METRO SA.
 - Seamless Fares
 - Resource Sharing
 - Elderly, disabled, Low/No income, Choice riders.

Next Steps 2011-2012

- Updated 2006 Coordination Action Plan,
 Prioritize Pilot Projects for regional coordination
- Analysis of Non-Emergency Medical Trips
- Transit Travel Pattern Analyses
- Regional Transit System Monitoring and
 Evaluation with TxDOT and Transit Providers.
- Updated PT Coordination plan due July 2011.
- 2040 RTP due October 2012.