

# February 2011

"A true measure of your worth includes all the benefits others have gained from your success."  
 --- Cullen Hightower



Monday	Tuesday	Wednesday	Thursday	Friday	Saturday	Sunday
	1 WACH-FINANCIAL EXPLOITATION (MONTGOMERY)	2 WACH-FINANCIAL EXPLOITATION (MATAGORDA) <b>Rescheduled</b>	3 WACH-DIABETES CARE-(WALKER) <b>Rescheduled</b>	4	5	6
7 WACH- UNDERSTANDING BENEFITS (LIBERTY)  MS- IDENTITY THEFT (BRAZORIA)	8	9 MS-HEALTHY LIVING (GALVESTON)	10 MS-IDENTITY THEFT (BRAZORIA)  WACH- DIABETES CARE	11 WACH-FINANCIAL EXPLOITATION (MATAGORDA)	12	13
14	15	16 MS- BROWN BAG (MATAGORDA)	17	18	19 CFHED-DIABETES EDUCATION (MATAGORDA)	20
21	22	23	24	25	26 CFHED-DIABETES EDUCATION (WALLER)	27
28						

**H-GAC AAA Educational Calendar**  
**Updates or Questions? [angela.bergaila@h-gac.com](mailto:angela.bergaila@h-gac.com)**

# March 2011

*“Try not to become a man of success but a man of value.”  
--- Albert Einstein*



Monday	Tuesday	Wednesday	Thursday	Friday	Saturday	Sunday
	1 <b>WACH</b> -DIABETES CARE (FT BEND)	2 <b>WACH</b> -FINANCIAL EXPLOITATION (GALVESTON)	3	4 <b>AA</b> -ALZHEIMERS CAREGIVER SOLUTIONS (LIBERTY)	5	6
7 <b>WACH</b> -DEMENTIA AWARENESS (MONTGOMERY)	8	9	10	11	12 <b>CFHED</b> -ALZHEIMER'S EDU (MATAGORDA)	13
14	15 <b>TSU</b> -RESOLVING FAMILY CONFLICT (CHAMBERS) <b>MS</b> - BROWN BAG (CHAMBERS)	16	17	18	19 <b>CFHED</b> -STROKE (MONTGOMERY)	20
21	22	23	24	25	26 <b>CFHED</b> -ALZHEIMER'S EDU (WALLER)	27
28	29	30	31			

**H-GAC AAA Educational Calendar**  
**Updates or Questions? [angela.bergaila@h-gac.com](mailto:angela.bergaila@h-gac.com)**

# April 2011

Kindness is more important than wisdom, and the recognition of this is the beginning of wisdom.  
- Theodore Isaac Rubin



Monday	Tuesday	Wednesday	Thursday	Friday	Saturday	Sunday
				1	2	3
4	5	6	7	8	9 <b>CFHED-</b> ALZHEIMER'S EDU (MONTGOMERY)	10
11	12	13	14	15	16 <b>AA-</b> ALZHEIMERS CAREGIVER SOLUTIONS (FT BEND) <b>CFHED-</b> ALZHEIMER EDU (WALKER)	17
18	19 <b>MS-</b> BROWN BAG (COLORADO)	20	21	22	23	24
25	26	27	28	29 <b>MS-</b> HEALTHY LIVING (AUSTIN/ WALLER)	30 <b>CHFED-</b> STROKE EDU (MATAGORDAY)	<b>TSU-</b> SAFE USE OF RX DRUGS (WHARTON/COLORADO)

**H-GAC AAA Educational Calendar**  
**Updates or Questions? [angela.bergaila@h-gac.com](mailto:angela.bergaila@h-gac.com)**

# May 2011

*You gain strength, courage, and confidence by every experience in which you really stop to look fear in the face. You must do the thing which you think you cannot do.*

*- Eleanor Roosevelt*

Monday	Tuesday	Wednesday	Thursday	Friday	Saturday	Sunday
						1
2	3	4	5	6	7	8
9	10	11	12	13	14 CFHED-STROKE EDU (COLORADO)	15
16	17 TSU-GRIEF & LOSS (GALVESTON) MS- DISASTER (FT BEND)	18	19	20	21	22
23	24	25	26	27	28	29
30	31					

**H-GAC AAA Educational Calendar**  
**Updates or Questions? [angela.bergaila@h-gac.com](mailto:angela.bergaila@h-gac.com)**

# June 2011

*Always bear in mind that your own resolution to succeed is more important than any one thing.*  
- Abraham Lincoln



Monday	Tuesday	Wednesday	Thursday	Friday	Saturday	Sunday
		1	2	3	4	5
6	7	8 <small>AA-ALZHEIMER'S CAREGIVER SOLUTIONS (GALVESTON)</small>	9	10	11	12
13	14	15 <small>MS-DISASTER (GALVESTON)</small>	16	17	18	19
20	21	22	23	24	25	26
27	28	29	30	TBA- <small>TSU-SAFE USE OF RX DRUGS (LIBERTY)</small>		

**H-GAC AAA Educational Calendar**  
**Updates or Questions? [angela.bergaila@h-gac.com](mailto:angela.bergaila@h-gac.com)**

# July 2011

*Faith consists in believing when it is beyond the power of reason to believe. It is not enough that a thing be possible for it to be believed.*  
- Voltaire

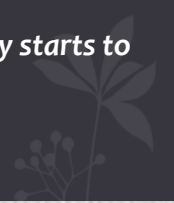
Monday	Tuesday	Wednesday	Thursday	Friday	Saturday	Sunday
				1	2	3
4	5	6	7	8	9	10
11	12 <b>MS-DISASTER</b> (AUSTIN/WALLER)	13	14	15	16	17
18	19 <b>TSU-GRIEF &amp; LOSS</b> (MATAGORDA)	20	21 <b>AA-ALZHEIMER</b> CAREGIVER SOLUTION (BRAZORIA)	22	23	24
25	26	27	28	29	30 <b>CFHED-</b> ALZHEIMER EDU (WHARTON)	31

**H-GAC AAA Educational Calendar**  
**Updates or Questions? [angela.bergaila@h-gac.com](mailto:angela.bergaila@h-gac.com)**

# August 2011

*Hope is like a bird that senses the dawn and carefully starts to sing while it is still dark.*

- Anonymous

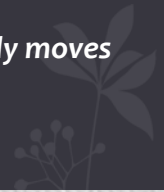


Monday	Tuesday	Wednesday	Thursday	Friday	Saturday	Sunday
1	2	3	4	5	6	7
8	9	10	11	12	13	14
15	16	17	18 MS- DISASTER (MATAGORDA)	19	20	21
22	23	24	25	26	27 CFHED- STROKE EDU (AUSTIN)	28
29	30	31				

**H-GAC AAA Educational Calendar**  
**Updates or Questions? [angela.bergaila@h-gac.com](mailto:angela.bergaila@h-gac.com)**

# September 2011

*True progress quietly and persistently moves  
along without notice  
- St. Francis of Assisi*



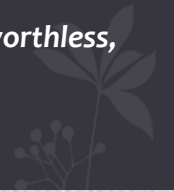
Monday	Tuesday	Wednesday	Thursday	Friday	Saturday	Sunday
			1	2	3	4
5	6	7	8	9	10	11
12	13	14 MS-DISASTER (COLORADO)	15	16	17	18
19	20 TSU-GRIEF & LOSS (BRAZORIA)	21	22	23	24	25
26	27	28	29	30		

**H-GAC AAA Educational Calendar**  
**Updates or Questions? [angela.bergaila@h-gac.com](mailto:angela.bergaila@h-gac.com)**

# October 2011

*Volunteers don't get paid, not because they're worthless,  
but because they're priceless.*

*- Sherry Anderson*

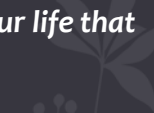


Monday	Tuesday	Wednesday	Thursday	Friday	Saturday	Sunday
					1	2
3	4	5	6	7	8	9
10	11	12	13	14	15	16
17	18	19	20	21	22	23
24	25	26	27	28	29	30
31						

**H-GAC AAA Educational Calendar**  
**Updates or Questions? [angela.bergaila@h-gac.com](mailto:angela.bergaila@h-gac.com)**

# November 2011

*And in the end it's not the years in your life that count. It's the life in your years.*  
- Abraham Lincoln



Monday	Tuesday	Wednesday	Thursday	Friday	Saturday	Sunday
	1	2	3	4	5	6
7	8	9	10	11	12	13
14	15	16	17	18	19	20
21	22	23	24	25	26	27
28	29	30				

**H-GAC AAA Educational Calendar**  
**Updates or Questions? [angela.bergaila@h-gac.com](mailto:angela.bergaila@h-gac.com)**

# December 2011

*The secret of health for both mind and body is not to mourn for the past, worry about the future, or anticipate troubles but to live in the present moment wisely and earnestly.*

*- Buddha*

Monday	Tuesday	Wednesday	Thursday	Friday	Saturday	Sunday
			1	2	3	4
5	6	7	8	9	10	11
12	13	14	15	16	17	18
19	20	21	22	23	24	25
26	27	28	29	30	31	

**H-GAC AAA Educational Calendar**  
**Updates or Questions? [angela.bergaila@h-gac.com](mailto:angela.bergaila@h-gac.com)**