

Fire at the Edge of Town

Chuck Wemple





Wildfire





Wildfire





Wildfire





Much at Stake



Texas News

Print Email Share

Wildfire spreads through suburban Houston neighborhoods



by JEFF McSHAN

KHOU

Posted on September 6, 2011 at 8:18 PM

Updated Wednesday, Sep 7 at 12:22 PM

GRIMES COUNTY, Texas — A mandatory evacuation order was issued for some homeowners in Grimes, Montgomery and Waller counties northwest of Houston Monday afternoon after a wildfire threatened

Related:

- Evacuees eager to return home after wildfires
- McKinney girl raises money for Central Texas fire victims



Awareness



HOUSTON-GALVESTON AREA
COUNCIL OF GOVERNMENTS

REGIONAL HAZARD MITIGATION PLAN
2011 UPDATE

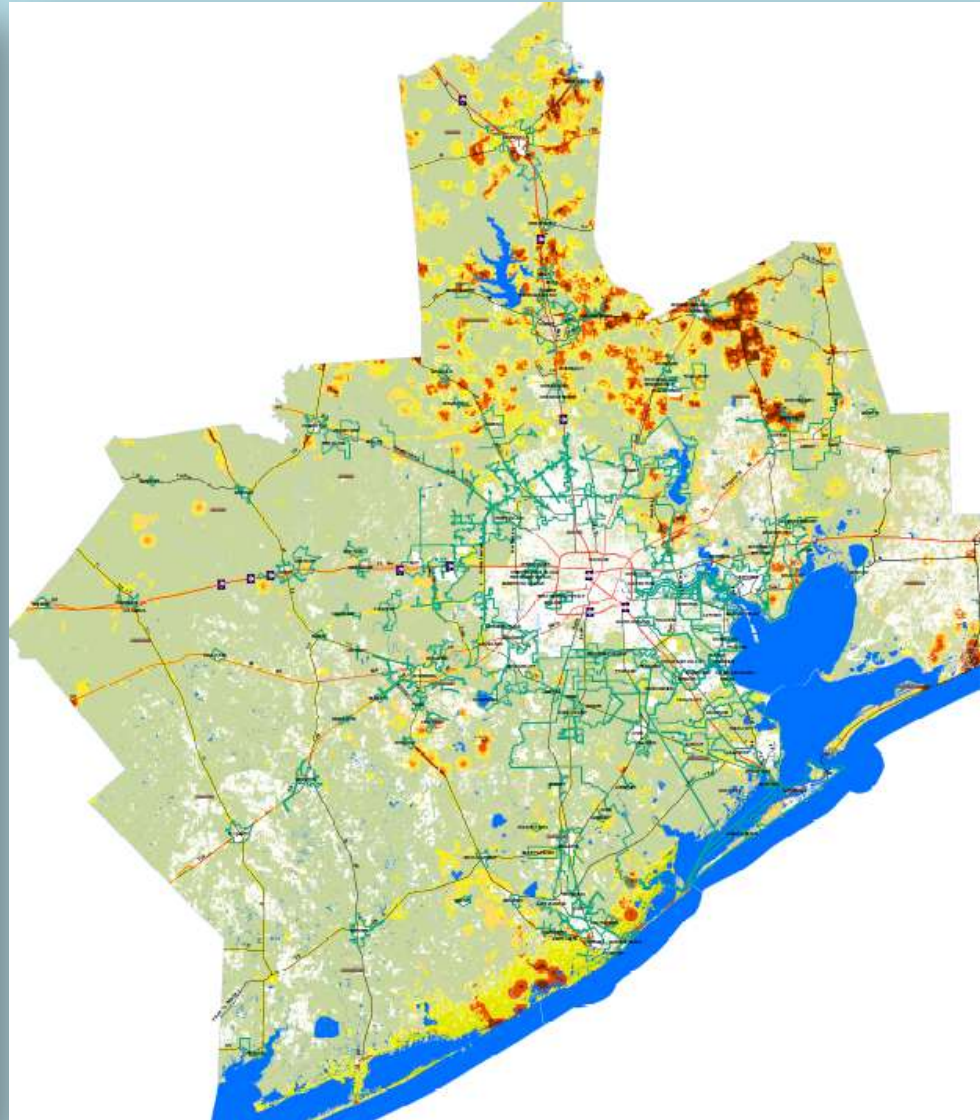
Prepared for:



Prepared by:



April 15, 2011





Awareness

Figure 4.3 - 23

Areas of Concern

AOI: Brazoria County Model Run Description: Brazoria County Communities at Risk

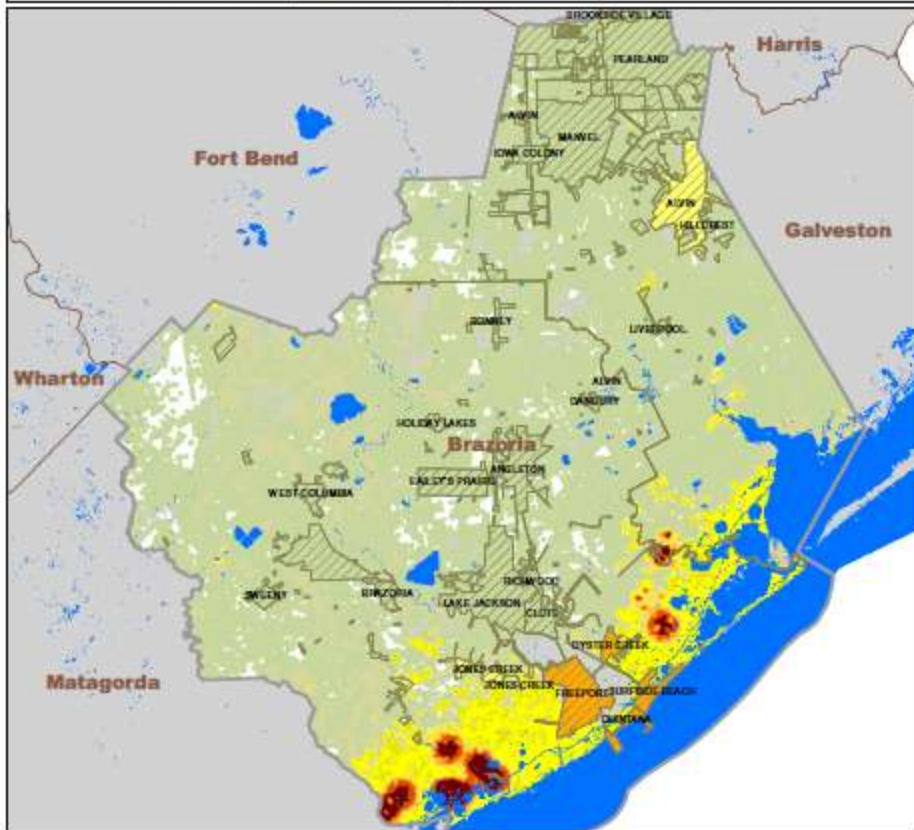
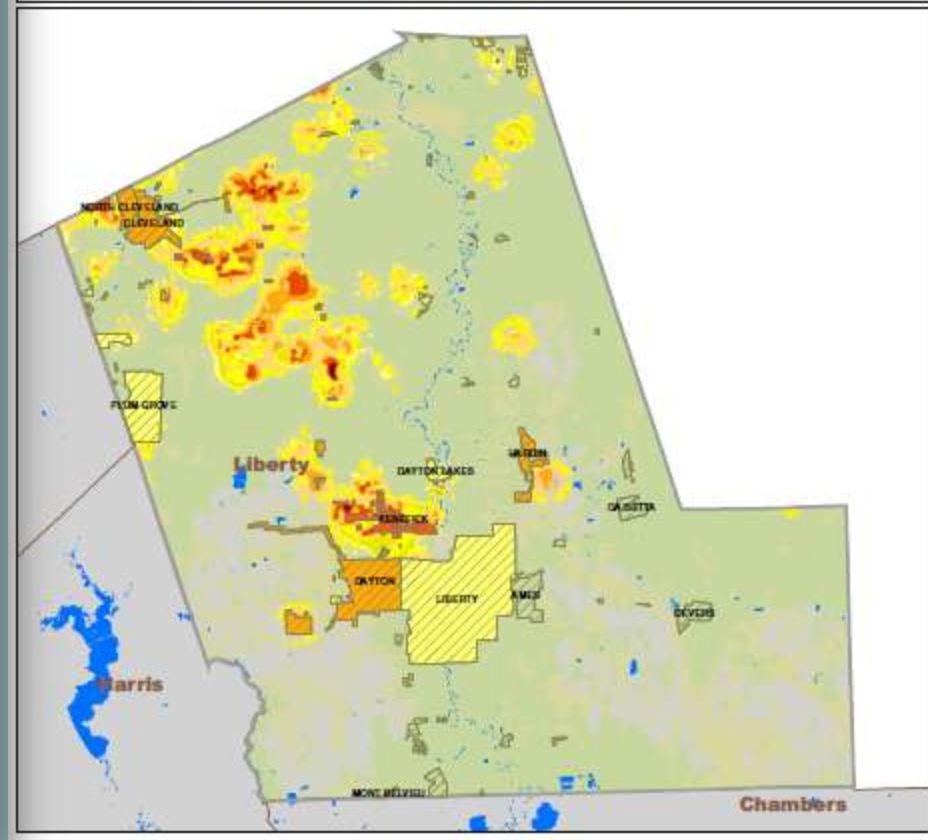


Figure 4.3 - 25

Areas of Concern

AOI: Liberty County Model Run Description: Liberty County Communities at Risk





Awareness

HOUSTON-GALVESTON AREA COUNCIL OF GOVERNMENTS

REGIONAL HAZARD MITIGATION PLAN 2011 UPDATE

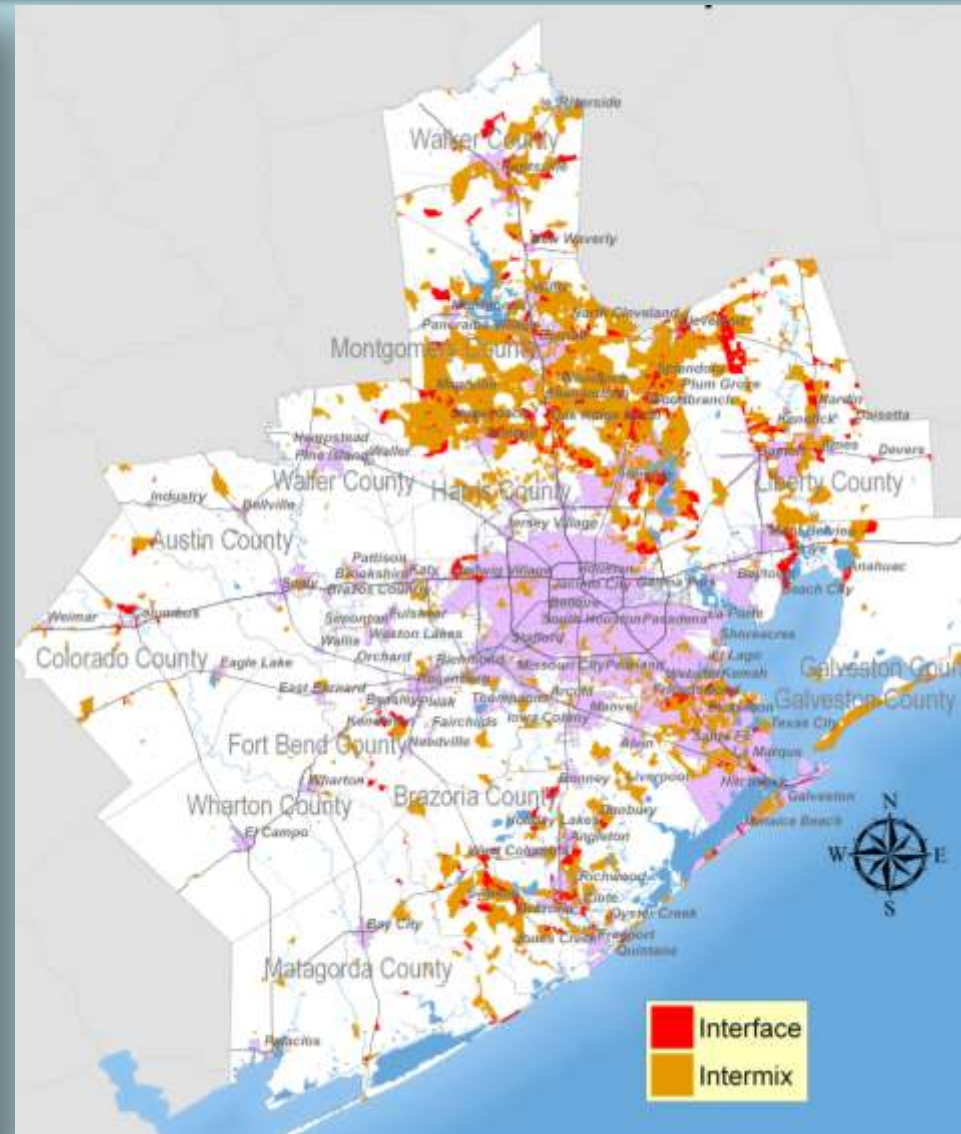
Prepared for:



Prepared by:



April 15, 2011



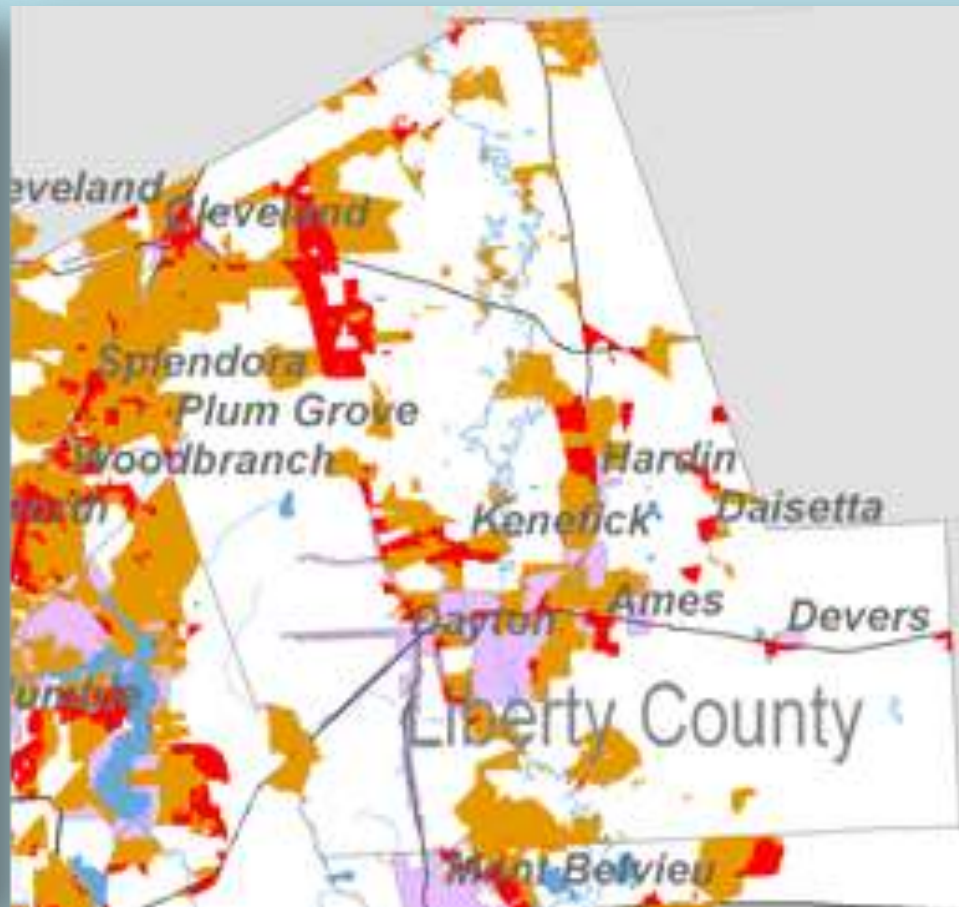
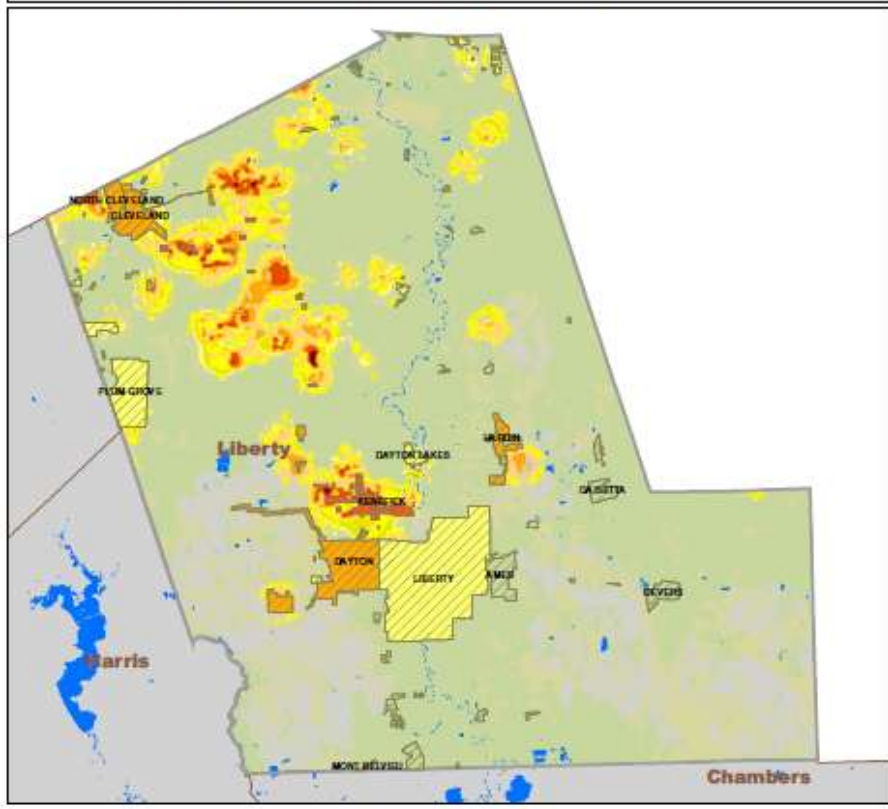


Awareness

Figure 4.3 - 25

Areas of Concern

AOI: Liberty County Model Run Description: Liberty County Communities at Risk



Mitigation & Protection



- Data Gathering
- Planning
- Training
- Education
- Action
 - Codes/Standards
 - Investment
 - Projects
- Response



Codes and Standards



National Fire Protection Association

The authority on fire, electrical, and building safety

- **Fire Protecting Infrastructure (rural and suburban)**
- **Water Supplies – Rural and Suburban Fire Fighting**
- **RV Parks and Campgrounds**
- **Disaster/Emergency Management**
- **Business Continuity**



Training & Investment





Projects





Projects





Resources





Iconic Outreach





Start Today

TEXAS FOREST SERVICE

Protecting and sustaining forests, trees and related natural resources

REPORT ARSON OR TIMBER THEFT
1-800-364-3470

- HOME
- ABOUT TFS
- NEWSROOM
- EMPLOYMENT
- CONTACT US
- LANDOWNERS
- SEARCH

\\

All Hazard Response

Publications

Site Map

TFS Photo Gallery

DIVISIONS

Director's Office

Finance & Administration

Fire & Emergency Response

Forest Resource Development and Sustainable Forestry

TOOLS

TFS News

Fire Department Reporting

Community Wildfire Protection Plan

Texas Interagency Coordination Center

Texas Regional Response Network

Ask the Experts

Fire Department Directory

FIRE & EMERGENCY RESPONSE

WILDLAND URBAN INTERFACE

Texas Community Wildfire Protection Plan

[[Printer Friendly](#) | [Back](#)]

Planning for wildfires must take place long before a community is threatened. Once a wildfire starts, the only option available to firefighters is to attempt to suppress the fire before it reaches a community. Texas Forest Service has developed a user-friendly set of guides and tools – the Community Wildfire Protection Plan (CWPP) – to aid communities that wish to reduce the risk wildfires pose to the homes, businesses and natural resources. A CWPP is unique in that it empowers communities to share the responsibility of determining the best strategies for protecting a community and allows communities to make informed choices to decrease the hazards around them.

To assist counties and communities in the development of these plans, the WUI team has developed the [CWPP Guide](#), [Handbook](#) and [Leaders Guide](#).

The CWPP Web Application

The Texas Forest Service [CWPP Web application](#) was created in an effort to provide communities with a tool that streamlines the development of a Community Wildfire Protection Plan. This site provides access to numerous resources that will ensure that the plan reflects the communities' wildfire protection needs, as well as meeting the requirements of the [Healthy Forest Restoration Act](#).

CWPP Status

To date, there are 94 completed CWPP's in the state of Texas. To view a listing of these CWPP's [click here](#).

You may also [click here](#) to view a map with the status of other county CWPP's.

[Texas Forest Service WUI Specialists](#) will serve as technical advisors to counties and communities wanting to develop a CWPP and will review plans to aid in development.

Questions?

Chuck Wemple

Manager, Economic Development Program

cwemple@h-gac.com

713-993-4514

