

Why Plan for Livability?



Houston-Galveston
Area Council

Jeff Taebel, FAICP

Director, Community & Environmental Planning

Why Livability?



- Manufacturing continues decline
- 65+ population will more than double in next 20 years
- Migration of well-educated young people

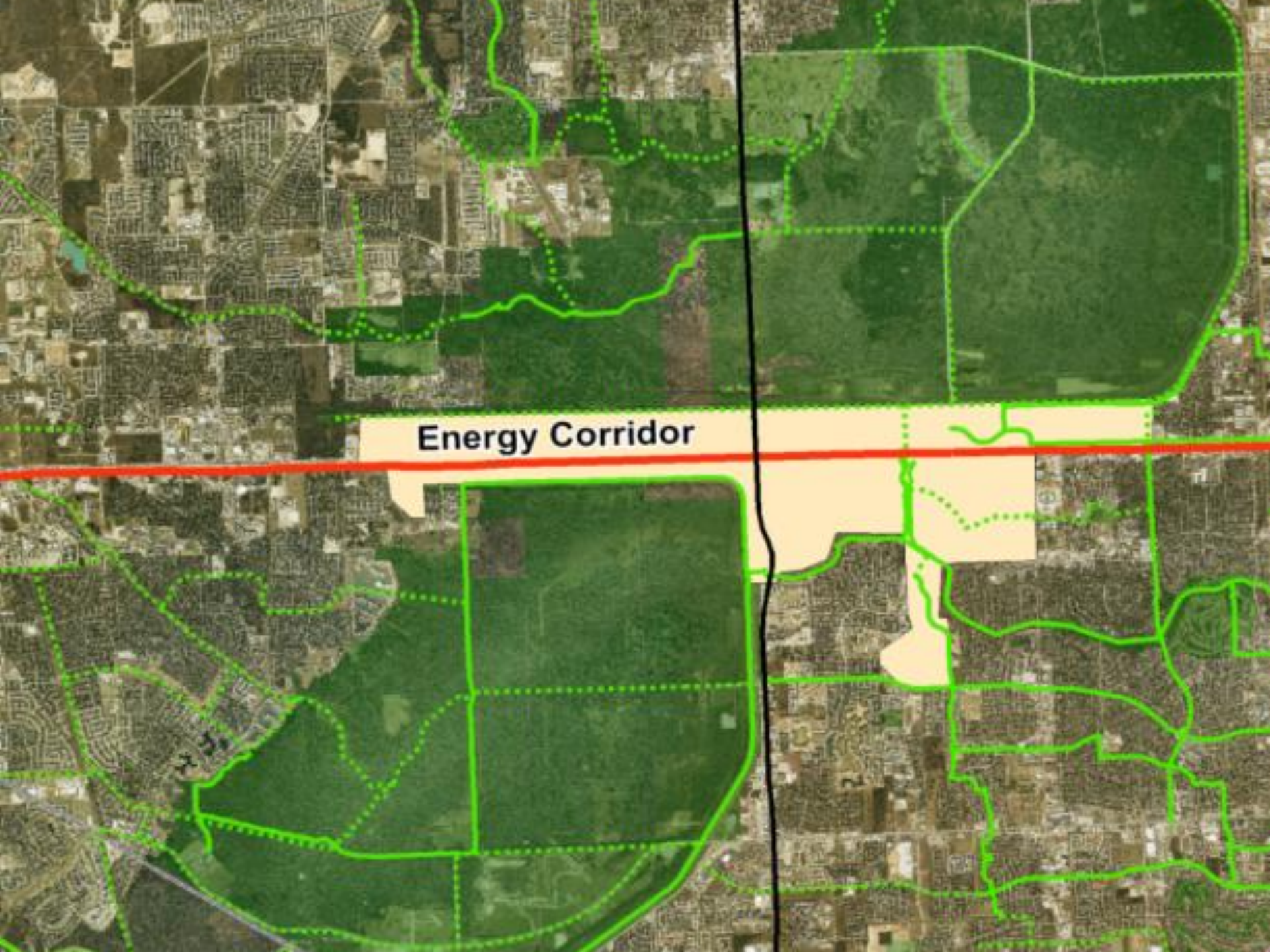


Place is “becoming the central organizing unit of our economy and society, taking on the role that used to be played by the large corporation.” Richard Florida, *Rise of the Creative Class*.

Livable Communities...



- have a green framework
- are walkable
- have great neighborhoods
- have significant gathering places
- are historic and cultural
- are scenic and fun
- enhance local flavor
- are healthy and safe



Energy Corridor























The Popsicle Index



“The Popsicle Index is a quality of life measurement coined by Catherine Austin Fitts as the percentage of people in a community who believe that a child in their community can safely leave their home, walk to the nearest possible location to buy a popsicle, and walk home.”



Jeff Taebel, FAICP
jeff.taebel@h-gac.com
713-993-4560