



Harris County
Public Health
Building a Healthy Community

Measuring Health Equity in Planning

Aimee Schultze, MPH, CHES®

Harris County Public Health

Built Environment Unit

November 1, 2019



Chronic Disease



Food Safety



Emergency Preparedness



Environmental Health



Infectious Diseases



Injury



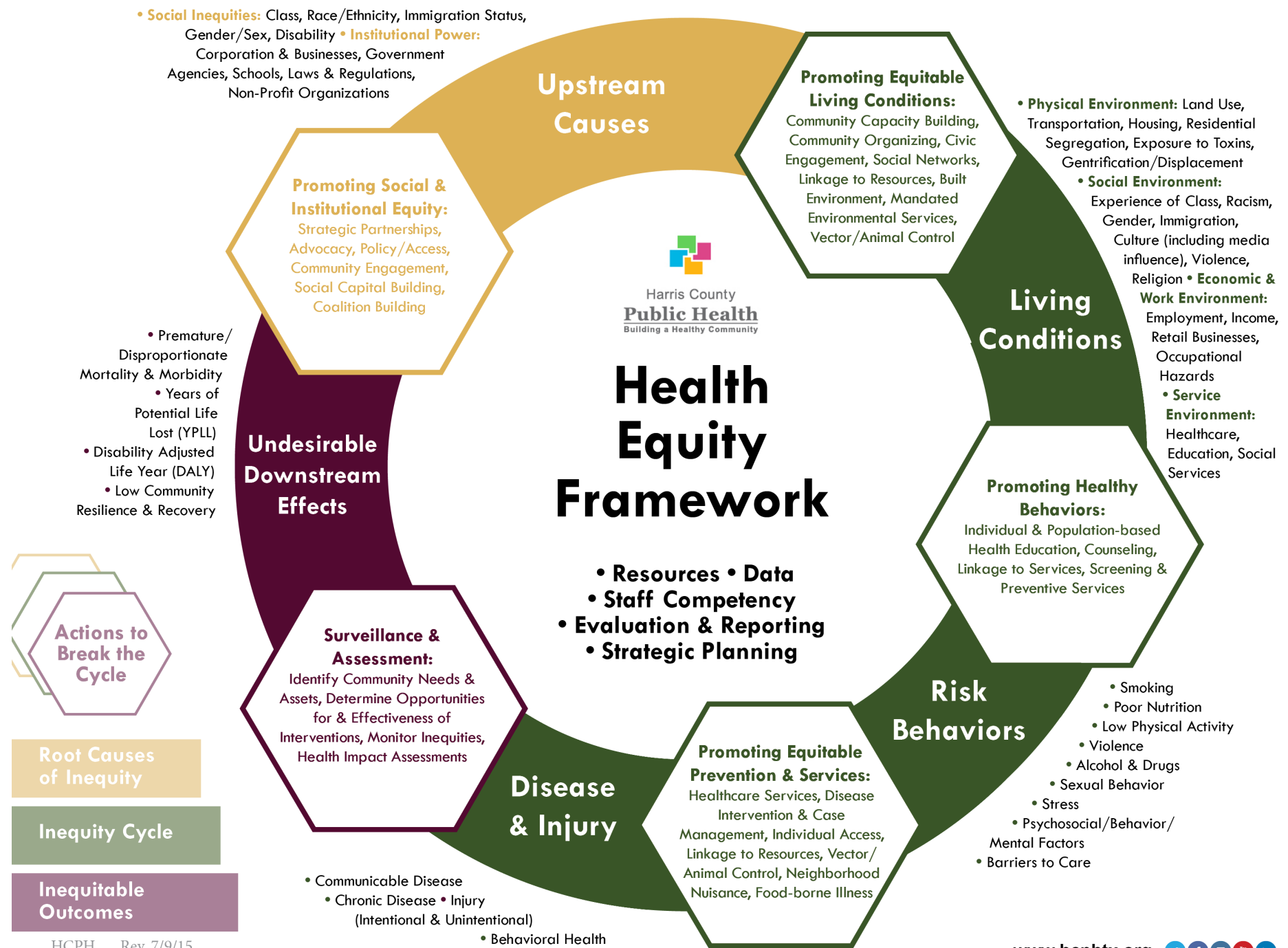
Social, Mental, and Emotional Wellbeing

OUR PREMISE: LLWWP

LLWWP: Health is a complex equation based on a number of inputs not limited to the clinic setting. Health takes place:

- Where people **Live**
- Where people **Learn**
- Where people **Work**
- Where people **Worship**
- Where people **Play**

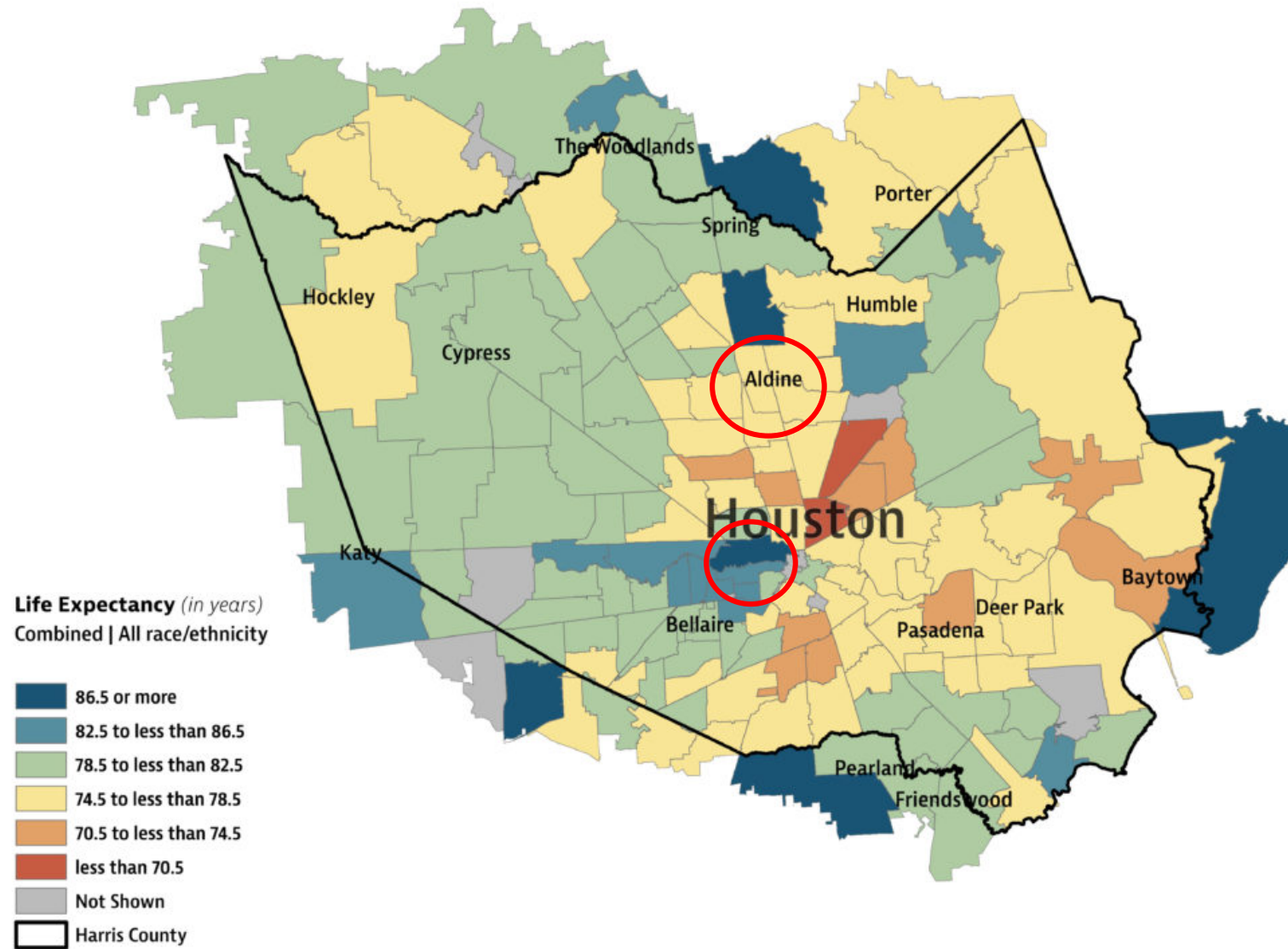




Health & The Built Environment

"It is unreasonable to expect that people will change their behavior easily when so many forces in the **social, cultural, and physical environment** conspire against such change." - Institute of Medicine





A Tale of an Unincorporated “City”: East Aldine Management District



Chronic
Disease



Food
Safety



Emergency
Preparedness



Environmental
Health



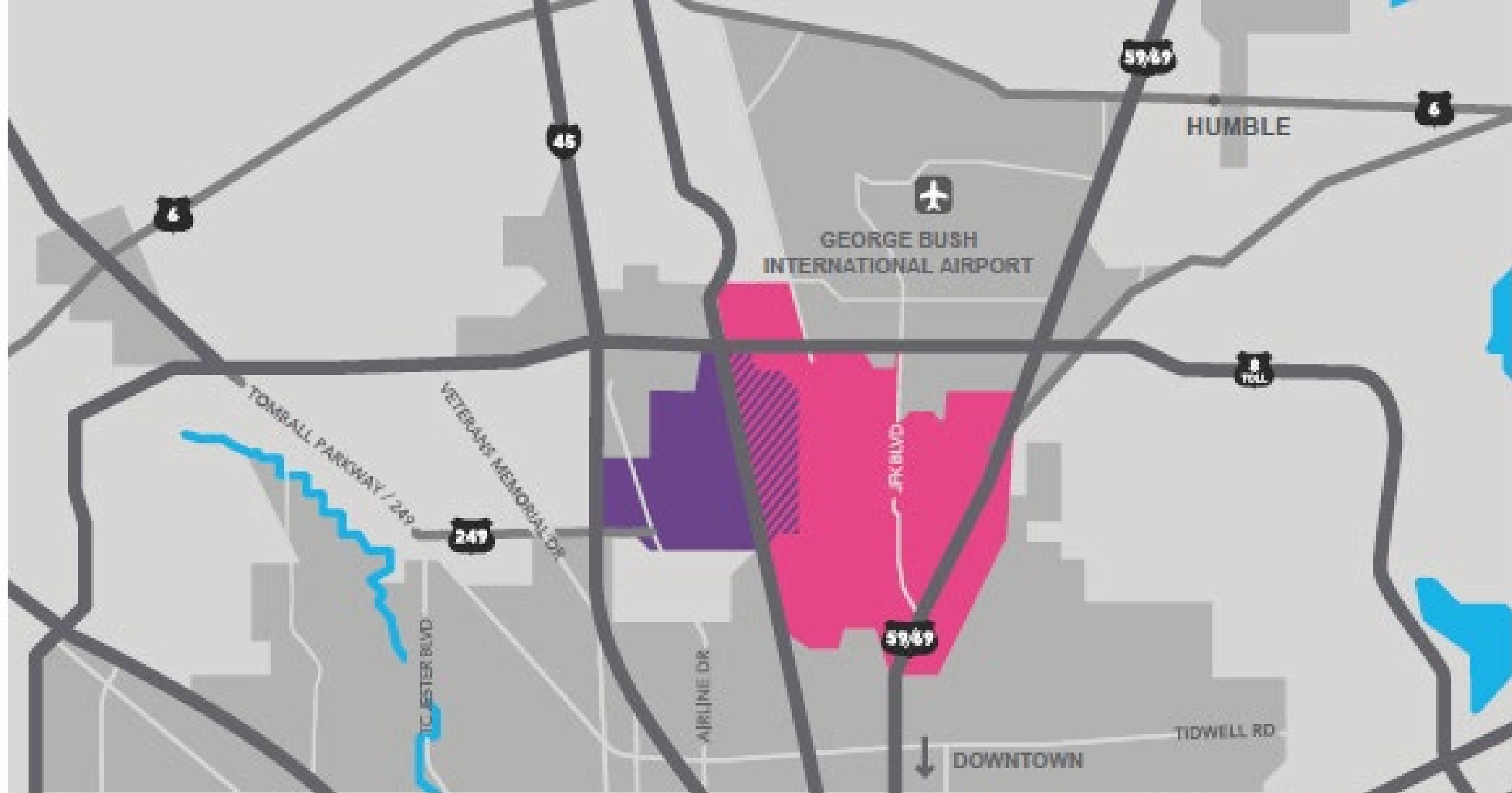
Infectious
Diseases



Injury



Social, Mental,
and Emotional
Wellbeing

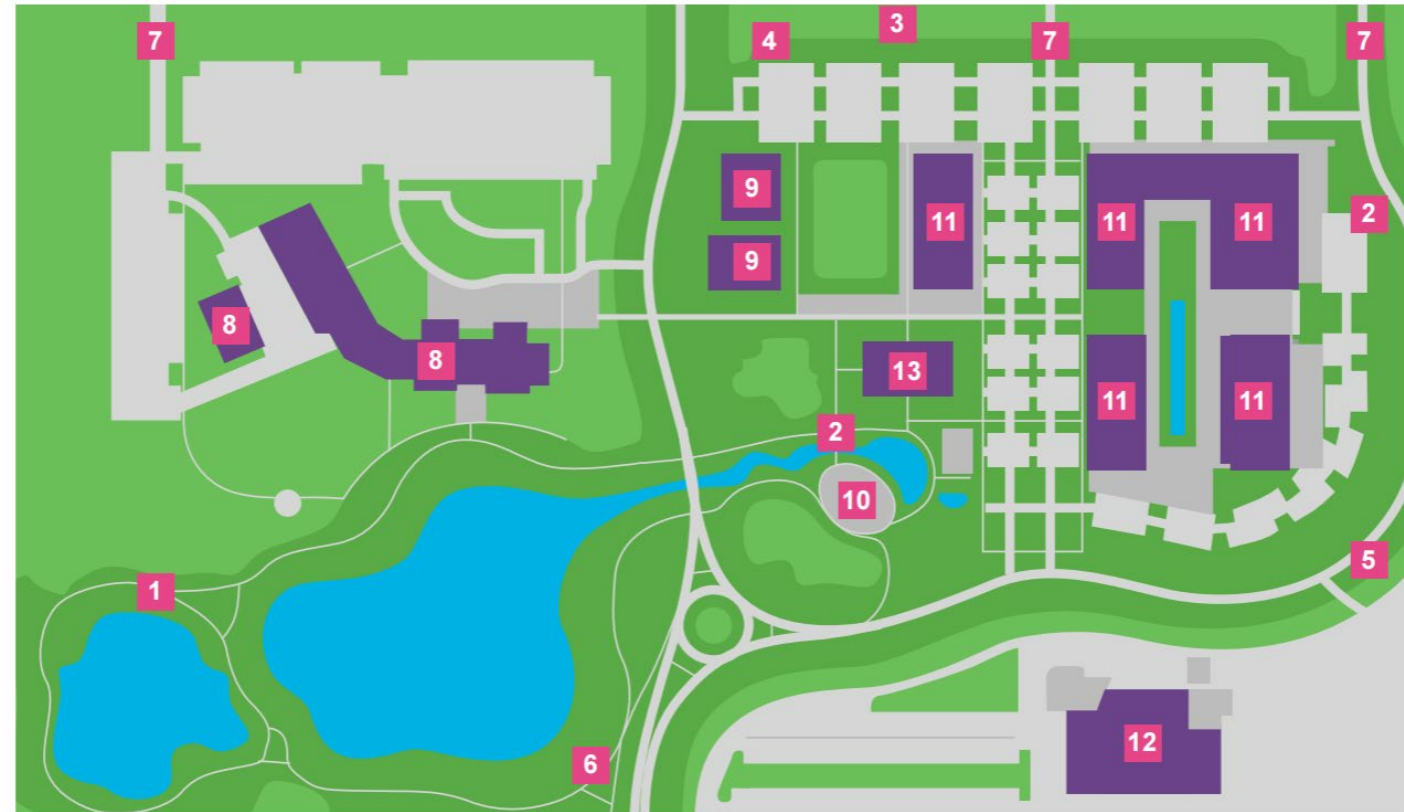


Legend:

- Harris County
- City of Houston
- Aldine
- East Aldine

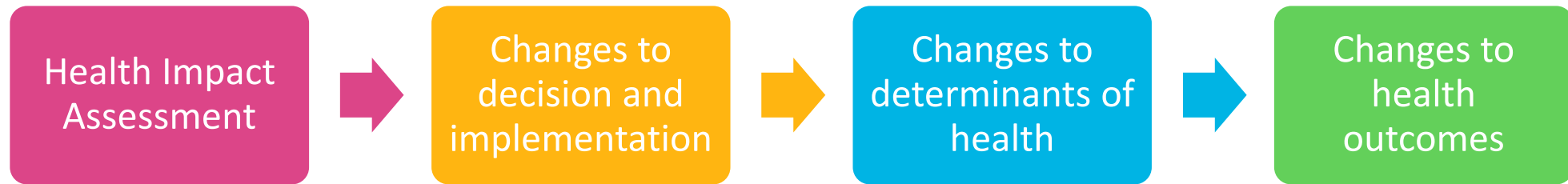
EAD Town Center Development

- **Proposed Decision:** develop a town center to stimulate economic growth and provide needed services and amenities for residents.



- | | | | |
|---------------------|-----------------------------------|------------------------------|----------------------------------|
| 1 Walking Trails | 5 Entrance from Fall Meadows Lane | 9 Neighborhood Centers, Inc. | 12 Harris County 911 Call Center |
| 2 Sidewalks | 6 Trail Connection South to Park | 10 Amphitheater | |
| 3 Left Turn Lane In | 7 Additional Entries | 11 Retail | 13 EAD Civic Center |
| 4 Main Entry | 8 Lone Star College | | |

What is a Health Impact Assessment (HIA)?



Community Engagement



FLOODING STRAY DOGS
WATER AND SEWER GANGS
BEHAVIORAL HEALTH TRAFFIC MENTAL HEALTH DOMESTIC VIOLENCE
LACK OF WALKABILITY LACK OF TRANSPORTATION
LACK OF PHYSICAL ACTIVITY HEALTHY FOOD CHOICES
PEDESTRIAN INFRASTRUCTURE
ACCESS TO HEALTHCARE
AIR QUALITY OBESITY CHRONIC DISEASE
CRIME DRUGS STREET LIGHTING



FLOODING
WATER AND SEWER
TRAFFIC

LACK OF WALKABILITY **LACK OF TRANSPORTATION**
HEALTHY FOOD CHOICES
PEDESTRIAN INFRASTRUCTURE

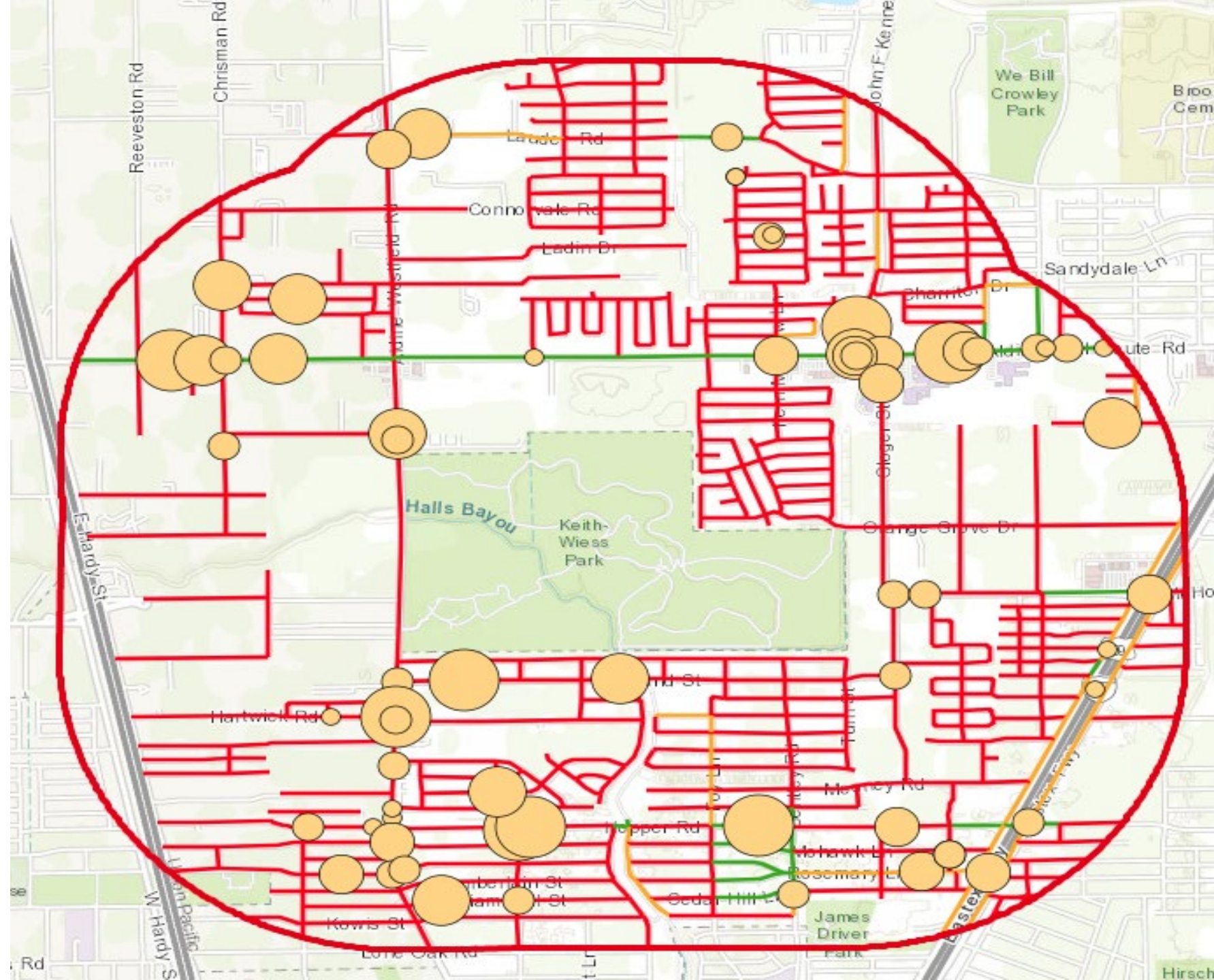
STREET LIGHTING



Sidewalk Presence and Crash Data

- No sidewalk
- Sidewalk on one side
- Sidewalk on both sides

- Weight
- Fatality
 - Incapacitating Injury
 - Non-Incapacitating Injury
 - Possible Injury
 - Not Injured/Unknown











Measuring health equity in planning

What quality opportunities currently exist for an individual or community to be healthy?

How much power was shared between impacted communities and planners/decision makers?



Chronic Disease



Food Safety



Emergency Preparedness



Environmental Health



Infectious Diseases



Injury



Social, Mental, and Emotional Wellbeing