



Houston-Galveston Area Council

Planning For Livability  
Workshop  
November 13, 2009





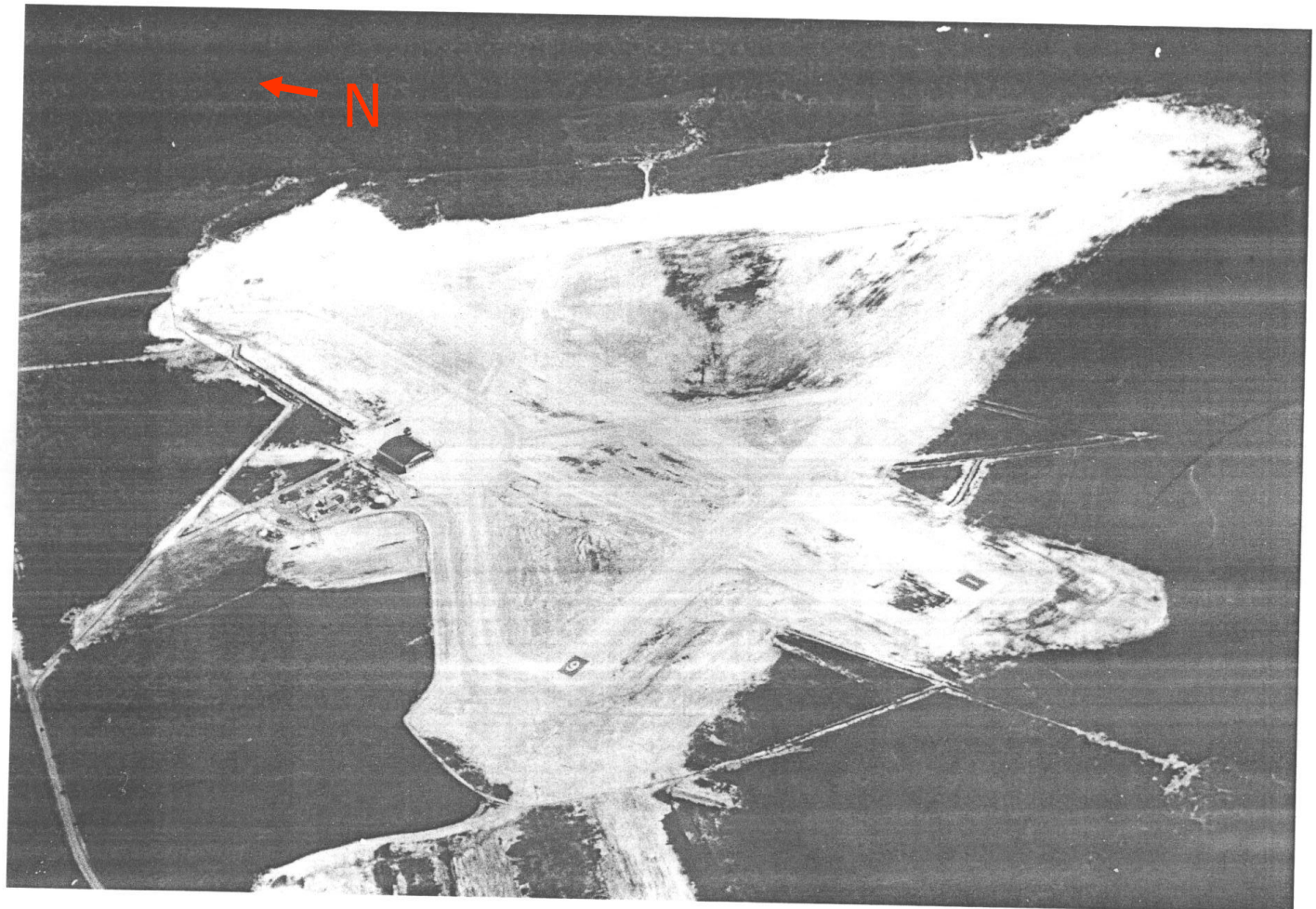
# Lone Star Executive Airport

## **History**

- 1939 - three runways built by the Civil Aviation Authority (CAA) for \$1.425M
- 1943 - leased to the Navy for pilot training, weather station, drone testing
- Lease surrendered back to County for civilian use in 1949 - with emergency provision
- Emergency provision canceled in 1962

# Airport History

## The Airport in 1940s



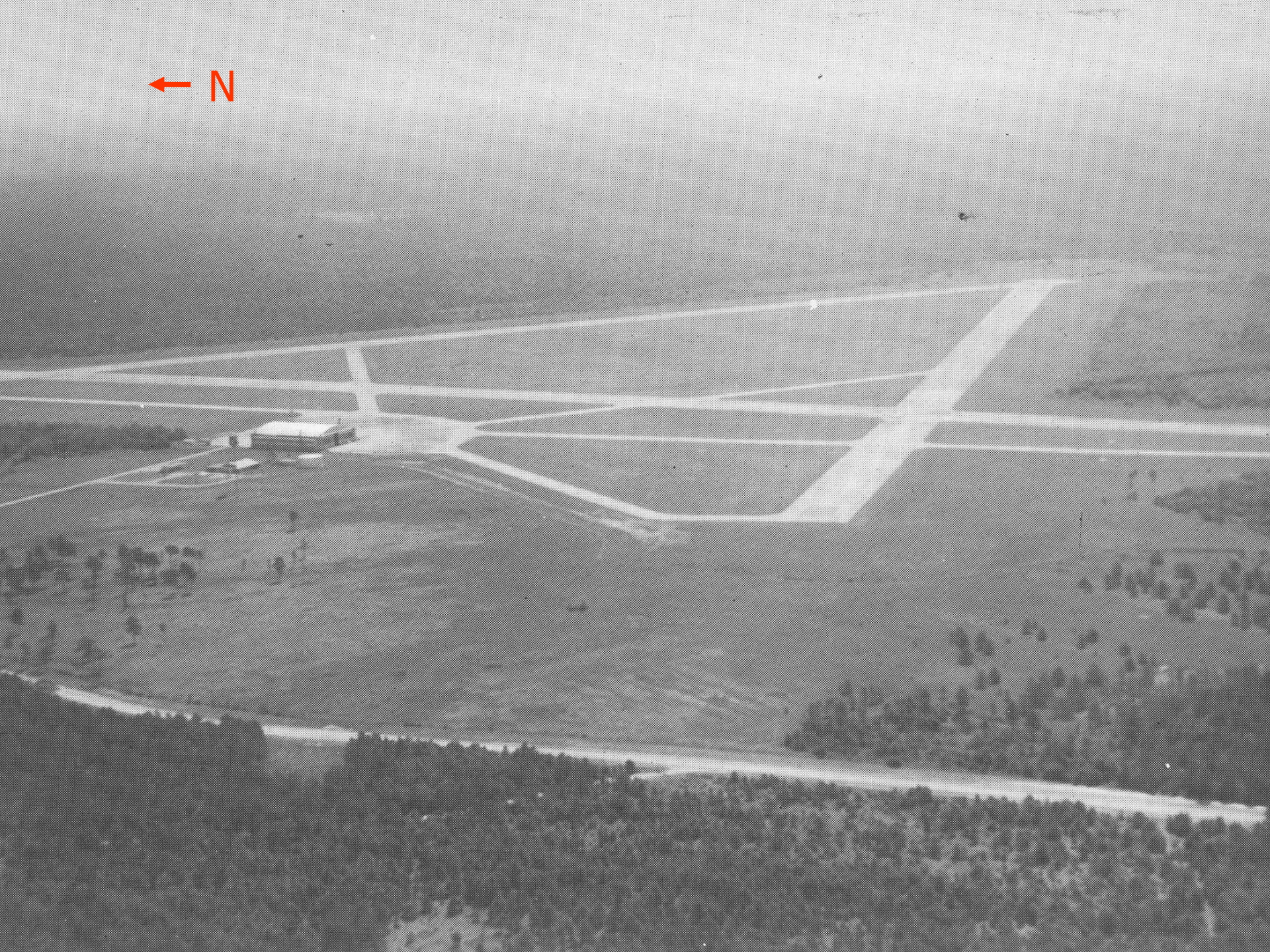




The Airport in 1940s



← N

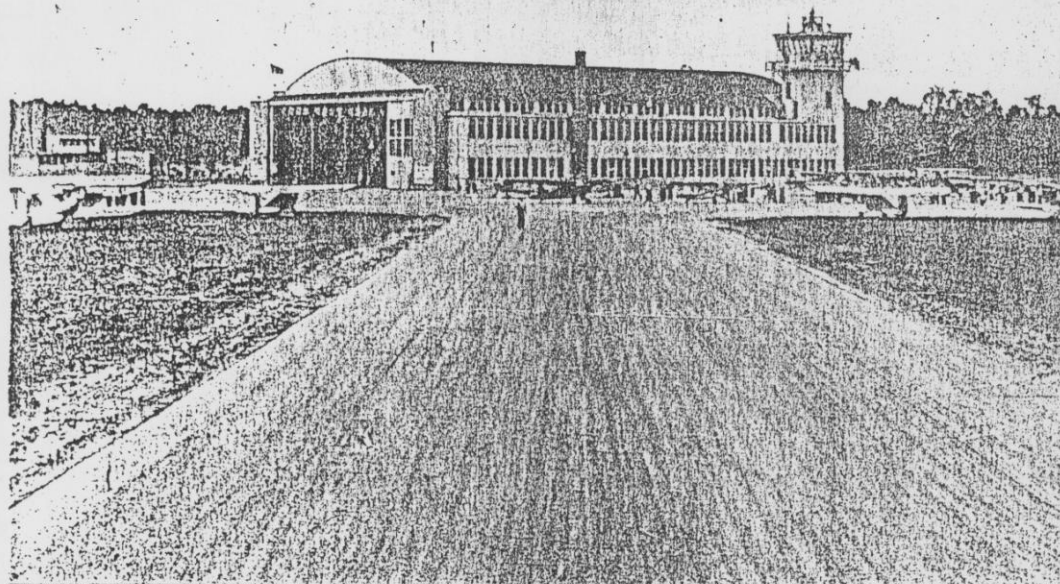




# MODERN Airports

VOL. V, NO. 4

MODERN AIRPORTS MAGAZINE  
1940



Montgomery County Airport, located three miles northeast of Conroe, Texas, has three 4,600 ft. hard-surfaced runways and fifty-foot hard-surfaced taxi-ways. Built at an estimated cost of \$1,500,000, the 4,300-acre airport was recently released by the Navy to a county commissioner's court. The field has a \$52,000 lighting system and complete shop facilities are housed in the 125x210 ft. hangar. (See page 47.)

## IN THIS NUMBER

### THE PUBLIC vs. AIRPORTS

by John H. Frederick

40

### AIRPORTS MUST BEHAVE

by H. A. Shashkin

41

### MAINTENANCE OF AIRPORT FUELING

SYSTEMS—by Rudolph H. Tolson

43

### THIS MONTH'S MODERN AIRPORT—

CONROE, TEXAS

47











# Airport Information

- Reliever Airport
- Over 200 based aircraft, 193 hangars
- 2 Runways: 5,000' and 6,000 length
- 85,000 Annual Takeoffs/Landings
- 24 businesses, EMS Helicopters, and U.S. Army Reserve Battalion – Apache Helicopters
- Instrument Landing System (ILS)
- Automated Weather Information (NWS)



# Lone Star Executive Airport Economic Impact

- \$444K annual operating budget
- 700 jobs supported direct and indirect
- \$22.8M total payroll
- \$65.3M total economic activity
- Tax revenue for the local economy

Source: Wilbur Smith Associates and TxDot Aviation



# Airport Master Plan

- Began in Spring of 2002
- Goal: Identify needs of airport based on projected demand and growth
- Development of Improvement Plan
- Plan Is Demand Based or Need Based
- Short / Intermediate / Long Term
- Revisit Every 5-8 Years

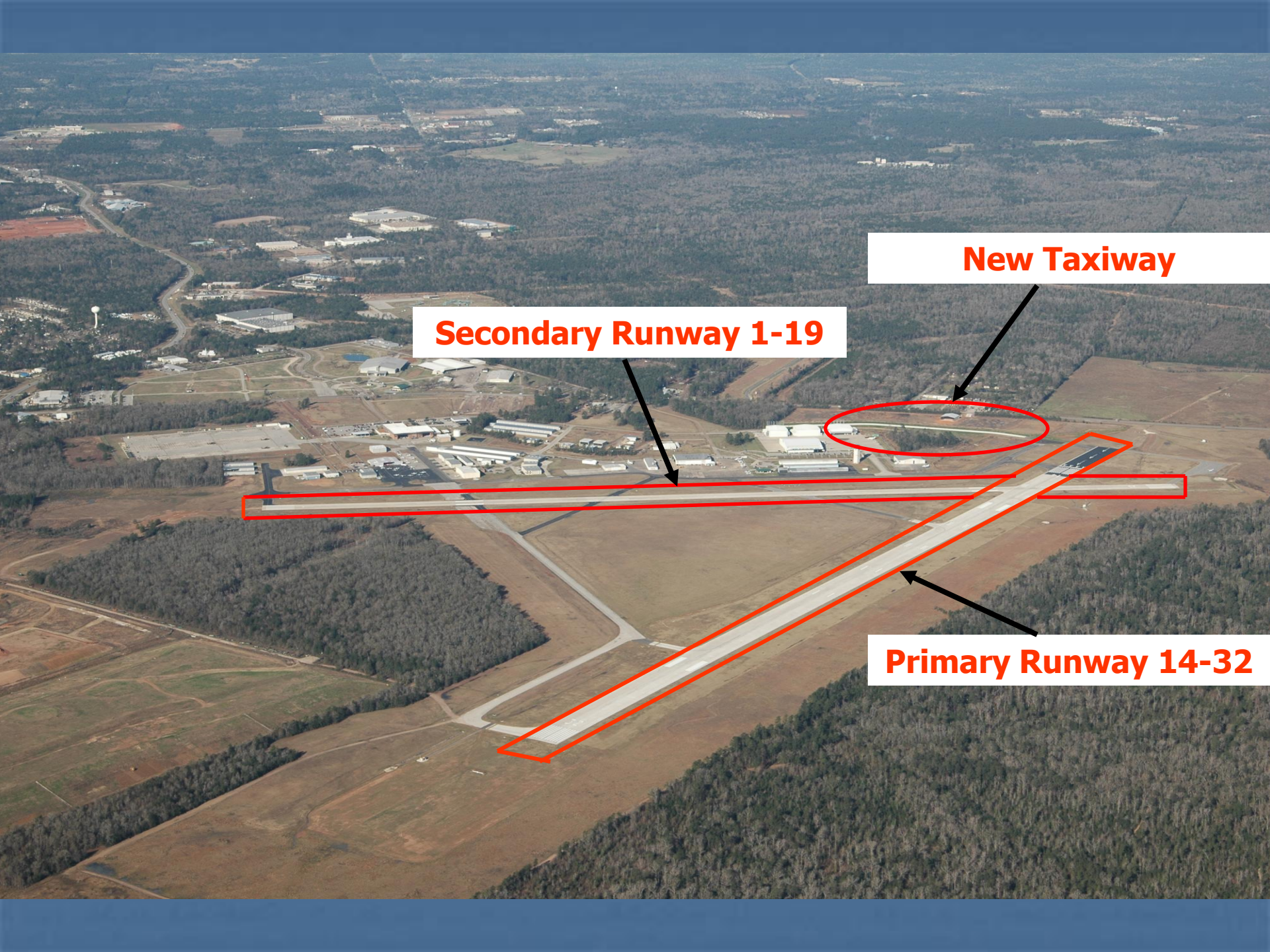


# Airport Master Plan

## Short Term Improvements

- Runway 1/19 Reconstructed and Lengthened to 5000', **COMPLETED IN 2007 - \$6M**
- Runway 14/32 Reconstructed, **COMPLETED IN 2007 - \$8M**





**Secondary Runway 1-19**

**New Taxiway**

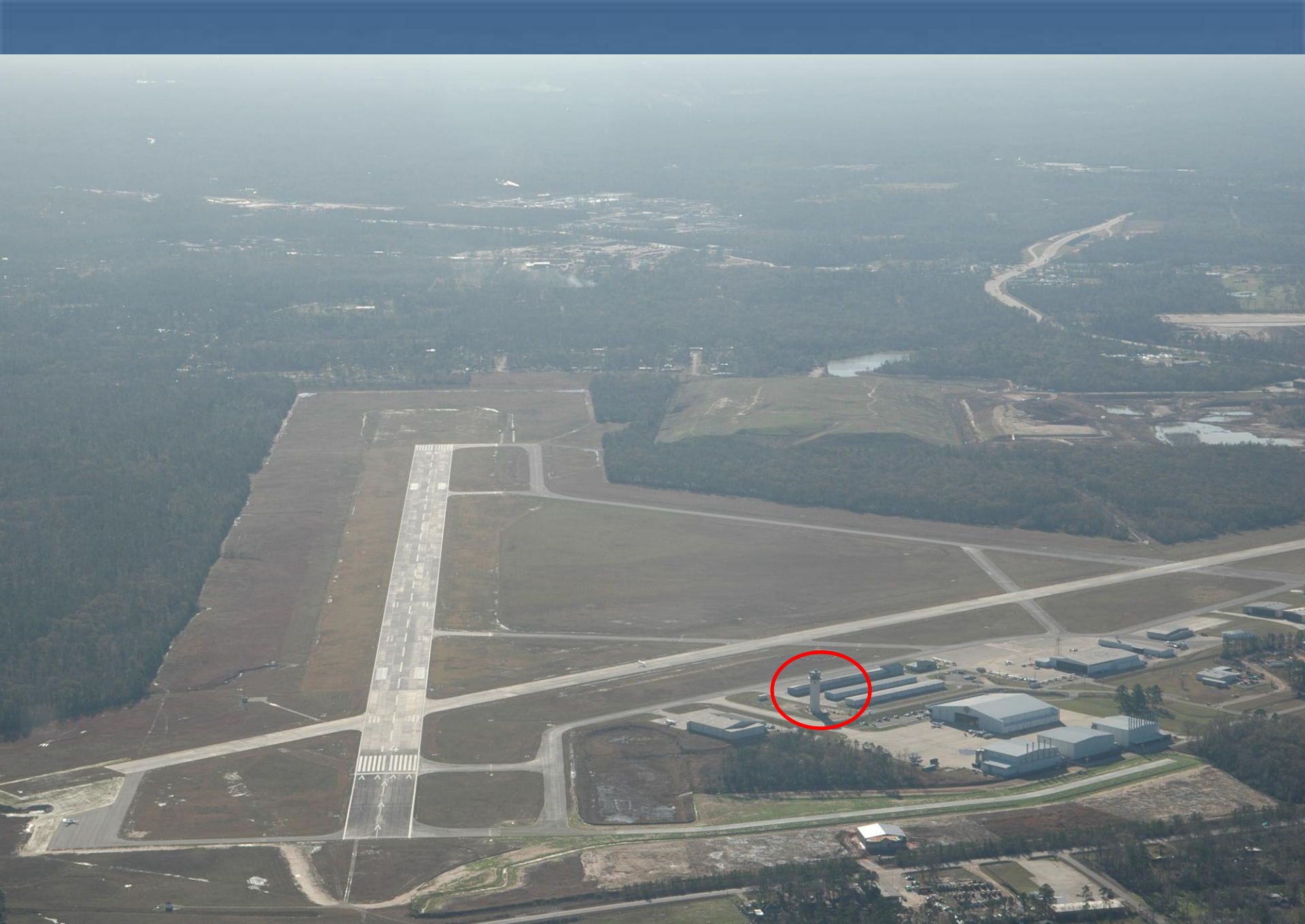
**Primary Runway 14-32**



# Construct Air Traffic Control Tower

- Improve Efficiency for Current Operations
- More Appeal to Corporate and Business
- FAA Contracts and Pays for Staffing
- Project Cost: \$2.78 Million
- County Share: \$348,900
- Commissioned May 7, 2009







88 ft.

105 ft.





# Current Development Projects

- 10 Acres site - New Corporate Hangars
- 3 New Executive Hangars
- 40 Unit Box Hangar Complex (Completed)
- 1.7 Acre Parcel - 6 New Executive Hangars





1.7 Acre Site – 6 new hangars

10 Acre Site – 1 hangar completed

40 Hangar Units (completed)



# Plan to Extend Runway 14/32

- From 6,000' to 7,500'
- Maximum Utilization of Today's Aircraft
- More Appeal to Corporate and Business
- Potential for Small Freight/Cargo Operations
- More Business Development Opportunities
- Engineering/Design 2010
- Construction 2012



# Benefits of Runway 14/32 Extension

- Business aircraft depart with full fuel in the summer months
- Options for additional business aircraft such as B-737
- Options for federal prisoner transport operations to further support the housing of federal prisoners in the County's new jail facility
- Maximum Utilization of Today's Business Aircraft
- More Appeal to Corporate and Business Aircraft
- Potential for Small Freight/Cargo Operations
- Option for the through-the-fence business and technology park

# Airport Master Plan Intermediate and Long Term Improvements

- Southern Development Area
  - Construct Aprons, Taxiways, Roads and Utilities
  - Room for Large and Small Hangars
- Potential for Business and Technology Park – “Through the Fence” Operation



**\$9M Airport Improvement Package**

**Potential  
Business/Technology Air Park  
(by others)**

**Extend Runway Additional  
500' \$1.2M**

**New Airport Entrance**

**Extend Runway  
1,000' \$15M**

**40 Corporate Hangar  
Development**

**Construct Taxiway \$350,000**

**Complete Parallel Taxiway \$2M**

**Utilities \$350,000**

**Partial Parallel Taxiway \$500,000;  
S. Terminal Apron \$1.9M; Taxi  
lanes \$1.9M; Roads and Parking  
\$800,000 -- \$5.1M**

