



Specifications for Crawler Dozers

<i>Manufacturer</i>	<i>Model</i>	<i>Horsepower</i>	<i>Standard Capacity</i>
Case	550 G	67	
	650 H	75	
	650 G	80	
	750 H	81	
	850 G	89	
	850 H	91	
	1150 G	118	
	1150 H	119	
Caterpillar	D-3	70	
	D-4	80	
	D-5/C	90	
	D-5/M	110	
	D-6/M	140	
	D-6/ R	165	
	DGR-XR/XL	175	
	DGR/LGP	185	
	D-7 R	230	
	D-7 R/LGP	240	
	D-8 R	305	
	D-9 R	405	
	D-10 R	570	
	D-11 R	770	
D-11 R	850 (3508)		
Daewoo	DD80L	89	
John Deere	450 G/H	70	
	450 H/LGP	74	
	550 G	80	
	550 H/LGP	84	
	650 G/H	90	



Specifications for Crawler Dozers

<i>Manufacturer</i>	<i>Model</i>	<i>Horsepower</i>	<i>Standard Capacity</i>
John Deere	700 H	115	
	750 C	140	
	850 C	185	
	1050 C	324	
Dresser (International)	TD-7H	70	
	TD-8 H	80	
	TD-9 H	90	
	TD-12 C	125	
	TD-12 CXP	140	
	TD-12 C/LT	142	
	TD-15 E	175	
	TD-20 G/H	225	
	TD-25 G	320	
	TD-40 B	520	
Fiat/Allis	FD-80	84	
	FD-80/LGP	107	
	FD-9	107	
	FD-145	125	
	FD-175	167	
	FD-195 L	167	
	FD-255	241	
Hyundai	H-70	72	
Komatsu	DL 7000	72	
	D 31 E-20	70	
	D 32 E-1	70	
	D 32 P-1	70	
	D 37 E-5	75	
	D 37 P-5	75	
	D 38 F	80	



Specifications for Skid Steer Loaders

Manufacturer	Model	Horsepower	Standard Capacity
Case	1825 B	27	.23
	1838	46	.44
	1840	51	.44
	1845 C	57	.7
	75 XT	57	.7
	85 XT	69	.7
	90 XT	74	.7
	95 XT	74	.7
Caterpillar	216	49	.44
	226	54	.44
	228	54	.44
	236	59	.485
	246/248	74	.485
ICC	DL 6000	60	.5
	DL 7000	72	.5
JCB	165	47	.456
	185	73	.693
	1105	78	.456
New Holland	LS120	14.4	.196
	LS125	15.5	.196
	LS 140/145	30	.426
	LX 485	36	.426
	L/LX 565	40	.563
	LX 665	50	.489
	L 865	61	.619
	DC 70	70	
	DC 80	84	
	DC 100	98	
	DC 100/LGP	110	
DC 150	136		
ASV	RC-30	31.5	.96
	MD-70	70	.59
	MD-70T	75	.59
	MD-2800	70	.74
	MD—2810	75	.74
	2810	83	.74
	HD-4500	80	.74
	HD-4520	115	.74
	4810	105	.74



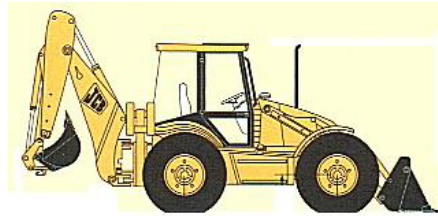
Specifications for Skid Steer Loaders

<i>Manufacturer</i>	<i>Model</i>	<i>Horsepower</i>	<i>Standard Capacity</i>
Bobcat	450	16.5	.189
	453	15.7	.189
	463	15.7	.189
	553	22.5	.148
	751	38	.356
	753 G	43.5	.526
	763 G	46	.526
	773 G	46	.526
	773 TG	56	.526
	863 G	73.5	.578
	873	73.5	.578
	953	71	.744
	963 G	105	.744
Mustang	2040	40	.407
	2042	43	.482
	2050	49	.482
	2060	62	.519
	2070	75	.648
	Daewoo	1760 XL	62
2060 XL		62	.574
John Deere	240	46	.563
	250	61	.619
	260	69	.741
	270	77	.77
	6675	42	.563
Gehl	3310	20	.270
	3615	27	.389
	3725	39	.296
	3825	28	.296
	3515	27	.62
	3935	36	.352
	4625	43	.40
	4635	44	.544



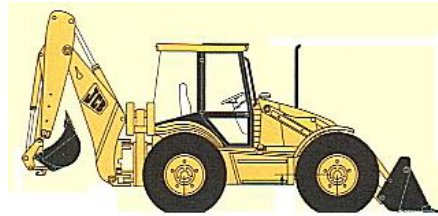
Specifications for Skid Steer Loaders

Manufacturer	Model	Horsepower	Standard Capacity
<i>Gehl</i>	5625	56	.519
	5635	80	.556
	6625	70	.63
	6635	80	.756
	7600	90	.778
	7800	110	1
	SL 3310-3610	20	.389
	SL 4510	40	.482
	SL 6620	60	1
<i>Ford</i>	CL-25	20	.259
	CL 35	28	.407
	CL 45	42	.407
	CL 55	43	.556
	CL 65	64	.63
	<i>Ford-New Holland</i>	554	49
L-553		42.4	.433
L-555		42	.433
L-781		50	.604
L-783		57	.604
L-784		75	.604
L-785		57	.604
<i>JCB</i>	1105	78	.778
	165	47	.456
	185	73	.693
<i>Koehring</i>	1050	31,4	.37
	1350	40	.37
	1650	43	.48
	2150	59.5	.629
	850	19.5	.22
<i>Melroe</i>	443	15	.189
	450	16.5	.189
	453	15.7	.189



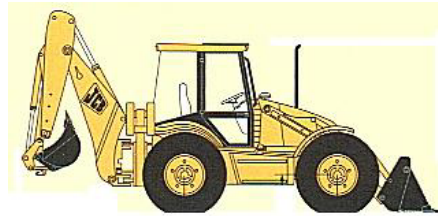
Specifications for Backhoe-Loaders

Manufacturer	Model	Horsepower	Standard Capacity	
<i>Dynahoe</i>	190 K	108	2	
	490 K	121	2	
	490	120	2	
	190	86	2	
	290 K	110	2	
<i>Case</i>	580 L	71	1	
	580 L-2	73	1	
	390-2	80	1	
	580SL	86	1	
	580SL-2	90	1	
	590SL	88	1	
	590SL-2	100	1	
	590SL-2	99	1	
<i>Caterpillar</i>	428	70	1	
	428 II	70	1	
	416	62	1	
	436 II	77	1	
	426	70	1	
	436	80	1	
	416 C	75	1	
	426C(Perkins)	80	1	
	426C (Cat)	85	1	
	436C (Cat)	85/93	1	
	446	93	2	
	446 B	102	2	
<i>John Deere</i>	714 D	70	1	
	210 C	60	1	
	300 D	60	1	
	710 C	115	2	
	315S G	84	1	
	610 C	95	1	
	410 E	90	1	
	510 D	95	1	



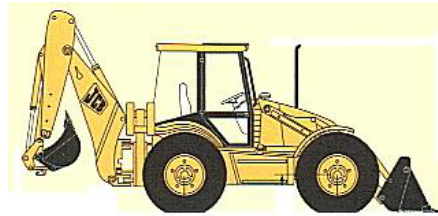
Specifications for Backhoe-Loaders

Manufacturer	Model	Horsepower	Standard Capacity
John Deere	410 G	90	1
	710 D	115	2
Ditch Witch	1025 SK	38	1
Ford	555 B	62	1
	300 D	60	1
	310 C	67	1
	310 D	70	1
	310 G	74	1
	310 E	71	1
	410 C	75	1
	315 SE	80	1
	310 SG	84	1
	310 SE	80	1
	410 D	85	1
	510 C	90	1
	710 B	105	2
	710 C	115	2
	New Holland (Ford)	LB-620	48
340 B		50	1
540 B		61	1
345 C		52	1
445 A		50	1
445 C		52	1
545 A		61	1
455 A		55	1
545 C		62	
455 C		60	1
545/555 B		63	1
655 A		71	1
555 C		65/75	1
755 B		100	2
655 C		75	1



Specifications for Backhoe-Loaders

Manufacturer	Model	Horsepower	Standard Capacity
JCB	208 S	47	$\frac{3}{4}$
	210 S	60	1
	212 S	67	1
	3 CX	77	1
	Super Site Master	80	1
	214 S 4x4	92	2
	214	86	1
	215 S	92	2
	215 S 4x4	92	1
	215 E	86	1
	215	92	2
	215 2WD	92	1
	215 4WD	92	1
	4 CN	85	2
	1400 B	70	1
	217 4WD	92	2
	217 S 4x4	92	2
	214 e	72	1
	214 Turbo	86	1
	1600 B	91	2
	1700 B	91	2
	1550 B	80	1
	217 2WD	92	2
Jl Case	480 E/F	63	1
	580 K	69	1
	580 Super/K	70	1
	580 SK	78	1
	680 K/L	90	2
	590 Turbo	86	1
	780 C/D	112	2
Kobelco	TLK 750	80	1
	TLK 860	90	1
	TLK 760	90	1



Specifications for Backhoe-Loaders

Manufacturer	Model	Horsepower	Standard Capacity
<i>Kobelco</i>	TLK 965	90	1
Kubota	L 3350	40	1/4
	L 4150	50	1/4
	L 3750	45	1/4
<i>Massey Fergeson</i>	MF30 E	48	1
	MF50 E/H	68	1
	MF50 HX 2WDS	74	1
	MF60 HX 2 WD	74	1
<i>New Holland (Ford)</i>	455 D	60	1
	455 D	65	1
	575 D	65	1
	675 D	86	1
	655 D	75	1
	575 E	85	1
	LB 90	90	1
	555 E	79	1
	LB 75	80	1
	655 E	89	1
	675 E	98	1
	LB 110	98	1
	LB 115	108	1
	SKB 900	68	1
	SKB 1000	74	1
	SKB 1000 T	95	1
<i>Waldon</i>	LB 30	22	1/4
	LB 25	25	1/4



Specifications for Crawler Loaders

Manufacturer	Model	Horsepower	Standard Capacity
Bobcat	T 190	56	3cf.
	T 200	73	3cf.
	864 G	73	¼
Caterpillar	935 B	65	1
	931 C	67	1.1
	933 & 933 C	70	1.3
	935 C	78	1.3
	943	80	1.5
	939	90	1.5
	953	110	2
	953 C	121	2.4
	963 B	160	3.2
	973 & 973 C	210	4.2
John Deere	355 D	48	.8
	455 E & 455 G	70	1.3
	555 B	78	1.4
	555 G	90	1.5
	655 B	120	2
	655 C	130	2.4
	755 B	140	2.3
	755 C	177	3.1
Dresser/International	100 G	70	1.1
	125 G	80	1.4
	175 C	142	2
	200	165	2.6
	100 E	65	1.1
	125 E	78	1.4
	250 E	215	3.3



Specifications for Crawler Loaders

Manufacturer	Model	Horsepower	Standard Capacity
<i>FiatAllis</i>	FL 5	70	1
	FL 5 B	70	1.3
	FL 7	84	1.3
	FL 9	88	1.6
	FL 10 C	123	2
	FL 10 E	127	2
	FL 145	128	2
	FL 14 C	150	2.6
	FL 175	167	2.8
	FL 14 E	168	2.8
	FL 20	227	3.5
	FL 7 B	88.5	1.5
	<i>J I Case</i>	455 C	63
855 C		82	1.5
855 E		89	1.5
1155 D		110	1.8
1155 E		118	2
1455 E/D		140	2.3
<i>Komatsu</i>	D 75 S	200	3.3
	4 D 95 S-W	44	0.8
	D 31 S-18	70	1.3
	D 41 S-3	90	1.8
	D 53 S-17	110	2
	D 57 S-1	135	2.4
	D 66 S-1	160	2.6
	D 155 S-1	350	5.9



Specifications for Crawler Loaders

Manufacturer	Model	Horsepower	Standard Capacity
Benat1	3.15	109	1.16
	3.07	96	.63
Bobcat	337 D	53	.046
	331 ED	40	.340
	328 D	27.5	.042
	334 D	40	.045
	325 D	27.5	.290
	328 C	27.5	.044
	325 C	27.5	.042
	322 D	15.7	.044
Case	9007 B	54	.24-.28
	9045 B	178	1.82
	9030 B	131	1.30-1.35
	9060 B	300	3.29-4.17
	9050 B	240	2.59-2.74
	9040 B	178	1.82
	9020 B	106	.92-1.12
	9010 B	106	.92
	9045 B	178	1.82
	9007 B		
Caterpillar	301.8	17.4	.04
	302.5	22.9	.07
	301.5	17.4	.04
	M 320	140	1.37
	M 315	124	1.12
	M 312	114	1.12
	365 B	374	3.60
	5080	428	6.80
	345 B	286	3.40
	330 B	222	2.70
	325 B	168	2.49
	322 B	153	2.40
	320 B	128	1.83



Specifications for Hydraulic Excavators

Manufacturer	Model	Horsepower	Standard Capacity
Caterpillar	312 B	84	.82
	311 B	79	.82
	M 315	124	1.12
	M 318	140	1.37
	315 B	99	1.10
	330	222	2.75
	5230	1,470	22.20
	513 B	800	14.50
	5080 shovel	428	19.2
	307 B	54	.30
	350/350 L	286	3.40
	322 L	153	1.06
	320 N	128	1.05
	312	84	.82
	311	79	.82
	375/375 L	428	5.75-5.76
	5130 shovel	700	11-15.6
	330/330 L	222	.75-2.25
	320	128	1.57
	320 L	128	1.70
	245 D	385	2.5-6.75
	320 C	138	1.83
	313 B	89	.75
	303.5	25	.07
	365 B	374	3.60
	5080	428	6.80
	235 D	250	1-3.5
	E 180	118	1.12
	E 70	52	.37
	215 BSA	105	.5-1.25
	E 300	187	1.75
	E 240	148	1.50
	245 or 245 ME	325	5-6.75
	235 B or 235 BME	215	8.7
	229	145	.75-1.75
	225 BLC	145	.75-1.75



Specifications for Hydraulic Excavators

Manufacturer	Model	Horsepower	Standard Capacity
Caterpillar	215 LC	115	.5-1.25
	205 LC	71	.32-1.03
	229 D	157	0.73-2.1
	219 DLC	140	0.58-1.36
	E 300 B	206	1-2.37
	E 240 B	148	0.75-1.86
	E 200 B	118	0.88-1.42
	325 L	168	2.12
	245 B	360	2.5-4.25
	235 C	250	1.25-3
	231 DLC	200	1.8-2.4
	225 DLC	165	0.73-2.4
	224 B	135	0.46-1.57
	219 D	140	0.58-1.36
	214 BFT	135	0.56-1.31
	213 or 214 B	110	0.56-1.31
	E 120 B	84	0.29-0.93
	E 110 B	79	0.29-0.82
	E 70 B	54	0.18-0.45
	225 SA	135	0.75-1.62
	215 SA or BLC	105	0.5-1.25
	224	124	0.46-1.57
	213 LC	102	0.32-1.12
212	94	0.32-1.12	
211 LC	94	0.32-1.12	
206	71	0.32-1.03	
Daewoo	S 55	54	0.20
	S 330 W-3	244	1.92
	S 200 W-3	143	1.13
	S 120 W-3	132	0.73
	S 400 LC-3	260	2.22
	S 280 LC-3	192	1.44
	S 220 LC-3	135	1.05
	DH 50	46	0.19
S 170 W-3	143	0.99	



Specifications for Hydraulic Excavators

Manufacturer	Model	Horsepower	Standard Capacity
Daewoo	S 035	24.5	0.14
	S 030	20.1	0.09
	S 015	12.5	0.06
	3 010	9.5	0.03
	S 170-V	113	0.91
	S 400 LC-V	275	2.85
	S 330 LC-V	245	2.39
	S 450-3	295.8	2.47
	S 130 LC-V	108	0.88
	S 250 LC-V	162	1.69
	S 220 LC-V	145	1.54
	S 290 LC-V	194	2.29
	S 55	53	0.20
	S 170-3	113	0.91
	S 70-3	56	0.40
	S 200 W-V	144	1.54
	S 130 W-V	132	1
	S 290 LC-V	194	2.29
	DH 130 W	110	0.50
	DH 280	171	1.75
	DH 220 LC	133	0.63
	DH 130-2	91	0.40
	DH 180 LC	118	1.12
	DH 200 W	139	0.63
	DH 280 LC	171	1.63
	DH 200 LC	115	1.12
	DH 130	83	0.75
	DH 450	296	2.45
	DH 320	242	1.83
	DH 170-2	99	0.92
John Deere	17 ZTS	12	0.04
	750	434	2.2-6.3
	550 LC	361	1.3-5.5
	80	55	.18-.75
	50 ZTS **	38	0.23



Specifications for Hydraulic Excavators

Manufacturer	Model	Horsepower	Standard Capacity
<i>John Deere</i>	35 ZTS **	29	0.19
	27 ZTS **	22	0.10
	370	235	1.2-2.74
	330 LC	235	1.2-2.74
	160 LC	110	0.5-1.12
	110	80	0.34-1.06
	450 LC	285	1.56-5
	270 LC	180	0.92-2.03
	230 LC	170	0.92-2.03
	200 LC	140	0.59-1.6
	120	90	0.34-1.06
	792 D-LC	165	2.03
	590 D	95	.3-1.1
	992 E-LC	285	2.30
	892 E-LC	220	1.26-2.6
	190 E	55	0.18-0.65
	70 or 70 D	55	0.31
	595	95	0.63
	790 D	155	1.36
	690 D or DLC	125	0.88
	490 D	75	0.63
	992 D-LC	265	2.38
	892 D-LC	195	1.75
	790 E-LC	155	2.03
	690 E-LC	130	0.9-1.6
	595 D	95	.62-.75
	590 D	95	0.82
	495 D	95	0.63
	490 E	85	1.06
	290 D	65	.5-2.25
	50	39	0.16
	30	24	0.10
	990	260	1.88
	792	180	1.75
	790	155	1.38
	690 C	125	0.88



Specifications for Hydraulic Excavators

Manufacturer	Model	Horsepower	Standard Capacity
<i>John Deere</i>	790	155	1.38
	690 C	125	0.88
	490	75	0.63
	450 C	315	1.56-5
<i>Dresser-Int.</i>	635 or 635 W	105	1.31
	650 B	204	2.38
	649 LC	159	1.81
	645	189	1.81
	635 or W 635 B	133	1.31
	630 OR 630 W	108	1
	6650 LC	404	3.7-4.8
	6400 LC	278	1.5-2.1
	6300 LC	207	1.4-2.1
	6220 LC	153	0.78-1.31
	6200 LC	123	0.6-1.19
	6150 LC	99	0.75-0.96
	6120 LC	84	0.36-0.75
<i>Fiatallis</i>	Y22	20	0.10
	Y14	13	0.05
	Y12	13	0.04
	FX 220 W	165	1.27
	FX 600 LC	400	3.92
	FX 480 LC	316	3.40
	FX 350 LC	230	2.12
	FX 270 LC	184	1.39
	FX 240 LC	165	1.39
	FX 200 LC	135	1.37
	FX 200	135	1.15
	FX 140 LC	100	1.01
	FX 140	100	0.88
	FX 310 LC	195	2.29
	FX 250 LC	169	1.83
	FX 210 LC	137	1.72
	FX 130 LC	93	0.97
	FX 300 LC	177	0.52-2.54



Specifications for Hydraulic Excavators

Manufacturer	Model	Horsepower	Standard Capacity
<i>Fiatallis</i>	FX 220 LC	145	0.52-1.95
	FX 150 LC	91	0.33-1.40
	FH 220 LC	155	0.53-1.25
	FH 200 LC	119	0.35-1.72
	FH 120	81	0.3-0.97
	FE 40 L	243	1.3-2.6
	FE 28 LC	152	0.5-2
	FE 20 LC	105	0.4-1.3
	FE 18 LC	86	0.4-1.3
<i>Gehl</i>	GE 652,602,502,362	31-64	0.17
	GE 292	27	0.15
	GE 342,272	27/31	0.17
	GE 222,192,	18	0.07
	GE 142,152	13	0.04
	GX 45	46	0.12
	GX 35	30	0.07
	GX 30	28	0.06
	GX 20	20	0.06
	GX 10	12	0.02
	GE 1202	98	0.63
	GE 802	61	0.34
<i>Gradall</i>	XL 2200	95	0.81
	XL 4100	138	1.20
	XL 4200	150	1.20
	XL 3300	148	0.80
	XL 2300	110	0.80
	XL 3200	114	1
	XL 3100	190	0.75
	XL 5100	165	1.75
	G 880 E	162	0.33-1.5
	XL 5200 or 5100	162	1.75
	G 660 E	162	0.14-1.25
	G 3 WD-E	173	0.5-0.75



Specifications for Hydraulic Excavators

Manufacturer	Model	Horsepower	Standard Capacity
<i>Hitachi</i>	EX 2500	1,300	18.1
	EX 1800-3 or 2BH	1,000	19-18.3
	EX 1100-3	600	8.20
	EX 750-5 or BH	434	5.75-5.40
	EX 550 LC-5 or BH	361	4.43
	EX 450 LC or -5	301	2.98-3.66
	EX 370-5	228	2.43
	EX 330 LC-5	228	2.43
	EX 270 LC-5	168	2.12
	EX 230 LC-5	156	1.83
	EX 200 LC-5	132	1.57
	EX 160 LC-5	99	1.07
	EX 120-5 or LC	81	0.85-1.57
	EX 110-5 or BH	76	0.77
	EX 80-5	54	0.44
	EX 50 U	38	0.21
	EX 35 U	29	0.14
	EX 220 LC	156	1.83
	EX 3500-2LD	1,760	23.5-32.70
	EX 400 LC	300	2.98
	EX 100	72	0.77
	EX 300 LC	208	2.43
	EX 300-2LC	220	1.5-2.43
	EX 100-2WDBH	110	0.25-0.77
	EX 3500	1,660	21.2-31.4
	EX 270	161	1.2-2.12
	EX 150	91	1.07
	EX 100 WD	108	0.25-0.77
	UE 50	38	0.23-0.84
	UE 40	25	0.07-0.16
	UE 30	23	0.05-0.14
	UE 20	17	0.04-0.09
	UE 10	12	0.03-0.05
	EX 1000	512	3.8-6.7
	EX 270 LC	168	2.12
	EX 200 LC-BH	119	0.67-1.57



Specifications for Hydraulic Excavators

Manufacturer	Model	Horsepower	Standard Capacity
<i>Hitachi</i>	EX 100 BH	72	0.25-0.77
	EX 3500	1,660	21.2-31.4
	EX 1800 LD	920	13.5-19
	EX 1800 BH	920	12.4-18.3
	EX 1100 BH	600	7.84
	EX 1000 LD	512	6.5-7.2
	EX 1100 LD	630	7.3-8.2
	EX 700 LD	420	4.71-5.75
	EX 700 BH	420	5.36
	EX 700 BE	420	2.35-5.36
	EX 400 LD	275	3.01-3.66
	EX 400 LC BH	275	1.78-2.98
	EX 270 BH	161	1.2-2.12
	EX 200-2LC/5	132	1.57
	EX 150-BH	91	0.68-1.07
	EX 100-2	72	0.77
	UH 801	789	10.25-15.5
	UH 501	512	5.25-6.5
	UH 261	345	2.13-4.5
	UH 181	256	1.75-3
	UH 123	157	1.38-2.38
	UH 038 LC	115	0.63-1.5
	EX 17 U	12.3	0.06
	EX 80-5	54	0.44
	EX 3600	1,880	30.10
	EX 120-5	81	0.85
	EX 5500	2,500	38
	EX 5500 shovel	2,500	35.5
	EX 2500	1,302	19.5
	EX 370-5	228	2.43
	EX 2500 shovel	1,302	21.6
	EX 1200	871	9.29
	EX 1200 shovel	671	8.50
	EX 5500 shovel	2,600	35.5
	EX 3500-3 shovel	1,760	32.7



Specifications for Hydraulic Excavators

Manufacturer	Model	Horsepower	Standard Capacity
<i>Hyundai</i>	R 55 W-3	59	0.08-0.24
	R 290 LC-3 RB	183	1.44
	R 290 LC-3 HW	183	1.66
	R 250 LC-3	161	1.03-1.96
	R 210 LC-3 HW	135	0.67-1.75
	R 210 LC-3 LR	135	0.67
	R 160 LC-3	102	0.51-1.05
	R 130 LC-3 HW	102	0.26-0.78
	R 200 W-2	130	0.67-1.57
	R 130 W-2	110	0.29-0.92
	R 170 W-3	116	0.59-1.35
	R 450 LC	296	2.73
	R 320 LC-3	218	1.18-2.75
	R 290 LC-3	182	1.03-2.42
	R 130 LC-3	101	0.29-0.92
	R 450 LC-3	306	1.96-3.66
	R 380 LC-3	260	1.53-3.03
	R 290 LC-3	183	0.26-0.78
	R 180 LC-3	116	0.59-1.35
	280 LC	195	1.50
	200 LC	137	1.14
	130 W	110	0.67
	450 LC	296	2.73
	420 LC	296	1.87
	R 320 LC	235	2.58
	R 290 LC	195	1.66
	300 LC	222	1.3-2.1
	280 LC	195	1.50
	200	137	1.14
	R 130 LC	109	0.67
	200 W	142	1.14
	120 W	111	0.67
	R 39 HD-RB	183	1.66
	R 130 W-3	110	0.29-0.92
	R 200 W-3	145	0.67-1.57



Specifications for Hydraulic Excavators

Manufacturer	Model	Horsepower	Standard Capacity
<i>Insley</i>	800 CTM	188	1
	600 CTM	135	0.88
	1000 D	189	1.25
	H-800 D	168	1
	H-600 D	135	0.88
	H-3500 D	467	3
	H-2500 D	315	2
	H-1500 D	253	1.50
	H-3500 C	400	3
	H-2500 C	290	2
	H-1500 C	255	1.50
	H-1000 C	175	1.25
	H-800 C	160	1
	H-600 C	135	0.88
<i>JCB</i>	JS 450	280	2.50
	JS 330	219	2.46
	JS 260	154	1.91
	JS 200	128	1.56
	JS 160	96	1.18
	JS 70	55	0.39
	804 Super	26	0.14
	8014/8015	16.3	0.05
	803	28	0.10
	801	16.3	0.05
	818/820	107	1.25
	817	107	0.98
	814	107	0.76
	811	84	0.65
<i>Jl Case</i>	9060	276	1.7-3.3
	9050	217	1.2-2.6
	9040	166	0.95-1.8
	9020	103	0.5-1
	9010	87	0.5-0.92
	9030	130	0.59-1.3



Specifications for Hydraulic Excavators

Manufacturer	Model	Horsepower	Standard Capacity	
<i>Ji Case</i>	1085 B	128	0.88	
	170 C	212	1.68	
	1088	128	1.23	
	1085 C	133	0.91	
	888	116	1	
	688	87	0.75	
	220 B	238	2	
	170 B	157	1.63	
	125 B	134	1.50	
	1080 B	128	0.88	
	880 D	114	0.75	
	<i>Kobelco</i>	45 SR	36	0.18
		35 SR	25.9	0.14
25 SR		21	0.10	
15 SR		14.3	0.06	
SK 160 LC		111	0.89	
SK 330 LC		238	1.83	
SK 290 LC		185	1.57	
SK 250 LC		176	1.31	
235 SRLC		143	1.05	
SK 210 LC		143	1.05	
200 SRLC		123	0.98	
ED 180		103	0.68	
13 SR		11.9	0.05	
135 SRLC		94	0.50	
SK 480 LC		315	2.10	
80 CS		54	0.37	
70 SR		54	0.29	
45 SR-2		36.5	0.18	
36 SR-2		23.7	0.14	
30 SR-2		22.7	0.12	
25 SR-2		17.7	0.10	
115 SRDZ	84	0.65		
SK 15 SR	14.3	0.06		
SK 115 DZ	86	0.58		



Specifications for Hydraulic Excavators

Manufacturer	Model	Horsepower	Standard Capacity
<i>Kobelco</i>	SK 300 LC-III	227	1.83
	SK 220 LC-III	163	1.42
	SK 200 LC-III	133	1.13
	SK 150 LC-III	100	0.85
	SK 120 LC-III	84	0.50
	SK 100 LC-III	75	0.44
	SK 60-III	55	0.37
	SK 400 LC-IV	306	2.25
	SK 300 LC-IV	238	1.75
	SK 270 LC-IV	175	1.60
	SK 220 LC-IV	175	1.42
	SK 200 LC-IV	141	1.13
	SK 150 LC-IV	103	0.85
	SK 120 LC-IV	85	0.50
	SK 100 IV	85	0.60
	SK 60 IV	56	0.37
	SK 400 LC-III	300	2.35
	SK 300 LC-III	230	1.83
	SK 035	27	0.13
	SK 025	21	0.08
	SK 015	16	0.05
	SK 007	8	0.03
	SS 60	4	0.01
	K 907 D/LC	123	0.65-1.37
	KD 905 A/LC	88	0.43-0.73
	K 904 E	77	0.22-0.67
	K 903 C	56	0.14-0.52
	K 975	670	9.50
	K 935	300	4.58
	K 916 LC-II	286	2.36
	K 912 LC-II	227	1.83
	K 909 LC-II	153	1.36
	K 907 LC-II	123	1.05
	K 905 LC-II	85	0.52
	K 904-II	75	0.44
	K 903-II	54	0.37



Specifications for Hydraulic Excavators

Manufacturer	Model	Horsepower	Standard Capacity	
Kobelco	SK 1350 shovel	800	10	
	SK 1350	800	9.5	
	SK 600 shovel	300	4.58	
	SK 600	300	2.88	
	SK 400 LC-II	286	2.36	
	SK 300 LC-II	227	1.83	
	KW 904 D	85	0.22-0.67	
	K 975 shovel	670	10	
	K 935	300	2.88	
	K 916	255	2.50	
	K 914	216	1.48-2.75	
	K 912 A	190	1.46-2.4	
	K 909 A/LC	161	0.6-1.83	
	K 907 C/LC	115	0.65-1.7	
	K 914	216	1.48=2.75	
	K 912 A	190	1.46-2.4	
	K 909 A/LC	161	0.6-1.83	
	K 907 C/LC	115	0.65-1.7	
	K 905 LC	85	0.3-1	
	K 904 D	75	0.22-0.67	
	K 903 B45	45	0.14-0.52	
	Koehring	6602 LC	122	0.65-1.57
		6633 LC	185	1.13-1.83
6644		257	1.09-2.97	
6625		160	0.71-1.72	
6644		289	1.09-1.97	
6627		182	0.75-1.75	
6612		87	0.28-0.8	
4475		145	0.31-0.75	
4460/65/70		135/145	0.31-0.75	
1466		415	11/18	
1166		445	6-8.5	
1466 long front		449	4.59-9	
1266		358	4.59-9	
1166 short		445	3-6.5	



Specifications for Hydraulic Excavators

Manufacturer	Model	Horsepower	Standard Capacity
<i>Koehring</i>	1166 long	445	1.62-5
	1066	415	1.62-5
	866	272	2.12-4
	6644	253	1.09-2.97
	6644	285	1.09-2.4
	6633	227	1.13-1.83
	6625	160	0.71-1.72
	6620	126	0.73-1.8
	6614	93	0.33-0.92
	6611	74	0.22-0.65
	6608	51	0.16-0.42
<i>Komatsu</i>	PC 8000	4,020	50
	PC 5500	2,520	36
	PC 4000	1,875	28
	PC 3000	1,260	19.50
	PC 1800-6	905	15.7
	PC 1400	758	12.4
	PC 1100-1 shovel	611	9.2
	PC 1100 LC-6	611	8.5
	PC 750 LC-6	444	4
	PC 750 SE-6	444	5.20
	PC 400 HD	306	3
	PC 300 HD-6LC	232	2.50
	PW 170-ES-6	123	1.50
	PC 128 UU-1	84	0.60
	PC 95-1	72	0.33
	PC 150 LC-6	105	0.88
	PC 250 LC-6LE	158	1.63
	PC 210 LC-6LE	145	1
	PC 1000 LC-1	542	7.1
	PC 220 LC-6LE	158	1.25
	PC 200-6	133	1.5
	PC 120-6	84	1
	PW 210-1	153	1.8
	PC 1000-1	542	9.2



Specifications for Hydraulic Excavators

Manufacturer	Model	Horsepower	Standard Capacity
<i>Komatsu</i>	PC 360 LC-3	212	0.4-2.3
	PC 220 LC-3	148	0.69-1.65
	PC 200 LC-3/5	118	0.5-1.53
	PC 80-3	64	0.11-0.6
	PC 60-5	54	0.11-0.47
	PC 40-5	38	0.08-0.22
	PC 1500-1	410	9.2-18.3
	PC 650-1	419	5
	PC 1500-1	410	9.2-18.3
	PC 400 LC-3	266	1.25-2.93
	PC 300 LC-3	197	1-2.04
	PC 150-3	99	0.5-1
	PC 120-3	82	0.24-0.8
	PC 40-3	35	0.08-0.22
	PC 30-5	30	0.08-0.17
	PC 20-5	25	0.04-0.13
	PC 05-5	13	0.03-0.06
	PC 128 US-2	86	0.88
	PC 600 LC-6	385	3.53
	PC 270 LC-6L	174	2
	PC 95 R-2	82.5	0.56
	PC 400 LC-6LK	306	4
	PC 120-6	86	1
	PC 220 LC-6LE	156	1.25
	PC 1100-6	611	8.5
	PC 200 LC-6LE	133	1.5
	PC 100-6	81	0.50
	PC 120-5	82	0.24-0.8
	PC 150 LC-6	107	1.12
	PC 400 LC-5	276	1.25-2.93
	PC 128 UU-2	86	0.88
	PW 170-ES-6	123	1.50
	PC 300 LC-6LE	232	2.50
	PC 750-6	444	6
	H 455 S	2,236	36.7
	H 655 S shovel	3,714	46



Specifications for Hydraulic Excavators

Specifications for Manufacturer	Model	Horsepower	Standard Capacity
<i>Komatsu</i>	H 255 S shovel	1,207	18.3
	H 485 S shovel	4,000	46
	H 455 shovel	2,236	33
	H 485 S shovel	3,000	44
	H 485 S	3,000	34
	H 95 shovel	609	8.50
	H 95	609	7.20
	H 285 shovel	1,580	25
	H 285	1,580	23
	H 135 shovel	728	13.6
	H 135 S	728	12.4
	PC 300 LC-5	207	1.02-2.5
	PC 650-5	404	3-4.8
	PC 650 SE-5	404	4.71-5.6
	PC 400 HD-5	276	1.25-3
	PC 150 LC-5	99	0.5-1
	PC 400 LC-3 shovel	266	3.4
	PC 280 LC-3	168	0.6-1.8
	PC 180 LC-3	105	0.75-1.3
	PC 604-5	54	0.37
	PF 55 L-1	118	0.47-1
	PC 1600-1	820	5.2-13.2
	PC 1000 LC-1	542	4.1-7.1
	PC 400 LC-5 shovel	276	3.4
	PC 220 LC-5	153	0.69-1.65
	PC 90-1	95	0.46
	PW 60-3	66	0.37
	PW 30-1	27	0.13
	PW 05-1	14	0.05
	PC 60-6	54	0.37
	PC 40-6	39	0.21
	PC 30-6	30	0.13
PC 20-6	26	0.12	
PC 05-6	13	0.05	
PC 1500-1	410	5.2-13.2	



Specifications for Hydraulic Excavators

Manufacturer	Model	Horsepower	Standard Capacity
Liebherr-American	A or R 922	143	0.36-1.4
	R 992	800	4.90
	R 984	525	4.2
	R 974	400	3.5
	R 962 LC	280	3
	R 952 HD	225	2.5
	R 922 LC	143	1.25
	R 912 LC	101	1
	R 942 HDSL	189	1.8
	R 962 LC	280	1.16
	R 952 HD	225	0.75
	R 912 LC	130	0.38
	R 902 LC	105	0.5
	R 900 B	73	0.31
	R 994	1,050	7.5
	R 962	360	4.1
	R 942	179	1.5
	R 932 HDSL	158	1.25
	R 932 HDSL	161	1.4
	R 922	142	1.18
	A 922	152	1.1
	R 912	99	0.75
	A 912	95	1
	R 902	83	0.63
	A 902	86	0.31
Link-Belt	8000	438	4.91
	3900	178	2.25
	1600	54	0.45
	5800	300	4
	4300	240	2.75
	3400	153	0.88
	2800 LF	128	0.75
	2800	128	1.5
	2700	100	1
	2650	85	0.88



Specifications for Hydraulic Excavators

Manufacturer	Model	Horsepower	Standard Capacity
Link-Belt	5800 C	270	1.58
	LS 4300	186	1.52
	LS-5800	280	1.72
	LS 4300 WLF	214	1
	LS 3400 LF	153	0.63
	LS 2800 LF	125	0.48
	LS 2700	100	0.48
	LS 7400 A	445	3.25
	LS 6400	380	2
	LS 580 A	270	1.68
	LS 4300	214	1.25
	LS 3400	153	0.75
	LS 280 B	122	0.63
	LS 2650	87	0.48
	LS 1600	58	0.30
	330 LX	247	1.92
	290 LX	177	1.5
	240 LX	162	0.88
	210 LX	138	1.09
	160 LX	101	0.75
130 LX	89	0.66	
Melroe	320	15.7	.05
	130	54	.42
	116	37	.23
	100	30	.14
	76	19	.09
	56	13	.05
	231	34	.10
	225	23	.09
	220	14	.04
	325	27.5	.09
	331	40	.13
	337	46	.18
	322	15.7	.04
328	27.5	.09	



Specifications for Hydraulic Excavators

Manufacturer	Model	Horsepower	Standard Capacity
<i>Melroe</i>	331 E	40	.13
	341	46	.18
<i>Mustang</i>	ME 6002	64	.51
	ME 5002	40	.51
	ME 3602	31	.51
	ME 3402	31	.51
	ME 2902	27	.51
	ME 2702	27	.51
	ME 2202	18	.20
	ME 1902	18	.20
	ME 1502	13	.12
	ME 1402	13	.12
<i>New Holland</i>	EW 160	95	1.14
	EC 600 LC	381	4.25
	EC 450 LC	303	2.65
	EC 215 LC	133	1.36
	EC 160 LC	95	1.14
	EC 130 LC	80	.95
	EC 45	46	.18
	EC 35	36	.15
	EC 25	28	.08
	EC 15	18	.07
<i>Samsung</i>	SE 280 LC-3	215	2.03
	SE 130 LCM-3	99	.78
	SE 170 W-3	143	.92
	SE 210 W-2A	136	1.38
	SE 50-3	51	.23
	SE 240 LC-3	168	1.75
	SE 210 LC-3	143	1.36
	SE 130 LCM-2	99	.85
	SE 450 LC-2	296	3.43
	SE 130 W-2	99	.64
	SE 350 LC-2	247	2.45



Specifications for Hydraulic Excavators

Manufacturer	Model	Horsepower	Standard Capacity
Samsung	SE 280 LC-2	178	2.22
	SE 210 LC-2	136	1.16
	SE 130 LC-2	99	.85
	SE 130 W	98.6	.69
	SE 350 LC	246	2.03
	SE 280	180	.78
	SE 200 LC	130	1.06
	SE 280 LC	180	1.64
	SE 210 LC	130	1.23
	SE 130 LC	100	.69
	HML 41	80	.40
	HML 31	72	.26
	HML 22	60	.19
Volvo	EC 460	296	5.04
	EC 360	247	3.89
	EC 290	215	.68
	EC 240	180	.68
	EC 210	160	.68
	EW 170	143	2.39
	EC 150	101	1.34
	EC 140	99	1.24
	EC 390	258	3.92
	EC 340	258	3.27
	EC 280	211	2.09
	EW 230	166	1.7
	EC 650	386	5.75
	EC 450	309	4.45
	EC 300	209	1.9
	EC 230 B	166	1.1
	EC 200	145	1.1
EW 200	145	1.44	
EC 150 C	103	.80	
EC 130 C	88.5	.8	



Specifications for Wheel Loaders

Manufacturer	Model	Horsepower	Standard Capacity
Case	621 B	128	2.75
	621 C	130	2.6
	721 B	140	2,75
	721 C	152	3.1
	821 B	170	4
	821 C	187	4.11
	921 B	248	5
	921 C	248	5.25
	Caterpillar	902	45
906		60	1.05
908		81	1.30
910		65	1.38
910 E		75	1.7
910 F		80	1.3
914 G		90	1.8
916		85	2
918 F		98	2
924 F		105	2.25
924 G		110	2.3
926		105	2
926 E		110	2.5
928 G		125	2.9
930		100	1.7
936		125	2.75
936 E		135	3
938 F		140	3.25
938 G		145	3.65
950 B		155	3.25
950 E		160	3.5
950 F		170	4
950 G		180	4
95 F-II		170	4
960 F	200	4.5	
962 G	200	4.25	
966 C	170	3.43	



Specifications for Wheel Loaders

Manufacturer	Model	Horsepower	Standard Capacity
<i>Caterpillar</i>	966 D	200	4.25
	966 E	216	4.5
	966 F	220	5
	966 G	235	5
	970 F	265	5.5
	972 G	265	5.5
	980 C	270	6.75
	980 F	300	6
	980 G	300	7.5
	988 B	375	8.25
	988 C	375	7
	988 F	400	7.8
	988 F-II	430	8
	990	610	11
	990-II	625	12
	992 C	690	13.5
	992 G	800	16
	994	1,250	40
	994 D	1,250	21
	<i>Clark Michigan</i>	175 C	279
275 C		360	7
280 C dozer		302	19.5
35 C		85	1.25
380 B dozer		572	39
45 C		110	1.5
475 C		655	12
475 CT		640	12
55 C		121	2
75 C		151	3
L 120		192	3.5
L 160		252	4.5
L 320		415	8
L 50		84	1.5
L 70		110	2
L 90	144	2.75	



Specifications for Wheel Loaders

Manufacturer	Model	Horsepower	Cubic Yard
Daewoo	M 160	104	2.1
	M 160 TC	104	1.6
	M 200-III	126	2.35
	Mega 200	135	2.4
	Mega 200-III	126	2.5
	Mega 250-III	170	3.1
	Mega 300-III	205	3.8
	Mega 400-III	261	5.1
John Deere	244 H	55	1.3
	304 H	65	1.4
	324 H	80	1.75
	344 E	75	1.63
	344 G	85	1.63
	344 H	98	2
	444 D	90	1.5
	444 E	95	1.75
	444 H	110	2.5
	544 D	115	2
	544 E	115	2.25
	544 H	130	3
	624 E	135	2.63
	624 G	145	2.63
	624 H	160	3.5
	644 D	155	3
	644 E	160	3.25
	644 G	170	3.25
	644 H	180	4.25
	644 H-MH	200	4.5
744 H	260	5.25	
744 H-MH	260	5.75	
	84	52	1
	844	260	5
Dresser/International	510 C	103	1.5
	512	94	1.75
	515 C	120	2
	515 CH	120	2.25
	518	118	2.25
	520 C	142	2.5
	520 CH	142	2.75



Specifications for Wheel Loaders

Manufacturer	Model	Horsepower	Standard Capacity
<i>Dresser/International</i>	525	144	2.75
	532	166	3.25
	538	196	4
	542	224	4.75
	545	264	5.5
	558	291	5.1
	560 C	416	7.5
	568	425	7.5
	510 B	80	1.63
	515 B	105	1.88
	520 B	120	2.25
	530	165	3.25
	550	310	5.75
	530 C	165	3
	540	205	4.25
	555	315	5.5
	560 B	415	7.5
	570	590	12
	580	1,100	22
<i>Fiatallis</i>	345-B	80	1.75
	FR 10	110	2.25
	FR 12	127	2.5
	FR 15	164	3
	FR 20	223	4
	FR 30	275	5.25
	FR 35	350	7
	FR 7	70	1.5
	FR 100	110	2.25
	FR 10 B	110	2.62
	FR 11	125	2.75
	FR 120	130	3
	FR 120-2	145	3
	FR 12 B	140	3.38
	FR 130	135	3



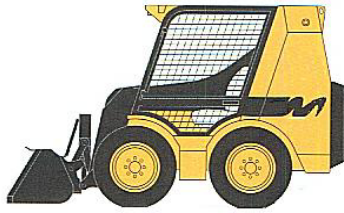
Specifications for Wheel Loaders

Manufacturer	Model	Horsepower	Standard Capacity
<i>Fiatallis</i>	FR 130-2	139	3.25
	FR 140	160	3
	FR 140-2	160	4.5
	FR 15 B	185	4
	FR 160	185	3.75
	FR 160-2	180	4
	FR 180	190	4
	FR 180-2	190	6
	FR 20 B	230	5
	FR 220	235	5.1
	FR 220-2	241	5.5
	FR 70	71	1.38
	FR 7 B	71	1.6
	FR 90	90	1.82
	FR 9 B	90	2
	FW 110	110	2.5
	FW 130	130	3
	FW 60	40	.85
	FW 80	57	1.16
	FW 90	90	2.1
<i>JCB</i>	406	40	.76
	407 BZX	63	1
	408	59	1.05
	409	59	1.2
	409 BZX	76	1.25
	411	84	1.4
	411 BHT	83	1.8
	416	100	1.7
	416 BHT	108	2.1
	426 BHT	132	2.6
	436 HT	144	3.4
456 ZX	197	4	
<i>Jl Case</i>	621	116	2.25
	721	140	2.75



Specifications for Wheel Loaders

Manufacturer	Model	Horsepower	Standard Capacity
<i>JI Case</i>	821	170	3.5
	W 11 B	69	1
	W 14 B	90	1.75
	W 14 C	95	1.75
	W 20 C	110	2
	W 30	153	3
	W 36	205	4
	W 4	37	.5
			8
<i>Kobelco</i>	LK 1150-II	310	6.25
	LK 1500 A	420	8
	LK 200	57	1.05
	LK 300 A	75	1.65
	LK 350-II	90	1.75
	LK 400	90	2
	LK 450-II	90	2
	LK 500	105	2.25
	LK 500 A	115	2.2
	LK 550-II	118	2.5
	LK 600	157	3
	LK 600 A	170	3
	LK 650-II	153	3.5
	LK 700	180	4
	LK 850-II	217	4.5
	WLK 15	249	2.1
	WLK 20	374	2.6
	WLK 25	374	3.25
	WLK 35	436	4.25
	WLK 45	611	5.25
	WLK 9	167	1.3
<i>Komatsu</i>	WA 120-3L	100	1.85
	WA 180-3L	110	2.25
	WA 180-3MC	120	2.5
	WA 250-3MC	131	3
	WA 250 PT-3MC	131	2.5



Specifications for Skid-Steer Loaders

Manufacturer	Model	Horsepower	Standard Capacity
<i>Komatsu</i>	WA 320-3MC	162	3.5
	380-3MC	189	4.25
	420-3MC	215	4.8
	450-3MC	260	5.5
	WA 500-3	315	6.5
	WA 600-3L	450	8
	WA 700-3	641	11.41
	WA 800-2	789	13.7
	WA 900-1	853	17
	WA 12-3L	100	1.85
	WA 180-1	118	2.25
	WA 180-3L	110	2.25
	WA 250-1	144	2.75
	WA 320-3L	162	3.3
	WA 380-3L	189	4
	WA 420-3L	215	4.5
	WA 450-3L	260	5.5
	WA 500-1	291	6
	WA 700-1L	641	11.1
	WA 100-1	73	1.8
	WA 150-1	94	2.1
	WA 200-1	108	2.2
	WA 20-1	22	.34
	WA 300-1	143	3
	WA 30-2	27	.44
	WA 350-1	163	3.5
	WA 400-1	197	4.1
	WA 40-1	41	.78
	WA 450-1	237	4.6
	WA 470-1	260	6.7
	WA 800-1	789	13.7
	WA 120-1	94	1.75
	WA 180-1	118	2,25
	WA 250-1	144	2.75
	WA 320-1	166	3.25
	WA 380-1	196	4



Specifications for Motor Graders

Manufacturer	Model	Horsepower	Standard Blade	
Caterpillar	120 B/G	125	12'	
	120H	140	12'	
	12 G	135	12'	
	12 H	140	12'	
	130 G	135	12'	
	135 H	155	12'	
	140 B/G	150	12' & 13'	
	140 H	185	12'	
	143 H	185	12'	
	14 G	200	14'	
	14 H	215	14'	
	160/163 H	200	12'	
	16 G/H	275	16'	
	24 H	500	24'	
	Champion	100 T	NA	24'
		710/710A	135	12'
716 A		135	12'	
716 A-VHP		160	12'	
720		153	12'	
720 VHP		155/185	12'	
726 A		153	12'	
726 A VHP		155/185	12'	
730 & A		187	12'	
730 VHP		210	12'	
736 A		187	12'	
736 A VHP		200	12'	
740 & A		210	12'	
740 VHP		210/235	12'	
740 A VHP		235	12'	
750 & A		200	14'	
750 A VHP		235	12'	
760		NA	14'	
780 & A		200	14'	
780 A VHP		235	14'	
C 50 A	80	10'		



Specifications for Motor Graders

Manufacturer	Model	Horsepower	Standard Blade
Champion	C 56 A	76/100	10'
	C 60	76/100	10'
	C 60 A	80	10'
	C 66 A	140	10'
	C 70	76/100	10'
	C 70 A	80	10'
	C 76 A	110	10'
	C 80 A	80	10'
	C 86 A	110	10'
	John Deere	570 A	NA
570 B		90	12'
670 B		135	12'
670 C		140	12'
670 CH VHP		155	12'
672 B		135	12'
672 CH-VHP/AWD		160	12'
770 B		155	12'
770 B-H		155/185	12'
770 C		155	12'
770 CH-VHP		185	12'
772 B		155	12'
772 B-H		155/185	12'
772 CH-VHP/AWD		205	12'
Dresser	830	144	12'
	A-400 E	NA	12'
	A-500	NA	12'
	A-525	NA	12'
	A-550	NA	12'
	A-560 E	NA	12'
	A-566 E	NA	12'
	A-600	NA	12'
	A-606	NA	12'
	850	166	12'
	870	204	12'



Specifications for Motor Graders

Manufacturer	Model	Horsepower	Standard Blade
<i>Dresser</i>	A-450 E	144	12'
<i>Fiatallis</i>	65 B or C	80	10'
	FG 105 A-B	196	14'
	FG 65 C turbo	100	12'
	FG 70 A or B	135	12'
	FG 75, A & B	135	12'
	FG 85, A & B	162	14'
	FG 95 & A	NA	14'
<i>Gallion</i>	830 B & C	144	12'
	850 B&C	166	12'
	870 B&C	204	12'
<i>Komatsu</i>	600	110	10'
	830 C/AWD	144	12'
	850 C/AWD	166	12'
	870 C/AWD	204	12'
	GD 505 A-2	NA	12'2"
	GD 525 A-1	135	12'
	GD 530 A-2C	144	12'
	GD 555-3/VHP	160	12'
	GD 625-1	155	12'2"
	GD 650 A-2C	166	12'
	GD 655-3/VHP	190	12'
	GD 670 A-2C	204	12'
	GD 675-3/VHP	200	14'
	GD 725-1	200	12'
	GD 750 A-1	225	14'
	GD 825 A-2E	280	16'2"
	GD 515 A-1	125	12'
	GD 615 A-1	140	12'

