



Texas Stream Team - Over Two Decades of Success

Will Merrell

*Environmental Planner & TST Regional
Coordinator*

will.merrell@h-gac.com

713-993-4594





Program Mission

Facilitate environmental stewardship by empowering a statewide network of concerned volunteers, partners, and institutions, in a collaborative effort to promote a healthy and safe environment through environmental education, data collection, and community action.

■ ■ ■ Training New Monitors



Phase I – Classroom

Orientation, Demonstration, Practice



Phase II – Group Field Training

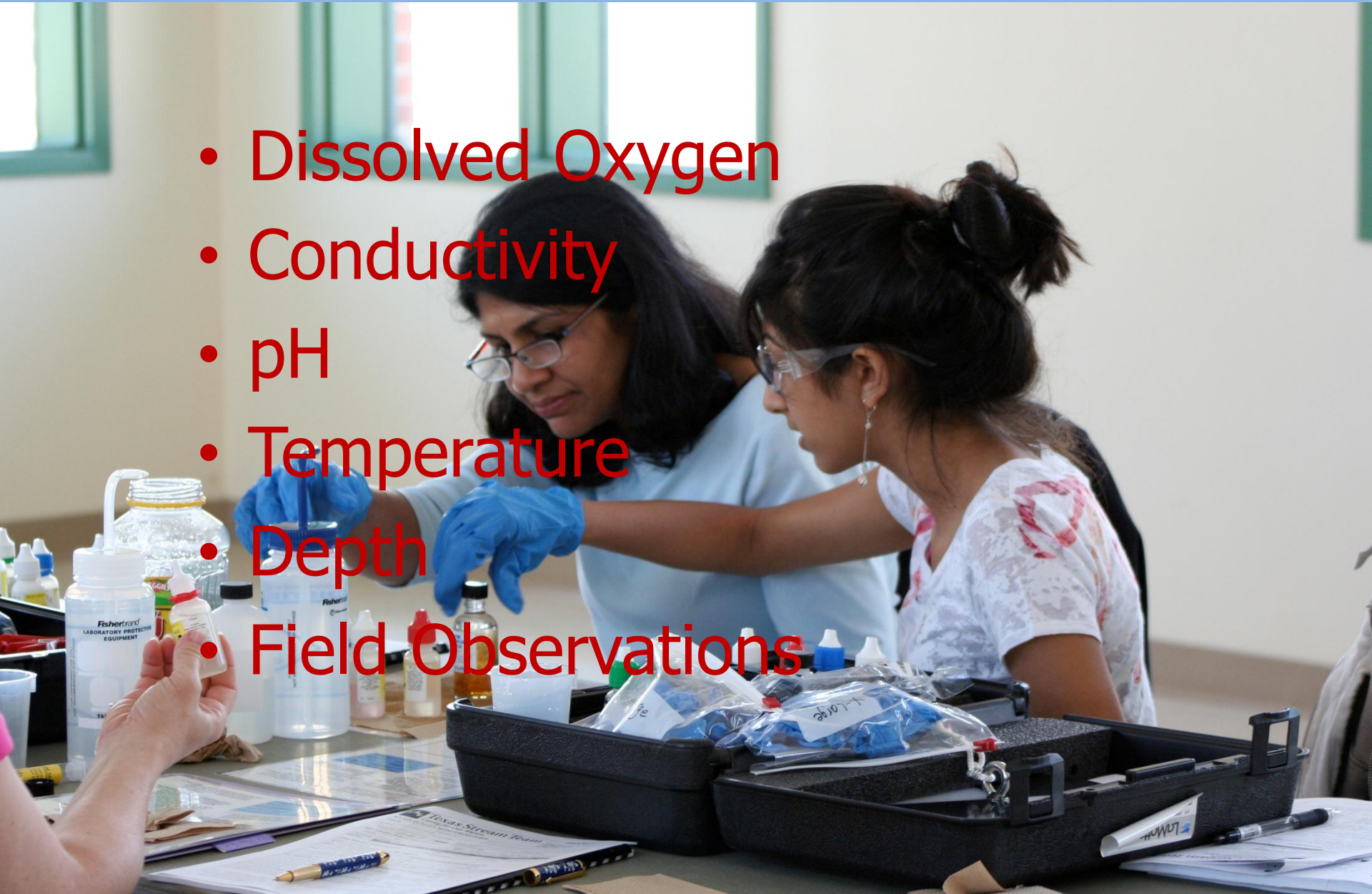
Individual Testing, Focus on Field Observations



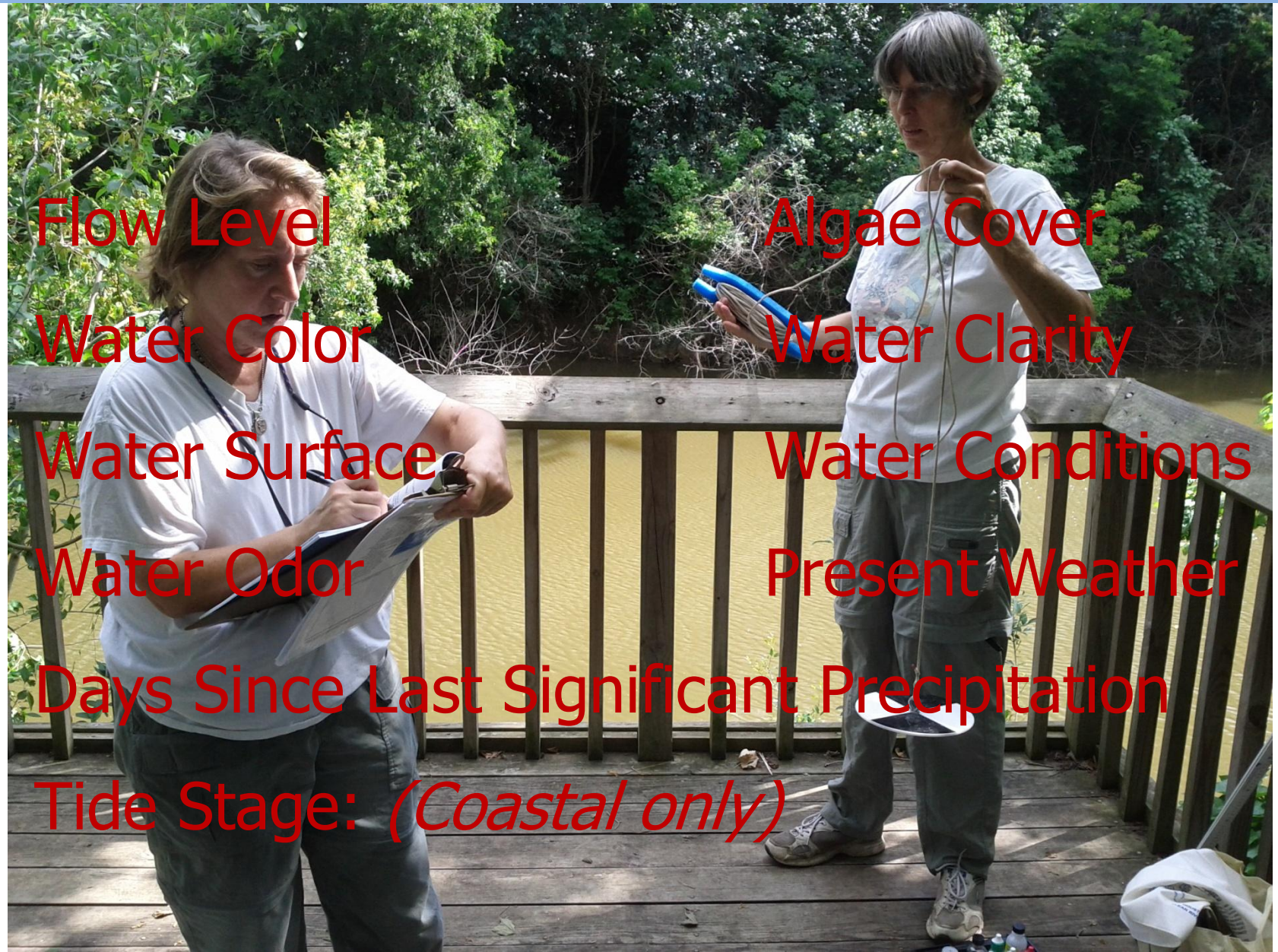
Phase III – Site Visit

■ ■ ■ Texas Stream Team Monitoring

- Dissolved Oxygen
- Conductivity
- pH
- Temperature
- Depth
- Field Observations



Field Observations



Flow Level

Water Color

Water Surface

Water Odor

Days Since Last Significant Precipitation

Tide Stage: *(Coastal only)*


Algae Cover

Water Clarity

Water Conditions

Present Weather

Data Sheet

 Texas Stream Team <i>Caring for Our Waters</i>						Submit to: Houston-Galveston Area Council Clean Rivers Program P.O. Box 22777 Houston TX 77227-2777 Phone: 832-681-2564 Stream.Team@h-gac.com														
Group ID			Monitors ID #																	
Site ID #			Site Description																	
Sample Date <small>MM-DD-YY</small>			Sample Time <small>(military HHMM)</small>			Sample Depth <small>Meters (not total depth)</small>														
Meter Calibration: (Within 24 hours of sampling.)						YES			NO											
Calibration	Date	Time	Standard Value	Standard Temp (C°)	Initial Meter Reading	Meter Adjusted To														
Conductivity			NA			NA			NA											
pH (7.0)			NA			NA			NA											
Core Test and Measurements						Reagents: Are any reagents expired?			YES			NO								
Conductivity						List expired reagents:														
TDS Low/3						TDS High/4														
Air Temperature (C°)						Water Temperature (C°)						Additional Test Conducted (nutrients, fecals, etc.)								
Dissolved Oxygen (mg/L)						1. Type			Reading											
Average 1 st titration						2 nd titration			2. Type			Reading								
pH (Standard Units)						3. Fecal Coliform or E.Coli			Reading			coliform 100 ml.								
SECCHI Disk Transparency (Meters)						Sources of Readings			Certified Lab			Monitor								
Total Depth (meters)																				
Field Observations						Coastal Area Salinity Test and Observations														
FLOW SEVERITY 1-no flow 2-low 3-normal 4-flood 5-high 6-dry						= initial reading example: 1.0 _ _ _ _														
ALGAE COVER 1-absent 2-rare (<25%) 3-common (26-50%) 4-abundant (51-75%) 5-dominant (>75%)						- . 0 0 1 0						Water temp. = °C								
WATER COLOR 1-no color 2-light green 3-dark green 4-tan 5-rod 6-grass/brown 7-black						example: _ _ _ _ _														
WATER CLARITY 1-clear 2-cloudy 3-murky						(+ or -)			_ _ _			correction factor Table 210.I								
WATER SURFACE 1-clear 2-scum 3-film 4-debris 5-storm						= corrected density example: 1.0 _ _ _ _														
WATER CONDITIONS 1-calm 2-ripples 3-waves 4-white cap						find salinity in Table 210.II														
WATER ODOR 1-none 2-od 3-weak (pungent) 4-average 5-rotten egg 6-fabry 7-musty						SALINITY (ppt)			SAMPLE TEMP °C											
PRESENT WEATHER 1-clear 2-cloudy 3-overcast 4-mis						TIDE STAGE: 1-low 2-falling 3-stuck 4-rising 5-high														
DAYS SINCE LAST SIGNIFICANT PRECIPITATION (one-off)						Measurement Comments and Field Observations														
inches RAINFALL ACCUMULATION (last 3 days)																				
MINUTES TOTAL TIME SPENT SAMPLING AND TRAVELING						MILES TOTAL ROUNDTRIP DISTANCE TRAVELED						TOTAL NUMBER OF PARTICIPANTS								
CERTIFIED MONITOR'S SIGNATURE						DATE														
DATA MANAGER'S SIGNATURE						DATE														

Texas Stream Team Database

Texas Stream Team Database Revised Sept27 2012

Create External Data Database Tools Acrobat

Cut Copy Format Painter Clipboard Font Rich Text Records Sort & Filter Find

Warning Certain content in the database has been disabled Options...

Switchboard backup

Subjects

- Old bacteria data
- d
- ring Sites
- utoCorrect Log
- teria data
- ignments
- oard Items
- Records
- Format
- ntees
- Group
- er Site Assignme...

Enter New Data

View and Manage Site Information


Add New Site

Manage Volunteer Information

Add New Volunteer

Retrieve Data

**Houston -Galveston Area Council
Texas Stream Team Database**



Texas StreamTeam
Caring for Our Waters

Water Resources Information Map

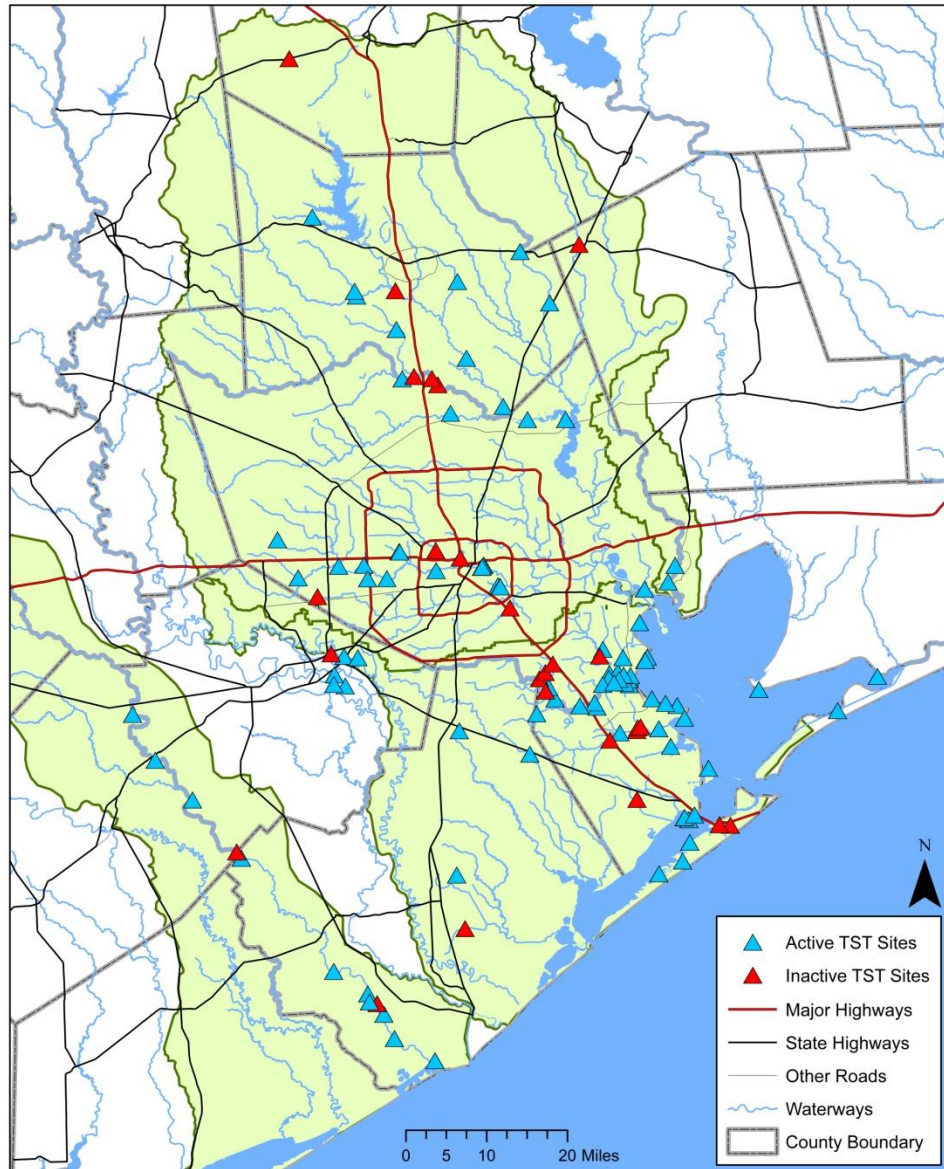
The screenshot displays the 'Water Resources Information Map' interface. At the top left, there is a blue water drop icon and the title 'Water Resources Information Map' with the subtitle 'View water quality data for the region'. The map shows a satellite view of the Houston area with various colored markers (blue, green, yellow, orange, red, purple) representing monitoring stations. A 'Search and Identify' panel is open on the left, featuring 'Graphical Search' and 'Text Search' buttons, a 'Search Layer' dropdown menu set to 'Monitoring Stations', and a 'Clear' button. A 'Disclaimer' dialog box is overlaid on the map, containing the following text:

H-GAC GIS Disclaimer
This product is for informational purposes and may not have been prepared for or be suitable for legal, engineering, or surveying purposes. It does not represent an on-the-ground survey and represents only the approximate relative location of property boundaries. Mapping may not reflect on the ground conditions. The Houston-Galveston Area Council makes no further claims as to the accuracy or

Accept

TST Monitoring

Texas Stream Team Monitoring Stations



Stream Team Monitoring

- 97 Volunteers
- 96 Sites

New Additions

- SJRA Lake Conroe
- City of Missouri City

Next Training

- Saturday, April 18th at Jesse H. Jones Park and Nature Center
- 20634 Kenswick Dr, Humble, TX 77338



■ ■ ■ Questions?

Will Merrell

*Environmental Planner & TST Regional
Coordinator*

will.merrell@h-gac.com

713-993-4594

