

## HOUSTON-GALVESTON AREA COUNCIL



### Temporary Pedestrian/Bicycle Counters Data Summary

Deployment Summary	
Sponsoring Agency	Houston-Galveston Area Council Texas Transportation Institute
Deployment Period	Thursday, December 10, 2015 – Monday, January 4, 2016
Number of Counters Deployed	13
Facility Description	Sidewalks along Westheimer Road at Intersections within Major Commercial Areas (City of Houston: Highland Village and The Galleria)
Locations Deployed (Houston-Galveston Area Council)	
Counter #1	Weslayan Street Northbound South of Westheimer Road
Counter #2	Westheimer Road Eastbound East of Weslayan Street
Counter #3	Westheimer Road Westbound East of Weslayan Street
Counter #4	Willowick Road Southbound North of Westheimer Road
Counter #5	Willowick Road Northbound North of Westheimer Road
Counter #6	Westheimer Road Eastbound West of Weslayan Street
Counter #7	Westheimer Road Westbound West of Weslayan Street
Locations Deployed (Texas Transportation Institute)	
Counter A	Weslayan Street Southbound South of Westheimer Road
Counter B	Westheimer Road Eastbound East of McCue Road
Counter C	Westheimer Road Eastbound West of McCue Road
Counter D	McCue Road Northbound North of Westheimer Road
Counter E	McCue Road Southbound North of Westheimer Road
Counter F	Westheimer Road Westbound West of McCue Road

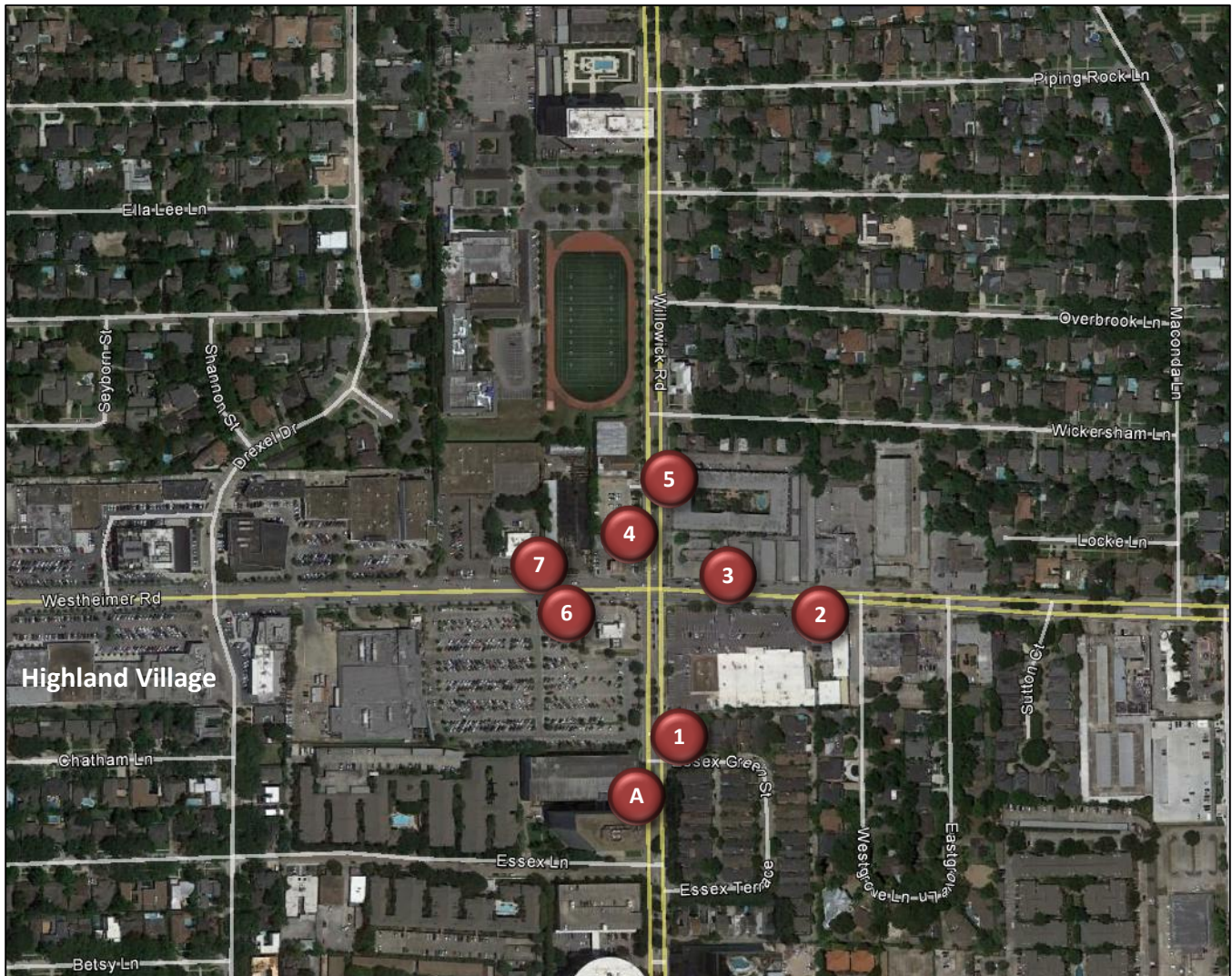
#### About the Temporary Pedestrian/Bicycle Counters

The Houston-Galveston Area Council (H-GAC) has temporary counters (TRAFx Infrared Trail Counters: Generation III) that can be borrowed by local governments and transportation agencies to count the number of people using off-street pedestrian and bicycle facilities. Infrared technology is used to count the number of people passing the counter. The counters do not differentiate between pedestrians and bicyclists, but count the total number of users.

The Texas Transportation Institute (TTI) owns additional temporary counters that it deploys along off-street pedestrian and bicycle facilities statewide.

## Counter Locations

Westheimer Road at Wesleyan Street/Willowick Road (City of Houston: Highland Village)



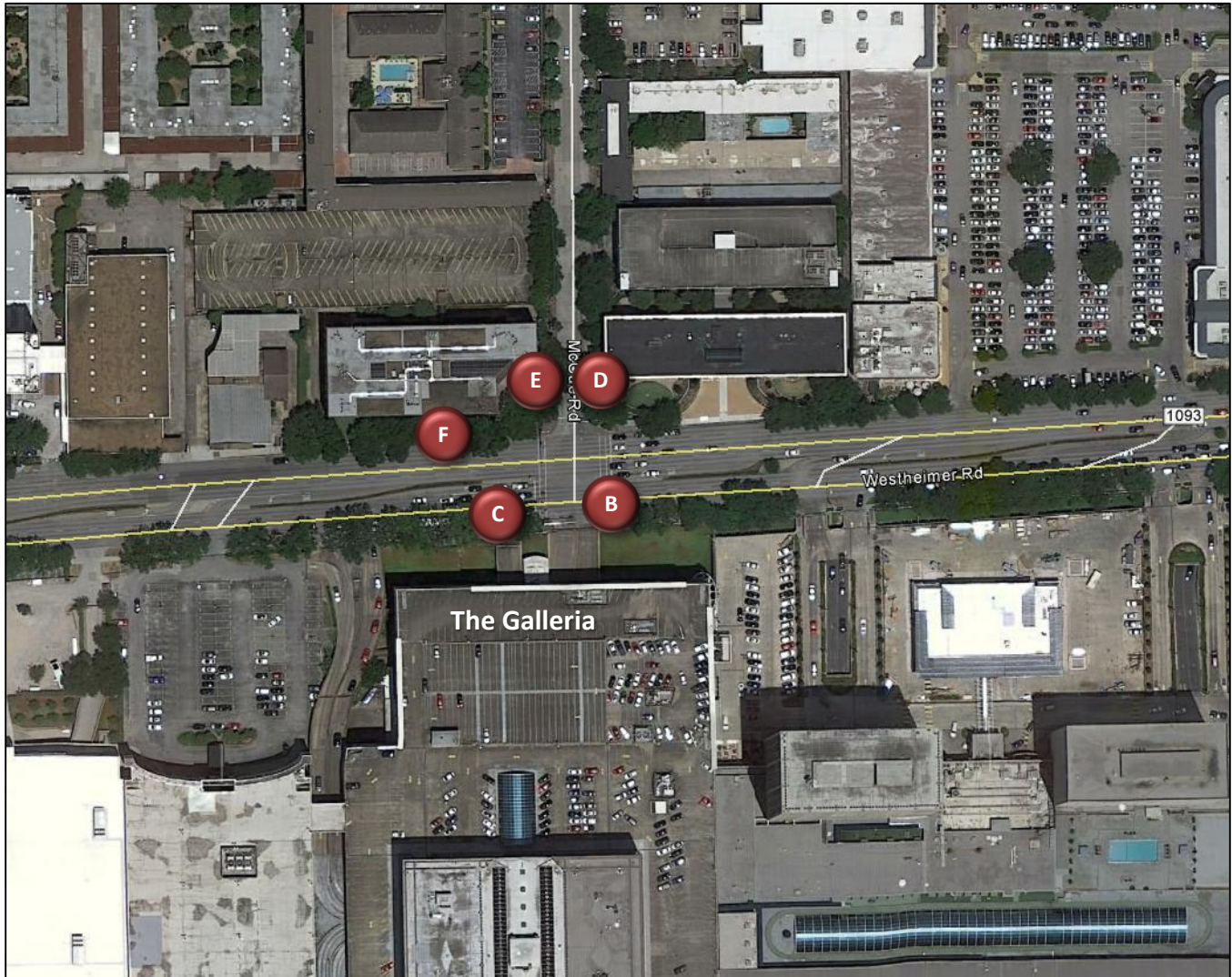
Counter	Location	Total Users	Average Daily Usage
1	Wesleyan Street Northbound South of Westheimer Road	1,592	61
2	Westheimer Road Eastbound East of Wesleyan Street	1,673	120
3	Westheimer Road Westbound East of Wesleyan Street	835	32
4	Willowick Road Southbound North of Westheimer Road	3,141	121
5	Willowick Road Northbound North Westheimer Road	1,389	53
6	Westheimer Road Eastbound West of Wesleyan Street	2,031	78
7	Westheimer Road Westbound West of Wesleyan Street	N/A	N/A
A	Wesleyan Street Southbound South of Westheimer Road	2,678	103

Note #1 Counter #2 stopped collecting data before the other counters, at approximately 9:00 p.m. on Wednesday, December 23, 2015.

Note #2 Counter #7 malfunctioned and did not collect data during the deployment period

## Counter Locations

Westheimer Road at McCue Road (City of Houston: The Galleria)



Counter	Location	Total Users	Average Daily Usage
B	Westheimer Road Eastbound East of McCue Road	13,968	607
C	Westheimer Road Eastbound West of McCue Road	13,090	1,091
D	McCue Road Northbound North of Westheimer Road	3,777	145
E	McCue Road Southbound North of Westheimer Road	6,031	232
F	Westheimer Road Westbound West of McCue Road	9,877	658

Note #3 Counter B stopped collecting data before the other counters, at approximately 9:45 p.m. on Friday, January 1, 2016.

Note #4 Counter C stopped collecting data before the other counters, at approximately 6:00 p.m. on Monday, December 21, 2015.

Note #5 At the end of the deployment period, Counter E was found on the ground at the bottom of the post it was attached to, which may have impacted data collected.

Note #6 Counter F was vandalized sometime during the deployment period, which may have impacted data collected.

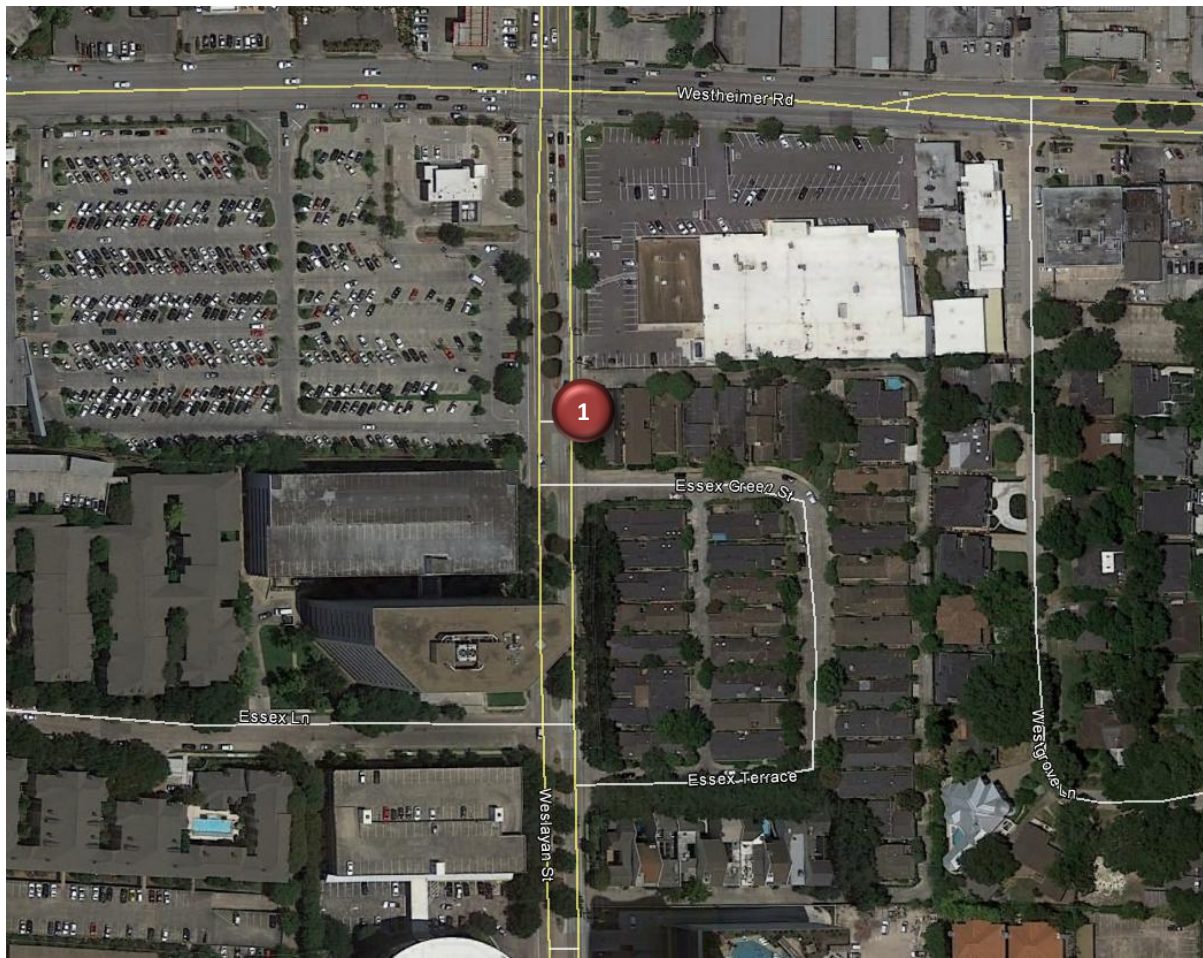
**Counter #1**

Weslayan Street Northbound South of Westheimer Road

Location Information		
Location Name	Weslayan Street Northbound South of Westheimer Road	
Location Description	Sidewalk along Weslayan Street Northbound South of Westheimer Road near Highland Village (City of Houston)	
Jurisdiction	City of Houston	
Agency Deployed	Houston-Galveston Area Council/Texas Transportation Institute	
GPS Coordinates	29°44'26.64"N, 95°26'29.64"W	
Surrounding Land Uses	North	Commercial/Retail, Multi-Family Residential, Single-Family Residential, Institutional (Looscan Neighborhood Library and River Oaks Baptist School)
	South	Multi-Family Residential, Office
	East	Multi-Family Residential, Commercial/Retail
	West	Office, Commercial/Retail, Multi-Family Residential
What object was device secured to?	Light Post	
Sidewalk Width	4'	
Buffer Width	4.5'	
Street Width	Four-Lane Divided Roadway	
Parallel Parking	No	
Landscaping or Trees	Yes	
Sidewalk Pavement Type	Concrete	
ADA Ramps	Yes	
Sidewalk Condition	Good	
Speed Limit	35 miles per hour	
Street Lighting	Yes	
Street Traffic Volume	24,617 (2700 Weslayan Street: 2013)	
Transit	Nearby (METRO Bus Stop 350' South on Weslayan Street Southbound)	
Shade	Yes	
Have counts been collected by H-GAC at this location before?	No	

Trends
<ul style="list-style-type: none"> <li>• There tends to be higher usage on weekdays than during weekends.</li> <li>• On weekdays, usage increases as the day progresses, with the highest usage in the late afternoon (4:00 p.m. – 5:00 p.m.).</li> <li>• During weekends, usage is highest in the afternoon (1:00 p.m. – 5:00 p.m.).</li> </ul>

**Location Information: Map**



**Location Information: Photos**



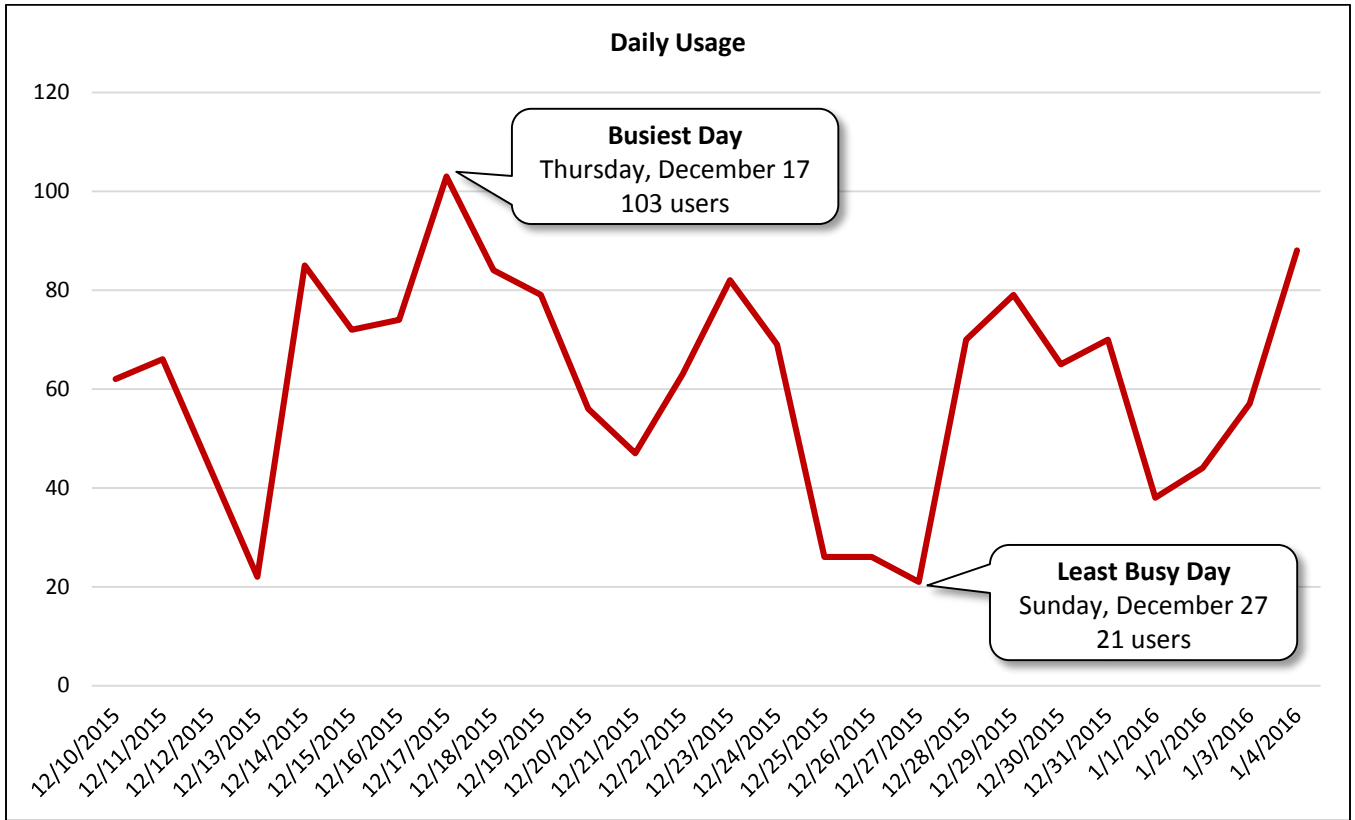
Image 1: Sidewalk along Wesleyan Street Facing North



Image 2: Sidewalk along Wesleyan Street Facing South

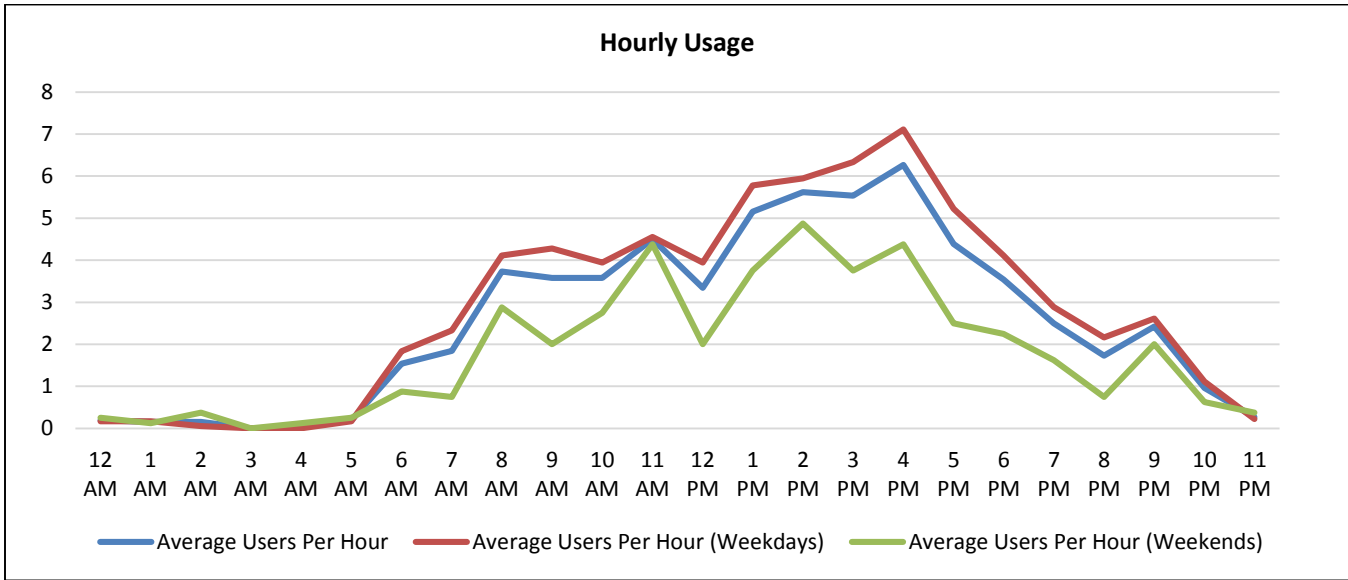
<b>Daily Usage</b>				
Weslayan Street Northbound South of Westheimer Road				
Date	Users	Select Weather Data*		
		High Temperature (°F)	Low Temperature (°F)	Precipitation (inches)
Thursday, December 10, 2015	62	80	62	0
Friday, December 11, 2015	66	84	69	0
Saturday, December 12, 2015	44	77	71	0.06
Sunday, December 13, 2015	22	75	50	1.78
Monday, December 14, 2015	85	75	51	0
Tuesday, December 15, 2015	72	75	59	0.13
Wednesday, December 16, 2015	74	73	51	1.14
Thursday, December 17, 2015	103	66	46	0
Friday, December 18, 2015	84	62	42	0
Saturday, December 19, 2015	79	64	46	0
Sunday, December 20, 2015	56	69	53	0
Monday, December 21, 2015	47	75	66	0.28
Tuesday, December 22, 2015	63	73	62	0.01
Wednesday, December 23, 2015	82	84	69	0
Thursday, December 24, 2015	69	80	64	0
Friday, December 25, 2015	26	86	73	0
Saturday, December 26, 2015	26	78	73	0.02
Sunday, December 27, 2015	21	77	44	0.71
Monday, December 28, 2015	70	53	39	0.01
Tuesday, December 29, 2015	79	53	41	0
Wednesday, December 30, 2015	65	55	48	0
Thursday, December 31, 2015	70	53	48	0
Friday, January 1, 2016	38	50	46	0
Saturday, January 2, 2016	44	50	44	0.01
Sunday, January 3, 2016	57	62	42	0.02
Monday, January 4, 2016	88	62	41	0
<b>Total</b>	1,592			
<b>Average Daily Usage</b>	61			
<b>Average Daily Usage (Weekday)</b>	69			
<b>Average Daily Usage (Weekend)</b>	44			
		<b>Notes</b>		
		Christmas: Friday, December 25, 2015 New Year's Day: Friday, January 1, 2016 Houston Independent School District – Winter Break: Monday, December 21, 2015 – Monday, January 4, 2016		

\*Weather conditions recorded at KMCI.



**Hourly Usage**  
Weslayan Street Northbound South of Westheimer Road

Time of Day	Average Users Per Hour	Average Users Per Hour (Weekdays)	Average Users Per Hour (Weekends)
12:00 a.m.	0.2	0.2	0.3
1:00 a.m.	0.2	0.2	0.1
2:00 a.m.	0.2	0.1	0.4
3:00 a.m.	0.0	0.0	0.0
4:00 a.m.	0.0	0.0	0.1
5:00 a.m.	0.2	0.2	0.3
6:00 a.m.	1.5	1.8	0.9
7:00 a.m.	1.8	2.3	0.8
8:00 a.m.	3.7	4.1	2.9
9:00 a.m.	3.6	4.3	2.0
10:00 a.m.	3.6	3.9	2.8
11:00 a.m.	4.5	4.6	4.4
12:00 p.m.	3.3	3.9	2.0
1:00 p.m.	5.2	5.8	3.8
2:00 p.m.	5.6	5.9	4.9
3:00 p.m.	5.5	6.3	3.8
4:00 p.m.	6.3	7.1	4.4
5:00 p.m.	4.4	5.2	2.5
6:00 p.m.	3.5	4.1	2.3
7:00 p.m.	2.5	2.9	1.6
8:00 p.m.	1.7	2.2	0.8
9:00 p.m.	2.4	2.6	2.0
10:00 p.m.	1.0	1.1	0.6
11:00 p.m.	0.3	0.2	0.4





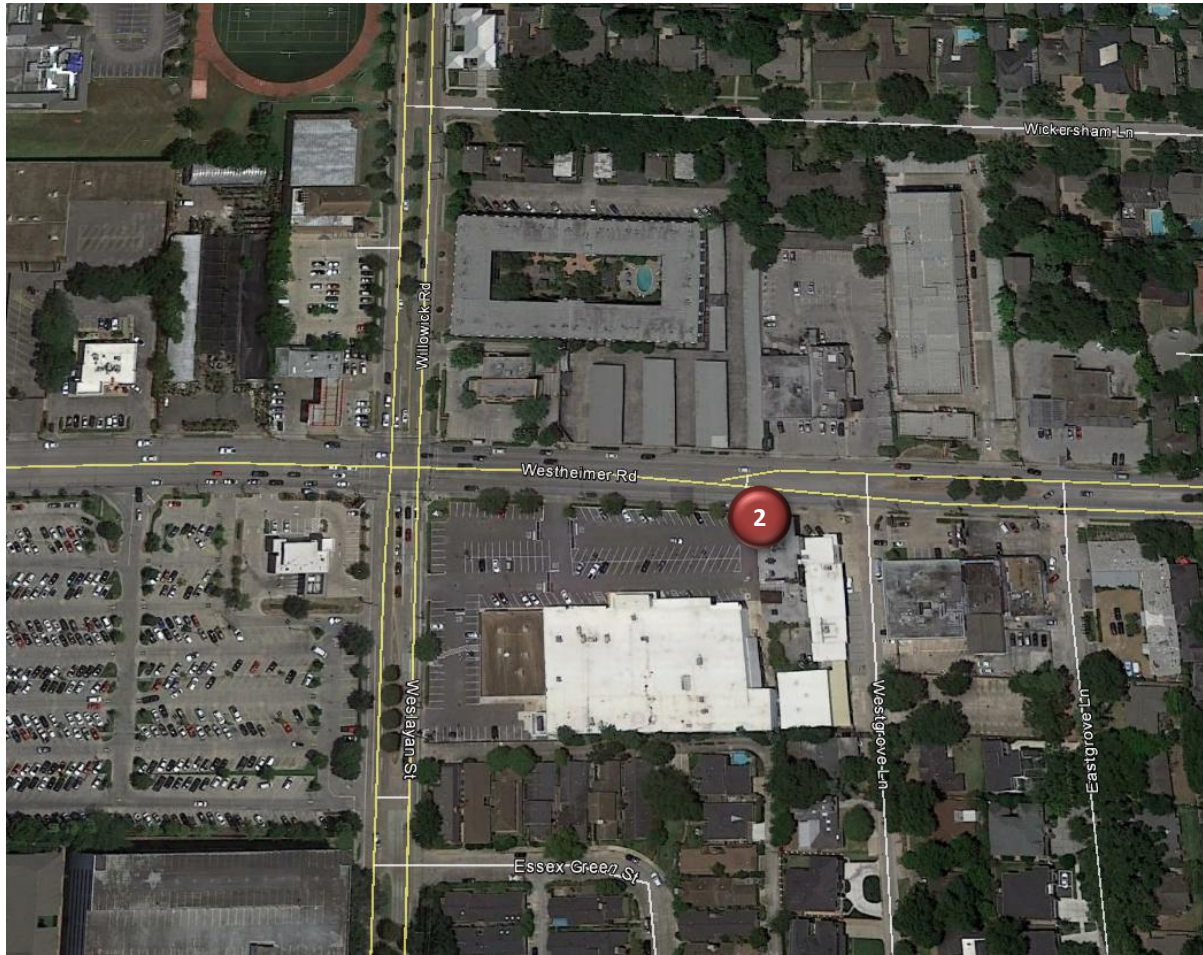
**Counter #2**

Westheimer Road Eastbound East of Wesleyan Street

Location Information		
Location Name	Westheimer Road Eastbound East of Wesleyan Street	
Location Description	Sidewalk along Westheimer Road Eastbound East of Wesleyan Street near Highland Village (City of Houston)	
Jurisdiction	City of Houston	
Agency Deployed	Houston-Galveston Area Council/Texas Transportation Institute	
GPS Coordinates	29°44'29.77"N, 95°26'24.95"W	
Surrounding Land Uses	North	Commercial/Retail, Multi-Family Residential, Single-Family Residential
	South	Commercial/Retail, Single-Family Residential, Multi-Family Residential
	East	Commercial/Retail, Single-Family Residential
	West	Commercial/Retail, Multi-Family Residential
What object was device secured to?	Utility Pole (In Front of <i>Real Patio Living</i> : 3737 Westheimer Road)	
Sidewalk Width	4'	
Buffer Width	4'	
Street Width	Four-Lane Divided Roadway	
Parallel Parking	No	
Landscaping or Trees	No	
Sidewalk Pavement Type	Concrete	
ADA Ramps	Yes	
Sidewalk Condition	Good	
Speed Limit	35 miles per hour	
Street Lighting	Yes	
Street Traffic Volume	28,278 (3639 Westheimer Road: 2011)	
Transit	Nearby (METRO Bus Stop 500' West on Westheimer Road Eastbound)	
Shade	No	
Have counts been collected by H-GAC at this location before?	No	
Notes	Counter #2 stopped collecting data before the other counters, at approximately 9:00 p.m. on Wednesday, December 23, 2015.	

Trends
<ul style="list-style-type: none"> <li>• There tends to be much higher usage on weekdays than during weekends.</li> <li>• On weekdays, usage peaks in the late afternoon (4:00 p.m. – 5:00 p.m.).</li> <li>• During weekends, usage is highest in the morning (9:00 a.m. – 12:00 p.m.) and late afternoon (4:00 p.m. – 5:00 p.m.).</li> <li>• Rain may affect usage, especially during weekends. The wettest day (Sunday, December 13: 1.78 inches of rain) had the least usage.</li> </ul>

**Location Information: Map**



**Location Information: Photos**



Image 3: Sidewalk along Westheimer Road Facing East



Image 4: Sidewalk along Westheimer Road Facing West

**Daily Usage**  
Westheimer Road Eastbound East of Wesleyan Street

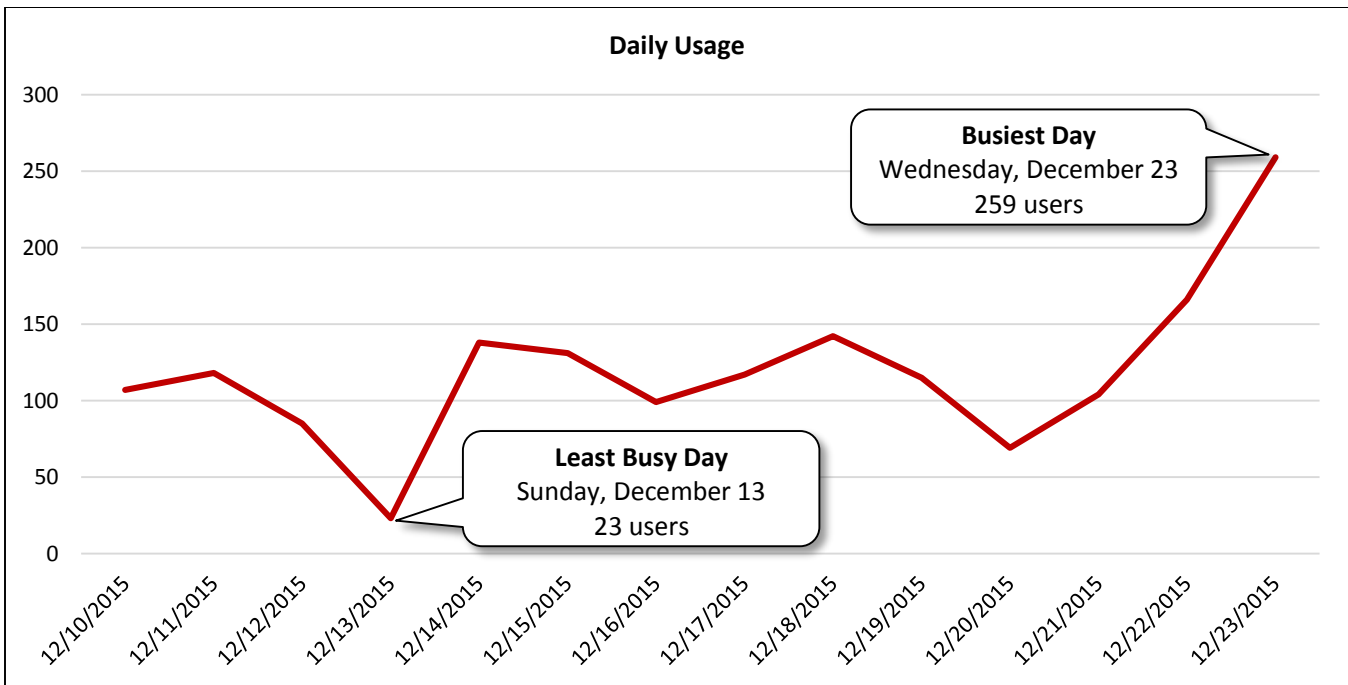
Date	Users	Select Weather Data*		
		High Temperature (°F)	Low Temperature (°F)	Precipitation (inches)
Thursday, December 10, 2015	107	80	62	0
Friday, December 11, 2015	118	84	69	0
Saturday, December 12, 2015	85	77	71	0.06
Sunday, December 13, 2015	23	75	50	1.78
Monday, December 14, 2015	138	75	51	0
Tuesday, December 15, 2015	131	75	59	0.13
Wednesday, December 16, 2015	99	73	51	1.14
Thursday, December 17, 2015	117	66	46	0
Friday, December 18, 2015	142	62	42	0
Saturday, December 19, 2015	115	64	46	0
Sunday, December 20, 2015	69	69	53	0
Monday, December 21, 2015	104	75	66	0.28
Tuesday, December 22, 2015	166	73	62	0.01
Wednesday, December 23, 2015	259	84	69	0

<b>Total</b>	1,673
<b>Average Daily Usage</b>	120
<b>Average Daily Usage (Weekday)</b>	138
<b>Average Daily Usage (Weekend)</b>	73

Notes
Christmas: Friday, December 25, 2015
New Year's Day: Friday, January 1, 2016
Houston Independent School District – Winter Break: Monday, December 21, 2015 – Monday, January 4, 2016

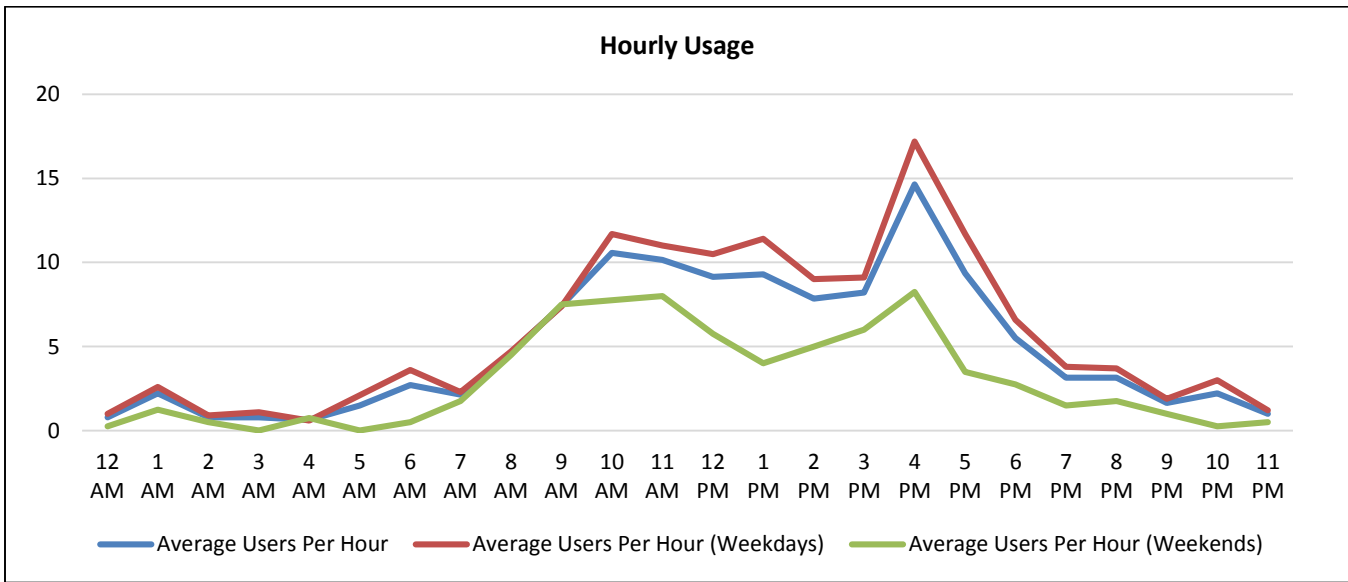
\*Weather conditions recorded at KSGR.

Note: Counter #2 stopped collecting data before the other counters, at approximately 9:00 p.m. on Wednesday, December 23, 2015.



**Hourly Usage**  
Westheimer Road Eastbound East of Wesleyan Street

Time of Day	Average Users Per Hour	Average Users Per Hour (Weekdays)	Average Users Per Hour (Weekends)
12:00 a.m.	0.8	1.0	0.3
1:00 a.m.	2.2	2.6	1.3
2:00 a.m.	0.8	0.9	0.5
3:00 a.m.	0.8	1.1	0.0
4:00 a.m.	0.6	0.6	0.8
5:00 a.m.	1.5	2.1	0.0
6:00 a.m.	2.7	3.6	0.5
7:00 a.m.	2.1	2.3	1.8
8:00 a.m.	4.6	4.7	4.5
9:00 a.m.	7.4	7.4	7.5
10:00 a.m.	10.6	11.7	7.8
11:00 a.m.	10.1	11.0	8.0
12:00 p.m.	9.1	10.5	5.8
1:00 p.m.	9.3	11.4	4.0
2:00 p.m.	7.9	9.0	5.0
3:00 p.m.	8.2	9.1	6.0
4:00 p.m.	14.6	17.2	8.3
5:00 p.m.	9.4	11.7	3.5
6:00 p.m.	5.5	6.6	2.8
7:00 p.m.	3.1	3.8	1.5
8:00 p.m.	3.1	3.7	1.8
9:00 p.m.	1.6	1.9	1.0
10:00 p.m.	2.2	3.0	0.3
11:00 p.m.	1.0	1.2	0.5



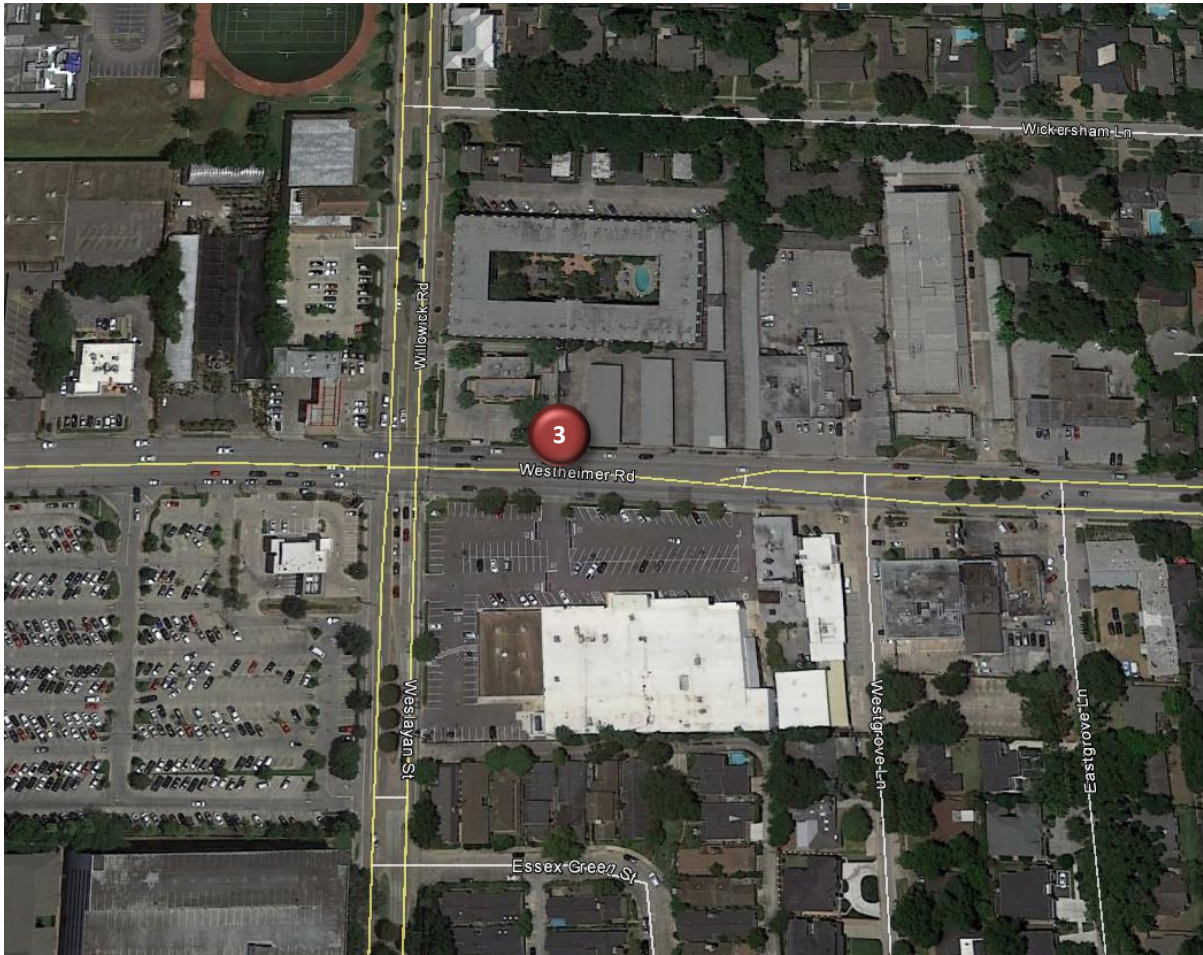
**Counter #3**

## Westheimer Road Westbound East of Wesleyan Street

Location Information		
Location Name	Westheimer Road Westbound East of Wesleyan Street	
Location Description	Sidewalk along Westheimer Road Westbound East of Wesleyan Street near Highland Village (City of Houston)	
Jurisdiction	City of Houston	
Agency Deployed	Houston-Galveston Area Council/Texas Transportation Institute	
GPS Coordinates	29°44'30.49"N, 95°26'27.73"W	
Surrounding Land Uses	North	Multi-Family Residential, Commercial/Retail, Single-Family Residential
	South	Commercial/Retail, Multi-Family Residential, Single-Family Residential
	East	Multi-Family Residential, Commercial/Retail, Single-Family Residential
	West	Commercial/Retail
What object was device secured to?	Utility Pole (Just East of <i>Cadence Bank</i> : 3754 Westheimer Road)	
Sidewalk Width	4'	
Buffer Width	4'	
Street Width	Four-Lane Divided Roadway	
Parallel Parking	No	
Landscaping or Trees	Yes	
Sidewalk Pavement Type	Concrete	
ADA Ramps	Yes	
Sidewalk Condition	Fair (Some Cracks and Debris)	
Speed Limit	35 miles per hour	
Street Lighting	Yes	
Street Traffic Volume	28,278 (3639 Westheimer: 2011)	
Transit	Nearby (METRO Bus Stop 100' West on Westheimer Road Westbound)	
Shade	No	
Have counts been collected by H-GAC at this location before?	No	

Trends
<ul style="list-style-type: none"> <li>• Usage tends to be higher on weekdays than during weekends.</li> <li>• On weekdays, usage peaks in the late afternoon (3:00 p.m. – 4:00 p.m.).</li> <li>• During weekends, usage is highest in the morning (9:00 a.m. – 11:00 a.m.) and late afternoon (3:00 p.m. – 5:00 p.m.).</li> </ul>

**Location Information: Map**



**Location Information: Photos**



Image 5: Sidewalk along Westheimer Road Facing East



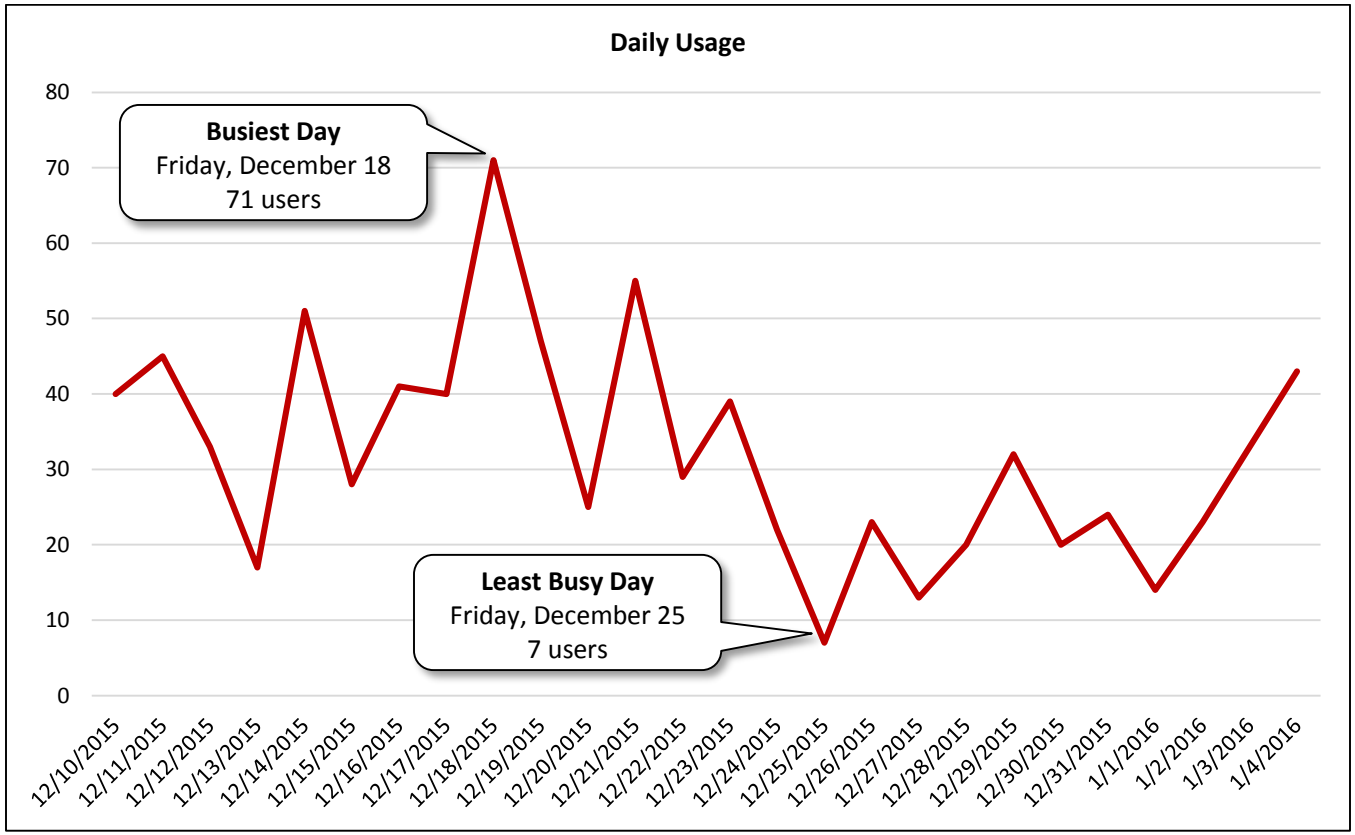
Image 6: Sidewalk along Westheimer Road Facing West

<b>Daily Usage</b>				
Westheimer Road Westbound East of Wesleyan Street				
Date	Users	Select Weather Data*		
		High Temperature (°F)	Low Temperature (°F)	Precipitation (inches)
Thursday, December 10, 2015	40	80	62	0
Friday, December 11, 2015	45	84	69	0
Saturday, December 12, 2015	33	77	71	0.06
Sunday, December 13, 2015	17	75	50	1.78
Monday, December 14, 2015	51	75	51	0
Tuesday, December 15, 2015	28	75	59	0.13
Wednesday, December 16, 2015	41	73	51	1.14
Thursday, December 17, 2015	40	66	46	0
Friday, December 18, 2015	71	62	42	0
Saturday, December 19, 2015	47	64	46	0
Sunday, December 20, 2015	25	69	53	0
Monday, December 21, 2015	55	75	66	0.28
Tuesday, December 22, 2015	29	73	62	0.01
Wednesday, December 23, 2015	39	84	69	0
Thursday, December 24, 2015	22	80	64	0
Friday, December 25, 2015	7	86	73	0
Saturday, December 26, 2015	23	78	73	0.02
Sunday, December 27, 2015	13	77	44	0.71
Monday, December 28, 2015	20	53	39	0.01
Tuesday, December 29, 2015	32	53	41	0
Wednesday, December 30, 2015	20	55	48	0
Thursday, December 31, 2015	24	53	48	0
Friday, January 1, 2016	14	50	46	0
Saturday, January 2, 2016	23	50	44	0.01
Sunday, January 3, 2016	33	62	42	0.02
Monday, January 4, 2016	43	62	41	0
<b>Total</b>	835			
<b>Average Daily Usage</b>	32			
<b>Average Daily Usage (Weekday)</b>	35			
<b>Average Daily Usage (Weekend)</b>	27			

Notes
Christmas: Friday, December 25, 2015 New Year's Day: Friday, January 1, 2016 Houston Independent School District – Winter Break: Monday, December 21, 2015 – Monday, January 4, 2016

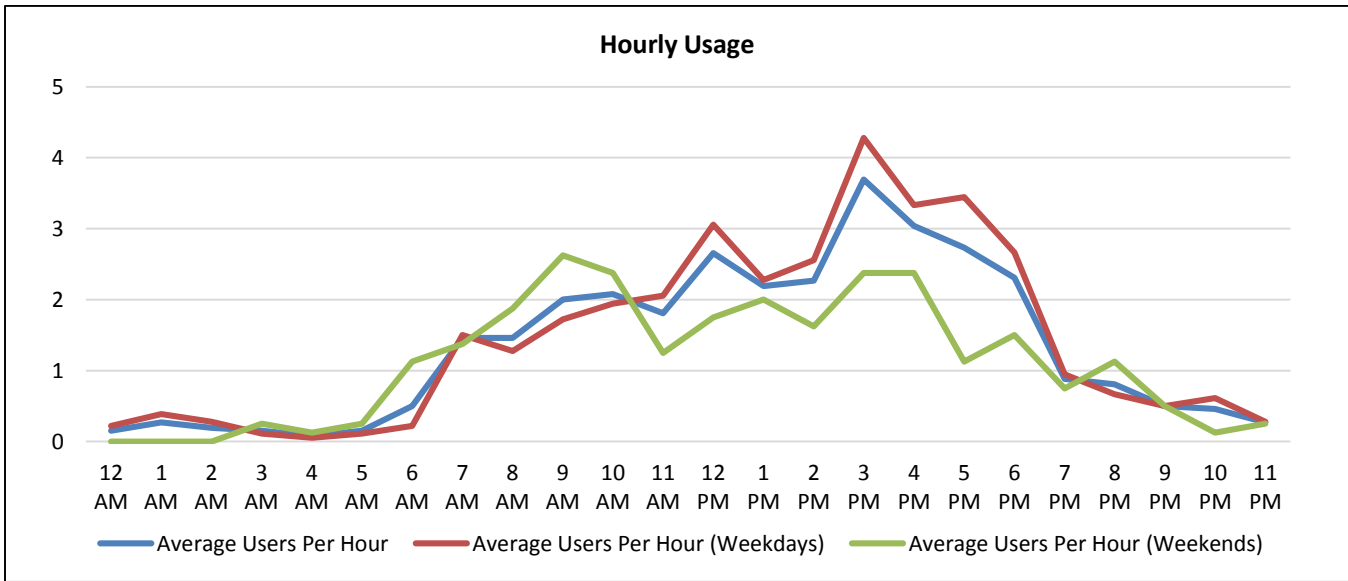
\*Weather conditions recorded at KMCJ.





**Hourly Usage**  
Westheimer Road Westbound East of Wesleyan Street

Time of Day	Average Users Per Hour	Average Users Per Hour (Weekdays)	Average Users Per Hour (Weekends)
12:00 a.m.	0.2	0.2	0.0
1:00 a.m.	0.3	0.4	0.0
2:00 a.m.	0.2	0.3	0.0
3:00 a.m.	0.2	0.1	0.3
4:00 a.m.	0.1	0.1	0.1
5:00 a.m.	0.2	0.1	0.3
6:00 a.m.	0.5	0.2	1.1
7:00 a.m.	1.5	1.5	1.4
8:00 a.m.	1.5	1.3	1.9
9:00 a.m.	2.0	1.7	2.6
10:00 a.m.	2.1	1.9	2.4
11:00 a.m.	1.8	2.1	1.3
12:00 p.m.	2.7	3.1	1.8
1:00 p.m.	2.2	2.3	2.0
2:00 p.m.	2.3	2.6	1.6
3:00 p.m.	3.7	4.3	2.4
4:00 p.m.	3.0	3.3	2.4
5:00 p.m.	2.7	3.4	1.1
6:00 p.m.	2.3	2.7	1.5
7:00 p.m.	0.9	0.9	0.8
8:00 p.m.	0.8	0.7	1.1
9:00 p.m.	0.5	0.5	0.5
10:00 p.m.	0.5	0.6	0.1
11:00 p.m.	0.3	0.3	0.3



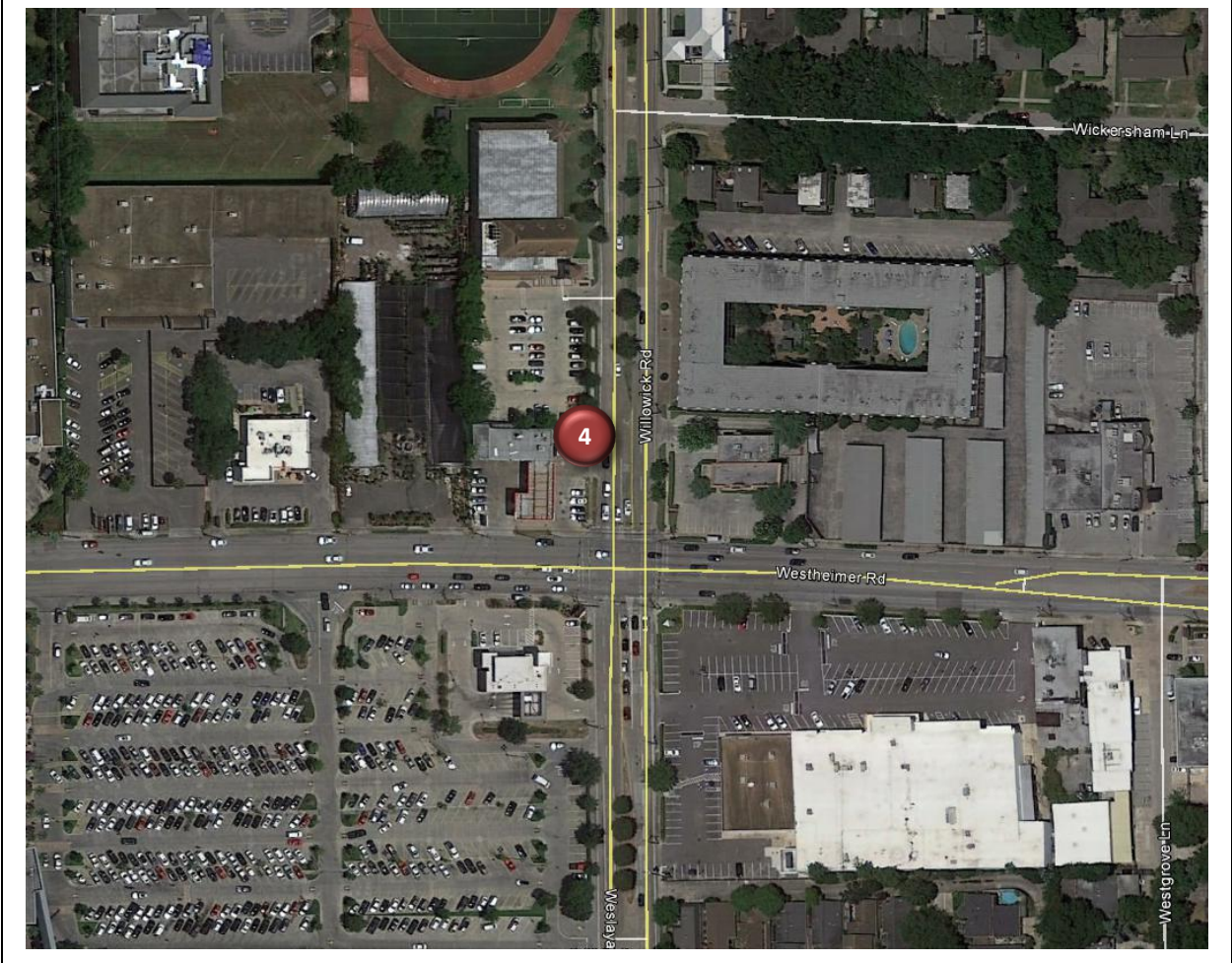
**Counter #4**

Willowick Road Southbound North of Westheimer Road

Location Information		
Location Name	Willowick Road Southbound North of Westheimer Road	
Location Description	Sidewalk along Willowick Road Southbound North of Westheimer Road near Highland Village (City of Houston)	
Jurisdiction	City of Houston	
Agency Deployed	Houston-Galveston Area Council/Texas Transportation Institute	
GPS Coordinates	29°44'32.36"N, 95°26'30.33"W	
Surrounding Land Uses	North	Institutional (Looscan Neighborhood Library and River Oaks Baptist School), Multi-Family Residential, Single-Family Residential
	South	Commercial/Retail
	East	Commercial/Retail, Multi-Family Residential
	West	Commercial/Retail
What object was device secured to?	Utility Pole (Adjacent to <i>Roberts Mobil Car Care Center</i> : 3802 Westheimer Road)	
Sidewalk Width	4'	
Buffer Width	3'	
Street Width	Four-Lane Divided Roadway	
Parallel Parking	No	
Landscaping or Trees	Yes	
Sidewalk Pavement Type	Concrete	
ADA Ramps	Yes	
Sidewalk Condition	Good	
Speed Limit	30 miles per hour	
Street Lighting	Yes	
Street Traffic Volume	15,492 (2300 Willowick Road: 2011)	
Transit	Nearby (METRO Bus Stop 230' West on Westheimer Road Westbound)	
Shade	Yes	
Have counts been collected by H-GAC at this location before?	No	

Trends
<ul style="list-style-type: none"> <li>• Usage tends to be higher on weekdays than during weekends.</li> <li>• On weekdays, usage remains high from midday through the afternoon (11:00 a.m. – 6:00 p.m.).</li> <li>• During weekends, usage is highest in the evening (7:00 p.m. – 8:00 p.m.).</li> <li>• Rain may affect usage, especially during weekends. The wettest day (Sunday, December 13: 1.78 inches of rain) had the least usage.</li> </ul>

**Location Information: Map**



**Location Information: Photos**



Image 7: Sidewalk along Willowick Road Facing North



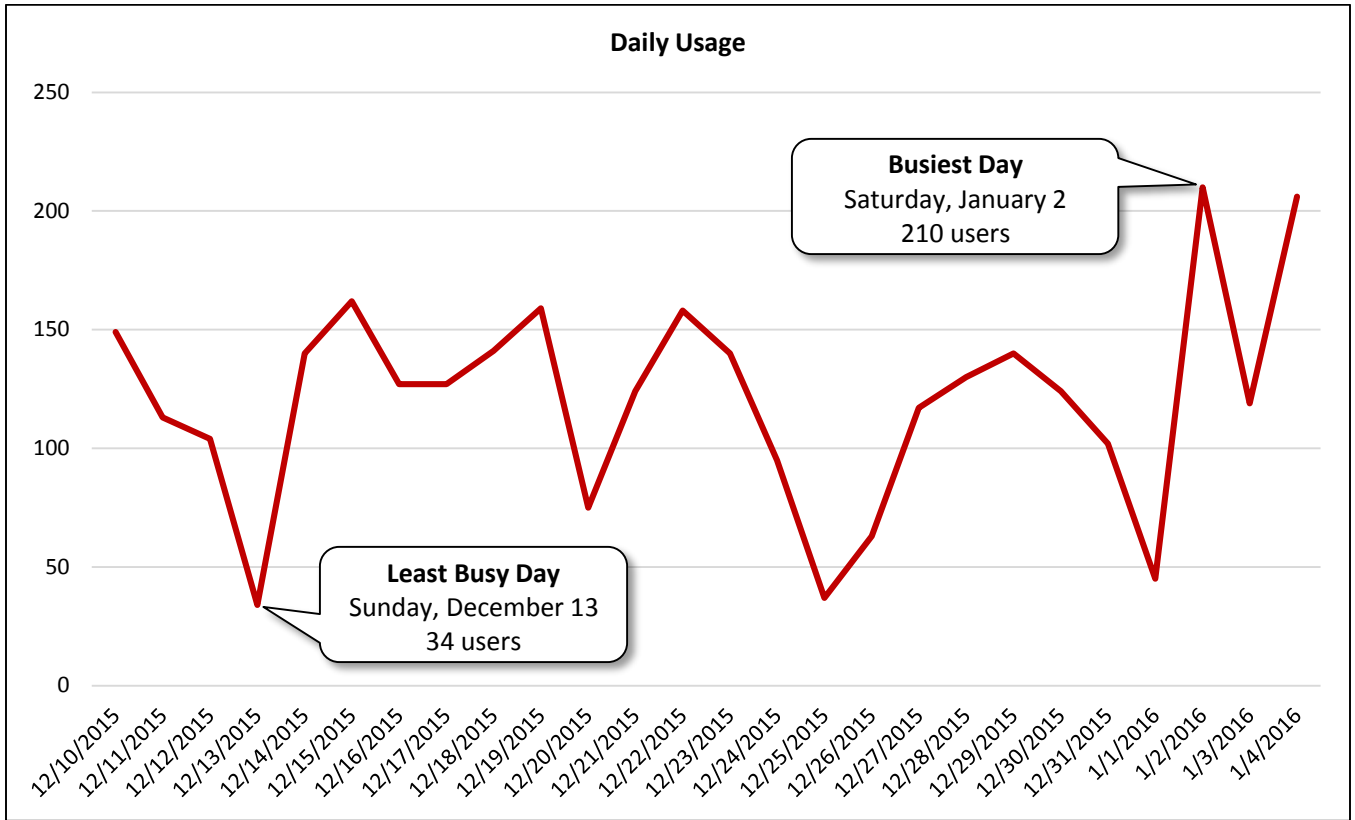
Image 8: Sidewalk along Willowick Road Facing South

<b>Daily Usage</b>				
Willowick Road Southbound North of Westheimer Road				
Date	Users	Select Weather Data*		
		High Temperature (°F)	Low Temperature (°F)	Precipitation (inches)
Thursday, December 10, 2015	149	80	62	0
Friday, December 11, 2015	113	84	69	0
Saturday, December 12, 2015	104	77	71	0.06
Sunday, December 13, 2015	34	75	50	1.78
Monday, December 14, 2015	140	75	51	0
Tuesday, December 15, 2015	162	75	59	0.13
Wednesday, December 16, 2015	127	73	51	1.14
Thursday, December 17, 2015	127	66	46	0
Friday, December 18, 2015	141	62	42	0
Saturday, December 19, 2015	159	64	46	0
Sunday, December 20, 2015	75	69	53	0
Monday, December 21, 2015	124	75	66	0.28
Tuesday, December 22, 2015	158	73	62	0.01
Wednesday, December 23, 2015	140	84	69	0
Thursday, December 24, 2015	95	80	64	0
Friday, December 25, 2015	37	86	73	0
Saturday, December 26, 2015	63	78	73	0.02
Sunday, December 27, 2015	117	77	44	0.71
Monday, December 28, 2015	130	53	39	0.01
Tuesday, December 29, 2015	140	53	41	0
Wednesday, December 30, 2015	124	55	48	0
Thursday, December 31, 2015	102	53	48	0
Friday, January 1, 2016	45	50	46	0
Saturday, January 2, 2016	210	50	44	0.01
Sunday, January 3, 2016	119	62	42	0.02
Monday, January 4, 2016	206	62	41	0
<b>Total</b>	3,141			
<b>Average Daily Usage</b>	121			
<b>Average Daily Usage (Weekday)</b>	126			
<b>Average Daily Usage (Weekend)</b>	110			

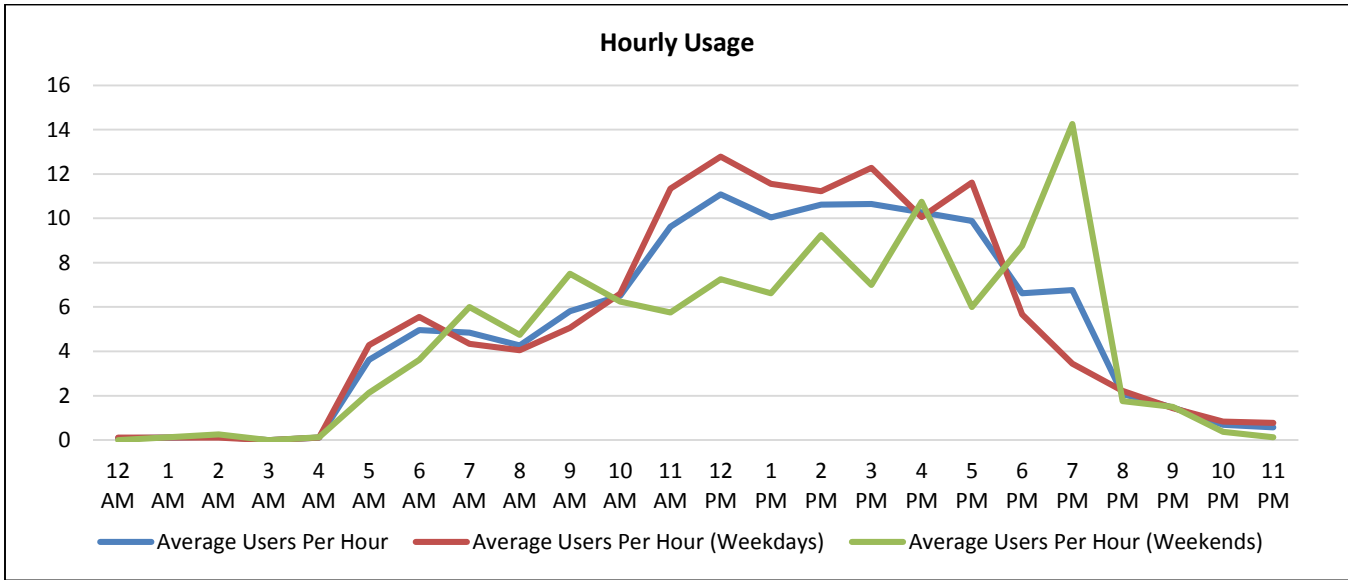
<b>Notes</b>	
Christmas: Friday, December 25, 2015	
New Year's Day: Friday, January 1, 2016	
Houston Independent School District – Winter Break:	
Monday, December 21, 2015 – Monday, January 4, 2016	

\*Weather conditions recorded at KMCJ.



**Hourly Usage**  
Willowick Road Southbound North of Westheimer Road

Time of Day	Average Users Per Hour	Average Users Per Hour (Weekdays)	Average Users Per Hour (Weekends)
12:00 a.m.	0.1	0.1	0.0
1:00 a.m.	0.1	0.1	0.1
2:00 a.m.	0.2	0.1	0.3
3:00 a.m.	0.0	0.0	0.0
4:00 a.m.	0.1	0.1	0.1
5:00 a.m.	3.6	4.3	2.1
6:00 a.m.	5.0	5.6	3.6
7:00 a.m.	4.8	4.3	6.0
8:00 a.m.	4.3	4.1	4.8
9:00 a.m.	5.8	5.1	7.5
10:00 a.m.	6.5	6.6	6.3
11:00 a.m.	9.6	11.3	5.8
12:00 p.m.	11.1	12.8	7.3
1:00 p.m.	10.0	11.6	6.6
2:00 p.m.	10.6	11.2	9.3
3:00 p.m.	10.7	12.3	7.0
4:00 p.m.	10.3	10.1	10.8
5:00 p.m.	9.9	11.6	6.0
6:00 p.m.	6.6	5.7	8.8
7:00 p.m.	6.8	3.4	14.3
8:00 p.m.	2.1	2.2	1.8
9:00 p.m.	1.5	1.4	1.5
10:00 p.m.	0.7	0.8	0.4
11:00 p.m.	0.6	0.8	0.1



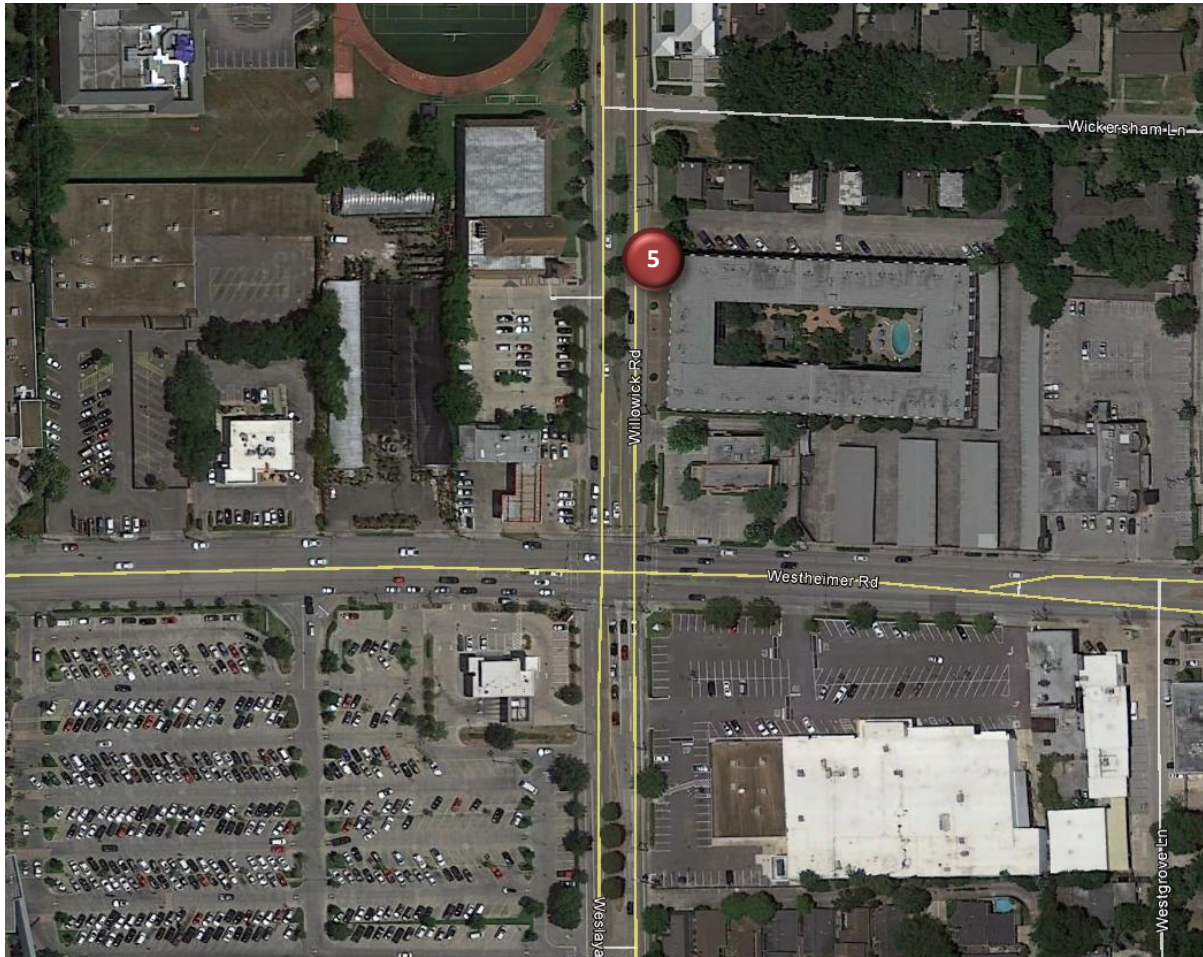
**Counter #5**

## Willowick Road Northbound North of Westheimer Road

Location Information		
Location Name	Willowick Road Northbound North of Westheimer Road	
Location Description	Sidewalk along Willowick Road Northbound North of Westheimer Road near Highland Village (City of Houston)	
Jurisdiction	City of Houston	
Agency Deployed	Houston-Galveston Area Council/Texas Transportation Institute	
GPS Coordinates	29°44'33.56"N, 95°26'29.56"W	
Surrounding Land Uses	North	Multi-Family Residential, Single-Family Residential, Institutional (River Oaks Baptist School)
	South	Multi-Family Residential, Commercial/Retail
	East	Multi-Family Residential, Single-Family Residential
	West	Institutional (Looscan Neighborhood Library), Commercial/Retail
What object was device secured to?	Sign Post (Pedestrian Crossing Ahead)	
Sidewalk Width	4'	
Buffer Width	3'	
Street Width	Four-Lane Divided Roadway	
Parallel Parking	No	
Landscaping or Trees	No	
Sidewalk Pavement Type	Concrete	
ADA Ramps	Yes	
Sidewalk Condition	Good	
Speed Limit	30 miles per hour	
Street Lighting	Yes	
Street Traffic Volume	15,492 (2300 Willowick Road: 2011)	
Transit	Nearby (METRO Bus Stop 300' South at Willowick Road/Westheimer Road Intersection)	
Shade	No	
Have counts been collected by H-GAC at this location before?	No	

Trends
<ul style="list-style-type: none"> <li>• Usage tends to be higher on weekdays than during weekends.</li> <li>• On weekdays, usage is highest in the morning (9:00 a.m. – 11:00 a.m.) and late afternoon (3:00 p.m. – 5:00 p.m.).</li> <li>• During weekends, usage remains relatively steady during daylight hours.</li> </ul>

Location Information: Map



Location Information: Photos



Image 9: Sidewalk along Willowick Road Facing North



Image 10: Sidewalk along Willowick Road Facing South

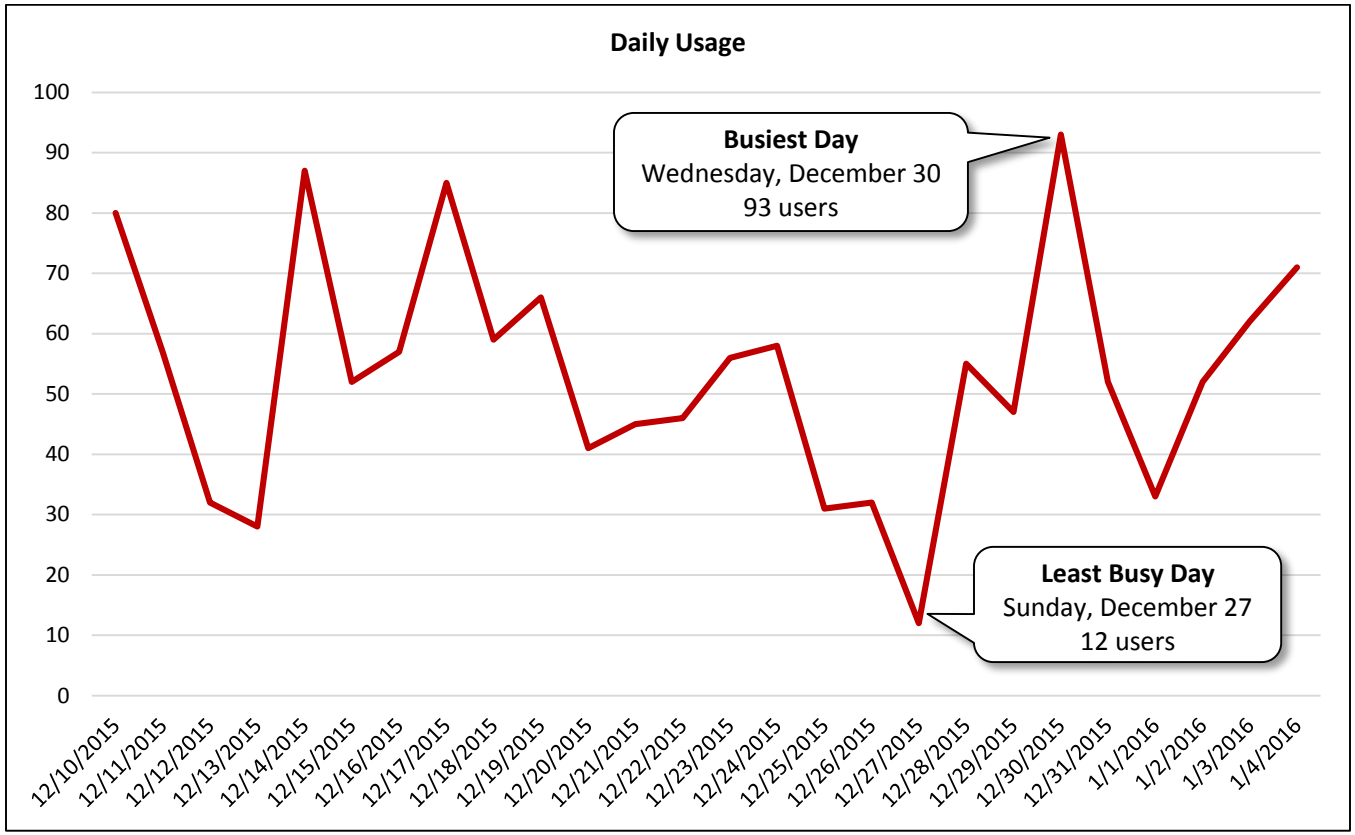


<b>Daily Usage</b>				
Willowick Road Northbound North of Westheimer Road				
Date	Users	Select Weather Data*		
		High Temperature (°F)	Low Temperature (°F)	Precipitation (inches)
Thursday, December 10, 2015	80	80	62	0
Friday, December 11, 2015	57	84	69	0
Saturday, December 12, 2015	32	77	71	0.06
Sunday, December 13, 2015	28	75	50	1.78
Monday, December 14, 2015	87	75	51	0
Tuesday, December 15, 2015	52	75	59	0.13
Wednesday, December 16, 2015	57	73	51	1.14
Thursday, December 17, 2015	85	66	46	0
Friday, December 18, 2015	59	62	42	0
Saturday, December 19, 2015	66	64	46	0
Sunday, December 20, 2015	41	69	53	0
Monday, December 21, 2015	45	75	66	0.28
Tuesday, December 22, 2015	46	73	62	0.01
Wednesday, December 23, 2015	56	84	69	0
Thursday, December 24, 2015	58	80	64	0
Friday, December 25, 2015	31	86	73	0
Saturday, December 26, 2015	32	78	73	0.02
Sunday, December 27, 2015	12	77	44	0.71
Monday, December 28, 2015	55	53	39	0.01
Tuesday, December 29, 2015	47	53	41	0
Wednesday, December 30, 2015	93	55	48	0
Thursday, December 31, 2015	52	53	48	0
Friday, January 1, 2016	33	50	46	0
Saturday, January 2, 2016	52	50	44	0.01
Sunday, January 3, 2016	62	62	42	0.02
Monday, January 4, 2016	71	62	41	0
<b>Total</b>	1,389			
<b>Average Daily Usage</b>	53			
<b>Average Daily Usage (Weekday)</b>	59			
<b>Average Daily Usage (Weekend)</b>	41			

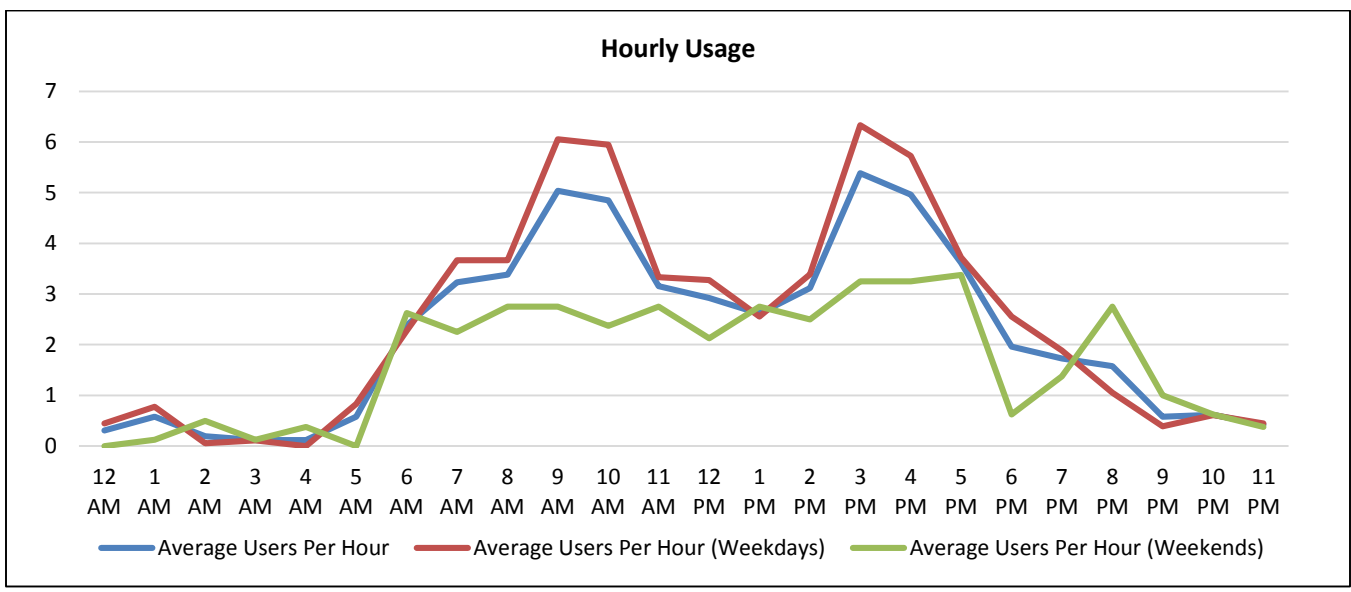
  

Notes
Christmas: Friday, December 25, 2015 New Year's Day: Friday, January 1, 2016 Houston Independent School District – Winter Break: Monday, December 21, 2015 – Monday, January 4, 2016

\*Weather conditions recorded at KMCJ.



<b>Hourly Usage</b>			
Willowick Road Northbound North of Westheimer Road			
<b>Time of Day</b>	<b>Average Users Per Hour</b>	<b>Average Users Per Hour (Weekdays)</b>	<b>Average Users Per Hour (Weekends)</b>
12:00 a.m.	0.3	0.4	0.0
1:00 a.m.	0.6	0.8	0.1
2:00 a.m.	0.2	0.1	0.5
3:00 a.m.	0.1	0.1	0.1
4:00 a.m.	0.1	0.0	0.4
5:00 a.m.	0.6	0.8	0.0
6:00 a.m.	2.4	2.3	2.6
7:00 a.m.	3.2	3.7	2.3
8:00 a.m.	3.4	3.7	2.8
9:00 a.m.	5.0	6.1	2.8
10:00 a.m.	4.8	5.9	2.4
11:00 a.m.	3.2	3.3	2.8
12:00 p.m.	2.9	3.3	2.1
1:00 p.m.	2.6	2.6	2.8
2:00 p.m.	3.1	3.4	2.5
3:00 p.m.	5.4	6.3	3.3
4:00 p.m.	5.0	5.7	3.3
5:00 p.m.	3.6	3.7	3.4
6:00 p.m.	2.0	2.6	0.6
7:00 p.m.	1.7	1.9	1.4
8:00 p.m.	1.6	1.1	2.8
9:00 p.m.	0.6	0.4	1.0
10:00 p.m.	0.6	0.6	0.6
11:00 p.m.	0.4	0.4	0.4



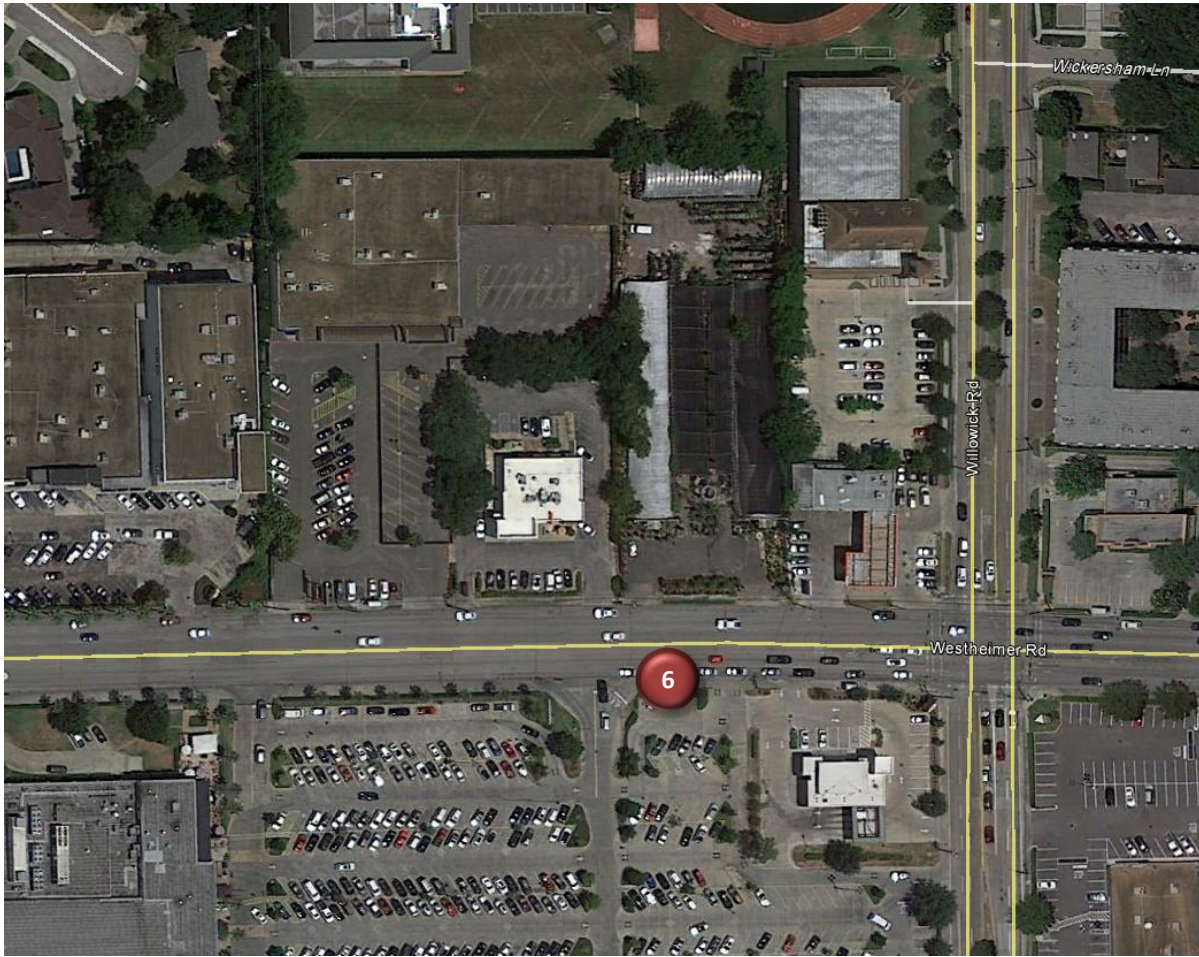
**Counter #6**

Westheimer Road Eastbound West of Wesleyan Street

Location Information	
Location Name	Westheimer Road Eastbound West of Wesleyan Street
Location Description	Sidewalk along Westheimer Road Eastbound West of Wesleyan Street near Highland Village (City of Houston)
Jurisdiction	City of Houston
Agency Deployed	Houston-Galveston Area Council/Texas Transportation Institute
GPS Coordinates	29°44'29.99"N, 95°26'33.10"W
Surrounding Land Uses	North   Commercial/Retail
	South   Commercial/Retail
	East   Commercial/Retail, Multi-Family Residential
	West   Commercial/Retail
What object was device secured to?	Sign Post (Bicycles Crossing Ahead)
Sidewalk Width	6'
Buffer Width	None
Street Width	Six-Lane Undivided Roadway
Parallel Parking	No
Landscaping or Trees	Yes
Sidewalk Pavement Type	Concrete
ADA Ramps	Yes
Sidewalk Condition	Good
Speed Limit	35 miles per hour
Street Lighting	Yes
Street Traffic Volume	28,278 (3639 Westheimer Road: 2011)
Transit	Nearby (METRO Bus Stop 220' West along Westheimer Road Eastbound)
Shade	No
Have counts been collected by H-GAC at this location before?	No

Trends
<ul style="list-style-type: none"> <li>• Usage tends to be higher on weekdays than during weekends.</li> <li>• On weekdays, usage peaks in the early afternoon (12:00 p.m. – 3:00 p.m.).</li> <li>• During weekends, usage peaks in the late afternoon (3:00 p.m. – 5:00 p.m.).</li> <li>• Rain may affect usage, especially during weekends. The wettest day (Sunday, December 13: 1.78 inches of rain) had the least usage.</li> </ul>

**Location Information: Map**



**Location Information: Photos**



Image 11: Sidewalk along Westheimer Road Facing East



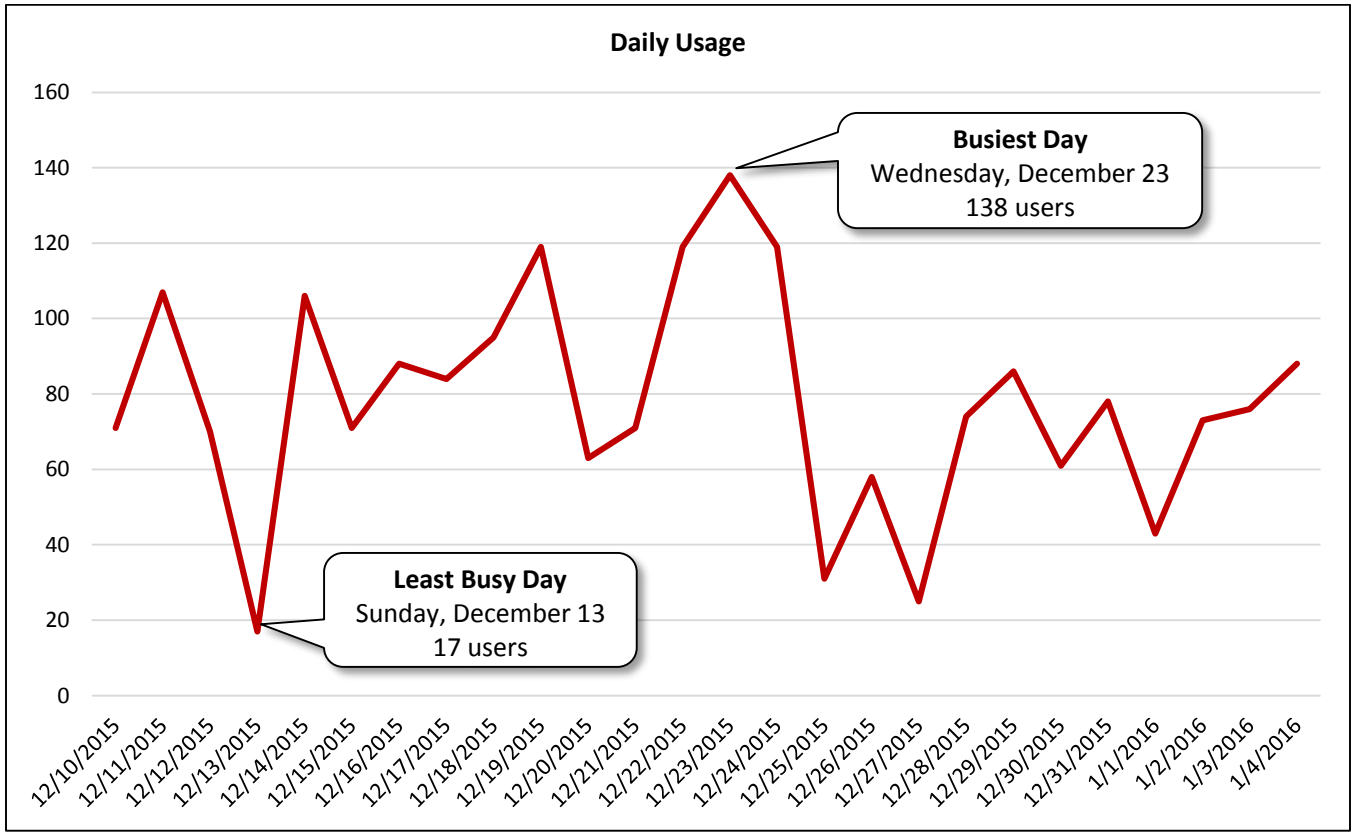
Image 12: Sidewalk along Westheimer Road Facing West

<b>Daily Usage</b>				
Westheimer Road Eastbound West of Wesleyan Street				
Date	Users	Select Weather Data*		
		High Temperature (°F)	Low Temperature (°F)	Precipitation (inches)
Thursday, December 10, 2015	71	80	62	0
Friday, December 11, 2015	107	84	69	0
Saturday, December 12, 2015	70	77	71	0.06
Sunday, December 13, 2015	17	75	50	1.78
Monday, December 14, 2015	106	75	51	0
Tuesday, December 15, 2015	71	75	59	0.13
Wednesday, December 16, 2015	88	73	51	1.14
Thursday, December 17, 2015	84	66	46	0
Friday, December 18, 2015	95	62	42	0
Saturday, December 19, 2015	119	64	46	0
Sunday, December 20, 2015	63	69	53	0
Monday, December 21, 2015	71	75	66	0.28
Tuesday, December 22, 2015	119	73	62	0.01
Wednesday, December 23, 2015	138	84	69	0
Thursday, December 24, 2015	119	80	64	0
Friday, December 25, 2015	31	86	73	0
Saturday, December 26, 2015	58	78	73	0.02
Sunday, December 27, 2015	25	77	44	0.71
Monday, December 28, 2015	74	53	39	0.01
Tuesday, December 29, 2015	86	53	41	0
Wednesday, December 30, 2015	61	55	48	0
Thursday, December 31, 2015	78	53	48	0
Friday, January 1, 2016	43	50	46	0
Saturday, January 2, 2016	73	50	44	0.01
Sunday, January 3, 2016	76	62	42	0.02
Monday, January 4, 2016	88	62	41	0
<b>Total</b>	2,031			
<b>Average Daily Usage</b>	78			
<b>Average Daily Usage (Weekday)</b>	85			
<b>Average Daily Usage (Weekend)</b>	63			

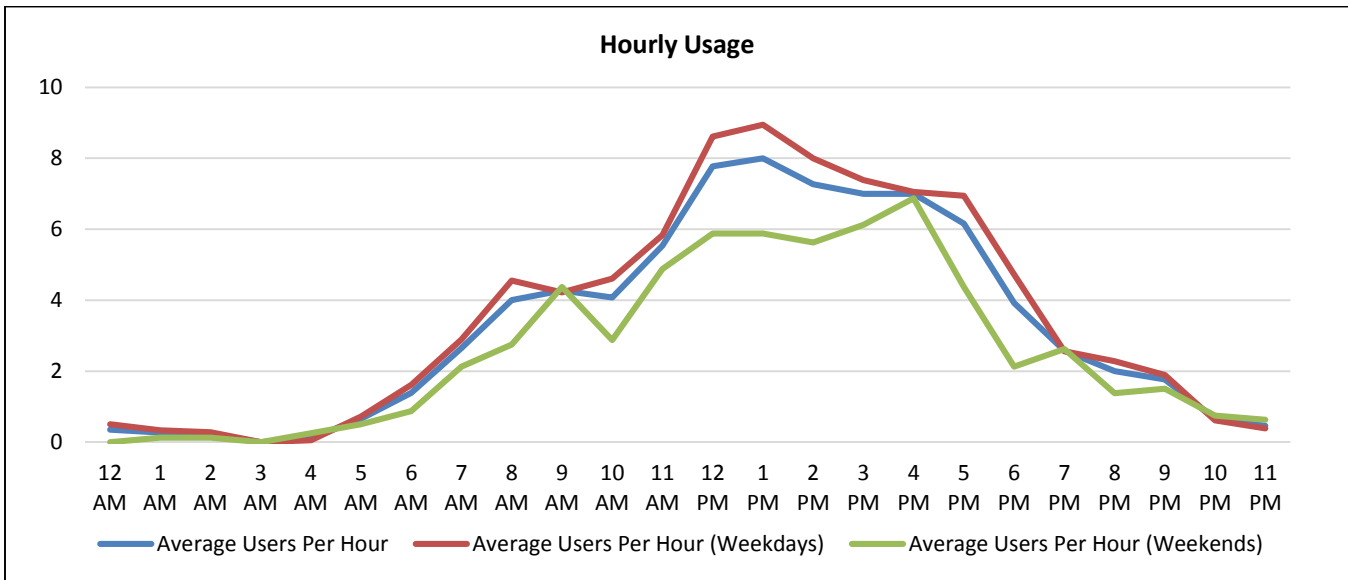
Notes
Christmas: Friday, December 25, 2015 New Year's Day: Friday, January 1, 2016 Houston Independent School District – Winter Break: Monday, December 21, 2015 – Monday, January 4, 2016

\*Weather conditions recorded at KMCJ.



**Hourly Usage**  
Westheimer Road Eastbound West of Wesleyan Street

Time of Day	Average Users Per Hour	Average Users Per Hour (Weekdays)	Average Users Per Hour (Weekends)
12:00 a.m.	0.3	0.5	0.0
1:00 a.m.	0.3	0.3	0.1
2:00 a.m.	0.2	0.3	0.1
3:00 a.m.	0.0	0.0	0.0
4:00 a.m.	0.1	0.1	0.3
5:00 a.m.	0.7	0.7	0.5
6:00 a.m.	1.4	1.6	0.9
7:00 a.m.	2.7	2.9	2.1
8:00 a.m.	4.0	4.6	2.8
9:00 a.m.	4.3	4.2	4.4
10:00 a.m.	4.1	4.6	2.9
11:00 a.m.	5.5	5.8	4.9
12:00 p.m.	7.8	8.6	5.9
1:00 p.m.	8.0	8.9	5.9
2:00 p.m.	7.3	8.0	5.6
3:00 p.m.	7.0	7.4	6.1
4:00 p.m.	7.0	7.1	6.9
5:00 p.m.	6.2	6.9	4.4
6:00 p.m.	3.9	4.7	2.1
7:00 p.m.	2.6	2.6	2.6
8:00 p.m.	2.0	2.3	1.4
9:00 p.m.	1.8	1.9	1.5
10:00 p.m.	0.7	0.6	0.8
11:00 p.m.	0.5	0.4	0.6



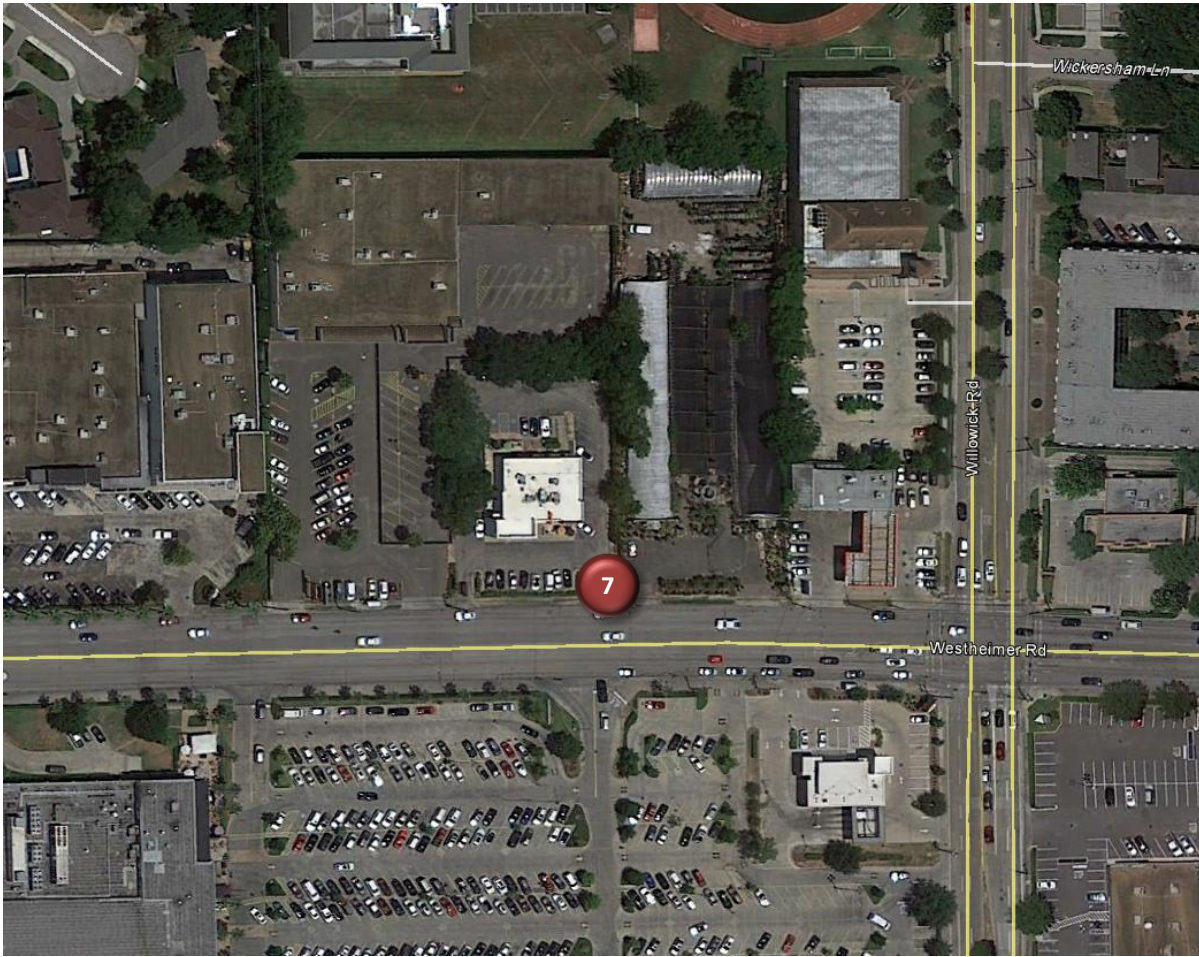


**Counter #7**

Westheimer Road Westbound West of Wesleyan Street

Location Information		
Location Name	Westheimer Road Westbound West of Wesleyan Street	
Location Description	Sidewalk along Westheimer Road Westbound West of Wesleyan Street near Highland Village (Highland Village)	
Jurisdiction	City of Houston	
Agency Deployed	Houston-Galveston Area Council/Texas Transportation Institute	
GPS Coordinates	29°44'30.66"N, 95°26'33.51"W	
Surrounding Land Uses	North	Commercial/Retail
	South	Commercial/Retail
	East	Commercial/Retail, Multi-Family Residential
	West	Commercial/Retail
What object was device secured to?	Utility Pole	
Sidewalk Width	4'	
Buffer Width	3'	
Street Width	Six-Lane Undivided Roadway	
Parallel Parking	No	
Landscaping or Trees	No	
Sidewalk Pavement Type	Concrete	
ADA Ramps	No	
Sidewalk Condition	Fair (Some Cracking)	
Speed Limit	35 miles per hour	
Street Lighting	Yes	
Street Traffic Volume	28,278 (3639 Westheimer Road: 2011)	
Transit	Nearby (METRO Bus Stop 175' East at Westheimer Road/Wesleyan Street)	
Shade	No	
Have counts been collected by H-GAC at this location before?	No	
Notes	Counter #7 malfunctioned and did not collect data during the deployment period.	

**Location Information: Map**



**Location Information: Photos**



Image 13: Sidewalk along Westheimer Road Facing East



Image 14: Sidewalk along Westheimer Road Facing West

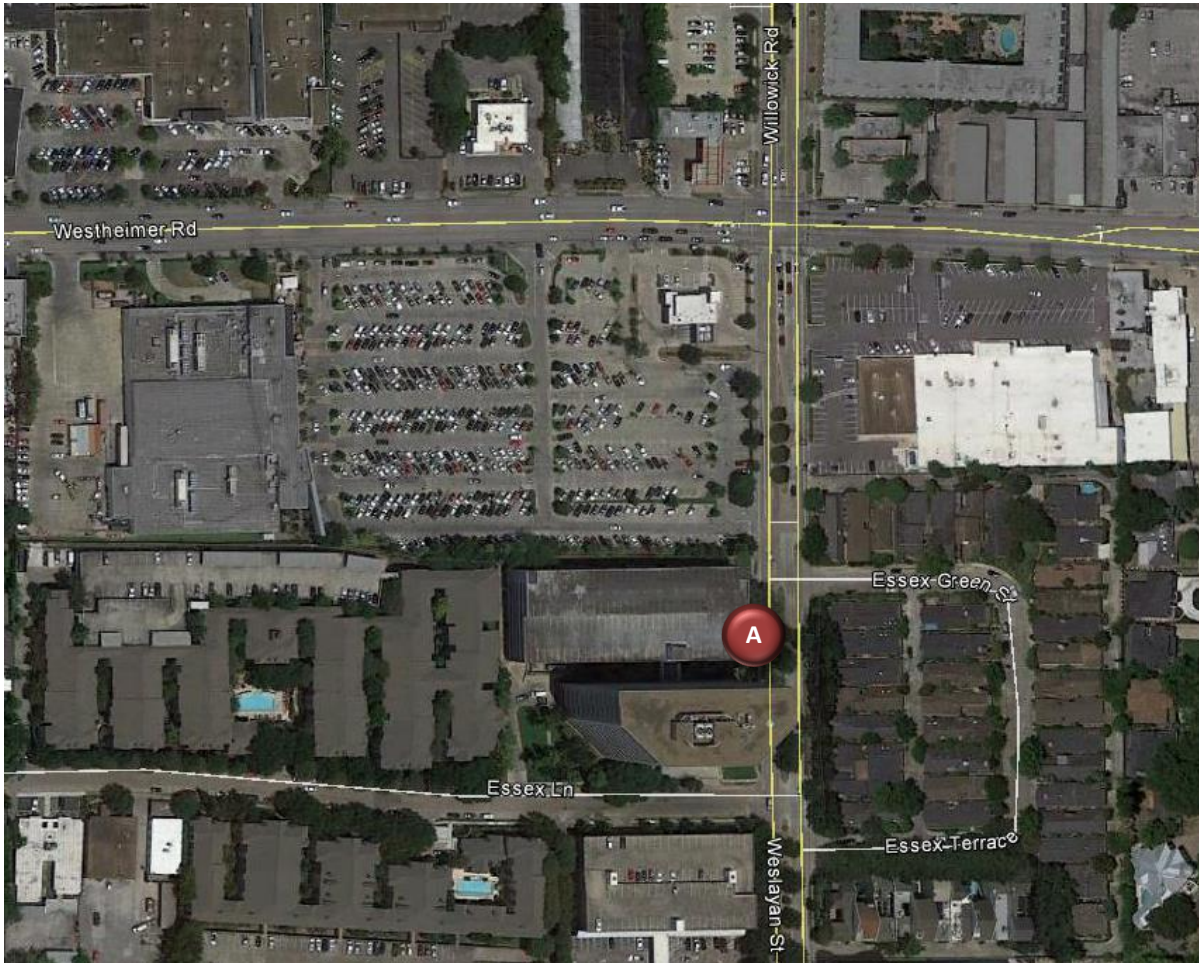
**Counter A**

Weslayan Street Southbound South of Westheimer Road

Location Information		
Location Name	Weslayan Street Southbound South of Westheimer Road	
Location Description	Sidewalk along Weslayan Street Southbound South of Westheimer Road near Highland Village (City of Houston)	
Jurisdiction	City of Houston	
Agency Deployed	Houston-Galveston Area Council/Texas Transportation Institute	
GPS Coordinates	29°44'24.49"N, 95°26'30.41"W	
Surrounding Land Uses	North	Commercial/Retail, Multi-Family Residential
	South	Office, Multi-Family Residential
	East	Multi-Family Residential
	West	Office
What object was device secured to?	Light Post	
Sidewalk Width	4'	
Buffer Width	4.5'	
Street Width	Four-Lane Divided Roadway	
Parallel Parking	No	
Landscaping or Trees	Yes	
Sidewalk Pavement Type	Concrete	
ADA Ramps	Yes	
Sidewalk Condition	Good	
Speed Limit	35 miles per hour	
Street Lighting	Yes	
Street Traffic Volume	24,617 (2700 Weslayan Street: 2013)	
Transit	Nearby (METRO Bus Stop 150' South at Weslayan Street/Essex Lane Intersection)	
Shade	Yes	
Have counts been collected by H-GAC at this location before?	No	

Trends
<ul style="list-style-type: none"> <li>• Usage tends to be higher on weekdays than during weekends.</li> <li>• On weekdays, usage is highest midday (12:00 p.m. – 1:00 p.m.).</li> <li>• During weekends, usage is highest in the late morning (10:00 a.m. – 11:00 a.m.) and late afternoon (2:00 p.m. – 6:00 p.m.).</li> <li>• Rain may affect usage, especially during weekends. The two wettest days (Sunday, December 13: 1.78 inches of rain and Sunday, December 27: 0.71 inches of rain) had the least usage.</li> </ul>

**Location Information: Map**



**Location Information: Photos**



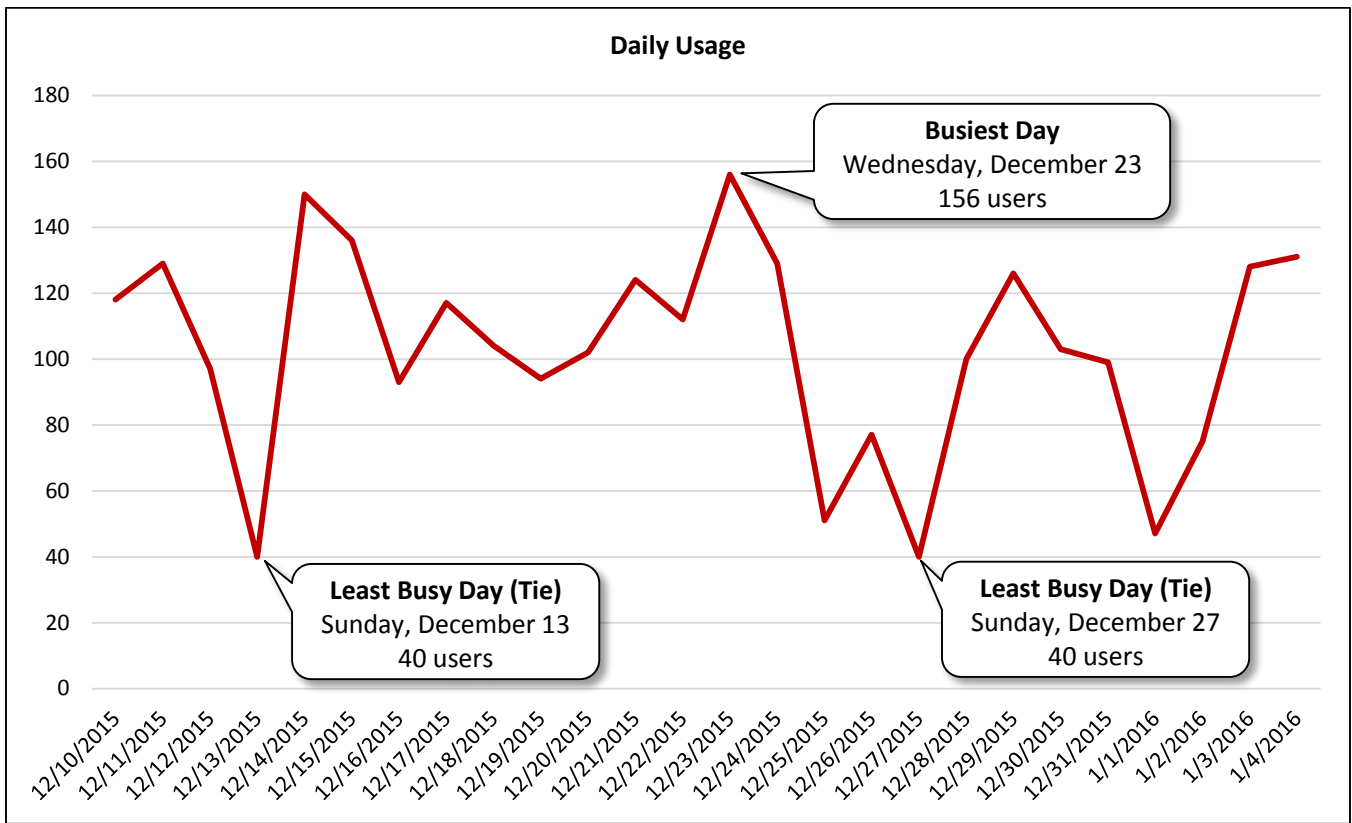
Image 15: Sidewalk along Wesleyan Street Facing North



Image 16: Sidewalk along Wesleyan Street Facing South

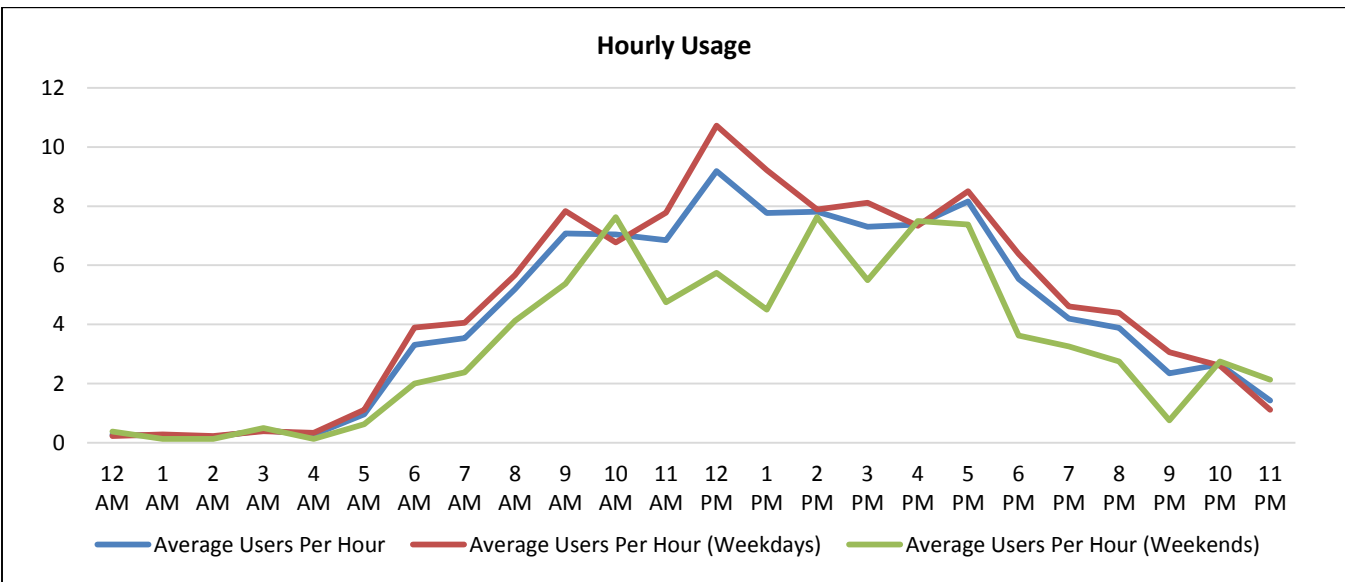
<b>Daily Usage</b>				
Weslayan Street Southbound South of Westheimer Road				
Date	Users	Select Weather Data*		
		High Temperature (°F)	Low Temperature (°F)	Precipitation (inches)
Thursday, December 10, 2015	118	80	62	0
Friday, December 11, 2015	129	84	69	0
Saturday, December 12, 2015	97	77	71	0.06
Sunday, December 13, 2015	40	75	50	1.78
Monday, December 14, 2015	150	75	51	0
Tuesday, December 15, 2015	136	75	59	0.13
Wednesday, December 16, 2015	93	73	51	1.14
Thursday, December 17, 2015	117	66	46	0
Friday, December 18, 2015	104	62	42	0
Saturday, December 19, 2015	94	64	46	0
Sunday, December 20, 2015	102	69	53	0
Monday, December 21, 2015	124	75	66	0.28
Tuesday, December 22, 2015	112	73	62	0.01
Wednesday, December 23, 2015	156	84	69	0
Thursday, December 24, 2015	129	80	64	0
Friday, December 25, 2015	51	86	73	0
Saturday, December 26, 2015	77	78	73	0.02
Sunday, December 27, 2015	40	77	44	0.71
Monday, December 28, 2015	100	53	39	0.01
Tuesday, December 29, 2015	126	53	41	0
Wednesday, December 30, 2015	103	55	48	0
Thursday, December 31, 2015	99	53	48	0
Friday, January 1, 2016	47	50	46	0
Saturday, January 2, 2016	75	50	44	0.01
Sunday, January 3, 2016	128	62	42	0.02
Monday, January 4, 2016	131	62	41	0
<b>Total</b>	2,678			
<b>Average Daily Usage</b>	103			
<b>Average Daily Usage (Weekday)</b>	113			
<b>Average Daily Usage (Weekend)</b>	82			
		<b>Notes</b>		
		Christmas: Friday, December 25, 2015 New Year's Day: Friday, January 1, 2016 Houston Independent School District – Winter Break: Monday, December 21, 2015 – Monday, January 4, 2016		

\*Weather conditions recorded at KMCJ.



**Hourly Usage**  
Weslayan Street Southbound South of Westheimer Road

Time of Day	Average Users Per Hour	Average Users Per Hour (Weekdays)	Average Users Per Hour (Weekends)
12:00 a.m.	0.3	0.2	0.4
1:00 a.m.	0.2	0.3	0.1
2:00 a.m.	0.2	0.2	0.1
3:00 a.m.	0.4	0.4	0.5
4:00 a.m.	0.3	0.3	0.1
5:00 a.m.	1.0	1.1	0.6
6:00 a.m.	3.3	3.9	2.0
7:00 a.m.	3.5	4.1	2.4
8:00 a.m.	5.2	5.7	4.1
9:00 a.m.	7.1	7.8	5.4
10:00 a.m.	7.0	6.8	7.6
11:00 a.m.	6.8	7.8	4.8
12:00 p.m.	9.2	10.7	5.8
1:00 p.m.	7.8	9.2	4.5
2:00 p.m.	7.8	7.9	7.6
3:00 p.m.	7.3	8.1	5.5
4:00 p.m.	7.4	7.3	7.5
5:00 p.m.	8.2	8.5	7.4
6:00 p.m.	5.5	6.4	3.6
7:00 p.m.	4.2	4.6	3.3
8:00 p.m.	3.9	4.4	2.8
9:00 p.m.	2.3	3.1	0.8
10:00 p.m.	2.7	2.6	2.8
11:00 p.m.	1.4	1.1	2.1



**Counter B**

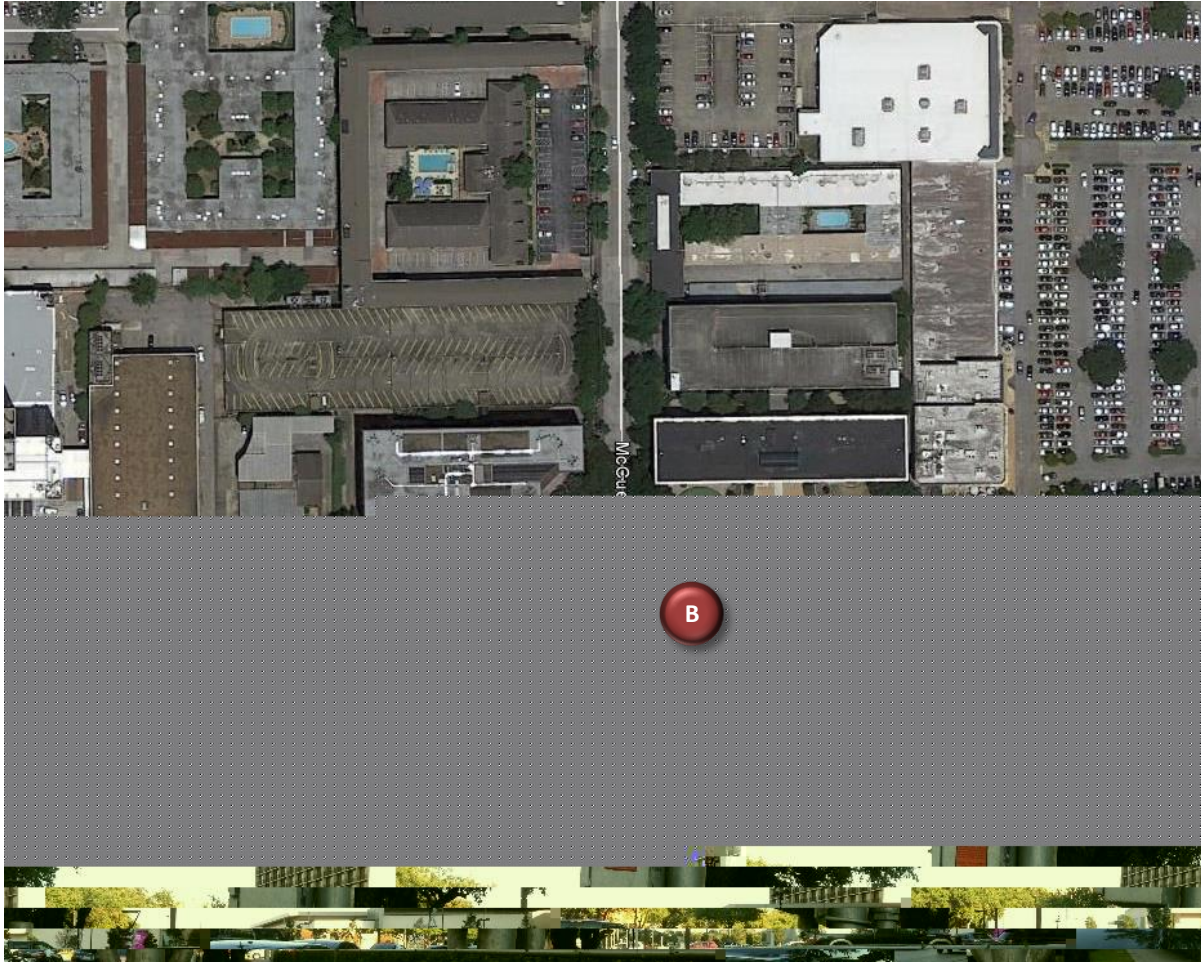
## Westheimer Road Eastbound East of McCue Road

Location Information		
Location Name	Westheimer Road Eastbound East of McCue Road	
Location Description	Sidewalk along Westheimer Road Eastbound East of McCue Road near The Galleria	
Jurisdiction	City of Houston	
Agency Deployed	Houston-Galveston Area Council/Texas Transportation Institute	
GPS Coordinates	29°44'26.00"N, 95°27'50.51"W	
Surrounding Land Uses	North	Office, Hotel, Multi-Family Residential
	South	Commercial/Retail
	East	Commercial/Retail, Office
	West	Commercial/Retail, Office, Hotel
What object was device secured to?	Utility Post	
Sidewalk Width	6'	
Buffer Width	9'	
Street Width	Seven-Lane Divided Roadway	
Parallel Parking	No	
Landscaping or Trees	Yes	
Sidewalk Pavement Type	Concrete	
ADA Ramps	Yes	
Sidewalk Condition	Good	
Speed Limit	35 miles per hour	
Street Lighting	Yes	
Street Traffic Volume	64,499 (5000 Westheimer Road: 2011)	
Transit	Nearby (METRO Bus Stop 160' West along Westheimer Road Westbound at McCue Road)	
Shade	Yes	
Have counts been collected by H-GAC at this location before?	No	
Notes	Counter B stopped collecting data before the other counters, at approximately 9:45 p.m. on Friday, January 1, 2016.	

Trends
<ul style="list-style-type: none"> <li>• Usage tends to be higher during weekends than on weekdays.</li> <li>• On weekdays, usage increases as the day progresses, peaking in the late afternoon (3:00 p.m. – 6:00 p.m.).</li> <li>• During weekends, usage increases as the day progresses, peaking in the late afternoon (4:00 p.m. – 5:00 p.m.).</li> </ul>



**Location Information: Map**



**Location Information: Photos**

Image 17: Sidewalk along Westheimer Road Facing East

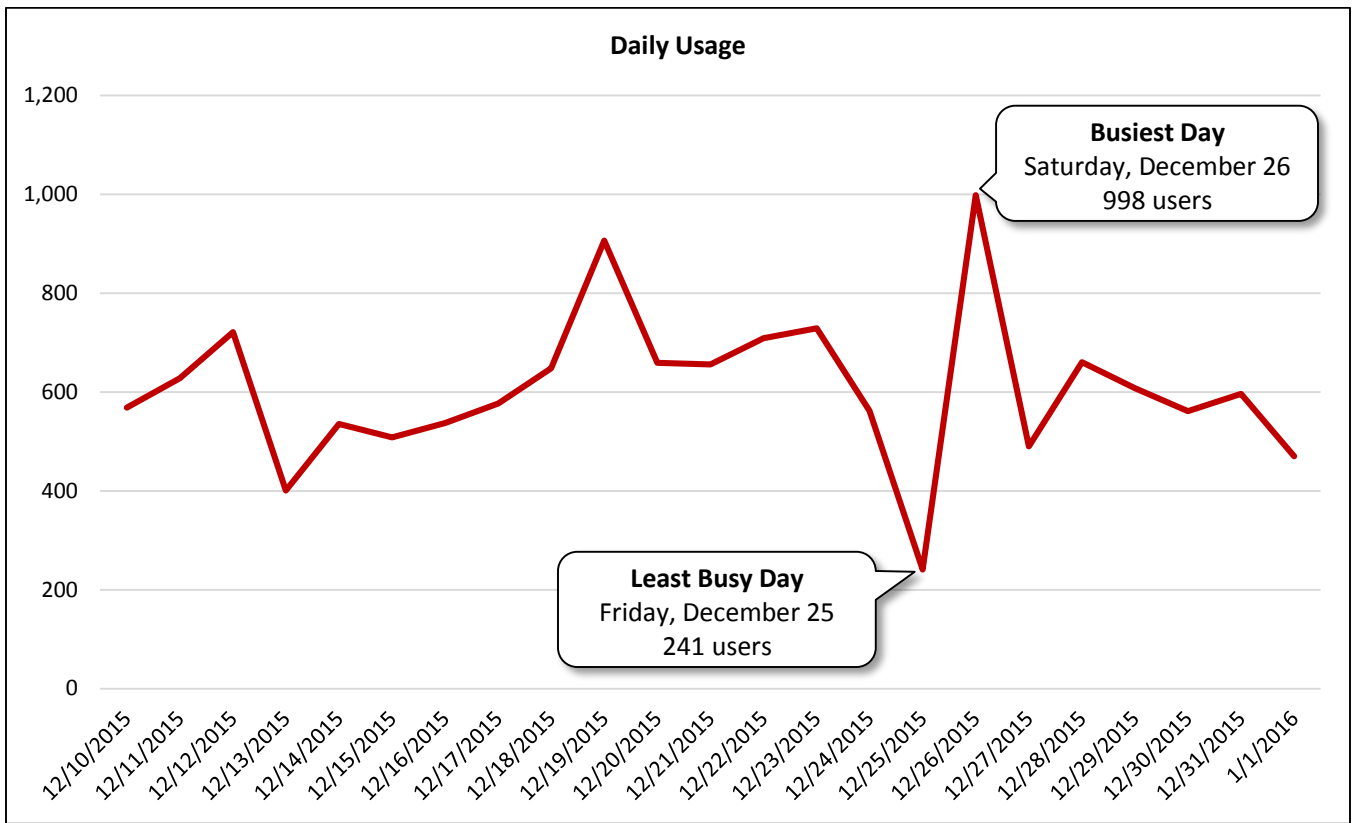


Image 18: Sidewalk along Westheimer Road Facing West

<b>Daily Usage</b>				
Westheimer Road Eastbound East of McCue Road				
Date	Users	Select Weather Data*		
		High Temperature (°F)	Low Temperature (°F)	Precipitation (inches)
Thursday, December 10, 2015	568	80	62	0
Friday, December 11, 2015	628	84	69	0
Saturday, December 12, 2015	721	77	71	0.06
Sunday, December 13, 2015	401	75	50	1.78
Monday, December 14, 2015	535	75	51	0
Tuesday, December 15, 2015	508	75	59	0.13
Wednesday, December 16, 2015	537	73	51	1.14
Thursday, December 17, 2015	577	66	46	0
Friday, December 18, 2015	648	62	42	0
Saturday, December 19, 2015	906	64	46	0
Sunday, December 20, 2015	659	69	53	0
Monday, December 21, 2015	656	75	66	0.28
Tuesday, December 22, 2015	709	73	62	0.01
Wednesday, December 23, 2015	729	84	69	0
Thursday, December 24, 2015	562	80	64	0
Friday, December 25, 2015	241	86	73	0
Saturday, December 26, 2015	998	78	73	0.02
Sunday, December 27, 2015	490	77	44	0.71
Monday, December 28, 2015	660	53	39	0.01
Tuesday, December 29, 2015	608	53	41	0
Wednesday, December 30, 2015	561	55	48	0
Thursday, December 31, 2015	596	53	48	0
Friday, January 1, 2016	470	50	46	0
<b>Total</b>	13,968			
<b>Average Daily Usage</b>	607	<b>Notes</b>		
<b>Average Daily Usage (Weekday)</b>	576	Christmas: Friday, December 25, 2015		
<b>Average Daily Usage (Weekend)</b>	696	New Year's Day: Friday, January 1, 2016		
		Houston Independent School District – Winter Break:		
		Monday, December 21, 2015 – Monday, January 4, 2016		

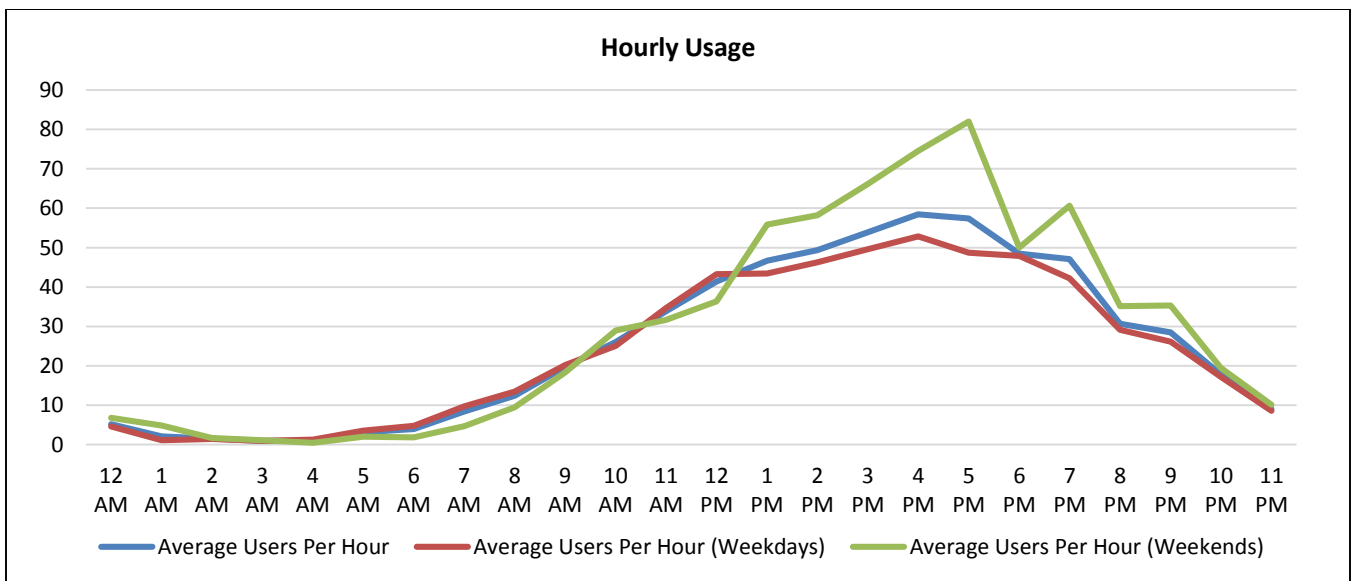
\*Weather conditions recorded at KMCJ.

Note: Counter B stopped collecting data before the other counters, at approximately 9:45 p.m. on Friday, January 1, 2016.



**Hourly Usage**  
Westheimer Road Eastbound East of McCue Road

Time of Day	Average Users Per Hour	Average Users Per Hour (Weekdays)	Average Users Per Hour (Weekends)
12:00 a.m.	5.2	4.6	6.8
1:00 a.m.	2.1	1.1	4.8
2:00 a.m.	1.5	1.5	1.7
3:00 a.m.	1.0	0.9	1.2
4:00 a.m.	1.1	1.3	0.5
5:00 a.m.	3.1	3.5	2.0
6:00 a.m.	4.0	4.8	1.8
7:00 a.m.	8.4	9.8	4.7
8:00 a.m.	12.4	13.5	9.5
9:00 a.m.	19.7	20.2	18.3
10:00 a.m.	26.1	25.1	29.0
11:00 a.m.	33.9	34.6	31.7
12:00 p.m.	41.4	43.2	36.3
1:00 p.m.	46.7	43.4	55.8
2:00 p.m.	49.4	46.3	58.2
3:00 p.m.	53.9	49.6	66.2
4:00 p.m.	58.5	52.8	74.5
5:00 p.m.	57.4	48.7	82.0
6:00 p.m.	48.4	47.9	50.0
7:00 p.m.	47.0	42.2	60.7
8:00 p.m.	30.7	29.1	35.2
9:00 p.m.	28.5	26.1	35.3
10:00 p.m.	17.8	17.2	19.5
11:00 p.m.	9.0	8.6	10.2



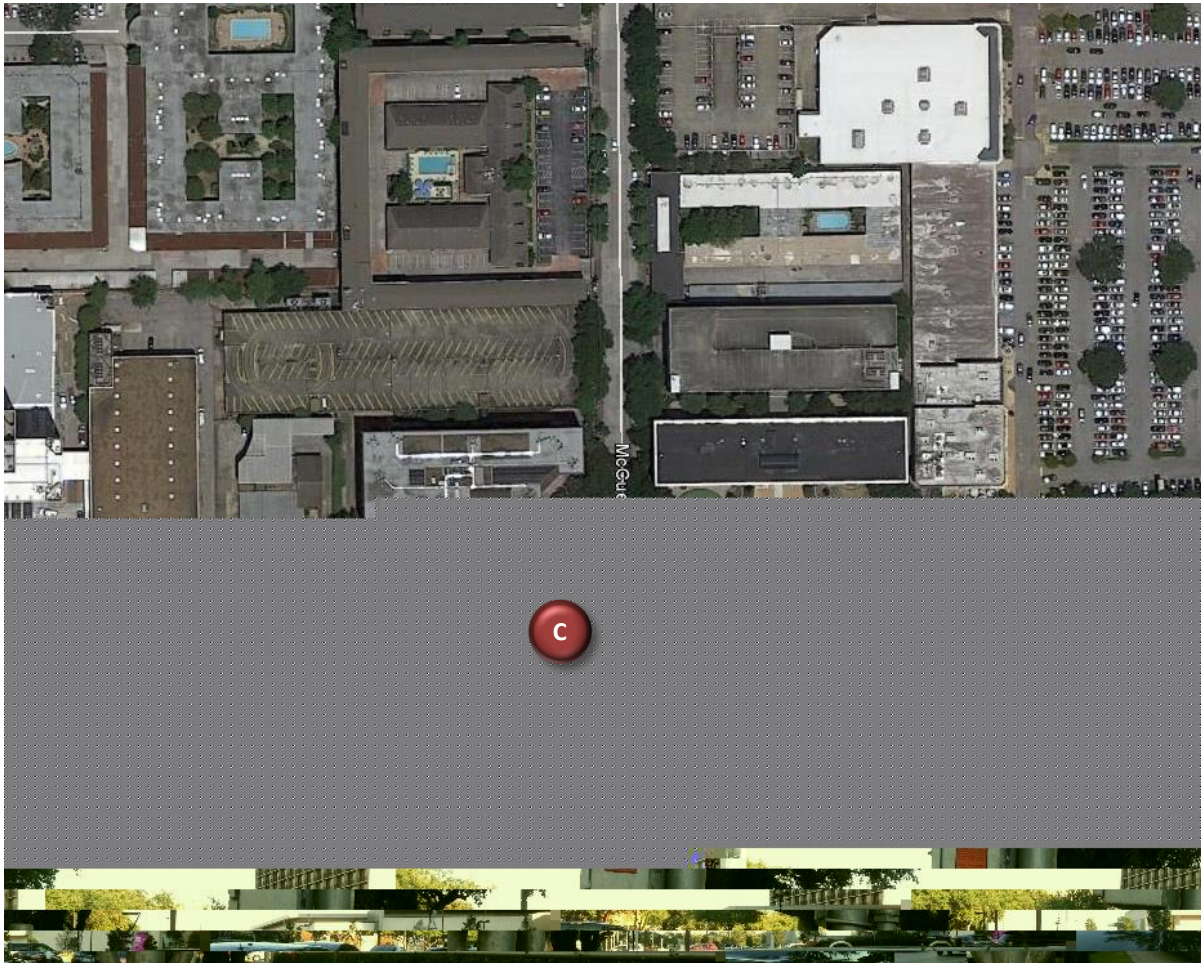
**Counter C**

Westheimer Road Eastbound West of McCue Road

Location Information	
Location Name	Westheimer Road Eastbound West of McCue Road
Location Description	Sidewalk along Westheimer Road Eastbound West of McCue Road near The Galleria
Jurisdiction	City of Houston
Agency Deployed	Houston-Galveston Area Council
GPS Coordinates	29°44'26.07"N, 95°27'51.86"W
Surrounding Land Uses	North Office, Hotel, Multi-Family Residential
	South Commercial/Retail
	East Commercial/Retail, Office
	West Commercial/Retail, Office, Hotel
What object was device secured to?	Oak Tree (First Oak Tree West of McCue Road)
Sidewalk Width	6'
Buffer Width	9'
Street Width	Seven-Lane Divided Roadway
Parallel Parking	No
Landscaping or Trees	Yes
Sidewalk Pavement Type	Concrete
ADA Ramps	Yes
Sidewalk Condition	Good
Speed Limit	35 miles per hour
Street Lighting	Yes
Street Traffic Volume	64,499 (5000 Westheimer Road: 2011)
Transit	Nearby (METRO Bus Stop about 50' West along Westheimer Road Westbound)
Shade	Yes
Have counts been collected by H-GAC at this location before?	No
Notes	Counter C stopped collecting data before the other counters, at approximately 6:00 p.m. on Monday, December 21, 2015.

Trends
<ul style="list-style-type: none"> <li>• Usage tends to be higher during weekends than on weekdays.</li> <li>• On weekdays, usage increases as the day progresses, peaking in the late afternoon (4:00 p.m. – 6:00 p.m.).</li> <li>• During weekends, usage increases as the day progresses, peaking in the late afternoon (3:00 p.m. – 6:00 p.m.).</li> </ul>

**Location Information: Map**



**Location Information: Photos**



Image 19: Sidewalk along Westheimer Road Facing East



Image 20: Sidewalk along Westheimer Road Facing West

**Daily Usage**  
Westheimer Road Eastbound West of McCue Road

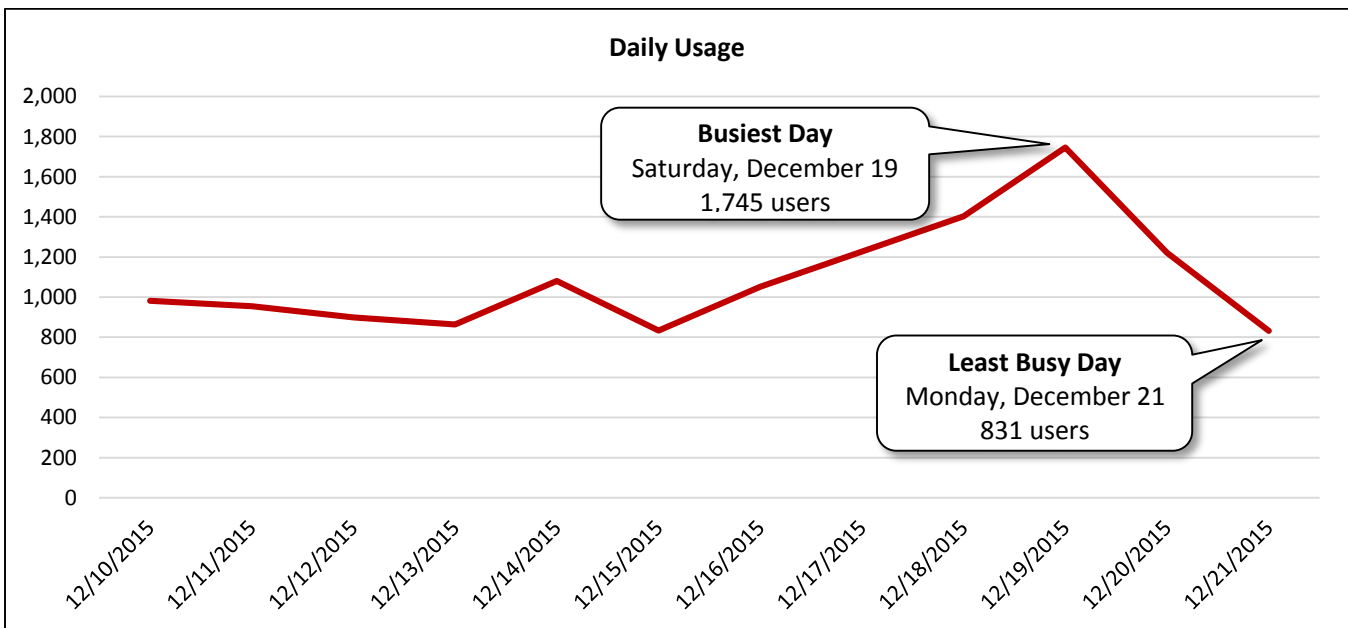
Date	Users	Select Weather Data*		
		High Temperature (°F)	Low Temperature (°F)	Precipitation (inches)
Thursday, December 10, 2015	981	80	62	0
Friday, December 11, 2015	955	84	69	0
Saturday, December 12, 2015	899	77	71	0.06
Sunday, December 13, 2015	863	75	50	1.78
Monday, December 14, 2015	1080	75	51	0
Tuesday, December 15, 2015	834	75	59	0.13
Wednesday, December 16, 2015	1051	73	51	1.14
Thursday, December 17, 2015	1227	66	46	0
Friday, December 18, 2015	1403	62	42	0
Saturday, December 19, 2015	1745	64	46	0
Sunday, December 20, 2015	1221	69	53	0
Monday, December 21, 2015	831	75	66	0.28

<b>Total</b>	13,090
<b>Average Daily Usage</b>	1,091
<b>Average Daily Usage (Weekday)</b>	1,045
<b>Average Daily Usage (Weekend)</b>	1,182

Notes
Christmas: Friday, December 25, 2015
New Year's Day: Friday, January 1, 2016
Houston Independent School District – Winter Break: Monday, December 21, 2015 – Monday, January 4, 2016

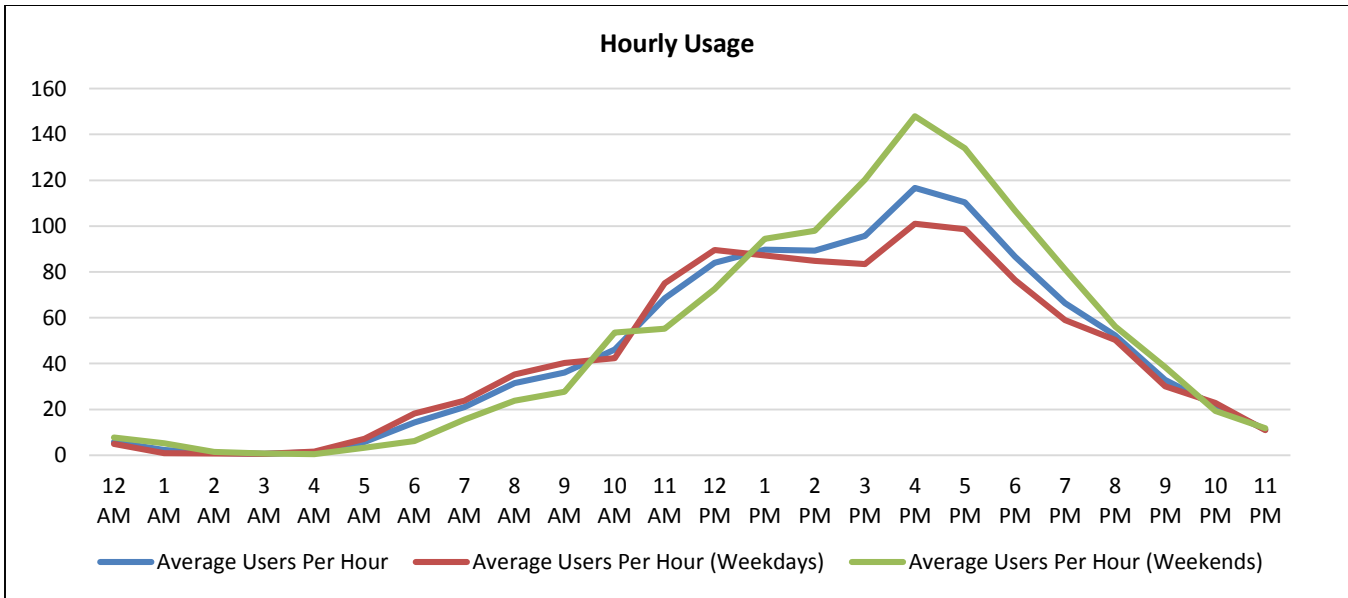
\*Weather conditions recorded at KSGR.

Note: Counter C stopped collecting data before the other counters, at approximately 6:00 p.m. on Monday, December 21, 2015.



**Hourly Usage**  
Westheimer Road Eastbound West of McCue Road

Time of Day	Average Users Per Hour	Average Users Per Hour (Weekdays)	Average Users Per Hour (Weekends)
12:00 a.m.	5.8	4.9	7.8
1:00 a.m.	2.3	0.9	5.3
2:00 a.m.	1.0	0.8	1.5
3:00 a.m.	0.7	0.6	0.8
4:00 a.m.	1.3	1.6	0.5
5:00 a.m.	5.8	7.1	3.3
6:00 a.m.	14.3	18.3	6.3
7:00 a.m.	21.0	23.8	15.5
8:00 a.m.	31.4	35.3	23.8
9:00 a.m.	36.1	40.3	27.8
10:00 a.m.	46.1	42.4	53.5
11:00 a.m.	68.4	75.0	55.3
12:00 p.m.	83.9	89.6	72.5
1:00 p.m.	89.7	87.3	94.5
2:00 p.m.	89.3	84.9	98.0
3:00 p.m.	95.7	83.4	120.3
4:00 p.m.	116.7	101.0	148.0
5:00 p.m.	110.4	98.6	134.0
6:00 p.m.	86.6	76.5	106.8
7:00 p.m.	66.4	59.0	81.3
8:00 p.m.	52.3	50.4	56.3
9:00 p.m.	32.9	30.1	38.5
10:00 p.m.	21.7	22.9	19.3
11:00 p.m.	11.2	10.9	11.8





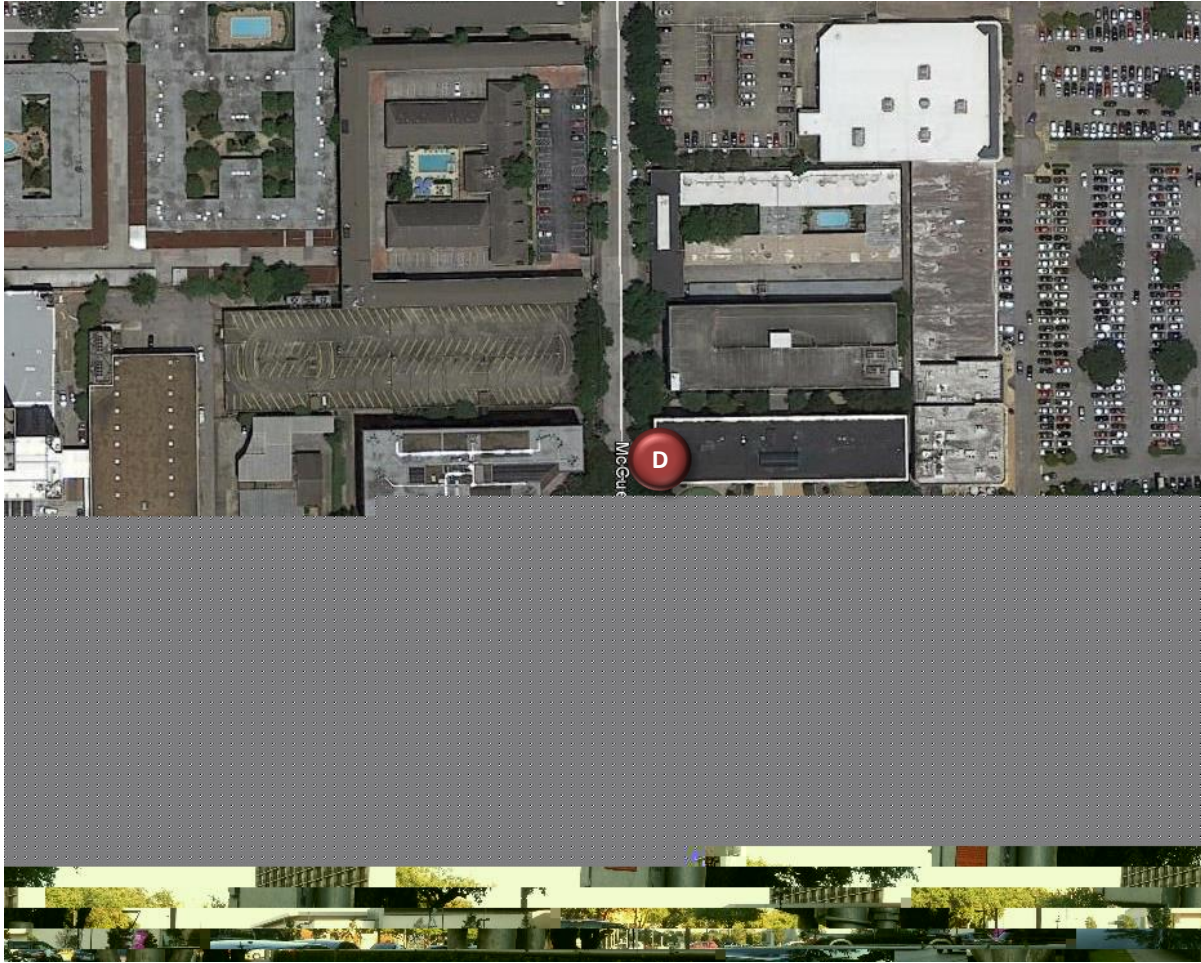
**Counter D**

## McCue Road Northbound North of Westheimer Road

Location Information		
Location Name	McCue Road Northbound North of Westheimer Road	
Location Description	Sidewalk along McCue Road Northbound North of Westheimer Road near The Galleria	
Jurisdiction	City of Houston	
Agency Deployed	Houston-Galveston Area Council/Texas Transportation Institute	
GPS Coordinates	29°44'27.61"N, 95°27'50.97"W	
Surrounding Land Uses	North	Office, Hotel, Multi-Family Residential
	South	Commercial/Retail
	East	Office, Commercial Retail
	West	Office, Commercial/Retail, Hotel
What object was device secured to?	Light Post (Second Light Post North of Westheimer Road)	
Sidewalk Width	4'	
Buffer Width	7'	
Street Width	Four-Lane Undivided Roadway	
Parallel Parking	No	
Landscaping or Trees	Yes	
Sidewalk Pavement Type	Brick Pavers	
ADA Ramps	Yes	
Sidewalk Condition	Fair (Some Cracking and Unevenness)	
Speed Limit	30 miles per hour	
Street Lighting	Yes	
Street Traffic Volume	Not Available	
Transit	Nearby (METRO Bus Stop 75' South at McCue Road/Westheimer Road Intersection)	
Shade	Yes	
Have counts been collected by H-GAC at this location before?	No	

Trends
<ul style="list-style-type: none"> <li>• Usage tends to be higher on weekdays than during weekends.</li> <li>• On weekdays, usage peaks midday (12:00 p.m. – 1:00 p.m.) and remains steady during the afternoon hours.</li> <li>• During weekends, usage increases as the day progresses, peaking in the late afternoon (2:00 p.m. – 5:00 p.m.).</li> </ul>

**Location Information: Map**



**Location Information: Photos**



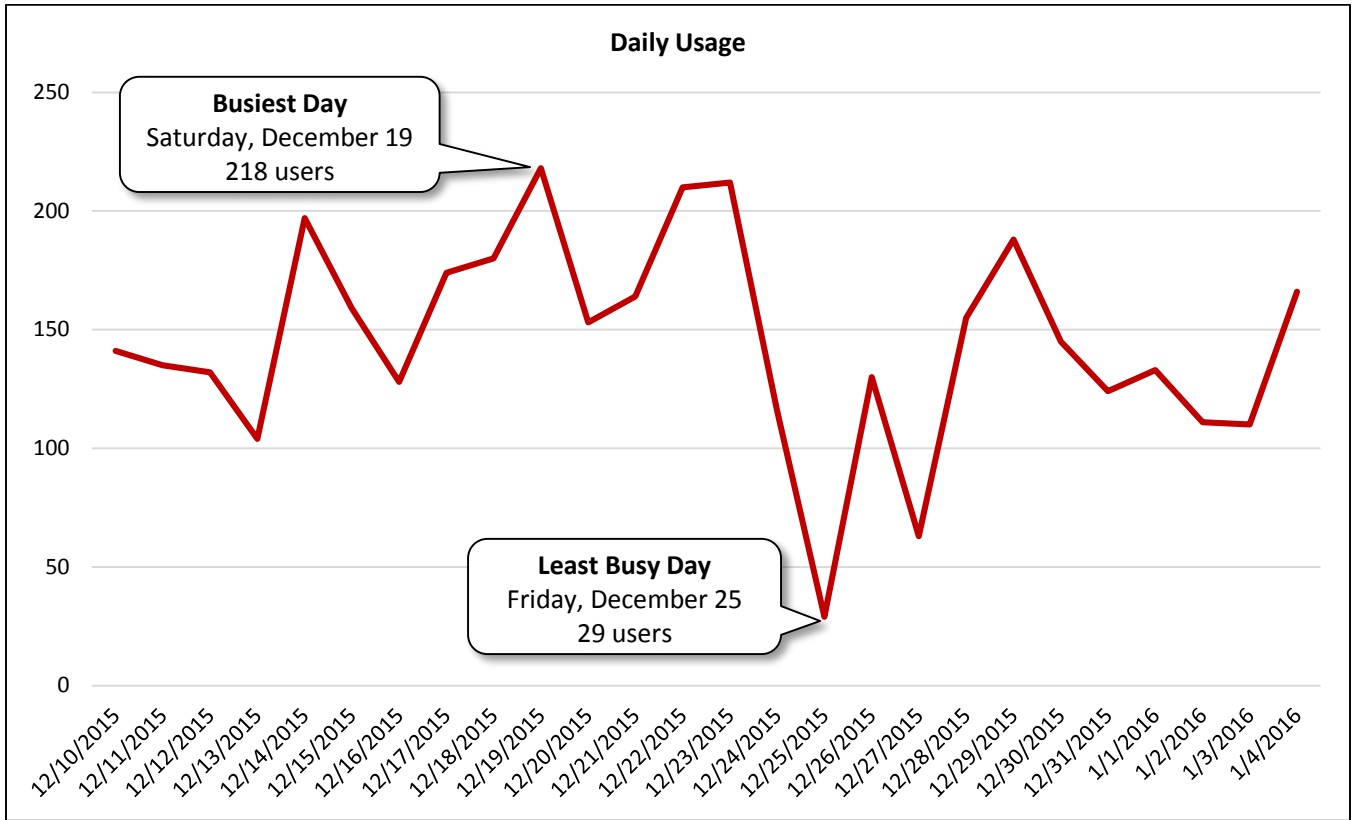
Image 21: Sidewalk along McCue Road Facing North



Image 22: Sidewalk along McCue Road Facing South

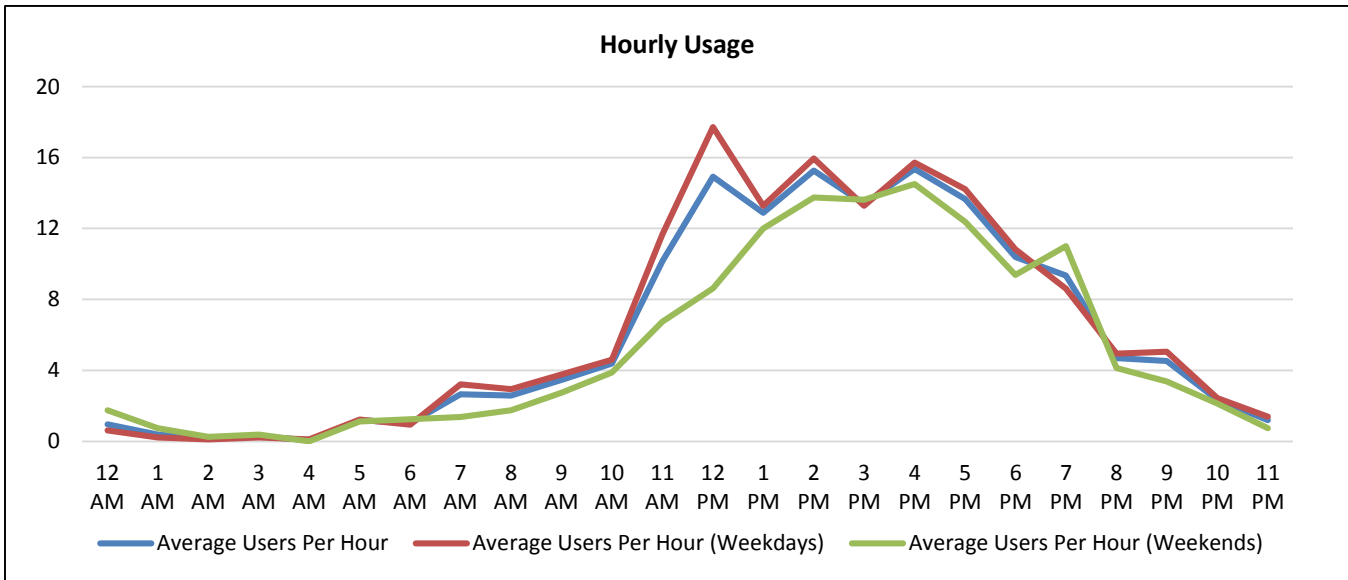
<b>Daily Usage</b>				
McCue Road Northbound North of Westheimer Road				
Date	Users	Select Weather Data*		
		High Temperature (°F)	Low Temperature (°F)	Precipitation (inches)
Thursday, December 10, 2015	141	80	62	0
Friday, December 11, 2015	135	84	69	0
Saturday, December 12, 2015	132	77	71	0.06
Sunday, December 13, 2015	104	75	50	1.78
Monday, December 14, 2015	197	75	51	0
Tuesday, December 15, 2015	159	75	59	0.13
Wednesday, December 16, 2015	128	73	51	1.14
Thursday, December 17, 2015	174	66	46	0
Friday, December 18, 2015	180	62	42	0
Saturday, December 19, 2015	218	64	46	0
Sunday, December 20, 2015	153	69	53	0
Monday, December 21, 2015	164	75	66	0.28
Tuesday, December 22, 2015	210	73	62	0.01
Wednesday, December 23, 2015	212	84	69	0
Thursday, December 24, 2015	116	80	64	0
Friday, December 25, 2015	29	86	73	0
Saturday, December 26, 2015	130	78	73	0.02
Sunday, December 27, 2015	63	77	44	0.71
Monday, December 28, 2015	155	53	39	0.01
Tuesday, December 29, 2015	188	53	41	0
Wednesday, December 30, 2015	145	55	48	0
Thursday, December 31, 2015	124	53	48	0
Friday, January 1, 2016	133	50	46	0
Saturday, January 2, 2016	111	50	44	0.01
Sunday, January 3, 2016	110	62	42	0.02
Monday, January 4, 2016	166	62	41	0
<b>Total</b>	3,777			
<b>Average Daily Usage</b>	145			
<b>Average Daily Usage (Weekday)</b>	153			
<b>Average Daily Usage (Weekend)</b>	128			
		<b>Notes</b>		
		Christmas: Friday, December 25, 2015 New Year's Day: Friday, January 1, 2016 Houston Independent School District – Winter Break: Monday, December 21, 2015 – Monday, January 4, 2016		

\*Weather conditions recorded at KMCJ.



**Hourly Usage**  
McCue Road Northbound North of Westheimer Road

Time of Day	Average Users Per Hour	Average Users Per Hour (Weekdays)	Average Users Per Hour (Weekends)
12:00 a.m.	1.0	0.6	1.8
1:00 a.m.	0.4	0.2	0.8
2:00 a.m.	0.2	0.1	0.3
3:00 a.m.	0.3	0.2	0.4
4:00 a.m.	0.1	0.1	0.0
5:00 a.m.	1.2	1.2	1.1
6:00 a.m.	1.0	0.9	1.3
7:00 a.m.	2.7	3.2	1.4
8:00 a.m.	2.6	2.9	1.8
9:00 a.m.	3.5	3.8	2.8
10:00 a.m.	4.4	4.6	3.9
11:00 a.m.	10.2	11.7	6.8
12:00 p.m.	14.9	17.7	8.6
1:00 p.m.	12.9	13.3	12.0
2:00 p.m.	15.3	15.9	13.8
3:00 p.m.	13.4	13.3	13.6
4:00 p.m.	15.3	15.7	14.5
5:00 p.m.	13.7	14.2	12.4
6:00 p.m.	10.4	10.8	9.4
7:00 p.m.	9.3	8.6	11.0
8:00 p.m.	4.7	4.9	4.1
9:00 p.m.	4.5	5.1	3.4
10:00 p.m.	2.3	2.4	2.1
11:00 p.m.	1.2	1.4	0.8



**Counter E**

McCue Road Southbound North of Westheimer Road

Location Information		
Location Name	McCue Road Southbound North of Westheimer Road	
Location Description	Sidewalk along McCue Road Southbound North of Westheimer Road near The Galleria	
Jurisdiction	City of Houston	
Agency Deployed	Houston-Galveston Area Council/Texas Transportation Institute	
GPS Coordinates	29°44'27.63"N, 95°27'51.57"W	
Surrounding Land Uses	North	Office, Hotel, Multi-Family Residential
	South	Commercial/Retail
	East	Office, Commercial Retail
	West	Office, Commercial/Retail, Hotel
What object was device secured to?	Light Post (Second Light Post North of Westheimer Road)	
Sidewalk Width	6'	
Buffer Width	2.5' (Note: Buffer surfaced with textured pavers.)	
Street Width	Four-Lane Undivided Roadway	
Parallel Parking	No	
Landscaping or Trees	Yes	
Sidewalk Pavement Type	Brick Pavers	
ADA Ramps	Yes	
Sidewalk Condition	Good	
Speed Limit	30 miles per hour	
Street Lighting	Yes	
Street Traffic Volume	Not Available	
Transit	Yes (METRO Bus Stop 150' South at McCue Road/Westheimer Road Intersection)	
Shade	Yes	
Have counts been collected by H-GAC at this location before?	No	

Trends
<ul style="list-style-type: none"> <li>At the end of the deployment period, Counter E was found on the ground at the bottom of the post it was attached to, which may have impacted data collected.</li> <li>Usage tends to be slightly higher on weekdays than during weekends.</li> <li>Daily usage varied significantly. On 15 days, more than 250 people used the sidewalk. On five days, less than 25 people used the sidewalk.</li> <li>On weekdays, usage generally increases as the day progresses, peaking in the late afternoon (4:00 p.m. – 6:00 p.m.).</li> <li>During weekends, usage increases as the day progresses, peaking in the late afternoon (4:00 p.m. – 5:00 p.m.).</li> </ul>

**Location Information: Map**



**Location Information: Photos**

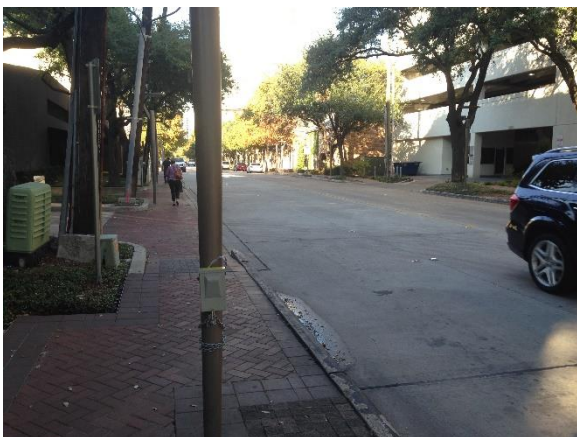


Image 23: Sidewalk along McCue Road Facing North



Image 24: Sidewalk along McCue Road Facing South

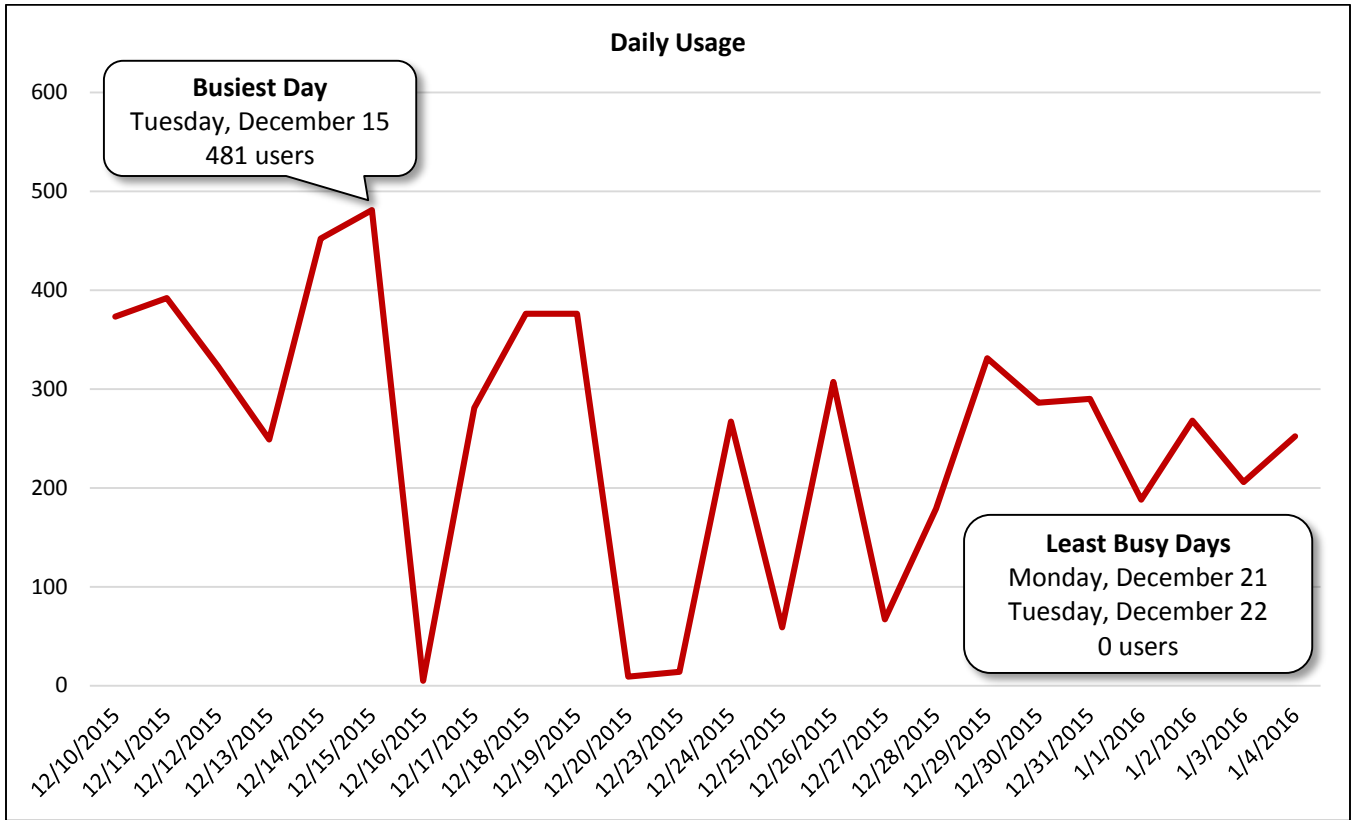
<b>Daily Usage</b>				
McCue Road Southbound North of Westheimer Road				
Date	Users	Select Weather Data*		
		High Temperature (°F)	Low Temperature (°F)	Precipitation (inches)
Thursday, December 10, 2015	373	80	62	0
Friday, December 11, 2015	392	84	69	0
Saturday, December 12, 2015	323	77	71	0.06
Sunday, December 13, 2015	249	75	50	1.78
Monday, December 14, 2015	452	75	51	0
Tuesday, December 15, 2015	481	75	59	0.13
Wednesday, December 16, 2015	5	73	51	1.14
Thursday, December 17, 2015	281	66	46	0
Friday, December 18, 2015	376	62	42	0
Saturday, December 19, 2015	376	64	46	0
Sunday, December 20, 2015	9	69	53	0
Monday, December 21, 2015	0	75	66	0.28
Tuesday, December 22, 2015	0	73	62	0.01
Wednesday, December 23, 2015	14	84	69	0
Thursday, December 24, 2015	267	80	64	0
Friday, December 25, 2015	59	86	73	0
Saturday, December 26, 2015	307	78	73	0.02
Sunday, December 27, 2015	67	77	44	0.71
Monday, December 28, 2015	179	53	39	0.01
Tuesday, December 29, 2015	331	53	41	0
Wednesday, December 30, 2015	286	55	48	0
Thursday, December 31, 2015	290	53	48	0
Friday, January 1, 2016	188	50	46	0
Saturday, January 2, 2016	268	50	44	0.01
Sunday, January 3, 2016	206	62	42	0.02
Monday, January 4, 2016	252	62	41	0
<b>Total</b>	6,031	<b>Notes</b>		
<b>Average Daily Usage</b>	232	Christmas: Friday, December 25, 2015		
<b>Average Daily Usage (Weekday)</b>	235	New Year's Day: Friday, January 1, 2016		
<b>Average Daily Usage (Weekend)</b>	226	Houston Independent School District – Winter Break: Monday, December 21, 2015 – Monday, January 4, 2016		

\*Weather conditions recorded at KMCJ.

Note:

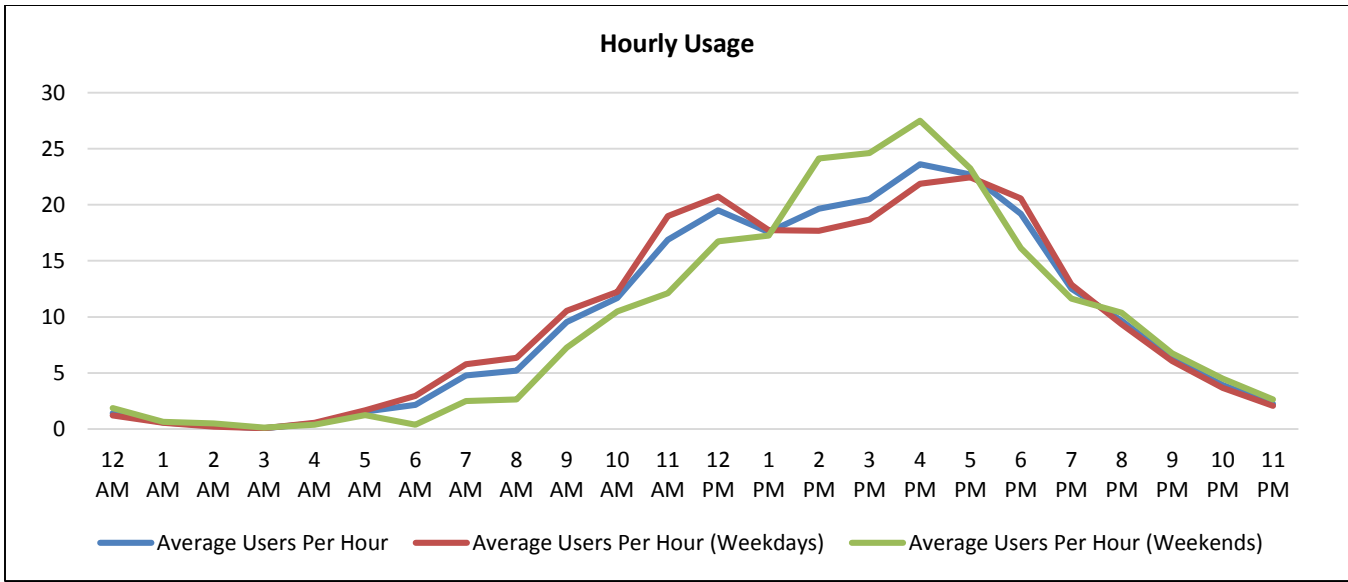
At the end of the deployment period, Counter E was found on the ground at the bottom of the post it was attached to, which may have impacted data collected.





**Hourly Usage**  
McCue Road Southbound North of Westheimer Road

Time of Day	Average Users Per Hour	Average Users Per Hour (Weekdays)	Average Users Per Hour (Weekends)
12:00 a.m.	1.4	1.2	1.9
1:00 a.m.	0.6	0.6	0.6
2:00 a.m.	0.3	0.2	0.5
3:00 a.m.	0.1	0.1	0.1
4:00 a.m.	0.5	0.6	0.4
5:00 a.m.	1.5	1.7	1.3
6:00 a.m.	2.2	2.9	0.4
7:00 a.m.	4.8	5.8	2.5
8:00 a.m.	5.2	6.3	2.6
9:00 a.m.	9.5	10.6	7.3
10:00 a.m.	11.7	12.2	10.5
11:00 a.m.	16.9	19.0	12.1
12:00 p.m.	19.5	20.7	16.8
1:00 p.m.	17.6	17.7	17.3
2:00 p.m.	19.7	17.7	24.1
3:00 p.m.	20.5	18.7	24.6
4:00 p.m.	23.6	21.9	27.5
5:00 p.m.	22.7	22.4	23.3
6:00 p.m.	19.2	20.6	16.1
7:00 p.m.	12.5	12.9	11.6
8:00 p.m.	9.7	9.3	10.4
9:00 p.m.	6.3	6.1	6.8
10:00 p.m.	3.9	3.7	4.5
11:00 p.m.	2.2	2.1	2.6



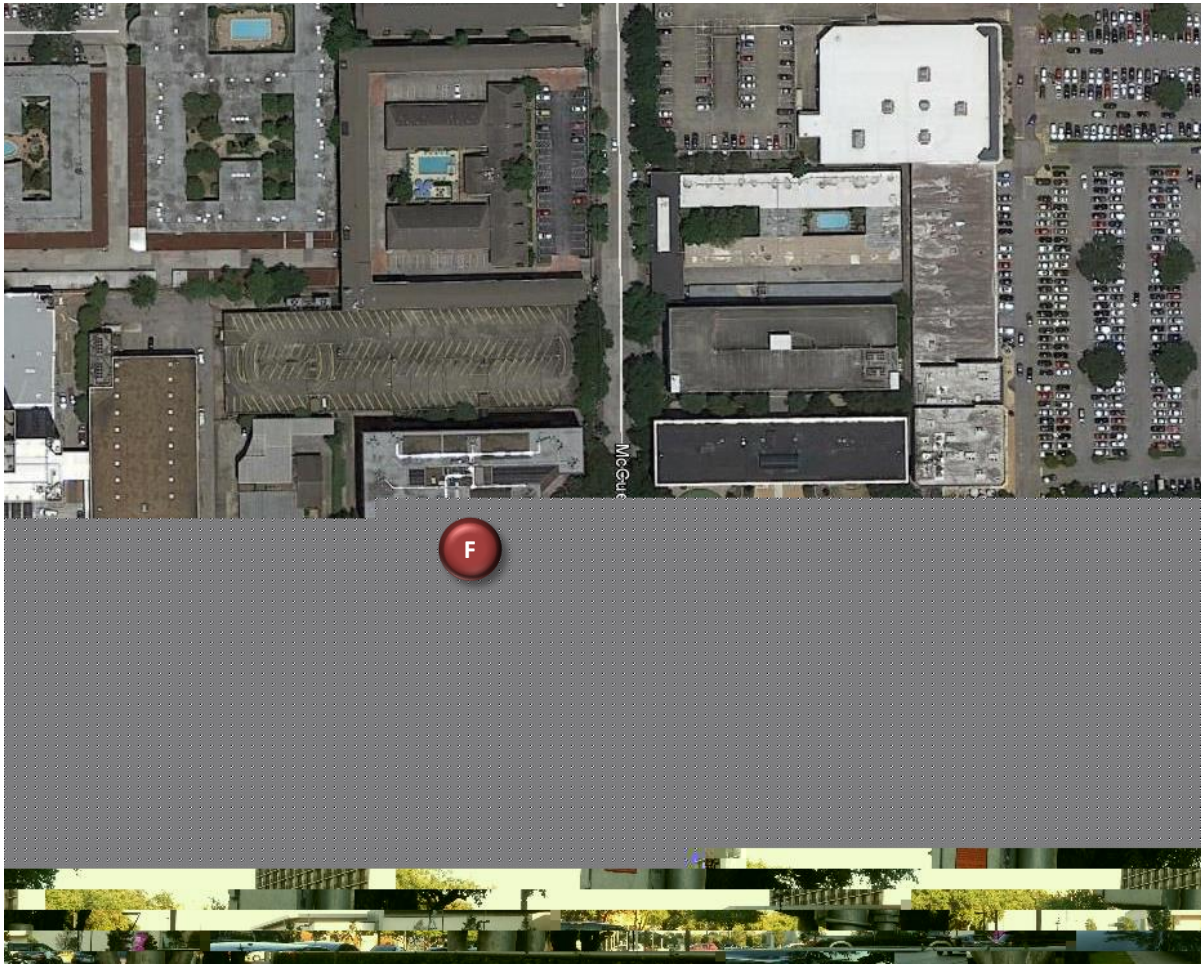
## Counter F

### Westheimer Road Westbound West of McCue Road

Location Information		
Location Name	Westheimer Road Westbound West of McCue Road	
Location Description	Sidewalk along Westheimer Road Westbound West of McCue Road near The Galleria	
Jurisdiction	City of Houston	
Agency Deployed	Houston-Galveston Area Council/Texas Transportation Institute	
GPS Coordinates	29°44'26.89"N, 95°27'53.02"W	
Surrounding Land Uses	North	Office, Hotel, Multi-Family Residential
	South	Commercial/Retail
	East	Office, Commercial/Retail
	West	Office, Commercial/Retail, Hotel
What object was device secured to?	Light Post	
Sidewalk Width	8'	
Buffer Width	1.5'	
Street Width*	Seven-Lane Divided Roadway	
Parallel Parking	No	
Landscaping or Trees	Yes	
Sidewalk Pavement Type	Concrete	
ADA Ramps	Yes	
Sidewalk Condition	Good	
Speed Limit	35 miles per hour	
Street Lighting	Yes	
Street Traffic Volume	64,499 (5000 Westheimer Road: 2011)	
Transit	Nearby (METRO Bus Stop 200' East at Westheimer Road/McCue Road Intersection)	
Shade	Intermittent Shade	
Have counts been collected by H-GAC at this location before?	No	
Notes	Counter F stopped collecting data before the other counters, at approximately 3:35 p.m. on Thursday, December 24, 2015.	

Trends
<ul style="list-style-type: none"> <li>Counter F was vandalized sometime during the deployment period, which may have impacted data collected.</li> <li>Daily usage varied significantly. Further data collection may be necessary to determine pedestrian/bicycle travel patterns in the area.</li> <li>Usage tends to be slightly higher on weekdays than during weekends.</li> <li>On weekdays, usage is highest in the late afternoon and evening (4:00 p.m. – 8:00 p.m.). Peak usage on weekdays may be skewed, as usage was abnormally high the evening of Wednesday, December 16.</li> <li>During weekends, usage peaks in the late afternoon (4:00 p.m. – 5:00 p.m.).</li> </ul>

**Location Information: Map**



**Location Information: Photos**



Image 25: Sidewalk along Westheimer Road Facing East



Image 26: Sidewalk along Westheimer Road Facing West

**Daily Usage**  
Westheimer Road Westbound West of McCue Road

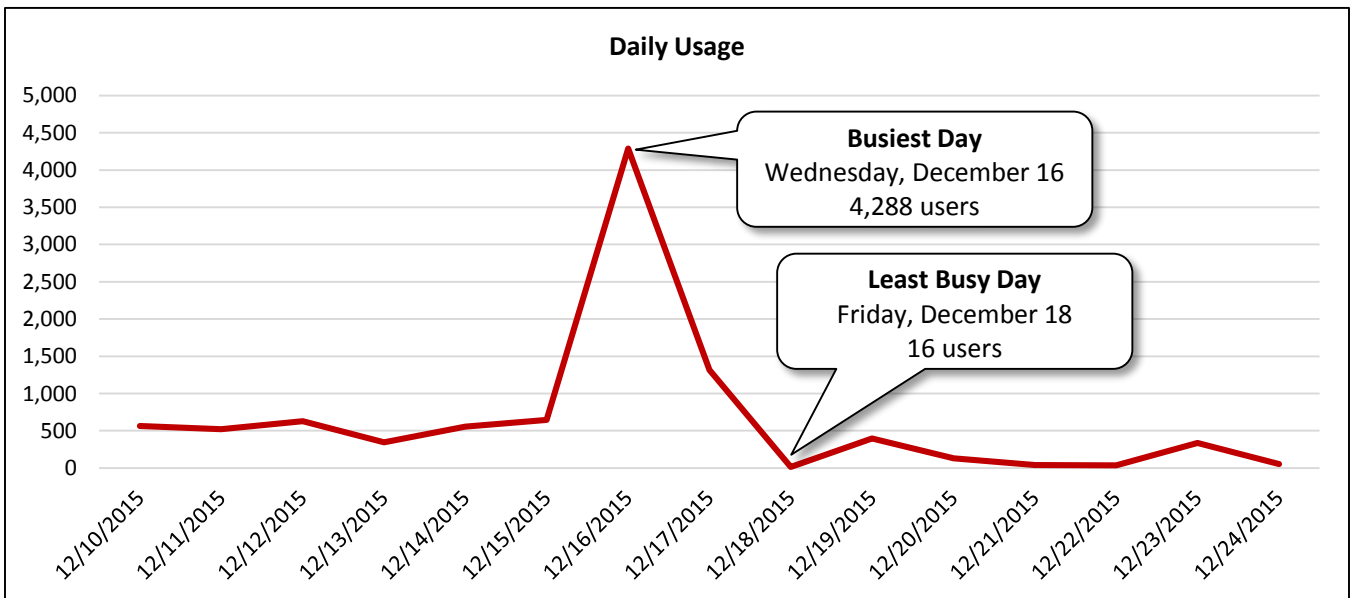
Date	Users	Select Weather Data*		
		High Temperature (°F)	Low Temperature (°F)	Precipitation (inches)
Thursday, December 10, 2015	565	80	62	0
Friday, December 11, 2015	523	84	69	0
Saturday, December 12, 2015	630	77	71	0.06
Sunday, December 13, 2015	347	75	50	1.78
Monday, December 14, 2015	554	75	51	0
Tuesday, December 15, 2015	645	75	59	0.13
Wednesday, December 16, 2015	4,288	73	51	1.14
Thursday, December 17, 2015	1,317	66	46	0
Friday, December 18, 2015	16	62	42	0
Saturday, December 19, 2015	395	64	46	0
Sunday, December 20, 2015	129	69	53	0
Monday, December 21, 2015	40	75	66	0.28
Tuesday, December 22, 2015	37	73	62	0.01
Wednesday, December 23, 2015	337	84	69	0
Thursday, December 24, 2015	54	80	64	0

<b>Total</b>	9,877
<b>Average Daily Usage</b>	658
<b>Average Daily Usage (Weekday)</b>	761
<b>Average Daily Usage (Weekend)</b>	375

Notes
Christmas: Friday, December 25, 2015
New Year's Day: Friday, January 1, 2016
Houston Independent School District – Winter Break: Monday, December 21, 2015 – Monday, January 4, 2016

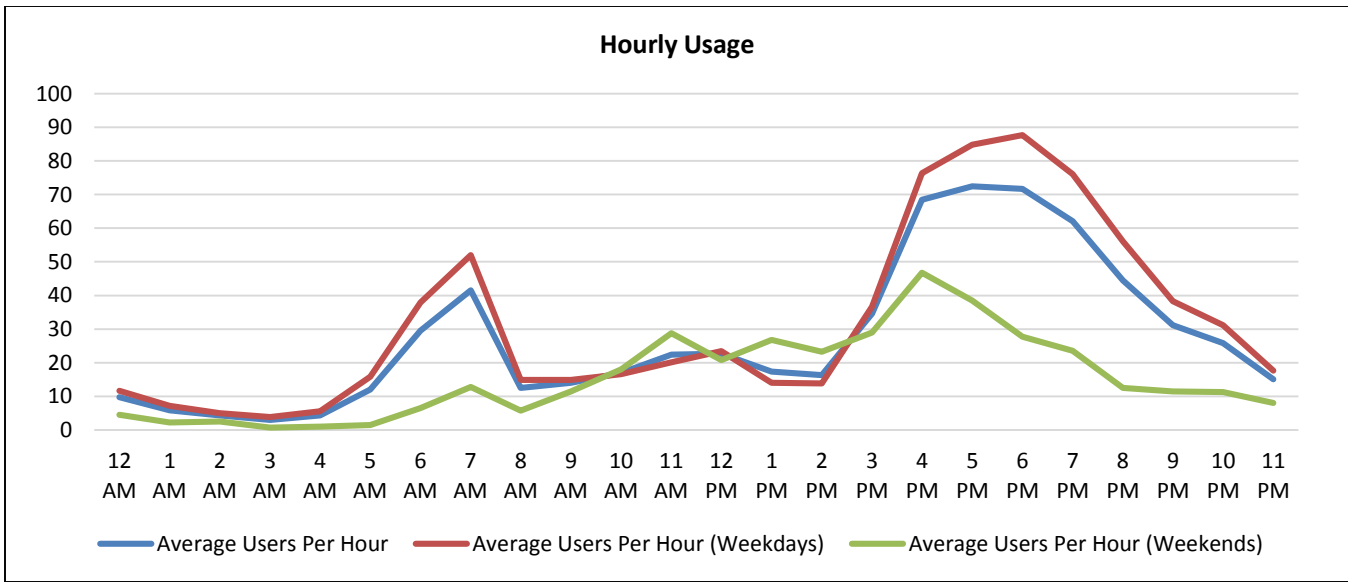
\*Weather conditions recorded at KSGR.

Note: Counter F was vandalized sometime during the deployment period, which may have impacted data collected. It stopped collecting data before the other counters, at approximately 3:35 p.m. on Thursday, December 24, 2015.



**Hourly Usage**  
Westheimer Road Westbound West of McCue Road

Time of Day	Average Users Per Hour	Average Users Per Hour (Weekdays)	Average Users Per Hour (Weekends)
12:00 a.m.	9.7	11.6	4.5
1:00 a.m.	5.9	7.2	2.3
2:00 a.m.	4.3	5.0	2.5
3:00 a.m.	3.0	3.8	0.8
4:00 a.m.	4.3	5.5	1.0
5:00 a.m.	12.0	15.8	1.5
6:00 a.m.	29.5	37.9	6.5
7:00 a.m.	41.5	52.0	12.8
8:00 a.m.	12.5	14.9	5.8
9:00 a.m.	14.0	14.9	11.5
10:00 a.m.	17.0	16.6	18.0
11:00 a.m.	22.4	20.1	28.8
12:00 p.m.	22.7	23.5	20.8
1:00 p.m.	17.4	14.0	26.8
2:00 p.m.	16.3	13.8	23.3
3:00 p.m.	34.6	36.6	29.0
4:00 p.m.	68.5	76.4	46.8
5:00 p.m.	72.5	84.8	38.5
6:00 p.m.	71.7	87.6	27.8
7:00 p.m.	62.1	76.1	23.5
8:00 p.m.	44.5	56.1	12.5
9:00 p.m.	31.1	38.3	11.5
10:00 p.m.	25.9	31.2	11.3
11:00 p.m.	15.1	17.6	8.0



## Participants

Houston-Galveston Area Council: Pedestrian-Bicyclist Planning  
[www.h-gac.com/go/pedbike](http://www.h-gac.com/go/pedbike)

Texas Transportation Institute  
<http://tti.tamu.edu/>