



HOUSTON
PARKS BOARD

BAYOU GREENWAYS TRAIL USAGE DATA

MAY – JULY 2020

Counters Provided by



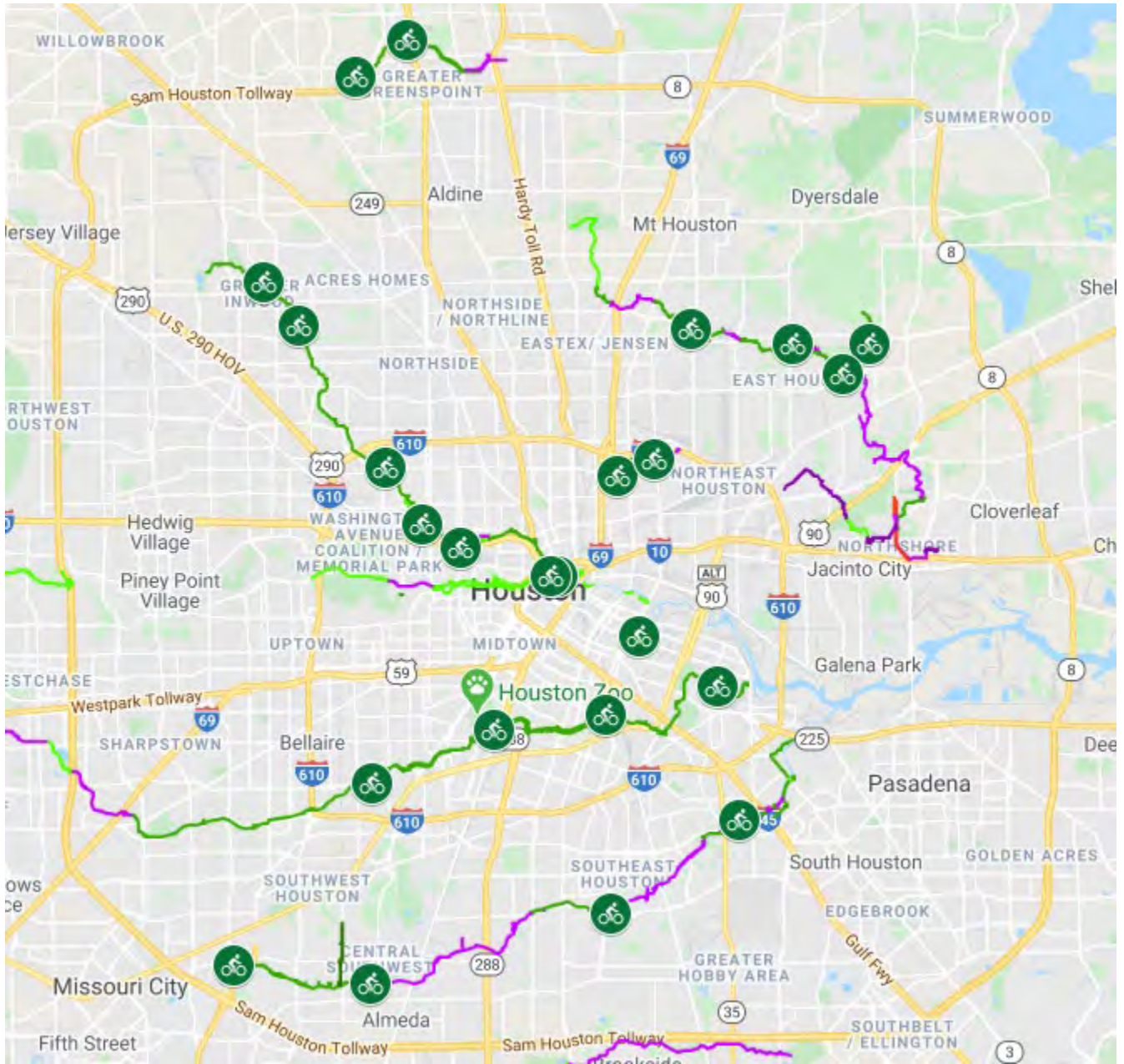
TEMPORARY TRAIL COUNTER LOCATIONS AND MONITORING PERIODS

Period	Box	Bayou or Trail Location
First Period May 1 - 18	3	White Oak Bayou - Moy Street Bridge ¹
	4	White Oak Bayou confluence with Buffalo Bayou
	5	Buffalo Bayou at Travis Street
	6	Harrisburg-Sunset Trail
Second Period May 18 - June 2	3	White Oak - Ella
	4	White Oak - Oakbrook
	5	White Oak - Alabonson
	6	White Oak - Yale Street
Third Period June 2 - 18	3	Brays - Mason Park (near south side of new bridge) ²
	4	Brays - University Bridge (north side)
	5	Brays - Hermann Park (Bill Coates Bridge east side)
	6	Brays - Lookout Ct. (by exercise pavilion)
Fourth Period June 18 - July 2	3	Sims - Reveille Park
	4	Sims - Airport at MLK
	5	Sims - Near Bayberry Drive (west of Buffalo Speedway)
	6	Sims - Blueridge Park
Fifth Period July 2 - 16	3	Greens - Brock Park (south) with Halls Trail ³
	4	Greens - Valley Forest ³
	5	Greens - Bridge by I-45
	6	Greens - Fall Lake
Sixth Period July 16 - July 30	3	Halls - Lake Forest Park ⁴
	4	Halls - Tidwell Park ⁵
	5	Hunting - Mickey Leland Park
	6	Hunting - Pickfair

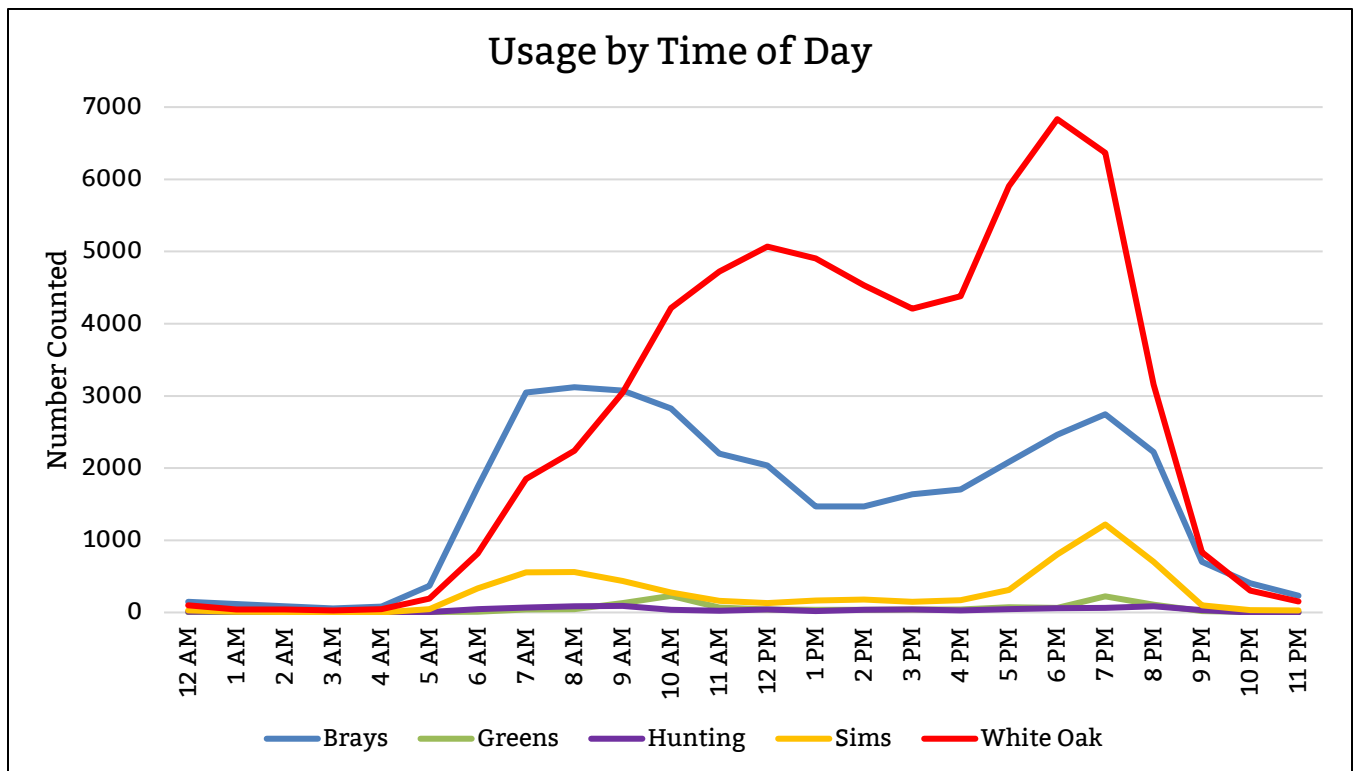
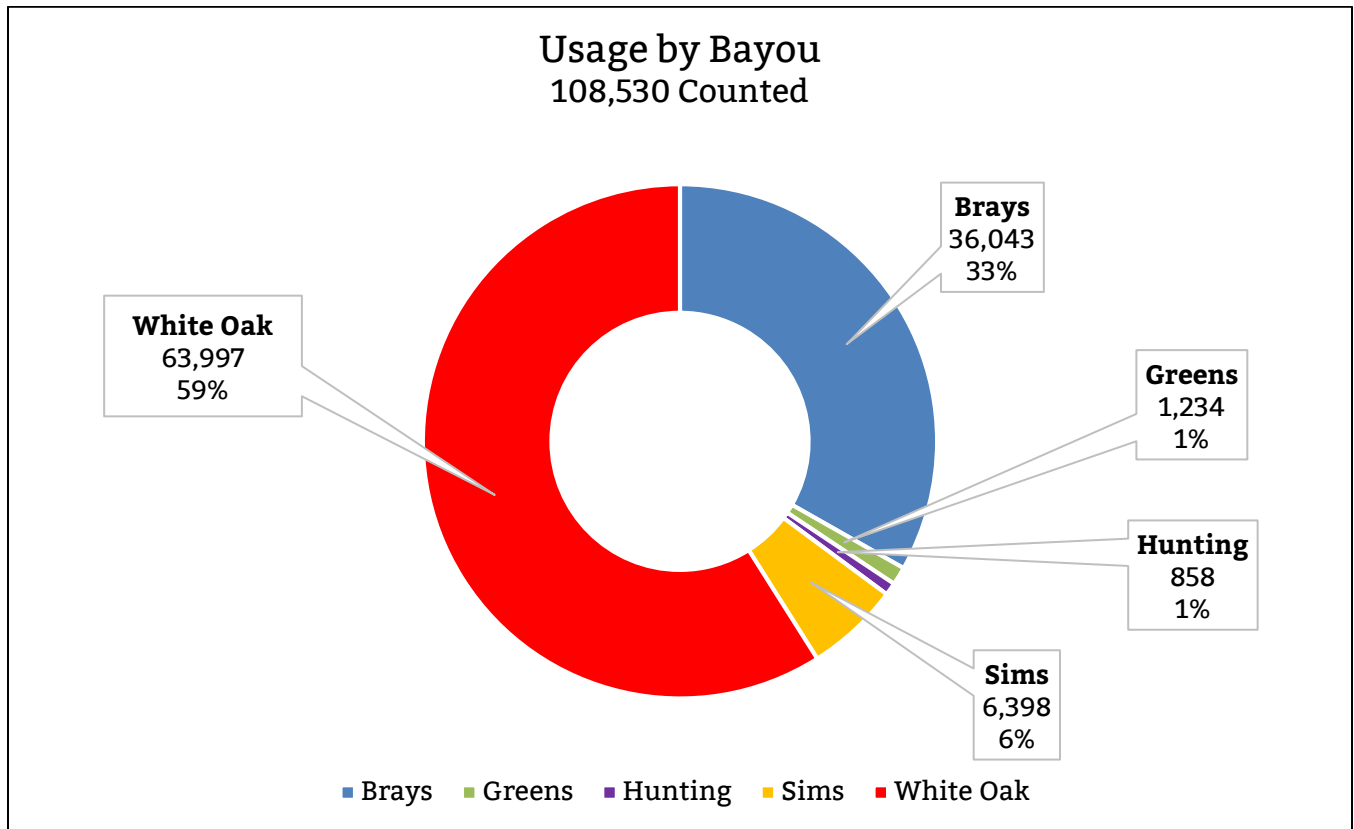
NOTES:

- ¹ Counter stopped collecting data on Thursday, May 14 before 11:00 a.m., which may have been battery related.
- ² Counter was checked two days after installation to see if it was collecting data, and found that the batteries had died again. Batteries were replaced on June 4. On June 8 before 10:00 p.m. an unidentified person apparently tried to remove (steal) the counter, and in doing so moved it to a position no longer pointing at the trail. Although we were able to collect some data, it was determined the location would have to be studied in the future.
- ³ Counters did not record data due to malfunction (unknown reason as battery registered as good). The location will have to be studied in the future.
- ⁴ Counter stopped collecting data on Friday, July 17 before 6:00 a.m., which may be related to the issue during the previous period. This provided such little data that it was determined the location would have to be studied in the future.
- ⁵ Counter box was vandalized. Someone cut the lock and opened the box, but the camera was not stolen. Unsure if the counter was recording data prior to that event (see note for prior period), but no data was saved. The location will have to be studied in the future.

TEMPORARY TRAIL COUNTER LOCATIONS

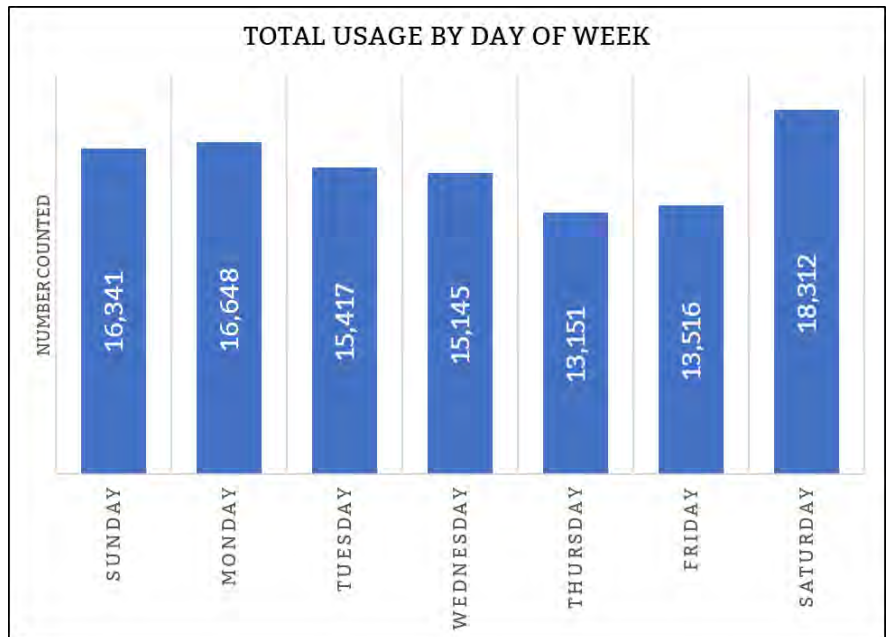


SUMMARY FINDINGS



WEEKDAY USAGE BY BAYOU	
Days	Counted
Brays	26443
Monday	4183
Tuesday	5358
Wednesday	6155
Thursday	5443
Friday	5304
Greens	1002
Monday	113
Tuesday	150
Wednesday	159
Thursday	332
Friday	248
Hunting	676
Monday	174
Tuesday	115
Wednesday	103
Thursday	183
Friday	101
Sims	5024
Monday	959
Tuesday	1050
Wednesday	933
Thursday	1118
Friday	964
White Oak	40732
Monday	11219
Tuesday	8744
Wednesday	7795
Thursday	6075
Friday	6899
Grand Total	73877

WEEKEND USAGE BY BAYOU	
Days	Counted
Brays	9600
Sunday	4500
Saturday	5100
Greens	232
Sunday	109
Saturday	123
Hunting	182
Sunday	55
Saturday	127
Sims	1374
Sunday	668
Saturday	706
White Oak	23265
Sunday	11009
Saturday	12256
Grand Total	34653



Bayou or Trail Location	Avg. Weekday Daily Users	Avg. Weekend Daily Users
White Oak Bayou - Moy Street Bridge ¹	1101	1813
White Oak Bayou confluence with Buffalo Bayou	866	1713
Buffalo Bayou at Travis Street	552	670
Harrisburg-Sunset Trail	294	367
White Oak - Ella	452	N/A
White Oak - Oakbrook	474	398
White Oak - Alabonson	257	219
White Oak - Yale Street	768	816
Brays - Mason Park (near south side of new bridge) ²	887	688
Brays - University Bridge (north side)	981	938
Brays - Hermann Park (Bill Coates Bridge east side)	245	316
Brays - Lookout Ct. (by exercise pavilion)	603	803
Sims - Reveille Park	158	130
Sims - Airport at MLK	130	101
Sims - Near Bayberry Drive (west of Buffalo Speedway)	55	36
Sims - Blueridge Park	139	77
Greens - Brock Park (south) with Halls Trail ³	N/A	N/A
Greens - Valley Forest ³	N/A	N/A
Greens - Bridge by I-45	66	41
Greens - Fall Lake	35	17
Halls - Lake Forest Park ⁴	N/A	N/A
Halls - Tidwell Park ⁵	N/A	N/A
Hunting - Mickey Leland Park	46	33
Hunting - Pickfair	16	13

N/A: Counter did not collect data

Counter #3

White Oak Bayou: Moy Street Bridge (T3WOBMOYSTBRG)

Location Information	
Location Name	White Oak Bayou: Moy Street Bridge
Location Description	White Oak Bayou (pedestrian bridge over bayou Moy Street)
Jurisdiction	City of Houston
Agency Deployed	Houston Parks Board
What object was device secured to?	Bridge railing
Date/Time Installed	Friday, May 1, 2020 (1:15 p.m.)
Date/Time Retrieved	Thursday, May 18, 2020 (11:15 a.m.)
Sidewalk Width	14'
Buffer Width	n/a (counter about 1' from path)
Street Width	n/a (off-street shared-use path)
Parallel Parking	n/a (off-street shared-use path)
Landscaping or Trees	No
Sidewalk Pavement Type	Concrete
ADA Ramps	Yes
Condition Sidewalk	Excellent
Speed Limit	n/a (off-street shared-use path)
Street Lighting	No
Street Traffic Volume	n/a (off-street shared-use path)
Transit	n/a (off-street shared-use path)
Shade	No
Have counts been collected by H-GAC at this location before?	No

NOTE: Counter stopped collecting data on Thursday, May 14 before 11:00 a.m., which may have been battery related.

Location Information: Map



Location Information: Photos



Image 1: Bridge over White Oak Bayou
(looking east)

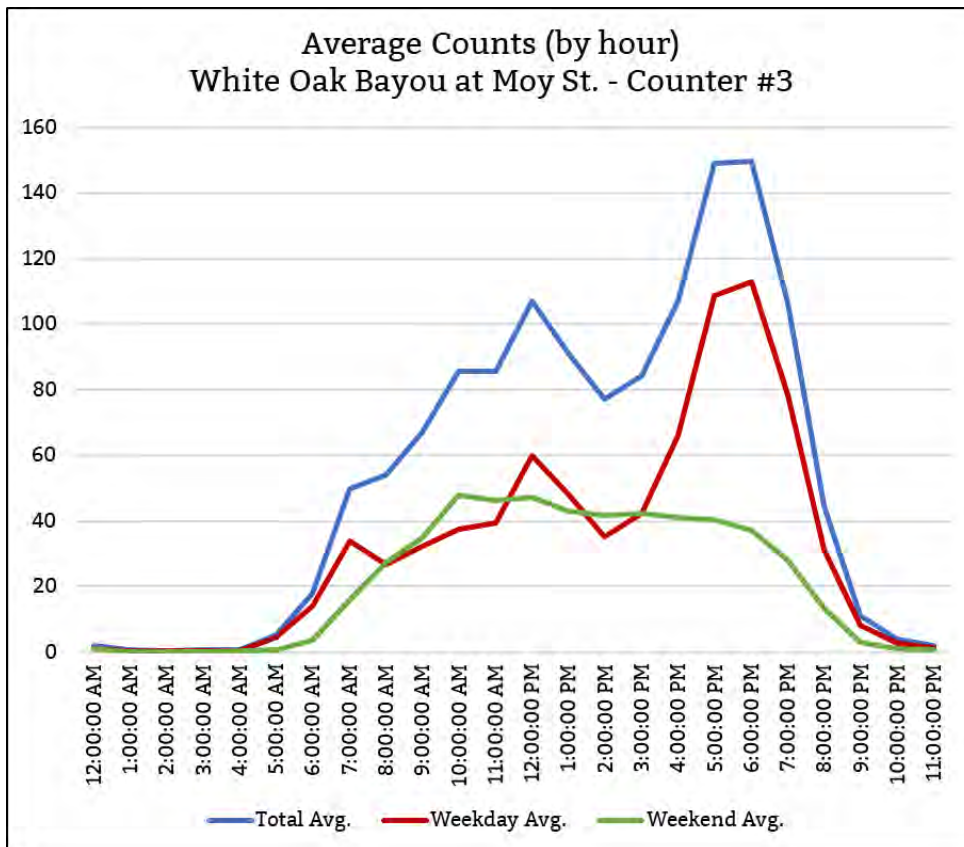


Image 2: Bridge over White Oak Bayou
(zoomed)

COUNTS BY DATE		
Date	Counted	Climate
5/1/20	1106	88,63,0.00in
5/2/20	1930	89,73,0.00in
5/3/20	1947	91,72,0.00in
5/4/20	1398	93,74,0.00in
5/5/20	967	86,75,0.25in
5/6/20	1777	85,60,0.00in
5/7/20	1290	92,67,0.00in
5/8/20	806	73,61,0.00in
5/9/20	1768	82,56,0.00in
5/10/20	1608	84,58,0.00in
5/11/20	1276	85,66,0.00in
5/12/20	1081	86,72,0.02in
5/13/20	1113	89,71,0.02in
5/14/20	194	90,70,0.07in
Total	18261	

DAILY USAGE	
Avg. Daily	1304
Avg. Weekday	1101
Avg. Weekend	1813

* Grey represents Weekend days

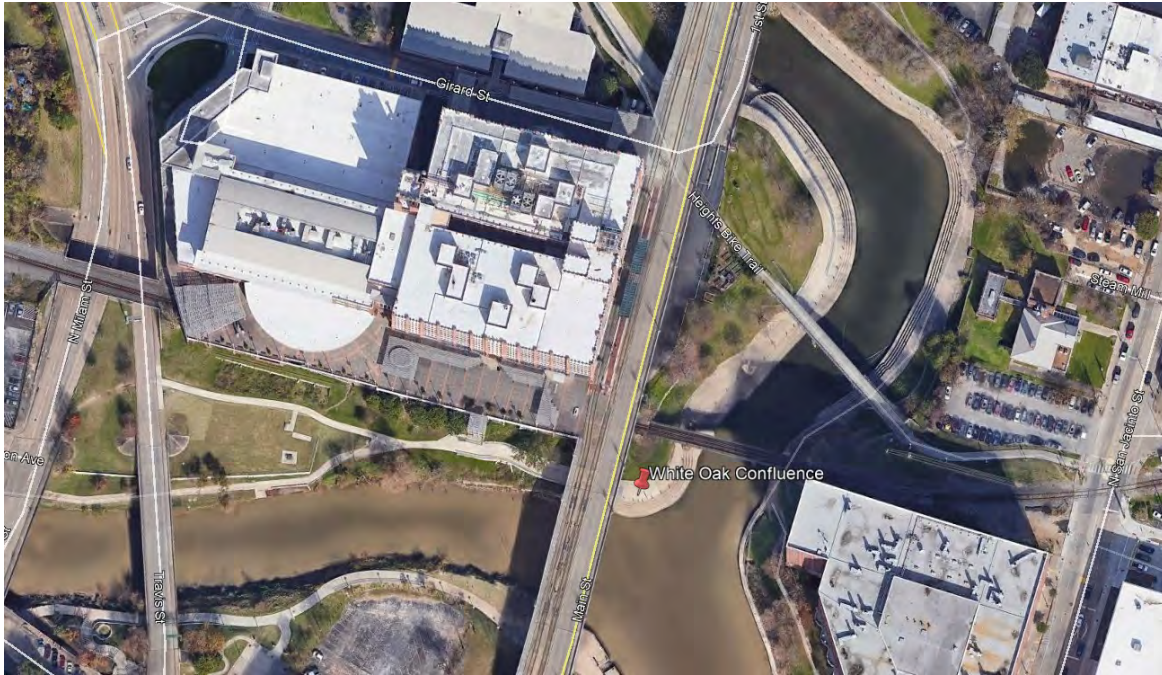


Counter #4

White Oak Bayou: Confluence with Buffalo Bayou (T4WOBBB)

Location Information	
Location Name	White Oak Bayou: Confluence with Buffalo Bayou
Location Description	White Oak Bayou (north side of Buffalo Bayou)
Jurisdiction	City of Houston
Agency Deployed	Houston Parks Board
What object was device secured to?	Sign post
Date/Time Installed	Friday, May 1, 2020 (1:45 p.m.)
Date/Time Retrieved	Thursday, May 18, 2020 (11:50 a.m.)
Sidewalk Width	14'
Buffer Width	n/a (sign embedded in the path)
Street Width	n/a (off-street shared-use path)
Parallel Parking	n/a (off-street shared-use path)
Landscaping or Trees	No
Sidewalk Pavement Type	Concrete
ADA Ramps	Yes
Sidewalk Condition	Excellent
Speed Limit	n/a (off-street shared-use path)
Street Lighting	No
Street Traffic Volume	n/a (off-street shared-use path)
Transit	n/a (off-street shared-use path)
Shade	No
Have counts been collected by H-GAC at this location before?	No

Location Information: Map



Location Information: Photos



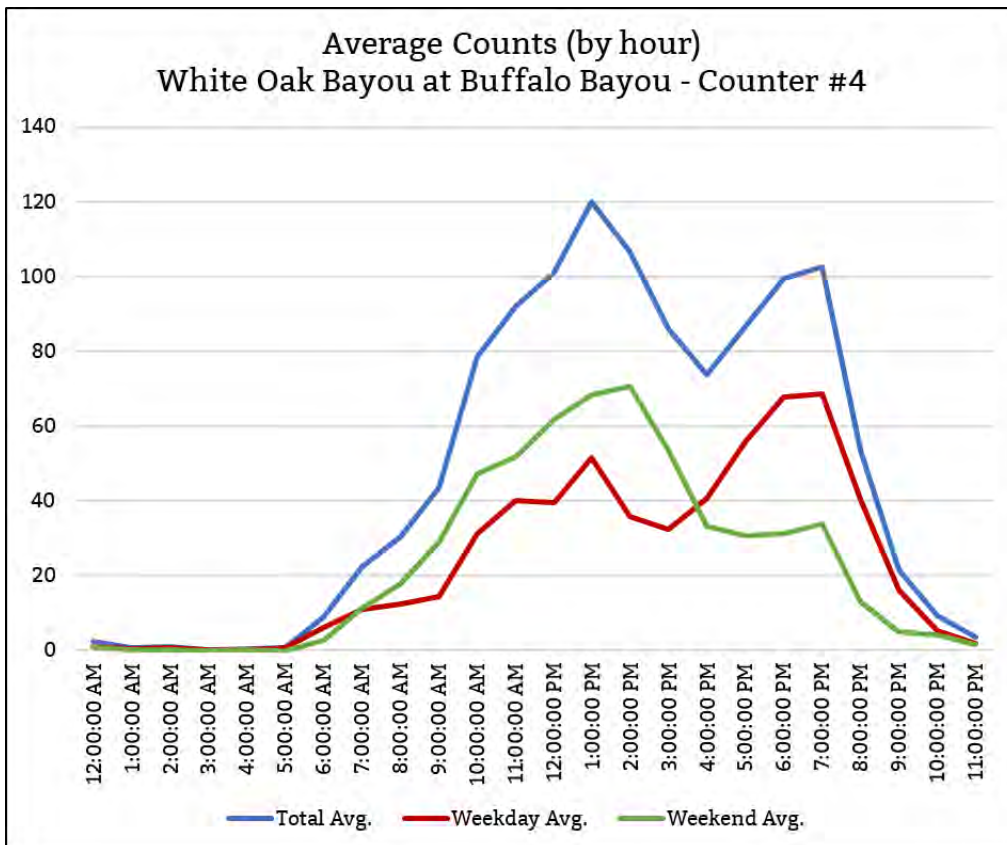
Image 1: Sign by path
(looking east)



Image 2: Sign by path
(zoomed)

COUNTS BY DATE		
Date	Counted	Climate
5/1/20	1155	88,63,0.00in
5/2/20	2028	89,73,0.00in
5/3/20	1952	91,72,0.00in
5/4/20	1092	93,74,0.00in
5/5/20	881	86,75,0.25in
5/6/20	1395	85,60,0.00in
5/7/20	1175	92,67,0.00in
5/8/20	819	73,61,0.00in
5/9/20	2413	82,56,0.00in
5/10/20	2022	84,58,0.00in
5/11/20	1398	85,66,0.00in
5/12/20	958	86,72,0.02in
5/13/20	542	89,71,0.02in
5/14/20	511	90,70,0.07in
5/15/20	269	82,68,0.38in
5/16/20	459	88,67,0.01in
5/17/20	1405	94,65,0.00in
5/18/20	197	94,71,0.00in
Total	20671	

DAILY USAGE	
Avg. Daily	1148
Avg. Weekday	866
Avg. Weekend	1713

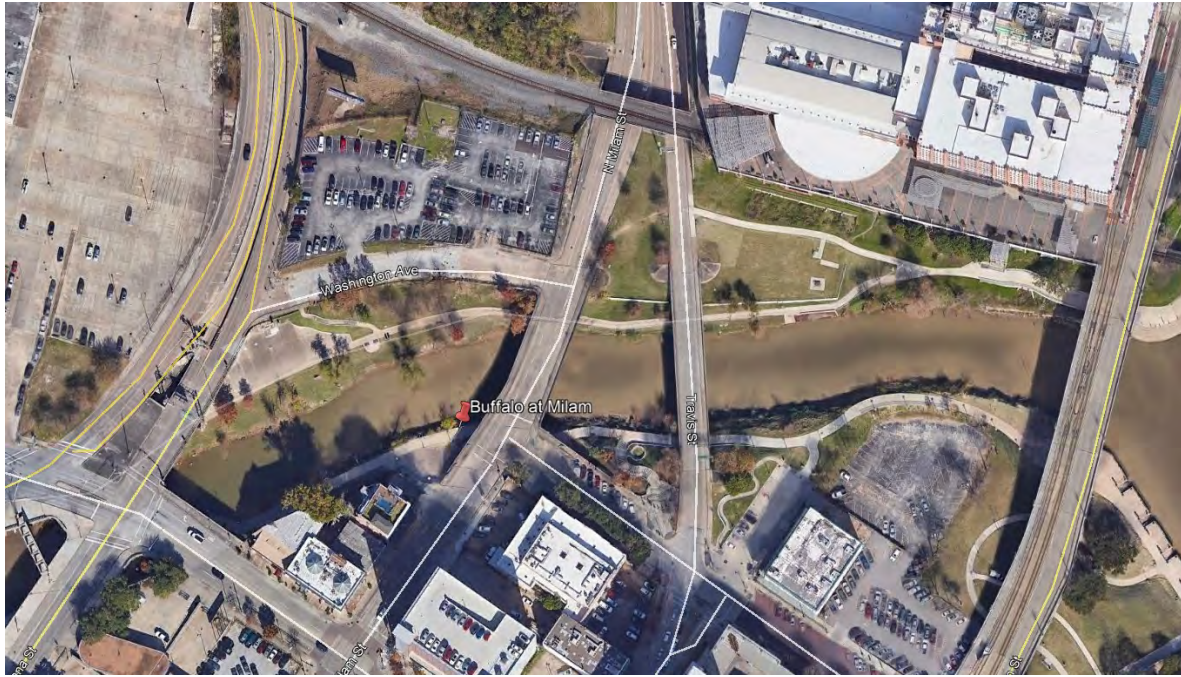


Counter #5

Buffalo Bayou: at Travis (T5BBTRAVIS)

Location Information	
Location Name	Buffalo Bayou: at Travis
Location Description	Buffalo Bayou under Travis St. (south side of Buffalo Bayou)
Jurisdiction	City of Houston
Agency Deployed	Houston Parks Board
What object was device secured to?	Railing
Date/Time Installed	Friday, May 1, 2020 (1:45 p.m.)
Date/Time Retrieved	Thursday, May 18, 2020 (11:45 a.m.)
Sidewalk Width	10'
Buffer Width	n/a (counter about 1' from path)
Street Width	n/a (off-street shared-use path)
Parallel Parking	n/a (off-street shared-use path)
Landscaping or Trees	Yes
Sidewalk Pavement Type	Concrete
ADA Ramps	Yes
Sidewalk Condition	Excellent
Speed Limit	n/a (off-street shared-use path)
Street Lighting	No
Street Traffic Volume	n/a (off-street shared-use path)
Transit	n/a (off-street shared-use path)
Shade	Yes
Have counts been collected by H-GAC at this location before?	No

Location Information: Map



Location Information: Photos



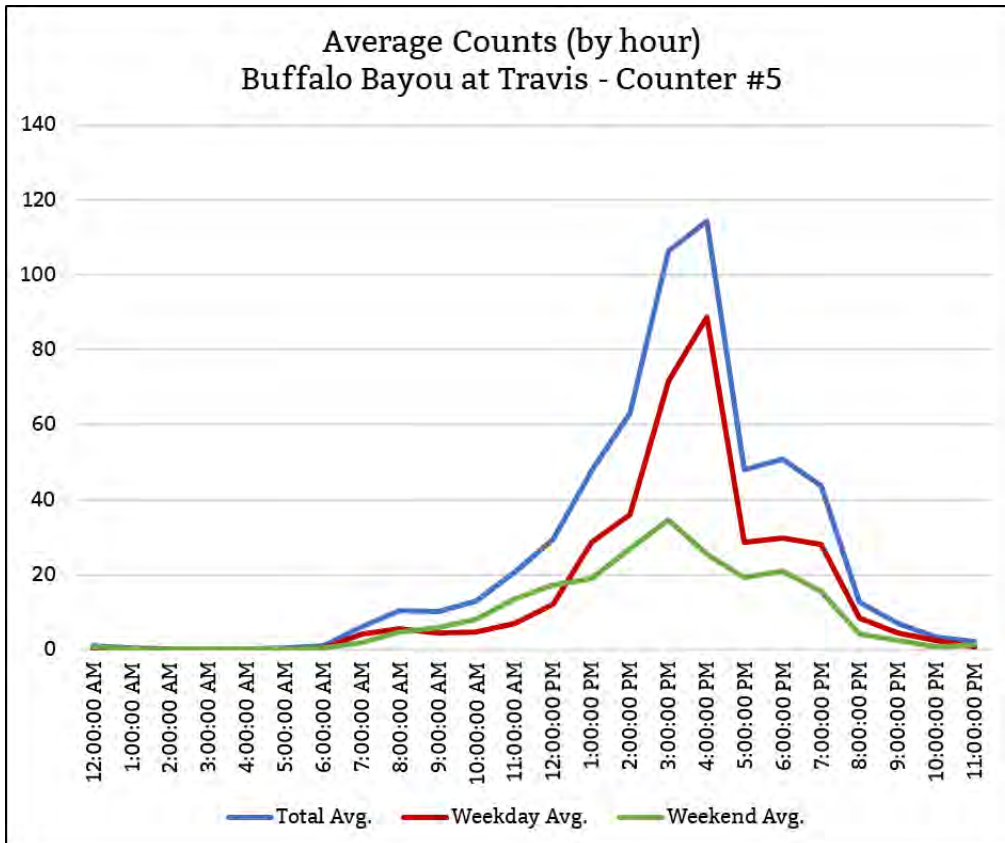
Image 1: Railing by path
(looking east)



Image 2: Railing by path
(zoomed looking west)

COUNTS BY DATE		
Date	Counted	Climate
5/1/20	344	88,63,0.00in
5/2/20	585	89,73,0.00in
5/3/20	595	91,72,0.00in
5/4/20	333	93,74,0.00in
5/5/20	235	86,75,0.25in
5/6/20	441	85,60,0.00in
5/7/20	321	92,67,0.00in
5/8/20	182	73,61,0.00in
5/9/20	469	82,56,0.00in
5/10/20	588	84,58,0.00in
5/11/20	496	85,66,0.00in
5/12/20	321	86,72,0.02in
5/13/20	270	89,71,0.02in
5/14/20	3614	90,70,0.07in
5/15/20	39	82,68,0.38in
5/16/20	668	88,67,0.01in
5/17/20	1116	94,65,0.00in
5/18/20	25	94,71,0.00in
Total	10642	

DAILY USAGE	
Avg. Daily	591
Avg. Weekday	552
Avg. Weekend	670



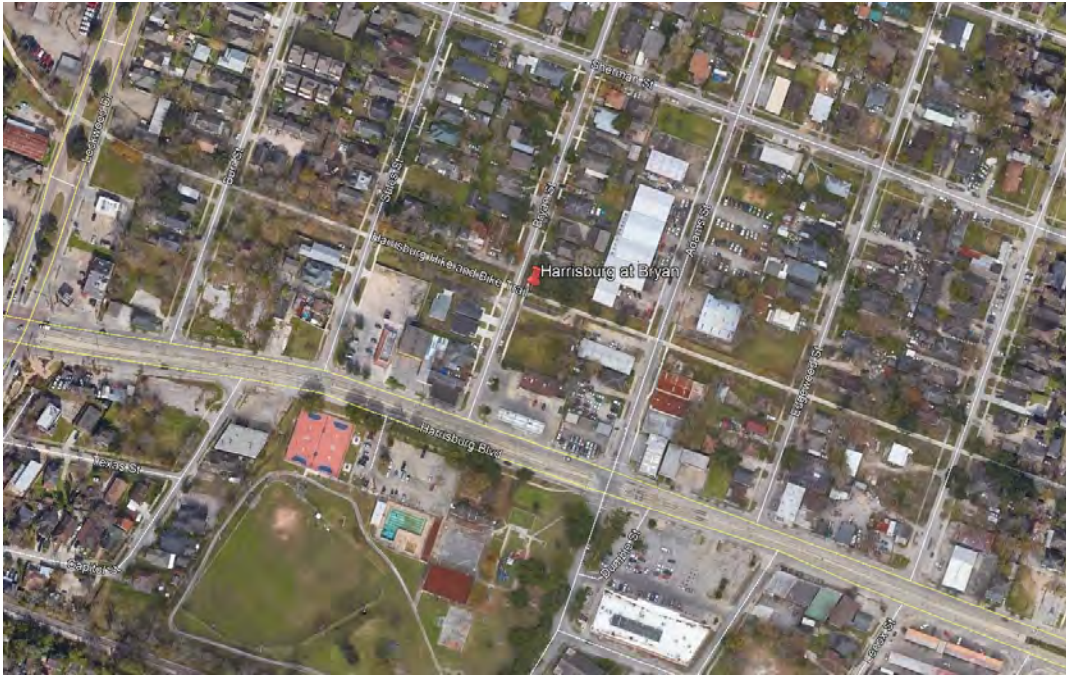
Counter #6

Harrisburg Trail: at Bryan St. (T6HARRISBURGSUNSET)

NOTE: This location is not part of the Bayou Greenways trail system, but was included in the study at the request of H-GAC.

Location Information	
Location Name	Harrisburg Trail: at Bryan St.
Location Description	Intersection of the Harrisburg-Sunset Trail with Bryan Street
Jurisdiction	City of Houston
Agency Deployed	Houston Parks Board
What object was device secured to?	Sign post
Date/Time Installed	Friday, May 2, 2020 (10:35 a.m.)
Date/Time Retrieved	Thursday, May 18, 2020 (12:20 p.m.)
Sidewalk Width	10'
Buffer Width	n/a (counter about 3' from path)
Street Width	n/a (off-street shared-use path)
Parallel Parking	n/a (off-street shared-use path)
Landscaping or Trees	Yes
Sidewalk Pavement Type	Concrete
ADA Ramps	Yes
Sidewalk Condition	Excellent
Speed Limit	n/a (off-street shared-use path)
Street Lighting	No
Street Traffic Volume	n/a (off-street shared-use path)
Transit	n/a (off-street shared-use path)
Shade	Yes
Have counts been collected by H-GAC at this location before?	No

Location Information: Map



Location Information: Photos



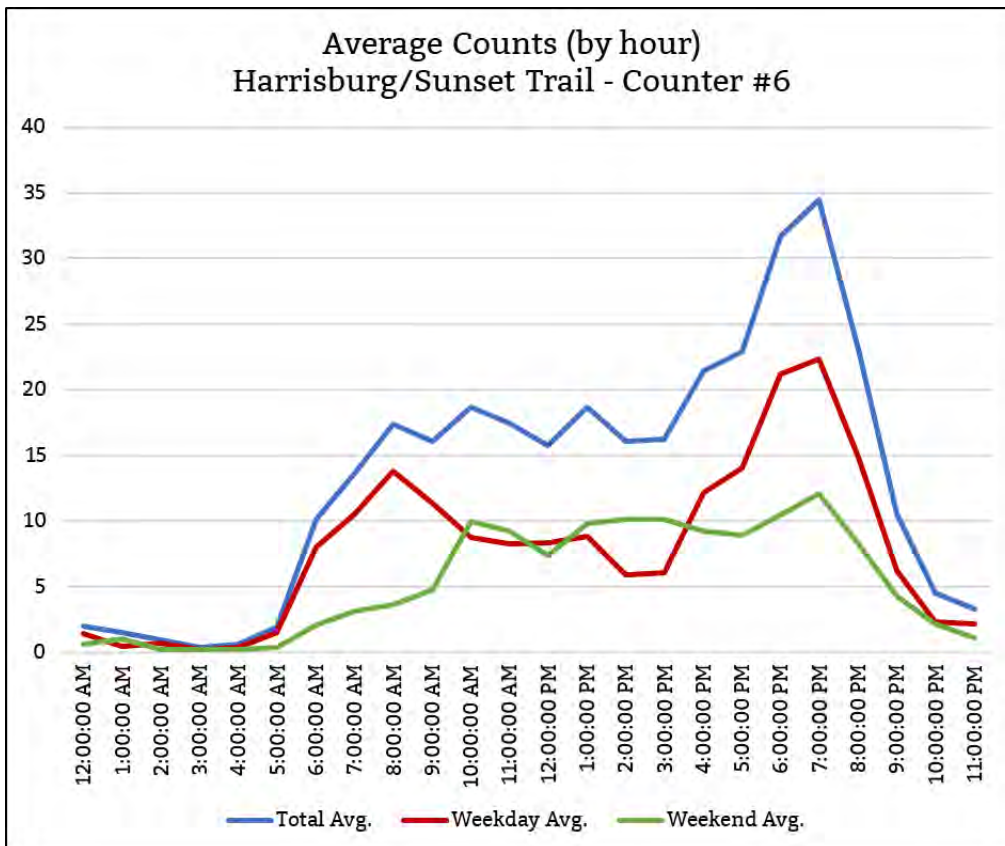
Image 1: Sign by path
(looking east)



Image 2: Sign by path (zoomed looking west)

COUNTS BY DATE		
Date	Counted	Climate
5/2/20	338	89,73,0.00in
5/3/20	408	91,72,0.00in
5/4/20	399	93,74,0.00in
5/5/20	235	86,75,0.25in
5/6/20	371	85,60,0.00in
5/7/20	347	92,67,0.00in
5/8/20	271	73,61,0.00in
5/9/20	467	82,56,0.00in
5/10/20	420	84,58,0.00in
5/11/20	422	85,66,0.00in
5/12/20	341	86,72,0.02in
5/13/20	260	89,71,0.02in
5/14/20	308	90,70,0.07in
5/15/20	133	82,68,0.38in
5/16/20	242	88,67,0.01in
5/17/20	328	94,65,0.00in
5/18/20	142	94,71,0.00in
Total	5432	

DAILY USAGE	
Avg. Daily	320
Avg. Weekday	294
Avg. Weekend	367



Counter #3

White Oak Bayou: Ella (T3WOBELLA)

Location Information	
Location Name	White Oak Bayou: Ella
Location Description	White Oak Bayou (east of Ella Blvd.)
Jurisdiction	City of Houston
Agency Deployed	Houston Parks Board
What object was device secured to?	Tree
Date/Time Installed	Monday, May 18, 2020 (2:30 p.m.)
Date/Time Retrieved	Tuesday, June 2, 2020 (9:30 a.m.)
Sidewalk Width	10'
Buffer Width	n/a (counter about 8' from path)
Street Width	n/a (off-street shared-use path)
Parallel Parking	n/a (off-street shared-use path)
Landscaping or Trees	Yes
Sidewalk Pavement Type	Concrete
ADA Ramps	Yes
Sidewalk Condition	Excellent
Speed Limit	n/a (off-street shared-use path)
Street Lighting	No
Street Traffic Volume	n/a (off-street shared-use path)
Transit	n/a (off-street shared-use path)
Shade	Yes
Have counts been collected by H-GAC at this location before?	No

NOTE: Counter stopped collecting data on Wednesday, May 20 before 10:00 a.m.. The batteries had been changed during the previous period, when the counter stopped collecting as well. Although we were able to collect some data, it was determined the location would have to be studied in the future.

Location Information: Map



Location Information: Photos



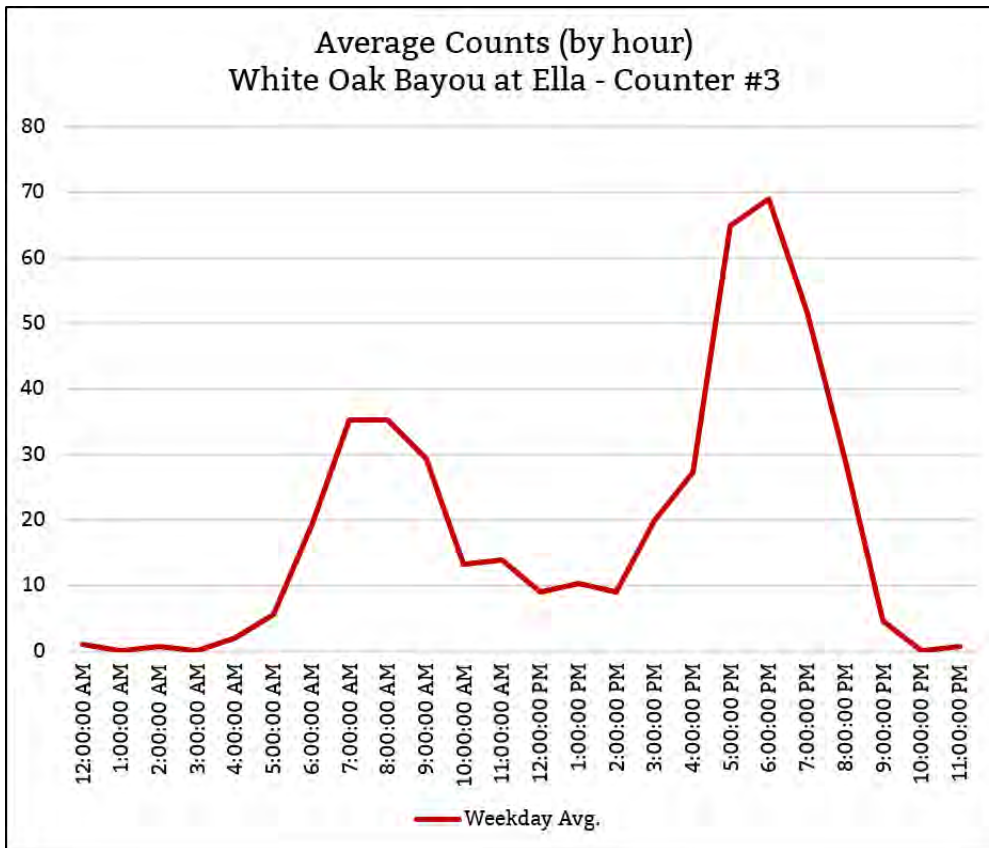
Image 1: Tree by path
(looking north)



Image 2: Tree by path
(zoomed)

COUNTS BY DATE		
Date	Counted	Climate
5/18/20	453	94,71,0.00in
5/19/20	748	95,72,0.00in
5/20/20	154	91,75,0.00in
Total	1355	

DAILY USAGE	
Avg. Daily	452
Avg. Weekday	452
Avg. Weekend	N/A

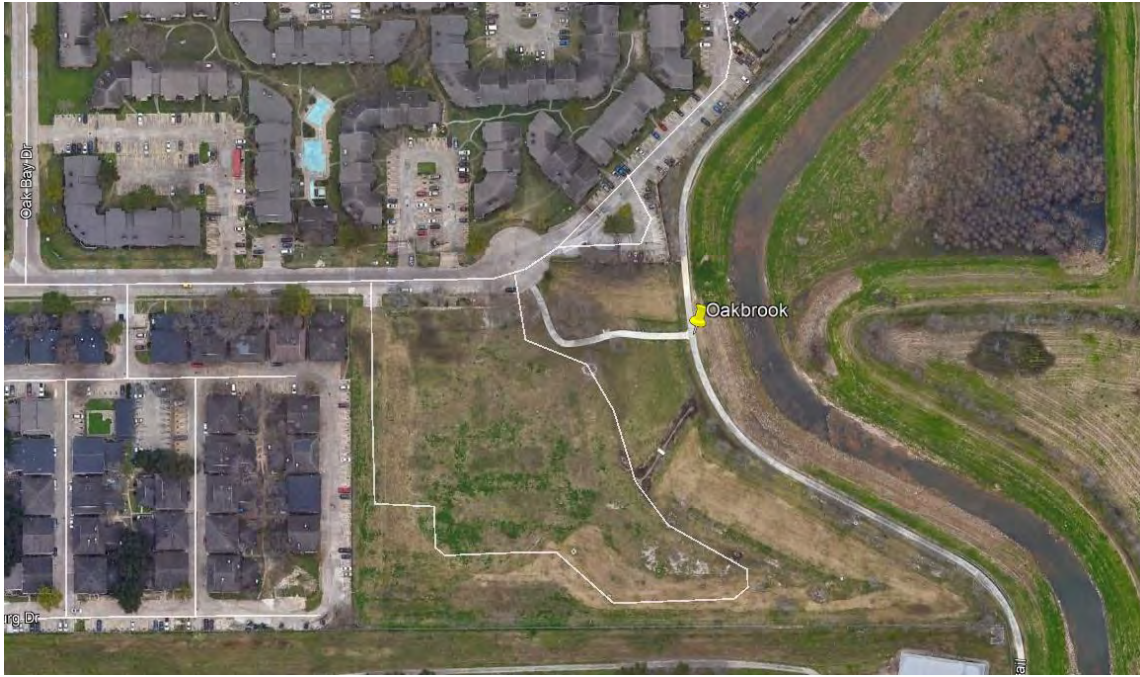


Counter #4

White Oak Bayou: Oakbrook (T4WOBOAKBROOK)

Location Information	
Location Name	White Oak Bayou: Oakbrook
Location Description	White Oak Bayou (east end of Desoto St.)
Jurisdiction	City of Houston
Agency Deployed	Houston Parks Board
What object was device secured to?	Sign by path
Date/Time Installed	Monday, May 18, 2020 (3:00 p.m.)
Date/Time Retrieved	Tuesday, June 2, 2020 (9:40 a.m.)
Sidewalk Width	10'
Buffer Width	n/a (counter about 3' from path)
Street Width	n/a (off-street shared-use path)
Parallel Parking	n/a (off-street shared-use path)
Landscaping or Trees	No
Sidewalk Pavement Type	Concrete
ADA Ramps	Yes
Sidewalk Condition	Excellent
Speed Limit	n/a (off-street shared-use path)
Street Lighting	No
Street Traffic Volume	n/a (off-street shared-use path)
Transit	n/a (off-street shared-use path)
Shade	No
Have counts been collected by H-GAC at this location before?	No

Location Information: Map



Location Information: Photos



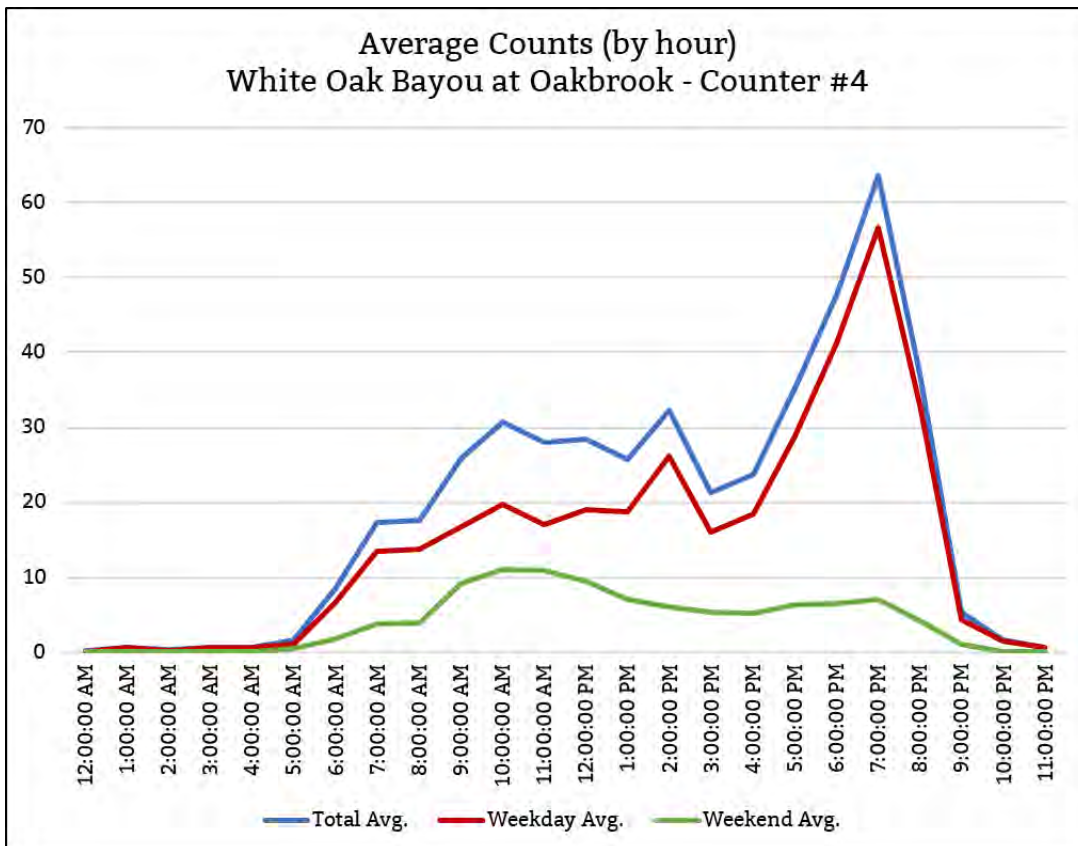
Image 1: Sign by path
(looking west)



Image 2: Sign by path
(zoomed looking south)

COUNTS BY DATE		
Date	Counted	Climate
5/18/20	661	94,71,0.00in
5/19/20	676	95,72,0.00in
5/20/20	650	91,75,0.00in
5/21/20	616	93,74,0.00in
5/22/20	486	92,79,0.00in
5/23/20	641	89,67,1.50in
5/24/20	350	84,66,0.13in
5/25/20	881	89,68,0.44in
5/26/20	653	90,65,0.63in
5/27/20	365	89,64,0.00in
5/28/20	136	89,69,0.00in
5/29/20	286	89,70,0.00in
5/30/20	422	88,73,0.11in
5/31/20	180	85,73,0.00in
6/1/20	238	92,72,0.00in
6/2/20	34	91,72,1.02in
Total	7275	

DAILY USAGE	
Avg. Daily	455
Avg. Weekday	474
Avg. Weekend	398



Counter #5

White Oak Bayou: Alabonson (T5WOBALABONSON)

Location Information	
Location Name	White Oak Bayou: Alabonson
Location Description	White Oak Bayou (near parking lot on Alabonson)
Jurisdiction	City of Houston
Agency Deployed	Houston Parks Board
What object was device secured to?	Dog Station by path
Date/Time Installed	Monday, May 18, 2020 (3:27 p.m.)
Date/Time Retrieved	Tuesday, June 2, 2020 (9:50 a.m.)
Sidewalk Width	10'
Buffer Width	n/a (counter about 2' from path)
Street Width	n/a (off-street shared-use path)
Parallel Parking	n/a (off-street shared-use path)
Landscaping or Trees	No
Sidewalk Pavement Type	Concrete
ADA Ramps	Yes
Sidewalk Condition	Excellent
Speed Limit	n/a (off-street shared-use path)
Street Lighting	No
Street Traffic Volume	n/a (off-street shared-use path)
Transit	n/a (off-street shared-use path)
Shade	No
Have counts been collected by H-GAC at this location before?	No

Location Information: Map



Location Information: Photos



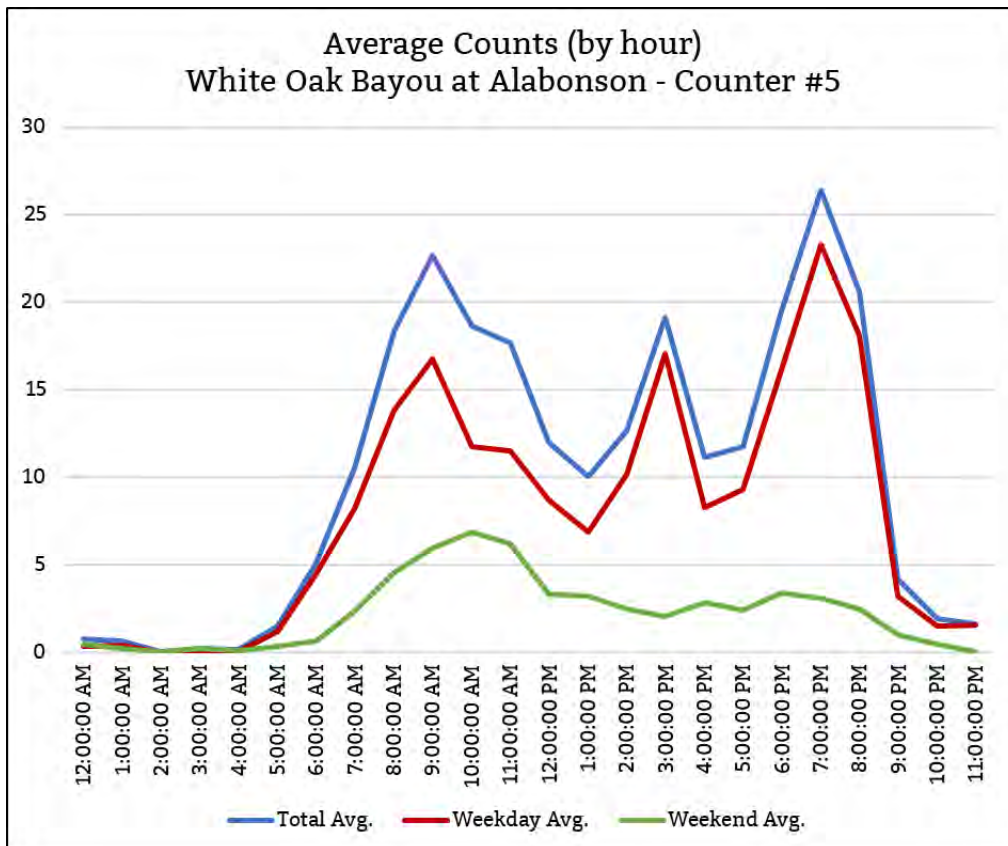
Image 1: Dog Station by path
(looking southwest)



Image 2: Dog Station by path
(zoomed looking west)

COUNTS BY DATE		
Date	Counted	Climate
5/18/20	314	94,71,0.00in
5/19/20	258	95,72,0.00in
5/20/20	219	91,75,0.00in
5/21/20	291	93,74,0.00in
5/22/20	230	92,79,0.00in
5/23/20	231	89,67,1.50in
5/24/20	130	84,66,0.13in
5/25/20	452	89,68,0.44in
5/26/20	339	90,65,0.63in
5/27/20	232	89,64,0.00in
5/28/20	260	89,69,0.00in
5/29/20	224	89,70,0.00in
5/30/20	299	88,73,0.11in
5/31/20	217	85,73,0.00in
6/1/20	204	92,72,0.00in
6/2/20	59	91,72,1.02in
Total	3959	

DAILY USAGE	
Avg. Daily	247
Avg. Weekday	257
Avg. Weekend	219



Counter #6

White Oak Bayou: Yale (T6WOBYALE)

Location Information	
Location Name	White Oak Bayou: Yale
Location Description	White Oak Bayou (Trail below Yale St.)
Jurisdiction	City of Houston
Agency Deployed	Houston Parks Board
What object was device secured to?	Railing by path
Date/Time Installed	Monday, May 18, 2020 (3:27 p.m.)
Date/Time Retrieved	Tuesday, June 2, 2020 (9:50 a.m.)
Sidewalk Width	10'
Buffer Width	n/a (railing embedded in path)
Street Width	n/a (off-street shared-use path)
Parallel Parking	n/a (off-street shared-use path)
Landscaping or Trees	No
Sidewalk Pavement Type	Concrete
ADA Ramps	Yes
Sidewalk Condition	Excellent
Speed Limit	n/a (off-street shared-use path)
Street Lighting	No
Street Traffic Volume	n/a (off-street shared-use path)
Transit	n/a (off-street shared-use path)
Shade	No
Have counts been collected by H-GAC at this location before?	No

Location Information: Map



Location Information: Photos



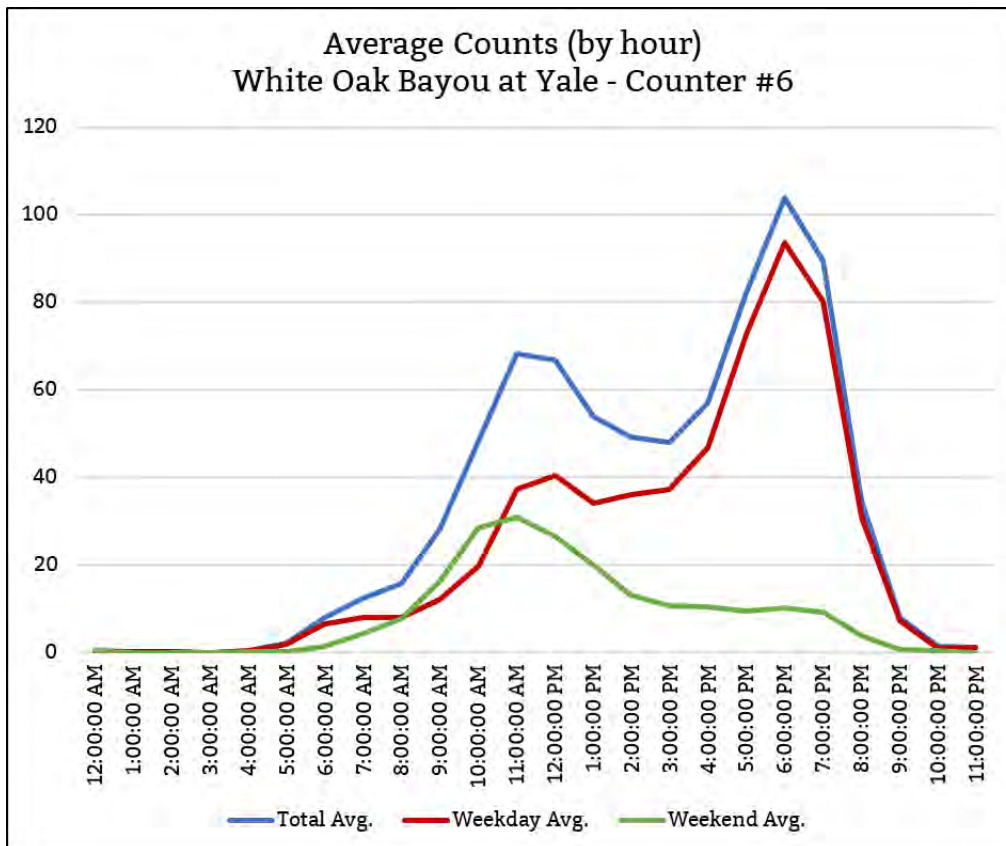
Image 1: Railing by path
(looking east)



Image 2: Railing by path
(zoomed looking west)

COUNTS BY DATE		
Date	Counted	Climate
5/18/20	816	94,71,0.00in
5/19/20	1068	95,72,0.00in
5/20/20	864	91,75,0.00in
5/21/20	762	93,74,0.00in
5/22/20	702	92,79,0.00in
5/23/20	870	89,67,1.50in
5/24/20	564	84,66,0.13in
5/25/20	1245	89,68,0.44in
5/26/20	986	90,65,0.63in
5/27/20	484	89,64,0.00in
5/28/20	840	89,69,0.00in
5/29/20	816	89,70,0.00in
5/30/20	1195	88,73,0.11in
5/31/20	634	85,73,0.00in
6/1/20	594	92,72,0.00in
6/2/20	36	91,72,1.02in
Total	12476	

DAILY USAGE	
Avg. Daily	780
Avg. Weekday	768
Avg. Weekend	816



Counter #3

Brays Bayou: Mason (T3BBMASON)

Location Information	
Location Name	Brays Bayou: Mason
Location Description	Brays Bayou in Mason Park (west side of bridge over bayou)
Jurisdiction	City of Houston
Agency Deployed	Houston Parks Board
What object was device secured to?	Tree
Date/Time Installed	Tuesday, June 2, 2020 (11:35 a.m.)
Date/Time Retrieved	Thursday, June 18, 2020 (5:20 a.m.)
Sidewalk Width	10'
Buffer Width	n/a (counter about 8' from path)
Street Width	n/a (off-street shared-use path)
Parallel Parking	n/a (off-street shared-use path)
Landscaping or Trees	Yes
Sidewalk Pavement Type	Concrete
ADA Ramps	Yes
Sidewalk Condition	Excellent
Speed Limit	n/a (off-street shared-use path)
Street Lighting	No
Street Traffic Volume	n/a (off-street shared-use path)
Transit	n/a (off-street shared-use path)
Shade	Yes
Have counts been collected by H-GAC at this location before?	No

NOTE: Counter was checked two days after installation to see if it was collecting data, and found that the batteries had died again. Batteries were replaced on June 4. On June 8 before 10:00 p.m. an unidentified person apparently tried to remove (steal) the counter, and in doing so moved it to a position no longer pointing at the trail. Although we were able to collect some data, it was determined the location would have to be studied in the future.

Location Information: Map



Location Information: Photos



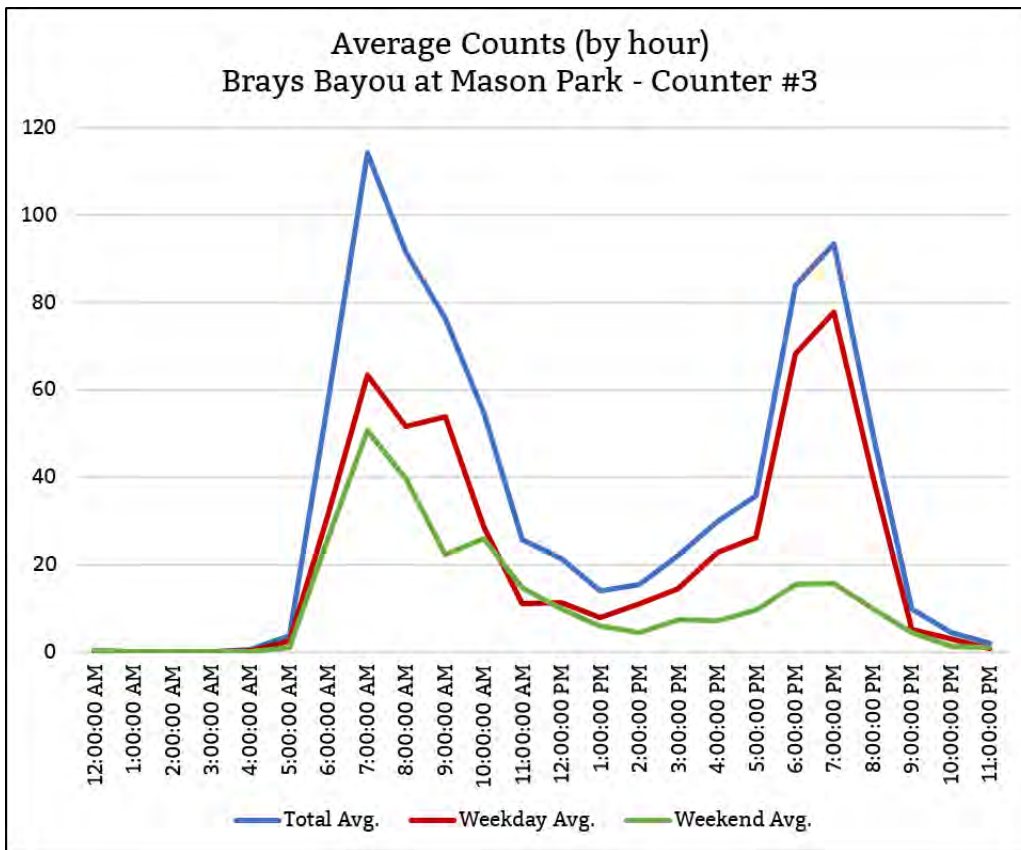
Image 1: Tree by path
(looking south)



Image 2: Tree by path
(zoomed)

COUNTS BY DATE		
Date	Counted	Climate
6/4/20	854	93,73,0.00in
6/5/20	1152	96,74,0.02in
6/6/20	743	95,75,0.00in
6/7/20	632	95,79,1.14in
6/8/20	656	97,80,0.00in
Total	4037	

DAILY USAGE	
Avg. Daily	807
Avg. Weekday	887
Avg. Weekend	688



Counter #4

Brays Bayou: University (T4BBUNIVERSITY)

Location Information	
Location Name	Brays Bayou: University
Location Description	Brays Bayou (east of the intersection of MLK and Wheeler)
Jurisdiction	City of Houston
Agency Deployed	Houston Parks Board
What object was device secured to?	Sign by path
Date/Time Installed	Tuesday, June 2, 2020 (12:20 p.m.)
Date/Time Retrieved	Thursday, June 18, 2020 (5:40 a.m.)
Sidewalk Width	10'
Buffer Width	n/a (counter about 2' from path)
Street Width	n/a (off-street shared-use path)
Parallel Parking	n/a (off-street shared-use path)
Landscaping or Trees	No
Sidewalk Pavement Type	Concrete
ADA Ramps	Yes
Sidewalk Condition	Excellent
Speed Limit	n/a (off-street shared-use path)
Street Lighting	No
Street Traffic Volume	n/a (off-street shared-use path)
Transit	n/a (off-street shared-use path)
Shade	No
Have counts been collected by H-GAC at this location before?	No

Location Information: Map



Location Information: Photos



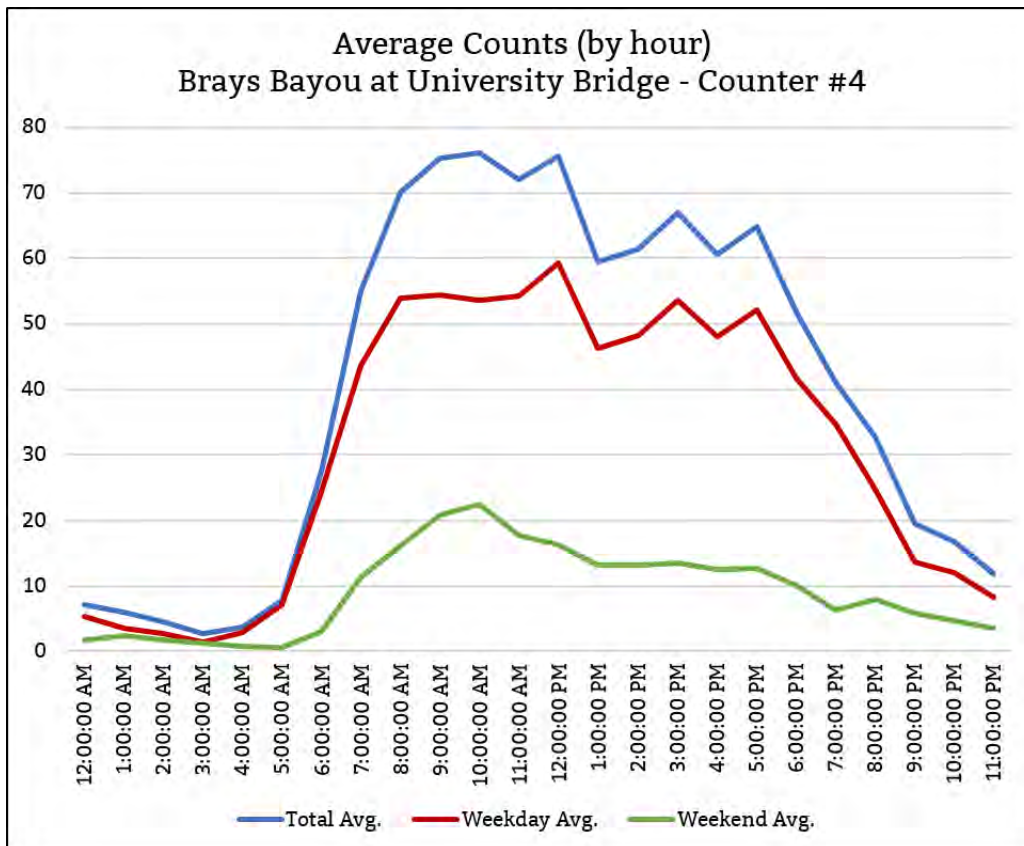
Image 1: Sign by path
(looking east)



Image 2: Sign by path
(zoomed)

COUNTS BY DATE		
Date	Counted	Climate
6/2/20	768	91,72,1.02in
6/3/20	854	94,72,0.10in
6/4/20	1060	93,73,0.00in
6/5/20	1132	96,74,0.02in
6/6/20	1042	95,75,0.00in
6/7/20	849	95,79,1.14in
6/8/20	1087	97,80,0.00in
6/9/20	990	94,70,0.09in
6/10/20	1233	92,66,0.00in
6/11/20	1209	91,66,0.00in
6/12/20	1149	92,69,0.00in
6/13/20	987	94,68,0.00in
6/14/20	873	94,73,0.00in
6/15/20	958	94,71,0.00in
6/16/20	1145	94,68,0.00in
6/17/20	1133	94,69,0.00in
6/18/20	35	91,74,0.13in
Total	16504	

DAILY USAGE	
Avg. Daily	971
Avg. Weekday	981
Avg. Weekend	938

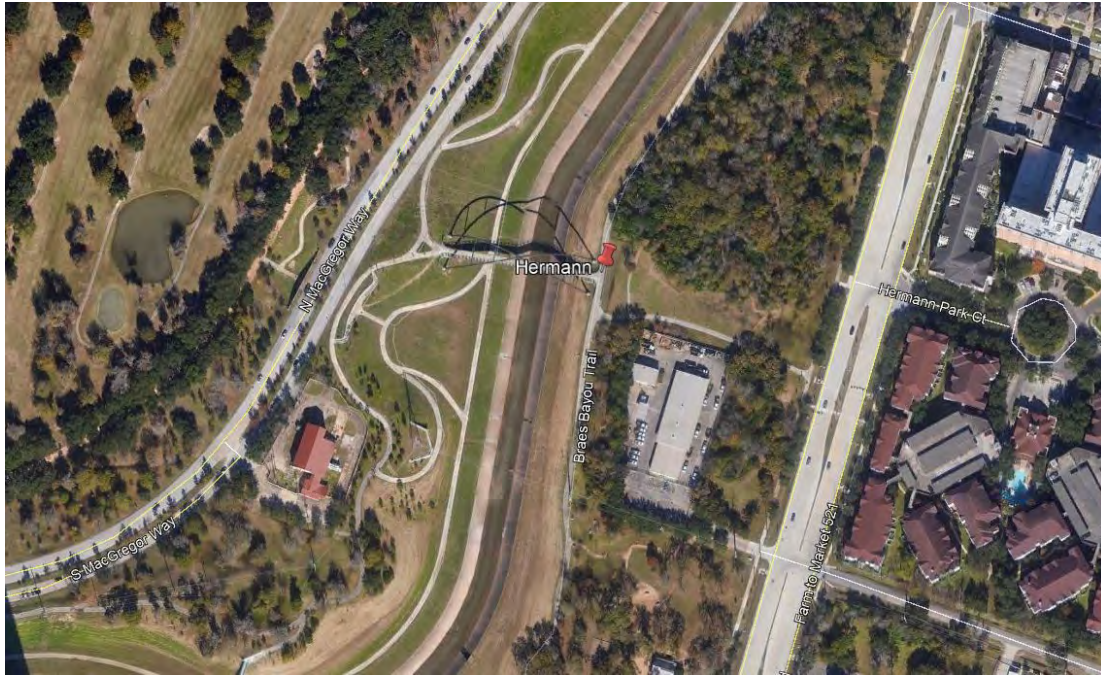


Counter #5

Brays Bayou: Hermann (T5BBHERMANN)

Location Information	
Location Name	Brays Bayou: Hermann
Location Description	Brays Bayou in Hermann Park (east side of the bayou near the Bill Coates bridge)
Jurisdiction	City of Houston
Agency Deployed	Houston Parks Board
What object was device secured to?	Tree
Date/Time Installed	Tuesday, June 2, 2020 (12:45 p.m.)
Date/Time Retrieved	Thursday, June 18, 2020 (6:15 a.m.)
Sidewalk Width	10'
Buffer Width	n/a (counter about 8' from path)
Street Width	n/a (off-street shared-use path)
Parallel Parking	n/a (off-street shared-use path)
Landscaping or Trees	Yes
Sidewalk Pavement Type	Concrete
ADA Ramps	Yes
Sidewalk Condition	Excellent
Speed Limit	n/a (off-street shared-use path)
Street Lighting	No
Street Traffic Volume	n/a (off-street shared-use path)
Transit	n/a (off-street shared-use path)
Shade	Yes
Have counts been collected by H-GAC at this location before?	No

Location Information: Map



Location Information: Photos



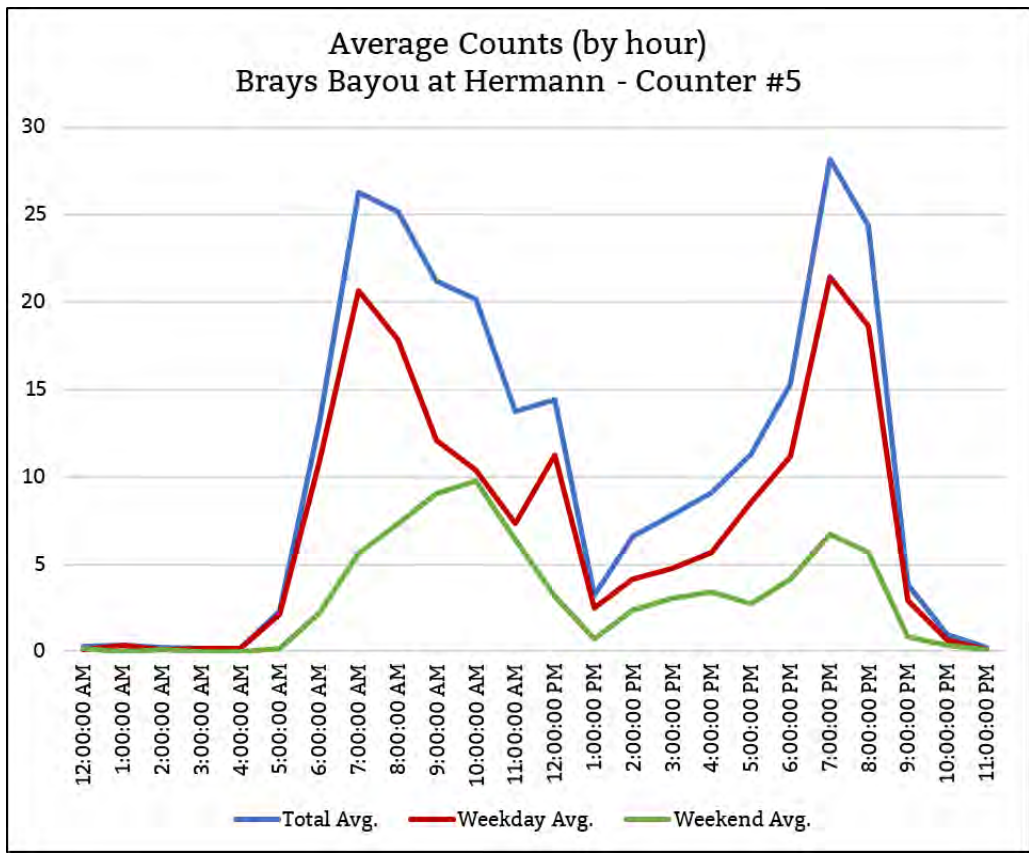
Image 1: Tree by path
(looking north)



Image 2: Tree by path
(zoomed)

COUNTS BY DATE		
Date	Counted	Climate
6/2/20	260	91,72,1.02in
6/3/20	252	94,72,0.10in
6/4/20	228	93,73,0.00in
6/5/20	252	96,74,0.02in
6/6/20	250	95,75,0.00in
6/7/20	261	95,79,1.14in
6/8/20	154	97,80,0.00in
6/9/20	220	94,70,0.09in
6/10/20	293	92,66,0.00in
6/11/20	351	91,66,0.00in
6/12/20	277	92,69,0.00in
6/13/20	379	94,68,0.00in
6/14/20	374	94,73,0.00in
6/15/20	254	94,71,0.00in
6/16/20	302	94,68,0.00in
6/17/20	320	94,69,0.00in
6/18/20	25	91,74,0.13in
Total	4452	

DAILY USAGE	
Avg. Daily	262
Avg. Weekday	245
Avg. Weekend	316



Counter #6

Brays Bayou: Lookout (T6BBLOOKOUT)

Location Information	
Location Name	Brays Bayou: Lookout
Location Description	Brays Bayou near the exercise pavilion (west of Lookout Ct.)
Jurisdiction	City of Houston
Agency Deployed	Houston Parks Board
What object was device secured to?	Tree
Date/Time Installed	Tuesday, June 2, 2020 (1:12 p.m.)
Date/Time Retrieved	Thursday, June 18, 2020 (6:55 a.m.)
Sidewalk Width	10'
Buffer Width	n/a (counter about 2' from path)
Street Width	n/a (off-street shared-use path)
Parallel Parking	n/a (off-street shared-use path)
Landscaping or Trees	Yes
Sidewalk Pavement Type	Concrete
ADA Ramps	Yes
Sidewalk Condition	Excellent
Speed Limit	n/a (off-street shared-use path)
Street Lighting	No
Street Traffic Volume	n/a (off-street shared-use path)
Transit	n/a (off-street shared-use path)
Shade	Yes
Have counts been collected by H-GAC at this location before?	No

Location Information: Map



Location Information: Photos



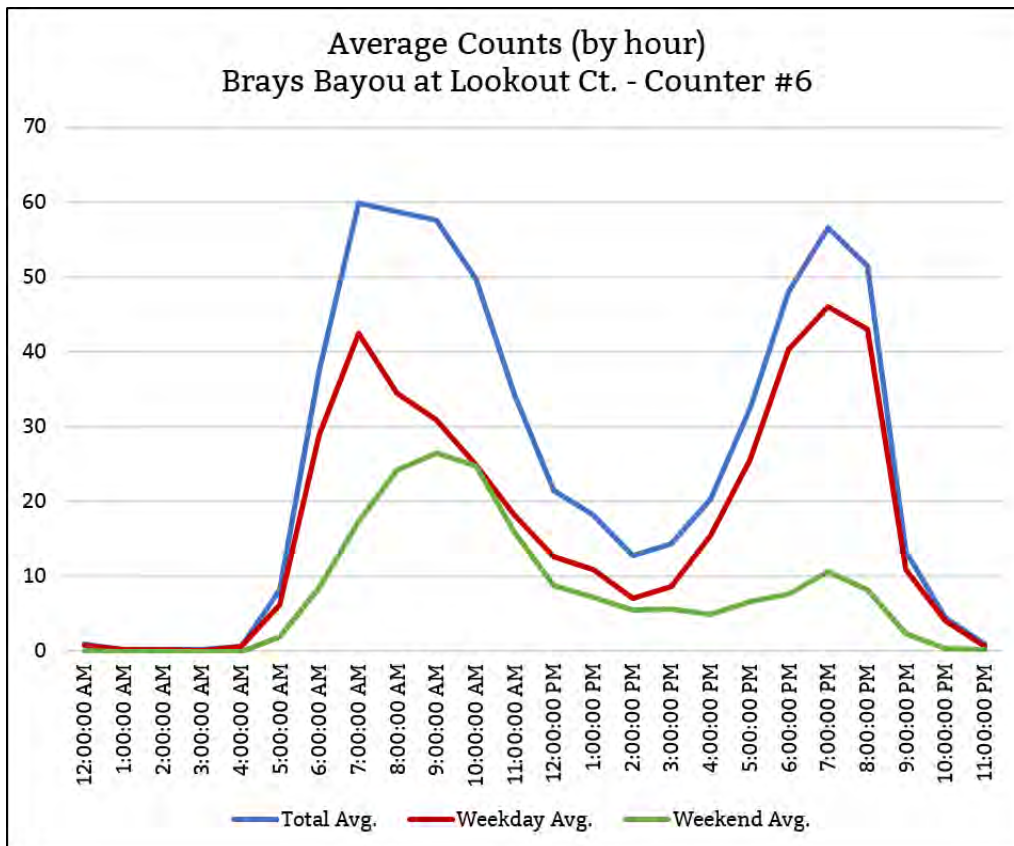
Image 1: Tree by path
(looking south)



Image 2: Tree by path
(zoomed looking east)

COUNTS BY DATE		
Date	Counted	Climate
6/2/20	353	91,72,1.02in
6/3/20	554	94,72,0.10in
6/4/20	596	93,73,0.00in
6/5/20	539	96,74,0.02in
6/6/20	669	95,75,0.00in
6/7/20	570	95,79,1.14in
6/8/20	418	97,80,0.00in
6/9/20	456	94,70,0.09in
6/10/20	811	92,66,0.00in
6/11/20	1003	91,66,0.00in
6/12/20	803	92,69,0.00in
6/13/20	1030	94,68,0.00in
6/14/20	941	94,73,0.00in
6/15/20	656	94,71,0.00in
6/16/20	864	94,68,0.00in
6/17/20	705	94,69,0.00in
6/18/20	82	91,74,0.13in
Total	11050	

DAILY USAGE	
Avg. Daily	650
Avg. Weekday	603
Avg. Weekend	803



Counter #3

Sims Bayou: Reveille (T3SBREVEILLE)

Location Information	
Location Name	Sims Bayou: Reveille
Location Description	Sims Bayou in Reveille Park (north side of the bayou)
Jurisdiction	City of Houston
Agency Deployed	Houston Parks Board
What object was device secured to?	Tree
Date/Time Installed	Thursday, June 18, 2020 (10:10 a.m.)
Date/Time Retrieved	Thursday, July 2, 2020 (5:15 a.m.)
Sidewalk Width	10'
Buffer Width	n/a (counter about 8' from path)
Street Width	n/a (off-street shared-use path)
Parallel Parking	n/a (off-street shared-use path)
Landscaping or Trees	Yes
Sidewalk Pavement Type	Asphalt
ADA Ramps	Yes
Sidewalk Condition	Fair
Speed Limit	n/a (off-street shared-use path)
Street Lighting	No
Street Traffic Volume	n/a (off-street shared-use path)
Transit	n/a (off-street shared-use path)
Shade	Yes
Have counts been collected by H-GAC at this location before?	No

Location Information: Map



Location Information: Photos



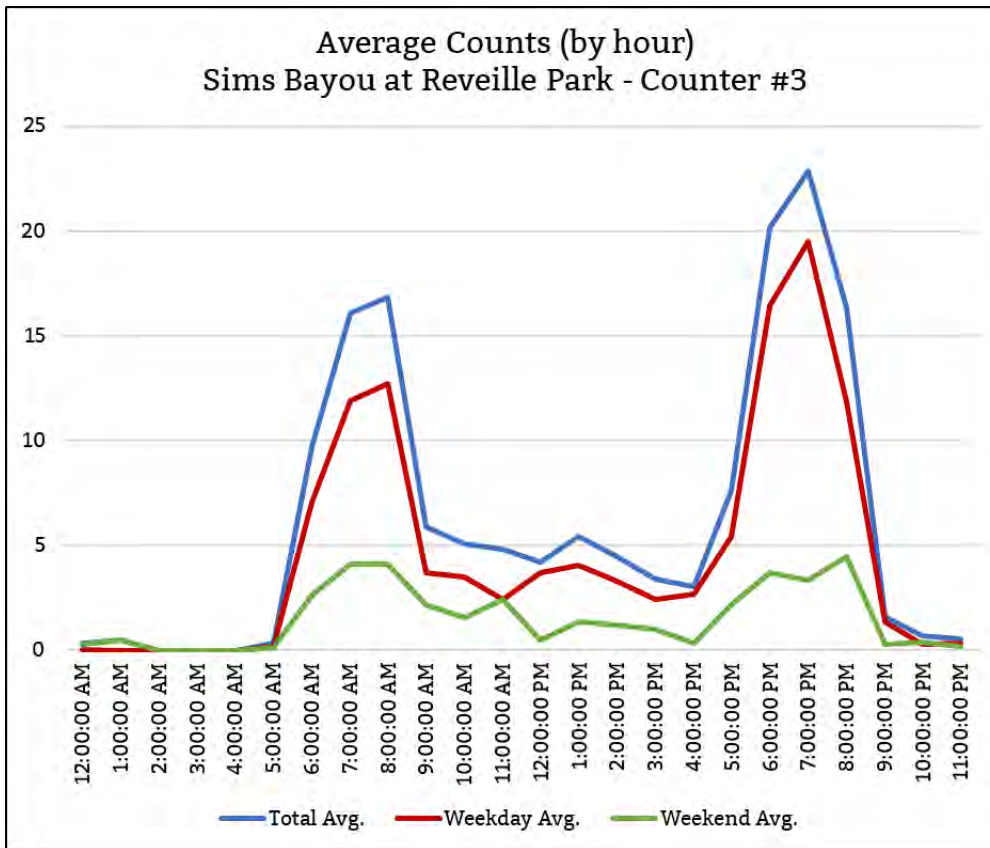
Image 1: Tree by path
(zoomed looking west)



Image 2: Tree by path
(looking west)

COUNTS BY DATE		
Date	Counted	Climate
6/18/20	165	90,71,0.00in
6/19/20	101	91,74,0.13in
6/20/20	106	93,74,0.00in
6/21/20	82	82,70,1.22in
6/22/20	157	90,70,0.00in
6/23/20	225	88,73,0.62in
6/24/20	137	87,73,1.31in
6/25/20	174	86,76,0.00in
6/26/20	189	91,79,0.00in
6/27/20	176	92,80,0.00in
6/28/20	157	92,82,0.00in
6/29/20	175	94,82,0.00in
6/30/20	127	95,82,0.00in
7/1/20	133	97,82,0.00in
Total	2104	

DAILY USAGE	
Avg. Daily	150
Avg. Weekday	158
Avg. Weekend	130



Counter #4

Sims Bayou: MLK (T4SBMLK)

Location Information	
Location Name	Sims Bayou: MLK
Location Description	Brays Bayou (north end of bridge crossing the bayou)
Jurisdiction	City of Houston
Agency Deployed	Houston Parks Board
What object was device secured to?	Tree
Date/Time Installed	Thursday, June 18, 2020 (9:40 a.m.)
Date/Time Retrieved	Thursday, July 2, 2020 (5:30 a.m.)
Sidewalk Width	10'
Buffer Width	n/a (counter about 6' from path)
Street Width	n/a (off-street shared-use path)
Parallel Parking	n/a (off-street shared-use path)
Landscaping or Trees	Yes
Sidewalk Pavement Type	Concrete
ADA Ramps	Yes
Sidewalk Condition	Excellent
Speed Limit	n/a (off-street shared-use path)
Street Lighting	No
Street Traffic Volume	n/a (off-street shared-use path)
Transit	n/a (off-street shared-use path)
Shade	Yes
Have counts been collected by H-GAC at this location before?	No

Location Information: Map



Location Information: Photos



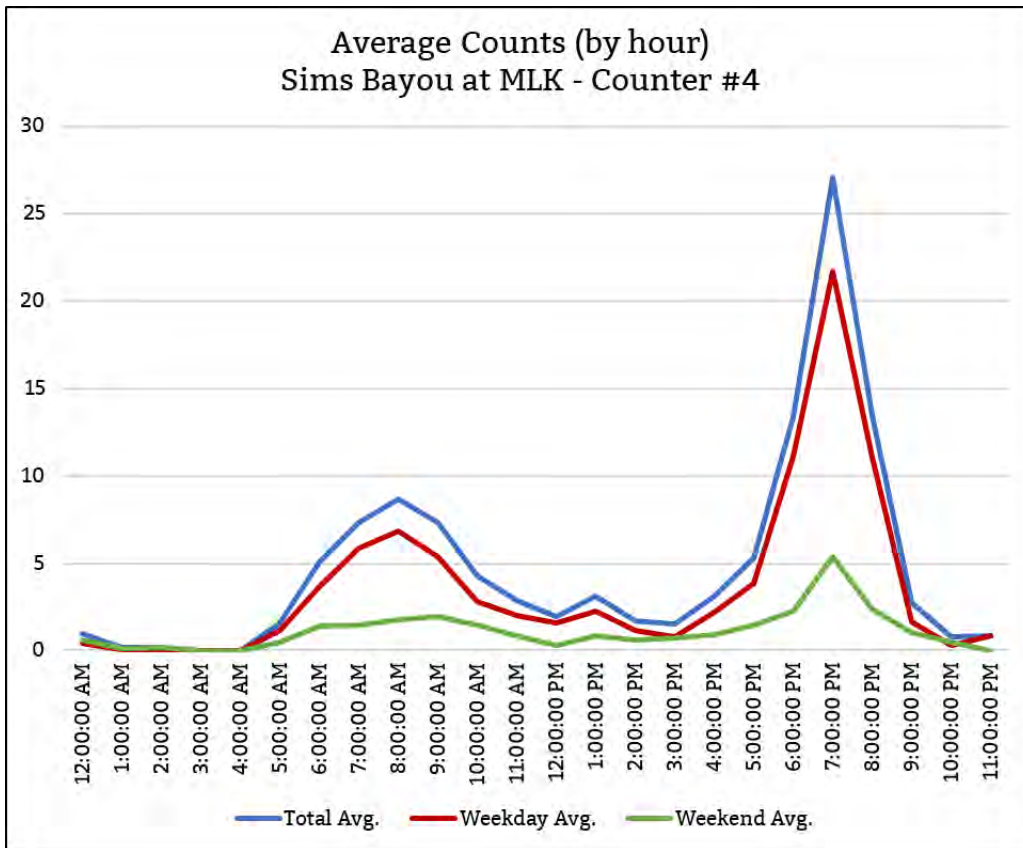
Image 1: Tree by path
(looking northeast)



Image 2: Tree by path
(zoomed)

COUNTS BY DATE		
Date	Counted	Climate
6/18/20	141	90,71,0.00in
6/19/20	184	91,74,0.13in
6/20/20	113	93,74,0.00in
6/21/20	85	82,70,1.22in
6/22/20	147	90,70,0.00in
6/23/20	127	88,73,0.62in
6/24/20	125	87,73,1.31in
6/25/20	91	86,76,0.00in
6/26/20	75	91,79,0.00in
6/27/20	107	92,80,0.00in
6/28/20	98	92,82,0.00in
6/29/20	112	94,82,0.00in
6/30/20	140	95,82,0.00in
7/1/20	160	97,82,0.00in
Total	1705	

DAILY USAGE	
Avg. Daily	122
Avg. Weekday	130
Avg. Weekend	101



Counter #5

Sims Bayou: Bayberry (T5SBBAYBERRY)

Location Information	
Location Name	Sims Bayou: Bayberry
Location Description	Brays Bayou in Hermann Park (east side of the bayou near the Bill Coates bridge)
Jurisdiction	City of Houston
Agency Deployed	Houston Parks Board
What object was device secured to?	Tree
Date/Time Installed	Thursday, June 18, 2020 (9:10 a.m.)
Date/Time Retrieved	Thursday, July 2, 2020 (6:20 a.m.)
Sidewalk Width	10'
Buffer Width	n/a (tree about 6' from path)
Street Width	n/a (off-street shared-use path)
Parallel Parking	n/a (off-street shared-use path)
Landscaping or Trees	Yes
Sidewalk Pavement Type	Concrete
ADA Ramps	Yes
Sidewalk Condition	Excellent
Speed Limit	n/a (off-street shared-use path)
Street Lighting	No
Street Traffic Volume	n/a (off-street shared-use path)
Transit	n/a (off-street shared-use path)
Shade	Yes
Have counts been collected by H-GAC at this location before?	No

Location Information: Map



Location Information: Photos



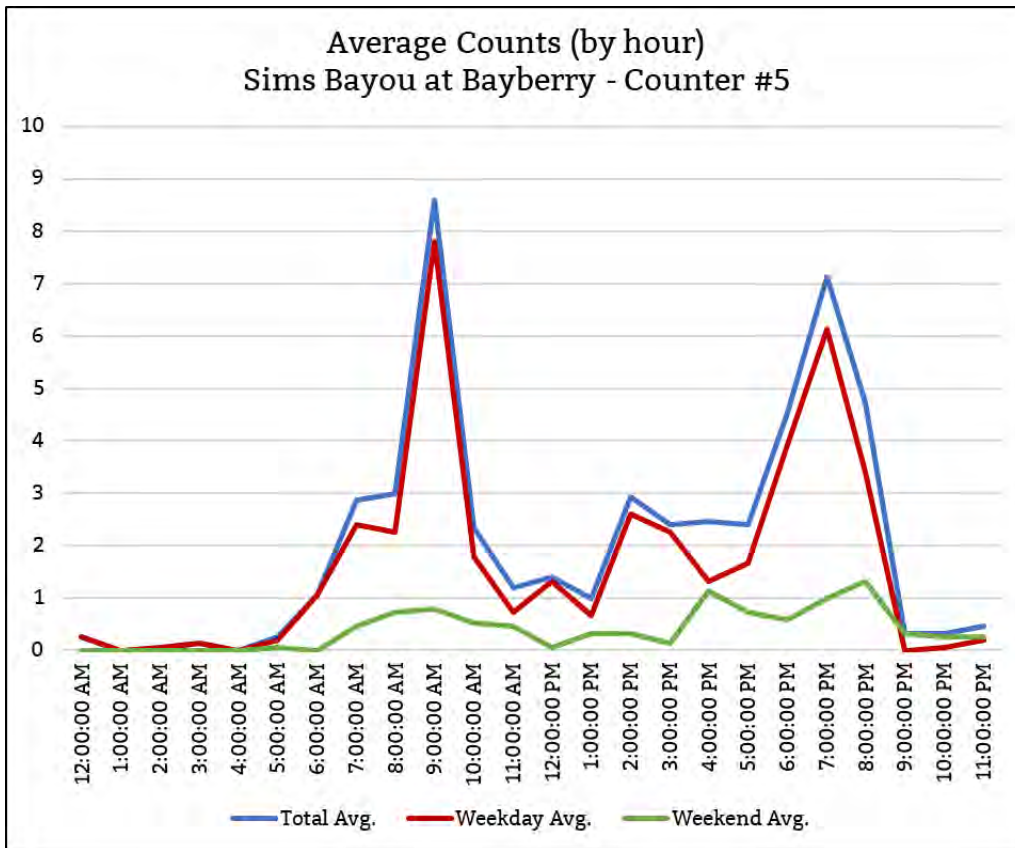
Image 1: Tree by path
(looking west)



Image 2: Tree by path
(zoomed)

COUNTS BY DATE		
Date	Counted	Climate
6/18/20	140	90,71,0.00in
6/19/20	66	91,74,0.13in
6/20/20	22	93,74,0.00in
6/21/20	27	82,70,1.22in
6/22/20	47	90,70,0.00in
6/23/20	44	88,73,0.62in
6/24/20	59	87,73,1.31in
6/25/20	40	86,76,0.00in
6/26/20	53	91,79,0.00in
6/27/20	32	92,80,0.00in
6/28/20	63	92,82,0.00in
6/29/20	55	94,82,0.00in
6/30/20	51	95,82,0.00in
7/1/20	46	97,82,0.00in
7/2/20	4	96,73,0.00in
Total	749	

DAILY USAGE	
Avg. Daily	50
Avg. Weekday	55
Avg. Weekend	36



Counter #6

Sims Bayou: Blue Ridge (T6SBBLUERIDGE)

Location Information	
Location Name	Sims Bayou: Blue Ridge
Location Description	Sims Bayou in Blue Ridge Park near the parking lot
Jurisdiction	City of Houston
Agency Deployed	Houston Parks Board
What object was device secured to?	Tree
Date/Time Installed	Thursday, June 18, 2020 (8:50 a.m.)
Date/Time Retrieved	Thursday, July 2, 2020 (6:45 a.m.)
Sidewalk Width	10'
Buffer Width	n/a (counter about 6' from path)
Street Width	n/a (off-street shared-use path)
Parallel Parking	n/a (off-street shared-use path)
Landscaping or Trees	Yes
Sidewalk Pavement Type	Concrete
ADA Ramps	Yes
Sidewalk Condition	Excellent
Speed Limit	n/a (off-street shared-use path)
Street Lighting	No
Street Traffic Volume	n/a (off-street shared-use path)
Transit	n/a (off-street shared-use path)
Shade	Yes
Have counts been collected by H-GAC at this location before?	No

Location Information: Map



Location Information: Photos



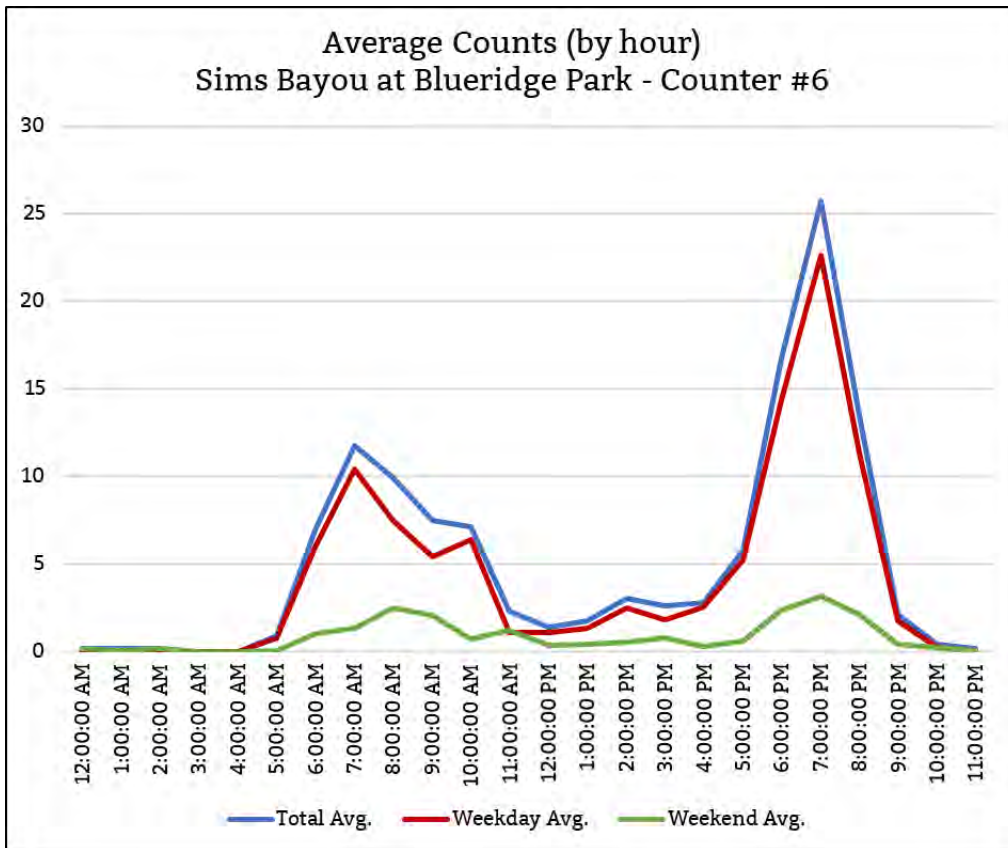
Image 1: Tree by path
(looking west)



Image 2: Tree by path
(zoomed looking southwest)

COUNTS BY DATE		
Date	Counted	Climate
6/18/20	210	90,71,0.00in
6/19/20	210	91,74,0.13in
6/20/20	61	93,74,0.00in
6/21/20	58	82,70,1.22in
6/22/20	99	90,70,0.00in
6/23/20	198	88,73,0.62in
6/24/20	102	87,73,1.31in
6/25/20	144	86,76,0.00in
6/26/20	86	91,79,0.00in
6/27/20	89	92,80,0.00in
6/28/20	98	92,82,0.00in
6/29/20	167	94,82,0.00in
6/30/20	138	95,82,0.00in
7/1/20	171	97,82,0.00in
7/2/20	9	96,73,0.00in
Total	1840	

DAILY USAGE	
Avg. Daily	123
Avg. Weekday	139
Avg. Weekend	77



Counter #3

Greens Bayou: Brock (T3GBBROCK)

Location Information	
Location Name	Greens Bayou: Brock
Location Description	Greens Bayou in Brock Park (near the parking lot off N. Green River Dr.)
Jurisdiction	City of Houston
Agency Deployed	Houston Parks Board
What object was device secured to?	Tree
Date/Time Installed	Thursday, July 2, 2020 (8:35 a.m.)
Date/Time Retrieved	Thursday, July 16, 2020 (5:55 a.m.)
Sidewalk Width	10'
Buffer Width	n/a (counter about 8' from path)
Street Width	n/a (off-street shared-use path)
Parallel Parking	n/a (off-street shared-use path)
Landscaping or Trees	Yes
Sidewalk Pavement Type	Concrete
ADA Ramps	Yes
Sidewalk Condition	Excellent
Speed Limit	n/a (off-street shared-use path)
Street Lighting	No
Street Traffic Volume	n/a (off-street shared-use path)
Transit	n/a (off-street shared-use path)
Shade	Yes
Have counts been collected by H-GAC at this location before?	No

NOTE: Counter did not record data due to malfunction (unknown reason as battery registered as good). The location will have to be studied in the future.

Location Information: Map



Location Information: Photos



Image 1: Tree by path
(looking north)



Image 2: Tree by path
(zoomed looking east)

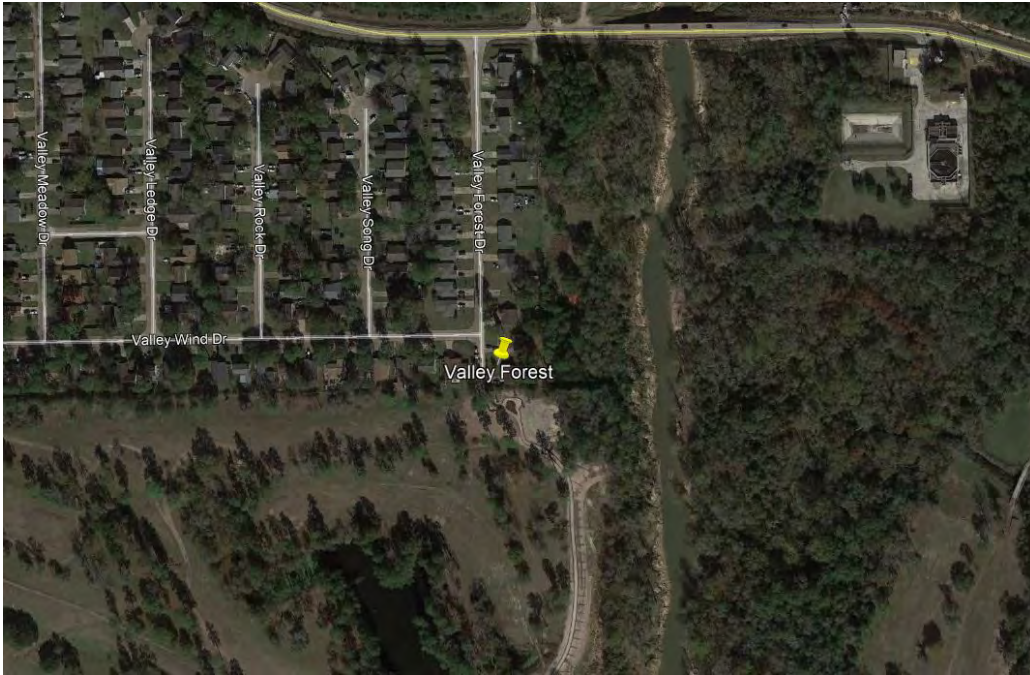
Counter #4

Greens Bayou: Valley Forest (T4GBVALLEYFOREST)

Location Information	
Location Name	Greens Bayou: Valley Forest
Location Description	Greens Bayou (near dead end of Valley Forest Dr.)
Jurisdiction	City of Houston
Agency Deployed	Houston Parks Board
What object was device secured to?	Fence post
Date/Time Installed	Thursday, July 2, 2020 (9:20 a.m.)
Date/Time Retrieved	Thursday, July 16, 2020 (5:40 a.m.)
Sidewalk Width	10'
Buffer Width	n/a (counter about 8' from path)
Street Width	n/a (off-street shared-use path)
Parallel Parking	n/a (off-street shared-use path)
Landscaping or Trees	No
Sidewalk Pavement Type	Concrete
ADA Ramps	Yes
Sidewalk Condition	Excellent
Speed Limit	n/a (off-street shared-use path)
Street Lighting	No
Street Traffic Volume	n/a (off-street shared-use path)
Transit	n/a (off-street shared-use path)
Shade	No
Have counts been collected by H-GAC at this location before?	No

NOTE: Counter did not record data due to malfunction (unknown reason as battery registered as good). The location will have to be studied in the future.

Location Information: Map



Location Information: Photos



Image 1: Fence post by path
(looking east)



Image 2: Fence post by path
(zoomed looking west)

Counter #5

Greens Bayou: 45 Bridge (T5GB45BRIDGE)

Location Information	
Location Name	Greens Bayou: 45 Bridge
Location Description	Greens Bayou (on the south end of the pedestrian bridge which is west of I-45 North Freeway)
Jurisdiction	City of Houston
Agency Deployed	Houston Parks Board
What object was device secured to?	Railing
Date/Time Installed	Thursday, July 2, 2020 (10:15 a.m.)
Date/Time Retrieved	Thursday, July 16, 2020 (5:20 a.m.)
Sidewalk Width	10'
Buffer Width	n/a (railing embedded in path)
Street Width	n/a (off-street shared-use path)
Parallel Parking	n/a (off-street shared-use path)
Landscaping or Trees	No
Sidewalk Pavement Type	Concrete
ADA Ramps	Yes
Sidewalk Condition	Excellent
Speed Limit	n/a (off-street shared-use path)
Street Lighting	No
Street Traffic Volume	n/a (off-street shared-use path)
Transit	n/a (off-street shared-use path)
Shade	No
Have counts been collected by H-GAC at this location before?	No

Location Information: Map



Location Information: Photos



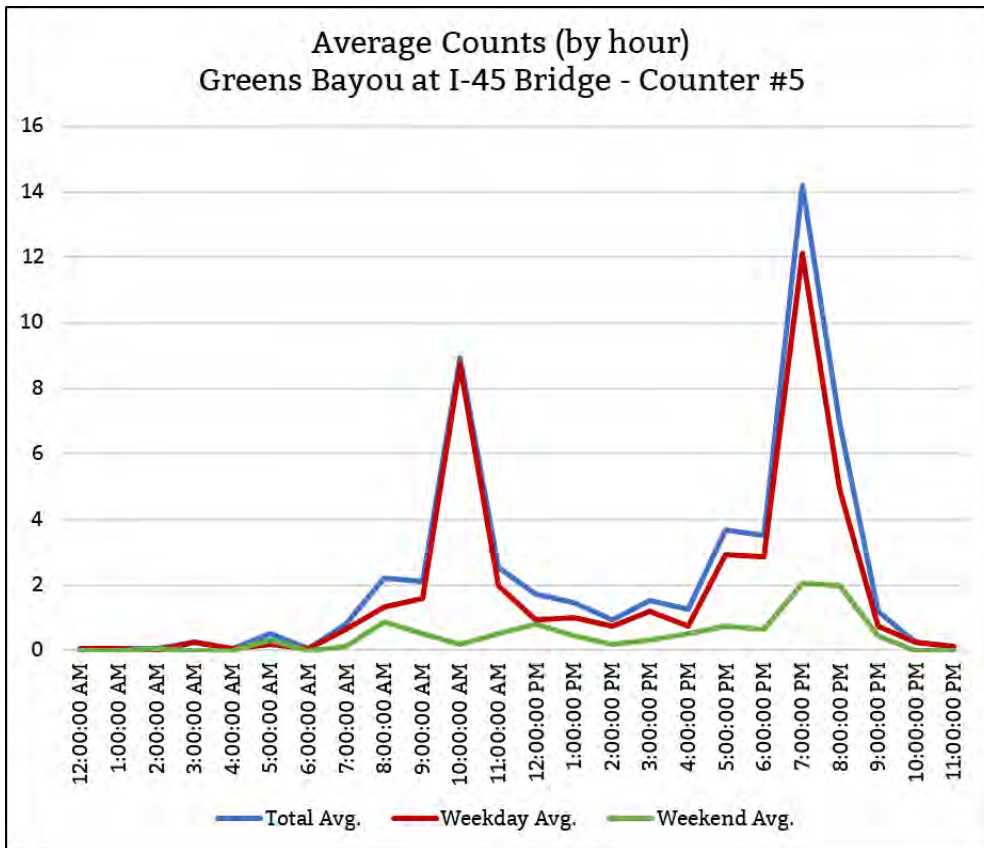
Image 1: Path by pedestrian bridge
(looking west)



Image 2: Path by pedestrian bridge
(zoomed looking south)

COUNTS BY DATE		
Date	Counted	Climate
7/2/20	172	96,73,0.00in
7/3/20	94	97,73,0.00in
7/4/20	52	96,79,0.00in
7/5/20	45	91,82,0.00in
7/6/20	32	94,80,0.56in
7/7/20	45	96,82,0.00in
7/8/20	65	98,82,0.00in
7/9/20	48	100,79,0.00in
7/10/20	40	101,81,0.00in
7/11/20	33	97,79,0.00in
7/12/20	34	101,81,0.00in
7/13/20	40	99,81,0.00in
7/14/20	51	99,81,0.00in
7/15/20	67	100,80,0.00in
Total	818	

DAILY USAGE	
Avg. Daily	58
Avg. Weekday	66
Avg. Weekend	41

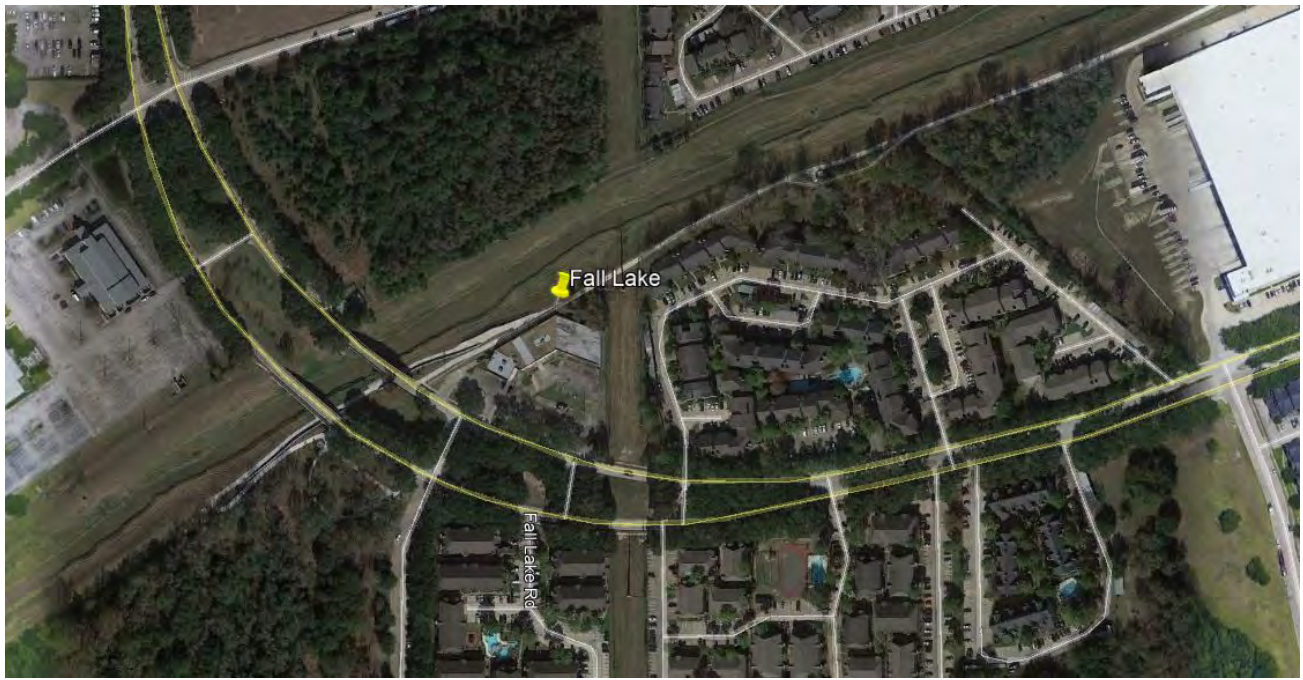


Counter #6

Greens Bayou: Fall Lake (T6GBFALLAKE)

Location Information	
Location Name	Greens Bayou: Fall Lake
Location Description	Greens Bayou (east of Greens Dr.)
Jurisdiction	City of Houston
Agency Deployed	Houston Parks Board
What object was device secured to?	Tree
Date/Time Installed	Thursday, July 2, 2020 (10:40 a.m.)
Date/Time Retrieved	Thursday, July 16, 2020 (5:05 a.m.)
Sidewalk Width	10'
Buffer Width	n/a (counter about 8' from path)
Street Width	n/a (off-street shared-use path)
Parallel Parking	n/a (off-street shared-use path)
Landscaping or Trees	Yes
Sidewalk Pavement Type	Concrete
ADA Ramps	Yes
Sidewalk Condition	Excellent
Speed Limit	n/a (off-street shared-use path)
Street Lighting	No
Street Traffic Volume	n/a (off-street shared-use path)
Transit	n/a (off-street shared-use path)
Shade	Yes
Have counts been collected by H-GAC at this location before?	No

Location Information: Map



Location Information: Photos



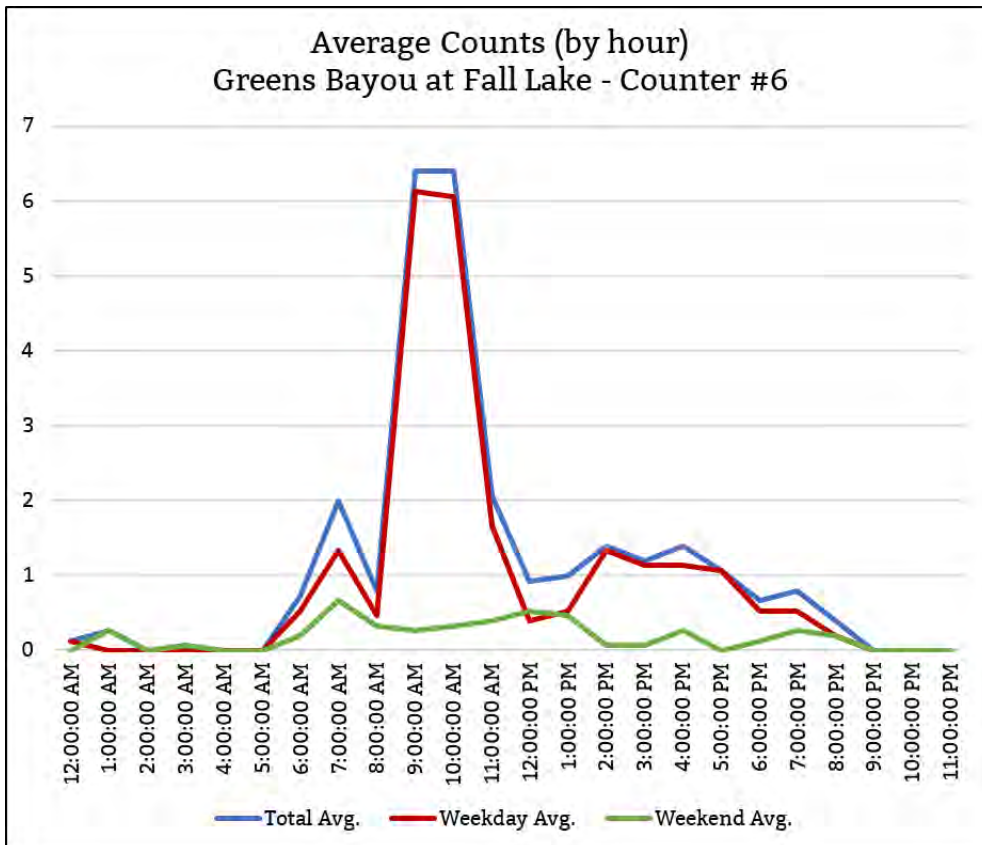
Image 1: Tree by path
(looking west)



Image 2: Tree by path
(zoomed looking southwest)

COUNTS BY DATE		
Date	Counted	Climate
7/2/20	102	96,73,0.00in
7/3/20	106	97,73,0.00in
7/4/20	24	96,79,0.00in
7/5/20	19	91,82,0.00in
7/6/20	28	94,80,0.56in
7/7/20	16	96,82,0.00in
7/8/20	15	98,82,0.00in
7/9/20	10	100,79,0.00in
7/10/20	8	101,81,0.00in
7/11/20	14	97,79,0.00in
7/12/20	11	101,81,0.00in
7/13/20	13	99,81,0.00in
7/14/20	38	99,81,0.00in
7/15/20	12	100,80,0.00in
Total	416	

DAILY USAGE	
Avg. Daily	30
Avg. Weekday	35
Avg. Weekend	17



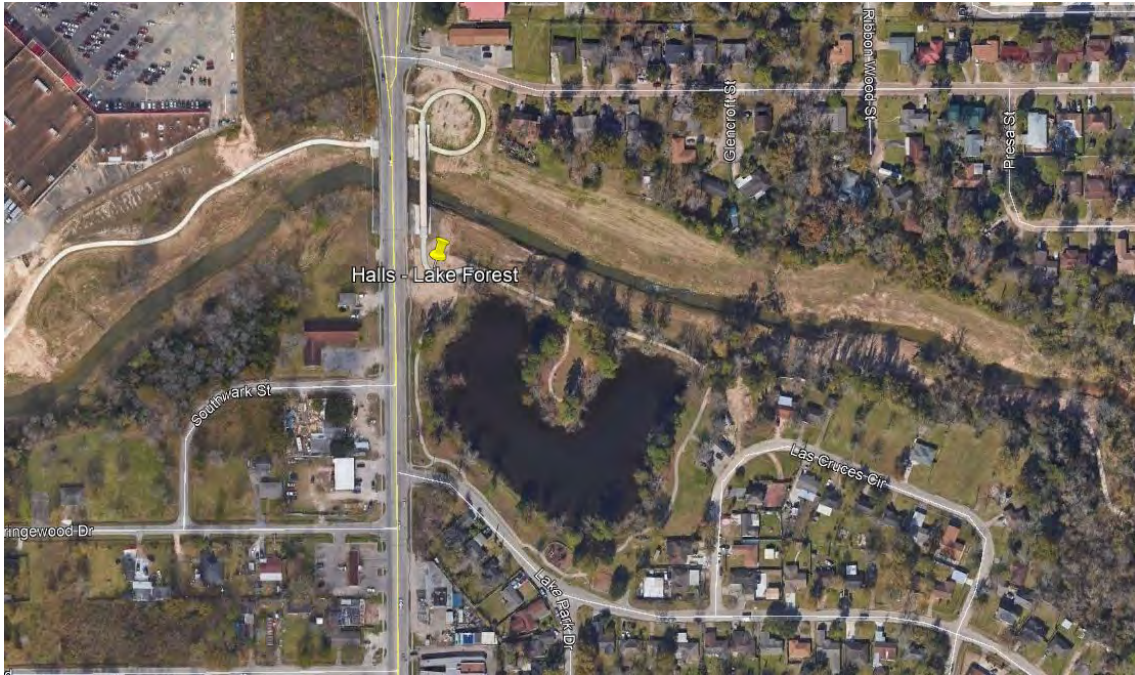
Counter #3

Halls Bayou: Lake Forest (T3HABLAKEFOREST)

Location Information	
Location Name	Halls Bayou: Lake Forest
Location Description	Halls Bayou in Lake Forest Park (south side of the pedestrian bridge over the bayou)
Jurisdiction	City of Houston
Agency Deployed	Houston Parks Board
What object was device secured to?	Sign
Date/Time Installed	Thursday, July 16, 2020 (8:10 a.m.)
Date/Time Retrieved	Thursday, July 30, 2020 (9:15 a.m.)
Sidewalk Width	10'
Buffer Width	n/a (counter about 2' from path)
Street Width	n/a (off-street shared-use path)
Parallel Parking	n/a (off-street shared-use path)
Landscaping or Trees	No
Sidewalk Pavement Type	Concrete
ADA Ramps	Yes
Sidewalk Condition	Excellent
Speed Limit	n/a (off-street shared-use path)
Street Lighting	No
Street Traffic Volume	n/a (off-street shared-use path)
Transit	n/a (off-street shared-use path)
Shade	No
Have counts been collected by H-GAC at this location before?	No

NOTE: Counter stopped collecting data on Friday, July 17 before 6:00 a.m., which may be related to the issue during the previous period. This provided such little data that it was determined the location would have to be studied in the future.

Location Information: Map



Location Information: Photos



Image 1: Sign by path
(looking west)



Image 2: Sign by path
(zoomed looking west)

Counter #4

Halls Bayou: Tidwell (T4HATIDWELL)

Location Information	
Location Name	Halls Bayou: Tidwell
Location Description	Halls Bayou in Tidwell Park (south side of the bayou near the trail into the park)
Jurisdiction	City of Houston
Agency Deployed	Houston Parks Board
What object was device secured to?	Tree
Date/Time Installed	Thursday, July 16, 2020 (8:30 a.m.)
Date/Time Retrieved	Thursday, July 30, 2020 (9:30 a.m.)
Sidewalk Width	10'
Buffer Width	n/a (counter about 8' from path)
Street Width	n/a (off-street shared-use path)
Parallel Parking	n/a (off-street shared-use path)
Landscaping or Trees	Yes
Sidewalk Pavement Type	Concrete
ADA Ramps	Yes
Sidewalk Condition	Excellent
Speed Limit	n/a (off-street shared-use path)
Street Lighting	No
Street Traffic Volume	n/a (off-street shared-use path)
Transit	n/a (off-street shared-use path)
Shade	Yes
Have counts been collected by H-GAC at this location before?	No

NOTE: 5 Counter box was vandalized. Someone cut the lock and opened the box, but the camera was not stolen. Unsure if the counter was recording data prior to that event (see note for prior period), but no data was saved. The location will have to be studied in the future.

Location Information: Map



Location Information: Photos



Image 1: Tree by path
(looking west)



Image 2: Tree by path
(zoomed looking west)

Condition Information



Image 3: Photo of counter after vandalism
(looking west)

Counter #5

Hunting Bayou: Leyland (T5HUBLEYLAND)

Location Information	
Location Name	Hunting Bayou: Leyland
Location Description	Hunting Bayou in Mickey Leyland Park (west side of the bayou)
Jurisdiction	City of Houston
Agency Deployed	Houston Parks Board
What object was device secured to?	Tree
Date/Time Installed	Thursday, July 16, 2020 (9:10 a.m.)
Date/Time Retrieved	Thursday, July 30, 2020 (8:30 a.m.)
Sidewalk Width	10'
Buffer Width	n/a (counter about 3' from path)
Street Width	n/a (off-street shared-use path)
Parallel Parking	n/a (off-street shared-use path)
Landscaping or Trees	Yes
Sidewalk Pavement Type	Concrete
ADA Ramps	Yes
Sidewalk Condition	Excellent
Speed Limit	n/a (off-street shared-use path)
Street Lighting	No
Street Traffic Volume	n/a (off-street shared-use path)
Transit	n/a (off-street shared-use path)
Shade	Yes
Have counts been collected by H-GAC at this location before?	No

Location Information: Map



Location Information: Photos



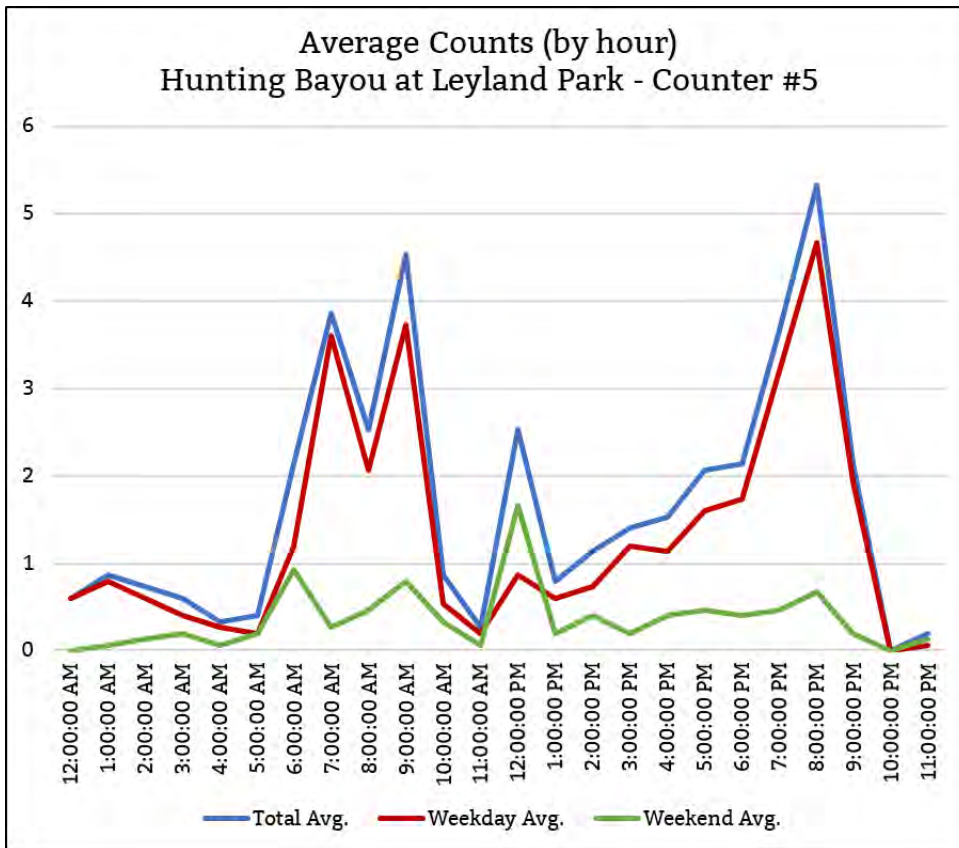
Image 1: Tree by path
(looking south)



Image 2: Tree by path
(zoomed looking south)

COUNTS BY DATE		
Date	Counted	Climate
7/16/20	61	92,78,0.06in
7/17/20	40	94,76,0.10in
7/18/20	49	96,74,0.03in
7/19/20	18	91,77,0.17in
7/20/20	58	89,75,0.46in
7/21/20	45	91,76,0.08in
7/22/20	37	96,76,0.00in
7/23/20	49	94,74,0.00in
7/24/20	42	89,76,0.74in
7/25/20	38	91,77,0.03in
7/26/20	26	93,76,0.00in
7/27/20	55	89,76,0.55in
7/28/20	47	92,73,0.17in
7/29/20	38	91,73,0.25in
7/30/20	29	94,78,0.00in
Total	632	

DAILY USAGE	
Avg. Daily	42
Avg. Weekday	46
Avg. Weekend	33



Counter #6

Hunting Bayou: Pickfair (T6HUBPICKFAIR)

Location Information	
Location Name	Hunting Bayou: Pickfair
Location Description	Hunting Bayou east of Pickfair St.
Jurisdiction	City of Houston
Agency Deployed	Houston Parks Board
What object was device secured to?	Tree
Date/Time Installed	Thursday, July 16, 2020 (8:55 a.m.)
Date/Time Retrieved	Thursday, July 30, 2020 (8:45 a.m.)
Sidewalk Width	10'
Buffer Width	n/a (counter about 5' from path)
Street Width	n/a (off-street shared-use path)
Parallel Parking	n/a (off-street shared-use path)
Landscaping or Trees	Yes
Sidewalk Pavement Type	Concrete
ADA Ramps	Yes
Sidewalk Condition	Excellent
Speed Limit	n/a (off-street shared-use path)
Street Lighting	No
Street Traffic Volume	n/a (off-street shared-use path)
Transit	n/a (off-street shared-use path)
Shade	Yes
Have counts been collected by H-GAC at this location before?	No

Location Information: Map



Location Information: Photos



Image 1: Tree by path
(looking north)



Image 2: Tree by path
(zoomed looking east)

COUNTS BY DATE		
Date	Counted	Climate
7/16/20	33	92,78,0.06in
7/17/20	6	94,76,0.10in
7/18/20	31	96,74,0.03in
7/19/20	1	91,77,0.17in
7/20/20	26	89,75,0.46in
7/21/20	13	91,76,0.08in
7/22/20	19	96,76,0.00in
7/23/20	9	94,74,0.00in
7/24/20	13	89,76,0.74in
7/25/20	9	91,77,0.03in
7/26/20	10	93,76,0.00in
7/27/20	35	89,76,0.55in
7/28/20	10	92,73,0.17in
7/29/20	9	91,73,0.25in
7/30/20	2	94,78,0.00in
Total	226	

DAILY USAGE	
Avg. Daily	15
Avg. Weekday	16
Avg. Weekend	13

t

