

LEGEND

- Bike Lanes (on-street)**
Dedicated lane marked off with painted lines for use by cyclists
- Shared Use Path/Trail**
Dedicated trail completely separated from auto traffic used by pedestrians and cyclists
- Signed Shared Roadway**
Route with signs indicating cars and cyclists need to share the travel lanes
- Signed Shoulder Route**
Route with signs indicating that cyclists are permitted to use the shoulder as a travel lane
- Proposed (Future) Routes**
- METRO Rail**
- Major Highways**
- Houston B-cycle Stations**
- Hospitals**
- Light Rail and Stations**
- Universities**
- Parks**
- Bike Shops**
- Points of Interest**
- Transit Centers/ Park and Rides**

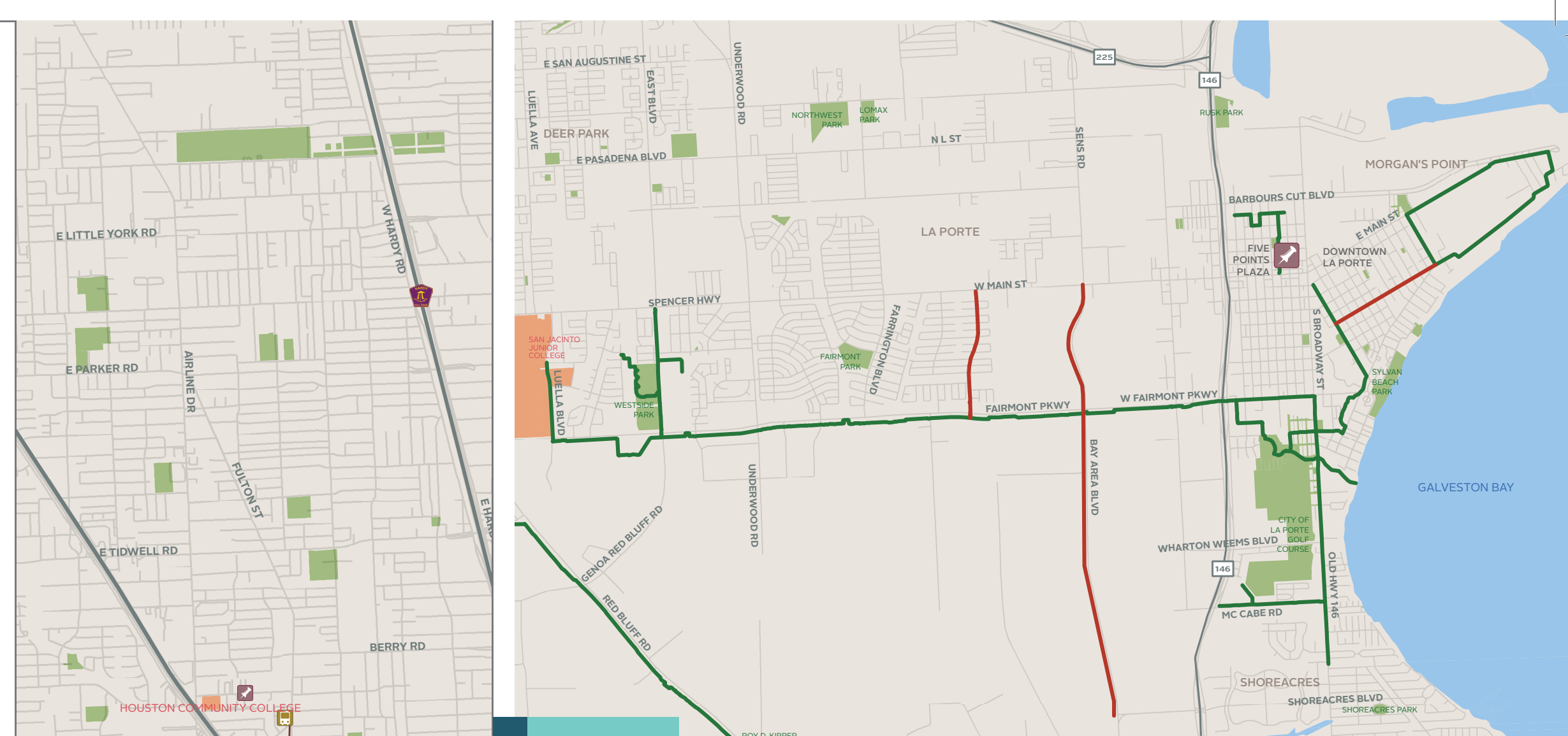
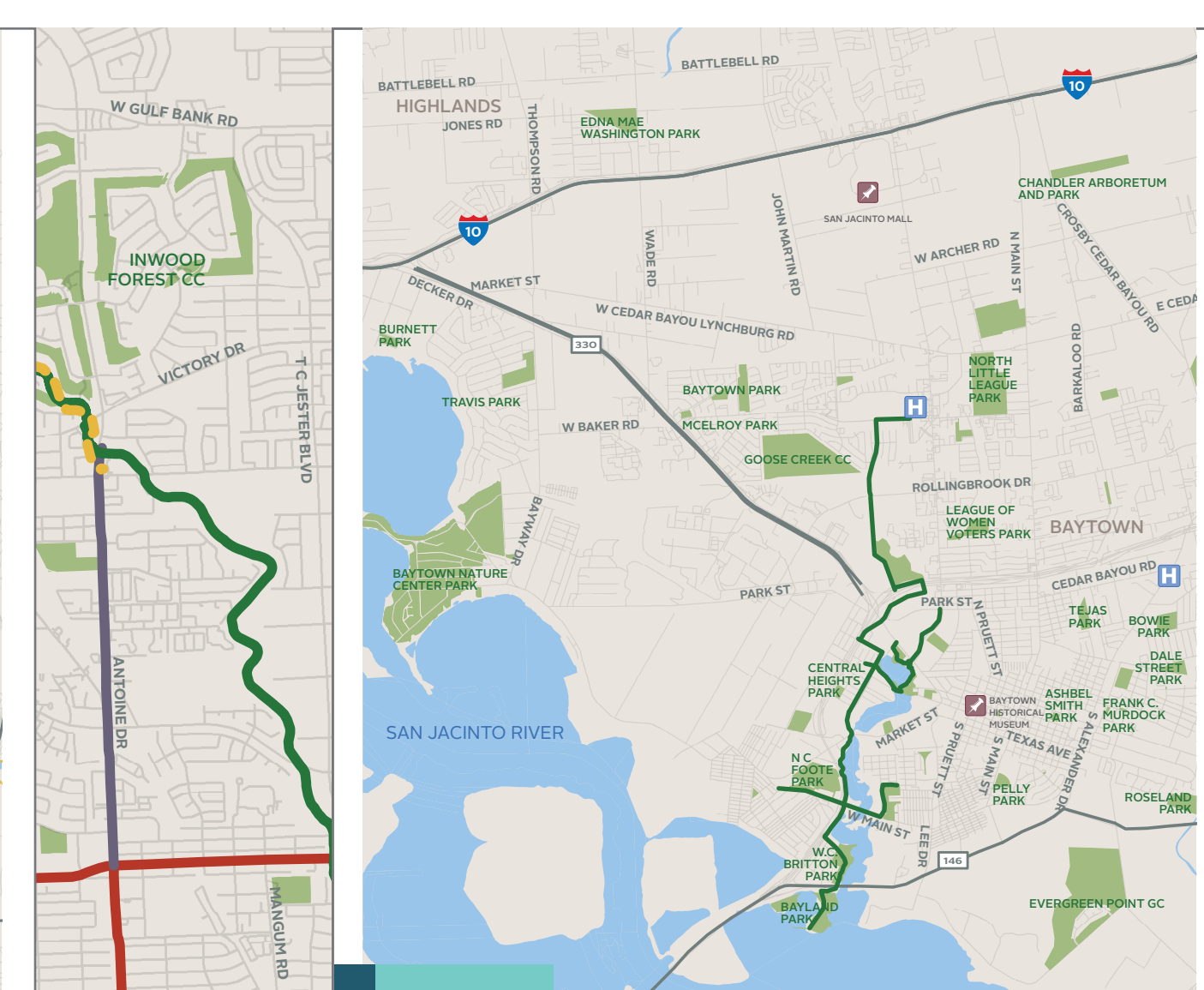
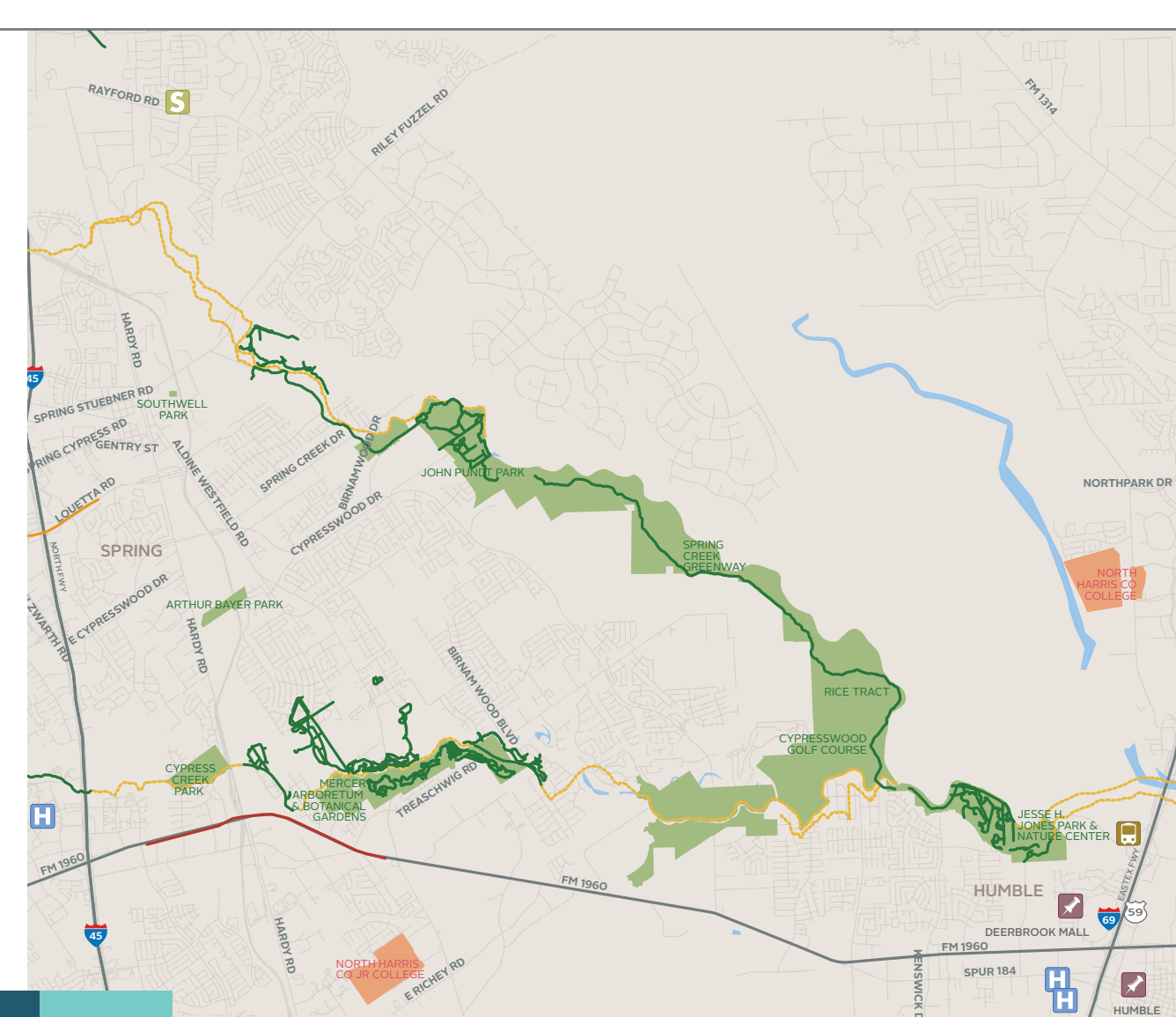
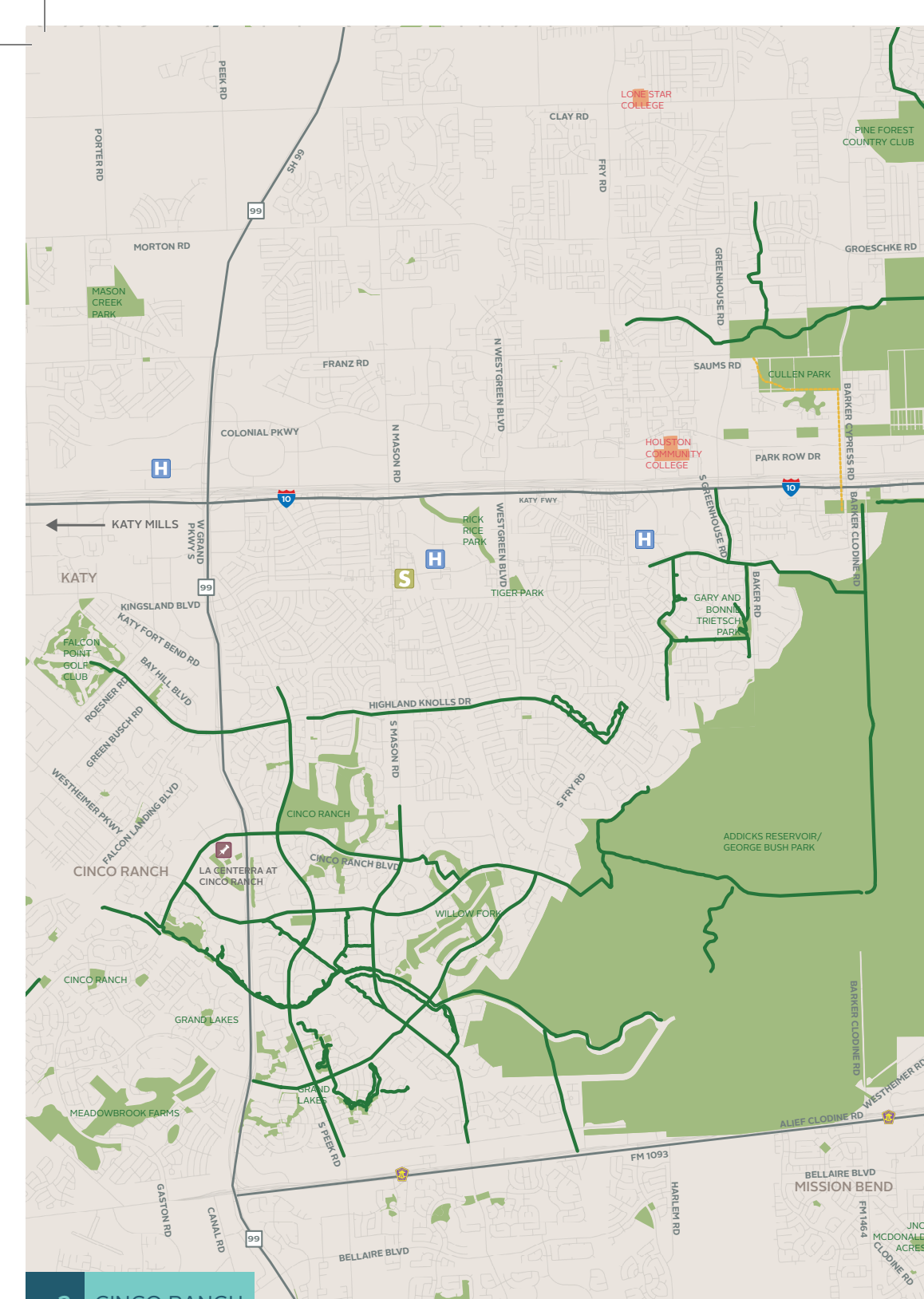
1 HOUSTON

2 CINCO RANCH

3 SPRING

4 BAYTOWN

5 LA PORTE



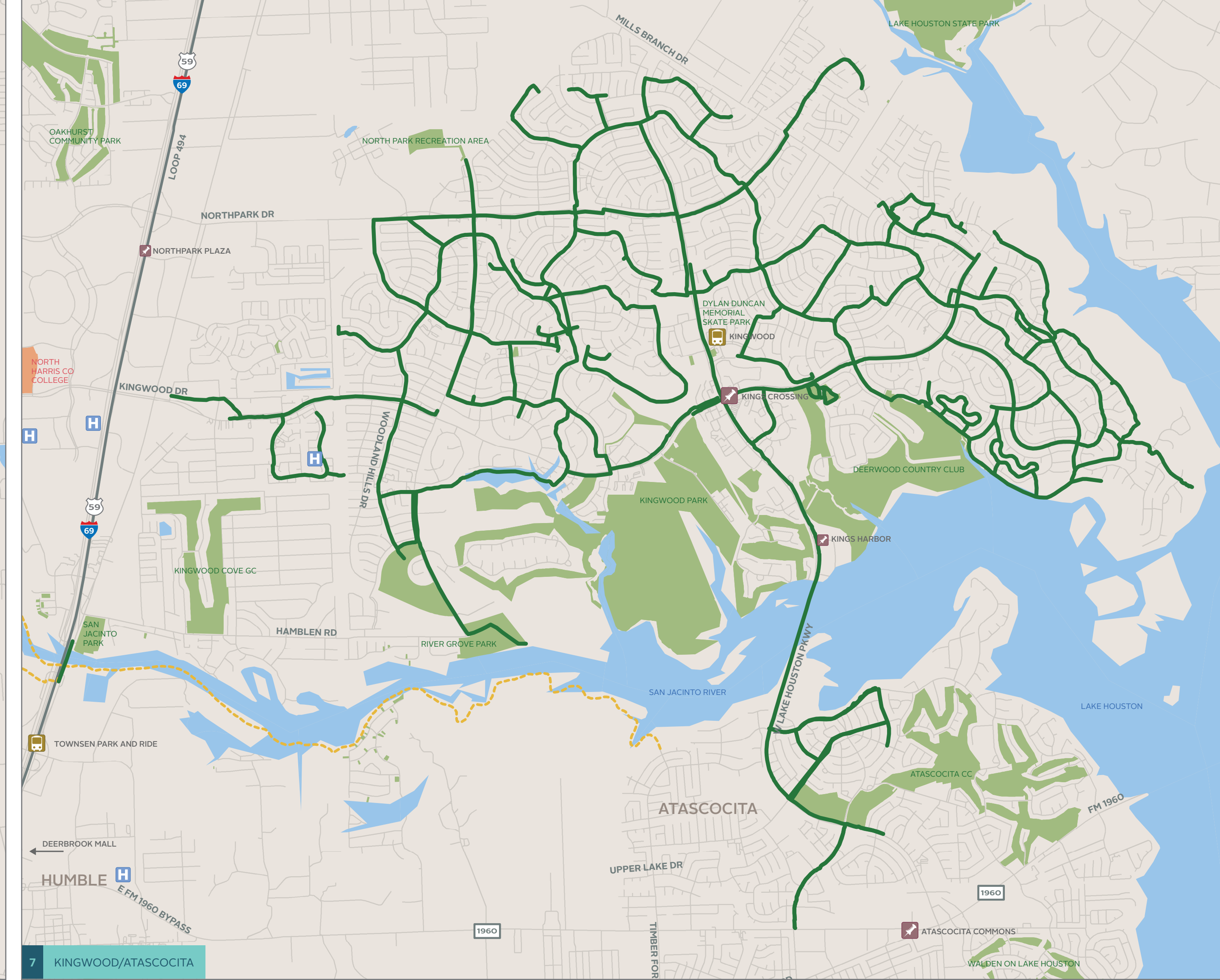
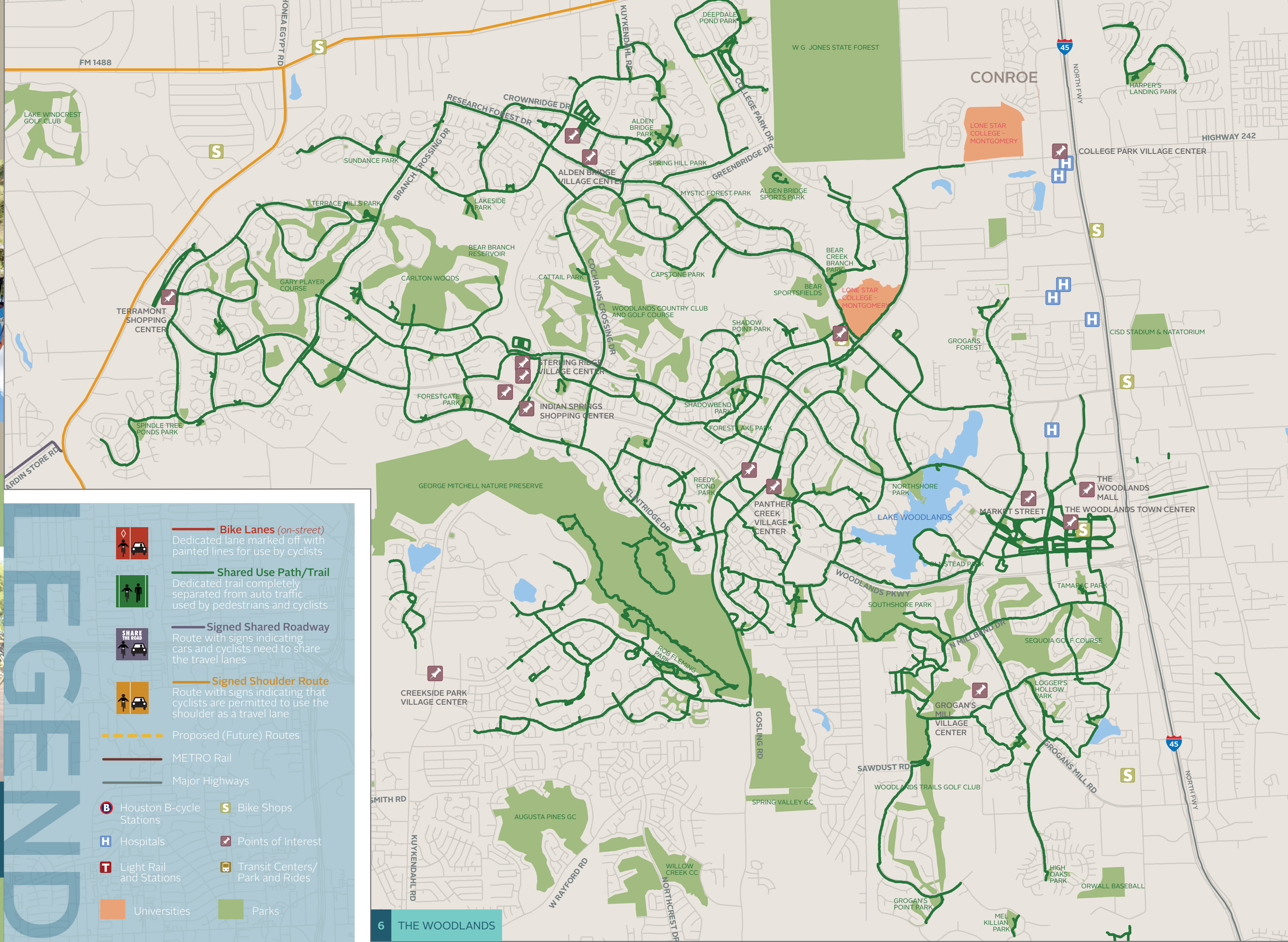
SAFETY TIPS

- Always wear a helmet
- Ride in the same direction as traffic, with against traffic
- Use headlights, brake lights and reflectors
- Obey vehicular traffic laws
- Be visible, be predictable and communicate

IMPORTANT LINKS

- League of American Bicyclists - Ride Smart <https://www.labcycle.org/ridersmart>
- GoCycling - Ride Smart http://www.gocycling.com/BikeWay_Viewer/

HOUSTON-GALVESTON AREA COUNCIL
www.hgac.com



LEGEND

- Bike Lanes (on-street)**
Dedicated lane marked off with painted lines for use by cyclists
- Shared Use Path/Trail**
Dedicated trail completely separated from auto traffic, used by pedestrians and cyclists
- Signed Shared Roadway**
Route with signs indicating cars and cyclists need to share the travel lanes
- Signed Shoulder Route**
Route with signs indicating that cyclists are permitted to use the shoulder as a travel lane
- Proposed (Future) Routes**
- Major Highways**
- HOUSTON-B-CYCLE STATIONS**
- BIKE SHOPS**
- HOSPITALS**
- POINTS OF INTEREST**
- TRANSIT CENTERS/PARK AND RIDES**
- UNIVERSITIES**
- PARKS**

BIKE WAY MAP
HOUSTON-GALVESTON AREA

