

**Metropolitan Transit Authority  
of Harris County**

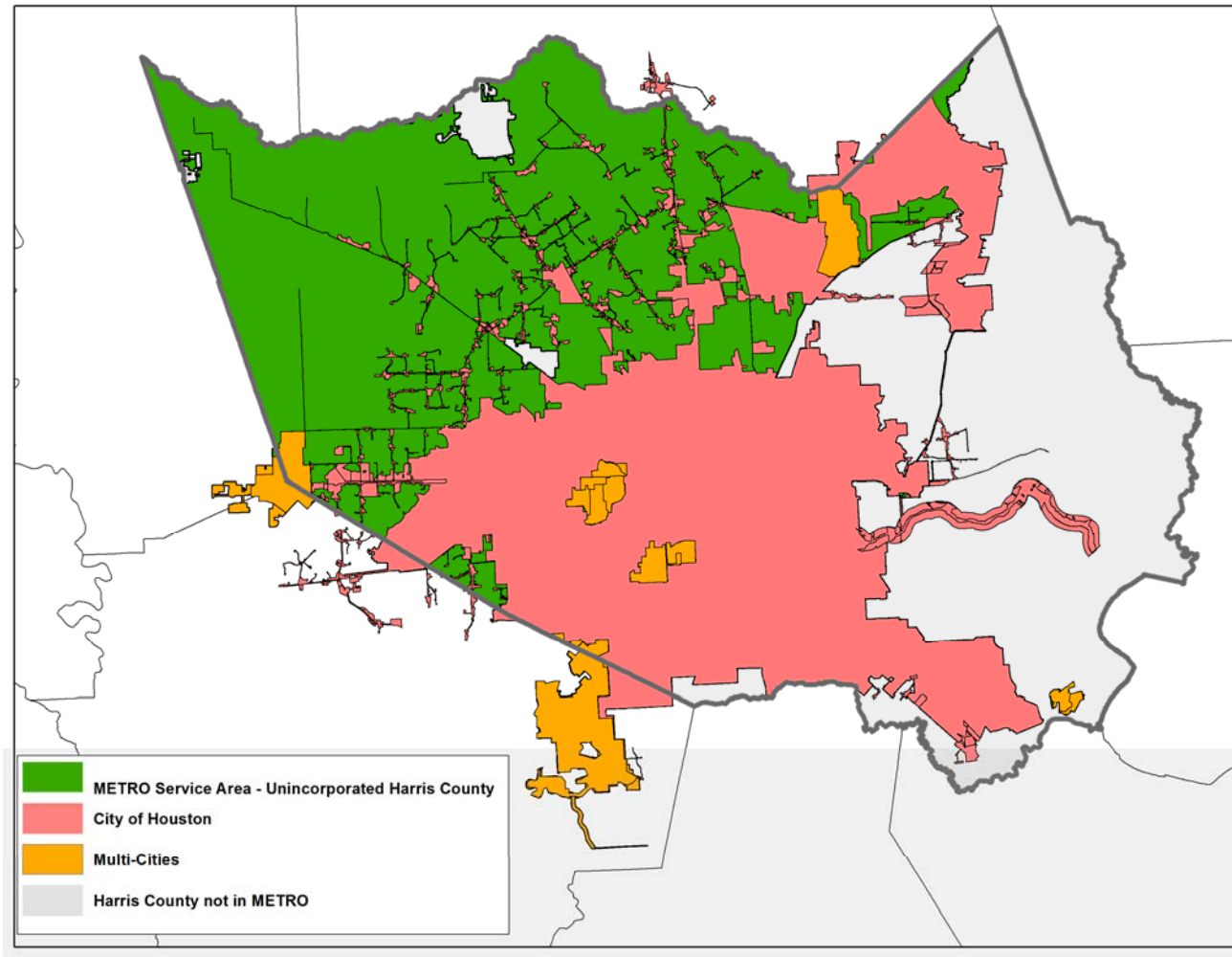


***Chair Carrin Patman***

**High Capacity Transit Task Force**

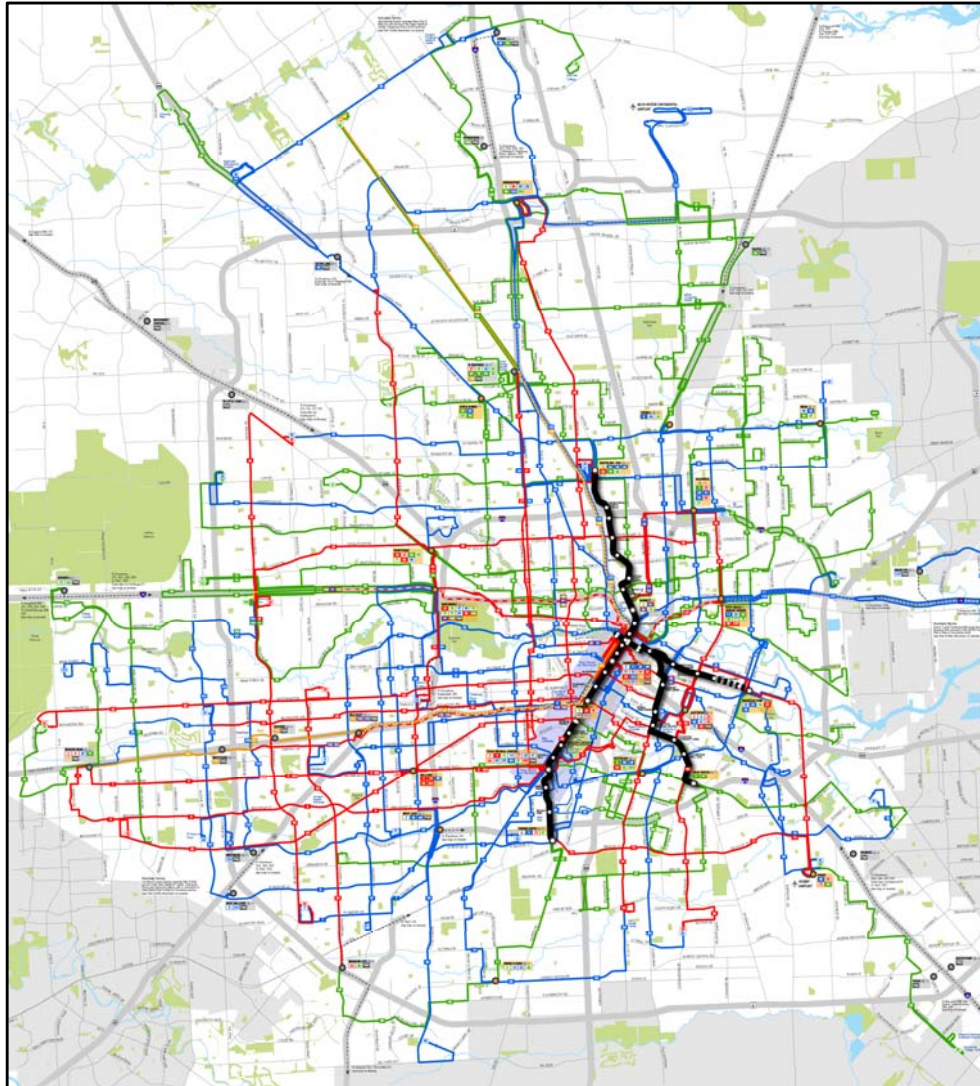
**July 28, 2017**

# Service Area



- METRO Service Area in Unincorporated Harris County
- City of Houston
- Multi-Cities
  - Bellaire
  - Bunker Hill Village
  - El Lago
  - Hedwig Village
  - Hilshire Village
  - Humble
  - Hunters Creek
  - Katy
  - Missouri City
  - Piney Point
  - Southside Place
  - Spring Valley
  - Taylor Lake Village
  - West University Place

# New Bus Network



# Local Bus

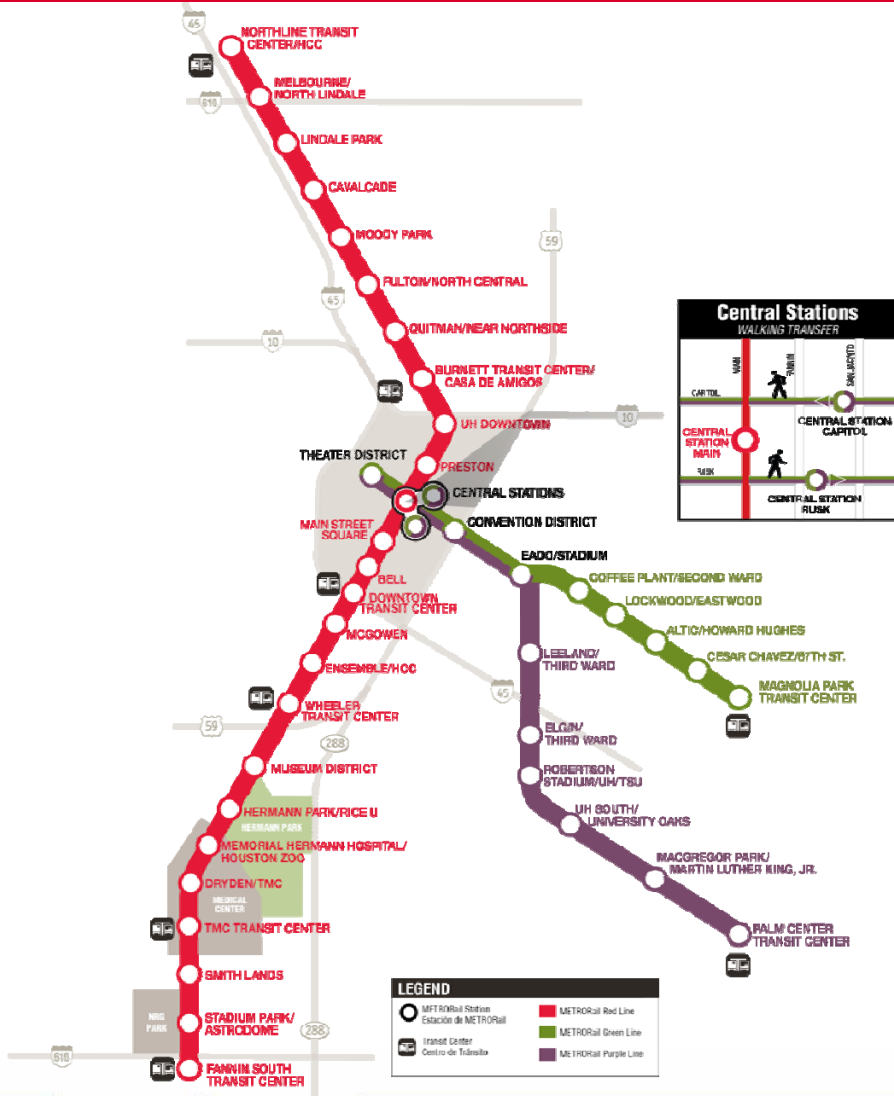
- Fixed Route
- Community Connector



# Park & Ride and HOV/HOT

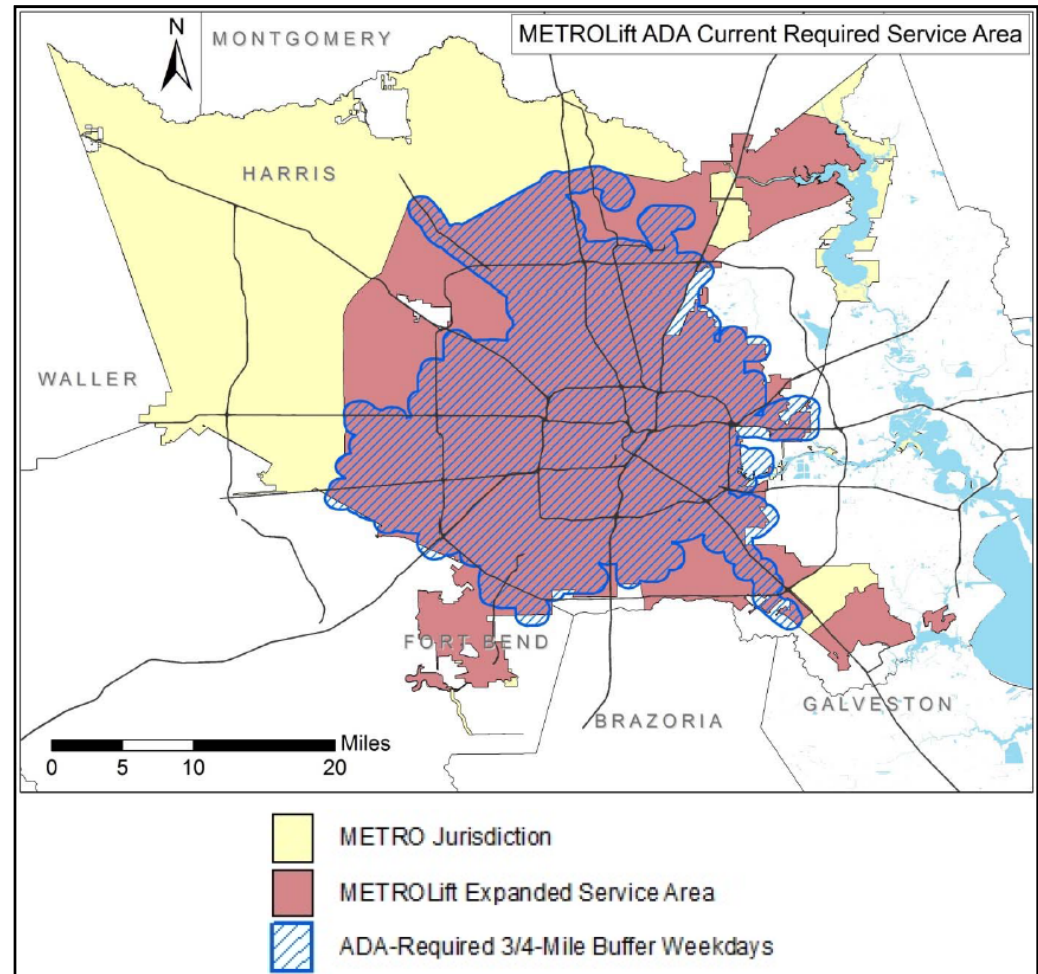


# METRORail



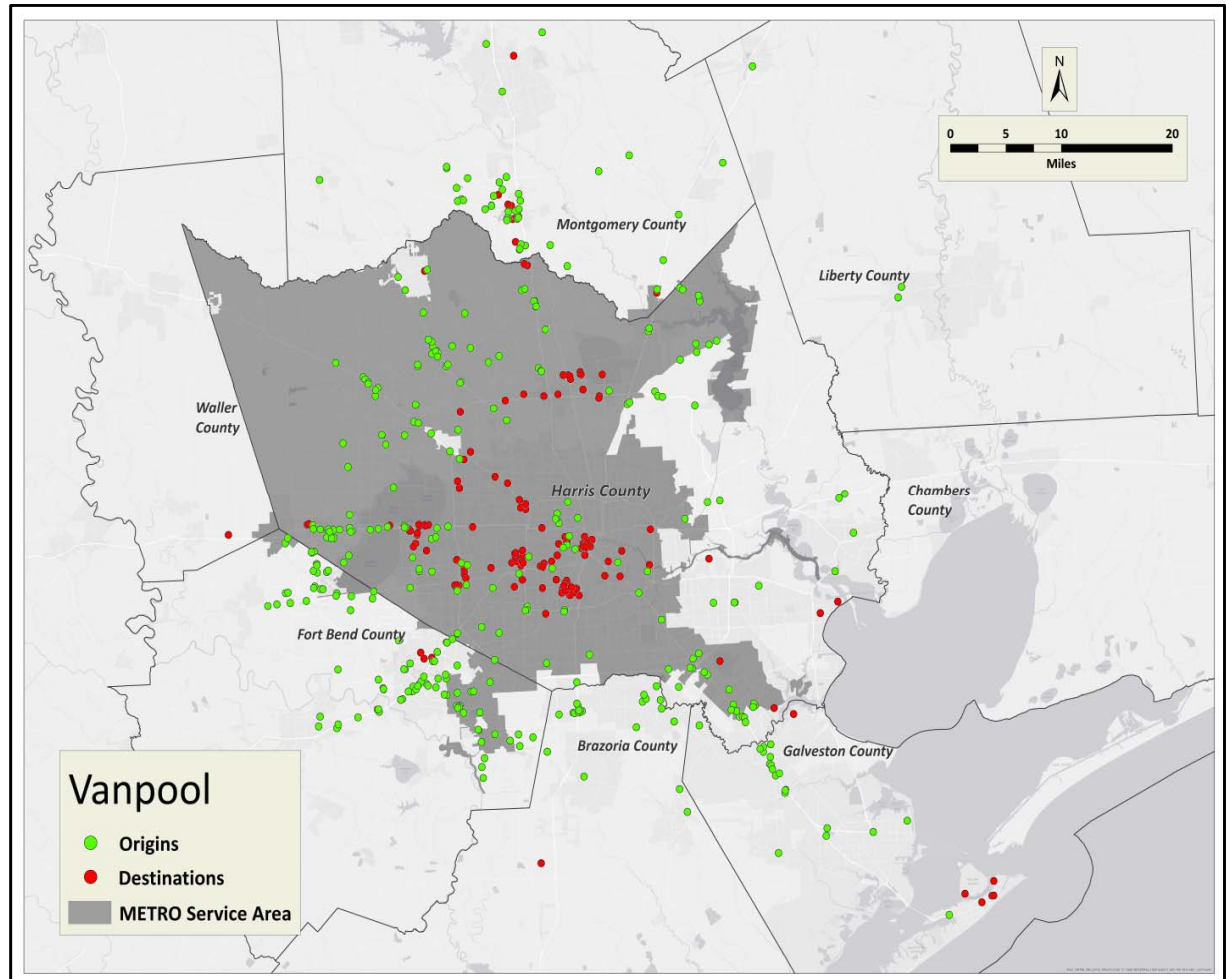
# METROLift

- Paratransit service offered in accordance with the Americans with Disabilities Act



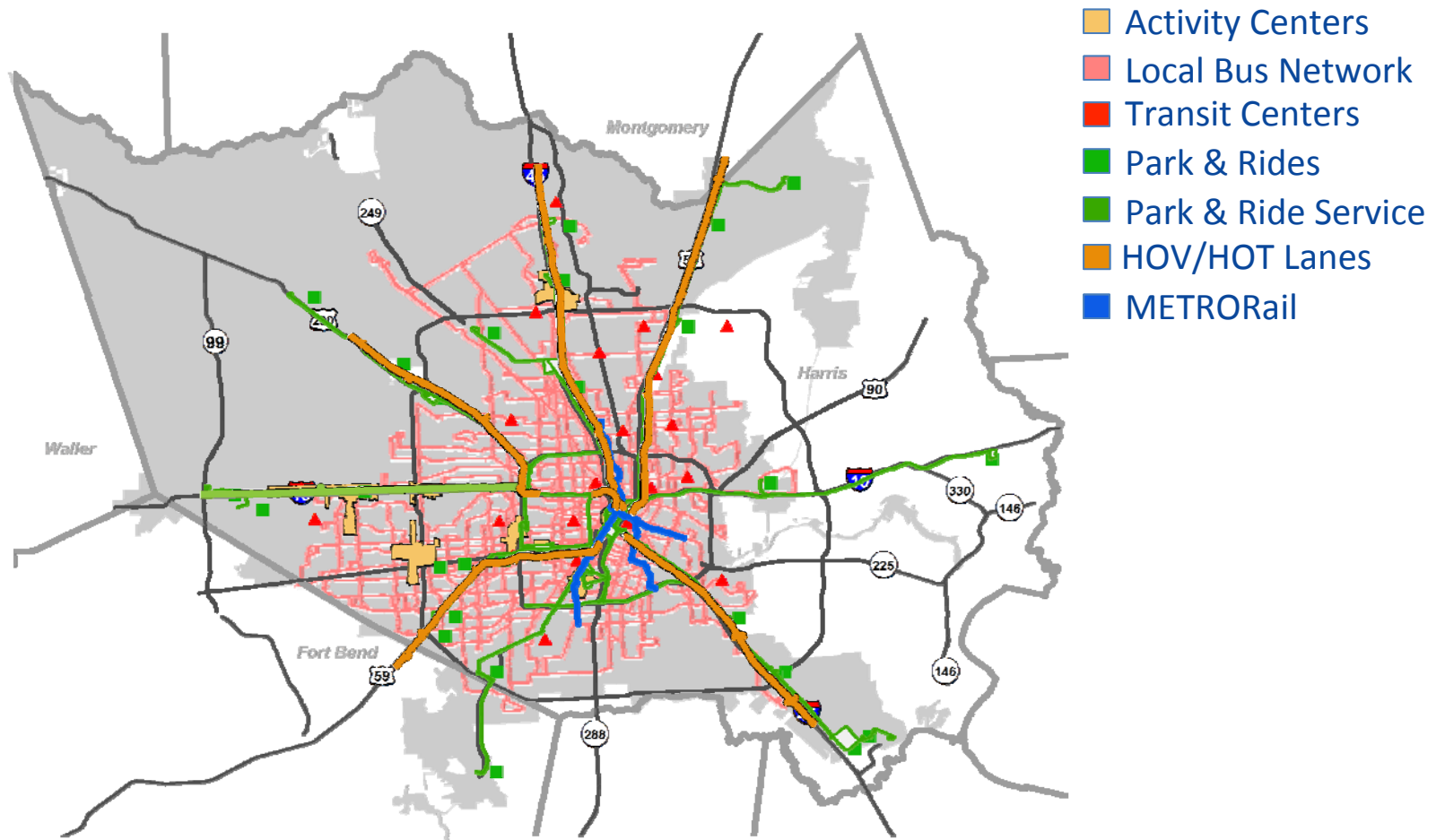
# METRO Star (Vanpool)

- Vanpools are a public transit mode operating with vans as a ride sharing arrangement
- Vanpools provide transportation to groups of individuals traveling directly to and from work
- METRO Star reduces vehicular travel across the Houston region by 60 million miles per year





# Service Area



# METRO Services and Ridership 2016


- **Local fixed route bus routes**
  - 58.7 million boardings per year
- **Park & Ride fixed route bus routes**
  - 8.2 million boardings per year
- **Light Rail**
  - 18.5 million boardings per year
- **METROLift (Paratransit)**
  - 1.9 million boardings per year
- **METRO Star (Vanpool)**
  - 2.2 million boardings per year
- **HOV/HOT Lanes**
  - 26.5 million users other than METRO bus passengers per year



Source: FY 2016 Ridership Numbers

**Total System Ridership: 116 million per year**

# 2003 METRO Solutions Referendum Passed by Voters



**Transit System Plan**

- NBN** ▶ About 44 new bus routes
- 8** ▶ 9 Transit Centers
- 7** ▶ 9 Park & Ride lots
- ✓ ▶ New Two-way all-day Park & Ride service
- 9,711** ▶ Approximately 20,000 new parking spaces
- 15.2** ▶ 64.8 miles of Light Rail
- 23** ▶ About 54 Light Rail Stations
- ▶ 8 miles Commuter Rail
- ✓ ▶ Bike Racks on buses and at transit centers
- ✓ ▶ METROLift Service mirrors bus expansion
- plus more

**Legend**

- Local and Bus Service
- Signature Bus Service
- Park & Ride
- Phase I ML (opening Jan 2003)
- Additional (planned)
- - Future Rail
- Commuter (pending funding)
- - Commuter (pending funding)
- Transit Center
- Park & Ride

## Transit System Plan

- NBN** ▶ About 44 new bus routes
- 8** ▶ 9 Transit Centers
- 7** ▶ 9 Park & Ride lots
- ✓ ▶ New Two-way all-day Park & Ride service
- 9,711** ▶ Approximately 20,000 new parking spaces
- 15.2** ▶ 64.8 miles of Light Rail
- 23** ▶ About 54 Light Rail Stations
- ▶ 8 miles Commuter Rail
- ✓ ▶ Bike Racks on buses and at transit centers
- ✓ ▶ METROLift Service mirrors bus expansion
- plus more

bit A  
AN

2003



# METRO Bond Initiative

## Exhibit D Ballot Metropolitan Transit Authority of Harris County, Texas

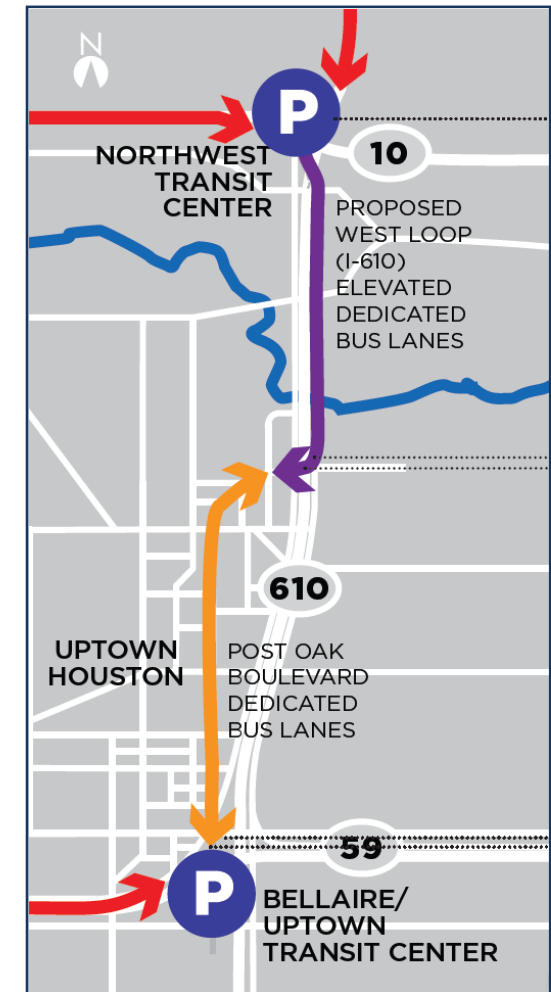
The following summary lists the components and segments of METRORAIL and Commuter Line, as described in Exhibits A and A-3 through A-9 of such Resolution and the Official Notice of the Election, and is a part of the Ballot and the Proposition being submitted to the voters at the Election.

The segments marked ★ are expected to be completed by the end of 2012 utilizing the proceeds of the \$640 million of bonds, if approved at the Election.

1. North Hard:
  - ★ (a) UH-Downtown to Northline Mall **DONE**
  - (b) Northline Mall to Greenspoint
  - (c) Greenspoint to Bush IAH Airport
2. Southeast:
  - ★ (a) Downtown/Bagby to Dowling **DONE**
  - ★ (b) Dowling to Griggs/610 **DONE**
  - (c) Griggs/610 to Park & Ride in the vicinity of Hobby Airport
  - (d) Sunnyside: Southeast Transit Center to Bellfort
  - (e) Sunnyside: Bellfort to Airport Blvd.
3. Harrisburg:
  - ★ (a) Dowling to Magnolia Transit Center **DONE**
  - (b) Magnolia Transit Center to Gulfgate Center
  - (c) Gulfgate Center to Telephone Road
4. ★ Westpark – Wheeler Station to Hillcroft Transit Center **NOT DONE**
5. Uptown/West Loop – Westpark to the Northwest Transit Center
6. Inner Loop – Downtown/Bagby to Northwest Transit Center
7. Southwest Commuter Line – Fannin South Park & Ride to Harris County Line

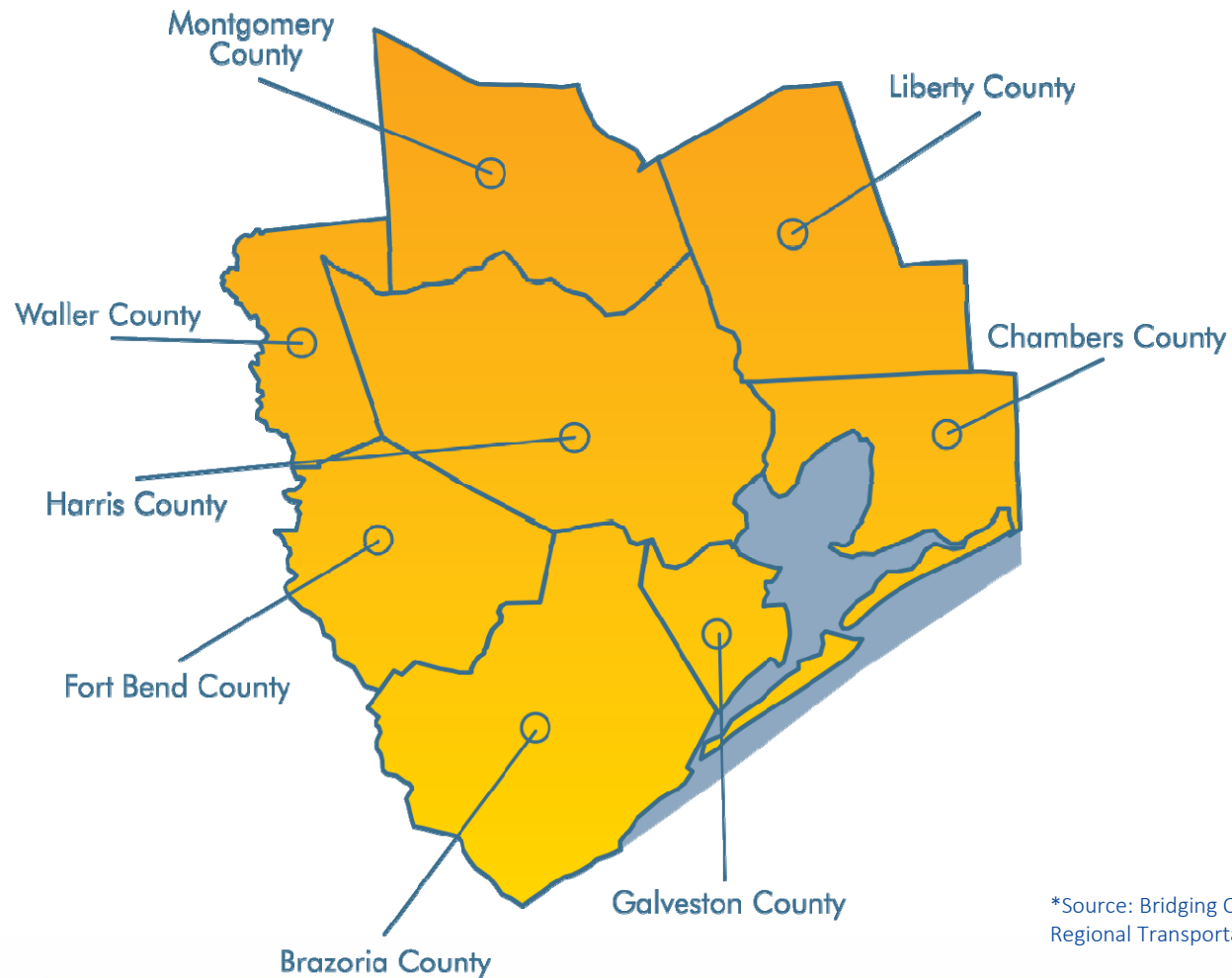
# Current Project: Uptown Bus Rapid Transit

- Operation of buses (METRO)
- Northwest Transit Center expansion (METRO)
- West Loop Dedicated Bus Lanes (TxDOT)
- Post Oak Boulevard bus guide way/stations (Uptown)
- Bellaire/Uptown Transit Center (Uptown)



# Houston-Galveston Area Council 2040 RTP

## H-GAC Eight County Transportation Management Area



\*Source: Bridging Our Communities – H-GAC 2040 Regional Transportation Plan

# H-GAC 2040 RTP

## HOUSTON-GALVESTON REGIONAL TRANSIT RIDERSHIP BY ANNUAL BOARDINGS

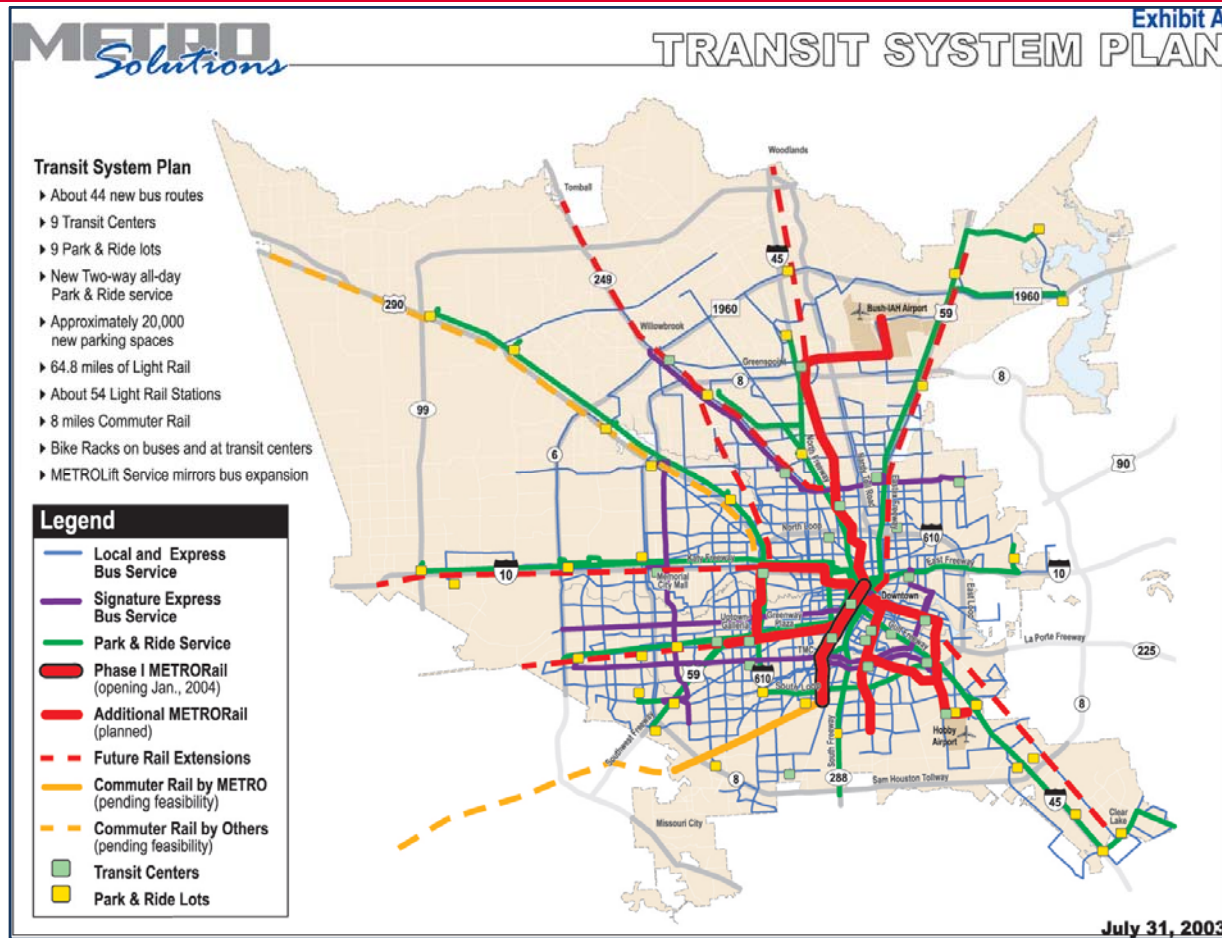
SERVICE PROVIDER	2013
METRO	81,641,370
Fort Bend County	369,891
Harris County	210,479
Gulf Coast Center Connect/ Galveston County Transit District	1,431,345
Brazos Transit District/Conroe-The Woodlands	869,335
<b>TOTAL</b>	<b>84,522,420</b>

*Estimates are for ridership within the H-GAC eight-county transportation management area only.  
Source: TxDOT- PTN 128 Reports*

\*Source: Bridging Our Communities – H-GAC 2040 Regional Transportation Plan



# 2003 METRO Solutions Referendum Passed by Voters



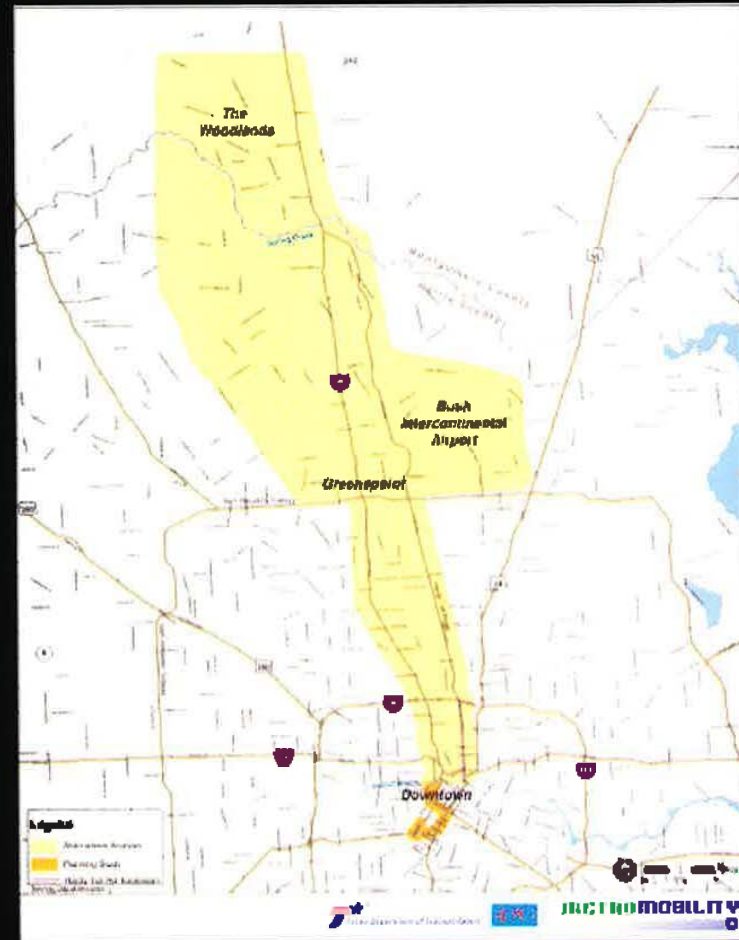
**\$640 million in bonding authority**  
(never enough to complete the entire plan)





# North-Hardy Corridor

Extends from  
Downtown, north  
to the Woodlands  
along the North  
Freeway (IH 45N)  
and the Hardy Toll  
Road. Includes  
the Bush/  
Intercontinental  
Airport



TRANSPORTATION CONSULTANTS



# Southeast-Universities-Hobby

Extends from  
Downtown to  
Hobby Airport,  
bounded by the  
Gulf Freeway  
(IH 45S), SH 288  
and Fuqua Road

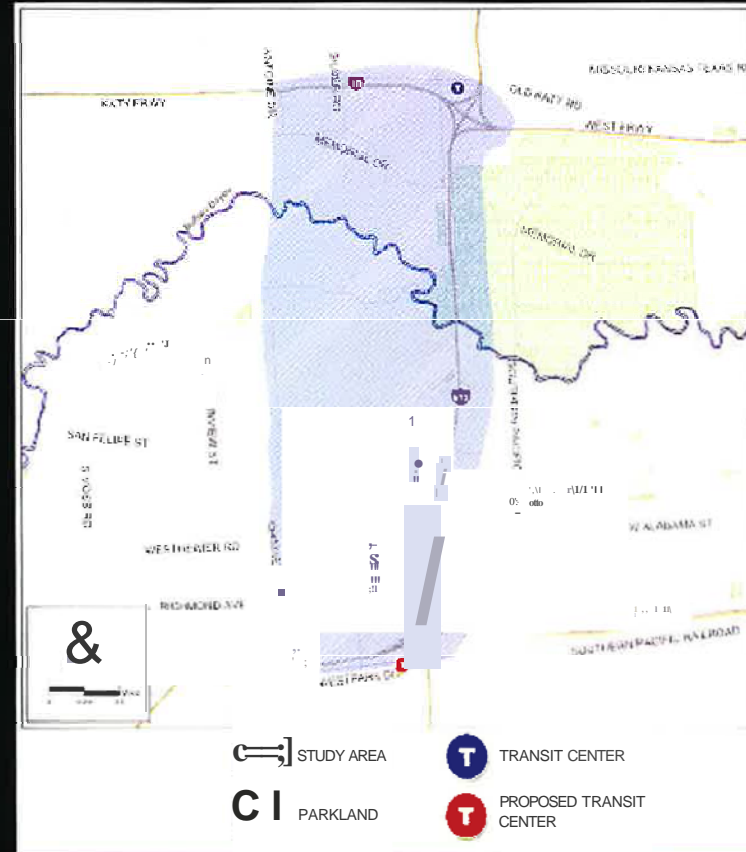


TRANSPORTATION CONSULTANTS



# Uptown-West Loop

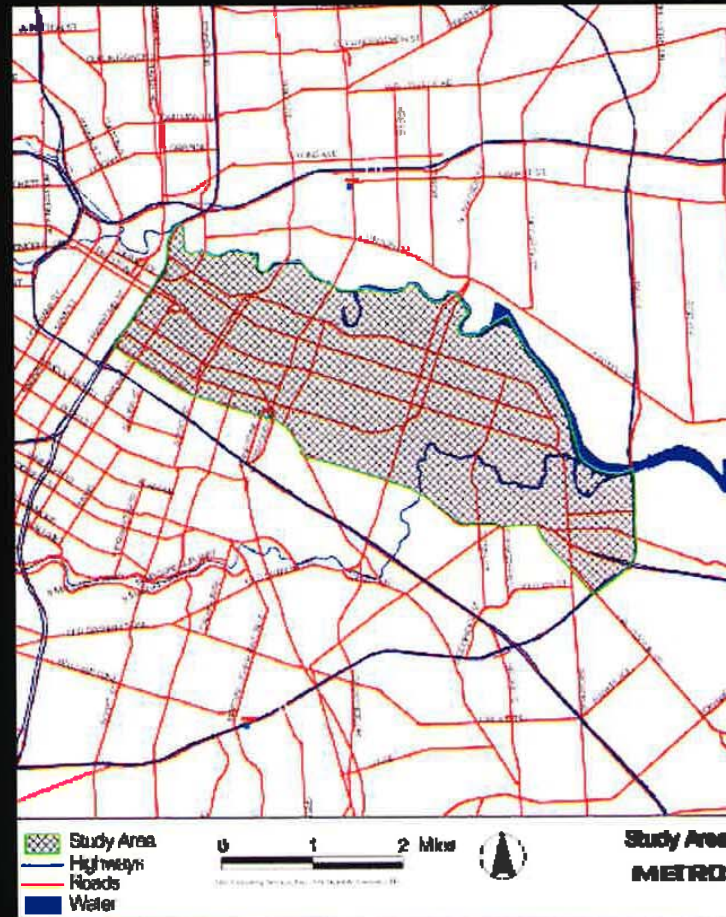
Bounded by Katy Freeway (IH 10) on the north, Westpark Drive on the south, just east of the West Loop (IH 610) and Chimney Rock Drive on the west





# Harrisburg

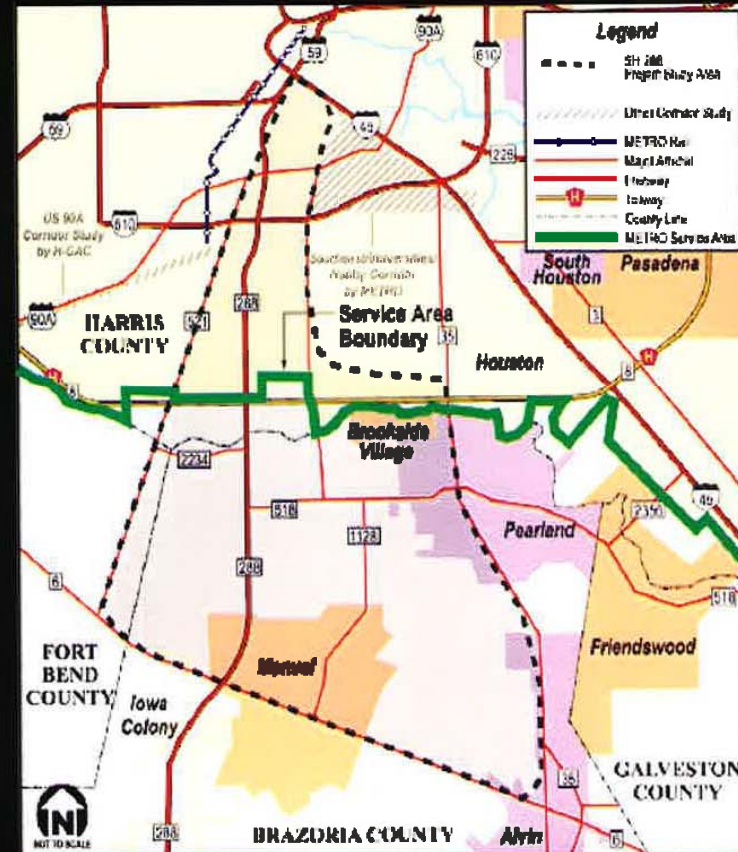
East of Downtown,  
between Gulf  
Freeway (IH 45S)  
and Buffalo Bayou  
out to the boundary  
of the METRO  
service area





# SH 288

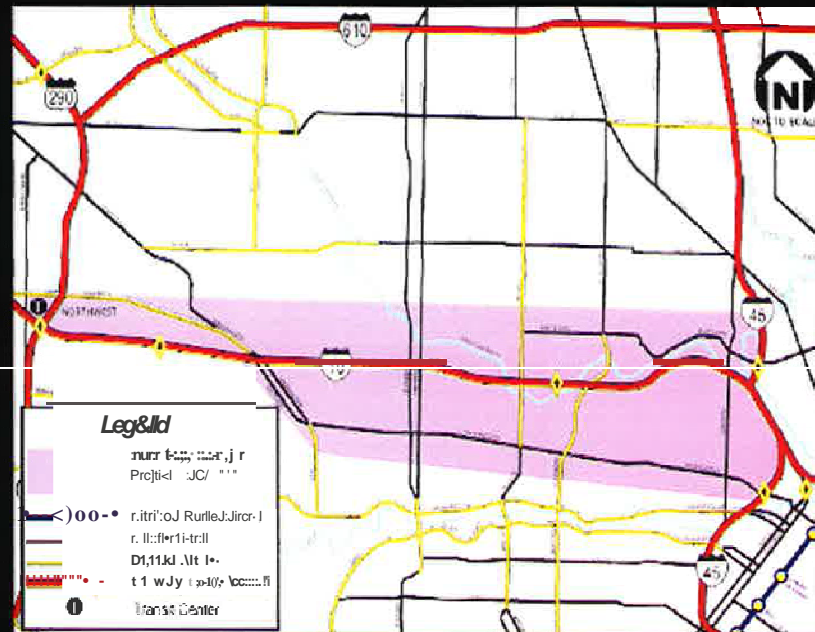
**Bounded by Hwy 6 to the south, FM 521 to the west and Mykawa Road to the east, including a portion of Brazoria County**





## Inner Katy

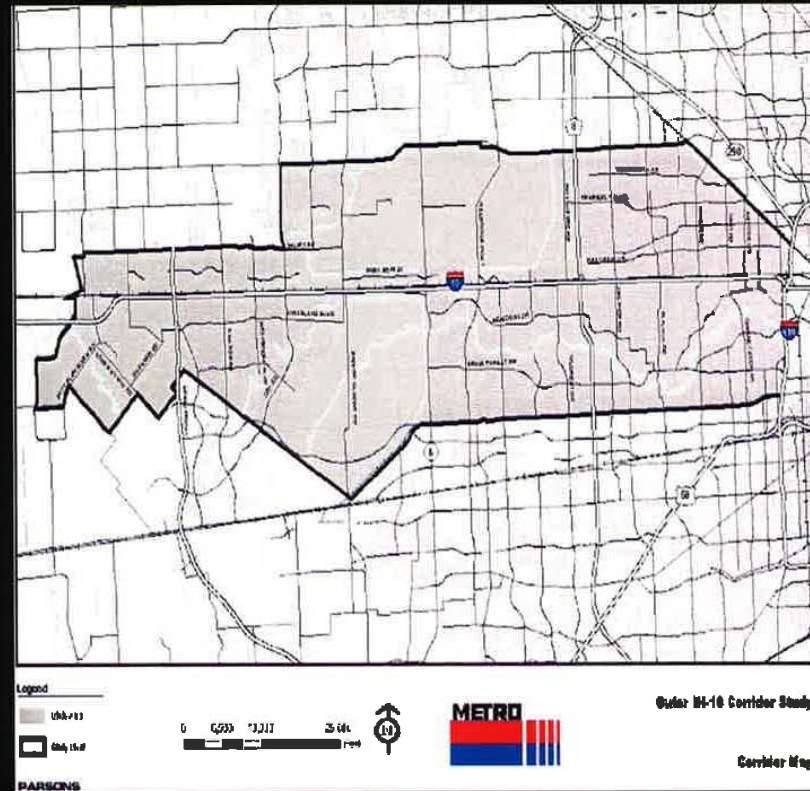
Bordered by IH 45S to the east, Buffalo Bayou to the south, IH 610/Silber to the west, and 11th Street to the north





# Outer Katy

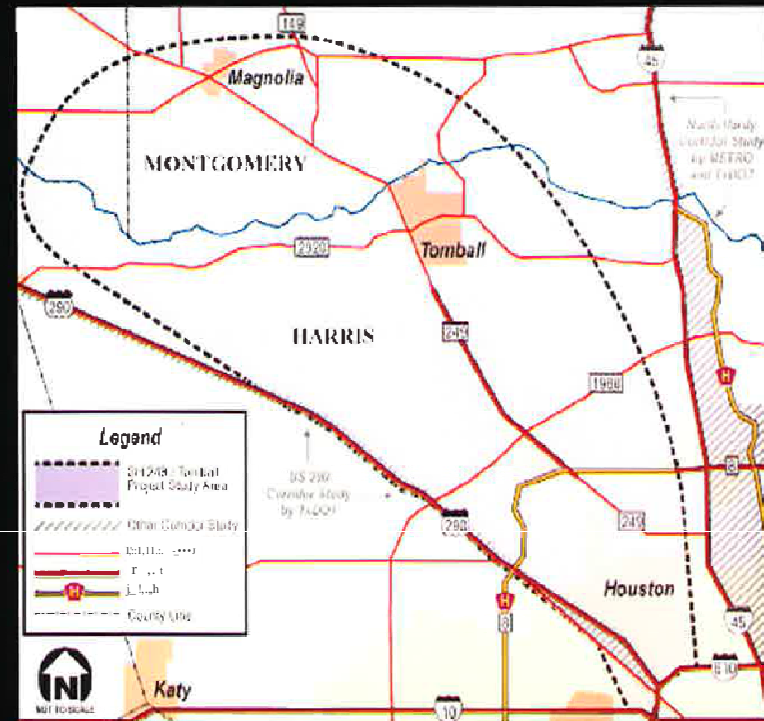
West of  
Downtown,  
extends west  
from the Inner  
Katy Corridor at  
the West Loop to  
Grand Parkway  
(SH 99)





## SH 249/Tomball

Extends from IH 610/Northwest Transit Center to Tomball, including areas between US 290/ Hempstead & Stuebner-Airline/ Veterans Memorial







## Westpark

**Extends west from  
Main Street at  
Wheeler/Blodgett to  
the Grand Parkway  
(SH 99) and runs  
parallel to Westpark  
Drive**

